

# Title Page

**Title:** Conduction system pacing is superior to reduce the new-onset atrial fibrillation risk compared with right ventricular pacing: insights from pooled clinical evidence

**Running title:** The new-onset AF on CSP

**Authors:** Feng Li, MD<sup>1#</sup>, You Zhang, MD<sup>1#</sup>, Si-Liang Peng, MD<sup>1#</sup>, Meng-Chao Jin, MD<sup>1</sup>, Chi Geng, MD<sup>1</sup>, Venkatesh Ravi, MD<sup>2</sup>, Parikshit S. Sharma, MD, MPH<sup>2\*</sup>, Pugazhendhi Vijayaraman, MD<sup>3\*</sup>, Hui Li, MD<sup>1\*</sup>

## Author Affiliations:

1. Department of Cardiology, The Second Affiliated Hospital of Soochow University, Suzhou, Jiangsu, 215004, China.

2. Dept of Internal medicine, Division of Cardiology, Rush University Medical Center Chicago, IL

3. Geisinger Heart Institute, Geisinger Wyoming Valley Medical Center, MC 36-10, 1000 E Mountain Blvd, WilkesBarre, PA 18711;

#The first three authors contributed equally to this work.

## \*Correspondence author:

Dr. Hui Li, Department of Cardiology, The Second Affiliated Hospital of Soochow University, Suzhou, Jiangsu, 215004, China. Tel: 051267784077; Email: 9911263@163.com.

NOTE: This preprint reports new research that has not been certified by peer review and should not be used to guide clinical practice.

1 Dr. Pugazhendhi Vijayaraman, Geisinger Heart Institute, Geisinger Wyoming Valley  
2 Medical Center, MC 36-10, 1000 E Mountain Blvd, WilkesBarre, PA 18711. Email:  
3 [pvijayaraman1@geisinger.edu](mailto:pvijayaraman1@geisinger.edu).

4 Dr. Parikshit S. Sharma, Dept of Internal medicine, Division of Cardiology, Rush  
5 University Medical Center, Chicago, IL. Tel: 201-931-6499. Email:  
6 Parikshit\_S\_Sharma@rush.edu.

7

## 8 **Conflict of interests**

9 The authors declare that there is no conflict of interests regarding the publication of  
10 this paper.

11

## 12 **Acknowledgments**

13 We sincerely appreciated the supporting by the Suzhou Science and Technology Plan  
14 Project (SKY2022151). We would also show sincere appreciation to the reviewers for  
15 critical comments on this article.

16

## 17 **Ethics approval**

18 Not applicable.

19

## 20 **Data Availability Statement**

21 The data that support the findings of this study are available from the corresponding  
22 author upon reasonable request.

1  
2  
3  
4  
5  
6  
7  
8  
9  
10  
11  
12  
13  
14  
15  
16  
17  
18  
19  
20  
21  
22

## **Funding**

This work was supported by the Suzhou Science and Technology Plan Project (SKY2022151).

**Authors' contribution:** Hui Li and Feng Li developed the concept of the study; Feng Li, You Zhang, Si-Liang Peng designed this study and carried out the data analysis; Feng Li wrote the manuscript with help from You Zhang, Si-Liang Peng, Meng-Chao Jin, Chi Geng, Venkatesh Ravi, Parikshit S. Sharma, and Pugazhendhi Vijayaraman; Hui Li, Venkatesh Ravi, Parikshit S. Sharma, and Pugazhendhi Vijayaraman provided critical reviews of the paper. All authors have read and approved the final manuscript.

## **Clinical trial registration:**

[https://www.crd.york.ac.uk/prospero/display\\_record.php?ID=CRD42023492551](https://www.crd.york.ac.uk/prospero/display_record.php?ID=CRD42023492551), identifier (CRD42023492551)

1

## 2 **Abstract**

3 **Background:** Conduction system pacing (CSP) has been reported to improve clinical  
4 outcomes in comparison of right ventricular pacing (RVP). However, the performance  
5 between CSP and RVP on the risk of new-onset atrial fibrillation (AF) remains  
6 elusive.

7 **Methods:** Four online databases were systematically searched up to December 1<sup>st</sup>  
8 2023. Studies comprising the rate/risk of new-onset AF between CSP and RVP group  
9 were included. Subgroup analysis was performed to screen the potential determinants  
10 for the new-onset AF risk for CSP therapy. Moreover, the pooled risk of new-onset AF  
11 based on ventricular pacing burden (Vp) between CSP and RVP group were  
12 evaluated.

13 **Results:** A total of five studies including 1,491 patients requiring pacing therapy were  
14 eligible. The pooled new-onset AF rates for CSP and RVP group were 0.09 and 0.26,  
15 respectively. Compared with RVP group, CSP group showed a lower pooled risk (risk  
16 ratio [RR] 0.38,  $P=0.000$ ) and adjusted risk (hazard ratio [HR] 0.33,  $P=0.000$ ) of  
17 new-onset AF. Meanwhile, a significant intervention-covariate interaction for the  
18 adjusted risk of new-onset AF between CSP and RVP group was identified with  $Vp <$   
19  $20\%$  and  $Vp \geq 20\%$ .

20 **Conclusions:** Our study suggests that CSP is superior to reduce the new-onset atrial  
21 fibrillation risk compared with RVP. The  $Vp \geq 20\%$  may be the key determinant on  
22 the lower risk of new-onset AF with CSP therapy.

1

2 **Key words:** Conduction system pacing; His bundle pacing; Left bundle branch area  
3 pacing; Right ventricular pacing; New-onset atrial fibrillation

4

5

6

7

8

9

10

11

12

13

14

15

16

17

18

19

20

21

22

1

## 2 **1. Introduction**

3 Right ventricular pacing (RVP), including right ventricular apex pacing and right  
4 ventricular septal pacing, has been widely utilized for patients with symptomatic  
5 bradycardia owing to multiple advantages, including relatively easy implantation,  
6 satisfying efficacy, and operation safety<sup>[1, 2]</sup>. Whereas, concerns have arisen with the  
7 increasing evidence on RVP. Accumulated studies suggest that RVP is significantly  
8 associated with the ventricular electromechanical dyssynchrony, ultimately causing to  
9 increased atrial arrhythmias, heart failure, and mortality<sup>[3, 4]</sup>. Therefore, establishment  
10 of an alternative pacing strategy for decreasing the risk of new-onset AF after pacing  
11 therapy is necessary.

12 Conduction system pacing (CSP), including His bundle pacing and left bundle  
13 branch pacing (LBBP), or left bundle branch area pacing (LBBaP), is a promising  
14 physiological pacing strategy with the intriguing clinical outcomes, including reduction,  
15 even reversal of the adverse clinical outcomes related to RVP<sup>[5, 6]</sup>. Our recent  
16 published meta-analysis on the effects of CSP in patients of heart failure indicated that  
17 CSP showed a more effective performance on the heart failure patients than  
18 conventional pacing therapy, which further indicated that CSP is a superior pacing  
19 strategy to achieve a better clinical prognosis<sup>[7]</sup>.

20 New-onset atrial fibrillation (AF) is a concern with pacing therapy due to its risk  
21 of progressing into persistent AF, increasing stroke/systolic embolism, left ventricular  
22 dysfunction, as well as impaired quality of life. Accumulated evidence demonstrated

1 that RVP was significantly with the occurrence of new-onset AF. Whereas, evidence  
2 on the advantage of CSP versus RVP on the risk of new-onset AF remains elusive on  
3 account of limitation of small cohort of patients, lack of long-term follow-up, and a  
4 relatively high technical threshold with CSP. Therefore, we performed this registered  
5 study to explore if CSP is superior to reduce the new-onset atrial fibrillation risk  
6 compared with RVP.

7

8

9

10

11

12

13

14

15

16

17

18

19

20

21

22

1

## 2 **2. Methods**

### 3 **2.1 Study design**

4 This study was performed following the preferred reporting items for reviews and the  
5 PRISMA guidelines (**Supplementary PRISMA Checklist**). The official protocol was  
6 registered on the PROSPERO database (CRD42023492551).

7

### 8 **2.2 Search strategy**

9 Two reviewers (Feng Li and You Zhang) independently searched for four databases,  
10 including PubMed, Cochrane Library, Web of Science and Embase from the  
11 establishment of the online databases up to 1 December 2023. The searching  
12 keywords mainly included “conduction system pacing”, “CSP”, “His pacing”, “Hisian  
13 area pacing”, “His bundle pacing”, “left bundle branch pacing”, “LBBP”, “left bundle  
14 branch area pacing”, “LBBaP”, “right ventricular pacing”, “RVP”, “right ventricular  
15 apex pacing”, “right ventricular septal pacing”, “atrial fibrillation”, “new-onset atrial  
16 fibrillation”, “new-onset AF” and “new-onset atrial high-rate episodes”. The search  
17 strategy was presented in the **Supplementary Text 1**. Trials comprising the rate or  
18 risk of new-onset AF between CSP and RVP group were included. A manual search  
19 was also conducted to identify the potential publications. Moreover, the relevant  
20 corresponding authors were contacted to acquire the missing data related outcomes in  
21 their publications.

22



## 2.3 Study selection

Two reviewers (Feng Li and Si-Liang Peng) independently reviewed full texts for screening the eligible studies, respectively. The eligible study would be determined if inclusion criteria were met: (1) RCT and observational studies. (2) studies reporting the incidence rate of new-onset AF or (adjusted) risk ratio/hazard ratio of new-onset AF between CSP and RVP were included. (3) studies with the most data of multiple publications for the same study. Review articles, editorials, case reports, animal studies, and studies without original data were excluded. A third reviewer (Hui Li) discussed and resolved the potential disagreements on the eligibility.

## 2.4 Data extraction and quality assessment

Two researchers (You Zhang and Meng-Chao Jin), respectively, acquired the data from all eligible studies. Any controversies were consulted and resolved by a third one (Hui Li). First, we documented the eligible study characteristics, including publication year, the first author, study design, subjects type, pacing type of CSP, the sample size in the CSP and RVP group, and follow-up. Then, the study demographic and clinical characteristics, as well as adjusted confounders were also recorded.

A appraisal tool for observational studies was applied by two independent researchers (Si-Liang Peng and Meng-Chao Jin) to evaluate the quality of the eligible studies. In this study, the Newcastle-Ottawa Quality Assessment Scale (NOS), including three domains with nine points, was used. The study quality was divided into low quality (the total score < 6) and moderate-to-high quality (the total score ≥ 6).

1 Any potential controversies were resolved by a third one (Hui Li).

2

### 3 **2.5 Statistical analysis**

4 In this study, the pooled rates of the events (ratio of the number of events to patient  
5 number) and 95% confidence interval (CI) were calculated for the new-onset AF with  
6 CSP and RVP, respectively. The pooled risk ratio (RR) and corresponding 95%CI  
7 were calculated for the risk of new-onset AF between CSP and RVP. The pooled  
8 hazard risk (HR) and corresponding 95%CI were calculated for the adjusted risk of  
9 new-onset AF between CSP and RVP, as well as the adjusted risk of new-onset AF  
10 based on the Vp. The Stata 16.0 was used for analyses. Statistically significant was  
11 defined as  $P < 0.05$ .

12 We utilized the I-squared ( $I^2$ ) and chi-squared test to quantify and evaluate the  
13 statistical heterogeneity of studies. If the  $I^2$  value was  $< 50\%$  and/or  $P \geq 0.05$  for the  
14 chi-squared test, we defined that the between-study heterogeneity was substantial, and  
15 a fixed-effect model would be performed. Otherwise, a random-effect model was  
16 performed. Sensitivity analysis was conducted by sequentially omitting one study at a  
17 time to to evaluate the effect of a single study on the overall risk. Potential publication  
18 bias was also assessed using Egger's test.

19 Additionally, subgroup analysis was conducted to screen the sources of  
20 heterogeneity, as well as the potential determinants for the new-onset AF between  
21 CSP and RVP group. Based on the study characteristics, previously reported factors  
22 and other potential factors, a total of five subgroup factors were screened, including

1 indication of implant (SND and AVB vs. AVB), pacing type of CSP (LBBaP vs. His  
2 pacing), sample size ( $> 100$  vs.  $\leq 100$ ), follow-up time ( $> 24$ months vs.  $\leq 24$ months),  
3 and new-onset AF type (Clinical AF vs. Subclinical AF). Important, we also evaluated  
4 the adjusted new-onset AF risk between CSP and RVP group according to Vp  
5 (including  $Vp \geq 20\%$  vs.  $Vp < 20\%$ , and  $Vp \geq 40\%$  vs.  $Vp < 40\%$ ).

6

### 7 **3. Results**

#### 8 **3.1 Study selection and quality assessment**

9 A total of five observational studies<sup>[8-12]</sup> with 1,491 patients requiring pacing therapy  
10 (672 and 819 patients in CSP and RVP group, respectively) were eligible. The  
11 selection flowchart according to the PRISMA 2020 flow diagram  
12 (<http://prisma-statement.org/prismastatement/flowdiagram.aspx>) was presented in  
13 **Figure 1**. The study demographic and clinical characteristics, as well as adjusted  
14 condounders of the eligible studies were showed in **Table1**.

15 All five eligible studies<sup>[8-12]</sup> enrolled the patients requiring the pacemaker  
16 implantation (PMI), in which the indication of implant with sinus node dysfunction  
17 (SND) and atrioventricular block (AVB) was emphasized in three eligible studies<sup>[8, 10,</sup>  
18 <sup>11]</sup>, and that with only AVB was highlighted in two eligible studies<sup>[9, 12]</sup>. Two eligible  
19 studies<sup>[8, 10]</sup> reported LBBaP, and three<sup>[9, 11, 12]</sup> reported His pacing. New-onset AF was  
20 reported as clinical AF<sup>[8, 10-12]</sup> and subclinical AF (also named atrial high-rate  
21 episodes)<sup>[9]</sup>. Three studies reported the Vp with the cutoff value of 20% (including Vp  
22  $\geq 20\%$ <sup>[8, 10, 11]</sup> and  $Vp < 20\%$  subgroup<sup>[8, 10, 11]</sup>), and two studies reported with Vp with

the cutoff value of 40% (including  $V_p \geq 40\%$ <sup>[8, 11]</sup> and  $V_p < 40\%$  subgroup<sup>[8]</sup>). Only one study<sup>[12]</sup> compared the effects of three different pacing sites (such as His pacing, right ventricular apex, and right ventricular septal) on the new-onset AF, whereas the risk of new-onset AF between His pacing and right ventricular apex pacing was available for further analysis in this study. The mean follow-up time from the eligible studies ranged from 11.1 months to 58.5 months<sup>[8-12]</sup>. All five observational studies showed a moderate-to-high quality (**Supplementary Table 1**).

8

### 9 **3.2 The pooled new-onset AF rates for CSP and RVP group**

10 All eligible studies<sup>[8-12]</sup> reported the new-onset AF rate for CSP therapy and RVP  
11 therapy, respectively. The pooled rates of new-onset AF with random-effect model  
12 were 0.09 (95% CI, 0.05-0.14;  $P = 0.00$ ;  $I^2 = 68.54\%$ ; **Figure 2A**) and 0.26 (95% CI,  
13 0.18-0.36;  $P = 0.00$ ;  $I^2 = 86.93\%$ ; **Figure 2B**), respectively, for CSP group and RVP  
14 group, with an interaction  $P$  value of 0.001. This result suggested that the rate of  
15 new-onset AF in CSP group was significantly lower compared with the RVP group.

16 Sensitivity analysis showed that no substantial change was identified in the  
17 overall combined proportion, which ranged from 0.07 (95% CI, 0.05-0.09) to 0.10  
18 (95% CI, 0.06-0.19) for CSP group, and 0.23 (95% CI, 0.15-0.34) to 0.29 (95% CI,  
19 0.18-0.45) for RVP group. This result revealed that no single study dominated the  
20 combined proportion and heterogeneity.

21 Subgroup analysis was performed and the results displayed in **Table 2** and **Table**

22 **3.** For the new-onset AF rate for CSP therapy, only one significant

intervention-covariate interaction was identified in sample size subgroup, including > 100 (pooled rate 0.07; 95% CI, 0.05-0.09) and  $\leq$  100 (pooled rate 0.18; 95% CI, 0.10-0.26) with  $P=0.001$  for interaction. Meanwhile, for the new-onset AF rate for RVP therapy, two significant intervention-covariate interactions were identified in sample size subgroup, including > 100 (pooled rate 0.18; 95% CI, 0.15-0.21) and  $\leq$  100 (pooled rate 0.42; 95% CI, 0.32-0.52) with  $P = 0.000$  for interaction, as well as new-onset AF type subgroup, including clinical AF (pooled rate 0.23; 95% CI, 0.15-0.31) and subclinical AF (pooled rate 0.45; 95% CI, 0.31-0.59) with  $P=0.006$  for interaction.

10

### 3.3 The risk of new-onset AF between CSP and RVP group

The risk of new-onset AF was assessed between CSP and RVP group from two aspects, including the pooled risk and adjusted risk. A total of five studies<sup>[8-12]</sup>, including 633 patients with CSP therapy and 787 with RVP therapy in our study, reported the risk of new-onset AF between CSP group and RVP group. Compared with RVP group, CSP group was significantly associated with a lower new-onset AF risk (RR, 0.38; 95% CI, 0.28-0.51;  $P = 0.000$ ;  $I^2 = 0.00\%$ ; **Figure 3**) via a fixed-effect model.

We also performed sensitivity analysis for the pooled risk of new-onset AF and found that no significant change in the overall combined proportion, ranging from 0.35 (95% CI, 0.25-0.49) to 0.41 (95% CI, 0.30-0.57). This analysis revealed that the combined proportion and heterogeneity could not be dominated via a single study

(**Supplementary Figure 1**). Meanwhile, publication bias was not displayed with Egger's test ( $P = 0.079$ ). These results suggested that our result was robust. The subgroup analysis for the pooled risk of new-onset AF was performed and the results were consistent with the pooled risk (**Table 4**).

In addition, the adjusted risk of new-onset AF was reported by five eligible studies<sup>[8-12]</sup>. Similarly, we found that compared with RVP group, CSP group was significantly associated with a lower adjusted risk of new-onset AF (HR, 0.33; 95% CI, 0.24-0.44;  $P = 0.000$ ;  $I^2 = 0.00\%$ ; **Figure 4**) via a fixed-effect model. Sensitivity analysis also indicated that that no significant change, ranging from 0.28 (95% CI, 0.20-0.40) to 0.35 (95% CI, 0.24-0.50), in the overall combined proportion. Publication bias using Egger's test ( $P = 0.768$ ) was not displayed. The subgroup analysis for the adjusted risk of new-onset AF showed the consistent results with the pooled adjusted risk (**Figure 5**).

### 3.4 The adjusted new-onset AF risk between CSP and RVP group based on Vp

Three eligible studies<sup>[8, 10, 11]</sup> reported the adjusted risk of new-onset AF between CSP and RVP group based on  $Vp \geq 20\%$  and  $Vp < 20\%$ . The pooled HRs for the adjusted new-onset AF risk between CSP and RVP group with  $Vp \geq 20\%$  and  $Vp < 20\%$  were 0.24 (95% CI, 0.16–0.37;  $P = 0.000$ ) and 0.65 (95% CI, 0.35–1.21;  $P = 0.000$ ), respectively. Importantly, a statistically significant intervention-covariate interaction was identified in Vp subgroup, including  $Vp \geq 20\%$  and  $Vp < 20\%$  with  $P = 0.010$  for interaction (**Figure 6**).

Also, we evaluated the adjusted risk of new-onset AF between CSP and RVP group based on  $Vp \geq 40\%$  and  $Vp < 40\%$  with two eligible studies<sup>[8, 11]</sup>. We found that compared with RVP group, the adjusted new-onset AF risk of CSP group was significantly decreased in  $Vp \geq 40\%$  subgroup (HR = 0.25; 95% CI, 0.14–0.42;  $P = 0.000$ ) and it was not in  $Vp < 40\%$  subgroup (HR = 0.57; 95% CI, 0.26–1.27;  $P = 0.168$ ), respectively. Additionally, no statistically significant intervention-covariate interaction was displayed between Vp subgroups with  $P = 0.088$  for interaction (Figure 7).

#### 4. Discussion

We comprehensively enrolled five observational studies with 1,491 patients requiring pacing therapy, including 672 patients in CSP group and 819 patients in RVP group. To our knowledge, our study may be the first registered meta-analysis to compare the risk of new-onset AF between CSP and RVP group. The main findings included: 1) The rate of new-onset AF in CSP group was significantly lower in comparison with the RVP group; 2) Compared with RVP group, CSP group showed a lower pooled risk, as well as the adjusted risk of new-onset AF; 3) A statistically significant intervention-covariate interaction with  $P = 0.010$  was identified in Vp subgroup, including  $Vp \geq 20\%$  and  $Vp < 20\%$ . The schematic representation for this study is displayed in Figure 8.

RVP, a well-established pacing strategy, has been widely utilized for patients requiring pacing therapy due to relatively easy implantation, satisfying efficacy, and

1 peocedural safety. Whereas, available evidence suggests that RVP is significantly  
2 related to the ventricular electricity and contraction dyssynchrony, promoting to the  
3 occurrence of pacing induced cardiomyopathy, ultimately leading to increased risk for  
4 atrial arrhythmias, heart failure, and mortality<sup>[13]</sup>. New-onset AF, including clinical  
5 and subclinical AF, is of concern during pacing therapy, considering the risks of  
6 progressing into persistent atrial fibrillation, increasing rate of stroke/systolic  
7 embolism, left ventricular dysfunction, and impaired quality of life<sup>[14]</sup>. Numerous  
8 studies had demonstrated that RVP was significantly associated with an increasing  
9 risk of new-onset AF, especially with the patients requiring the high proportion of  
10 ventricular pacing<sup>[15-18]</sup>. Therefore, an alternative pacing strategy is needed to  
11 decrease the risk of new-onset AF after pacing therapy.

12 CSP is an emerging and intriguing physiological pacing modality, facilitating  
13 decrease, or even reverse the adverse clinical outcomes associated with RVP. Our  
14 previuos study also revealed that CSP was more effective performance than  
15 conventional pacing therapy in heart failure patients, including shortened QRS  
16 duration, improved ventricular ejection fraction, improved NYHA class, higher  
17 response rate, as well as lower heart failure rehospitalization<sup>[7]</sup>. Meanwhile, an  
18 increasing evidence indicated that CSP was statistically associated with a reduced risk  
19 of new-onset AF in comparison of RVP<sup>[8, 10, 11]</sup>. In this study, our results also  
20 suggested that compared with RVP therapy, CSP therapy could significantly decrease  
21 the new-onset AF rate for patients requiring the pacing therapy, which might further  
22 increase evidence to highlight the superior perfomance on CSP.



Several risk factors have been reported to be involved in pacing induced pacing induced cardiomyopathy. Lee *et al.*<sup>[19]</sup> performed a retrospective study of 234 patients underwent a permanent pacemaker implantation with RVAP from 1982 to 2004, and found that older age at implantation was an independent predictor for pacing induced heart failure (HR = 1.62; 95% CI, 1.22–2.16;  $P = 0.001$ ). The latest meta-analysis performed by Somma *et al.*<sup>[20]</sup> with twenty-six studies including a total of 57,993 patients suggested that male gender, chronic kidney disease, previous myocardial infarction, native QRS duration, and paced QRS duration were identified to be the most important risk factors for pacing induced cardiomyopathy. Moreover, our previous studies also revealed that high-volume center (also meant a high sample size for a key technique) representing a relatively advanced operational team, was significantly associated with a better efficacy and comparable safety<sup>[7, 21]</sup>. Whereas, very few studies have reported the potential risk factors for the potential pacing induced new-onset AF. In this report, consistent with the previous studies<sup>[7, 21]</sup>, we found that the sample size > 100 was considered as a key factor for reduction of the new-onset AF rate for CSP and RVP, respectively, in comparison of that less than 100. This results also provided an inspiration to our future research that the sample size with cutoff 100 might be appropriate and necessary to acquire the relatively stable and real-world rate, instead of the pseudo-high rate, of new-onset AF post pacing. Subclinical AF has been demonstrated to be associated with the risk of clinical AF<sup>[22]</sup>. A recent meta-analysis with eleven studies conducted by Mahajan R *et al.*<sup>[23]</sup> showed that the risk of clinical AF was as high as 5.7 (95% CI, 4.00–8.00;  $P < 0.001$ ) in

1 patients with subclinical AF. Our subgroup analysis for the subclinical AF rate with  
2 RVP therapy was significantly higher than clinical AF rate, whereas both rates were  
3 similar with CSP therapy. This result might partly explain the high new-onset AF rate  
4 in RVP therapy owing to the high incidence of subclinical AF.

5 Our study also indicated that CSP group could significantly reduce the pooled  
6 risk, as well as adjusted risk of new-onset AF risk compared with RVP group.  
7 Additionally, subgroup analysis showed similar results. While His pacing has been  
8 demonstrated to be the feasibility and safety of intrinsic conduction system pacing,  
9 whereas it failed to widespread performed due to multiple concerns, such as unstable  
10 and elevated thresholds and relatively with follow-up. Excitingly, LBBaP or LBBP  
11 has been more widely adopted relatively low and stable pacing thresholds<sup>[24, 25]</sup>.  
12 Interestingly, our study showed that the rate and risk of new-onset AF between  
13 LBBaP subgroup and His pacing subgroup were similar, which indicated a consistent  
14 effect between both types of CSP. However, concerns must be paid for the higher  
15 pacing threshold with His pacing during long-term follow-up, potentially leading to  
16 excessive battery consumption and premature pacing lead revision. In addition, our  
17 study also suggested that follow-up did not affect the role of CSP in reducing the  
18 new-onset AF.

19 Previous studies had demonstrated that individual with SND showed a high risk  
20 of new-onset AF on account of abnormal sinoatrial node function and increased  
21 automaticity of atrium<sup>[26]</sup>. A two-community based cohort study including a total of  
22 19,893 individuals with a follow-up of seventeen years revealed that SND could

1 significantly increase the risk of AF as high as 5.75 after adjustment of multiple  
2 cardiovascular diseases<sup>[27]</sup>. A latest meta-analysis with thirty-five studies performed  
3 by Liu *et al.*<sup>[28]</sup> demonstrated that patients with SND showed a higher new-onset AF  
4 risk in comparison of those with AVB (RR, 3.45; 95% CI, 1.54-7.69;  $P = 0.003$ ).  
5 Therefore, we made a reasonable speculation that the new-onset AF rate, theoretically,  
6 should be higher in eligible studies with the indication of SND and AVB, while that be  
7 lower in these with indication of AVB. Whereas, in our study the similar results  
8 between SND and AVB subgroup and AVB subgroup were shown in the analysis of  
9 new-onset AF rates of CSP therapy and RVP therapy, as well as the risk of new-onset  
10 AF between CSP and RVP group. This result seemed contradictory to previous studies  
11 and our speculations. The potential explanations for our result are as follow: The  
12 pacing therapy with timely restoration of heart rates with normal atrioventricular  
13 conduction might significantly interrupt the natural progression of the SND and AVB,  
14 ultimately leading to the occurrence of new-onset AF that mainly depended on pacing  
15 percentage or pacing modality.

16 Vp was a key determinant in the new-onset AF risk between CSP and RVP  
17 group, with a positive linear relationship between the risk of AF and Vp<sup>[15]</sup>.  
18 Importantly, screening an optimal Vp cutoff value for recommendation of CSP  
19 therapy to prevent new-onset AF or even pacing induced cardiomyopathy is of great  
20 interes to the pacing community. The 2018 ACC/AHA/HRS guideline on the  
21 evaluation and management of patients with bradycardia and cardiac conduction delay  
22 suggested that more physiologic ventricular activation (such as His pacing) should be

1 preferentially provided with the patients requiring  $V_p > 40\%$ <sup>[29]</sup>. The latest  
2 HRS/APHRS/LAHS guideline defined the substantial  $V_p$  of  $\geq 20\%$ -40% and  
3 highlighted that patients who underwent pacemaker implantation and were expected  
4 to require substantial  $V_p$  may be considered for CSP to reduce pacing-induced  
5 cardiomyopathy risk<sup>[30]</sup>. Our study showed that CSP could significantly reduce the  
6 new-onset AF risk in  $V_p \geq 20\%$  subgroup, as well as  $V_p \geq 40\%$  subgroup, compared  
7 with RVP. Whereas, only one significant intervention-covariate interaction was  
8 identified between  $V_p \geq 20\%$  and  $V_p < 20\%$  subgroup, rather than  $V_p \geq 40\%$  and  $V_p$   
9  $< 40\%$  subgroup. The potential explanation might be that some patients (e.g.,  $V_p$   
10 20%-40%) could benefit from CSP compared with RVP in  $V_p < 40\%$  subgroup, which  
11 leading to a more overlap in 95%CI and no significant interaction between  $V_p \geq 40\%$   
12 subgroup and  $V_p < 40\%$  subgroup. More studies should be designed and performed to  
13 identify the minimal  $V_p$  cutoff value during 20%-40%, with that a significant  
14 interaction could be achieved, thus providing strong evidence for the guideline with  
15 optimal  $V_p$  cutoff value.

16

## 17 **5. Limitations**

18 There are several limitations in our study. First, all eligible studies in this analysis  
19 belonged to retrospective or observational studies, which has inherent limitations  
20 (such as inevitable confounding factors), thus leading to possibly unreliable  
21 results<sup>[31]</sup>. Whereas, the adjusted risk of new-onset AF was analyzed to minimize the  
22 effect of confounders as much as possible. Notably, the pooled risk and the adjusted

1 risk of new-onset AF from our eligible studies were similar, suggesting that our  
2 results were reliable. Our findings should be further assessed in further multicenter  
3 randomized trials with longer follow-up and larger sample size. Second, accumulated  
4 studies suggested that LBBP achieved left ventricular synchrony but induced right  
5 ventricular conduction delay<sup>[32]</sup>. Bipolar LBBP was expected to improve the  
6 bi-ventricular electrical synchrony in comparison of unipolar LBBP, further achieving  
7 more physiological conduction system activation<sup>[33]</sup>. However, no data to date was  
8 reported on the risk of new-onset AF between bipolar and unipolar LBBP. Therefore,  
9 this might be a promising and novel perspective to provide related evidence for the  
10 optimal pacing therapy. Third, some potential biases derived from meta-analysis,  
11 might power our results. Considering that, sensitivity analysis and publication bias  
12 test both suggested our results were relatively robust.

13

## 14 **6. Conclusions**

15 Our study suggests that CSP is superior to reduce the new-onset atrial fibrillation risk  
16 compared with RVP. The  $V_p \geq 20\%$  may be the key determinant of the lower risk of  
17 new-onset AF with CSP therapy. More multicenter randomized trials with longer  
18 follow-up and larger sample size should be conducted to further confirm our findings.

19

20

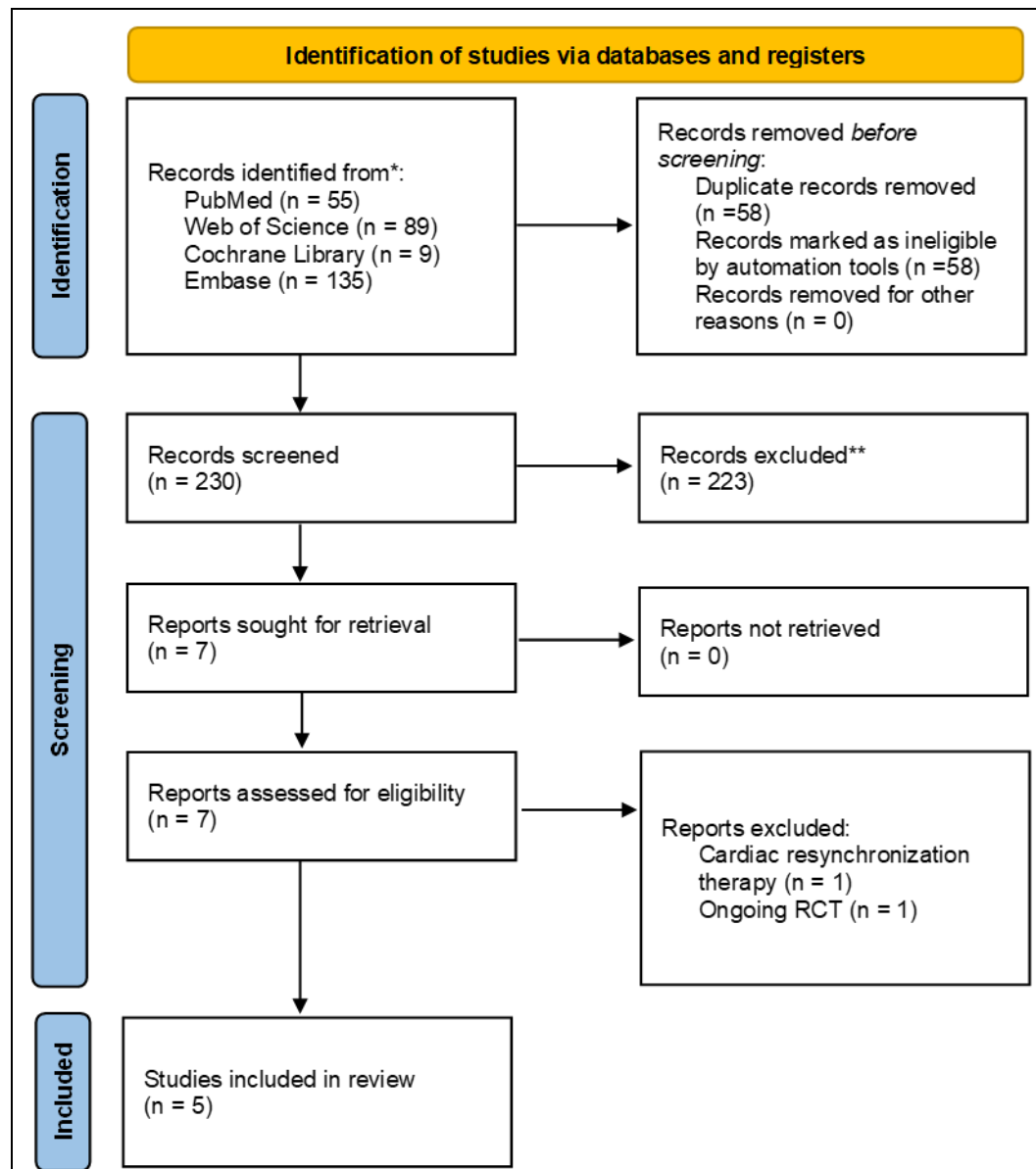
21

22

1

## 2 Figure legends

### 3 Figure 1.



4

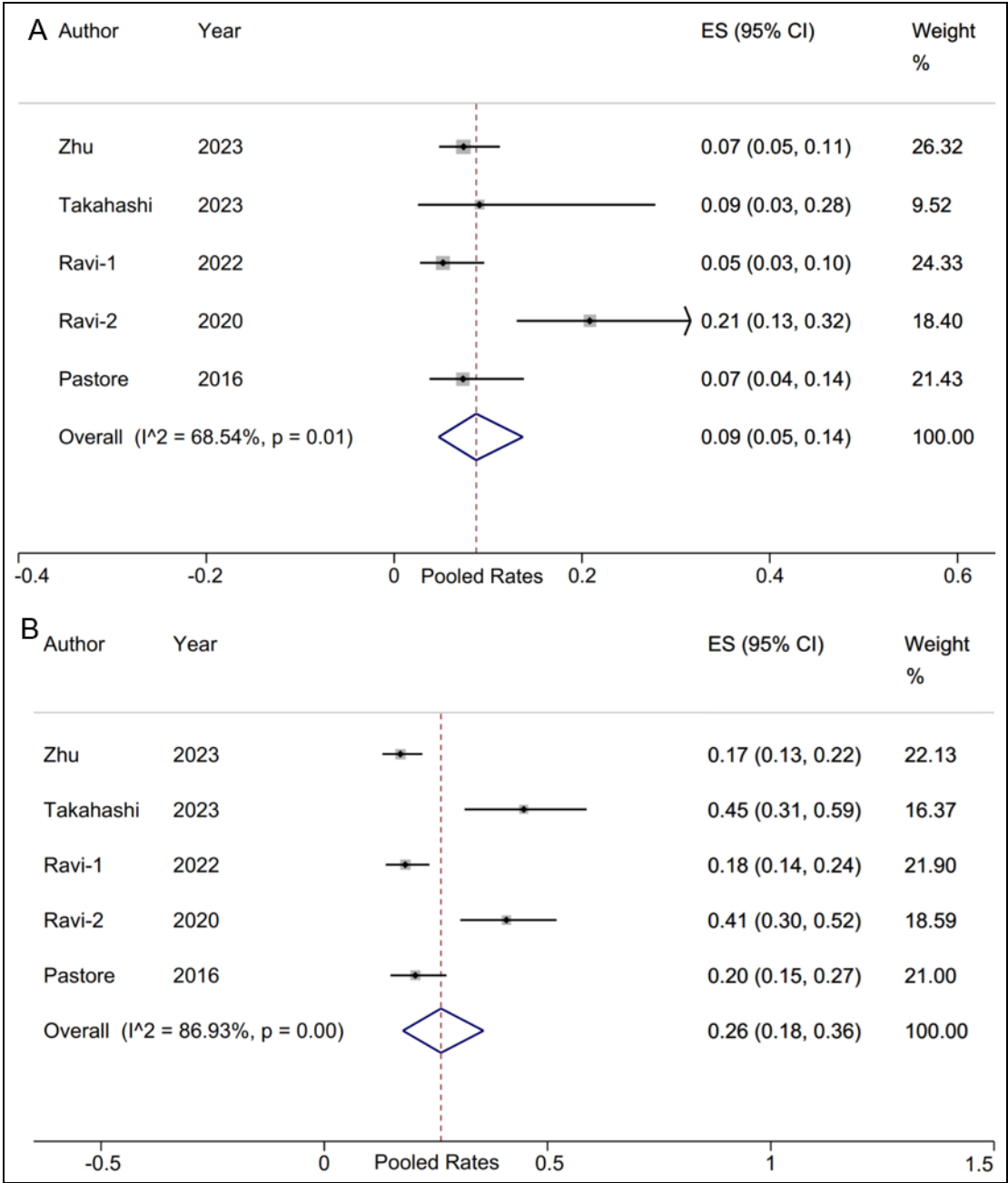
5 **Figure 1.** The flowchart for selecting the eligible studies.

6

7

8

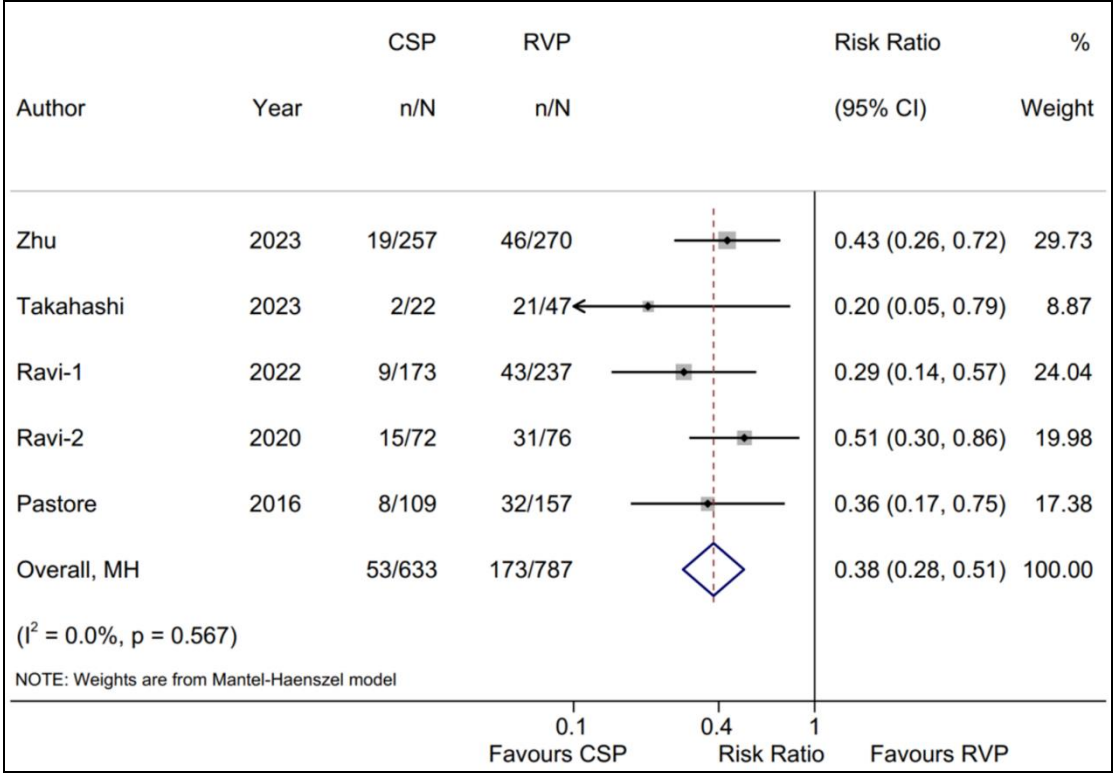
**Figure 2.**



**Figure 2.** Forest plot of the new-onset AF rates for CSP and RVP group. A. The pooled rates of new-onset AF for CSP group; B. The pooled rates of new-onset AF for RVP group. CSP: conduction system pacing; RVP: right ventricular pacing; AF: atrial

fibrillation.

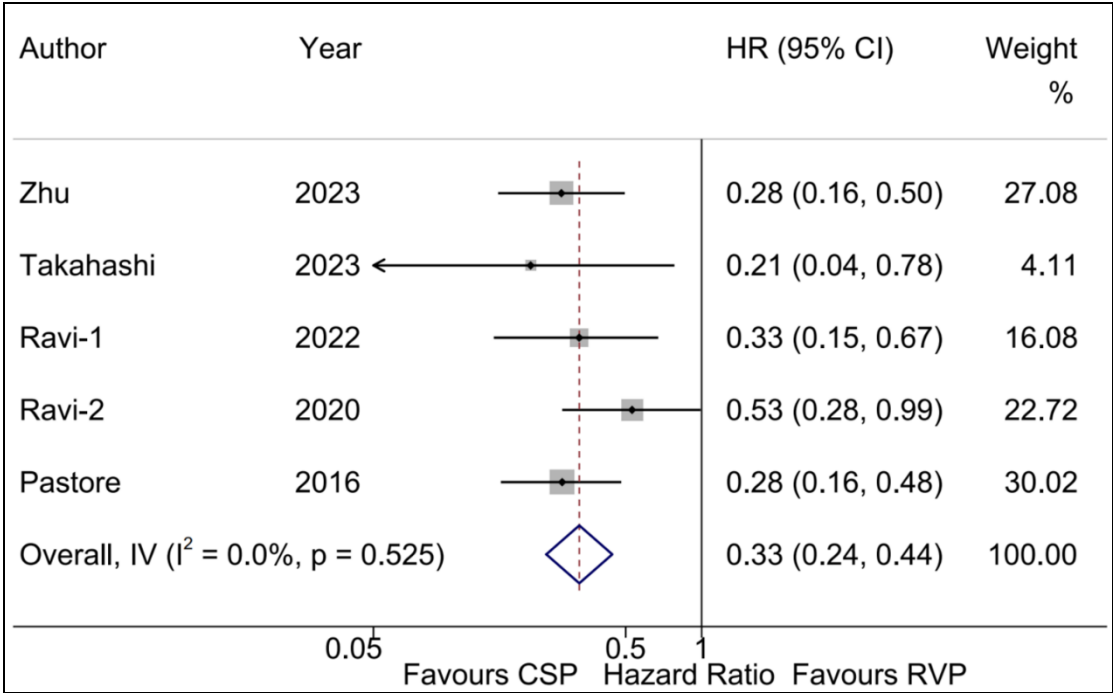
**Figure 3.**



**Figure 3.** Forest plot of the risk of new-onset AF between CSP and RVP group. Comparison of the rate of new-onset AF between CSP and RVP group. CSP: conduction system pacing; RVP: right ventricular pacing; AF: atrial fibrillation.

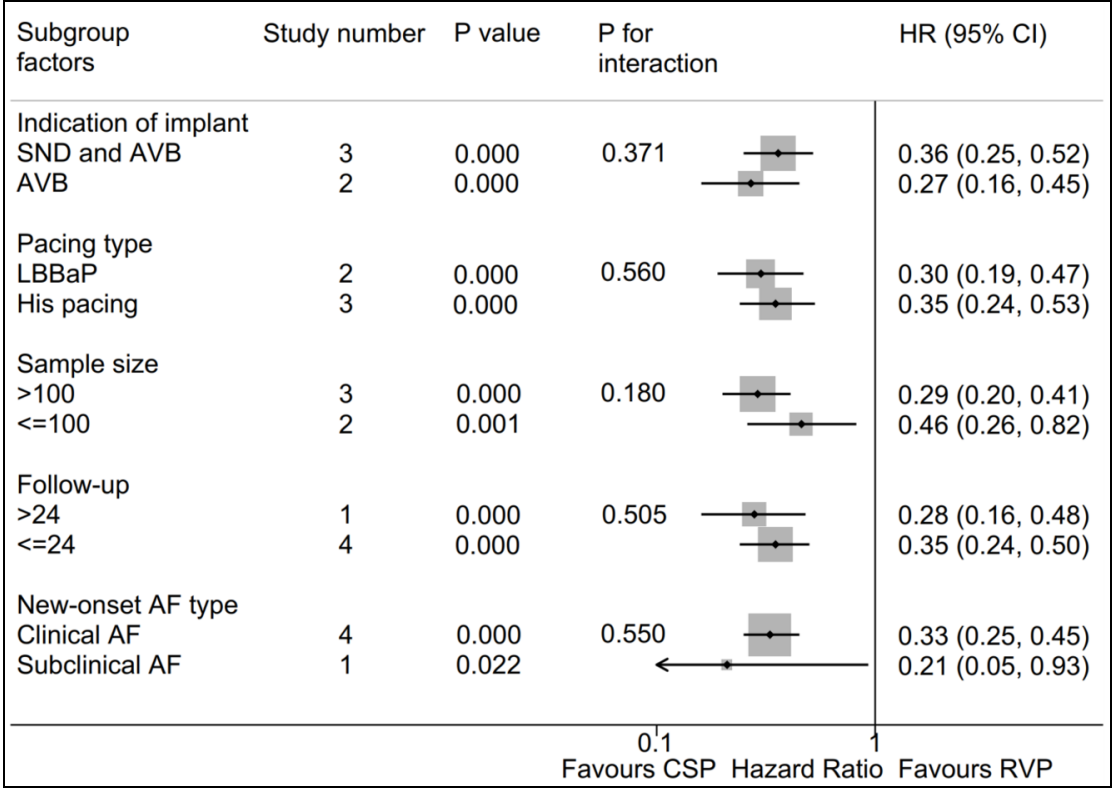


**Figure 4.**



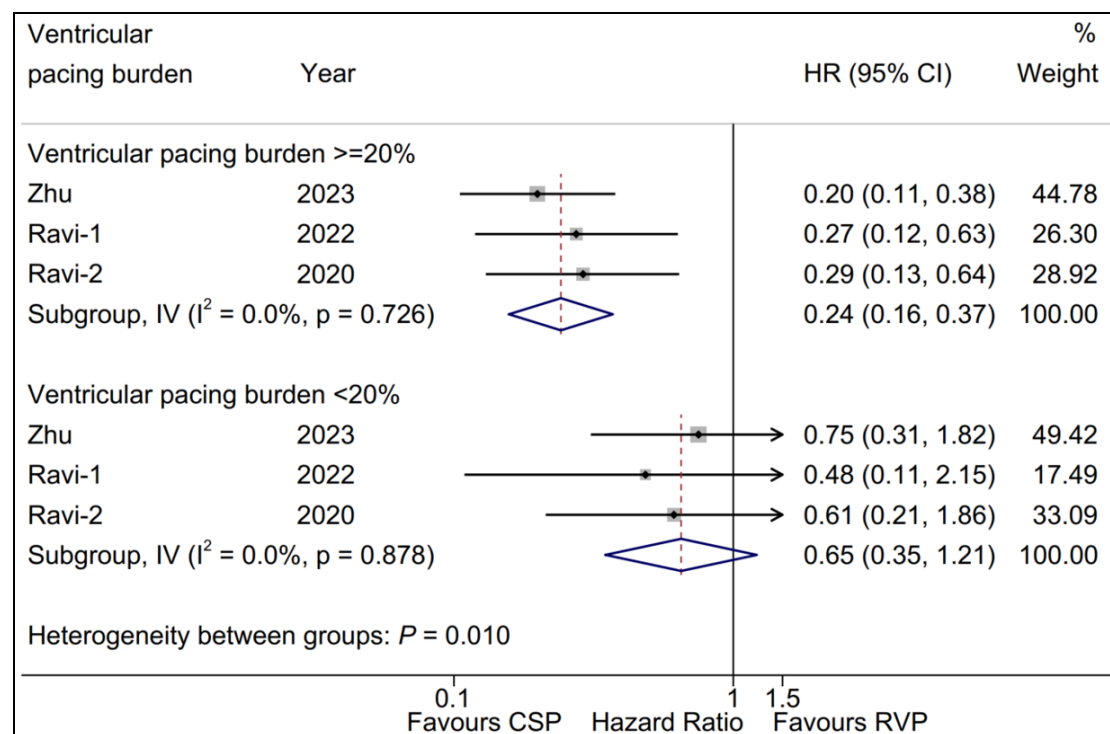
**Figure 4.** Forest plot of the adjusted risk of new-onset AF between CSP and RVP group. Comparison of the adjusted risk of new-onset AF between CSP and RVP group. CSP: conduction system pacing; RVP: right ventricular pacing; AF: atrial fibrillation.

**Figure 5.**



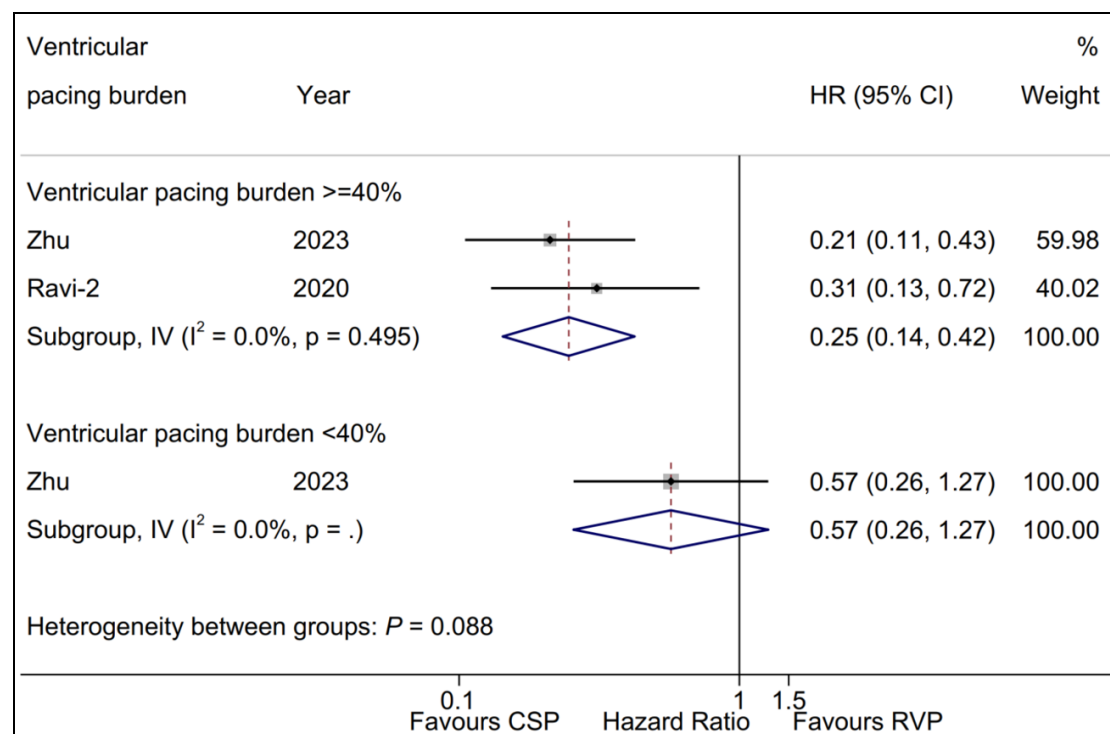
**Figure 5.** Forest plot of the adjusted risk of new-onset AF between CSP and RVP group. Subgroup analysis of the adjusted risk of new-onset AF between CSP and RVP group. CSP: conduction system pacing; RVP: right ventricular pacing; AF: atrial fibrillation.

**Figure 6.**



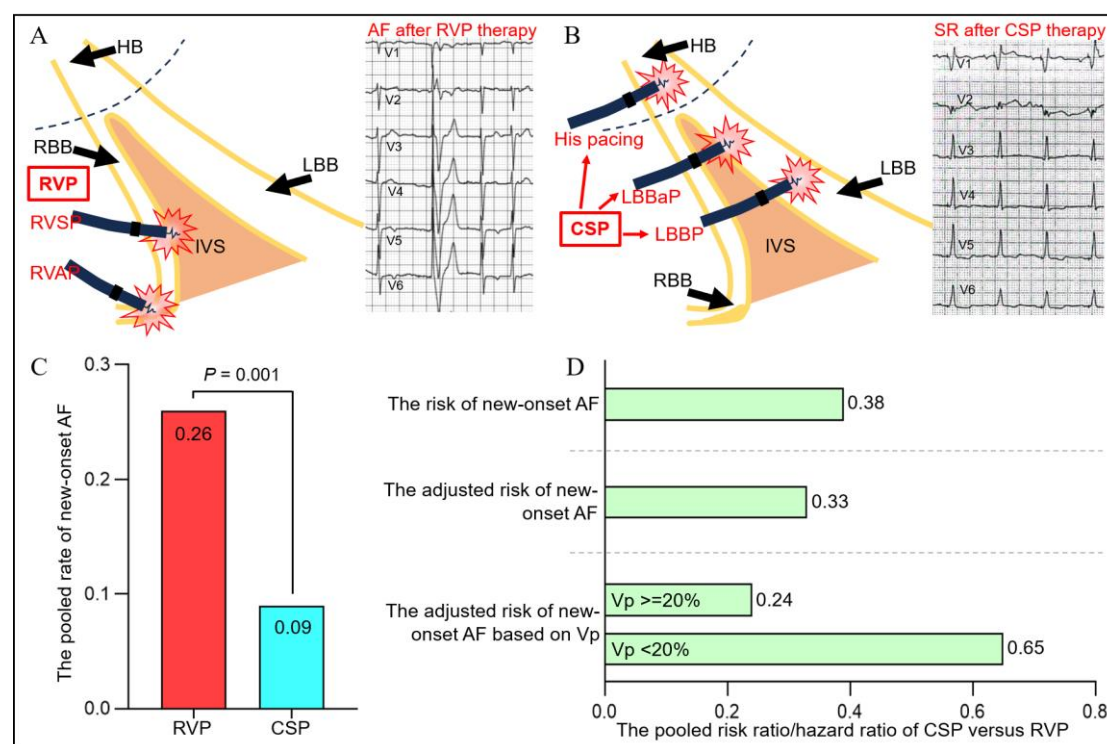
**Figure 6.** Forest plot of the adjusted risk of new-onset AF between CSP and RVP group based on  $V_p \geq 20\%$  subgroup and  $V_p < 20\%$  subgroup. CSP: conduction system pacing; RVP: right ventricular pacing; AF: atrial fibrillation;  $V_p$ : ventricular pacing burden.

**Figure 7.**



**Figure 7.** Forest plot of the adjusted risk of new-onset AF between CSP and RVP group based on  $V_p \geq 40\%$  subgroup and  $V_p < 40\%$  subgroup. CSP: conduction system pacing; RVP: right ventricular pacing; AF: atrial fibrillation;  $V_p$ : ventricular pacing burden.

**Figure 8.**



**Figure 8.** Schematic Representation. A. Pacing pattern diagram and related electrocardiogram for RVP; B. Pacing pattern diagram and related electrocardiogram for CSP; C: The histogram for the new-onset AF rates for CSP and RVP group; D. The new-onset AF risk ratio or hazard ratio between CSP and RVP. CSP: conduction system pacing; RVP: right ventricular pacing; HB: His bundle; RBB: right bundle branch; LBB: left bundle branch; AF: atrial fibrillation; SR: sinus rhythm; IVS: interventricular septum; RVAP: right ventricular apex pacing; RVSP: right ventricular

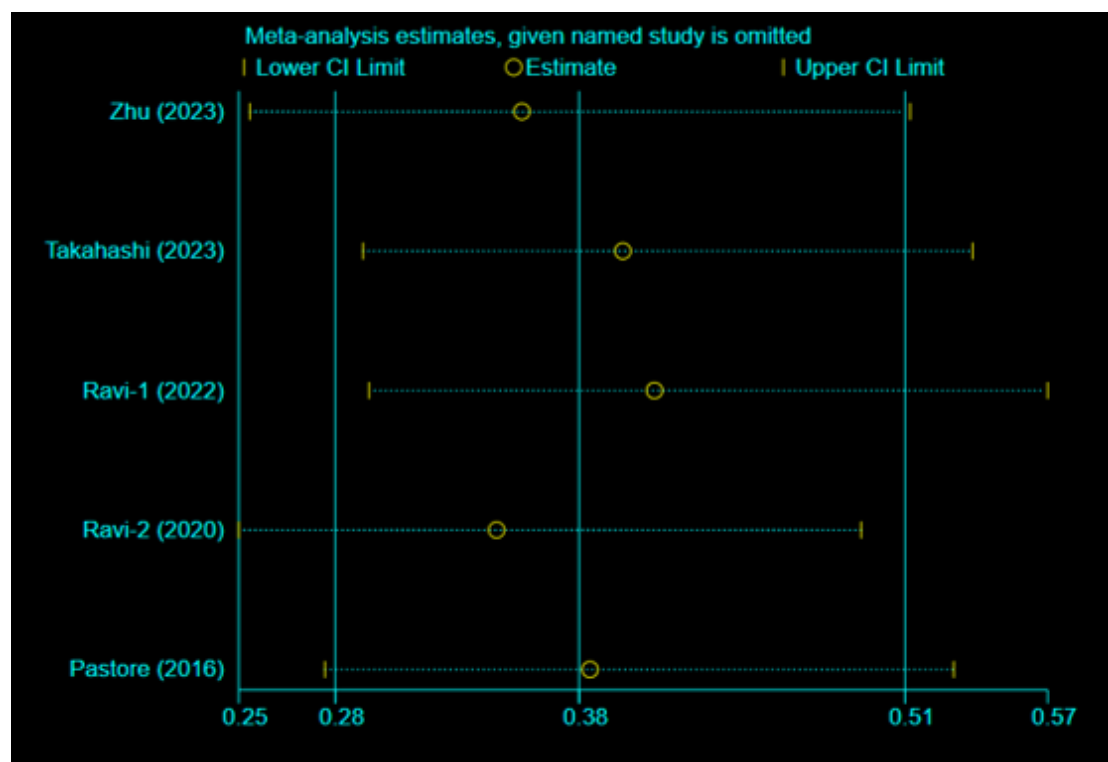
1 septal pacing; LBBP: left bundle branch pacing; LBBaP: left bundle branch area  
2 pacing; Vp: ventricular pacing burden.

3

4

5

## 6 **Supplementary Figure 1**



7

8 **Supplementary Figure 1.** The sensitivity analysis for the pooled risk of new-onset  
9 AF.

10

11

12

13

14

1

2

3

4

5

6

7

## References

- 8 [1] Inoue N, Ogane T, Hiramatsu T, et al. Relationship between left-axis deviation  
9 and onset of cardiac adverse events in right ventricular pacing. J Electrocardiol.  
10 2023. 80: 119-124.
- 11 [2] Healey JS, Yee R, Tang A. Right ventricular apical pacing: a necessary evil.  
12 Curr Opin Cardiol. 2007. 22(1): 33-8.
- 13 [3] Huizar JF, Kaszala K, Tan A, et al. Abnormal cconduction-induced  
14 ccardiomyopathy: JACC review topic of the week. J Am Coll Cardiol. 2023.  
15 81(12): 1192-1200.
- 16 [4] Fletcher-Hall S. Pacemaker-induced cardiomyopathy. JAAPA. 2023. 36(9):  
17 1-4.
- 18 [5] Mao Y, Duchenne J, Yang Y, et al. Left bundle branch pacing better preserves  
19 ventricular mechanical synchrony than right ventricular pacing A two-center  
20 study. Eur Heart J Cardiovasc Imaging. 2023.
- 21 [6] Keene D, Anselme F, Burri H, et al. Conduction system pacing, a European  
22 survey: insights from clinical practice. Europace. 2023. 25(5).

- 1 [7] Zhang J, Li F, Zhang ZY, et al. Conduction system pacing is superior to  
2 biventricular pacing in patients with heart failure: Insights from the pooled  
3 clinical studies. *Front Physiol.* 2023. 14: 1125340.
- 4 [8] Zhu H, Li X, Wang Z, et al. New-onset atrial fibrillation following left bundle  
5 branch area pacing vs. right ventricular pacing: a two-centre prospective  
6 cohort study. *Europace.* 2023. 25(1): 121-129.
- 7 [9] Takahashi M, Kujiraoka H, Arai T, et al. New-onset atrial high-rate episodes  
8 between his bundle pacing and conventional right ventricular septum pacing in  
9 patients with atrioventricular conduction disturbance. *J Interv Card*  
10 *Electrophysiol.* 2023 .
- 11 [10] Ravi V, Sharma PS, Patel NR, et al. New-onset atrial fibrillation in left bundle  
12 branch area pacing compared with right ventricular pacing. *Circ Arrhythm*  
13 *Electrophysiol.* 2022. 15(4): e010710.
- 14 [11] Ravi V, Beer D, Pietrasik GM, et al. Development of new-onset or progressive  
15 atrial fibrillation in patients with permanent HIS bundle pacing versus right  
16 ventricular pacing: results vrom the RUSH HBP registry. *J Am Heart Assoc.*  
17 2020. 9(22): e018478.
- 18 [12] Pastore G, Zanon F, Baracca E, et al. The risk of atrial fibrillation during right  
19 ventricular pacing. *Europace.* 2016. 18(3): 353-8.
- 20 [13] Ponnusamy SS, Syed T, Vijayaraman P. Pacing induced cardiomyopathy:  
21 recognition and management. *Heart.* 2023. 109(18): 1407-1415.
- 22 [14] Joglar JA, Chung MK, Armbruster AL, et al. 2023 ACC/AHA/ACCP/HRS



- 1 guideline for the diagnosis and management of atrial fibrillation: A report of
- 2 the American College of Cardiology/American Heart Association Joint
- 3 Committee on clinical practice guidelines. *Circulation*. 2023.
- 4 [15] Sweeney MO, Hellkamp AS, Ellenbogen KA, et al. Adverse effect of
- 5 ventricular pacing on heart failure and atrial fibrillation among patients with
- 6 normal baseline QRS duration in a clinical trial of pacemaker therapy for sinus
- 7 node dysfunction. *Circulation*. 2003. 107(23): 2932-7.
- 8 [16] Sweeney MO, Bank AJ, Nsah E, et al. Minimizing ventricular pacing to
- 9 reduce atrial fibrillation in sinus-node disease. *N Engl J Med*. 2007. 357(10):
- 10 1000-8.
- 11 [17] Khurshid S, Epstein AE, Verdino RJ, et al. Incidence and predictors of right
- 12 ventricular pacing-induced cardiomyopathy. *Heart Rhythm*. 2014. 11(9):
- 13 1619-25.
- 14 [18] Veasey RA, Arya A, Silberbauer J, et al. The relationship between right
- 15 ventricular pacing and atrial fibrillation burden and disease progression in
- 16 patients with paroxysmal atrial fibrillation: the long-MinVPACE study.
- 17 *Europace*. 2011. 13(6): 815-20.
- 18 [19] Lee SA, Cha MJ, Cho Y, et al. Paced QRS duration and myocardial scar
- 19 amount: predictors of long-term outcome of right ventricular apical pacing.
- 20 *Heart Vessels*. 2016. 31(7): 1131-9.
- 21 [20] Somma V, Ha FJ, Palmer S, et al. Pacing-induced cardiomyopathy: A
- 22 systematic review and meta-analysis of definition, prevalence, risk factors, and

- 1 management. *Heart Rhythm*. 2023. 20(2): 282-290.
- 2 [21] Li F, Sun JY, Wu LD, et al. The long-term outcomes of ablation with vein of  
3 Marshall ethanol infusion vs. ablation alone in patients with atrial fibrillation:  
4 A meta-analysis. *Front Cardiovasc Med*. 2022. 9: 871654.
- 5 [22] Andrade JG, Deyell MW, Bennett R, et al. Assessment and management of  
6 asymptomatic atrial fibrillation. *Heart*. 2023.
- 7 [23] Mahajan R, Perera T, Elliott AD, et al. Subclinical device-detected atrial  
8 fibrillation and stroke risk: a systematic review and meta-analysis. *Eur Heart J*.  
9 2018. 39(16): 1407-1415.
- 10 [24] Raymond-Paquin A, Verma A, Kolominsky J, et al. Left bundle branch area  
11 pacing in patients with atrioventricular conduction disease: A prospective  
12 multicenter study. *Heart Rhythm*. 2022. 19(9): 1484-1490.
- 13 [25] Kron J, Bernabei M, Kaiser D, et al. Real-world performance of conduction  
14 system pacing compared with traditional pacing. *Circ Arrhythm  
15 Electrophysiol*. 2023. 16(7): 411-412.
- 16 [26] Manoj P, Kim JA, Kim S, et al. Sinus node dysfunction: current understanding  
17 and future directions. *Am J Physiol Heart Circ Physiol*. 2023. 324(3):  
18 H259-H278.
- 19 [27] Alonso A, Jensen PN, Lopez FL, et al. Association of sick sinus syndrome  
20 with incident cardiovascular disease and mortality: the atherosclerosis risk in  
21 Communities study and Cardiovascular Health Study. *PLoS One*. 2014. 9(10):  
22 e109662.

- 1 [28] Liu Y, Zheng Y, Tse G, et al. Association between sick sinus syndrome and  
2 atrial fibrillation: A systematic review and meta-analysis. *Int J Cardiol.* 2023.  
3 381: 20-36.
- 4 [29] Kusumoto FM, Schoenfeld MH, Barrett C, et al. 2018 ACC/AHA/HRS  
5 guideline on the evaluation and management of patients with bradycardia and  
6 cardiac conduction delay: executive summary: A report of the American  
7 College of Cardiology/American Heart Association Task Force on clinical  
8 practice guidelines, and the Heart Rhythm Society. *Circulation.* 2019. 140(8):  
9 e333-e381.
- 10 [30] Chung MK, Patton KK, Lau CP, et al. 2023 HRS/APHRS/LAHRS guideline  
11 on cardiac physiologic pacing for the avoidance and mitigation of heart failure.  
12 *Heart Rhythm.* 2023. 20(9): e17-e91.
- 13 [31] Boyko EJ. Observational research--opportunities and limitations. *J Diabetes*  
14 *Complications.* 2013. 27(6): 642-8.
- 15 [32] Lu W, Lin J, Li Y, et al. Quantitative analysis reveals influencing factors to  
16 facilitate successful anodal-ring capture in left bundle branch pacing.  
17 *Europace.* 2023. 25(6).
- 18 [33] Curila K, Jurak P, Prinzen F, et al. Bipolar anodal septal pacing with direct  
19 LBB capture preserves physiological ventricular activation better than  
20 unipolar left bundle branch pacing. *Front Cardiovasc Med.* 2023. 10: 1140988.

**Table 1** The baseline characteristics of eligible studies

First author (year)	Study design	Subject types	Pacing type of CSP	Indication for implant		Follow-up (d, days; m, months; y, years)
				CSP group	RVP group	
Zhu (2023)	Prospective observational cohort	All patients with bradycardia and indicated for dual-chamber pacemaker implantation per the current guideline	LBBaP	Sinus node dysfunction (25.1%), Atrioventricular block (74.9%)	Sinus node dysfunction (59.9%), Atrioventricular block (40.1%)	11.1±7.5m
Takahashi (2023)	Retrospective cohort	Consecutive patients who underwent dual-chamber pacemaker implantation (PMI) for atrioventricular conduction disturbance (AVCD) based on current guidelines and had RV leads placed in the His bundle region or the RV septum region were enrolled.	His pacing	Atrioventricular conduction disturbance	Atrioventricular conduction disturbance	569±211d

Ravi-1 (2022)	Retrospective cohort	Permanent pacemaker implantation with RVP and LBBaP. Patients with <6 months of follow-up, left ventricular ejection fraction ≤35%, and known history of AF at initial implant, were excluded.	LBBaP	Sinus node dysfunction (20.2%), Atrioventricular block (79.8%)	Sinus node dysfunction (23.6%), Atrioventricular block (76.4%)	600±278d
Ravi-2 (2020)	Retrospective cohort	Patients undergoing initial dual-chamber pacemaker implants	His pacing	Sinus node dysfunction (51.4%), Atrioventricular block (48.6%)	Sinus node dysfunction (59.2%), Atrioventricular block (40.8%)	1.95±0.9y
Pastore (2016)	Retrospective cohort	Patients who underwent pacemaker implantation for complete/advanced AVB	His pacing	Complete/advanced AVB	Complete/advanced AVB	58.5±26.5m

**Table 1** Continued

First author (year)	Sample size		Age (years)		Gender (male, %)		Hypertension (%)		Diabetes (%)		LVEF (%)		LAD (mm)	
	CSP group	RVP group	CSP group	RVP group	CSP group	RVP group	CSP group	RVP group	CSP group	RVP group	CSP group	RVP group	CSP group	RVP group
Zhu (2023)	257	270	63.60±13.50	66.90±11.50	46.30	48.15	55.25	60.74	15.17	22.22	62.80±4.90	63.10±5.40	36.90±5.60	37.50±5.90
Takahashi (2023)	22	47	79.00±8.00	78.00±8.00	36.36	55.32	68.18	72.34	31.82	25.53	68.50±3.60	66.70±5.00	39.40±6.70	36.50±6.30
Ravi-1 (2022)	173	237	73.60±14.18	73.92±13.06	50.29	51.48	84.39	82.28	36.42	30.80	60.07±7.77	59.70±6.28	NA	NA
Ravi-2 (2020)	72	76	72.33±11.58	75.71±10.19	54.17	50.00	83.33	81.58	34.72	32.89	60.20±8.30	61.24±7.58	NA	NA
Pastore (2016)	148	189	74.10±8.50	79.10±8.30	64.86	51.32	85.14	86.24	24.32	23.28	62.00±7.00	60.00±7.00	47.60±8.10	48.20±8.10

**Table 1** Continued

First author (year)	Adjusted confounders	Endpoints definition	AF detection device
Zhu (2023)	Baseline variables considered to be clinically relevant or that showed a univariate relationship with the outcome ( $P$ value < 0.1) were entered into multivariate Cox regression models	New-onset AF was defined as device-detected AF episodes lasting at least 30 s on intracardiac electrogram or surface 12-lead ECG. Atrial high-frequency episodes (atrial rate $\geq 190$ bpm) detected by devices were manually checked to verify the incidence of AF, which might be silent.	Intracardiac electrogram
Takahashi (2023)	Multivariate analysis was performed on all variables, including covariables, that were statistically significant in the univariate analysis and were generally associated with the incidence of newonset AHRE	New-onset atrial high-rate episodes (AHRE), also named subclinical AF, was defined as an atrial high-rate episode that occurred 3 months after PMI and lasted for > 6 min at an atrial heart rate > 190 bpm	Intracardiac electrogram (Pacemaker's memory)
Ravi-1 (2022)	Multivariable analysis adjusted for confounders of congestive heart failure status and use of angiotensin-converting enzyme inhibitor/angiotensinreceptor-blocker drugs	The primary outcome was new-onset AF episode $\geq 30$ seconds detected on scheduled device follow-up performed in-person and remotely. The secondary outcome was new-onset AF episode $\geq 6$ minutes.	Intracardiac electrogram
Ravi-2 (2020)	Cox's proportional hazard model was used to estimate the hazard ratio of the first occurrence of new-onset AF and progression of AF according to different pacing site (HBP or RVP), adjusted for various potential confounders identified between left ventricular ejection fraction (LVEF), left atrial indexed volume, percentage of atrial and ventricular pacing, age, sex, diabetes mellitus, hypertension, coronary disease,	New-onset AF episode7: Device detection of a true AF episode (lasting $\geq 30$ seconds) on intracardiac electrogram. Atrial high-rate episodes (AHREs) from device recordings were manually reviewed to confirm true AF and rule out other causes of AHREs. AHRE episodes were defined as episodes with an atrial intracardiac electrogram rate $\geq 190$ bpm. AHRE episodes $\geq 6$ minutes were also evaluated	Intracardiac electrogram

---

QRS morphology, bundle branch block, use of antiarrhythmic drugs (propafenone, flecainide, dofetilide, sotalol, dronedarone, and amiodarone)

---

Pastore (2016)

Cox's proportional hazard model was used to estimate hazard ratio of first occurrence of persistent or permanent AF for different RV pacing site (RVA, RVS, and HA) adjusted for various potential confounders selected by forward stepwise method (Wald) between: LV volumes (EDV), LVEF, left atrium diameter, per cent of atrial and ventricular pacing, age, gender, diabetes, hypertension, coronary disease, QRS morphology (BBB), use of anti-arrhythmic drugs (propafenone, flecainide, and amiodarone), angiotensin I-converting enzyme inhibitory (ACE I) or angiotensin II receptor blocker (ARB), and previous AF event.

Follow-up examinations were conducted at 6-month intervals to seek (i) the first occurrence of persistent or permanent AF in patients without a prior AF history, and (ii) the first occurrence of progression to persistent or permanent AF in patients with previous AF event before PM implantation.

Implanted device



**Table 2** The subgroup analysis for the rate of new-onset AF for CSP group

Factors	Numbers of study	Pooled incidence	95% CI	I <sup>2</sup> (%)	<i>P</i> value	<i>P</i> for interaction
<b>Indication of implant</b>						0.673
SND and AVB	3	0.10	0.04-0.18	-	0.000	
AVB	2	0.07	0.03-0.13	-	0.000	
<b>Pacing type of CSP</b>						0.161
LBBaP	2	0.06	0.04-0.09	-	0.000	
His pacing	3	0.12	0.04-0.23	-	0.000	
<b>Sample size</b>						0.001
> 100	3	0.07	0.05-0.09	-	0.000	
≤ 100	2	0.18	0.10-0.26	-	0.000	
<b>New-onset AF type</b>						0.827
Clinical AF	4	0.09	0.05-0.14	76.09	0.000	

Subclinical AF	1	0.09	0.03-0.28	-	0.030
<b>Follow-up</b>					0.560
> 24	1	0.07	0.04-0.14	-	0.000
≤ 24	4	0.09	0.04-0.16	76.30	0.000

SND: sinus node dysfunction; AVB: atrioventricular block; CSP: conduction system pacing; LBBaP: left bundle branch area pacing; AF: atrial fibrillation

**Table 3** The subgroup analysis for the rate of new-onset AF for RVP group

Factors	Numbers of study	Pooled incidence	95% CI	I <sup>2</sup> (%)	<i>P</i> value	<i>P</i> for interaction
<b>Indication of implant</b>						0.788
SND and AVB	3	0.24	0.14-0.36	-	0.000	
AVB	2	0.25	0.20-0.32	-	0.000	
<b>Sample size</b>						0.000
> 100	3	0.18	0.15-0.21	-	0.000	
≤ 100	2	0.42	0.34-0.51	-	0.000	
<b>New-onset AF type</b>						0.006
Clinical AF	4	0.23	0.15-0.31	83.42	0.000	
Subclinical AF	1	0.45	0.31-0.59	-	0.030	
<b>Follow-up</b>						0.253
> 24	1	0.20	0.15-0.27	-	0.000	

$\leq 24$	4	0.28	0.17-0.41	90.15	0.000
-----------	---	------	-----------	-------	-------

SND: sinus node dysfunction; AVB: atrioventricular block; RVP: right ventricular pacing; AF: atrial fibrillation

**Table 4** The subgroup analysis for the pooled risk of new-onset AF between CSP and RVP group

Factors	Numbers of study	Risk Ratio	95% CI	I2 (%)	<i>P</i> value	<i>P</i> for interaction
<b>Indication of implant</b>						0.447
SND and AVB	3	0.41	0.29-0.56	0.00	0.000	
AVB	2	0.31	0.16-0.59	0.00	0.000	
<b>Pacing type of CSP</b>						0.811
LBBaP	2	0.37	0.24-0.55	0.00	0.000	
His pacing	3	0.40	0.26-0.60	0.00	0.000	
<b>Sample size</b>						0.682
> 100	3	0.37	0.26-0.52	0.00	0.000	
≤ 100	2	0.42	0.25-0.68	39.30	0.001	
<b>New-onset AF type</b>						0.345
Clinical AF	4	0.40	0.30-0.54	0.00	0.000	

Subclinical AF	1	0.20	0.05-0.79	0.00	0.022	
<b>Follow-up</b>						0.870
> 24	1	0.36	0.17-0.75	0.00	0.006	
≤ 24	4	0.38	0.28-0.53	0.00	0.000	

SND: sinus node dysfunction; AVB: atrioventricular block; CSP: conduction system pacing; RVP: right ventricular pacing; LBBaP: left bundle branch area pacing; AF: atrial fibrillation