

COVID-19 Impact on Patients with Immune-Mediated Rheumatic Disease: A Comparative Study of Disease Activity and Psychological Well-Being Over Six Months

Claudia Marques^{1*}, Marcelo M Pinheiro^{2¶}, Jennifer Lopes^{3&}, Sandra Lúcia Euzébio Ribeiro^{4&}, Mary Vânia Marinho de Castro^{4&}, Lilian David de Azevedo Valadares^{5&}, Aline Ranzolin^{5&}, Nicole Pamplona Bueno de Andrade^{6&}, Rafaela Cavaleiro do Espírito Santo^{6&}, Nafice Costa Araújo^{7&}, Cintya Martins Vieira^{8&}, Valéria Valim^{9&}, Flavia Patricia Sena Teixeira Santos^{10&}, Laurindo Ferreira da Rocha Junior^{11&}, Adriana Maria Kakehasi^{10¶}, Ana Paula Monteiro Gomides Reis^{12¶}, Edgard Torres dos Reis-Neto^{2¶}, Gecilmara Salviato Pileggi^{2¶}, Gilda Aparecida Ferreira^{10¶}, Licia Maria Henrique da Mota^{13¶}, Ricardo Machado Xavier^{6¶}.

1. Department of Rheumatology, Hospital das Clínicas da Universidade Federal de Pernambuco/Ebserh, Recife, Pernambuco, Brazil
2. Department of Rheumatology, Escola Paulista de Medicina/ Universidade Federal de São Paulo (EPM/ UNIFESP), São Paulo, Brazil
3. Postgraduate Program of Translational Health – Universidade Federal de Pernambuco.
4. Department of Rheumatology, Faculdade de Medicina da Universidade Federal do Amazonas, Manaus, Amazonas, Brazil
5. Department of Internal Medicine, Hospital Getúlio Vargas, Recife, Pernambuco, Brazil
6. Department of Rheumatology, Hospital de Clínicas de Porto Alegre / Universidade Federal do Rio Grande do Sul, Porto Alegre, Rio Grande do Sul, Brazil
7. Department of Rheumatology, Hospital do Servidor Público Estadual de São Paulo - Instituto de Assistência Médica ao Servidor Público Estadual, São Paulo, Brazil
8. Department of Rheumatology, Hospital Universitário da Universidade Federal de Juiz de Fora, Juiz de Fora, Minas Gerais, Brazil
9. Department of Rheumatology, Universidade Federal de Sergipe
10. Department of Rheumatology, Hospital das Clínicas - Universidade Federal de Minas Gerais, Belo Horizonte, Minas Gerais, Brazil
11. Department of Rheumatology, Instituto de Medicina Integral Professor Fernando Figueira, Recife, Pernambuco, Brazil
12. Department of Rheumatology, Centro Universitário de Brasília
13. Department of Rheumatology, Universidade de Brasília

* Corresponding author:

E-mail: claudia.reumatologia@gmail.com (CM)

3

¶These authors contributed equally to this work.

&These authors also contributed equally to this work

NOTE: This preprint reports new research that has not been certified by peer review and should not be used to guide clinical practice.

Abstract

Objectives: To compare the impact of COVID-19 on clinical status and psychological condition in patients with immune-mediated rheumatic diseases (IMRD) infected by SARS-CoV-2 with IMRD controls not infected, during a 6-month follow-up.

Methods: The ReumaCoV Brasil is a longitudinal study designed to follow-up IMRD patients for 6 months after COVID-19 (cases) compared with IMRD patients no COVID-19 (controls). Clinical data, disease activity measurements and current treatment regarding IMRD, and COVID-19 outcomes were evaluated in all patients. Disease activity was assessed through validated tools at inclusion and at 3 and 6 months post-COVID-19. The FACIT-F (Functional Assessment of Chronic Illness Therapy) and DASS 21 (Depression, Anxiety and Stress Scale - 21 Items) questionnaires were also applied at 6 months after COVID-19 in both groups before large-scale vaccination. The significance level was set as $p < 0.05$, with a 95% confidence interval.

Results: A total of 601 patients were evaluated, being 321 cases (IMRD COVID-19+) and 280 controls (IMRD COVID-19 -), predominantly female with similar median age. No significant differences were noted in demographic data between the groups, including comorbidities, disease duration, and IMRD. Disease activity assessment over a 6-month follow-up showed no significant difference between cases and controls. While mean activity scores did not differ significantly, some patients reported worsened disease activity post-COVID-19, particularly in rheumatoid arthritis (RA) (32.2%) and systemic lupus erythematosus (SLE) (23.3%). Post-COVID-19 worsening in RA patients correlated with medical global assessment (MGA) and CDAI scores, with a moderate to large effect size. Diabetes mellitus showed a positive association ($OR = 7.15$), while TNF inhibitors showed a protective effect ($OR = 0.51$). Comparing SLEDAI pre- and post-

75 COVID-19, a minority showed increased scores, with few requiring treatment changes.
76 Fatigue, depression, anxiety, and stress were significantly higher in cases compared to
77 controls. Worsening disease activity post-COVID correlated with worsened FACIT-F
78 and DASS-21 stress scale in RA patients. No significant associations were found
79 between COVID-19 outcomes and post-COVID-19 disease activity or psychological
80 assessments.

81 **Conclusions:** Post-COVID-19 IMRD patients show significant psychological well-
82 being deterioration despite similar disease activity scores. The variability in reports on
83 IMRD flares and the potential trigger of SARS-CoV-2 for autoimmune manifestations
84 underline the need for detailed clinical assessment and a comprehensive approach to
85 managing them.

86 Introduction

87 The COVID-19 pandemic caused by the SARS-CoV-2 virus represents one of
88 the greatest public health challenges worldwide. The infection has raised concerns
89 about how the disease behaves in patients with immune-mediated rheumatic diseases
90 (IMRD), particularly in terms of flares after infection and immunosuppressive
91 treatment as potential risk factors for COVID-19 severity. Since 2020, much
92 information has been published about the understanding of this association and its
93 implications, but few studies have evaluated rheumatic disease flare prospectively post-
94 COVID-19 (1) and existing data are still controversial.

95 Some individuals with immune-mediated rheumatic diseases (IMRD) may
96 experience exacerbation following SARS-CoV-2 infection. However, uncertainties
97 persist regarding whether these exacerbations are directly linked to disease activity or
98 represent manifestations associated with COVID-19 itself. The phenomenon

commonly referred to as "Long COVID" has been associated with a diverse range of clinical manifestations, encompassing joint pain, fatigue, and psychological symptoms like depression and anxiety, which can endure for several months post-infection [2]. In patients with IMRD, the presence of these symptoms may be connected to disease flares, introducing ambiguity in determining the appropriate course of treatment. Additionally, some authors have highlighted psychosomatic aspects or a fibromyalgia-like presentation, particularly as the prevalence increased following the initial wave of the pandemic. This increase appears to be more correlated with heightened fears, uncertainties, and lockdown strategies, as biological abnormalities such as impaired immune response or viral persistence have not been conclusively identified yet (2).

This study aimed to assess the disease activity status in patients with immune-mediated rheumatic diseases (IMRD) who had experienced COVID-19, comparing them to those who did not contract the virus, over a 6-month follow-up period. Furthermore, the objective was to delineate the prevalence of fatigue and psychological disorders, including depressive symptoms, anxiety, and stress, and to investigate the potential association of these symptoms with IMRD flares.

Materials and Methods

Study design – ReumaCoV Brasil Cohort

This paper presents the protocol for the ReumaCoV-Brasil Registry protocol as described elsewhere (3). Briefly, a prospective observational cohort was carried out in 13 university centers distributed along all five Brazilian geographic regions, including patients with IMRD and COVID-19 and a comparison group (patients with only IMRD), with a follow-up time of 6 months. Patients were evaluated in three consecutive visits: visit 1 (inclusion), visit 2 (3 months) and visit 3 (6 months), from May to

123 December 2020. Disease activity status in the medical record of the most recent
124 consultation, carried out at least in the last 6 months before inclusion, was considered
125 as pre-COVID status. The post-COVID status was that which the patient presented at
126 inclusion in the study.

127 **Disease activity evaluation**

128 In all visits, data related to disease activity was collected, using specific validated
129 instrument, mentioned here are those included in this analysis: Clinical Disease
130 Activity Index (CDAI)(4) for RA patients, Systemic Lupus Erythematosus Disease
131 Activity Index 2000 (SLEDAI-2k) (5)in SLE patients, Bath Ankylosing Spondylitis
132 Disease Activity Index (BASDAI)(6) for patients with SpA. Besides the activity scores,
133 medical global assessment (MGA) and patient global assessment (PGA) were collected
134 regarding disease activity, using a visual analogue scale (VAS) from 0 to 10 points,
135 being 10 the better score, and the patient opinion regarding DRIM worst since the last
136 visit, also using a VAS from 0 to 10.

137 **Disease flare definition**

- 138 - Rheumatoid arthritis: worsening of symptoms compared to the pre-COVID-19
139 state plus an increase of 4.5 points in the CDAI and/or need to change treatment
140 (7).
- 141 - Systemic Lupus Erythematosus: worsening of symptoms compared to the pre-
142 COVID-19 state plus an increase at least 4 points in the SLEDAI and/or need
143 to change treatment (8).
- 144 - Spondyloarthritis: worsening of symptoms compared to the pre-COVID-19
145 state plus an increase at least 2 points in BASDAI and/or need to change
146 treatment(9).

147 **Psychological distress evaluation**

148 At visit 3, two questionnaires were administered: one to assess fatigue, using
149 The Functional Assessment of Chronic Illness Therapy – Fatigue Scale (FACIT-F)(10),
150 and other to assess mental symptoms, using The Depression, Anxiety and Stress Scale
151 (DASS-21)(11).

152 The FACIT-F Scale is a short, 13-item tool that measures an individual's level
153 of fatigue during their usual daily activities over the past week. The level of fatigue is
154 measured on a four-point Likert scale (4 = not at all fatigued to 0 = very much fatigued).
155 The score varies from 0 to 52, and the lower the result, the higher the level of fatigue.

156 DASS-21 is used as a quantitative measure of distress along the 3 axes of
157 depression (D), anxiety (A) and stress (S) reactions and management. Each of the
158 questions is rated from 0 to 3. Therefore, each of the axes presents partial scores of 0
159 to 18-24 depending on the number of questions assigned.

160 The study was registered at Brazilian Registry of Clinical Trials RBR-33YTQC
161 and approved by the Brazilian National Research Council (CONEP) under number
162 3.955.206. All participants were requested to provide explicit opt-in consent prior to
163 participating in the survey.

164

165 **Statistical analysis**

166 The Kolmogorov Smirnov test was performed to verify the normal distribution
167 of continuous variables. As non-normality was verified, the median was used as a
168 measure of central tendency with the respective interquartile range (IQR).

169 To verify the association among categorical or continuous variables, the chi-
170 square or Fisher test and Pearson test were used, respectively. The Mann-Whitney test

171 was used to compare means and to estimate the effect size by calculating the r index
172 and the R squared (R^2). The r index was used to evaluate the correlation between two
173 variables: small effect size: 0.10; medium effect size: 0.30 and large effect size: 0.50.

174 To determine the effect size (ES) for comparing means, Cohen's d test was used,
175 interpreted as follows: 0.2 to 0.3 for small effect (the difference between the groups is
176 subtle); around 0.5 as medium effect (moderate difference between the groups) and 0.8
177 or more as large effect (substantial difference between the groups). To compare the
178 variables across three visits, the One-way Anova test (CI 95%) was used for repeated
179 measures.

180 For this analysis, the SPSS statistical package, version 29.0.2.0 and the Graph
181 Pad Prism software, Version 10.1.1 (270), November 21, 2023, were used. The
182 significance level was set at $p < 0.05$, with 95% confidence interval.

183

184 Results

185 A total of 601 patients were evaluated, including 321 cases (IMRD COVID+)
186 and 280 controls (IMRD COVID-), with the majority being female with similar median
187 age. No differences were observed regarding demographic data between the two
188 groups, including comorbidities, disease duration and IMRD. A higher frequency of
189 social isolation was observed in the control group ($p=0.001$), as well as they were on
190 TNFi treatment ($p=0.003$). Table 1 summarizes the clinical and demographic data at
191 baseline.

192

193

194

Table 1. Clinical and demographic data of the sample, comparing IMRD patients with COVID-19 versus without COVID-19 at baseline. Chi square test, unless otherwise noted.

	Cases (IMRD COVID +) n=321		Controls (IMRD COVID -) N=280		
	n	%	n	%	P-value
Female	275	85.7	237	84.6	0.724
Age (median, IQR)	46 (37-57)		49 (38-57)		0.136**
Ethnicity					
White	105	32.7	99	35.3	0.601
Non-white	216	67.3	181	64.7	
Instruction					
Illiterate	1	0.3	2	0.7	0.631
< 8 years	78	24.3	74	26.5	
> 8 years	242	75.4	204	72.8	
Profession					
Public attendance	41	12.8	33	11.7	0.030
Health	34	10.6	13	4.7	
Security	8	2.5	3	1.1	
Education	32	10.0	25	9.0	
Housewife	90	28.1	77	27.6	
Others	116	36.0	129	45.9	
Active at work	166	51.9	125	44.8	0.084
Social isolation	162	50.5	188	67.1	0.001
Comorbidities					
Hypertension	123	38.3	120	42.9	0.258
Obesity	48	15.0	34	12.1	0.317
Diabetes	31	9.7	22	7.9	0.438
Lung disease	20	6.2	16	5.7	0.790
Kidney disease	20	6.2	16	5.7	0.790
Cardiopathy	12	4.3	13	4.6	0.734
No comorbidities	107	33.3	99	35.4	0.602
Smoking	11	3.7	15	4.6	0.580
Ethilism	10	3.1	8	2.8	0.835
Diagnosis					
SLE	137	42.5	112	39.4	0.183
RA	93	28.9	105	37.0	
Axial SpA	23	7.1	30	10.6	
Psoriatic arthritis	21	6.5	12	36.4	
Systemic sclerosis	17	5.3	10	3.6	
Sjögren disease	12	3.7	5	1.8	
Miopathy	7	2.2	2	0.7	
Others	11	3.4	4	1.4	
Disease duration, years (median, IQR)	10 (5-15)		10 (6-18)		0.146**
Medication IMRD					
Hydroxychloroquine	139	43.3	113	40.4	0.465
Oral corticosteroid	137	42.7	109	38.9	0.351
Methotrexate	72	22.4	73	26.1	0.298
TNFi	61	19.0	82	29.3	0.003
Azathioprine	48	15.0	30	10.7	0.123
Leflunomide	36	11.2	23	8.2	0.217
Mycophenolate mofetil	28	8.7	24	8.6	0.948
Tocilizumab	14	4.4	23	8.2	0.050
Rituximab	5	1.6	6	2.1	0.762*
IL-17i	8	2.5	2	0.7	0.115*
JAKi	8	2.5	4	1.4	0.396*
Abatacept	4	1.2	2	0.7	0.690*
Belimumab	3	0.9	3	1.1	0.591*
Cyclophosphamide (pulse therapy)	3	0.9	3	1.1	1.000*
Sulfasalazine	3	0.9	6	2.1	0.316*

Chi square test, unless otherwise noted. *Fisher exact test; **Mann-Whitney test; CI 95%. SLE: systemic lupus erythematosus; RA: rheumatoid arthritis; Axial SpA: axial spondyloarthritis; Pso arthritis: psoriatic arthritis; TNFi: tumour necrosis factor inhibitor; IL-17i: interleucine 17 inhibitor; JAKi: janus kinase inhibitor

201 In the group of patients with COVID-19 (n=321), the most frequent symptoms
202 were headache (60.6%), fever (55.6%), dysgeusia (54.3%), asthenia (53.7%), anosmia
203 (52.5%) and cough (49.1%). Dyspnea was reported in 35.1% of cases. The medications
204 used to treat COVID-19 were analgesics (53.7%), azithromycin (40.7%), oral
205 corticosteroids (20.2%) and hydroxychloroquine (10.2%), but 16.1% did not use any
206 medication.

207 Regarding COVID-19 outcomes, hospital care was sought by 77 (23.9%)
208 patients and 29 (9.0%) were hospitalized. Of these, 3 patients were admitted to the
209 intensive care unit and used mechanical ventilation. None of the patients died.

210

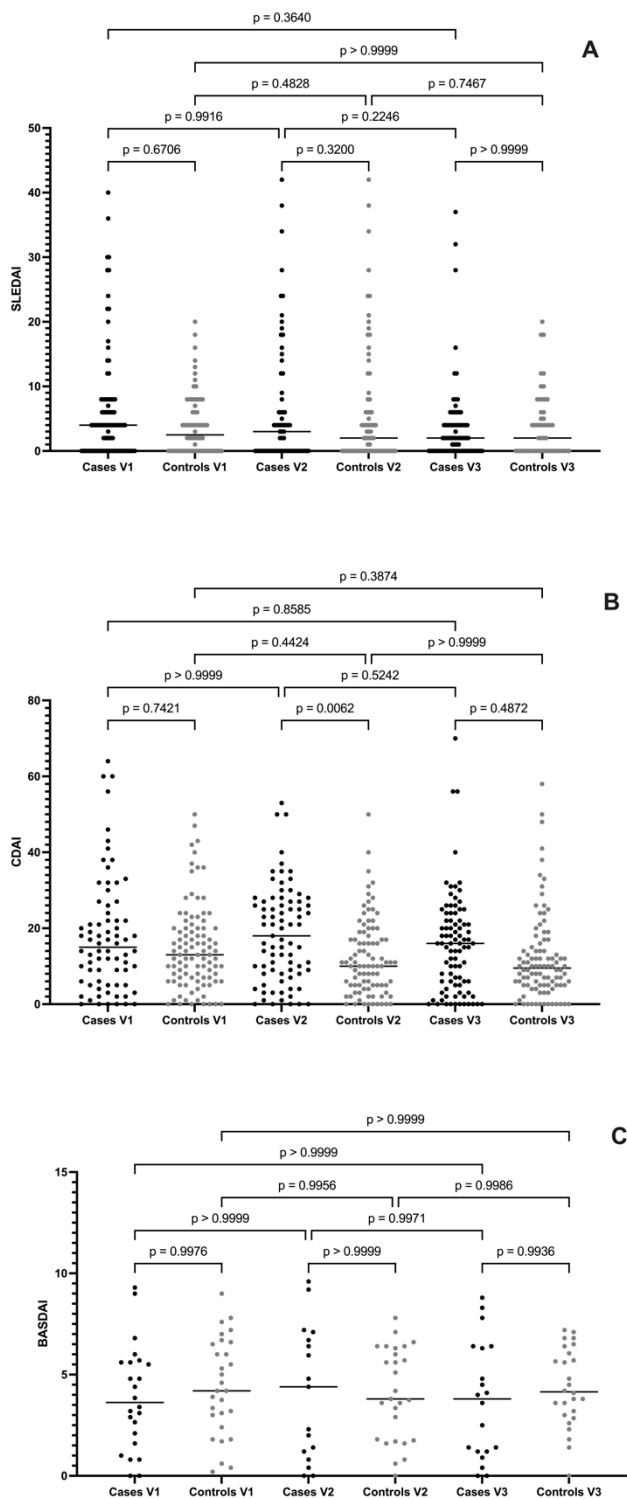
211 **Disease activity assessment**

212 There was no significant difference comparing cases and controls in a 6-month
213 follow-up (V1, V2, and V3), regardless of IMRD (Figure 1).

214

215 Figure 1. Comparison of disease activity scores across the three study visits (v1, V2 e
216 V3) in patients with systemic lupus erythematosus, measured by SLEDAI (A),
217 rheumatoid arthritis, measured by CDAI (B) and axial spondylarthritis patients,
218 measured by BASDAI, comparing cases and controls matched to sex, age and
219 epidemiological exposition.

220

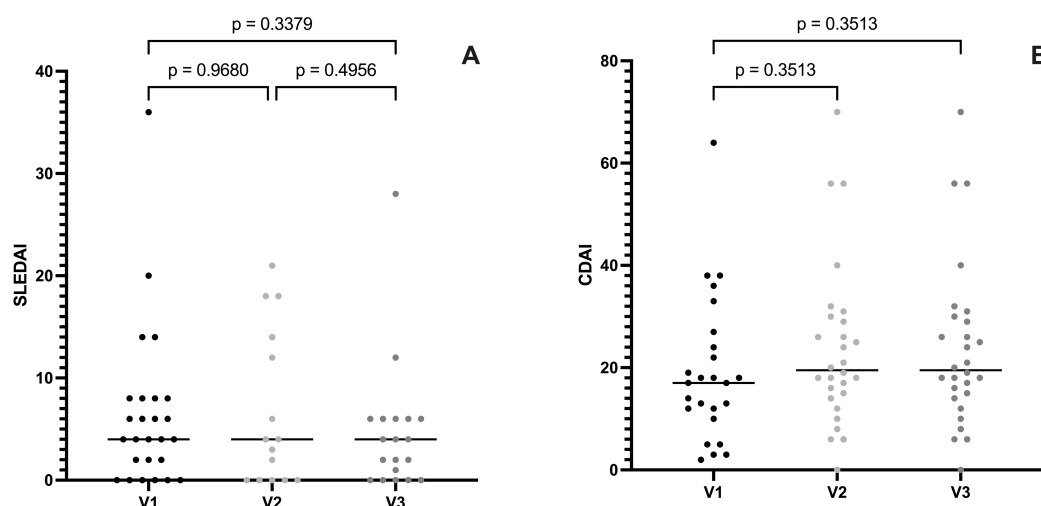


221 V1: Visit 1 (inclusion); V2: Visit 2; V3: Visit 3
222 CDAI: Clinical Disease Activity Score; SLEDAI: Systemic Lupus Erythematosus Disease Activity Index; BASDAI: Bath
223 Ankylosing Spondylitis Disease Activity Index
224 One-way Anova test (CI 95%), repeated measures, multiple comparison of the mean of each column with the mean
225 of every other column.
226

227

228 Although no difference was demonstrated in the mean activity scores, some
229 patients self-reported worsening of the disease activity after COVID-19 [30 with RA
230 (32.2%), 32 with SLE (23.3%) and 2 with SpA (8.6%)]. Exploring these groups further,
231 we also did not observe any significant difference in the mean activity score in RA and
232 SLE patients (Figure 2).

233 Figure 2. Comparison of disease activity scores across the three study visits, only in
234 patients with systemic lupus erythematosus (SLEDAI) (A) and rheumatoid arthritis
235 (CDAI) (B) who self-reported clinical worsening after COVID-19



236

237 Visit 1 (inclusion); V2: Visit 2; V3: Visit 3.
238 CDAI: Clinical Disease Activity Score; SLEDAI: Systemic Lupus Erythematosus Disease Activity Index.
239 One-way Anova test (CI 95%), repeated measures, multiple comparison of the mean of each column with the
240 mean of every other column

241

242 In RA patients that self-reported worsening of disease activity after COVID-19,
243 we applied the flare definition, comparing the CDAI pre-COVID with the CDAI post-
244 COVID (inclusion), visit 2 and visit 3, in a paired way. At inclusion, 12 patients
245 (40.0%) had an increased CDAI ≥ 4.5 points compared to pre-COVID status, but only
246 1 required a change in treatment. At visit 2, compared with visit 1, 5 new patients
247 presented an increased CDAI ≥ 4.5 points and 7 patients improved compared to the

previous visit. At visit 3, 12 patients presented an increased CDAI, and of these, 8 new patients, who had not worsened at visit 2, and only one needed change of treatment.

Besides, we compared the tender joint count (TJC), swollen joint count (SJC), patient global assessment (PGA) and medical global assessment (MGA) across the three visits, no significant difference was observed. Eight patients in this group (26.6%) self-reported worsening of joint manifestations.

Comparing the disease activity in the group of RA patients who self-reported worsening with those who did not worse, there was an association with post-COVID MGA, assessed at baseline (ES= - 0.56; CI95% -1.01 to -0.11, p=0.007) and with CDAI and all its components at visit 3 (Table 2).

Table 2. Comparison between Pre- and Post-COVID mean scores in patients with RA who reported worsening versus those who did not report it in the visit 3

	Worse in visit 3					
	No		Yes			
	Mean	SD	Mean	SD	p-value	Independent sample effect size (ES)*
CDAI pre-COVID [#]	17.5	16.2	19.2	14.1	0.330	-0.110 (-0.59 to 0.37)
TJC pre-COVID	5.9	6.8	6.4	5.5	0.369	-0.079 (-0.53 to 0.38)
SJC pre-COVID	3.6	6.0	3.3	5.6	0.404	0.057 (-0.40 to 0.51)
PGA pre-COVID	4.8	3.0	8.6	16.4	0.055	-0.385 (-0.85 to 0.087)
MGA pre-COVID	3.2	2.7	3.8	2.6	0.210	-0.196 (-0.66 to 0.27)
CDAI post-COVID ^{&}	19.0	18.4	26.5	19.3	0.040	-0.397 (-0.83 to 0.04)
TJC post-COVID	6.5	8.4	9.7	8.6	0.044	-0.384 (-0.82 to 0.05)
SJC post-COVID	3.1	4.8	4.8	7.0	0.113	-0.271 (-0.70 to 0.16)
PGA post-COVID	5.5	3.1	6.4	2.9	0.090	-0.304 (-0.74 to 0.140)
MGA post-COVID	3.4	2.9	5.0	2.7	0.007	-0.563 (-1.01 to -0.11)
CDAI V3	11.7	9.6	23.6	15.9	0.001	-0.996 (-1.45 to -0.51)
TJC V3	3.5	3.6	7.5	6.9	<0.001	-0.801 (-1.25 to -0.34)
SJC V3	1.3	2.2	4.7	6.3	0.001	-0.818 (-1.27 to -0.36)
MGA V3	2.7	2.3	5.0	2.2	0.001	-1.003 (-1.46 to -0.53)
PGA V3	4.2	2.7	6.8	2.3	0.001	-1.005 (-1.45 to -0.53)

CDAI: clinical disease activity score; TJC: tender joint count; SJC: swollen joint count; PGA: patient global evaluation; MGA: medical global evaluation. *Cohen's d test (CI95%): 0.2 to 0.3: Small effect - the difference between the groups is subtle. About 0.5: Medium effect - moderate difference between the groups. 0.8 or more: Large effect - substantial difference between the groups.

The size effect for MGA post COVID (V1) mean difference means was moderate (-0.56; CI95% -1.01 to -0.11) and for CDAI (-0.996; CI95% -1.45 to -0.51),

268 TJC (-0.801; CI 95% -1.25 to -0.34), SJC (-0.818; CI -1.27 to -0.36), MGA (-1.003; CI
269 -1.46 to -0.53) and PGA at V3 (-1.005; CI -1.45 to -0.53) was a large effect,
270 demonstrating substantial difference between the groups.

271 Post-COVID worsening in patients with RA was associated with diabetes
272 mellitus (OR=7.15; CI95% 1.7-29.4, p=0.005) and protectively with current use of TNF
273 inhibitors before the SARS-CoV-2 infection (OR=0.51; CI95% 0.2-0.9, p=0.026).

274 Among the patients with SLE who self-reported worsening of disease after
275 COVID-19, 10 of them reported the appearance of new clinical manifestations.
276 However, no significant differences were observed regarding gender, age,
277 comorbidities, or concomitant medications. Worsening was only associated with
278 anosmia, as a symptom of COVID-19 (OR=2.43; CI95% 1.07-5.52, p=0.03). The self-
279 reported clinical manifestations by SLE patients who were worse after COVID-19
280 (n=32) at visit 3 were skin rash (5 patients), arthritis (3 patients), proteinuria (2 patients)
281 and interstitial lung disease (1 patient).

282 Comparing the SLEDAI pre- and post-COVID through the flare definition, we
283 observed that 6 patients (18.0%) had an increased SLEDAI ≥ 4.0 points, but only 2
284 required a change in treatment. At visit 2, compared with visit 1, most patients showed
285 SLEDAI improvement and only 3 patients had it increased at visit 3. However, 3 new
286 patients had an SLEDAI increasing compared with the visit 2.

287 Among SpA patients, only 2 patients self-reported worsening after COVID-19
288 and one of them had progressive worsening in all three visits, based on the BASDAI.

289 There was no statistically significant association between COVID-19 outcomes
290 (hospital care, hospitalization, and ICU admission) with post-COVID disease activity
291 at visit 3.

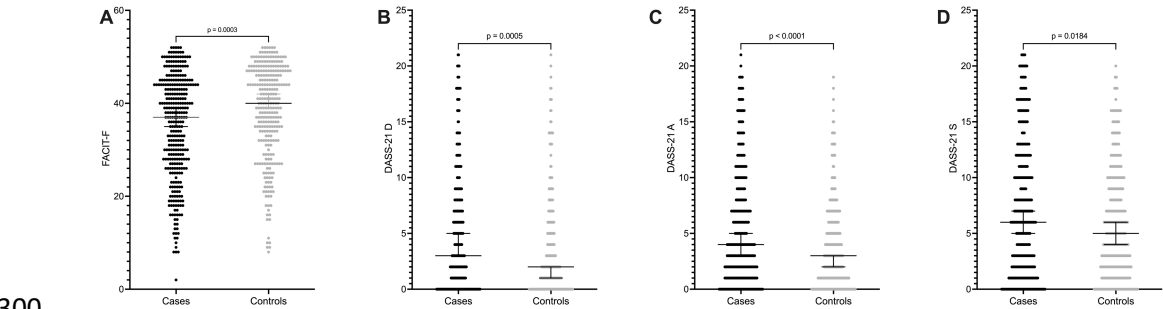
292

293 **Fatigue, depression, anxiety, and stress assessment**

294 After a 6-month follow-up, a statistically significant difference was observed
295 through FACIT and DASS 21 questionnaires in their three domains comparing cases
296 and controls (Figure 3).

297

298 Figure 3. Comparison among FACIT (A), DASS-21 D (B), DASS-21 A (C) and
299 DASS-21 S (D) scores median (IQR) in cases and controls at visit 3.



301 IQR: Interquartil range. FACIT-F: Functional Assessment of Chronic Illness Therapy – Fatigue; DASS-21 D: Depression Anxiety and
302 Stress Scale dominium depression; DASS-21 A: Depression Anxiety and Stress Scale dominium anxiety; DASS-21 S: Depression
303 Anxiety and Stress Scale dominium stress.. Mann-Whitney test; CI=95%

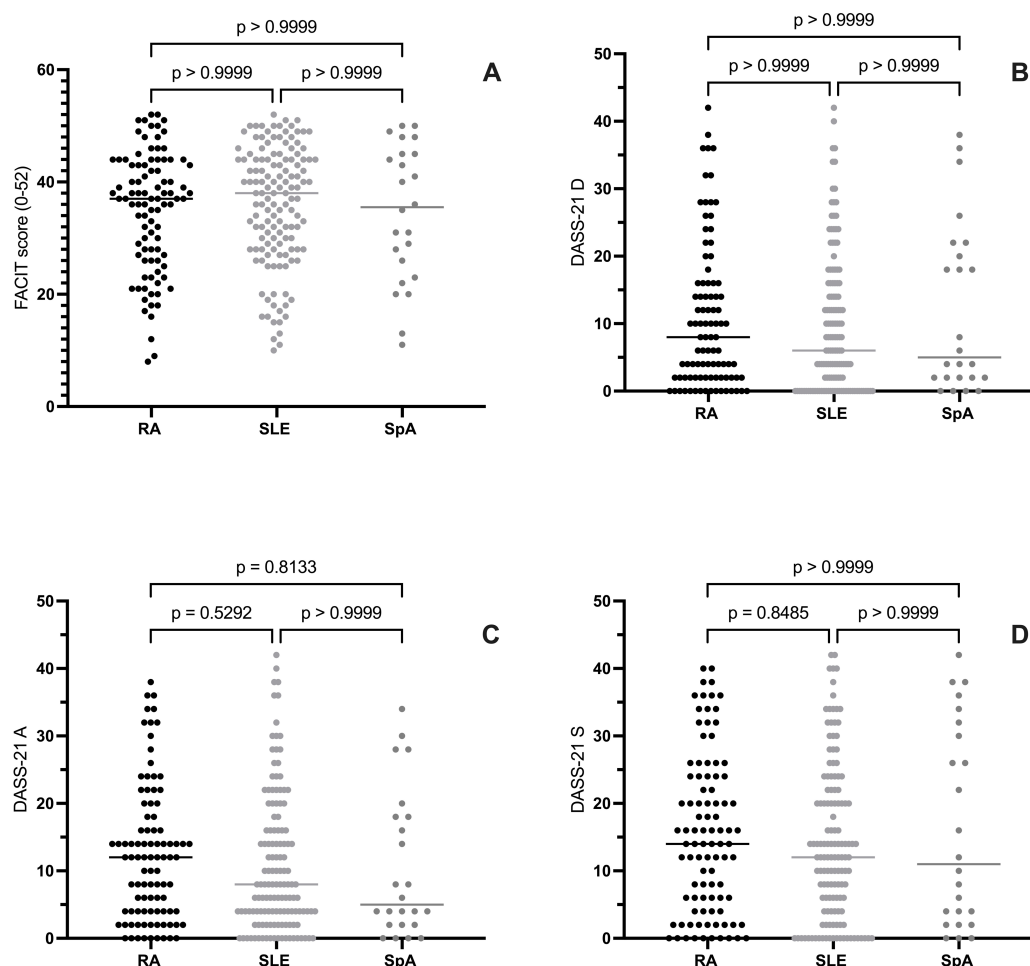
304

305

306 The median FACIT score was 37 (27-44) in cases and 40 (32-47) in controls
307 (p=0.0003); DASS-21 D median in cases was 3 (0-8) and 2 (0-5) in controls
308 (p=0.0005); DASS-21 A median in cases was 4 (1-9) and 3 (1-6) in controls (p<0.001)
309 and DASS-21 S median in cases was 6 (2-12) and 5 (2-9) in controls (p<0.018) No
310 difference was observed regarding the FACIT-F and the DASS-21 scores when
311 comparing patients with RA, SLE and SpA in each case group (Figure 4).

312

Figure 4. Distribution and comparison among FACIT (A), DASS21 D (B), DASS 21 A (C) and DASS 21 S (D) median scores after a 6-month follow-up in patients with rheumatoid arthritis (RA), systemic lupus erythematosus (SLE) and axial spondyloarthritis (axSpA) only in cases group (IMRD COVID-19 +)



317

318 *FACIT-F: Functional Assessment of Chronic Illness Therapy – Fatigue; DASS-21 D: Depression Anxiety and Stress Scale dominium depression;*
 319 *DASS-21 A: Depression Anxiety and Stress Scale dominium anxiety; DASS-21 S: Depression Anxiety and Stress Scale dominium stress; PsoA:*
 320 *psoriatic arthritis; RA: rheumatoid arthritis; axSpA: axial spondyloarthritis; SLE: systemic lupus erythematosus. Independent-Samples Kruskal-*
 321 *Wallis Test, CI 95%.*

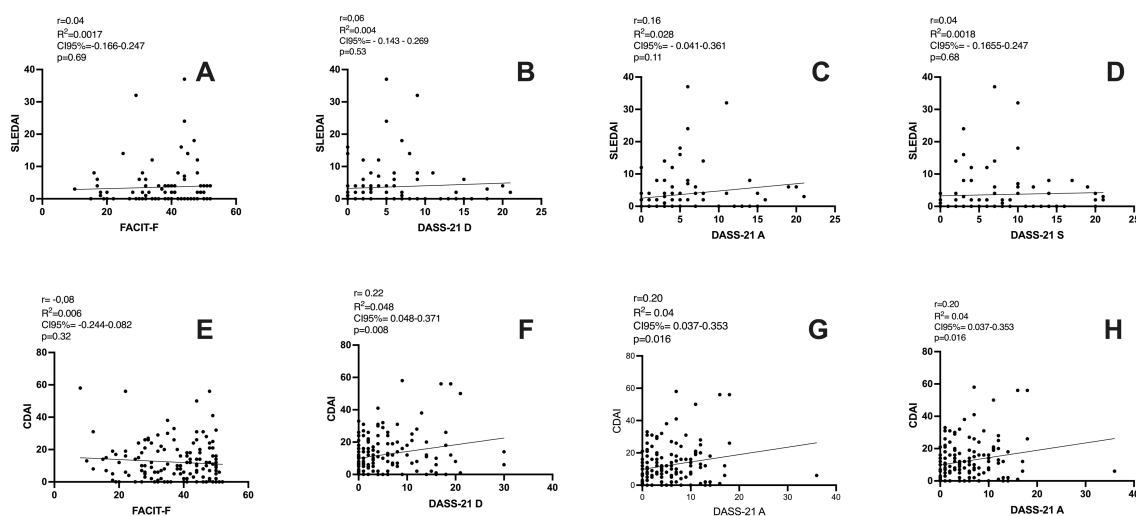
322

323

324 There was no association of FACIT or DASS-21 with comorbidities, IMRD
 325 endpoints (type and specific therapy), and outcomes related to COVID, such as
 326 symptoms and treatment, in univariate linear models. Considering the FACIT-F and

DASS-21 scores, there was not significant correlation between the disease activity in RA and SLE patients from case group (Figure 5).

Figure 5. Correlation between disease activity in patients with systemic lupus erythematosus, measured by SLEDAI, and rheumatoid arthritis, measured by CDAI, only in case group (IMRD COVID-19 +), with FACIT-F (A and E) and DASS 21-D (B and F), DASS 21-A (C and G) and DASS 21-S (D and H) scores



Specifically analyzing the group of patients with worsening of disease activity after COVID-19, we observed that RA patients also had a worsening of FACIT-F (31.5 vs. 36.4; $p = 0.047$) and DASS-21-S (19.0 vs. 13.0; $p = 0.031$) when compared to those with no worsening activity. Also, the means was considered as moderate for FACIT-F (0.47; from 0.03 to 0.91) and DASS 21-S (-0.44; from -0.88 to -0.007) (Table 3). In SLE patients, no significant difference was observed.

Table 3. Comparison among mean scores for FACIT, DASS 21-D, DASS 21-A and DASS-21 S in patients with RA who reported worsening versus those who did not report it

Worse at visit 3 (RA patients)					
No		Yes			
Mean	SD	Mean	SD	p-value	Independent sample effect size*

FACIT	36.4	9.7	31.5	11.3	0.017	0.47 (0.03 to 0.91)
DASS 21-D	9.5	10.5	12.6	10.9	0.094	-0.29 (-0.73 to 0.144)
DASS 21-A	11.3	10.0	14.4	9.9	0.090	-0.30 (-0.73 to 0.13)
DASS 21-S	13.7	12.4	19.0	9.7	0.023	-0.44 (-0.88 to -0.007)

* Cohen's d (CI95%): 0.2 to 0.3: Small effect - the difference between the groups is subtle. About 0.5: Medium effect - moderate difference between the groups. 0.8 or more: Large effect - substantial difference between the groups.

There was no statistically significant association between COVID-19 outcomes (hospital care, hospitalization, and ICU admission) with FACIT-F and DASS-21 scores at visit 3.

Discussion

Our results demonstrated that the disease activity scores did not differ significantly in IMRD patients during a 6-month follow-up after COVID-19 in comparison to those who did not contract the virus. However, the clinical worsening was related to fatigue, depression, anxiety, and stress.

Nowadays, the data regarding the association between SARS-CoV-2 infection and IMRD flare are controversial, especially because the published studies have heterogeneous samples and different designs. Consequently, the current uncertainty revolves around whether the Patient-Reported Outcomes (PROs) are related to IMRD flare itself after COVID-19 or if it is associated with Long Covid or, alternatively, represent a reactive post-infectious immunological response working a potential trigger (1, 12-15).

In rheumatic diseases, a flare is defined as any exacerbation of disease activity that, if persistent, would typically necessitate the initiation or modification of therapy. It signifies a cluster of symptoms of sufficient duration and intensity to warrant the commencement, alteration, or escalation of therapeutic measures (16). In our study, although there was no

discernible difference in mean activity scores among patients with rheumatoid arthritis (RA), systemic lupus erythematosus (SLE), and spondyloarthritis (SpA), a subgroup of patients reported a deterioration in immune-mediated rheumatic disease (IMRD). In some of these cases, activity scores increased, aligning with the flare definition employed in this investigation. Given the recognized potential for overestimation of IMRD activity tools in patients with conditions like fibromyalgia (17) and other chronic painful disorders, particularly in RA and axial SpA, it becomes imperative to ascertain the presence of "true" disease activity. This determination holds substantial relevance in decision-making processes related to treatment adjustments. Nevertheless, we observed an association between patients' self-reported worsening after 6 months and the Clinical Disease Activity Index (CDAI) score, along with all its individual components, including swollen joint count (SJC). This association suggests a plausible occurrence of flare in this specific subset of patients.

A cross-sectional study, including 32 patients with RA and SpA, demonstrated no relevant change regarding disease activity after COVID-19 in those who interrupted their treatment (1). Data from the COVAD study, a cohort that evaluated 824 patients with IMRD who had at least one SARS-CoV-2 infection, between March 2021 and June 18, 2022 (12), showed that 36.9% of patients experienced at least one flare of the underlying IMRD following COVID-19 infection over a 127 day period (IQR = 62-308 days) from the date of infection to the date of the survey. Females and patients with comorbidities had higher odds of flaring of their disease. Patients who reported flares had worse physical health scores, pain VAS, fatigue VAS, and lower mental health scores compared to those who did not report flares. However, as stated by the authors, "this was a self-reported disease flares without verification by a physician which could

391 be impacted by patients' perceptions of flares and their inability to distinguish from
392 ongoing symptoms of long-COVID syndrome or secondary fibromyalgia".

393 In a study conducted on 92 children with IMRD who have had COVID-19
394 (13), 10% had a relapse of IMRD after infection. The relapse was mild in four and
395 moderate in five cases. One patient had a severe relapse of ARD and required
396 hospitalization, without association with COVID-19 clinical presentation.

397 Similar to other several viral infections, SARS-CoV-2 infection could be
398 potential trigger of reactive and autoimmune diseases by inducing type II and type IV
399 hypersensitivity reactions, leading to autoantibodies production and autoimmune
400 diseases development as long-term complications (18), and in patients with pre-existing
401 IMRD, it may be difficult to identify whether it is a flare of the disease or a post-
402 infection manifestation. A recent study evaluated the effects of COVID-19 on the
403 development and progression of RA using a collagen-induced arthritis (CIA) animal
404 model. The incidence and severity of RA in CIA mice were slightly increased by
405 SARS-CoV-2 spike protein in vivo. In addition, the levels of autoantibodies and
406 thrombotic factors, such as anti-CXC chemokine ligand 4 (CXCL4, also called PF4)
407 antibodies and anti-phospholipid antibodies were significantly increased by SARS-
408 CoV-2 spike protein. Furthermore, tissue destruction and inflammatory cytokine level
409 in joint tissue were markedly increased in CIA mice by SARS-CoV-2 spike protein,
410 suggesting that COVID-19 accelerates the development and progression of RA by
411 increasing inflammation, autoantibody production, and thrombosis(19).

412 In an Italian study, 122 consecutive post-COVID-19 cases were evaluated, with
413 the onset of the rheumatic manifestations within 4 weeks from SARS-CoV-2 infection
414 as an inclusion criterion. In this group, it was identified that most patients had
415 inflammatory joint disease (52.5%); 19.7% of cases were diagnosed with connective

416 tissue diseases and 6.6% of cases with vasculitis. It is interesting to note that in this
417 same cohort, patients with inflammatory manifestations post-COVID-19 vaccine were
418 evaluated, and this group had a higher prevalence of patients classified as polymyalgia
419 rheumatica (PMR, 33.1% vs. 21.3%, $p=0.032$) (14). Another study evaluated the
420 presence of arthritis associated with COVID-19 by ultrasound in 10 patients with ($n=4$)
421 and without previous rheumatic disease ($n=6$). In the group without previous disease,
422 4 of the 6 patients presented arthritis for 4 to 16 weeks after infection, comparable to
423 reactive arthritis. One of them developed late-onset rheumatoid arthritis. In the group
424 with previous disease, synovitis and tenosynovitis with positive power Doppler were
425 observed, suggesting a possible flare of the disease after COVID-19 (20).

426 A major concern when interpreting the musculoskeletal symptoms in these
427 patients is the possibility of developing post-Covid syndrome, also known as long
428 Covid. More than 20% of subjects surviving acute COVID-19 may suffer from
429 persisting symptoms and develop new ones after one month and about 5% of all
430 infected individuals develop long-term complications after 6 months, possible due to
431 tissue damage, viral reservoirs, autoimmunity, and persistent inflammation (21, 22).
432 The clinical presentation in these cases, such as fatigue and joint pain, may mimic a
433 disease flare, thereby complicating the decision-making regarding treatment's change.

434 Recent systematic review showed that the prevalence of arthralgia ranges from
435 2% to 65% within a time frame varying from 4 weeks to 12 months after COVID-19.
436 Inflammatory arthritis has been reported with various clinical phenotypes, including
437 RA-like pattern as other prototypical viral arthritis, as well as polymyalgia-like, or
438 acute monoarthritis and oligoarthritis of large joints resembling reactive arthritis or SpA
439 style (23).

440 An Iranian study evaluated the prevalence of musculoskeletal symptoms in 239
441 patients after the acute phase of COVID-19 and its associated factors, using an online
442 questionnaire. Almost all of them (98.74%) had experienced at least one
443 musculoskeletal symptom after recovering from COVID-19, and the most common
444 symptom was fatigue (91.2%), followed by myalgia, headache, and low back pain.
445 High BMI, hospitalization, and ICU admission were associated with a higher risk of
446 musculoskeletal symptoms (24).

447 Besides musculoskeletal symptoms, patients could develop psychological
448 distress after COVID-19, such as depression, anxiety, and stress, symptoms that could
449 also be present in IMRD. In our patients, the frequency of these symptoms in IMRD
450 post COVID-19 was significantly higher than in patients who did not have the infection.
451 Some authors suggested that the term of long COVID is unappropriated and should be
452 replaced by fibromyalgia-like post-COVID syndrome (2).

453 We acknowledge the limitations of our study, such as the fact we have the
454 FACIT and DASS 21 scores only at the last visit and no possibility of comparison with
455 the pre-COVID status. Since the study began in the first months of the pandemic, we
456 did not know yet that these outcomes were important. We decided to include it after the
457 first studies were published demonstrating the association of these symptoms with
458 SARS-CoV-2 infection. However, we know that fatigue, depression, anxiety, and stress
459 are frequent symptoms in patients with IMRD and we have a group that did not have
460 COVID-19 as a comparator, and in the group with COVID-19 these scores were
461 significantly worse. In addition, the greater political and economic instability
462 experienced in our country may have had a direct impact on psychological distress as
463 a bias. On the other hand, we have a representative sample, from various regions of
464 Brazil, with a follow-up period of 6 months, compared with a group of patients with

IMRD matched by sex and age, for the same epidemiological period, one of the main strengths of our study.

Conclusions

Our observational data underscore the complex interplay between COVID-19 and immune-mediated rheumatic diseases (IMRD). While disease activity scores may not exhibit significant differences, individuals with post-COVID-19 IMRD may undergo noteworthy deterioration in psychological well-being. The variations in reports regarding IMRD flares and the potential triggering role of SARS-CoV-2 in autoimmune manifestations underscore the need for thorough clinical assessment and a comprehensive approach to their management.

Acknowledgements

All ReumaCoV Brazil researchers

References

1. Miledi S, Bouzid S, Fazaa A, Sallemi M, Bousaa H, Ben Abdelghani K, Laatar A. COVID-19 in Patients with Systemic Inflammatory Diseases: Impact on Disease Activity. Curr Rheumatol Rev. 2023;19(3):330-5.
2. Mariette X. Long COVID: a new word for naming fibromyalgia? Ann Rheum Dis. 2024;83(1):12-4.

- 488 3. Marques C, Kakehasi AM, Gomides APM, Paiva EDS, Dos Reis Neto ET, Pileggi
489 GCS, et al. A Brazilian Cohort of Patients With Immuno-Mediated Chronic Inflammatory
490 Diseases Infected by SARS-CoV-2 (ReumaCoV-Brasil Registry): Protocol for a Prospective,
491 Observational Study. *JMIR Res Protoc*. 2020;9(12):e24357.
- 492 4. Aletaha D, Nell VP, Stamm T, Uffmann M, Pflugbeil S, Machold K, Smolen JS.
493 Acute phase reactants add little to composite disease activity indices for rheumatoid arthritis:
494 validation of a clinical activity score. *Arthritis Res Ther*. 2005;7(4):R796-806.
- 495 5. Gladman DD, Ibanez D, Urowitz MB. Systemic lupus erythematosus disease activity
496 index 2000. *J Rheumatol*. 2002;29(2):288-91.
- 497 6. Garrett S, Jenkinson T, Kennedy LG, Whitelock H, Gaisford P, Calin A. A new
498 approach to defining disease status in ankylosing spondylitis: the Bath Ankylosing
499 Spondylitis Disease Activity Index. *J Rheumatol*. 1994;21(12):2286-91.
- 500 7. Konzett V, Kerschbaumer A, Smolen JS, Kristianslund EK, Provan SA, Kvien TK,
501 Aletaha D. Definition of rheumatoid arthritis flare based on SDAI and CDAI. *Ann Rheum*
502 *Dis*. 2024;83(2):169-76.
- 503 8. Yee CS, Farewell VT, Isenberg DA, Griffiths B, Teh LS, Bruce IN, et al. The use of
504 Systemic Lupus Erythematosus Disease Activity Index-2000 to define active disease and
505 minimal clinically meaningful change based on data from a large cohort of systemic lupus
506 erythematosus patients. *Rheumatology (Oxford)*. 2011;50(5):982-8.
- 507 9. Gossec L, Portier A, Landewe R, Etcheto A, Navarro-Compan V, Kroon F, et al.
508 Preliminary definitions of 'flare' in axial spondyloarthritis, based on pain, BASDAI and
509 ASDAS-CRP: an ASAS initiative. *Ann Rheum Dis*. 2016;75(6):991-6.

- 510 10. Cella D. The Functional Assessment of Cancer Therapy-Anemia (FACT-An) Scale: a
511 new tool for the assessment of outcomes in cancer anemia and fatigue. *Semin Hematol.*
512 1997;34(3 Suppl 2):13-9.
- 513 11. Henry JD, Crawford JR. The short-form version of the Depression Anxiety Stress
514 Scales (DASS-21): construct validity and normative data in a large non-clinical sample. *Br J*
515 *Clin Psychol.* 2005;44(Pt 2):227-39.
- 516 12. Sandhu NK, Ravichandran N, Nune A, Day J, Sen P, Nikiphorou E, et al. Flares of
517 autoimmune rheumatic disease following COVID-19 infection: Observations from the
518 COVAD study. *Int J Rheum Dis.* 2024;27(1):e14961.
- 519 13. Sinkovec Savsek T, Zajc Avramovic M, Avcin T, Korva M, Avsic Zupanc T, Toplak
520 N. Disease relapse rate in children with autoimmune rheumatic diseases after COVID-19
521 infection and vaccination. *Pediatr Rheumatol Online J.* 2023;21(1):46.
- 522 14. Ursini F, Ruscitti P, Addimanda O, Foti R, Raimondo V, Murdaca G, et al.
523 Inflammatory rheumatic diseases with onset after SARS-CoV-2 infection or COVID-19
524 vaccination: a report of 267 cases from the COVID-19 and ASD group. *RMD Open.*
525 2023;9(2).
- 526 15. van Kessel SAM, Olde Hartman TC, Lucassen P, van Jaarsveld CHM. Post-acute and
527 long-COVID-19 symptoms in patients with mild diseases: a systematic review. *Fam Pract.*
528 2022;39(1):159-67.
- 529 16. Bingham CO, 3rd, Pohl C, Woodworth TG, Hewlett SE, May JE, Rahman MU, et al.
530 Developing a standardized definition for disease "flare" in rheumatoid arthritis (OMERACT 9
531 Special Interest Group). *J Rheumatol.* 2009;36(10):2335-41.

- 532 17. Coskun Benlidayi I. Fibromyalgia interferes with disease activity and biological
533 therapy response in inflammatory rheumatic diseases. *Rheumatol Int.* 2020;40(6):849-58.
- 534 18. Votto M, Castagnoli R, Marseglia GL, Licari A, Brambilla I. COVID-19 and
535 autoimmune diseases: is there a connection? *Curr Opin Allergy Clin Immunol.*
536 2023;23(2):185-92.
- 537 19. Lee AR, Woo JS, Lee SY, Lee YS, Jung J, Lee CR, et al. SARS-CoV-2 spike protein
538 promotes inflammatory cytokine activation and aggravates rheumatoid arthritis. *Cell*
539 *Commun Signal.* 2023;21(1):44.
- 540 20. Vogler D, Ruscitti P, Navarini L, Giacomelli R, Iagnocco A, Hoff P, et al. Diagnosis
541 of COVID-19 associated arthritis in patients with or without underlying rheumatic and
542 musculoskeletal disease supported by musculoskeletal ultrasound: a case series from three
543 European centres. *Clin Exp Rheumatol.* 2023;41(3):656-66.
- 544 21. Global Burden of Disease Long CC, Wulf Hanson S, Abbafati C, Aerts JG, Al-Aly Z,
545 Ashbaugh C, et al. Estimated Global Proportions of Individuals With Persistent Fatigue,
546 Cognitive, and Respiratory Symptom Clusters Following Symptomatic COVID-19 in 2020
547 and 2021. *JAMA.* 2022;328(16):1604-15.
- 548 22. Cervia-Hasler C, Bruning SC, Hoch T, Fan B, Muzio G, Thompson RC, et al.
549 Persistent complement dysregulation with signs of thromboinflammation in active Long
550 Covid. *Science.* 2024;383(6680):eadg7942.
- 551 23. Ciaffi J, Vanni E, Mancarella L, Brusi V, Lisi L, Pignatti F, et al. Post-Acute
552 COVID-19 Joint Pain and New Onset of Rheumatic Musculoskeletal Diseases: A Systematic
553 Review. *Diagnostics (Basel).* 2023;13(11).

- 554 24. Azadvari M, Haghparast A, Nakhostin-Ansari A, Emami Razavi SZ, Hosseini M.
555 Musculoskeletal symptoms in patients with long COVID: A cross-sectional study on Iranian
556 patients. Heliyon. 2022;8(8):e10148.
- 557
- 558