

Genetic susceptibility to schizophrenia through neuroinflammatory pathways is associated with retinal thinning: Findings from the UK-Biobank

Finn Rabe, PhD¹, Lukasz Smigielski, PhD², Foivos Georgiadis, MD¹, Nils Kallen, MD¹, Wolfgang Omlor, MD, PhD¹, Matthias Kirschner, MD¹, Flurin Cathomas, MD¹, Edna Grünblatt, PhD^{2,3,4}, Steven Silverstein, PhD^{5,6,7,8}, Brittany Bloise, MS^{5,6,7,8}, Daniel Barthelmes, MD, PhD⁹, Karen Schaal, MD¹⁰, Jose Rubio, MD, PhD^{11,12,13}, Todd Lencz, PhD^{11,12,13}, & Philipp Homan, MD, PhD^{1,3*}

¹ Department of Adult Psychiatry and Psychotherapy, University of Zurich, Zurich, Switzerland.

² Department of Child and Adolescent Psychiatry and Psychotherapy, University Hospital of Psychiatry Zurich, University of Zurich, Zurich, Switzerland.

³ Neuroscience Center Zurich, University of Zurich and ETH Zurich, Zurich, Switzerland.

⁴ Zurich Center for Integrative Human Physiology, University of Zurich, Zurich, Switzerland.

⁵ Department of Psychiatry, University of Rochester Medical Center, Rochester, New York, USA.

⁶ Department of Ophthalmology, University of Rochester Medical Center, Rochester, New York, USA.

⁷ Department of Neuroscience, University of Rochester Medical Center, Rochester, New York, USA.

⁸ Center for Visual Science, University of Rochester, Rochester, New York, USA.

⁹ Department of Ophthalmology, University Hospital Zurich, University of Zurich, Zurich, Switzerland.

¹⁰ Department of Ophthalmology, Inselspital University Hospital Bern, Bern, Switzerland.

¹¹ Institute of Behavioral Science, Feinstein Institutes for Medical Research, Manhasset, NY, USA.

¹² Division of Psychiatry Research, Zucker Hillside Hospital, Northwell Health, New York, NY, USA.

¹³ Department of Psychiatry, Zucker School of Medicine at Hofstra/Northwell, Hempstead, NY, USA.

The human retina is part of the central nervous system and can be easily and non-invasively imaged with optical coherence tomography. While imaging the retina may provide insights on central nervous system-related disorders such as schizophrenia, a typical challenge are confounders often present in schizophrenia which may negatively impact retinal health. Here, we therefore aimed to investigate retinal changes in the context of common genetic variations conveying a risk of schizophrenia as measured by polygenic risk scores. We used population data from the UK Biobank, including White British and Irish individuals without diagnosed schizophrenia, and estimated a polygenic risk score for schizophrenia based on the newest genome-wide association study (PGC release 2022). We hypothesized that greater genetic susceptibility to schizophrenia is associated with retinal thinning, especially within the macula. To gain additional mechanistic insights, we conducted pathway-specific polygenic risk score associations analyses, focusing on gene pathways that are related to schizophrenia. Of 65484 individuals recruited, 48208 participants with available matching imaging-genetic data were included in the analysis of whom 22427 (53.48%) were female and 25781 (46.52%) were male. Our robust principal component regression results showed that polygenic risk scores for schizophrenia were associated with retinal thinning while controlling for confounding factors ($b = -0.03$, $p = 0.007$, $p\text{FWER} = 0.01$). Similarly, we found that polygenic risk for schizophrenia specific to neuroinflammation gene sets revealed significant associations with retinal thinning ($b = -0.03$, self-contained $p = 0.041$ (reflecting the level of association), competitive $p = 0.05$ (reflecting the level of enrichment)). These results go beyond previous studies suggesting a relationship between manifested schizophrenia and retinal phenotypes. They indicate that the retina is a mirror reflecting the genetic complexities of schizophrenia and that alterations observed in the retina of individuals with schizophrenia may be connected to an inherent genetic predisposition to neurodegenerative aspects of the condition. These associations also suggest the potential involvement of the neuroinflammatory pathway, with indications of genetic overlap with specific retinal phenotypes. The findings further indicate that this gene pathway in individuals with a high polygenic risk for schizophrenia could contribute through acute-phase proteins to structural changes in the retina.

Introduction

The retina is a direct extension of the brain that allows for a non-invasive and real-time means of characterizing the neurovascular structure and function of the central nervous system.¹ Recent studies using optical coherence tomography found retinal thinning in individuals with schizophrenia, suggesting that illness pathophysiology may be detected in the most distal and hence readily accessible part of the central nervous system.^{2–8} These studies have shown inner retinal atrophy, thinning of peripapillary retinal nerve fiber layers and macular ganglion cell and inner plexiform layers, as well as an enlarged cup-disc ratio. This was also confirmed in a large and well-characterized cohort,⁹ where individuals with schizophrenia showed an enlargement in cup disc ratio and a decrease in inner retinal thickness compared to healthy controls, beyond what could be attributed to the presence of hypertension and diabetes.⁹

Findings such as these underscore the retina's relevance in understanding the neurobiological underpinnings of schizophrenia. However, an issue with many of these studies was the presence of potentially confounding factors such as the effects of antipsychotic medication, smoking, lifestyle factors, and disease-related changes, all which can negatively impact retinal health. Such confounders can in turn obscure the interpretation of findings, making it difficult to determine whether observed differences in retinal thickness are directly related to the pathophysiology of schizophrenia or are secondary to these confounding factors. In addition, retinal changes in these studies were associated with the disorder already being present, but the question remains whether these changes occurred before the onset of the disorder.

Intriguingly, retinal changes have been observed not only in patients but also in unaffected first-degree relatives, suggesting a link to genetic susceptibility to schizophrenia.³ Polygenic risk scores are an alternative to conventional heritability studies by allowing researchers to investigate the genetic underpinnings of retinal thickness changes in the context of schizophrenia risk, thus providing a potential understanding of the genetic contributions to these changes.¹⁰ They aggregate the impact of numerous genetic variants through-

out the genome and account for a considerable portion of the variance in disease risk.^{11,12} The identification of shared genetic influences between retinal structures and schizophrenia^{13,14} further supports the hypothesis that retinal changes observed in schizophrenia could reflect underlying genetic susceptibilities. This convergence from optical coherence tomography studies and genetic research may help exploring how genetic predispositions contribute to the neurodevelopmental and neurodegenerative anomalies in schizophrenia¹⁵, including retinal alterations.

The present study aimed to understand whether higher polygenic risk for schizophrenia in healthy individuals is reflected in thinning of the retina. We focused on the macula, the area with the highest density of neurons in the retina (Figure 1). Different subfields of the macula may have different functions and may be affected differently by various diseases or conditions^{16,17} and may therefore be more informative when investigating polygenic associations. Furthermore, we explored gene set-specific polygenic risk scores for schizophrenia: biological pathways that are related to neurotransmitter regulation, inflammation and microvasculature, all of which may be altered in individuals with schizophrenia.^{18–21} Pathway-specific analyses focused on the cumulative genetic risk within specific biological pathways, which may offer insights into the heterogeneity of the disease and its various manifestations.²² These analyses provide a more nuanced understanding of the genetic architecture of the disorder by exploring whether certain genetic pathways implicated in schizophrenia also relate to potential retinal changes. This could help elucidating the biological mechanisms underlying both the psychiatric and retinal manifestations of schizophrenia. For instance, if certain pathways are associated with both higher genetic risk for schizophrenia and specific retinal changes, this could indicate a shared biological basis that contributes to both the psychiatric symptoms and the observed ophthalmic abnormalities. In summary, we hypothesized that the thickness of the macula in individuals with a greater polygenic risk for schizophrenia would decrease while controlling for confounding factors, and that this association would be reflected in pathways relevant for schizophrenia.

Methods

Base data: schizophrenia genome-wide association study (GWAS) 2022

The summary statistics base dataset was derived from the latest available genome-wide association study for schizophrenia.¹¹ We used a file generated with the

Correspondence concerning this article should be addressed to Philipp Homan, MD, PhD, Department of Adult Psychiatry and Psychotherapy University of Zurich, Lengstrasse 31, 8032 Zurich, Switzerland. E-mail: philipp.homan@bli.uzh.ch

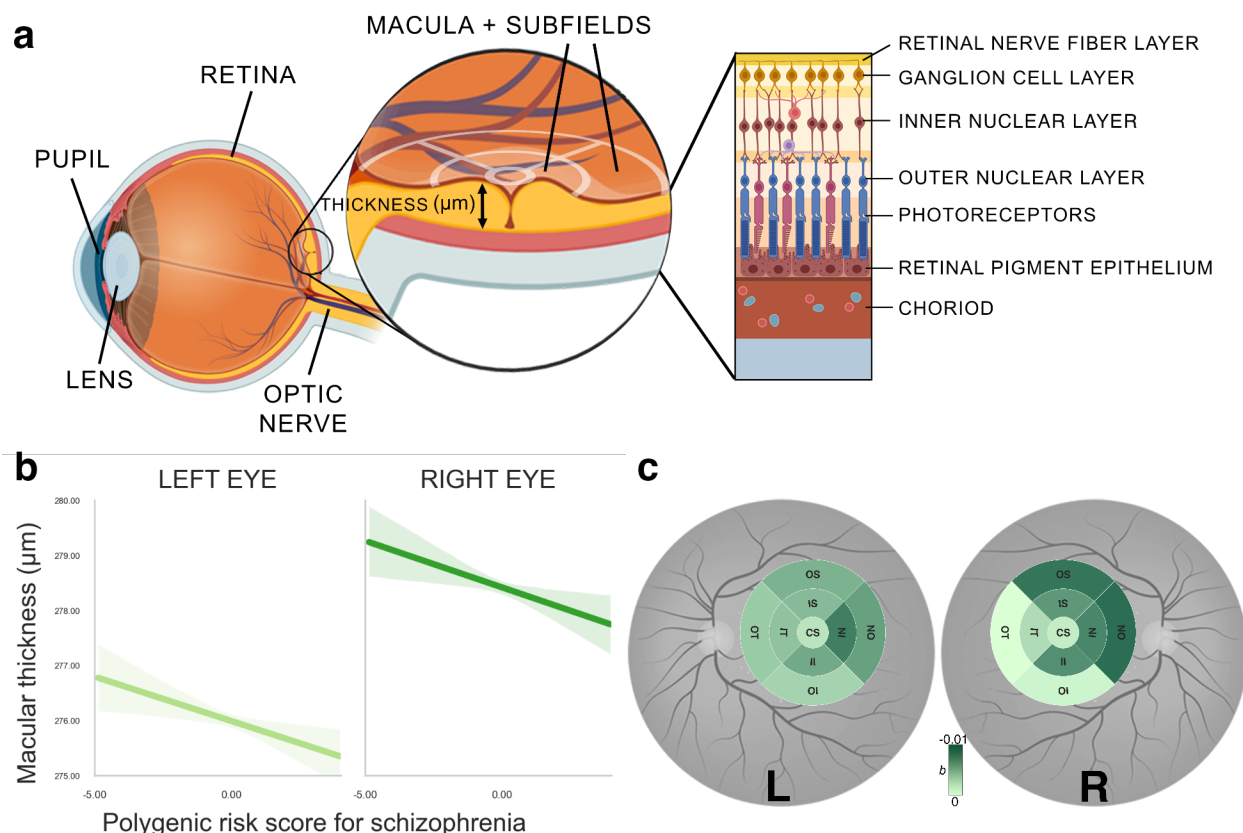


Figure 1. a. Illustration of the anatomy of the eye and retina, displayed as the cross section of the eye, and macular section of the retina. Optical coherence tomography measurements divide the macula in 9 subfields as indicated by white crosshairs. Macular thickness is measured in micrometers (μm). Structure of different retinal layers is displayed on the right. b. Association between polygenic risk score for schizophrenia and overall macular thickness in each eye respectively. Solid lines represent the regression estimates, while complementary shaded areas correspond to 95 percent confidence intervals. c. Individual macular subfields associated with polygenic risk scores for schizophrenia for both left eye (left) and right eye (right). Color coding corresponds to coefficients (b) from robust linear regression model. Higher b values correspond to greater thinning with increasing polygenic risk scores for schizophrenia. The sizes of subfields are slightly inflated for visualization purposes only. CS: Center subfield, IS: Inner Superior, OS: Outer Superior, IN: Inner Nasal, ON: Outer Nasal, II: Inner Inferior, OI: Outer Inferior, IT: Inner Temporal, OT: Outer Temporal.

exclusion of samples from the UK Biobank to assure that the base and discovery files are independent. Following quality control recommendations,¹² we assured the same genome build with the discovery data (GRCh37/hg19), retained SNPs with minor allele frequency $> 1\%$ and INFO score > 0.8 , checked for duplicate SNPs and removed ambiguous single-nucleotide polymorphisms (SNPs). The final base file included 5,899,135 SNPs.

Discovery data: UK Biobank genetic dataset

This study used data from the UK Biobank (application 102266). A full description of genotyping and imputation procedures of the UK Biobank data (<https://www.ukbiobank.ac.uk/>) is provided in the release doc-

umentation elsewhere.²³ Briefly, 487,409 blood samples were assayed using two customized tagSNP arrays (the Applied Biosystems UK BiLEVE Axiom Array and the Applied Biosystems UK Biobank Axiom Array [Affymetrix, Santa Clara, CA, USA]) with 95% shared markers, imputed to the UK10K and 1,000 Genome Project Phase 3 reference panels, with SHAPEIT²⁴ used for phasing, and IMPUTE2²⁵ used for imputation. Further data handling and QC steps were carried out according to a published processing pipeline.²⁶ To address population stratification, we retrieved ten genetic principal components from the UK Biobank. Specifically, after SNP extraction and alignment, conversion from bgen to PLINK format, removal of ambiguous SNPs (A/T, C/G; effects with allele frequencies between

0.4 and 0.6), data underwent a SNP-level QC (MAF < 0.005 and INFO score < 0.4) and sample-level QC (retaining individuals with missing rate in autosomes \leq 0.02, which were not outliers for genotype missingness or heterozygosity, not being genetically related up to third-degree relatives, not being sex-discordant and of White British or Irish ethnicity according to genetic grouping). We also excluded individuals with ICD-10 diagnosis (F20 to F29), those who were medicated with antipsychotics and had missing data in the variables of interest or covariates. In total, $n = 48208$ individuals with matched imaging-genetic data were included in the final analysis (see Figure 2 for details).

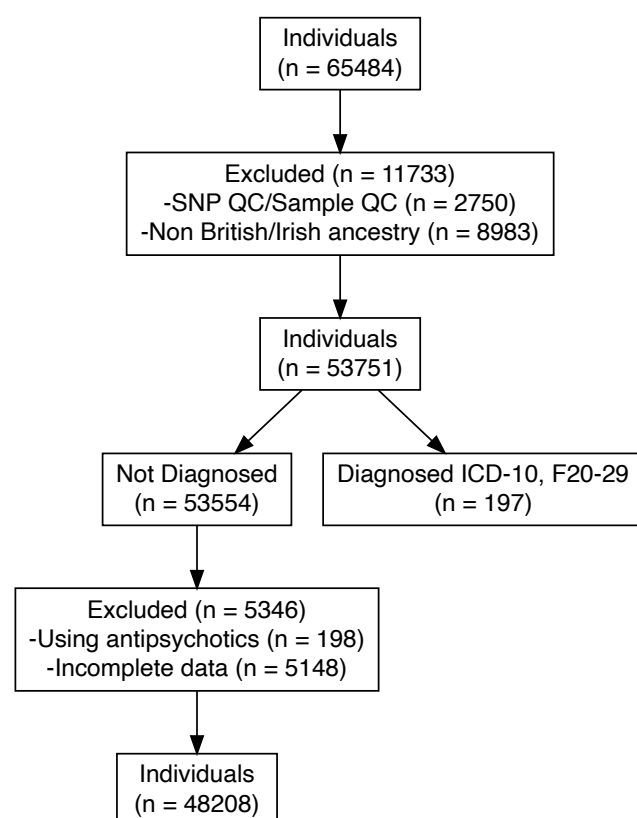


Figure 2. Diagram of inclusion and exclusion of participants in population. QC = Quality control. ICD = International Classification of Diseases. ICD-10, F20-29 categorization includes individuals with diagnosed schizophrenia, schizotypal and delusional disorders.

Polygenic risk scores calculations

In the main analysis, polygenic risk scores for schizophrenia were computed for each individual as a sum of risk alleles weighted by their estimated effect sizes²⁷ using the `-score` function in PLINK 2.0.²⁸ In addition, we generated five polygenic risk scores for

schizophrenia for each individual, employing SNPs selected based on their significance in association with the phenotype in the discovery GWAS at nominal p-value thresholds of 0.01 or less, 0.05, 0.1, 0.5, and 1.00.

Derivation of pathway-based polygenic risk scores and signaling-pathway-specific analyses

We prioritize pathways known to be associated with the disease or phenotype of interest based on previous studies.^{18–21} Pathway polygenic risk scores were calculated by including only those SNPs that were relevant to the specific pathway under investigation and are also associated with schizophrenia. Pathway polygenic risk scores for schizophrenia were computed using PRSet¹² in PRSice-2²⁷ for nine candidate gene sets selected from the Molecular Signatures Database version v2023.2 (<https://www.gsea-msigdb.org/>): acute inflammatory response (systematic name: M6557), TGF-beta signaling (M18933), chronic inflammatory response (M15140), positive regulation of dopamine receptor signaling pathway (M24111), Wnt signaling pathway involved in midbrain dopaminergic neuron differentiation (M25305), Wnt/beta-catenin pathways (M17761), neuroinflammatory response (M24927), abnormal retinal vascular morphology (M43559) and premature coronary artery atherosclerosis (M36658). For more details, see *Gene pathways from the Molecular Signatures Database (MSigDB) version 7.4 utilized in pathway-based analysis* in the Supplementary Information. A PRSet p-value threshold was set at 1 due to the limited number of SNPs in gene-set polygenic risk scores, potentially not reflecting the entirety of gene sets accurately. Both the self-contained p-value and the competitive p-value were obtained. Self-contained methods tested each gene set independently to determine if the genes within the set were associated with the phenotype of interest. This approach does not compare the gene set to the rest of the genome. The level of association reflected by self-contained methods is the degree to which the genes within the pathway are collectively associated with the phenotype, without considering genes outside the pathway.¹² Competitive methods, on the other hand, compared the level of association between genes within a pathway and the rest of the genes in the genome. This approach tested whether the genes in the pathway are more associated with the phenotype than what would be expected by chance, given the level of association observed in genes outside the pathway. Thus, this competitive method reflected signal enrichment by determining if the pathway stood out against the genomic background.¹² Both self-contained and competitive p-values were calculated

within PRSet through 10,000 permutations to generate null distribution curves for p-values. The regression models consisted of either initial PC1 or PC2 and all covariates. Human GRCh37 genome version was used as the background file.

Optical coherence tomography protocol and analysis

Optical coherence tomography images were acquired using a spectral domain optical coherence tomography device, with a raster scan protocol of 6×6mm area centered on the fovea, consisting of 128 B-scans each with 512 A-scans, completed in 3.7 seconds. Automated analysis of retinal thickness was performed using custom software developed by Topcon Advanced Biomedical Imaging Laboratory, which used dual-scale gradient information for rapid segmentation of nine intraretinal boundaries, processing the images in approximately 120 seconds each. A comprehensive account of the standardized protocol employed for optical coherence tomography acquisition and the subsequent automated analysis of retinal thickness has previously been described.²⁹ In the current study, we focused on the macula as it contains multiple layers that based on prior investigations show thinning in individuals diagnosed with schizophrenia.^{9,30,31}

Assessments of optical coherence tomography data distribution and collinearity

The normality of the distribution for each retinal phenotype was assessed by visual inspection. However, the tailedness of the distributions for each retinal phenotype data appeared to be skewed by outliers (see diagonal in Figure S3). The presence of heteroscedasticity in linear regression models was evaluated using the Breusch-Pagan test. To assess collinearity, we calculated the variance inflation factor for each macular subfield, with a value greater than five indicating moderate and greater than ten indicating excessive or serious multicollinearity (Table S3). Pearson correlation coefficients between retinal phenotypes were computed (Figure S3) and visualized as a heatmap (Figure S1).

Robust linear regression analysis for overall macular thickness and polygenic risk scores for schizophrenia

To account for potential outliers and heteroscedasticity observed in the retinal phenotype data, robust regression analysis was employed in order to examine the association between the polygenic risk scores for schizophrenia and macular phenotypes.

Robust linear regression employs M-estimation for robust linear modeling. M-estimators are a broad class of estimators in statistics that generalize maximum likelihood estimators, which are sensitive to outliers and violations of normality assumptions. The estimator used a Huber weight-function to downweight the influence of outliers and heavy-tailed distributions on the estimation of the model parameters.³² We used the MASS::rlm package in R to conduct such a robust analysis consisting of overall macular thickness as independent and polygenic risk scores for schizophrenia as dependent variables.

In this study when reporting b , we always refer to the standardized regression coefficient, which represents the estimated change in the dependent variable for a one-unit change in the independent variable.

Confounding factors

We included a comprehensive set of covariates in a multiple linear regression analysis for studying the association between polygenic risk scores for schizophrenia and macular changes. These were age and quadratic age terms, sex, the type of genotyping array used, Body Mass Index (BMI), smoking status, optical coherence tomography image quality (OCT quality), Macula centeredness, eye disorders, Townsend Deprivation Index, genotype array, and the first ten genetic principal components. The following rationale was applied for the inclusion of covariates: Age is a fundamental factor in the development of diseases, including macular changes and schizophrenia.³³ Various retinal structures are also known to degenerate with age.³⁴ The inclusion of both linear and quadratic terms for age allows the model to capture not just a linear increase or decrease in risk or severity with age, but also any acceleration or deceleration in this trend. Furthermore, biological sex can influence the risk of developing various diseases, their progression, and response to treatment,³⁵ and there is some evidence for sex differences on some retinal structural parameters.³⁶

BMI is a well-known risk factor for a wide range of health conditions, including eye diseases.³³ It can influence the development and progression of macular changes. Similarly, smoking has been linked to an increased risk of various diseases, including those affecting the eyes.³⁵

Different genotyping arrays might have varying levels of accuracy or might target different sets of genetic variations. Likewise, the quality of optical coherence tomography images and the positioning of the macula in the images can influence the ability to detect macular changes.

The Townsend Deprivation Index in UK Biobank reflects

socioeconomic status, which can influence health outcomes, including those related to ophthalmic health.³⁵ We also controlled for eye disorders and diseases known to affect the eye, including diabetic retinopathy, glaucoma, macular degeneration, injury or trauma resulting in loss of vision.

Finally, the first ten genetic principal components account for population stratification, which can confound genetic associations. Including them in our models helps to ensure that any associations found are not due to underlying population genetic differences.³³

Principal component analysis

To account for anticipated collinearity among macular subfields measures, we conducted a principal component analysis (PCA) to obtain orthogonal principal axes reflecting variations in macular subfields. Each principal axis represents a linear combination of the original macular subfields. Prior to conducting principal component analysis, we adjusted each phenotype for the confounding variables. The resultant model residuals were then standardized and used for principal component analysis. We selected the first two principal components (columns) that collectively accounted for at least 70% of the variance in the macular data.³⁷ These principal components were then used in principal component regression. To aid in the interpretation of the principal components, we displayed the direction and strength of each retinal phenotype's contribution to a specific principal axis included in the regression model. This visualization helped to understand the relationships between the retinal phenotypes and the principal components (Figure S2).

Robust principal component regression

Similarly, we also computed robust regression analyses consisting of either the first or second principal components as independent and polygenic risk scores for schizophrenia as dependent variables. We not only extended this analysis to polygenic risk scores based on the discovery GWAS at different nominal p-value thresholds, but also to pathway-specific polygenic risk scores. Regression coefficients were computed, and each regression model underwent a robust F-test to determine statistical significance using `sfsmisc::f.robftest` package. To account for multiple comparisons, adjusted p-values (pFWE) were calculated to correct for family-wise error rate (FWE).

Statistical thresholding

Statistical significance for individual analyses was defined as $p < 0.05$. The pFWE significance threshold

using Holm-Bonferroni method was set at $p\text{FWE} < 0.1$.

C-reactive protein (CRP)

The UK Biobank has meticulously recorded an array of biomarkers, with comprehensive details about their storage and analysis available at the Biobank showcase. The measurement of serum CRP levels was carried out using a high-sensitivity immunoturbidimetric method on a Beckman Coulter AU5800 analyzer. In our analysis, we applied a logarithmic transformation to the CRP levels to address their notably skewed distribution, as illustrated in Figure S4.

Partial effect analyses

In order to visualize individual phenotypes, we computed the correlation coefficients between the polygenic risk scores for schizophrenia and overall macular thickness for each eye respectively while regressing out all confounding factors.

Mediation analysis

We further sought to elucidate the mechanisms underlying the association between a pathway-enriched polygenic risk score for schizophrenia, specifically the neuroinflammatory pathway, and principal component 1. Moreover, we investigated the potential mediating role of CRP in this relationship. The rationale for examining CRP as a mediator is grounded in the evidence linking neuroinflammatory processes to the pathophysiology of schizophrenia.^{38,39} Elevated levels of CRP have been associated with increased risk and severity of schizophrenia, suggesting that inflammation may be a biological pathway through which genetic risk factors exert their effects on retinal phenotypes. To assess the mediation effect, we conducted a robust mediation analysis using two models. The mediator model was a robust linear regression that predicted CRP levels from neuroinflammatory-enriched PRS while controlling for before mentioned covariates. This model allowed us to estimate the effect of neuroinflammatory PRS on CRP (Path A). The outcome model was another robust linear regression that predicted PC1 from both neuroinflammatory PRS and CRP, controlling for the same covariates. This model provided estimates for the direct effect of neuroinflammatory PRS on PC1 (Path C) and the effect of CRP on PC1 while accounting for neuroinflammatory PRS (Path B).

The indirect effect (Path C' = Path A * Path B), representing the mediation effect of CRP, was calculated as the product of the coefficients from paths a and b. To evaluate the significance of the effect, we employed

a bootstrap method with 1000 resamples, generating empirical confidence intervals for the mediation effect. This non-parametric approach allowed us to infer the robustness of the mediation effect without relying on the assumptions of normality. The p-value associated with this effect was computed through confidence interval inversion.

Data and code availability

All data utilized in this study is publicly available at the UK Biobank (<http://www.ukbiobank.ac.uk/>).

All data analyses were performed between June 2023 and February 2024 using Python (version 3.9.12) and R (version 4.0.5). The manuscript was produced with the R packages rmarkdown (version 2.21); MASS (version 7.3.58.4); SjPlot (version 2.8.14); sfsmisc (version 1.1.16); represearch (version 0.0.0.9000; <https://github.com/phoman/represearch/>); knitr (version 1.43); and papaja (version 0.1.1). All code will be made freely available after publication to ensure reproducibility at <https://github.com/homanlab/retinlam/>.

Results

Overall reporting details

Out of the 65484 individuals recruited with available genetic and retinal data, 48208 individuals (73.60 %) were included for further analysis. Among these participants, (53.50 %) were females, and (46.50 %) were males (Table 1). We excluded 5543 individuals due to incomplete optical coherence tomography imaging for all phenotypes, the use of antipsychotics medications and a diagnosis ICD-10 (F20-F29; see Figure 2 for all details).

The overall macular thickness appeared to be significantly larger in the right eye ($M = 277.23$) compared to the left eye ($M = 274.77$; $t = 24.45$, $p < .001$).

In the analysis of the relationship between polygenic risk scores for schizophrenia and retinal phenotypes, the linear regression models displayed heteroscedasticity, as evidenced by all Breusch-Pagan tests yielding significant results ($p < 0.001$, Table ??). This indicates that the variance of the residuals was not constant across the range of values, suggesting that the precision of the regression estimates varies depending on the level of the polygenic risk scores.

Polygenic risk for schizophrenia can predict thinning of the macula

The primary dependent variable of the study was the thickness of the macula and that of its nine subfields (Figure 1a).

Table 1
Sample characteristics

Characteristic	N	Mean (SD)
Female	25781	-
Male	22427	-
Eye disorder	2099	-
Current smoker	4502	-
Previous smoker	17591	-
Non smoker	26115	-
Age	48208	57.83 (7.96)
BMI	48208	27.32 (4.71)
Townsend Index	48208	-1.33 (2.81)
Overall macular thickness (left)	48208	274.52 (25.92)
Overall macular thickness (right)	48208	277.23 (23.86)
Macular thickness at the inner inferior subfield (left)	48208	306.29 (32.58)
Macular thickness at the outer inferior subfield (left)	48208	261.73 (30.08)
Macular thickness at the inner nasal subfield (left)	48208	314.52 (32.09)
Macular thickness at the outer nasal subfield (left)	48208	286.75 (27.68)
Macular thickness at the inner superior subfield (left)	48208	307.65 (35.44)
Macular thickness at the outer superior subfield (left)	48208	264.25 (29.97)
Macular thickness at the inner temporal subfield (left)	48208	297.41 (33.39)
Macular thickness at the outer temporal subfield (left)	48208	248.72 (28.08)
Macular thickness at the central subfield (left)	48208	267.33 (35.23)
Macular thickness at the inner inferior subfield (right)	48208	308.0 (32.77)
Macular thickness at the outer inferior subfield (right)	48208	262.48 (29.35)
Macular thickness at the inner nasal subfield (right)	48208	314.16 (32.79)
Macular thickness at the outer nasal subfield (right)	48208	282.49 (27.94)
Macular thickness at the inner superior subfield (right)	48208	309.83 (34.24)
Macular thickness at the outer superior subfield (right)	48208	268.97 (29.17)
Macular thickness at the inner temporal subfield (right)	48208	300.44 (32.2)
Macular thickness at the outer temporal subfield (right)	48208	258.17 (27.64)
Macular thickness at the central subfield (right)	48208	269.56 (36.19)

We conducted robust regression analyses to examine the relationships between polygenic risk scores for schizophrenia and overall macular thickness for each eye respectively. For the left eye, we observed a negative relationship between macular thickness and polygenic risk scores for schizophrenia ($b = -0.16$, $SE = 0.06$, $p = 0.009$, $pFWER = 0.02$; Figure 1b). This means that for each one standard deviation increase in polygenic risk for schizophrenia, the thickness of the left macula decreased by 0.16 micrometers. We also found a similar negative association for the right eye ($b = -0.17$, $SE = 0.06$, $p = 0.009$, $pFWER = 0.02$; Figure 1b).

Additionally, we computed robust regression analyses for each macular subfield separately (Figure 1c). More specifically, superior and nasal subfields showed the greatest thinning in both eyes (left OS: $b = -0.01$, $p = 0.012$, $pFWER = 0.15$ right OS: $b = -0.01$, $p < .001$, $pFWER = 0.01$, left ON: $b = -0.01$, $p = 0.020$, $pFWER = 0.18$, left IN: $b = -0.01$, $p = 0.003$, $pFWER = 0.04$, right ON: $b = -0.01$, $p < .001$, $pFWER = 0.00$). In summary, these results suggest that with increasing polygenic risk for schizophrenia, the overall macula becomes thinner,

and within each eye, macular subfields seem to be thinning non-uniformly. However, testing the latter proved to be difficult due to the high collinearity between thickness measures of different macular subfields (Figure S1).

Therefore, we reduced by means of principal component analysis the dimensionality of data by transforming original retinal phenotypes into a smaller number of principal components that explain most of the variance in the data. Compared to our overall macular thickness measures, this reduction in dimensionality and regressing out of the confounding variables improves the statistical power of genetic association testing by reducing the multiple testing burden and highlighting the most relevant variation for disease risk.⁴⁰ The first two principal components explained 72 % of the data variance (Figure S2a). While principal component 1 captured a pattern of variation characterized by a general increase of thickness across macular subfields, principal component 2 captured a pattern of variation characterized by an increase of macular subfields of the left eye and a decrease of the right eye (Figure S2b). In a robust linear regression analysis, we examined the correlation coefficients for each principal component contributing to this multivariate model. We observed a negative association between the polygenic risk scores for schizophrenia and principal component 1 ($b = -0.03$, $SE = 0.01$, $p = 0.007$, $pFWER = 0.01$). This means that for each one standard deviation increase in polygenic risk for schizophrenia, the value of the first principal component tends to decrease by 0.03 standard deviations, indicating that the first principal component captures a dimension of the data that is negatively correlated with polygenic risk scores for schizophrenia. As expected, this association was consistent with individual regression results showing a negative relationship between polygenic risk scores for schizophrenia and overall macular thickness. The association between polygenic risk scores for schizophrenia and principal components 2 was not significant ($b = 0$, $SE = 0.00$, $p = 0.306$, $pFWER = 0.31$). This suggests that the specific pattern of macular thickness differences between the left and right eye as captured by the second component may not be a relevant biomarker for predicting the genetic risk for schizophrenia.

Neuroinflammatory pathway-specific polygenic risk scores are associated with macular thinning

Pathway-specific polygenic risk scores provided us with a more nuanced understanding of the genetic contribution to genetic risk manifestations. Intriguingly, we also observed that polygenic risk scores specific to neuroinflammation ($b = -0.03$, self-contained $p = 0.041$,

competitive $p = 0.051$) and Wnt signalling pathways involved in midbrain dopaminergic neuron differentiation ($b = -0.02$, self-contained $p = 0.063$, competitive $p = 0.079$) in relation to schizophrenia revealed a significant association and a trend to significance with the first principal component, respectively (Figure 3). We found no statistically significant associations with other gene pathways that potentially could be related to schizophrenia (for more details, see Table S2). Thus, genetic variation in developmental and inflammatory pathways may confer risk for schizophrenia through effects on macular thickness.

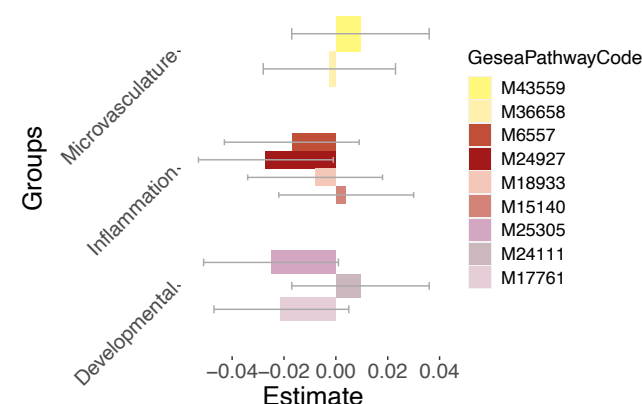


Figure 3. Association between polygenic risk for schizophrenia enriched for multiple gene pathways and first retinal principal component at p-value threshold 1. Confidence intervals (95 percent) are visualized by grey error bars. Microvasculature pathways: 1. HP abnormal retinal vascular morphology (M43559) 2. HP premature coronary artery atherosclerosis (M36658). Inflammatory pathways: 1. GOBP acute inflammatory response (M6557) 2. GOBP neuroinflammatory response (M24927) 3. Biocarta TGFB pathway (M18933) 4. GOBP chronic inflammatory response (M15140). Signaling pathways influencing neuronal development: 1. GOBP Wnt signaling pathway involved in midbrain dopaminergic neuron differentiation (M25305) 2. GOBP positive regulation of dopamine receptor signaling pathway (M24111) 3. ST Wnt beta catenin pathway (M17761).

CRP levels partially mediate the association between neuroinflammatory pathway-specific PRS and retinal thickness

The UK Biobank also provided us with CRP measurements, a protein that plays a pivotal role in managing inflammation. Therefore, we explored the mediating role of CRP in the relationship between neuroinflammatory-enriched polygenic risk scores for schizophrenia and the principal component 1 as an outcome variable (Figure 4). The mediator model revealed a significant effect of neuroinflammatory-specific polygenic risk

scores for schizophrenia on CRP (Path A coefficient = 0.01), controlling for confounding factors. This positive correlation between neuroinflammation gene enriched polygenic risk scores for schizophrenia and CRP levels suggests that individuals with a higher genetic risk for schizophrenia through neuroinflammatory-related genes also have higher systemic inflammation, as indicated by CRP levels. Furthermore, the outcome model showed a significant effect of CRP on PC1 (Path B coefficient = -0.07), after accounting for the same covariates and neuroinflammatory polygenic risk for schizophrenia. The estimated indirect effect of neuroinflammatory-specific polygenic risk for schizophrenia on PC1 through the mediator CRP was -0.001, with a 95% bootstrap confidence interval of [-0.002, -0.0003], suggesting a statistically significant partial mediation effect ($p = 0.001$). This means that part of the negative impact of neuroinflammatory-specific polygenic risk scores for schizophrenia on PC1 is mediated by increased CRP levels.

Discussion

In this large observational study, we discovered that an increased genetic predisposition to schizophrenia is associated with retinal thinning. More specifically, we observed structural abnormalities of the macula in individuals with higher polygenic risk scores for schizophrenia. Our findings also indicate potential involvement of gene variants related to neuroinflammatory pathways in the expression of retinal phenotypes.

To the best of our knowledge, this is the first study to explore the association between genetic risk for schizophrenia and retinal variations within a large population-based sample using the latest GWAS.¹¹ Moreover, our results extend prior findings of retinal thinning in patients with schizophrenia compared to healthy individuals,^{4,5,8,9,31} demonstrating an association between genetic risk for schizophrenia and these retinal phenotypes.

Our population data highlights an asymmetry of macular thickness between the left and right eyes, which has been reported before.⁴¹ However, this asymmetry did not appear to play a major role in which eye is more affected by a higher genetic risk for schizophrenia. Within each eye, the limited number of principal components did not allow us to discern differences in thinning between different macular subfields. Therefore, whether different diseases target specific anatomical structures of the retina, e.g. only ganglion cells, thus preferentially affecting subfields with a higher density of ganglion cells stronger than others is a question in need of further research. Understanding these differences has implications for using retinal imaging data as an aid to

diagnosis and patient monitoring during treatment.

Although we provided evidence of a genetic link between polygenic risk scores for schizophrenia and retinal thinning, the exact mechanisms underlying these retinal alterations remain unclear. The retina is susceptible to systemic neurodegenerative processes that also affect the brain. We therefore explored different genetic pathways that could potentially affect the retina in individuals with increasing polygenic risk for schizophrenia. Our findings suggest an association between not only neuroinflammatory pathways and retinal thickness but also Wnt signaling pathways for midbrain dopaminergic neuron differentiation. Inflammatory processes can disrupt the normal functioning of astrocytes, potentially leading to neurotransmitter dysregulation and blood-brain barrier permeability.^{42,43} Blood-brain barrier disruption, caused by pro-inflammatory cytokines and chemokines, can exacerbate neuroinflammation by allowing immune cells and potentially harmful substances to enter the brain.^{42,44} This can lead to the release of acute-phase proteins, oxidative stress, excitotoxicity, and other processes that cause neuronal damage, affecting synaptic functioning, which is critical for normal cognitive processes and has been found to be disrupted in schizophrenia.^{42,44} Acute-phase proteins like CRP can also contribute to the progressive apoptosis of photoreceptors,^{45,46} which might explain that our finding of a partial mediation effect of CRP, suggesting its mediating role next to other potential candidates, on the association between neuroinflammatory enriched polygenic risk scores for schizophrenia and macular thickness. This suggests that neuroinflammatory processes, as indexed by CRP levels, could be a key biological pathway through which genetic risk factors for schizophrenia influence macular thickness. While a previous study found no association between the levels of inflammatory markers (CRP among others) and retinal layer changes in either the schizophrenia or control group,⁴⁷ that study was considerably smaller than the present study. It is possible that such an effect can only be detected with substantially more statistical power, coming from a large sample size as in our study.

Furthermore, the interplay between neuroinflammatory and Wnt signaling pathways is critical in regulating the immune response within the CNS,^{48,49} which might explain our second pathways-specific finding. The Wnt signaling pathway is crucial for normal brain development, including the differentiation of dopaminergic neurons in the midbrain, which are implicated in the pathophysiology of schizophrenia.²¹ If the Wnt signaling pathway is altered in individuals with a higher genetic risk for schizophrenia, this could lead to devel-

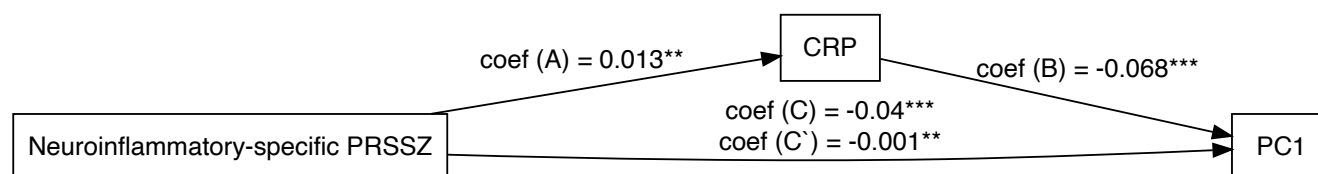


Figure 4. Mediation analysis: C-reactive protein related to associability acting as a partial mediator in the link between polygenic risk scores specific to neuroinflammation for schizophrenia and macular phenotypes represented by PC1. Coef = beta coefficient, PRSSZ = polygenic risk for schizophrenia, CRP = C-reactive protein. ** = $p < 0.01$, *** = $p < 0.001$

opmental abnormalities in the retina, a structure that shares embryological origins with the brain. Such abnormalities could manifest as changes in retinal thickness. This might explain its association with macular thinning in individuals with higher polygenic risk scores for schizophrenia in our study. However, this result warrants a cautious interpretation since the association only approached significance. Nonetheless, our findings on macular thinning could potentially reflect Wnt dysregulation which can lead to deleterious effects in neuronal development, contributing to the pathogenesis of neurodevelopmental diseases like schizophrenia.^{19,50} Other Wnt signaling pathways also play a significant role in the protection of damaged retinal neurons.⁵¹ They have been shown to have a significant impact on retinal vessel formation and maturation, as well as on the establishment of synaptic structures and neuronal function in the central nervous system.⁵¹ The activation of certain Wnt pathways has been shown to reverse the pathological phenotype caused by Wnt inhibition in the context of glaucoma.⁵² However, our other Wnt signaling pathways did not show any significant association with macular thickness changes. This could have occurred because our selection of these pathways was very limited and/or the gene sets of these pathways did not fully capture the polygenic nature of the effects.

In summary, the genetic risk factors for schizophrenia, as represented by the polygenic risk scores, may influence neuroinflammatory and Wnt signaling pathways involved in the disease. These pathways could, in turn, affect the neural and vascular integrity of the retina, leading to observable retinal changes. However, while we observed a relationship between polygenic risk scores and neural layer thinning at the macula, we did not observe any associations between retinal microvasculature gene-based polygenic risk scores for schizophrenia and retinal phenotypes. This could be due to the fact that genetic architecture of retinal microvasculature traits and schizophrenia risk is complex and again, the selected pathways were not able to capture this relationship.

Alternatively, retinal thinning in individuals with high

polygenic risk for schizophrenia may also be influenced by other factors e.g. systemic comorbidities like hypertension, metabolic dysfunction, certain health behaviors, and life-course exposures, which were not evaluated in this study. Therefore, conclusive evidence for underlying processes in schizophrenia are subject to further investigations.

Several limitations merit comment. The relatively high mean age in our study may not fully represent younger individuals with higher polygenic risk for schizophrenia. Moreover, the UK Biobank sample may not be fully representative of the UK population, and our focus on White British or Irish participants limits generalizability to other ethnicities. Additionally, the polygenic risk score's explanatory power for schizophrenia is modest, which may have limited the detection of small effects.

Our study also had several strengths, including the use of a large, population-based sample from the UK Biobank, which allowed us to avoid confounding factors related to psychotic and retinal illnesses or antipsychotic use. We also employed robust statistical analyses and complementary techniques to enhance the reliability of our results. Additionally, our extended analyses produced consistent findings across multiple inclusion thresholds for the polygenic risk score.

In conclusion, our study identified significant associations between polygenic risk scores for schizophrenia, pathway-specific scores, and retinal phenotypes, offering valuable insights into the genetic contributions to retinal changes in individuals without any diagnosis of a psychotic disorder or schizotypal personality disorder. As genome-wide association studies expand, and as the polygenic risk score for schizophrenia is updated future research may reveal more subtle associations between polygenic risk scores for schizophrenia and retinal phenotypes.

Acknowledgements

Figures 1a and 1c include graphics created with BioRender.com.

Role of the funding source

PH is supported by a NARSAD grant from the Brain & Behavior Research Foundation (28445) and by a Research Grant from the Novartis Foundation (20A058). The study design, data collection, data analysis, data interpretation, and report writing was conducted independently, without involvement from the funders.

T.L. was supported by the National Institute of Mental Health of the National Institutes of Health (NIH) under award no. R01MH117646 (T.L., principal investigator). The content is solely the responsibility of the authors and does not necessarily represent the official views of the NIH.

Competing interests

PH has received grants and honoraria from Novartis, Lundbeck, Mepha, Janssen, Boehringer Ingelheim, Neurolite outside of this work. No other disclosures were reported.

Author contributions

FR: conceptualization, methodology, statistical analysis, visualization, writing, review and editing. LK: methodology, genetic analysis, writing, review and editing. FG: conceptualization, methodology and statistical analysis. NK: conceptualization and supervision. WO: review and editing. MK: review and editing. FC: review and editing. EG: methodology, review and editing. SS: supervision, review & editing. BB: review & editing. DB: review & editing. KS: review & editing. JR: review & editing. TL: supervision, methodology, review & editing. PH: supervision, conceptualization, writing, review and editing.

References

1. London, A., Benhar, I. & Schwartz, M. The retina as a window to the brain—from eye research to CNS disorders. *Nature Reviews Neurology* **9**, 44–53 (2012).
2. Lee, W. W., Tajunisah, I., Sharmilla, K., Peyman, M. & Subrayan, V. Retinal nerve fiber layer structure abnormalities in schizophrenia and its relationship to disease state: Evidence from optical coherence tomography. *Investigative Ophthalmology & Visual Science* **54**, 7785 (2013).
3. Asanad, S. *et al.* Neuroretinal biomarkers for schizophrenia spectrum disorders. *Translational Vision Science & Technology* **10**, 29 (2021).
4. Gonzalez-Diaz, J. M. *et al.* Mapping retinal abnormalities in psychosis: Meta-analytical evidence for focal peripapillary and macular reductions. *Schizophrenia Bulletin* **48**, 1194–1205 (2022).
5. Komatsu, H. *et al.* Retinal layers and associated clinical factors in schizophrenia spectrum disorders: A systematic review and meta-analysis. *Molecular Psychiatry* **27**, 3592–3616 (2022).
6. Friedel, E. B. N. *et al.* Structural and functional retinal alterations in patients with paranoid schizophrenia. *Translational Psychiatry* **12**, (2022).
7. Boudriot, E. *et al.* Optical coherence tomography reveals retinal thinning in schizophrenia spectrum disorders. *European Archives of Psychiatry and Clinical Neuroscience* **273**, 575–588 (2022).
8. Shew, W., Zhang, D. J., Menkes, D. B. & Danesh-Meyer, H. V. Optical coherence tomography in schizophrenia spectrum disorders: A systematic review and meta-analysis. *Biological Psychiatry Global Open Science* **4**, 19–30 (2024).
9. Wagner, S. K. *et al.* Association between retinal features from multimodal imaging and schizophrenia. *JAMA Psychiatry* **80**, 478 (2023).
10. Henriksen, M. G., Nordgaard, J. & Jansson, L. B. Genetics of schizophrenia: Overview of methods, findings and limitations. *Frontiers in Human Neuroscience* **11**, (2017).
11. Trubetskoy, V. *et al.* Mapping genomic loci implicates genes and synaptic biology in schizophrenia. *Nature* **604**, 502–508 (2022).
12. Choi, S. W., Mak, T. S.-H. & O'Reilly, P. F. Tutorial: A guide to performing polygenic risk score analyses. *Nature Protocols* **15**, 2759–2772 (2020).
13. Zhao, B. *et al.* Eye-brain connections revealed by multimodal retinal and brain imaging genetics in the UK biobank. (2023) doi:10.1101/2023.02.16.23286035.
14. Lazzerini Ospri, L. *et al.* Light affects the prefrontal cortex via intrinsically photosensitive retinal ganglion cells. *Science Advances* **10**, (2024).
15. Schor, N. F. & Bianchi, D. W. Neurodevelopmental clues to neurodegeneration. *Pediatric Neurology* **123**, 67–76 (2021).

16. Bhende, M., Shetty, S., Parthasarathy, M. & Ramya, S. Optical coherence tomography: A guide to interpretation of common macular diseases. *Indian Journal of Ophthalmology* **66**, 20 (2018).
17. Lv, X. *et al.* Retinal thickness changes in different subfields reflect the volume change of cerebral white matter hyperintensity. *Frontiers in Neurology* **13**, (2022).
18. Kirkpatrick, B. & Miller, B. J. Inflammation and schizophrenia. *Schizophrenia Bulletin* **39**, 1174–1179 (2013).
19. Vallee, A. Neuroinflammation in schizophrenia: The key role of the WNT/beta-catenin pathway. *International Journal of Molecular Sciences* **23**, 2810 (2022).
20. Silverstein, S. M. *et al.* Retinal microvasculature in schizophrenia. *Eye and Brain Volume* **13**, 205–217 (2021).
21. Luvsannyam, E. *et al.* Neurobiology of schizophrenia: A comprehensive review. *Cureus* (2022) doi:10.7759/cureus.23959.
22. Touloupoulou, T. *et al.* Polygenic risk score increases schizophrenia liability through cognition-relevant pathways. *Brain* **142**, 471–485 (2018).
23. Bycroft, C. *et al.* The UK biobank resource with deep phenotyping and genomic data. *Nature* **562**, 203–209 (2018).
24. O'Connell, J. *et al.* Haplotype estimation for biobank-scale data sets. *Nature Genetics* **48**, 817–820 (2016).
25. Howie, B. N., Donnelly, P. & Marchini, J. A flexible and accurate genotype imputation method for the next generation of genome-wide association studies. *PLoS Genetics* **5**, e1000529 (2009).
26. Collister, J. A., Liu, X. & Clifton, L. Calculating polygenic risk scores (PRS) in UK biobank: A practical guide for epidemiologists. *Frontiers in Genetics* **13**, (2022).
27. Choi, S. W. & O'Reilly, P. F. PRSice-2: Polygenic risk score software for biobank-scale data. *GigaScience* **8**, (2019).
28. Chang, C. C. *et al.* Second-generation PLINK: Rising to the challenge of larger and richer datasets. *GigaScience* **4**, (2015).
29. Keane, P. A. *et al.* Optical coherence tomography in the UK biobank study – rapid automated analysis of retinal thickness for large population-based studies. *PLOS ONE* **11**, e0164095 (2016).
30. Kazakos, C. T. & Karageorgiou, V. Retinal changes in schizophrenia: A systematic review and meta-analysis based on individual participant data. *Schizophrenia Bulletin* (2019) doi:10.1093/schbul/sbz106.
31. Komatsu, H. *et al.* Retina as a potential biomarker in schizophrenia spectrum disorders: A systematic review and meta-analysis of optical coherence tomography and electroretinography. *Molecular Psychiatry* (2023) doi:10.1038/s41380-023-02340-4.
32. Huber, P. J. *Robust statistics*. (John Wiley & Sons, Inc., 1981). doi:10.1002/0471725250.
33. Wąsowska, A. *et al.* Polygenic risk score impact on susceptibility to age-related macular degeneration in polish patients. *Journal of Clinical Medicine* **12**, 295 (2022).
34. Wei, Y. *et al.* Age-related alterations in the retinal microvasculature, microcirculation, and microstructure. *Investigative Ophthalmology & Visual Science* **58**, 3804 (2017).
35. Zekavat, S. M. *et al.* Insights into human health from phenome- and genome-wide analyses of UK biobank retinal optical coherence tomography phenotypes. (2023) doi:10.1101/2023.05.16.23290063.
36. Ryoo, N.-K. *et al.* Thickness of retina and choroid in the elderly population and its association with complement factor h polymorphism: KLoSHA eye study. *PLOS ONE* **13**, e0209276 (2018).
37. Jolliffe, I. T. & Cadima, J. Principal component analysis: A review and recent developments. *Philosophical Transactions of the Royal Society A: Mathematical, Physical and Engineering Sciences* **374**, 20150202 (2016).
38. Fond, G., Lançon, C., Auquier, P. & Boyer, L. C-reactive protein as a peripheral biomarker in schizophrenia. An updated systematic review. *Frontiers in Psychiatry* **9**, (2018).
39. Prins, Bram. P. *et al.* Investigating the causal relationship of c-reactive protein with 32 complex somatic and psychiatric outcomes: A large-scale cross-consortium mendelian randomization study. *PLOS Medicine* **13**, e1001976 (2016).

40. Aschard, H. *et al.* Maximizing the power of principal-component analysis of correlated phenotypes in genome-wide association studies. *The American Journal of Human Genetics* **94**, 662–676 (2014).
41. Kafieh, R., Mahmudi, T., Rabbani, H., Mehri, A. & Akhlaghi, M.-R. Evaluation of asymmetry in right and left eyes of normal individuals using extracted features from optical coherence tomography and fundus images. *Journal of Medical Signals & Sensors* **11**, 12 (2021).
42. Pan, J. *et al.* Age-associated changes in microglia and astrocytes ameliorate blood-brain barrier dysfunction. *Molecular Therapy - Nucleic Acids* **26**, 970–986 (2021).
43. Cruz, J. V. R., Batista, C., Diniz, L. P. & Mendes, F. A. The role of astrocytes and blood–brain barrier disruption in alzheimer's disease. *Neuroglia* **4**, 209–221 (2023).
44. Gullotta, G. S., Costantino, G., Sortino, M. A. & Spampinato, S. F. Microglia and the blood–brain barrier: An external player in acute and chronic neuroinflammatory conditions. *International Journal of Molecular Sciences* **24**, 9144 (2023).
45. Kaur, G. & Singh, N. K. The role of inflammation in retinal neurodegeneration and degenerative diseases. *International Journal of Molecular Sciences* **23**, 386 (2021).
46. Noailles, A. *et al.* Persistent inflammatory state after photoreceptor loss in an animal model of retinal degeneration. *Scientific Reports* **6**, (2016).
47. Carriello, M. A. *et al.* Retinal layers and symptoms and inflammation in schizophrenia. *European Archives of Psychiatry and Clinical Neuroscience* (2023) doi:10.1007/s00406-023-01583-0.
48. Marchetti, B. & Pluchino, S. Wnt your brain be inflamed? Yes, it wnt! *Trends in Molecular Medicine* **19**, 144–156 (2013).
49. Van Steenwinckel, J. *et al.* Decreased microglial wnt/beta-catenin signalling drives microglial pro-inflammatory activation in the developing brain. *Brain* **142**, 3806–3833 (2019).
50. Zhuang, W., Ye, T., Wang, W., Song, W. & Tan, T. CTNNB1 in neurodevelopmental disorders. *Frontiers in Psychiatry* **14**, (2023).
51. Ohlmann, A., Kassumeh, S., Weber, G., Nobl, M. & Priglinger, S. The neuroprotective role of wnt signaling in the retina. *Neural Regeneration Research* **16**, 1524 (2021).
52. Dhamodaran, K., Baidouri, H., Sandoval, L. & Raghunathan, V. Wnt activation after inhibition restores trabecular meshwork cells toward a normal phenotype. *Investigative Ophthalmology & Visual Science* **61**, 30 (2020).

Supplementary Information

Supplementary Results

Gene pathways from the Molecular Signatures Database (MSigDB) version 7.4 utilized in pathway-based analysis. **GOBP_NEUROINFLAMMATORY_RESPONSE** > Neuroinflammatory response is the nervous system's reaction to various forms of damage, including infection, traumatic brain injury, toxic metabolites, or autoimmunity. [ADCY1 ADCY8 ADORA2A AGER AIF1 APP ATM AZU1 BPGM C1QA C5AR1 CCL3 CD200 CD200R1 CD200R1L CLU CNTF CST7 CTSC CX3CL1 CX3CR1 DAGLA GNAT2 GRN IFNG IFNGR1 IFNGR2 IGF1 IL13 IL18 IL1B IL33 IL4 IL6 ITGAM ITGB1 ITGB2 JAK2 KCNJ8 LARGE1 LDLR LRP1 LRRK2 MAPT MIR128-1 MIR142 MIR181B1 MIR181C MIR195 MIR206 MIR26A1 MMP3 MMP8 MMP9 NAGLU NR1D1 NR3C1 NUPR1 PLCG2 POMGNT1 POMT2 PSEN1 PTGS2 PTPRC SMO SNCA SPHK1 STAP1 SYT11 TFAF3 TLR2 TLR3 TLR6 TLR9 TNF TNFRSF1B TREM2 TRPV1 TTBK1 TYROBP VPS54 ZEB2]

GOBP_CHRONIC_INFLAMMATORY_RESPONSE > This identifier is related to the chronic inflammatory response. A chronic inflammatory response is a prolonged inflammatory reaction that can lead to tissue damage and is involved in various diseases. [ADORA2B CCL5 CXCL13 CYP19A1 FOXP3 IDO1 IL10 IL4 LTA NFKBIZ S100A8 S100A9 SCN11A THBS1 TNF TNFAIP3 UNC13D VCAM1 VNN1]

BIOCARTA_TGFB_PATHWAY > The TGF beta signaling pathway is a cellular mechanism that regulates various biological processes, including cell growth, differentiation, and apoptosis, and it plays a dual role in inflammation by both promoting and inhibiting inflammatory responses depending on the context [APC CDH1 CREBBP EP300 MAP2K1 MAP3K7 MAPK3 SKI1 SMAD2 SMAD3 SMAD4 SMAD7 TAB1 TGFB1 TGFB2 TGFB3 TGFB4 TGFB5 TGFB6 TGFB7 TGFB8 TGFB9 TGFB10 TGFB11 TGFB12 TGFB13 TGFB14 TGFB15 TGFB16 TGFB17 TGFB18 TGFB19 TGFB20 TGFB21 TGFB22 TGFB23 TGFB24 TGFB25 TGFB26 TGFB27 TGFB28 TGFB29 TGFB30 TGFB31 TGFB32 TGFB33 TGFB34 TGFB35 TGFB36 TGFB37 TGFB38 TGFB39 TGFB40 TGFB41 TGFB42 TGFB43 TGFB44 TGFB45 TGFB46 TGFB47 TGFB48 TGFB49 TGFB50 TGFB51 TGFB52 TGFB53 TGFB54 TGFB55 TGFB56 TGFB57 TGFB58 TGFB59 TGFB60 TGFB61 TGFB62 TGFB63 TGFB64 TGFB65 TGFB66 TGFB67 TGFB68 TGFB69 TGFB70 TGFB71 TGFB72 TGFB73 TGFB74 TGFB75 TGFB76 TGFB77 TGFB78 TGFB79 TGFB80 TGFB81 TGFB82 TGFB83 TGFB84 TGFB85 TGFB86 TGFB87 TGFB88 TGFB89 TGFB90 TGFB91 TGFB92 TGFB93 TGFB94 TGFB95 TGFB96 TGFB97 TGFB98 TGFB99 TGFB100 TGFB101 TGFB102 TGFB103 TGFB104 TGFB105 TGFB106 TGFB107 TGFB108 TGFB109 TGFB110 TGFB111 TGFB112 TGFB113 TGFB114 TGFB115 TGFB116 TGFB117 TGFB118 TGFB119 TGFB120 TGFB121 TGFB122 TGFB123 TGFB124 TGFB125 TGFB126 TGFB127 TGFB128 TGFB129 TGFB130 TGFB131 TGFB132 TGFB133 TGFB134 TGFB135 TGFB136 TGFB137 TGFB138 TGFB139 TGFB140 TGFB141 TGFB142 TGFB143 TGFB144 TGFB145 TGFB146 TGFB147 TGFB148 TGFB149 TGFB150 TGFB151 TGFB152 TGFB153 TGFB154 TGFB155 TGFB156 TGFB157 TGFB158 TGFB159 TGFB160 TGFB161 TGFB162 TGFB163 TGFB164 TGFB165 TGFB166 TGFB167 TGFB168 TGFB169 TGFB170 TGFB171 TGFB172 TGFB173 TGFB174 TGFB175 TGFB176 TGFB177 TGFB178 TGFB179 TGFB180 TGFB181 TGFB182 TGFB183 TGFB184 TGFB185 TGFB186 TGFB187 TGFB188 TGFB189 TGFB190 TGFB191 TGFB192 TGFB193 TGFB194 TGFB195 TGFB196 TGFB197 TGFB198 TGFB199 TGFB200 TGFB201 TGFB202 TGFB203 TGFB204 TGFB205 TGFB206 TGFB207 TGFB208 TGFB209 TGFB210 TGFB211 TGFB212 TGFB213 TGFB214 TGFB215 TGFB216 TGFB217 TGFB218 TGFB219 TGFB220 TGFB221 TGFB222 TGFB223 TGFB224 TGFB225 TGFB226 TGFB227 TGFB228 TGFB229 TGFB230 TGFB231 TGFB232 TGFB233 TGFB234 TGFB235 TGFB236 TGFB237 TGFB238 TGFB239 TGFB240 TGFB241 TGFB242 TGFB243 TGFB244 TGFB245 TGFB246 TGFB247 TGFB248 TGFB249 TGFB250 TGFB251 TGFB252 TGFB253 TGFB254 TGFB255 TGFB256 TGFB257 TGFB258 TGFB259 TGFB260 TGFB261 TGFB262 TGFB263 TGFB264 TGFB265 TGFB266 TGFB267 TGFB268 TGFB269 TGFB270 TGFB271 TGFB272 TGFB273 TGFB274 TGFB275 TGFB276 TGFB277 TGFB278 TGFB279 TGFB280 TGFB281 TGFB282 TGFB283 TGFB284 TGFB285 TGFB286 TGFB287 TGFB288 TGFB289 TGFB290 TGFB291 TGFB292 TGFB293 TGFB294 TGFB295 TGFB296 TGFB297 TGFB298 TGFB299 TGFB300 TGFB301 TGFB302 TGFB303 TGFB304 TGFB305 TGFB306 TGFB307 TGFB308 TGFB309 TGFB310 TGFB311 TGFB312 TGFB313 TGFB314 TGFB315 TGFB316 TGFB317 TGFB318 TGFB319 TGFB320 TGFB321 TGFB322 TGFB323 TGFB324 TGFB325 TGFB326 TGFB327 TGFB328 TGFB329 TGFB330 TGFB331 TGFB332 TGFB333 TGFB334 TGFB335 TGFB336 TGFB337 TGFB338 TGFB339 TGFB340 TGFB341 TGFB342 TGFB343 TGFB344 TGFB345 TGFB346 TGFB347 TGFB348 TGFB349 TGFB350 TGFB351 TGFB352 TGFB353 TGFB354 TGFB355 TGFB356 TGFB357 TGFB358 TGFB359 TGFB360 TGFB361 TGFB362 TGFB363 TGFB364 TGFB365 TGFB366 TGFB367 TGFB368 TGFB369 TGFB370 TGFB371 TGFB372 TGFB373 TGFB374 TGFB375 TGFB376 TGFB377 TGFB378 TGFB379 TGFB380 TGFB381 TGFB382 TGFB383 TGFB384 TGFB385 TGFB386 TGFB387 TGFB388 TGFB389 TGFB390 TGFB391 TGFB392 TGFB393 TGFB394 TGFB395 TGFB396 TGFB397 TGFB398 TGFB399 TGFB400 TGFB401 TGFB402 TGFB403 TGFB404 TGFB405 TGFB406 TGFB407 TGFB408 TGFB409 TGFB410 TGFB411 TGFB412 TGFB413 TGFB414 TGFB415 TGFB416 TGFB417 TGFB418 TGFB419 TGFB420 TGFB421 TGFB422 TGFB423 TGFB424 TGFB425 TGFB426 TGFB427 TGFB428 TGFB429 TGFB430 TGFB431 TGFB432 TGFB433 TGFB434 TGFB435 TGFB436 TGFB437 TGFB438 TGFB439 TGFB440 TGFB441 TGFB442 TGFB443 TGFB444 TGFB445 TGFB446 TGFB447 TGFB448 TGFB449 TGFB450 TGFB451 TGFB452 TGFB453 TGFB454 TGFB455 TGFB456 TGFB457 TGFB458 TGFB459 TGFB460 TGFB461 TGFB462 TGFB463 TGFB464 TGFB465 TGFB466 TGFB467 TGFB468 TGFB469 TGFB470 TGFB471 TGFB472 TGFB473 TGFB474 TGFB475 TGFB476 TGFB477 TGFB478 TGFB479 TGFB480 TGFB481 TGFB482 TGFB483 TGFB484 TGFB485 TGFB486 TGFB487 TGFB488 TGFB489 TGFB490 TGFB491 TGFB492 TGFB493 TGFB494 TGFB495 TGFB496 TGFB497 TGFB498 TGFB499 TGFB500 TGFB501 TGFB502 TGFB503 TGFB504 TGFB505 TGFB506 TGFB507 TGFB508 TGFB509 TGFB510 TGFB511 TGFB512 TGFB513 TGFB514 TGFB515 TGFB516 TGFB517 TGFB518 TGFB519 TGFB520 TGFB521 TGFB522 TGFB523 TGFB524 TGFB525 TGFB526 TGFB527 TGFB528 TGFB529 TGFB530 TGFB531 TGFB532 TGFB533 TGFB534 TGFB535 TGFB536 TGFB537 TGFB538 TGFB539 TGFB540 TGFB541 TGFB542 TGFB543 TGFB544 TGFB545 TGFB546 TGFB547 TGFB548 TGFB549 TGFB550 TGFB551 TGFB552 TGFB553 TGFB554 TGFB555 TGFB556 TGFB557 TGFB558 TGFB559 TGFB560 TGFB561 TGFB562 TGFB563 TGFB564 TGFB565 TGFB566 TGFB567 TGFB568 TGFB569 TGFB570 TGFB571 TGFB572 TGFB573 TGFB574 TGFB575 TGFB576 TGFB577 TGFB578 TGFB579 TGFB580 TGFB581 TGFB582 TGFB583 TGFB584 TGFB585 TGFB586 TGFB587 TGFB588 TGFB589 TGFB590 TGFB591 TGFB592 TGFB593 TGFB594 TGFB595 TGFB596 TGFB597 TGFB598 TGFB599 TGFB600 TGFB601 TGFB602 TGFB603 TGFB604 TGFB605 TGFB606 TGFB607 TGFB608 TGFB609 TGFB610 TGFB611 TGFB612 TGFB613 TGFB614 TGFB615 TGFB616 TGFB617 TGFB618 TGFB619 TGFB620 TGFB621 TGFB622 TGFB623 TGFB624 TGFB625 TGFB626 TGFB627 TGFB628 TGFB629 TGFB630 TGFB631 TGFB632 TGFB633 TGFB634 TGFB635 TGFB636 TGFB637 TGFB638 TGFB639 TGFB640 TGFB641 TGFB642 TGFB643 TGFB644 TGFB645 TGFB646 TGFB647 TGFB648 TGFB649 TGFB650 TGFB651 TGFB652 TGFB653 TGFB654 TGFB655 TGFB656 TGFB657 TGFB658 TGFB659 TGFB660 TGFB661 TGFB662 TGFB663 TGFB664 TGFB665 TGFB666 TGFB667 TGFB668 TGFB669 TGFB670 TGFB671 TGFB672 TGFB673 TGFB674 TGFB675 TGFB676 TGFB677 TGFB678 TGFB679 TGFB680 TGFB681 TGFB682 TGFB683 TGFB684 TGFB685 TGFB686 TGFB687 TGFB688 TGFB689 TGFB690 TGFB691 TGFB692 TGFB693 TGFB694 TGFB695 TGFB696 TGFB697 TGFB698 TGFB699 TGFB700 TGFB701 TGFB702 TGFB703 TGFB704 TGFB705 TGFB706 TGFB707 TGFB708 TGFB709 TGFB710 TGFB711 TGFB712 TGFB713 TGFB714 TGFB715 TGFB716 TGFB717 TGFB718 TGFB719 TGFB720 TGFB721 TGFB722 TGFB723 TGFB724 TGFB725 TGFB726 TGFB727 TGFB728 TGFB729 TGFB730 TGFB731 TGFB732 TGFB733 TGFB734 TGFB735 TGFB736 TGFB737 TGFB738 TGFB739 TGFB740 TGFB741 TGFB742 TGFB743 TGFB744 TGFB745 TGFB746 TGFB747 TGFB748 TGFB749 TGFB750 TGFB751 TGFB752 TGFB753 TGFB754 TGFB755 TGFB756 TGFB757 TGFB758 TGFB759 TGFB760 TGFB761 TGFB762 TGFB763 TGFB764 TGFB765 TGFB766 TGFB767 TGFB768 TGFB769 TGFB770 TGFB771 TGFB772 TGFB773 TGFB774 TGFB775 TGFB776 TGFB777 TGFB778 TGFB779 TGFB780 TGFB781 TGFB782 TGFB783 TGFB784 TGFB785 TGFB786 TGFB787 TGFB788 TGFB789 TGFB790 TGFB791 TGFB792 TGFB793 TGFB794 TGFB795 TGFB796 TGFB797 TGFB798 TGFB799 TGFB800 TGFB801 TGFB802 TGFB803 TGFB804 TGFB805 TGFB806 TGFB807 TGFB808 TGFB809 TGFB810 TGFB811 TGFB812 TGFB813 TGFB814 TGFB815 TGFB816 TGFB817 TGFB818 TGFB819 TGFB820 TGFB821 TGFB822 TGFB823 TGFB824 TGFB825 TGFB826 TGFB827 TGFB828 TGFB829 TGFB830 TGFB831 TGFB832 TGFB833 TGFB834 TGFB835 TGFB836 TGFB837 TGFB838 TGFB839 TGFB840 TGFB841 TGFB842 TGFB843 TGFB844 TGFB845 TGFB846 TGFB847 TGFB848 TGFB849 TGFB850 TGFB851 TGFB852 TGFB853 TGFB854 TGFB855 TGFB856 TGFB857 TGFB858 TGFB859 TGFB860 TGFB861 TGFB862 TGFB863 TGFB864 TGFB865 TGFB866 TGFB867 TGFB868 TGFB869 TGFB870 TGFB871 TGFB872 TGFB873 TGFB874 TGFB875 TGFB876 TGFB877 TGFB878 TGFB879 TGFB880 TGFB881 TGFB882 TGFB883 TGFB884 TGFB885 TGFB886 TGFB887 TGFB888 TGFB889 TGFB890 TGFB891 TGFB892 TGFB893 TGFB894 TGFB895 TGFB896 TGFB897 TGFB898 TGFB899 TGFB900 TGFB901 TGFB902 TGFB903 TGFB904 TGFB905 TGFB906 TGFB907 TGFB908 TGFB909 TGFB910 TGFB911 TGFB912 TGFB913 TGFB914 TGFB915 TGFB916 TGFB917 TGFB918 TGFB919 TGFB920 TGFB921 TGFB922 TGFB923 TGFB924 TGFB925 TGFB926 TGFB927 TGFB928 TGFB929 TGFB930 TGFB931 TGFB932 TGFB933 TGFB934 TGFB935 TGFB936 TGFB937 TGFB938 TGFB939 TGFB940 TGFB941 TGFB942 TGFB943 TGFB944 TGFB945 TGFB946 TGFB947 TGFB948 TGFB949 TGFB950 TGFB951 TGFB952 TGFB953 TGFB954 TGFB955 TGFB956 TGFB957 TGFB958 TGFB959 TGFB960 TGFB961 TGFB962 TGFB963 TGFB964 TGFB965 TGFB966 TGFB967 TGFB968 TGFB969 TGFB970 TGFB971 TGFB972 TGFB973 TGFB974 TGFB975 TGFB976 TGFB977 TGFB978 TGFB979 TGFB980 TGFB981 TGFB982 TGFB983 TGFB984 TGFB985 TGFB986 TGFB987 TGFB988 TGFB989 TGFB990 TGFB991 TGFB992 TGFB993 TGFB994 TGFB995 TGFB996 TGFB997 TGFB998 TGFB999 TGFB1000 TGFB1001 TGFB1002 TGFB1003 TGFB1004 TGFB1005 TGFB1006 TGFB1007 TGFB1008 TGFB1009 TGFB1010 TGFB1011 TGFB1012 TGFB1013 TGFB1014 TGFB1015 TGFB1016 TGFB1017 TGFB1018 TGFB1019 TGFB1020 TGFB1021 TGFB1022 TGFB1023 TGFB1024 TGFB1025 TGFB1026 TGFB1027 TGFB1028 TGFB1029 TGFB1030 TGFB1031 TGFB1032 TGFB1033 TGFB1034 TGFB1035 TGFB1036 TGFB1037 TGFB1038 TGFB1039 TGFB1040 TGFB1041 TGFB1042 TGFB1043 TGFB1044 TGFB1045 TGFB1046 TGFB1047 TGFB1048 TGFB1049 TGFB1050 TGFB1051 TGFB1052 TGFB1053 TGFB1054 TGFB1055 TGFB1056 TGFB1057 TGFB1058 TGFB1059 TGFB1060 TGFB1061 TGFB1062 TGFB1063 TGFB1064 TGFB1065 TGFB1066 TGFB1067 TGFB1068 TGFB1069 TGFB1070 TGFB1071 TGFB1072 TGFB1073 TGFB1074 TGFB1075 TGFB1076 TGFB1077 TGFB1078 TGFB1079 TGFB1080 TGFB1081 TGFB1082 TGFB1083 TGFB1084 TGFB1085 TGFB1086 TGFB1087 TGFB1088 TGFB1089 TGFB1090 TGFB1091 TGFB1092 TGFB1093 TGFB1094 TGFB1095 TGFB1096 TGFB1097 TGFB1098 TGFB1099 TGFB1100 TGFB1101 TGFB1102 TGFB1103 TGFB1104 TGFB1105 TGFB1106 TGFB1107 TGFB1108 TGFB1109 TGFB1110 TGFB1111 TGFB1112 TGFB1113 TGFB1114 TGFB1115 TGFB1116 TGFB1117 TGFB1118 TGFB1119 TGFB1120 TGFB1121 TGFB1122 TGFB1123 TGFB1124 TGFB1125 TGFB1126 TGFB1127 TGFB1128 TGFB1129 TGFB1130 TGFB1131 TGFB1132 TGFB1133 TGFB1134 TGFB1135 TGFB1136 TGFB1137 TGFB1138 TGFB1139 TGFB1140 TGFB1141 TGFB1142 TGFB1143 TGFB1144 TGFB1145 TGFB1146 TGFB1147 TGFB1148 TGFB1149 TGFB1150 TGFB1151 TGFB1152 TGFB1153 TGFB1154 TGFB1155 TGFB1156 TGFB1157 TGFB1158 TGFB1159 TGFB1160 TGFB1161 TGFB1162 TGFB1163 TGFB1164 TGFB1165 TGFB1166 TGFB1167 TGFB1168 TGFB1169 TGFB1170 TGFB1171 TGFB1172 TGFB1173 TGFB1174 TGFB1175 TGFB1176 TGFB1177 TGFB1178 TGFB1179 TGFB1180 TGFB1181 TGFB1182 TGFB1183 TGFB1184 TGFB1185 TGFB1186 TGFB1187 TGFB1188 TGFB1189 TGFB1190 TGFB1191 TGFB1192 TGFB1193 TGFB1194 TGFB1195 TGFB1196 TGFB1197 TGFB1198 TGFB1199 TGFB1200 TGFB1201 TGFB1202 TGFB1203 TGFB1204 TGFB1205 TGFB1206 TGFB1207 TGFB1208 TGFB1209 TGFB1210 TGFB1211 TGFB1212 TGFB1213 TGFB1214 TGFB1215 TGFB1216 TGFB1217 TGFB1218 TGFB1219 TGFB1220 TGFB1221 TGFB1222 TGFB1223 TGFB1224 TGFB1225 TGFB1226 TGFB1227 TGFB1228 TGFB1229 TGFB1230 TGFB1231 TGFB1232 TGFB1233 TGFB1234 TGFB1235 TGFB1236 TGFB1237 TGFB1238 TGFB1239 TGFB1240 TGFB1241 TGFB1242 TGFB1243 TGFB1244 TGFB1245 TGFB1246 TGFB1247 TGFB1248 TGFB1249 TGFB1250 TGFB1251 TGFB1252 TGFB1253 TGFB1254 TGFB1255 TGFB1256 TGFB1257 TGFB1258 TGFB1259 TGFB1260 TGFB1261 TGFB1262 TGFB1263 TGFB1264 TGFB1265 TGFB1266 TGFB1267 TGFB1268 TGFB1269 TGFB1270 TGFB1271 TGFB1272 TGFB1273 TGFB1274 TGFB1275 TGFB1276 TGFB1277 TGFB1278 TGFB1279 TGFB1280 TGFB1281 TGFB1282 TGFB1283 TGFB1284 TGFB1285 TGFB1286 TGFB1287 TGFB1288 TGFB1289 TGFB1290 TGFB1291 TGFB1292 TGFB1293 TGFB1294 TGFB1295 TGFB1296 TGFB1297 TGFB1298 TGFB1299 TGFB1300 TGFB1301 TGFB1302 TGFB1303 TGFB1304 TGFB1305 TGFB1306 TGFB1307 TGFB1308 TGFB1309 TGFB1310 TGFB1311 TGFB1312 TGFB1313 TGFB1314 TGFB1315 TGFB1316 TGFB1317 TGFB1318 TGFB1319 TGFB1320 TGFB1321 TGFB1322 TGFB1323 TGFB1324 TGFB1325 TGFB1326 TGFB1327 TGFB1328 TGFB1329 TGFB1330 TGFB1331 TGFB1332 TGFB1333 TGFB1334 TGFB1335 TGFB1336 TGFB1337 TGFB1338 TGFB1339 TGFB1340 TGFB1341 TGFB1342 TGFB1343 TGFB1344 TGFB1345 TGFB1346 TGFB1347 TGFB1348 TGFB1349 TGFB1350 TGFB1351 TGFB1352 TGFB1353 TGFB1354 TGFB1355 TGFB1356 TGFB1357 TGFB1358 TGFB1359 TGFB1360 TGFB1361 TGFB1362 TGFB1363 TGFB1364 TGFB1365 TGFB1366 TGFB1367 TGFB1368 TGFB1369 TGFB1370 TGFB1371 TGFB1372 TGFB1373 TGFB1374 TGFB1375 TGFB1376 TGFB1377 TGFB1378 TGFB1379 TGFB1380 TGFB1381 TGFB1382 TGFB1383 TGFB1384 TGFB1385 TGFB1386 TGFB1387 TGFB1388 TGFB1389 TGFB1390 TGFB1391 TGFB1392 TGFB1393 TGFB1394 TGFB1395 TGFB1396 TGFB1397 TGFB1398 TGFB1399 TGFB1400 TGFB1401 TGFB1402 TGFB1403 TGFB1404 TGFB1405 TGFB1406 TGFB1407 TGFB1408 TGFB1409 TGFB1410 TGFB1411 TGFB1412 TGFB1413 TGFB1414 TGFB1415 TGFB1416 TGFB1417 TGFB1418 TGFB1419 TGFB1420 TGFB1421 TGFB1422 TGFB1423 TGFB1424 TGFB1425 TGFB1426 TGFB1427 TGFB1428 TGFB1429 TGFB1430 TGFB1431 TGFB1432 TGFB1433 TGFB1434 TGFB1435 TGFB1436 TGFB1437 TGFB1438 TGFB1439 TGFB1440 TGFB1441 TGFB1442 TGFB1443 TGFB1444 TGFB1445 TGFB1446 TGFB1447 TGFB1448 TGFB1449 TGFB1450 TGFB1451 TGFB1452 TGFB1453 TGFB1454 TGFB1455 TGFB1456 TGFB1457 TGFB1458 TGFB1459 TGFB1460 TGFB1461 TGFB1462 TGFB1463 TGFB1464 TGFB1465 TGFB1466 TGFB1467 TGFB1468 TGFB1469 TGFB1470 TGFB1471 TGFB1472 TGFB1473 TGFB1474 TGFB1475 TGFB1476 TGFB1477 TGFB1478 TGFB1479 TGFB1480 TGFB1481 TGFB1482 TGFB1483 TGFB1484 TGFB1485 TGFB1486 TGFB1487 TGFB1488 TGFB1489 TGFB1490 TGFB1491 TGFB1492 TGFB1493 TGFB1494 TGFB1495 TGFB1496 TGFB1497 TGFB1498 TGFB1499 TGFB1500 TGFB1501 TGFB1502 TGFB1503 TGFB1504 TGFB1505 TGFB1506 TGFB1507 TGFB1508 TGFB1509 TGFB1510 TGFB1511 TGFB1512 TGFB1513 TGFB1514 TGFB1515 TGFB1516 TGFB1517 TGFB1518 TGFB1519 TGFB1520 TGFB1521 TGFB1522 TGFB1523 TGFB1524 TGFB1525 TGFB1526 TGFB1527 TGFB1528 TGFB1529 TGFB1530 TGFB1531 TGFB1532 TGFB1533 TGFB1534 TGFB1535 TGFB1536 TGFB1537 TGFB1538 TGFB1539 TGFB1540 TGFB1541 TGFB1542 TGFB1543 TGFB1544 TGFB1545 TGFB1546 TGFB1547 TGFB1548 TGFB1549 TGFB1550 TGFB1551 TGFB1552 TGFB1553 TGFB1554 TGFB1555 TGFB1556 TGFB1557 TGFB1558 TGFB1559 TGFB1560 TGFB1561 TGFB1562 TGFB1563 TGFB1564 TGFB1565 TGFB1566 TGFB1567 TGFB1568 TGFB1569 TGFB1570 TGFB1571 TGFB1572 TGFB1573 TGFB1574 TGFB1575 TGFB1576 TGFB1577 TGFB1578 TGFB1579 TGFB1580 TGFB1581 TGFB1582 TGFB1583 TGFB1584 TGFB1585 TGFB1586 TGFB1587 TGFB1588 TGFB1589 TGFB1590 TGFB1591 TGFB1592 TGFB1593 TGFB1594 TGFB1595 TGFB1596 TGFB1597 TGFB1598 TGFB1599 TGFB1600 TGFB1601 TGFB1602 TGFB1603 TGFB1604 TGFB1605 TGFB1606 TGFB1607 TGFB1608 TGFB1609 TGFB1610 TGFB1611 TGFB1612 TGFB1613 TGFB1614 TGFB1615 TGFB1616 TGFB1617 TGFB1618 TGFB1619 TGFB1620 TGFB1621 TGFB1622 TGFB1623 TGFB1624 TGFB1625 TGFB1626 TGFB1627 TGFB1628 TGFB1629 TGFB1630 TGFB1631 TGFB1632 TGFB1633 TGFB1634 TGFB1635 TGFB1636 TGFB1637 TGFB1638 TGFB1639 TGFB1640 TGFB1641 TGFB1642 TGFB1643 TGFB1644 TGFB1645 TGFB1646 TGFB1647 TGFB1648 TGFB1649 TGFB1650 TGFB1651 TGFB1652 TGFB1653 TGFB1654 TGFB1655 TGFB1656 TGFB1657 TGFB1658 TGFB1659 TGFB1660 TGFB1661 TGFB1662 TGFB1663 TGFB1664 TGFB1665 TGFB1666 TGFB1667 TGFB1668 TGFB1669 TGFB1670 TGFB1671 TGFB1672 TGFB1673 TGFB1674 TGFB1675 TGFB1676 TGFB1677 TGFB1678 TGFB1679 TGFB1680 TGFB1681 TGFB1682 TGFB1683 TGFB1684 TGFB1685 TGFB1686 TGFB1687 TGFB1688 TGFB1689 TGFB1690 TGFB1691 TGFB1692 TGFB1693 TGFB1694 TGFB1695 TGFB1696 TGFB1697 TGFB1698 TGFB1699 TGFB1700 TGFB1701 TGFB1702 TGFB1703 TGFB1704 TGFB1705 TGFB1706 TGFB1707 TGFB1708 TGFB1709 TGFB1710 TGFB1711 TGFB1712 TGFB1713 TGFB1714 TGFB1715 TGFB1716 TGFB1717 TGFB1718 TGFB1719 TGFB1720 TGFB1721 TGFB1722 TGFB1723 TGFB1724 TGFB1725 TGFB1726 TGFB1727 TGFB1728 TGFB1729 TGFB1730 TGFB1731 TGFB1732 TGFB1733 TGFB1734 TGFB1735 TGFB1736 TGFB1737 TGFB1738 TGFB1739 TGFB1740 TGFB1741 TGFB1742 TGFB1743 TGFB1744 TGFB1745 TGFB1746 TGFB1747 TGFB1748 TGFB1749 TGFB1750 TGFB1751 TGFB1752 TGFB1753 TGFB1754 TGFB1755 TGFB1756 TGFB1757 TGFB1758 TGFB1759 TGFB1760 TGFB1761 TGFB1762 TGFB1763 TGFB1764 TGFB1765 TGFB1766 TGFB1767 TGFB1768 TGFB1769 TGFB1770 TGFB1771 TGFB1772 TGFB1773 TGFB1774 TGFB1775 TGFB1776 TGFB1777 TGFB1778 TGFB1779 TGFB1780 TGFB1781 TGFB1782 TGFB1783 TGFB1784 TGFB1785 TGFB1786 TGFB1787 TGFB1788 TGFB1789 TGFB1790 TGFB1791 TGFB1792 TGFB1793 TGFB1794 TGFB1795 TGFB1796 TGFB1797 TGFB1798 TGFB1799 TGFB1800 TGFB1801 TGFB1802 TGFB1803 TGFB1804 TGFB1805 TGFB1806 TGFB1807 TGFB1808 TGFB1809 TGFB1810 TGFB1811 TGFB1812 TGFB1813 TGFB1814 TGFB1815 TGFB1816 TGFB1817 TGFB1818 TGFB1819 TGFB1820 TGFB1821 TGFB1822 TGFB1823 TGFB1824 TGFB1825 TGFB1826 TGFB1827 TGFB1828 TGFB1829 TGFB1830 TGFB1831 TGFB1832 TGFB1833 TGFB1834 TGFB1835 TGFB1836 TGFB1837 TGFB1838 TGFB1839 TGFB1840 TGFB1841 TGFB1842 TGFB1843 TGFB1844 TGFB1845 TGFB1846 TGFB1847 TGFB1848 TGFB1849 TGFB1850 TGFB1851 TGFB1852 TGFB1853 TGFB1854 TGFB1855 TGFB1856 TGFB1857 TGFB1858 TGFB1859 TGFB1860 TGFB1861 TGFB1862 TGFB1863 TGFB1864 TGFB1865 TGFB1866 TGFB1867 TGFB1868 TGFB1869 TGFB1870 TGFB1871 TGFB1872 TGFB1873 TGFB1874 TGFB1875 TGFB1876 TGFB1877 TGFB1878 TGFB1879 TGFB1880 TGFB1881 TGFB1882 TGFB1883 TGFB1884 TGFB1885 TGFB1886 TGFB1887 TGFB1888 TGFB1889 TGFB1890 TGFB1891 TGFB1892 TGFB1893 TGFB1894 TGFB1895 TGFB1896 TGFB1897 TGFB1898 TGFB1899 TGFB1900 TGFB1901 TGFB1902 TGFB1903 TGFB1904 TGFB1905 TGFB1906 TGFB1907 TGFB1908 TGFB1909 TGFB1910 TGFB1911 TGFB1912 TGFB1913 TGFB1914 TGFB1915 TGFB1916 TGFB1917 TGFB1918 TGFB1919 TGFB1920 TGFB1921 TGFB1922 TGFB1923 TGFB1924 TGFB1925 TGFB1926 TGFB1927 TGFB1928 TGFB1929 TGFB1930 TGFB1931 TGFB1932 TGFB1933 TGFB1934 TGFB1935 TGFB1936 TGFB1937 TGFB1938 TGFB1939 TGFB1940 TGFB1941 TGFB1942 TGFB1943 TGFB1944 TGFB1945 TGFB1946 TGFB1947 TGFB1948 TGFB1949 TGFB1950 TGFB1951 TGFB1952 TGFB1953 TGFB1954 TGFB1955 TGFB1956 TGFB1957 TGFB1958 TGFB1959 TGFB1960 TGFB1961 TGFB1962 TGFB1963 TGFB1964 TGFB1965 TGFB1966 TGFB1967 TGFB1968 TGFB1969 TGFB1970 TGFB1971 TGFB1972 TGFB1973 TGFB1974 TGFB1975 TGFB1976 TGFB1977 TGFB1978 TGFB1979 TGFB1980 TGFB1981 TGFB1982 TGFB1983 TGFB1984 TGFB1985 TGFB1986 TGFB1987 TGFB1988 TGFB1989 TGFB1990 TGFB1991 TGFB1992 TGFB1993 TGFB1994 TGFB1995 TGFB1996 TGFB1997 TGFB1998 TGFB1999 TGFB2000 TGFB2001 TGFB2002 TGFB2003 TGFB2004 TGFB2005 TGFB2006 TGFB2007 TGFB2008 TGFB2009 TGFB2010 TGFB2011 TGFB2012 TGFB2013 TGFB2014 TGFB2015 TGFB2016 TGFB2017 TGFB2018 TGFB2019 TGFB2020 TGFB2021 TGFB2022 TGFB2023 TGFB2024 TGFB2025 TGFB2026 TGFB2027 TGFB2028 TGFB2029 TGFB2030 TGFB2031 TGFB2032 TGFB2033 TGFB2034 TGFB2035 TGFB2036 TGFB2037 TGFB2038 TGFB2039 TGFB2040 TGFB2041 TGFB2042 TGFB2043 TGFB2044 TGFB2045 TGFB2046 TGFB2047 TGFB2048 TGFB2049 TGFB2050 TGFB2051 TGFB2052 TGFB2053 TGFB2054 TGFB2055 TGFB2056 TGFB2057 TGFB2058 TGFB2059 TGFB2060 TGFB2061 TGFB2062 TGFB2063 TGFB2064 TGFB2065 TGFB2066 TGFB2067 TGFB2068 TGFB2069 TGFB2070 TGFB2071 TGFB2072 TGFB2073 TGFB2074 TGFB2075 TGFB2076 TGFB2077 TGFB2078 TGFB2079 TGFB2080 TGFB2081 TGFB2082 TGFB2083 TGFB2084 TGFB2085 TGFB2086 TGFB2087 TGFB2088 TGFB2089 TGFB2090 TGFB2091 TGFB2092 TGFB20

IVNS1ABP JMJD1C KIAA1549 KIF1B KIZ KLHL7 KRIT1 LAMB2 LCA5
 LCK LIMK1 LOXL1 LPL LRAT LRP5 LRRC32 MAK MAX MDH2 MEG3
 MERTK METTL27 MKS1 MLXIPL MT-ATP6 MT-CO1 MT-CO3 MT-CYB
 MT-ND1 MT-ND2 MT-ND4 MT-ND4L MT-ND5 MT-ND6 MVK MYD88
 MYOC NCF1 NDP NDUFS2 NEK1 NEK2 NEU1 NF1 NMNAT1 NOD2
 NR2E3 NRL NUS1 OFD1 PAX6 PCARE PCNA PDCD10 PDE6A PDE6B
 PDE6C PDE6G PDE6H PIK3CA POMGNT1 PRCD PROM1 PRPF3 PRPF31
 PRPF4 PRPF6 PRPF8 PRPH2 PSAP RAX2 RBP3 RDH11 RDH12 RDH5
 REEP6 RET RFC2 RGR RHO RLBP1 ROM1 RP1 RP1L1 RP2 RP9 RPE65
 RPGR RPGRIP1 RREB1 RTL1 RTTN SAG SCAPER SDHA SDHAF2
 SDHB SDHC SDHD SEC24C SELENOI SEMA4A SERPINC1 SETD2
 SLC24A1 SLC25A11 SLC37A4 SLC6A6 SLC7A14 SMAD4 SMCHD1
 SMPD1 SNRNP200 SPATA7 SSBP1 STN1 STX1A TBL2 TBX1 TLCD3B
 TMEM127 TMEM231 TMEM270 TOPORS TREX1 TSPAN12 TTC8 TUB TULP1 UFD1 UNC119 USH2A USP45
 VHL VPS37D WDR19 WT1 YME1L1 ZNF408 ZNF513]

HP_PREMATURE_CORONARY_ARTERY_ATHEROSCLEROSIS > This term refers a gene set that is related to the premature development of atherosclerosis in the coronary arteries, which can lead to coronary artery disease (CAD). [ABCA1 ABCG5 ABCG8 ACTA2
 APOA1 APOB APOE CEP19 CYP27A1 ERCC6 ERCC8 GPIHBP1 LDLR LDLRAP1 LIPC
 LMNA LRP6 MEF2A PCSK9]

ST_WNT_BETA_CATENIN_PATHWAY > This identifier refers to a gene pathway involved in the Wnt/beta-catenin signaling. The Wnt/beta-catenin pathway is crucial for various cellular processes, including development, cell proliferation, and differentiation. [AKT1 AKT2 AKT3
 ANKRD6 APC AXIN1 AXIN2 CBY1 CER1 CSNK1A1 CTNNB1 CXXC4 DACT1
 DKK1 DKK2 DKK3 DKK4 DVL1 FRAT1 FSTL1 GSK3A GSK3B LRP1 MVP NKD1 NKD2 PIN1 PSEN1 PTPRA
 RPSA SENP2 SFRP1 TSHB WIF1]

GOBP_WNT_SIGNALING_PATHWAY_INVOLVED_IN_MIDBRAIN_DOPAMINERGIC_NEURON_DIFFERENTIATION
 > This identifier contains genes that are related to the role of the Wnt signaling pathway in the differentiation of dopaminergic neurons in the midbrain. This process is important for the development of the nervous system and is particularly relevant to the study of diseases like schizophrenia and Parkinson's disease, where dopaminergic neurons are affected. [CSNK1D CSNK1E CTNNB1 FZD1 LRP6 RYK WNT1 WNT2 WNT3 WNT3A WNT5A WNT9B]

GOBP_POSITIVE_REGULATION_OF_DOPAMINE_RECEPTOR_SIGNALING_PATHWAY > This identifier contains genes responsible for a biological process that positively regulates the signaling pathway of dopamine receptors. Dopamine receptors are critical for many neurological processes, and their signaling pathways are important in the context of neurological diseases, e.g. schizophrenia and Parkinson's disease. [CAV2 DRD3 LRRK2 PRMT5 VPS35]

Supplementary Tables

Table S1

Association between polygenic risk for schizophrenia (PRSSZ) at different p-value thresholds and first two retinal principal components

PRS	PC	Coef	CI(low)	CI(high)	SE	F	p	pFWER
PRSSZ	PC1	-0.03	-0.044	-0.007	0.00946	7.26	0.007	0.0140
PRSSZ 0.001	PC2	0.00	-0.006	0.002	0.00208	1.05	0.3061	0.3061
PRSSZ 0.05	PC1	-0.01	-0.029	0.009	0.0096	1.02	0.3136	0.3136
PRSSZ 0.1	PC2	0.00	-0.007	0.001	0.00211	2.44	0.1183	0.2366
PRSSZ 0.2	PC1	-0.02	-0.042	0	0.01078	3.69	0.0547	0.1094
PRSSZ 0.3	PC2	0.00	-0.004	0.005	0.00237	0.04	0.8383	0.8383
PRSSZ 0.4	PC1	-0.02	-0.043	0.001	0.01109	3.60	0.0578	0.1156
PRSSZ 0.5	PC2	0.00	-0.004	0.006	0.00243	0.17	0.6821	0.6821
PRSSZ 1	PC1	-0.02	-0.042	0.001	0.0111	3.40	0.0652	0.1304
PRSSZ	PC2	0.00	-0.004	0.005	0.00244	0.06	0.8025	0.8025
PRSSZ 0.001	PC1	-0.02	-0.04	0.003	0.0112	2.74	0.0978	0.1956
PRSSZ 0.05	PC2	0.00	-0.004	0.005	0.00246	0.06	0.807	0.8070
PRSSZ 0.1	PC1	-0.02	-0.039	0.005	0.01116	2.41	0.1202	0.2404
PRSSZ 0.2	PC2	0.00	-0.004	0.006	0.00245	0.18	0.6751	0.6751
PRSSZ 0.3	PC1	-0.02	-0.037	0.007	0.01115	1.83	0.1757	0.3514
PRSSZ 0.4	PC2	0.00	-0.004	0.006	0.00245	0.13	0.7233	0.7233
PRSSZ 0.5	PC1	-0.02	-0.037	0.007	0.01113	1.87	0.1714	0.3428
PRSSZ 1	PC2	0.00	-0.004	0.006	0.00244	0.15	0.7022	0.7022

Table S2

Permutation test regression between polygenic risk for schizophrenia enriched for multiple gene pathways and first two retinal principal components at p-value threshold 1 using PRSet

Pathway	GeseaPathwayCode	Num_SNP	PC	Estimate	SE	selfcontained.p	competitive.p	Groups	selfcon.pFWE	comp.pFWE	CIhigh	CIlow
ABNOVAS PRS	M43559	2265	PC1	0.0095753	0.0135479	0.4797110	0.4908510	Microvasculature	0.959422	0.9817020	0.036	-0.017
ABNOVAS PRS	M43559	2265	PC2	0.0040916	0.0074301	0.5818610	0.6275370	Microvasculature	0.959422	0.9817020	0.019	-0.010
ACUTEINFLAM PRS	M6557	817	PC1	-0.0167891	0.0133750	0.2093900	0.2312770	Inflammation	0.418780	0.4625540	0.009	-0.043
ACUTEINFLAM PRS	M6557	817	PC2	-0.0033672	0.0073354	0.6462180	0.6651330	Inflammation	0.646218	0.6651330	0.011	-0.018
CATENIN PRS	M17761	341	PC1	-0.0212782	0.0131636	0.1060050	0.1272870	Developmental	0.212010	0.2545740	0.005	-0.047
CATENIN PRS	M17761	341	PC2	-0.0057140	0.0072195	0.4286740	0.4358560	Developmental	0.428674	0.4358560	0.008	-0.020
CHROINFLAM PRS	M15140	138	PC1	0.0035881	0.0133002	0.7873310	0.8054190	Inflammation	0.787331	0.8054190	0.030	-0.022
CHROINFLAM PRS	M15140	138	PC2	0.0078411	0.0072942	0.2823910	0.2876710	Inflammation	0.564782	0.5753420	0.022	-0.006
CORART PRS	M36658	241	PC1	-0.0026740	0.0131740	0.8391530	0.8446160	Microvasculature	1.000000	1.0000000	0.023	-0.028
CORART PRS	M36658	241	PC2	0.0036210	0.0072251	0.6162520	0.6251370	Microvasculature	1.000000	1.0000000	0.018	-0.011
DOPPOSREG PRS	M24111	68	PC1	0.0094135	0.0134067	0.4825900	0.5040500	Developmental	0.965180	1.0000000	0.036	-0.017
DOPPOSREG PRS	M24111	68	PC2	-0.0034873	0.0073528	0.6352980	0.6315370	Developmental	0.965180	1.0000000	0.011	-0.018
NEUROINFLAM PRS	M24927	747	PC1	-0.0271559	0.0133030	0.0412220	0.0511949	Inflammation	0.082444	0.1023898	-0.001	-0.053
NEUROINFLAM PRS	M24927	747	PC2	0.0049284	0.0072961	0.4993690	0.5100490	Inflammation	0.499369	0.5100490	0.019	-0.009
TGFB PRS	M18933	248	PC1	-0.0079258	0.0130943	0.5449910	0.5604440	Inflammation	1.000000	1.0000000	0.018	-0.034
TGFB PRS	M18933	248	PC2	0.0043773	0.0071814	0.5421730	0.5496450	Inflammation	1.000000	1.0000000	0.018	-0.010
WNT PRS	M25305	107	PC1	-0.0247761	0.0133031	0.0625475	0.0794921	Developmental	0.125095	0.1589842	0.001	-0.051
WNT PRS	M25305	107	PC2	-0.0011356	0.0072961	0.8763190	0.8812120	Developmental	0.876319	0.8812120	0.013	-0.015

Table S3

Variance inflation factor for macular subfields in a robust linear regression model with polygenic risk scores for schizophrenia

Phenotype	VIF
Inner Inferior left	5.60
Inner Inferior right	5.85
Outer Inferior left	3.20
Outer Inferior right	3.46
Inner Nasal left	9.33
Inner Nasal right	10.40
Outer Nasal left	6.02
Outer Nasal right	5.69
Inner Superior left	7.37
Inner Superior right	6.87
Outer Superior left	3.87
Outer Superior right	3.56
Inner Temporal left	11.42
Inner Temporal right	7.92
Outer Temporal left	5.63
Outer Temporal right	5.67
Central left	2.89
Central right	2.75

Supplementary Figures

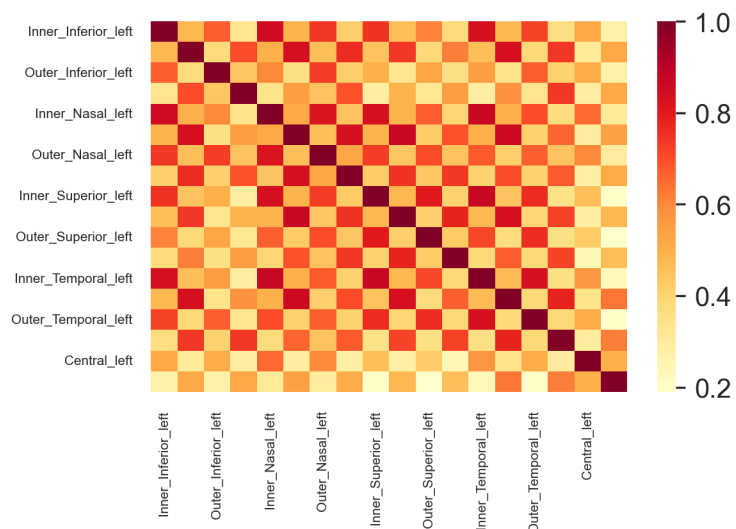


Figure S1. Covariance matrix of macular subfields

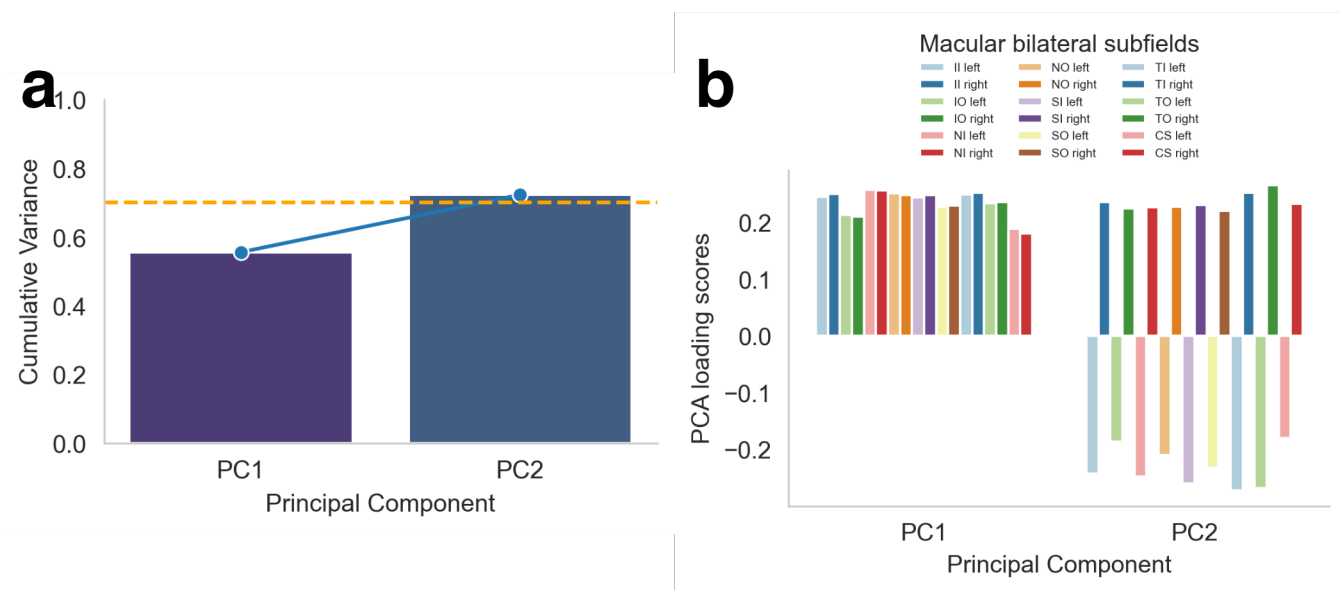


Figure S2. a. Cumulative percentage variance explained by the principal components. The first two and four principal components respectively account for more than 70 percent variance, as indicated by the horizontal dotted red line. These components were included in the subsequent regression models. b. The loading scores of macular subfields for the first two principal components for each eye respectively

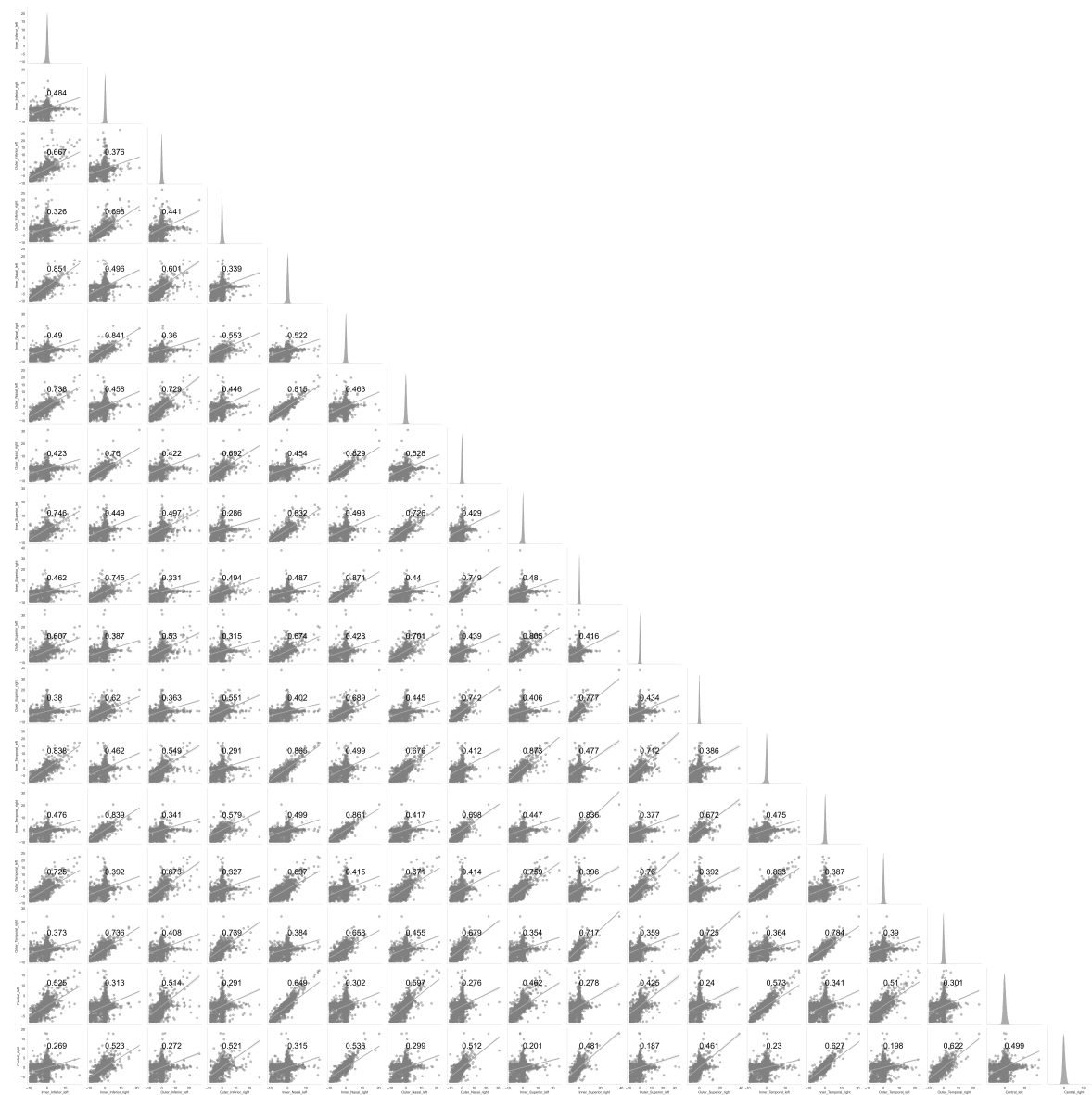


Figure S3. Pearson correlation coefficients between retinal phenotypes and showing their individual distribution

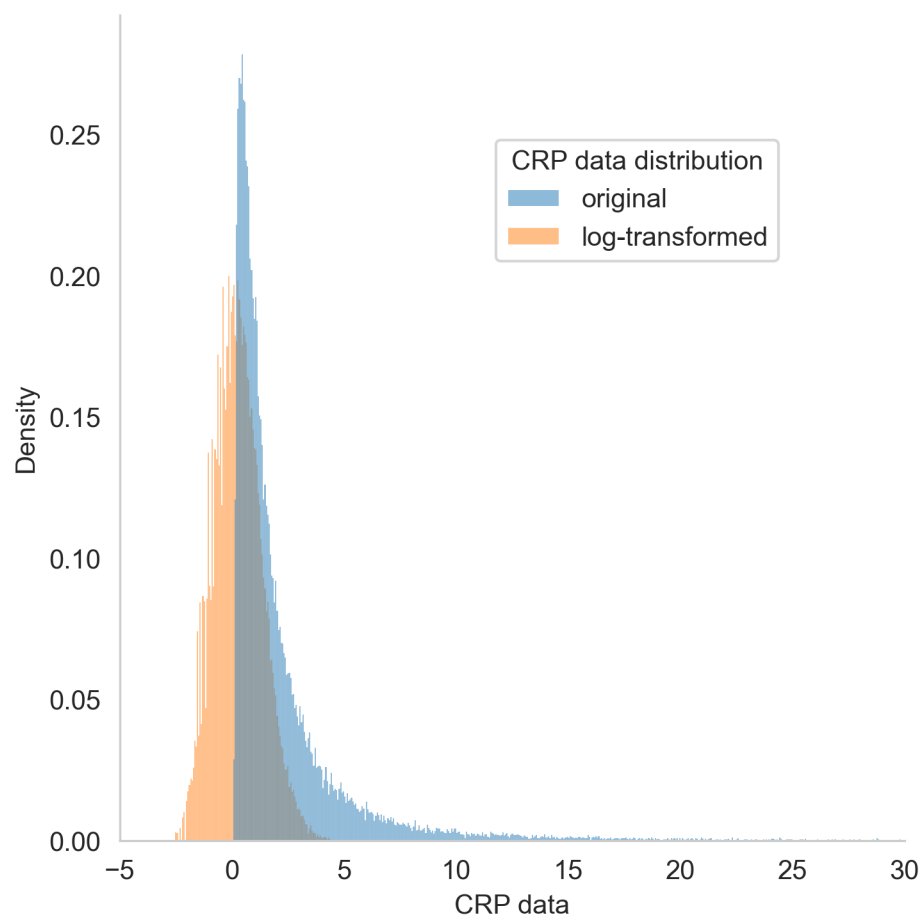


Figure S4. Logarithmic transformation of CRP levels