

ASCVD risk refinement with NT-proBNP for statin allocation among low- and intermediate risk individuals

Jelena Pavlović, MD, MSc¹; Maryam Kavousi, MD, PhD¹; M. Kamran Ikram, MD, PhD^{1,2}; Daniel Bos, MD, PhD^{1,3,4,5}; M. Arfan Ikram, MD, PhD¹; Maarten J.G. Leening, MD, PhD^{1,3,6}

¹ Department of Epidemiology, Erasmus MC - University Medical Center Rotterdam, Rotterdam, the Netherlands

² Department of Neurology, Erasmus MC - University Medical Center Rotterdam, Rotterdam, the Netherlands

³ Department of Radiology, Erasmus MC - University Medical Center Rotterdam, Rotterdam, the Netherlands

⁴ Department of Cardiovascular Sciences, KU Leuven, Leuven, Belgium

⁵ Department of Clinical Epidemiology, Harvard T.H. Chan School of Public Health, Boston, MA, US

⁶ Department of Cardiology, Erasmus MC - University Medical Center Rotterdam, Rotterdam, the Netherlands

Short title: Risk-refining with NT-proBNP for ASCVD prevention

Corresponding Author

Maarten J.G. Leening, MD, PhD

Departments of Epidemiology and Cardiology

Erasmus MC – University Medical Center Rotterdam

P.O. Box 2040, 3000 CA Rotterdam

Tel: +31 10 70 44229 Fax: +31 10 70 44657 Email: m.leening@erasmusmc.nl

Abstract word count: 283

Manuscript text (without title page, abstract, references, tables, and figure legends): **3121**

Total document word count: 6026

ABSTRACT

Background: Statin trials targeting low- to intermediate risk individuals, namely MEGA, JUPITER, and HOPE-3, have demonstrated benefit of statin use for primary prevention of atherosclerotic cardiovascular disease (ASCVD), but are poorly reflected in guideline recommendations for primary prevention of ASCVD. N-terminal pro-B-type natriuretic peptide (NT-proBNP) may refine ASCVD risk in low-to intermediate risk individuals eligible for HOPE-3, JUPITER and MEGA, and aid statin initiation in low- to intermediate risk populations.

Methods: 5434 participants, aged 45 years and above from the prospective population-based Rotterdam Study, free of ASCVD, heart failure, and diabetes, were included between 1997 and 2008. Eligibility criteria for MEGA, JUPITER, and HOPE-3 trials were checked for each participant. ASCVD event rates, hazard ratios (HR), 5-year numbers needed to treat (NNT_{5y}), and screen (NNS_{5y}) per trial eligible population and NT-proBNP category (≤ 50 , 50-100, and >100 pg/mL) were calculated.

Results: Median age was 61.6 years, 58.9% were women, median NT-proBNP was 60 pg/mL. The proportions of participants eligible for MEGA, JUPITER and HOPE-3 were 34.9%, 10.4% and 23.7%. Incidence rates per 1000 person-years for ASCVD were 10.4 (95%CI: 60.1-67.9) for MEGA, 16.8 (95%CI: 13.6-20.6) for JUPITER, and 12.1 (95%CI: 10.3-14) for HOPE-3. Adjusted HR in trial eligible individuals for NT-proBNP >100 pg/mL compared to ≤ 50 pg/mL level were 1.73 (95%CI: 1.21-2.47), 1.46 (95%CI: 0.80-2.66) and 1.50 (95%CI: 0.99-2.26), respectively. Estimated NNT_{5y} among trial eligible individuals with NT-proBNP levels >100 pg/mL based on high-intensity statin treatment, varied from 23 to 34 to prevent one ASCVD event, while NNS_{5y} ranged between 56 and 134.

Conclusions: NT-proBNP level >100 pg/mL identifies individuals at the highest ASCVD risk among low- to intermediate risk populations who are likely to benefit from statin treatment at acceptable NNT_{5y} and NNS_{5y} .

Key words: Atherosclerotic cardiovascular disease, primary prevention, N-terminal pro-B-type natriuretic peptide, statin, randomized clinical trial, epidemiology, population-based.

Clinical Perspective

1. What is New?

- NT-proBNP level >100 pg/mL can identify individuals at the highest ASCVD risk among low- to intermediate risk populations who are likely to benefit from statin treatment at acceptable numbers needed to treat and screen.
- Among apparently healthy individuals without prior ASCVD and diabetes mellitus, 60% was deemed to be at low- to intermediate risk by qualifying for at least one of three RCT based on the trial eligibility criteria, and one out four individuals had NT-proBNP level >100 pg/mL.

2. What are the Clinical Implications?

- NT-proBNP level can be used for risk refining in low- to intermediate risk individuals who are most likely to benefit from statin initiation for ASCVD primary prevention.

75 **Non-standard Abbreviations and Acronyms**

76	ASCVD	atherosclerotic cardiovascular disease
77	CHD	coronary heart disease
78	HOPE-3	Heart Outcomes Prevention Evaluation-3 Trial
79	JUPITER	Justification for the Use of Statins in Prevention: Intervention Trial Evaluating
80		Rosuvastatin
81	MEGA	The Management of Elevated Cholesterol in the Primary Prevention Group of
82		Adult Japanese Trial
83	NNS	number needed to screen
84	NNT	number needed to treat
85	NT-proBNP	N-terminal pro-B-type natriuretic peptide
86	RCT	randomized controlled trial

INTRODUCTION

Management of blood cholesterol is one of the cornerstones of primary prevention of atherosclerotic cardiovascular disease (ASCVD).^{1,2} A variety of randomized clinical trials (RCT) have demonstrated the efficacy of statin treatment among individuals free of ASCVD.^{3,4} Three major RCT, namely the Management of Elevated Cholesterol in the Primary Prevention Group of Adult Japanese (MEGA)⁵, Justification for the Use of Statins in Prevention: Intervention Trial Evaluating Rosuvastatin (JUPITER)⁶, and Heart Outcomes Prevention Evaluation-3 (HOPE-3)^{7,8}, have established the benefit of statin treatment in low- to intermediate risk individuals free of ASCVD.

We previously demonstrated that the findings of these three trials were poorly reflected in the US and European cholesterol treatment guideline recommendations.⁹ In addition, extending statin treatment recommendations to healthy individuals at low ASCVD risk raised concerns of statin overprescription.¹⁰⁻¹² Hence, the latest US and European guidelines suggest using additional non-traditional risk factors, referred to as either risk enhancers or risk modifiers, to refine, and thus improve risk assessment in individuals at low- or intermediate ASCVD risk.^{1,2}

In this regard, N-terminal pro-B-type natriuretic peptide (NT-proBNP) is a promising biomarker with potential to improve ASCVD risk assessment in low- to intermediate risk populations. NT-proBNP has been consistently associated with ASCVD risk,^{13,14} and is widely available and affordable,¹⁵ which makes it an appealing tool for ASCVD risk refinement in clinical practice. The value of NT-proBNP as a biomarker for risk refinement and statin allocation in primary prevention of ASCVD requires further evaluation.

In this study, we evaluate the application of NT-proBNP as a risk refining and decision-making tool in community-dwelling individuals meeting the eligibility criteria for three low- to intermediate risk statin RCT for primary prevention of ASCVD.

METHODS

Setting and Study Population

We used data from the Rotterdam Study, a prospective population-based cohort study drawn from the unselected population of a suburb in Rotterdam, designed to investigate etiology, preclinical phase, prognosis, and potential intervention targets for chronic diseases in mid- and late-life. The Rotterdam Study rationale and design have been described in detail previously.¹⁶

The Rotterdam Study recruited individuals in four subcohorts. Extensive examinations at baseline and follow-up visits were carried out every three to four years. NT-proBNP was measured in three subcohorts from 1997 to 2008. In total, 10,522 participants underwent examinations in these three visits combined, of which 9,326 participants had valid NT-proBNP measurement, informed consent, and follow-up (Figure S1).

All participants provided written informed consent to participate in the study and to have their information obtained from treating physicians. The Rotterdam Study has been approved by the Medical Ethics Committee of the Erasmus MC (registration number MEC 02.1015) and by the Dutch Ministry of Health, Welfare and Sport (Population Screening Act WBO, license number 1071272-159521-PG). The Rotterdam Study has been entered into the Netherlands National Trial Register (NTR; www.trialregister.nl) and into the WHO International Clinical Trials Registry Platform (ICTRP; www.who.int/ictrp/network/primary/en/) under shared catalogue number NTR6831.

NT-proBNP Measurement

NT-proBNP was measured from blood samples stored at -80°C, collected in glass tubes with clot activator and serum separation gel. NT-proBNP was measured using an electrochemiluminescence immunoassay (Elecsys proBNP; Hoffman-La Roche Ltd., Basel, Switzerland) and Elecsys 2010 analyzer, as described previously.^{17,18}

Assessment of ASCVD

The main outcome was incident ASCVD, composed of myocardial infarction, coronary revascularization, non-hemorrhagic stroke, and ASCVD mortality.^{19,20} Events were adjudicated until January 1st, 2015. Follow-up and adjudication of outcome events was based on the general practitioners' and medical specialists' reports and verified by the study physicians, in detail described previously.^{19,20}

Assessment of Covariables

Information on medication use, smoking behavior, postmenopausal status, and medical history was collected by trained interviewers using a structured home interview. Anthropometric measures and laboratory testing were obtained during a visit to the research center.¹³ A detailed description of ASCVD risk factors assessment and used definitions for blood pressure, triglycerides, total, high-density and low-density cholesterol, glucose, c-reactive protein, thyroid-stimulating hormone, serum creatinine, estimated glomerular filtration rate, alanine aminotransferase, presence of diabetes mellitus and family history of premature coronary heart disease are provided in the Supplemental Methods.

Statin Trial Eligibility

We followed eligibility criteria for three double blind placebo-controlled RCT on statin use in primary prevention targeted at low- to intermediate risk individuals with hard ASCVD end points: MEGA,^{5,21} JUPITER,⁶ and HOPE-3⁷ (Table 1, Table S1).

Inclusion criteria among the RCT varied due to differences in design and hypothesis. Major RCT inclusion criteria included: age, sex, lipid levels, C-reactive protein levels, history of diabetes mellitus, blood pressure, and postmenopausal status for women (Table 1, Table S1). Data on a few minor exclusion criteria were not available in the Rotterdam Study, such as creatine phosphokinase levels, illicit drug abuse, and rare medical conditions (Table S1).

Finally, to select apparently healthy individuals and emulate eligibility criteria for three RCT (Figure S1), in the present analysis we included a total of 5434 participants over 45 years of age, without a history of diabetes mellitus, ASCVD, and heart failure, with low-density lipoprotein (LDL) cholesterol levels below 190 mg/dL (4.9 mmol/L), not using a statin, and without uncontrolled risk factors. The uncontrolled risk factors in essence reflected minor exclusion criteria defined by three RCT, such as uncontrolled hypertension, hypothyroidism, history of chronic liver disease, use of systemic corticosteroids or cyclosporin, and high levels of serum creatinine and triglycerides, as defined in the Supplemental Methods. History of ASCVD was defined as any of the following: myocardial infarction, coronary or other arterial revascularization procedure, stroke, transient ischemic attack, or repeated prescription of nitrates (as a proxy for angina pectoris).^{19,20,22,23} We excluded individuals with age-specific levels of NT-proBNP indicative of underlying heart failure (if age <50 years and NT-proBNP >450 pg/mL, or age 50-75 years and NT-proBNP >900 pg/mL, or age >75y and NT-proBNP >1800 pg/mL).²⁴

Statistical Analysis

First, we determined the cardiovascular risk factor profiles for each trial, and proportions of the study population meeting eligibility criteria for MEGA, JUPITER, and HOPE-3. In addition, we divided the trial eligible populations using three NT-proBNP thresholds (≤ 50 pg/mL, 50-100 pg/mL, and > 100 pg/mL).²⁵

Next, we calculated incidence rates for ASCVD events per 1000 person-years in the entire study population, trial eligible subgroups, and by NT-proBNP categories.

To evaluate the risk refining properties of the three NT-proBNP categories, we applied Cox regression models. Specifically, we analyzed associations of continuous natural-log-transformed NT-proBNP, and NT-proBNP categories in relation to the incidence of ASCVD events in the total population as well as in trial eligible subgroups. The reference for comparison was the lowest NT-proBNP category (≤ 50 pg/mL). We report adjusted hazard ratios (HR) for two models: model 1, adjusted for age and sex, and model 2, additionally adjusted for traditional risk factors: current smoking, systolic blood pressure, total and high-density lipoprotein cholesterol.

To explore the potential yield of NT-proBNP as a risk refining and statin allocation tool in the context of ASCVD primary prevention, we calculated 5-year numbers needed to treat (NNT_{5y}) and numbers needed to screen (NNS_{5y}) for each NT-proBNP category.

Based on the observed ASCVD event rates and the anticipated risk reduction with statin therapy, we calculated NNT_{5y} . We calculated NNT_{5y} for 30% and 50% LDL cholesterol reduction, corresponding to treatment with moderate- and high-intensity statins, respectively.²⁶ For primary prevention, expected relative risk reduction of 25% in major ASCVD events was used for each 38.7 mg/dL (1.0 mmol/L) of LDL cholesterol lowering.³ We calculated NNT_{5y}

using the following formula: $NNT_{5y} = 1 / (5 * [\text{observed ASCVD incidence rate}] * [\text{observed median LDL in mmol/L}] * [\text{anticipated proportional LDL reduction}] * [\text{anticipated ASCVD relative risk reduction}])$.

NNS_{5y} to prevent one ASCVD event were calculated based on the NNT_{5y} and NT-proBNP level distributions for trial eligible subgroups. NNS_{5y} were calculated by multiplying NNT_{5y} with inverse probability of the prevalence of the NT-proBNP threshold, in total population and trial eligible subgroups.

Sensitivity analyses restricted to a composite coronary heart disease (CHD) outcome were performed and presented the corresponding results in the Supplemental Material. The CHD outcome was defined as a composite of myocardial infarction, coronary revascularization, and CHD mortality.¹⁹ For CHD, the relative risk reduction of 29% in CHD events was used for each 38.7 mg/dL (1.0 mmol/L) of LDL cholesterol lowering to calculate respective NNT_{5y} and NNS_{5y} .³

We had complete data for 95.7% of traditional cardiovascular risk factors. Missing values were handled by single imputation using an expectation-maximization algorithm, separately for each sex, using age and all other traditional risk factors.²⁷ We used IBM SPSS Statistics version 25.0 (IBM Corp, Armonk, NY, USA) and R version 4.0.4 (R Foundation for Statistical Computing, Vienna, Austria) for all analyses.

RESULTS

Median age in the total population was 61.6 years and 58.9% were women. The median NT-proBNP was 60 pg/mL (Table 2). MEGA eligible individuals were younger and had lower

median NT-proBNP levels compared to JUPITER and HOPE-3 eligible individuals. The HOPE-3 eligible population had the most unfavorable lipid profile.

Overall, 1896 (34.9%, 95%CI: 33.6-36.2), 567 (10.4%, 95%CI: 9.6-11.3), and 1287 (23.7%, 95%CI: 22.6-24.8) individuals of the total study population fitted the eligibility criteria for MEGA, JUPITER, and HOPE-3, respectively (Figure 1). JUPITER had the highest proportion of eligible individuals with NT-proBNP levels >100 pg/mL (41.1%), as compared to MEGA (21.7%) and HOPE-3 (30.6%) eligible individuals (Table 2).

In total population, during a mean (SD) follow-up of 9.9 (4.2) years, 681 first ASCVD events in total were observed, corresponding to an ASCVD event rate of 12.6 (95%CI: 11.7-13.6) per 1000 person-years. Among trial eligible individuals with NT-proBNP levels >100 pg/mL, JUPITER had the highest ASCVD incidence rate (24.0 per 1000 person-years), and MEGA the lowest (15.0 per 1000 person-years) (Table S2).

NT-proBNP >100 pg/mL was significantly associated with ASCVD incidence after adjusting for traditional risk factors (model 2) in the total study population and among individuals eligible for MEGA (Figures 2). Multivariable adjusted HR for ASCVD events comparing NT-proBNP levels of >100 pg/mL and ≤50 pg/mL were 1.56 (95%CI: 1.27-1.91; P<0.001) in the total population, 1.72 (95%CI: 1.20-2.45; P=0.003) among MEGA eligible, 1.46 (95%CI: 0.80-2.67; P=0.213) among JUPITER eligible, and 1.50 (95%CI: 1.00-2.27; P=0.052) among HOPE-3 eligible individuals (Figure 2). Adjustment for traditional risk factors only marginally affected the HR (Table S3). The ASCVD free survival was lowest across all trial eligible individuals when NT-proBNP levels were >100 pg/mL (Figure 3).

Estimated NNT_{5y} to avoid one ASCVD event were lowest for JUPITER eligible individuals, except for those with NT-proBNP levels ≤50 pg/mL (Figure 4, Table S4). Among

MEGA, JUPITER and HOPE-3 eligible with NT-proBNP levels >100 pg/mL, 48, 39 and 56 individuals would need to be treated with moderate-intensity statins for 5 years to prevent one ASCVD event. With high-intensity statins, NNT_{5y} were 29 for MEGA, 23 for JUPITER, and 34 for HOPE-3.

Among individuals with NT-proBNP levels >100 pg/mL for MEGA, JUPITER, and HOPE-3 eligible, NNS_{5y} based on the NNT_{5y} with high-intensity statins were 134, 56 and 111, respectively (Figure 4). Estimated NNT_{5y} and NNS_{5y} were lower for high-intensity statin treatment compared to moderate-intensity statin treatment (Table S4).

Results for CHD outcomes followed a similar pattern to those for ASCVD (Tables S5 and S6, Figures S2 and S3). Estimated NNT_{5y} and NNS_{5y} to prevent an ASCVD event were lower than those needed to prevent a CHD event (Table S4).

DISCUSSION

NT-proBNP levels >100 pg/mL identify individuals at an increased risk of ASCVD among individuals at low- to intermediate risk who are eligible for statin RCT for primary prevention of ASCVD.⁵⁻⁷ We found comparable numbers needed to treat to those reported by the three original trials. Our results imply that NT-proBNP could be considered as a risk refining tool among individuals at low- to intermediate risk for primary prevention of ASCVD.

The percentages of eligibility for three statin primary prevention trials were 34.9% for MEGA, 10.4% for JUPITER and 23.7% for HOPE-3, with minimal overlap between trials, meaning that these trials differentially selected low- to intermediate risk profiles in the general population free of ASCVD. Overall, 57.2% of the general population sample free of ASCVD and diabetes, was eligible for at least one of these three RCT, meaning that for these individuals, the

evidence of the statin efficacy to prevent ASCVD is established. This finding emphasizes the broad evidence base for statin use in primary prevention of ASCVD, which is in stark contrast with the small number of selected very high-risk individuals that is currently strongly recommended statin therapy in the most recent European prevention guidelines.²⁸ Although NT-proBNP >100 pg/mL was significantly associated with ASCVD incidence in the total study population and MEGA eligible individuals (Figures 2), but not among JUPITER and HOPE-3 eligible, the association was comparable across trial eligible populations. The lack of significant association might be explained with limited number of events during follow-up, given that substantially fewer individuals qualified for JUPITER and HOPE-3 compared to MEGA (Table S3).

In this study we used NT-proBNP as a tool to refine ASCVD risk to identify low- to intermediate risk individuals for whom evidence supports preventive statin treatment. To examine the yield of statin treatment in the trial eligible population we calculated NNT_{5y} and NNS_{5y} . NNT is commonly used in clinical trials to assess the acceptability of the investigated intervention.^{29,30} Generally, the lower the NNT, the more acceptable the intervention is. NNT over approximately five years of statin treatment reported by the three evaluated statin trials ranged from 25 to 119 (Table 1).⁵⁻⁸ In the present study, we report comparable NNT_{5y} varying from 23 to 34 for ASCVD for high-intensity statins to prevent one event among trial eligible individuals with NT-proBNP levels >100 pg/mL. In addition, NNS provides an estimate of the number of individuals that need to undergo NT-proBNP testing to identify individuals at NT-proBNP levels >100 pg/mL, and subsequently prevent one ASCVD event in the coming five years. In our study, among trial eligible individuals, NNS_{5y} ranged between 56 to 134 with high-intensity statins. Our results indicate that NT-proBNP level >100 pg/mL can identify individuals

at the highest ASCVD risk among low- to intermediate risk populations who are likely to benefit from statin treatment at acceptable NNT_{5y} and NNS_{5y}. Ultimately, whether these estimated NNT_{5y} and NNS_{5y} are acceptable for clinical practice is highly dependent on the healthcare system. Although NNT has its limitations,³⁰ it can inform a shared decision-making between patient and healthcare provider regarding the pros and cons of statin use in primary prevention of ASCVD.

Implications

As apparently healthy individuals at low- to intermediate ASCVD risk are more likely to have ASCVD risk around the decision thresholds, in this population NT-proBNP can further inform decision regarding the allocation of statin treatment. We demonstrated that statin initiation in this population based on NT-proBNP level of >100 pg/mL could be acceptable in terms of how many individuals would need to be screened and treated with statins to avoid one ASCVD event. Current US and European ASCVD prevention guidelines do not yet recommend the use of NT-proBNP as a risk enhancer or modifier for risk stratification.^{1,2} In contrast, NT-proBNP has been endorsed in the latest iteration of the ESC guidelines for peri-operative cardiac care to identify apparently healthy individuals at increased risk for peri-operative cardiac events.³¹ Furthermore, compared to imaging methods endorsed by the US and European ASCVD prevention guidelines, the price of a single NT-proBNP measurement is considerably lower. In addition, NT-proBNP testing could be easily integrated into routine clinical practice. Our results suggest that the application of NT-proBNP as a risk refining tool for primary prevention warrants further evaluation, including defining optimal age- and sex-specific thresholds for clinical decision-making in ASCVD risk refinement. For example, NT-proBNP levels are higher in

314 women,³² NT-proBNP increases with age,²⁴ and co-morbidities further affect levels of NT-
315 proBNP.³³

316

317 *Limitations*

318 Specific limitations of our study need to be addressed. As most of the Rotterdam Study
319 population is of European descent (95.7% white), our findings require validation in other
320 ethnicities. Although large differences across ethnicities are not expected, it is relevant to
321 establish generalizability in different populations. Due to the healthy volunteer effect observed in
322 the Rotterdam Study cohort, the prevalence of cardiovascular risk factors and ASCVD incidence
323 rates during follow-up are likely somewhat lower than in real-world data setting.³⁴ Therefore, our
324 results need to be interpreted with caution when extrapolating findings to the broader population
325 accessing healthcare services.

326

327 *Conclusions*

328 NT-proBNP levels >100 pg/mL identify individuals at the highest ASCVD risk among low- to
329 intermediate risk populations who are likely to benefit from statin treatment at acceptable NNT_{5y}
330 and NNS_{5y}. Almost 60% of the general population free of ASCVD and diabetes was eligible for
331 at least one of three statin RCT, and one out four had NT-proBNP levels >100 pg/mL.

Acknowledgments

The dedication, commitment, and contribution of inhabitants, general practitioners, and pharmacists to the Rotterdam Study are gratefully acknowledged.

Sources of Funding

The Rotterdam Study is supported by the Erasmus MC and Erasmus University Rotterdam; the Netherlands Organization for Scientific Research (NWO); the Netherlands Organization for Health Research and Development (ZonMw); the Research Institute for Diseases in the Elderly; the Netherlands Genomics Initiative; the Ministry of Education, Culture, and Science; the Ministry of Health, Welfare, and Sports; the European Commission (DG XII); and the Municipality of Rotterdam. Dr Pavlović was supported by Erasmus Mundus Western Balkans, a project funded by the European Commission. The funders had no role in the design and conduct of the study; collection, management, analysis, and interpretation of the data; preparation, review, or approval of the manuscript; and decision to submit the manuscript for publication.

Disclosures

All authors have completed and submitted the ICMJE Form for Disclosure of Potential Conflicts of Interest. Dr Leening reports receiving speaker fees from Sanofi; Daiichi Sankyo; and Novartis; and served on an advisory board for Boehringer Ingelheim. No other disclosures were reported.

354 **Supplemental Material**

355 Supplemental Methods

356 Tables S1-S6

357 Figures S1-S3

358 References 35-36

References

1. Grundy SM, Stone NJ, Bailey AL, Beam C, Birtcher KK, Blumenthal RS, Braun LT, de Ferranti S, Faiella-Tommasino J, Forman DE. 2018 AHA/ACC/AACVPR/AAPA/ABC/ACPM/ADA/AGS/APhA/ASPC/NLA/PCNA guideline on the management of blood cholesterol: a report of the American College of Cardiology/American Heart Association Task Force on Clinical Practice Guidelines. *J Am Coll Cardiol.* 2019;73:e285-e350.
2. Visseren FLJ, Mach F, Smulders YM, Carballo D, Koskinas KC, Bäck M, Benetos A, Biffi A, Boavida J-M, Capodanno D, et al. 2021 ESC Guidelines on cardiovascular disease prevention in clinical practice: Developed by the Task Force for cardiovascular disease prevention in clinical practice with representatives of the European Society of Cardiology and 12 medical societies With the special contribution of the European Association of Preventive Cardiology (EAPC). *Eur Heart J.* 2021;42:3227-3337. doi: 10.1093/eurheartj/ehab484
3. Cholesterol Treatment Trialists' (CTT) Collaborators. The Effects of Lowering LDL Cholesterol with Statin Therapy in People at Low Risk of Vascular Disease: Meta-analysis of Individual Data from 27 Randomised Trials. *Lancet.* 2012;380:581-590. doi: 10.1016/S0140-6736(12)60367-5
4. Taylor F, Huffman MD, Macedo AF, Moore TH, Burke M, Davey Smith G, Ward K, Ebrahim S. Statins for the primary prevention of cardiovascular disease. *Cochrane Database Syst Rev.* 2013;1:CD004816.
5. Nakamura H, Arakawa K, Itakura H, Kitabatake A, Goto Y, Toyota T, Nakaya N, Nishimoto S, Muranaka M, Yamamoto A, et al. Primary prevention of cardiovascular

- 382 disease with pravastatin in Japan (MEGA Study): a prospective randomised controlled
383 trial. *Lancet*. 2006;368:1155-1163. doi: 10.1016/s0140-6736(06)69472-5
- 384 6. Ridker PM, Danielson E, Fonseca FA, Genest J, Gotto Jr. AM, Kastelein JJ, Koenig W,
385 Libby P, Lorenzatti AJ, MacFadyen JG, et al. Rosuvastatin to prevent vascular events in
386 men and women with elevated C-reactive protein. *N Engl J Med*. 2008;359:2195-2207.
- 387 7. Yusuf S, Bosch J, Dagenais G, Zhu J, Xavier D, Liu L, Pais P, Lopez-Jaramillo P, Leiter
388 LA, Dans A, et al. Cholesterol Lowering in Intermediate-Risk Persons without
389 Cardiovascular Disease. *N Engl J Med*. 2016;374:2021-2031. doi:
390 10.1056/NEJMoa1600176
- 391 8. Bosch J, Lonn EM, Jung H, Zhu J, Liu L, Lopez-Jaramillo P, Pais P, Xavier D, Diaz R,
392 Dagenais G, et al. Lowering cholesterol, blood pressure, or both to prevent cardiovascular
393 events: results of 8.7 years of follow-up of Heart Outcomes Evaluation Prevention
394 (HOPE)-3 study participants. *Eur Heart J*. 2021;42:2995-3007. doi:
395 10.1093/eurheartj/ehab225
- 396 9. Pavlović J, Greenland P, Deckers JW, Kavousi M, Hofman A, Ikram MA, Franco OH,
397 Leening MJ. Assessing gaps in cholesterol treatment guidelines for primary prevention of
398 cardiovascular disease based on available randomised clinical trial evidence: The
399 Rotterdam Study. *Eur J Prev Cardiol*. 2018;25:420-431. doi:
400 10.1177/2047487317743352
- 401 10. Ioannidis JP. More than a billion people taking statins? Potential implications of the new
402 cardiovascular guidelines. *JAMA*. 2014;311:463-464.
- 403 11. Abramson JD, Redberg RF. The opinion pages: Don't give more patients statins. In: *The*
404 *New York Times*. 2013:A33.

- 405 12. Navar AM. Questioning the Benefit of Statins for Low-Risk Populations—Medical
406 Misinformation or Scientific Evidence?—Reply. *JAMA Cardiology*. 2019. doi:
407 10.1001/jamacardio.2019.5123
- 408 13. Kavousi M, Elias-Smale S, Rutten JHW, Leening MJG, Vliegenthart R, Verwoert GC,
409 Krestin GP, Oudkerk M, de Maat MPM, Leebeek FWG. Evaluation of Newer Risk
410 Markers for Coronary Heart Disease Risk Classification: A Cohort Study. *Ann Intern*
411 *Med*. 2012;156:438-444. doi: 10.7326/0003-4819-156-6-201203200-00006
- 412 14. Lemos JAd, Ayers CR, Levine BD, deFilippi CR, Wang TJ, Hundley WG, Berry JD,
413 Seliger SL, McGuire DK, Ouyang P, et al. Multimodality Strategy for Cardiovascular
414 Risk Assessment. *Circulation*. 2017;135:2119-2132. doi:
415 doi:10.1161/CIRCULATIONAHA.117.027272
- 416 15. Ledwidge MT, O'Connell E, Gallagher J, Tilson L, James S, Voon V, Bermingham M,
417 Tallon E, Watson C, O'Hanlon R. Cost-effectiveness of natriuretic peptide-based
418 screening and collaborative care: a report from the STOP-HF (St Vincent's Screening TO
419 Prevent Heart Failure) study. *Eur J Heart Failure*. 2015;17:672-679.
- 420 16. Ikram MA, Kieboom BCT, Brouwer WP, Brusselle G, Chaker L, Ghanbari M,
421 Goedegebure A, Ikram MK, Kavousi M, de Kneegt RJ, et al. The Rotterdam Study.
422 Design update and major findings between 2020 and 2024. *Eur J Epidemiol*. 2024.
- 423 17. Rutten JHW, Mattace-Raso FUS, Steyerberg EW, Lindemans J, Hofman A, Wieberdink
424 RG, Breteler MMB, Witteman JCM, Meiracker AHvd. Amino-Terminal Pro-B-Type
425 Natriuretic Peptide Improves Cardiovascular and Cerebrovascular Risk Prediction in the
426 Population. *Hypertension*. 2010;55:785-791. doi:
427 doi:10.1161/HYPERTENSIONAHA.109.143313

- 428 18. Yeo KT, Wu AH, Apple FS, Kroll MH, Christenson RH, Lewandrowski KB, Sedor FA,
429 Butch AW. Multicenter evaluation of the Roche NT-proBNP assay and comparison to the
430 Biosite Triage BNP assay. *Clin Chim Acta*. 2003;338:107-115. doi:
431 10.1016/j.cccn.2003.08.016
- 432 19. Leening MJG, Kavousi M, Heeringa J, van Rooij FJ, Verkroost-van Heemst J, Deckers
433 JW, Mattace-Raso FU, Ziere G, Hofman A, Stricker BH, et al. Methods of Data
434 Collection and Definitions of Cardiac Outcomes in the Rotterdam Study. *Eur J*
435 *Epidemiol*. 2012;27:173-185.
- 436 20. Berghout BP, Bos D, Koudstaal PJ, Ikram MA, Ikram MK. Risk of recurrent stroke in
437 Rotterdam between 1990 and 2020: a population-based cohort study. *Lancet Reg Health*
438 *Eur*. 2023;30:100651.
- 439 21. Nakamura H. Design and baseline characteristics of a study of primary prevention of
440 coronary events with pravastatin among Japanese with mildly elevated cholesterol levels.
441 *Circ J*. 2004;68:860-867.
- 442 22. Bos MJ, van Rijn MJ, Wittteman JC, Hofman A, Koudstaal PJ, Breteler MM. Incidence
443 and Prognosis of Transient Neurological Attacks. *JAMA*. 2007;298:2877-2885. doi:
444 10.1001/jama.298.24.2877
- 445 23. Maitland-van der Zee AH, Klungel OH, Stricker BHC, van der Kuip DA, Wittteman JC,
446 Hofman A, Leufkens HG, de Boer A. Repeated Nitrate Prescriptions as a Potential
447 Marker for Angina Pectoris. A Comparison with Medical Information from the
448 Rotterdam Study. *Pharm World Sci*. 2003;25:70-72. doi: 10.1023/a:1023292830670
- 449 24. Januzzi JL, van Kimmenade R, Lainchbury J, Bayes-Genis A, Ordonez-Llanos J,
450 Santalo-Bel M, Pinto YM, Richards M. NT-proBNP testing for diagnosis and short-term

- prognosis in acute destabilized heart failure: an international pooled analysis of 1256 patients: the International Collaborative of NT-proBNP Study. *Eur Heart J.* 2006;27:330-337. doi: 10.1093/eurheartj/ehi631
25. Ndumele CE, Matsushita K, Sang Y, Lazo M, Agarwal SK, Nambi V, Deswal A, Blumenthal RS, Ballantyne CM, Coresh J, et al. N-Terminal Pro-Brain Natriuretic Peptide and Heart Failure Risk Among Individuals With and Without Obesity: The Atherosclerosis Risk in Communities (ARIC) Study. *Circulation.* 2016;133:631-638.
26. Collins R, Reith C, Emberson J, Armitage J, Baigent C, Blackwell L, Blumenthal R, Danesh J, Smith GD, DeMets D, et al. Interpretation of the Evidence for the Efficacy and Safety of Statin Therapy. *Lancet.* 2016;388:2532-2561. doi: 10.1016/S0140-6736(16)31357-5
27. Dempster AP, Laird NM, Rubin DB. Maximum Likelihood From Incomplete Data via the EM Algorithm. *Journal of the Royal Statistical Society Series B (Methodological).* 1977;39:1-38. doi: 10.1111/j.2517-6161.1977.tb01600.x
28. Mortensen MB, Tybjaerg-Hansen A, Nordestgaard BG. Statin Eligibility for Primary Prevention of Cardiovascular Disease According to 2021 European Prevention Guidelines Compared With Other International Guidelines. *JAMA Cardiol.* 2022;7:836-843.
29. Elliott MH, Skydel JJ, Dhruva SS, Ross JS, Wallach JD. Characteristics and Reporting of Number Needed to Treat, Number Needed to Harm, and Absolute Risk Reduction in Controlled Clinical Trials, 2001-2019. *JAMA Intern Med.* 2021;181:282-284.
30. Saver JL, Lewis RJ. Number Needed to Treat: Conveying the Likelihood of a Therapeutic Effect. *JAMA.* 2019;321:798-799. doi: 10.1001/jama.2018.21971

31. Halvorsen S, Mehilli J, Cassese S, Hall TS, Abdelhamid M, Barbato E, De Hert S, de Laval I, Geisler T, Hinterbuchner L, et al. 2022 ESC Guidelines on cardiovascular assessment and management of patients undergoing non-cardiac surgery: Developed by the task force for cardiovascular assessment and management of patients undergoing non-cardiac surgery of the European Society of Cardiology (ESC) Endorsed by the European Society of Anaesthesiology and Intensive Care (ESAIC). *Eur Heart J*. 2022;43:3826-3924. doi: 10.1093/eurheartj/ehac270
32. Redfield MM, Rodeheffer RJ, Jacobsen SJ, Mahoney DW, Bailey KR, Burnett JC. Plasma brain natriuretic peptide concentration: impact of age and gender. *J Am Coll Cardiol*. 2002;40:976-982.
33. Bernstein LH, Zions MY, Alam ME, Haq SA, Heitner JF, Zarich S, Seamonds B, Berger S. What is the best approximation of reference normal for NT-proBNP? Clinical levels for enhanced assessment of NT-proBNP (CLEAN). *Journal of Medical Laboratory and Diagnosis*. 2011;2:16-21.
34. Leening MJG, Heeringa J, Deckers JW, Franco OH, Hofman A, Witteman JC, Stricker BH. Healthy Volunteer Effect and Cardiovascular Risk. *Epidemiology*. 2014;25:470-471. doi: 10.1097/EDE.0000000000000091
35. Friedewald Levy R. I. FDS, William T. Estimation of the concentration of low-density lipoprotein cholesterol in plasma, without use of the preparative ultracentrifuge. *Clin Chem*. 1972;18:499-502.
36. Expert Panel. Executive Summary of The Third Report of The National Cholesterol Education Program (NCEP) Expert Panel on Detection, Evaluation, And Treatment of High Blood Cholesterol In Adults (Adult Treatment Panel III). Expert Panel on

497 Detection, Evaluation and Trea. *JAMA*. 2001;285:2486-2497. doi:
498 10.1001/jama.285.19.2486
499 37. Graham I, Atar D, Borch-Johnsen K, Boysen G, Burell G, Cifkova R, Dallongeville J, De
500 Backer G, Ebrahim S, Gjelsvik B, et al. European guidelines on cardiovascular disease
501 prevention in clinical practice: executive summary: Fourth Joint Task Force of the
502 European Society of Cardiology and Other Societies on Cardiovascular Disease
503 Prevention in Clinical Practice (Constituted by r. *Eur Heart J*. 2007;28:2375-2414.
504
505
506

507 **Table 1. Overview of the clinical trial characteristics**

RCT characteristics	MEGA, 2006	JUPITER, 2008	HOPE-3, 2016
Statin	Pravastatin 10-20 mg	Rosuvastatin 20 mg	Rosuvastatin 10 mg
Sample size	7,832	17,802	12,705
Mean follow-up, y	5.3	1.9*	5.6*
Age, y	40-70	50-97	≥55
Major entry criteria[†]			
Cholesterol (mg/dL)	Total 200-270	LDL <130	None
Other major criteria	Postmenopausal women	Men ≥50 y, women ≥60 y; C-reactive protein ≥2 mg/L	Men ≥55 y, women ≥65 y; ≥1 additional risk factor
Outcomes			
Definition	- Composite of major CHD, sudden cardiac death, angina, and revascularization; - Composite of all CHD, stroke, and CVD death.	- Composite of non-fatal MI, non-fatal stroke, revascularization, hospital admission for angina, and confirmed CVD death.	- Composite of CVD death, non-fatal MI, and non-fatal stroke; - Composite of CVD death, resuscitated cardiac arrest, non-fatal MI, non-fatal stroke, heart failure, and revascularizations.
Control events (event rate per 1000 pys)	101/3966 (5.0); 172/3966 (8.5)	251/8901 (13.6)	304/6344 (9.8 [‡]); 363/6344 (11.5 [‡])
Treatment events (event rate per 1000 pys)	66/3866 (3.3); 125/3866 (6.4)	142/8901 (7.7)	235/6361 (7.7 [‡]); 277/6361 (9.0 [‡])
Treatment effect, HR	0.67 (95%CI: 0.49-0.91; P=0.01); 0.74 (95%CI: 0.59-0.94; P=0.01)	0.56 (95%CI: 0.46-0.69; P<0.001)	0.76 (95%CI: 0.64–0.91; P=0.002); 0.75 (95%CI: 0.64–0.88; P<0.001)
NNT			
Per outcome definition	119; 91	25 [§]	91; 73

508 * Median.

509 † Major criteria presented in the table were simplified for didactic purposes. Detailed inclusion and exclusion criteria per RCT, and
510 data availability are presented in Table S1.

511 ‡ Event rates for treatment and control group were only provided for the follow-up period of 8.7 years (i.e., including 3.1 years of post
512 RCT follow-up).⁵

513 § As JUPITER trial ended earlier, the trial authors calculated NNT over an average period of 5 years to be 25.⁶

514

515 Abbreviations: CHD, coronary heart disease; CVD, cardiovascular disease; HOPE-3, Heart Outcomes Prevention Evaluation-3; HR,
516 hazard ratio; JUPITER, Justification for the Use of Statins in Prevention: Intervention Trial Evaluating Rosuvastatin; LDL, low-
517 density lipoprotein; MEGA, The Management of Elevated Cholesterol in the Primary Prevention Group of Adult Japanese; MI,
518 myocardial infarction; NNT, number needed to treat; RCT, randomized controlled trial.

519 **Table 2. Population characteristics**

	Total population (n=5434)	MEGA eligible (n=1896)	JUPITER eligible (n=567)	HOPE-3 eligible (n=1287)
Age, y	61.6 (56.7-69.1)	60.8 (57.2-64.5)	67.0 (61.8-75.1)	65.6 (61.2-72.4)
Women	3199 (58.9)	1128 (59.5)	281 (49.6)	620 (48.2)
Total cholesterol, mg/dL	220 (197-242)	205 (181-230)	191 (174-204)	239 (229-251)
HDL cholesterol, mg/dL	54 (45-66)	51 (44-62)	51 (42-64)	55 (46-67)
LDL cholesterol, mg/dL	140 (119-159)	126 (108-149)	113 (102-123)	157 (146-169)
Triglycerides, mg/dL	109 (83-149)	106 (83-144)	104 (81-146)	120 (91-160)
Systolic blood pressure, mmHg	134 (122-147)	133 (122-146)	138 (126-150)	132 (122-143)
Diastolic blood pressure, mmHg	78 (71-85)	79 (72-86)	77 (70-85)	76 (69-83)
Current smoking	1208 (22.2)	468 (24.7)	149 (26.3)	210 (16.3)
Body mass index, kg/m ²	26.3 (24.0-29.0)	26.5 (24.2-29.0)	27.1 (24.5-30.5)	26.6 (24.3-29.3)
Waist-hip-ratio, ratio	0.88 (0.82-0.95)	0.88 (0.82-0.94)	0.92 (0.86-0.98)	0.93 (0.88-0.97)
Glucose, mg/dL	97 (92-104)	99 (92-106)	99 (94-106)	97 (92-104)
CRP, mg/L	1.4 (0.6-3.2)	1.2 (0.5-2.6)	4.1 (2.8-6.9)	1.6 (0.6-3.6)
eGFR, mL/min/1.73m ²	83 (72-94)	84 (75-94)	77 (67-87)	78 (68-89)
Blood pressure lowering medication use	201 (3.7)	49 (2.6)	34 (6.0)	56 (4.4)
NT-proBNP, pg/mL	60 (33-110)	50 (29-89)	79 (42-152)	64 (35-116)
NT-proBNP ≤50 pg/mL	2296 (42.3)	946 (49.9)	183 (32.3)	519 (40.3)
NT-proBNP 50-100 pg/mL	1589 (29.2)	539 (28.4)	151 (26.6)	375 (29.1)
NT-proBNP >100 pg/mL	1549 (28.5)	411 (21.7)	233 (41.1)	393 (30.6)

520

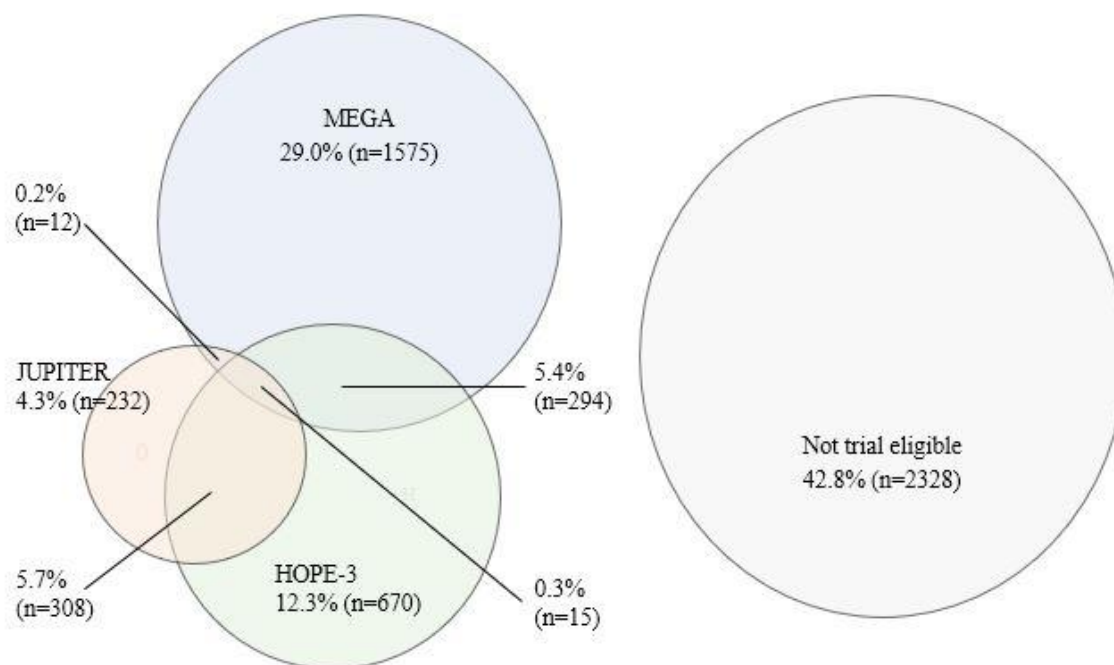
521 Values are medians (IQR) or counts (%).

522 To convert total, LDL, and HDL cholesterol from mg/dL to SI (mmol/L) divide by 38.7, and for triglycerides by 88.6; glucose from
523 mg/dL to SI (mmol/L) divide by 18; CRP from mg/L to SI (nmol/L) multiply by 9.5; NT-proBNP from pg/mL to SI (pmol/L) multiply
524 by 0.12.

525

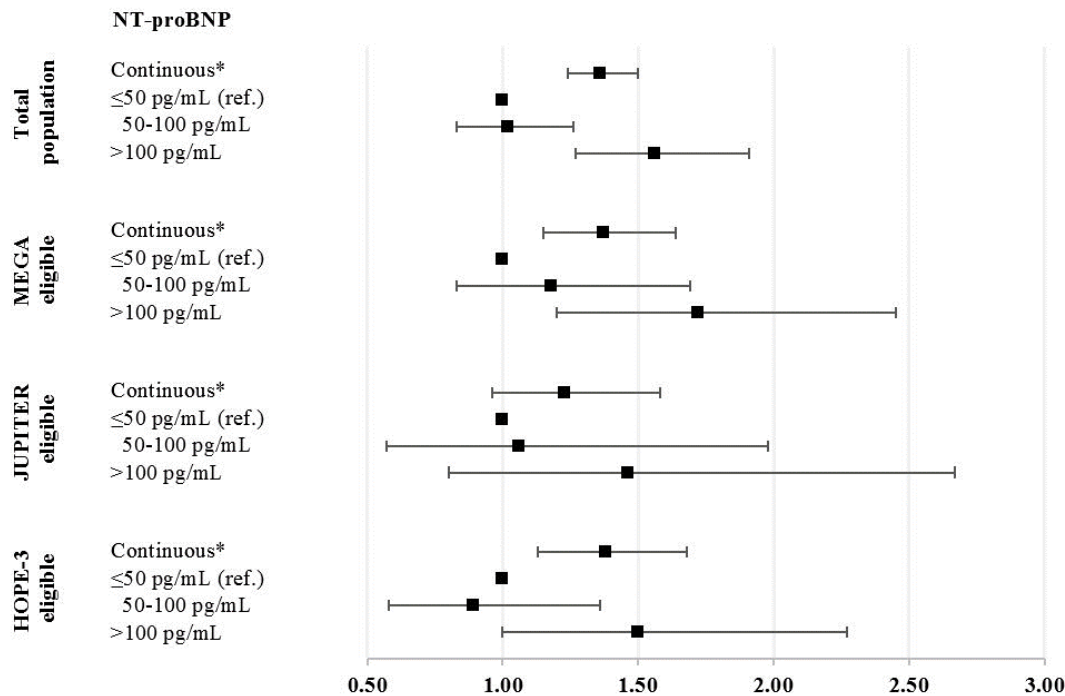
526 Abbreviations: CRP, C-reactive protein; eGFR, estimated glomerular filtration rate; HDL, high-density lipoprotein; HOPE-3, Heart
527 Outcomes Prevention Evaluation-3; JUPITER, Justification for the Use of Statins in Prevention: Intervention Trial Evaluating
528 Rosuvastatin; LDL, low-density lipoprotein; MEGA, The Management of Elevated Cholesterol in the Primary Prevention Group of
529 Adult Japanese; NT-proBNP, N-terminal pro-B-type natriuretic peptide.

530 **Figure 1. General population eligibility for statin trials in primary prevention of ASCVD**
 531 **targeting low- and intermediate risk individuals**



532
 533 Abbreviations: ASCVD, atherosclerotic cardiovascular disease; HOPE-3, Heart Outcomes
 534 Prevention Evaluation-3; JUPITER, Justification for the Use of Statins in Prevention:
 535 Intervention Trial Evaluating Rosuvastatin; MEGA, The Management of Elevated Cholesterol in
 536 the Primary Prevention Group of Adult Japanese.

Figure 2. Adjusted hazard ratios for incident ASCVD

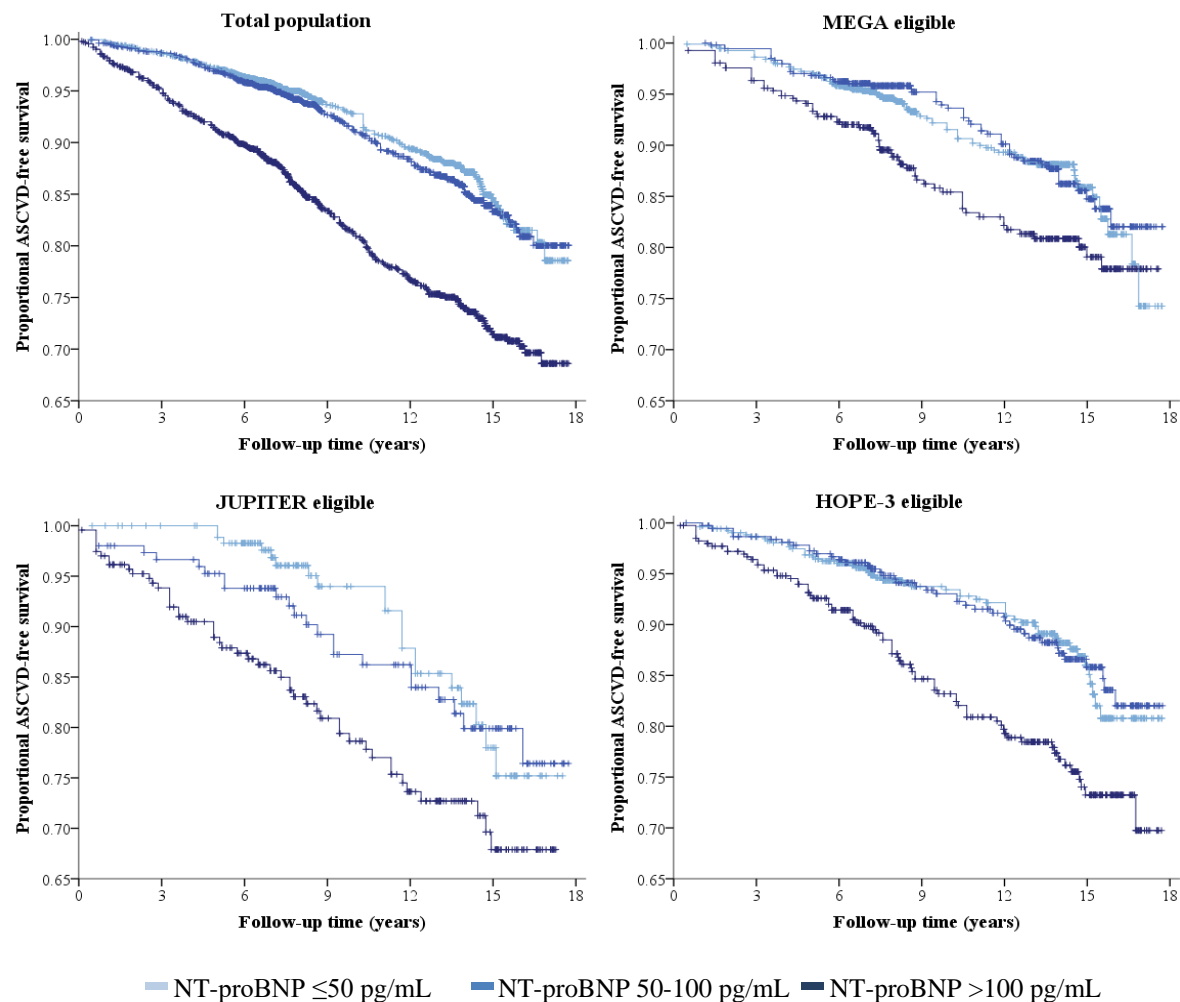


* Natural-log-transformed NT-proBNP values.

Adjusted hazard ratios (model 2) for ASCVD with 95% confidence intervals per natural-log-transformed NT-proBNP values, comparing two NT-proBNP categories with NT-proBNP ≤50 pg/mL (reference group) in total population and per trial eligible subpopulations.

Abbreviations: ASCVD, atherosclerotic cardiovascular disease; HDL, high-density lipoprotein; HOPE-3, Heart Outcomes Prevention Evaluation-3; JUPITER, Justification for the Use of Statins in Prevention: Intervention Trial Evaluating Rosuvastatin; MEGA, The Management of Elevated Cholesterol in the Primary Prevention Group of Adult Japanese; NT-proBNP, N-terminal pro-B-type natriuretic peptide.

Figure 3. ASCVD free survival curves by NT-proBNP level and trial eligibility



Abbreviations: ASCVD, atherosclerotic cardiovascular disease; HOPE-3, Heart Outcomes

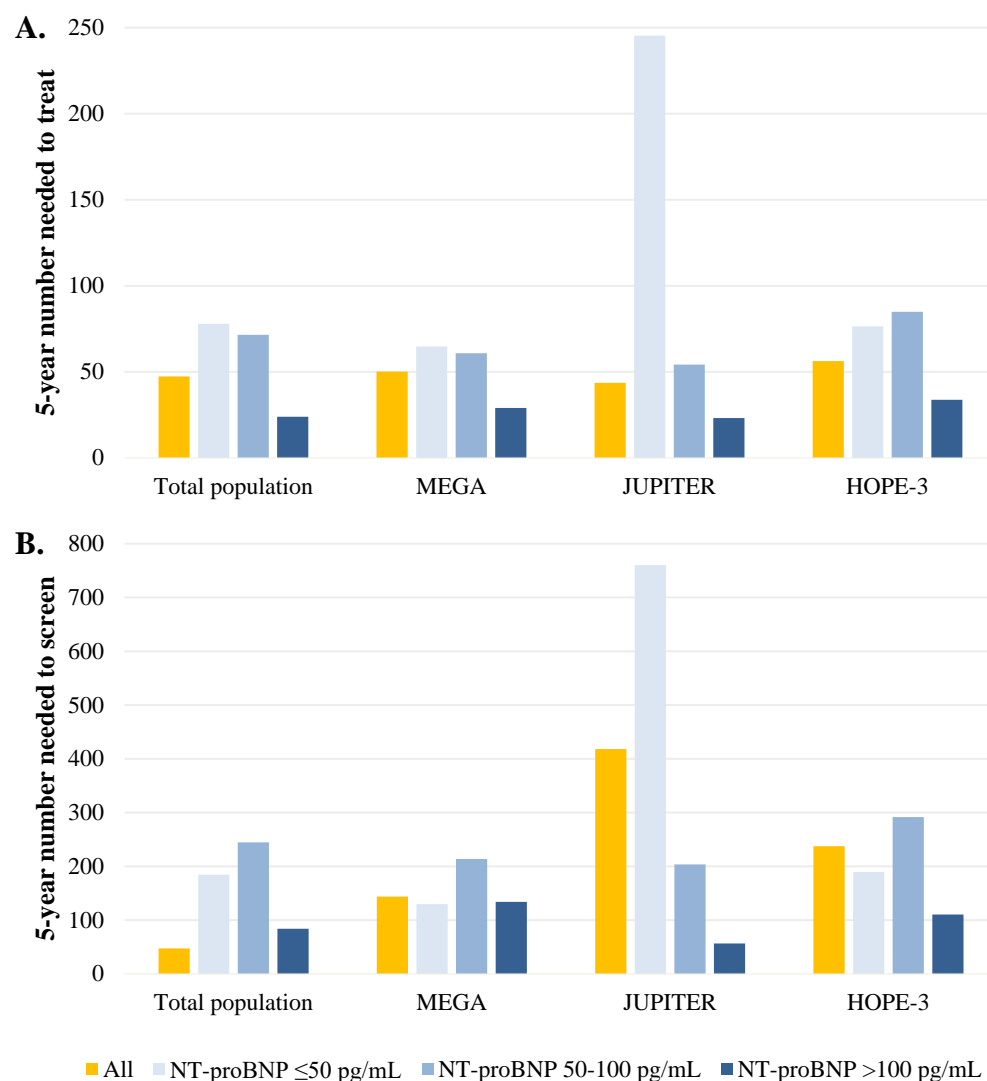
Prevention Evaluation-3; JUPITER, Justification for the Use of Statins in Prevention:

Intervention Trial Evaluating Rosuvastatin; MEGA, The Management of Elevated Cholesterol in

the Primary Prevention Group of Adult Japanese; NT-proBNP, N-terminal pro-B-type natriuretic

peptide.

Figure 4. Numbers needed to treat and screen for five years to avoid a single ASCVD event with high-intensity statins



Panel A, Numbers needed to treat for five years to avoid a single ASCVD event with high-intensity statins, by NT-proBNP level. Panel B, Numbers needed to screen for five years to avoid a single ASCVD event with high-intensity statins, by NT-proBNP level.

Abbreviations: ASCVD, atherosclerotic cardiovascular disease; HOPE-3, Heart Outcomes Prevention Evaluation-3; JUPITER, Justification for the Use of Statins in Prevention:

569 Intervention Trial Evaluating Rosuvastatin; MEGA, The Management of Elevated Cholesterol in
570 the Primary Prevention Group of Adult Japanese; NT-proBNP, N-terminal pro-B-type natriuretic
571 peptide.
572