

Socioeconomic Inequalities in Non-Adherence to Antihypertensive Medication in Peru

Claudio Intimayta-Escalante⁽¹⁾, Lynn A. Quintana-García⁽²⁾

1. Facultad de Medicina de San Fernando, Universidad Nacional Mayor de San Marcos, Lima, Peru.

2. Facultad de Medicina Humana, Universidad Ricardo Palma, Lima, Peru.

ABSTRACT

Introduction: In Peru, adherence to antihypertensive treatment ranges from 55.5% to 46.6%. Adherence decreases under adverse socioeconomic conditions. Therefore, the aim of this research was to evaluate the socioeconomic inequalities in non-adherence to antihypertensive medication in Peru. **Methods:** A cross-sectional study was conducted through the analysis of data from the Demographic and Family Health Survey carried out in Peru between 2013 and 2023. We addressed the socioeconomic conditions of hypertensive Peruvian adults, including sex, age group, educational level, area or place of residence, and health insurance. These conditions were evaluated as sources of inequality in non-adherence to antihypertensive medication at a general level using the Concentration Index (CI) or Erreygers' Correction Index (ECI) among adults over 29 years of age. **Results:** In the 15,624 hypertensive adults over 29 years old included in the study, the 86.63% had adherence to their antihypertensive medication. However, the inequality in non-adherence to medication was considerable (CI: -0.259; 95%CI: -0.385 to -0.132; $p=0.001$). This inequality was greater among those aged 30 to 49 years (CI: -0.064; 95%CI: -0.121 to -0.008; $p=0.01-0.2$), those living in rural areas (CI: -0.484; 95%CI: -0.537 to -0.430; $p<0.001$) or outside the capital (CI: -0.495; 95%CI: -0.569 to -0.422; $p<0.001$), and those with no education (CI: -0.156; 95%CI: -0.201 to -0.112; $p<0.001$) or only primary education (CI: -0.323; 95%CI: -0.386 to -0.260; $p<0.001$). In contrast, hypertensive adults with a university education had a positive CI (CI: 0.257; 95%CI: 0.199 to 0.316; $p<0.001$). **Conclusion:** Hypertensive Peruvian adults residing in rural areas or outside the capital, and those with a low educational level, exhibited greater inequality in adherence to antihypertensive medication.

Keywords: Socioeconomic Health Disparities; Health Inequality Monitoring; Health Inequities; Hypertension; Treatment Adherence and Compliance; Antihypertensive Agents; Peru.

INTRODUCTION

The World Health Organization (WHO) estimates that approximately 1.28 billion adults worldwide, aged between 30 and 79 years, suffer from hypertension (1). Additionally, out of every three adults with hypertension, two are from middle- and low-income countries. Only 42% of hypertensive adults receive medical treatment, while 21% have their blood pressure under control and 50% do not adhere to therapeutic guidelines (2), which can lead to the development of severe complications such as myocardial infarctions, cerebrovascular accidents, renal failure, and other health issues (3).

WHO provides a model with five dimensions that influence how well patients stick to their treatment: economic factors, healthcare system elements, treatment-related factors, disease-related factors, and personal factors (4,5). By 2025, it is projected that emerging countries in Latin America will have 1.56 billion cases of hypertension, coinciding with the World Health Assembly's goal of reducing uncontrolled blood pressure by 25% (6).

In Peru, adherence to antihypertensive treatment affects quality of life, work productivity, and healthcare expenses (9). This lack of adherence highlights the necessity of introducing tailored health education initiatives and individualized support services to encourage proper treatment adherence (10). Additionally, factors such as lack of health knowledge, non-compliance with

therapeutic guidelines, and medication costs contribute to this lack of adherence. Other influencing factors include aging, education, income, area of residence, healthcare coverage, and psychosocial conditions (11,12).

The hypertension management guidelines in Peru overlook patient adherence to treatment, worsening the task of guaranteeing efficient hypertension management and leading to less than optimal health results, revealing a notable flaw in the healthcare system (13,14). Neglecting sociodemographic variations in medication access and overlooking gaps in adherence awareness can severely impede treatment effectiveness, resulting in less than optimal health outcomes and difficulties in achieving successful hypertension management (15,16). Thus, the objective of this study is to assess socioeconomic inequalities in non-adherence to antihypertensive medication in Peru.

METHODS

Study Design

A cross-sectional study was conducted with an analysis of Demographic and Family Health Survey from Peru (or ENDES, in Spanish acronym). Peru is a country in Latin America with almost 32 million people (17). This study analyzed hypertensive adults who responded to the assessment on their antihypertensive medication adherence and had their blood pressure measured in the ENDES between 2013 and 2022.

Variables Assessed

It was asked of hypertensive adults, "Did you take the medications as your doctor prescribed?". This allowed the evaluation of medication adherence. Additionally, other variables were evaluated, including sex (male or female), age group (30-49, 50-64, and 65 or older), education level (without education, elementary, high school, or university), wealth quintile (first, second, third, fourth, and fifth quintile), area (rural or urban) or place of residence (living in or outside the capital), and health insurance affiliation (yes or no).

Control of Blood Pressure

Among the hypertensive adults, systolic blood pressure (SBP) and diastolic blood pressure (DBP) were measured. In this way, considering the blood pressure ranges stipulated by clinical practice guidelines for hypertension management (18). We considered SBP values below 130mmHg and DBP values below 80mmHg to be healthy. Thus, we conducted an evaluation of medication adherence in hypertensive adults and the range of SBP/DBP they maintained. Additionally, we addressed the differences that exist according to the wealth quintile to evaluate inequality in medication adherence based on blood pressure.

Statistical Analysis

The statistical analysis was conducted using R Studio version 4.2.2 (<https://cran.r-project.org/>), including the complex sample design inherent to ENDES. Categorical variables were described using frequencies and percentages, while numerical variables were presented as means with their respective 95% confidence intervals weighted by the design effect. Differences in medication intake among adults across different study variables were assessed using the Rao-Scott test. Thus, the association between sociodemographic characteristics and medication intake was assessed using Poisson regression models with robust variances to estimate both the crude Prevalence Ratio (PRc) and the adjusted Prevalence (aPR), accounting for all variables.

Inequality Analysis

Inequality analysis was conducted using concentration index to assess the medication intake based on socioeconomic status, ranging from the fifth quintile to the first quintile. So, the concentration index (CI) was found by guessing the area above or below the curve. This way, conditions that generate clustering above the curve are linked to inequality caused by poverty (19). Additionally, Erreygers' Concentration Index (ECI) was employed to allow for a more equitable estimation by considering the extremes of the distribution of the evaluated health condition (20). A map of Peru was created to show where hypertensive adults are located, their medication intake, and the ECI values in different regions.

Ethical Aspects

Given that the ENDES data collection process involved participants' informed consent, no ethical committee evaluation was necessary. Moreover, data obtained from the INEI platform are anonymized and securely stored (<https://proyectos.inei.gob.pe/microdatos/>).

RESULTS

Of the 15,624 Peruvian adults aged over 29 years with arterial hypertension included in the study, 62.95% (95%CI: 61.49 to 64.39) were female, with a mean age of 64.44 years (95%CI: 63.97 to 64.85). Among the respondents, nearly half were aged 65 or older (51.83%, 95%CI: 50.25 to 53.39), had completed secondary education or higher (56.48%, 95%CI: 55.09 to 57.86), and belonged to the first two quintiles of wealth (52.61%, 95%CI: 51.01 to 54.22). Regarding place of residence, 43.38% (95%CI: 41.77 to 45.00) lived in the capital, while 84.11% (95%CI: 83.16 to 85.00) resided in urban areas. Concerning health insurance affiliation, 87.77% (95%CI: 86.55 to 88.90) were affiliated with some form of insurance. Meanwhile, 86.63% (95%CI: 85.46 to 87.72) adhered to the intake of antihypertensive medications as prescribed by their doctors.

Certain sociodemographic characteristics, such as age group, educational level, wealth quintile, and place of residence, mediated statistically significant differences ($p < 0.050$) in the proportion of hypertensive adults taking medication for their condition (Table 1). Specifically, it was identified that hypertensive adults living in rural areas had a 5.61% higher prevalence of adherence to medication intake (PRa: 1.056; 95% CI: 1.007 to 1.108; $p = 0.025$) compared to hypertensive adults in urban areas. Adults in the third, fourth, and fifth wealth quintiles, on the other hand, were less likely to take their antihypertensive medications (Table 2). This was because 4.76%, 6.29%, and 12.07% of those in those groups did not take their medications as prescribed. Also, compared to hypertensive adults aged 65 or older, those aged 50 to 64 years and 30 to 49 years had rates of 5.51% (PRa: 0.945; 95%CI: 0.914 to 0.976; $p = 0.001$) and 6.85% (PRa: 0.931; 95%CI: 0.897 to 0.968; $p = 0.001$) not taking their blood pressure medicines as prescribed.

A big difference was seen between adults with high blood pressure who didn't take their medicine as prescribed (CI: -0.259; 95%CI: -0.385 to -0.132; $p < 0.001$) and those who did take their antihypertensive medicine as prescribed (CI: 0.038; 95%CI: 0.012 to 0.063; $p = 0.004$) (Figure 1A). Also, among hypertensive adults who were taking their medications, there was more inequality among those with only elementary education (CI: -0.287; 95%CI: -0.373 to -0.200; $p < 0.001$), living in rural areas (CI: -0.853; 95%CI: -1.031 to -0.675; $p < 0.001$), or not living in the capital (CI: -0.441; 95%CI: -0.631 to -0.251; $p < 0.001$), compared to those with a university education (CI: 0.257; 95%CI: 0.199 to 0.316; $p < 0.001$). Also, among adults

with high blood pressure who didn't take their medicine as prescribed, those with only primary education (CI: -0.279; 95% CI: -0.538 to -0.019; $p=0.036$) and living in rural areas (CI: -0.976; 95%CI: -1.426 to -0.527; $p<0.001$) or outside the capital (CI: -0.402; 95%CI: -0.596 to -0.207; $p<0.001$) were more unequal (Figure 2A) than those with a university education (CI: 0.508; 95%CI: 0.257 to 0.758; $p<0.001$).

In evaluating inequality with the Erreygers Concentration Index (ECI), it was identified that among hypertensive adults with adherence to medication intake, women (ECI: -0.085; 95% CI: -0.118 to -0.052; $p<0.001$), those aged 30 to 49 years (ECI: -0.082; 95%CI: -0.103 to -0.061; $p<0.001$) and 65 or older (ECI: 0.087; 95% CI: 0.052 to 0.122; $p<0.001$), without education (ECI: -0.152; 95%CI: -0.171 to -0.133; $p<0.001$) or only elementary education (ECI: -0.329; 95%CI: -0.354 to -0.304; $p<0.001$), living in rural areas (ECI: -0.457; 95%CI: -0.483 to -0.431; $p<0.001$) or regions outside the capital (ECI: -0.518; 95%CI: -0.549 to -0.486; $p<0.001$) exhibited greater inequality. Also, among adults with high blood pressure who didn't take their medicine as prescribed, those aged 30 to 49 (ECI: -0.064; 95%CI: -0.121 to -0.008; $p=0.012$), without education (ECI: -0.156; 95%CI: -0.201 to -0.112; $p<0.001$) or elementary education (ECI: -0.323; 95%CI: -0.386 to -0.260; $p<0.001$), living in rural areas (ECI: -0.484; 95%CI: -0.537 to -0.430; $p<0.001$) or outside the capital (ECI: -0.495; 95%CI: -0.569 to -0.422; $p<0.001$) showed more inequality (Figure 2B).

In the assessment of blood pressure among hypertensive Peruvian adults, an average systolic blood pressure (SBP) of 143.34 mmHg (95%CI: 142.64 to 144.07) and an average diastolic blood pressure (DBP) of 77.81 mmHg (95% CI: 77.40 to 78.23) were identified. Additionally, it was found that among hypertensive Peruvian adults, only 26.40% (95%CI: 25.09 to 27.74) fell within the optimal range for $SBP<130$ mmHg and $DBP<80$ mmHg. Within this group, 88.81% (95%CI: 87.24 to 90.21) adhered to medication intake. Conversely, 36.92% (95%CI: 35.44 to 38.43) were outside the optimal blood pressure range ($SBP>129$ mmHg/ $DBP>79$ mmHg). It was found that within this group, only 83.86% (95%CI: 81.85 to 85.68) were adherent to medication intake (Figure 1B). Also, it was found that in both cases, the wealth quintile made a big difference in the number of adults with high blood pressure who took their medicine as prescribed ($p<0.050$) (Figure 1C). When inequality was looked at, it was found that adults with high blood pressure who didn't take their medicine as prescribed and whose blood pressure readings were outside the ideal range had more inequality. This got worse as their readings moved away from the range of $DBP>79$ mmHg and toward the ideal range of $SBP<130$ mmHg (Figure 1D).

Across the 25 regions of Peru, although the frequency of hypertensive adults over 29 years old was less than 20% (Figure 3A), adherence within this group was over 70% (Figure 3B). However, regions in the Peruvian jungle and highlands exhibited

greater inequality in adherence to antihypertensive medication intake (Figure 3C). Additionally, during the evaluated period, a slight decrease in the proportion of hypertensive Peruvian adults over 29 years old was identified from 2013 (17.30%, 95%CI: 15.28 to 19.53) to 2023 (14.93%, 95%CI: 14.06 to 15.85). Although the proportion of those adhering to medication remained consistent above 80%, ranging from 83.40% (95%CI: 72.74 to 90.43) to 89.50% (95%CI: 87.26 to 91.46). Furthermore, a growing gap was evidenced in the number of hypertensive adults with non-adherence to medication intake in recent years (Figure 4A). On the other hand, when looking at the annual change in inequality among adults with high blood pressure who are taking their medications, it was found that the inequality indices got worse over time (Figure 4B).

DISCUSSION

This research assessed sociodemographic inequalities in medication intake among hypertensive adults in Peru. It was found that hypertensive adults in rural areas face greater disparities in medication intake. This is because there are few healthcare centers in rural areas, and access to antihypertensive medications is limited. In Peru, only 36% of public health centers have these medications available (21). This worsens the situation for the 23.1% of Peruvians without health insurance (22). This situation is similar to other Latin American nations, such as Brazil, where 10% of individuals with hypertension and diabetes do not have access to necessary medications for their conditions (23,24).

In this context, community health initiatives such as home monitoring, lifestyle counseling, and follow-up calls have shown efficacy in improving treatment adherence and identifying access issues to medications (25,26). However, in Peru, telemedicine faces challenges in incorporating digital interventions due to the lack of internet access, especially in rural areas like the jungle and highlands (27,28). As a result, interventions derived from this service for populations with chronic diseases are confined to urban areas (29). On the other hand, educational interventions targeting healthcare professionals and patients, combined with appointment reminders, have shown success (30,31).

Hypertensive adults with higher levels of education experience less inequality in medication intake, highlighting the vital role of education in comprehending cardio-metabolic diseases. This emphasizes the importance of education in understanding cardio-metabolic diseases (32). Individuals with a university education are better equipped to understand the significance of maintaining regulated "blood pressure levels" (33). Conversely, individuals with lower educational levels, particularly in populations with other languages and in rural areas, face greater challenges in following therapeutic guidelines (34,35). This is evident in Peruvian hospitals, where up to 35% of hypertensive adults struggle to understand health information, leading to only 15% following their treatment (36).

Among younger hypertensive Peruvian adults, lower inequality in medication adherence was observed, possibly due to the lower prevalence of formal employment among this age group (9,37). This may be because only one in four young adults in Peru has formal employment, which makes it difficult to integrate arterial hypertension treatment (9,38,39). Non-adherence to hypertension medication can lead to complications and an increased need for medication to control blood pressure (40,41). As the hypertensive population ages, they typically acquire greater knowledge about their condition and show increased treatment adherence (33,42). Integrating newly diagnosed hypertensive adults into support groups with those who have lived with the disease for longer periods could help reduce disparities in adherence to antihypertensive medications (43).

The lower occurrence of hypertension in women may clarify the variance in adherence to antihypertensive medication between men and women (44). However, it is important to consider that underreporting of hypertension in women may distort the assessment of inconsistent adherence to antihypertensive treatment. However, evidence indicates that women are at higher risk of developing hypertensive disorders in specific contexts, such as pregnancy and menopause (45-47). In the Peruvian context, there is no clinical-therapeutic approach tailored to these risks, which could lead to inadequate therapeutic regimens with insufficient antihypertensive medication, exacerbating adverse socioeconomic conditions (48-50).

Non-adherence in hypertensive patients with normal blood pressure values may stem from forgetfulness, a lack of motivation to maintain normal values, the presence of other health conditions, and perceiving the disease as not severe (51,52). Psychosocial intervention models help emphasize the benefits of treatment and provide skills for adherence, such as keeping medication in a visible place or taking it with breakfast (53). Additionally, setting shared goals between the physician and the patient has been shown to improve adherence (54).

The focus of this research is on examining differences in adherence to antihypertensive medication. However, the study has limitations due to the nature of the Demographic and Family Health Survey in Peru, which addresses hypertension or elevated blood pressure without delving into the context of diagnosis or assessment. Furthermore, the survey generally inquires whether adults take the medications prescribed by their doctors for hypertension or elevated blood pressure without evaluating the reasons, difficulties, and complications that might prevent them from adhering to their treatment properly. Similarly, it does not explore the knowledge of hypertensive adults about their disease or the importance of taking antihypertensive medication.

In conclusion, among hypertensive Peruvian adults, there are socioeconomic inequalities in adherence to medication for their condition. These inequalities are more pronounced among adults living in rural areas or outside the capital, those with

lower educational levels, or those belonging to a younger age group. This disparity has decreased in specific regions of Peru in recent years. Identifying these sources of inequality helps pinpoint areas for enhancing antihypertensive treatment strategies in Peru, aiming to provide more equitable care for adults with hypertension.

Corresponsal Author:

Claudio Intimayta-Escalante

E-mail: claudio.intimayta@unmsm.edu.pe

ORCID: <https://orcid.org/0000-0003-2552-9974>

Conflict of interests: None.

Funding: Self-funded

Acknowledgements: We thank the National Institute of Neoplastic Diseases in Peru for the development of the Demographic and Family Health Survey.

REFERENCES

1. WHO. Hypertension. 2023. Available in: <https://www.who.int/es/news-room/fact-sheets/detail/hypertension>
2. Brown MT, Bussell JK. Medication Adherence: WHO Cares? *Mayo Clin Proc.* 2011;86(4):304-14. doi: 10.4065/acp.2010.0575
3. PAHO. Risks of not adhering to antimicrobial treatment guidelines. 2021. Available in: <https://bit.ly/4bTxkS9>
4. Parra-Gómez LA, Galeano L, Chacón-Manosalva M, Camacho P. Barriers to the knowledge, treatment and control of arterial hypertension in Latin America: a scoping review *Rev Panam Salud Pública.* 2023;47:1. doi: 10.26633/RPSP.2023.26
5. Leong DP, Joseph PG, McKee M, Anand SS, Teo KK, Schwalb JD, et al. Reducing the Global Burden of Cardiovascular Disease, Part 2: Prevention and Treatment of Cardiovascular Disease. *Circ Res.* 2017;121(6):695-710. doi: 10.1161/CIRCRESAHA.117.311849
6. Ortega J, Ramón S, Astudillo E, Ávila S, Vásquez X, Solórzano G, et al. Adherence to the treatment of arterial hypertension in older adults. *ZENODO.* 2021. Available in: <https://zenodo.org/record/4484355>
7. WHO. World Health Organization guidelines on the pharmacological treatment of hypertension: policy implications for the Region of the Americas. 2021. Available from: <https://iris.paho.org/handle/10665.2/55963>
8. Pocohuanca-Ancco L, Villacorta J, Hurtado-Roca Y. Factors associated with non-adherence to antihypertensive pharmacological treatment in patients of a social security hospital. *Rev Cuerpo Méd Hosp Nac Almanzor Aguinaga Asenjo.* 2021;14(3):316-21. doi 10.35434/rcmhnaaa.2021.143.1252
9. Martín AL. Public health implications of poor therapeutic adherence. *Rev Cuba Salud Pública.* 2006;32(3). Available from: <https://bit.ly/4bdhtNf>

10. Herrera-Añazco P, Pacheco-Mendoza J, Valenzuela-Rodríguez G, Málaga G. Self-knowledge, adherence to treatment and control of high blood pressure in Peru. *Rev. perú. med. exp. salud publica.* 2017;34(3). doi: 10.17843/rpmesp.2017.343.2622
11. Sandoval D, Chacón J, Muñoz R, Henríquez Ó, Koch E, Romero T. Influence of psychosocial factors on adherence to antihypertensive pharmacological treatment: Results from a cohort of the Cardiovascular Health Program of the Metropolitan Region, Chile. *Rev Médica Chile.* 2014;142(10):1245-52. doi: 10.4067/S0034-98872014001000003
12. Real Delor R, Gamez Cassera MA, Redes Zeballos ML, Martínez Urizar M, Aguilera Iriarte GA, Oviedo Velázquez G, et al. Adherence to antihypertensive treatment in adults at Family Health Units in Paraguay: a multicenter study. *Rev Salud Publica Parag.* 2021;11(2):35-41. doi: 10.18004/rspp.2021.diciembre.35
13. Sotomayor-Perales J, Delgado-Flores C, Carrión-Arcela J, et al. Clinical Practice Guideline for the management of Essential Arterial Hypertension. *Rev Cuerpo Méd Hosp Nac Almanzor Aguinaga Asenjo.* 2024. 17(1). doi: 10.35434/rcmh-naaa.2024.171.1969
14. Ministry of Health. Clinical Practice Guide for the Prevention and Control of Hypertensive Disease at the First Level of Care. 2011. Available from: <https://bit.ly/3VgEXuF>
15. Holguín L, Correa D, Arrivillaga M, Cáceres D, Varela M. Adherence to arterial hypertension treatment: Effectiveness of biopsychosocial intervention program. *Univ Psychol.* 2006;5(3):535-48. ISSN: 1657-9267
16. Miller TA. Health literacy and adherence to medical treatment in chronic and acute illness: A meta-analysis. *Patient Educ Couns.* 2016;99(7):1079-86. doi: 10.1016/j.pec.2016.01.020
17. National Institute of Statistics and Informatics. Peru: Population Estimates and Projections by Department, Sex and Five-Year Age Groups. 2009. Available in: <https://bit.ly/45gW4kP>
18. Gorostidi M, Gijón-Conde T, De La Sierra A, Rodilla E, Rubio E, Vinyoles E, et al. Practical guide on the diagnosis and treatment of high blood pressure in Spain, 2022. *Spanish Society of Hypertension - Spanish League for the Fight against High Blood Pressure (SEH-LELHA). Hipertens Riesgo Vasc.* 2022;39(4):174-94. doi: 10.1016/j.hipert.2022.09.002
19. Regidor E. Measures of health inequalities: part 2. *J Epidemiol Community Health.* 2004;58(11):900-3. doi: 10.1136/jech.2004.023036
20. Contoyannis P, Hurley J, Walli-Attaei M. When the technical is also normative: a critical assessment of measuring health inequalities using the concentration index-based indices. *Popul Health Metr.* 2022;20(1):21. doi: 10.1186/s12963-022-00299-y
21. Espinoza-Marchan H, Alvarez-Risco A, Solís-Tarazona Z, Villegas-Chiguala J, Zavaleta-Calderón A, Astuvilca-Cupe J, et al. Access to medications in Comprehensive Health Insurance (SIS) patients with diabetes mellitus and/or high blood pressure in Peru. *Rev OFIL.* 2021;31(1):71-7. doi: 10.4321/s1699-714x20210001000015
22. INEI. Access to health insurance: National Institute of Statistics and Informatics. 2020. Available in: <https://bit.ly/3yR6IT0>
23. Paniz VMV, Fassa AG, Facchini LA, Bertoldi AD, Piccini RX, Tomasi E, et al. Access to continuous-use medication among adults and the elderly in South and Northeast Brazil. *Cad Saude.* 2008;24(2):267-80. doi: 10.1590/s0102-311x2008000200005
24. Miranda VIA, Schäfer AA, Tomasi CD, Soratto J, de Oliveira Meller F, Silveira MPT. Inequalities in access to medicines for diabetes and hypertension across the capitals in different regions of Brazil: a population-based study. *BMC Public Health.* 2021;21(1):1242. doi: 10.1186/s12889-021-11279-6
25. Langabeer JR, Henry TD, Perez Aldana C, DeLuna L, Silva N, Champagne-Langabeer T. Effects of a Community Population Health Initiative on Blood Pressure Control in Latinos. *J Am Heart Assoc.* 2018;7(21):e010282. doi: 10.1161/JAHA.118.010282
26. Tarraf W, Rodríguez CJ, Daviglius ML, Lamar M, Schneiderman N, Gallo L, et al. Blood Pressure and Hispanic/Latino Cognitive Function: Hispanic Community Health Study/Study of Latinos Results. *J Alzheimers Dis JAD.* 2017;59(1):31-42. doi: 10.3233/JAD-170017
27. Foster M, Etchin A, Pope C, Hartmann CW, Emidio O, Bosworth HB. The Impact of COVID-19 on Hypertension and Hypertension Medication Adherence Among Underrepresented Racial and Ethnic Groups: A Scoping Review. *Curr Hypertens Rep.* 2023;25(11):385-94. doi: 10.1007/s11906-023-01262-4
28. INEI. The 72.5% of the country's population aged 6 and over accessed the Internet in the first quarter of 2022. 2022. Available in: <https://bit.ly/4aZE13R>
29. Bernabe-Ortiz A, Pauschardt J, Diez-Canseco F, Miranda JJ. Sustainability of mHealth Effects on Cardiometabolic Risk Factors: Five-Year Results of a Randomized Clinical Trial. *J Med Internet Res.* 2020;22(4):e14595. doi: 10.2196/14595
30. Glynn LG, Murphy AW, Smith SM, Schroeder K, Fahey T. Interventions used to improve control of blood pressure in patients with hypertension. *Cochrane Database Syst Rev.* 2010;(3):CD005182. doi: 10.1002/14651858.CD005182.pub4
31. Fahey T, Schroeder K, Ebrahim S. Interventions used to improve control of blood pressure in patients with hypertension. *Cochrane Database Syst Rev.* 2006 Apr 19;(2):CD005182. doi: 10.1002/14651858.CD005182.pub2. Update in: *Cochrane Database Syst Rev.* 2006;(4):CD005182. doi: 10.1002/14651858.CD005182.pub3
32. Ng N, Carlberg B, Weinehall L, Norberg M. Trends of blood pressure levels and management in Västerbotten County, Sweden, during 1990-2010. *Glob Health Action.* 2012;5. doi: 10.3402/gha.v5i0.18195
33. Gavrilova A, Bandere D, Rutkovska I, Šmits D, Mauriņa B, Poplavskā E, et al. Knowledge about Disease, Medication Therapy, and Related Medication Adherence Levels among Patients with Hypertension. *Medicina (Mex).* 2019;55(11):715. doi: 10.3390/medicina55110715

34. Mohanty SK, Pedgaonkar SP, Upadhyay AK, et al. Awareness, treatment, and control of hypertension in adults aged 45 years and over and their spouses in India: A nationally representative cross-sectional study. *PLoS Med.* 2021;18(8):e1003740. doi: 10.1371/journal.pmed.1003740
35. Abrahamowicz AA, Ebinger J, Whelton SP, et al. Racial and Ethnic Disparities in Hypertension: Barriers and Opportunities to Improve Blood Pressure Control. *Curr Cardiol Rep.* 2023;25(1):17-27. doi: 10.1007/s11886-022-01826-x
36. Rosas-Chavez G, Romero-Visurraga CA, Ramirez-Guardia EN, et al. The degree of health literacy and adherence to treatment in patients with arterial hypertension in a national hospital in Lima, Peru. *Rev Peru Med Exp Salud Pública.* 2019;214-21. doi: 10.17843/rpmpesp.2019.362.4279
37. Lötsch F, Auer-Hackenberg L, Groger M, Rehman K, Morrison V, Holmes E, et al. Adherence of patients to long-term medication: a cross-sectional study of antihypertensive regimens in Austria. *Wien Klin Wochenschr.* 2015;127(9):379-84. doi: 10.1007/s00508-015-0782-y
38. Chamber of Commerce of Lima. Economic report on the Unemployment Rate: Chamber of Commerce. 2017. Available in: <https://bit.ly/3RkgJyo>
39. Crowley MJ, Grubber JM, Olsen MK, Bosworth HB. Factors Associated with Non-Adherence to Three Hypertension Self-Management Behaviors: Preliminary Data for a New Instrument. *J Gen Intern Med.* 2013;28(1):99-106. doi: 10.1007/s11606-012-2195-1
40. Natarajan N, Putnam W, Van Aarsen K, et al. Adherence to antihypertensive medications among family practice patients with diabetes mellitus and hypertension. *Can Fam Physician.* 2013;59(2):e93-100. Available from: <https://pubmed.ncbi.nlm.nih.gov/23418264/>
41. Castro MC, Ticona CV, Rayme MI, et al. Lifestyles associated with treatment adherence in hypertensive patients. *ZENODO.* 2021; Available from: <https://bit.ly/3VgjuH>
42. Dalal JJ, Kerkar P, Guha S, et al. Therapeutic adherence in hypertension: Current evidence and expert opinion from India. *Indian Heart J.* 2021;73(6):667-73. doi: 10.1016/j.ihj.2021.09.003
43. Arrivillaga M, Cáceres de Rodríguez D, Correa D, et al. Can a biopsychosocial intervention reduce pressure levels?. *MedUBA.* 2006.9(1). Available from: <https://bit.ly/3xfKSbt>
44. Pacheco-Romero J. High blood pressure in different ages of women. *An Fac Med.* 2010;71(4):257-64. Available from: <https://bit.ly/3x2qFpF>
45. Múnera-Echeverri AG, Muñoz-Ortiz E, Ibarra-Burgos JA, et al. High blood pressure and pregnancy. *Rev Colomb Cardiol.* 2021;28(1):3-13. doi: 10.24875/rccar.m21000002
46. Tagle R, Acevedo M, Valdés G. Hypertension in women. *Rev Med Chil.* 2013;141(2):237-47. doi: 10.4067/S0034-98872013000200014
47. Lomelí C, Rosas M, Mendoza-González C, Lorenzo JA, Pastelín G, Méndez A, et al. Hypertension in women. *Arch Cardiol Mex.* 2008;78(Suppl 2):S2-98-103. Available from: <https://bit.ly/3XhD3Na>
48. Urrea JK. High blood pressure in women *Rev Colomb Cardiol.* 2018;25:13-20. doi:10.1016/j.rccar.2017.12.003
49. Mancia G, Laurent S, Agabiti-Rosei E, et al. Reappraisal of European guidelines on hypertension management: a European Society of Hypertension Task Force document. *J Hypertens.* 2009;27(11):2121-58. doi: 10.1097/HJH.0b013e328333146d
50. Ghelfi AM, Staffieri GJ. Arterial hypertension in non-pregnant women of fertile age. *Med Clínica.* 2022;159(2):101-5. doi: 10.1016/j.medcli.2022.02.009
51. Mendoza Reyes R. Therapeutic adherence in patients with chronic non-communicable diseases: diabetes, hypertension and obesity. *Rev Med Ética.* 2021;32(4):897-945. doi: 10.36105/mye.2021v32n4.01
52. Düsing R. Overcoming barriers to effective blood pressure control in patients with hypertension. *Curr Med Res Opin.* 2006;22(8):1545-53. doi: 10.1185/030079906X120995
53. García Cueto E, Cueto Espinar A, Fernández Rodríguez S, et al. Categorization of psychosocial factors associated with antihypertensive drug compliance. *Psicothema.* 2003;15(1):82-7. ISSN 0214-9915
54. Moreno MI. Effectiveness of a high blood pressure self-management intervention in improving therapeutic inertia and adherence to antihypertensive medications. *ADAMPA pragmatic clinical trial.* 2021. Available from: <https://hdl.handle.net/10550/78925>

TABLES Y FIGURES

Table1 1. Sociodemographic characteristics of Peruvian adults with arterial hypertension according to treatment adherence

Variables	Hypertensive adults who did not take medications as prescribed (N=2252)		Adults with hypertension who took their medications as prescribed (N=13372)		P-value**
	n	%* (95%CI)	n	%* (95%CI)	
Sex?					
Male	796	12.08 (10.58 a 13.76)	4,716	87.92 (86.24 a 89.42)	0.070
Female	1,456	14.13 (12.67 a 15.72)	8,656	85.87 (84.28 a 87.33)	
Age Group?					
30 to 49 years	651	17.31 (15.24 a 19.60)	2,681	82.69 (80.40 a 84.76)	<0.001
50 to 64 years	782	16.06 (13.79 a 18.63)	4,255	83.94 (81.37 a 86.21)	
65 or more years	819	10.49 (9.16 a 11.98)	6,436	89.51 (88.02 a 90.84)	
Educational Level?					
Without Education	291	13.99 (11.60 a 16.78)	1,588	86.01 (83.22 a 88.40)	<0.001
Elementary	808	12.86 (11.48 a 14.37)	5,184	87.14 (85.63 a 88.52)	
High School	727	16.04 (13.90 a 18.43)	3,632	83.96 (81.57 a 86.10)	
University	425	10.54 (9.04 a 12.26)	2,964	89.46 (87.74 a 90.96)	
Wealth Index?					
Q5 (lower)	631	17.31 (15.04 a 19.85)	3,039	82.69 (80.15 a 84.96)	<0.001
Q4	511	15.36 (13.52 a 17.40)	2,812	84.64 (82.60 a 86.48)	
Q3	458	14.85 (12.59 a 17.44)	2,481	85.15 (82.56 a 87.41)	
Q2	371	13.72 (10.91 a 17.13)	2,423	86.28 (82.87 a 89.09)	
Q1 (higher)	281	9.44 (7.58 a 11.70)	2,617	90.56 (88.30 a 92.42)	
Area of Residence?					
Urbano	1,906	14.54 (13.04 a 16.18)	10,817	85.46 (83.82 a 86.96)	0.180
Rural	346	13.15 (11.89 a 14.51)	2,555	86.85 (85.49 a 88.11)	
Place of Residence?					
Other Regions	712	14.58 (13.31 a 15.96)	3,763	85.42 (84.04 a 86.69)	0.025
Capital	1,540	11.78 (9.97 a 13.87)	9,609	88.22 (86.13 a 90.03)	
Health Insurance?					
No	313	15.88 (13.09 a 19.14)	1,387	84.12 (80.86 a 86.91)	0.055
Yes	1,782	12.87 (11.65 a 14.18)	11,189	87.13 (85.82 a 88.35)	

* Estimated percentage considering the weighting factor.

**P-value estimated with the Rao-Scott test.

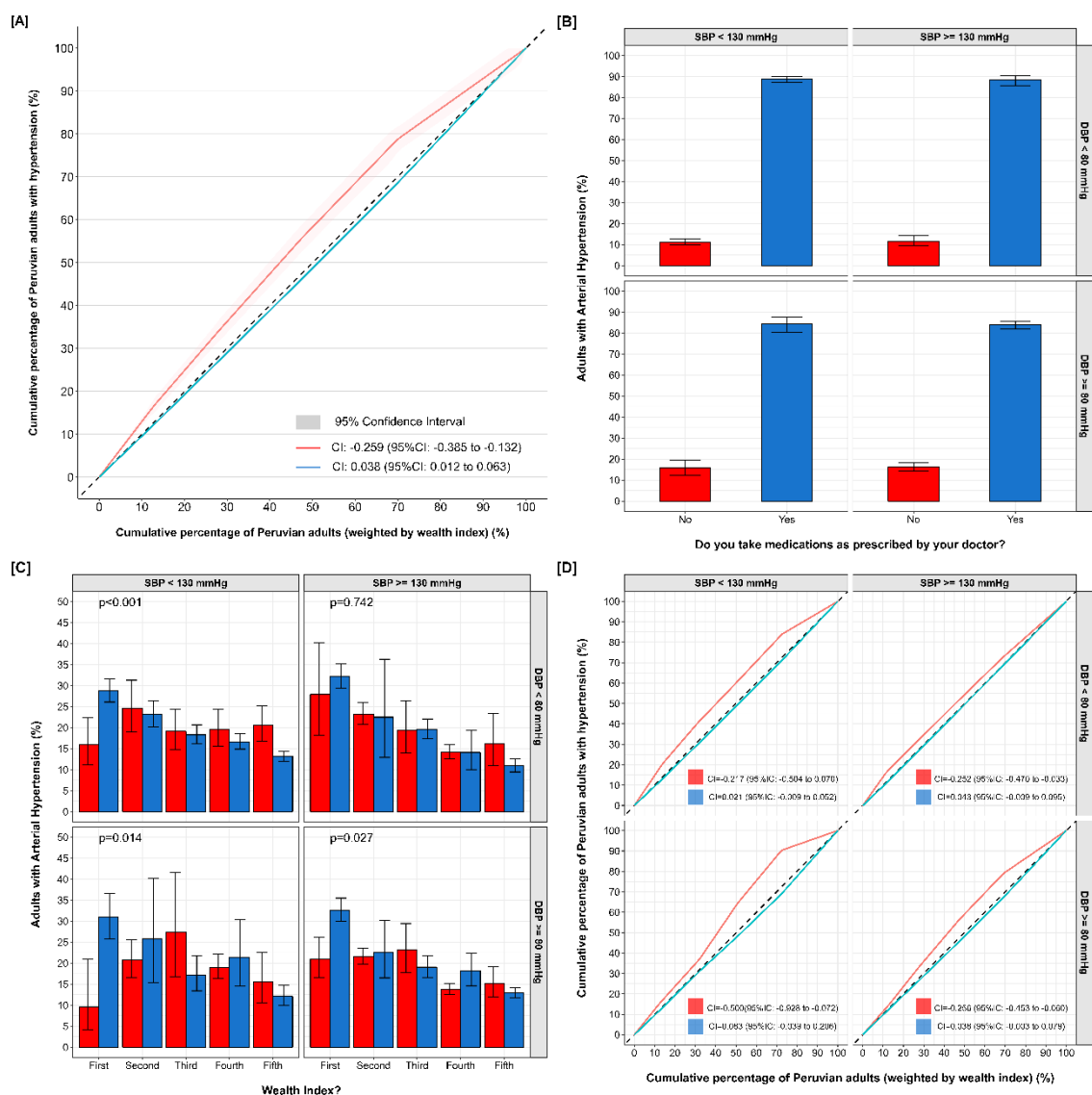
Table 2. Regression models to estimate the prevalence of treatment adherence according to sociodemographic and health characteristics among hypertensive adults

Variables	Crude Model			Adjusted Model		
	cPR	95%CI	P-value*	aPR	95%CI	P-value*
Sex?						
Male		REF			REF	
Female	1.17	0.987 a 1.386	0.07	0.985	0.96 1.011	0.258
Age Group?						
65 or more years		REF			REF	
50 to 64 years	1.532	1.252 a 1.874	<0.001	0.945	0.914 0.976	0.001
30 to 49 years	1.65	1.374 a 1.983	<0.001	0.931	0.897 0.968	<0.001
Educational Level?						
University		REF			REF	
High School	1.521	1.256 a 1.842	<0.001	0.956	0.927 0.986	0.004
Elementary	1.219	1.016 a 1.463	0.033	0.99	0.962 1.018	0.479
Without Education	1.327	1.058 a 1.665	0.014	0.98	0.939 1.022	0.338
Wealth Index?						
Q5 (lower)		REF			REF	
Q4	1.454	1.061 a 1.993	0.020	0.966	0.929 1.005	0.083
Q3	1.573	1.201 a 2.062	0.001	0.952	0.918 0.989	0.010
Q2	1.628	1.267 a 2.091	<0.001	0.937	0.901 0.974	0.001
Q1 (higher)	1.834	1.417 a 2.374	<0.001	0.879	0.822 0.941	<0.001
Area of Residence?						
Urbano		REF			REF	
Rural	1.106	0.954 a 1.282	0.180	1.056	1.007 1.108	0.025
Place of Residence?						
Other Regions		REF			REF	
Capital	0.808	0.669 a 0.975	0.027	1.006	0.977 1.037	0.682
Health Insurance?						
No		REF			REF	
Yes	0.81	0.655 a 1.002	0.053	1.022	0.982 1.063	0.288

cPR: crude Prevalence Ratio, **aPR:** Prevalence Ratio adjusted for the other variables, **95%CI:** Confidence interval at 95%, **REF:** Category used as reference for estimates.

*P-value estimated by Poisson regression model with robust variance and weighting factor.

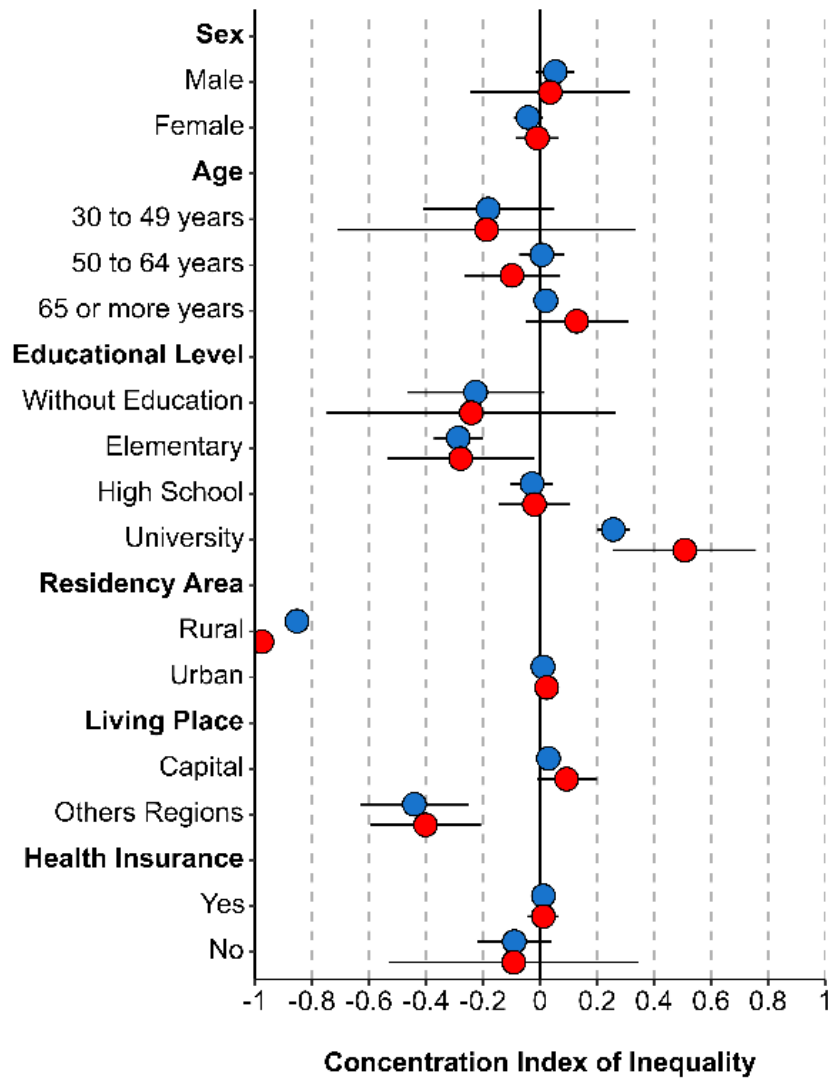
Figure 1. Socioeconomic inequality in adherence to antihypertensive treatment according to blood pressure range in Peruvian adults



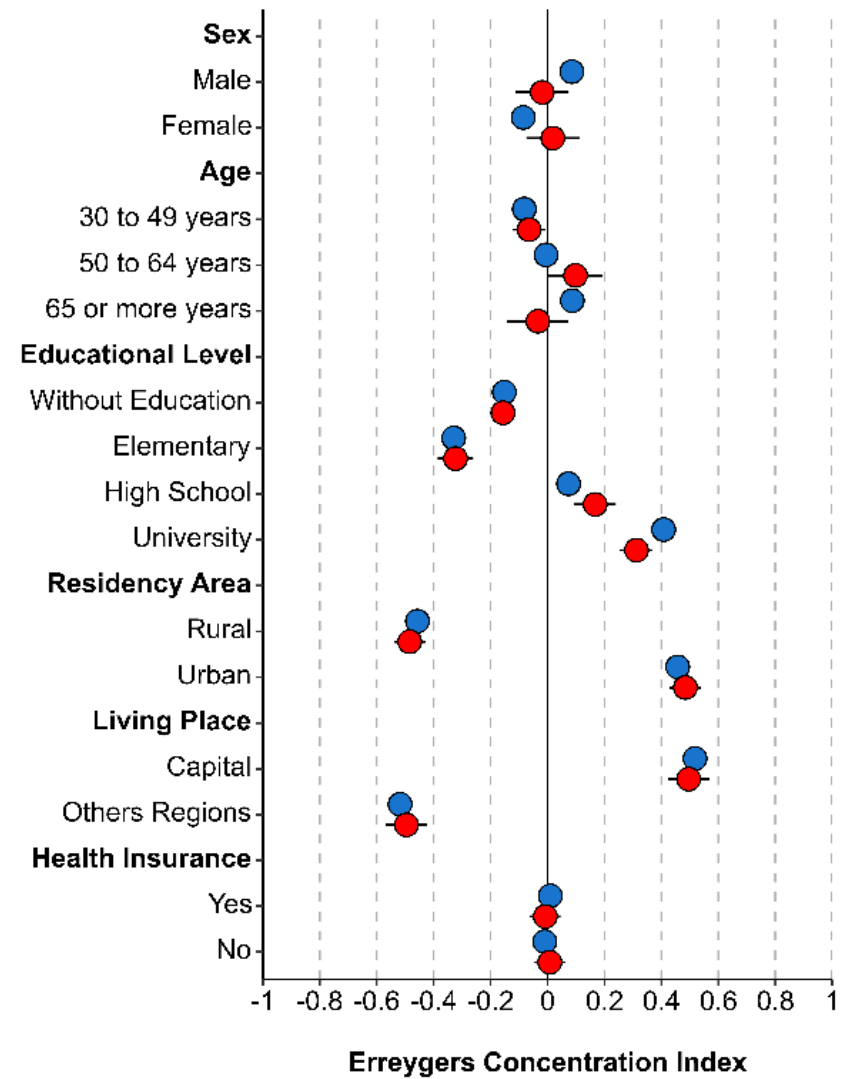
CI: Concentration Index, SBP: Systolic Blood Pressure, DBP: Diastolic Blood Pressure.

Figure 2. Socioeconomic inequality in adherence to antihypertensive treatment in Peruvian adults

[A]



[B]



Adherence in the Uptake of Antihypertensive Treatment? ● No ● Yes

Figure 3. Distribution of adherence to antihypertensive treatment in Peruvian adults

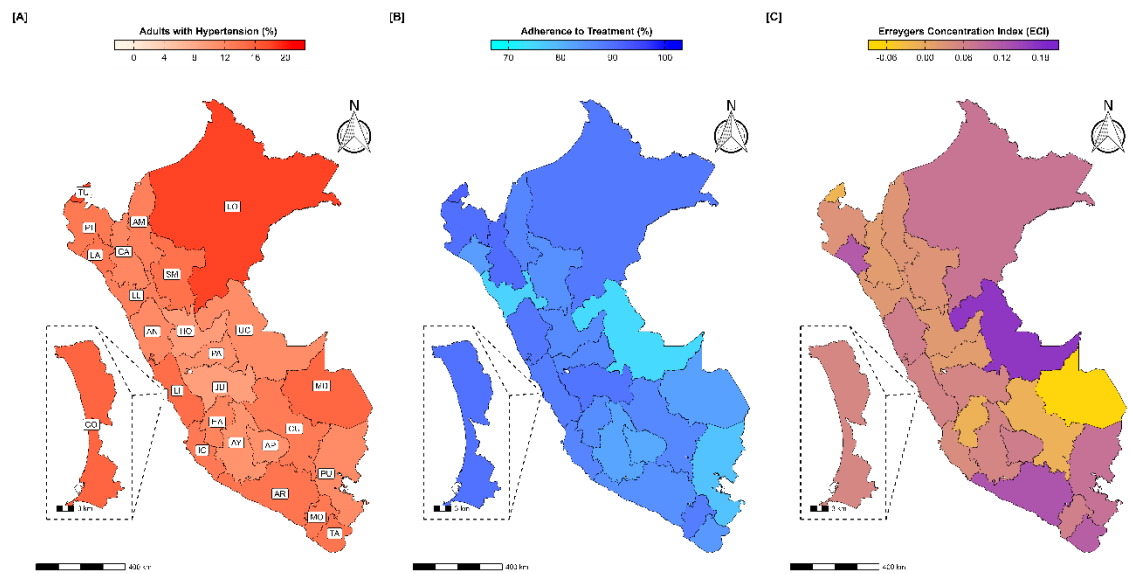


Figure 4. Annual variation of inequality in adherence to antihypertensive treatment in Peru

