

# Causal Relationship between Mental Disorders and Cancers: a Mendelian Randomization Study

Bowen Du<sup>1, 2</sup>, Han Hong<sup>1, 2</sup>, Chaopeng Tang<sup>1</sup>, Li Fan<sup>1</sup>, Jie Dong<sup>1</sup>, Jingping Ge<sup>1, \*</sup>, Xuejun Shang<sup>1, \*</sup>

<sup>1</sup>Department of Urology, Jinling Hospital, Affiliated Hospital of Medical School, Nanjing University, Nanjing, China

<sup>2</sup>These authors contributed equally: Bowen Du, Han Hong

\*Correspondence

Jingping Ge

[gjp\\_doctor@hotmail.com](mailto:gjp_doctor@hotmail.com)

Xuejun Shang

[shangxj98@163.com](mailto:shangxj98@163.com)

**NOTE: This preprint reports new research that has not been certified by peer review and should not be used to guide clinical practice.**

# 1 Abstract

2 **Background:** Evidence from observational studies suggests an association between  
3 mental disorders and cancers. However, the causality of this association remains unclear.

4  
5 **Methods:** We collected genome-wide association study (GWAS) summary statistics of  
6 five mental disorders from the Psychiatric Genomics Consortium (PGC, 72,517 to  
7 500,199 participants), paired with GWAS summary statistics of the risks of 18 cancer  
8 types from the UK Biobank (167,020 to 361,194 participants) and FinnGen database  
9 (110,521 to 264,701 participants). We conducted univariable and multivariable  
10 Mendelian randomization (MR) analyses to explore the causal relationships.

11  
12 **Results:** We identified ten causal associations between mental disorders and cancer  
13 risks. Notably, anorexia nervosa (AN) exhibits a causal association with a decreased  
14 risk of prostate cancer ( $\beta = -0.30$ ,  $p = 1.61 \times 10^{-6}$ ) and an elevated risk for stomach  
15 cancer ( $\beta = 0.47$ ,  $p = 5.3 \times 10^{-3}$ ). Bipolar disorder (BD) is causally linked to a reduced  
16 risk of pancreatic cancer ( $\beta = -5.13 \times 10^{-4}$ ,  $p = 3.2 \times 10^{-3}$ ). Major depression disorder  
17 (MDD) is causally associated with an elevated risk of bladder cancer ( $\beta = 1.84 \times 10^{-3}$ ,  
18  $p = 5.0 \times 10^{-4}$ ) and kidney cancer ( $\beta = 1.40 \times 10^{-3}$ ,  $p = 4.9 \times 10^{-3}$ ). Additionally, we  
19 found the causal effect of skin melanoma on BD ( $\beta = -10.39$ ,  $p = 2.1 \times 10^{-4}$ ) and  
20 Schizophrenia (SCZ,  $\beta = -7.42$ ,  $p = 3.3 \times 10^{-4}$ ) with a bi-directional MR analysis.  
21 Moreover, we identified leukocyte count as a causal mediator of a causal association  
22 between AN and stomach cancer with a two-step MR analysis.

23  
24 **Conclusions:** In summary, our MR analysis reveals that mental disorders were causally  
25 associated with cancer risks.

26  
27 **Keywords:** Mental disorders, Cancer, Mendelian randomization, Genetics, SNP

# 1 **Background**

2 Mental disorders, such as attention-deficit and hyperactivity disorder (ADHD),  
 3 anorexia nervosa (AN), bipolar disorder (BD), major depression disorder (MDD), and  
 4 schizophrenia (SCZ), pose a considerable global burden on human health [1].  
 5 Meanwhile, cancer also represents a significant public health challenge worldwide [2].  
 6 Existing observational studies have established associations between mental disorders  
 7 and various types of cancers. For example, ADHD is correlated with an increased risk  
 8 of colorectal cancer [3], while AN is implicated in elevated risk for both lung cancer  
 9 and esophageal cancer [4], as well as a reduced risk of breast cancer [5]. BD appears to  
 10 be associated with an increased risk of multiple types of cancers, particularly breast  
 11 cancer [6, 7]. Moreover, individuals with depressive symptoms experience higher  
 12 mortality rates and diminished disease-free survival in the context of bladder cancer [8].  
 13 SCZ is associated with an increased risk of breast cancer [9] but exhibits a decreased  
 14 risk for colorectal and prostate cancer [10, 11].

15  
 16 While evidence indicates a correlation between mental disorders and various cancers,  
 17 the causality underlying these associations has not been fully investigated, primarily  
 18 due to unmeasured confounding variables or reverse causation. Advances in large-scale  
 19 genome-wide association study (GWAS) and the methodology of Mendelian  
 20 randomization (MR) have enabled researchers to investigate the causal relationships  
 21 between risk factors and disease outcomes. Existing studies investigating the causal  
 22 relationships between mental disorders and cancers have predominantly focused on  
 23 breast cancer [12-14]. Nevertheless, comprehensive investigations into the causal  
 24 association between mental disorders and a broader range of cancers are still lacking.  
 25 Moreover, the mechanisms by which mental disorders influence cancer risks also need  
 26 to be investigated.

27  
 28 In this study, we conducted a comprehensive two-sample univariable MR (UVMR)  
 29 analysis to explore causal relationships between five distinct mental disorders and 18  
 30 types of cancer. Additionally, employing a bi-directional MR approach, we assessed the

potential causal effect of cancers on mental disorders. To ascertain the reliability of our findings, we performed a multivariable MR (MVMR) analysis. Finally, we sought to identify potential mediators of the causal associations, utilizing a two-step MR approach.

## Methods

### Datasets

All analyses in this investigation relied on summary-level GWAS data. We sourced the summary statistics for GWAS of mental disorders from the Psychiatric Genomics Consortium (PGC) - a large-scale, multi-ethnic psychiatric GWAS repository composed of over 400,000 participants. We examined a total of five mental disorders: attention deficit hyperactivity disorder (ADHD), bipolar disorder (BD), anorexia nervosa (AN), major depressive disorder (MDD), and schizophrenia (SCZ).

We employed 54 GWAS summary statistics encompassing 18 types of cancers, which were sourced from the UK Biobank, composed of ~500,000 participants [15], and FinnGen datasets [16], composed of ~370,000 participants, as our outcome data. The UK Biobank GWAS summary statistics were acquired from the Neale Lab, while the FinnGen GWAS summary statistics were downloaded from the FinnGen website. We utilized GWAS summary statistics for 65 clinical traits from the UK Biobank dataset as potential mediators in the two-step MR analysis. These summary statistics were acquired from the Neale Lab. All the GWAS data used in this study were restricted to European ancestry. Comprehensive details of all GWAS summaries are provided in Table S1.

### Instrumental variable selection

The genetic instrument variables (IVs), typically single-nucleotide polymorphisms (SNPs), were derived from GWAS summary statistics utilizing the TwoSampleMR R package. For IV clumping, the p-value was set to  $5 \times 10^{-8}$ ; other parameters were set with  $R^2 < 0.01$  and clumping distance = 250 kb. In the data harmonization process, both

1 palindromic and duplicated SNPs were excluded.

2

3 Instrumental variable (IV) outliers were identified using the MR-PRESSO R package.

4 For each SNP, the MR-PRESSO outlier test calculated a p-value to assess its

5 significance for pleiotropy, while the MR-PRESSO global test calculated a p-value for

6 the overall presence of horizontal pleiotropy. SNPs with a p-value less than 0.05 were

7 removed if the global p-value was less than 0.05. Subsequently, the global p-value was

8 recalculated to evaluate the extent of pleiotropy.

9

## 10 **UVMR analysis**

11 We conducted a two-sample UVMR analysis to investigate the causal relationship

12 between mental disorders and cancers, employing the TwoSampleMR R package. We

13 utilized five established MR methods for MR analysis with multiple IVs: MR Egger

14 (MRE), weighted median (WM), inverse variance weighted (IVW), Simple mode, and

15 Weighted mode. Analyses with fewer than three IVs were excluded, as an inadequate

16 number of IVs would compromise the reliability of the analysis. Furthermore, we

17 established a multiple testing significance threshold:  $p < 0.05/n$ , where  $n$  is the number

18 of exposures [17].

19

20 To mitigate biases introduced by weak IVs, we calculated the F-statistic according to

21 the reference [18]. Initially, we computed the proportion of variance explained by each

22 IV (PVE) using the equation [19]:

$$23 \quad PVE = 2 \times EAF \times (1 - EAF) \times \beta^2$$

24 , where EAF represents the effect allele frequency (EAF), and  $\beta$  is the effect size. The

25 F-statistic is subsequently calculated using the formulation:

$$26 \quad F = \frac{N - k - 1}{k} \times \frac{PVE}{(1 - PVE)}$$

27 , where  $N$  is the sample size and  $k$  is the number of IVs. We computed the mean F-

28 statistic across all IVs. The F-statistic for AN was not calculated because the EAF

29 information is not available according to the policies of the PCG. Additionally, the MR

1 Steiger directionality test was used to examine whether exposure was directionally  
2 causal for the outcome [20].

3

#### 4 **Heterogeneity and pleiotropy test**

5 We evaluated the heterogeneity of MR analysis using Cochran's Q test, designating a  
6 p-value ( $P_Q$ ) less than 0.05 as the existence of heterogeneity. Pleiotropy was assessed  
7 via MR-Egger regression [21] and MR-PRESSO residuals tests, considering a p-value  
8 ( $P_{Egger}$  or  $P_{PRESSO}$ ) less than 0.05 as evidence of pleiotropy.  $P_Q$  and  $P_{Egger}$  were calculated  
9 using the TwoSampleMR R package.  $P_{PRESSO}$  was computed with the MRPRESSO R  
10 package. To ensure the reliability of our findings, we excluded the analyses with  $P_Q$ ,  
11  $P_{Egger}$ , or  $P_{PRESSO}$  below 0.05 from the results.

12

#### 13 **Bi-directional MR analysis**

14 To investigate the causal effect of cancers on mental disorders, we conducted a bi-  
15 directional MR analysis, using cancer risks as exposures and mental disorders as  
16 outcomes. The bi-directional MR analysis was executed in accordance with the  
17 procedure of UVMR analysis.

18

#### 19 **MVMR analysis**

20 Considering potential genetic correlations among exposures may introduce  
21 inaccuracies in UVMR analysis [22], we employed MVMR analysis using the MVMR-  
22 IVW method. Since mental disorders are associated with smoking, alcohol  
23 consumption, and insomnia [23-25], the analyses were adjusted for the confounding  
24 variables, including smoking, alcohol consumption, and insomnia within the European  
25 population. The MVMR analysis was executed using the TwoSampleMR R package  
26 and was conducted separately for each mental disorder. The IVs were selected based on  
27 the following criteria: a p-value threshold of  $5 \times 10^{-8}$ ,  $R^2$  less than 0.01, and a clumping  
28 distance of 250 kb.

29

#### 30 **Two-step MR analysis**

The two-step MR analysis was conducted to elucidate mediators in the causal association between mental disorders and cancer risks. We selected 65 clinical traits as the potential mediators. To avoid the overlap of samples, we used the GWAS summary statistics of mental disorders from PGC as the exposures, the GWAS summary statistics of clinical traits from the UK biobank as the mediators, and the GWAS summary statistics of cancer risks from FinnGen as the outcomes.

The two-step MR analysis was performed according to the guidelines [26, 27]. First, the causal effect of mental disorders on clinical traits ( $\beta_1$ ) was evaluated with UVMR analysis. Second, the causal effect of clinical traits on cancers ( $\beta_2$ ) was measured with UVMR analysis. We used separate IVs for mental disorders and clinical traits. The total causal effect of mental disorders on cancers ( $\beta_0$ ) was measured above. The indirect causal effect was measured with  $\beta_1 \times \beta_2$ . The direct causal effect was measured with  $\beta_0 - \beta_1 \times \beta_2$ . The proportion of indirect causal effect was measured with  $(\beta_1 \times \beta_2) / \beta_0$ .

## Results

### Study design

The design of this study is presented in Fig. 1. First, we applied UVMR analysis to investigate the causal associations between mental disorders and cancer risks. Second, we employed a bi-directional MR analysis to explore the causal effects of cancers on mental disorders. Third, we evaluated the reliability of causal associations with an MVMR analysis. Last, we used a two-step MR analysis to identify the mediators for the causal associations between mental disorders and cancers. The details of all GWAS summaries are presented in Table S1.

### Causal effects of mental disorders on cancers

We investigated the causal effect of five specific mental disorders (ADHD, AN, BD, MDD, and SCZ) on 18 distinct types of cancers with UVMR analysis. We utilized five established MR methods for MR analysis: MR Egger (MRE), weighted median (WM), inverse variance weighted (IVW), Simple mode, and Weighted mode. The results are

presented in Table 1 and Table S2. We identified ten causal associations between mental disorders and cancer risks, referring to AN, BD, MDD, and SCZ. No significant causal association with ADHD was observed.

Our analyses demonstrate that AN exhibits a causal association with the decreased risk of several cancers: prostate cancer ( $\beta \pm SE = -0.30 \pm 0.06$ ,  $p = 1.61 \times 10^{-6}$ , IVW), colon cancer [ $\beta \pm SE = -(3.33 \pm 1.09) \times 10^{-3}$ ,  $p = 2.4 \times 10^{-3}$ , WM], mesothelioma [ $\beta \pm SE = -(5.58 \pm 2.07) \times 10^{-4}$ ,  $p = 6.9 \times 10^{-3}$ , IVW], and pancreatic cancer [ $\beta \pm SE = -(1.17 \pm 0.35) \times 10^{-3}$ ,  $p = 8.3 \times 10^{-4}$ , IVW]. These findings suggest a potential protective effect of AN on these specific types of cancers. Conversely, AN is causally associated with an elevated risk for stomach cancer ( $\beta \pm SE = 0.47 \pm 0.17$ ,  $p = 5.3 \times 10^{-3}$ , IVW). Our analysis revealed conflicting results concerning the causal relationship between AN and skin melanoma across different databases. Specifically, AN was causally associated with a reduced risk of skin melanoma in the UK Biobank database [ $\beta \pm SE = -(3.39 \pm 0.85) \times 10^{-3}$ ,  $p = 6.5 \times 10^{-5}$ , IVW], whereas it correlated with an elevated risk in the FinnGen database ( $\beta \pm SE = 0.38 \pm 0.11$ ,  $p = 8.7 \times 10^{-4}$ , IVW). This contradictory result may be attributed to the population heterogeneity in these two databases.

Our findings suggest that BD is causally linked to a reduced risk of pancreatic cancer [ $\beta \pm SE = -(5.13 \pm 1.74) \times 10^{-4}$ ,  $p = 3.2 \times 10^{-3}$ , IVW], potentially indicating a protective effect in the development of pancreatic cancer. Conversely, MDD is causally associated with an elevated risk of bladder cancer [ $\beta \pm SE = (1.84 \pm 0.53) \times 10^{-3}$ ,  $p = 5.0 \times 10^{-4}$ , IVW] and kidney cancer [ $\beta \pm SE = (1.40 \pm 0.50) \times 10^{-3}$ ,  $p = 4.9 \times 10^{-3}$ , IVW]. SCZ is causally associated with a reduced risk of pancreatic cancer [ $\beta \pm SE = -(3.05 \pm 1.00) \times 10^{-4}$ ,  $p = 2.3 \times 10^{-3}$ , IVW] and testis cancer [ $\beta \pm SE = -(5.21 \pm 1.98) \times 10^{-4}$ ,  $p = 8.5 \times 10^{-3}$ , IVW].

### Causal effects of cancers on mental disorders

To estimate the causal effect of cancers on mental disorders, we conducted a bi-directional MR analysis, using cancer risks as exposures and mental disorders as



1 outcomes. Detailed results are delineated in Table 2 and Table S3. Specifically, skin  
2 melanoma is causally linked to a reduced risk of BD ( $\beta \pm SE = -10.39 \pm 2.80$ ,  $p = 2.1 \times$   
3  $10^{-4}$ , IVW) and SCZ ( $\beta \pm SE = -7.42 \pm 2.06$ ,  $p = 3.3 \times 10^{-4}$ , IVW).

4

## 5 **Causal effects independent of smoking, alcohol consumption, and insomnia**

6 Prior research has established associations between mental disorders and lifestyle  
7 factors such as smoking, alcohol consumption, and insomnia [23-25]. To assess the  
8 influence of these covariates on causal relationships, we conducted an MVMR analysis  
9 using smoking, alcohol consumption, and insomnia as covariates. The findings are  
10 presented in Table 3 and Table S4. Referring to AN, BD, and MDD, the MVMR analysis  
11 confirms the causal association identified in the UVMR analysis (Table 3). Specifically,  
12 AN is causally associated with a decreased risk of prostate cancer ( $\beta \pm SE = -0.20 \pm$   
13  $0.06$ ,  $p = 0.030$ , IVW), colon cancer [ $\beta \pm SE = -(1.58 \pm 0.71) \times 10^{-3}$ ,  $p = 0.026$ , IVW],  
14 mesothelioma [ $\beta \pm SE = -(5.62 \pm 1.82) \times 10^{-4}$ ,  $p = 2.0 \times 10^{-3}$ , IVW], and pancreatic  
15 cancer [ $\beta \pm SE = -(9.04 \pm 3.39) \times 10^{-4}$ ,  $p = 7.8 \times 10^{-3}$ , IVW]. Additionally, we identified  
16 a causal association between AN and an increased risk of stomach cancer ( $\beta \pm SE =$   
17  $0.31 \pm 0.15$ ,  $p = 0.042$ , IVW). BD is causally linked to a reduced risk of pancreatic  
18 cancer [ $\beta \pm SE = -(4.56 \pm 1.36) \times 10^{-4}$ ,  $p = 7.8 \times 10^{-4}$ , IVW]. MDD is causally associated  
19 with an elevated risk of bladder cancer [ $\beta \pm SE = (3.11 \pm 0.65) \times 10^{-3}$ ,  $p = 1.5 \times 10^{-6}$ ,  
20 IVW] and kidney cancer [ $\beta \pm SE = (1.46 \pm 0.42) \times 10^{-3}$ ,  $p = 4.8 \times 10^{-4}$ , IVW]. In contrast,  
21 SCZ shows no significant causal associations with either pancreatic cancer or testicular  
22 cancer when adjusted to those covariates. Nevertheless, our MVMR analyses affirm the  
23 robustness of our results concerning AN, BD, and MDD.

24

## 25 **The mediators of causal associations**

26 Mental disorders may exert an influence on cancer development through intermediary  
27 factors, such as metabolites [28] and immune cells [29, 30]. To investigate the potential  
28 mediators, we employed a two-step MR analysis. This methodology comprised two  
29 steps: firstly, the assessment of the causal effect of five mental disorders on potential  
30 mediators, and secondly, the evaluation of the causal effect of these mediators on cancer

risks. We selected 65 clinical traits as potential mediators, five of which were excluded due to insufficient IVs for analysis. The causal effects of mental disorders on clinical traits and the causal effects of clinical traits on cancer risks are individually delineated in Table S5 and Table S6.

As is shown in Fig. 2, leukocyte count serves as a mediator of the causal association between AN and stomach cancer. Specifically, AN is causally linked to a decreased leukocyte count ( $\beta \pm SE = -0.048 \pm 0.012$ ,  $p = 4.7 \times 10^{-5}$ , IVW), whereas leukocyte count is causally associated with a decreased risk of stomach cancer ( $\beta \pm SE = -1.336 \pm 0.579$ ,  $p = 0.022$ , Simple mode). The proportion of indirect causal effect is 13.6%. As low leukocyte count is an indicator of immune suppression [31], our finding suggests that AN promotes stomach cancer by inhibiting immune response.

In addition to the results mentioned above, our two-step MR analysis yields insightful findings regarding the causal association between mental disorders and clinical traits. Specifically, BD, MDD, and SCZ are associated with increased levels of aspartate aminotransferase (BD:  $\beta \pm SE = 0.031 \pm 0.008$ ,  $p = 8.4 \times 10^{-5}$ , IVW; MDD:  $\beta \pm SE = 0.055 \pm 0.016$ ,  $p = 5.5 \times 10^{-4}$ , IVW; SCZ:  $\beta \pm SE = 0.016 \pm 0.004$ ,  $p = 3.1 \times 10^{-4}$ , IVW; Fig. S1). MDD and SCZ are associated with increased levels of alanine aminotransferase (MDD:  $\beta \pm SE = 0.094 \pm 0.018$ ,  $p = 1.8 \times 10^{-7}$ , WM; SCZ:  $\beta \pm SE = 0.044 \pm 0.014$ ,  $p = 0.002$ , MRE; Fig. S1). This result indicates that these mental disorders may lead to liver injury. Moreover, our results reveal multiple potential carcinogenic factors. As is shown in Fig. S2, IGF-1 is associated with an increased risk of prostate cancer ( $\beta \pm SE = 0.164 \pm 0.037$ ,  $p = 1.1 \times 10^{-5}$ , IVW) and breast cancer ( $\beta \pm SE = 0.213 \pm 0.053$ ,  $p = 7.1 \times 10^{-5}$ , WM). Lymphocyte count is associated with an increased risk of pancreatic cancer ( $\beta \pm SE = 0.753 \pm 0.178$ ,  $p = 2.9 \times 10^{-5}$ , MRE) and colon cancer ( $\beta \pm SE = 0.707 \pm 0.125$ ,  $p = 2.7 \times 10^{-8}$ , MRE).

## Discussion

The investigation of causal relationships is substantially critical for elucidating the

1 driving factors behind observed associations. In this study, we employed MR analyses  
2 to assess the causal links between mental disorders and cancers. Furthermore, we  
3 identified mediators of these causal associations, enhancing our understanding of how  
4 mental disorders influence cancer progression. To the best of our knowledge, this study,  
5 encompassing five mental disorders, 18 types of cancer, and 60 mediators, is the most  
6 comprehensive analysis to date on the causal relationship between mental disorders and  
7 cancers.

8

9 AN is associated with an increased risk of various types of cancers, including lung  
10 cancer and esophageal cancer [4, 32]. Our study demonstrates a causal link between  
11 AN and an elevated risk of stomach cancer. Our two-step MR analysis identified  
12 leukocyte count as a mediator in the causal relationship between AN and stomach  
13 cancer. AN is causally associated with a reduction in leukocyte count, which in turn is  
14 linked to a decreased risk of stomach cancer. As low leukocyte count is an indicator of  
15 a compromised immune system, AN may facilitate the development of stomach cancer  
16 by suppressing immune function. Our findings suggest that the dysregulation of  
17 immune cells plays a critical role in the causal associations between mental disorders  
18 and cancers.

19

20 There has been controversy over whether depression can lead to tumorigenesis. A prior  
21 study indicated that individuals with depression have an 18% heightened risk of  
22 developing cancer, notably lung cancer, gastrointestinal tract cancer, breast cancer, and  
23 urinary cancer [33]. Conversely, other research has found no significant correlation  
24 between depression and cancer incidence [34]. Our studies revealed that MDD is  
25 causally associated with an increased risk of bladder cancer. This study provides new  
26 evidence suggesting that depression may contribute to cancer development.

27

28 Prior research has suggested that mental disorders may correlate with a low incidence  
29 of cancer [4]. We found that several mental disorders are causally associated with a  
30 reduced risk of cancers. AN exhibits inhibitive causal effects on colon cancer,

1 mesothelioma, pancreatic cancer, and prostate cancer. Moreover, BD is causally linked  
2 to a reduced risk of pancreatic cancer. These causal associations provide novel evidence  
3 for the notion that mental disorders may exhibit a protective effect on cancers in specific  
4 types of cancers.

5  
6 Previous studies have reported a higher incidence of mental disorders in people with  
7 cancers [35, 36]. However, this finding is influenced by some factors such as clinical  
8 stage, cancer treatment, and so on [36]. Whether tumors can cause depression is far  
9 from a conclusion. Our bi-directional MR analysis indicates that skin melanoma is  
10 causally associated with a reduced risk of BD and SCZ, providing novel evidence for  
11 the notion that cancer may lead to mental disorders. Our research did not detect much  
12 causal effect of cancers on mental disorders, which may be attributed to these reasons:  
13 First, an insufficient number of IVs exists for MR analysis in many cancer types.  
14 Second, a stringent p-value threshold was applied to correct for multiple testing.

15  
16 Nevertheless, this study has several limitations. First, our findings are derived from a  
17 European population, potentially leading to biased estimates and limited  
18 generalizability. Future research is required to investigate these causal relationships in  
19 diverse populations. Second, the strict criteria for multiple-testing correction may have  
20 resulted in the omission of some causal associations. Third, certain mental disorders,  
21 such as autism spectrum disorder, were excluded from this study due to the stringent p-  
22 value threshold for IVs. Fourth, while the F-statistic for AN is absent and the F-statistic  
23 for SCZ is below 10, this warrants caution regarding the weak IV bias for both AN and  
24 SCZ. Fifth, while we identified mediators of the causal association using a two-step  
25 MR analysis, experimental studies are still necessary to elucidate the mechanisms  
26 through which mental disorders affect cancer development.

## 27 **Conclusions**

28  
29 In summary, this study provides a comprehensive assessment of the causal relationship  
30 between mental disorders and diverse types of cancer using a two-sample MR analysis.

1 Our results revealed multiple causal association between mental disorders and cancer  
2 risks. Additionally, our investigation demonstrated that leukocyte count may be a  
3 mediator of the causal associations between AN and stomach cancer. This study not  
4 only sheds light on the mechanisms of cancer development but also holds significant  
5 implications for the prevention and targeted therapy of cancers.

## 6 **Abbreviations**

8 ADHD: Attention-deficit and hyperactivity disorder

9 AN: Anorexia nervosa

10 BD: Bipolar disorder

11 GWAS: Genome-wide association study

12 HDL: High-density lipoprotein

13 IV: Instrument variable

14 IVW: Inverse variance weighted

15 MDD: Major depression disorder

16 MR: Mendelian randomization

17 MRE: MR-Egger

18 MVMR: Mendelian randomization

19 SCZ: Schizophrenia

20 SM: Simple mode

21 SNP: Single-nucleotide polymorphisms

22 UVMR: Univariate Mendelian randomization

23 WM: weighted median

## 24 **Declarations**

### 26 **Ethics approval and consent to participate**

27 This study is performed using published studies and publicly available summary  
28 statistics. All original studies have been approved by the corresponding ethical review  
29 board. The participants have provided informed consent. Therefore, no new ethical  
30 review board approval was required.

1

## 2 **Consent for publication**

3 Consent for publication was obtained from every individual whose data are included in  
4 this manuscript.

5

## 6 **Availability of data and material**

7 The mental disorder GWAS summaries were downloaded from the PGC website  
8 (<https://pgc.unc.edu/for-researchers/download-results/>). The GWAS summary from  
9 UK Biobank were downloaded from the Neala Lab ([http://www.nealelab.is/uk-](http://www.nealelab.is/uk-biobank)  
10 [biobank](http://www.nealelab.is/uk-biobank)). The GWAS summary from FinnGen were downloaded following the  
11 instruction on its website ([https://www.finnngen.fi/en/access\\_results](https://www.finnngen.fi/en/access_results)). No special codes  
12 were used in this study. The codes for MR analysis with the TwoSampleMR R package  
13 are available on the GitHub repository  
14 (<https://github.com/BowenDuGroup/Mentaldisorderandcancer>).

15

## 16 **Competing interests**

17 The authors declare no conflict of interest.

18

## 19 **Funding**

20 This research received no specific grant from any funding agency in the public,  
21 commercial, or not-for-profit sectors.

22

## 23 **Authors' contributions**

24 B.D. designed the study. B.D. and H.H. analyzed the data. C.T. , L.F., and J.D. curated  
25 and processed the data. B.D. wrote the manuscript. J.G. and X.S. supervised the  
26 research. All authors read and approved the final manuscript.

27

## 28 **Acknowledgements**

29 The data analyzed in this study was provided by PGC consortium, UK Biobank,  
30 FinnGen and Neala Lab. We gratefully acknowledge their contributing studies and the

1 participants in these studies.

2

### 3 **References**

- 4 1. Wu J, Wang Y, Wang L, Wu H, Li J, Zhang L. Trends and burden in mental  
5 disorder death in China from 2009 to 2019: a nationwide longitudinal study.  
6 Front Psychiatry. 2023;14:1169502.
- 7 2. Siegel RL, Miller KD, Wagle NS, Jemal A. Cancer statistics, 2023. CA Cancer  
8 J Clin. 2023;73(1):17-48.
- 9 3. Hu JM, Lee CC, Lin TC, Chung CH, Chen CY, Chang PK,Chien WC. Risk of  
10 Colorectal Cancer in Patients With Attention-Deficit Hyperactivity Disorder: A  
11 Nationwide, Population-Based Cohort Study. Front Psychiatry. 2021;12:537137.
- 12 4. Catala-Lopez F, Fores-Martos J, Driver JA, Page MJ, Hutton B, Ridao  
13 M,Tabares-Seisdedos R. Association of Anorexia Nervosa With Risk of Cancer:  
14 A Systematic Review and Meta-analysis. JAMA Netw Open.  
15 2019;2(6):e195313.
- 16 5. O'Brien KM, Whelan DR, Sandler DP, Weinberg CR. Eating Disorders and  
17 Breast Cancer. Cancer Epidemiol Biomarkers Prev. 2017;26(2):206-211.
- 18 6. Chen MH, Tsai SJ, Su TP, Li CT, Lin WC, Cheng CM,Bai YM. Cancer risk in  
19 patients with bipolar disorder and unaffected siblings of such patients: A  
20 nationwide population-based study. Int J Cancer. 2022;150(10):1579-1586.
- 21 7. Anmella G, Fico G, Lotfaliany M, Hidalgo-Mazzei D, Soto-Angona O,  
22 Gimenez-Palomo A,Berk M. Risk of cancer in bipolar disorder and the potential  
23 role of lithium: International collaborative systematic review and meta-analyses.  
24 Neurosci Biobehav Rev. 2021;126:529-541.
- 25 8. Lin J, Blalock JA, Chen M, Ye Y, Gu J, Cohen L,Wu X. Depressive symptoms  
26 and short telomere length are associated with increased mortality in bladder  
27 cancer patients. Cancer Epidemiol Biomarkers Prev. 2015;24(2):336-343.
- 28 9. Zhuo C, Triplett PT. Association of Schizophrenia With the Risk of Breast  
29 Cancer Incidence: A Meta-analysis. JAMA Psychiatry. 2018;75(4):363-369.
- 30 10. Li H, Li J, Yu X, Zheng H, Sun X, Lu Y,Bi X. The incidence rate of cancer in

- 1 patients with schizophrenia: A meta-analysis of cohort studies. *Schizophr Res.*
- 2 2018;195:519-528.
- 3 11. Ge F, Huo Z, Liu Y, Du X, Wang R, Lin W,Gu D. Association between
- 4 schizophrenia and prostate cancer risk: Results from a pool of cohort studies
- 5 and Mendelian randomization analysis. *Compr Psychiatry.* 2022;115:152308.
- 6 12. Peng H, Wu X, Ge F, Huo Z, Wen Y, Li C,Liang W. Genetically predicted
- 7 bipolar disorder is causally associated with an increased risk of breast cancer: a
- 8 two-sample Mendelian randomization analysis. *Ann Transl Med.* 2021;9(5):401.
- 9 13. Ren Q, Luo F, Ge S, Chen P. Major depression disorder may causally associate
- 10 with the increased breast cancer risk: Evidence from two-sample mendelian
- 11 randomization analyses. *Cancer Med.* 2023;12(2):1984-1996.
- 12 14. Tang M, Wu X, Zhang W, Cui H, Zhang L, Yan P,Zhang B. Epidemiological
- 13 and Genetic Analyses of Schizophrenia and Breast Cancer. *Schizophr Bull.*
- 14 2023.
- 15 15. Sudlow C, Gallacher J, Allen N, Beral V, Burton P, Danesh J,Collins R. UK
- 16 biobank: an open access resource for identifying the causes of a wide range of
- 17 complex diseases of middle and old age. *PLoS Med.* 2015;12(3):e1001779.
- 18 16. Kurki MI, Karjalainen J, Palta P, Sipila TP, Kristiansson K, Donner KM,Palotie
- 19 A. FinnGen provides genetic insights from a well-phenotyped isolated
- 20 population. *Nature.* 2023;613(7944):508-518.
- 21 17. Long Y, Tang L, Zhou Y, Zhao S, Zhu H. Causal relationship between gut
- 22 microbiota and cancers: a two-sample Mendelian randomisation study. *BMC*
- 23 *Med.* 2023;21(1):66.
- 24 18. Burgess S, Thompson SG, Collaboration CCG. Avoiding bias from weak
- 25 instruments in Mendelian randomization studies. *Int J Epidemiol.*
- 26 2011;40(3):755-764.
- 27 19. Burgess S, Davies NM, Thompson SG. Bias due to participant overlap in two-
- 28 sample Mendelian randomization. *Genet Epidemiol.* 2016;40(7):597-608.
- 29 20. Hemani G, Tilling K, Davey Smith G. Orienting the causal relationship between
- 30 imprecisely measured traits using GWAS summary data. *PLoS Genet.*

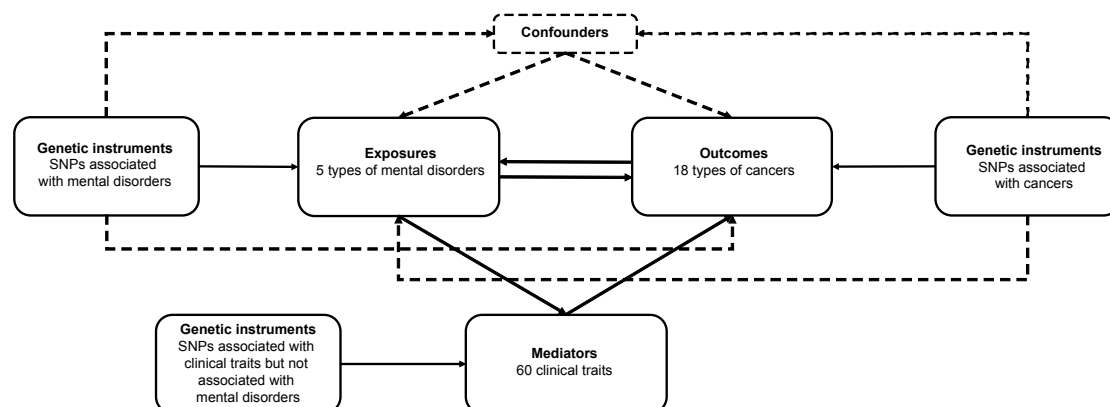


- 1 2017;13(11):e1007081.
- 2 21. Bowden J, Davey Smith G, Burgess S. Mendelian randomization with invalid  
3 instruments: effect estimation and bias detection through Egger regression. Int  
4 J Epidemiol. 2015;44(2):512-525.
- 5 22. O'Connor LJ, Price AL. Distinguishing genetic correlation from causation  
6 across 52 diseases and complex traits. Nat Genet. 2018;50(12):1728-1734.
- 7 23. Yuan S, Yao H, Larsson SC. Associations of cigarette smoking with psychiatric  
8 disorders: evidence from a two-sample Mendelian randomization study. Sci Rep.  
9 2020;10(1):13807.
- 10 24. Puddephatt JA, Irizar P, Jones A, Gage SH, Goodwin L. Associations of  
11 common mental disorder with alcohol use in the adult general population: a  
12 systematic review and meta-analysis. Addiction. 2022;117(6):1543-1572.
- 13 25. Hertenstein E, Feige B, Gmeiner T, Kienzler C, Spiegelhalder K, Johann  
14 A,Baglioni C. Insomnia as a predictor of mental disorders: A systematic review  
15 and meta-analysis. Sleep Med Rev. 2019;43:96-105.
- 16 26. Burgess S, Davey Smith G, Davies NM, Dudbridge F, Gill D, Glymour  
17 MM,Theodoratou E. Guidelines for performing Mendelian randomization  
18 investigations: update for summer 2023. Wellcome Open Res. 2019;4:186.
- 19 27. Burgess S, Daniel RM, Butterworth AS, Thompson SG, Consortium EP-I.  
20 Network Mendelian randomization: using genetic variants as instrumental  
21 variables to investigate mediation in causal pathways. Int J Epidemiol.  
22 2015;44(2):484-495.
- 23 28. Zheng P, Wang Y, Chen L, Yang D, Meng H, Zhou D,Xie P. Identification and  
24 validation of urinary metabolite biomarkers for major depressive disorder. Mol  
25 Cell Proteomics. 2013;12(1):207-214.
- 26 29. Pereira AC, Oliveira J, Silva S, Madeira N, Pereira CMF, Cruz MT.  
27 Inflammation in Bipolar Disorder (BD): Identification of new therapeutic  
28 targets. Pharmacol Res. 2021;163:105325.
- 29 30. Valenca AGF, Smith BJ. Schizophrenia Outside the Brain. Adv Exp Med Biol.  
30 2022;1400:53-63.

- 1 31. Kreisle WH, Modiano M. Leukopenia. In: *Decision Making in Medicine (Third*  
2 *Edition)*. edn. Edited by Mushlin SB, Greene HL. Philadelphia: Mosby; 2010:  
3 242-243.
- 4 32. Brewster DH, Nowell SL, Clark DN. Risk of oesophageal cancer among  
5 patients previously hospitalised with eating disorder. *Cancer Epidemiol.*  
6 2015;39(3):313-320.
- 7 33. Mossinger H, Kostev K. Depression Is Associated with an Increased Risk of  
8 Subsequent Cancer Diagnosis: A Retrospective Cohort Study with 235,404  
9 Patients. *Brain Sci.* 2023;13(2).
- 10 34. van Tuijl LA, Basten M, Pan KY, Vermeulen R, Portengen L, de Graeff  
11 A,Ranchor AV. Depression, anxiety, and the risk of cancer: An individual  
12 participant data meta-analysis. *Cancer.* 2023;129(20):3287-3299.
- 13 35. Venkataramu VN, Ghotra HK, Chaturvedi SK. Management of psychiatric  
14 disorders in patients with cancer. *Indian J Psychiatry.* 2022;64(Suppl 2):S458-  
15 S472.
- 16 36. Niedzwiedz CL, Knifton L, Robb KA, Katikireddi SV, Smith DJ. Depression  
17 and anxiety among people living with and beyond cancer: a growing clinical  
18 and research priority. *BMC Cancer.* 2019;19(1):943.

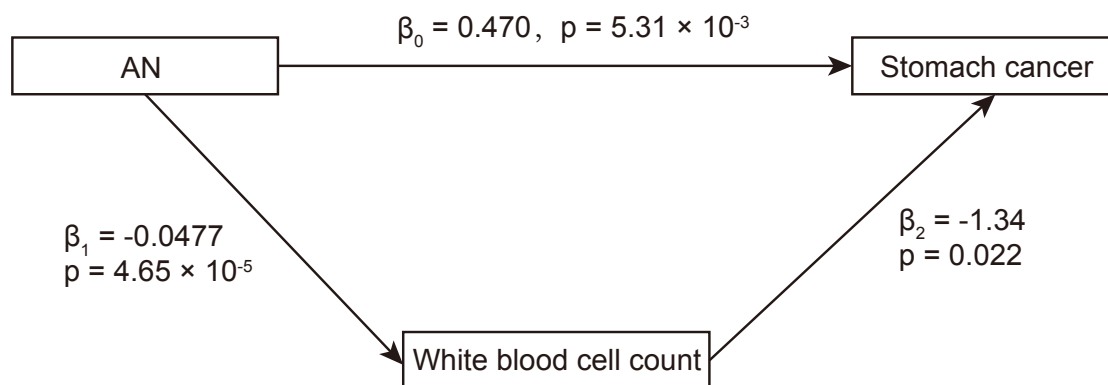
## Figures

### Figure 1



**Figure 1. Design of this study.** Univariable MR analysis was applied to investigate the causal associations between mental disorders and cancer risks. The bi-directional MR analysis was used to explore the causal effects of cancers on mental disorders. Two-step MR analysis was applied to identify the mediators for the causal associations between mental disorders and cancer risks. Three assumptions should be kept in MR analysis: (1) genetic variants must be associated with exposures, (2) genetic variants should not be associated with confounders, and (3) genetic variants must affect outcomes only through exposures, not through other pathways. Five types of mental disorders include attention deficit hyperactivity disorder (ADHD), anorexia nervosa (AN), bipolar disorder (BD), major depressive disorder (MDD), and schizophrenia (SCZ). Eighteen types of cancer include bladder cancer (BLCA), brain cancer (BNCA), brain cancer (BRCA), colon cancer (COCA), corpus uteri cancer (CPCA), esophageal cancer (ESCA), kidney cancer (KICA), liver cancer (LICA), lung cancer (LUCA), mesothelioma (MESO), ovarian cancer (OVCA), pancreatic cancer (PACA), prostate cancer (PRCA), rectal cancer (RECA), skin melanoma (SKCM), stomach cancer (STCA), testicular cancer (TECA), and thyroid cancer (THCA). Sixty clinical traits were listed in Supplementary Table 1.

1 **Figure 2**



2  
3  
4 **Figure 2. The summary of mediators of causal associations between mental**  
5 **disorders and cancers.** Two-step MR analysis was used to identify the mediators of  
6 the causal associations. The schematic diagram shows the causal relationship between  
7 exposures (mental disorders), mediators (clinical traits), and outcomes (cancers).  $\beta_1$   
8 indicates the causal effect of exposures on mediators.  $\beta_2$  indicates the causal effect of  
9 mediators on outcomes.  $\beta_0$  indicates the total causal effect of exposures on outcomes.  
10 The indirect causal effect of exposure on outcome is calculated by  $\beta_1$  multiplied by  $\beta_2$ .  
11 The proportion of indirect effect is calculated using the following formula: proportion  
12 of indirect effect =  $(\beta_1 \times \beta_2) / \beta_0$ .

Table 1. MR results of causal effects between mental disorders and cancers

Mental disorder	Cancer	Phenotype code	Dataset	Method	Number of SNP	$\beta$	SE of $\beta$	p value	OR (0.95 CI)
AN	Colon cancer	C18	UK Biobank	Weighted median	8	$-3.33 \times 10^{-3}$	$1.09 \times 10^{-3}$	$2.35 \times 10^{-3}$	0.997 (0.995-0.999)
	Mesothelioma	C45	UK Biobank	IVW	8	$-5.58 \times 10^{-4}$	$2.07 \times 10^{-4}$	$6.87 \times 10^{-3}$	0.999 (0.999-1.000)
	Pancreatic cancer	C25	UK Biobank	Weighted median	8	$-1.34 \times 10^{-3}$	$4.47 \times 10^{-4}$	$2.75 \times 10^{-3}$	0.999 (0.998-1.000)
	Pancreatic cancer	C25	UK Biobank	IVW	8	$-1.17 \times 10^{-3}$	$3.50 \times 10^{-4}$	$8.25 \times 10^{-4}$	0.999 (0.998-1.000)
	Prostate cancer	C3_PROSTATE	FinnGen	Weighted median	8	-0.332	0.080	$3.51 \times 10^{-5}$	0.717 (0.613-0.840)
	Prostate cancer	C3_PROSTATE	FinnGen	IVW	8	-0.300	0.063	$1.61 \times 10^{-6}$	0.741 (0.656-0.838)
	Skin melanoma	C3_MELANOMA_SKIN	UK Biobank	Weighted median	8	$-4.11 \times 10^{-3}$	$1.13 \times 10^{-3}$	$2.77 \times 10^{-4}$	0.996 (0.994-0.998)
	Skin melanoma	C3_MELANOMA_SKIN	UK Biobank	IVW	8	$-3.39 \times 10^{-3}$	$8.48 \times 10^{-4}$	$6.46 \times 10^{-5}$	0.997 (0.995-0.998)
	Skin melanoma	C3_MELANOMA_SKIN	FinnGen	Weighted median	8	0.412	0.146	$4.66 \times 10^{-3}$	1.509 (1.135-2.007)
	Skin melanoma	C3_MELANOMA_SKIN	FinnGen	IVW	8	0.380	0.114	$8.68 \times 10^{-4}$	1.462 (1.169-1.827)
	Stomach cancer	C3_STOMACH	FinnGen	Weighted median	8	0.559	0.211	$8.03 \times 10^{-3}$	1.749 (1.157-2.644)
	Stomach cancer	C3_STOMACH	FinnGen	IVW	8	0.470	0.169	$5.31 \times 10^{-3}$	1.600 (1.150-2.226)
BD	Pancreatic cancer	C3_PANCREAS	UK Biobank	Weighted median	63	$-7.49 \times 10^{-4}$	$2.57 \times 10^{-4}$	$3.57 \times 10^{-3}$	0.999 (0.999-1.000)
	Pancreatic cancer	C3_PANCREAS	UK Biobank	IVW	63	$-5.13 \times 10^{-4}$	$1.74 \times 10^{-4}$	$3.17 \times 10^{-3}$	0.999 (0.999-1.000)
	Pancreatic cancer	C25	UK Biobank	Weighted median	63	$-7.69 \times 10^{-4}$	$2.61 \times 10^{-4}$	$3.26 \times 10^{-3}$	0.999 (0.999-1.000)
	Pancreatic cancer	C25	UK Biobank	IVW	63	$-4.96 \times 10^{-4}$	$1.80 \times 10^{-4}$	$5.85 \times 10^{-3}$	1.000 (0.999-1.000)
MDD	Bladder cancer	C3_BLADDER	UK Biobank	IVW	65	$1.84 \times 10^{-3}$	$5.30 \times 10^{-4}$	$5.01 \times 10^{-4}$	1.002 (1.001-1.003)
	Bladder cancer	C67	UK Biobank	IVW	65	$3.06 \times 10^{-3}$	$7.55 \times 10^{-4}$	$5.04 \times 10^{-5}$	1.003 (1.002-1.005)
	Kidney cancer	C64	UK Biobank	IVW	65	$1.40 \times 10^{-3}$	$4.97 \times 10^{-4}$	$4.87 \times 10^{-3}$	1.001 (1.000-1.002)
SCZ	Pancreatic cancer	C3_PANCREAS	UK Biobank	MR Egger	200	$-7.82 \times 10^{-4}$	$2.74 \times 10^{-4}$	$4.85 \times 10^{-3}$	0.999 (0.999-1.000)
	Pancreatic cancer	C3_PANCREAS	UK Biobank	Weighted median	200	$-5.18 \times 10^{-4}$	$1.47 \times 10^{-4}$	$4.01 \times 10^{-4}$	0.999 (0.999-1.000)
	Pancreatic cancer	C3_PANCREAS	UK Biobank	IVW	200	$-3.05 \times 10^{-4}$	$9.99 \times 10^{-5}$	$2.26 \times 10^{-3}$	1.000 (0.999-1.000)
	Pancreatic cancer	C3_PANCREAS	UK Biobank	Weighted mode	200	$-8.13 \times 10^{-4}$	$2.79 \times 10^{-4}$	$3.97 \times 10^{-3}$	0.999 (0.999-1.000)
	Testis cancer	C3_TESTIS	UK Biobank	MR Egger	200	$-1.43 \times 10^{-3}$	$5.48 \times 10^{-4}$	$9.82 \times 10^{-3}$	0.999 (0.998-1.000)
	Testis cancer	C3_TESTIS	UK Biobank	IVW	200	$-5.21 \times 10^{-4}$	$1.98 \times 10^{-4}$	$8.54 \times 10^{-3}$	0.999 (0.999-1.000)
	Testis cancer	C3_TESTIS	UK Biobank	Weighted mode	200	$-1.61 \times 10^{-3}$	$5.68 \times 10^{-4}$	$4.99 \times 10^{-3}$	0.998 (0.997-1.000)

AN, anorexia nervosa; BD, bipolar disorder; MDD, major depression disorder; SCZ, schizophrenia; IVW, inverse variance weighted

Table 2. Bi-directional MR analysis between cancers and mental disorders

Cancer	Phenotype code	Dataset	Mental disorder	Method	Number of SNP	$\beta$	SE of $\beta$	p value	OR (0.95 CI)
Skin melanoma	C3_MELANOMA_SKIN	UK Biobank	BD	WM	10	-12.01	2.91	$3.70 \times 10^{-5}$	$6.08 \times 10^{-6}$ ( $2.02 \times 10^{-8}$ - $1.83 \times 10^{-3}$ )
	C3_MELANOMA_SKIN	UK Biobank	BD	IVW	10	-10.39	2.80	$2.09 \times 10^{-4}$	$3.09 \times 10^{-5}$ ( $1.27 \times 10^{-7}$ - $7.47 \times 10^{-3}$ )
	C3_MELANOMA_SKIN	UK Biobank	SCZ	IVW	10	-7.42	2.06	$3.25 \times 10^{-4}$	$6.02 \times 10^{-4}$ ( $1.06 \times 10^{-5}$ - $3.43 \times 10^{-2}$ )
	C43	UK Biobank	BD	IVW	5	-15.46	4.17	$2.08 \times 10^{-4}$	$1.93 \times 10^{-7}$ ( $5.46 \times 10^{-11}$ - $6.82 \times 10^{-4}$ )
	C3_MELANOMA_SKIN	FinnGen	SCZ	WM	11	-0.07	0.02	$2.32 \times 10^{-4}$	0.934 (0.900 - 0.969)
	C3_MELANOMA_SKIN	FinnGen	SCZ	IVW	11	-0.06	0.02	$2.71 \times 10^{-4}$	0.941 (0.911 - 0.972)

BD, bipolar disorder; SCZ, schizophrenia; IVW, inverse variance weighted

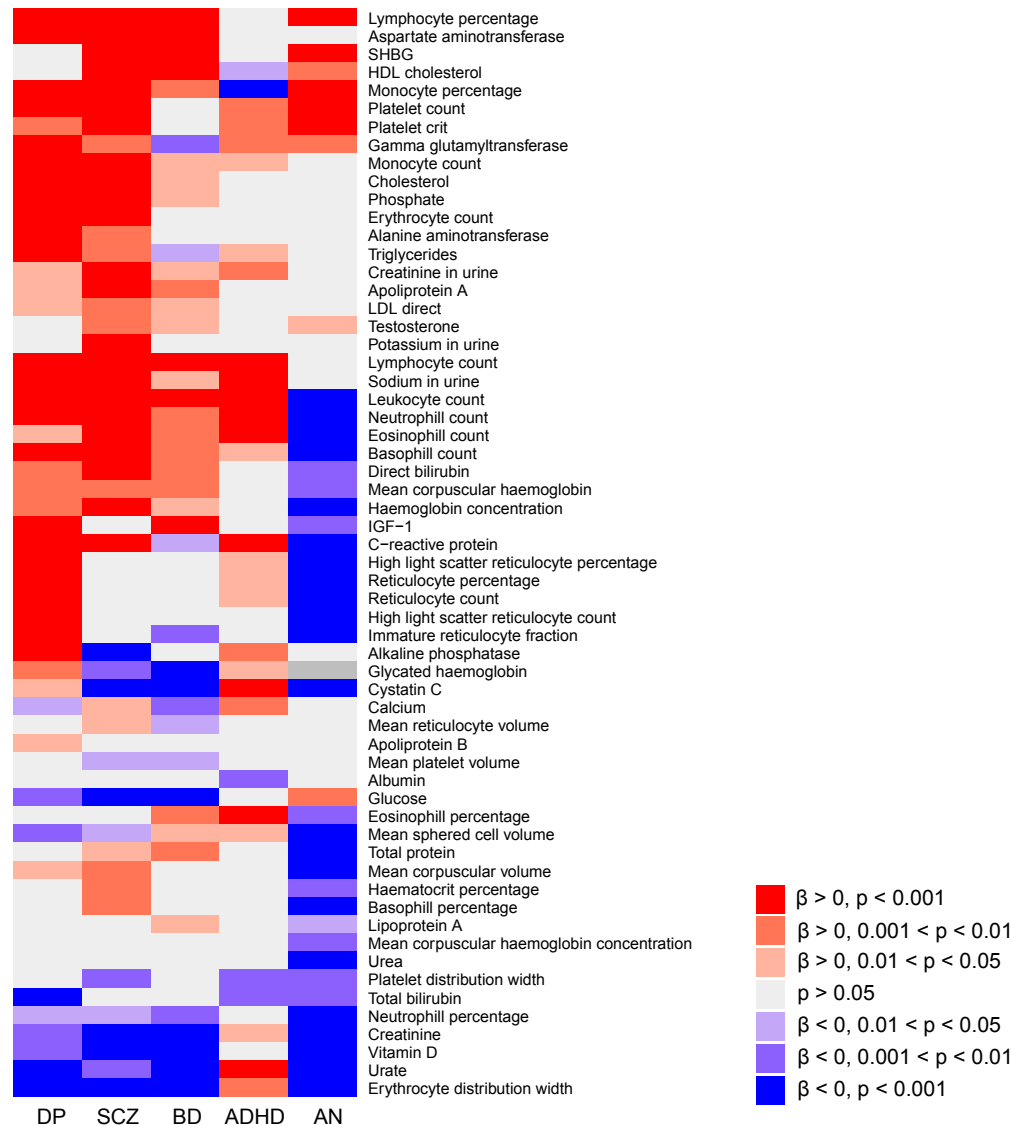
Table 3. MVMR results of causal effects between mental disorders and cancers.

Mental disorder	Cancer	Phenotype code	Dataset	Smoking		Alcohol		Insomnia		All	
				$\beta$	p value	$\beta$	p value	$\beta$	p value	$\beta$	p value
AN	Colon cancer	C18	UK biobank	$-2.016 \times 10^{-3}$	0.056	$-2.236 \times 10^{-3}$	$2.777 \times 10^{-3}$	$-1.536 \times 10^{-3}$	0.036	$-1.575 \times 10^{-3}$	0.026
	Mesothelioma	C45	UK biobank	$-6.325 \times 10^{-4}$	$9.964 \times 10^{-4}$	$-5.150 \times 10^{-4}$	$7.530 \times 10^{-4}$	$-6.422 \times 10^{-4}$	$6.074 \times 10^{-4}$	$-5.622 \times 10^{-4}$	$1.962 \times 10^{-3}$
	Pancreas cancer	C25	UK biobank	$-1.174 \times 10^{-3}$	$7.064 \times 10^{-5}$	$-1.459 \times 10^{-3}$	$4.640 \times 10^{-8}$	$-8.965 \times 10^{-4}$	0.013	$-9.036 \times 10^{-4}$	$7.748 \times 10^{-3}$
	Prostate cancer	C3_PROSTATE	FinnGen	-0.250	$2.840 \times 10^{-4}$	-0.252	$1.475 \times 10^{-5}$	-0.205	$2.740 \times 10^{-3}$	-0.200	$2.952 \times 10^{-3}$
	Stomach cancer	C3_STOMACH	FinnGen	0.399	0.065	0.516	$1.821 \times 10^{-3}$	0.317	0.034	0.313	0.042
BD	Pancreas cancer	C3_PANCREAS	UK biobank	$-5.590 \times 10^{-4}$	$5.931 \times 10^{-5}$	$-5.828 \times 10^{-4}$	$1.774 \times 10^{-5}$	$-4.998 \times 10^{-4}$	$3.289 \times 10^{-4}$	$-4.562 \times 10^{-4}$	$7.754 \times 10^{-4}$
	Pancreas cancer	C25	UK biobank	$-4.734 \times 10^{-4}$	$1.026 \times 10^{-3}$	$-4.377 \times 10^{-4}$	$2.445 \times 10^{-3}$	$-3.649 \times 10^{-4}$	0.016	$-3.559 \times 10^{-4}$	0.017
MDD	Bladder cancer	C67	UK biobank	$2.947 \times 10^{-3}$	$1.005 \times 10^{-5}$	$2.649 \times 10^{-3}$	$5.653 \times 10^{-5}$	$3.134 \times 10^{-3}$	$2.266 \times 10^{-6}$	$3.112 \times 10^{-3}$	$1.458 \times 10^{-6}$
	Bladder cancer	C3_BLADDER	FinnGen	0.236	0.108	0.230	0.110	0.216	0.151	0.238	0.112
	Kidney cancer	C64	UK biobank	$1.385 \times 10^{-3}$	$2.046 \times 10^{-5}$	$1.396 \times 10^{-3}$	$8.235 \times 10^{-5}$	$1.432 \times 10^{-3}$	$3.425 \times 10^{-4}$	$1.459 \times 10^{-3}$	$4.754 \times 10^{-4}$
SCZ	Pancreas cancer	C3_PANCREAS	UK biobank	$1.463 \times 10^{-3}$	0.017	$3.905 \times 10^{-4}$	0.463	$2.750 \times 10^{-3}$	0.021	$4.181 \times 10^{-4}$	0.408
	Testis cancer	C3_TESTIS	UK biobank	$2.527 \times 10^{-3}$	0.039	$8.580 \times 10^{-4}$	0.420	$5.748 \times 10^{-3}$	0.014	$1.102 \times 10^{-3}$	0.274

AN, anorexia nervosa; BD, bipolar disorder; MDD, major depression disorder; SCZ, schizophrenia

# Supplementary Figures

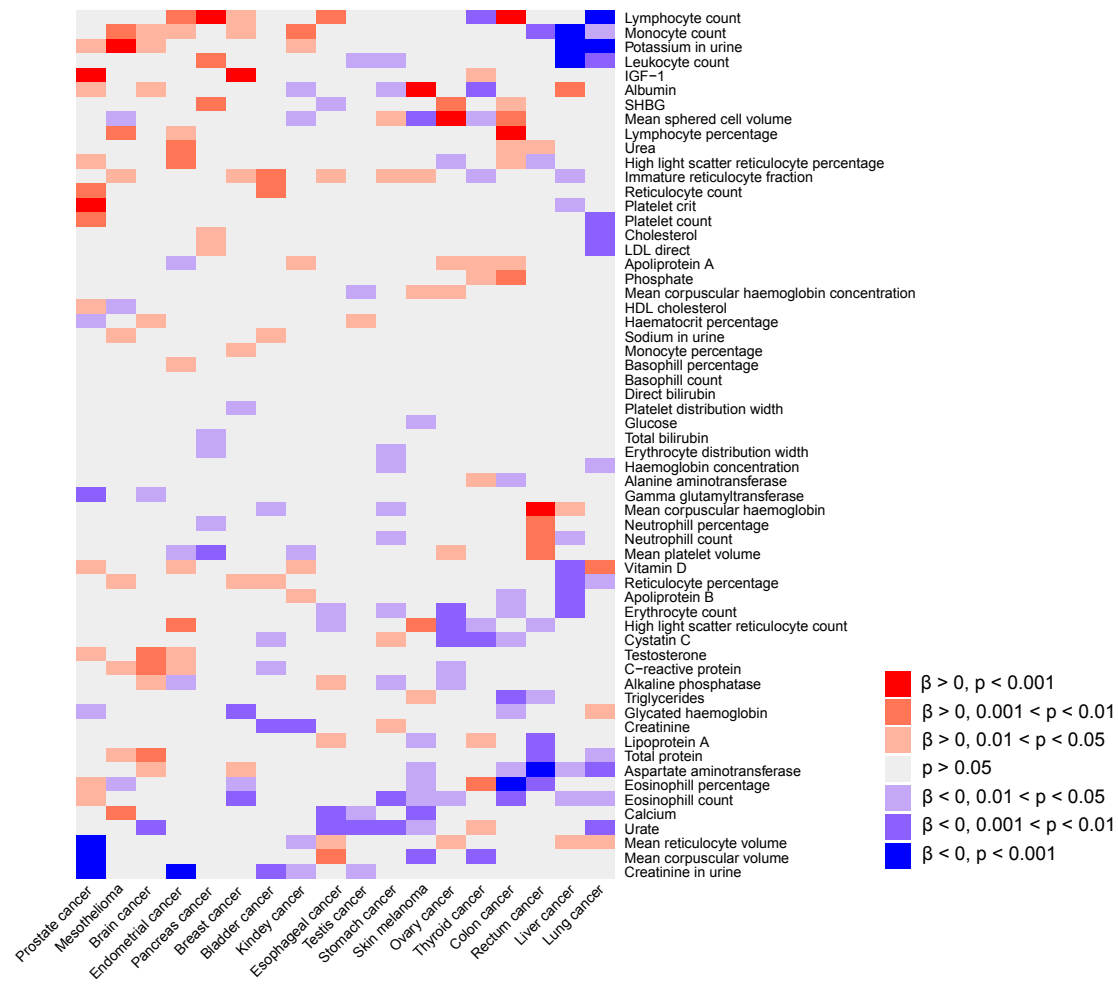
## Figure S1



**Figure S1. Causal effects of mental disorders on clinical traits.** The heatmap depicts the causal effect of mental disorders (exposures) on clinical traits (mediators). Each column represents a mental disorder, while each row represents a clinical trait. The red bricks represent the promoting causal effects ( $\beta > 0$ ). The blue bricks represent the inhibitory causal effects ( $\beta < 0$ ).



## Figure S2



**Figure S2. Causal effects of clinical traits on cancers.** The heatmap depicts the causal effect of clinical traits (mediators) on cancers (outcomes). Each row represents a clinical trait, while each column represents a type of cancer. The red bricks represent the promoting causal effects ( $\beta > 0$ ). The blue bricks represent the inhibitory causal effects ( $\beta < 0$ ).

1 **Supplementary Tables**

2 **Table S1. The GWAS summary statics used in this study.**

3 **Table S2. Causal effects of mental disorders on cancers analyzed by univariable**  
4 **MR.**

5 **Table S3. Causal effects of cancers on mental disorders analyzed by bi-directional**  
6 **univariable MR.**

7 **Table S4. Causal effects of mental disorders on cancers analyzed by multivariable**  
8 **MR.**

9 **Table S5. Causal effects of mental disorders on clinical traits analyzed by**  
10 **univariable MR.**

11 **Table S6. Causal effects of clinical traits on cancers analyzed by univariable MR.**

12

13