

# 1 Health-related quality of life in pulmonary arterial hypertension trials: a review 2 and conceptual map

3 Frances Varian<sup>1,2</sup>, Rebecca Burney<sup>1,2</sup>, Charlotte Pearson<sup>1,2</sup>, Ze Ming Goh<sup>1,2</sup>, Joseph Newman<sup>3,4</sup>,  
4 Gregg Rawlings<sup>5</sup>, Hamza Zafar<sup>1,2</sup>, David G Kiely<sup>2</sup>, AA Roger Thompson<sup>1,2</sup>, Robin Condliffe<sup>2</sup>, Mark  
5 Toshner<sup>3</sup>, Ciara McCormack<sup>6</sup>, Iain Armstrong<sup>2,8</sup>, Tessa Peasgood<sup>6</sup>, Jill Carlton<sup>6</sup>, Alex Rothman<sup>1,2</sup>  
6

- 7 1. Division of Clinical Medicine, School of Medicine and Population Health, (formerly Faculty  
8 of Medicine, Dentistry and Health), University of Sheffield, Beech hill Rd, Broomhall,  
9 Sheffield, S10 2RX, UK
- 10 2. Sheffield Pulmonary Vascular Disease Unit, Royal Hallamshire Hospital, Sheffield Teaching  
11 Hospitals NHS Foundation Trust, Sheffield, S10 2JF, UK
- 12 3. Royal Papworth Hospital, Papworth Rd, Trumpington, Cambridge, CB2 0AY, UK
- 13 4. Victor Phillip Dahdaleh Heart and Lung Research Institute, University of Cambridge, UK
- 14 5. Clinical and Applied Psychology Unit, Cathedral Court, 1 Vicar Lane, Sheffield, S1 2LT,  
15 University of Sheffield, UK
- 16 6. Department of Sport Science and Nutrition, Maynooth University, Maynooth, Co. Kildare,  
17 Ireland
- 18 7. Sheffield Centre for Health and Related Research (SchARR), School of Medicine and  
19 Population Health, University of Sheffield, Regent Court, 30 Regent Street, Sheffield, S1  
20 4DA, UK
- 21 8. Pulmonary Hypertension Association United Kingdom, Sheffield, UK  
22

23 **Corresponding author:** Alex Rothman

24 **Address:** Division of Clinical Medicine, School of Population and Health, Beech Hill Road,  
25 Sheffield, S10 2RX, United Kingdom

26 **Email:** [a.rothman@sheffield.ac.uk](mailto:a.rothman@sheffield.ac.uk)  
27

28 **Target Journal:** *European Respiratory Journal*

29 **Total number of tables/figures:** 5

30 **Word count:** 4655 (max 5000)

31 **Type of contribution:** systematic review

32 **Key words:** health-related quality of life, pulmonary arterial hypertension, outcome measures,  
33 psychometrics, quality of life measurement, systematic review  
34

35 **NOTE:** This preprint reports new research that has not been certified by peer review and should not be used to guide clinical practice.

## 36 **Conflicting interests**

37 Professor DG Kiely and Dr I Armstrong were involved in the derivation of EmPHasis-10 but  
38 remained independent in the risk of bias analysis for the COSMIN review. Professor Jill Carlton is  
39 a co-investigator for the UK EQ-5D-5L study team. Dr Tessa Peasgood is a member of EuroQol  
40 and involved in research development of the EuroQol Health and Wellbeing instrument. Other  
41 authors are not affiliated with PROMs evaluated in this review. The authors (FV/RB/CP/ZMG/JN)  
42 performing the data collection, selection and evaluation of review articles have no conflicts of  
43 interest.

44

## 45 **Funding**

46 Wellcome Trust Clinical Research Career Development Fellowship (AMKR: 206632/Z/17/Z), BHF  
47 Intermediate Fellowship (AART: FS/18/13/33281), MRC Confidence in Concepts (AMKR),  
48 Medtronic External Research Program Award (AMKR), MRC Experimental Medicine grant  
49 (AMKR/MT/DGK: MR/W026279/1), BHF Clinical Research Training Fellowship (HZ/AMKR:  
50 FS/CRTF/23/24465, MT/JN: FS/CRTF/22/24390). The research was carried out at the National  
51 Institute for Health and Care Research (NIHR) Sheffield and Cambridge cardiorespiratory  
52 Biomedical Research Centres. AR is grateful to Richard Hughes, whose generous philanthropic  
53 support has helped to make this work possible.

54

## 55 **Disclosures**

56 **AART** research funding: Heart Research UK, Janssen-Cilag Ltd, British Heart Foundation, and  
57 honoraria from Janssen-Cilag Ltd for lectures and education. **AMKR**: research funding:  
58 Wellcome Trust Clinical Research Career Development Fellowship (206632/Z/17/Z), Medical  
59 Research Council (UK) Experimental Medicine Award (MR/W026279/1), NIHR Biomedical  
60 Research Centre Sheffield, Contribution in kind: Medtronic, Abbott, Endotronix, Novartis,  
61 Janssen. Research support and consulting: NXT Biomedical, Endotronix, SoniVie, Neptune,  
62 Gradient. **DGK** has received personal funding from the NIHR Biomedical Research Centre  
63 Sheffield, research funding from Ferrer, GSK and Janssen and consulting and educational  
64 funding from Acceleron, Altivant, Ferrer, Gossamer, Janssen, MSD and United Therapeutics. **FV**  
65 has received educational funding from Janssen and is a Medical Research Council (UK) clinical  
66 fellow. **JN** Research funding: British Heart Foundation, education and travel funding Aparito Ltd,  
67 United Therapeutics, Pulmonary Vascular Research Institute. **MT**: Research funding: NIHR  
68 Biomedical Research Centre Cambridge, NIHR HTA. Personal support: GCK and Jansen. **RC**  
69 has received honoraria for speakers' fees and conference travel from Janssen. All others: none.

70

71 **Abstract**

72 **Introduction**

73 Health-related quality of life (HRQoL) in pulmonary arterial hypertension (PAH) is valued as an  
74 outcome measure by patients, clinicians and regulators. Despite the incorporation of HRQoL in  
75 trials of PAH therapies, there is limited data on their suitability, accuracy and reliability.

76 **Method**

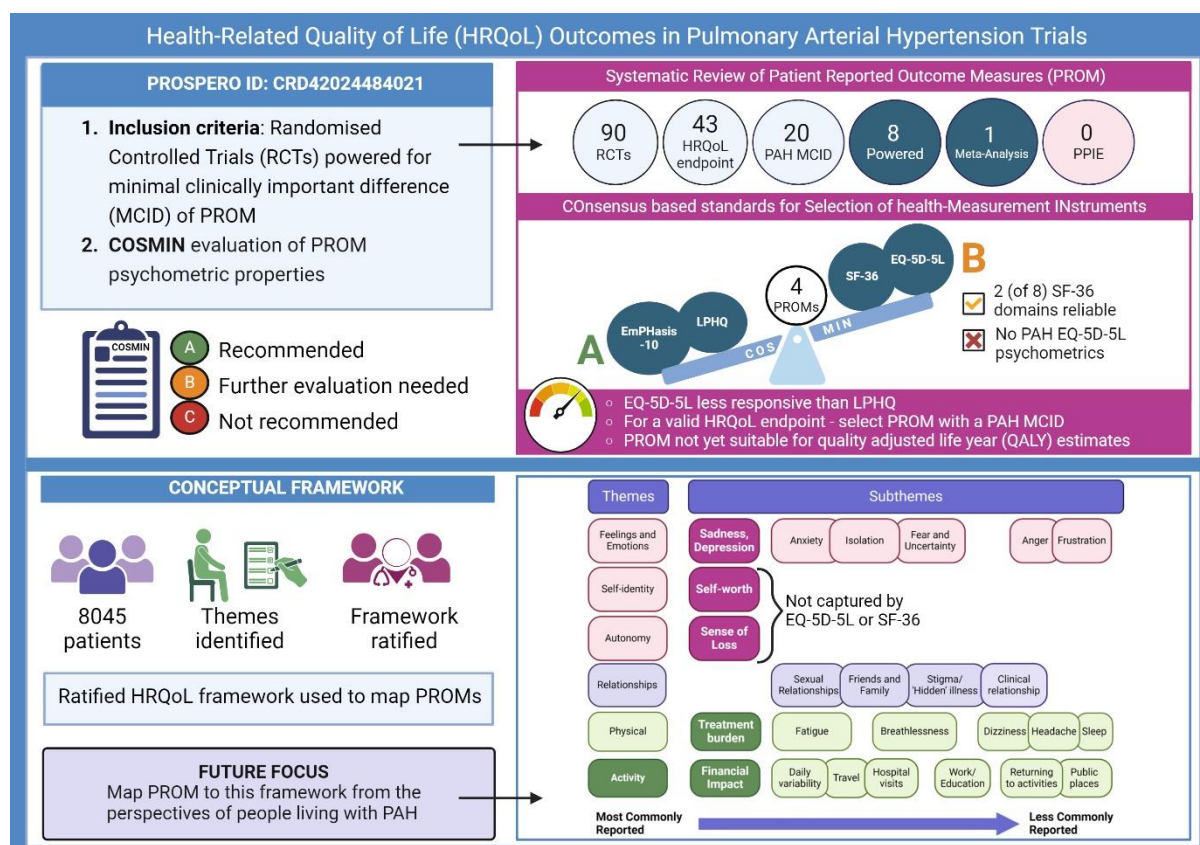
77 We report a systematic review following PRISMA guidelines (PROSPERO ID: CRD42024484021).  
78 Selection of PROMs included those powered to detect a minimal clinically important difference  
79 (MCID). Measurement properties were evaluated according to COnsensus-based Standards for  
80 the selection of health Measurement INstruments (COSMIN) and graded by recommendation  
81 for use. An a priori framework was then used to develop a ratified conceptual model from  
82 patient interviews and surveys to map the content of PROMs to HRQoL.

83 **Results**

84 Screening of 896 records was performed after removal of duplicates. Of 43 trials with a HRQoL  
85 endpoint, 20 selected an instrument with a MCID. Of these, only 8 trials were adequately  
86 powered. Three different PROMs (EuroQoL-5D-5L, Short Form-36, Living with Pulmonary  
87 Hypertension Questionnaire (LPHQ)) were used. For COSMIN measurement property  
88 evaluation, 389 records were screened and 21 were included; EmPHasis-10 was also evaluated  
89 due to its inclusion in forthcoming trials. Using COSMIN criteria EmPHasis-10 and LPHQ can be  
90 recommended (Grade A) for use in clinical trials in PAH. However, SF-36 and EQ-5D-5L (Grade  
91 B) require further study. Conceptual mapping from 8045 patients showed disease-specific  
92 instruments uniquely capture self-identity and autonomy.

93 **Conclusion**

94 To improve evaluation of HRQoL outcomes, future PAH therapy trials require appropriate PROM  
95 selection, with adequate power, and consideration of conceptual mapping.



96

97

Graphical abstract: health-related quality of life outcomes in pulmonary arterial hypertension trials

98

COSMIN Consensus-based standards for the Selection of health-Measurement Instruments,

99

EQ-5D-5L EuroQol-5D-5L; HRQoL health-related quality of life; LPHQ Living with Pulmonary

100

Hypertension Questionnaire, MCID minimal clinically important difference; PAH pulmonary

101

arterial hypertension; PROM patient reported outcome measure, QALY quality adjusted life

102

year, RCT randomised controlled trial, SF-36 36-item Short Form survey. Created with

103

BioRender.com

104

### 105 Plain language summary ( 242 of max 300)

106

Individuals living with pulmonary hypertension want to know which treatments improve their

107

quality of life related to their health. We use questionnaires to capture the experiences of

108

people living with pulmonary hypertension. Examples of this used in clinical practice are

109

EmPHasis-10. We reviewed all the clinical trials in pulmonary hypertension to see which

110

questionnaires were used to measure health-related quality of life. Some questionnaires may

111

be better at capturing the experience of living with pulmonary hypertension than others. We

112

found 20 clinical trials used a questionnaire that could detect a change in health-related quality

113

of life in pulmonary hypertension. However, only 8 trials were designed to detect a significant

114

treatment impact. We then evaluated these questionnaires against current best practice

115

guidelines to ensure they are fit for purpose. EmPHasis-10 and the Living with Pulmonary

116

Hypertension Questionnaire are preferred from the four evaluated in this study. The final part of

117

this study was to look at what quality of life means for those living with pulmonary hypertension.

118

Data from 8045 patients across the world was used to draft a health-related quality of life

119 framework. We then finalised this design with professionals and patients. This framework can  
120 be used in the future to help understand how well a questionnaire captures things  
121 important to those with lived experience of pulmonary hypertension. This will help us to better  
122 understand treatments that improve quality of life for people living with pulmonary  
123 hypertension.

124

## 125 **Background**

126

127 Endpoints in randomised controlled trials (RCT) have traditionally focussed on physiological  
128 measures including functional markers such as 6-minute walk distance (6MWD).(1,2) However,  
129 approaches prioritising clinician-derived endpoints (3–5) can undervalue the patient voice.  
130 Integral to assessment of health-related quality of life (HRQoL), patient-reported outcome  
131 measures (PROMs) are an instrument developed to capture and quantify the experience of living  
132 with a health condition. Improvement in HRQoL is an important treatment goal for clinicians,  
133 regulators and patients, yet it is often not examined in clinical trials.(6–10) Furthermore,  
134 significant advancements in the diagnosis and treatment of PAH mean people are living longer,  
135 with a focus not only on length of life, but also quality.

136

137 Comparison of the cost-effectiveness of interventions is usually based on Quality Adjusted Life  
138 Years (QALYs). To allow such a calculation, PROMs used to describe and assess HRQoL also  
139 need a value set. In combination these are termed a preference-weighted measure (PWM).  
140 Value sets are based on the views or preferences of the public and/or patients and vary by  
141 country to reflect sociocultural differences.(11,12). A PWM scores each health state described  
142 by the PROM as a single value or 'utility index' on a scale, such that 1 represents full health, and  
143 zero represents death. A score below zero indicates a health state considered worse than being  
144 dead. The index score of a health state can be combined with time spent in that state to  
145 estimate QALYs. QALYs are an important outcome for regulatory and clinical decision-making  
146 and therefore dependent upon robust PROMs.(13)

147

148 There are many challenges in validating PROMs for accurate measurement of HRQoL and for  
149 use as PWM. Condition-specific measures may offer greater sensitivity to changes in HRQoL  
150 than generic PROMs however evidence is limited.(14) The condition-specific PROMs for PAH  
151 include CAMPHOR, EmPHasis-10, Living with Pulmonary Hypertension Questionnaire (LPHQ)  
152 and PAH-SYMptoms and imPACT (PAH-SYMPACT).(15) Sensitivity to change must be interpreted  
153 with respect to being clinically meaningful. Multiple standards, including those of the US Food

154 and Drug Administration (FDA), specify that PROMs should have an established minimal  
155 clinically important difference (MCID).(16–22) A generic PROM (e.g. SF-36) may be used,  
156 providing the instrument has been validated in the population of interest to include a MCID. In  
157 addition, the choice of PROM should follow guidance developed using international Delphi  
158 approaches (18) and be evidence-based.(23) PROMs used as HRQoL outcome measures in PAH  
159 clinical trials have yet to undergo psychometric evaluation using the COnsensus-  
160 based standards for the Selection of health Measurement INstruments (COSMIN)  
161 guidance.(17,23) COSMIN guidance supports the identification of PROMs that can detect  
162 meaningful change within the health condition of interest, and aids decision-making for  
163 recommendations for use. HRQoL endpoints can be further enhanced by identifying HRQoL  
164 concepts captured by the PROM.(24) Developing a conceptual framework aids visualisation of  
165 important aspects of HRQoL for people living with PAH.(25,26)

166

## 167 **Aims and Objectives**

168

169 This is the first systematic review of PROMs for adults with PAH(15,27–29) to 1) evaluate MCIDs,  
170 and 2) compare measurement properties in accordance with COSMIN guidance; including  
171 evaluation of psychometric performance and grading recommendation for use.(19–21,30). To  
172 advance HRQoL outcomes in PAH, we undertake a literature review to develop a conceptual  
173 framework to inform relevant HRQoL constructs from the patient perspective.

174

## 175 **Methods**

176

### 177 *Systematic searches*

178 The protocol for the systematic review of PAH RCTs was registered on PROSPERO  
179 (CRD42024484021). The additional COSMIN evaluation is not independently registered.  
180 Methodology adhered to the Cochrane Handbook of Systematic Reviews of Interventions, and  
181 COSMIN guidance.(31) Reporting structure followed the Preferred Reporting Items for  
182 Systematic Reviews and Meta-Analyses (PRISMA) statement (see online supplementary figure  
183 E1) and PRISMA-COSMIN outcome measurement instruments (online supplementary figure E4  
184 and E9). MEDLINE (1980 to December 2023) and Cochrane Library (2002 to December 2023)  
185 were searched for RCTs evaluating the effectiveness of any intervention for PAH designed to  
186 improve a clinical outcome measure as determined by the FDA endpoints “feel, function or  
187 survive”. Inclusion and exclusion criteria are registered on PROSPERO. After removal of

188 duplicates, one author (FV) screened the titles and abstracts of articles for relevance before  
189 reviewing the full text for eligibility. Where there was uncertainty about the relevance of an  
190 article, a second author (JN) reviewed the title and abstract/main text. A third author was  
191 available to adjudicate discrepancies. This process was repeated for the second PRISMA-  
192 COSMIN search and reporting structure followed (supplementary figure E3 and E4). PRISMA-  
193 COSMIN studies included pulmonary hypertension (PH) comprising group 1 and group 4  
194 patients to maximise psychometric property evaluation. Forward and backward searches were  
195 performed on eligible articles for both searches, and citation searching performed on  
196 systematic reviews identified.

197

### 198 *Data Extraction*

199 Five authors (FV, RB, CP, ZMG, JN) extracted information independently from all RCTs using a  
200 pre-determined template. This included sample and trial characteristics, primary and  
201 secondary outcome measures and results, and details of HRQoL PROMs used. Primary and  
202 secondary endpoints were categorised into measures of how a patient ‘feels’, ‘functions’ or  
203 ‘survives’ as per FDA recommendations for clinical trial endpoints.(32) HRQoL endpoints were  
204 classified as ‘feel’ (e.g. EQ-5D-5L), ‘function’ (e.g. any form of exercise parameter and World  
205 Health Organisation Functional Class (WHO FC)) and ‘survive’ (inclusive of clinical worsening  
206 events and mortality and not restricted to survival analyses).

207

### 208 *Risk of Bias and Strength of Evidence*

209 Two authors (ZMG, RB) assessed the systematic review risk of bias (RoB) using the Cochrane  
210 RoB2 Toolkit, and strength of evidence according to the Grading of Recommendations  
211 Assessment Development Evaluation (GRADE) criteria. The COSMIN RoB checklist was  
212 completed by two other authors (FV & CP). (30,31) Any disagreements were discussed until  
213 consensus was reached. Further bias assessment (e.g. Egger’s) was not appropriate due to the  
214 large heterogeneity of study interventions and low number of PROM instruments limiting  
215 interpretation. A summary of the overall strength of PROM recommendation is made by grading  
216 into one of three categories: (A) PROM can be trusted for use with sufficient evidence of  
217 psychometric properties; (B) PROM has potential to be recommended for use but insufficient to  
218 meet A or C categories; (C) PROMs with high-quality evidence that a measurement property is  
219 insufficient and therefore should not be recommended for use.(17,33,34). A description of  
220 terms used in the COSMIN evaluation is available in supplementary table E5.

221

## 222 *Data Analysis*

223 It is recommended that the MCID is considered for sample size calculations for comparing  
224 HRQoL outcomes.(19–21) To determine whether trials were sufficiently powered for the chosen  
225 PROM, the MCID for each instrument was obtained (supplementary table E1). If data were  
226 unavailable specifically for PAH, a MCID was searched for respiratory conditions (1) and heart  
227 failure (2) to maximise PROM inclusion. (27,35–40) A second author (JN) confirmed absence of  
228 MCID using search criteria in PubMed and the PROMs Data Archive: [instrument\_name] AND  
229 [MCID OR MID OR Minimal].

230  
231 Computation of MCID mean and standard deviation in GPower v3.1 was used to estimate  
232 sample size calculations from a two-independent means model for 80% power, 5%  
233 significance, one-tailed test. Trials insufficiently powered to detect a meaningful change in  
234 HRQoL as defined by the MCID calculations were excluded from analysis. The MCID for six-  
235 minute walk distance (6MWD) was defined at a threshold of 33m, as correlated with the  
236 physical functioning item of the Short-Form 36 (SF-36).(41,42) Meta-analysis was undertaken  
237 per therapy and by PROM and was calculated in SPSSv28.1.(43)

## 238 239 *Scoping review for conceptual framework and patient and public involvement and engagement* 240 *(PPIE)*

241 A scoping literature review was conducted independently by two authors (FV & RB) to map  
242 HRQoL concepts on to PROMs in PAH.(21,22,44). An a priori framework from generic health and  
243 wellbeing instruments and HRQoL model was used to inform the PAH HRQoL conceptual  
244 framework.(25,45) Published studies using primary and secondary analytical methods and grey  
245 literature, such as surveys asked by Pulmonary Hypertension Associations, were included  
246 (supplementary table E6).(6–9,46–53) To corroborate previous synthesis from a qualitative  
247 systematic review,(54) a random selection of four publications was appraised in detail for  
248 blinded thematic content agreement prior to evaluation of the synthesised systematic review.  
249 Themes were not duplicated in final synthesis. Subthemes were extracted and seven a priori  
250 themes considered(25,45); final subthemes were weighted from most to least commonly  
251 reported. Key professional stakeholders from centres in the UK and Ireland then ratified the  
252 framework followed by PPIE obtained from representatives from Pulmonary Hypertension  
253 Association UK (PHA UK) and patient volunteers registered within Sheffield’s local PPIE PAH  
254 network. The form asked to “consider what quality of life means” before reviewing the  
255 conceptual framework for anything missing. Participation was entirely voluntary without



256 reimbursement. PROMs from the COSMIN review were then mapped to the conceptual  
257 framework to visualise instrument scope.

258

## 259 **Results**

260

261 *Systematic review of valid HRQoL endpoints and their psychometric properties*

262

263 The systematic search identified 896 unique records. After screening, 178 remained for full-text  
264 review. Overall, 90 potentially eligible RCTs were identified with a clinical endpoint. 73% (n=66)  
265 included pharmacological interventions which were categorised into ‘feel’, ‘function’ or  
266 ‘survive’ and these were mapped (supplementary figure E2). This demonstrated a  
267 predominance of functional endpoints, with an increasing trend toward emphasis on survival.  
268 The scope of HRQoL or ‘feel’ was limited to secondary endpoints.

269 In total, 43 RCTs with a HRQoL endpoint were considered for final inclusion (supplementary  
270 table E2). All studies showed some risk of bias (supplementary table E3). The strength of all  
271 studies with a HRQoL endpoint was ‘moderate’ (supplementary table E4). There was no  
272 evidence of patient involvement in selection of PROM in any PAH RCT (supplementary table  
273 E2).(18)

274

275 Regarding condition-specific PROMs, a valid MCID for EmPHasis-10, LPHQ and CAMPHOR was  
276 found, but not for PAH-SYMPACT (55). All available MCID values and methods of derivation are  
277 included in supplementary table E1. [Figure 1](#) shows that 20 of the 43 RCTs with a HRQoL  
278 endpoint selected an instrument with an MCID for PAH. Of these, only 8 trials met the full  
279 inclusion criteria with adequate power to detect a meaningful change in HRQoL (Table 1).(56–  
280 99) PROMs meeting final inclusion (Table 1) were SF-36, EQ-5D-5L, LPHQ and Minnesota Living  
281 with Heart Failure (MLWHF). A utility index is available for EQ-5D-5L for the PAH population, but  
282 not a specific MCID. A sample size was therefore conservatively estimated from a comparable  
283 6MWD of 35m from an interstitial lung disease population to maximise inclusivity.(100) All trials  
284 powered for HRQoL selected 6MWD as their primary endpoint (Table 1). Bosentan (EARLY)(86)),  
285 IV epoprostenol (PACES)(88), and inhaled treprostinil (TRIUMPH-I)(85) did not meet their  
286 primary endpoint and showed no improvement in the SF-36 physical functioning domain (Table  
287 1). Significant improvements in 6MWD for ambrisentan (ARIES2)(101) and exercise (EU-TRAIN-  
288 01)(102) were reported, however only the MCID was met for the role-physical domain of SF-36  
289 in EU-TRAIN-01(102).

290  
291 PATENT-1(103) and PATENT-2(104) (riociguat vs placebo) were the only RCTs available for  
292 combined meta-analysis (Figure 2). Two PROMs (EQ-5D-5L and LPHQ) were completed by the  
293 same patients. EQ-5D-5L overall appeared less sensitive to changes in HRQoL (Cohen's d  
294 ES=0.24, SE=0.08, p<0.001) compared to LPHQ (ES=-0.48, SE=0.11, p<0.001) (Figure 2).  
295 Although an exploratory endpoint, it is unclear which country-specific value sets was used for  
296 EQ-5D-5L as recommended by reporting practices.(12,105–108) All trials reported statistical  
297 significance (p<0.05) between arms rather than MCID, requiring additional interpretation as a  
298 valued endpoint. The open-label extension study supported a sustained improvement in  
299 HRQoL with riociguat compared to placebo as measured by LPHQ.(104) However this was not  
300 true for all dose regimes. There was no significant change in HRQoL for the group receiving  
301 2.5mg dose of riociguat as measured by EQ-5D-5L (Figure 2)(109). EQ-5D-5L was sensitive to  
302 change in the 1.5mg subgroup, which had a statistically higher proportion of patients in WHO  
303 FC III compared to II (Fisher's exact p<0.05) and this was also clinically meaningful (MCID is  
304 +0.017) at 12 months (0.13±0.24) compared to the 2.5mg group (+0.06±0.24)).(104)

305  
306 For COSMIN evaluation, 369 eligible articles were screened for psychometric properties with  
307 additional citation searching (n=20) from 3 systematic reviews. EmPHasis-10 was considered  
308 relevant for inclusion as recruitment for two RCTs is underway and has an estimated  
309 MCID.(110,111) 21 studies demonstrated measurement properties (supplementary figure  
310 E4).(15,35,42,112–129) MLWHF for Pulmonary Hypertension (MLWHF-PH)(113) was later  
311 renamed LPHQ and therefore these instruments are pooled for evaluation.(15,35,112,113) SF-  
312 36 is available as either a PWM or PROM. The MCID for SF-36 is not specifically reported for  
313 mental health, pain, general health and role-emotional domains but is available for physical  
314 functioning, role-physical, energy-fatigue and social functioning.(115) EQ-5D-5L is also PWM  
315 used in PAH,(130) and the instrument compared in derivation of LPHQ.(35) However we found  
316 no studies validating psychometric properties of EQ-5D-5L in adults with PH, limiting further  
317 review. All RCTs identified from the initial systematic review were included within the COSMIN  
318 review as a measure of PROM 'responsiveness'.(17,30,33,34)

319  
320  
321  
322

*PROM suitability for the PAH population in accordance with COSMIN guidance*

323 PROM design includes how comprehensively the instrument covers HRQoL for the population  
324 of interest, also known as content validity. A description of terms structuring COSMIN analysis  
325 is available in supplementary table E5. The characteristics and measurement properties of the  
326 PROMs selected are outlined in [Table 2](#) with full details in supplementary tables E7 and E8. For  
327 adequate content validity, all instruments require post-hoc cognitive interviewing with patients  
328 and experts. LPHQ was the only instrument to perform post-hoc saturation analysis to confirm  
329 the relevance of the final instrument from the patient's perspective. No cognitive interviewing  
330 for content validation in the PAH population has been performed for SF-36 or EQ-5D-5L.

331  
332 Statistical analysis must be performed in an appropriate sample size to evaluate the internal  
333 structure of the PROM. Appropriate statistical analysis for the 'model fit' must also be  
334 reported.(131) Internal structure comprises *structural validity*, determined by appropriate  
335 statistical analysis, *internal consistency*, defined by response agreement between items (e.g.  
336 Cronbach's alpha  $\geq 0.7$ ), and *measurement invariance*, which determines how well the PROM  
337 performs across different groups (i.e. potential response variations e.g. age, gender, BMI).  
338 Statistical analysis validating the psychometric structure of SF-36 in PH was not reported and  
339 was incomplete for LPHQ and EmPHasis-10. Internal consistency is well evidenced for LPHQ,  
340 EmPHasis-10 and SF-36. This is not relevant for EQ-5D-5L as items are not inter-related, with  
341 only 1 item per domain (Table 2).(132) No studies adequately considered measurement  
342 invariance. One study suggested EmPHasis-10 may vary by demographic and clinical  
343 characteristics,(119) but there is an absence of further testing. While multiple translations are  
344 available for EQ-5D-5L and SF-36, there is insufficient psychometric validation (*cross-cultural*  
345 *validity*)(133) to support use of these languages in the PAH population (Table 2, online  
346 supplementary table E8). EmPHasis-10 demonstrates strong linguistic  
347 validation.(121,123,127,134) Developed in the UK and Ireland, EmPHasis-10 is the only PROM  
348 validated cross-culturally in US, China, Japan, Italy and Turkey.(118,119,121,123,126,127)  
349 LPHQ is available in English only, though was derived in the US, France and Germany.

350  
351 PROM structure considers how the questionnaire should be scored and interpreted. Each score  
352 should be *structurally validated* using psychometric statistical analyses to check accuracy.  
353 LPHQ has a multifactor structure with physical, emotional and total scores(35), as is SF-36 with  
354 eight domains and physical and mental component scores, whereas EmPHasis-10 was derived  
355 as a unidimensional structure (i.e. a single, total score)(118). Reporting of the structural validity  
356 of these PROMs does not meet current requirements (supplementary table E8).(23) However, a

357 recent analysis of EmPHasis-10 structured into three scoring components (breathlessness  
358 (three items), fatigue (three items) and independence (four items)) does meet COSMIN  
359 requirements.(125) Further evaluation is required to consider the clinical relevance of  
360 interpreting EmPHasis-10 in this way.

361  
362 *Test-retest reliability* is essential for defining the natural score variation of the PROM during a  
363 period of stability. If the mean variation exceeds the MCID, then the PROM becomes invalid.  
364 Test-retest reliability is indeterminate for LPHQ and SF-36, with limited evaluation of the  
365 smallest detectable change or limits of agreement (supplementary table E8). Only two SF-36  
366 domains (physical functioning and general health) meet adequate test-retest reliability in PH,  
367 with wide confidence intervals and standard errors of measurement in others raising  
368 concerns.(114,115)

369  
370 *Hypothesis testing* comprises the final COSMIN analyses to evaluate 1) how well the PROM  
371 correlates with other instruments (*convergent validity*), 2) discriminates subgroups e.g. WHO  
372 FC (*construct validity*) and 3) responds to intervention (*responsiveness*). It is the most widely  
373 tested psychometric property (supplementary table E8). All instruments show correlation with  
374 others. *Criterion validity* additionally assesses sensitivity and specificity of the instrument;  
375 however, it is challenging to achieve without a 'gold standard' measure. Performance of  
376 instruments across PAH subgroups requires improvement for SF-36 and EQ-5D-5L. The SF-36  
377 physical component score correlates with 6MWD ( $r=0.62$ ,  $p<0.001$ );(42) however, other SF-36  
378 domains and component scores show no or inconsistent relationship with WHO FC and  
379 6MWD.(42,112,115,129) LPHQ appears to correlate well with WHO FC ( $r=0.61$ )(128) but  
380 response to changes in WHO FC requires further evaluation.(35,112,128) EmPHasis-10 has  
381 been shown to accurately discriminate WHO FC, and has good correlation with 6MWD, however  
382 treatment responsiveness lags behind, with much-anticipated RCTs  
383 underway.(118,119,122,124) Snapshot haemodynamics have yet to show strong correlation  
384 with any PROM.(42,112,113,117–119,123).

385  
386 Summary COSMIN instrument recommendations are grade A for LPHQ and EmPHasis-10 and  
387 grade B for SF-36 and EQ-5D-5L. No PROMs received a grade C recommendation. However the  
388 overall quality of evidence for LPHQ and Emphasis-10 is low, and for SF-36, very low (Table 2).

389 *Mapping the HRQoL conceptual framework*

390

391 Improving HRQoL matters to people living with pulmonary hypertension. Surveys report this as  
392 the most important treatment focus (52-83%) over other outcomes such as life expectancy (33-  
393 75%, n=1196, UK, Canada).(10,46) HRQoL concepts of interest may vary between clinical and  
394 trial applications,(21,30,44,135) however, recognising their relationship to PROMs is key for  
395 appropriate instrument selection. A conceptual framework developed from the Wilson and  
396 Cleary and subsequent models(25,26,45) was inductively modified to reflect concepts of  
397 HRQoL. These subthemes (e.g. ‘stigma’) were identified from combined questionnaires and  
398 surveys of 8045 patients from around the world.(14,119,136) Demographics (where available)  
399 were reflective of the disease prevalence with a female predominance (79%, n=4700). Average  
400 age of patients was 55 years (range 24-80 years) and 88% self-reported to be Caucasian  
401 (supplementary table E6).

402  
403 Figure 3A summarises the conceptual framework, with six themes and 25 subthemes identified.  
404 The framework was ratified by 6 PH consultants, 2 PH clinical fellows, 1 clinical nurse specialist,  
405 1 physiotherapist, 1 clinical psychologist and PPIE obtained from two PHA UK representatives  
406 and five patients with relevant demographic representation. One patient commented  
407 specifically that they “never really thought about quality of life before their diagnosis” and they  
408 “think mental health is a big thing and this is affected differently and sometimes unexpectedly  
409 each day”. No additional themes or subthemes were identified.

410  
411 The most frequently reported concepts in Figure 3A are presented in bold, with most-to-least  
412 common left-to-right and those overlapping representing similar weighting. The most reported  
413 impacts were activity, sadness/depression, self-worth, sense of loss, treatment- and financial  
414 burden. Cultural variation was evident for this latter subtheme and more commonly discussed  
415 in surveys and interviews of those living in Canada, USA and China compared the UK and  
416 Europe.

417  
418 PROMs were then mapped onto the conceptual framework (Figure 3B). No single PROM covers  
419 all subthemes directly. EmPHasis-10 and LPHQ cover all main themes. Two commonly reported  
420 themes, self-identity and autonomy, are not specifically captured by EQ-5D-5L or SF-36. In  
421 addition, EQ-5D-5L does not capture impact on relationships. LPHQ is the only PROM to  
422 directly ask about treatment burden by including items on side effects but may also include  
423 items that are less impactful in this patient group (e.g. diet).

424

## 425 Discussion

426

427 This is the first systematic review to evaluate meaningful changes in HRQoL in RCTs in patients  
428 with PAH. Based on rigorous methodology using COSMIN guidance both EmPHasis-10 and  
429 LPHQ receive a grade A recommendation for use, whereas SF-36 and EQ-5D-5L receive a grade  
430 B recommendation. Of these PROMs EmPHasis-10 provides the broadest scope internationally  
431 and is validated in three continents. Whilst SF-36 is the most frequently used PROM in PAH  
432 RCTs to date, only 2 of 8 SF-36 domains meet current psychometric guidance. Currently no  
433 PROMs used in PAH RCTs are adequate for PAH-QALY calculation. To aid future work, we  
434 developed a conceptual framework which allows visualisation of what PROMs measure to  
435 capture aspects of HRQoL important to people living with PAH. Six themes and 25 subthemes  
436 were identified by researchers and ratified in the conceptual framework. Whereas both  
437 EmPHasis-10 and LPHQ likely capture all major themes, two major themes (self-identity and  
438 autonomy) are unlikely to be captured by SF-36 and EQ-5D-5L. Further study mapping the  
439 PROMs to this conceptual framework from the patients' perspective is required.  
440 Complementary psychometric approaches will aid future selection of the most appropriate  
441 PROMs to measure HRQoL outcomes in clinical trials.

442

443 *A PROM with a MCID is a meaningful trial endpoint.*

444

445 PROMs should be resilient to the day-to-day variability in HRQoL. There will be a natural change  
446 in score, without a significant change in HRQoL and this may vary depending on disease  
447 severity. Meaningful change in HRQoL therefore may not equate to statistical difference.(137)  
448 The MCID for PAH PROMs has traditionally been anchored using the SF-36 physical functioning  
449 domain to changes in 6MWD. CAMPHOR is the only PROM to include PAH patient opinion in  
450 derivation of a MCID.(122,138,139) As illustrated by the conceptual framework, 6MWD alone is  
451 unlikely to adequately benchmark all aspects of change in HRQoL.(139,140) There is further  
452 inaccuracy in over-simplifying differences based on average distributions.(137,141) Multiple  
453 MCIDs should ideally be anchored over many individual timepoints to improve  
454 sensitivity.(137,139,140) Other factors influencing MCID include direction of change  
455 (improvement or deterioration) and individual baseline value. Neither of which may be  
456 synonymous with predicted disease outcome.(141) While highly valuable for trial endpoints,  
457 MCIDs evaluated should be interpreted with caution, and within the context of measurement  
458 error.(16,137,139,141) Measurement error includes PROM scores undertaken during stable

459 conditions (*test-retest reliability*). SF-36 has shown the variable performance in this regard. As  
460 the most widely adopted PROM in PAH RCTs, five of the eight domains have a valid MCID  
461 however only two (physical functioning and general health) meet adequate test-retest  
462 reliability.

463

464 *Psychometric measurement properties validate HRQoL outcomes*

465

466 HRQoL is a multifactorial construct with diurnal, daily and lifelong variability. Perception varies  
467 across the patient's lifespan. Changes in values and priorities (*response shift*) depends upon  
468 'pre-diagnosis', 'transitioning through diagnosis' and 'duration living with PH'. The latter group  
469 reportedly face challenges with recognising disease progression and monitoring the  
470 condition.(51,142) Registry data shows consistent performance of EmPHasis-10 in patients  
471 with recent diagnoses (<6 months) but other time points are lacking.(119) For consistency, a  
472 PROM must perform regardless of 'time since diagnosis'. This is known as *response shift and*  
473 has not been studied in PROMs for people living with PAH to date.

474

475 Further complexity is introduced by variations in HRQoL perceptions with age, gender, and  
476 disease severity.(54) Age and gender have been shown to influence PROMs.(135,143) These  
477 factors require further assessment in the PAH population.(118,136,143,144) Perceptions and  
478 response to limitations in activity also vary with individual coping strategies and personality  
479 types.(142) Responses may therefore differ depending on the choice of PROM. No PROMs used  
480 in PAH trials have specifically addressed variations in activity perceptions in longitudinal  
481 subgroup analyses. Understanding PROM performance also requires consideration of PROMs  
482 across subgroups (e.g. WHO FC)(137), known as *measurement invariance*. As shown by the  
483 meta-analysis, EQ-5D-5L may be less responsive to changes in WHO FC II compared to WHO  
484 FC III, potentially underestimating the HRQoL treatment benefit in this subgroup. Similar  
485 comparison was shown with EQ-5D-5L and CAMPHOR.(145) While exemplifying the importance  
486 PROM selection, combining PROMs in a trial setting offers useful comparison of  
487 responsiveness.

488

489 Development of the conceptual framework helps recognise important HRQoL captured by  
490 PROMs. All PROMs capture limitations in activities, however two major themes identified (self-  
491 identity and autonomy) are unlikely to be captured by SF-36 and EQ-5D-5L (Figure 3B). While  
492 LPHQ has received critique for poor symptom saturation,(27,35) the conceptual framework

493 does not support omitted symptoms of ‘palpitations’ or ‘problems with limbs’ as impactful.(6–  
494 9,35,46–52) Moreover, while some symptoms may be less relevant (e.g. diet/appetite), ‘time in  
495 hospital’ and ‘side effects’ are uniquely captured. LPHQ is also the only instrument to consider  
496 financial impact, which may have cultural relevance.(7,9,47,49) It is unclear whether PROMs  
497 adequately capture treatment burden (a key subtheme) in PAH, or whether this cross-loads  
498 with other concepts. Future cognitive interviewing should consider utilising the conceptual  
499 framework to elicit patient interpretation of PROM questions, in addition to modelling  
500 perceptions across the disease course. Mapping the PROM questions to framework will also  
501 establish likely relationships to concepts, helping to solidify PROM content validity from the  
502 patients’ perspective.

503

504 *How do we advance HRQoL endpoints in PAH?*

505

506 PROMs offer a descriptor for the patient voice, and this should be their primary purpose.  
507 Delivering a valid HRQoL trial endpoint requires appropriate PROM selection with a patient-  
508 centred MCID, and prioritisation of PPIE preferences which are reported in line with  
509 recommendations.(18) Greater consistency in PROM selection will improve knowledge of  
510 therapeutic outcomes according to lived patient experience. As a minimum, PAH clinical trials  
511 should select PROMs with grade A recommendation for use. PROMs further offer health  
512 economic evaluation to support regulatory decision-making. Following COSMIN review, neither  
513 generic PWM (EQ-5D-5L and SF-36) can be recommended, and therefore a condition-specific  
514 PWM with strong psychometric properties is preferentially considered.(145,146)  
515 CAMPHOR(147) is currently the only condition-specific PWM with a value set however, this is  
516 underutilised in RCTs and yet to undergo COSMIN evaluation. Future development of PWMs in  
517 PAH should focus on either improving PROMs with a B grade recommendation and/or  
518 developing a value set for those with a grade A recommendation. This will support robust  
519 evaluation for QALY outcomes.

520

521

522

## 523 **Strengths and Limitations**

524

525 Our systematic review of recent publications was designed with rigour, using multiple  
526 reviewers, a minimum of dual coders, and triangulation to enhance quality. Nevertheless, data



527 informing the conceptual framework was not analysed at source and therefore may be subject  
528 to bias. However, following UK PPIE opinion, there were no additional concepts added to the  
529 framework and based on the authors experience in international studies in PAH, we consider  
530 the framework to be relevant for other countries. As with adaptation of PROMs cross-culturally,  
531 future research is required to ensure individual concepts are applicable to the chosen area.  
532 This process could offer further understanding of cultural differences in people living with PAH.  
533  
534 Analysis of instrument power was based on MCID; although, as discussed, this may be  
535 inadequate, potentially over- or under-estimating the RCTs included. Furthermore, these  
536 estimates are calculated for between-group rather than within-patient differences and  
537 insufficient to base regulatory decisions.(16) However, this is currently the only available  
538 measurement criteria for estimating sufficient responsiveness, and useful for calculating study  
539 size.(17,33,34) CAMPHOR has an MCID but did not meet inclusion due to insufficiently  
540 powered historical or forthcoming RCTs. As this is currently the only PAH-specific  
541 PWM,(145,147) independent COSMIN analysis is warranted. Finally, it is recognised that all  
542 PROMs considered in this analysis were developed prior to COSMIN guideline  
543 recommendations, and therefore some of the methodological concerns may be overstated due  
544 to missing publication details rather than instrument flaws. Despite these challenges and low  
545 quality of evidence, two instruments still achieved a grade A recommendation, showing  
546 promise for future HRQoL endpoints.

547

## 548 **Conclusion**

549

550 Global use of suitable PROMs in PAH occurred in 20 of 43 RCTs. Interpretation of HRQoL  
551 requires a MCID, yet only 8 trials were adequately powered to detect a meaningful change. All  
552 MCIDs require further validation, taking into consideration directionality and disease severity.  
553 Language availability is not necessarily concordant with cultural validity, and this should be  
554 considered in international and multi-centre RCT settings. LPHQ outperforms EmPHasis-10  
555 regarding responsiveness whereas EmPHasis-10 demonstrates the strongest reliability and  
556 cross-cultural validity, however both can be recommended for use. SF-36 and EQ-5D-5L should  
557 be used with caution until further examination in people living with PAH. The conceptual  
558 framework, ratified without iterations, shows LPHQ and EmPHasis-10 are more likely to capture  
559 autonomy and self-identify. This should be developed further by mapping PROM items to the  
560 framework from the patient perspective. Concurrent cognitive interviewing is required for all

561 PROMs to strengthen content validity. HRQoL outcomes should focus on appropriate PROM  
562 selection, powered for a valid MCID, with the aim of continued psychometric development and  
563 health economic analyses.

Study	N=	Demographics (Age (y), Female (%))		Intervention	PROM <sup>†</sup>	Additional Endpoints	Primary outcome met?
		Control	Therapy				
EU-TRAIN-01 (2021)(102)	129	55±12.7 77.6%	52.3±12.4 69%	Exercise training	SF-36 (all)	Primary 6MWD Secondary WHO FC, CPET	Yes
PATENT-2 (2015) (109,148)	396	49±16 80%	49±16 80%	Riociguat	LPHQ EQ-5D-5L	Primary 6MWD Secondary CWE, NTProBNP, WHO FC, haemodynamics	Yes
PATENT-1 (2013)(149)	443	51±17 78%	51±17 79%	Riociguat	LPHQ EQ-5D-5L	Primary 6MWD Secondary CWE, NTProBNP, WHO FC, haemodynamics	Yes
TRIUMPH-I (2010)(150)	235	52(18-75) 82%	55(20-75) 81%	Inhaled Treprostinil	MLWHF-PH	Primary 6MWD	No
EARLY(2008) (151)	185	44±17 63%	45±18 76%	Bosentan	SF-36 (all)	Primary 6MWD, PVR Secondary CWE, NTProBNP, haemodynamics	No
ARIES2 (2008)(101)	394	51±14 68%	51±15 78%	Ambrisentan	SF-36 (physical)	Primary 6MWD Secondary CWE	Yes
PACES (2008) (152)	267	48±13 77%	48±13 82%	Sildenafil + IV Epoprostenol	SF-36 (all)	Primary 6MWD	No
AIR (2002)(153)	203	53±12 68%	51±13 68%	Inhaled Iloprost	EQ-5D and EQ-VAS	Primary 6MWD Secondary NYHA, PVR, CWE	Yes

*Table 1. Characteristics of studies powered for HRQoL*

6MWD six-minute walk distance, CPET cardiopulmonary exercise test, CWE clinical worsening events, EQ (EuroQoL)-5D-5L, EQ-VAS EuroQoL visual analogue scale, HRQoL health-related quality of life, NTProBNP N-terminal Pro-Brain Natriuretic Peptide, NYHA New York Heart Failure Association functional score, PROM patient-reported outcome measure, PVR pulmonary vascular resistance, WHO FC World Health Organisation Functional Class  
<sup>†</sup>All secondary endpoints

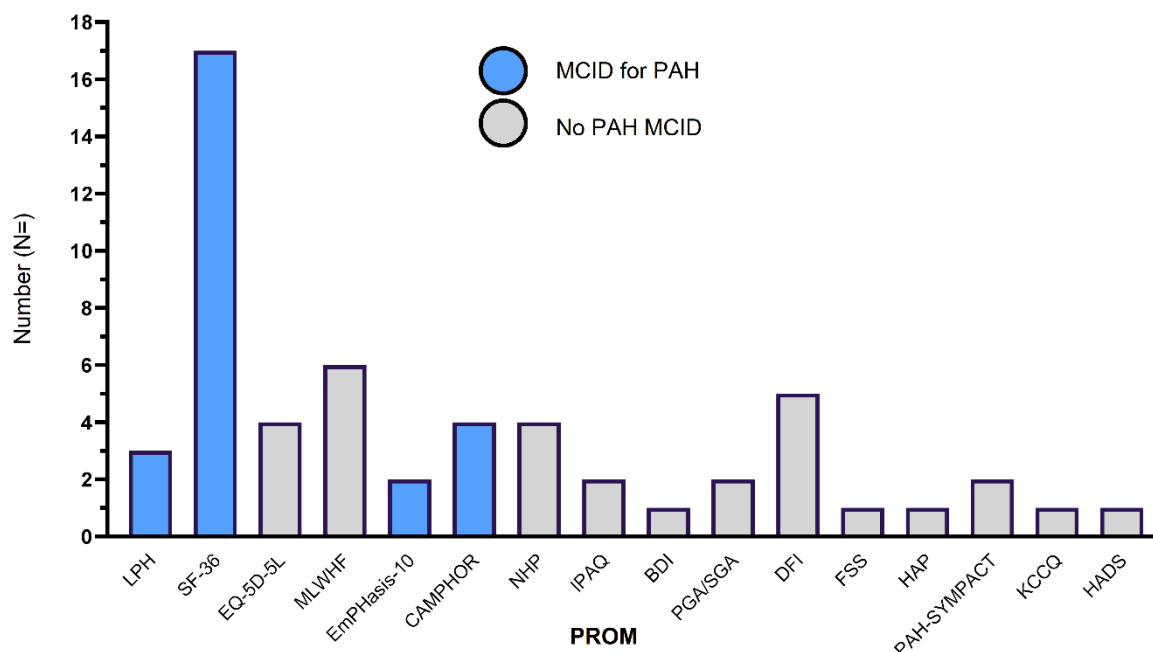


Figure 1: HRQoL Instruments in PAH RCTs from systematic review categorised by ability to distinguish meaningful change in the PAH population.

20 of 43 trials selected an instrument with a MCID for HRQoL. 56 total instruments are included as 13 trials included more than one instrument, see supplementary table E2 for full details. No trials reported results in the context of MCID. Where available, statistical significance was reported as  $p < 0.05$ .

BDI Beck's depression inventory, CAMPHOR Cambridge Pulmonary Hypertension Outcome Review, E10 EmPHasis-10, EuroQoL(EQ)-5D-5L, DFI dyspnoea fatigue index, FSS fatigue severity score, HADS hospital anxiety and depression questionnaire, HAP human activity profile, IPAQ International Physical Activity Questionnaire, KCCQ Kansas City Cardiomyopathy Questionnaire, LPHQ Living with Pulmonary Hypertension Questionnaire, MCID minimal clinically important difference. MLWHF Minnesota Living with Heart Failure, NHP Nottingham Health Profile, PAH-SYMPACT pulmonary arterial hypertension symptoms and impact questionnaire, PGA patient global assessment, SF-36 Short-Form-36, SGA subject global assessment.

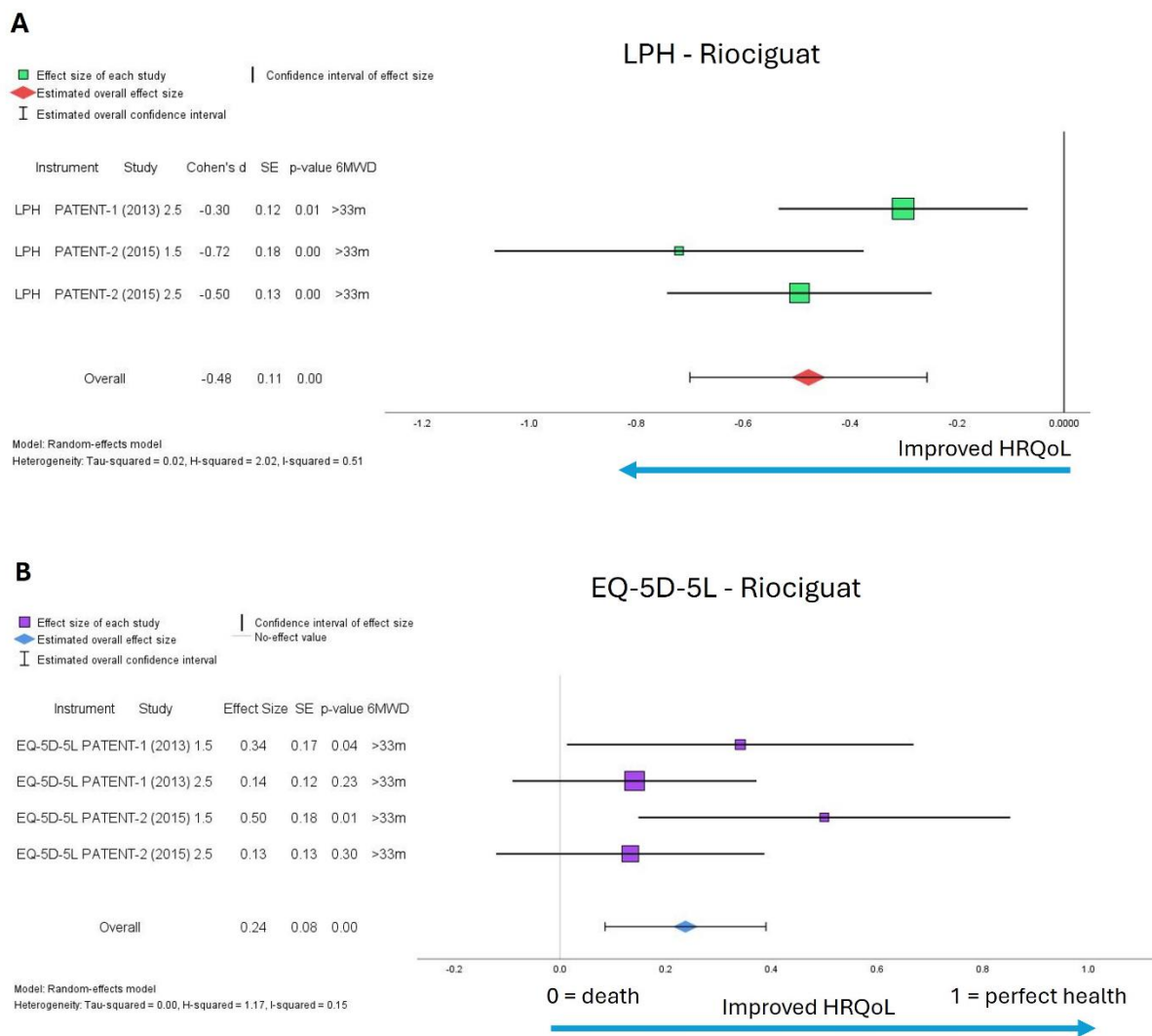


Figure 2: Meta-analysis of HRQoL outcomes for riociguat

PROM instruments LPHQ (A) and EuroQoL (EQ)-5D-5L (B). 1.5mg dose in Patent-1 for LPHQ was excluded as subgroup insufficiently powered. HRQoL health-related quality of life, LPHQ Living with Pulmonary Hypertension. Utility index score was not reported with EQ-5D-5L analysis. PROMs delivered at start and week 12 for PATENT-1, and every 2 weeks up to week 8 for PATENT-2 follow-on study. 12-month follow-up data for EQ-5D-5L from PATENT-2 not included. No imputation reported of missing data. 2.5mg riociguat 2013,(107)  $n = 254$  (WHO FC III,  $n = 140$  (55%) Vs WHO FC II,  $n = 108$  (43%)) $^{**} p > 0.05$ ; riociguat 1.5mg 2013,  $n = 63$  (WHO FC III,  $n = 39$  (62%) Vs WHO FC II,  $n = 19$  (30%)) $^{***} p < 0.0001$ ; 2.5mg riociguat 2015,(104)  $n = 231$  (WHO FC III,  $n = 127$  (55%) Vs WHO FC II,  $n = 97$  (42%)) $^{**} p > 0.05$ ; 1.5mg riociguat 2015,  $n = 56$  (WHO FC III  $n = 35$  (63%) Vs WHO FC II,  $n = 17$  (30%)) $^{**} p < 0.005$  all Fisher's exact test.

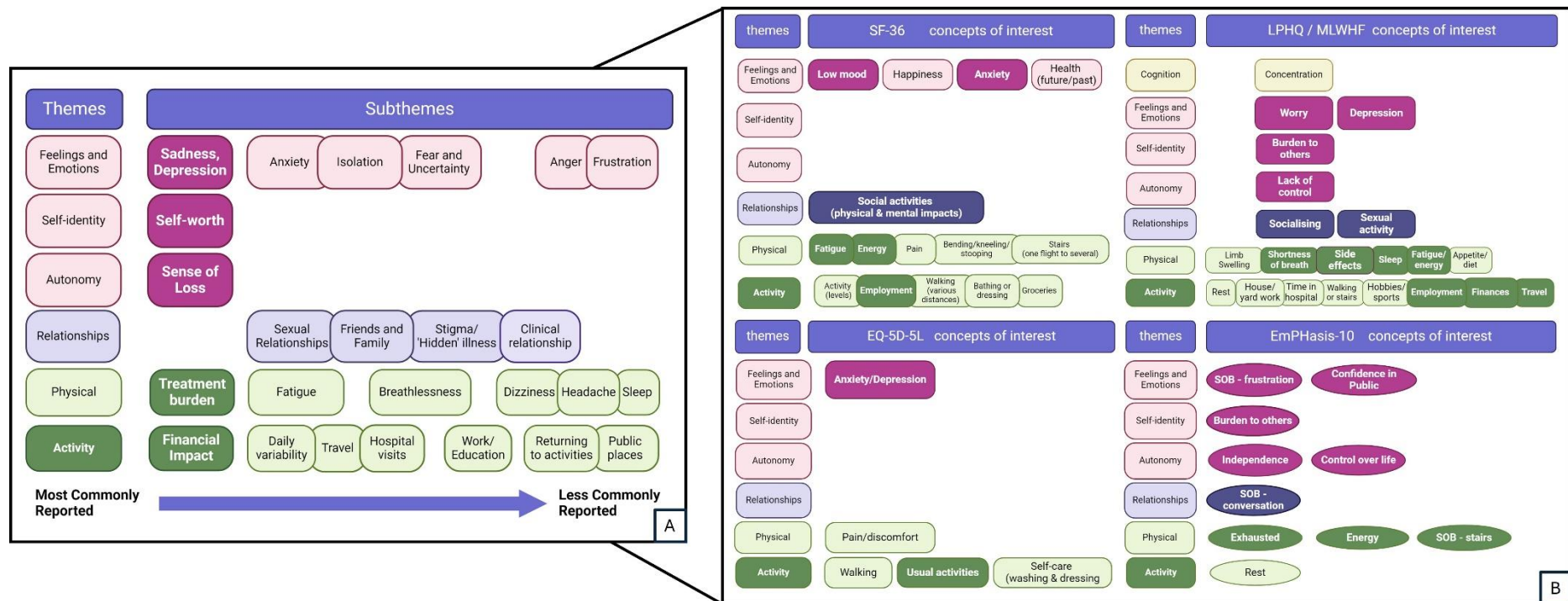


Figure 3: (A) Conceptual framework for PAH HRQoL and (B) scope of PROMs used in PAH RCTs mapped onto the conceptual framework by professionals.

[A] Framework of patient-reported themes (n=6) and subthemes (n=25) identified by two independent reviewers on impact of pulmonary hypertension (majority group 1 PAH) on HRQoL [A]. Directly reported concepts are in bold (n= 8045 from supplementary table E6). Concepts may indirectly cross subthemes (cross loading), for example, treatment burden may impact on the EQ-5D-5L item ‘pain/discomfort’ as a reflection of treatment side effects however this is not included in analysis. Emphasis-10 (oval) is included as two RCTs are currently recruiting.(110) LPHQ is combined with MLWHF as instruments are identical. [B] Professional conceptual mapping of PROMs to HRQoL framework (6 PH consultants, 2 PH clinical fellows, 1 nurse specialist, 1 clinical psychologist, 1 physiotherapist). Emphasis-10 and LPHQ cover all main themes. Further work with patient perspectives required. LPHQ Living with Pulmonary Hypertension Questionnaire, MLWHF Minnesota Living with Heart Failure, SOB shortness of breath, SF-36 Short-Form 36.

		<b>LPHQ/MLWHF</b> (35,103,104,112,113,128)	<b>EmPHasis-10</b> (118–123,125–127,154)	<b>SF-36</b> (42,102,112–117,151–153,155)	<b>EQ-5D-5L</b> (35,109,149,156)
<b>Characteristics</b>	Setting	Clinic & Trial	Clinical	Clinical	NA
	Completion	5-10 min	3-4 min	5-10 min	3-4 min
	Number of Items / scales	21 Likert	10 Likert	36 Likert/ discrete	5 Likert
	Recall period	One week	Recent experience	Varies with item	Today
	Derivation PAH	US, Germany, France	UK & Ireland	NA	NA
	Translations	English	>20(134)	193	208
	Cost***	Free(157)	Free(158)	Free(159)	Free(160)
	Construct(s)	Total, Physical & Emotional summary scores	Total score	8 Domains*, Physical & Mental scores	Score indexed for population health state
	Scoring / (Best HRQoL)	0-105 (0)	0-50 (0)	Varies	0-1 (1)
<b>Quality of Design</b>	Construct	+	+	-	NA
	Concept	?	-	-	NA
	Cognitive Interview	?	-	-	NA
	Patients	+	?	-	NA
	Experts	-	?	-	NA
<b>Internal Structure</b>	Structural validity	?	?	NA	NA
	Internal consistency	+	+	+	
	Measurement invariance/ Country	NA/ none	- US, Japan, China, Italy, Turkey	NA/ none	NA/ none
<b>Reliability</b>	Test-retest	?	+	?	NA
	Measurement error	-	+	+	NA
<b>Hypothesis Testing</b>	Criterion validity	NA	NA	NA	NA
	Other instruments	+	+	+	?
	Response to intervention	+	NA	+	?
	Subgroups	+	+	?*	NA
<b>Quality of Evidence Summary</b>		Low	Low	Very Low	NA
<b>Recommendation (A to C)</b>		A	A	B	B

Table 2: Summary of PROM characteristics, measurement properties and evidence quality

sufficient (+), insufficient (–), or indeterminate (?), (NA) not available. Summary of evidence quality based on a modified GRADE approach. Properties with moderate to high evidence quality are shaded grey. Recommendations are made by three categories (A) PROM can be trusted for use with evidence for sufficient content validity and internal consistency, (B) potential to be recommended for use but not categorized as A or C or (C) PROMs with high quality evidence that a measurement property is insufficient and therefore should not be recommended for use.

\*\*\*non-commercial use, \*8 items: P physical, RP role physical, EF energy fatigue, SF social functioning, MH mental health, RE role emotional, GH general health, V vitality. Factor coefficients for mental and physical summary scores are held under copyright, reporting a total overall score is not recommended.(114,161) \*inconsistencies with item functioning. Full summary of findings available in online supplement tables E7 and E8.

GRADE Grading of Recommendations Assessment Development Evaluation, EuroQol-5D-5L (EQ-5D-5L), LPHQ Living with Pulmonary Hypertension Questionnaire, MLWHF Minnesota Living with Heart Failure, SF Short Form-36

## **Contributions**

All authors contributed to the development of the manuscript and approved the final version

## **Acknowledgements**

The authors would like to thank the patients from PHA UK and PHA UK representatives who supported the ratification of the conceptual framework. Thank you to Dr Charlie Eliot for ratifying the conceptual framework in addition to the authors.

## **Statement of Guarantor**

N/A



### Contact emails and ORCID

f.varian@sheffield.ac.uk	0000-0002-4644-8391
joseph.newman@nhs.net	0000-0001-5514-0754
charlotte.pearson21@nhs.net	<a href="https://orcid.org/0009-0005-8120-9678">0009-0005-8120-9678</a>
R.Thompson@sheffield.ac.uk	0000-0002-0717-4551
gregg.rawlings@sheffield.ac.uk	0000-0002-7916-9313.
a.rothman@sheffield.ac.uk	<a href="https://orcid.org/0000-0002-7847-4500">https://orcid.org/0000-0002-7847-4500</a>
ciara.a.mccormack@mu.ie	<a href="https://orcid.org/0000-0003-4508-5522">https://orcid.org/0000-0003-4508-5522</a>
rebecca.burney@nhs.net	0009-0001-4984-6029
T.Peasgood@sheffield.ac.uk	0000-0001-8024-7801
zmgoh13@gmail.com	0000-0001-8912-8470
j.carlton@sheffield.ac.uk	0000-0002-9373-7663

## References

1. Weatherald J, Boucly A, Peters A, Montani D, Prasad K, Psotka MA, et al. The evolving landscape of pulmonary arterial hypertension clinical trials. *The Lancet* [Internet]. 2022 Nov 26 [cited 2022 Dec 13];400(10366):1884–98. Available from: <http://www.ncbi.nlm.nih.gov/pubmed/36436527>
2. Sitbon O, Nikkho S, Benza R, Deng C (CQ), Farber HW, Gomberg-Maitland M, et al. Novel composite clinical endpoints and risk scores used in clinical trials in pulmonary arterial hypertension. *Pulm Circ*. 2020 Oct;10(4):1–11.
3. Nafees B, de Freitas HM, Beaudet A, Todd E, Gin-Sing W. A Health State Utility Study to Elicit Societal Values Associated with Pulmonary Hypertension. *Patient Prefer Adherence*. 2023 Aug;Volume 17:2119–30.
4. Dong W, Zhang Z, Chu M, Gu P, Hu M, Liu L, et al. Cost-effectiveness analysis of selexipag for the combined treatment of pulmonary arterial hypertension. *Front Pharmacol*. 2023 Aug 11;14.
5. Ekhlasli M, Sheikhi S, Majd ZK, Peiravian F, Yousefi N. Cost-Effectiveness Analysis of Macitentan in Comparison With Bosentan in the Treatment of Pulmonary Arterial Hypertension in Iran. *Value Health Reg Issues*. 2023 Mar;34:78–85.
6. Flattery MP, Pinson JM, Savage L, Salyer J. Living with pulmonary artery hypertension: Patients' experiences. *Heart & Lung*. 2005 Mar;34(2):99–107.
7. Guillevin L, Armstrong I, Aldrighetti R, Howard LS, Ryfthenius H, Fischer A, et al. Understanding the impact of pulmonary arterial hypertension on patients' and carers' lives. *European Respiratory Review*. 2013 Dec 1;22(130):535–42.
8. PHA UK. What it means to live with PH today [Internet]. 2017 [cited 2023 Oct 5]. Available from: <https://www.phauk.org/research-survey-work/living-ph-report/>
9. Armstrong I, Billings C, Kiely DG, Yorke J, Harries C, Clayton S, et al. The patient experience of pulmonary hypertension: a large cross-sectional study of UK patients. *BMC Pulm Med*. 2019 Dec 21;19(1):67.
10. Tremblay É, Gosselin C, Mai V, Lajoie AC, Kilo R, Weatherald J, et al. Assessment of Clinical Worsening End Points as a Surrogate for Mortality in Pulmonary Arterial Hypertension: A Systematic Review and Meta-Analysis of Randomized Controlled Trials. *Circulation*. 2022 Aug 23;146(8):597–612.
11. Nancy Devlin KSYFBM and B van H. Valuing Health-Related Quality of Life: An EQ-5D-5L Value Set for England [Internet]. 2016 [cited 2024 Feb 18]. Available from: [https://www.ohe.org/wp-content/uploads/2016/04/25-Jan-OHE-research-paper\\_value-set-paper-CORRECTED.pdf](https://www.ohe.org/wp-content/uploads/2016/04/25-Jan-OHE-research-paper_value-set-paper-CORRECTED.pdf)
12. Gerlinger C, Bamber L, Leverkus F, Schwenke C, Haberland C, Schmidt G, et al. Comparing the EQ-5D-5L utility index based on value sets of different countries: impact on the interpretation of clinical study results. *BMC Res Notes*. 2019 Dec 14;12(1):18.
13. Whitehead SJ, Ali S. Health outcomes in economic evaluation: the QALY and utilities. *Br Med Bull*. 2010 Dec 1;96(1):5–21.
14. Humbert M, Kovacs G, Hoeper MM, Badagliacca R, Berger RMF, Brida M, et al. 2022 ESC/ERS Guidelines for the diagnosis and treatment of pulmonary hypertension. *Eur Heart J*. 2022 Oct 11;43(38):3618–731.

15. Yaras A, Mathai SC, Nathan SD, DuBrock HM, Morland K, Anderson N, et al. Considerations When Selecting Patient-Reported Outcome Measures for Assessment of Health-Related Quality of Life in Patients With Pulmonary Hypertension. *Chest*. 2022 Nov;162(5):1163–75.
16. United States Food and Drug Administration. PATIENT-FOCUSED DRUG DEVELOPMENT GUIDANCE PUBLIC WORKSHOP Methods to Identify What is Important to Patients & Select, Develop or Modify Fit-for-Purpose Clinical Outcomes Assessments [Internet]. 2018 [cited 2024 Jul 15]. Available from: <https://www.fda.gov/media/116277/download>
17. Terwee CB, Prinsen CAC, Chiarotto A, Westerman MJ, Patrick DL, Alonso J, et al. COSMIN methodology for evaluating the content validity of patient-reported outcome measures: a Delphi study. *Quality of Life Research*. 2018 May 17;27(5):1159–70.
18. Prinsen CAC, Vohra S, Rose MR, King-Jones S, Ishaque S, Bhaloo Z, et al. Core Outcome Measures in Effectiveness Trials (COMET) initiative: protocol for an international Delphi study to achieve consensus on how to select outcome measurement instruments for outcomes included in a ‘core outcome set.’ *Trials*. 2014 Dec 25;15(1):247.
19. Lapin BR. Considerations for Reporting and Reviewing Studies Including Health-Related Quality of Life. *Chest*. 2020 Jul;158(1):S49–56.
20. Leidy NK, Revicki DA, Genesté B. Recommendations for Evaluating the Validity of Quality of Life Claims for Labeling and Promotion. *Value in Health*. 1999 Mar;2(2):113–27.
21. Calvert M, Kyte D, Mercieca-Bebber R, Slade A, Chan AW, King MT, et al. Guidelines for Inclusion of Patient-Reported Outcomes in Clinical Trial Protocols. *JAMA*. 2018 Feb 6;319(5):483.
22. Reeve BB, Wyrwich KW, Wu AW, Velikova G, Terwee CB, Snyder CF, et al. ISOQOL recommends minimum standards for patient-reported outcome measures used in patient-centered outcomes and comparative effectiveness research. *Quality of Life Research*. 2013 Oct 4;22(8):1889–905.
23. Elsman EBM, Mokkink LB, Terwee CB, Beaton D, Gagnier JJ, Tricco AC, et al. Guideline for reporting systematic reviews of outcome measurement instruments (OMIs): PRISMA-COSMIN for OMIs 2024. *Health Qual Life Outcomes*. 2024 Jul 9;22(1):48.
24. Finch AP, Brazier JE, Mukuria C. What is the evidence for the performance of generic preference-based measures? A systematic overview of reviews. *The European Journal of Health Economics*. 2018 May 30;19(4):557–70.
25. Wilson IB. Linking Clinical Variables With Health-Related Quality of Life. *JAMA*. 1995 Jan 4;273(1):59.
26. McDool E, Carlton J, Powell PA, Coates E, Knox L, Mayberry E, et al. Measuring Health-Related Quality of Life in Amyotrophic Lateral Sclerosis. *Neurology*. 2024 Jul 23;103(2).
27. Rose SW, Highland KB, Kelkar AA. Clinical Utility of Patient-Reported Outcome Instruments in the Management of Pulmonary Hypertension. *JACC Heart Fail*. 2024 Feb;12(2):366–76.
28. Chen H, Taichman DB, Doyle RL. Health-related Quality of Life and Patient-reported Outcomes in Pulmonary Arterial Hypertension. *Proc Am Thorac Soc*. 2008 Jul 15;5(5):623–30.
29. Rival G, Lacasse Y, Martin S, Bonnet S, Provencher S. Effect of Pulmonary Arterial Hypertension-Specific Therapies on Health-Related Quality of Life. *Chest*. 2014 Sep;146(3):686–708.
30. Prinsen CAC, Mokkink LB, Bouter LM, Alonso J, Patrick DL, de Vet HCW, et al. COSMIN guideline for systematic reviews of patient-reported outcome measures. *Quality of Life Research*. 2018 May 12;27(5):1147–57.

31. COSMIN. Guideline for Systematic Reviews of Outcome Measurement Instruments [Internet]. Amsterdam; 2020 Dec [cited 2023 Jun 1]. Available from: Guideline for Systematic Reviews of Outcome Measurement Instruments
32. U.S. Food and Drug Administration (FDA). Surrogate Endpoint Resources for Drug and Biologic Development [Internet]. 2018 [cited 2024 May 24]. Available from: <https://www.fda.gov/drugs/development-resources/surrogate-endpoint-resources-drug-and-biologic-development>
33. Prinsen CAC, Mokkink LB, Bouter LM, Alonso J, Patrick DL, de Vet HCW, et al. COSMIN guideline for systematic reviews of patient-reported outcome measures. *Quality of Life Research*. 2018 May 12;27(5):1147–57.
34. Mokkink LB, de Vet HCW, Prinsen CAC, Patrick DL, Alonso J, Bouter LM, et al. COSMIN Risk of Bias checklist for systematic reviews of Patient-Reported Outcome Measures. *Quality of Life Research*. 2018 May 19;27(5):1171–9.
35. Bonner N, Abetz L, Meunier J, Sikirica M, Mathai SC. Development and validation of the living with pulmonary hypertension questionnaire in pulmonary arterial hypertension patients. *Health Qual Life Outcomes*. 2013;11(1):161.
36. Witt S, Krauss E, Barbero MAN, Müller V, Bonniaud P, Vancheri C, et al. Psychometric properties and minimal important differences of SF-36 in Idiopathic Pulmonary Fibrosis. *Respir Res*. 2019 Dec 1;20(1):47.
37. Gonzalez-Saenz de Tejada M, Bilbao A, Ansola L, Quirós R, García-Perez L, Navarro G, et al. Responsiveness and minimal clinically important difference of the Minnesota living with heart failure questionnaire. *Health Qual Life Outcomes*. 2019 Dec 14;17(1):36.
38. Butler J, Shahzeb Khan M, Lindenfeld J, Abraham WT, Savarese G, Salsali A, et al. Minimally Clinically Important Difference in Health Status Scores in Patients With HF<sub>r</sub>EF vs HF<sub>p</sub>EF. *JACC Heart Fail*. 2022 Sep;10(9):651–61.
39. McClure NS, Sayah F Al, Xie F, Luo N, Johnson JA. Instrument-Defined Estimates of the Minimally Important Difference for EQ-5D-5L Index Scores. *Value in Health*. 2017 Apr;20(4):644–50.
40. Chin KM, Gombert-Maitland M, Channick RN, Cuttica MJ, Fischer A, Frantz RP, et al. Psychometric Validation of the Pulmonary Arterial Hypertension-Symptoms and Impact (PAH-SYMPACT) Questionnaire: Results of the SYMPHONY Trial. *Chest*. 2018 Oct 1;154(4):848–61.
41. Ulrich S. A Further Step Toward Meaningful Trial Outcomes for Patients with Pulmonary Arterial Hypertension: Minimal Important Difference in 6-minute-walk Distance. *Am J Respir Crit Care Med*. 2023 Apr 15;207(8):972–4.
42. Taichman DB, Shin J, Hud L, Archer-Chicko C, Kaplan S, Sager JS, et al. Health-related quality of life in patients with pulmonary arterial hypertension. *Respir Res*. 2005 Dec 10;6(1):92.
43. Peasgood T, Brazier J. Is Meta-Analysis for Utility Values Appropriate Given the Potential Impact Different Elicitation Methods Have on Values? *Pharmacoeconomics*. 2015 Nov 2;33(11):1101–5.
44. Aiyegbusi OL, Nair D, Peipert JD, Schick-Makaroff K, Mucsi I. A narrative review of current evidence supporting the implementation of electronic patient-reported outcome measures in the management of chronic diseases. *Ther Adv Chronic Dis*. 2021 Jan 24;12:204062232110159.

45. Brazier J, Peasgood T, Mukuria C, Marten O, Kreimeier S, Luo N, et al. The EQ-HWB: Overview of the Development of a Measure of Health and Wellbeing and Key Results. *Value in Health*. 2022 Apr;25(4):482–91.
46. PHA UK. Breathless not voiceless: what it means to live with pulmonary hypertension today [Internet]. 2023 [cited 2024 Apr 2]. Available from: <https://www.phauk.org/research/pha-uk-led-research/breathless-not-voiceless-what-it-means-to-live-with-ph-today/>
47. Péloquin J, Robichaud-Ekstrand S, Pepin J. Quality of life perception by women suffering from stage III or IV primary pulmonary hypertension and receiving prostacyclin treatment. *Can J Nurs Res*. 1998;30(1):113–36.
48. Yorke J, Armstrong I, Bundock S. Impact of living with pulmonary hypertension: A qualitative exploration. *Nurs Health Sci*. 2014 Dec 15;16(4):454–60.
49. Zhai Z, Zhou X, Zhang S, Xie W, Wan J, Kuang T, et al. The impact and financial burden of pulmonary arterial hypertension on patients and caregivers. *Medicine*. 2017 Sep;96(39):e6783.
50. McDonough A, Matura LA, Carroll DL. Symptom Experience of Pulmonary Arterial Hypertension Patients. *Clin Nurs Res*. 2011 May 3;20(2):120–34.
51. PHA UK. Helping people get the most from their PH treatments: Phoenix study proposal findings [Internet]. 2021 [cited 2023 Jul 18]. Available from: <https://www.phauk.org/app/uploads/2021/04/Phoenix-study-research-report.pdf>
52. Newman J, Armstrong I, PHA UK. <https://www.phauk.org/clinical-trials-what-matters-to-you/>. 2022 [cited 2024 Apr 2]. Clinical trials: what matters to you. Available from: <https://www.phauk.org/clinical-trials-what-matters-to-you/>
53. McGoon MD, Ferrari P, Armstrong I, Denis M, Howard LS, Lowe G, et al. The importance of patient perspectives in pulmonary hypertension. *European Respiratory Journal*. 2019 Jan;53(1):1801919.
54. Rawlings GH, Beail N, Armstrong I, Condliffe R, Kiely DG, Sabroe I, et al. Adults' experiences of living with pulmonary hypertension: a thematic synthesis of qualitative studies. *BMJ Open*. 2020 Dec 7;10(12):e041428.
55. McCollister D, Shaffer S, Badesch DB, Filusch A, Hunsche E, Schüler R, et al. Development of the Pulmonary Arterial Hypertension-Symptoms and Impact (PAH-SYMPACT®) questionnaire: a new patient-reported outcome instrument for PAH. *Respir Res*. 2016 Dec 14;17(1):72.
56. Hoepfer MM, Badesch DB, Ghofrani HA, Gibbs JSR, Gombert-Maitland M, McLaughlin V V., et al. Phase 3 Trial of Sotatercept for Treatment of Pulmonary Arterial Hypertension. *New England Journal of Medicine*. 2023 Apr 20;388(16):1478–90.
57. Howard LS, Rosenkranz S, Frantz RP, Hemnes AR, Pfister T, Hsu Schmitz SF, et al. Assessing Daily Life Physical Activity by Actigraphy in Pulmonary Arterial Hypertension: Insights From the Randomized Controlled Study With Selexipag (TRACE). *Chest*. 2023;163(2).
58. Ozcan Kahraman B, Tanriverdi A, Savci S, Odaman H, Akdeniz B, Sevinc C, et al. Effects of Inspiratory Muscle Training in Patients With Pulmonary Hypertension. *Am J Cardiol*. 2023 Sep;203:406–13.
59. Rosenkranz S, Feldman J, McLaughlin V V, Rischard F, Lange TJ, White RJ, et al. Selonsertib in adults with pulmonary arterial hypertension (ARROW): a randomised, double-blind, placebo-controlled, phase 2 trial. *Lancet Respir Med*. 2022 Jan;10(1):35–46.

60. Grünig E, MacKenzie A, Peacock AJ, Eichstaedt CA, Benjamin N, Nechwatal R, et al. Standardized exercise training is feasible, safe, and effective in pulmonary arterial and chronic thromboembolic pulmonary hypertension: Results from a large European multicentre randomized controlled trial. *Eur Heart J*. 2021;42(23).
61. Hemnes AR, Silverman-Lloyd LG, Huang S, MacKinnon G, Annis J, Whitmore CS, et al. A Mobile Health Intervention to Increase Physical Activity in Pulmonary Arterial Hypertension. *Chest*. 2021;160(3).
62. Humbert M, McLaughlin V, Gibbs JSR, Gomberg-Maitland M, Hoeper MM, Preston IR, et al. Sotatercept for the Treatment of Pulmonary Arterial Hypertension. *New England Journal of Medicine*. 2021 Apr 1;384(13):1204–15.
63. Hoeper MM, Al-Hiti H, Benza RL, Chang SA, Corris PA, Gibbs JSR, et al. Switching to riociguat versus maintenance therapy with phosphodiesterase-5 inhibitors in patients with pulmonary arterial hypertension (REPLACE): a multicentre, open-label, randomised controlled trial. *Lancet Respir Med*. 2021 Jun;9(6):573–84.
64. Chin KM, Sitbon O, Doelberg M, Feldman J, Gibbs JSR, Grünig E, et al. Three- Versus Two-Drug Therapy for Patients With Newly Diagnosed Pulmonary Arterial Hypertension. *J Am Coll Cardiol*. 2021 Oct;78(14):1393–403.
65. Aslan GK, Akinci B, Yeldan I, Okumus G. A randomized controlled trial on inspiratory muscle training in pulmonary hypertension: Effects on respiratory functions, functional exercise capacity, physical activity, and quality of life. *Heart & Lung*. 2020 Jul;49(4):381–7.
66. Kahraman BO, Savci S, Ozsoy I, Baran A, Acar S, Ozpelit E, et al. Effects of neuromuscular electrical stimulation in patients with pulmonary arterial hypertension: a randomized controlled pilot study. *J Cardiol*. 2020 Jun;75(6):702–8.
67. Yılmaz BC, Güçlü MB, Keleş MN, Taçoy GA, Çengel A. Effects of upper extremity aerobic exercise training on oxygen consumption, exercise capacity, dyspnea and quality of life in patients with pulmonary arterial hypertension. *Heart and Lung*. 2020;49(5).
68. McLaughlin V V., Vachieri JL, Oudiz RJ, Rosenkranz S, Galiè N, Barberà JA, et al. Patients with pulmonary arterial hypertension with and without cardiovascular risk factors: Results from the AMBITION trial. *The Journal of Heart and Lung Transplantation*. 2019 Dec;38(12):1286–95.
69. Babu AS, Padmakumar R, Nayak K, Shetty R, Mohapatra AK, Maiya AG. Effects of home-based exercise training on functional outcomes and quality of life in patients with pulmonary hypertension: A randomized clinical trial. *Indian Heart J*. 2019;71(2).
70. Gerhardt F, Dumitrescu D, Gärtner C, Beccard R, Viethen T, Kramer T, et al. Oscillatory whole-body vibration improves exercise capacity and physical performance in pulmonary arterial hypertension: A randomised clinical study. *Heart*. 2017;103(8).
71. Tapson VF, Jing ZC, Xu KF, Pan L, Feldman J, Kiely DG, et al. Oral Treprostinil for the Treatment of Pulmonary Arterial Hypertension in Patients Receiving Background Endothelin Receptor Antagonist and Phosphodiesterase Type 5 Inhibitor Therapy (The FREEDOM-C2 Study). *Chest*. 2013 Sep;144(3):952–8.
72. van Campen JSJA, de Boer K, van de Veerdonk MC, van der Bruggen CEE, Allaart CP, Raijmakers PG, et al. Bisoprolol in idiopathic pulmonary arterial hypertension: an explorative study. *European Respiratory Journal*. 2016 Sep;48(3):787–96.

73. Sitbon O, Channick R, Chin KM, Frey A, Gaine S, Galiè N, et al. Selexipag for the Treatment of Pulmonary Arterial Hypertension. *New England Journal of Medicine*. 2015 Dec 24;373(26):2522–33.
74. Ghofrani HA, Galiè N, Grimminger F, Grünig E, Humbert M, Jing ZC, et al. Riociguat for the Treatment of Pulmonary Arterial Hypertension. *New England Journal of Medicine*. 2013 Jul 25;369(4):330–40.
75. Rubin LJ, Galiè N, Grimminger F, Grünig E, Humbert M, Jing ZC, et al. Riociguat for the treatment of pulmonary arterial hypertension: a long-term extension study (PATENT-2). *European Respiratory Journal*. 2015 May;45(5):1303–13.
76. Galiè N, Müller K, Scalise AV, Grünig E. PATENT PLUS: a blinded, randomised and extension study of riociguat plus sildenafil in pulmonary arterial hypertension. *European Respiratory Journal*. 2015 May;45(5):1314–22.
77. Saglam M, Arikan H, Vardar-Yagli N, Calik-Kutukcu E, Inal-Ince D, Savci S, et al. Inspiratory Muscle Training in Pulmonary Arterial Hypertension. *J Cardiopulm Rehabil Prev*. 2015 May;35(3):198–206.
78. Ulrich S, Keusch S, Hildenbrand FF, Lo Cascio C, Huber LC, Tanner FC, et al. Effect of nocturnal oxygen and acetazolamide on exercise performance in patients with pre-capillary pulmonary hypertension and sleep-disturbed breathing: randomized, double-blind, cross-over trial. *Eur Heart J*. 2015 Mar 7;36(10):615–23.
79. Chan L, Chin LMK, Kennedy M, Woolstenhulme JG, Nathan SD, Weinstein AA, et al. Benefits of Intensive Treadmill Exercise Training on Cardiorespiratory Function and Quality of Life in Patients With Pulmonary Hypertension. *Chest*. 2013 Feb;143(2):333–43.
80. Weinstein AA, Chin LMK, Keyser RE, Kennedy M, Nathan SD, Woolstenhulme JG, et al. Effect of aerobic exercise training on fatigue and physical activity in patients with pulmonary arterial hypertension. *Respir Med*. 2013;107(5).
81. Hoepfer MM, Barst RJ, Bourge RC, Feldman J, Frost AE, Galiè N, et al. Imatinib Mesylate as Add-on Therapy for Pulmonary Arterial Hypertension. *Circulation*. 2013 Mar 12;127(10):1128–38.
82. Tapson VF, Torres F, Kermeen F, Keogh AM, Allen RP, Frantz RP, et al. Oral Treprostinil for the Treatment of Pulmonary Arterial Hypertension in Patients on Background Endothelin Receptor Antagonist and/or Phosphodiesterase Type 5 Inhibitor Therapy (The FREEDOM-C Study). *Chest*. 2012 Dec;142(6):1383–90.
83. Kawut SM, Bagiella E, Lederer DJ, Shimbo D, Horn EM, Roberts KE, et al. Randomized Clinical Trial of Aspirin and Simvastatin for Pulmonary Arterial Hypertension. *Circulation*. 2011 Jun 28;123(25):2985–93.
84. Ghofrani HA, Morrell NW, Hoepfer MM, Olschewski H, Peacock AJ, Barst RJ, et al. Imatinib in Pulmonary Arterial Hypertension Patients with Inadequate Response to Established Therapy. *Am J Respir Crit Care Med*. 2010 Nov 1;182(9):1171–7.
85. McLaughlin V V., Benza RL, Rubin LJ, Channick RN, Voswinckel R, Tapson VF, et al. Addition of Inhaled Treprostinil to Oral Therapy for Pulmonary Arterial Hypertension. *J Am Coll Cardiol*. 2010 May;55(18):1915–22.
86. Galiè N, Rubin L, Hoepfer M, Jansa P, Al-Hiti H, Meyer G, et al. Treatment of patients with mildly symptomatic pulmonary arterial hypertension with bosentan (EARLY study): a double-blind, randomised controlled trial. *The Lancet*. 2008 Jun;371(9630):2093–100.

87. Galiè N, Olschewski H, Oudiz RJ, Torres F, Frost A, Ghofrani HA, et al. Ambrisentan for the Treatment of Pulmonary Arterial Hypertension. *Circulation*. 2008 Jun 10;117(23):3010–9.
88. Simonneau G, Rubin LJ, Galiè N, Barst RJ, Fleming TR, Frost AE, et al. Addition of sildenafil to long-term intravenous epoprostenol therapy in patients with pulmonary arterial hypertension: a randomized trial. *Ann Intern Med*. 2008 Oct 21;149(8):521–30.
89. Hoeper MM. Combining inhaled iloprost with bosentan in patients with idiopathic pulmonary arterial hypertension. *European Respiratory Journal*. 2006 Oct 1;28(4):691–4.
90. Mereles D, Ehlken N, Kreuzer S, Ghofrani S, Hoeper MM, Halank M, et al. Exercise and Respiratory Training Improve Exercise Capacity and Quality of Life in Patients With Severe Chronic Pulmonary Hypertension. *Circulation*. 2006 Oct 3;114(14):1482–9.
91. Galiè N, Badesch D, Oudiz R, Simonneau G, McGoon MD, Keogh AM, et al. Ambrisentan Therapy for Pulmonary Arterial Hypertension. *J Am Coll Cardiol*. 2005 Aug;46(3):529–35.
92. Wilkins MR, Paul GA, Strange JW, Tunariu N, Gin-Sing W, Banya WA, et al. Sildenafil versus Endothelin Receptor Antagonist for Pulmonary Hypertension (SERAPH) Study. *Am J Respir Crit Care Med*. 2005 Jun 1;171(11):1292–7.
93. Humbert M, Barst RJ, Robbins IM, Channick RN, Galiè N, Boonstra A, et al. Combination of bosentan with epoprostenol in pulmonary arterial hypertension: BREATHE-2. *Eur Respir J*. 2004 Sep;24(3):353–9.
94. Barst RJ, McGoon M, McLaughlin V, Tapson V, Oudiz R, Shapiro S, et al. Beraprost therapy for pulmonary arterial hypertension. *J Am Coll Cardiol*. 2003 Jun;41(12):2119–25.
95. Olschewski H, Simonneau G, Galiè N, Higenbottam T, Naeije R, Rubin LJ, et al. Inhaled Iloprost for Severe Pulmonary Hypertension. *New England Journal of Medicine*. 2002 Aug;347(5):322–9.
96. Barst RJ, Rubin LJ, Long WA, McGoon MD, Rich S, Badesch DB, et al. A Comparison of Continuous Intravenous Epoprostenol (Prostacyclin) with Conventional Therapy for Primary Pulmonary Hypertension. *New England Journal of Medicine*. 1996 Feb;334(5):296–301.
97. Farha S, Saygin D, Park MM, Cheong HI, Asosingh K, Comhair SAA, et al. Pulmonary arterial hypertension treatment with carvedilol for heart failure: a randomized controlled trial. *JCI Insight*. 2017 Aug 17;2(16).
98. Han X, Zhang Y, Dong L, Fang L, Chai Y, Niu M, et al. Treatment of Pulmonary Arterial Hypertension Using Initial Combination Therapy of Bosentan and Iloprost. *Respir Care*. 2017 Apr;62(4):489–96.
99. Mehta S, Sastry BKS, Souza R, Torbicki A, Ghofrani HA, Channick RN, et al. Macitentan Improves Health-Related Quality of Life for Patients With Pulmonary Arterial Hypertension. *Chest*. 2017 Jan;151(1):106–18.
100. Tsai APY, Hur SA, Wong A, Safavi M, Assayag D, Johansson KA, et al. Minimum important difference of the EQ-5D-5L and EQ-VAS in fibrotic interstitial lung disease. *Thorax*. 2021 Jan;76(1):37–43.
101. Galiè N, Olschewski H, Oudiz RJ, Torres F, Frost A, Ghofrani HA, et al. Ambrisentan for the Treatment of Pulmonary Arterial Hypertension. *Circulation*. 2008 Jun 10;117(23):3010–9.
102. Grünig E, MacKenzie A, Peacock AJ, Eichstaedt CA, Benjamin N, Nechwatal R, et al. Standardized exercise training is feasible, safe, and effective in pulmonary arterial and chronic thromboembolic pulmonary hypertension: Results from a large European multicentre randomized controlled trial. *Eur Heart J*. 2021;42(23).



103. Ghofrani HA, Galiè N, Grimminger F, Grünig E, Humbert M, Jing ZC, et al. Riociguat for the Treatment of Pulmonary Arterial Hypertension. *New England Journal of Medicine*. 2013 Jul 25;369(4):330–40.
104. Rubin LJ, Galiè N, Grimminger F, Grünig E, Humbert M, Jing ZC, et al. Riociguat for the treatment of pulmonary arterial hypertension: a long-term extension study (PATENT-2). *European Respiratory Journal*. 2015 May;45(5):1303–13.
105. Ghofrani HA, Grimminger F, Grünig E, Huang Y, Jansa P, Jing ZC, et al. Predictors of long-term outcomes in patients treated with riociguat for pulmonary arterial hypertension: data from the PATENT-2 open-label, randomised, long-term extension trial. *Lancet Respir Med*. 2016 May;4(5):361–71.
106. Galiè N, Müller K, Scalise AV, Grünig E. PATENT PLUS: a blinded, randomised and extension study of riociguat plus sildenafil in pulmonary arterial hypertension. *European Respiratory Journal*. 2015 May;45(5):1314–22.
107. Ghofrani HA, Galiè N, Grimminger F, Grünig E, Humbert M, Jing ZC, et al. Riociguat for the Treatment of Pulmonary Arterial Hypertension. *New England Journal of Medicine*. 2013 Jul 25;369(4):330–40.
108. Xie F, Pickard AS, Krabbe PFM, Revicki D, Viney R, Devlin N, et al. A Checklist for Reporting Valuation Studies of Multi-Attribute Utility-Based Instruments (CREATE). *Pharmacoeconomics*. 2015 Aug 31;33(8):867–77.
109. Rubin LJ, Galiè N, Grimminger F, Grünig E, Humbert M, Jing ZC, et al. Riociguat for the treatment of pulmonary arterial hypertension: a long-term extension study (PATENT-2). *European Respiratory Journal*. 2015 May;45(5):1303–13.
110. Varian F, Dick J, Battersby C, Roman S, Ablott J, Watson L, et al. Pulmonary Hypertension: Intensification and Personalization of Combination Rx (PHoenix): A phase IV randomized trial for the evaluation of dose-response and clinical efficacy of riociguat and selexipag using implanted technologies. *Pulm Circ*. 2024 Jan 17;14(1).
111. Deliu N, DR, MA, SJ, DM, JR, WM, TM, VS. StratosPHere 2: A response-adaptive randomised placebo-controlled Phase II trial to evaluate hydroxychloroquine and phenylbutyrate in pulmonary arterial hypertension caused by mutations in BMPR2. pre-print. 2023;
112. Chua R, Keogh AM, Byth K, O’Loughlin A. Comparison and validation of three measures of quality of life in patients with pulmonary hypertension. *Intern Med J*. 2006 Nov 13;36(11):705–10.
113. Zlupko M, Harhay MO, Gallop R, Shin J, Archer-Chicko C, Patel R, et al. Evaluation of disease-specific health-related quality of life in patients with pulmonary arterial hypertension. *Respir Med*. 2008 Oct;102(10):1431–8.
114. Twiss J, McKenna S, Ganderton L, Jenkins S, Ben-L’amri M, Gain K, et al. Psychometric performance of the CAMPHOR and SF-36 in pulmonary hypertension. *BMC Pulm Med*. 2013 Dec 12;13(1):45.
115. Gilbert C, Brown MCJ, Cappelleri JC, Carlsson M, McKenna SP. Estimating a Minimally Important Difference in Pulmonary Arterial Hypertension Following Treatment With Sildenafil. *Chest*. 2009 Jan;135(1):137–42.
116. Gomberg-Maitland M, Thenappan T, Rizvi K, Chandra S, Meads DM, McKenna SP. United States Validation of the Cambridge Pulmonary Hypertension Outcome Review (CAMPHOR). *The Journal of Heart and Lung Transplantation*. 2008 Jan;27(1):124–30.

117. Li JL, Xiao F, Liu HT, Li HT, Zhao QH, Sun CY, et al. Long-term outcomes in health-related quality of life influence chronic disease management in patients with pulmonary hypertension. *Front Cardiovasc Med*. 2022 Nov 10;9.
118. Yorke J, Corris P, Gaine S, Gibbs JSR, Kiely DG, Harries C, et al. emPHasis-10: development of a health-related quality of life measure in pulmonary hypertension. *European Respiratory Journal*. 2014 Apr 1;43(4):1106–13.
119. Borgese M, Badesch D, Bull T, Chakinala M, DeMarco T, Feldman J, et al. EmPHasis-10 as a measure of health-related quality of life in pulmonary arterial hypertension: data from PHAR. *European Respiratory Journal*. 2021 Feb;57(2):2000414.
120. Favoccia C, Kempny A, Yorke J, Armstrong I, Price LC, McCabe C, et al. EmPHasis-10 score for the assessment of quality of life in various types of pulmonary hypertension and its relation to outcome. *Eur J Prev Cardiol*. 2019 Aug 19;26(12):1338–40.
121. Takeyasu R, Tamura Y, Abe K, Goda A, Satoh T, Suda R, et al. Psychometric Validation of a Japanese Version of the emPHasis-10 Questionnaire, a Patient-Reported Outcome Measure for Pulmonary Hypertension — Multicenter Study in Japan —. *Circ Rep*. 2020 Apr 10;2(4):255–9.
122. Hendriks PM, van Thor MCJ, Wapenaar M, Chandoesing P, van den Toorn LM, van den Bosch AE, et al. The longitudinal use of EmPHasis-10 and CAMPHOR questionnaire health-related quality of life scores in patients with pulmonary arterial hypertension and chronic thromboembolic pulmonary hypertension. *Respir Med*. 2021 Sep 1;186:106525.
123. Shi Y, Dong X, Hu X, Weng L, Liu Y, Lai J, et al. Cross-cultural validation of the Chinese version of the EmPHasis-10 questionnaire in connective tissue disease patients with pulmonary arterial hypertension and its relationship with risk stratification. *BMC Pulm Med*. 2022 Dec 5;22(1):264.
124. Lewis RA, Armstrong I, Bergbaum C, Brewis MJ, Cannon J, Charalampopoulos A, et al. EmPHasis-10 health-related quality of life score predicts outcomes in patients with idiopathic and connective tissue disease-associated pulmonary arterial hypertension: results from a UK multicentre study. *European Respiratory Journal*. 2021 Feb;57(2):2000124.
125. Rawlings GH, Gaskell C, Beail N, Thompson A, Armstrong I. Exploratory and confirmatory factor analysis of emPHasis-10: The health-related quality-of-life measure in pulmonary hypertension. *Pulm Circ*. 2024 Apr 12;14(2).
126. Odevoglu P, Demir R, Okumus G, Kucukoglu MS, Kuran Aslan G. Validity and reliability of the Turkish version of the EmPHasis-10 questionnaire in patients with pulmonary hypertension. *J Eval Clin Pract*. 2019 Oct 22;25(5):896–902.
127. Surace A, Torre R, Di Simone E, Dionisi S, Giannetta N, Di Muzio M. Studio di validazione dell'emPHasis-10 per la popolazione italiana. *Nsc Nursing*. 2019 May 6;1(1):1–18.
128. Cenedese E. Measurement of quality of life in pulmonary hypertension and its significance. *European Respiratory Journal*. 2006 Oct 1;28(4):808–15.
129. Fernandes CJ, Martins BC, Jardim CV, Ciconelli RM, Morinaga LK, Breda AP, et al. Quality of life as a prognostic marker in pulmonary arterial hypertension. *Health Qual Life Outcomes*. 2014 Dec 30;12(1):130.
130. Davies EW, Llewellyn S, Beaudet A, Kosmas CE, Gin-Sing W, Doll HA. Elicitation of health state utilities associated with the mode of administration of drugs acting on the prostacyclin pathway in pulmonary arterial hypertension. *Patient Prefer Adherence*. 2018 Jun;Volume 12:1079–88.

131. Mokkink LB PCPDAJBL de VHTC. COSMIN methodology for systematic reviews of Patient-Reported Outcome Measures (PROMs) user manual Version 1.0 [Internet]. 2018 [cited 2024 May 30]. Available from: [https://cosmin.nl/wp-content/uploads/COSMIN-syst-review-for-PROMs-manual\\_version-1\\_feb-2018.pdf](https://cosmin.nl/wp-content/uploads/COSMIN-syst-review-for-PROMs-manual_version-1_feb-2018.pdf)
132. Feng YS, Kohlmann T, Janssen MF, Buchholz I. Psychometric properties of the EQ-5D-5L: a systematic review of the literature. *Quality of Life Research*. 2021 Mar 7;30(3):647–73.
133. Alagappan T. The cross-cultural adaptation process of a patient-reported outcome measure. *Journal of the Scientific Society*. 2023;50(1):13.
134. Foster E, Guillen A, Lara K, Oh P, Popielnicki A, Walker G, et al. Linguistic Validation of The Emphasis-10 Questionnaire: A Patient-Reported Outcome Instrument For Assessing Qol In Pulmonary Hypertension (Ph). *Value in Health*. 2015 Nov;18(7):A744.
135. Calvert MJ, Cruz Rivera S, Retzer A, Hughes SE, Campbell L, Molony-Oates B, et al. Patient reported outcome assessment must be inclusive and equitable. *Nat Med*. 2022 Jun 5;28(6):1120–4.
136. Mair KM, Johansen AKZ, Wright AF, Wallace E, MacLean MR. Pulmonary arterial hypertension: basis of sex differences in incidence and treatment response. *Br J Pharmacol*. 2014 Feb 13;171(3):567–79.
137. Hays RD, Peipert JD. Between-group minimally important change versus individual treatment responders. *Quality of Life Research*. 2021 Oct 15;30(10):2765–72.
138. Bunclark K, Doughty N, Michael A, Abraham N, Ali S, Cannon JE, et al. A minimal clinically important difference measured by the Cambridge Pulmonary Hypertension Outcome Review for patients with idiopathic pulmonary arterial hypertension. *Pulm Circ*. 2021 Apr;11(2):1–9.
139. Swigris J, Foster B, Johnson N. Determining and reporting minimal important change for patient-reported outcome instruments in pulmonary medicine. *European Respiratory Journal*. 2022 Oct;60(4):2200717.
140. Devji T, Carrasco-Labra A, Qasim A, Phillips M, Johnston BC, Devasenapathy N, et al. Evaluating the credibility of anchor based estimates of minimal important differences for patient reported outcomes: instrument development and reliability study. *BMJ*. 2020 Jun 4;m1714.
141. Hays RD, Woolley JM. The Concept of Clinically Meaningful Difference in Health-Related Quality of Life Research. *Pharmacoeconomics*. 2000 Nov;18(5):419–23.
142. Kingman M, Hinzmann B, Sweet O, Vachiéry JL. Living with pulmonary hypertension: unique insights from an international ethnographic study. *BMJ Open*. 2014 May;4(5):e004735.
143. Hertler C, Seiler A, Gramatzki D, Schettle M, Blum D. Sex-specific and gender-specific aspects in patient-reported outcomes. *ESMO Open*. 2020;5:e000837.
144. F. Salaffi MCACSGWG. A comparison of utility measurements using EQ-5D and SF-6D preference-based generic instruments in patients with rheumatoid arthritis. *Clin Exp Rheumatol*. 2011;661–71.
145. McKenna SP, Ratcliffe J, Meads DM, Brazier JE. Development and validation of a preference based measure derived from the Cambridge Pulmonary Hypertension Outcome Review (CAMPHOR) for use in cost utility analyses. *Health Qual Life Outcomes*. 2008 Dec 21;6(1):65.
146. National Institute for Health and Care Excellence. NICE health technology evaluations: the manual (PMG36) [Internet]. 2022 Jan [cited 2024 Jul 15]. Available from:

- <https://www.nice.org.uk/process/pmg36/resources/nice-health-technology-evaluations-the-manual-pdf-72286779244741>
147. Meads DM, McKenna SP, Doughty N, Das C, Gin-Sing W, Langley J, et al. The responsiveness and validity of the CAMPHOR Utility Index. *European Respiratory Journal*. 2008 Dec 1;32(6):1513–9.
  148. Galiè N, Müller K, Scalise AV, Grünig E. PATENT PLUS: a blinded, randomised and extension study of riociguat plus sildenafil in pulmonary arterial hypertension. *European Respiratory Journal*. 2015 May;45(5):1314–22.
  149. Ghofrani HA, Galiè N, Grimminger F, Grünig E, Humbert M, Jing ZC, et al. Riociguat for the Treatment of Pulmonary Arterial Hypertension. *New England Journal of Medicine*. 2013 Jul 25;369(4):330–40.
  150. McLaughlin V V., Benza RL, Rubin LJ, Channick RN, Voswinckel R, Tapson VF, et al. Addition of Inhaled Treprostinil to Oral Therapy for Pulmonary Arterial Hypertension. *J Am Coll Cardiol*. 2010 May;55(18):1915–22.
  151. Galiè N, Rubin L, Hoeper M, Jansa P, Al-Hiti H, Meyer G, et al. Treatment of patients with mildly symptomatic pulmonary arterial hypertension with bosentan (EARLY study): a double-blind, randomised controlled trial. *The Lancet*. 2008 Jun;371(9630):2093–100.
  152. Simonneau G, Rubin LJ, Galiè N, Barst RJ, Fleming TR, Frost AE, et al. Addition of sildenafil to long-term intravenous epoprostenol therapy in patients with pulmonary arterial hypertension: a randomized trial. *Ann Intern Med*. 2008 Oct 21;149(8):521–30.
  153. Olschewski H, Simonneau G, Galiè N, Higenbottam T, Naeije R, Rubin LJ, et al. Inhaled Iloprost for Severe Pulmonary Hypertension. *New England Journal of Medicine*. 2002 Aug;347(5):322–9.
  154. Lewis RA, Armstrong I, Bergbaum C, Brewis MJ, Cannon J, Charalampopoulos A, et al. EmPHasis-10 health-related quality of life score predicts outcomes in patients with idiopathic and connective tissue disease-associated pulmonary arterial hypertension: results from a UK multicentre study. *European Respiratory Journal*. 2021 Feb;57(2):2000124.
  155. Galiè N, Olschewski H, Oudiz RJ, Torres F, Frost A, Ghofrani HA, et al. Ambrisentan for the Treatment of Pulmonary Arterial Hypertension. *Circulation*. 2008 Jun 10;117(23):3010–9.
  156. EuroQol Research Foundation. EQ-5D-5L User Guide [Internet]. 2019 Sep [cited 2024 Apr 15]. Available from: <https://euroqol.org/wp-content/uploads/2023/11/EQ-5D-5LUserguide-23-07.pdf>
  157. University of Minnesota. Living with Pulmonary Hypertension Questionnaire (LPHQ) [Internet]. 2024 [cited 2024 Aug 1]. Available from: <https://license.umn.edu/product/living-with-pulmonary-hypertension-questionnaire-lphq>
  158. PHA UK. EmPHasis-10 Questionnaire [Internet]. 2024 [cited 2024 Aug 1]. Available from: <https://www.phauk.org/pha-uk-resources/emphasis-10-questionnaire/#:~:text=The%20EmPHasis%2D10%20questionnaire%20is,patients%20during%20remote%20assessments%20only.>
  159. QualityMetric. The SF-36v2® Health Survey [Internet]. 2024 [cited 2024 Aug 1]. Available from: <https://www.qualitymetric.com/health-surveys/the-sf-36v2-health-survey/>
  160. EuroQol. How to obtain EQ-5D [Internet]. 2024 [cited 2024 Aug 1]. Available from: <https://euroqol.org/register/obtain-eq-5d/how-to-obtain-eq-5d/#:~:text=The%20EuroQol%20user%20license%20policy,public%20health%2C%20and%20similar%20purposes.>

161. Lins L, Carvalho FM. SF-36 total score as a single measure of health-related quality of life: Scoping review. SAGE Open Med. 2016 Jan 1;4:205031211667172.

# Health-Related Quality of Life (HRQoL) Outcomes in Pulmonary Arterial Hypertension Trials

PROSPERO ID: CRD42024484021

- Inclusion criteria:** Randomised Controlled Trials (RCTs) powered for minimal clinically important difference (MCID) of PROM
- COSMIN** evaluation of PROM psychometric properties

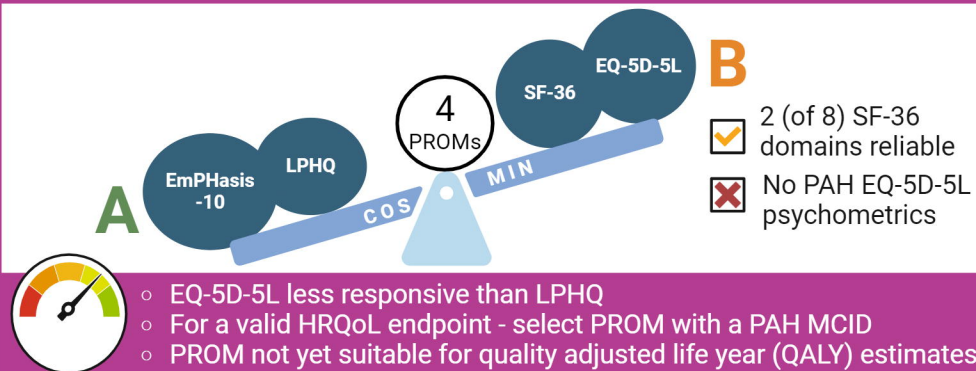


- A Recommended
- B Further evaluation needed
- C Not recommended

## Systematic Review of Patient Reported Outcome Measures (PROM)



## Consensus based standards for Selection of health-Measurement INStruments



## CONCEPTUAL FRAMEWORK



8045 patients



Themes identified



Framework ratified

Ratified HRQoL framework used to map PROMs

### FUTURE FOCUS

Map PROM to this framework from the perspectives of people living with PAH

