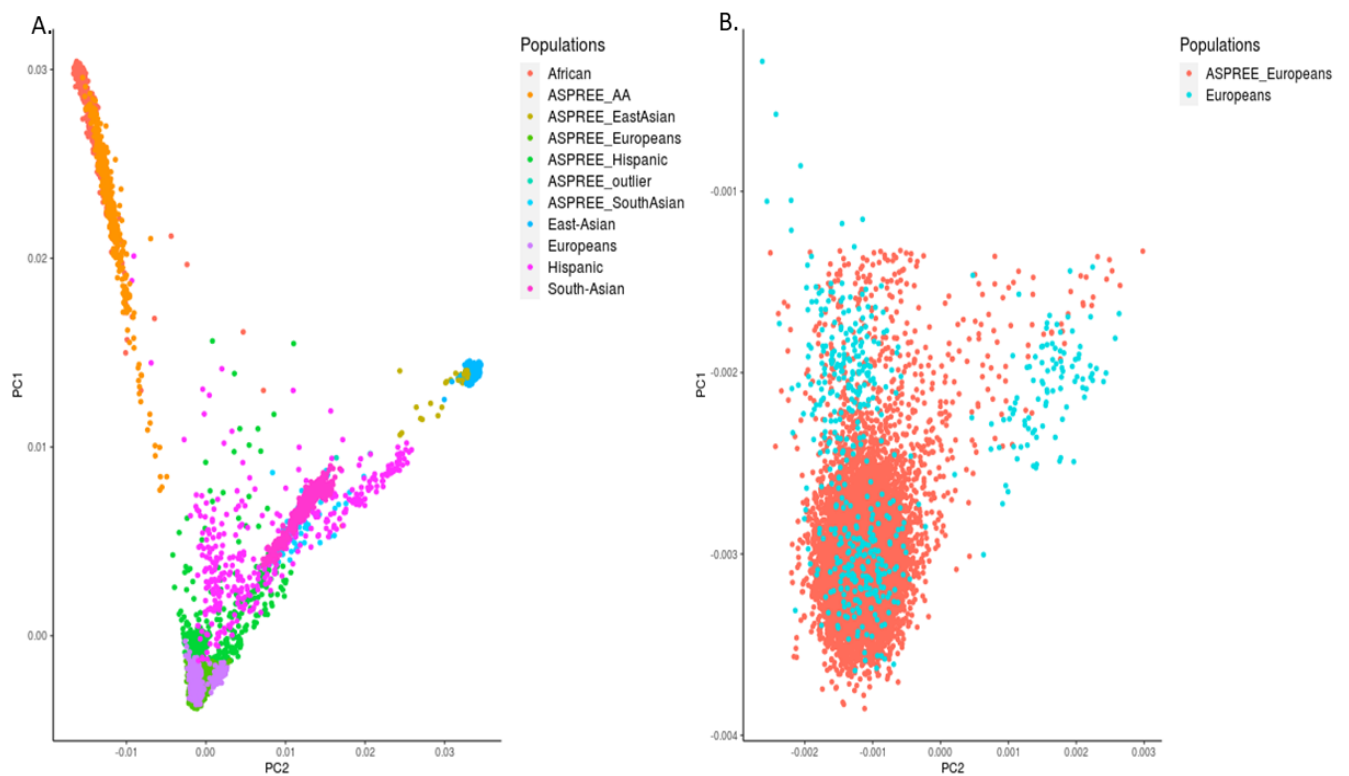


## Supplementary Material

### Genotyping and Principal Component analysis

We followed best practice genotyping and quality control (QC) protocols from Thermo Fisher, starting from raw intensity CEL files, we used a custom script designed for the the AXIOM PMDA array using the human genome reference GRCh38 , to produce variant call files. We performed sample level QC using plink version 1.9, excluding samples for gender discordance (80 samples mismatched and excluded) using plink default F statistics threshold ( $\leq 0.2$  female and  $\geq 0.8$  male), relatedness (124 individuals excluded) using default PI-HAT threshold  $>0.025$  to exclude one sample from each related pair. To estimate population structure in the ASPREE cohort we performed principal component analysis (PCA) using The 1000 Genomes Project as a reference population (24). Directly genotyped data from ASPREE and The 1000 Genomes Project 1K phase 3 (liftover to GRCh38) were merged and LD pruned ( $r^2 < 0.1$ ) using plink version 1.9 (27), followed by R package SNPrelate (25). We calculated the Z score for first 2 principal component eigenvectors and excluded samples with  $\pm 2SD$  (standard deviation) of Z score compared to their respective five reference superpopulation groups from the 1000 Genomes Project that included: Europeans, South Asians, East Asians, African American (African super population) and Hispanics (Ad Mixed American) (Figure S1). The final dataset of 12,978 Caucasians (Non-Finish Europeans) were selected from the ASPREE cohort for further analysis.

**Figure S1: Principal component analysis (PCA) of the ASPREE cohort compared with the 1000 Genomes Project.** **A)** PCA plot of all ASPREE participants projected onto 1000 Genome populations. **B).** PCA plot of ASPREE Europeans samples projected onto 1000 Genome Europeans samples that were included in this study. In Figure legend 1K genome populations are (Europeans, South Asians, East Asians, African American and Hispanics. ASPREE\_AA is African American samples.



**Table S1: SNPs used in polygenic risk score (PRS) of dementia**

32

Gene (NCBI)	SNP	Effect allele	Effect Size (Beta)*	Reference No
ABCA7	rs4147929	G	-0.135	4
BIN1	rs6733839	T	0.188	4
CASS4	rs7274581	C	-0.139	4
CD2AP	rs10948363	G	0.098	4
CELF1	rs10838725	C	0.075	4
CLU	rs9331896	T	0.146	4
CR1	rs6656401	G	-0.157	4
ECHDC3	rs7920721	G	-0.067	20
EPHA1	rs11771145	A	-0.102	4
FERMT2	rs17125944	C	0.122	4
HLA-DRB1/5	rs111418223 merged into rs9271192	A	-0.108	4
HS3ST1	rs13113697	G	-0.067	20
INPP5D	rs35349669	T	0.066	4
KANSL1	rs118172952 merged into rs2732703	G	-0.151	4
MEF2C	rs190982	A	0.08	4
MS4A6A	rs983392	G	-0.108	4
NME8	rs2718058	G	-0.07	4
PICALM	rs10792832	G	0.13	4
PTK2B	rs28834970	C	0.096	4
SLC24A4-RIN3	rs10498633	T	-0.104	4
SORL1	rs11218343	C	-0.27	4
TREM2	rs75932628	T	0.889	21
ZCWPW1	rs1476679	T	0.078	4

\*Shows the weighted effect size used by *Lee et al 2018* (9) to calculate the PRS.

33

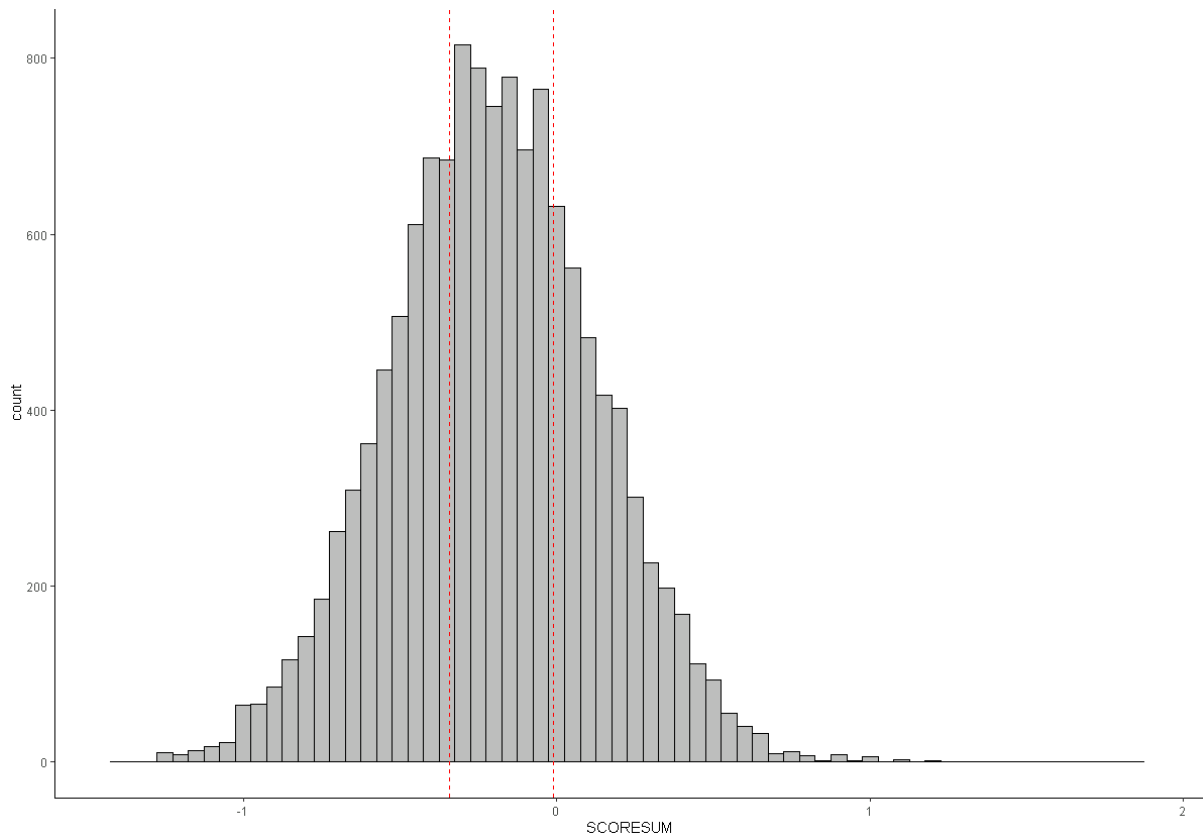
34

35

**Table S2. Hardy-Weinberg equilibrium (HWE) testing for *APOE* genotype frequencies in the ASPREE population.** The chi square test was performed to calculate deviation from Hardy-Weinberg equilibrium [Preacher, K. J. (2001, April). Calculation for the chi-square test: An interactive calculation tool for chi-square tests of goodness of fit and independence [Computer software]. Available from <http://quantpsy.org>.]

<b>Alleles: P = 0.77 (<i>APOE</i> ε3), Q = 0.13 (<i>APOE</i> ε4), R = 0.09 (<i>APOE</i> ε2)</b>				
	<b>Observed</b>	<b>Expected</b>	<b>Chi Square</b>	<b>P value</b>
ε3ε3	7800	7743	38.0	P < 0.001
ε3ε4	2665	2723		
ε2ε2	68	109		
ε2ε3	1784	1839		
ε2ε4	461	323		
ε4ε4	200	239		

**Figure S2: Polygenic risk score (PRS) distribution in the ASPREE cohort.** The red dotted line shows boundaries of PRS tertiles; lower risk tertile -0.56 (range: -1.43 to -0.34), middle risk tertile -0.20 (range -0.34 to -0.06) and high risk tertile 0.16 (range -0.06 to 1.86).



49 **Table S3: Cumulative incidence of dementia stratified by *APOE* genotypes, accounting**  
50 **for death as a competing risk**

<i>APOE</i> genotypes	Age, years*	Participants at risk N	Risk, [95% Confidence Interval]
ε2/ε2:ε2/ε3	75	835	0.2% [0.0-1.1]
ε3/ε3	75	3672	0.4% [0.2-0.7]
ε2/ε4:ε3/ε4	75	1555	1.0% [0.6-1.6]
ε4/ε4	75	103	3.7% [1.4-9.5]
ε2/ε2:ε2/ε3	80	462	1.2% [0.6-2.4]
ε3/ε3	80	1838	2.0% [1.5-2.6]
ε2/ε4:ε3/ε4	80	719	4.9% [3.8-6.3]
ε4/ε4	80	40	19.3% [11.9–30.5]
ε2/ε2:ε2/ε3	85	217	4.0% [2.4-6.5]
ε3/ε3	85	762	5.9% [4.8-7.2]
ε2/ε4:ε3/ε4	85	258	12.6% [10.2-15.5]
ε4/ε4	85	17	26.6% [16.2–42.0]
ε2/ε2:ε2/ε3	90	38	8.7% [5.4-14.1]
ε3/ε3	90	193	5.9% [4.8-7.2]
ε2/ε4:ε3/ε4	90	58	12.6% [10.2-15.5]
ε4/ε4	90	3	26.6% [16.2–42.0]
ε2/ε2:ε2/ε3	95	7	15.4% [6.5-34.0]
ε3/ε3	95	17	21.2% [15.0-25.5]
ε2/ε4:ε3/ε4	95	5	42.0% [28.7-58.4]
ε4/ε4	95	1	48.5% [20.5–85.3]

\*Five-year longitudinal age from baseline to dementia or censored

51

52

**Table S4: Cumulative incidence of dementia stratified by tertiles of a polygenic risk score (PRS), accounting for death as a competing risk**

PRS Tertiles	Age, years	Participants at risk N	Risk, [95% Confidence Interval]
Low	75	2038	0.6% [0.3–1.1]
Middle	75	2024	0.7% [0.4–1.2]
high	75	2096	0.4% [0.2–0.8]
Low	80	1020	2.7% [2.0–3.6]
Middle	80	1030	3.0% [2.2–4.0]
high	80	1021	2.9% [2.2–3.9]
Low	85	410	7.3% [5.7–9.3]
Middle	85	429	5.8% [4.4–7.5]
high	85	411	9.6% [7.8–11.8]
Low	90	116	14.7% [11.5–18.6]
Middle	90	88	15.3% [11.6–19.9]
high	90	9	17.6% [14.2–21.8]
Low	95	12	17.6% [13.4–23.0]
Middle	95	8	27.8% [16.9–43.4]
high	95	9	30.6% [21.9–41.9]

\*Five-year longitudinal age from baseline to dementia or censored

**Table S5: Cumulative incidence of dementia stratified by *APOE* genotypes and tertiles of a PRS**

PRS Group	Age	APOE:e3e3		APOE:e3e4ande2e4		APOE:e2e2&e2e3		APOE:e4e4	
		Risk, 95% CI	N	Risk, 95% CI	N	Risk, 95% CI	N	Risk, 95% CI	N
Low tertile	75	0.6%, 0.2 – 1.2	1200	0.6%, 0.2 – 1.9	534	0.9%, 0.2 – 3.5	270	5.4%, 1.4 – 20.0	36
Middle tertile	75	0.3%, 0.1 – 1.0	1197	1.5%, 0.7 – 3.1	513	0.0%, 0.0 -0.0	282	6.1%, 1.6 – 22.5	36
High tertile	75	0.2%, 0.1 – 0.9	1277	1.0%, 0.4 – 2.4	505	0.0%, 0.0 -0.0	283	0.0%, 0.0 – 0.0	33
Low tertile	80	2.0%, 1.3 – 3.1	606	4.1%, 2.5 – 6.8	237	2.1%, 0.8 – 5.5	147	18.2%, 7.7 – 39.7	15
Middle tertile	80	2.3%, 1.5 – 3.6	608	4.6%, 3.0 – 7.1	251	0.4%,0.1 -2.8	144	23.6%, 11.9 – 43.4	22
High tertile	80	1.8%, 1.1 – 2.9	595	6.1%, 4.1 – 9.0	237	1.2%, 0.4 – 3.6	166	16.6%, 5.3 – 45.3	12
Low tertile	85	5.7%, 3.9 – 8.3	260	10.8%, 7.2 – 16.3	77	7.1%, 3.6 – 13.7	66	24.6%, 11.2 – 48.8	9
Middle tertile	85	4.8%, 3.2 – 7.0	266	9.1%, 6.0 – 13.8	95	3.4%, 1.2 – 9.3	68		
High tertile	85	7.6%, 5.5 – 10.5	240	17.8%, 13.2 – 23.8	90	2.9%, 1.1 – 7.4	77	32.2%, 11.3 -71.6	5
Low tertile	90	11.6%, 8.1 – 16.6	80	24.4%, 16.9 – 34.5	28	8.8%, 4.5 – 16.7	17		
Middle tertile	90	14.4%, 9.6 – 21.5	53	21.6%, 14.8 – 30.9	22	7.9%, 3.2 – 18.8	6		
High tertile	90	15.2%, 11.1 – 20.6	67	32.3%, 22.8 – 44.3	15	9.6%, 3.8 – 23.1	16		
Low tertile	95	14.0%, 9.6 – 20.2	8	31.9%, 19.0 – 50.4	6	8.8%, 4.5 – 16.7	6		
Middle tertile	95	28.5%, 14.5 – 51.2	6	32.3%, 21.1 – 47.3	8	7.9%, 3.2 – 18.8	2		
High tertile	95	21.3%, 15.4 – 29.3	7	76.8%, 61.4 – 89.4	1	19.5%, 7.0 – 47.7	4		

APOE: Apolipoprotein E, Dementia risk is determine using 5 years of age intervals accounted for death as competing risk, The cumulative incidence was calculated up to 95 years of age, beyond age 95 the data was very limited with no participant alive or demented also data was also sparse, similar case for APOE e4e4 beyond age 85 . N is number of participants at risk is for APOE categories for each PRS tertile. Empty cells show data was sparse or that the participants at those ages and APOE/PRS categories were not demented or alive.



**Table S6: Cumulative incidence of cognitive decline stratified by *APOE* genotypes, accounting for death as a competing risk**

<i>APOE</i> genotypes	Age, years*	Participants at risk N	Risk, [95% Confidence Interval]
$\epsilon 2/\epsilon 2:\epsilon 2/\epsilon 3$	75	668	7.3% [5.4-9.8]
$\epsilon 3/\epsilon 3$	75	2966	6.2% [5.4-7.2]
$\epsilon 2/\epsilon 4:\epsilon 3/\epsilon 4$	75	1233	7.8% [6.3-9.5]
$\epsilon 4/\epsilon 4$	75	76	15.9 % [9.7-25.4]
$\epsilon 2/\epsilon 2:\epsilon 2/\epsilon 3$	80	352	19.0% [16.1-22.4]
$\epsilon 3/\epsilon 3$	80	1346	20.8% [19.2-22.4]
$\epsilon 2/\epsilon 4:\epsilon 3/\epsilon 4$	80	504	27.5% [24.9-30.4]
$\epsilon 4/\epsilon 4$	80	34	33.1% [23.6–45.1]
$\epsilon 2/\epsilon 2:\epsilon 2/\epsilon 3$	85	155	35.3% [30.5-39.6]
$\epsilon 3/\epsilon 3$	85	553	37.2% [36.4-41.0]
$\epsilon 2/\epsilon 4:\epsilon 3/\epsilon 4$	85	174	45.7% [46.5-53.9]
$\epsilon 4/\epsilon 4$	85	9	52.9% [46.1–76.2]
$\epsilon 2/\epsilon 2:\epsilon 2/\epsilon 3$	90	26	54.9% [48.4-61.7]
$\epsilon 3/\epsilon 3$	90	134	52.9% [49.7-56.1]
$\epsilon 2/\epsilon 4:\epsilon 3/\epsilon 4$	90	33	67.3% [62.0-72.4]
$\epsilon 4/\epsilon 4$	90	2	81.8% [59.6-95.9]
$\epsilon 2/\epsilon 2:\epsilon 2/\epsilon 3$	95	6	63.7% [55.2-72.1]
$\epsilon 3/\epsilon 3$	95	12	64.4% [59.8 -68.9]
$\epsilon 2/\epsilon 4:\epsilon 3/\epsilon 4$	95	4	75.1% [68.0-81.7]
$\epsilon 4/\epsilon 4$	95	1	81.8% [59.6-95.9]
*Five-year longitudinal age from baseline to cognitive decline or censored			

**Table S7: Cumulative incidence of cognitive decline stratified by tertiles of a polygenic risk score (PRS), accounting for death as a competing risk**

PRS Tertiles	Age, years*	Participants at risk N	Risk, [95% Confidence Interval]
Low	75	1662	6.7% [5.5-8.1]
Middle	75	1608	6.8% [5.6-8.2]
high	75	1677	7.3% [6.1-8.7]
Low	80	748	21.5% [19.4-23.8]
Middle	80	752	22.7% [20.5-25.0]
high	80	730	22.9% [20.8-25.2]
Low	85	283	38.9% [35.8-42.2]
Middle	85	315	38.7% [35.7-41.9]
high	85	290	39.8% [36.7-43.0]
Low	90	75	57.0% [52.7-61.4]
Middle	90	60	58.2% [53.7-62.8]
high	90	65	55.5% [51.4-59.8]
Low	95	4	66.3% [60.5-72.0]
Middle	95	2	74.5% [63.9-83.9]
high	95	6	66.8% [61.0-72.4]

\*Five-year longitudinal age from baseline to cognitive decline or censored

Table S8: Cumulative incidence of cognitive decline stratified by APOE genotypes and tertiles of a PRS

		APOE:e3e3		APOE:e3e4ande2e4		APOE:e2e2&e2e3		APOE:e4e4	
PRS Group	Age	Risk, 95% CI	N	Risk, 95% CI	N	Risk, 95% CI	N	Risk, 95% CI	N
Low tertile	75	5.9%, 4.5 – 7.7	987	6.3%, 4.3 – 9.3	422	8.9%, 5.4 – 14.5	223	27.5%, 14.6 – 48.1	27
Middle tertile	75	6.2%, 4.8 – 8.1	961	7.8%, 5.4 – 11.1	401	7.5%, 4.6 – 12.0	228	15.8%, 6.3 – 36.9	24
High tertile	75	6.6%, 5.2 – 8.4	1029	9.5%, 6.9 – 13.1	401	6.2%, 3.6 – 10.6	223	8.6%, 2.8 – 24.3	28
Low tertile	80	19.6%, 17.0 – 22.5	462	25.9%, 21.5 – 31.0	169	19.4%, 14.3 – 26.0	114	46.0%, 29.6 – 66.1	12
Middle tertile	80	21.1%, 18.5 – 24.1	460	28.1%, 23.5 – 33.3	169	20.4%,15.5 – 26.7	110	31.9%, 15.9 – 57.2	10
High tertile	80	21.5%, 18.9 – 24.5	431	29.4%, 24.8 – 34.5	163	18.1%, 13.5 – 24.0	127	49.7%, 19.7 – 88.5	3
Low tertile	85	37.8%, 33.8 – 42.1	187	43.7%, 37.0 – 50.9	47	35.7%, 28.2 – 44.5	44	52.0%, 34.1 – 72.6	6
Middle tertile	85	36.6%, 32.8 – 40.6	194	47.0%, 40.8 – 53.6	66	33.2%, 26.1 – 41.6	54	72.7%, 34.0 – 98.3	2
High tertile	85	37.6%, 33.6 – 41.8	171	46.6%, 40.3 – 53.3	64	38.1%, 31.0 – 46.4	54	73.2%, 35.9 – 98.0	2
Low tertile	90	55.8%, 50.4 – 61.4	53	63.4%, 54.1 – 72.7	11	55.0%, 44.0 – 67.2	13	52.0%, 34.2 – 72.6	6
Middle tertile	90	52.7%, 47.1 – 58.6	39	71.5%, 62.8 – 79.8	13	53.6%, 42.8 – 65.1	5		
High tertile	90	50.9%, 45.7 – 56.4	49	68.8%, 59.5 – 77.7	10	55.0%,44.3 – 65.8	9	96.7%, 85.7 – 99.8	1
Low tertile	95	66.0%, 58.4 – 73.5	3	65.6%, 56.1 – 75.0	2	66.1%, 52.7 – 79.1	4		
Middle tertile	95	80.0%, 73.4 – 85.9	1	79.6%, 68.2 – 89.0	2	53.6%, 42.8 – 65.1	4		
High tertile	95	63.1%, 55.4 – 70.8	5	77.7%, 65.8 – 87.8	2	63.4%, 50.4 – 76.2	4		

APOE: Apolipoprotein E, Cognitive decline incidence is measured using 5 years of age intervals accounted for death as a competing risk. The cumulative incidence was calculated up to 95 years of age, beyond age 95 the data was limited N is the number of participants at risk APOE categories for each PRS tertile, Empty cells show data was sparse or that the participants at those ages and APOE/PRS categories were not cognitive declined or alive.