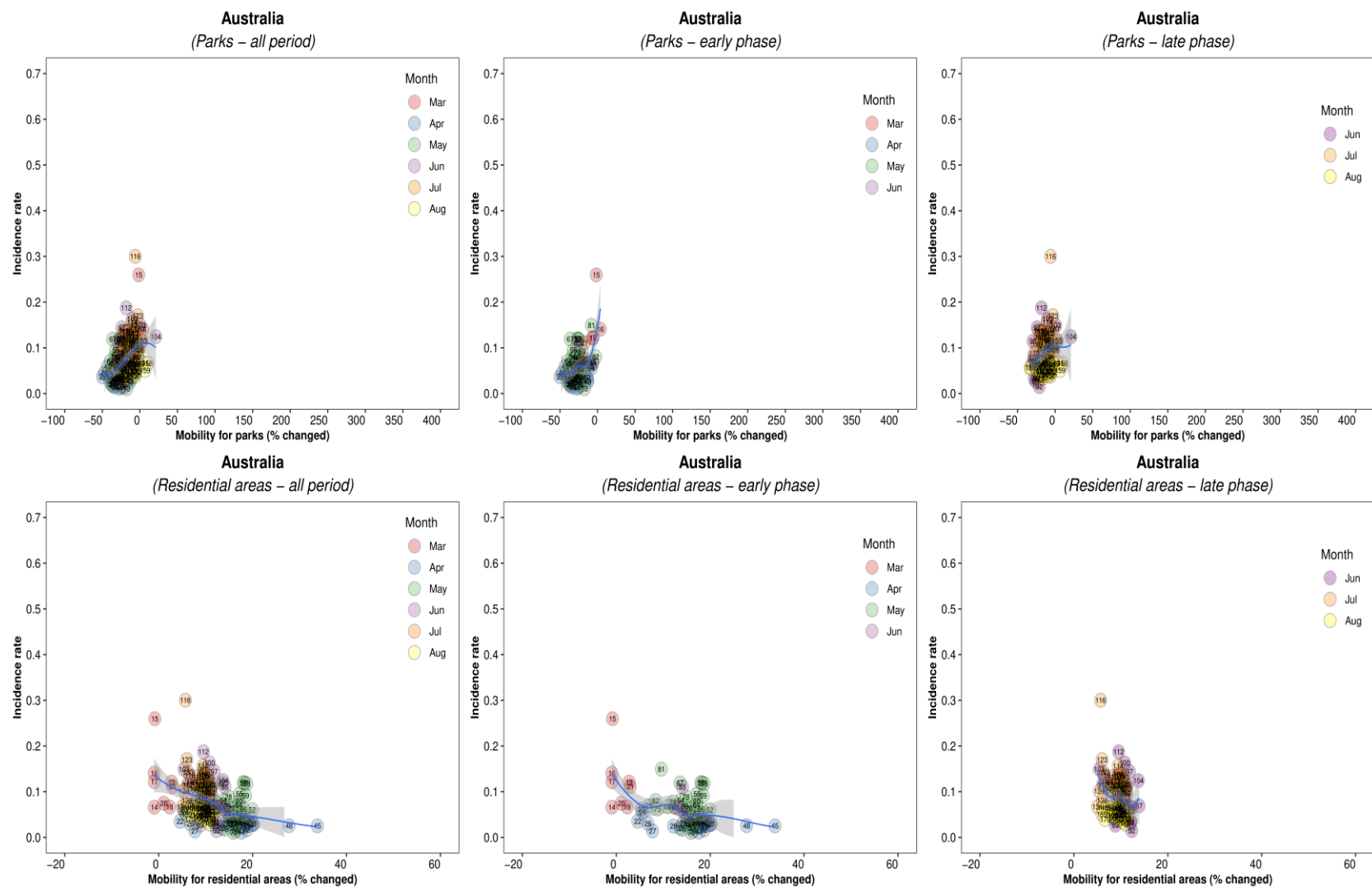
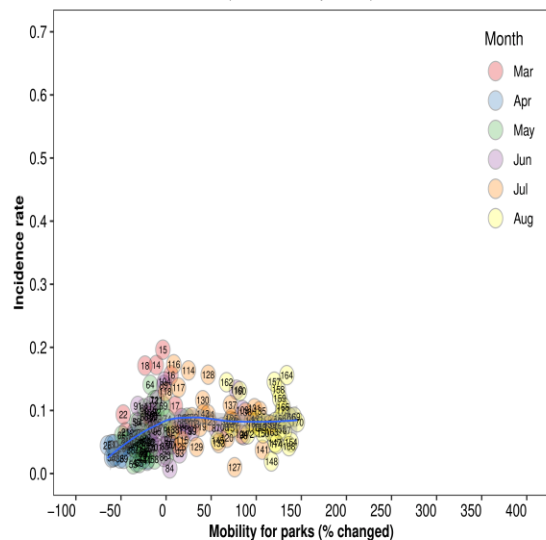




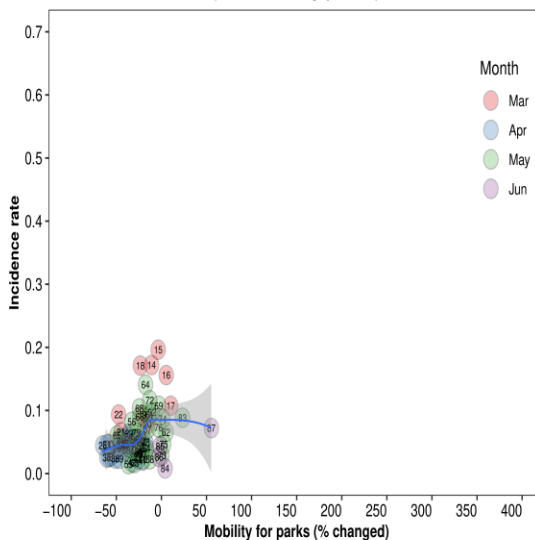
Supplementary Figure 2A. Association between new daily incidence rates of COVID-19 and mobility changes in 36 countries by early and late phase and other places (parks and residential areas) visited. Western Europe, North America, and Oceania



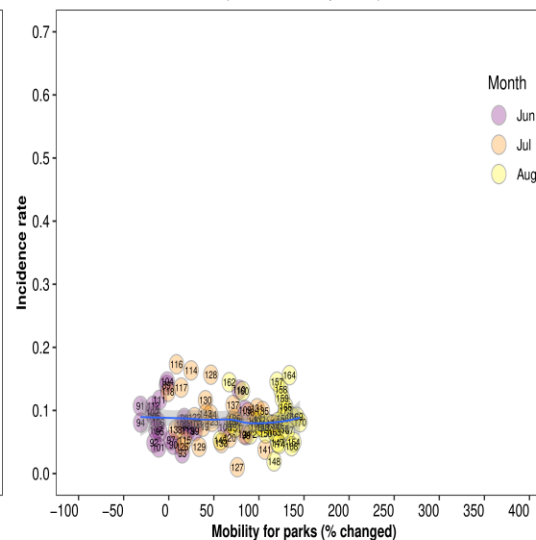
**Austria**  
(Parks – all period)



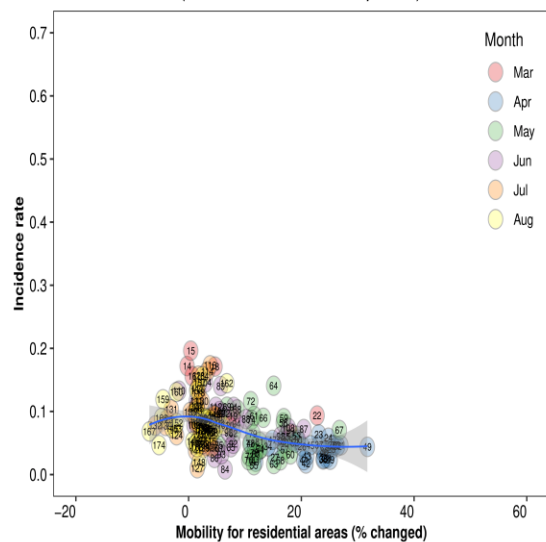
**Austria**  
(Parks – early phase)



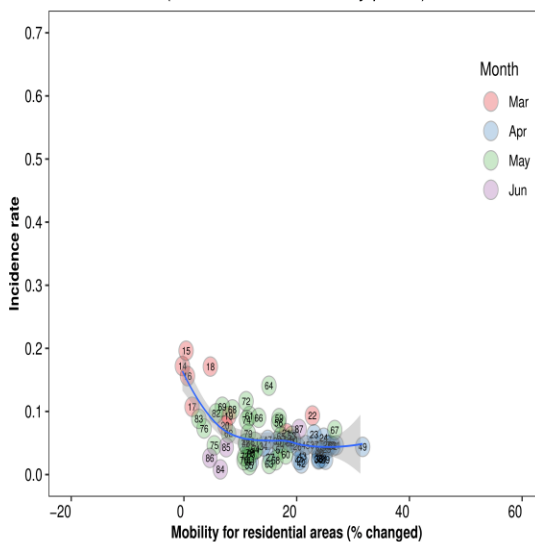
**Austria**  
(Parks – late phase)



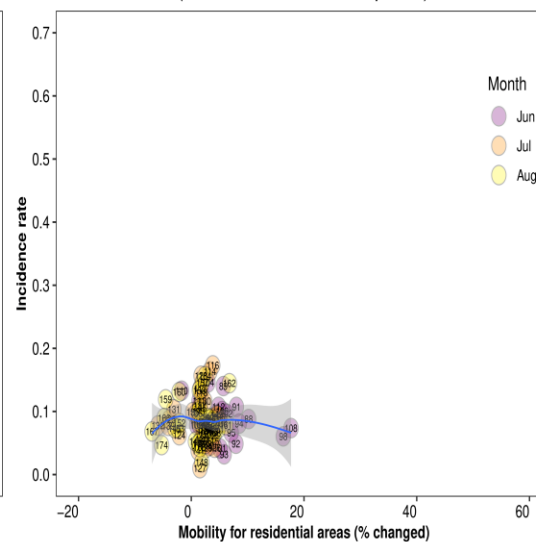
**Austria**  
(Residential areas – all period)



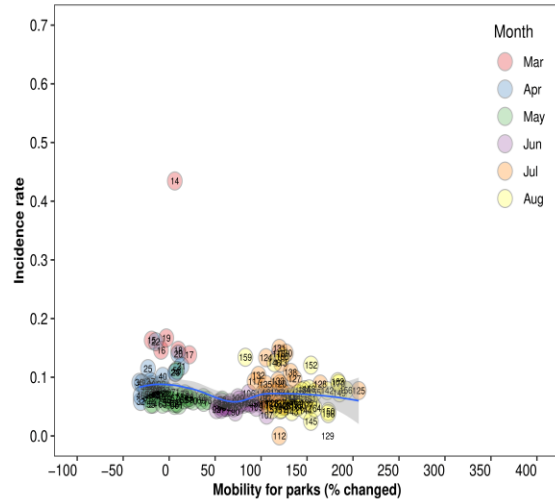
**Austria**  
(Residential areas – early phase)



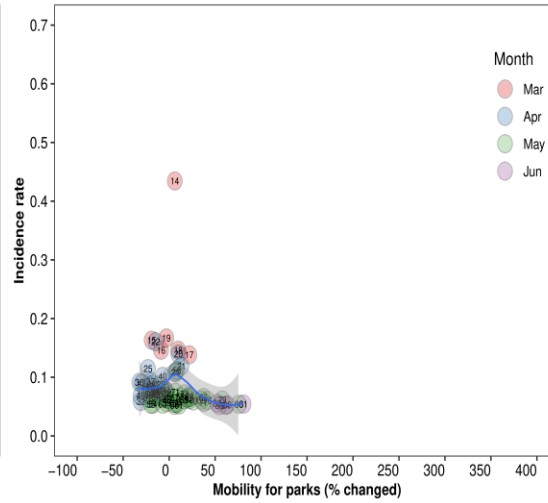
**Austria**  
(Residential areas – late phase)



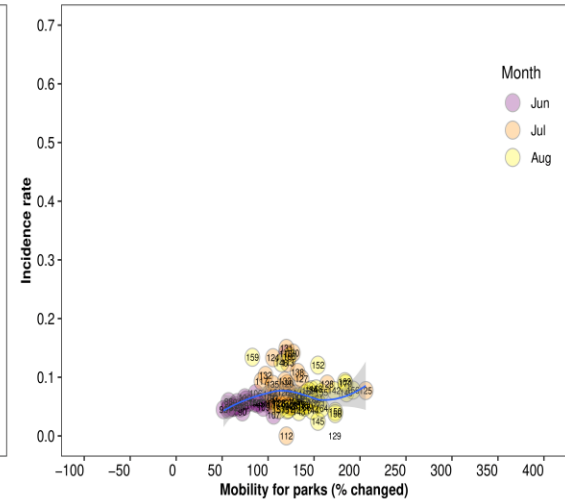
**Canada**  
(Parks – all period)



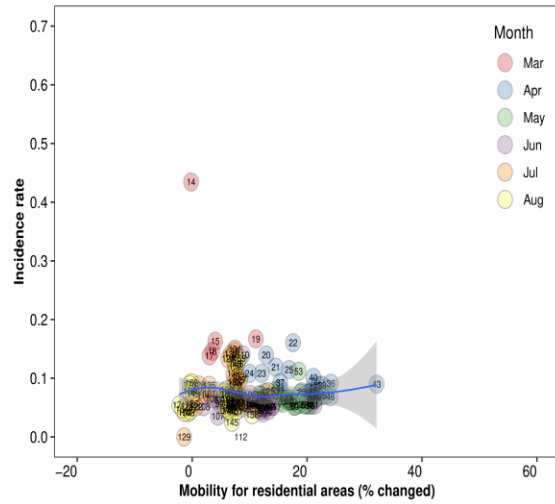
**Canada**  
(Parks – early phase)



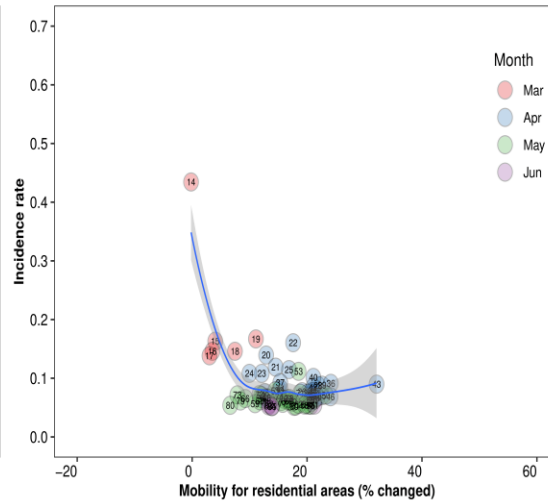
**Canada**  
(Parks – late phase)



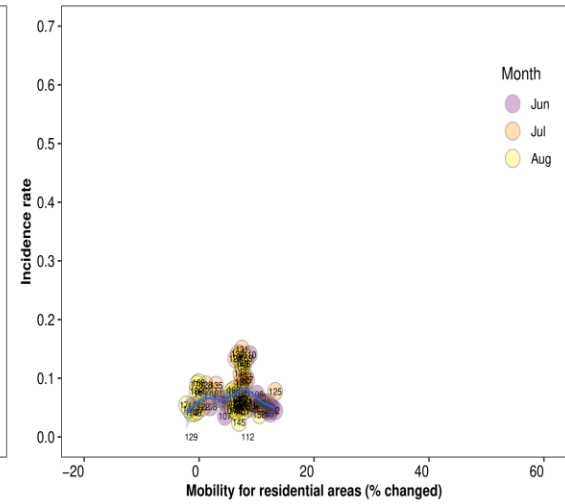
**Canada**  
(Residential areas – all period)



**Canada**  
(Residential areas – early phase)

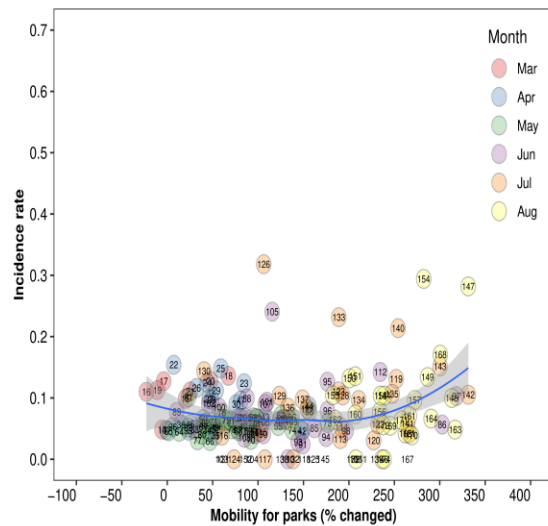


**Canada**  
(Residential areas – late phase)

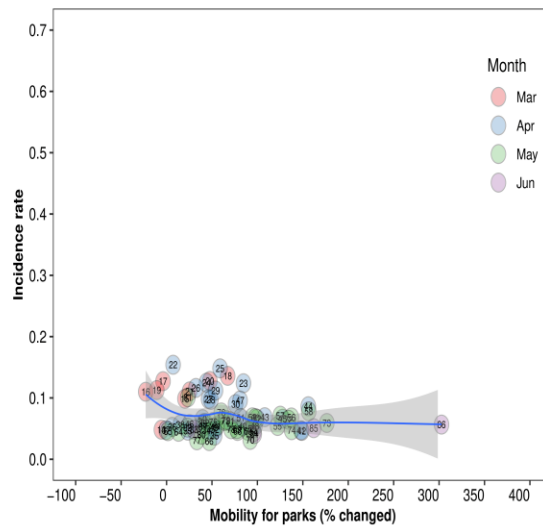




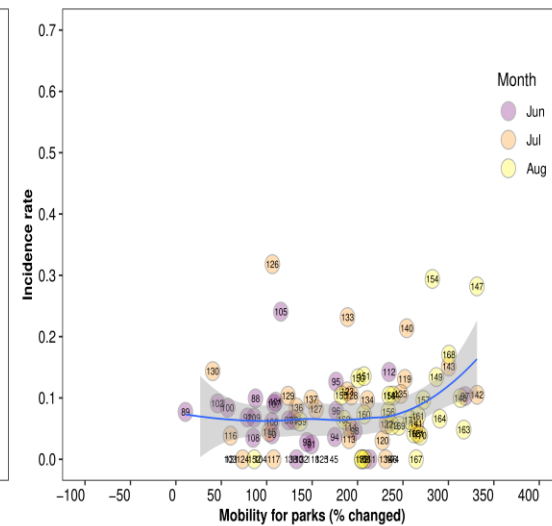
**Denmark**  
(Parks – all period)



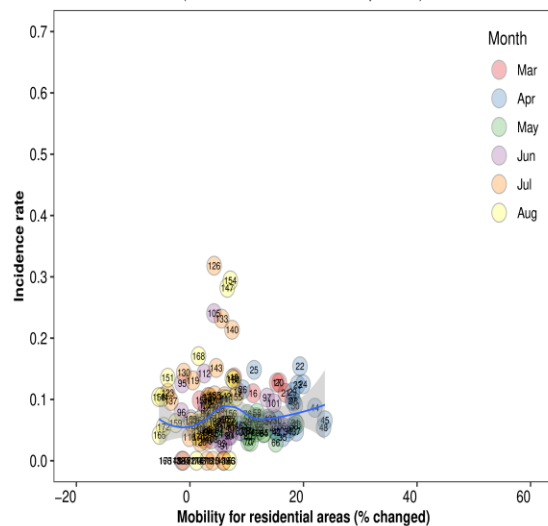
**Denmark**  
(Parks – early phase)



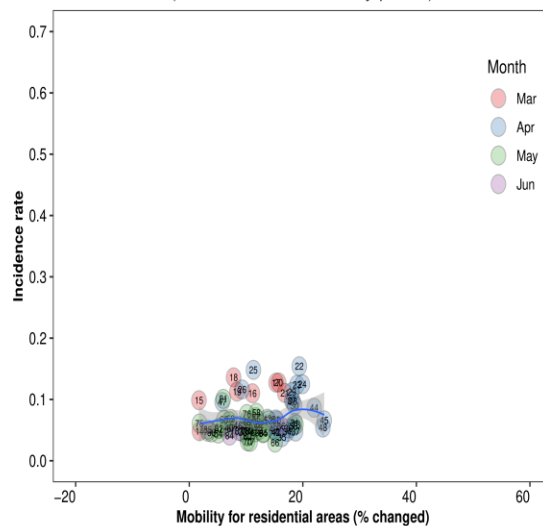
**Denmark**  
(Parks – late phase)



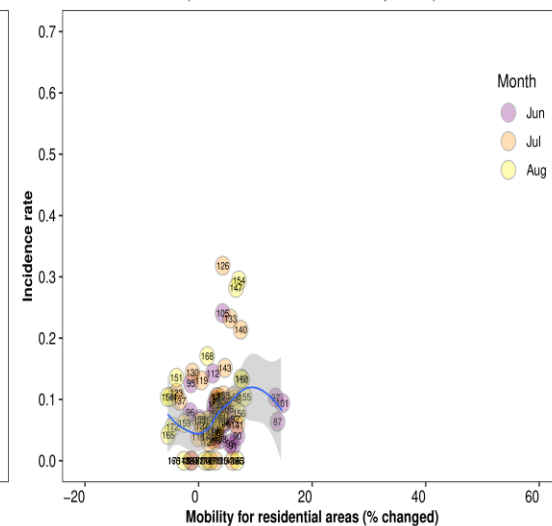
**Denmark**  
(Residential areas – all period)



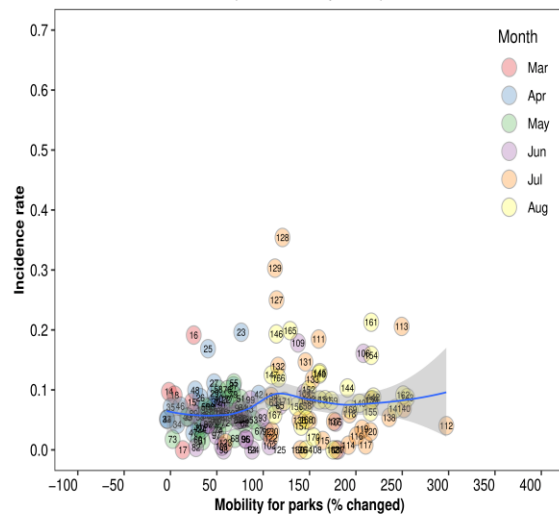
**Denmark**  
(Residential areas – early phase)



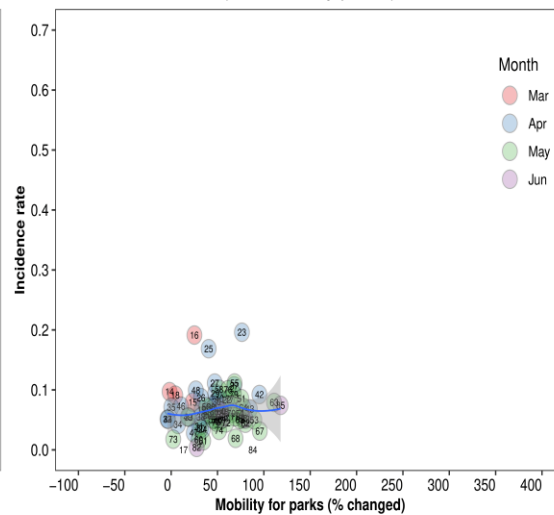
**Denmark**  
(Residential areas – late phase)



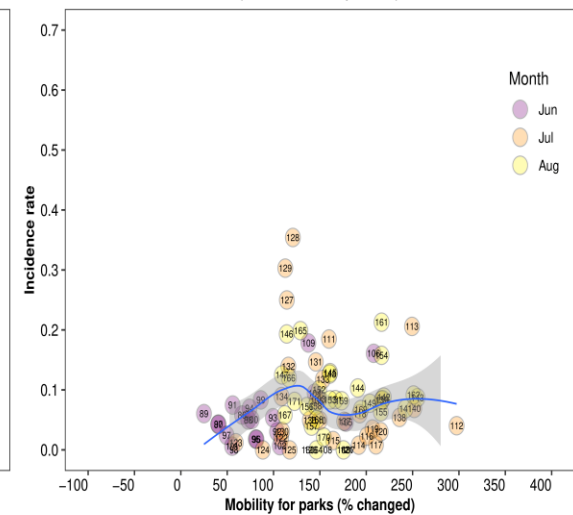
**Finland**  
(Parks – all period)



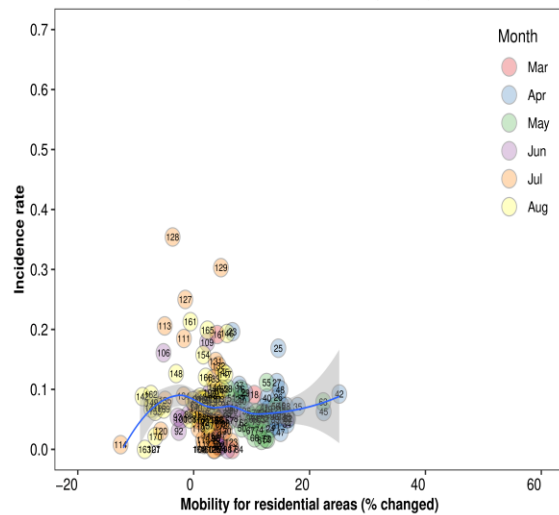
**Finland**  
(Parks – early phase)



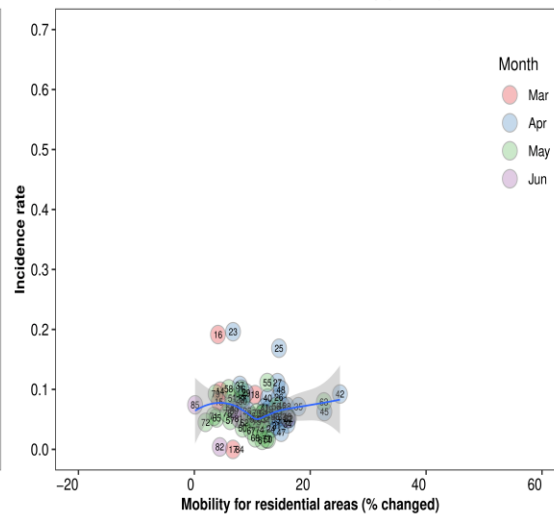
**Finland**  
(Parks – late phase)



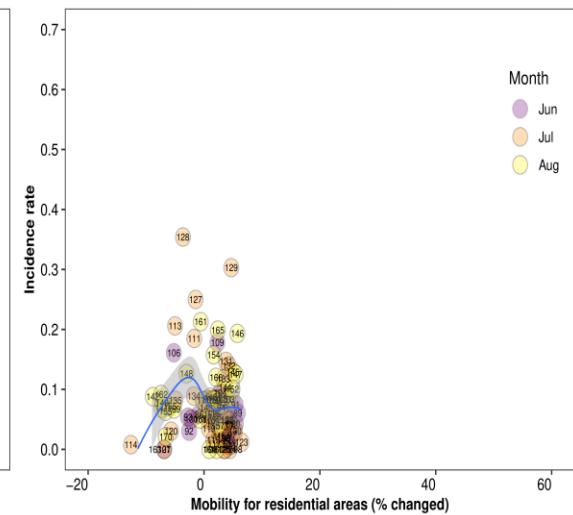
**Finland**  
(Residential areas – all period)



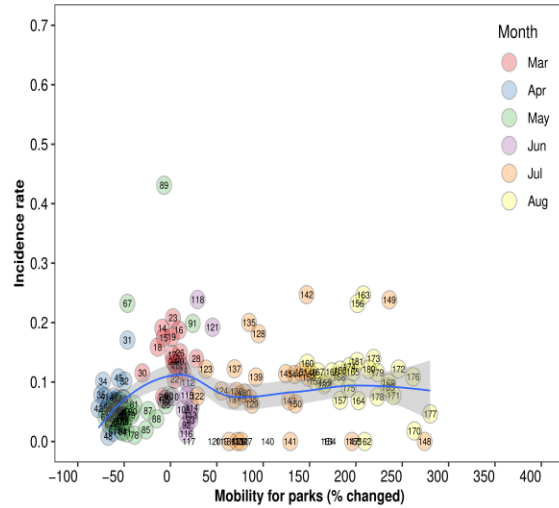
**Finland**  
(Residential areas – early phase)



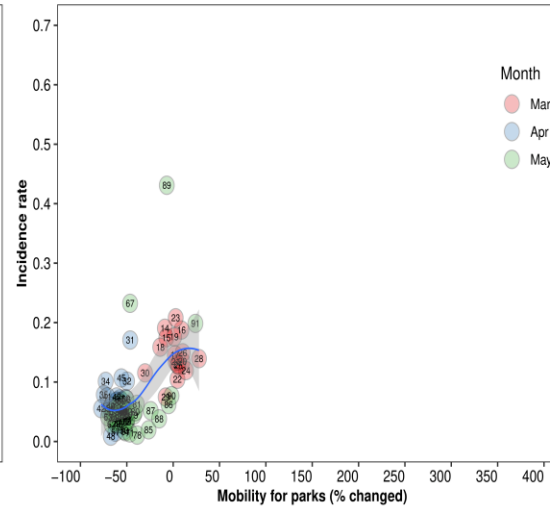
**Finland**  
(Residential areas – late phase)



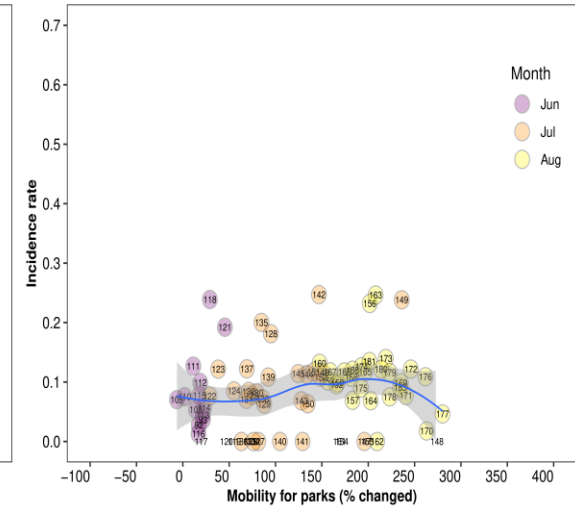
**France**  
(Parks – all period)



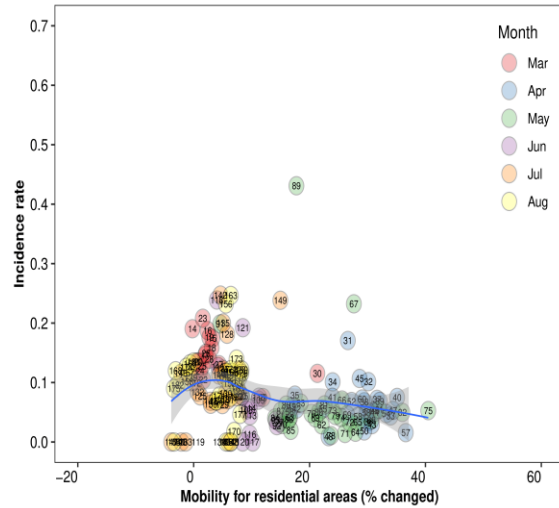
**France**  
(Parks – early phase)



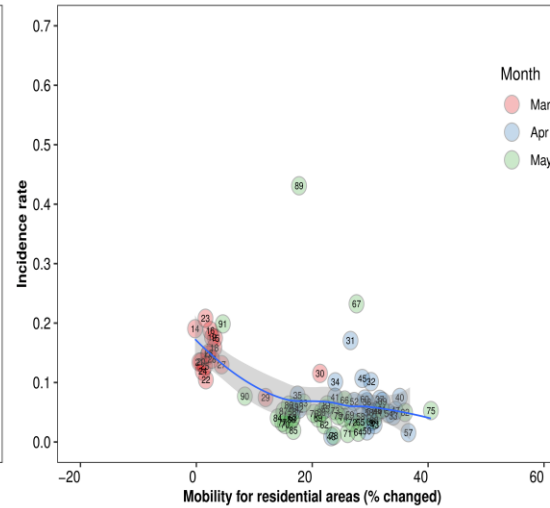
**France**  
(Parks – late phase)



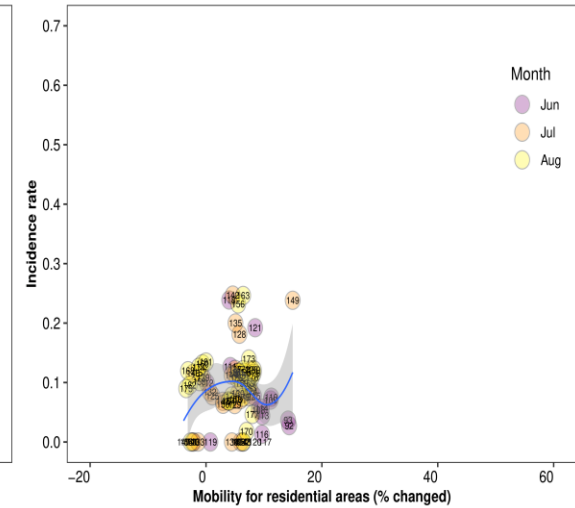
**France**  
(Residential areas – all period)



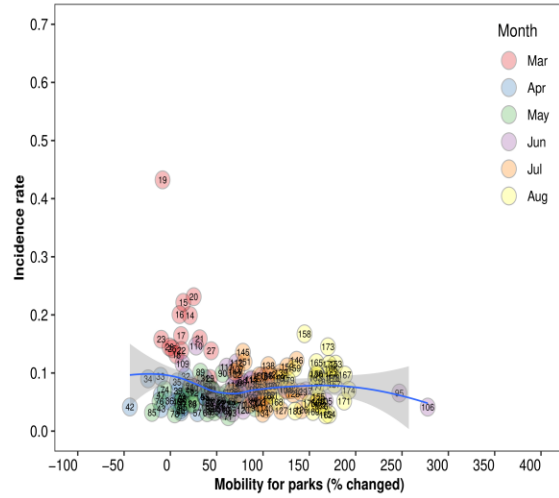
**France**  
(Residential areas – early phase)



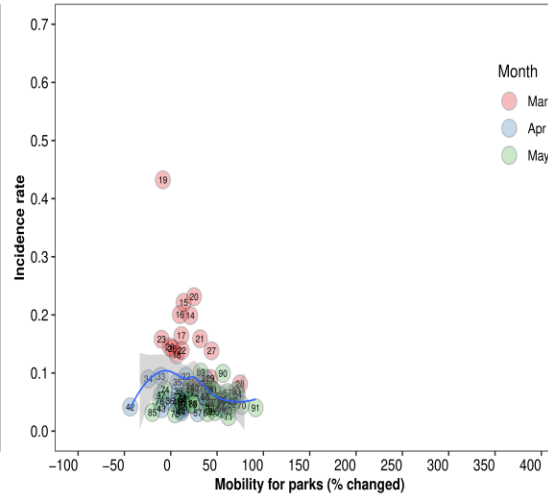
**France**  
(Residential areas – late phase)



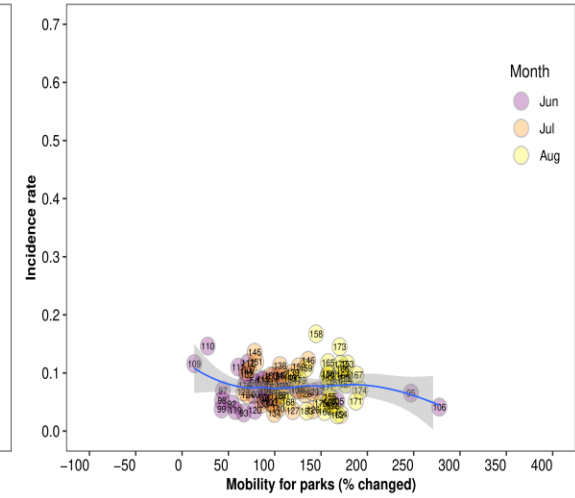
**Germany**  
(Parks – all period)



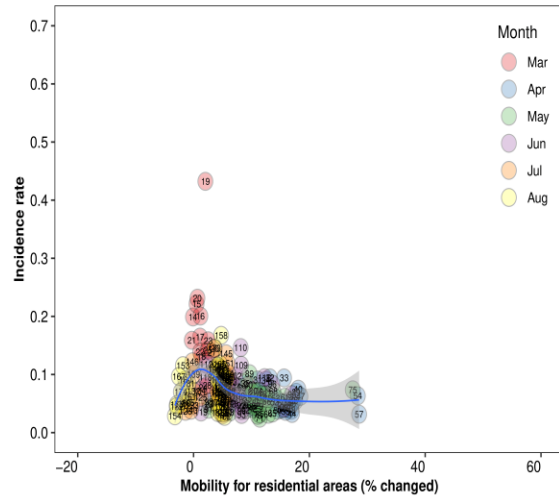
**Germany**  
(Parks – early phase)



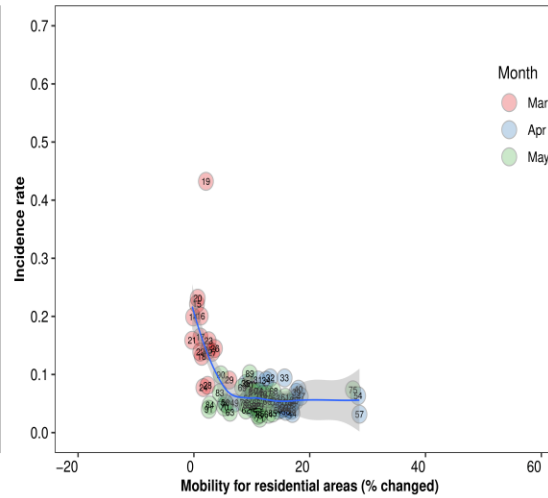
**Germany**  
(Parks – late phase)



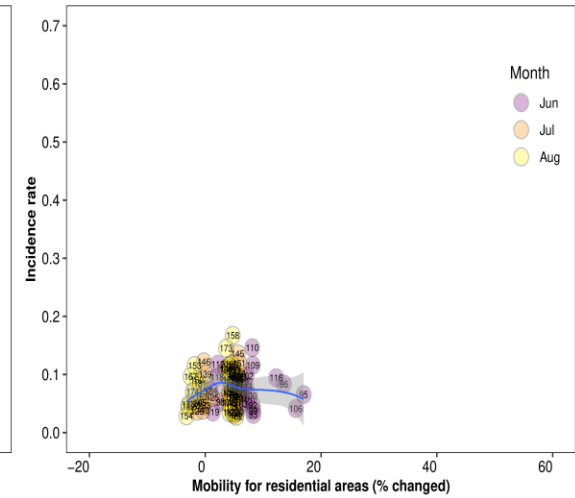
**Germany**  
(Residential areas – all period)



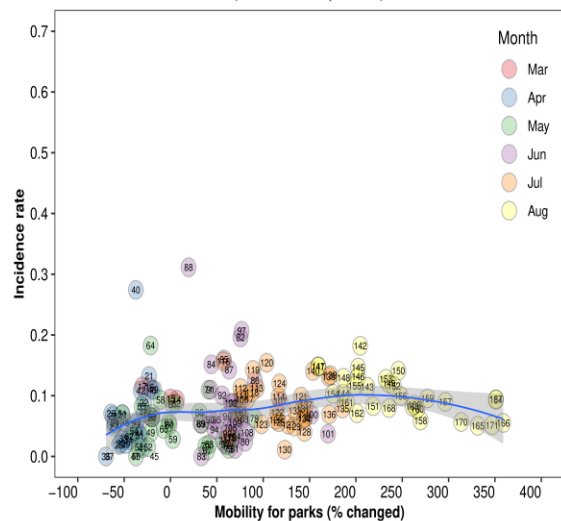
**Germany**  
(Residential areas – early phase)



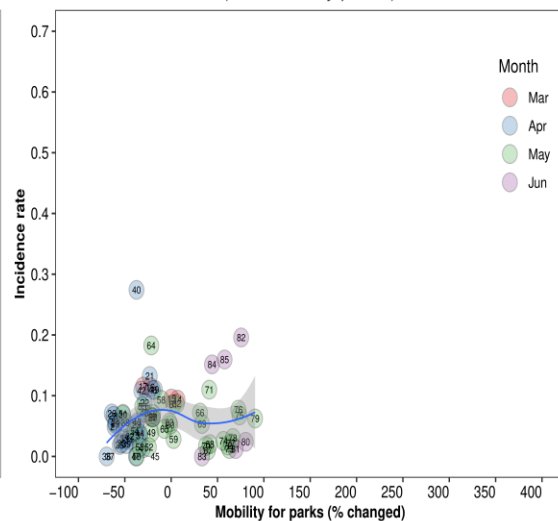
**Germany**  
(Residential areas – late phase)



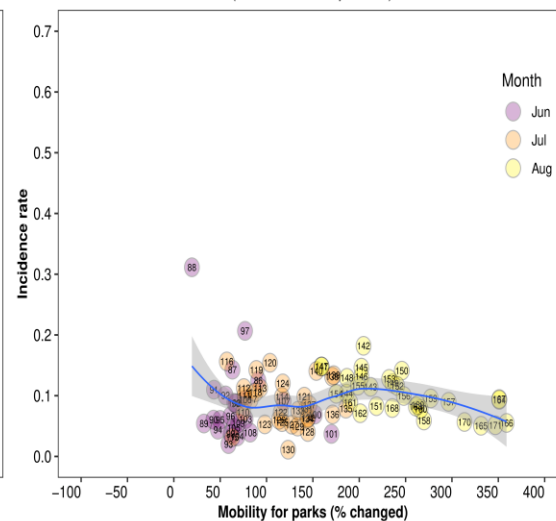
**Greece**  
(Parks – all period)



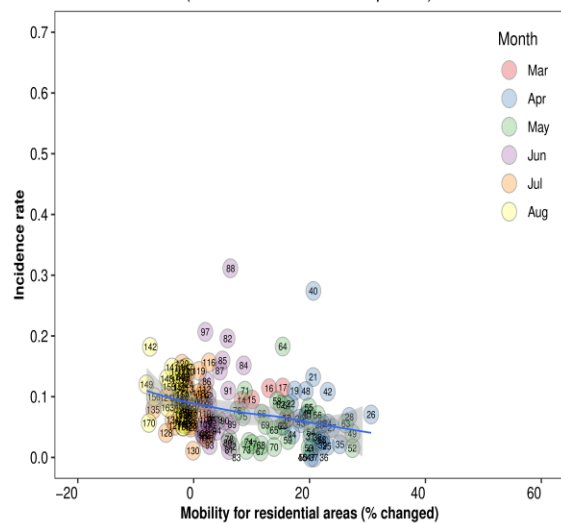
**Greece**  
(Parks – early phase)



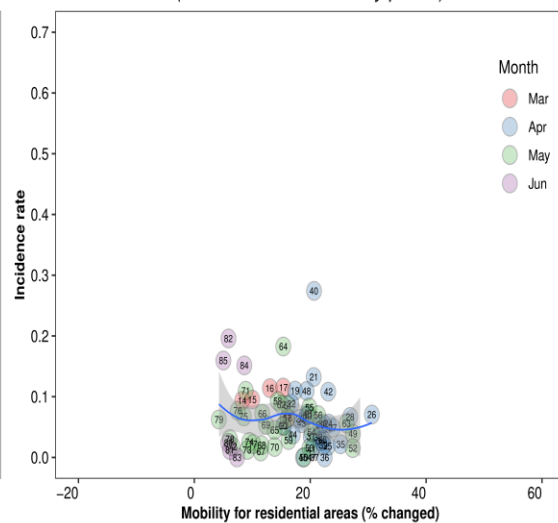
**Greece**  
(Parks – late phase)



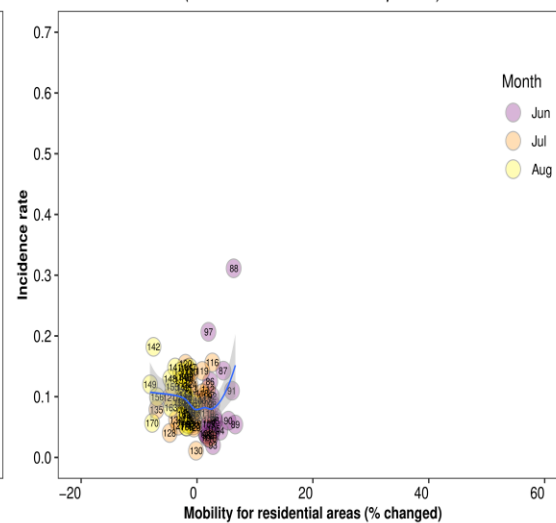
**Greece**  
(Residential areas – all period)



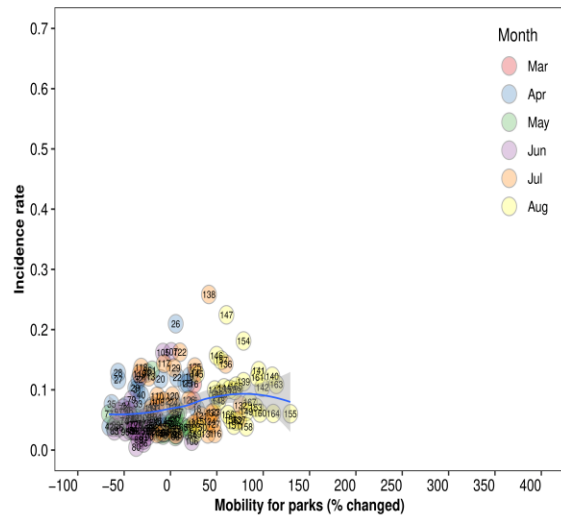
**Greece**  
(Residential areas – early phase)



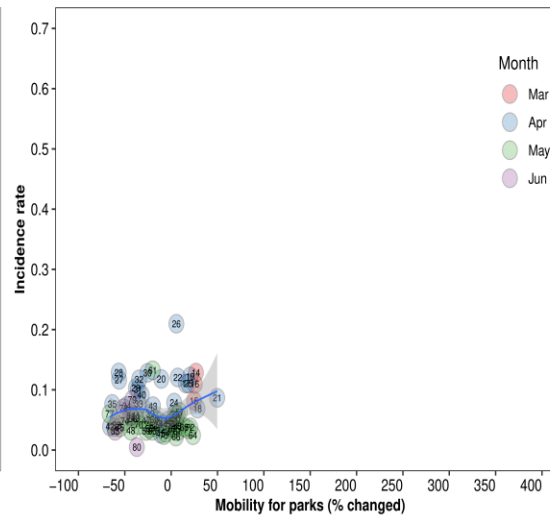
**Greece**  
(Residential areas – late phase)



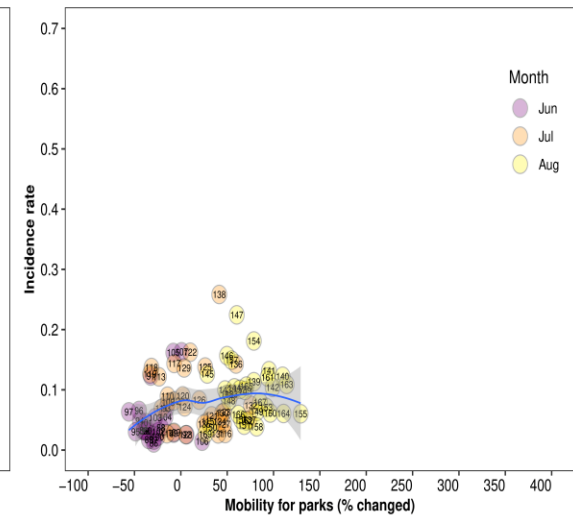
**Ireland**  
(Parks – all period)



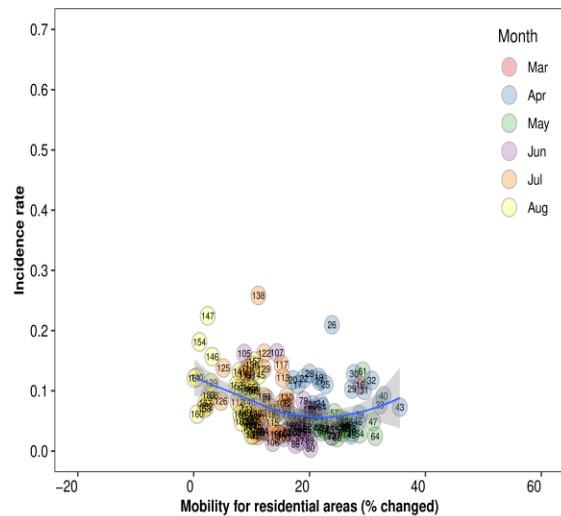
**Ireland**  
(Parks – early phase)



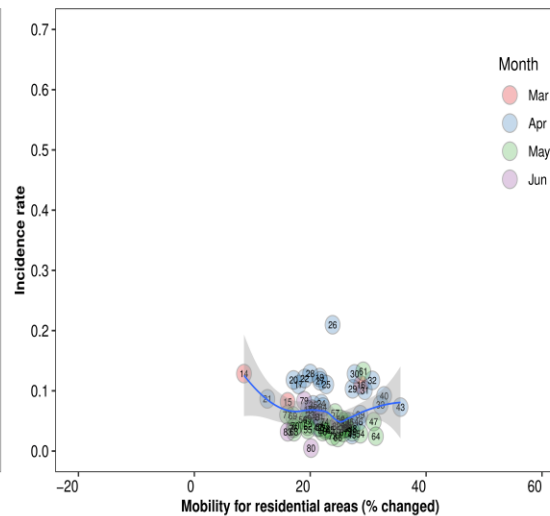
**Ireland**  
(Parks – late phase)



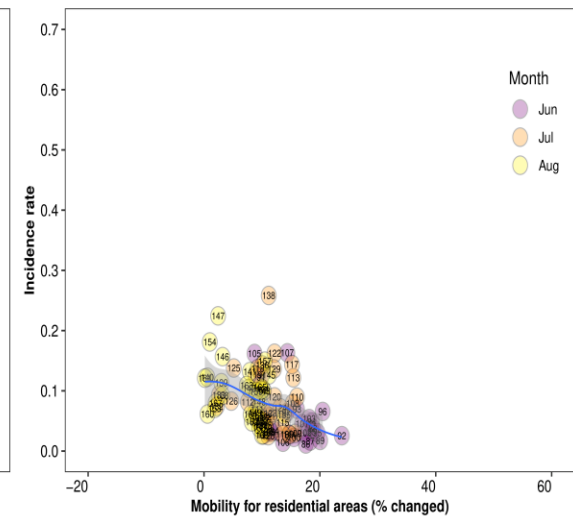
**Ireland**  
(Residential areas – all period)



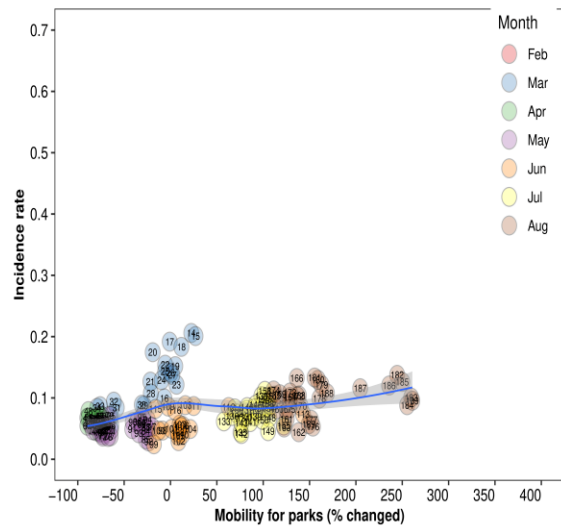
**Ireland**  
(Residential areas – early phase)



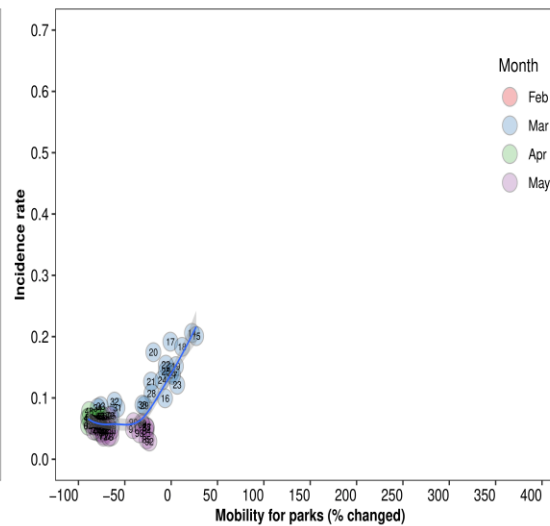
**Ireland**  
(Residential areas – late phase)



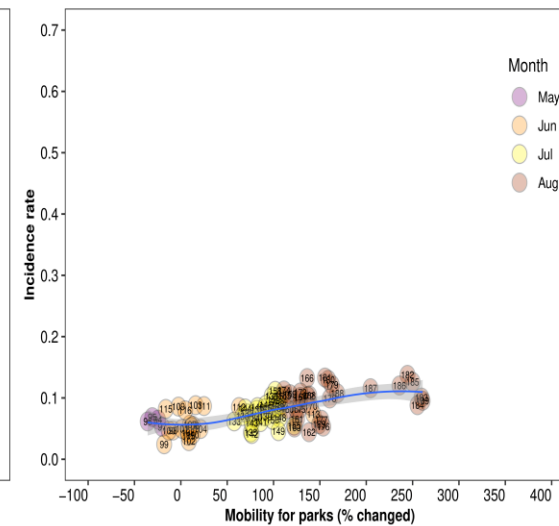
**Italy**  
(Parks – all period)



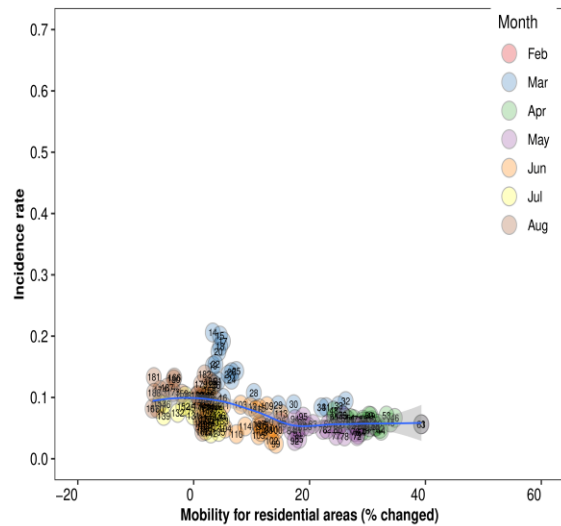
**Italy**  
(Parks – early phase)



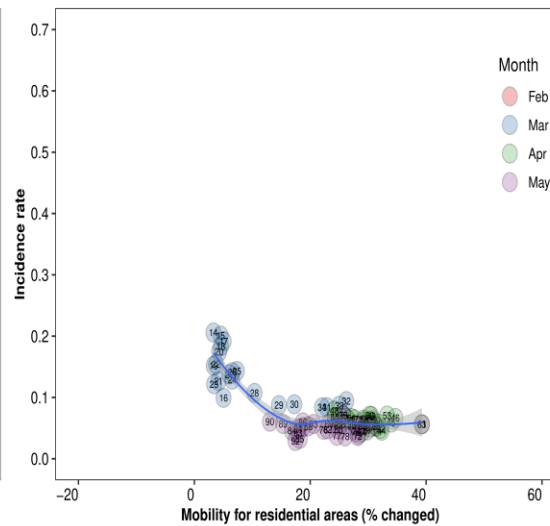
**Italy**  
(Parks – late phase)



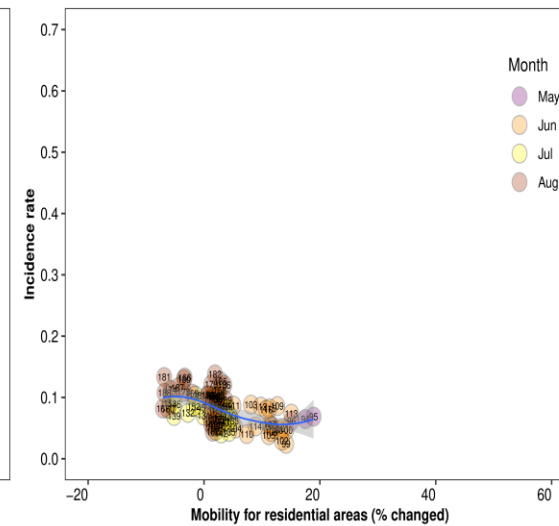
**Italy**  
(Residential areas – all period)



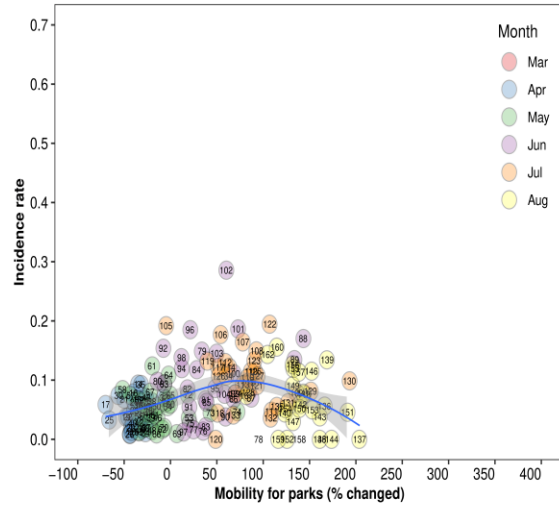
**Italy**  
(Residential areas – early phase)



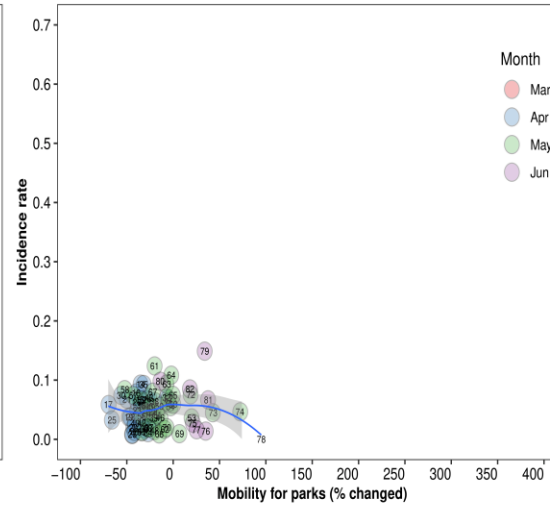
**Italy**  
(Residential areas – late phase)



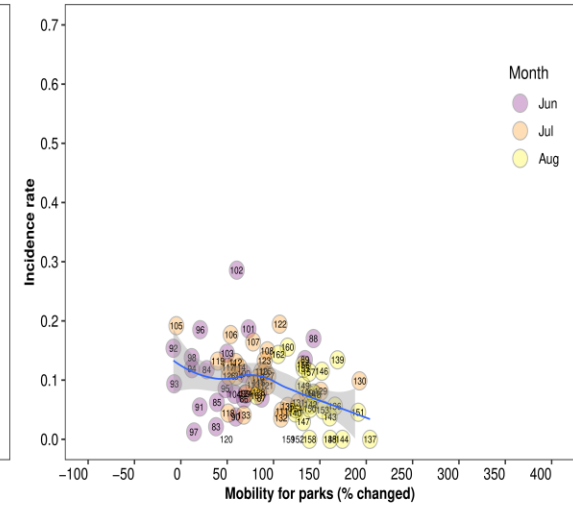
**Luxembourg**  
(Parks – all period)



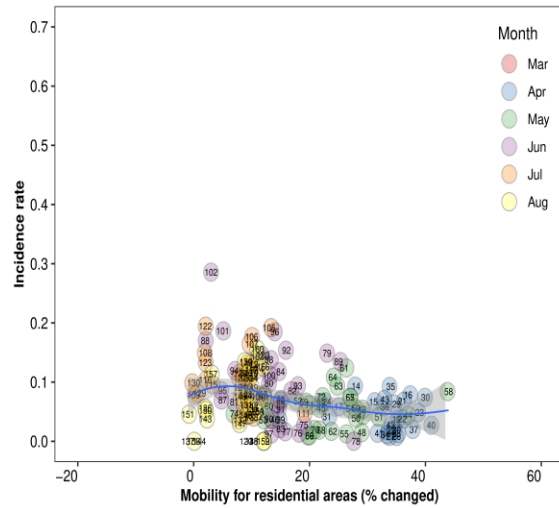
**Luxembourg**  
(Parks – early phase)



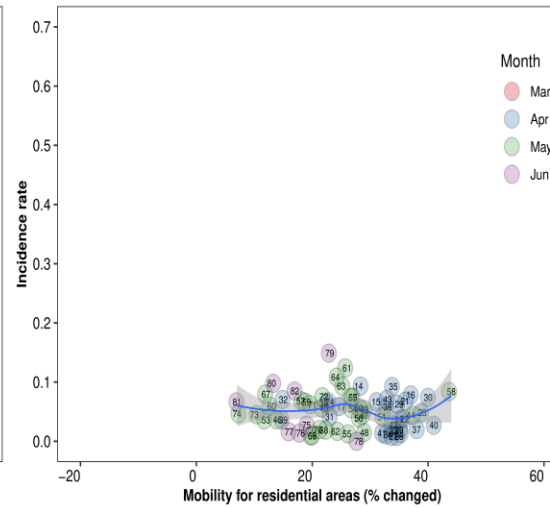
**Luxembourg**  
(Parks – late phase)



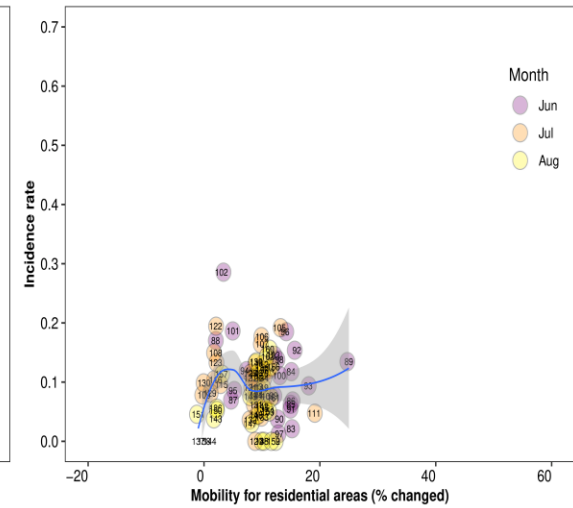
**Luxembourg**  
(Residential areas – all period)



**Luxembourg**  
(Residential areas – early phase)

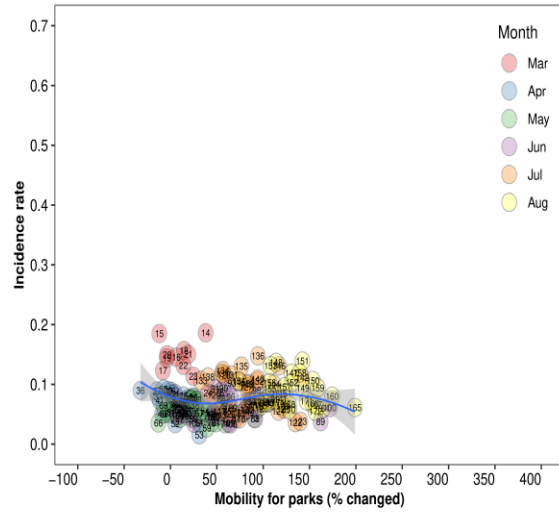


**Luxembourg**  
(Residential areas – late phase)

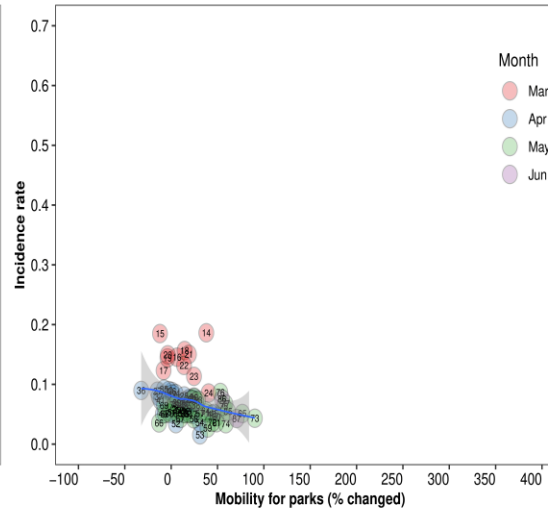




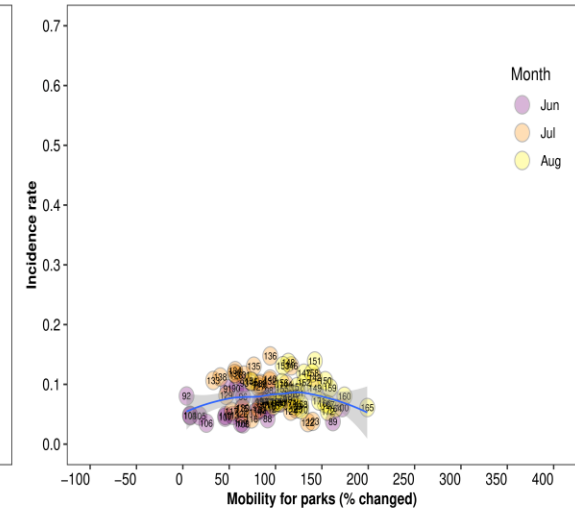
**Netherlands**  
*(Parks – all period)*



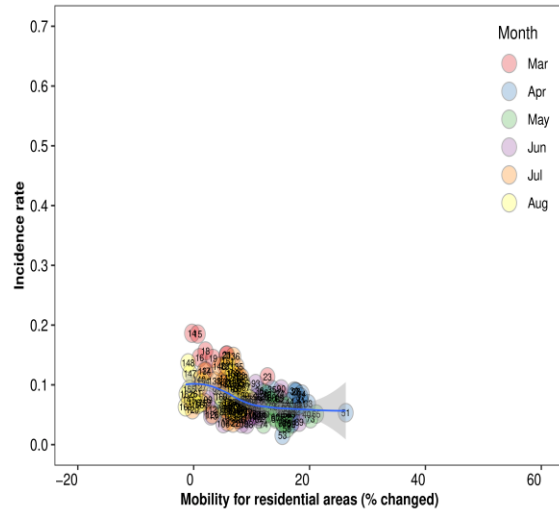
**Netherlands**  
*(Parks – early phase)*



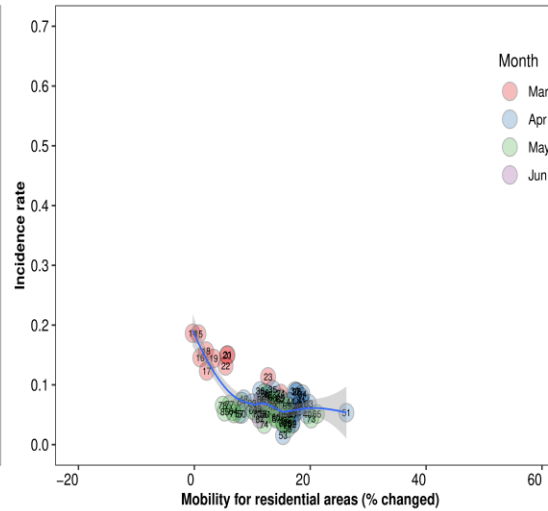
**Netherlands**  
*(Parks – late phase)*



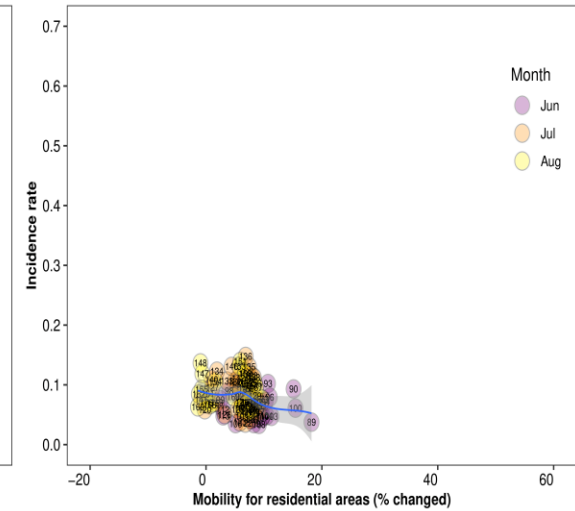
**Netherlands**  
*(Residential areas – all period)*



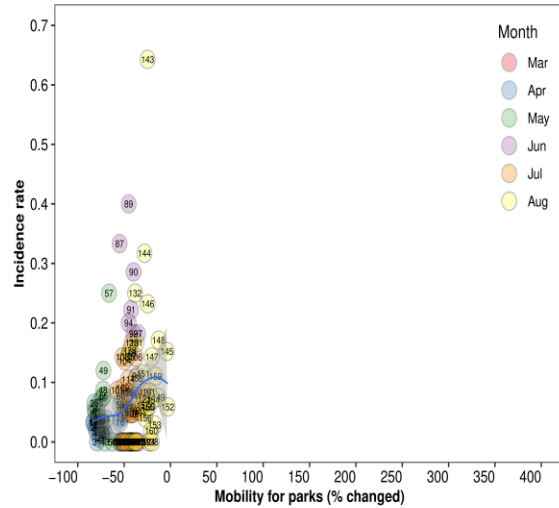
**Netherlands**  
*(Residential areas – early phase)*



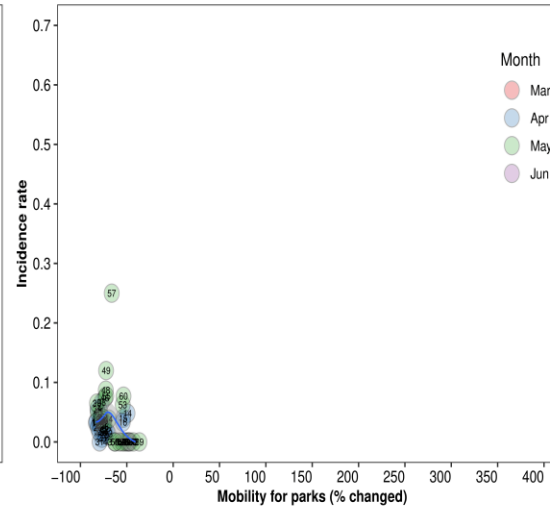
**Netherlands**  
*(Residential areas – late phase)*



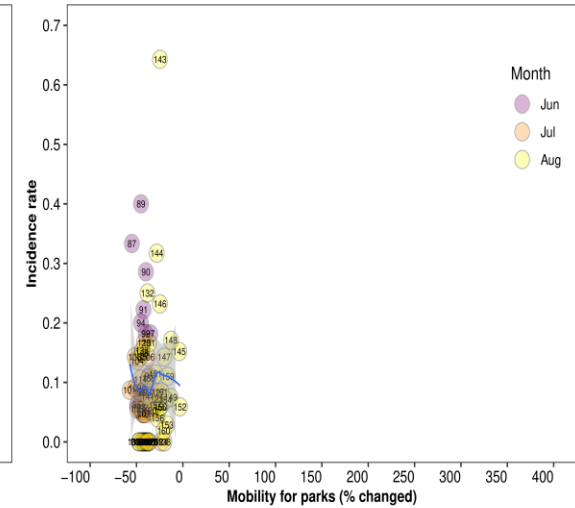
**New Zealand**  
(Parks – all period)



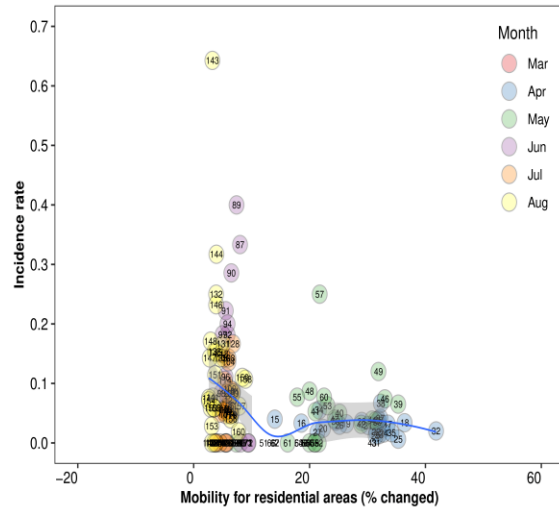
**New Zealand**  
(Parks – early phase)



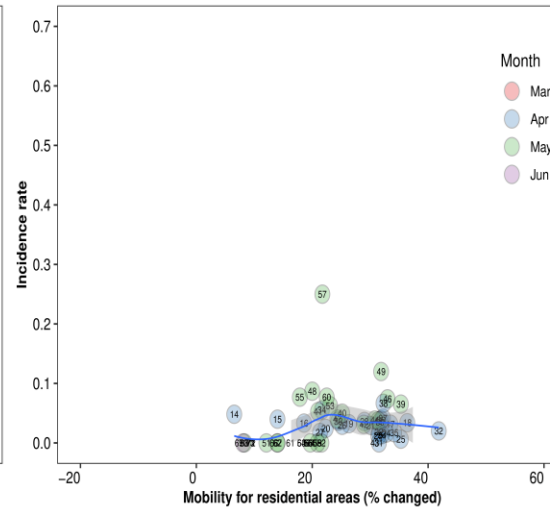
**New Zealand**  
(Parks – late phase)



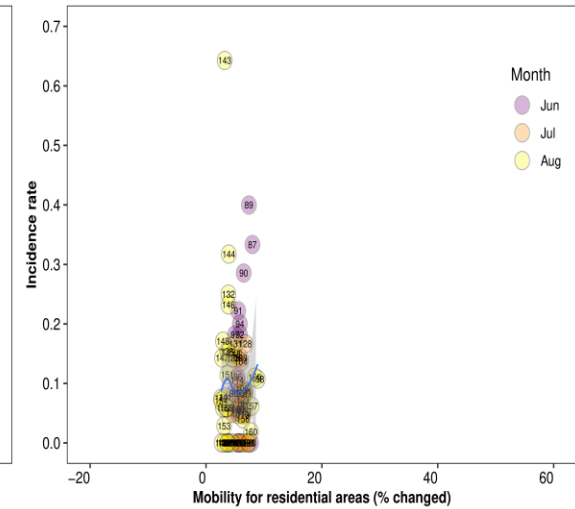
**New Zealand**  
(Residential areas – all period)



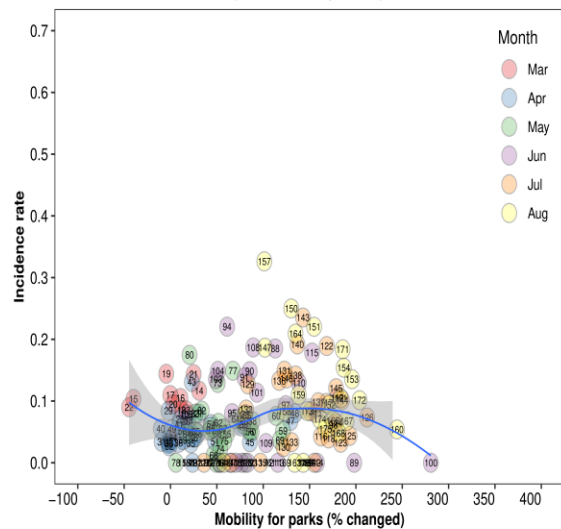
**New Zealand**  
(Residential areas – early phase)



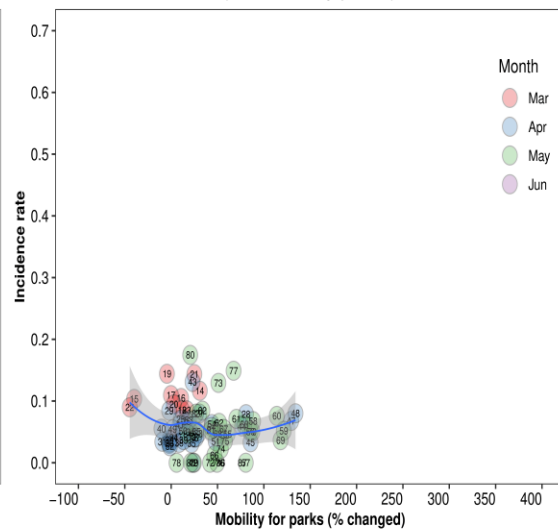
**New Zealand**  
(Residential areas – late phase)



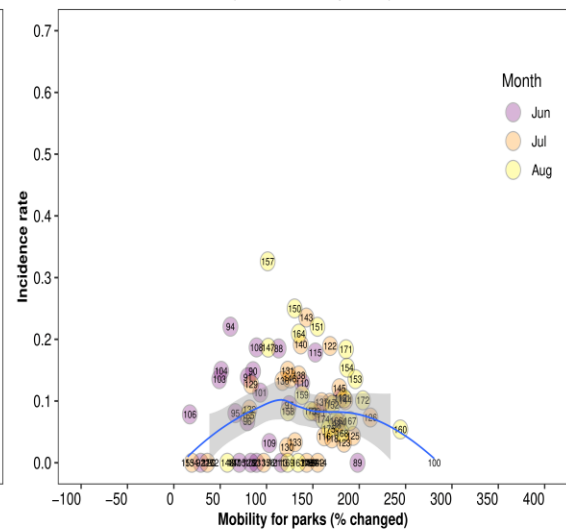
**Norway**  
(Parks – all period)



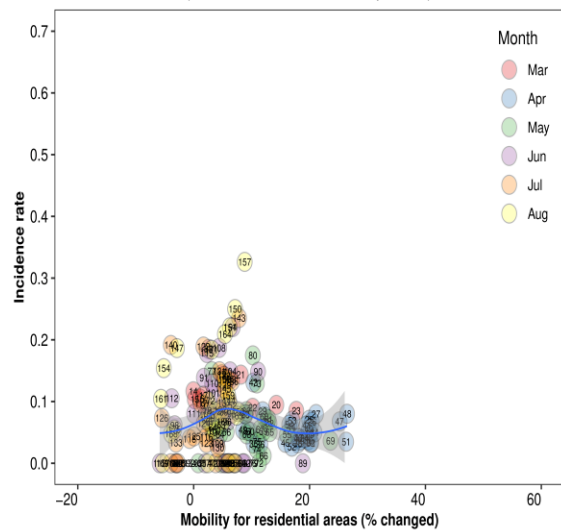
**Norway**  
(Parks – early phase)



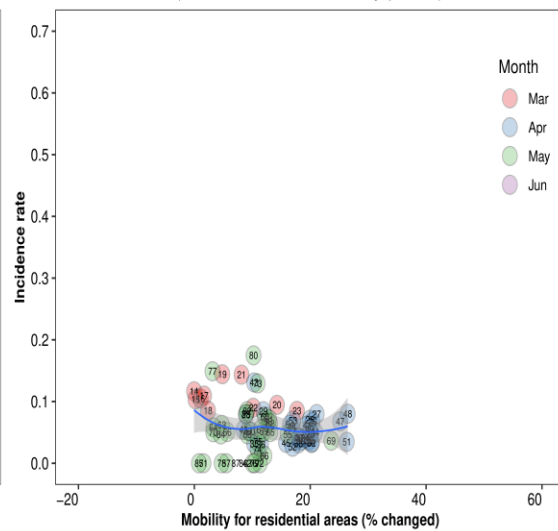
**Norway**  
(Parks – late phase)



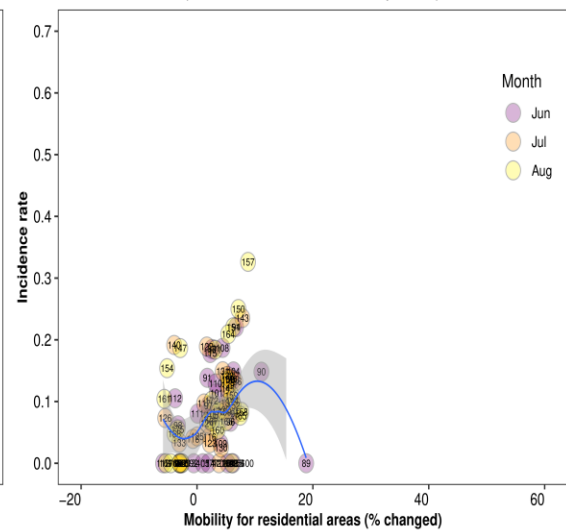
**Norway**  
(Residential areas – all period)



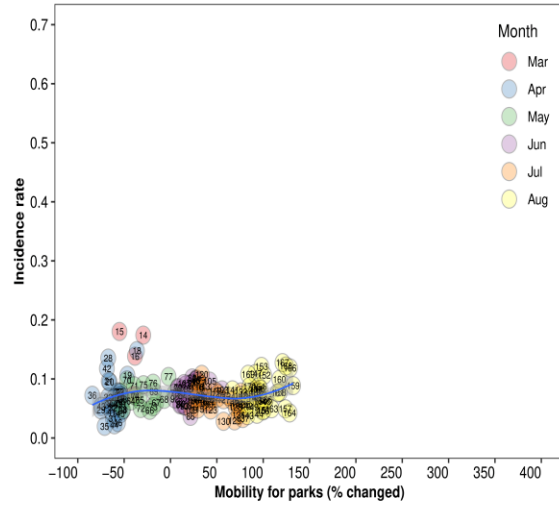
**Norway**  
(Residential areas – early phase)



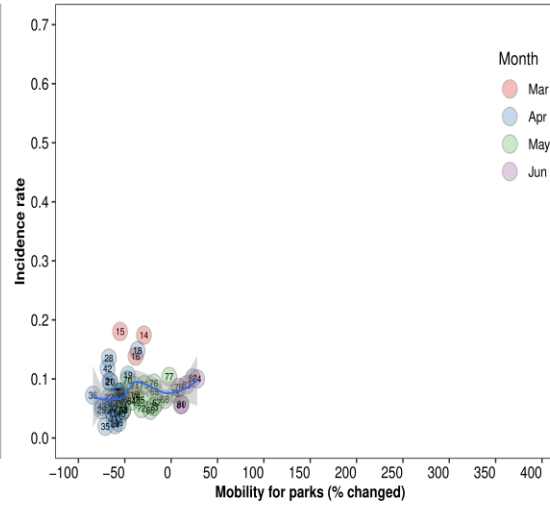
**Norway**  
(Residential areas – late phase)



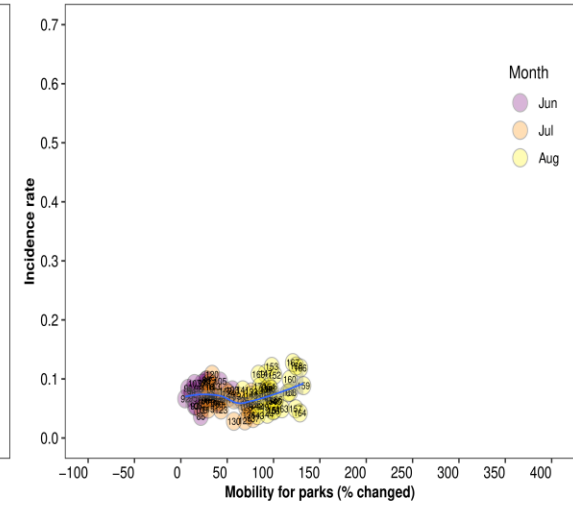
**Portugal**  
*(Parks – all period)*



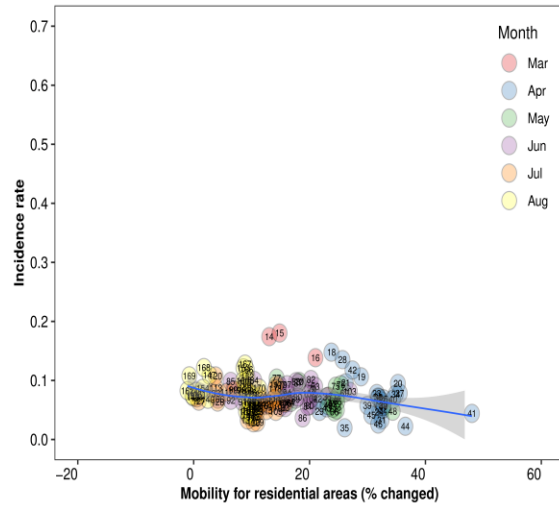
**Portugal**  
*(Parks – early phase)*



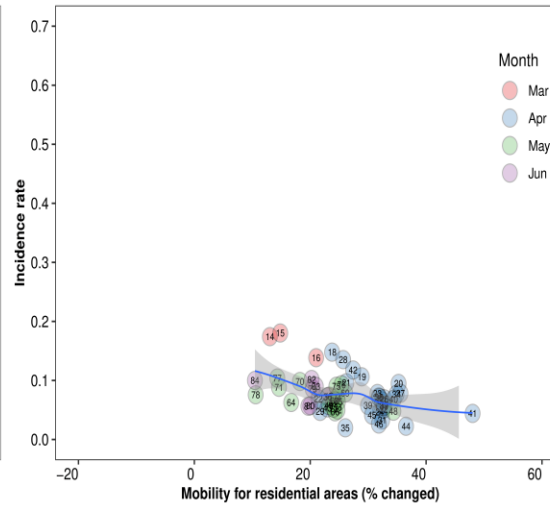
**Portugal**  
*(Parks – late phase)*



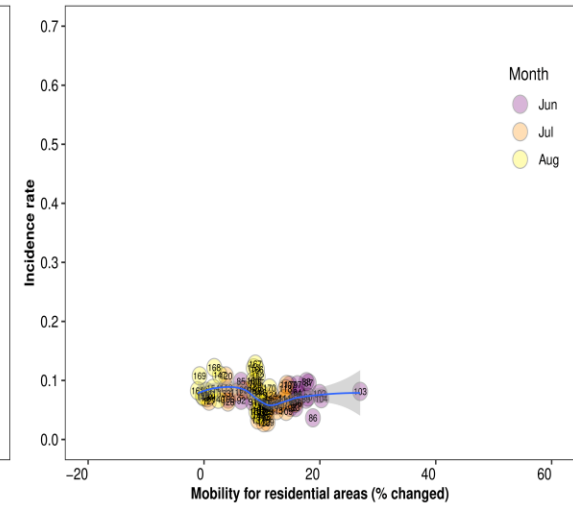
**Portugal**  
*(Residential areas – all period)*



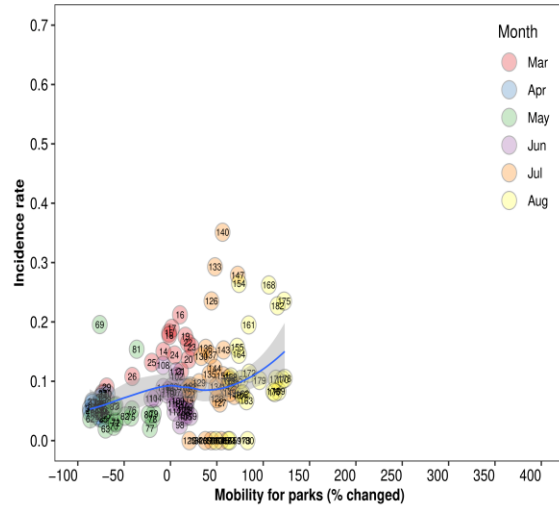
**Portugal**  
*(Residential areas – early phase)*



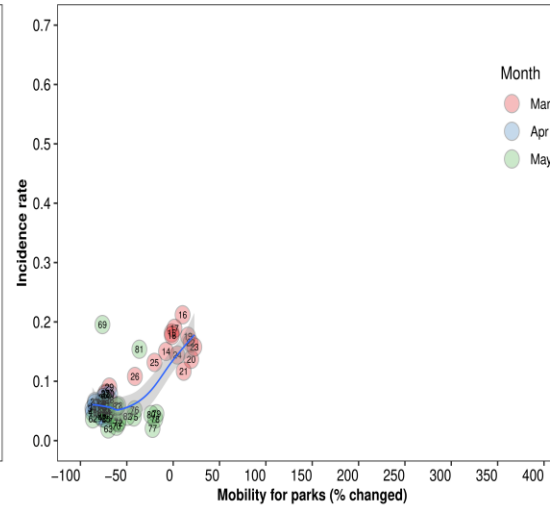
**Portugal**  
*(Residential areas – late phase)*



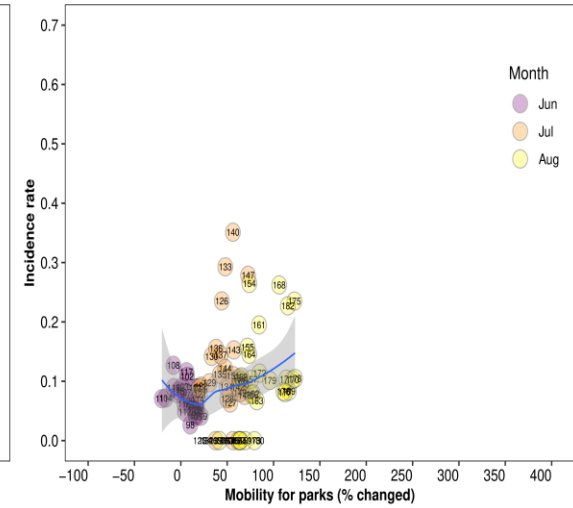
**Spain**  
*(Parks – all period)*



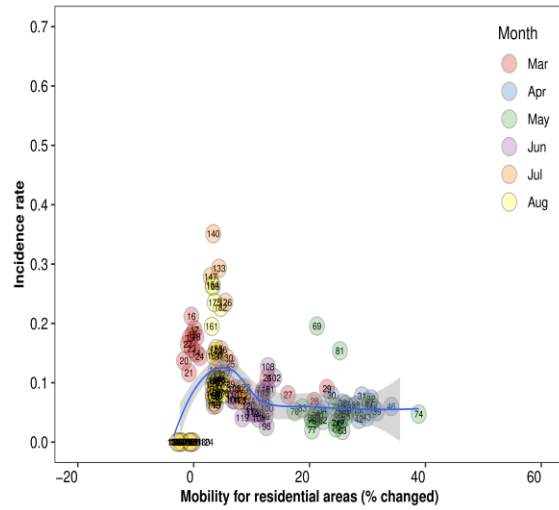
**Spain**  
*(Parks – early phase)*



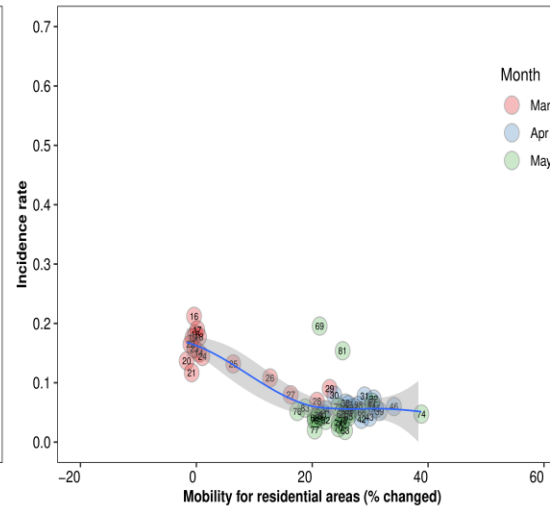
**Spain**  
*(Parks – late phase)*



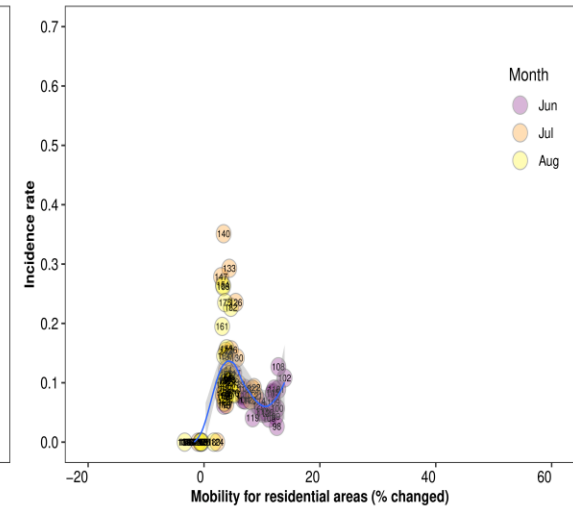
**Spain**  
*(Residential areas – all period)*



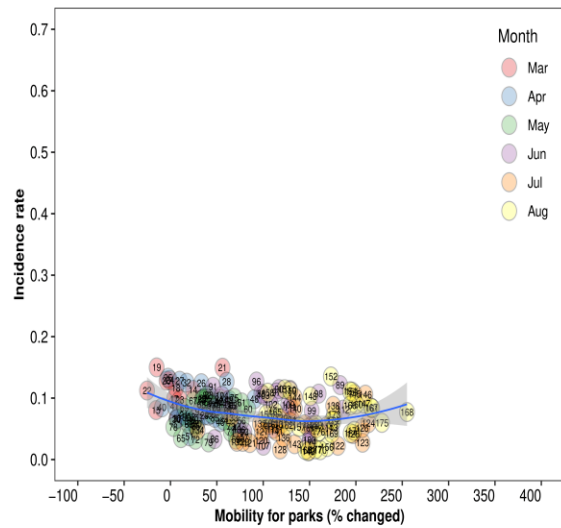
**Spain**  
*(Residential areas – early phase)*



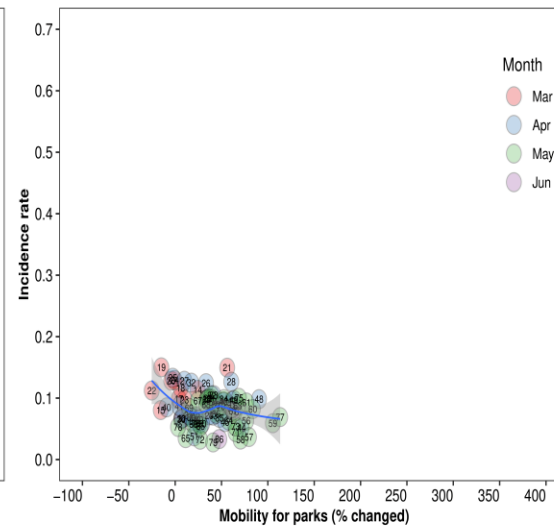
**Spain**  
*(Residential areas – late phase)*



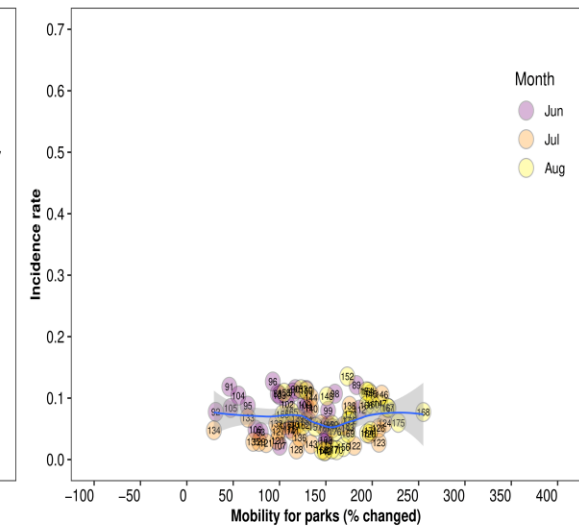
**Sweden**  
(Parks – all period)



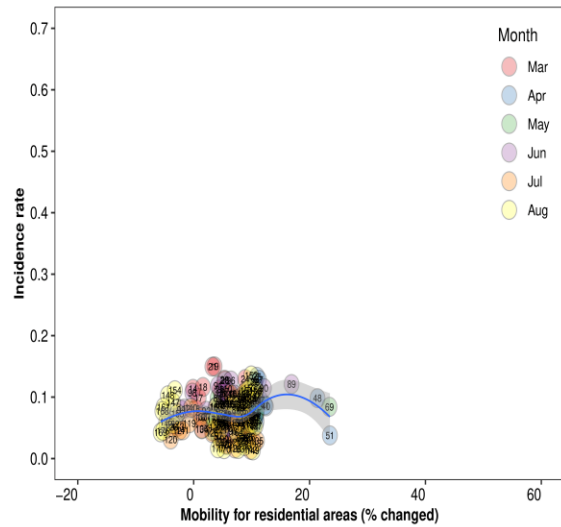
**Sweden**  
(Parks – early phase)



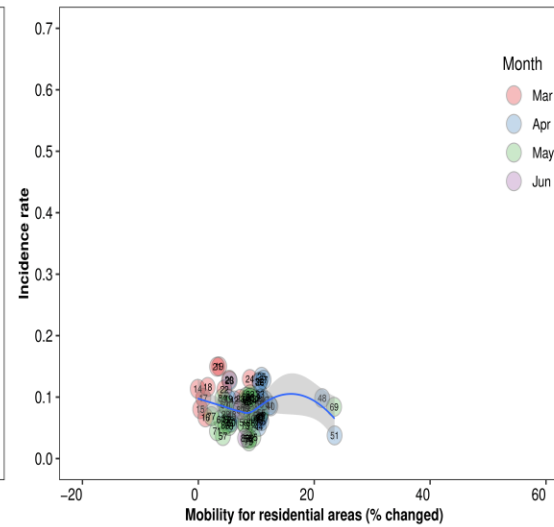
**Sweden**  
(Parks – late phase)



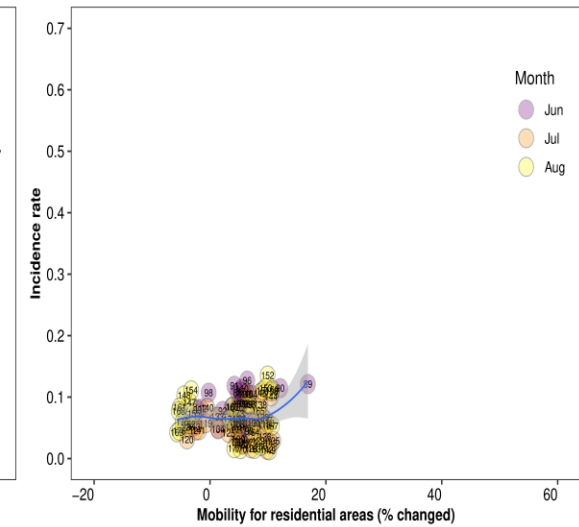
**Sweden**  
(Residential areas – all period)



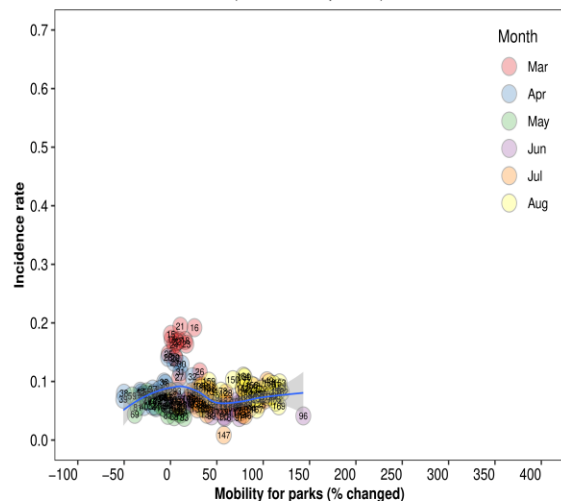
**Sweden**  
(Residential areas – early phase)



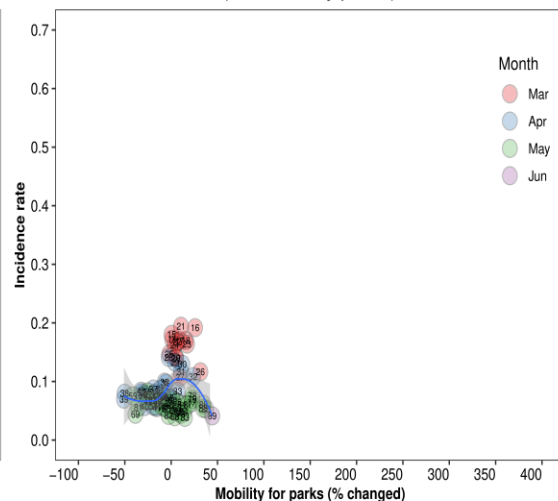
**Sweden**  
(Residential areas – late phase)



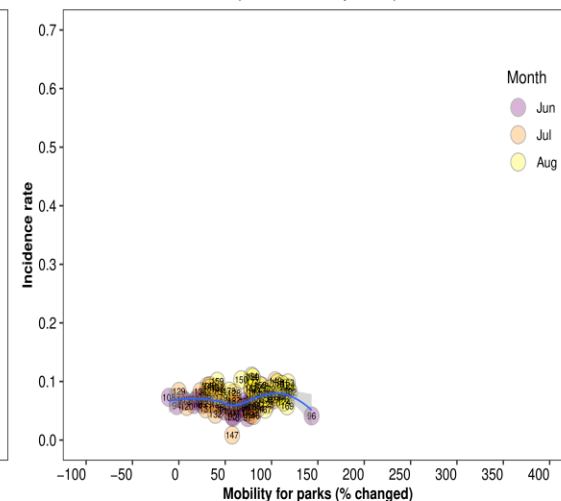
**United Kingdom**  
(Parks – all period)



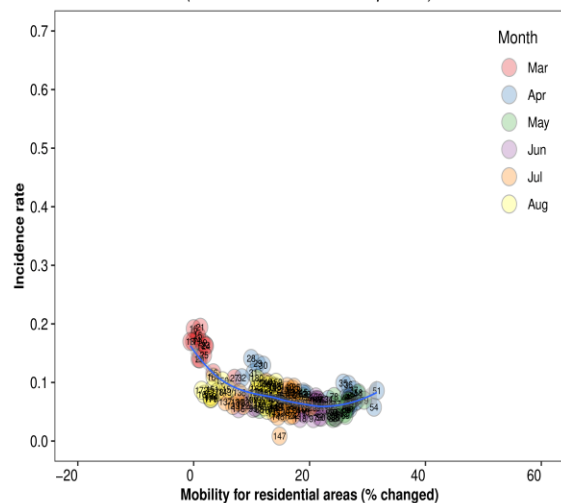
**United Kingdom**  
(Parks – early phase)



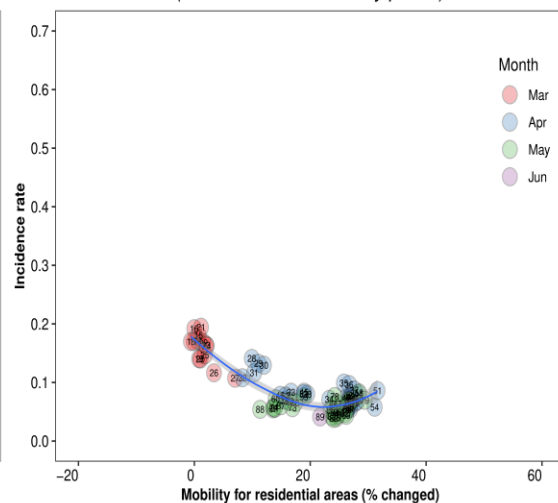
**United Kingdom**  
(Parks – late phase)



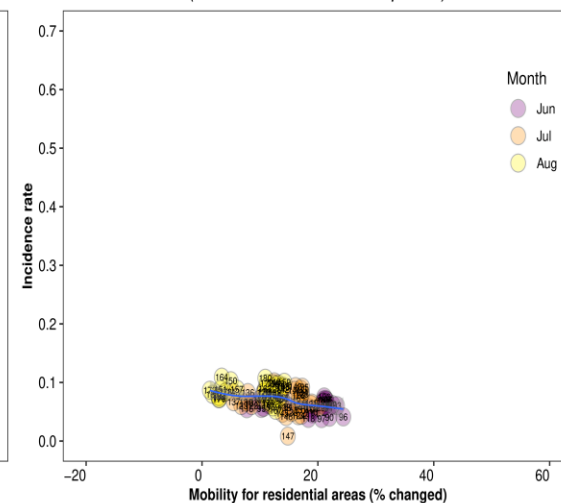
**United Kingdom**  
(Residential areas – all period)



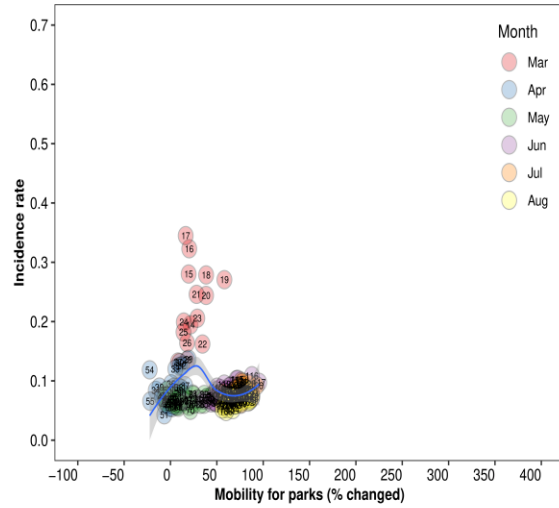
**United Kingdom**  
(Residential areas – early phase)



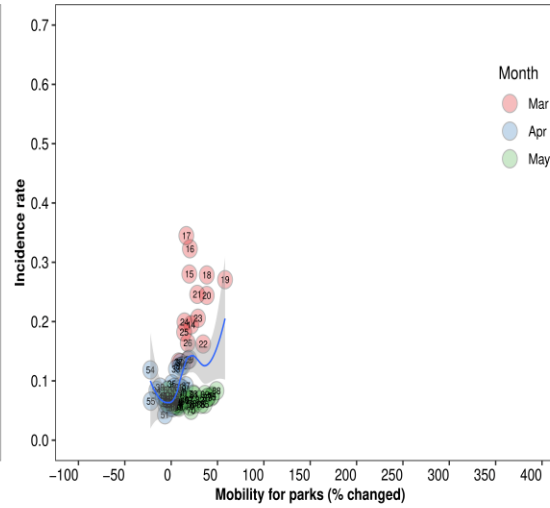
**United Kingdom**  
(Residential areas – late phase)



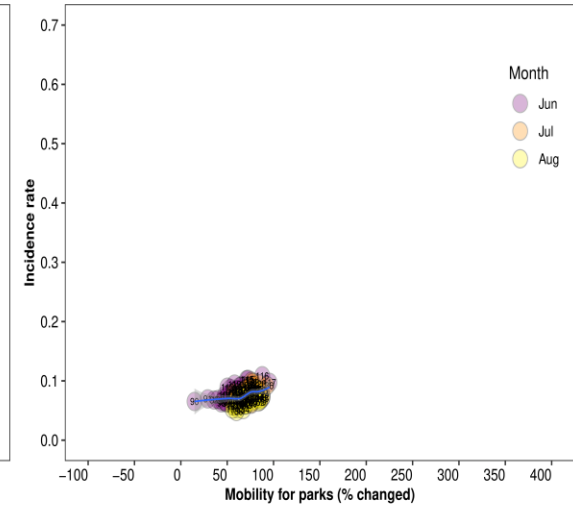
**United States**  
*(Parks – all period)*



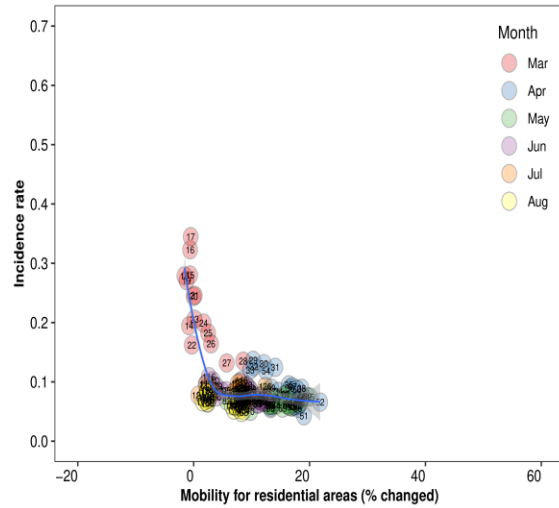
**United States**  
*(Parks – early phase)*



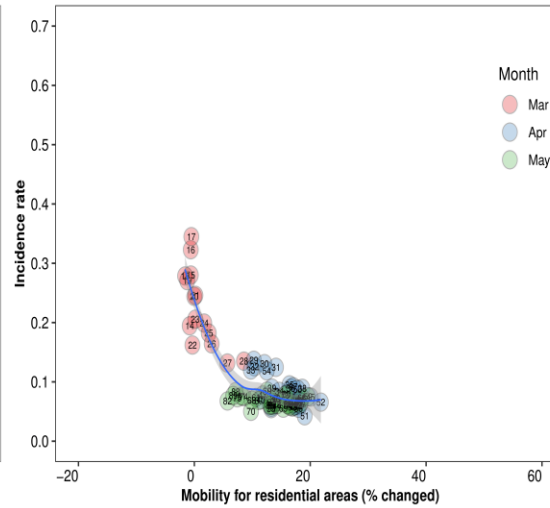
**United States**  
*(Parks – late phase)*



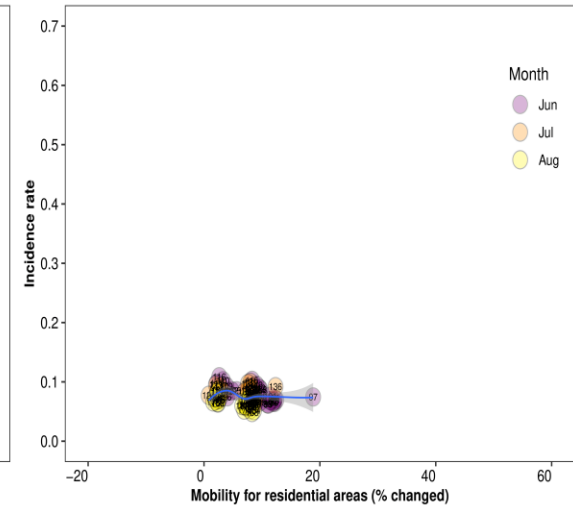
**United States**  
*(Residential areas – all period)*



**United States**  
*(Residential areas – early phase)*

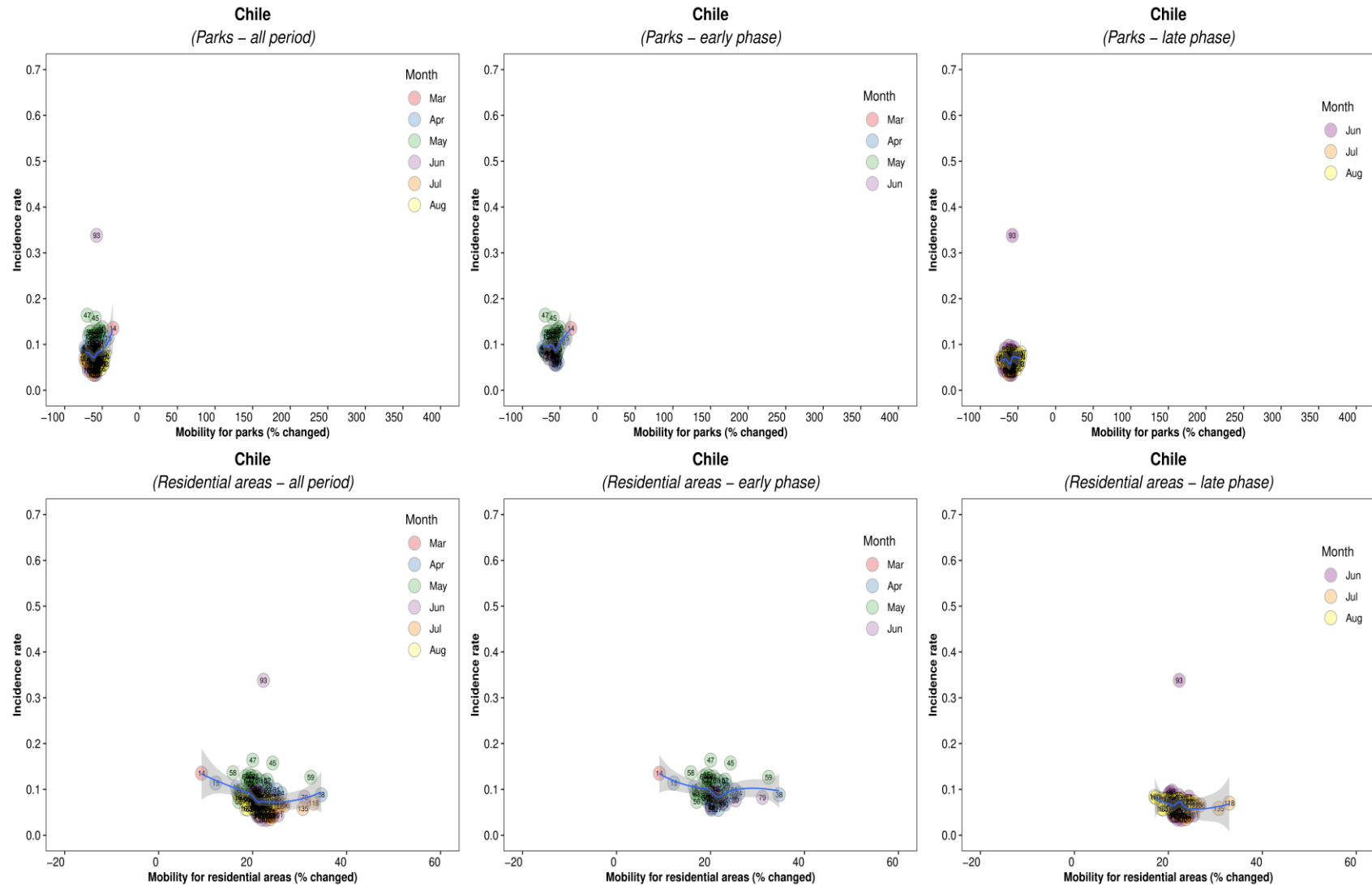


**United States**  
*(Residential areas – late phase)*

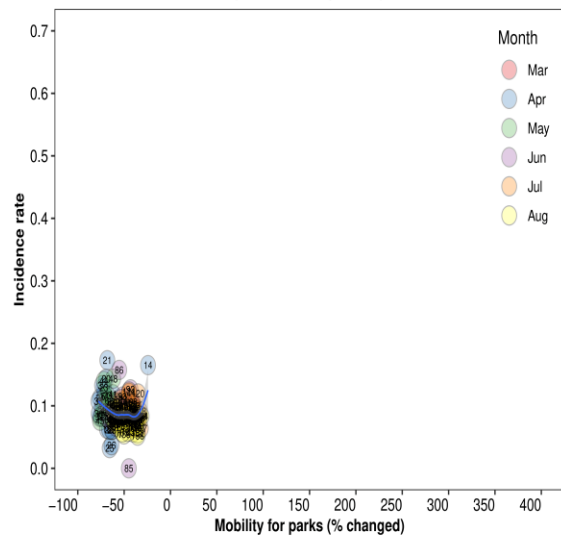




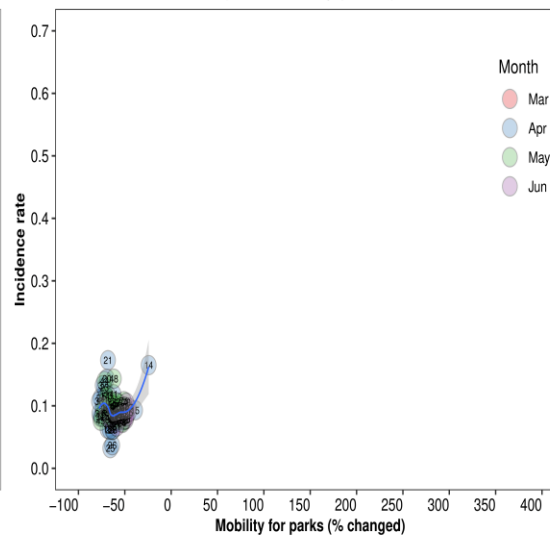
Supplementary Figure 2B. Association between new daily incidence rates of COVID-19 and mobility changes in 36 countries by early and late phase and other places (parks and residential areas) visited. Asia, Eastern Europe, Latin America, and Caribbean.



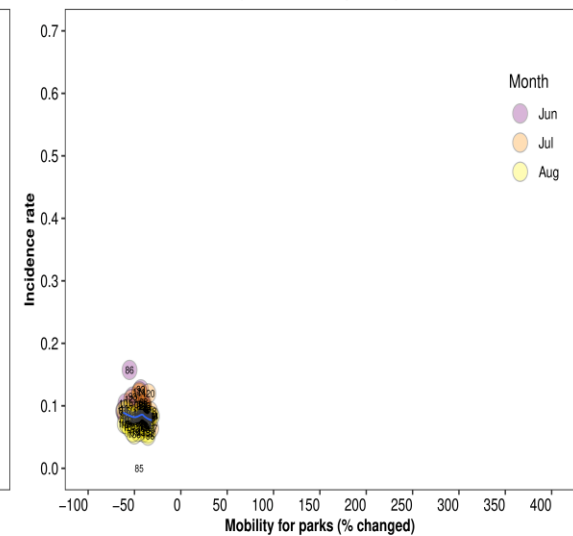
**Colombia**  
(Parks – all period)



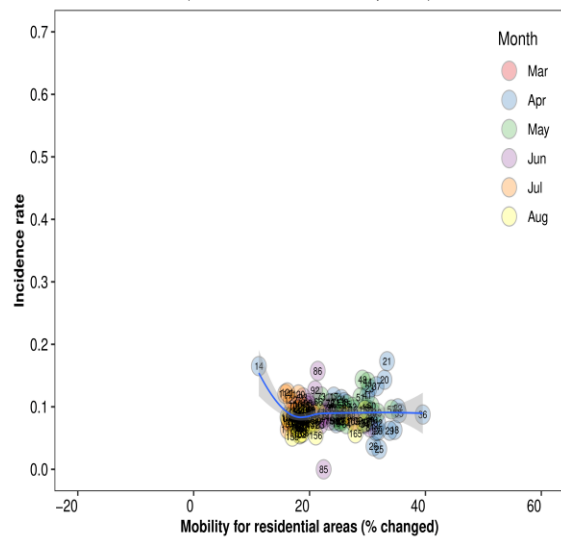
**Colombia**  
(Parks – early phase)



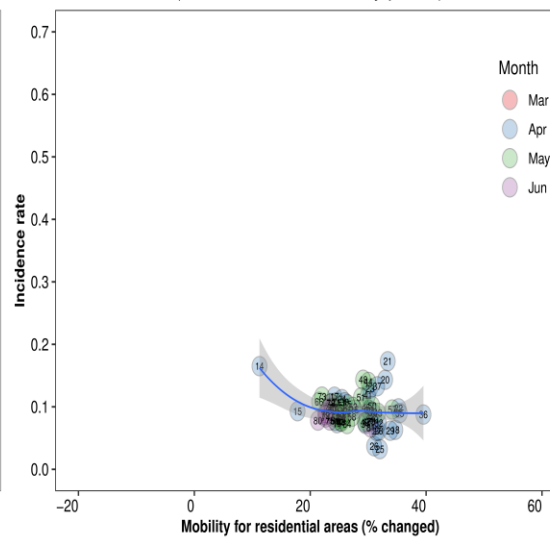
**Colombia**  
(Parks – late phase)



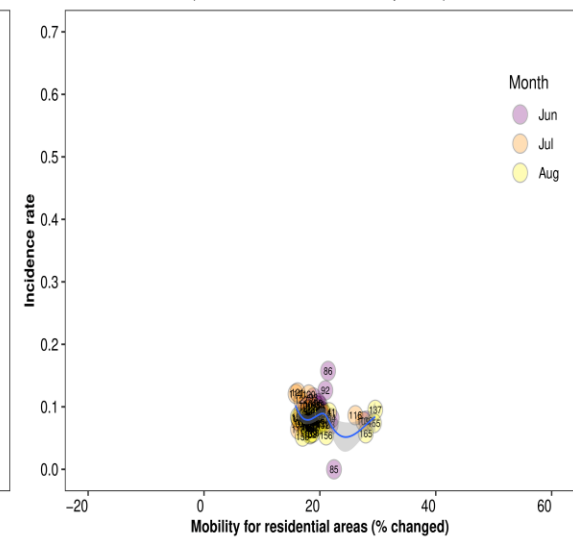
**Colombia**  
(Residential areas – all period)



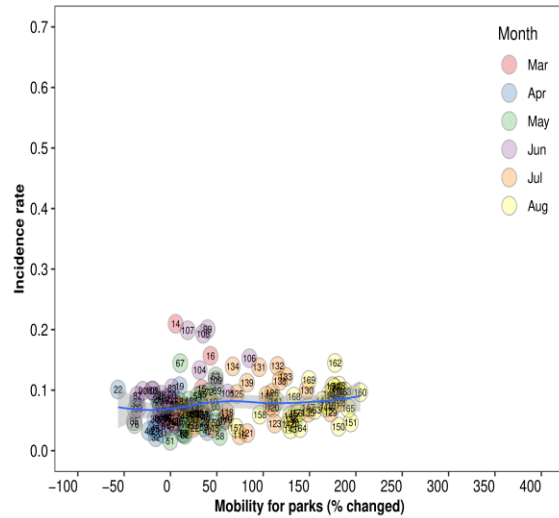
**Colombia**  
(Residential areas – early phase)



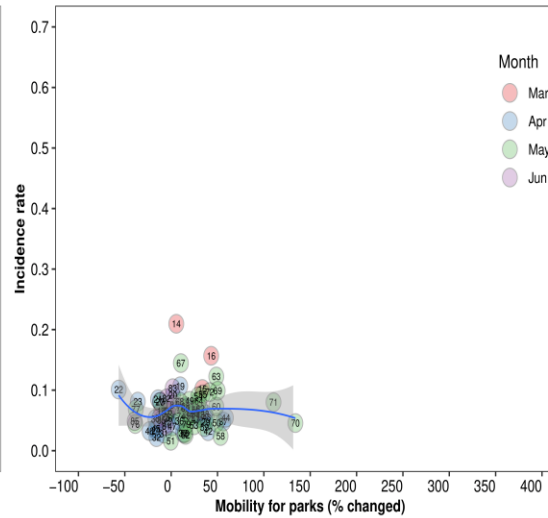
**Colombia**  
(Residential areas – late phase)



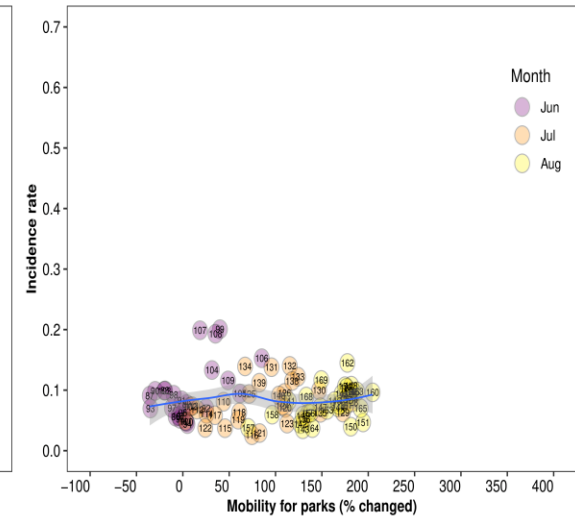
**Czech Republic**  
(Parks – all period)



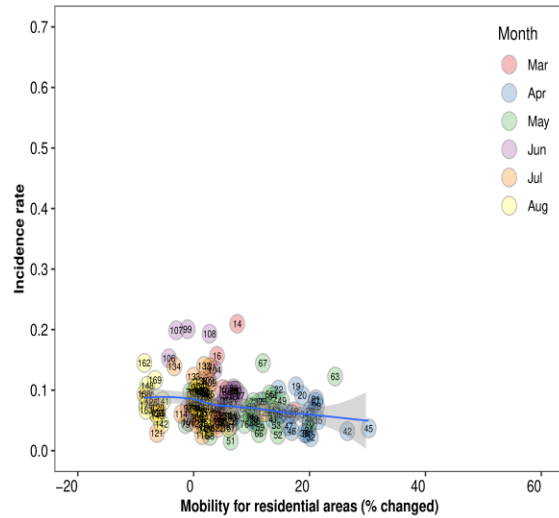
**Czech Republic**  
(Parks – early phase)



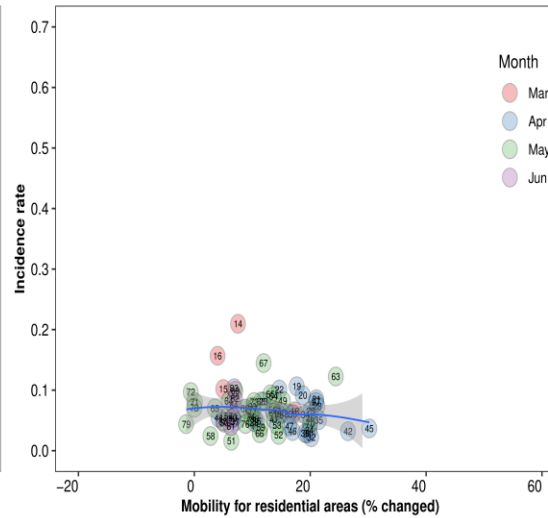
**Czech Republic**  
(Parks – late phase)



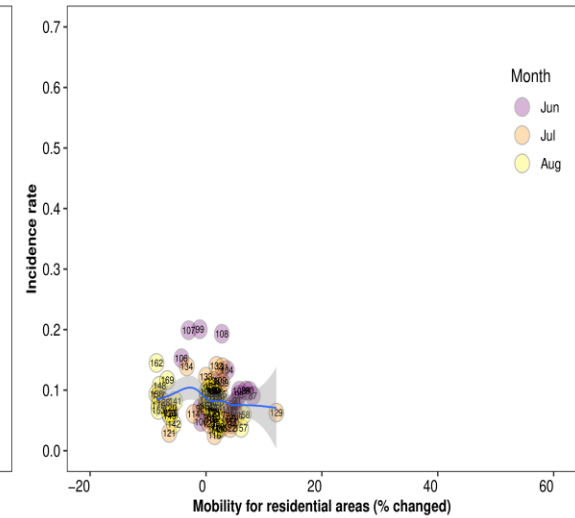
**Czech Republic**  
(Residential areas – all period)



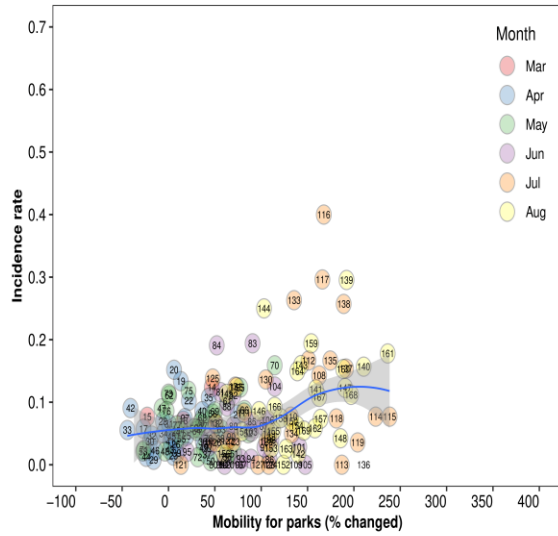
**Czech Republic**  
(Residential areas – early phase)



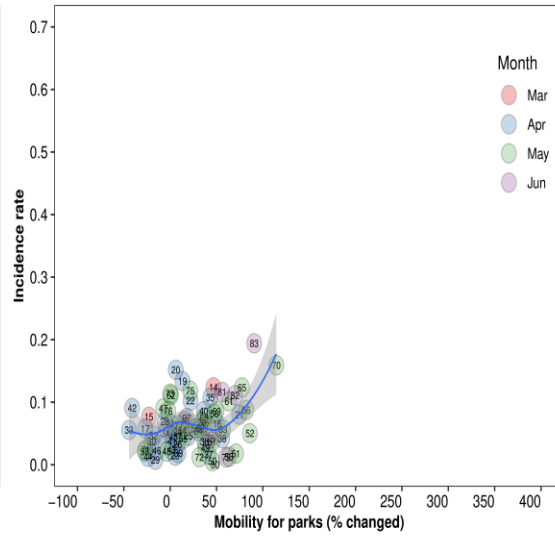
**Czech Republic**  
(Residential areas – late phase)



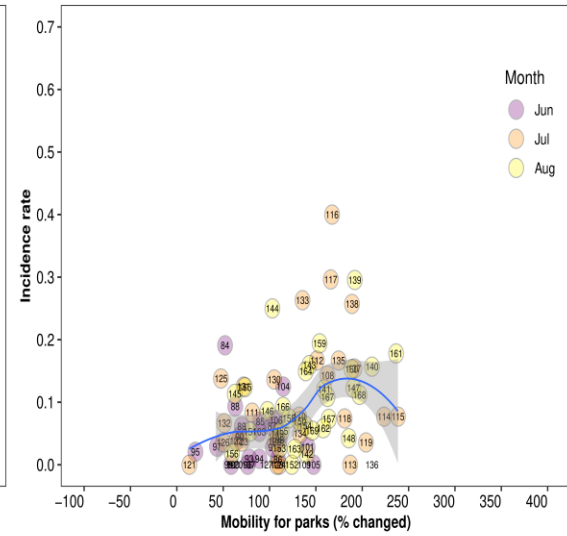
**Estonia**  
(Parks – all period)



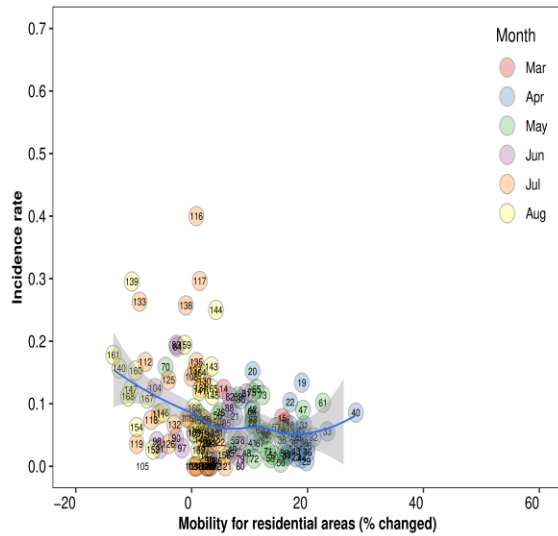
**Estonia**  
(Parks – early phase)



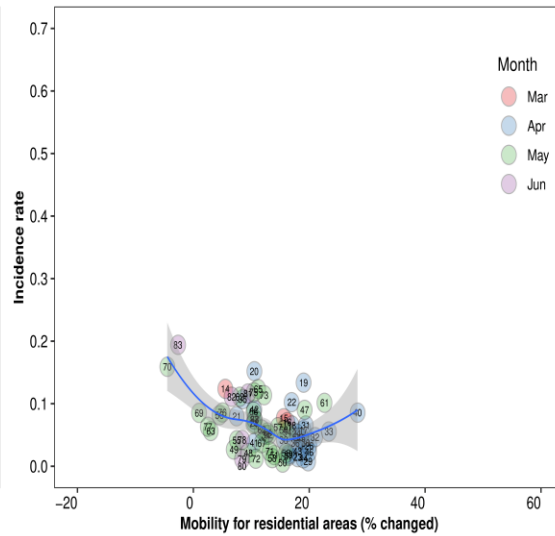
**Estonia**  
(Parks – late phase)



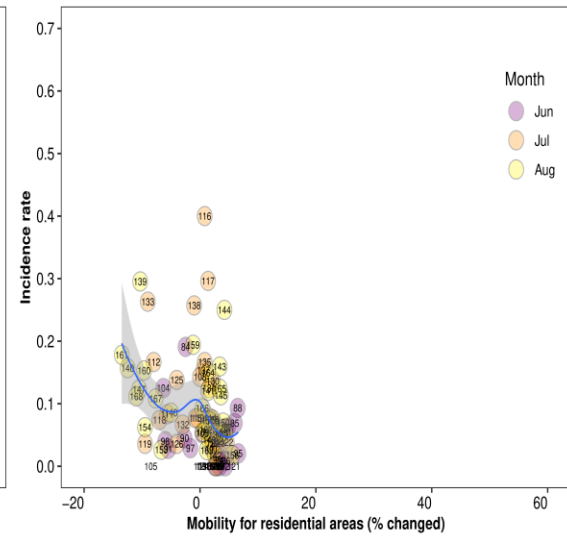
**Estonia**  
(Residential areas – all period)



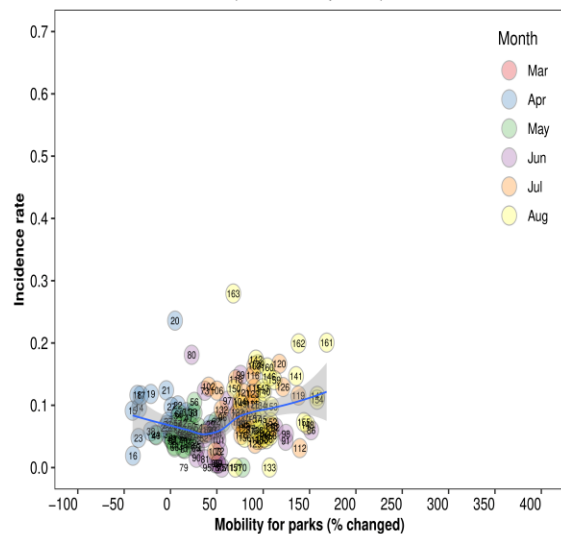
**Estonia**  
(Residential areas – early phase)



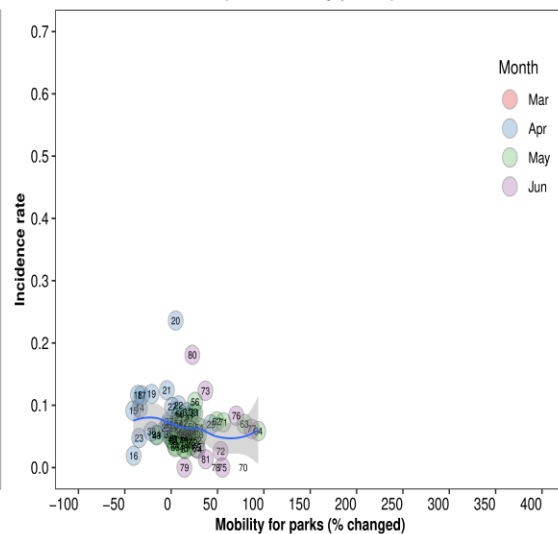
**Estonia**  
(Residential areas – late phase)



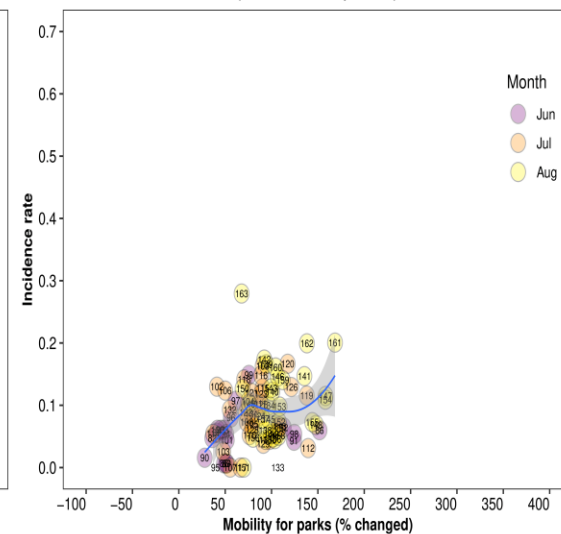
**Hungary**  
(Parks – all period)



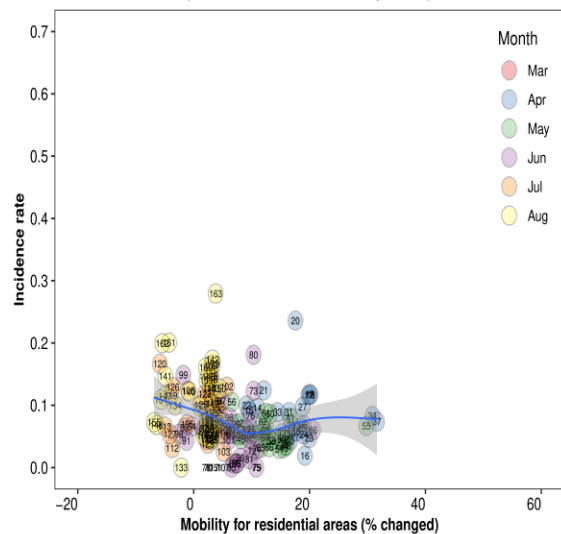
**Hungary**  
(Parks – early phase)



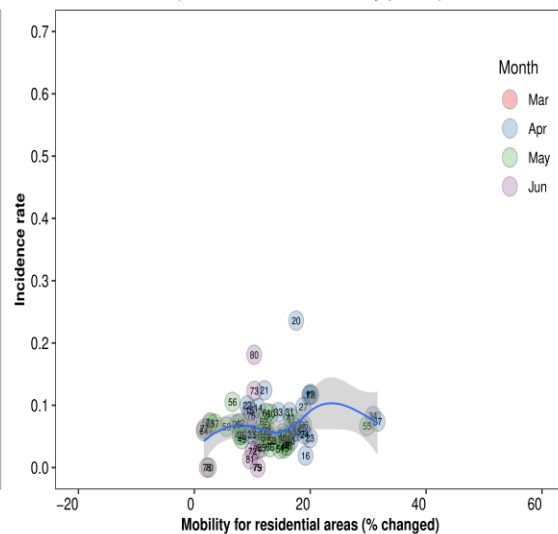
**Hungary**  
(Parks – late phase)



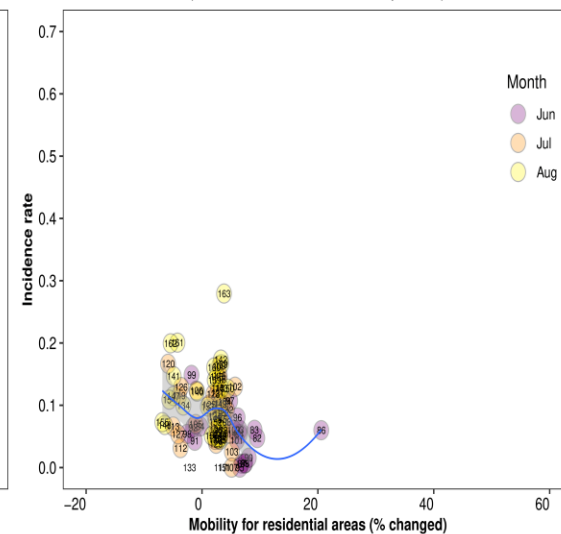
**Hungary**  
(Residential areas – all period)



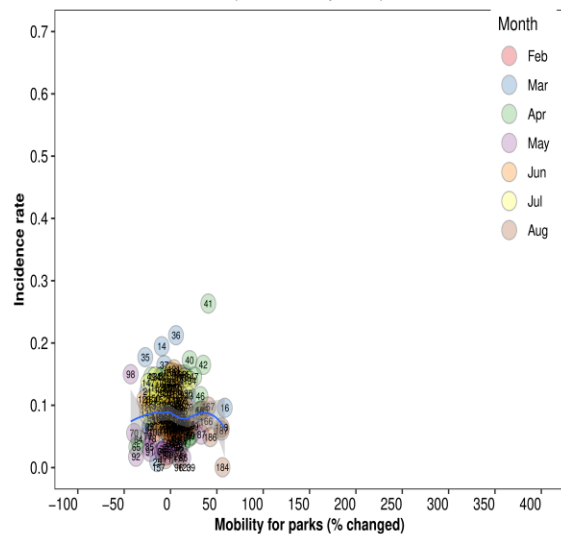
**Hungary**  
(Residential areas – early phase)



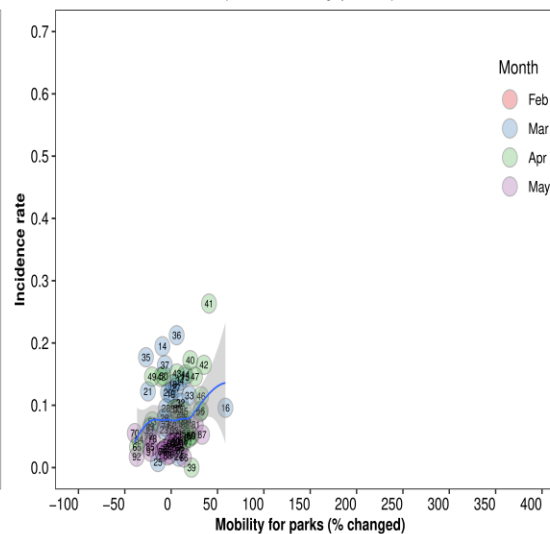
**Hungary**  
(Residential areas – late phase)



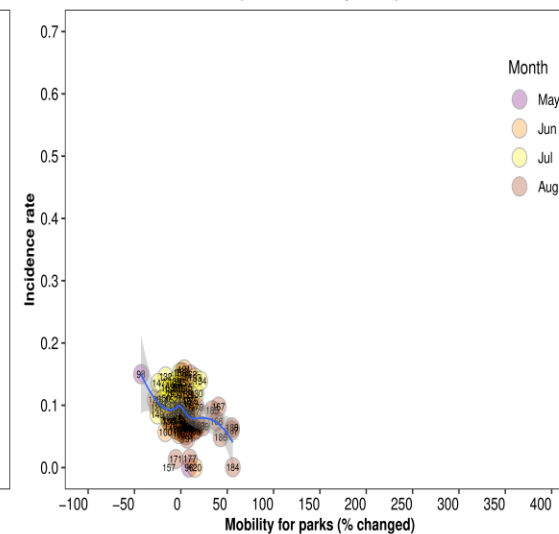
**Japan**  
(Parks – all period)



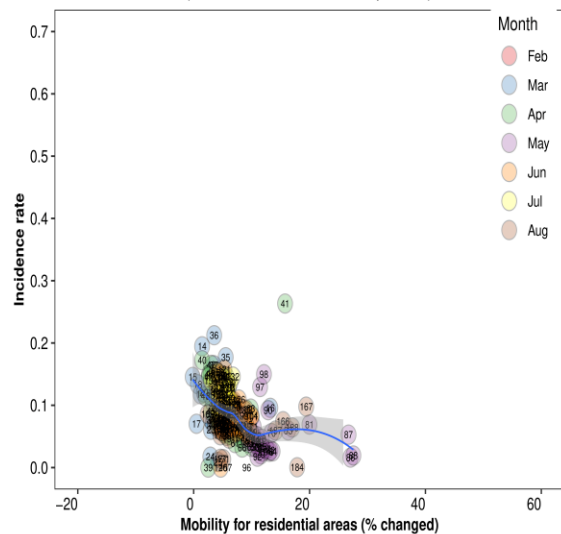
**Japan**  
(Parks – early phase)



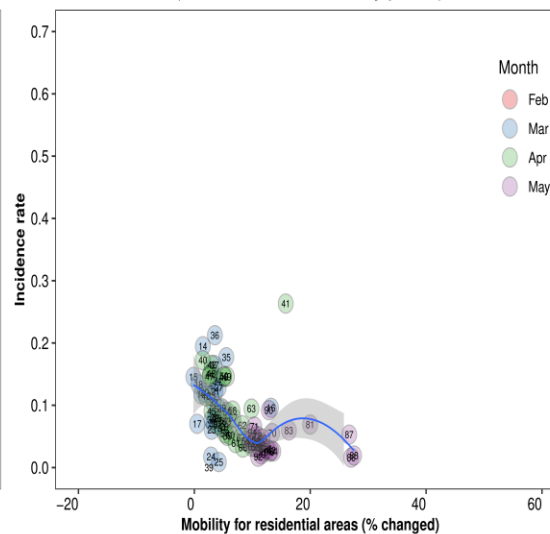
**Japan**  
(Parks – late phase)



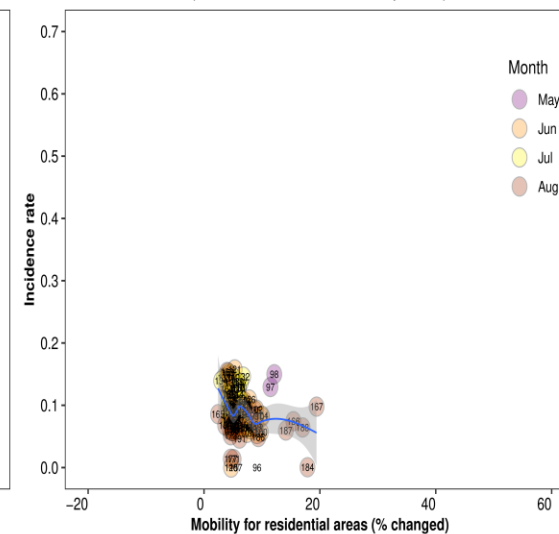
**Japan**  
(Residential areas – all period)



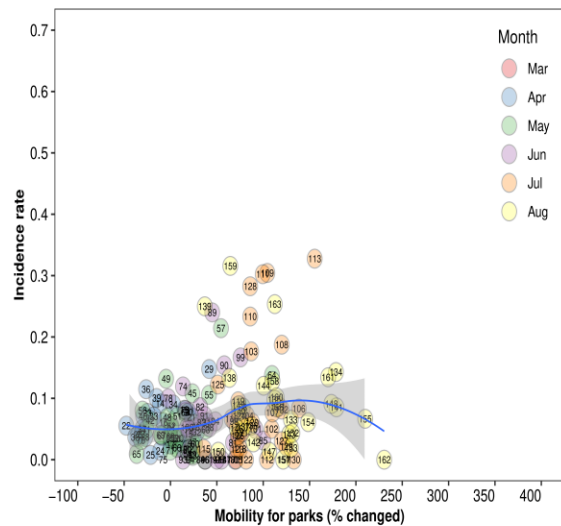
**Japan**  
(Residential areas – early phase)



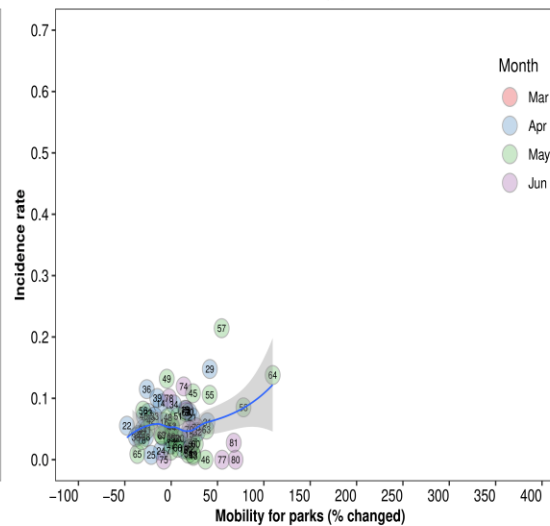
**Japan**  
(Residential areas – late phase)



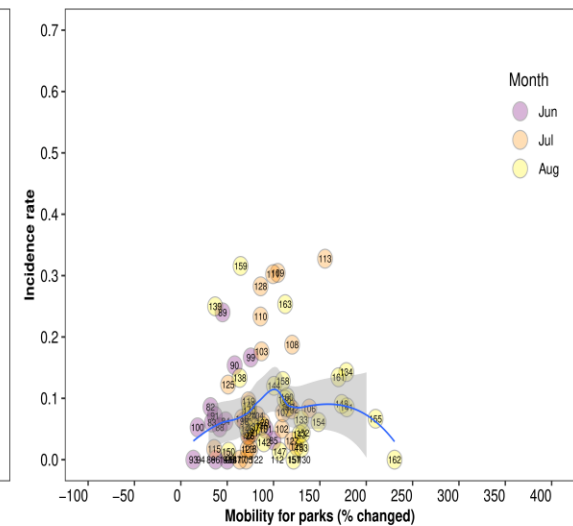
Latvia  
(Parks – all period)



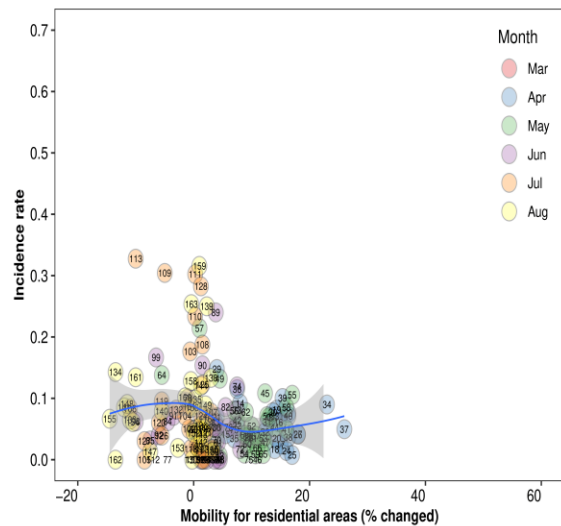
Latvia  
(Parks – early phase)



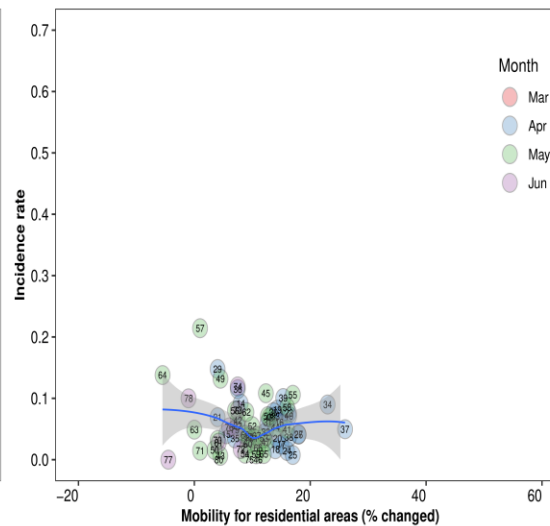
Latvia  
(Parks – late phase)



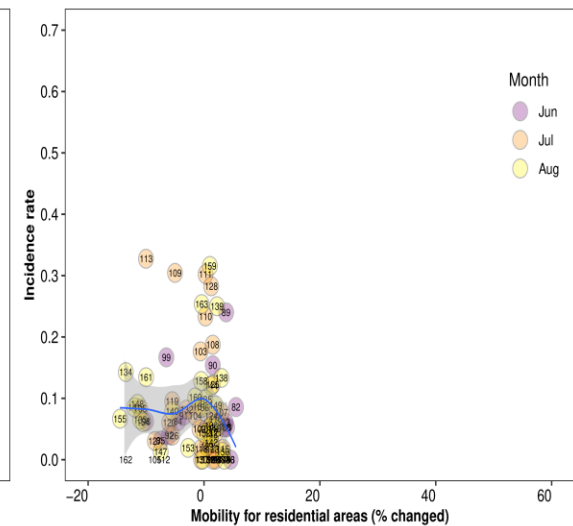
Latvia  
(Residential areas – all period)



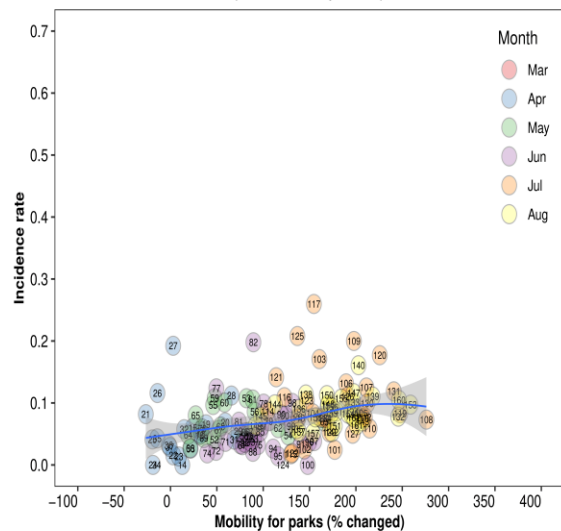
Latvia  
(Residential areas – early phase)



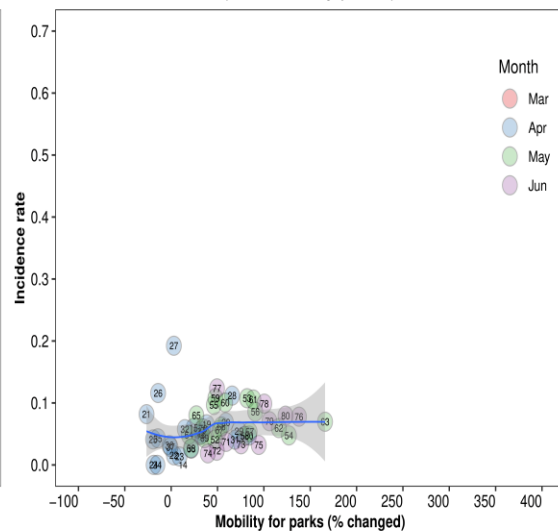
Latvia  
(Residential areas – late phase)



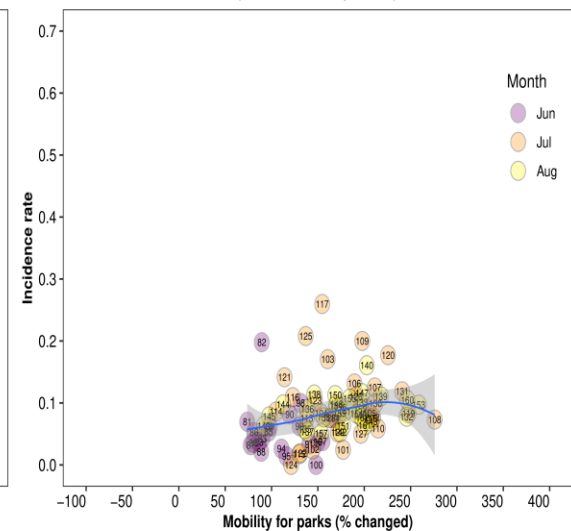
**Lithuania**  
(Parks – all period)



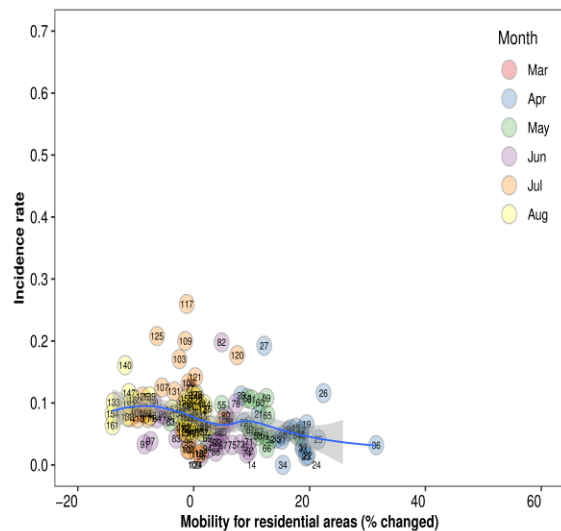
**Lithuania**  
(Parks – early phase)



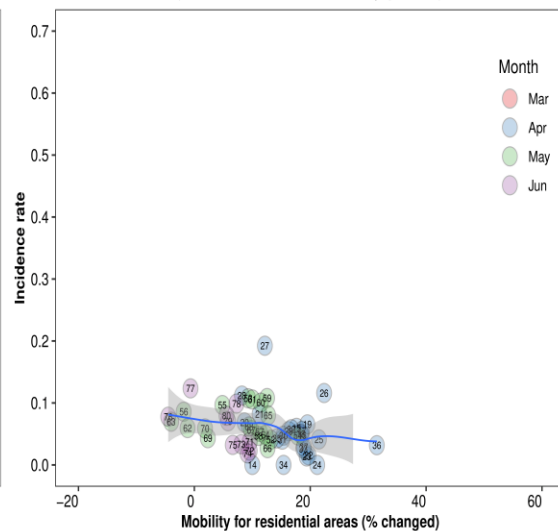
**Lithuania**  
(Parks – late phase)



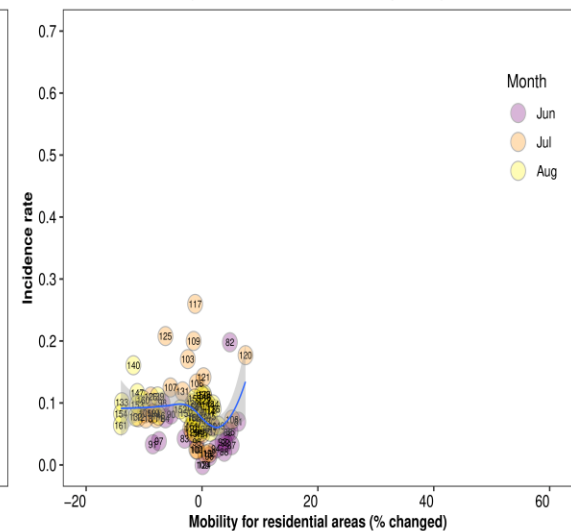
**Lithuania**  
(Residential areas – all period)



**Lithuania**  
(Residential areas – early phase)

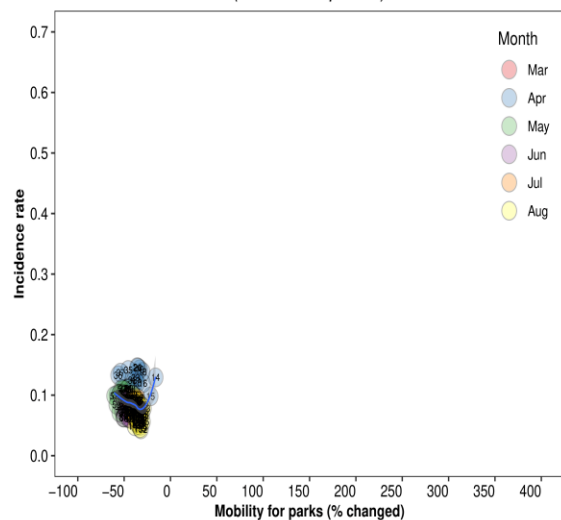


**Lithuania**  
(Residential areas – late phase)

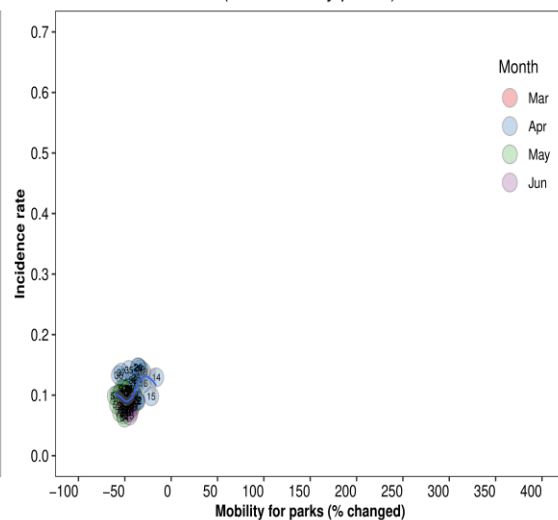




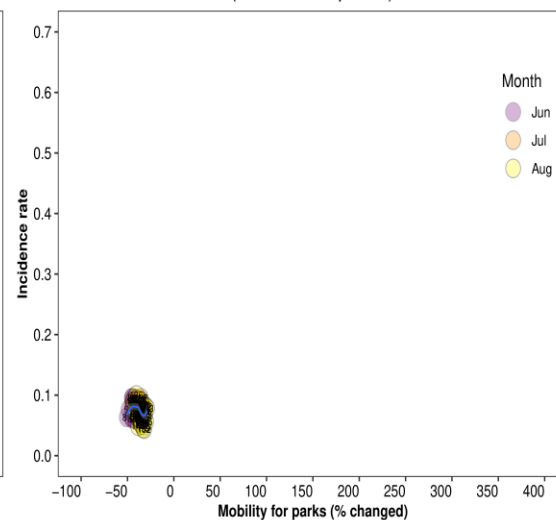
**Mexico**  
(Parks – all period)



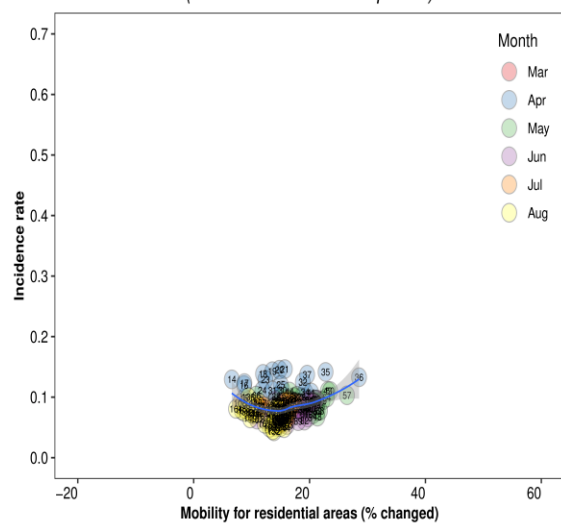
**Mexico**  
(Parks – early phase)



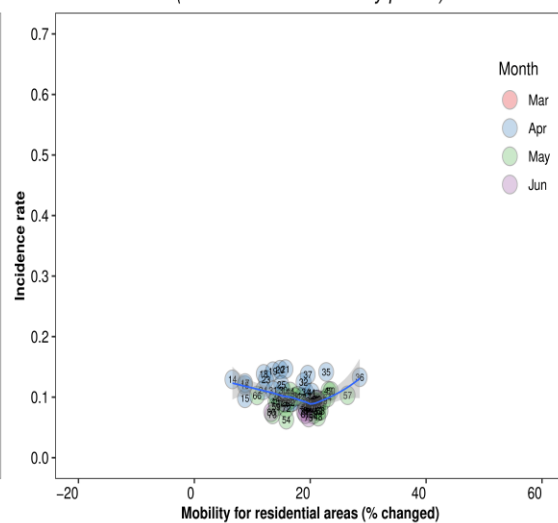
**Mexico**  
(Parks – late phase)



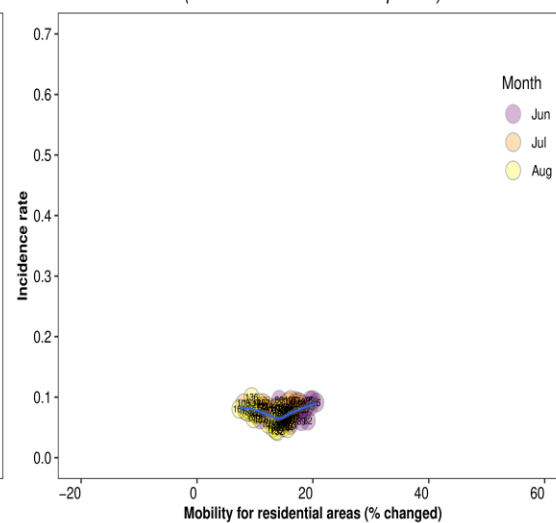
**Mexico**  
(Residential areas – all period)



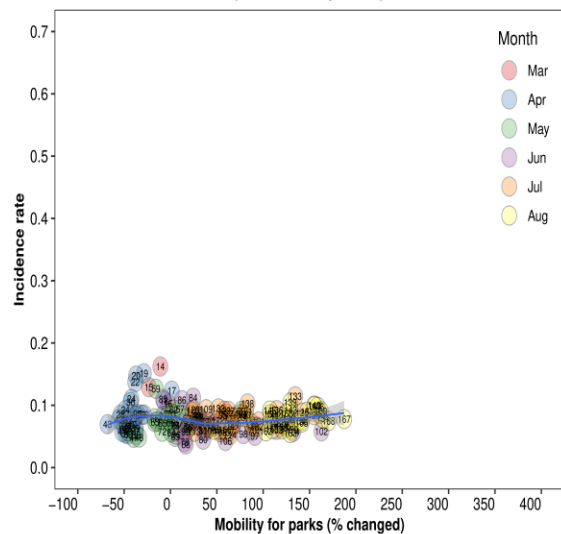
**Mexico**  
(Residential areas – early phase)



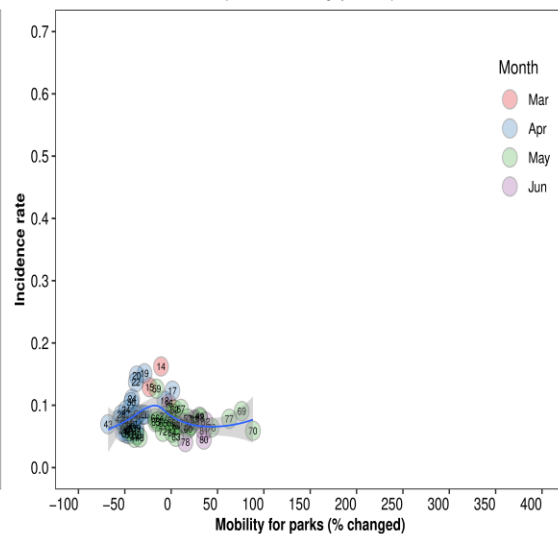
**Mexico**  
(Residential areas – late phase)



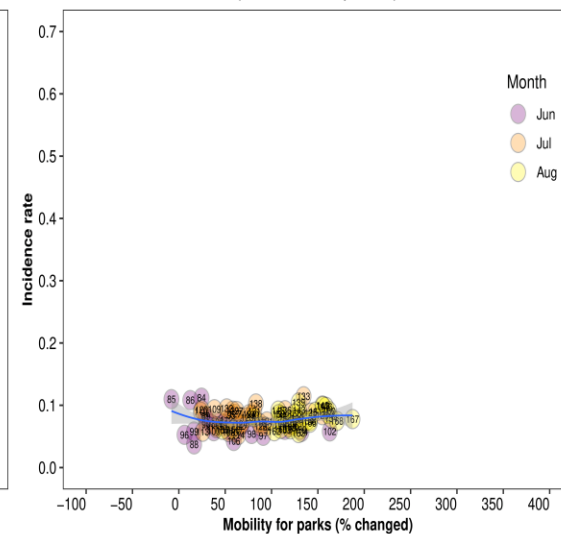
**Poland**  
(Parks – all period)



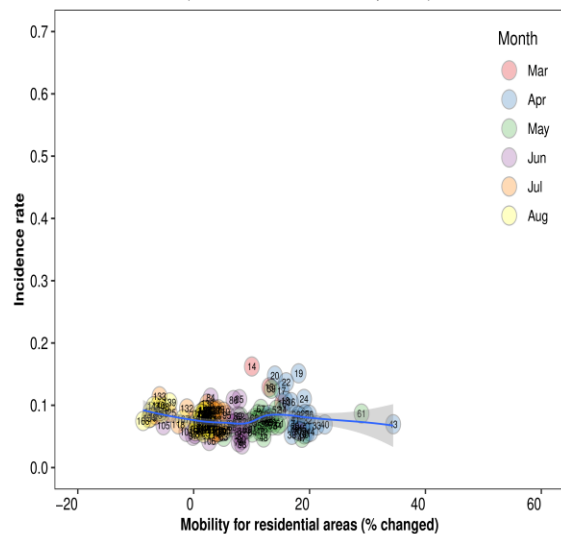
**Poland**  
(Parks – early phase)



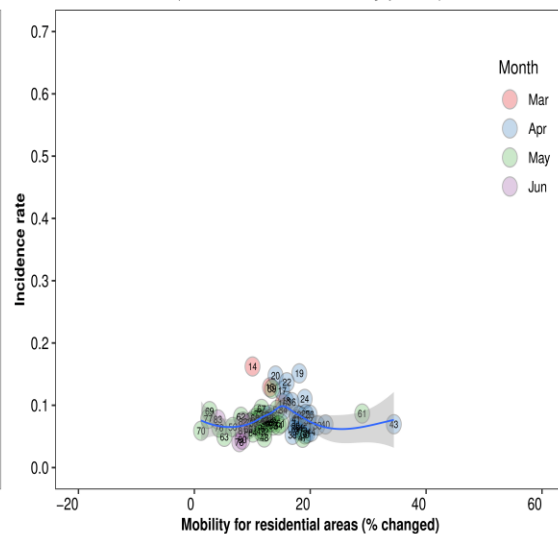
**Poland**  
(Parks – late phase)



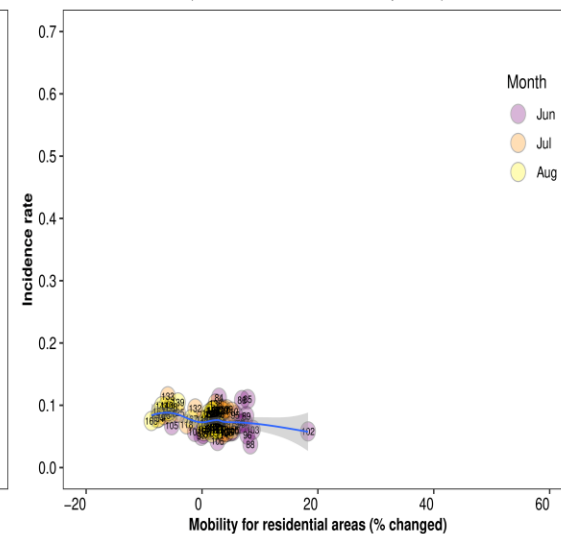
**Poland**  
(Residential areas – all period)



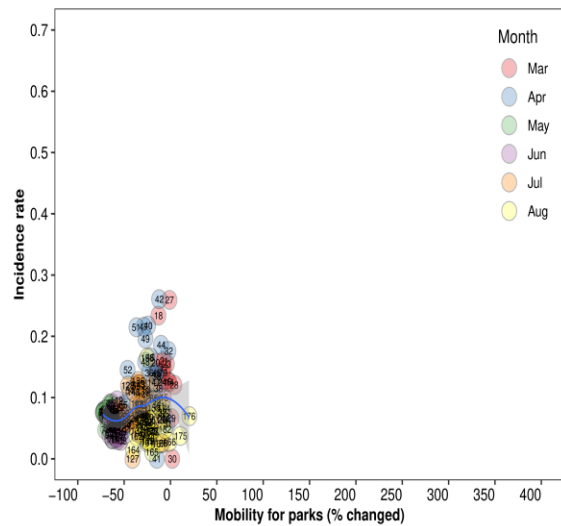
**Poland**  
(Residential areas – early phase)



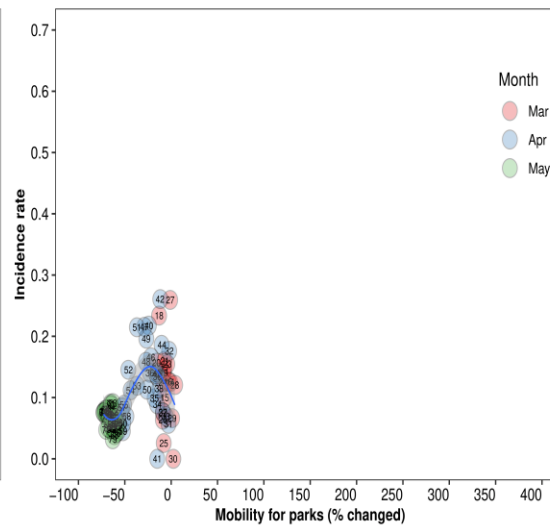
**Poland**  
(Residential areas – late phase)



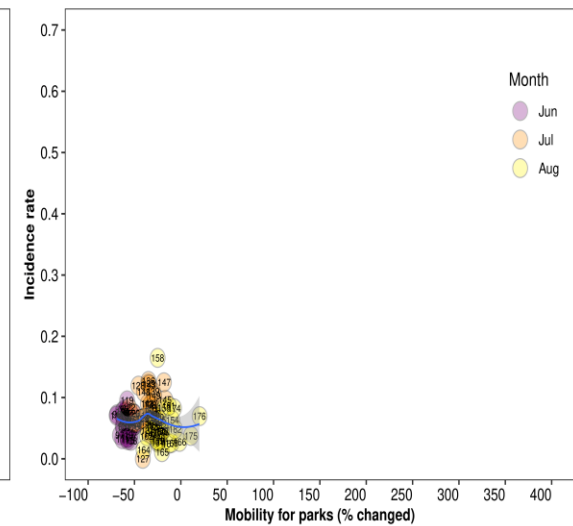
**Singapore**  
(Parks – all period)



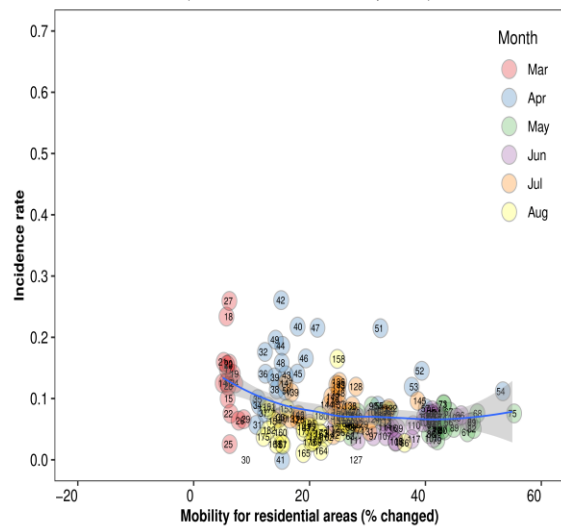
**Singapore**  
(Parks – early phase)



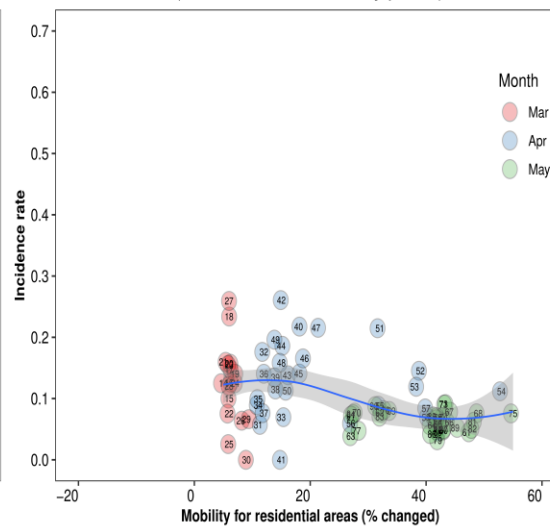
**Singapore**  
(Parks – late phase)



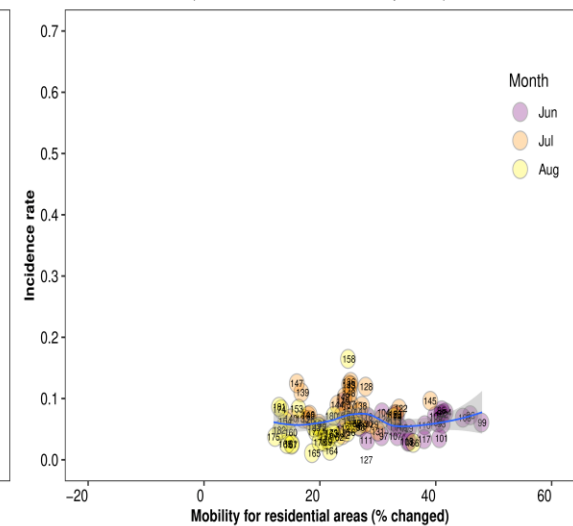
**Singapore**  
(Residential areas – all period)



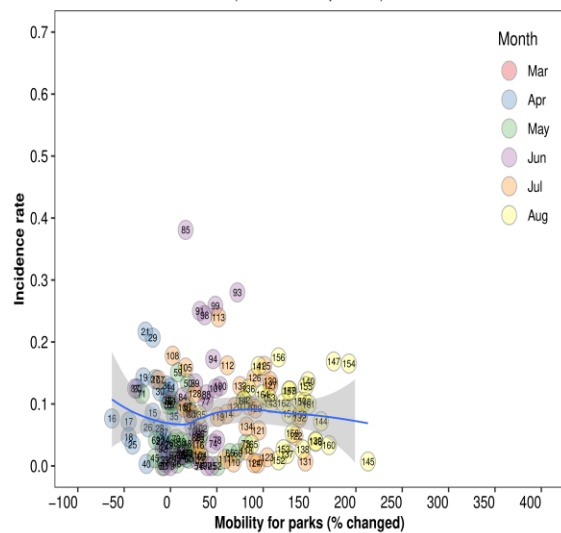
**Singapore**  
(Residential areas – early phase)



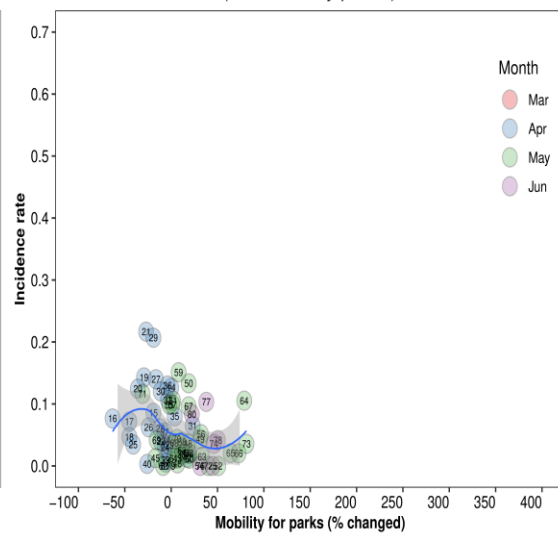
**Singapore**  
(Residential areas – late phase)



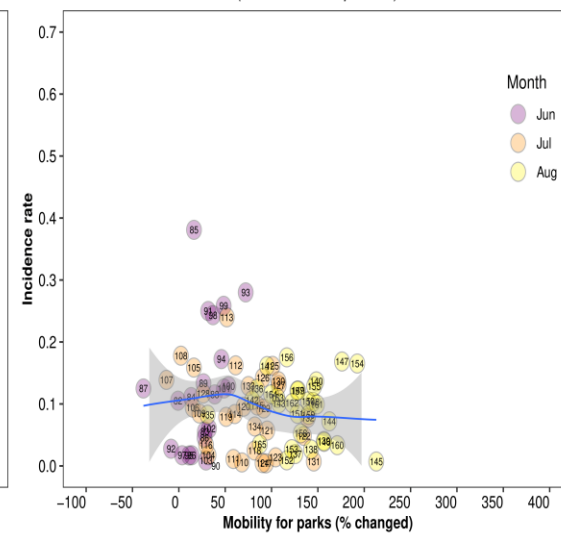
**Slovakia**  
(Parks – all period)



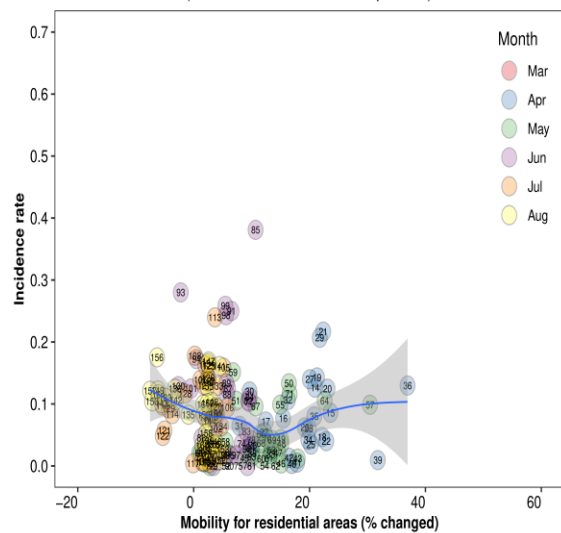
**Slovakia**  
(Parks – early phase)



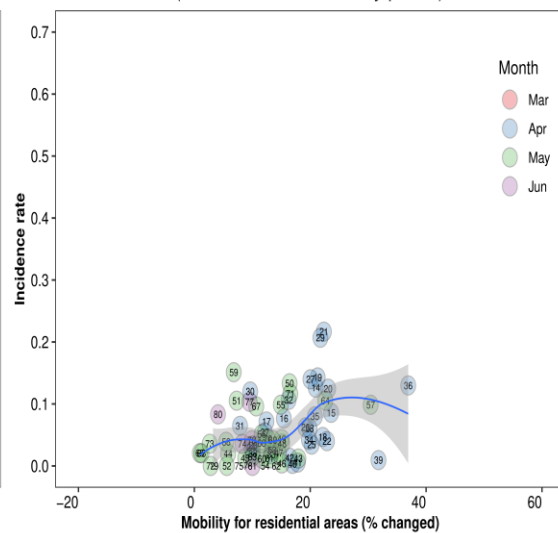
**Slovakia**  
(Parks – late phase)



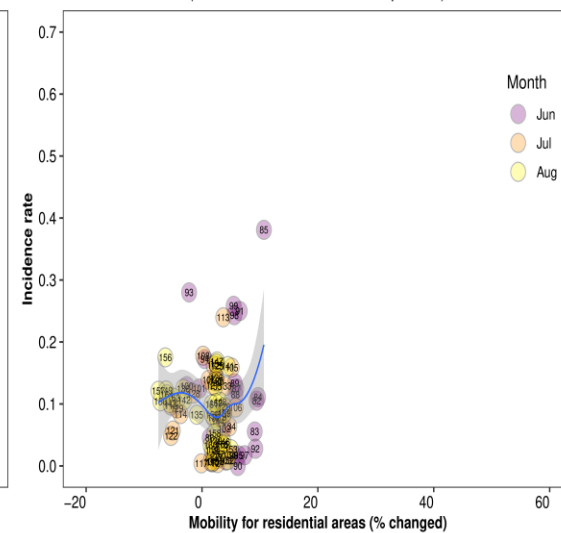
**Slovakia**  
(Residential areas – all period)



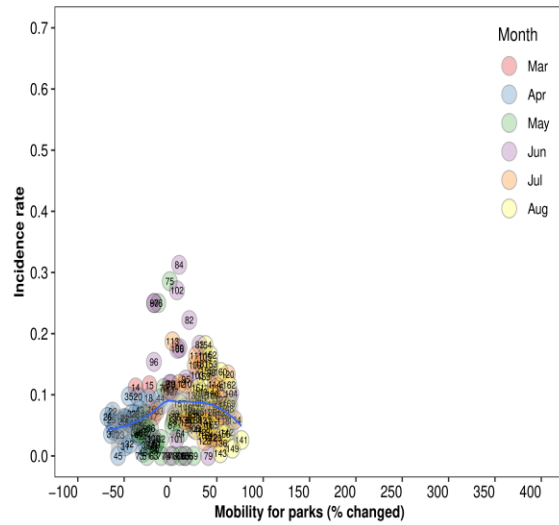
**Slovakia**  
(Residential areas – early phase)



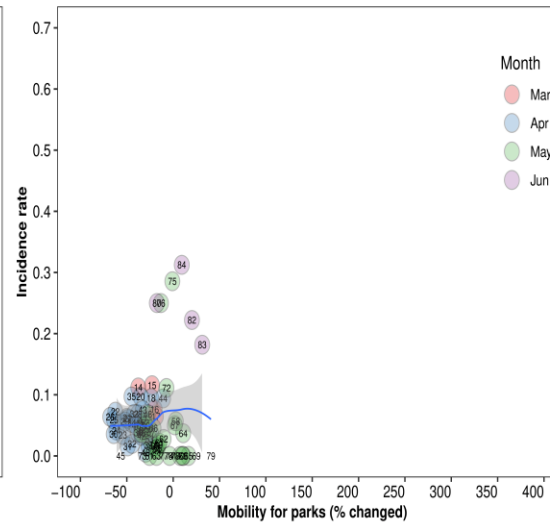
**Slovakia**  
(Residential areas – late phase)



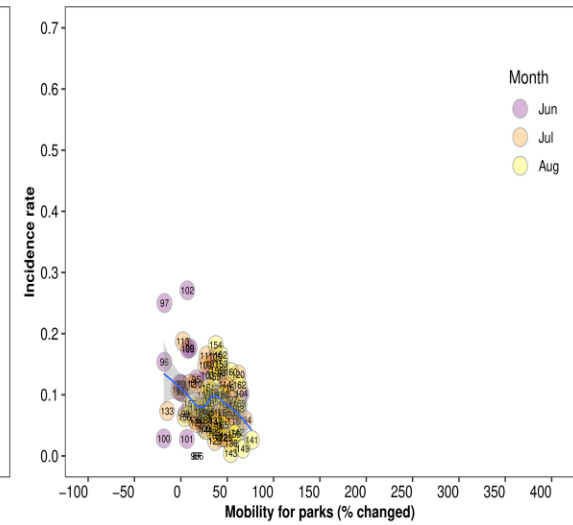
**Slovenia**  
(Parks – all period)



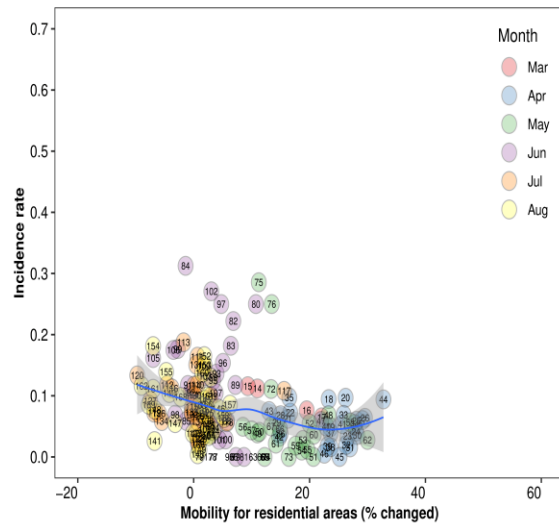
**Slovenia**  
(Parks – early phase)



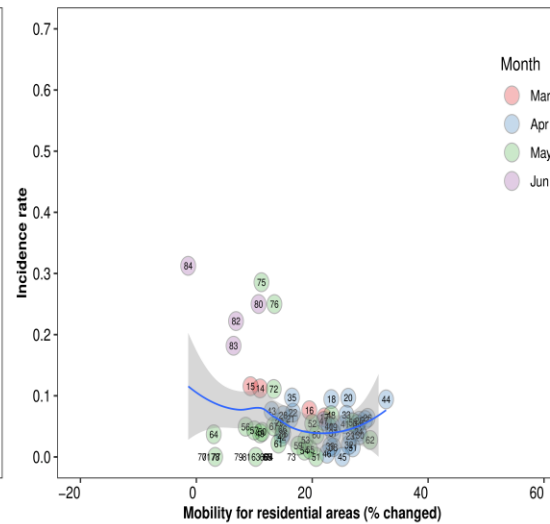
**Slovenia**  
(Parks – late phase)



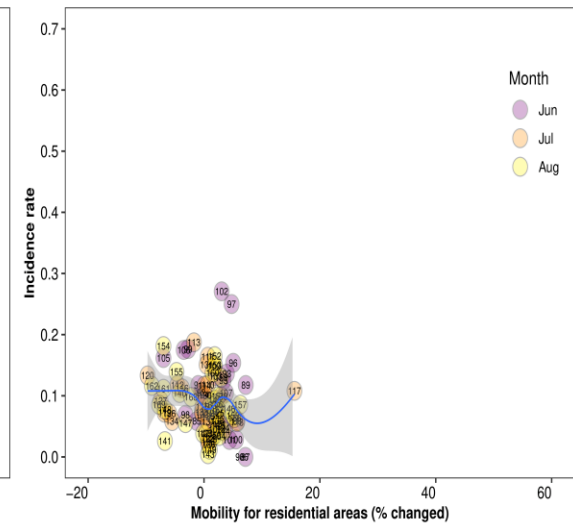
**Slovenia**  
(Residential areas – all period)



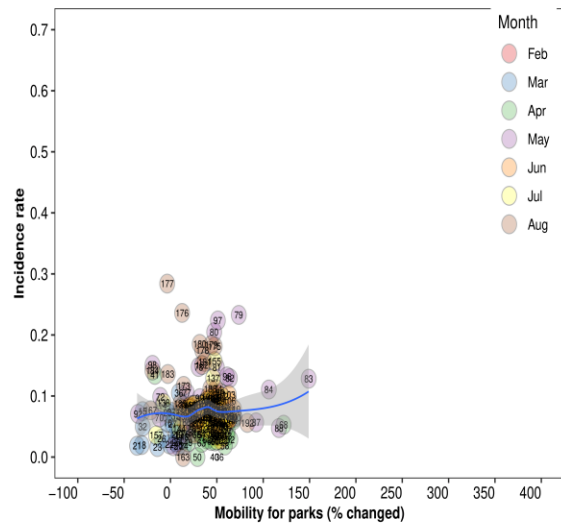
**Slovenia**  
(Residential areas – early phase)



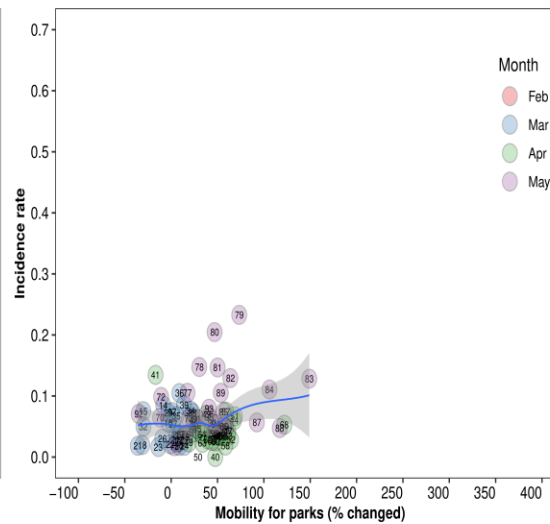
**Slovenia**  
(Residential areas – late phase)



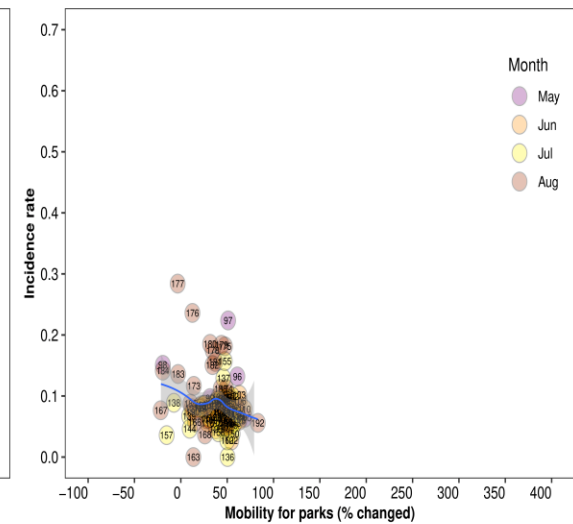
**South Korea**  
(Parks – all period)



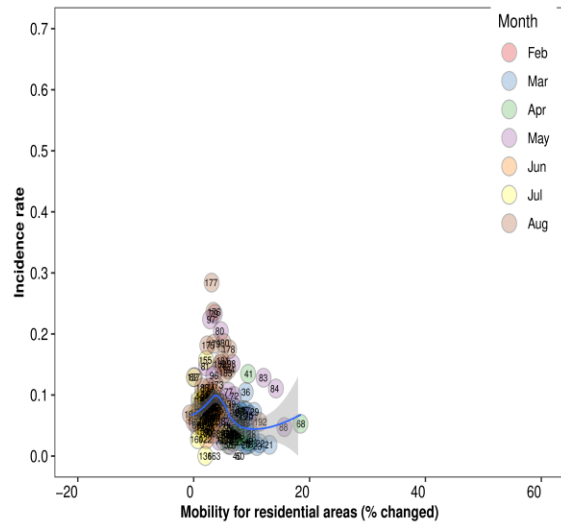
**South Korea**  
(Parks – early phase)



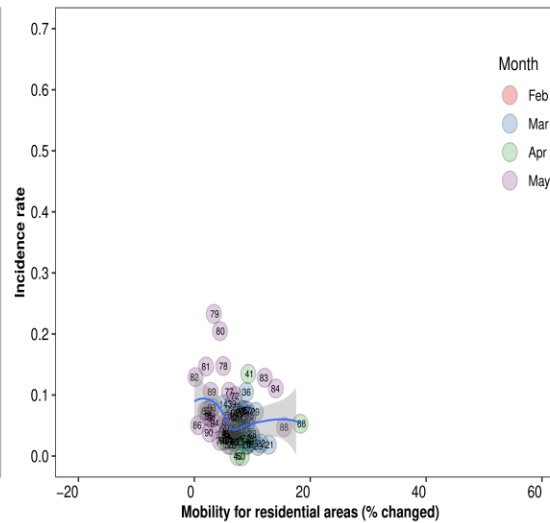
**South Korea**  
(Parks – late phase)



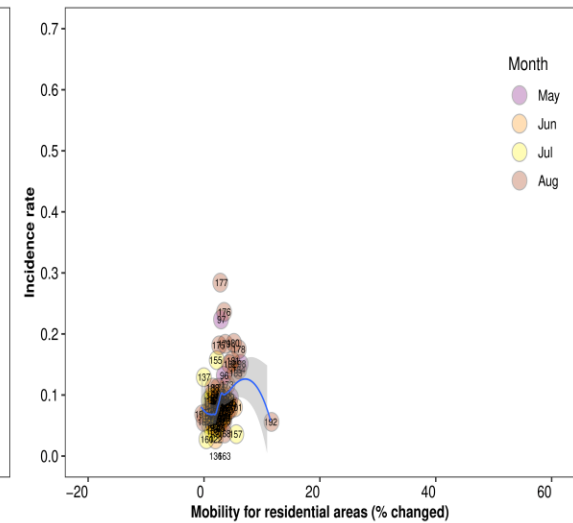
**South Korea**  
(Residential areas – all period)

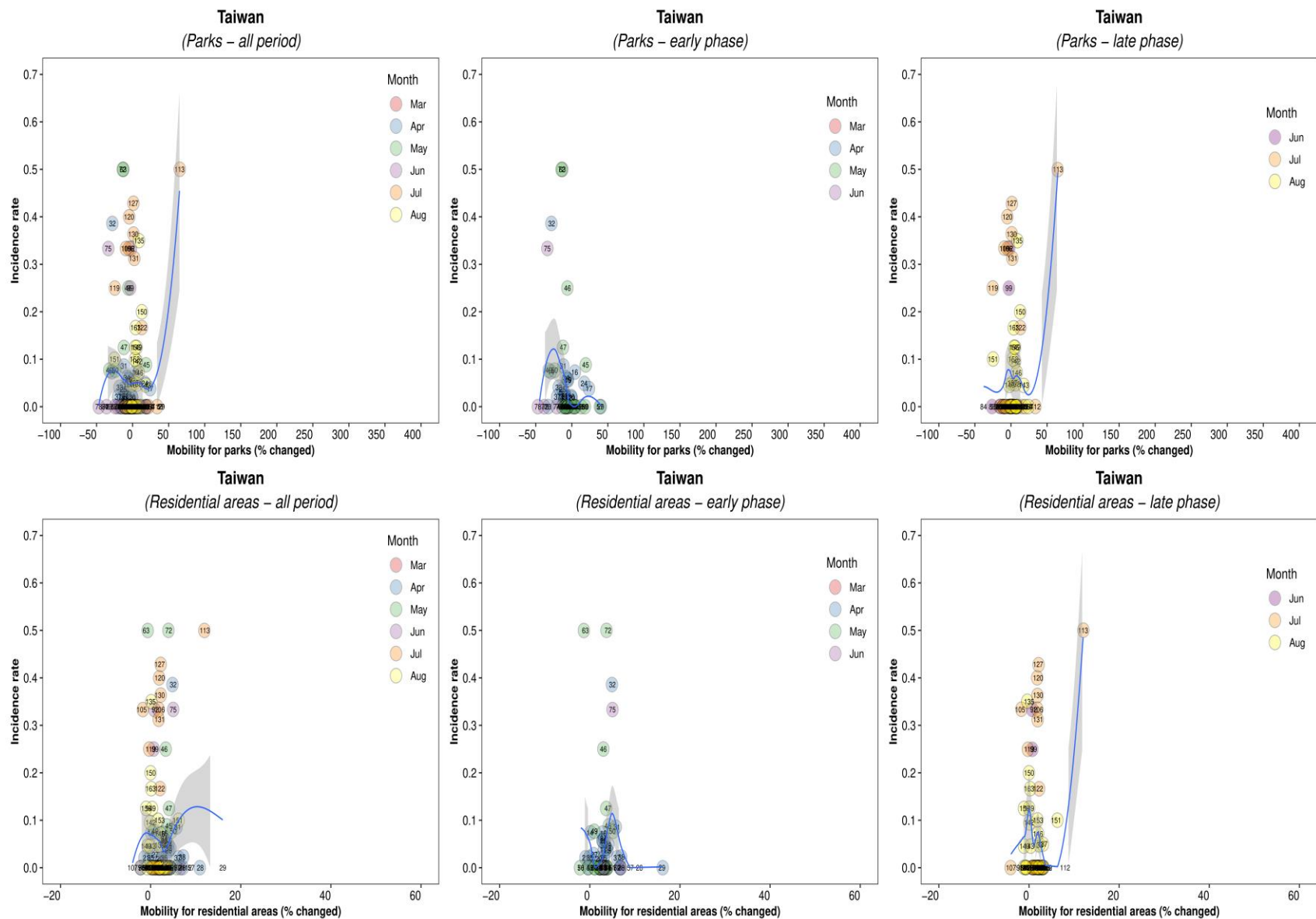


**South Korea**  
(Residential areas – early phase)

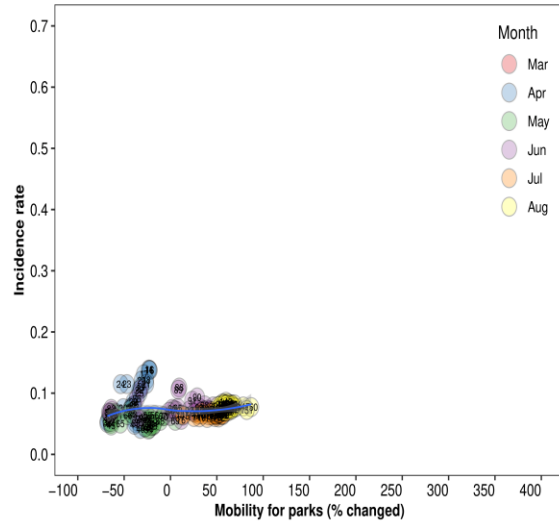


**South Korea**  
(Residential areas – late phase)

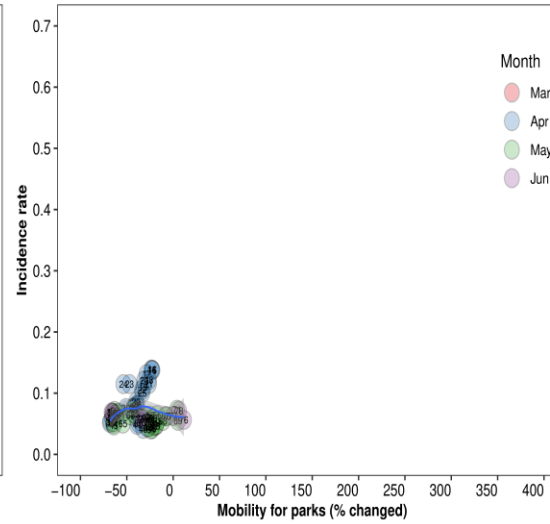




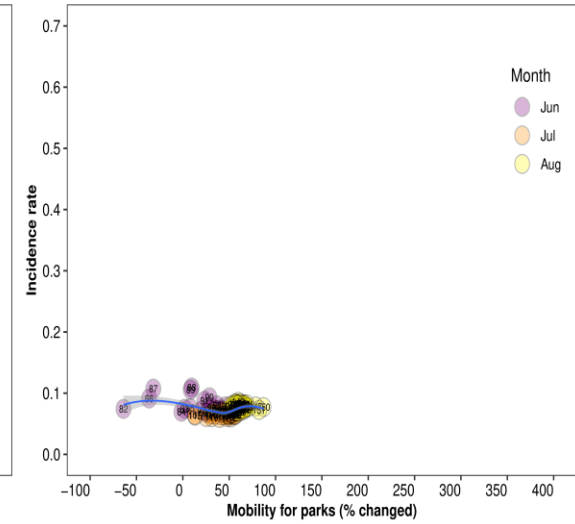
**Turkey**  
(Parks – all period)



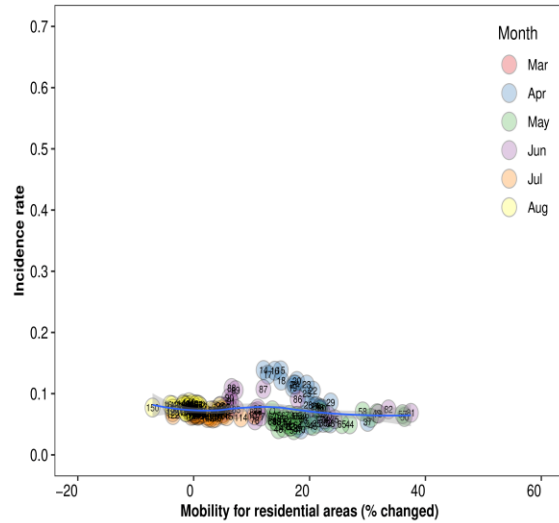
**Turkey**  
(Parks – early phase)



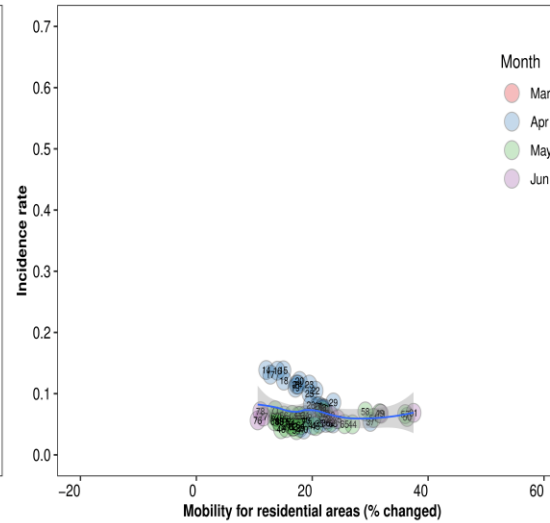
**Turkey**  
(Parks – late phase)



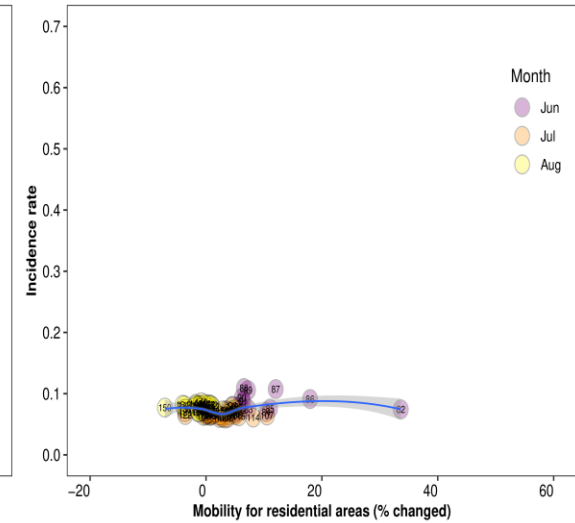
**Turkey**  
(Residential areas – all period)



**Turkey**  
(Residential areas – early phase)

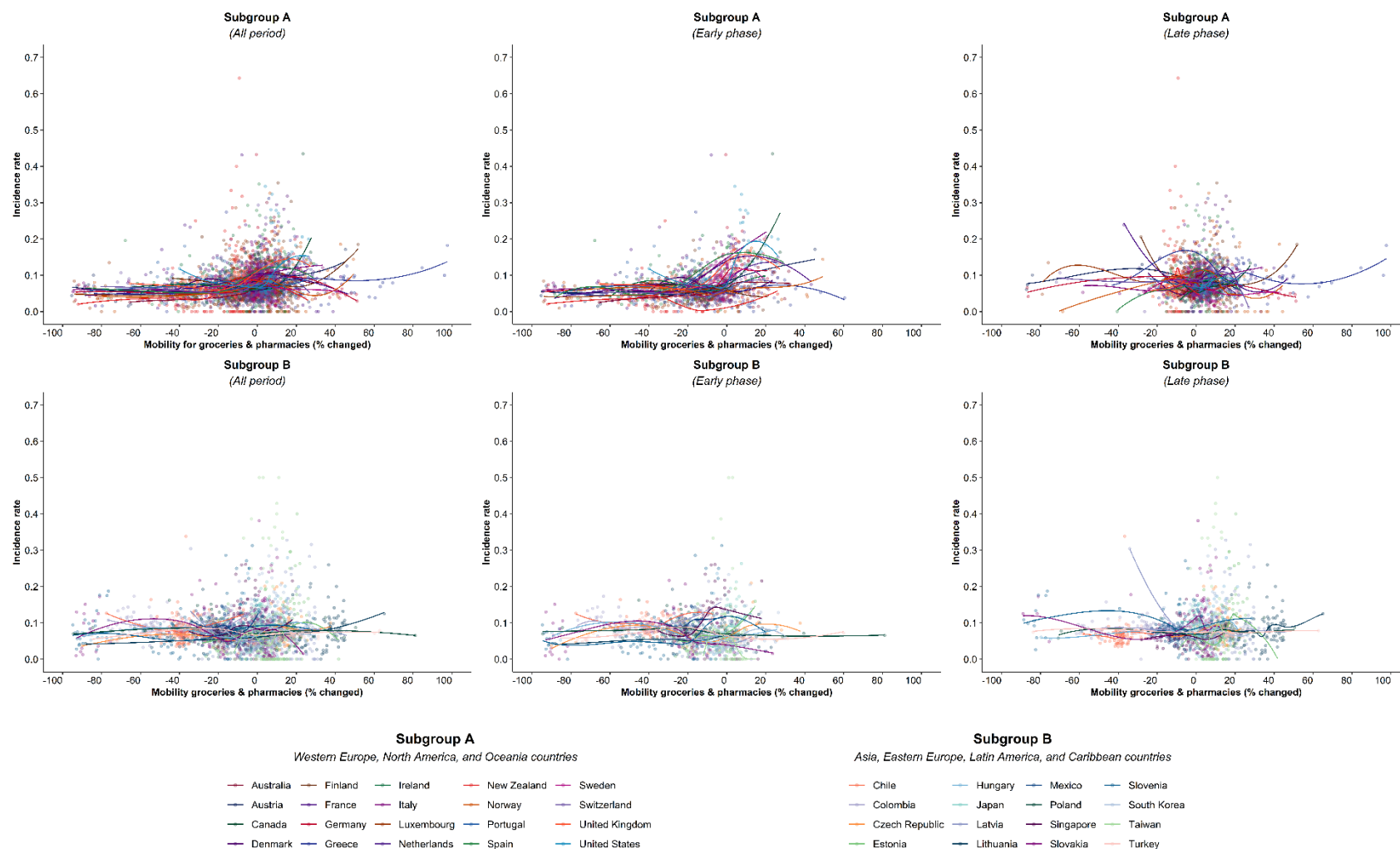


**Turkey**  
(Residential areas – late phase)





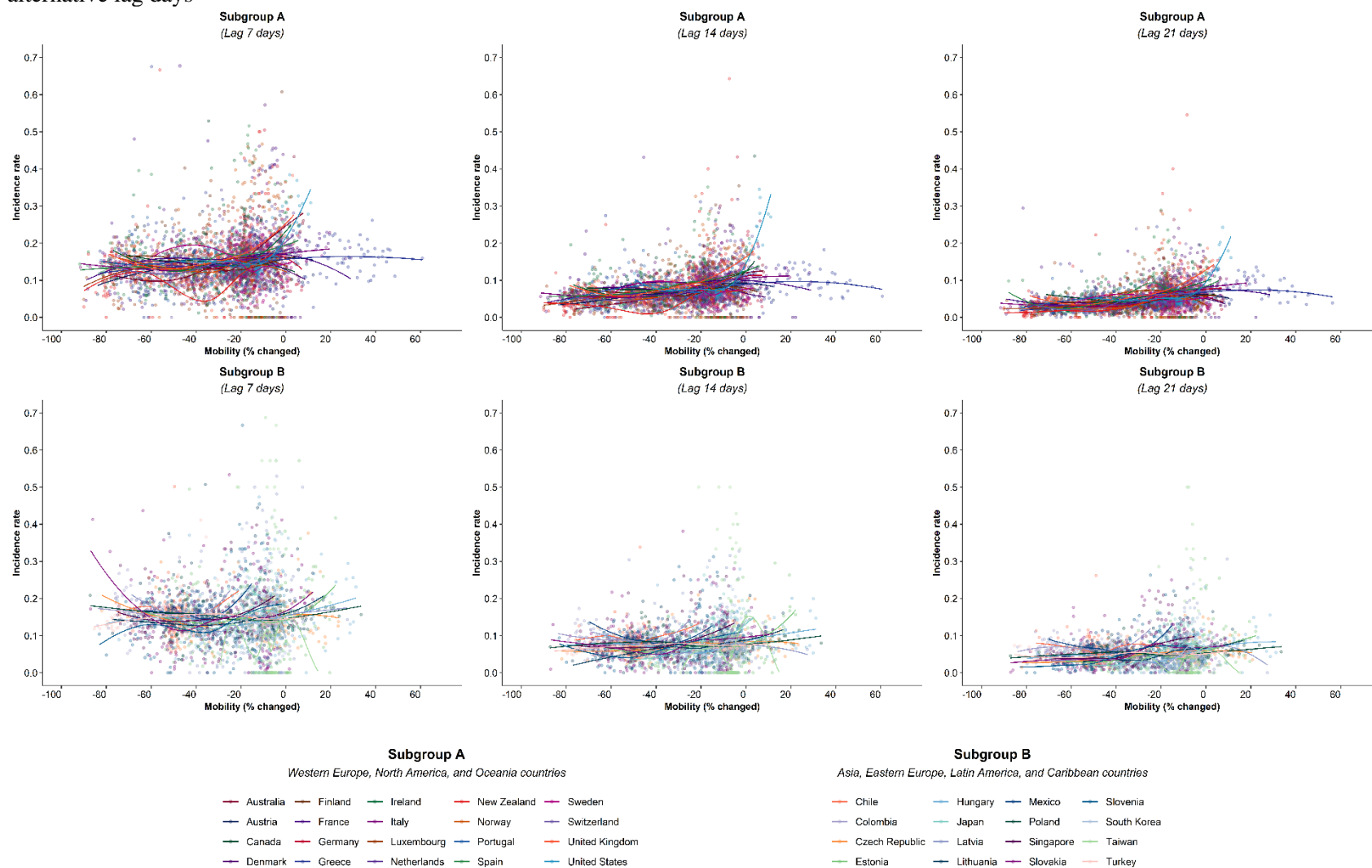
Supplementary Figure 3. Association between new daily incidence rates of COVID-19 and mobility changes in 36 countries, for grocery and pharmacy visits.



Footnote 1. The mobility change measurement period was from the day of the 100th case in each country through August 31, 2020.

Footnote 2. Pandemic phase was defined for each country by the median of the date when the 100<sup>th</sup> case was detected to the end of the study period: early phase for the period before the median date and late phase for the period after the median date.

Supplementary Figure 4. Association between new daily incidence rates of COVID-19 and mobility changes for 36 countries based on alternative lag days



Footnote 1. The mobility change measurement period was from the day of the 100th case in each country through August 31, 2020.