

Joint-Label Fusion Brain Atlases for Dementia Research in Down Syndrome

Nazek Queder¹, Michael J. Phelan³, Lisa Taylor¹, Nicholas Tustison⁴, Eric Doran², Christy Hom¹, Dana Nguyen¹, Florence Lai⁶, Margaret Pulsifer⁶, Julie Price⁶, William C. Kreisl⁸, Diana H. Rosas⁶, Sharon Krinsky-McHale⁷, Adam Brickman⁹, Michael A. Yassa^{1,5}, Nicole Schupf⁹, Wayne Silverman², Ira T. Lott², David B. Keator¹.

1 Department of Psychiatry and Human Behavior, University of California, Irvine, CA, 92697 USA.

2 Department of Pediatrics, University of California, Irvine Medical Center, Orange, CA, 92868 USA.

3 Institute for Memory Impairments and Neurological Disorders, UC Irvine, CA 92697 USA.

4 Department of Radiology, University of Virginia, Charlottesville, VA, 22908 USA.

5 Department of Neurobiology and Behavior and Center for the Neurobiology of Learning and Memory, University of California, Irvine, CA, 92697 USA.

6 Massachusetts General Hospital, Harvard University, Boston, MA., 02114 USA.

7 New York State Institute for Basic Research in Developmental Disabilities, New York, NY., 10025 USA.

8 Department of Neurology, Columbia University, New York, NY., 10025 USA.

9 Department of Epidemiology, Columbia University, New York, NY., 10025 USA.

Corresponding Author:

Nazek Queder

nqueder@hs.uci.edu

University of California, Irvine

Irvine Hall rm. 164 - Zot 3960

Irvine, CA 92697

Abstract

Research suggests a link between Alzheimer's Disease in Down Syndrome (DS) and the overexpression of amyloid plaques. Using Positron Emission Tomography (PET) we can assess the in-vivo regional amyloid load using several available ligands. To measure amyloid distributions in specific brain regions, a brain atlas is used. A popular method of creating a brain atlas is to segment a participant's structural Magnetic Resonance Imaging (MRI) scan. Acquiring an MRI is often challenging in intellectually-impaired populations because of contraindications or data exclusion due to significant motion artifacts or incomplete sequences related to general discomfort. When an MRI cannot be acquired, it is typically replaced with a standardized brain atlas derived from neurotypical populations which may be inappropriate for use in DS. In this project, we create a series of disease and diagnosis-specific (cognitively stable, mild cognitive impairment (MCI-DS), and dementia) probabilistic group atlases of participants with DS and evaluate their accuracy of quantifying regional amyloid load compared to our ground truth individual MRI-based segmentations. Further, we compare the diagnostic-specific atlases with a probabilistic atlas constructed from similar-aged cognitively-stable neurotypical participants. We hypothesized that regional PET signals will best match the ground truth by using DS group atlases that aligns with a participant's disorder and disease status (e.g. DS and MCI-DS). Our results vary by brain region but generally show that using a disorder-specific atlas in DS better matches the ground truth than using an atlas constructed from cognitively-stable neurotypical participants. We found no additional benefit of using a disease-state specific atlas. All atlases are made publicly available for the research community.

Keywords: Down Syndrome, dementia, Joint-label-fusion atlas, MRI, Amyloid PET, Region of Interest.

Abbreviations: AD, DS, A β , DSG, CS-DS, CS-NT, LOOCV, ROI, MSE, MRI, PET, JLF, CS, MCI-DS, DEM.

SUPPLEMENTAL MATERIAL:

S1. Differences in Segmentations:

Our study mainly focused on quantifying the differences between our atlases (i.e. DSG, CS-DS, CS-NT) and the Individual MRI (IM) Freesurfer segmentations. To understand the structural differences in segmentation labels in each region of interest (ROI), each participant's IM was contrasted with our atlases to calculate the mean square error (MSE) and to produce a Freesurfer segmented image of the difference. Shown in Figure S1, the first two columns illustrate the quantification between the IM segmentations atlas subtracted from each of our atlases (i.e. DSG, CS-DS, CS-NT) with the last column representing the difference in segments between the two atlases. Only Freesurfer segmentation images of participants who's MSE scores were identified as outliers were included in the illustration in Figure S. It's important to note that the differences are often located along the region boundaries with a few exceptions.

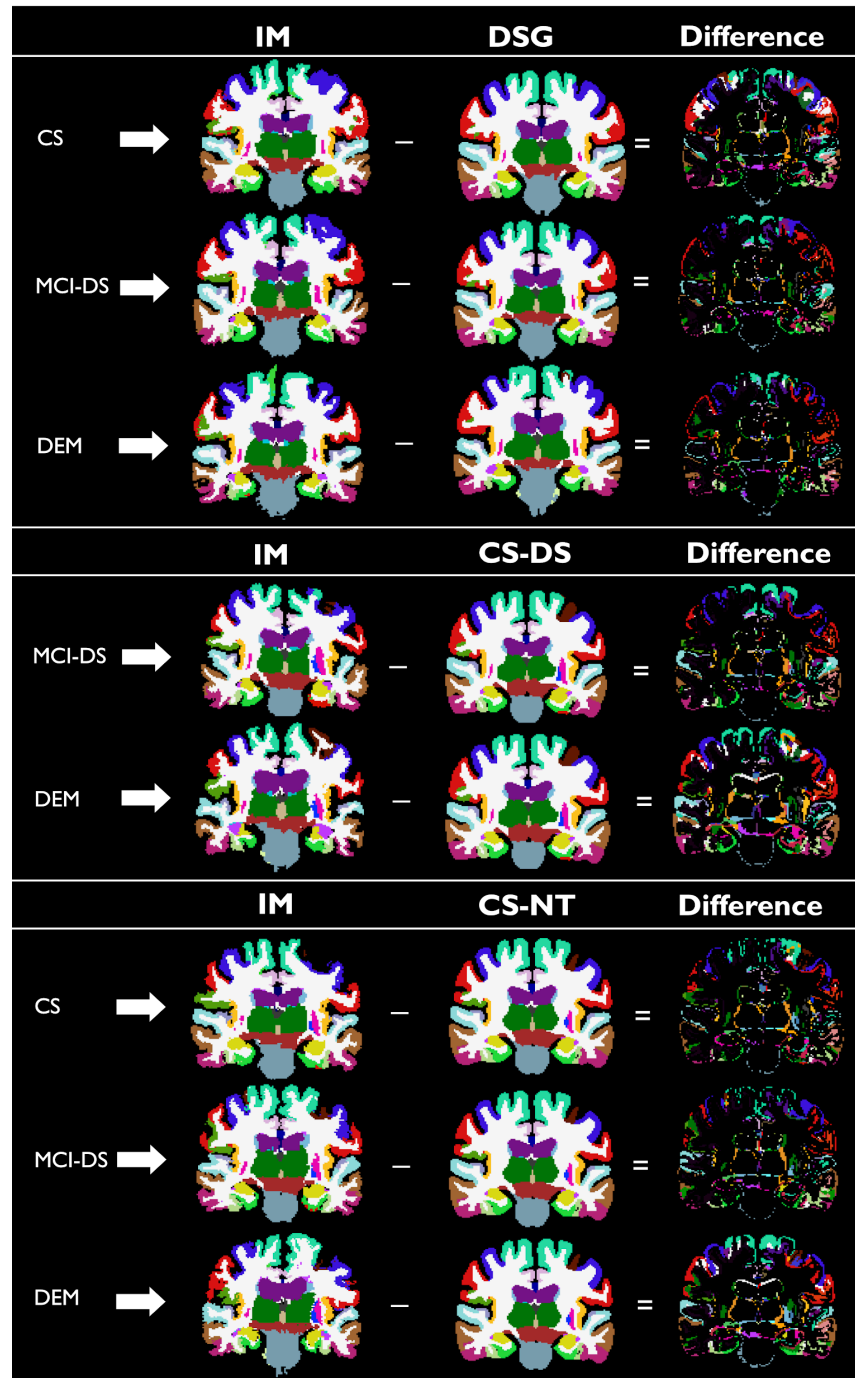


Figure S1: The top section includes examples showing three DSG atlases constructed using participants with DS and within each disease state (e.g. CS, MCI-DS, or DEM) compared to selected individual (IM) atlases of the left out participant. The middle and the last section include examples showing CS-DS and CS-NT atlases constructed from cognitively stable participants with DS and neurotypical participants respectively compared to IM atlases within disease status. The last column shows the difference between the atlases.

S2. ROI PET Amyloid Linear Regression Analysis

Fixed linear regression analysis was performed to evaluate the impact of regional amyloid load on the differences in PET amyloid average values between our atlases (i.e. DSG, CS-DS, CS-NT) and individual MRI (IM) segmentations, shown in figures S1.1, S1.2, and S1.3. The model evaluates the differences between our atlases and IM respectively as a function of the mean amyloid load of the two atlases in a region of interest (ROI) at $p < 0.05$ significance level. Regression lines with positive estimates indicate higher PET amyloid average values given by our atlases compared to IM. Results indicate that the significance of the results varies across our atlases and the three diagnostic groups (cognitively stable (CS), Mild cognitive impairment - Down Syndrome (MCI-DS), and Demented (DEM)). Surviving the p-value adjustments: as the regional mean amyloid load increases, both the DSG and the CS-NT atlases resulted in higher estimation of PET amyloid average values in the Dorsal Striatum for the CS group and in the Anterior Cingulate for the MCI-DS group, whereas the CS-DS atlas gave higher estimate in the Inferior Temporal and the Middle Temporal for the MCI-DS groups. No ROI's survived the p-value adjustments for the DEM group across our atlases. The increase in the mean amyloid load between DSG and CS-NT atlases and IM impacts the differences in same regions (i.e. Dorsal Striatum and the Anterior Cingulate) across the diagnostic groups. In contrast, the DS-CS results have shown that only MCI-DS is impacted by the increase of amyloid load in both the inferior and middle temporals.

S2.1 ROI Linear Regression Model Analysis Between DSG Atlases and IM

	CS				MCI-DS				DEM			
Region	<i>Estimate</i>	<i>t(48)</i>	<i>p</i>	<i>Adj p</i>	<i>Estimate</i>	<i>t(17)</i>	<i>p</i>	<i>Adj p</i>	<i>Estimate</i>	<i>t(10)</i>	<i>p</i>	<i>Adj p</i>
Anterior Cingulate	-0.047	-1.861	.067	.670	0.155	3.058	.003*	.045*	0.012	0.276	.783	.968
Dorsal Striatum	0.105	4.556	.000*	.000*	-0.080	-1.924	.058	.638	-0.071	-1.469	.146	.968
Entorhinal Cortex	0.077	0.812	.419	.956	-0.085	-0.578	.565	.984	-0.101	-0.597	.553	.968
Hippocampus	0.024	0.479	.634	.956	0.036	0.505	.615	.984	-0.073	-0.887	.378	.968
Inferior Parietal	-0.073	-2.069	.042*	.504	0.109	2.276	.026*	.312	0.082	1.546	.127	.968
Inferior Temporal	0.018	0.443	.659	.956	0.047	0.826	.411	.984	0.062	0.976	.333	.968
Lateral Orbitofrontal	-0.046	-1.052	.296	.956	0.149	1.942	.056	.616	0.140	1.884	.064	.747
Lateral Occipital	0.058	1.196	.236	.956	-0.023	-0.341	.734	.984	-0.010	-0.140	.889	.968
Medial Orbitofrontal	-0.038	-1.254	.214	.956	0.001	0.020	.984	.984	0.087	1.675	.098	.945
Middle Temporal	-0.002	-0.055	.956	.956	0.051	1.256	.213	.984	0.060	1.261	.211	.968
Orbitofrontal	-0.036	-1.060	.293	.956	0.085	1.395	.167	.984	0.123	2.148	.035*	.490
Posterior Cingulate	-0.029	-1.612	.111	.888	0.019	0.535	.594	.984	0.012	0.360	.720	.968
Rostral Middle Frontal	-0.005	-0.164	.870	.956	-0.028	-0.583	.562	.984	-0.002	-0.040	.968	.968
Superior Frontal	-0.051	-1.952	.055	.605	0.086	1.955	.054	.594	0.057	1.163	.249	.968
Superior Temporal	-0.009	-0.256	.798	.956	-0.010	-0.197	.844	.984	-0.011	-0.175	.862	.968

Figure S2.1: This table includes linear regression results comparing the average amyloid differences when using the DSG atlas compared to the IM atlas for each diagnostic group. Negative t-values indicate regions where the DSG atlas yields lower average amyloid compared to the IM atlas.

S2.2 ROI Linear Regression Model Analysis Between CS-DS Atlas and IM

	MCI-DS				DEM			
Region	<i>Estimate</i>	<i>t(17)</i>	<i>p</i>	<i>Adj p</i>	<i>Estimate</i>	<i>t(10)</i>	<i>p</i>	<i>Adj p</i>
Anterior Cingulate	0.090	2.244	.034*	.408	-0.087	-1.689	.104	.985
Dorsal Striatum	0.026	1.463	.156	.849	-0.010	-0.339	.737	.985
Entorhinal Cortex	-0.017	-0.193	.849	.849	0.075	0.558	.582	.985
Hippocampus	0.033	0.926	.363	.849	-0.026	-0.470	.642	.985
Inferior Parietal	0.029	0.877	.389	.849	-0.075	-1.430	.165	.985
Inferior Temporal	0.084	3.520	.002*	.028*	-0.051	-1.328	.196	.985
Lateral Orbitofrontal	0.119	2.492	.020*	.240	-0.042	-0.622	.539	.985
Lateral Occipital	0.076	1.632	.115	.849	-0.049	-0.683	.501	.985
Medial Orbitofrontal	-0.018	-0.324	.749	.849	0.037	0.490	.628	.985
Middle Temporal	0.085	3.319	.003*	.042*	-0.060	-1.372	.182	.985
Orbitofrontal	0.064	1.327	.196	.849	-0.001	-0.019	.985	.985
Posterior Cingulate	-0.011	-0.424	.675	.849	0.032	0.949	.352	.985
Rostral Middle Frontal	-0.026	-0.607	.549	.849	0.042	0.672	.508	.985
Superior Frontal	0.027	0.699	.491	.849	0.011	0.186	.854	.985
Superior Temporal	0.037	1.091	.286	.849	0.007	0.131	.897	.985

Figure S2.2: This table includes linear regression results comparing the average amyloid differences when using the CS-DS atlas compared to the IM atlas for each diagnostic group. Negative t-values indicate regions where the CS-DS atlas yields lower average amyloid compared to the IM atlas.

S2.3 ROI Linear Regression Model Analysis Between CS-NT Atlas and IM

	CS				MCI-DS				DEM			
Region	<i>Estimate</i>	<i>t(49)</i>	<i>p</i>	<i>Adj p</i>	<i>Estimate</i>	<i>t(17)</i>	<i>p</i>	<i>Adj p</i>	<i>Estimate</i>	<i>t(9)</i>	<i>p</i>	<i>Adj p</i>
Anterior Cingulate	-0.041	-1.646	0.104	0.885	0.155	3.107	.003*	.045*	0.046	1.074	0.286	0.931
Dorsal Striatum	0.084	4.026	1.37E-04	.002*	-0.046	-1.225	0.224	0.896	-0.087	-1.94	.056*	0.672
Entorhinal Cortex	-0.115	-1.233	0.221	0.885	-0.203	-1.37	0.175	0.81	-0.024	-0.15	0.881	0.931
Hippocampus	0.028	0.763	0.448	0.885	0.013	0.238	0.812	0.948	-0.018	-0.307	0.76	0.931
Inferior Parietal	-0.043	-1.101	0.275	0.885	0.046	0.849	0.398	0.948	-0.005	-0.087	0.931	0.931
Inferior Temporal	0.004	0.145	0.885	0.885	0.083	2.298	.024*	0.288	0.052	1.274	0.207	0.931
Lateral Occipital	-0.012	-0.285	0.776	0.885	0.085	1.421	0.16	0.8	0.042	0.635	0.527	0.931
Lateral Orbitofrontal	-0.029	-0.814	0.418	0.885	0.149	2.371	.020*	0.24	0.098	1.572	0.12	0.931
Medial Orbitofrontal	-0.028	-0.786	0.435	0.885	-0.004	-0.066	0.948	0.948	0.038	0.594	0.554	0.931
Middle Temporal	0.019	0.775	0.441	0.885	0.085	2.505	.014*	0.168	0.046	1.13	0.262	0.931
Orbitofrontal	-0.018	-0.52	0.605	0.885	0.077	1.269	0.209	0.836	0.071	1.218	0.227	0.931
Posterior Cingulate	-0.027	-1.574	0.12	0.885	0.024	0.7	0.486	0.948	0.041	1.352	0.18	0.931
Rostral Middle Frontal	0.053	1.544	0.127	0.885	-0.073	-1.26	0.212	0.848	-0.024	-0.401	0.69	0.931
Superior Frontal	-0.026	-0.957	0.342	0.885	0.066	1.401	0.165	0.81	0.068	1.294	0.2	0.931
Superior Temporal	0.012	0.368	0.714	0.885	0.037	0.78	0.438	0.948	0.043	0.767	0.446	0.931

Figure S2.3: This table includes linear regression results comparing the average amyloid differences when using the CS-NT atlas compared to the IM atlas for each diagnostic group. Negative t-values indicate regions where the CS-NT atlas yields lower average amyloid compared to the IM atlas.