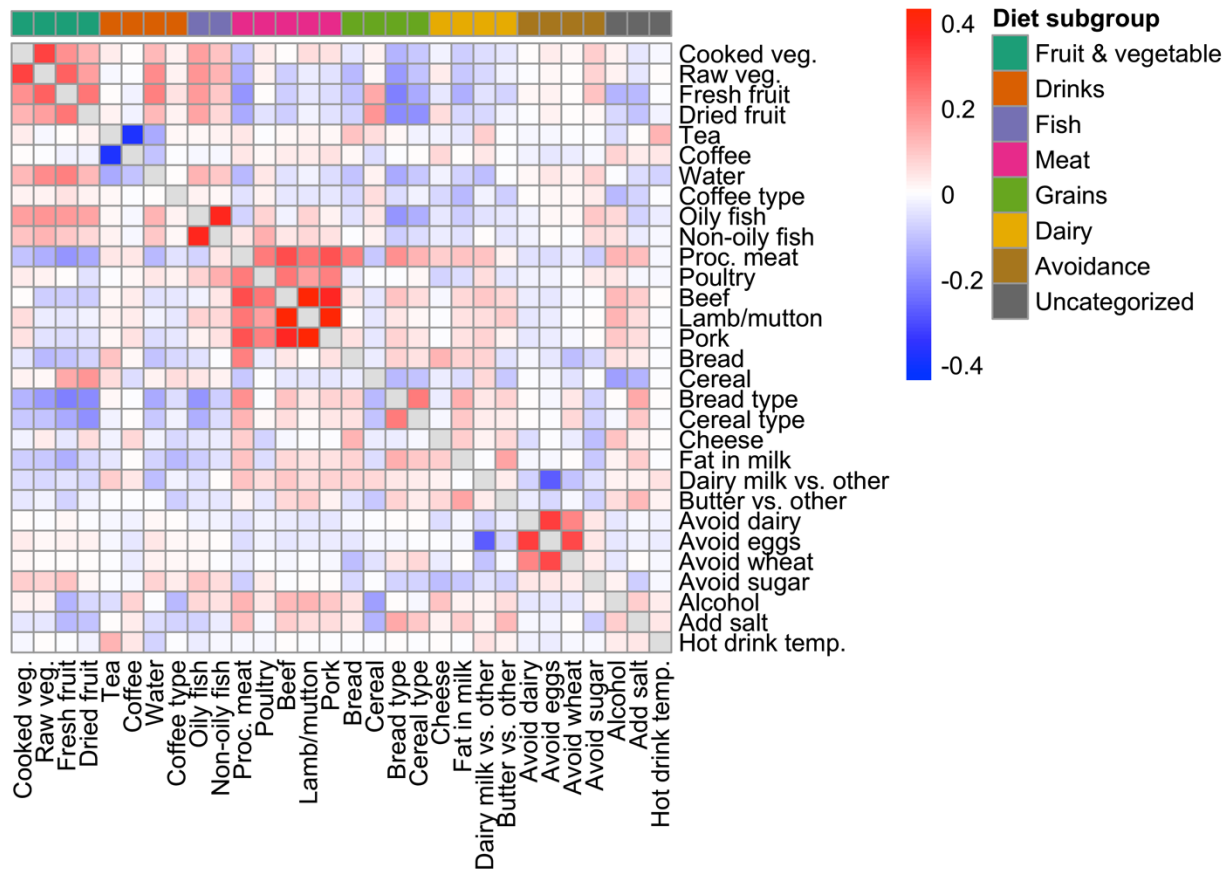


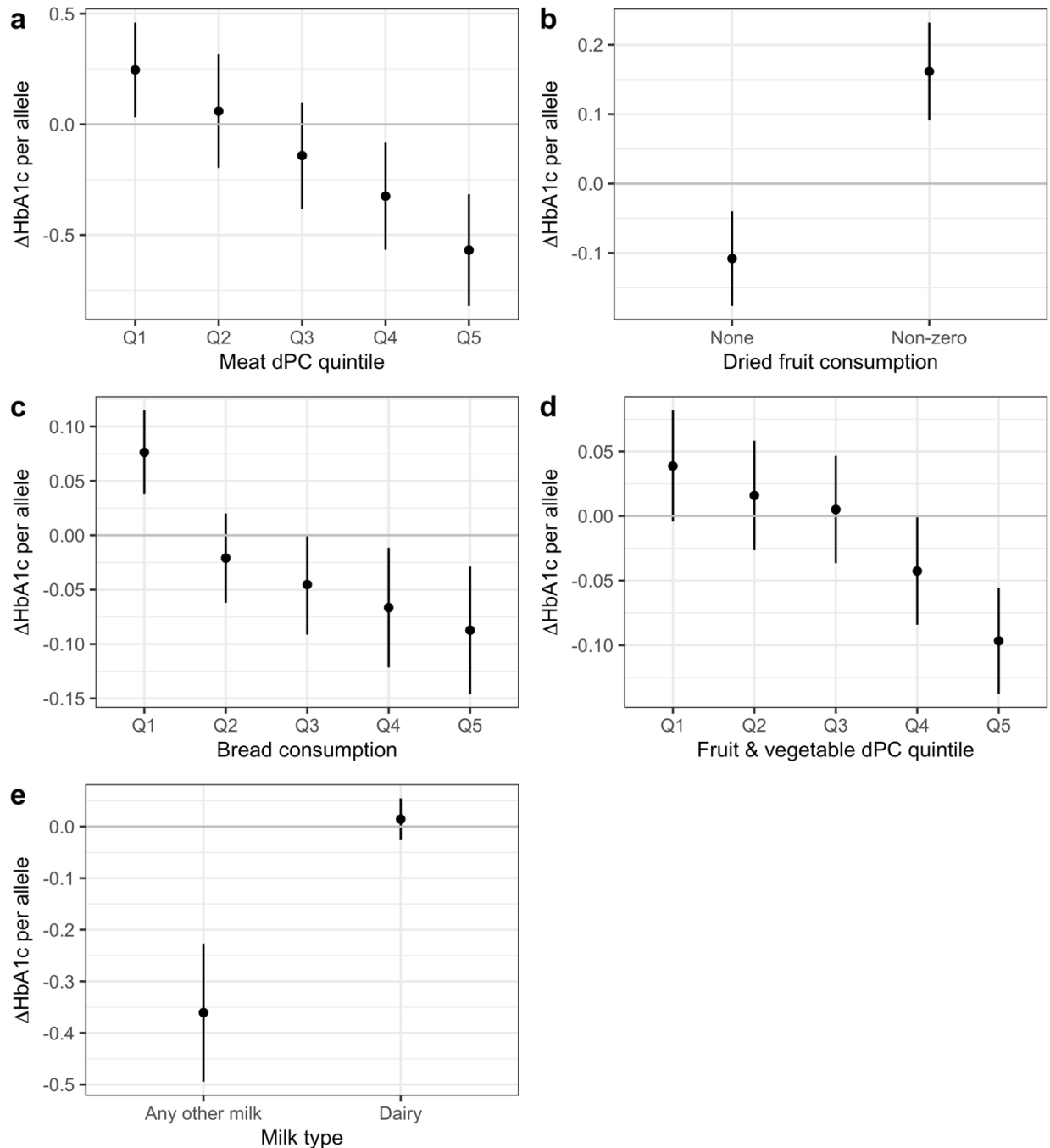
# Supplementary Materials: Genome-wide gene-diet interaction analysis in the UK Biobank identifies novel effects on Hemoglobin A1c

Kenneth E. Westerman, Jenkai Miao, Daniel I. Chasman, Jose C. Florez, Han Chen, Alisa K. Manning, Joanne B. Cole

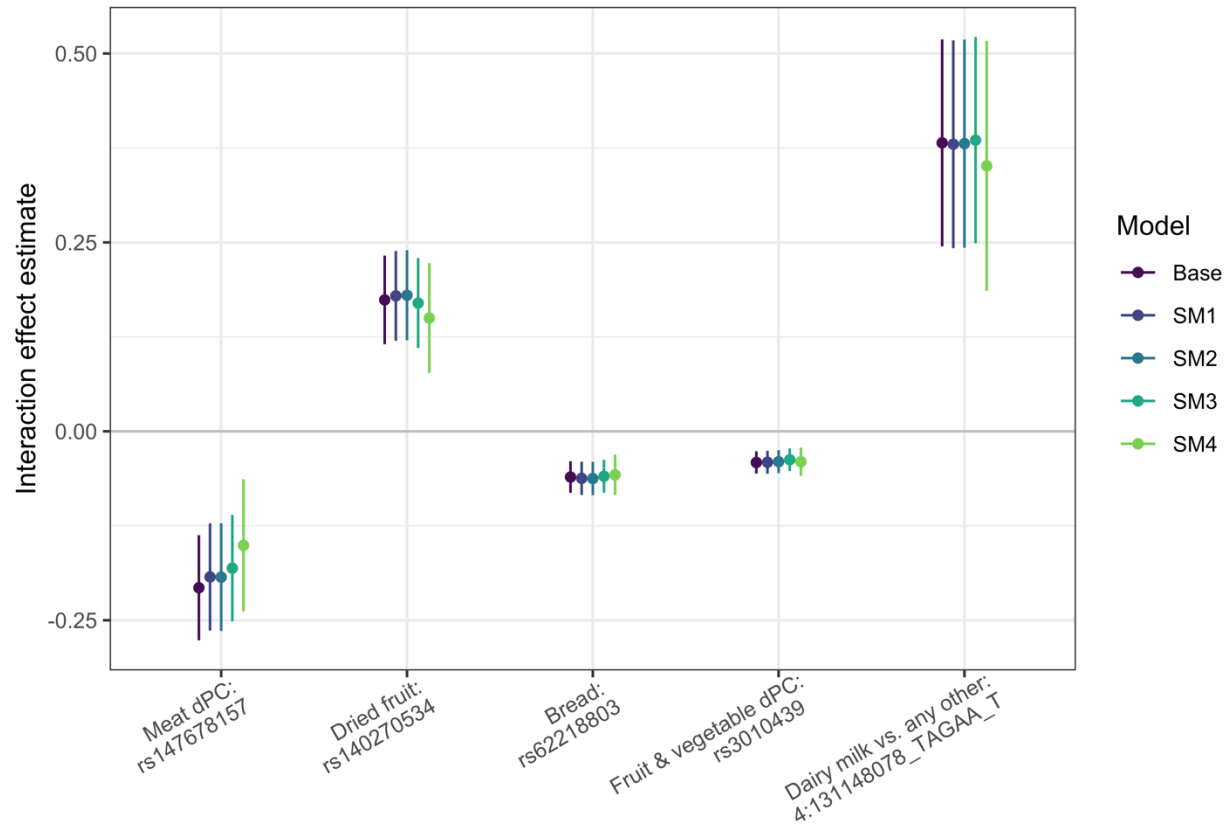
## Supplementary Figures



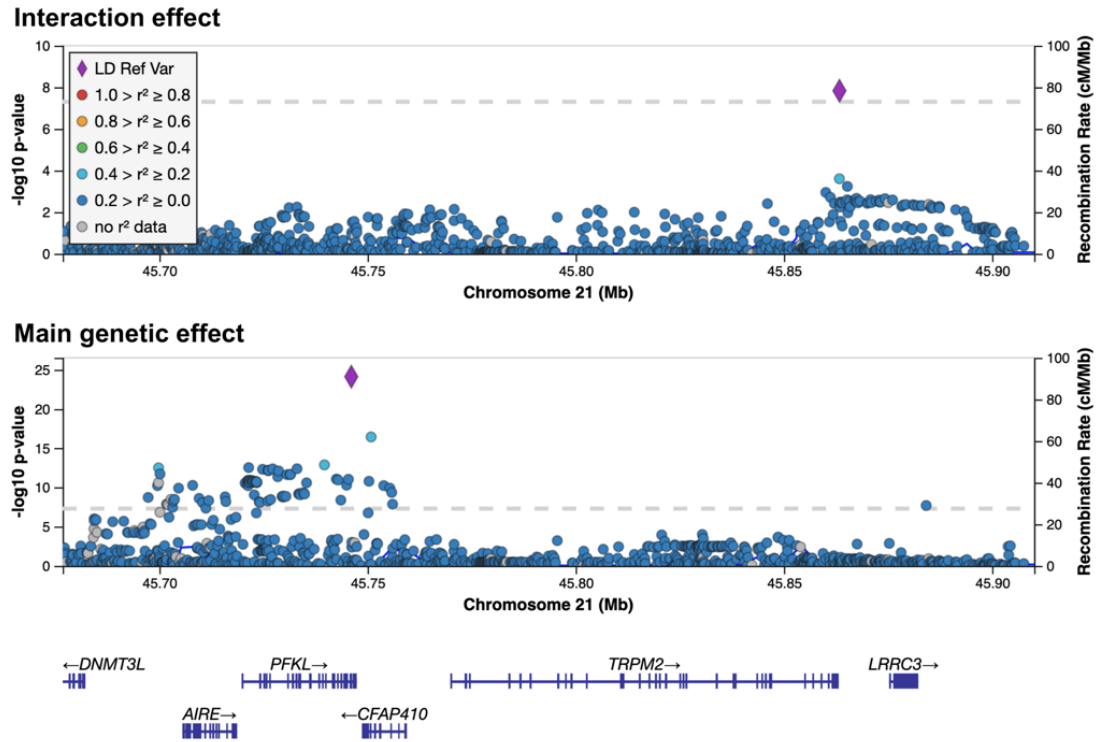
**Supplementary Figure S1:** Correlations between dietary traits. Heatmap shows Pearson correlations between individual dietary traits. Colors in the top bar correspond to the assigned dietary trait subgroup.



**Supplementary Figure S2:** Diet-stratified effects at genome-wide significant index variants. a) rs147678157 genotype effect sizes on HbA1c (y-axis) after stratification into quintiles of meat dPC values (x-axis). b) As in (a), but instead using rs140270534 genotypes and dried fruit consumption. c) As in (a), but instead using genotypes at rs62218803 and bread consumption. d) As in (a), but instead using rs3010439 genotypes and fruit & vegetable dPC. e) As in (a), but instead using rs3010439 genotypes and milk type. Points and bars denote stratified main effect estimates and 95% confidence intervals from the primary model. Genotype-stratified effects are shown only for genotype groups containing >100 individuals. Effect estimates are in terms of mmol/mol HbA1c. s.d.: standard deviation.



**Supplementary Figure S3:** Results from sensitivity models at genome-wide significant ( $p < 5 \times 10^{-8}$  index variants from the primary analysis. Colors correspond to sensitivity models (SM1: inclusion of genotype-by-covariate interactions for all covariates, SM2: additional adjustment for birthplace and assessment center, SM3: additional adjustment for BMI, smoking, educational attainment, and physical activity), SM4: as in SM3, but including individuals with diabetes). Error bars denote 95% confidence intervals for the interaction effect estimates.



**Supplementary Figure S4:** Regional plot shows minimum  $-\log_{10}(p\text{-values})$  for the bread consumption interaction effect (top panel) and genetic main effect (bottom panel) as a function of genomic position. Colors correspond to linkage disequilibrium with the reference variant (purple) in each panel. s.d.: standard deviation.

## Supplementary Tables

**Supplementary Table S1:** UK Biobank population description.

Trait	Value
N	340705
Sex	50% female
Age in years	57 (8)
Current smoking	10.4%
BMI	27.1 (4.6)
HbA1c (mmol/mol)	35 (3.7)
Physical activity in METs/wk	48.1 (62)
Educational attainment in US school yr. equivalents	15 (5)

Continuous variables are represented as: mean (standard deviation). BMI: body mass index, METs: metabolic equivalents.

**Supplementary Table S2:** Derived dietary traits used in this study.

<b>Dietary trait</b>	<b>UKB Source Field</b>	<b>Food sub-group</b>
<b>Cooked vegetables</b>	1289	Fruit & vegetable
<b>Raw vegetables</b>	1299	Fruit & vegetable
<b>Fresh fruit</b>	1309	Fruit & vegetable
<b>Dried fruit</b>	1319	Fruit & vegetable
<b>Tea</b>	1488	Drinks
<b>Coffee</b>	1498	Drinks
<b>Water</b>	1528	Drinks
<b>Decaf vs. regular coffee</b>	1508	Drinks
<b>Oily fish</b>	1329	Fish
<b>Non-oily fish</b>	1339	Fish
<b>Processed meat</b>	1349	Meat
<b>Poultry</b>	1359	Meat
<b>Beef</b>	1369	Meat
<b>Lamb/mutton</b>	1379	Meat
<b>Pork</b>	1389	Meat
<b>Bread</b>	1438	Grains
<b>Cereal</b>	1458	Grains
<b>White bread vs. brown or whole grain</b>	1448	Grains
<b>Whole grain cereal vs. other types</b>	1468	Grains
<b>Cheese</b>	1408	Dairy
<b>Level of fat in milk</b>	1418	Dairy
<b>Dairy milk vs. any other</b>	1418	Dairy
<b>Butter vs. other spreads</b>	1428	Dairy
<b>Avoid dairy</b>	6144	Avoidance
<b>Avoid eggs</b>	6144	Avoidance
<b>Avoid wheat</b>	6144	Avoidance
<b>Avoid sugar</b>	6144	Avoidance
<b>Alcohol</b>	1558, 1568, 1578, 1588, 1598, 1608, 4407, 4418, 4429, 4440, 4451, 4462, 5364	
<b>Add salt to food</b>	1478	
<b>Hot drink temperature</b>	1518	

**Supplementary Table S3:** Associations of genome-wide significant index variants with alternate dietary traits and dPCs.

Dietary trait	P - rs3010439	P - rs140270534	P - rs147678157	P - rs62218803	P - 4:131148078_T AGAA T
Fruit & vegetable dPC	4.53E-08	6.87E-05	>0.01	>0.01	>0.01
Meat dPC	>0.01	>0.01	5.45E-09	>0.01	>0.01
Grains dPC	>0.01	0.0035	>0.01	0.00959	>0.01
Global dPC	>0.01	0.00245	9.84E-06	>0.01	>0.01
Cooked vegetables	9.84E-07	0.0043	>0.01	>0.01	>0.01
Raw vegetables	0.00166	>0.01	>0.01	>0.01	>0.01
Fresh fruit	0.000423	>0.01	>0.01	>0.01	>0.01
Dried fruit	0.00643	6.25E-09	>0.01	>0.01	>0.01
Bread	>0.01	>0.01	>0.01	1.47E-08	>0.01
Tea	>0.01	>0.01	0.00589	>0.01	>0.01
Processed meat	>0.01	>0.01	0.000201	>0.01	>0.01
Beef	>0.01	>0.01	3.72E-05	>0.01	>0.01
Lamb/mutton	>0.01	>0.01	2.98E-05	>0.01	>0.01
Pork	>0.01	>0.01	1.68E-06	>0.01	>0.01
Avoid wheat	>0.01	>0.01	>0.01	0.00709	>0.01
Dairy milk vs. any other	>0.01	>0.01	>0.01	>0.01	4.66E-08
White bread vs. brown/WG	>0.01	0.00907	>0.01	>0.01	>0.01

All numeric cells represent interaction *p*-values from the primary model. Diet traits and dPCs not shown did not interact at *p* < 0.01 with any of the variants in this table.

**Supplementary Table S4:** Results from sensitivity models at genome-wide significant variant-trait pairs from the primary analysis.

Dietary trait	Index variant	Diet effect	Genetic main effect	Interaction effect - Base	Interaction effect - SM1	Interaction effect - SM2	Interaction effect - SM3	Interaction effect - SM4
Meat dPC	rs147678157	0.14 (7.22x10 <sup>-115</sup> )	-0.131 (0.0156)	-0.207 (5.45x10 <sup>-09</sup> )	-0.193 (1.05x10 <sup>-07</sup> )	-0.193 (1.14x10 <sup>-07</sup> )	-0.181 (4.69x10 <sup>-07</sup> )	-0.151 (0.000724)
Dried fruit	rs140270534	-0.141 (5.08x10 <sup>-115</sup> )	0.0155 (0.534)	0.174 (6.25x10 <sup>-09</sup> )	0.179 (3.43x10 <sup>-09</sup> )	0.18 (3.31x10 <sup>-09</sup> )	0.17 (2.2x10 <sup>-08</sup> )	0.15 (5.28x10 <sup>-05</sup> )
Bread	rs62218803	0.18 (2.08x10 <sup>-173</sup> )	-0.0138 (0.19)	-0.0605 (1.47x10 <sup>-08</sup> )	-0.0622 (3.11x10 <sup>-08</sup> )	-0.0625 (3.08x10 <sup>-08</sup> )	-0.0595 (7.64x10 <sup>-08</sup> )	-0.0576 (2.55x10 <sup>-05</sup> )
Fruit & vegetable dPC	rs3010439	-0.189 (4.72x10 <sup>-202</sup> )	-0.0155 (0.106)	-0.0412 (4.53x10 <sup>-08</sup> )	-0.0409 (1.19x10 <sup>-07</sup> )	-0.0402 (2.21x10 <sup>-07</sup> )	-0.0376 (1.08x10 <sup>-06</sup> )	-0.0402 (2.15x10 <sup>-05</sup> )
Dairy milk vs. any other	4:131148078_TAGAA_T	0.0785 (2.44x10 <sup>-38</sup> )	-0.0168 (0.396)	0.382 (4.66x10 <sup>-08</sup> )	0.38 (6.08x10 <sup>-08</sup> )	0.381 (5.97x10 <sup>-08</sup> )	0.385 (3.11x10 <sup>-08</sup> )	0.351 (3.14x10 <sup>-05</sup> )

Effects are shown as: coefficient (*p*-value).

<sup>1</sup>Sensitivity model 1 includes genotype interaction terms for all covariates

<sup>2</sup>Sensitivity model 2 additionally includes indicator variables for assessment center and birthplace (and interactions)

<sup>3</sup>Sensitivity model 3 additionally includes BMI, smoking, educational attainment, and physical activity (and interactions)

<sup>4</sup>Sensitivity model 4 additionally includes individuals with type 1 and type 2 diabetes

**Supplementary Table S5:** Multi-ancestry replication of genome-wide significant index variants associated with dPCs at the constituent trait level.

Dietary trait	Index variant	EUR Effect (P)	AFR Effect (P)	EAS Effect (P)	SAS Effect (P)
Fruit & vegetable dPC	rs3010439	0.041 (4.5x10 <sup>-08</sup> )	-0.102 (0.22)	0.117 (0.08)	-0.058 (0.59)
Fresh fruit	rs3010439		0.306 (0.0082)	-0.01 (0.92)	-0.008 (0.95)
Cooked vegetables	rs3010439		0.031 (0.8)	-0.239 (0.012)	0.238 (0.082)
Raw vegetables	rs3010439		-0.103 (0.37)	-0.115 (0.23)	0.029 (0.83)
Dried fruit	rs3010439		0.049 (0.72)	-0.101 (0.31)	0.117 (0.44)
Meat dPC	rs147678157	-0.207 (5.5x10 <sup>-09</sup> )	-1.625 (0.2)	1.471 (0.091)	1.332 (0.72)
Pork	rs147678157		1.112 (0.5)	2.49 (0.1)	3.374 (0.39)
Processed meat	rs147678157		-3.609 (0.47)	3.239 (0.022)	8.369 (0.21)
Lamb/mutton	rs147678157		-0.221 (0.89)	2.035 (0.079)	-3.789 (0.33)
Beef	rs147678157		-2.237 (0.35)	2.044 (0.15)	-1.995 (0.6)
Poultry	rs147678157		-2.282 (0.27)	-0.38 (0.55)	-1.062 (0.73)



**Supplementary Table S6:** Within-population validation of genome-wide significant index variants.

Diet trait	Index variant	Effect-Base	Effect-FU	Effect-FG
Meat dPC	rs147678157	-0.207 (5.5x10 <sup>-09</sup> )	-0.219 (0.24)	-0.053 (0.02)
Dried fruit	rs140270534	0.174 (6.3x10 <sup>-09</sup> )	0.114 (0.47)	0.031 (0.23)
Bread	rs62218803	-0.061 (1.5x10 <sup>-08</sup> )	-0.1 (0.072)	-0.004 (0.59)
Fruit and vegetable dPC	rs3010439	0.041 (4.5x10 <sup>-08</sup> )	-0.059 (0.16)	-0.007 (0.2)
Dairy milk vs. any other	4:131148078_TAGAA_T	0.382 (4.7x10 <sup>-08</sup> )	1.083 (0.0047)	0.063 (0.22)

Cells display beta (*p*-value) for interaction effect estimate. FU: follow-up, FG: fasting glucose.

**Supplementary Table S7:** Replication of genome-wide significant index variants in the Women's Genome Health Study dataset.

Dietary trait	Variant	Effect allele	Effect allele frequency	Genetic main effect	Interaction effect
Fruit	rs140270534	G	0.046	0.0751 (0.363)	-0.045 (0.591)
Fruits & vegetables	rs3010439	T	0.718	-0.00652 (0.837)	0.0138 (0.663)
Dairy milk vs. none	4:131148078_TAGAA_T	T	0.053	0.191 (0.323)	-0.239 (0.245)

Effects are shown as: coefficient (*p*-value). Replication model in WGHS contains the same covariates as the primary model, other than sex and genotyping array (age, age-squared, and ten genetic PCs).