

Supplemental Data to

“SARS-COV-2 antibody prevalence in patients on dialysis in the US in January 2021”

Supplemental Table 1 Comparison of sampled population, US adult dialysis population, and US adult population (July US Renal sample)

p2

Supplemental Table 2 Seroprevalence of SARS-CoV2 antibodies in patients receiving dialysis in the US (July US Renal population)

p3

Supplemental Figure 1 Differences in seroprevalence by patient and neighborhood characteristics between July 2020 and January 2021

p4

Supplemental Table 1 Comparison of sampled population, US adult dialysis population, and US adult population (July US Renal sample)

Patient characteristics	US Renal population July 2020		U.S. adult dialysis population		U.S. adult population	
	N=11 746		N=499 150		N=253 815 197	
	Count	%	Count	%	Count	%
Age						
18-44	1304	11	60 540	12	117 499 477	46
45-64	4723	40	207 022	41	83 892 606	33
65-79	4298	37	174 341	35	39 949 825	16
≥80	1421	12	57 247	11	12 473 289	5
Sex						
Men	6634	56	285 281	57	123 578 869	49
Women	5112	44	213 869	43	130 236 328	51
Race and Ethnicity**						
Hispanic	1902	18	87 611	18	60 861 275	19
Non-Hispanic white	4226	39	203 421	41	197 202 727	60
Non-Hispanic Black	3042	28	173 190	35	39 717 152	12
Non-Hispanic Other	1672	15	34 928	7	28 493 202	9
ZCTA Majority Race and Ethnicity*^+						
Non-Hispanic white	3538	30	206 678	41	189 968 192	58
Non-Hispanic Black	848	7	54 999	11	12 550 083	4
Hispanic	2250	19	52 953	11	26 310 796	8
Hispanic and Black	1282	11	43 396	9	17 238 911	5
Integrated	3828	33	140 781	28	80 206 374	25
Region						
Northeast	1172	10	78 619	16	44 519 465	18
South	5926	51	214 974	43	96 250 597	38
Midwest	1072	9	94 490	19	52 876 708	21
West	3576	30	111 067	22	60 168 427	24

U.S. adult population in 2018, U.S. adult patients on dialysis population as of January 1 2017.

*Race, ethnicity, and ZCTA Majority Race and Ethnicity computed for total U.S. 2018 population N=326,274,356. &Proportions are reported for persons with available data; 904 (7.7%) in the sample were missing race and ethnicity.

^343 and 583 people in the U.S. Renal Data System and sample populations missing data on ZCTA Majority Race/Ethnicity due to missing zip code respectively. +ZCTA Majority defined as population in ZCTA ≥ 60% Hispanic, Non-Hispanic Black, or Non Hispanic White; if in remainder ZCTAs Hispanic and Black population exceeded ≥60%, ZCTA defined as ‘Hispanic and Black’, else as ‘Other’.

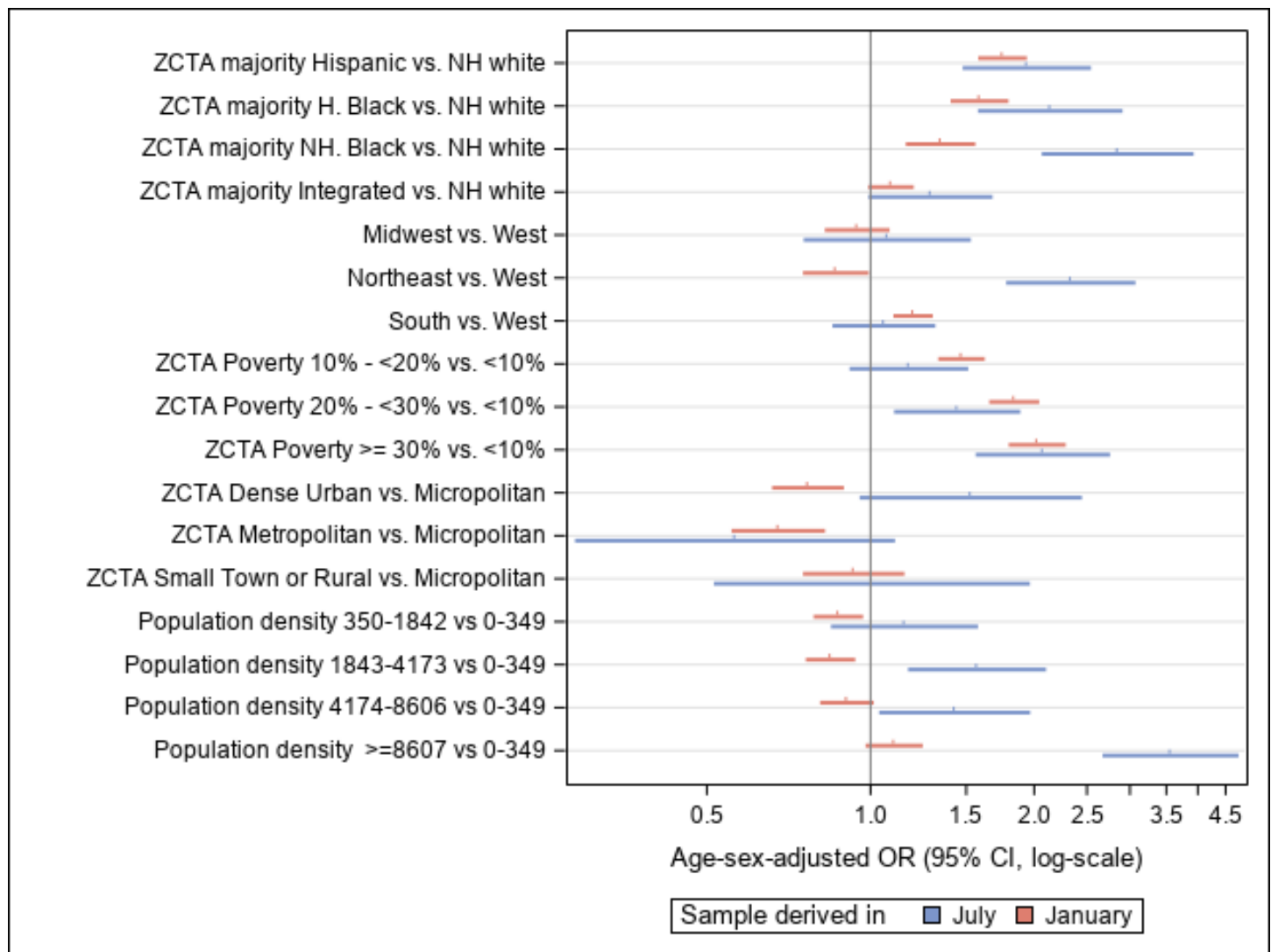
Abbreviations: ZCTA-zip code tabulation area

Supplemental Table 2 Seroprevalence of SARS-CoV-2 antibodies in patients receiving dialysis in the US (July US Renal population)

	Unweighted sample (US Renal population July 2020)		Standardized to US adult dialysis population [#]	Standardized to US adult population ^{&}	Seropositive persons per 100,000 ^Ω
	Count	Seropositive %	Seropositive %	Seropositive %	
Age**					
18-44	74	5.7 (4.4, 6.9)	6.1 (4.5, 7.7)	6.1 (4.5, 7.7)	5857
45-64	231	4.9 (4.3, 5.5)	5.3 (4.5, 6)	5.3 (4.5, 6)	5230
65-79	163	3.8 (3.2, 4.4)	4.2 (3.5, 4.9)	4.2 (3.5, 4.9)	4162
≥80	51	3.6 (2.6, 4.6)	4.1 (2.8 5.3)	4.1 (2.8 5.3)	3984
Sex*					
M	285	4.3 (3.8, 4.8)	5.3 (4.3, 6.3)	5.3 (4.3, 6.3)	5025
F	234	4.6 (4, 5.2)	5.5 (4.4, 6.7)	5.5 (4.4, 6.7)	5544
Race and Ethnicity**					
Hispanic	120	6.3 (5.2, 7.4)	6.9 (5.7, 8.2)	8.0 (5.8, 10.1)	5050
Non-Hispanic white	116	2.7 (2.3, 3.2)	3 (2.4, 3.5)	3.7 (2.6, 4.8)	1613
Non-Hispanic Black	184	6 (5.2, 6.9)	6.4 (5.5, 7.4)	6.7 (5, 8.4)	12367
Other	34	2 (1.4, 2.7)	2.6 (1.7, 3.6)	2.4 (1.2, 3.5)	2492
ZCTA Majority Race and Ethnicity***					
Hispanic	126	5.6 (4.7, 6.6)	6.4 (5.2, 7.5)	8.0 (5.9, 10.0)	12308
Non-Hispanic white	102	2.9 (2.3, 3.4)	3 (2.4, 3.7)	3.2 (2.1, 4.2)	1440
Non-Hispanic Black	68	8 (6.2, 9.8)	8.8 (6.6, 11)	10.1 (5.8, 14.3)	16742
Hispanic and Black	79	6.2 (4.8, 7.5)	6.4(5.7.9)	7.0 (4.7, 9.2)	10616
Integrated	144	3.8 (3.2, 4.4)	4.3(3.6 5)	4.7 (3.4, 6.1)	4395
Region**					
Northeast	97	8.3 (6.7, 9.9)	8.4 (6.8, 10)	9.4 (6.6, 12.3)	9594
South	242	4.1 (3.6, 4.6)	4.1 (3.6, 4.6)	4.9 (4.1, 5.8)	4786
Midwest	43	4 (2.8, 5.2)	4 (2.8, 5.2)	4.2 (2.3, 6)	3891
West	137	3.8 (3.2, 4.5)	3.9 (3.2, 4.5)	4.1 (3.1, 5.2)	4144
ZCTA poverty level ^{###}					
<10	104	3.4 (2.7, 4)	3.6 (2.9, 4.4)	3.5 (2.3, 4.7)	1829
10 to <20%	177	4 (3.4, 4.6)	4.4 (3.7, 5.1)	5.6 (4.3, 7)	4390
20 to <30%	132	4.9 (4.1, 5.7)	5.3 (4.4, 6.3)	5.9 (4.2, 7.5)	6404
≥30%	105	7 (5.7, 8.3)	7.2 (5.8, 8.6)	7.8 (5.5, 10)	11691
ZCTA rural or urban status					
Dense urban	466	4.8 (4.4, 5.2)	5.3 (4.8, 5.8)	6.1 (5.2, 7.0)	5123
Metropolitan	16	1.8 (0.9, 2.7)	1.6 (0.8, 2.4)	1.3 (0.4, 2.3)	825
Micropolitan	19	3.2 (1.8, 4.6)	2.9 (1.5, 4.3)	2.5 (1.0, 4.0)	1101
Small town or rural	17	3.2 (1.7, 4.7)	2.4 (1.3, 3.6)	2.1 (0.7, 3.6)	991
Overall	519	4.4 (4.0, 4.8)	4.7 (4.3, 5.2)	5.4 (4.6, 6.2)	5291

*different at $p < 0.05$, ** different at $p < 0.0001$ for the sample population #Standardized to the U.S. dialysis population using all adults receiving dialysis for the treatment of end stage kidney disease on Jan 1st, 2017 identified through the United States Renal Data System database (N= 499 150). [&]Standardized to the US population using ACS 2018 data ^ΩSeropositivity per 100 000 persons calculated as standardized count/category n X 100 000. *ZCTA Majority defined if population in ZCTA ≥ 60% Hispanic, Non-Hispanic Black, or Non-Hispanic white; if in remainder ZCTAs Hispanic and Black population exceeded ≥60%, ZCTA defined as 'Hispanic and Black', else as 'Other'.

Supplemental Figure 1 Odds of SARS-CoV-2 seroprevalence by neighborhood and patient characteristics in January 2021, with comparison to July 2020



Compared with July data, the differences in seroprevalence by region, population density, and urban-rural status diminished. Persons living in majority Hispanic neighborhoods had higher odds of SARS-CoV-2 seroprevalence compared with persons living in majority white neighborhoods: OR 1.7 (95%CI 1.6, 1.9) in January 2021 versus OR 1.9 (95% CI: 1.5, 2.5) in July 2020. Persons living in majority Non Hispanic Black neighborhoods however had narrower differences in odds of seroprevalence compared with persons living in majority white neighborhoods: OR 1.3 (95% CI: 1.2, 1.6) in January 2021 versus OR 2.8 (95% CI 2.8, 3.9) in July 2020.

The differences by geographic region narrowed. The largest regional difference observed was 1.2 (95% CI: 1.1, 1.3) higher odds of seroprevalence in residents of the South versus West in January 2021, versus in July 2020 there was a 2.3 (1.8, 3.0) higher odds of seroprevalence in residents of the Northeast versus West. Persons living neighborhoods where $\geq 30\%$ of residents had incomes below the federal poverty threshold still higher odds of SARS-CoV-2 seroprevalence: OR 2.0 (95% CI: 1.8, 2.3) in January 2021 versus OR 2.1 (95% CI: 1.6, 2.7) in July 2020.