

Supplementary Appendix

Namulumab or infliximab compared to standard of care in hospitalised patients with COVID-19 (CATALYST): a phase 2 randomised adaptive trial

Benjamin A. Fisher^{1,2,3*}, Tonny Veenith^{4,5*}, Daniel Slade^{3*}, Charlotte Gaskell³, Matthew Rowland⁶, Tony Whitehouse^{4,5}, James Scriven^{7,8}, Dhruv Parekh^{4,5,9}, Madhu S. Balasubramaniam¹⁰, Graham Cooke¹¹, Nick Morley¹², Zoe Gabriel¹³, Matthew P. Wise¹⁴, Joanna Porter¹⁵, Helen McShane¹⁶, Ling-Pei Ho^{17,18}, Philip N. Newsome^{2,19}, Anna Rowe^{2,3}, Rowena Sharpe³, David R. Thickett^{5,9}, Julian Bion^{4,5}, Simon Gates³, Duncan Richards²⁰ and Pamela Kearns^{2,3} on behalf of CATALYST investigators

* These authors have made an equal contribution.

Corresponding authors contact details:

Dr Benjamin A. Fisher, Institute of Inflammation and Ageing, College of Medical and Dental Sciences, University of Birmingham, Birmingham, B15 2TT, UK. Email: b.fisher@bham.ac.uk

Prof. Tonny Veenith, Institute of Inflammation and Ageing, College of Medical and Dental Sciences, University of Birmingham, Birmingham, B15 2TT, UK. Email: t.v.veenith@bham.ac.uk

1. Rheumatology Research Group, Institute of Inflammation and Ageing, College of Medical and Dental Sciences, University of Birmingham, UK
2. National Institute for Health Research (NIHR) Birmingham Biomedical Research Centre, University Hospitals Birmingham NHS Foundation Trust, Birmingham, UK.
3. Cancer Research UK Clinical Trials Unit, Institute of Cancer and Genomic Sciences, University of Birmingham, Birmingham, UK
4. Department of Critical Care Medicine, University Hospitals Birmingham NHS Trust, United Kingdom
5. Birmingham Acute Care Research Group, Institute of Inflammation and Ageing, College of Medical and Dental Sciences, University of Birmingham, UK
6. Kadoorie Centre for Critical Care Research, Nuffield Department of Clinical Neurosciences, University of Oxford, John Radcliffe Hospital, Oxford, UK
7. Department of Infectious Diseases, University Hospitals Birmingham NHS Trust, UK
8. Institute of Microbiology and Infection, University of Birmingham, UK.
9. Department of Respiratory Medicine, University Hospitals Birmingham NHS Trust, UK
10. Department of Critical Care Medicine, Royal Bolton Hospital, Bolton, UK
11. Department of Infectious Disease, Imperial College London, London, UK
12. Department of Haematology, Royal Hallamshire Hospital, Sheffield, UK
13. Sheffield Teaching Hospitals NHS Foundation Trust, Sheffield, UK
14. Department of Critical Care Medicine, University Hospital of Wales, Cardiff, UK
15. Department of Respiratory Medicine, University College Hospital, London, UK
16. The Jenner Institute, University of Oxford, Oxford, UK
17. MRC Human Immunology Unit, Weatherall Institute of Molecular Medicine, University of Oxford, Oxford, UK
18. Oxford Interstitial Lung Disease Service, Oxford University Hospitals NHS Foundation Trust, Oxford, UK
19. Centre for Liver Research, Institute of Immunology and Immunotherapy, University of Birmingham, Birmingham, UK
20. Oxford Clinical Trials Research Unit, Botnar Research Centre, University of Oxford, Oxford, UK

Additional CATALYST Investigators**Data Monitoring Committee**

Member	DMC Role	Contact Information
Professor Adam Hill	Chair	University of Edinburgh
Professor Christina Yap	Independent Statistician	The Institute of Cancer Research, London
Professor Anthony Gordon		Imperial College London

Trial Steering Committee

Member	TSC Role	Contact Information
Professor Michael Matthay	Chair	University of California San Francisco
Professor Danny McAuley	Deputy Chair	Queen's University Belfast
Mr Andrew Hall	Independent Statistician	University of Leeds
Professor Paul Dark		Manchester University
Professor Sir Andrew McMichael		University of Oxford

Scientific Advisory Board

Member		Contact Information
Professor Philip Newsome	Chair	University of Birmingham
Professor Pamela Kearns		University of Birmingham
Professor Tonny Veenith		University of Birmingham
Dr Benjamin Fisher		University of Birmingham
Dr Rowena Sharpe		University of Birmingham
Professor Julian Bion		University of Birmingham
Professor Bryan Williams		University College London
Professor Duncan Richards		University of Oxford
Professor Graham Cooke		Imperial College London
Professor Helen McShane		University of Oxford
Professor Ling-Pei Ho		University of Oxford
Dr Rebecca Turner		University College London
Professor Simon Gates		University of Birmingham
Professor Vincenzo Libri		University College London

Supplementary Table 1 World Health Organisation Clinical Progression Scale

Patient State	Descriptor	Score
Uninfected	Uninfected; no viral RNA detected	0
Ambulatory	Asymptomatic; viral RNA detected	1
	Symptomatic; independent	2
	Symptomatic; assistance needed	3
Hospitalised; mild disease	Hospitalised; no oxygen therapy	4
	Hospitalised; oxygen by mask or nasal prongs	5
Hospitalised; severe disease	Hospitalised; oxygen by NIV or high flow	6
	Intubated and mechanical ventilation, $pO_2/FiO_2 \geq 150$ or $SpO_2/FiO_2 \geq 200$	7
	Mechanical ventilation $pO_2/FiO_2 < 150$ ($SpO_2/FiO_2 < 200$) or vasopressors	8
	Mechanical ventilation $pO_2/FiO_2 < 150$ ($SpO_2/FiO_2 < 200$) and vasopressors, dialysis or ECMO	9
	Dead	10

Adapted from WHO Working Group on the Clinical Characterisation and Management of COVID-19 infection. A minimal common outcome measure set for COVID-19 clinical research. Lancet Infect Dis. 2020;20:e192-e197.

Footnotes for use in CATALYST

1. If pO_2 not available then use the SpO_2/FiO_2 ratio instead
2. For pO_2 measurements in kPa, use an online calculator e.g. https://www.msmanuals.com/en-gb/medical-calculators/PaO2_FiO2Ratio.htm to calculate a pO_2/FiO_2 ratio equivalent to that obtained with pO_2 measured in mmHg, or else consider an equivalent ratio to 200, when dividing pO_2 in kPa by FiO_2 , is 26.7, and an equivalent to 150 is 20.
3. If medically fit for discharge, record status as for ambulatory patient
4. Asymptomatic implies a return to baseline symptomatic state, i.e. no fever, and no cough, shortness of breath, confusion, myalgia, diarrhoea, fatigue, or weakness above what the participant would have experienced on a daily basis before their COVID-19 episode
5. Symptomatic but independent, implies that the participant has some of the additional symptoms as above, but needs no additional help with activities of daily living above what they required prior to their COVID-19 episode.
6. Symptomatic but needs assistance, implies that in addition to having symptoms as above, they require help with activities of daily living i.e. bathing/showering, personal hygiene and combing of hair, dressing, toileting, mobility/transferring and self-feeding, above what they required on a daily basis prior to their COVID-19 episode.
7. Score 0 (uninfected: no viral RNA detected) is not being assessed as part of CATALYST.

Supplementary table 2. Point estimates of the probability of being at each level of the WHO Clinical progression score on days 1, 14 and 28 for ward and ICU patients allocated to usual care alone or namilumab plus usual care. Conditional effects data derived from Bayesian longitudinal proportional odds ordinal regression.

			WHO score level									
	CareStatus	Day	1	2	3	4	5	6	7	8	9	10
Usual Care (Control)	Intensive Care Unit	1	0.00	0.01	0.00	0.01	0.10	0.28	0.23	0.16	0.17	0.04
	Intensive Care Unit	14	0.03	0.13	0.03	0.06	0.22	0.20	0.08	0.05	0.07	0.14
	Intensive Care Unit	28	0.18	0.26	0.03	0.05	0.10	0.09	0.04	0.02	0.03	0.19
	On Ward	1	0.00	0.12	0.04	0.11	0.35	0.27	0.08	0.02	0.01	0.00
	On Ward	14	0.09	0.39	0.05	0.08	0.14	0.08	0.05	0.04	0.04	0.04
	On Ward	28	0.31	0.31	0.02	0.04	0.07	0.04	0.02	0.02	0.03	0.14
Usual Care + Namilumab	Intensive Care Unit	1	0.00	0.01	0.00	0.01	0.10	0.29	0.23	0.16	0.16	0.04
	Intensive Care Unit	14	0.06	0.26	0.04	0.09	0.21	0.12	0.05	0.04	0.07	0.08
	Intensive Care Unit	28	0.34	0.30	0.02	0.03	0.06	0.05	0.02	0.01	0.03	0.13
	On Ward	1	0.00	0.12	0.05	0.12	0.35	0.26	0.07	0.02	0.01	0.00
	On Ward	14	0.18	0.48	0.03	0.05	0.08	0.07	0.04	0.02	0.02	0.03
	On Ward	28	0.54	0.22	0.01	0.02	0.03	0.03	0.03	0.02	0.03	0.07

Supplementary table 3. Point estimates of the probability of being at each level of the WHO Clinical progression score on days 1, 14 and 28 for ward and ICU patients allocated to usual care alone or infliximab plus usual care. Conditional effects data derived from Bayesian longitudinal proportional odds ordinal regression.

			WHO score level									
	Care Status	Day	1	2	3	4	5	6	7	8	9	10
Usual Care (Control)	Intensive Care Unit	1	0.00	0.00	0.00	0.01	0.06	0.21	0.26	0.25	0.14	0.07
	Intensive Care Unit	14	0.03	0.15	0.07	0.08	0.18	0.18	0.09	0.05	0.04	0.14
	Intensive Care Unit	28	0.21	0.28	0.06	0.05	0.07	0.08	0.04	0.02	0.01	0.17
	On Ward	1	0.00	0.09	0.09	0.13	0.28	0.27	0.10	0.02	0.00	0.00
	On Ward	14	0.11	0.42	0.09	0.07	0.09	0.05	0.04	0.05	0.04	0.03
	On Ward	28	0.40	0.28	0.04	0.03	0.04	0.02	0.02	0.02	0.01	0.13
Usual Care + Infliximab	Intensive Care Unit	1	0.00	0.00	0.00	0.01	0.08	0.23	0.26	0.24	0.12	0.05
	Intensive Care Unit	14	0.02	0.12	0.05	0.07	0.18	0.19	0.10	0.07	0.04	0.15
	Intensive Care Unit	28	0.16	0.24	0.06	0.06	0.09	0.09	0.05	0.04	0.02	0.19
	On Ward	1	0.00	0.12	0.10	0.14	0.29	0.25	0.08	0.02	0.00	0.00
	On Ward	14	0.09	0.39	0.10	0.08	0.10	0.07	0.05	0.04	0.04	0.05
	On Ward	28	0.31	0.31	0.05	0.04	0.05	0.04	0.02	0.02	0.02	0.14

Figure 1: Supplementary Figure 1. CRP over time in relation to day 28 outcomes of death, discharge, and ongoing hospitalisation within the whole CATALYST modified intention to treat population.

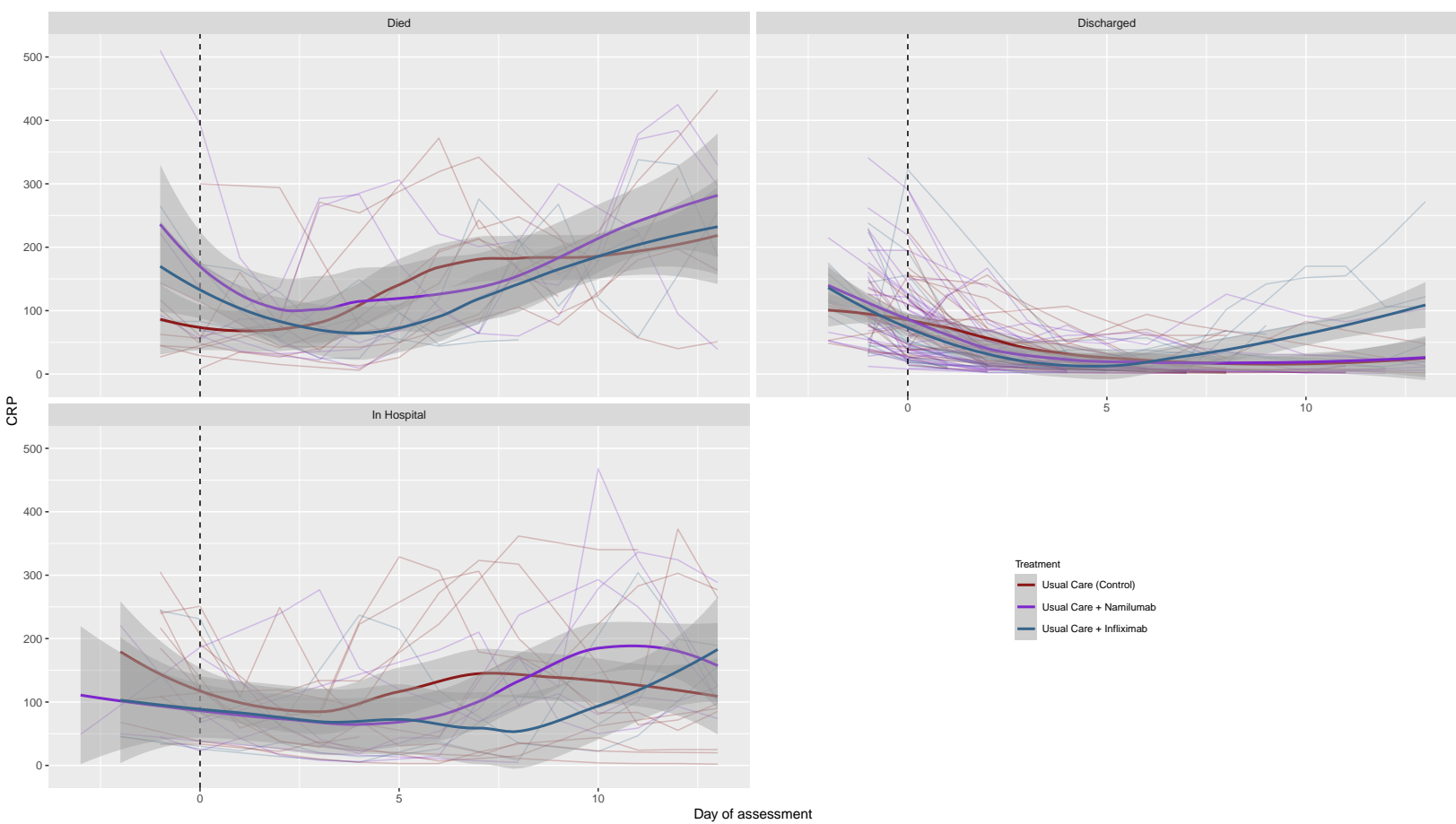
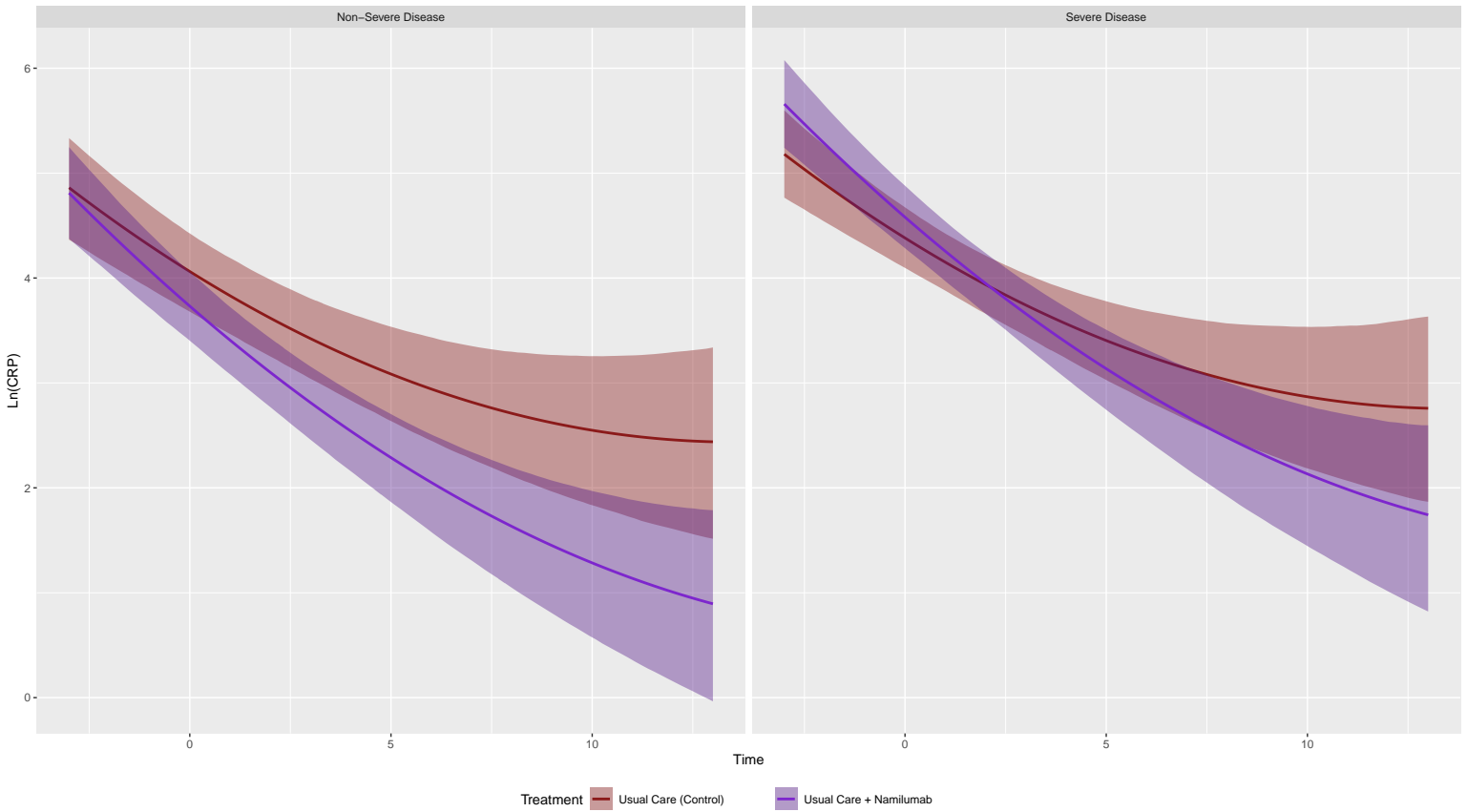
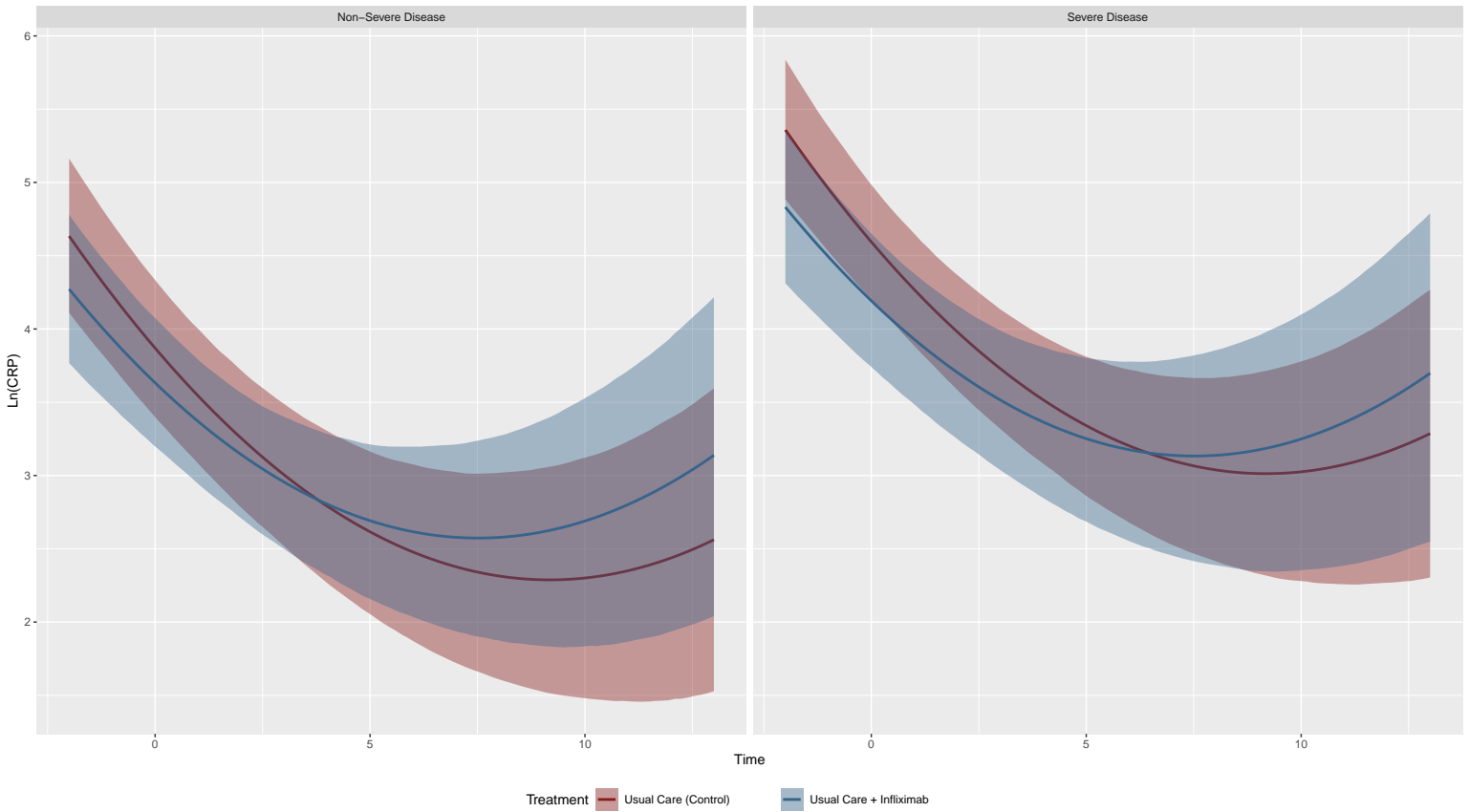


Figure 2: Supplementary Figure 2. Conditional effects plots of CRP modelled over time in patients recruited in with non-severe and severe disease at baseline for namilumab (A) and infliximab (B). Severe disease was defined as the use of non-invasive or invasive ventilation or high flow nasal oxygen at baseline. Time 0 is day 1 of assessment.

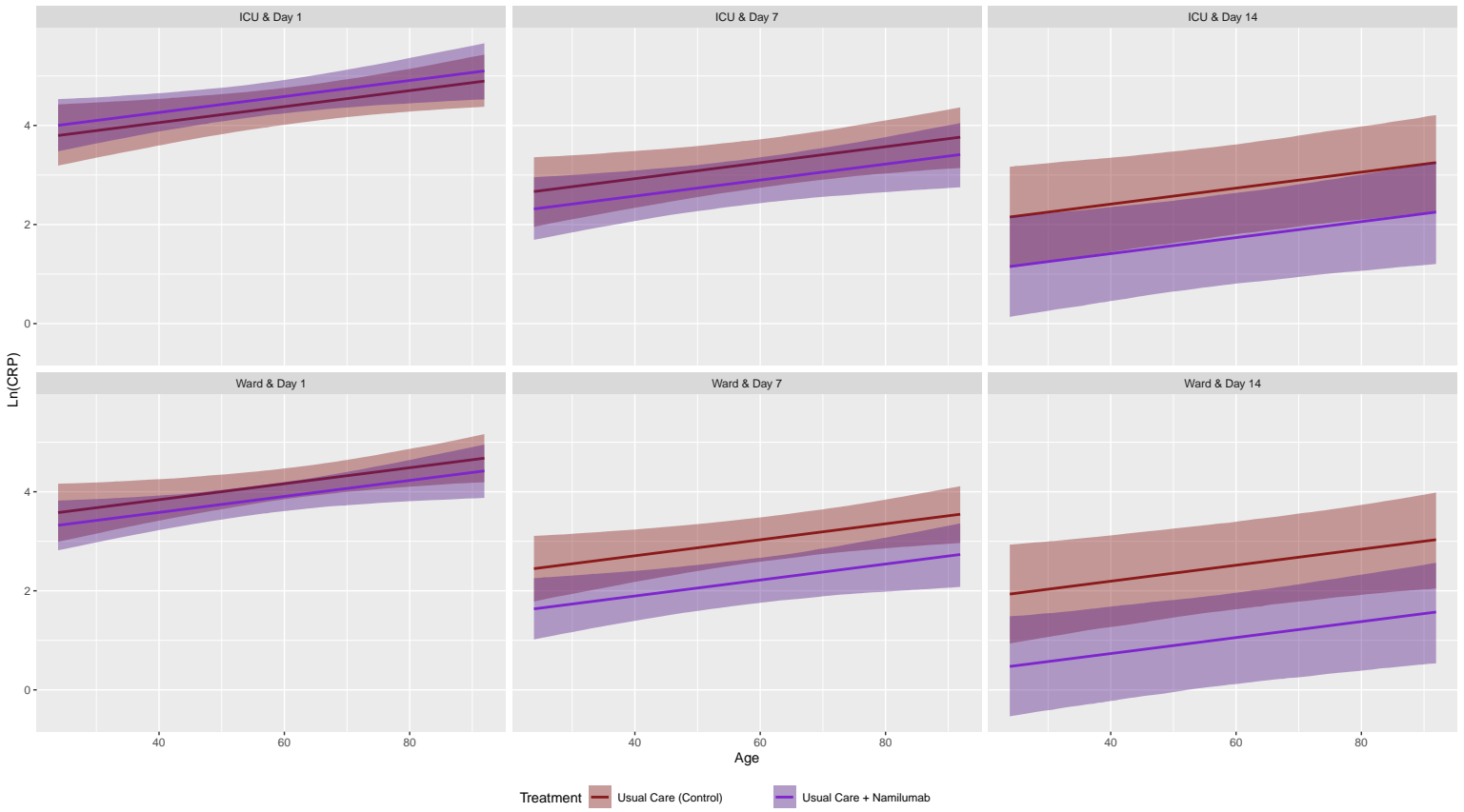


(a)

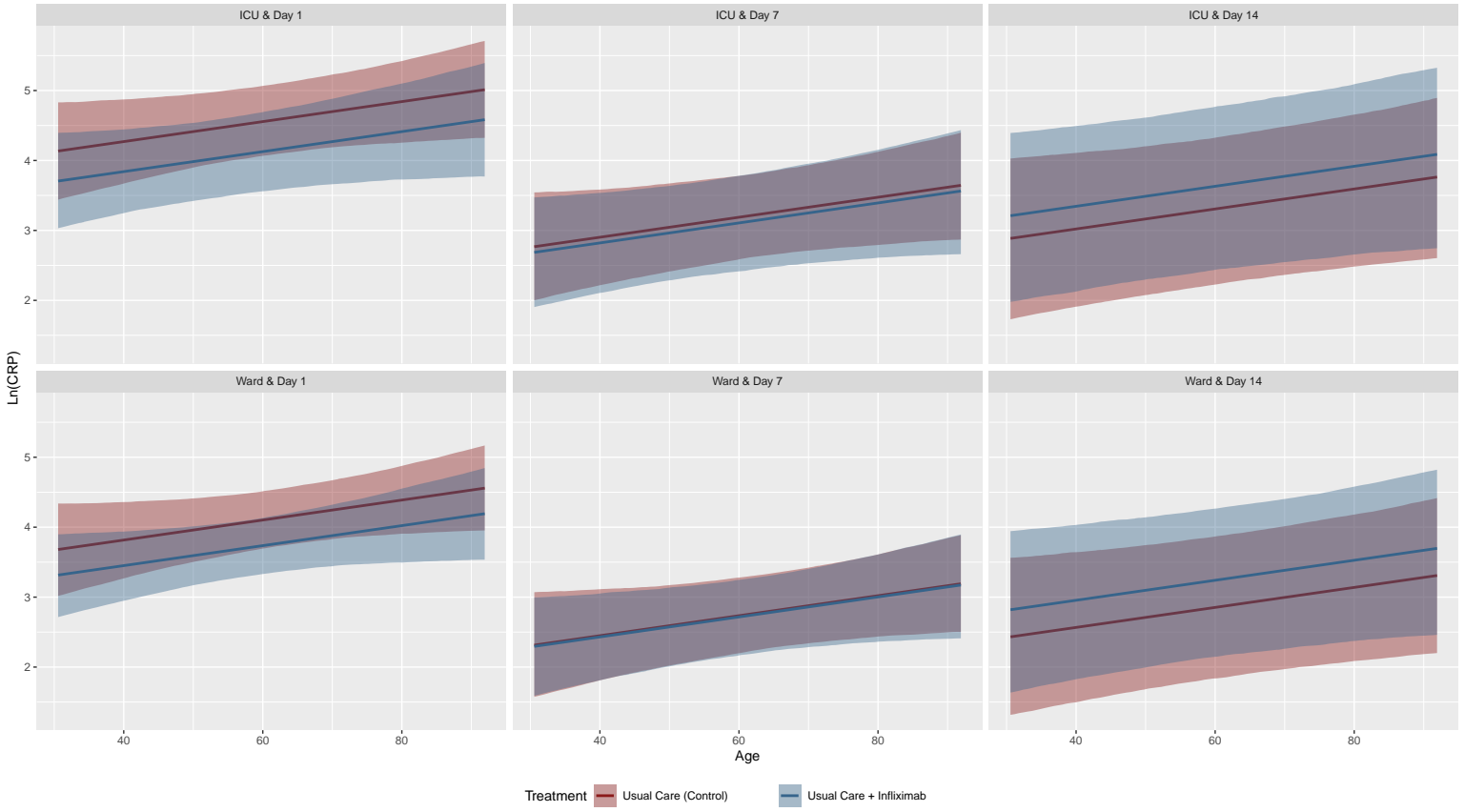


(b)

Figure 3: Supplementary Figure 3. Conditional effects model of CRP in relation to age and treatment at days 0, 7 and 14 in ward and ICU groups. CRP is associated with age but the effect of (A)namilumab (A) and (B) infliximab on CRP is independent of age.

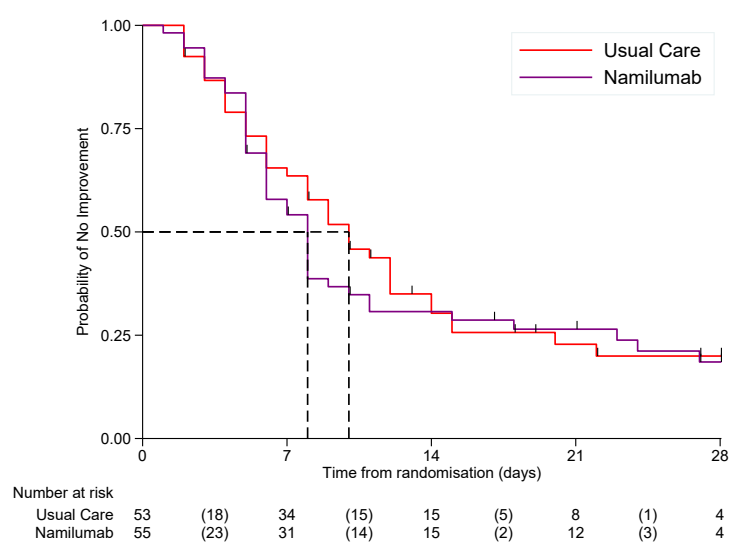


(a)

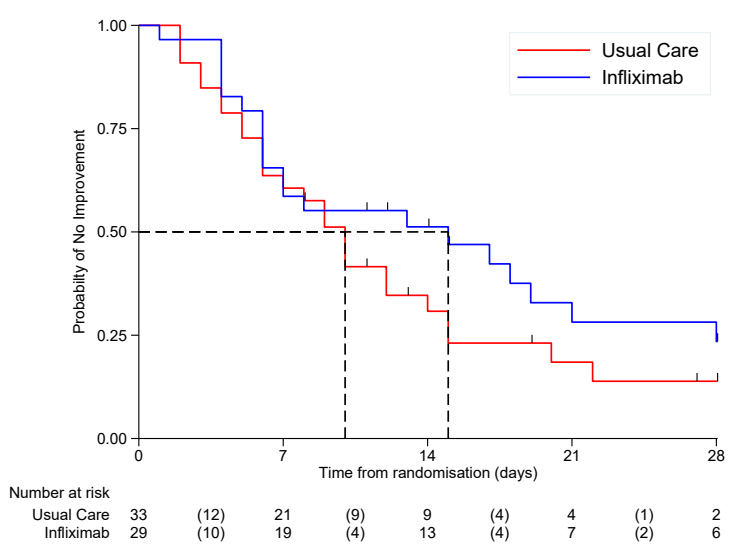


(b)

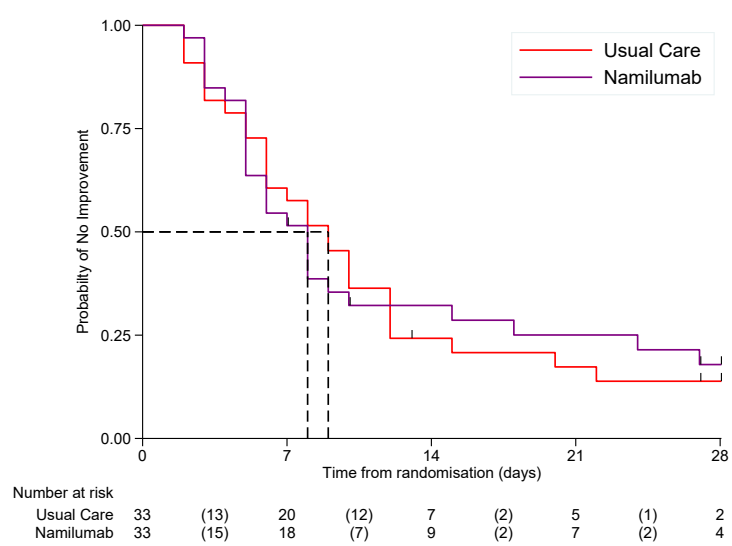
Figure 4: Supplementary Figure 4. Kaplan-Meier plots for time to 2 point improvement for whole population (A, D), ward (B, E) and ICU (C, F) for namilumab (A-C) and infliximab (D-F).



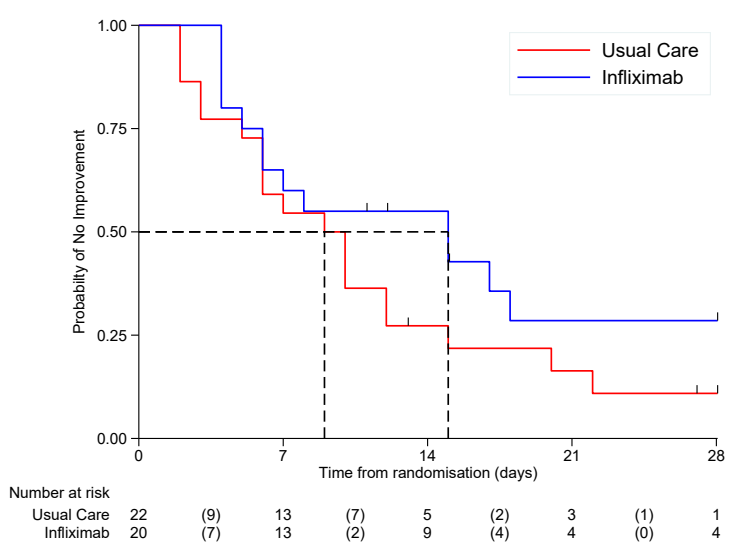
(a)



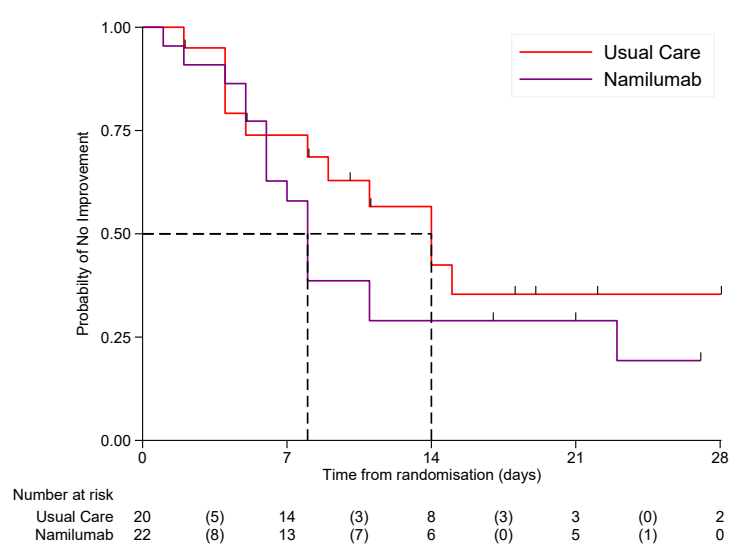
(b)



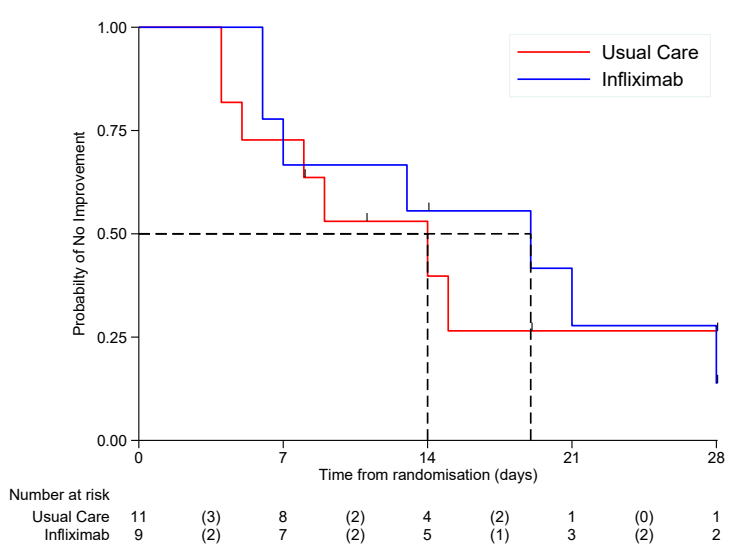
(c)



(d)

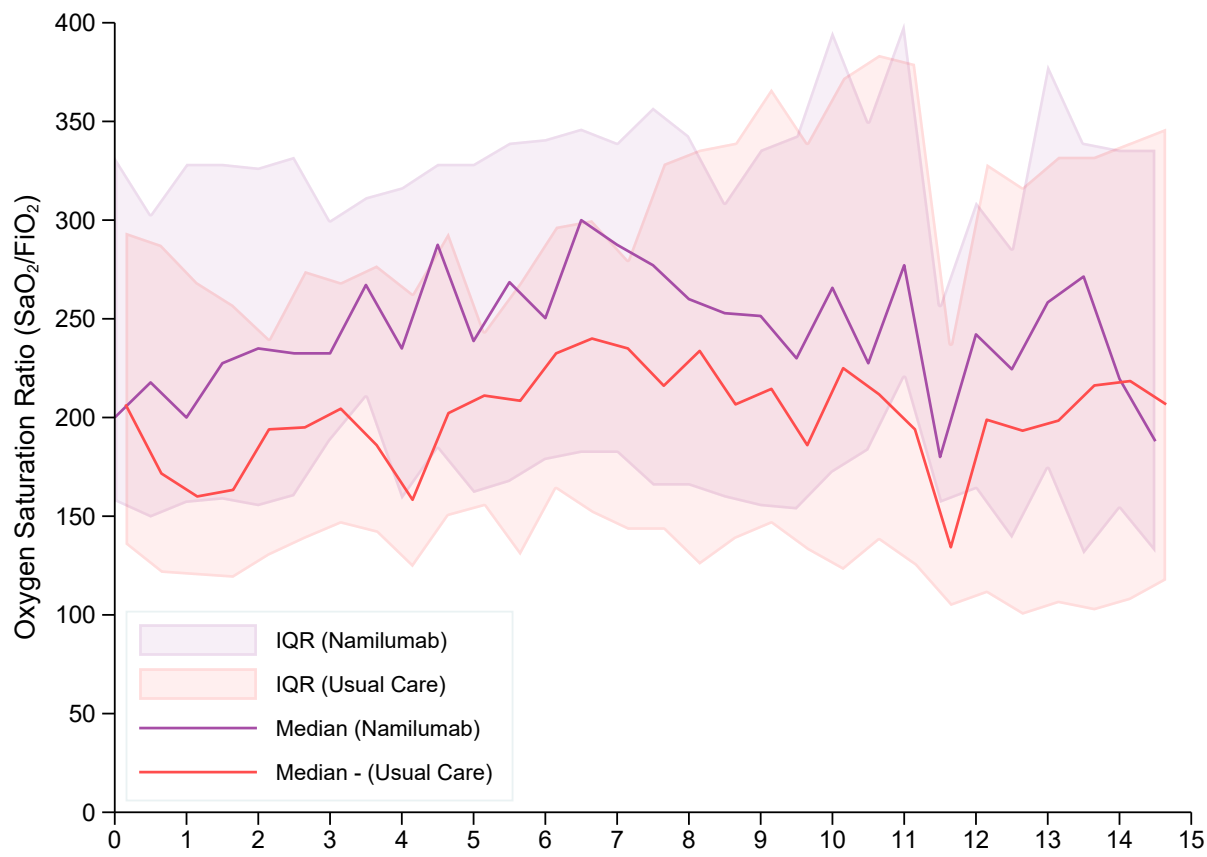


(e)



(f)

Figure 5: Supplementary Figure 5. Median oxygen saturation to fraction of inspired oxygen ratio (SF ratio) over time (days) for (A) namilumab (n=55 namilumab and n=54 usual care) and (B) infliximab (n=34 usual care and n=29 infliximab). Higher values indicate better oxygenation status.



(a)

