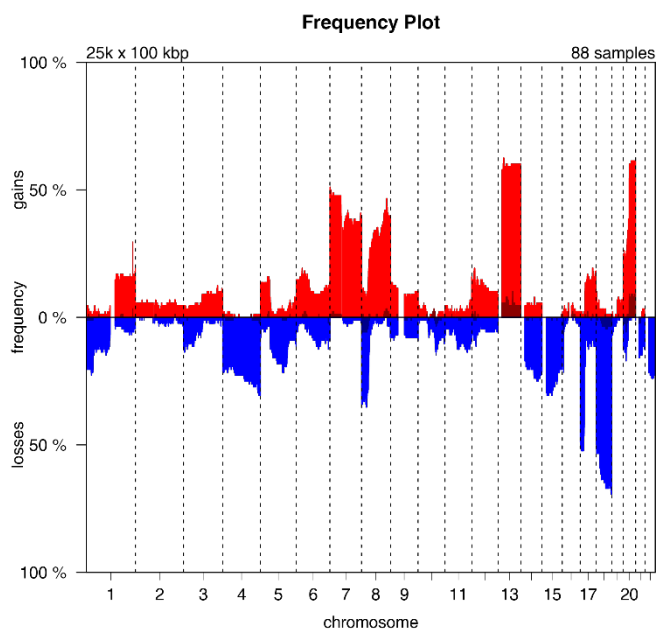
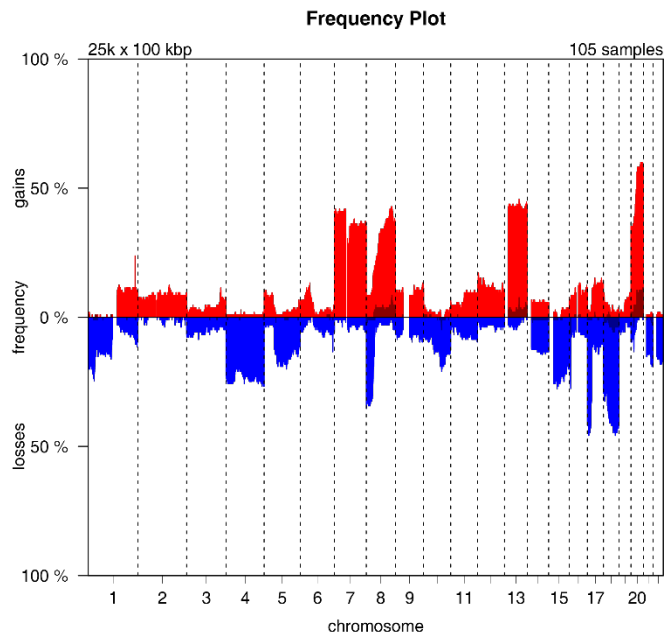


Supplementary data

PCCRCs

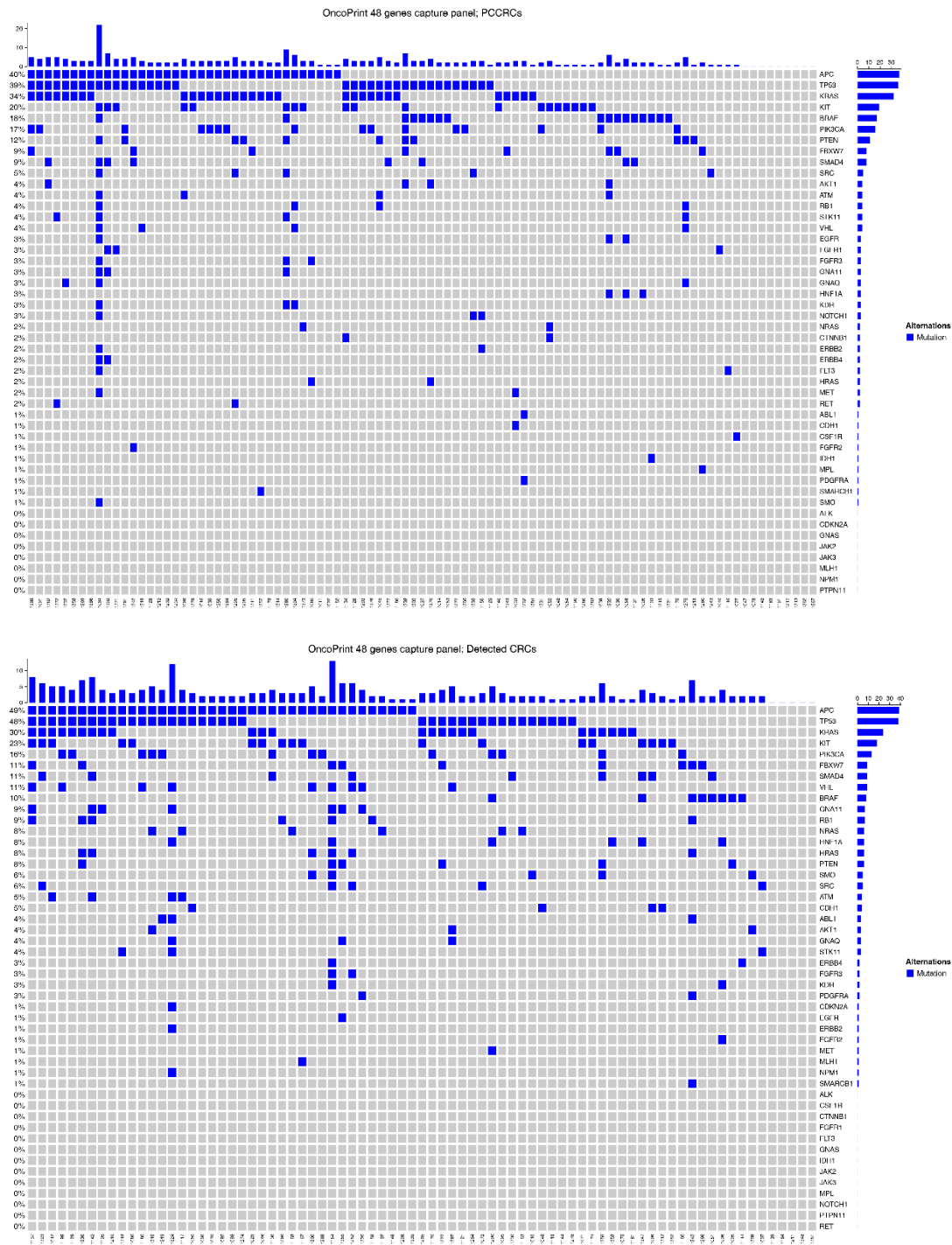


DCRCs



Supplementary Figure 1: PCCRCs and DCRCs frequency plots of DNA copy number gains and losses

throughout the whole genome. Red: gains, blue: losses.



Supplementary Figure 2: Mutation frequencies detected in PCCRCs and DCRs. Oncoprint matrix showing the 48 tested genes (rows) in CRC cases (columns). Blue coloured block: mutations detected; grey coloured block: no mutation detected. Top panel: results of PCCRCs; lower panel: results DCRs.

Supplementary Table 1: Comparison of baseline characteristics between CRC cases with and without missing data. CCA: complete case analysis; *Size is missing in 4 cases.

Characteristic	CCA (n=162)	Imputed cases (n=58)	p-value
PCCRC (%)	89 (54.9)	33 (56.9)	0.918
Mean age in years (SD)	71.0 (10.4)	70.0 (9.7)	0.499
Mean CRC size in cm (SD)	4.07 (1.88)	4.05 (1.99)	0.959
Gender (% male)	93 (57.4)	34 (58.6)	0.996
Location CRC (% proximal)	85 (52.5)	23 (40.4)	0.156
Morphology (% flat)	66 (41.3)	19 (32.8)	0.328
TNM stage (% T1)	18 (11.1)	8 (14.5)	0.662
CRC differentiation (% good/intermediate)	119 (77.8)	39 (79.6)	0.945
Mucinosity (% >50% present)	19 (11.7)	11 (19.0)	0.248

Supplementary Table 2a+b: Comparison of branches of the hierarchical clustering analysis. *Chi-square test used to compare whether PCCRC rates were different between branches. ** Chi-square test used to compare whether the subset biological PCCRC was different among branches.

A)

Branch	PCCRC (55.5%)	Biological PCCRC (42.7%)	Procedural PCCRC (12.7%)	Proximal location	Nonpolypoid
1 (n=50)	31 (62.0%)	24 (48.0%)	7 (14.0%)	31 (62.0%)	24 (49.0%)
2 (n=56)	38 (67.9%)	30 (53.6%)	8 (14.3%)	37 (66.1%)	25 (44.6%)
3 (n=114)	53 (46.5%)	40 (35.1%)	13 (14.3%)	40 (35.4%)	36 (31.9%)
	P=0.018*	P=0.084**		P<0.001*	P=0.073*

B)

Branch	MSI	CIMP high	BRAF	KRAS	13q gain	17p loss	18q loss
1 (n=50)	1 (2.0%)	50 (100%)	10 (25.6%)	13 (33.3%)	30 (63.8%)	21 (44.7%)	33 (70.2%)
2 (n=56)	31 (56.4%)	34 (60.7%)	15 (31.9%)	6 (12.8%)	8 (15.7%)	1 (2.0%)	2 (3.9%)
3 (n=114)	3 (2.7%)	9 (7.9%)	0 (0.0%)	37 (43.0%)	74 (77.9%)	65 (68.4%)	78 (82.1%)