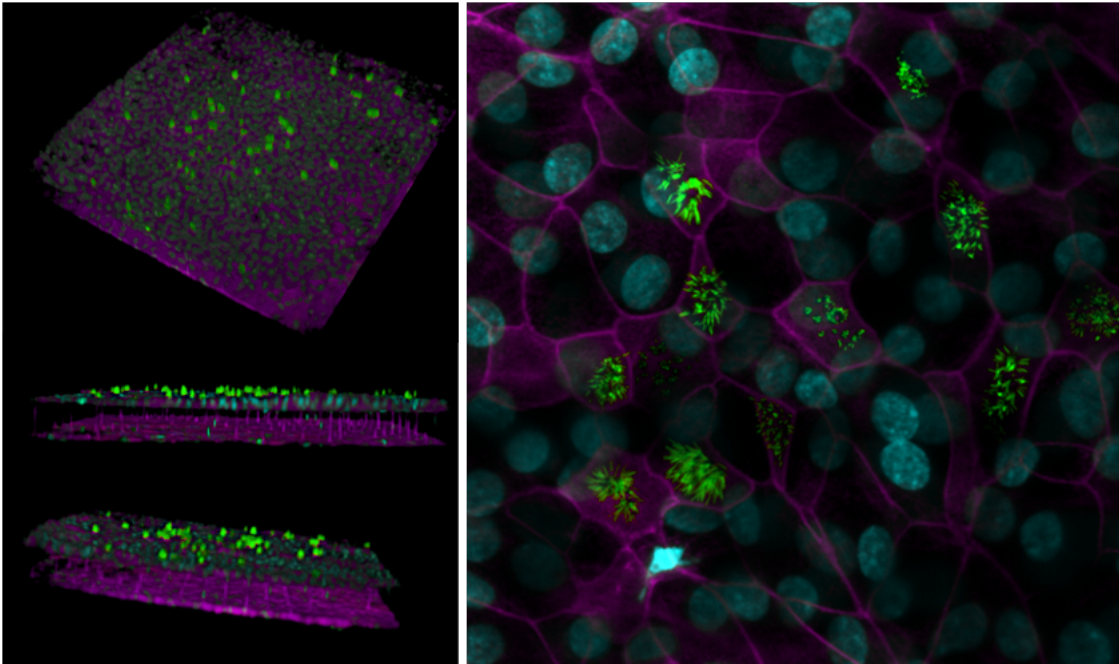


Supplementary Figures



Supplementary Figure S1. Confocal immunofluorescence micrographic 3D reconstruction of the interface between the pseudostratified epithelium and endothelium in the human Airway Chip when viewed from above and the side (left) and a higher magnification view from above of the epithelium stained for β -tubulin IV (green) and ZO-1 (magenta) to show the ciliated epithelial cells cultured on top of the porous PDMS membrane and for CD31 to visualize the endothelium below (bar, 50 μ m).