

Long-term Impact of Prior Secondhand Tobacco Smoke Exposure on Respiratory Health

Fernando Diaz del Valle, MD¹, Jonathan K. Zakrajsek, MS¹, Sung-Joon Min, PhD², Patricia B. Koff, RRT, MEd¹, Harold W. Bell, BS¹, Keegan A. Kincaid, BS¹, Daniel N. Frank, PhD³, Vijay Ramakrishnan, MD⁴, Moumita Ghosh, PhD¹ and R. William Vandivier, MD¹.

¹Division of Pulmonary Sciences and Critical Care Medicine, Colorado Pulmonary Outcomes Research Group (CPOR), ²Division of Healthcare Policy and Research, ³Division of Infectious Diseases, Department of Medicine; and ⁴Division of Otolaryngology, Department of Surgery, University of Colorado Denver Anschutz Medical Campus, Aurora CO 80014.

Contents of Online Supplement

Supplement Table 1. Univariable and Multivariable Analysis for Total SGRQ

Supplement Table 2. Demographics of the Never Smoker Cohort

Supplement Figure 1. Impact of Secondhand Tobacco Smoke (SHS) Exposure on General Quality of Life and Lung Function in the Total Cohort.

Supplement Figure 2. Impact of Secondhand Tobacco Smoke (SHS) Exposure on Respiratory Health in the Never Smoker Cohort.

Supplement Figure 3. Impact of Secondhand Tobacco Smoke (SHS) Exposure on General Quality of Life and Lung Function in the Never Smoker Cohort.

Supplement Figure 4. Synergistic Interaction Between Secondhand Tobacco Smoke (SHS) Exposure and Former Smoking in the Total Cohort.

Supplement Figure 5. Impact of Symptoms on Lung Function in the Secondhand Tobacco Smoke (SHS) Exposed, Preserved Lung Function Cohort.

Supplement Figure 6. Impact of Symptoms on Sinonasal Airway Inflammatory and Ciliated Cells in the Secondhand Tobacco Smoke (SHS) Exposed, Preserved Lung Function Cohort.

Supplement Table 1. Univariable and Multivariable Analysis for Total SGRQ

| Quantile Regression (Median) for Total SGRQ | | | | | | | |
|--|-------------|-----------------|----------------|--------------------------------------|-------------|---------------|----------------|
| Univariable Analysis | | | | Multiple Regression Analysis | | | |
| Variable | Beta | 95% CI | P-Value | Variable | Beta | 95% CI | P-Value |
| Airline Work | 6.7 | 2.7, 10.7 | 0.001 | Airline Work | 6.5 | 3.7, 9.2 | <0.001 |
| SHS- Exposure | | | | SHS- Exposure | | | |
| Age | 0.4 | 0.1, 0.7 | 0.003 | Age | | | NS |
| Female | 1.2 | -4.1, 6.6 | 0.65 | Female | | | NS |
| BMI | 0.8 | 0.3, 1.3 | <0.001 | BMI | 0.8 | 0.5, 1.1 | <0.001 |
| Parental | 2.6 | -1.1, 6.4 | 0.17 | Parental | 2.7 | 0.3, 5.1 | 0.03 |
| Smoking During Pregnancy | | | | Smoking During Pregnancy | | | |
| Non-Airline Work SHS- Exposure | 0.1 | -0.0009, 0.3 | 0.07 | Non-Airline Work SHS- Exposure | | | NS |
| Workplace VGDF- Exposure | 0.04 | -0.1, 0.1 | 0.53 | Workplace VGDF- Exposure | | | NS |
| HTN | 1.1 | -4.0, 6.2 | 0.67 | HTN | | | NS |

Definition of abbreviations: SGRQ = St. George's Respiratory Questionnaire, CI = confidence interval, SHS = secondhand cigarette smoke, BMI = body mass index, VGDF = (self-reported exposure to) vapors, gases, dusts or fumes, HTN = hypertension, NS = non-significant.

Supplement Table 2. Demographics of the Never Smokers in the Total Cohort*

| Characteristics | SHS Exposed N=131 | SHS Unexposed N=42 | P-value[†] |
|--|------------------------------|-------------------------------|----------------------------|
| Age, y | 66.0 (7.2) | 63.0 (7.6) | 0.02 |
| Gender, n (%) female | 118 (90.1) | 32 (76.2) | 0.02 |
| Race/Ethnicity | | | |
| White, n (%) | 113 (95.8) | 38 (92.7) | 0.43 |
| Black, n (%) | 0 (0) | 0 (0) | |
| Asian, n (%) | 2 (1.7) | 0 (0) | |
| Hispanic, n (%) | 2 (1.7) | 2 (4.9) | |
| Native Hawaiian or Pacific Islander, n (%) | 0 (0) | 0 (0) | |
| Multirace, n (%) | 1 (0.9) | 1 (2.4) | |
| BMI, units | 25.2 (4.1) | 26.4 (4.5) | 0.11 |
| Resting SpO ₂ , % | 95.7 (2.1) | 95.6 (1.9) | 0.74 |
| Flight Attendant History | | | |
| Age of Hire, y | 24.0 (4.7) | NA | NA |
| Total Flying Years, y | 29.1 (14.4) | NA | NA |
| Years Elapsed Since SHS-Exposure, y | 27.4 (9.5) | NA | NA |
| SHS and VGDF Exposure History | | | |
| Prenatal SHS Exposure | | | 0.31 |
| Only Mother Smoked, n (%) | 6 (4.6) | 2 (4.8) | |
| Only Father Smoked, n (%) | 37 (28.2) | 14 (33.3) | |
| Both Parents Smoked, n (%) | 30 (22.9) | 14 (33.3) | |
| Neither Parent Smoked, n (%) | 58 (44.3) | 12 (28.6) | |
| Parental Smoking During Pregnancy, n (%) | 73 (55.7) | 30 (71.4) | 0.07 |
| Home SHS Exposure, y | 13.2 (11.2) | 13.5 (8.9) | 0.88 |
| Median [IQR] | 17 [0, 20] | 18 [0, 19] | 0.95 |
| Airline Work SHS Exposure, y | 15.3 (9.3) | NA | NA |
| Non-Airline Work SHS Exposure, y | 4.5 (7.8) | 18.5 (16.8) | <0.001 |
| Median [IQR] | 1 [0, 5] | 19.5 [0, 37] | <0.001 |
| Workplace VGDF Exposure, y | 10.4 (15.7) | 3.3 (7.8) | <0.001 |
| Median [IQR] | 0 [0, 26] | 0 [0, 0] | 0.03 |
| Comorbidities | | | |
| HTN, n (%) | 36 (27.5) | 11 (26.2) | 0.87 |
| CHF, n (%) | 0 (0) | 1 (2.4) | 0.24 |
| CAD, n (%) | 4 (3.1) | 1 (2.4) | >0.99 |
| DM, n (%) | 2 (1.5) | 4 (9.5) | 0.03 |
| High Cholesterol, n (%) | 39 (29.8) | 9 (21.4) | 0.29 |
| Chronic Bronchitis, n (%) | 6 (4.6) | 2 (4.8) | >0.99 |
| Emphysema, n (%) | 1 (0.8) | 1 (2.4) | 0.43 |
| Asthma, n (%) | 12 (9.2) | 6 (14.3) | 0.34 |
| Sinus Problems, n (%) | 43 (32.8) | 10 (23.8) | 0.27 |
| Ear Infections, n (%) | 13 (9.9) | 2 (4.8) | 0.53 |
| Osteopenia/Osteoporosis, n (%) | 24 (18.3) | 6 (14.3) | 0.55 |
| Sleep Apnea, n (%) | 11 (8.4) | 5 (11.9) | 0.49 |
| Depression, n (%) | 19 (14.5) | 9 (21.4) | 0.29 |
| Anxiety, n (%) | 20 (15.3) | 9 (21.4) | 0.35 |
| Thyroid Disease, n (%) | 25 (19.1) | 10 (23.8) | 0.51 |
| Skin Cancer, n (%) | 15 (11.5) | 3 (7.1) | 0.57 |

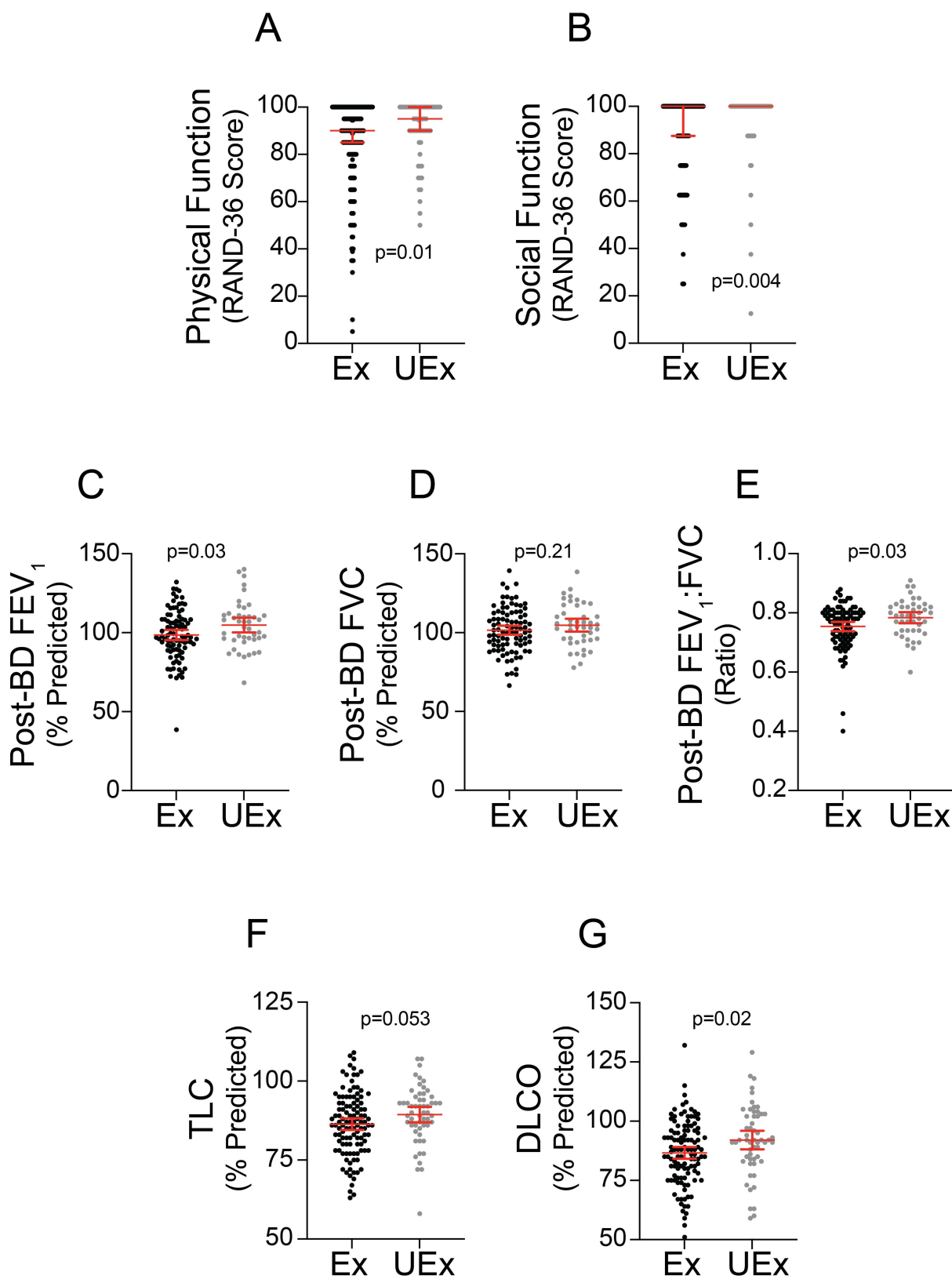
| | | | |
|------------------------------|-----------|---------|------|
| Total Non-skin Cancer, n (%) | 20 (15.3) | 3 (7.1) | 0.29 |
|------------------------------|-----------|---------|------|

*Data are presented as mean (SD) unless otherwise stated. Percentages may not total 100% due to rounding. There were no missing data, except 8% for race/ethnicity.

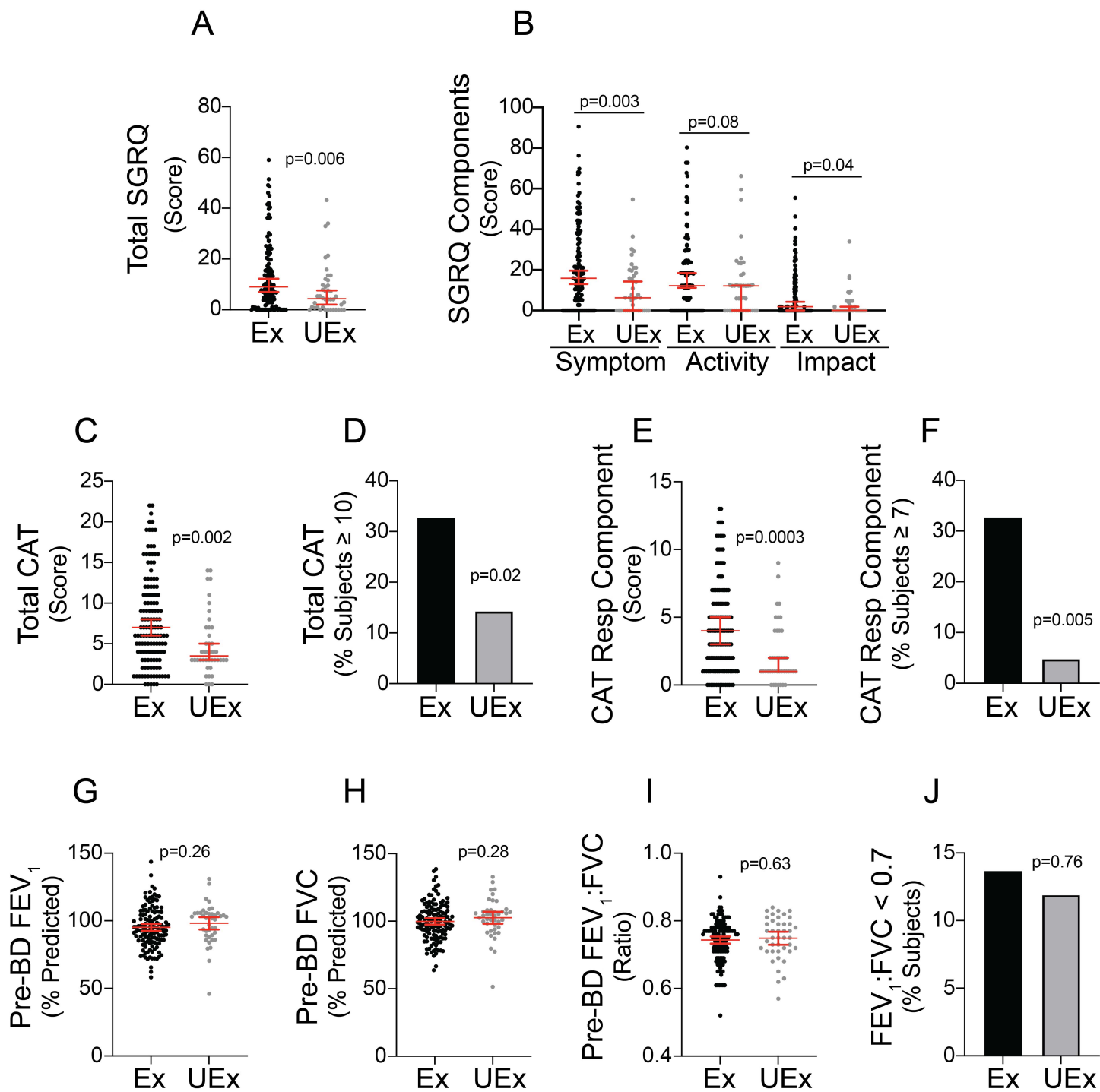
Definition of abbreviations: SHS = secondhand cigarette smoke, BMI = body mass index, IQR = interquartile range, SpO₂% = peripheral blood oxygen saturation, VGDF = (self-reported exposure to) vapors, gases, dusts or fumes, HTN = hypertension, CHF = congestive heart failure and CAD = coronary artery disease, DM = diabetes mellitus

[†]T-tests (or Mann-Whitney tests) were used for continuous variables and chi-square tests (or Fisher's exact tests) were used for categorical variables.

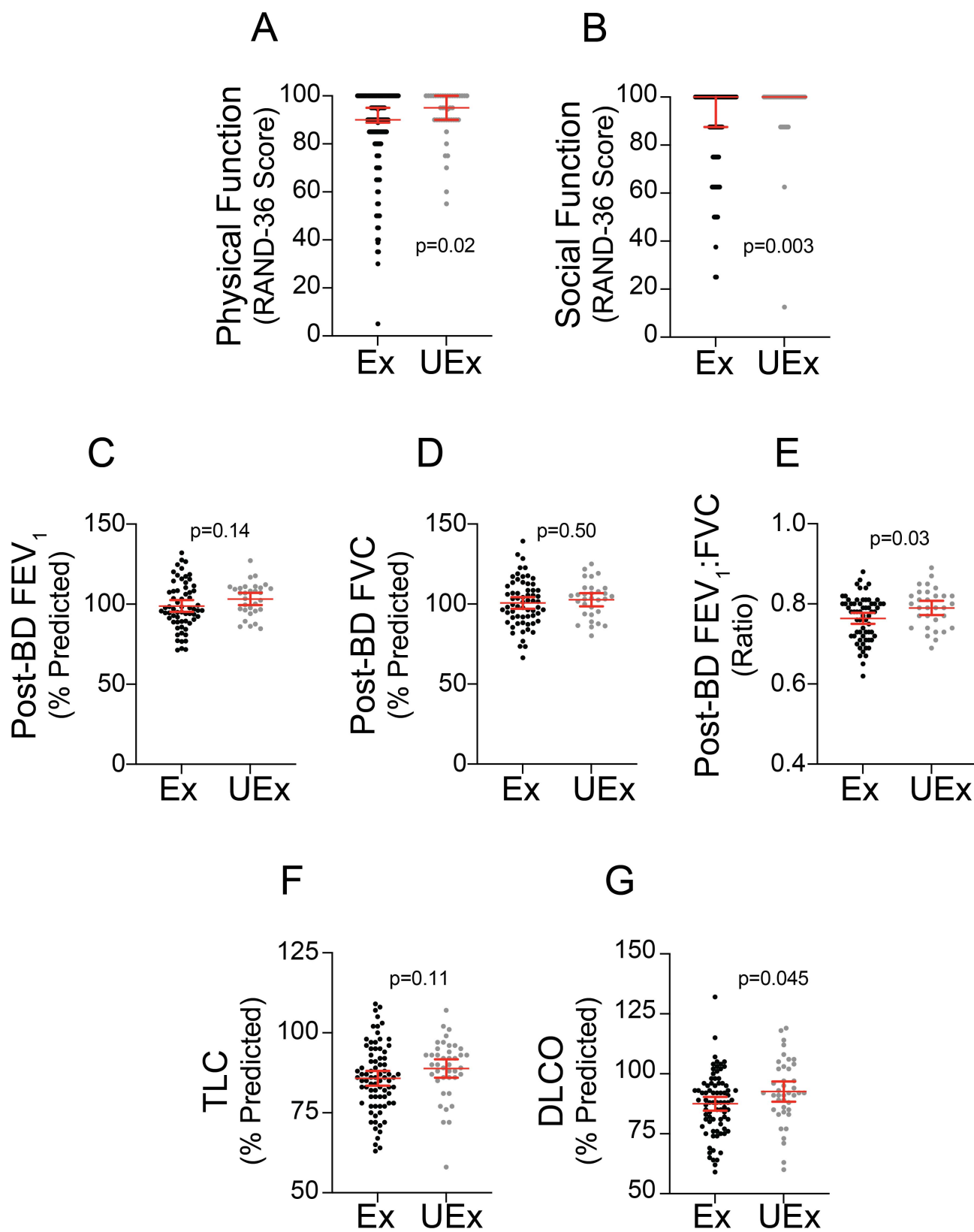
Supplement Figure 1



Supplement Figure 2

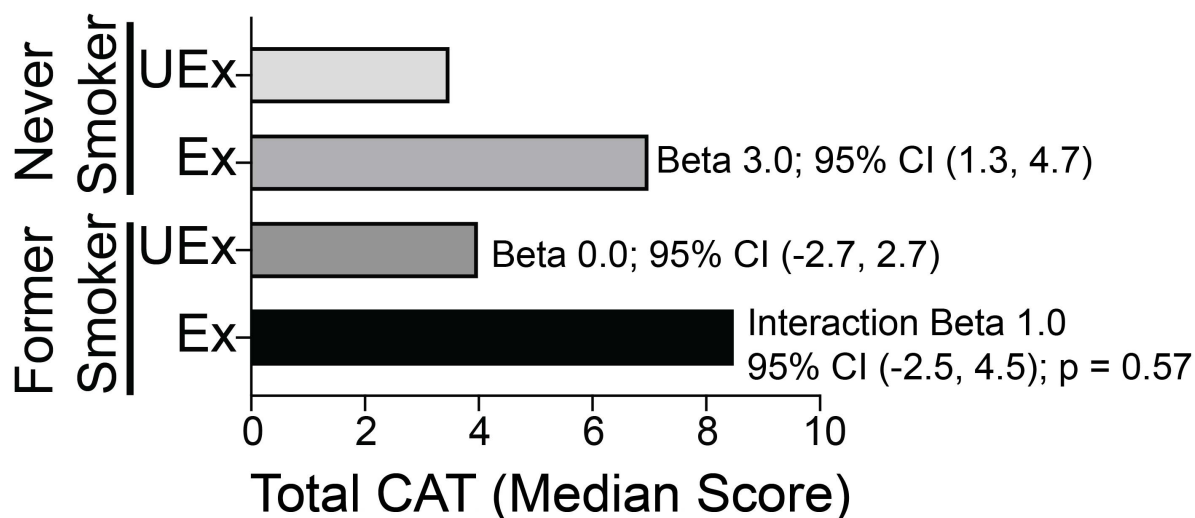


Supplement Figure 3

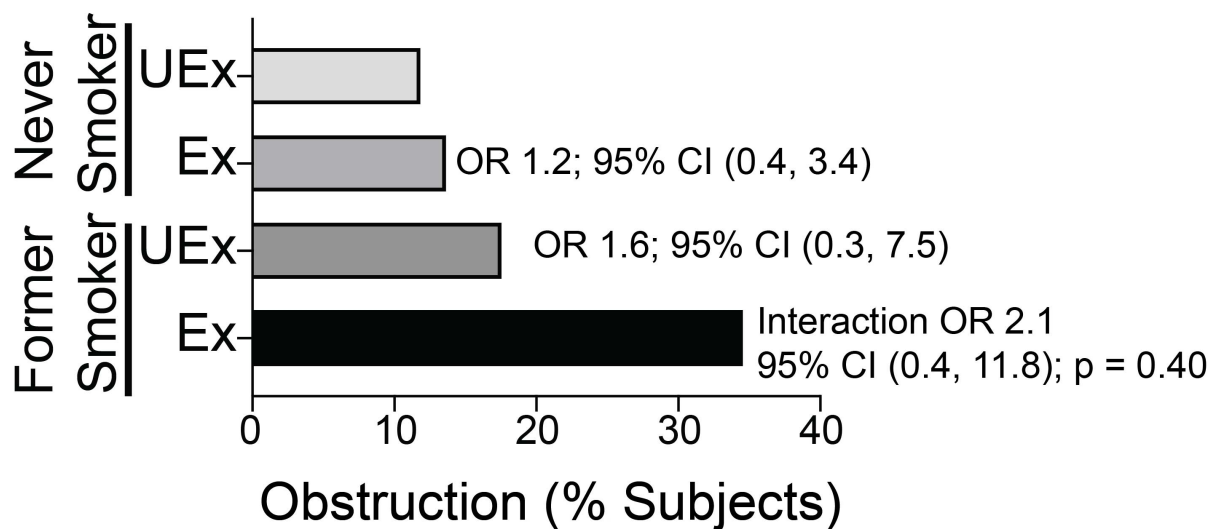


Supplement Figure 4

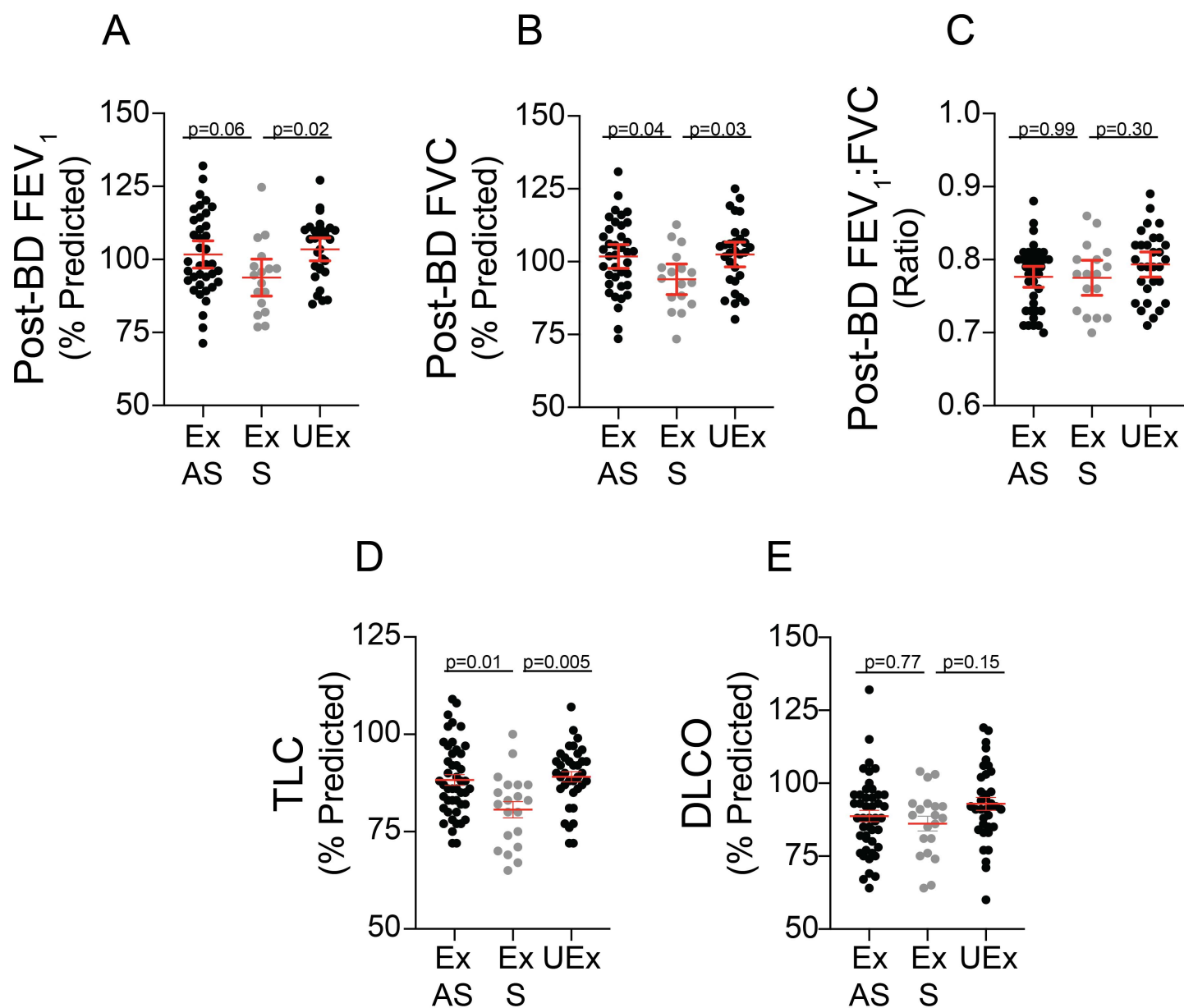
A



B



Supplement Figure 5



Supplement Figure 6

A Nasal Brushing

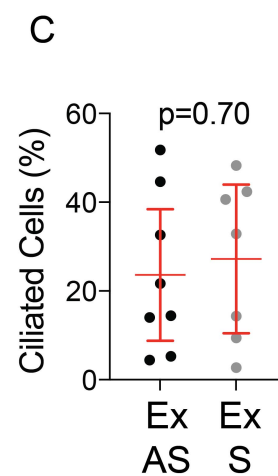
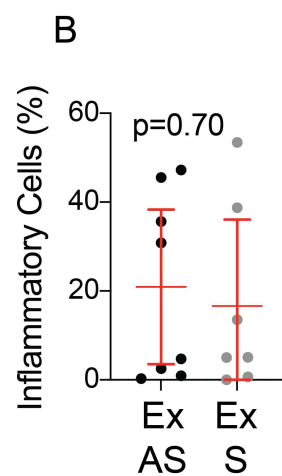
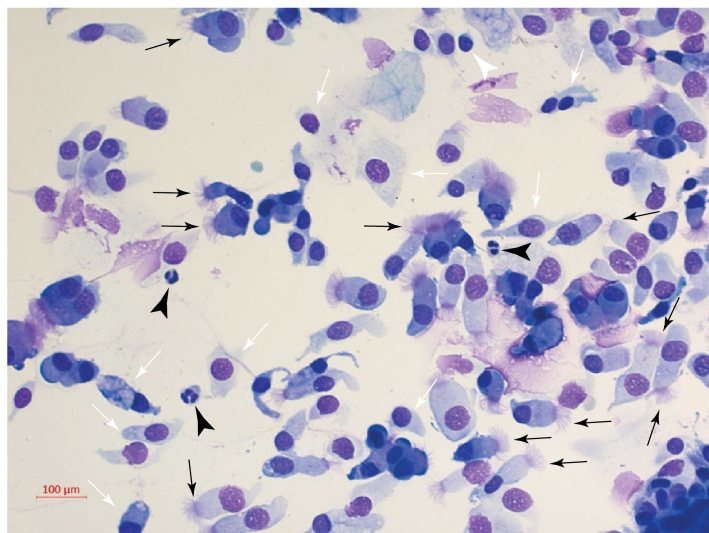


FIGURE LEGENDS

Supplement Figure 1. Impact of Secondhand Tobacco Smoke (SHS) Exposure on General Quality of Life and Lung Function in the Total Cohort. The study examined differences in SHS-exposed (Ex; N=183) *versus* unexposed (UEx; N=59) subjects for the A) physical function and B) social function components of the RAND Corporation modification of the short form (SF)-36 questionnaire (RAND-36), post-bronchodilator (post-BD) C) FEV₁, D) FVC, and E) FEV₁:FVC ratio, F) total lung capacity (TLC), and G) lung diffusion of carbon monoxide (DLCO). P-values indicate results of a Mann-Whitney test for A-B, and data are shown as median and 95% CI. P-values indicate results of a t-test for C-G, and data are shown as mean and 95% CI.

Supplement Figure 2. Impact of Secondhand Tobacco Smoke (SHS) Exposure on Respiratory Health in the Never Smoker Cohort. The study examined differences in SHS-exposed (Ex; N=131) *versus* unexposed (UEx; N=42) never smokers for A) total St. George's Respiratory Questionnaire (SGRQ), B) symptom, activity and impact components of the SGRQ, C) total COPD Assessment Test (CAT), D) CAT ≥ 10 , E) CAT Respiratory (Resp) Component, F) CAT Resp Component ≥ 7 , pre-bronchodilator (pre-BD) G) FEV₁, H) FVC, and I) FEV₁:FVC ratio, and J) obstruction defined by an FEV₁:FVC ratio < 0.7 using post-BD measurements where available. P-values indicate results of a Mann-Whitney test for A-C and E, and data are shown as median and 95% CI. P-values indicate results of a t-test for G-I, and data are shown as mean and 95% CI. P-values indicate results of a Fisher's exact test for D, F and J.

Supplement Figure 3. Impact of Secondhand Tobacco Smoke (SHS) Exposure on General Quality of Life and Lung Function in the Never Smoker Cohort. The study examined differences in SHS-exposed (Ex; N=131) *versus* unexposed (UEx; N=42) never-smokers for the A) physical function and B) social function components of the RAND Corporation modification of the short form (SF)-36 questionnaire (RAND-36), post-bronchodilator (post-BD) C) FEV₁, D) FVC, and E) FEV₁:FVC ratio, and F) total lung capacity (TLC), and G) lung diffusion of carbon monoxide (DLCO). P-values

indicate results of a Mann-Whitney test for A-B, and data are shown as median and 95% CI. P-values indicate results of a t-test for C-G, and data are shown as mean and 95% CI.

Supplement Figure 4. Synergistic Interaction Between Secondhand Tobacco Smoke (SHS)

Exposure and Former Smoking in the Total Cohort. The study examined whether SHS-exposure (Ex) and former smoking interacted in a synergistic way compared to unexposed (UEx) never smokers for A) total COPD Assessment Test (CAT) and B) obstruction defined by an FEV₁:FVC ratio < 0.7 using post-bronchodilator measurements where available. Beta or Odds Ratio (OR) and 95% CI indicate the main and interaction effects of Ex and former smoking using quantile regression for A, and logistic regression for B.

Supplement Figure 5. Impact of Symptoms on Lung Function in the Secondhand Tobacco

Smoke (SHS) Exposed, Preserved Lung Function Cohort. The study examined the impact of symptoms in secondhand tobacco smoke (SHS) exposed (Ex), never-smokers with preserved lung function. Symptomatic (S; CAT ≥ 10) SHS-subjects with preserved lung function (N=36) were compared to asymptomatic (AS; CAT < 10) SHS-exposed subjects (N=74) and to unexposed (UEx) never-smokers with preserved lung function (N=36) for post-bronchodilator (post-BD) A) FEV₁, B) FVC, and C) FEV₁:FVC ratio, D) total lung capacity (TLC), and E) lung diffusion of carbon monoxide (DLCO). Differences were assessed using a one-way ANOVA for A-E, which resulted in a p < 0.05 for A, B and D. P-values indicate results of a Dunnett's test and data are shown as mean and 95% CI.

Supplement Figure 6. Impact of Symptoms on Sinonasal Airway Inflammatory and Ciliated Cells in the Secondhand Tobacco Smoke (SHS) Exposed, Preserved Lung Function Cohort.

Panel A shows a representative Diff-Quick-stained cytospin of a nasal brushing demonstrating the presence of ciliated (black arrows) and non-ciliated (white arrows) epithelial cells, neutrophils (black arrowheads) and lymphocytes (white arrowheads). Panels B and C show differences in B) inflammatory cells (neutrophils and lymphocytes) and C) ciliated cells in symptomatic (S; CAT ≥ 10) and asymptomatic (AS; CAT < 10) secondhand tobacco smoke exposed (Ex), never-smokers with

preserved lung function. P-values indicate results of t-tests for panels B and C, where data are shown as mean and 95% CI.