

Robotic-Assisted Gait for lower-limb Rehabilitation: Evidence of Altered Neural Mechanisms in Stroke

Juan Manuel Mayor-Torres, Ben O'Callaghan, Attila Korik, Alessandra Del Felice, *Member, IEEE*, Damien Coyle, *Member, IEEE*, Sean Murphy, and Olive Lennon

SUPPLEMENTARY MATERIAL

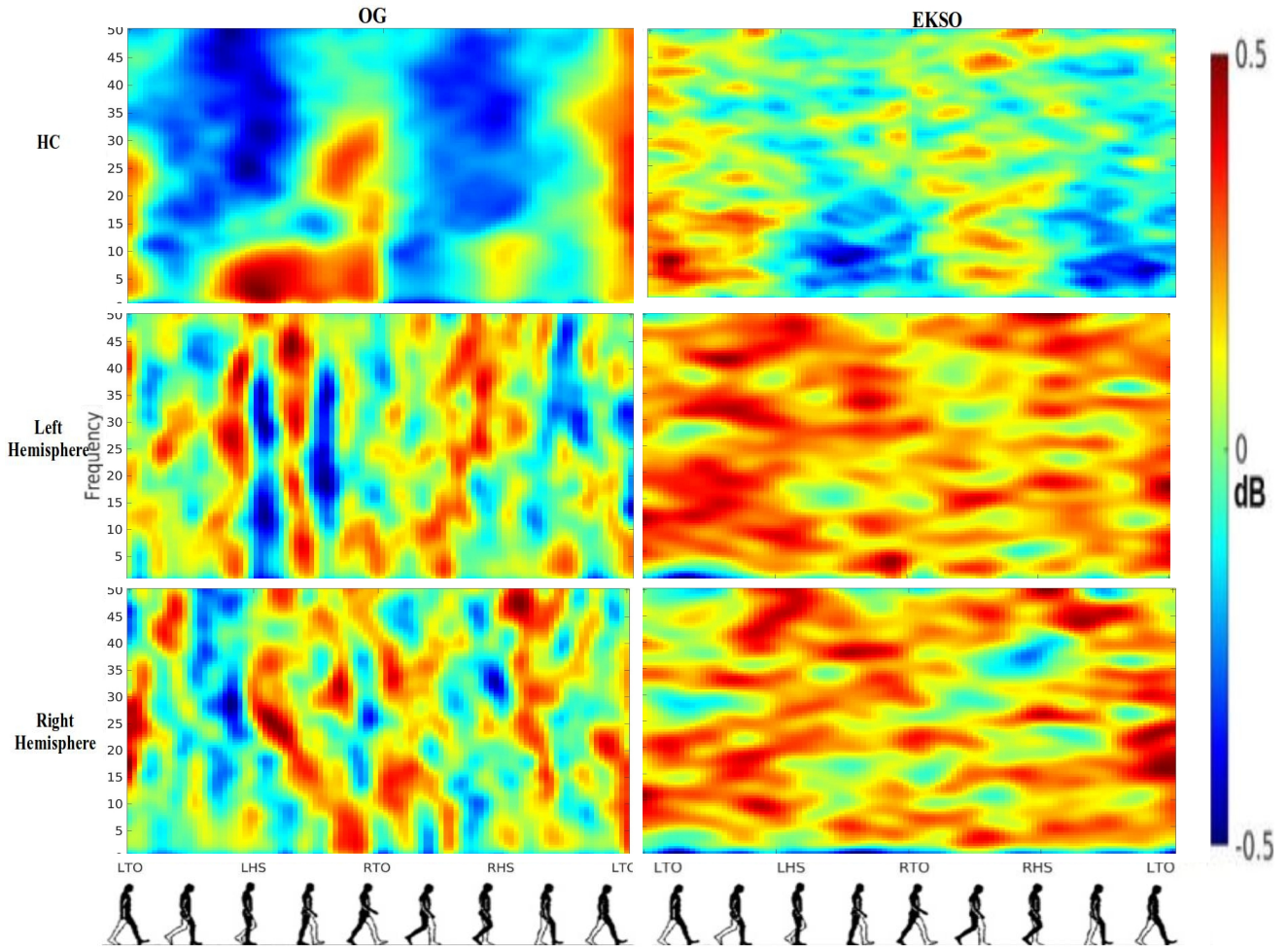


Fig S 1: Average ERSP output for the C4 channel. This Figure shows in rows the groups - healthy-controls (HC), and Stroke Patients (ST) Left Stroke side and Right Stroke side, and in columns the gait-evaluation modalities OG and Ekso. Each plot has in y-axis frequency between 0-50Hz, and in x-axis all the gait-phases of the gait-cycle. Red spots represent synchronization and darker blue spots represent desynchronization. The level of sync-desync is defined in the colorbar between [-0.5,0.5] dB and plotted based on the jet colormap. Knaepen et al. [1] suggested. Red and pink spots represent a comparison between HC and ST groups on the same walking condition i.e., OG or Ekso.

Juan Manuel Mayor-Torres is at School of Public Health, Physiotherapy and Sports Science at University College Dublin, Belfield, Dublin, email: juan.mayortorres@ucd.ie**, Ben O'Callaghan is at School of Public Health, Physiotherapy and Sports Science at University College Dublin, Belfield, Dublin, email: ben.o-callaghan@ucdconnect.ie. Attila Korik is at School of Computing, Engineering and Intelligent Systems at Ulster University, email: a.korik@ulster.ac.uk, Alessandra Del Felice is the head of Neurophysiology and Movement Rehabilitation group and at Padova Neuroscience Center (PNC) at University of Padova, email: alessandra.delfelice@unipd.it, Damien Coyle is at School of Computing, Engineering and Intelligent Systems at Ulster University, email: d.coyle@ulster.ac.uk, Sean Murphy is at Mater Misericordiae Hospital, Dublin, email: seanmurphy@mater.ie, Olive Lennon is at School of Public Health, Physiotherapy and Sports Science at University College Dublin, Belfield, Dublin, email: olive.lennon@ucd.ie

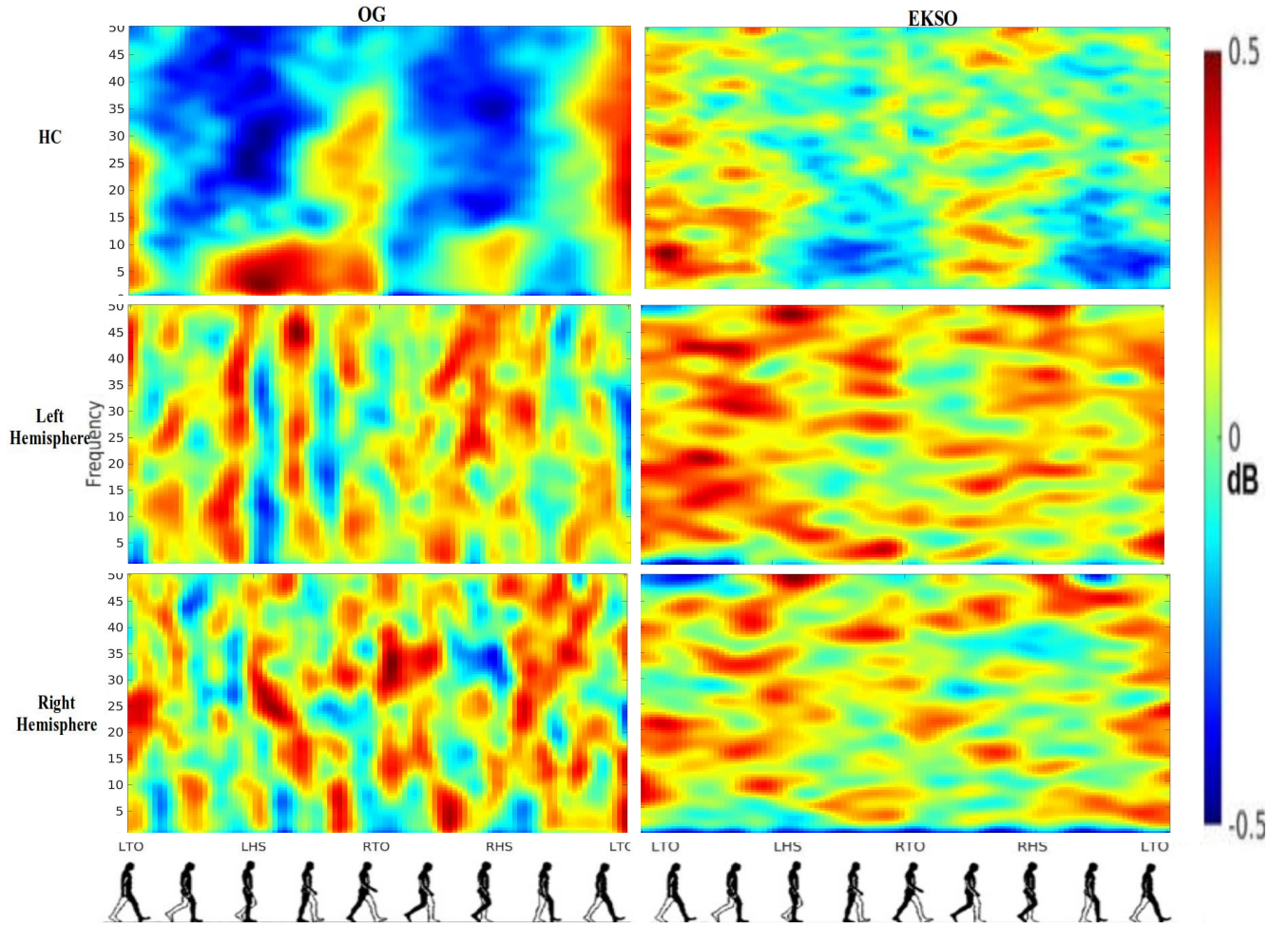


Fig S 2: Average ERSF output for the C3 channel. This Figure shows in rows the groups - healthy-controls (HC), and Stroke Patients (ST) Left Stroke side and Right Stroke side, and in columns the gait-evaluation modalities OG and Ekso. Each plot has in y-axis frequency between 0-50Hz, and in x-axis all the gait-phases of the gait-cycle. Red spots represent synchronization and darker blue spots represent desynchronization. The level of sync-desync is defined in the colorbar between $[-0.5, 0.5]$ dB and plotted based on the jet colormap. Knaepen et al. [1] suggested. Red and pink spots represent a comparison between HC and ST groups on the same walking condition i.e., OG or Ekso.

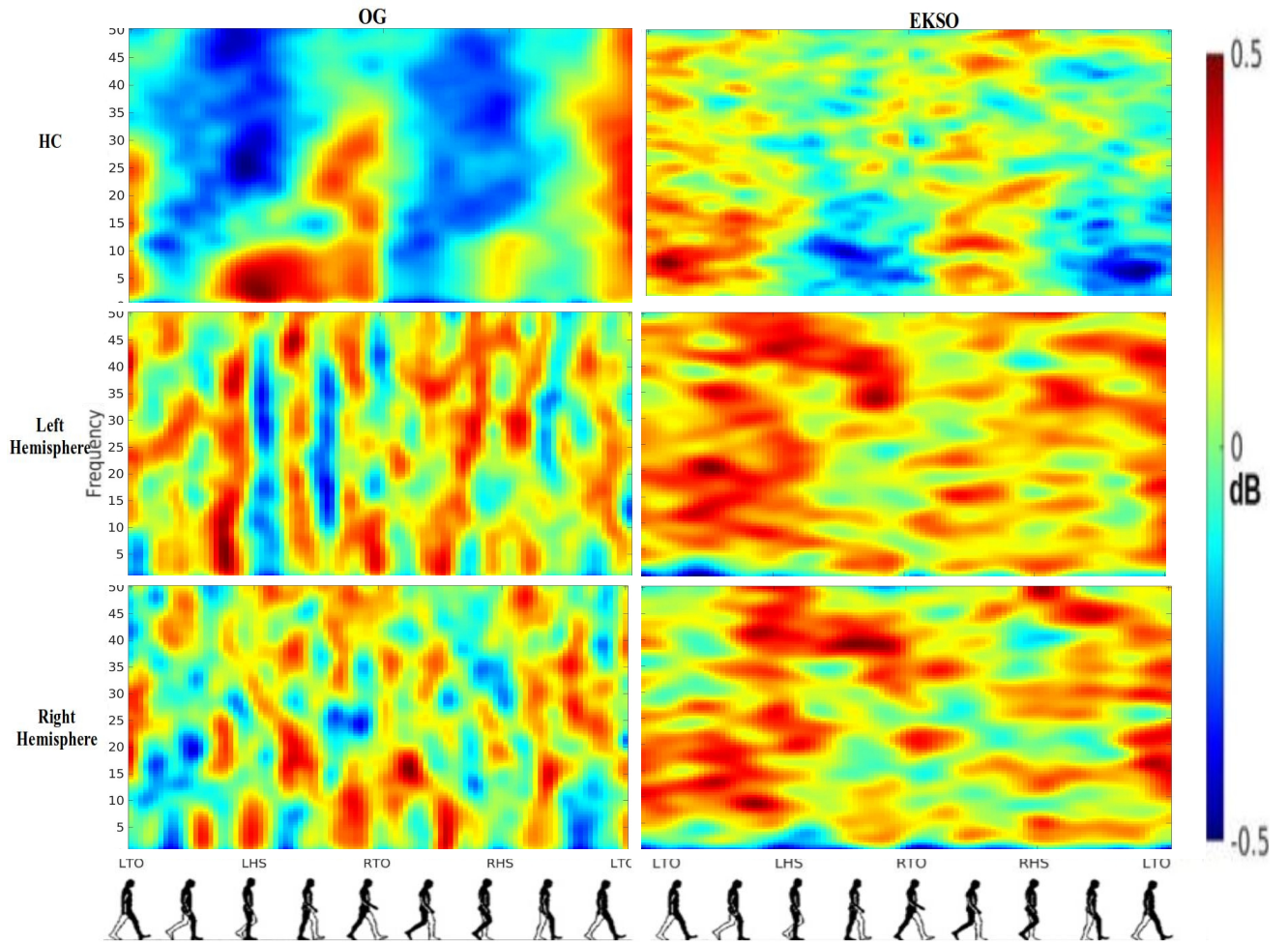
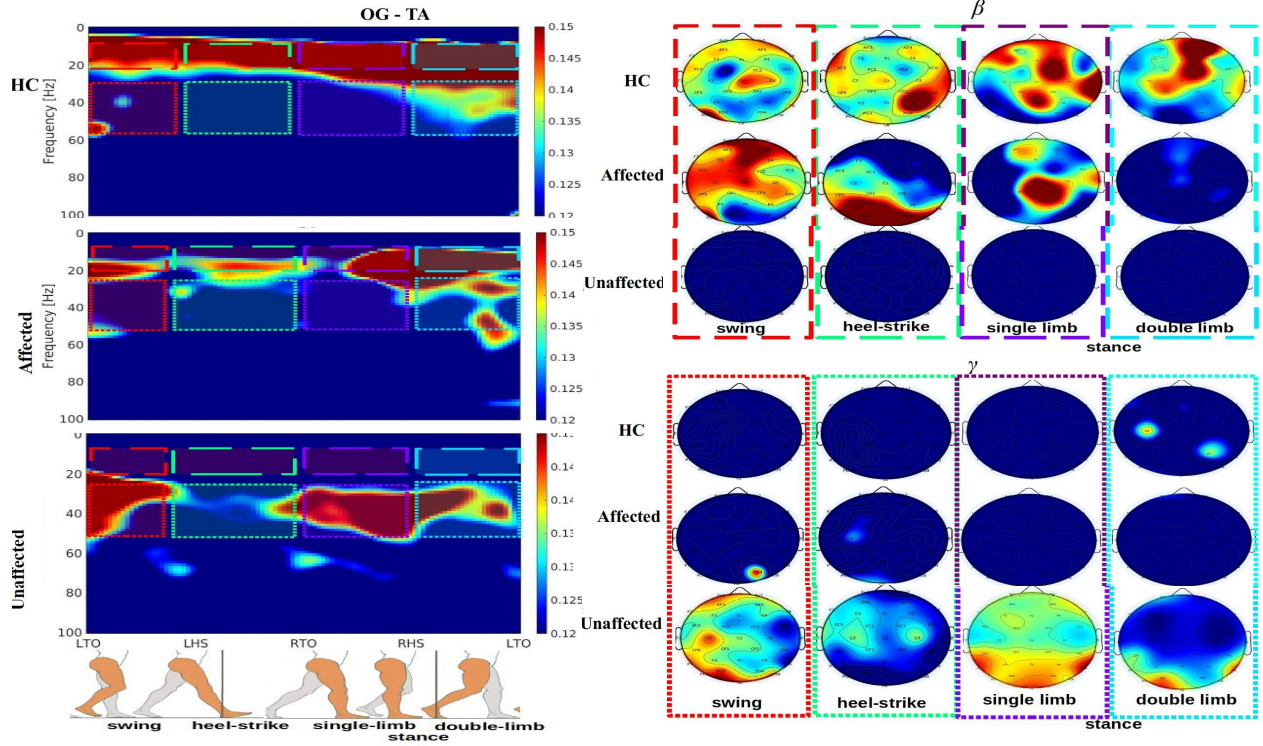
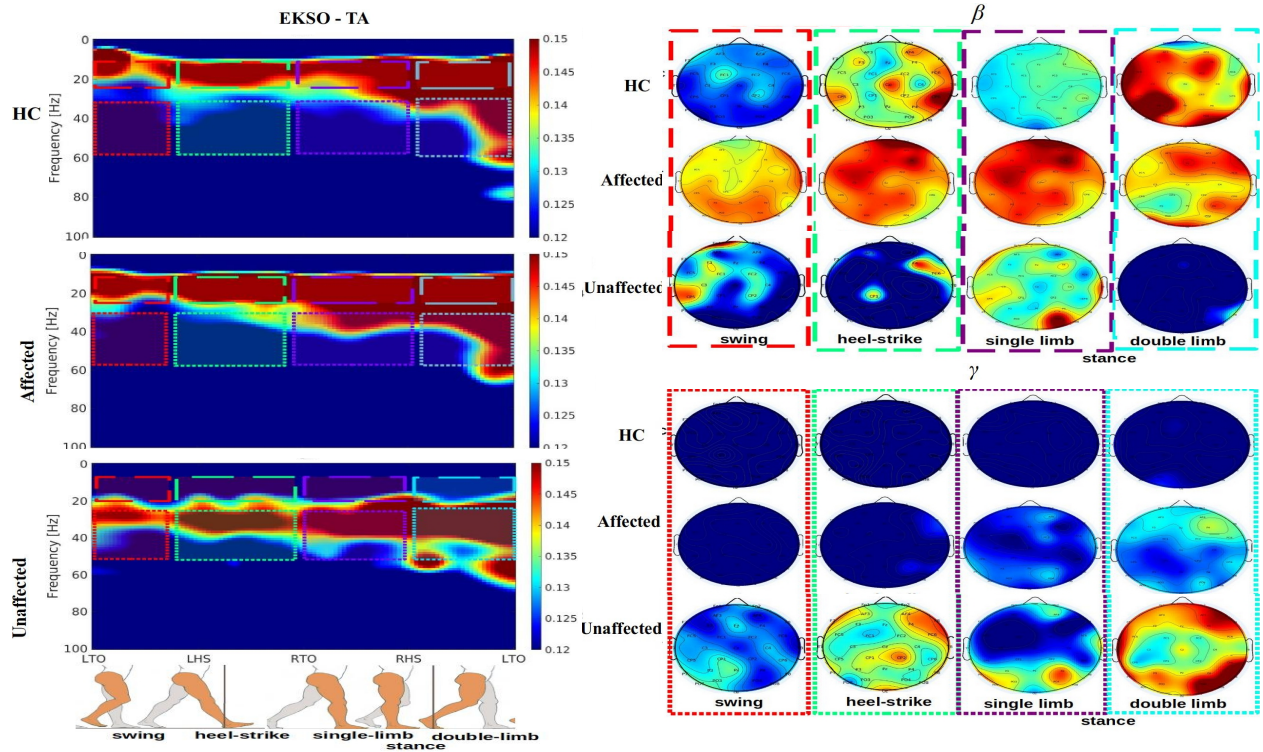


Fig S 3: Average ERSF output for the Pz channel. This Figure shows in rows the groups - healthy-controls (HC), and Stroke Patients (ST) Left Stroke side and Right Stroke side, and in columns the gait-evaluation modalities OG and Ekso. Each plot has in y-axis frequency between 0-50Hz, and in x-axis all the gait-phases of the gait-cycle. Red spots represent synchronization and darker blue spots represent desynchronization. The level of sync-desync is defined in the colorbar between $[-0.5, 0.5]$ dB and plotted based on the jet colormap. Knaepen et al. [1] suggested. Red and pink spots represent a comparison between HC and ST groups on the same walking condition i.e., OG or Ekso.

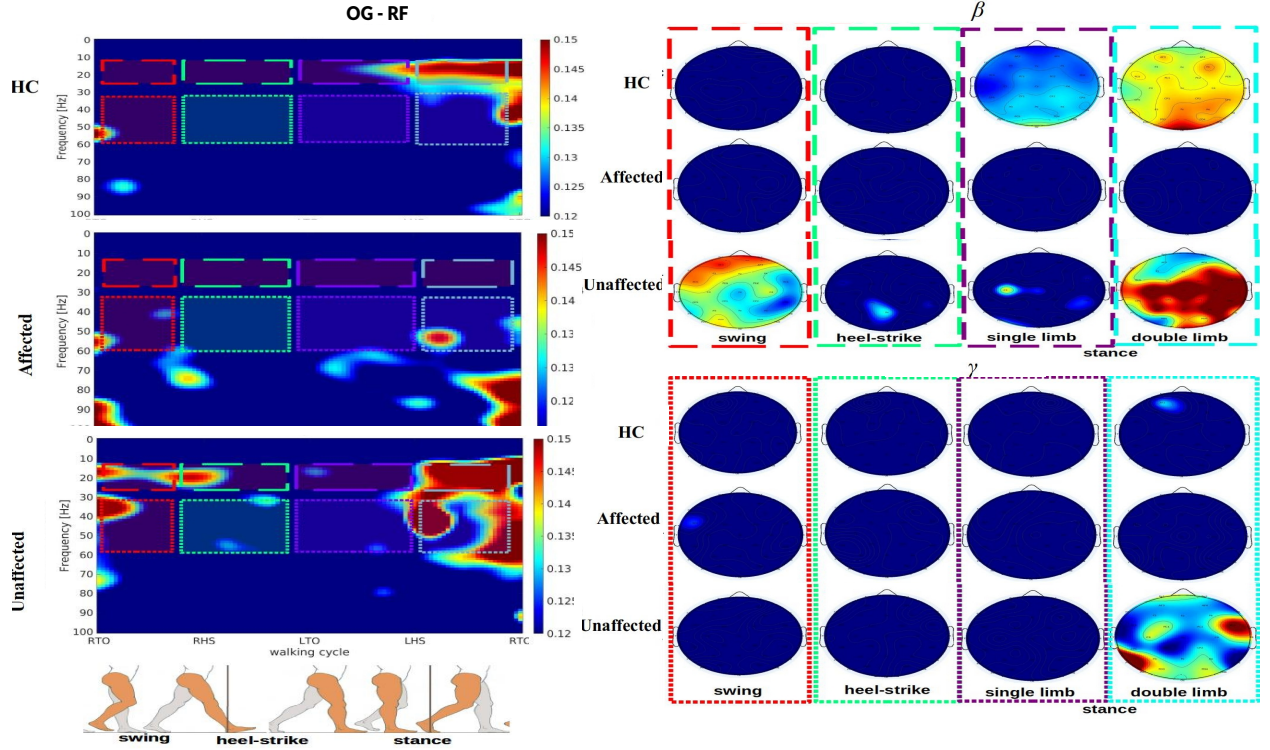


(a) Overground-Gait (OG) CMC measures - movement of the right-limb - TA left

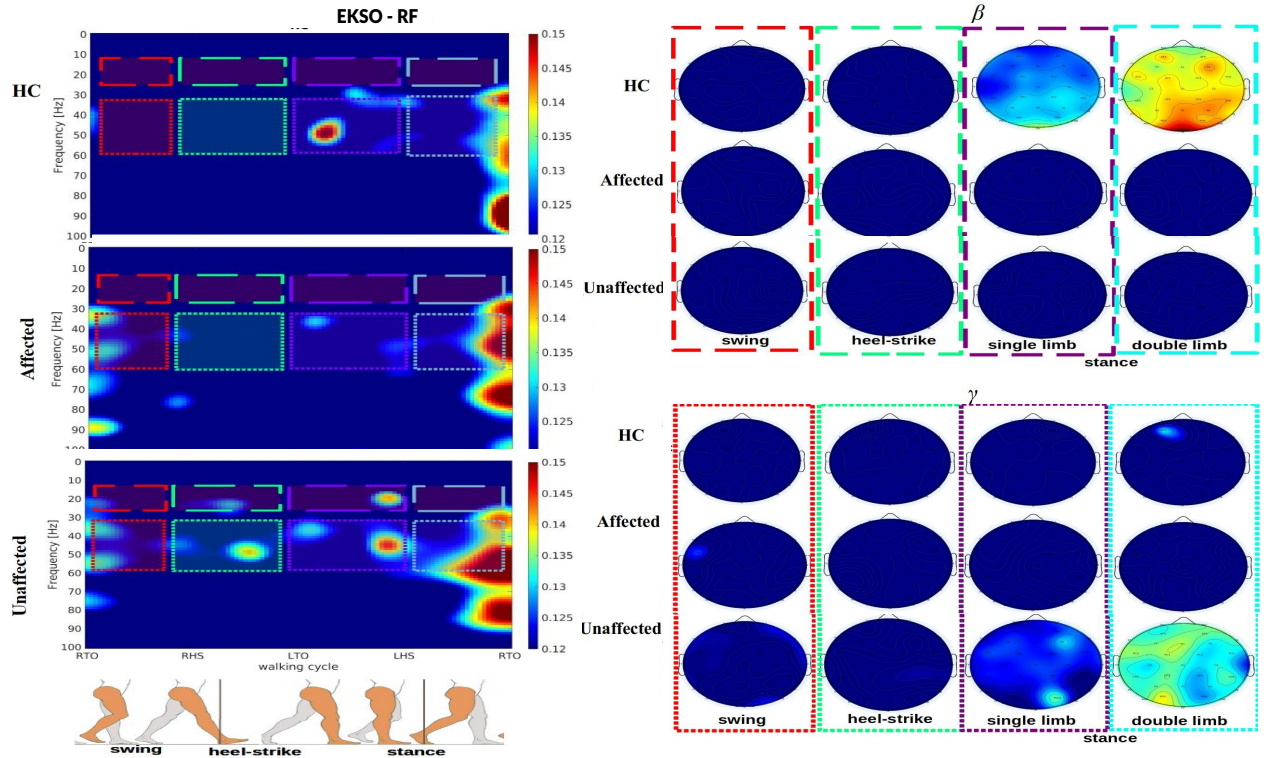


(b) Ekso CMC measures - movement of the right-limb - TA left

Fig S 4: TA left - Average CMC measures for Right Stroke Side, reporting the CMC output for healthy-controls (HC), and Stroke patients (ST) for Affected and Unaffected limb. This output is only associated with the movement of left lower-limb. All the CMC values are plotted between [0.12,0.15] using the jet colormap and respecting the 95% of confidence interval described in we followed the methodology in [2], [3]. Figures S4a and S4b show the CMC outputs for the OG and Ekso modalities. In left plots we reported the CMC setting y-axis as frequency in Hz and x-axis as the gait-phases associated with the movement of the left limb.

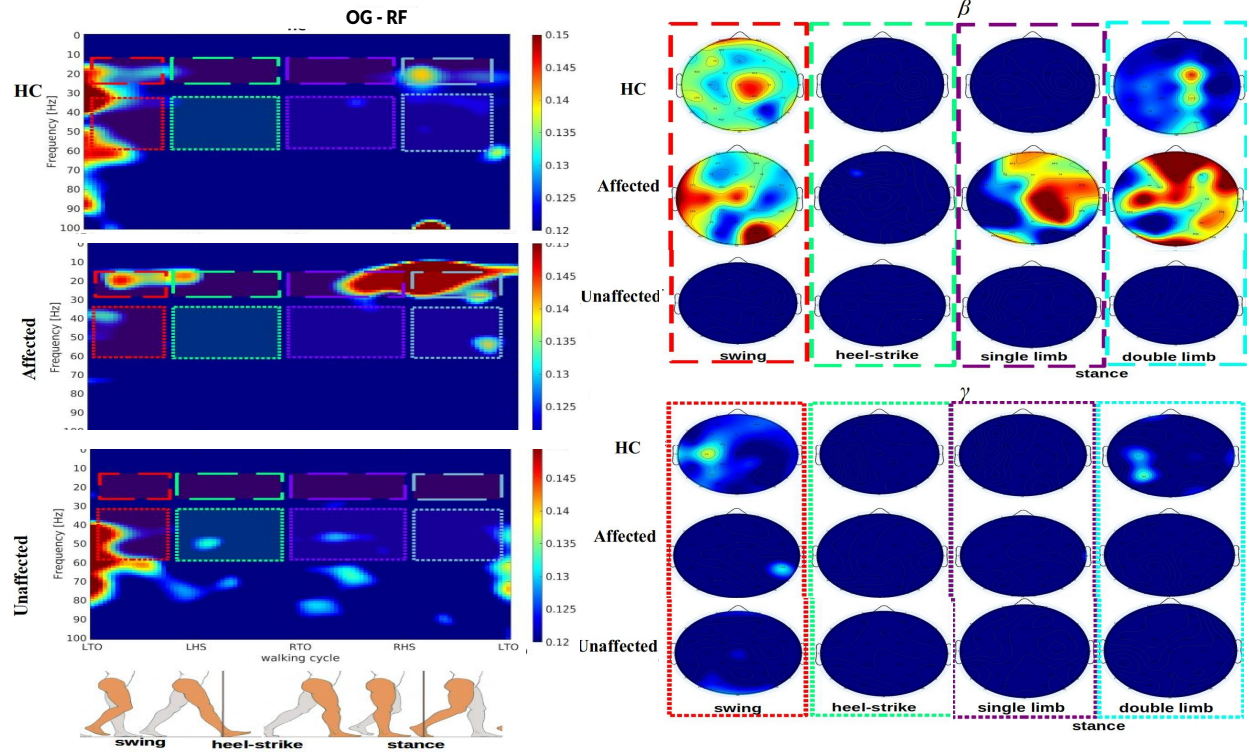


(a) Overground-Gait (OG) CMC measures - movement of the right-limb - RF right

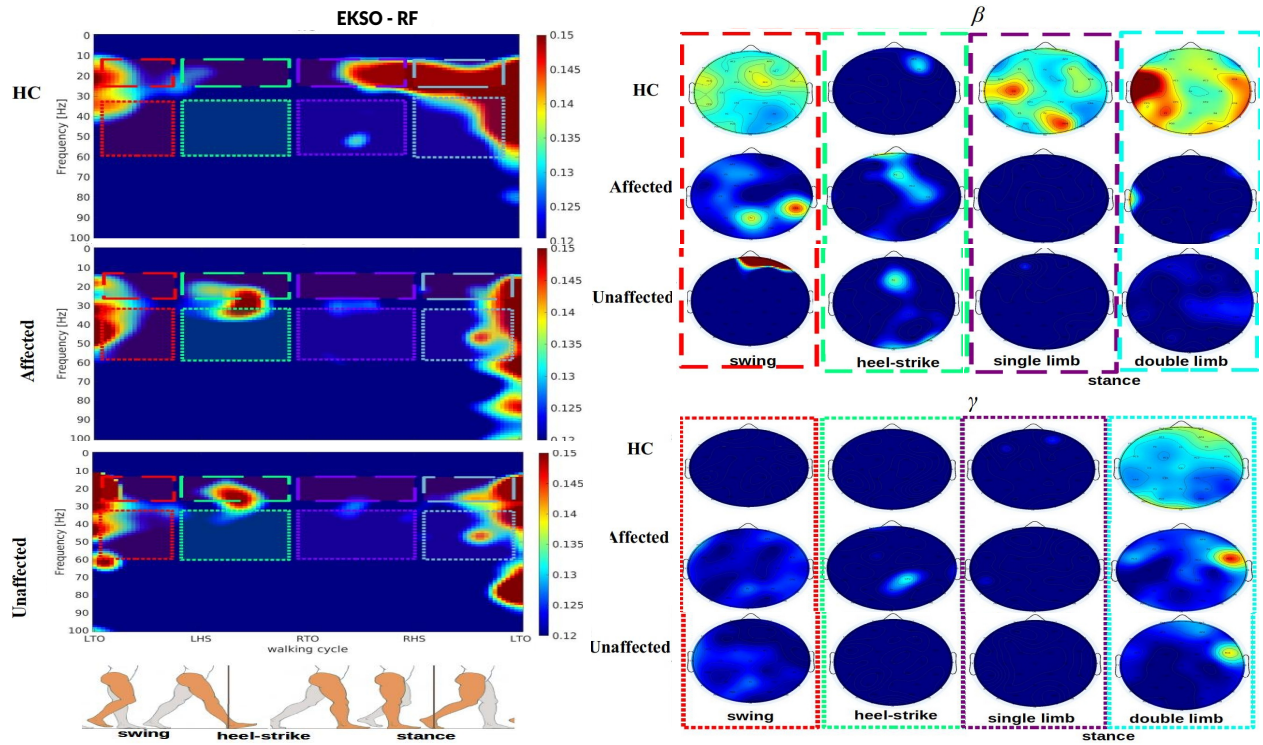


(b) Ekso CMC measures - movement of the right-limb - RF right

Fig S 5: RF right - Average CMC measures for Left Stroke Side, reporting the CMC output for healthy-controls (HC), and Stroke patients (ST) for Affected and Unaffected limb. This output is only associated with the movement of right lower-limb. All the CMC values are plotted between [0.12,0.15] using the jet colormap and respecting the 95% of confidence interval described in we followed the methodology in [2], [3]. Figures S5a and S5b show the CMC outputs for the OG and Ekso modalities. In left plots we reported the CMC setting y-axis as frequency in Hz and x-axis as the gait-phases associated with the movement of the right limb.



(a) Overground-Gait (OG) CMC measures - movement of the left-limb - RF left



(b) Ekso CMC measures - movement of the left-limb - RF left

Fig S 6: RF left - Average CMC measures for Right Stroke Side, reporting the CMC output for healthy-controls (HC), and Stroke patients (ST) for Affected and Unaffected limb. This output is only associated with the movement of left lower-limb. All the CMC values are plotted between [0.12,0.15] using the jet colormap and respecting the 95% of confidence interval described in we followed the methodology in [2], [3]. Figures S6a and S6b show the CMC outputs for the OG and Ekso modalities. In left plots we reported the CMC setting y-axis as frequency in Hz and x-axis as the gait-phases associated with the movement of the left limb.

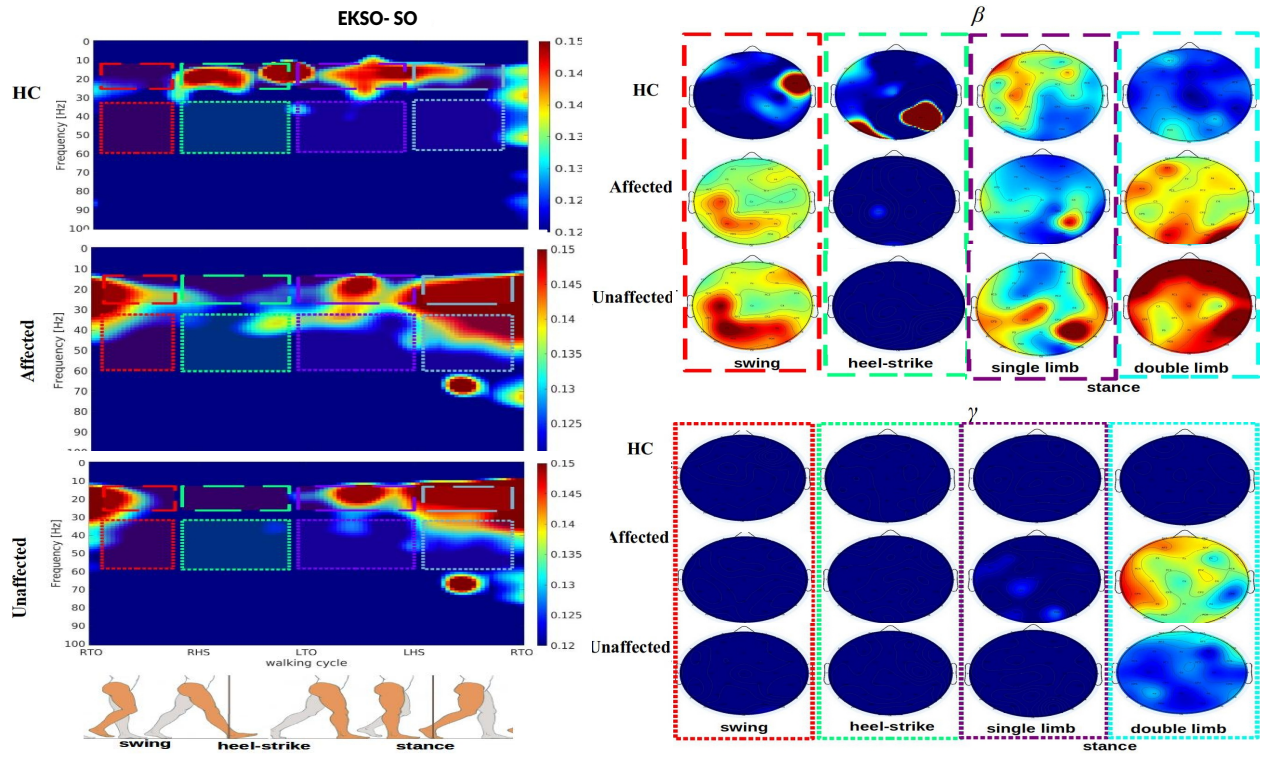
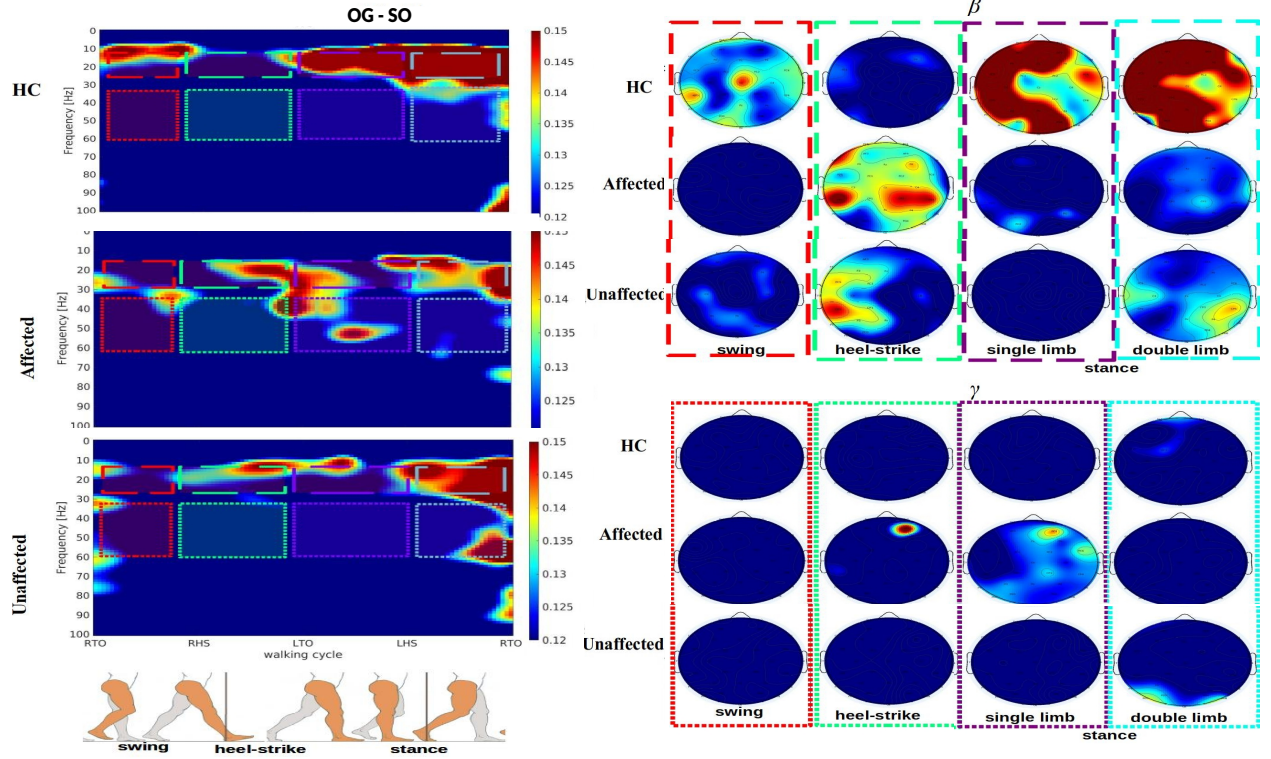
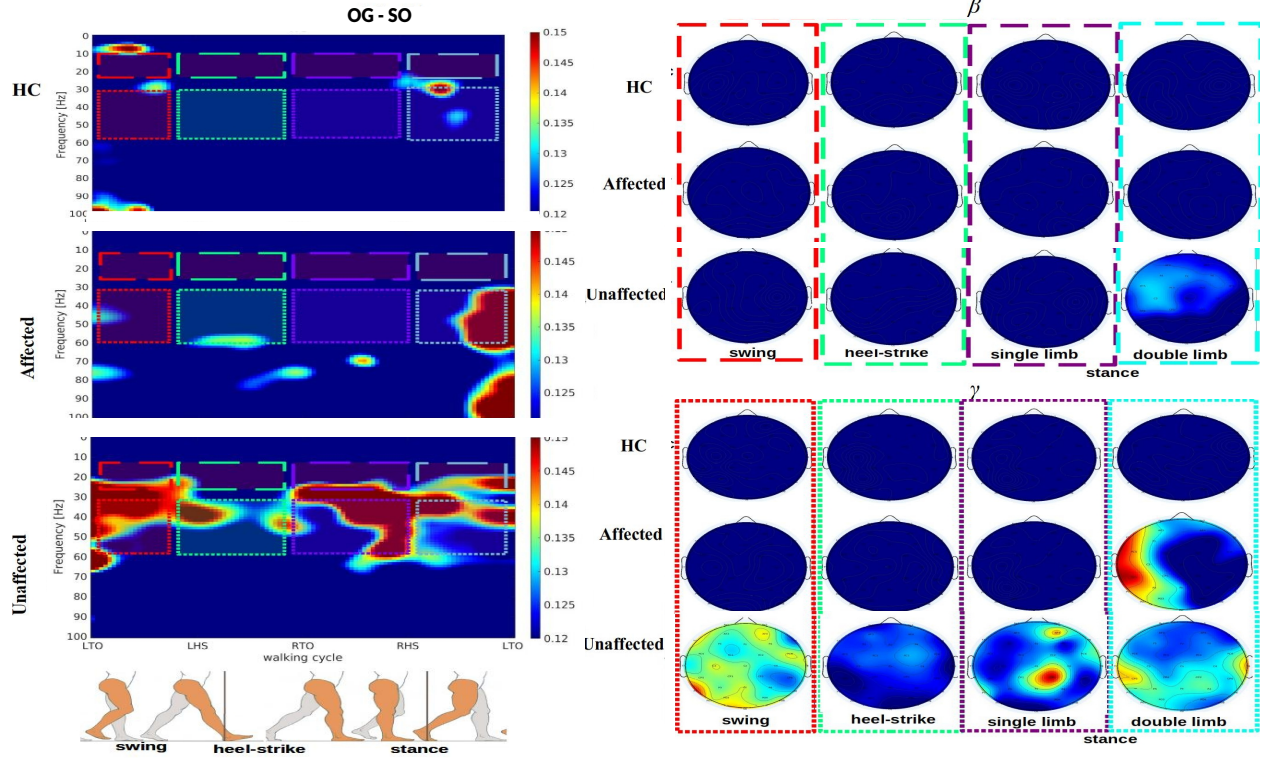
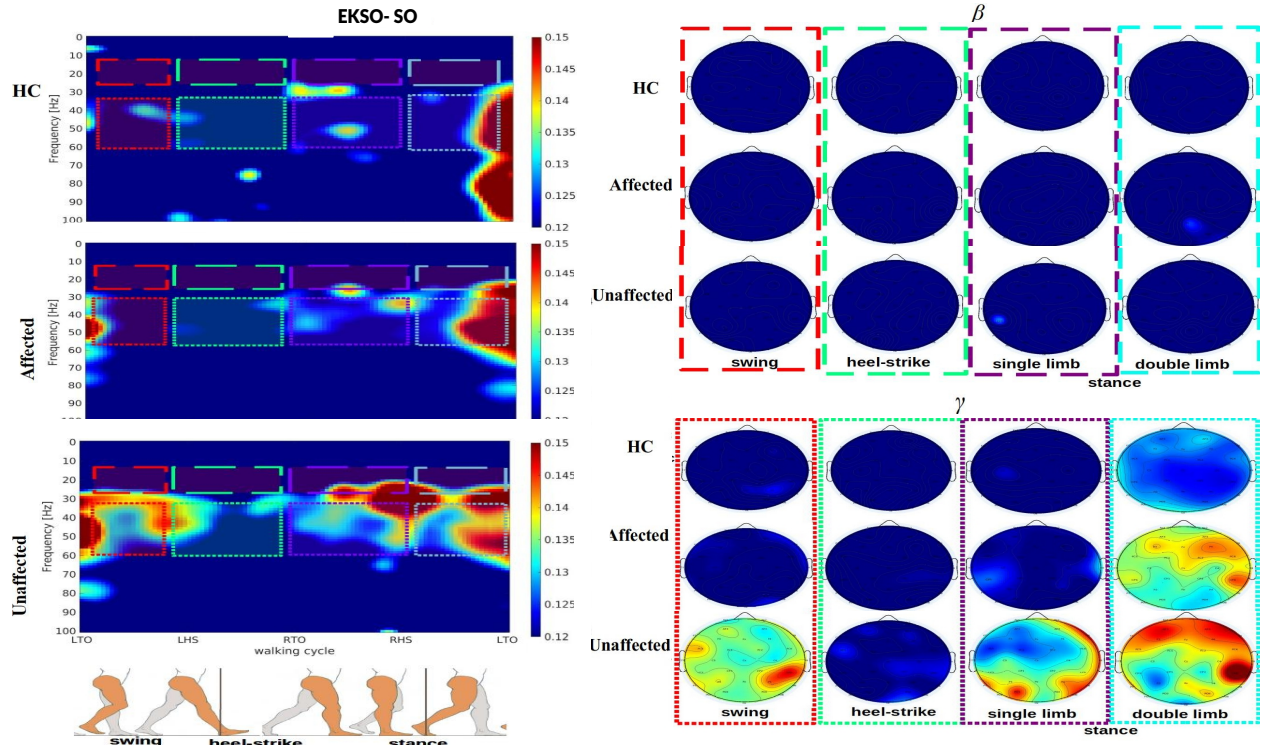


Fig S 7: SO right - Average CMC measures for Left Stroke Side, reporting the CMC output for healthy-controls (HC), and Stroke patients (ST) for Affected and Unaffected limb. This output is only associated with the movement of right lower-limb. All the CMC values are plotted between [0.12,0.15] using the jet colormap and respecting the 95% of confidence interval described in we followed the methodology in [2], [3]. Figures S7a and S7b show the CMC outputs for the OG and Ekso modalities. In left plots we reported the CMC setting y-axis as frequency in Hz and x-axis as the gait-phases associated with the movement of the right limb.



(a) Overground-Gait (OG) CMC measures - movement of the left-limb - SO left



(b) Ekso CMC measures - movement of the left-limb - SO left

Fig S 8: SO left - Average CMC measures for Right Stroke Side, reporting the CMC output for healthy-controls (HC), and Stroke patients (ST) for Affected and Unaffected limb. This output is only associated with the movement of left lower-limb. All the CMC values are plotted between [0.12,0.15] using the jet colormap and respecting the 95% of confidence interval described in we followed the methodology in [2], [3]. Figures S8a and S8b show the CMC outputs for the OG and Ekso modalities. In left plots we reported the CMC setting y-axis as frequency in Hz and x-axis as the gait-phases associated with the movement of the left limb.

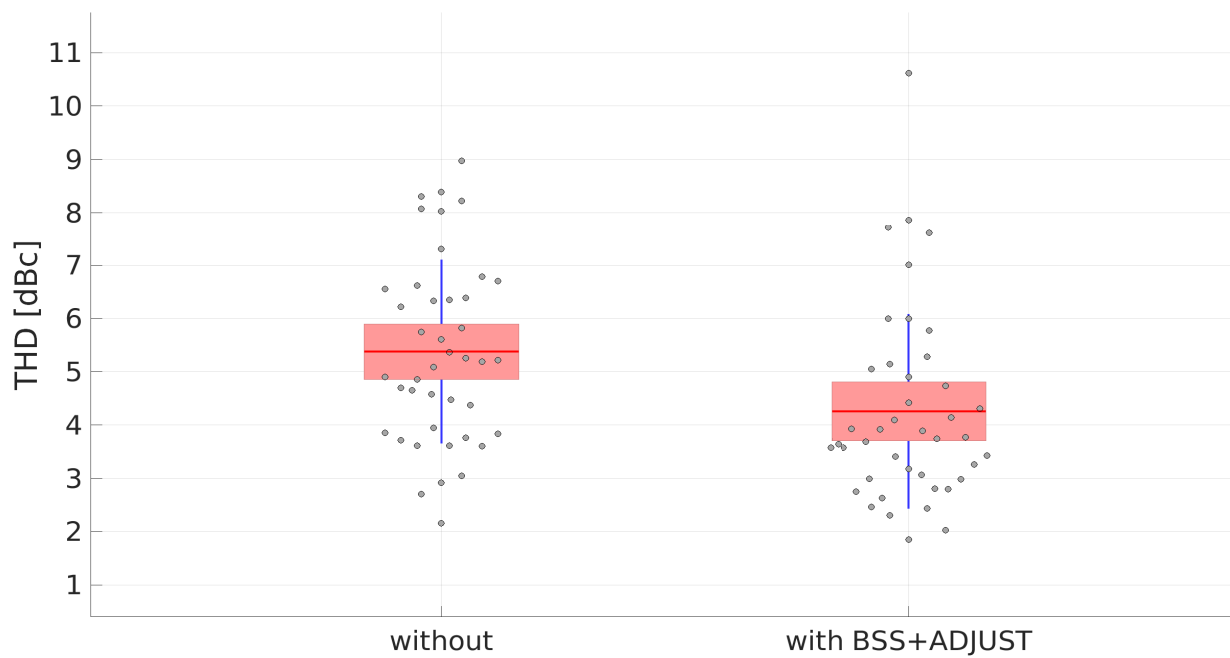


Fig S 9: Total-Harmonic Distortion (THD) analysis reporting the values in y-axis as the THD trial-values in dBc and in the x-axis we described the measures of the THD after filtering (1) without using Artifact Subspace Reconstruction (ASR) and ADJUST, and (2) using the Blind-Source Separation (BSS) method ASR and ADJUST for artifact-removal. THD difference between modalities is significant - $F(1,445)=13.35$, $p=0.0278$. The points in grey show the outlier values on each modality. For calculating the THD values in dBs we used the method described in [4].

REFERENCES

- [1] K. Knaepen, A. Mierau, E. Swinnen, H. Fernandez Tellez, M. Michielsens, E. Kerckhofs, D. Lefeber, and R. Meeusen, "Human-robot interaction: does robotic guidance force affect gait-related brain dynamics during robot-assisted treadmill walking?" *PloS one*, vol. 10, no. 10, p. e0140626, 2015.
- [2] H. E. Rossiter, C. Eaves, E. Davis, M.-H. Boudrias, C.-h. Park, S. Farmer, G. Barnes, V. Litvak, and N. S. Ward, "Changes in the location of corticomuscular coherence following stroke," *NeuroImage: Clinical*, vol. 2, pp. 50–55, 2013.
- [3] K. von Carlowitz-Ghori, Z. Bayraktaroglu, F. U. Hohlefeld, F. Losch, G. Curio, and V. V. Nikulin, "Corticomuscular coherence in acute and chronic stroke," *Clinical Neurophysiology*, vol. 125, no. 6, pp. 1182–1191, 2014.
- [4] M. S. Diab and S. A. Mahmoud, "A 1.7 nw 24 hz variable gain elliptic low pass filter in 90-nm cmos for biosignal detection," in *2019 IEEE International Symposium on Circuits and Systems (ISCAS)*. IEEE, 2019, pp. 1–5.