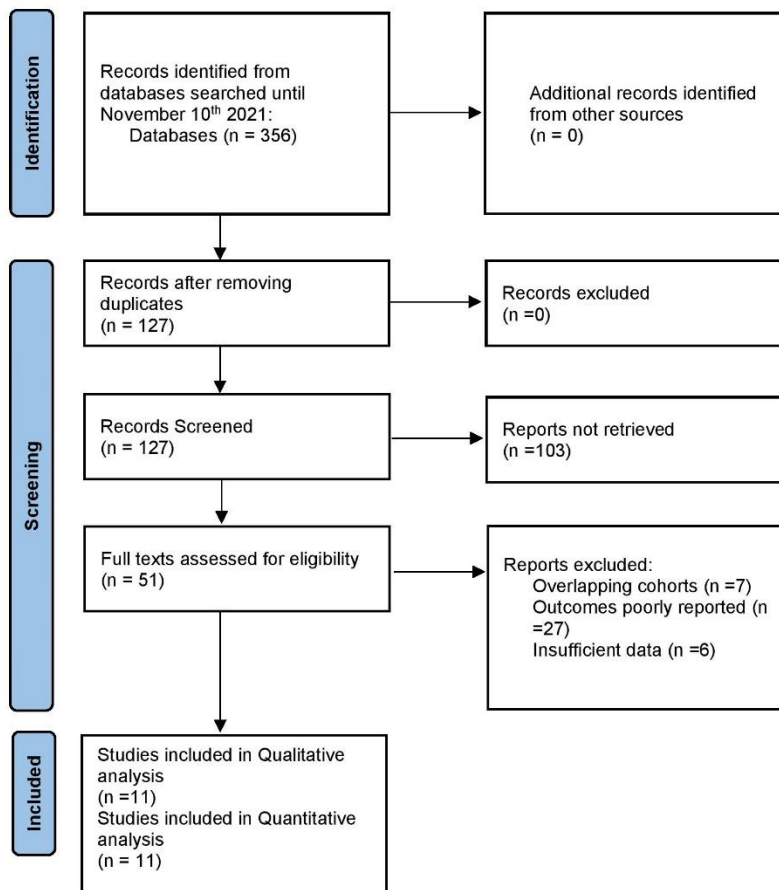


Supplementary Fig. 1 : PRISMA flowsheet for data selection

Page MJ, McKenzie JE, Bossuyt PM, Boutron I, Hoffmann TC, Mulrow CD, et al. The PRISMA 2020 statement: an updated guideline for reporting systematic reviews. *BMJ* 2021;372:n71. doi: 10.1136/bmj.n71

PRISMA 2020 flow diagram



Supplementary Table 1. Newcastle-ottawa scale (NOS) table summarizing the non-randomized studies included in our analysis.

Supplementary Table 1. NOS for the risk of bias and quality assessment of NRSs

| Author | Year | Selection | | | Comparability | | Exposure | | Total score |
|------------------|------|--------------------------------------|-------------------------------------|-----------------------|------------------------|---|---------------------------|---|-------------|
| | | Adequate definition of patient cases | Representativeness of patient cases | Selection of controls | Definition of controls | Control for important or additional factors | Ascertainment of exposure | Same method of ascertainment for participants | |
| Liverani et al. | 2016 | * | * | | * | * | * | * | 6 |
| Cadoni et al. | 2017 | * | * | | * | ** | * | * | 7 |
| Chien et al. | 2017 | * | * | | * | ** | * | * | 7 |
| Schenck et al. | 2017 | * | * | | * | ** | * | * | 7 |
| Rodriguez et al. | 2019 | * | * | | * | ** | * | * | 7 |
| Mouchli et al. | 2019 | * | * | | * | ** | * | * | 7 |

NOS, Newcastle-Ottawa scale; NRS, non-randomized study.

Supplementary Fig 2. A revised Cochrane risk-of-bias tool for randomized trials included in our analysis.

