

Supplementary Information

Supplementary Figure S1. Forest plots illustrate the effect of inflammatory bowel disease (IBD) on neurodegenerative disorders. A. IBD on amyotrophic lateral sclerosis (ALS); B. IBD on Alzheimer's disease (AD); C. IBD on Parkinson's disease (PD); D. IBD on multiple sclerosis (MS).

Supplementary Figure S2. Leave-one-out sensitivity analysis for inflammatory bowel disease (IBD) on neurodegenerative disorders. A. IBD on amyotrophic lateral sclerosis (ALS); B. IBD on Alzheimer's disease (AD); C. IBD on Parkinson's disease (PD); D. IBD on multiple sclerosis (MS).

Supplementary Figure S3. Funnel plots evaluating the horizontal heterogeneity for the effect of inflammatory bowel disease (IBD) on neurodegenerative disorders. A. IBD on amyotrophic lateral sclerosis (ALS); B. IBD on Alzheimer's disease (AD); C. IBD on Parkinson's disease (PD); D. IBD on multiple sclerosis (MS); E. Crohn's disease (CD) on ALS; F. CD on AD; G. CD on PD; H. CD on MS; I. ulcerative colitis (UC) on ALS; J. UC on AD; K. UC on PD; L. UC on MS.

Supplementary Figure S4. Forest plots demonstrate the effect of Crohn's disease (CD) and ulcerative colitis (UC) on neurodegenerative disorders. A. CD on amyotrophic lateral sclerosis (ALS); B. CD on Alzheimer's disease (AD); C. CD on Parkinson's disease (PD); D. CD on multiple sclerosis (MS); E. UC on ALS; F. UC on AD; G. UC on PD; H. UC on MS.

Supplementary Figure S5. Scatter plots of the causal effect of Crohn's disease (CD) and ulcerative colitis (UC) on neurodegenerative disorders. A. CD on amyotrophic lateral sclerosis (ALS); B. CD on Alzheimer's disease (AD); C. CD on Parkinson's disease (PD); D. CD on multiple sclerosis (MS); E. UC on ALS; F. UC on AD; G. UC on PD; H. UC on MS.

Supplementary Figure S6. Leave-one-out sensitivity analysis for Crohn's disease (CD) and ulcerative colitis (UC) on neurodegenerative disorders. A. CD on amyotrophic lateral sclerosis (ALS); B. CD on Alzheimer's disease (AD); C. CD on Parkinson's disease (PD); D. CD on multiple sclerosis (MS); E. UC on ALS; F. UC on AD; G. UC on PD; H. UC on MS.

Supplementary Figure S7. Transcriptomic analysis of shared risk loci. A-B. mRNA expressions of SCFD1 (A) and HEATR5A (B) in IBD patients and control subjects from GSE112680. C-D. mRNA expressions of SCFD1 (C) and HEATR5A (D) in ALS patients and control subjects from E-MTAB-11349. E-F. Correlations between G2E3 expression and HEATR5A expression in IBD patients (E) and control subjects (F) from GSE112680. G-H. Correlations between SCFD1 expression and HEATR5A expression in IBD patients (G) and control subjects (H) from GSE112680. I-J. Correlations between G2E3 expression and HEATR5A expression in ALS patients (I) and

control subjects (**J**) from E-MTAB-11349. **K-L**. Correlations between *SCFD1* expression and *HEATR5A* expression in ALS patients (**K**) and control subjects (**L**) from E-MTAB-11349. * $P < 0.05$, ** $P < 0.01$, *** $P < 0.001$, NS: non-significant.

Supplementary Table S1. Characteristics of data sources used in this study

Supplementary Table S2. Detailed information for SNPs in the Mendelian Randomization analysis of inflammatory bowel disease (IBD) on neurodegenerative disorders.

Supplementary Table S3. Mendelian randomization (MR) analysis for the causality ulcerative colitis (UC) and Crohn's disease (CD) on neurodegenerative disorders.

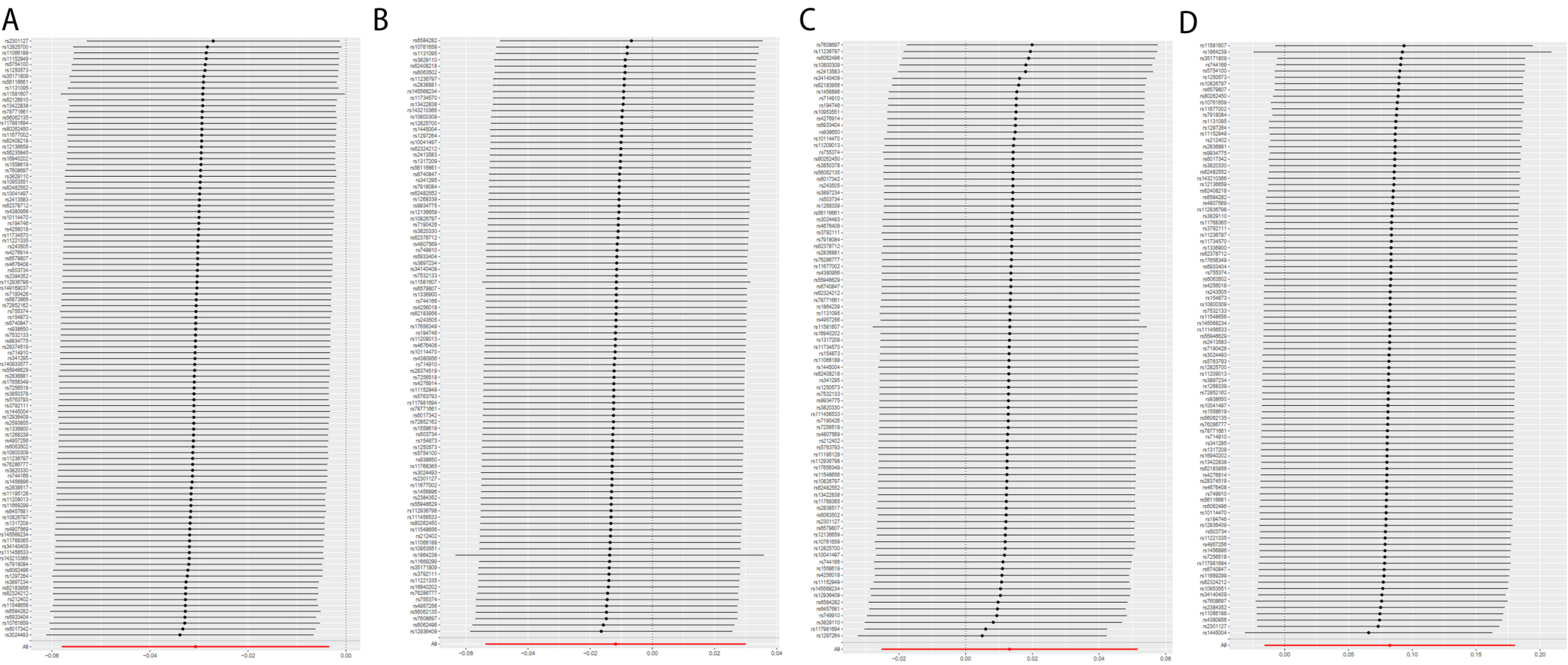
Supplementary Table S4. Assessment of pleiotropy.

Supplementary Table S5. Mendelian randomization (MR) analysis for the causality of neurodegenerative disorders on inflammatory bowel disease (IBD), including ulcerative colitis (UC) and Crohn's disease (CD).

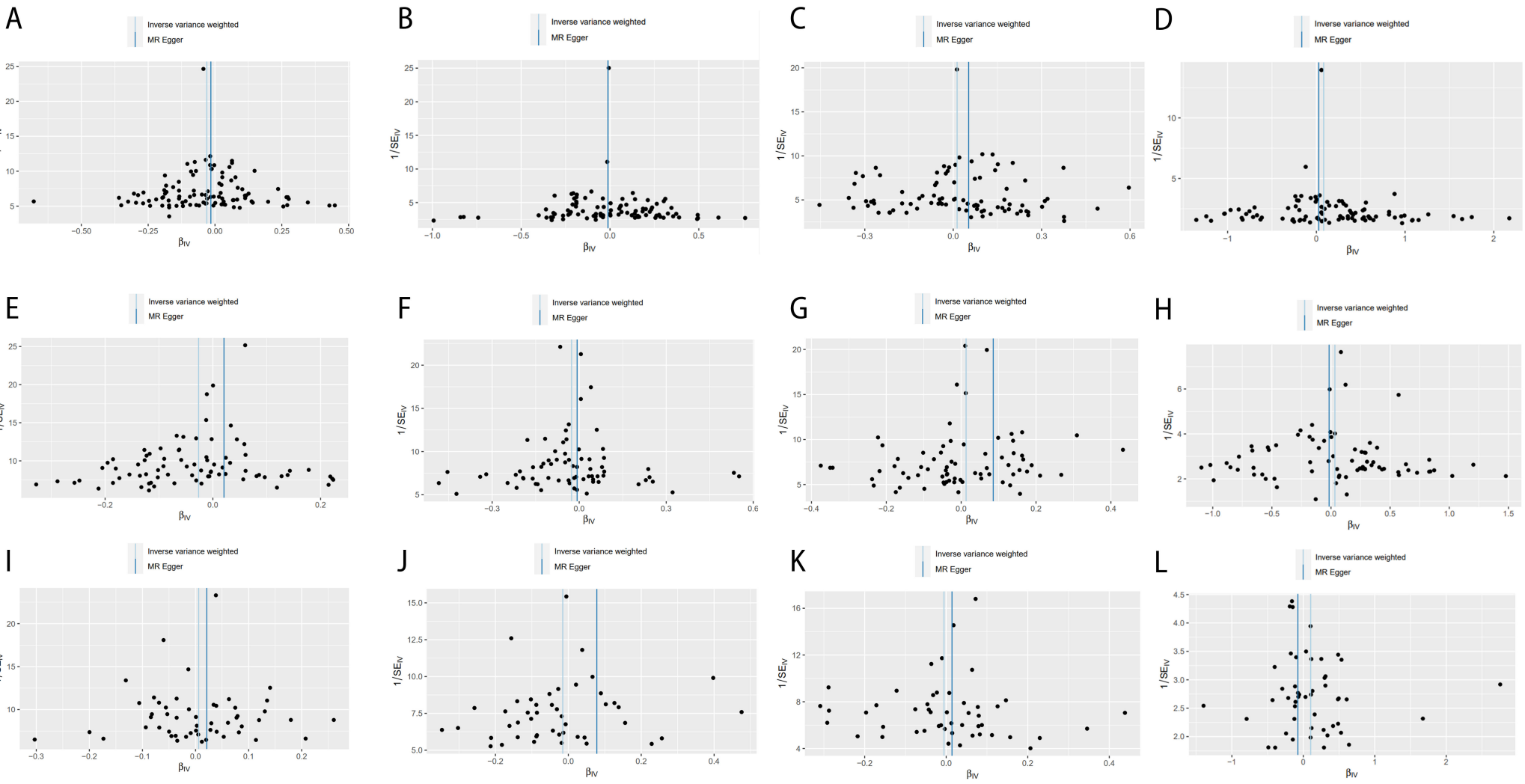
Supplementary Table S6. Genetic correlation between inflammatory bowel disease (IBD) and amyotrophic lateral sclerosis (ALS).

Supplementary Table S7. Functional enrichment of shared risk loci.

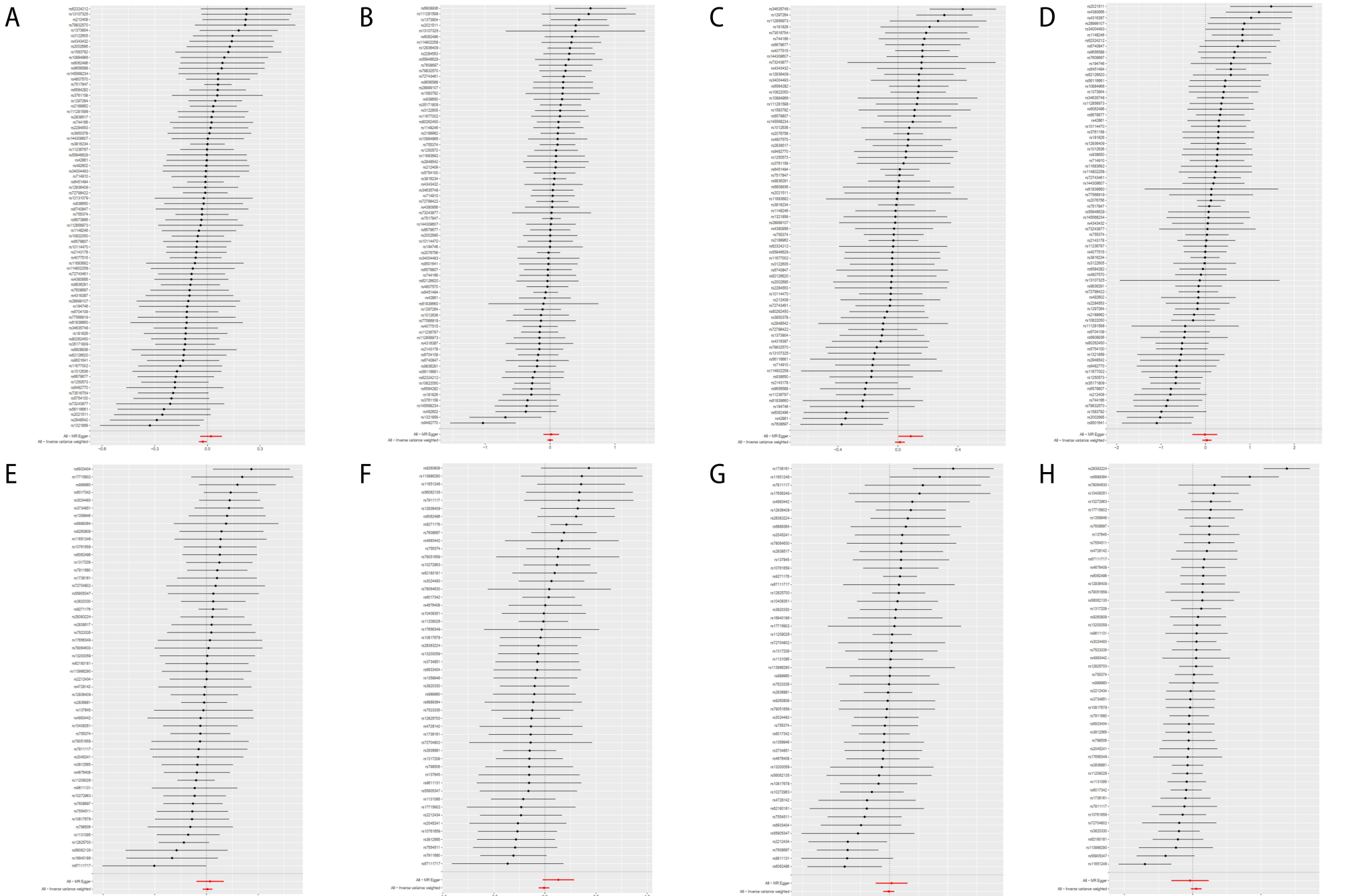
Supplementary Figure S2



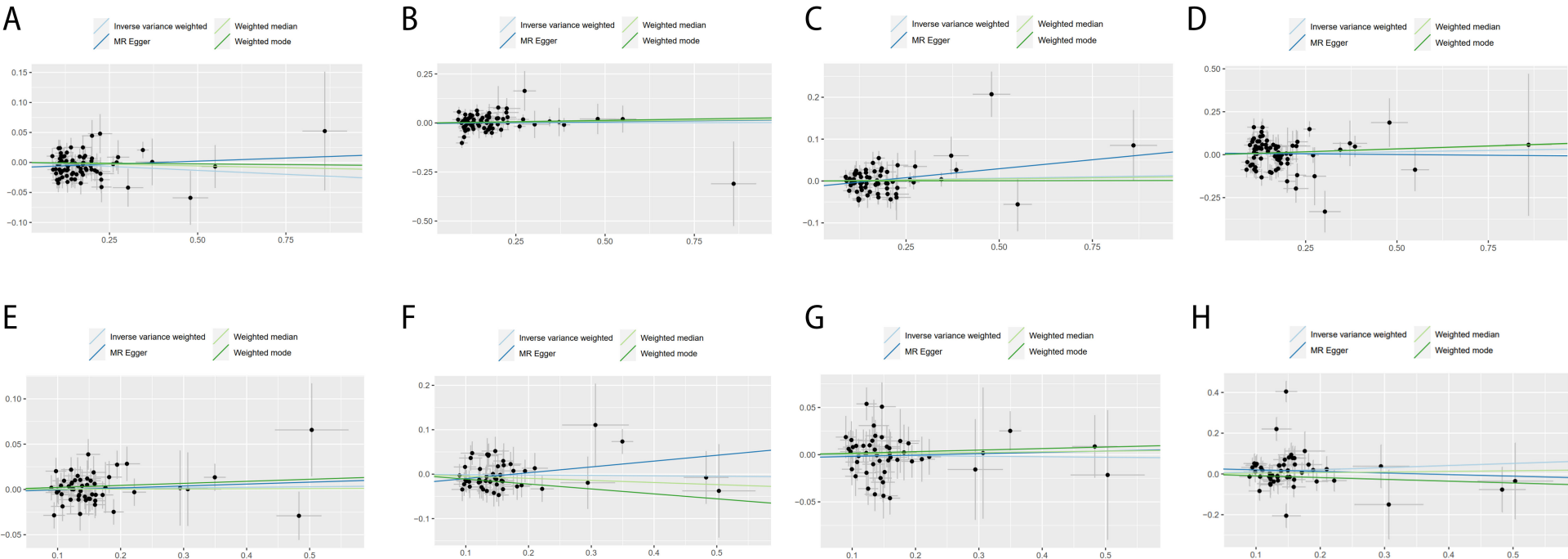
Supplementary Figure S3



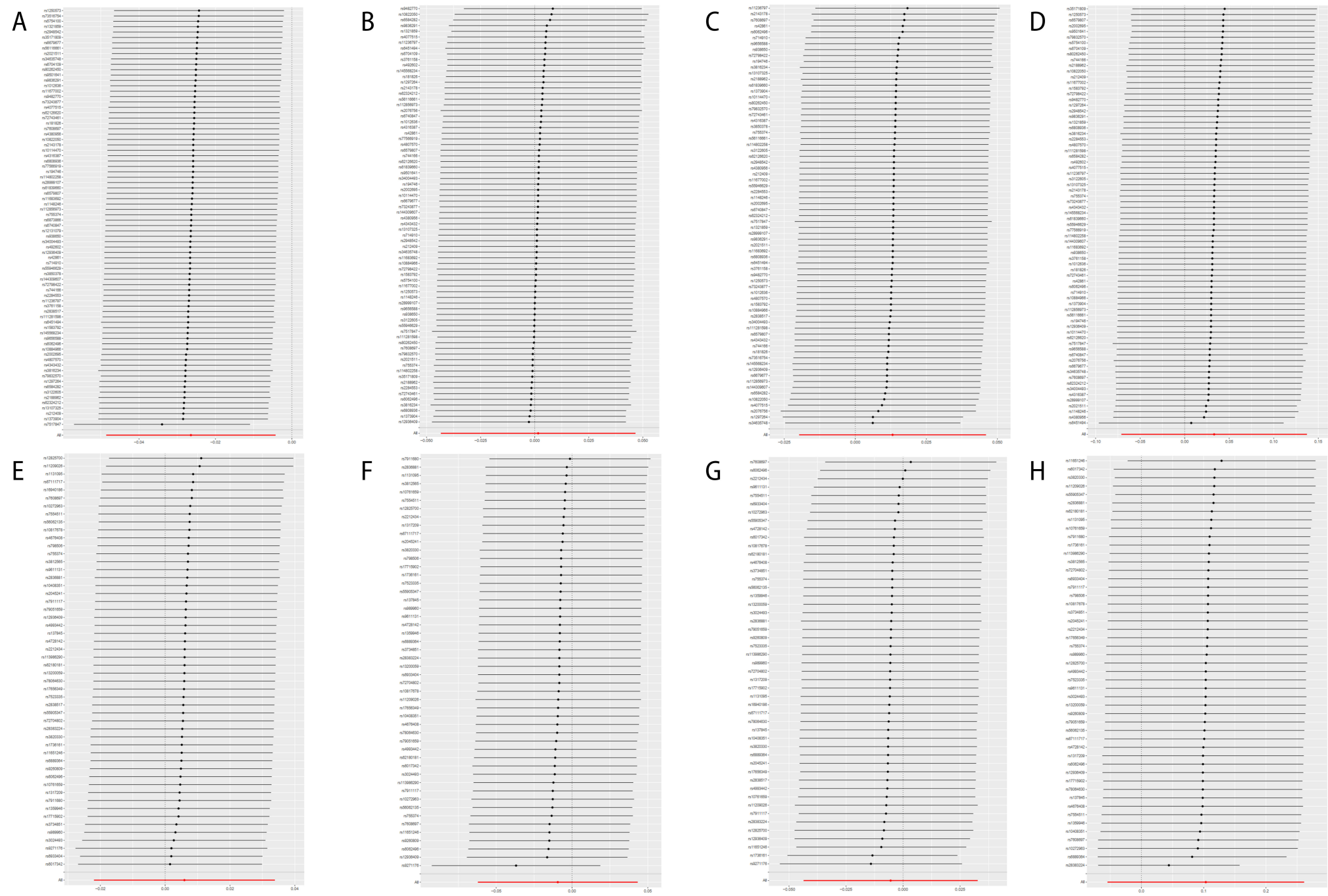
Supplementary Figure S4



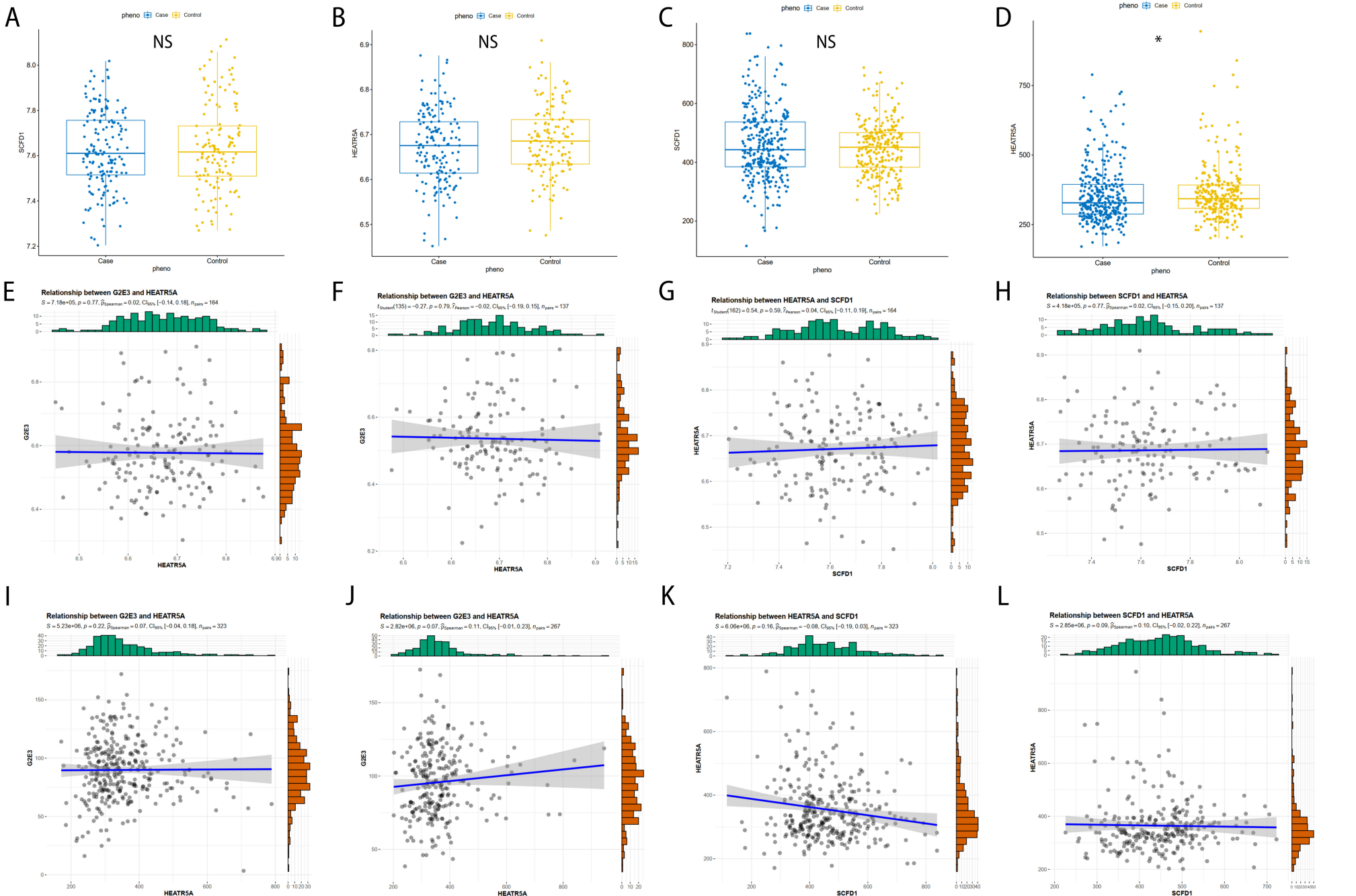
Supplementary Figure S5



Supplementary Figure S6



Supplementary Figure S7



Supplementary Table S1. Characteristics of data sources used in this study

Traits	Data sources	Sample size (cases/controls)	Ancestry	Reference
IBD	<i>Nature Genetics</i>	25,042/34,915	European	de Lange et al., 2017
CD		12,194/28,072		
UC		12,366/33,609		
ALS	<i>Neuron</i>	20,806/59,804	European	Nicolas et al., 2018
AD	FinnGen	3,899/214,893	European	https://www.finngen.fi/
PD	International Parkinson's Disease Genomics Consortium	33,674/449,056	European	Nalls et al., 2019
MS	FinnGen	1,048/217,141	European	https://www.finngen.fi/

AD: Alzheimer's disease; ALS: amyotrophic lateral sclerosis; CD: Crohn's disease; IBD: inflammatory bowel disease; MS: multiple sclerosis; PD: Parkinson's disease; UC: ulcerative colitis.

Supplementary Table S2. Detailed information for SNPs in the Mendelian Randomization analysis of inflammatory bowel disease (IBD) on neurodegenerative disorders.

SNP	Chr	Location	Association with ALS			Association with AD			Association with PD			Association with MS		
			β	SE	P	β	SE	P	β	SE	P	β	SE	P
rs10041497	5	142135017	-0.17	0.17	0.31	-0.40	0.32	0.21	0.30	0.24	0.20	0.40	0.58	0.49
rs10114470	9	114785492	-0.07	0.10	0.48	<0.01	0.20	0.99	-0.05	0.12	0.66	0.33	0.36	0.36
rs10761659	10	62685804	0.06	0.09	0.46	-0.22	0.16	0.17	0.06	0.11	0.56	-0.24	0.28	0.40
rs10800309	1	161502368	0.02	0.12	0.89	-0.21	0.21	0.32	-0.33	0.15	0.02	0.06	0.38	0.88
rs10826797	10	30401447	0.11	0.15	0.47	-0.15	0.27	0.57	0.19	0.25	0.46	-1.04	0.48	0.03
rs10953551	7	107840456	-0.13	0.14	0.33	0.23	0.25	0.35	-0.17	0.17	0.31	0.82	0.45	0.07
rs11066188	12	112172910	-0.36	0.16	0.03	0.33	0.30	0.27	0.03	0.20	0.86	1.55	0.53	<0.01
rs111456533	10	124750812	0.20	0.18	0.26	0.49	0.39	0.21	0.13	0.29	0.67	0.06	0.68	0.93
rs11152949	6	106001210	-0.30	0.15	0.04	0.10	0.29	0.74	0.32	0.20	0.10	-0.67	0.51	0.19
rs11195128	10	110426390	0.14	0.18	0.44	/	/	/	0.22	0.29	0.45	/	/	/
rs11209013	1	67190603	0.14	0.18	0.44	<0.01	0.32	0.99	-0.17	0.22	0.43	0.30	0.58	0.61
rs11221335	11	128516011	-0.14	0.20	0.47	0.61	0.36	0.09	/	/	/	1.08	0.64	0.09
rs11236797	11	76588605	<0.01	0.09	0.98	-0.19	0.17	0.27	-0.26	0.12	0.02	<0.01	0.31	0.99
rs112936798	1	39336709	-0.17	0.28	0.54	0.36	0.34	0.29	0.38	0.38	0.33	-0.38	0.59	0.52
rs1131095	3	49676792	-0.10	0.09	0.25	-0.21	0.16	0.19	0.01	0.11	0.95	-0.17	0.28	0.55
rs11548656	16	81883307	0.27	0.16	0.09	0.20	0.25	0.42	0.17	0.24	0.49	0.06	0.46	0.90
rs11581607	1	67242007	-0.04	0.04	0.29	-0.02	0.09	0.86	0.01	0.05	0.80	-0.12	0.17	0.47
rs11669299	19	10385945	0.11	0.16	0.49	0.37	0.30	0.21	/	/	/	0.96	0.54	0.07
rs11677002	2	28391534	-0.19	0.15	0.20	0.18	0.27	0.50	-0.05	0.20	0.82	-0.79	0.48	0.10
rs11734570	4	38586832	-0.17	0.21	0.41	-0.74	0.36	0.04	0.06	0.33	0.85	-0.27	0.65	0.68
rs11768365	7	6505557	0.26	0.20	0.21	0.28	0.35	0.41	0.25	0.27	0.36	-0.26	0.62	0.67
rs117981694	12	40428296	-0.16	0.13	0.23	0.06	0.22	0.79	0.60	0.16	<0.01	0.54	0.41	0.19
rs12136659	1	172875110	-0.27	0.19	0.15	-0.23	0.31	0.45	0.23	0.23	0.31	-0.61	0.57	0.28
rs1250573	10	79282718	-0.29	0.15	0.06	0.14	0.27	0.59	0.08	0.25	0.75	-1.03	0.48	0.03

rs1268339	1	1280044	0.07	0.21	0.73	-0.23	0.30	0.45	-0.22	0.28	0.44	0.27	0.53	0.61
rs12825700	12	68099200	-0.19	0.11	0.08	-0.19	0.20	0.35	0.09	0.13	0.50	0.15	0.36	0.69
rs12936409	17	39887396	-0.01	0.10	0.90	0.31	0.18	0.08	0.14	0.12	0.23	0.29	0.32	0.37
rs1297264	21	15443698	0.05	0.09	0.57	-0.14	0.18	0.43	0.37	0.12	<0.01	-0.22	0.31	0.48
rs1317209	1	19813543	0.12	0.15	0.44	-0.24	0.26	0.36	0.02	0.25	0.94	0.39	0.46	0.40
rs1336900	1	150706557	0.03	0.16	0.87	-0.05	0.30	0.86	0.25	0.28	0.36	-0.12	0.54	0.83
rs13422838	2	186638119	-0.35	0.20	0.07	-0.99	0.43	0.02	/	/	/	0.97	0.76	0.21
rs140933577	13	40262133	<0.01	0.18	1.00	/	/	/	/	/	/	/	/	/
rs143210366	6	31524576	0.10	0.13	0.45	-0.19	0.19	0.33	/	/	/	-0.23	0.37	0.53
rs1445004	5	40414317	-0.02	0.08	0.83	-0.10	0.15	0.49	0.02	0.10	0.84	0.88	0.27	<0.01
rs145568234	6	32279268	0.06	0.12	0.60	-0.36	0.25	0.15	0.10	0.10	0.31	0.07	0.48	0.89
rs1456896	7	50264865	0.08	0.17	0.62	0.28	0.32	0.38	-0.30	0.21	0.15	0.89	0.56	0.12
rs149169037	7	20537675	-0.09	0.19	0.63	/	/	/	/	/	/	/	/	/
rs154873	20	59279977	-0.04	0.18	0.81	0.20	0.32	0.52	0.04	0.26	0.87	0.01	0.57	0.98
rs1558619	2	102315090	-0.20	0.16	0.22	0.14	0.30	0.64	0.31	0.21	0.13	0.35	0.53	0.50
rs16940202	16	85980635	-0.19	0.16	0.22	0.49	0.32	0.12	0.01	0.19	0.97	0.54	0.56	0.34
rs17656349	5	150226431	0.02	0.19	0.90	-0.04	0.35	0.91	0.25	0.31	0.41	-0.18	0.63	0.78
rs1864239	15	79913012	/	/	/	-0.01	0.04	0.86	<0.01	0.14	0.98	0.06	0.07	0.42
rs194746	14	68816170	-0.13	0.16	0.41	<0.01	0.30	1.00	-0.28	0.21	0.18	0.67	0.54	0.21
rs212402	6	159051263	0.43	0.20	0.03	0.50	0.37	0.18	0.17	0.27	0.51	-1.19	0.66	0.07
rs2301127	16	11273620	-0.68	0.18	<0.01	0.26	0.33	0.42	0.19	0.22	0.39	2.17	0.58	<0.01
rs2384352	16	11273620	-0.08	0.15	0.61	0.22	0.28	0.42	-0.25	0.13	0.05	1.26	0.49	0.01
rs2413583	22	39263768	-0.08	0.11	0.44	-0.19	0.23	0.40	-0.25	0.28	0.37	0.09	0.40	0.82
rs243505	17	148738247	-0.12	0.18	0.50	-0.04	0.32	0.91	/	/	/	0.01	0.58	0.99
rs2593855	3	71126344	0.03	0.18	0.85	/	/	/	/	/	/	/	/	/
rs2836881	21	39094373	-0.02	0.09	0.84	-0.20	0.18	0.26	-0.01	0.12	0.90	-0.20	0.32	0.53
rs28374519	16	28478021	-0.03	0.14	0.85	0.05	0.24	0.83	/	/	/	0.38	0.43	0.38
rs2838517	21	44193942	0.03	0.11	0.80	/	/	/	0.07	0.14	0.59	/	/	/

rs3024493	1	206770623	0.15	0.10	0.14	0.07	0.18	0.70	-0.03	0.13	0.84	0.12	0.33	0.71
rs341295	5	112513193	-0.01	0.20	0.98	-0.36	0.36	0.32	0.10	0.32	0.75	0.64	0.64	0.32
rs34140409	6	31955877	0.13	0.15	0.39	-0.09	0.33	0.78	/	/	/	1.64	0.61	0.01
rs35171809	6	167019278	-0.18	0.13	0.15	0.24	0.23	0.31	-0.35	0.19	0.06	-0.97	0.42	0.02
rs3792111	2	233271044	-0.01	0.10	0.89	0.14	0.18	0.44	-0.02	0.12	0.88	-0.01	0.32	0.98
rs3820330	1	19815920	0.07	0.17	0.68	-0.18	0.31	0.56	0.08	0.23	0.73	-0.71	0.55	0.20
rs3829110	9	136374746	-0.08	0.09	0.39	-0.19	0.16	0.25	0.20	0.11	0.06	-0.01	0.29	0.97
rs3850378	14	87951173	0.01	0.16	0.92	/	/	/	-0.12	0.19	0.55	/	/	/
rs3897234	13	26967893	0.28	0.17	0.10	-0.08	0.30	0.79	-0.14	0.22	0.51	0.27	0.54	0.61
rs4256018	20	6113242	-0.17	0.20	0.38	-0.08	0.41	0.84	0.49	0.25	0.05	-0.07	0.73	0.92
rs4276914	1	155169753	-0.11	0.17	0.53	0.12	0.32	0.70	-0.27	0.22	0.22	0.60	0.57	0.30
rs4380956	8	125516832	-0.13	0.16	0.39	0.05	0.31	0.88	-0.04	0.19	0.85	1.75	0.55	<0.01
rs4676408	2	240634984	-0.08	0.14	0.57	<0.01	0.26	0.98	-0.07	0.18	0.72	0.44	0.46	0.34
rs4807569	19	1123379	0.09	0.13	0.52	-0.07	0.23	0.76	0.10	0.21	0.65	-0.19	0.42	0.65
rs4957256	5	40207040	0.02	0.15	0.88	0.35	0.24	0.15	<0.01	0.20	0.99	0.52	0.42	0.22
rs503734	3	101304904	-0.12	0.20	0.55	0.26	0.37	0.48	-0.20	0.26	0.44	1.08	0.65	0.10
rs55946629	2	43624107	<0.01	0.16	0.98	0.39	0.36	0.28	-0.05	0.22	0.82	0.10	0.63	0.88
rs56062135	15	67163292	-0.14	0.12	0.25	0.26	0.21	0.20	-0.06	0.14	0.70	0.22	0.37	0.55
rs56116661	13	188683372	-0.33	0.18	0.07	-0.31	0.30	0.30	-0.22	0.28	0.45	0.59	0.54	0.27
rs56235845	5	177371039	-0.22	0.17	0.19	/	/	/	/	/	/	/	/	/
rs5754100	22	21561877	-0.27	0.14	0.06	0.09	0.21	0.67	/	/	/	-0.70	0.38	0.07
rs5763793	22	30130643	0.04	0.19	0.84	0.16	0.35	0.66	0.15	0.24	0.53	0.25	0.62	0.69
rs6017342	20	44436388	0.24	0.13	0.08	0.06	0.22	0.78	-0.06	0.15	0.68	-0.32	0.39	0.42
rs6062496	20	63697746	0.08	0.11	0.48	0.30	0.19	0.11	-0.31	0.13	0.02	0.31	0.34	0.37
rs6063502	20	50339058	0.09	0.21	0.66	-0.84	0.35	0.02	0.38	0.33	0.25	-0.14	0.63	0.83
rs62126610	19	33257277	-0.19	0.14	0.17	/	/	/	/	/	/	/	/	/
rs62183956	2	218181399	0.35	0.18	0.05	-0.05	0.33	0.88	-0.45	0.23	0.04	0.61	0.58	0.30
rs62324212	4	122639784	0.27	0.16	0.09	-0.32	0.29	0.27	-0.04	0.22	0.86	0.99	0.52	0.05

rs62378712	5	159187037	-0.20	0.20	0.32	-0.26	0.40	0.51	-0.16	0.28	0.57	-0.25	0.70	0.72
rs62408218	6	90222139	-0.25	0.17	0.15	-0.82	0.35	0.02	0.05	0.22	0.82	-0.63	0.62	0.31
rs62482552	7	100924735	-0.24	0.20	0.22	-0.32	0.35	0.36	0.23	0.27	0.39	-0.83	0.63	0.18
rs6457681	6	32805720	0.03	0.10	0.79	/	/	/	0.24	0.14	0.08	/	/	/
rs6579807	5	150907283	-0.09	0.16	0.55	-0.05	0.30	0.86	0.17	0.20	0.38	-1.24	0.53	0.02
rs6584282	10	99526738	0.06	0.09	0.48	-0.31	0.17	0.06	0.15	0.11	0.17	-0.06	0.30	0.83
rs6740847	2	181443625	-0.03	0.15	0.82	-0.22	0.28	0.43	-0.04	0.21	0.84	0.82	0.50	0.10
rs6873866	5	96912106	-0.05	0.15	0.74	/	/	/	/	/	/	/	/	/
rs6933404	6	137638098	0.45	0.20	0.02	-0.13	0.38	0.73	-0.34	0.24	0.16	-0.19	0.66	0.77
rs714910	17	34290246	-0.02	0.16	0.92	0.06	0.28	0.82	-0.27	0.20	0.18	0.41	0.50	0.41
rs7190426	16	23844532	-0.07	0.19	0.72	-0.33	0.42	0.43	0.10	0.26	0.69	0.14	0.75	0.85
rs7256518	19	10515699	0.03	0.19	0.87	0.14	0.36	0.70	0.08	0.23	0.72	1.15	0.64	0.07
rs72852162	2	145486323	/	/	/	0.16	0.33	0.64	/	/	/	0.36	0.59	0.55
rs744166	17	42362183	-0.06	0.20	0.76	-0.04	0.23	0.88	0.18	0.16	0.26	-0.88	0.41	0.03
rs749910	16	50724938	0.02	0.12	0.84	-0.04	0.18	0.82	0.13	0.10	0.17	0.26	0.32	0.42
rs7532133	1	160881744	-0.03	0.19	0.86	-0.08	0.34	0.81	0.07	0.23	0.76	0.02	0.61	0.97
rs755374	5	159402286	-0.03	0.09	0.69	0.13	0.16	0.41	-0.03	0.11	0.78	0.04	0.28	0.89
rs7608697	2	60977506	-0.09	0.10	0.37	0.21	0.19	0.25	-0.33	0.12	0.01	0.56	0.33	0.09
rs76286777	2	24972708	0.07	0.17	0.69	0.76	0.37	0.04	-0.07	0.21	0.73	0.55	0.65	0.40
rs78771661	2	22129337	-0.30	0.18	0.10	0.16	0.35	0.64	-0.02	0.22	0.91	0.52	0.60	0.38
rs7918084	10	92669710	0.27	0.19	0.16	-0.33	0.36	0.35	-0.12	0.25	0.62	-1.35	0.63	0.03
rs80262450	18	12818923	-0.18	0.14	0.20	0.19	0.24	0.45	-0.10	0.18	0.57	-0.75	0.44	0.08
rs938650	8	128540294	-0.04	0.19	0.85	0.30	0.36	0.41	-0.29	0.23	0.21	0.43	0.66	0.51
rs9934775	16	50349166	-0.03	0.16	0.86	-0.26	0.33	0.42	0.10	0.27	0.72	-0.84	0.57	0.14
All - Inverse variance weighted			-0.03	0.01	0.03	-0.01	0.02	0.58	0.01	0.02	0.50	0.08	0.05	0.10
All - MR Egger			-0.02	0.03	0.66	-0.01	0.04	0.76	0.05	0.04	0.24	0.03	0.09	0.75

AD: Alzheimer's disease; ALS: amyotrophic lateral sclerosis; Chr: chromosome; IBD: inflammatory bowel disease; IVW: Inverse variance weighted;

MS: multiple sclerosis; PD: Parkinson's disease; SE: standard error; SNP: single-nucleotide polymorphism.

Supplementary Table S3. Mendelian randomization (MR) analysis for the causality ulcerative colitis (UC) and Crohn's disease (CD) on neurodegenerative disorders.

Exposure	Outcome	Method	SNPs	Mendelian randomization			Heterogeneity		
				OR	LL	UL	P	Q	Q_P
CD	ALS	IVW	78	0.97	0.95	1.00	0.02	77.55	0.46
		MR Egger	78	1.02	0.96	1.09	0.52	75.01	0.51
		Weighted median	78	0.99	0.96	1.02	0.50		
		Weighted mode	78	1.00	0.94	1.05	0.87		
		MR PERSSO	78	0.97	0.95	0.99	0.02		
	AD	IVW	74	1.00	0.96	1.05	0.94	49.58	0.45
		MR Egger	74	1.02	0.90	1.15	0.76	45.98	0.56
		Weighted median	74	1.02	0.96	1.08	0.56		
		Weighted mode	74	1.03	0.93	1.13	0.59		
	PD	IVW	71	1.01	0.98	1.05	0.43	94.55	0.03
		MR Egger	71	1.09	1.00	1.18	0.05	89.96	0.05
		Weighted median	71	1.01	0.96	1.06	0.67		
		Weighted mode	71	1.00	0.94	1.07	0.97		
	MS	IVW	74	1.03	0.93	1.15	0.53	148.87	<0.01
		MR Egger	74	0.98	0.74	1.30	0.91	148.58	<0.01
		Weighted median	74	1.07	0.94	1.21	0.30		
		Weighted mode	74	1.07	0.90	1.28	0.46		
UC	ALS	IVW	52	1.01	0.98	1.03	0.68	40.34	0.86
		MR Egger	52	1.02	0.94	1.11	0.60	40.18	0.84
		Weighted median	52	1.00	0.96	1.04	0.94		
		Weighted mode	52	1.02	0.95	1.10	0.55		
	AD	IVW	50	0.99	0.94	1.04	0.73	49.58	0.45
		MR Egger	50	1.14	0.98	1.33	0.10	45.98	0.56
		Weighted median	50	0.95	0.88	1.04	0.26		
		Weighted mode	50	0.90	0.72	1.11	0.32		
	PD	IVW	49	0.99	0.96	1.03	0.78	51.30	0.35
		MR Egger	49	1.01	0.91	1.13	0.80	51.15	0.31
		Weighted median	49	1.01	0.96	1.06	0.78		
		Weighted mode	49	1.02	0.94	1.10	0.68		
	MS	IVW	49	1.11	0.95	1.30	0.20	121.31	<0.01
		MR Egger	49	0.93	0.54	1.60	0.78	120.14	<0.01
		Weighted median	49	1.03	0.89	1.19	0.67		
		Weighted mode	49	0.92	0.71	1.18	0.49		

AD: Alzheimer's disease; ALS: amyotrophic lateral sclerosis; CD: Crohn's disease; IVW: Inverse variance weighted; LL: lower limits of odds ratio; OR: Odds ratio; PD: Parkinson's disease; SNP: single-nucleotide polymorphism; UC: ulcerative colitis; MS: multiple sclerosis; UL: upper limits of odds ratio.

Supplementary Table S4. Assessment of pleiotropy.

Exposure	Outcome	MR-Egger intercept			MR PRESSO global test	
		Intercept	SE	<i>P</i>	RSSobs	<i>P</i>
IBD	ALS	-0.00201	0.004186	0.632572	115.3298	0.211
	AD	-0.00011	0.005126	0.983122	91.2978	0.600
	PD	-0.00558	0.005688	0.329295	116.9115	0.033
	MS	0.00958	0.012046	0.428585	161.6244	<0.001
UC	ALS	-0.00252	0.006287	0.690204	42.1793	0.865
	AD	-0.02302	0.012122	0.063533	53.1721	0.383
	PD	-0.00328	0.008716	0.708321	53.6505	0.306
	MS	0.027634	0.040836	0.501911	126.469	<0.001
CD	ALS	-0.00814	0.005105	0.114797	79.8534	0.461
	AD	-0.02302	0.012122	0.063533	53.1721	0.402
	PD	-0.01352	0.007206	0.064890	97.5203	0.033
	MS	0.00877	0.023651	0.712005	152.7905	<0.001

AD: Alzheimer's disease; ALS: amyotrophic lateral sclerosis; Chr: chromosome; IBD: inflammatory bowel disease; IVW: Inverse variance weighted; MS: multiple sclerosis; PD: Parkinson's disease; SE: standard error.

Supplementary Table S5. Mendelian randomization (MR) analysis for the causality of neurodegenerative disorders on inflammatory bowel disease (IBD), including ulcerative colitis (UC) and Crohn's disease (CD).

Exposure	Outcome	Method	SNPs	Mendelian randomization			
				OR	LL	UL	P
ALS	IBD	IVW	4	1.00	0.89	1.12	1.00
		MR Egger	4	0.92	0.70	1.20	0.59
		Weighted median	4	1.03	0.90	1.19	0.65
		Weighted mode	4	1.05	0.91	1.20	0.57
	UC	IVW	4	0.98	0.82	1.17	0.78
		MR Egger	4	0.77	0.54	1.10	0.29
		Weighted median	4	1.04	0.87	1.23	0.69
		Weighted mode	4	1.04	0.85	1.27	0.75
	CD	IVW	4	1.01	0.86	1.18	0.94
		MR Egger	4	1.04	0.67	1.62	0.87
		Weighted median	4	1.06	0.90	1.25	0.50
		Weighted mode	4	1.08	0.90	1.29	0.47
AD	IBD	IVW	2	1.01	0.98	1.04	0.58
		MR Egger	/	/	/	/	/
		Weighted median	/	/	/	/	/
		Weighted mode	/	/	/	/	/
	UC	IVW	2	1.00	0.96	1.03	0.82
		MR Egger	/	/	/	/	/
		Weighted median	/	/	/	/	/
		Weighted mode	/	/	/	/	/
	CD	IVW	2	1.00	0.97	1.04	0.78
		MR Egger	/	/	/	/	/
		Weighted median	/	/	/	/	/
		Weighted mode	/	/	/	/	/
PD	IBD	IVW	17	1.03	0.99	1.08	0.19
		MR Egger	17	1.07	0.96	1.19	0.25
		Weighted median	17	1.03	0.97	1.10	0.32
		Weighted mode	17	1.03	0.94	1.12	0.56
	UC	IVW	17	1.03	0.97	1.09	0.30
		MR Egger	17	1.02	0.89	1.18	0.74
		Weighted median	17	1.06	0.98	1.14	0.15
		Weighted mode	17	1.09	0.97	1.22	0.16
	CD	IVW	17	1.04	0.98	1.10	0.24
		MR Egger	17	1.08	0.94	1.24	0.31
		Weighted median	17	1.03	0.95	1.12	0.48
		Weighted mode	17	1.01	0.88	1.15	0.89
MS	IBD	IVW	4	1.11	1.04	1.18	<0.01
		MR Egger	4	1.54	1.02	2.33	0.18
		Weighted median	4	1.11	1.07	1.14	<0.01

	Weighted mode	4	1.14	1.10	1.18	0.01
UC	IVW	4	1.18	1.03	1.34	0.02
	MR Egger	4	2.71	1.19	6.18	0.14
	Weighted median	4	1.11	1.04	1.18	<0.01
	Weighted mode	4	1.26	1.20	1.33	<0.01
CD	IVW	4	1.04	0.98	1.11	0.23
	MR Egger	4	0.86	0.48	1.54	0.66
	Weighted median	4	1.02	0.98	1.07	0.28
	Weighted mode	4	1.02	0.98	1.06	0.41

IBD: inflammatory bowel disease; AD: Alzheimer's disease; ALS: amyotrophic lateral sclerosis; CD: Crohn's disease; IVW: Inverse variance weighted; LL: lower limits of odds ratio; MS: multiple sclerosis; OR: Odds ratio; PD: Parkinson's disease; SNP: single-nucleotide polymorphism; UC: ulcerative colitis; UL: upper limits of odds ratio.

Supplementary Table S6. Genetic correlation between inflammatory bowel disease (IBD) and amyotrophic lateral sclerosis (ALS).

ρ	SE	<i>P</i>	Correlation
-0.0472	0.0057	8.60×10^{-17}	-0.3255

Supplementary Table S7. Functional enrichment of shared risk loci.

Category	Pathway (ID)	<i>P</i> value	Adjusted <i>P</i> value
Biological Process	regulation of ER to Golgi vesicle-mediated transport (GO:0060628)	0.0013	0.0149
	negative regulation of autophagosome assembly (GO:1902902)	0.0019	0.0149
	regulation of establishment of protein localization (GO:0070201)	0.0022	0.0149
	negative regulation of macroautophagy (GO:0016242)	0.0038	0.0149
	regulation of protein transport (GO:0051223)	0.0041	0.0149
	regulation of autophagosome assembly (GO:2000785)	0.0052	0.0149
	negative regulation of organelle assembly (GO:1902116)	0.0052	0.0149
	regulation of transport (GO:0051049)	0.0055	0.0149
	regulation of intracellular transport (GO:0032386)	0.0058	0.0149
	COPII vesicle coating (GO:0048208)	0.0094	0.0180
	vesicle coating (GO:0006901)	0.0094	0.0180
	vesicle targeting, rough ER to cis-Golgi (GO:0048207)	0.0094	0.0180
	COPII-coated vesicle budding (GO:0090114)	0.0104	0.0185
	retrograde vesicle-mediated transport, Golgi to endoplasmic reticulum (GO:0006890)	0.0126	0.0191
	retrograde transport, endosome to Golgi (GO:0042147)	0.0131	0.0191
	post-Golgi vesicle-mediated transport (GO:0006892)	0.0132	0.0191
	regulation of vesicle-mediated transport (GO:0060627)	0.0143	0.0193
	cytosolic transport (GO:0016482)	0.0173	0.0221
	endoplasmic reticulum to Golgi vesicle-mediated transport (GO:0006888)	0.0274	0.0332
	protein-containing complex assembly (GO:0065003)	0.0395	0.0454
Cellular Component	Golgi-associated vesicle (GO:0005798)	0.0070	0.0298
	cis-Golgi network (GO:0005801)	0.0085	0.0298
Molecular Function	syntaxin binding (GO:0019905)	0.0092	0.0092

GO, Gene Ontology.