

SUPPLEMENTARY MATERIAL

Supplementary Table 1. Key cognitive outcome measures

Cognitive measure name	Abbreviation	Brief description
Spatial working memory, between-errors total	SWMBE	The number of times a subject incorrectly revisits a box in which a token had already been found.
Spatial working memory, strategy	SWMS	The number of times a subject starts a new search pattern from the same box they started with earlier.
One-Touch Stockings of Cambridge, Problems solved on the first choice	OTSPSFC	The total number of assessed trials where the subject chose the correct answer on their first attempt.
One-Touch Stockings of Cambridge, The average latency for the first choice	OTSMDLFC	Average latency, measured from the appearance of the stocking balls to the first box choice, was taken by the subject.
One-Touch Stockings of Cambridge, Average of choices to correct	OTSMCC	The average number of box selections that the subject took before choosing the correct box.
One-Touch Stockings of Cambridge, Average latency to correct	OTSMLC	Average latency, measured from the appearance of the stocking balls to the choice of the correct box, was taken by the subject.
Paired Associates Learning, Adjusted total errors	PALTEA	The number of times the subject chose the wrong box for a stimulus in assessment problems plus an adjustment to the estimated number of errors they would have made in any problems, trials, and recalls.
Paired Associates Learning, Memory score on the first attempt	PALFAMS	The number of times the subject chooses the correct box on the first attempt to remember its location.
Paired Associates Learning, Mean errors to success	PALMETS	The average number of attempts to complete a test stage
Pattern Recognition Memory, the percentage of correct answers, immediate	PRMPCI	Number of patterns correctly selected by the subject in the immediate "forced-choice" condition, expressed as a percentage
Pattern Recognition Memory, the percentage of correct answers, delayed	PRMPCD	The number of patterns correctly selected by the subject in the delayed "forced-choice" condition expressed as a percentage.
Verbal Recognition Memory, Immediate verbal recognition, total correct answers	VRMIRTC	Total target words correctly recognized in the immediate recognition phase, plus the total number of distracting words that the subject correctly rejects.
Verbal Recognition Memory, Delayed verbal recognition, total correct answers	VRMDRTC	The total number of target words correctly recognized in the delayed recognition phase, plus the total number of distracting words that the subject correctly rejects.
Verbal Recognition Memory, Free verbal recall, different stimuli	VRMFRDS	Total number of different stimuli that are correctly remembered by the subject in the phase of free word list recall
Single-choice median reaction time	RTISMDRT	Median time taken to release the button after presenting a target stimulus. Measured in milliseconds
Single-choice median movement time	RTISMDMT	Median time taken to release the button and select the target stimulus after it flashes yellow on the screen. It is measured in milliseconds.
Five-choice median reaction time	RTIFMDRT	Median time taken to release the button after the target stimulus flashes yellow on the screen. Measured in milliseconds
Five-choice median movement time	RTIFMDMT	Median time taken to release the button and select the target stimulus after it flashes yellow on the screen. It is measured in milliseconds.

Supplementary Table 2. TBSS results significantly reduced AFD_{total} in the COV+ group compared to the COV- group. The anatomical locations were determined by referring to the JHU white-matter tractography atlas. The value after each region indicates the percentage probability of the cluster belonging to the given atlas label.

Cluster	White matter tract	p-value	Voxels	MNI (x y z) (mm)		
corrected p-value < 0.05						
AFDtotal / COV- > COV+						
1	Anterior thalamic radiation L:0.3928	0.026	4,515	-35	-19	34
	Corticospinal tract L:4.5856					
	Cingulum (cingulate gyrus) L:0.0829					
	Inferior fronto-occipital fasciculus L:0.0108					
	Inferior longitudinal fasciculus L:0.0775					
	Superior longitudinal fasciculus L:12.4739					
	Superior longitudinal fasciculus (temporal part) L:4.3892					

Abbreviations: TBSS, tract-based spatial statistics; MNI, Montreal Neurological Institute; L, an abbreviation for the left hemisphere, R, abbreviation for the right hemisphere; AFD_{total}, voxel-wise apparent fiber density.

Supplementary Table 3. TBSS results show a negative correlation between ADt and CFQ-11 in the COV+ group. The anatomical locations were determined by referring to the JHU white-matter tractography atlas. The value after each region indicates the percentage probability of the cluster belonging to the given atlas label.

Cluster	White matter tract	p-value	Voxels	MNI (x y z) (mm)		
corrected p-value < 0.05						
Negative correlation between ADt and CFQ-11						
1	Anterior thalamic radiation L:7.3333 Cingulum (cingulate gyrus) L:1.8889 Forceps minor:47.8889 Inferior fronto-occipital fasciculus L:1.6667 Uncinate fasciculus L:0.3333	0.044	53	-19	48	10
2	Anterior thalamic radiation L:6.2500 Cingulum (cingulate gyrus) L:2.6250 Forceps minor:32.8750 Inferior fronto-occipital fasciculus L:1.1250	0.041	60	-17	45	20
3	Cingulum (cingulate gyrus) L:6.9444 Forceps minor:32.7778	0.036	144	-12	23	19
4	Anterior thalamic radiation R:10.4706 Cingulum (cingulate gyrus) R:0.0294 Forceps minor:42.7647 Inferior fronto-occipital fasciculus R:1.4118 Uncinate fasciculus R:0.0882	0.034	328	18	52	15
5	Anterior thalamic radiation L:1.6008 Anterior thalamic radiation R:1.3787 Corticospinal tract L:2.3020 Corticospinal tract R:2.2288 Cingulum (cingulate gyrus) L:0.2892 Cingulum (cingulate gyrus) R:0.0662 Cingulum (hippocampus) L:0.0006 Forceps major:0.2496 Forceps minor:0.0256 Inferior fronto-occipital fasciculus L:1.2630 Inferior fronto-occipital fasciculus R:1.2924 Inferior longitudinal fasciculus L:0.3944 Inferior longitudinal fasciculus R:0.1521 Superior longitudinal fasciculus L:2.1668 Superior longitudinal fasciculus R:1.7983 Uncinate fasciculus L:0.4263 Uncinate fasciculus R:0.2793 Superior longitudinal fasciculus (temporal part) L:0.8453 Superior longitudinal fasciculus (temporal part) R:0.5638	<0.001	24,840	14	-18	-14

Abbreviations: TBSS, tract-based spatial statistics; MNI, Montreal Neurological Institute; L, an abbreviation for the left hemisphere, R, abbreviation for the right hemisphere; ADt, tissue axial diffusivity.

Supplementary Table 4. TBSS results show a negative correlation between FAt and CFQ-11 in the COV+ group. The anatomical locations were determined by referring to the JHU white-matter tractography atlas. The value after each region indicates the percentage probability of the cluster belonging to the given atlas label.

Cluster	White matter tract	p-value	Voxels	MNI (x y z) (mm)		
corrected p-value < 0.05						
Negative correlation between FAt and CFQ-11						
1	Corticospinal tract R:27.0000	0.049	13	21	-33	51
2	Corticospinal tract R:10.0806 Superior longitudinal fasciculus R:16.4677 Superior longitudinal fasciculus (temporal part) R:5.1290	0.036	522	27	-16	30

Abbreviations: TBSS, tract-based spatial statistics; MNI, Montreal Neurological Institute; R, abbreviation for the right hemisphere; FAt, tissue fractional anisotropy.

Supplementary Table 5. Comparison of tract-average FW, FAt, and FD measures between control and COVID-19 groups, adjusting for multiple comparisons (FDR). Age and sex were included as covariates.

Tract	N	FW			FAt			FD		
		statistic	p-value	adj p	statistic	p-value	adj p	statistic	p-value	adj p
Association Tracts										
AF (L)	83	1.3404	0.1840	ns	-1.4041	0.1642	ns	-2.7668	0.0070	0.0176
AF (R)	83	0.0777	0.9382	ns	-1.4549	0.1497	ns	-1.1706	0.2453	ns
CG (L)	83	0.4322	0.6668	ns	-1.1128	0.2692	ns	-2.0862	0.0402	ns
CG (R)	83	0.6208	0.5365	ns	-0.4699	0.6397	ns	-1.2945	0.1993	ns
FX (L)	83	-1.2586	0.2119	ns	0.2182	0.8279	ns	0.0838	0.9334	ns
FX (R)	83	-1.0000	0.2883	ns	-0.3594	0.7203	ns	-0.8627	0.3909	ns
IFOF (L)	83	0.2981	0.7664	ns	-0.5843	0.5607	ns	-1.1916	0.2370	ns
IFOF (R)	83	-1.0898	0.2791	ns	-0.5276	0.5992	ns	-0.8180	0.4158	ns
ILF (L)	83	0.4894	0.6259	ns	-0.3538	0.7245	ns	-0.8028	0.4245	ns
ILF (R)	83	-1.2750	0.2060	ns	-0.3735	0.7098	ns	0.7067	0.4818	ns
SLF1 (L)	82	0.7935	0.4299	ns	-0.2917	0.7713	ns	-1.1157	0.2680	ns
SLF1 (R)	82	0.1050	0.9167	ns	-0.0680	0.9460	ns	-1.0808	0.2831	ns
SLF2 (L)	83	0.7492	0.4560	ns	-1.9440	0.0555	ns	-4.1441	0.0001	0.0003
SLF2 (R)	83	0.3672	0.7145	ns	-0.5532	0.5817	ns	-0.9890	0.3257	ns
SLF3 (L)	83	1.3674	0.1754	ns	-1.2180	0.2268	ns	-2.4932	0.0147	0.0338
SLF3 (R)	83	0.0050	0.9960	ns	-0.6692	0.5053	ns	-1.1172	0.2673	ns
UF (L)	83	1.1968	0.2350	ns	-0.8132	0.4185	ns	-0.9967	0.3219	ns
UF (R)	83	0.8023	0.4248	ns	-0.6405	0.5237	ns	-2.0819	0.0406	ns
Projection Tracts										
CR (L)	83	1.0810	0.2830	ns	-1.7953	0.0764	ns	-1.7566	0.0829	ns
CR (R)	83	0.6288	0.5313	ns	-0.9705	0.3348	ns	-0.9170	0.3619	ns
CST (L)	83	0.6414	0.5231	ns	-1.7264	0.0882	ns	-1.7133	0.0906	ns
CST (R)	83	1.1909	0.2373	ns	-0.6567	0.5133	ns	-0.7963	0.4282	ns
OR (L)	83	0.4395	0.6615	ns	-1.1504	0.2534	ns	-1.5422	0.1270	ns
OR (R)	83	-1.4913	0.1399	ns	-1.1942	0.2360	ns	-0.2631	0.7932	ns
Corpus Callosum										
Rostrum	83	-0.0750	0.9404	ns	-0.7661	0.4459	ns	-1.2245	0.2244	ns
Genu (A)	83	0.0628	0.9501	ns	-0.4008	0.6896	ns	-0.6928	0.4905	ns
Genu (P)	83	0.2716	0.7867	ns	-0.3049	0.7613	ns	-0.5060	0.6143	ns
Rostral Body	83	0.4940	0.6226	ns	-0.3849	0.7014	ns	-1.0515	0.2962	ns
Mid-Body (A)	83	0.8628	0.3909	ns	-0.8193	0.4151	ns	-1.3758	0.1728	ns
Mid-Body (P)	83	1.7139	0.0905	ns	-1.1160	0.2678	ns	-1.8233	0.0720	ns
Isthmus	83	0.6921	0.4909	ns	-0.1809	0.8569	ns	-0.9417	0.3492	ns
Splenium	83	0.8067	0.4223	ns	-2.0815	0.0406	ns	-1.8938	0.0619	ns
Cerebellar Tracts										
MCP	83	-0.5661	0.5729	ns	-1.6840	0.0961	ns	0.7375	0.4630	ns
SCP (L)	83	-0.3679	0.7139	ns	-0.7190	0.4742	ns	0.0006	0.9995	ns
SCP (R)	83	0.1060	0.9158	ns	0.2269	0.8211	ns	0.6936	0.4900	ns

Abbreviations: AF, arcuate fasciculus; CG, cingulum; IFOF, inferior frontal occipital fasciculus; ILF, inferior longitudinal fasciculus; SLF, superior longitudinal fasciculus; UF, uncinate fasciculus; CR, corona radiata; CST, corticospinal tract; OR, optic radiation; SCP, superior cerebellar peduncle; MCP, middle cerebellar peduncle; A, anterior; P, posterior; L, left; R, right; FDR, false discovery rate; FW, free-water; FAt, tissue fractional anisotropy; FD, fiber-specific apparent fiber density; ns, not significant; adj, adjusted. Significant p values at a threshold of $p < 0.05$ are indicated in bold font.

Supplementary Table 6. Comparison of tract-average MDt, RDt, and ADt measures between control and COVID-19 groups, adjusting for multiple comparisons (FDR). Age and sex were included as covariates.

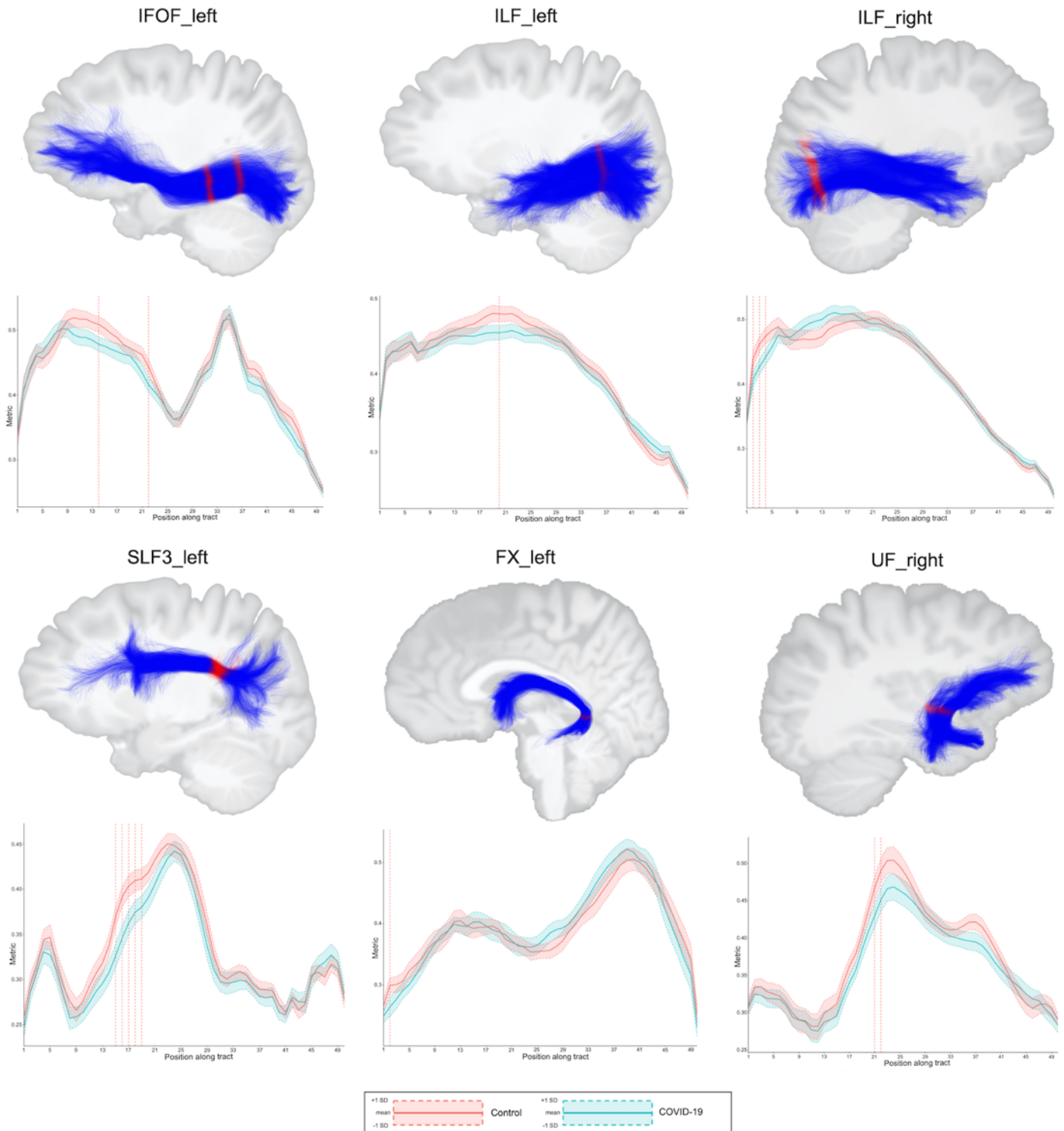
Tract	N	MDt			RDt			ADt		
		statistic	p-value	adj p	statistic	p-value	adj p	statistic	p-value	adj p
Association Tracts										
AF (L)	83	2.1929	0.0313	ns	2.0792	0.0408	ns	1.5321	0.1295	ns
AF (R)	83	-0.8679	0.3881	ns	0.2660	0.7909	ns	-2.6631	0.0094	0.0285
CG (L)	83	1.3288	0.1878	ns	1.4035	0.1644	ns	0.2878	0.7742	ns
CG (R)	83	0.0564	0.9552	ns	0.2337	0.8158	ns	-0.2846	0.7767	ns
FX (L)	83	-1.8241	0.0719	ns	-1.6269	0.1077	ns	-1.8417	0.0693	ns
FX (R)	83	-0.7085	0.4807	ns	-0.7633	0.4475	ns	-0.6263	0.5329	ns
IFOF (L)	83	0.6257	0.5333	ns	0.7522	0.4541	ns	-0.1598	0.8734	ns
IFOF (R)	83	-1.1838	0.2401	ns	-0.2003	0.8418	ns	-1.9240	0.0580	ns
ILF (L)	83	0.6882	0.4934	ns	0.4707	0.6391	ns	0.5611	0.5763	ns
ILF (R)	83	-1.1994	0.2340	ns	-0.5102	0.6113	ns	-1.4912	0.1399	ns
SLF1 (L)	82	1.6094	0.1116	ns	1.0080	0.3166	ns	1.8319	0.0708	ns
SLF1 (R)	82	-0.1877	0.8516	ns	-0.2141	0.8310	ns	-0.0399	0.9683	ns
SLF2 (L)	83	2.0859	0.0402	ns	2.3632	0.0206	0.0430	0.8378	0.4047	ns
SLF2 (R)	83	-0.6642	0.5085	ns	-0.0191	0.9848	ns	-1.4407	0.1536	ns
SLF3 (L)	83	2.1166	0.0374	ns	1.9132	0.0593	ns	1.6985	0.0933	ns
SLF3 (R)	83	-0.8427	0.4019	ns	-0.0810	0.9357	ns	-1.9718	0.0521	ns
UF (L)	83	1.1821	0.2407	ns	1.1402	0.2577	ns	0.4096	0.6832	ns
UF (R)	83	0.0332	0.9736	ns	0.5227	0.6027	ns	-0.8499	0.3979	ns
Projection Tracts										
L CR	83	1.4985	0.1380	ns	1.9211	0.0583	ns	0.0287	0.9772	ns
R CR	83	-0.5312	0.5968	ns	0.3399	0.7348	ns	-1.3631	0.1767	ns
L CST	83	1.0825	0.2823	ns	1.6493	0.1031	ns	-0.1215	0.9036	ns
R CST	83	-0.3254	0.7458	ns	0.2484	0.8045	ns	-0.8342	0.4067	ns
L OR	83	1.0443	0.2996	ns	1.1044	0.2728	ns	0.3050	0.7612	ns
R OR	83	-0.8172	0.4163	ns	0.1995	0.8424	ns	-1.9637	0.0531	ns
Corpus Callosum										
Rostrum	83	-0.0924	0.9266	ns	0.5232	0.6023	ns	-0.9860	0.3271	ns
Genu (A)	83	-0.0339	0.9730	ns	0.4381	0.6625	ns	-0.6113	0.5428	ns
Genu (P)	83	0.4856	0.6286	ns	0.6013	0.5494	ns	-0.0025	0.9980	ns
Rostral Body	83	0.4179	0.6771	ns	0.5382	0.5920	ns	-0.0482	0.9617	ns
Mid-body (A)	83	0.4803	0.6323	ns	0.7926	0.4304	ns	-0.2377	0.8128	ns
Mid-body (P)	83	1.4107	0.1623	ns	1.4722	0.1449	ns	0.5678	0.5717	ns
Isthmus	83	1.2853	0.2024	ns	0.6038	0.5477	ns	1.3354	0.1856	ns
Splenium	83	1.0173	0.3121	ns	1.8827	0.0634	ns	-0.6168	0.5391	ns
Cerebellar Tracts										
MCP	83	0.1954	0.8456	ns	1.1784	0.2422	ns	-1.0125	0.3144	ns
L SCP	83	-0.1880	0.8514	ns	0.7507	0.4551	ns	-0.6707	0.5043	ns
R SCP	83	-0.1208	0.9041	ns	-0.0771	0.9387	ns	-0.0611	0.9514	ns

Abbreviations: AF, arcuate fasciculus; CG, cingulum; IFOF, inferior frontal occipital fasciculus; ILF, inferior longitudinal fasciculus; SLF, superior longitudinal fasciculus; UF, uncinate fasciculus; CR, corona radiata; CST, corticospinal tract; OR, optic radiation; SCP, superior cerebellar peduncle; MCP, middle cerebellar peduncle; A, anterior; P, posterior; L, left; R, right; FDR, false discovery rate; MDt, tissue mean diffusivity; RDt, tissue radial diffusivity; ADt, tissue axial diffusivity; ns, not significant; adj, adjusted.

Supplementary Table 7. Tract profiles showing significant between-group differences. The t- and p-values, and the corrected significance threshold computed from permutations (threshold) are shown. The difference is significant when the p-value is lower than 0.05, and the t-value in absolute value is greater than the significance threshold. It is a significant increase in control group versus COVID-19 when the t-value is positive, and a significant decrease when it is negative.

[The table is in a separate file]

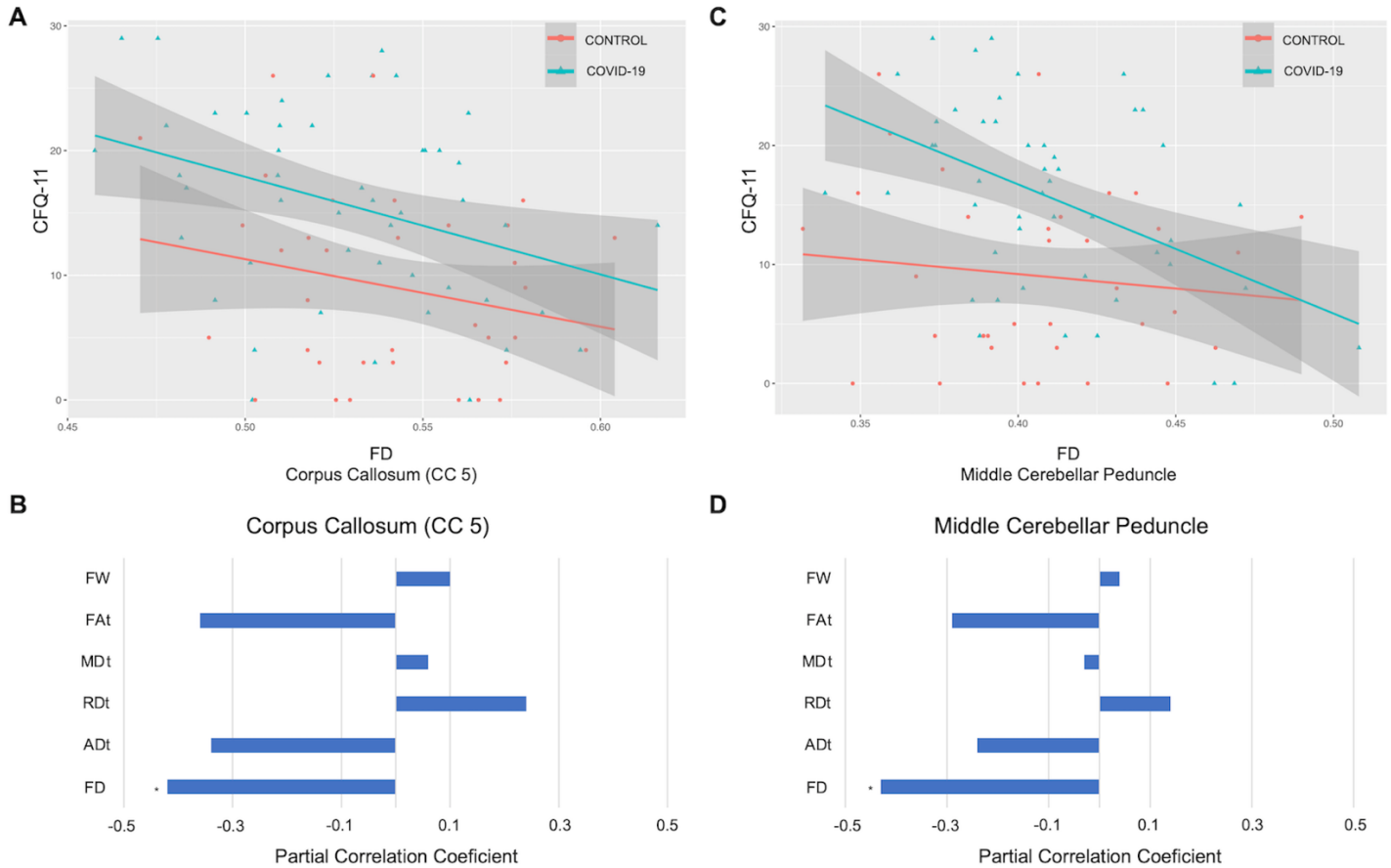
Supplementary Figure 1. Results of the between-group comparisons on tractometry analysis (association tracts): control (red line) and COVID-19 (green line) groups. Only results with a $p < 0.05$ and a t-value greater than the significance threshold are reported. The dashed red line indicates whether the FD values of the COVID-19 group were significantly lower than those of the control group.



Abbreviations: FX, fornix; IFOF, inferior frontal occipital fasciculus; ILF, inferior longitudinal fasciculus; SLF, superior longitudinal fasciculus; FD, fiber-specific apparent fiber density.

The figures illustrate the tracts in blue and the regions with significance in red.

Supplementary Figure 2. Associations between diffusion measures and total CFQ-11 score in the COV+ group. (A–C) Associations between FD and total CFQ-11 in the posterior mid-body of the corpus callosum and middle cerebellar peduncle. (B–D) Partial correlations between diffusion measures (average diffusion measure in the bundle) and total CFQ-11 score controlling for age, sex, and education were performed. The partial correlation coefficient for each diffusion measure in the bundles is reported as bar graphs (* $p < 0.05$), with adjustment for multiple comparisons (FDR).



Abbreviations: CFQ-11, Chalder Fatigue Scale; ADt, tissue axial diffusivity; FD, fiber-specific apparent fiber density; FAt, tissue fractional anisotropy; MDt, tissue mean diffusivity; RDt, tissue radial diffusivity; FW, free-water index; CC 5, posterior mid-body of the corpus callosum; FDR = false discovery rate.

Legend: * $p < 0.05$