

Supplementary Information

Feature	Description	Category
Stroke Team	Pseudonymised SSNAP team unique identifier	Categorical
Pathway	Episode number. Refers to the patient's pathway (i.e. team transfers)	Ordinal
Age	Age on arrival aggregated to 5 year bands	Discrete
>= 80 years	Whether the patient is >= 80 years old at the moment of the stroke	Binary
Gender	Gender	Binary
Ethnicity	Patient Ethnicity. Aggregated to White, Black, Mixed, Asian and Other	Categorical
Onset in hospital	Whether the patient was already an inpatient at the time of stroke	Binary
Onset to arrival (minutes)	Time from symptom onset to arrival at hospital in minutes, where known and if out of hospital stroke	Continuous
Onset Date Type	Whether the date of onset given is precise, best estimate or if the stroke occurred while sleep	Categorical
Onset Time Type	Whether the time of symptom onset given is precise, best estimate, not known	Categorical
Arrive by Ambulance	Whether the patient arrived by ambulance	Binary
Admission Hour	Hour of arrival, aggregated to 3 hour epochs	Categorical
Admission Day	Day of week at the moment of admission	Categorical
Admission Quarter	Year quarter (Q1: Jan-Mar; Q2: April-Jun; Q3: Jul-Sept; Q4: Oct-Dec)	Categorical
Admission Year	Year of admission	Categorical
Congestive Heart Failure	Comorbidities: Pre-Stroke Congestive Heart Failure	Binary
Hypertension	Comorbidities: Pre-Stroke Systemic Hypertension	Binary
Atrial Fibrillation	Comorbidities: Pre-Stroke Atrial Fibrillation (persistent, permanent, or paroxysmal)	Binary
Diabetes	Comorbidities: Pre-Stroke Diabetes Mellitus	Binary
Stroke TIA	Comorbidities: Pre-Stroke history of stroke or Transient Ischaemic Attack (TIA)	Binary
AF Antiplatelet	Only available if "Yes" to Atrial Fibrillation (Q2.1.3). Whether the patient was on antiplatelet medication prior to admission	Binary

Feature	Description	Category
AF Anticoagulent	Prior to 01-Dec-2017: Only available if "Yes" to Atrial Fibrillation (Q2.1.3); From 01-Dec-2017: available even if patient is not in Atrial Fibrillation prior to admission. Whether the patient was on anticoagulant medication prior to admission	Binary
AF Anticoagulent Vitamin K	If the patient was receiving anticoagulant medication, was it vitamin K antagonists	Binary
AF Anticoagulent DOAC	If the patient was receiving anticoagulant medication, was it direct oral anticoagulants (DOACs)	Binary
AF Anticoagulent Heparin	If the patient was receiving anticoagulant medication, was it Heparin	Binary
New AF Diagnosis	Whether a new diagnosis of Atrial Fibrillation was made on admission	Binary
Rankin Before Stroke	Patient's modified Rankin Scale score before this stroke (Higher values indicate more disability)	Ordinal
Loc	National Institutes of Health Stroke Scale Item 1a Level of Consciousness (higher values indicate more severe deficit)	Ordinal
Loc Questions	National Institutes of Health Stroke Scale Item 1b Level of Consciousness Questions (higher values indicate more severe deficit)	Ordinal
Loc Commands	National Institutes of Health Stroke Scale Item 1c Level of Consciousness Commands (higher values indicate more severe deficit)	Ordinal
Best Gaze	National Institutes of Health Stroke Scale Item 2 Best Gaze (higher values indicate more severe deficit)	Ordinal
Visual	National Institutes of Health Stroke Scale Item 3 Visual Fields (higher values indicate more severe deficit)	Ordinal
Facial Palsy	National Institutes of Health Stroke Scale Item 4 Facial Paresis (higher values indicate more severe deficit)	Ordinal
Motor Arm left	National Institutes of Health Stroke Scale Item 5a Motor Arm - Left (higher values indicate more severe deficit)	Ordinal
Motor Arm right	National Institutes of Health Stroke Scale Item 5b Motor Arm - Right (higher values indicate more severe deficit)	Ordinal

Feature	Description	Category
Motor Leg left	National Institutes of Health Stroke Scale Item 6a Motor Leg - Left (higher values indicate more severe deficit)	Ordinal
Motor Leg right	National Institutes of Health Stroke Scale Item 6b Motor Leg - Right (higher values indicate more severe deficit)	Ordinal
Limb Ataxia	National Institutes of Health Stroke Scale Item 7 Limb Ataxia (higher values indicate more severe deficit)	Ordinal
Sensory	National Institutes of Health Stroke Scale Item 8 Sensory (higher values indicate more severe deficit)	Ordinal
Best Language	National Institutes of Health Stroke Scale Item 9 Best Language (higher values indicate more severe deficit)	Ordinal
Dysarthria	National Institutes of Health Stroke Scale Item 10 Dysarthria (higher values indicate more severe deficit)	Ordinal
Extinction Inattention	National Institutes of Health Stroke Scale Item 11 Extinction and Inattention (higher values indicate more severe deficit)	Ordinal
NIHSS Arrival	National Institutes of Health Stroke Scale score on arrival at hospital	Discrete
Brain Imaging Time (minutes)	Time from Clock Start to brain scan. In minutes. "Clock Start" is used throughout SSNAP reporting to refer to the date and time of arrival at first hospital for newly arrived patients, or to the date and time of symptom onset if patient already in hospital at the time of their stroke.	Continuous
Stroke Type	Whether the stroke type was infarction or primary intracerebral haemorrhage	Binary
TIA in last month	Whether the patient had a Transient Ischaemic Attack during the last month. Item from the SSNAP comprehensive dataset questions (not mandatory)	Binary

Table S1: Features in SSNAP used for training the combined model

Feature	% Missing	Imputation method
AF Antiplatelet	79.3	missing
AF Anticoagulent	50.6	missing
AF Anticoagulent Vitamin K	62.5	missing
AF Anticoagulent DOAC	62.5	missing
AF Anticoagulent Heparin	62.5	missing
New AF Diagnosis	72.0	missing
Loc Questions	2.2	0
Loc Commands	2.1	0
Best Gaze	2.7	0
Visual	3.6	0
Facial Palsy	2.1	0
Motor Arm left	2.1	0
Motor Arm right	2.1	0
Motor Leg left	2.2	0
Motor Leg right	2.2	0
Limb Ataxia	4.0	0
Sensory	3.5	0
Best Language	2.3	0
Dysarthria	2.8	0
Extinction Inattention	2.8	0
NIHSS Arrival	5.8	0
Brain Imaging Time (minutes)	0.2	9999
Stroke Type	0.2	missing
TIA in last month	91.0	missing

Table S2: Amounts of missing data in SSNAP and imputation method used.

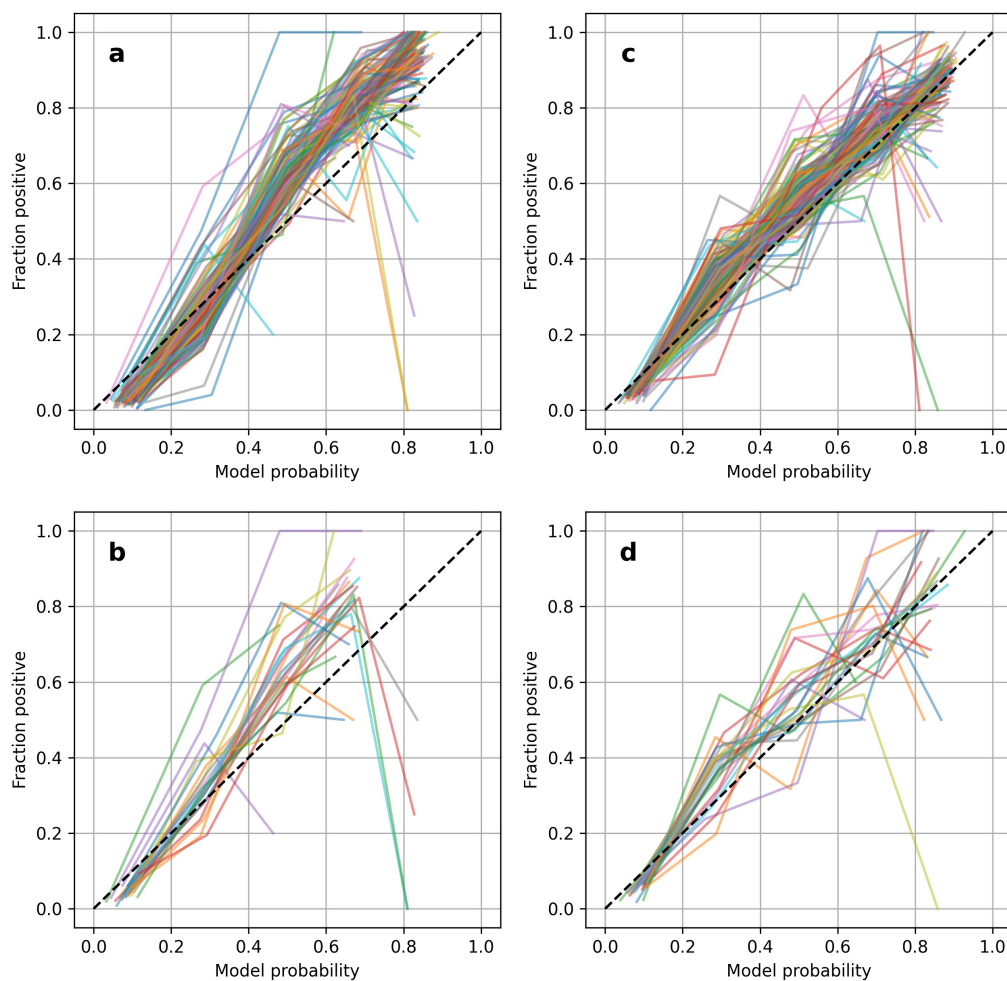


Figure S1: **a** Calibration curves for all hospital models **b** Calibration curves for hospital models that were not well calibrated **c** Calibration curves for all hospital models after applying Platt Scaling **d** Calibration curves for hospitals models that were originally not well calibrated after applying Platt Scaling

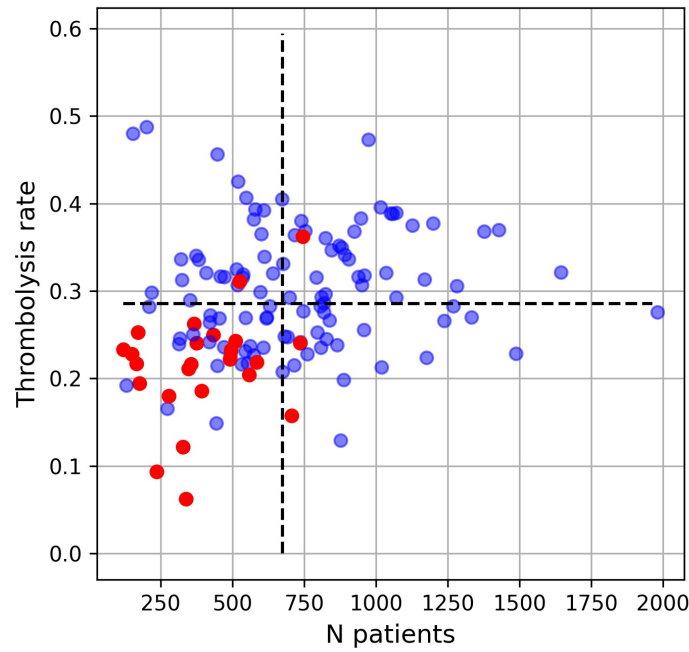


Figure S2: Number of patients (x-axis) vs thrombolysis rate (y-axis) for hospitals that were well calibrated (blue) and those that were not well calibrated (red). Black dashed lines represent mean values along each axis.

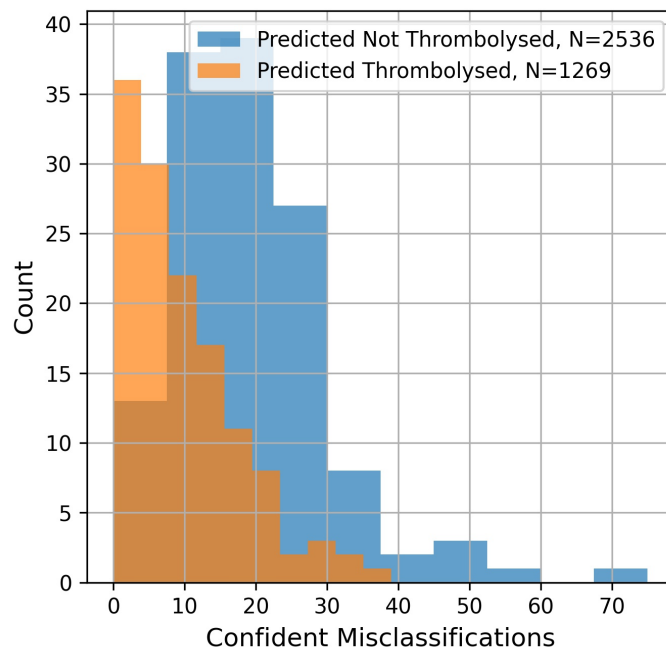


Figure S3: Histogram of confident misclassifications for hospital models, stratified by model outcome. A confident misclassification is defined as a misclassification with model probability < 0.2 or > 0.8 .

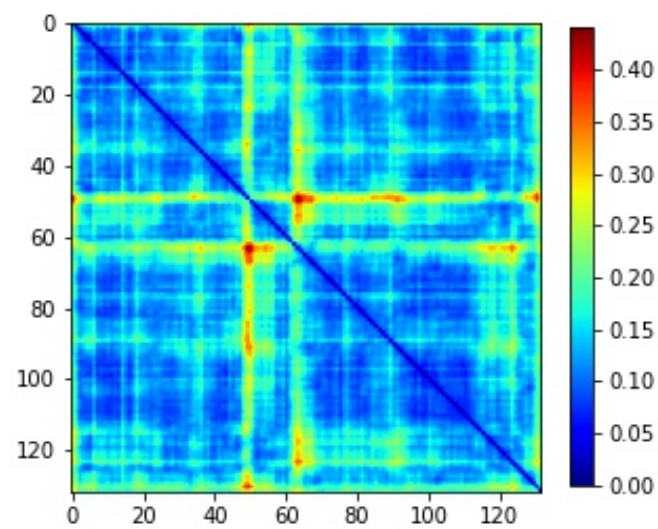


Figure S4: Pairwise Hamming distance between the decisions on treatment of a standard cohort of 10,000 patients made at each hospital.