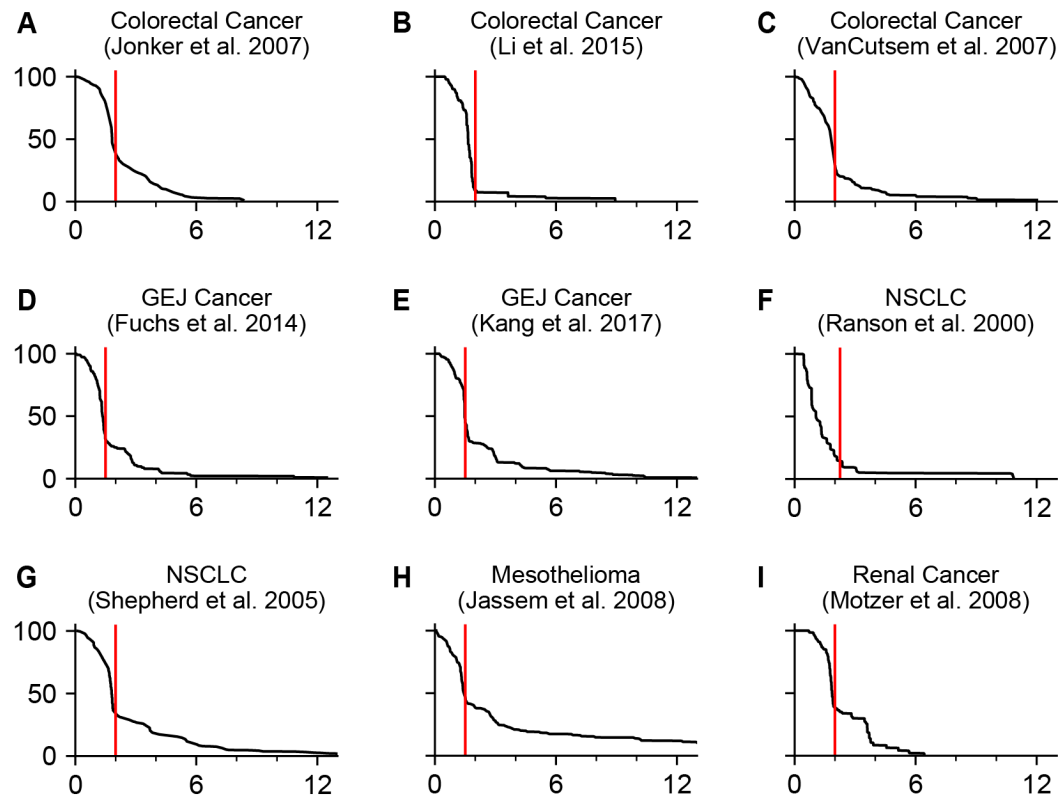
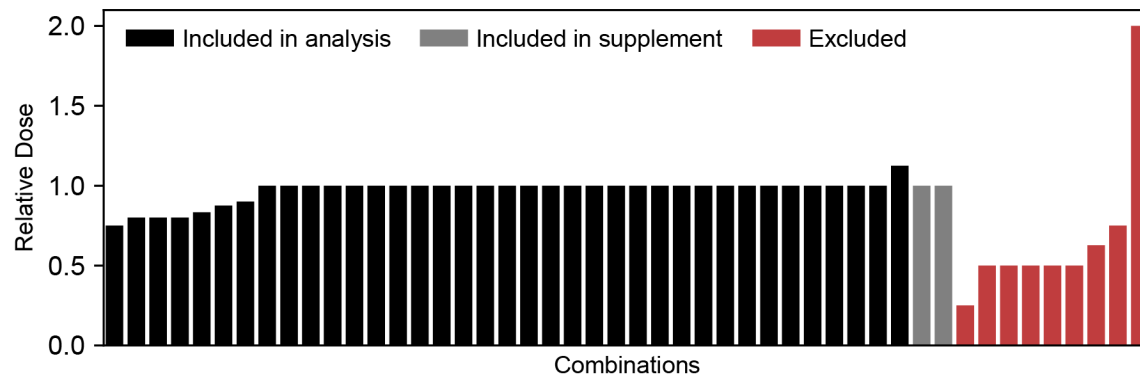


## SUPPLEMENTARY MATERIALS

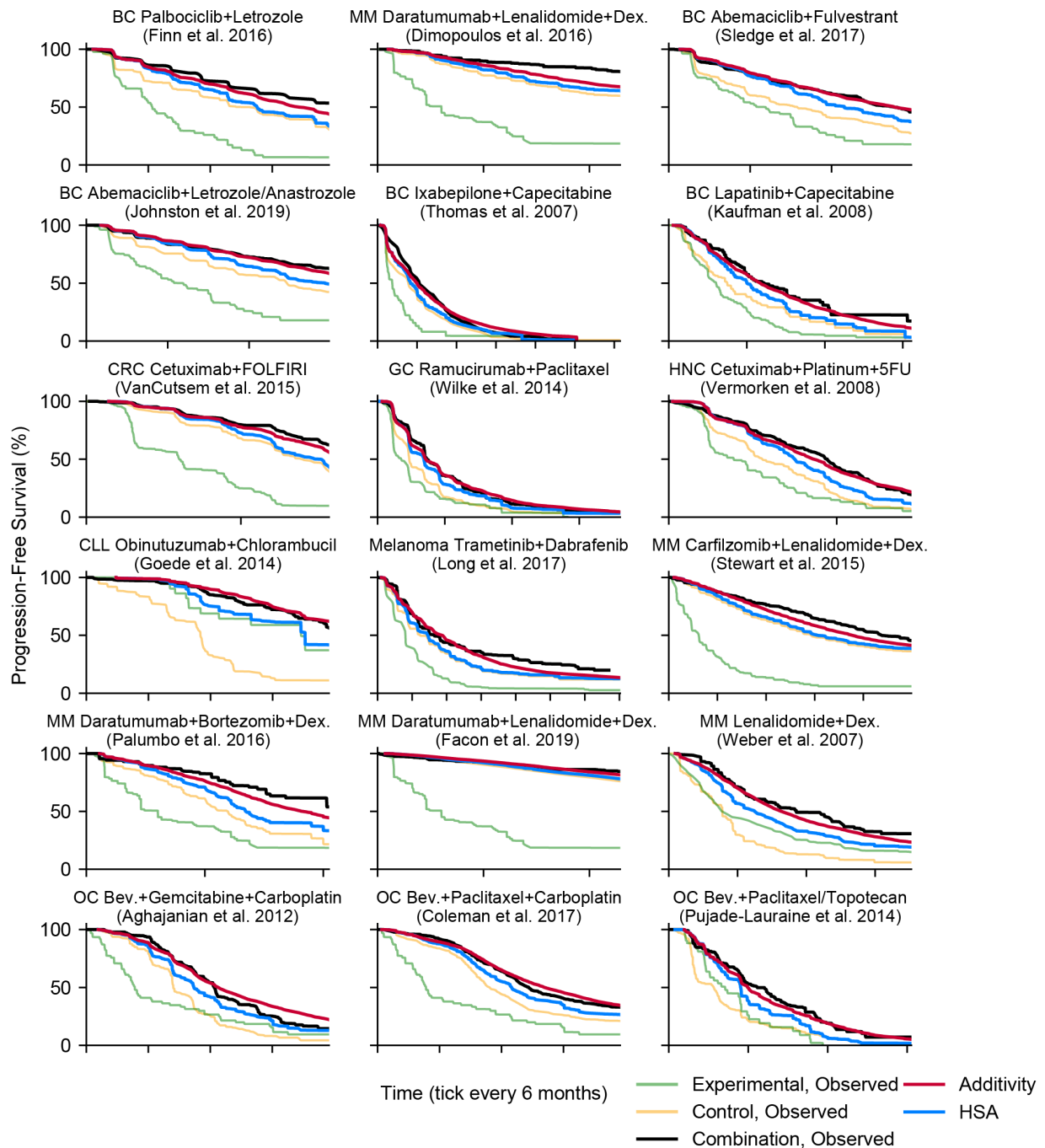
### Supplementary Figures



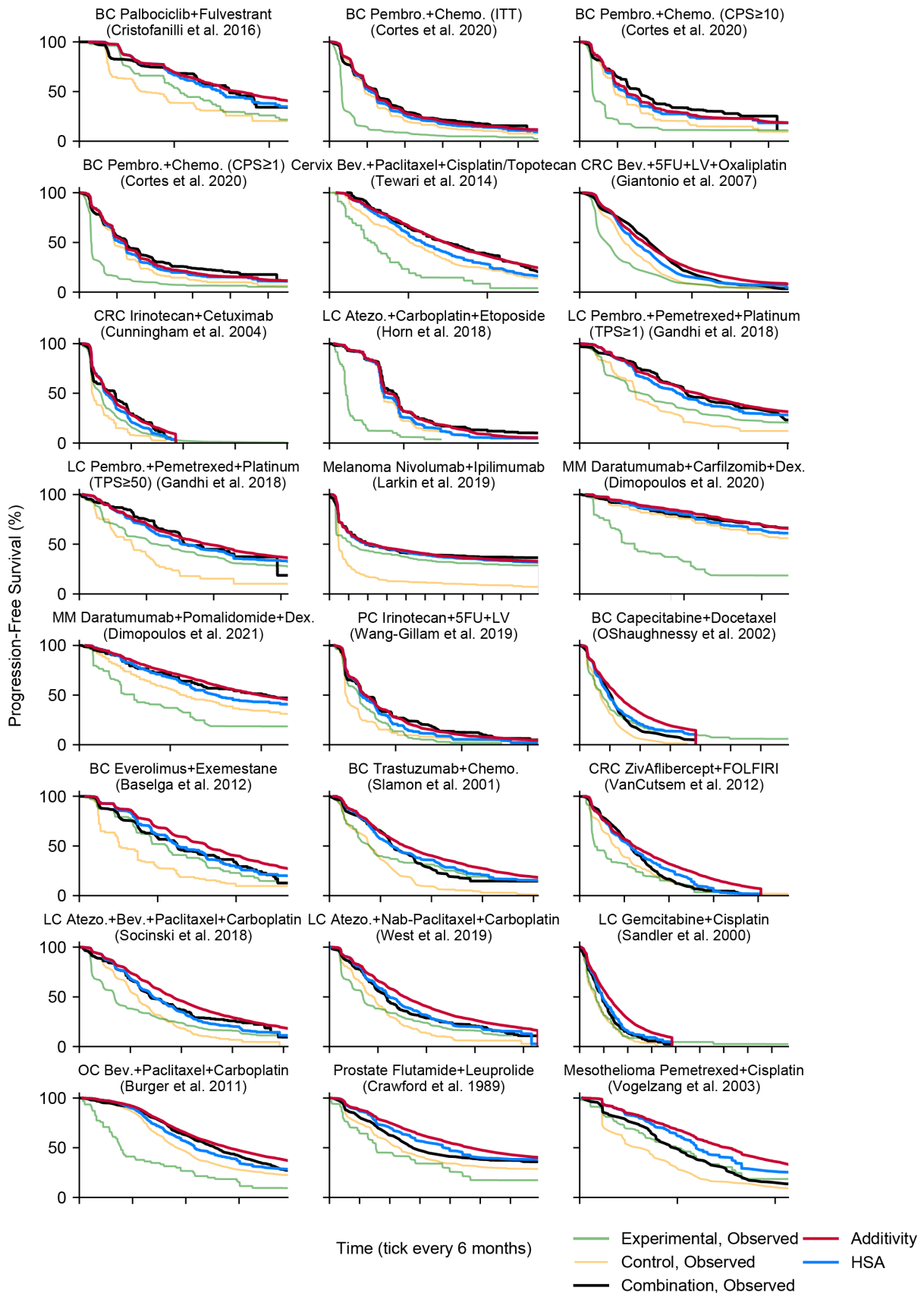
**Supplementary Figure S1. Placebo or best supportive care (BSC) survival distributions show that most disease progressions are observed at first scheduled scan.** Red vertical lines indicate the time of first tumor evaluation by radiological scans. BSC for (A) advanced colorectal cancer<sup>1</sup>; (B) BSC plus placebo for metastatic colorectal cancer<sup>2</sup>; (C) BSC for metastatic colorectal cancer<sup>3</sup>; (D) BSC plus placebo for advanced gastric or gastro-esophageal junction (GEJ) cancer<sup>4</sup>; (E) placebo for advanced GEJ cancer<sup>5</sup>; (F) BSC for advanced non-small-cell lung cancer (NSCLC)<sup>6</sup>; (G) Placebo for stage IIIB or IV NSCLC<sup>7</sup>; (H) BSC for advanced malignant pleural mesothelioma<sup>8</sup>; (I) BSC plus placebo for metastatic renal cell carcinoma<sup>9</sup>.



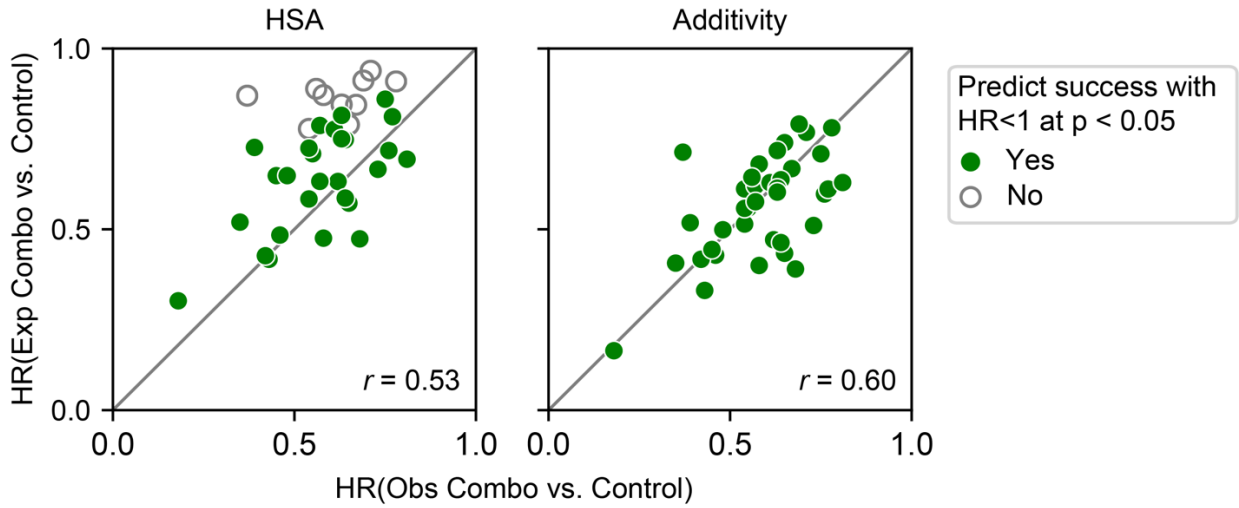
**Supplementary Figure S2. Relative doses of combination therapy compared to monotherapy.** Relative dose of the constituent drug with the largest dose difference is reported. Among combination therapies analyzed, seven combinations had dose reductions ranging from 75 to 90 percent of the monotherapy.



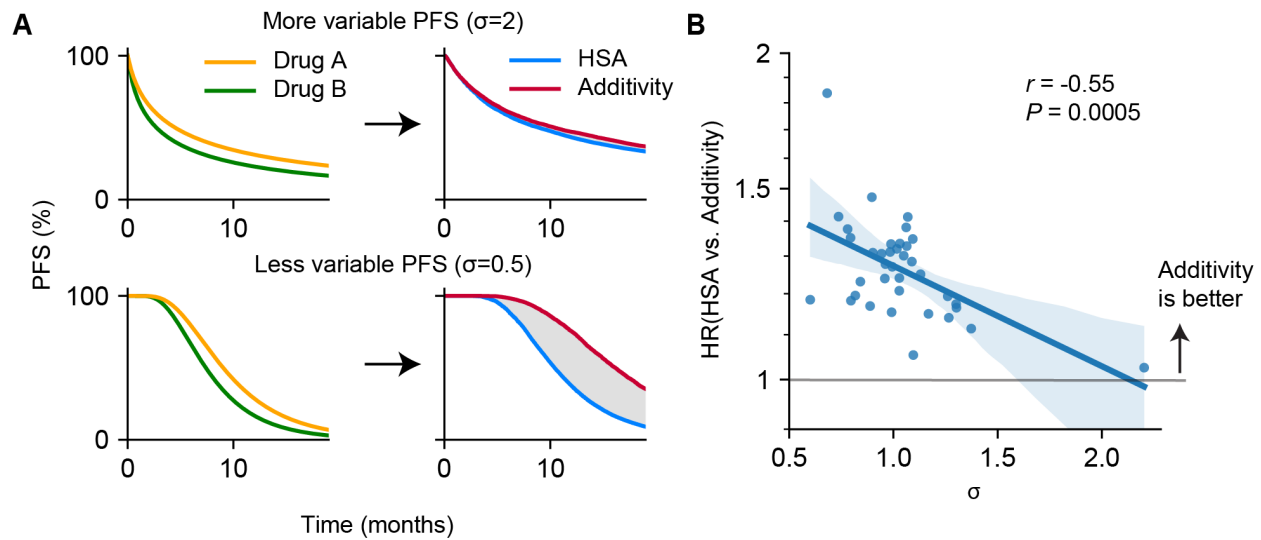
**Supplementary Figure S3. PFS of combination therapies and their constituent therapies observed in clinical trials compared with predictions of HSA and additivity.** All combination naming follows ‘experimental drug plus control drugs’ format. The clinical trial publications of the combination therapy are cited below the combination names. BC, Breast Cancer; CLL, Chronic Lymphocytic Leukemia; CRC, Colorectal Cancer; LC, Lung Cancer; MM, Multiple Myeloma; PC, Pancreatic Cancer; OC, Ovarian Cancer; Bev., Bevacizumab; Atezo., Atezolizumab; Pembro., Pembrolizumab; Chemo., Chemotherapy; 5FU, 5-Fluorouracil; LV, Leucovorin; Dex., Dexamethasone; CPS, PD-L1 combined proportion score; TPS, PD-L1 tumor proportion score.



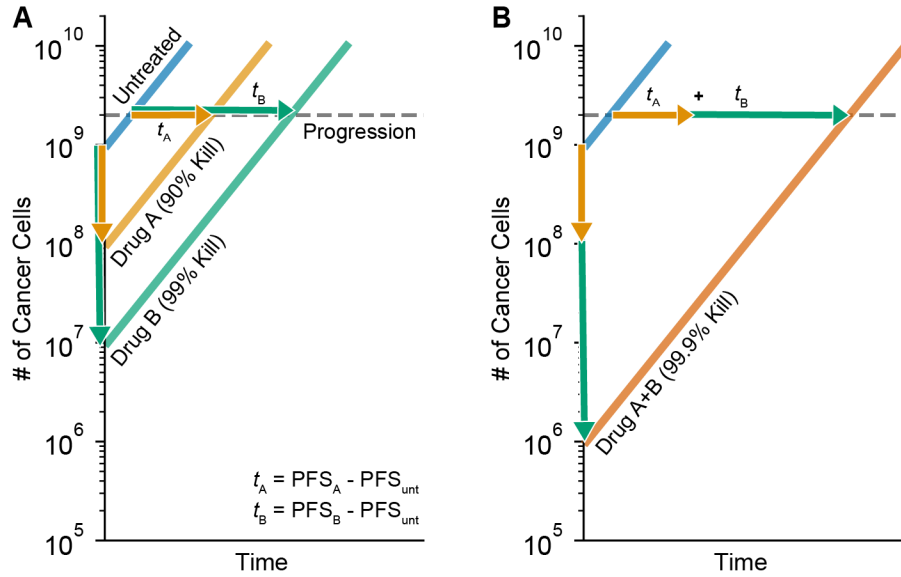
**Supplementary Figure S3. PFS of combination therapies and their constituent therapies observed in clinical trials compared with predictions of HSA and additivity (continued).**



**Supplementary Figure S4. Additivity model predicts the success of combination therapy clinical trials.** Hazard ratio comparing observed combination arm against the control arm is compared with hazard ratio comparing expected combination effect from HSA (left) and additivity (right) against the control arm. Pearson's correlation coefficients are reported (n=37).



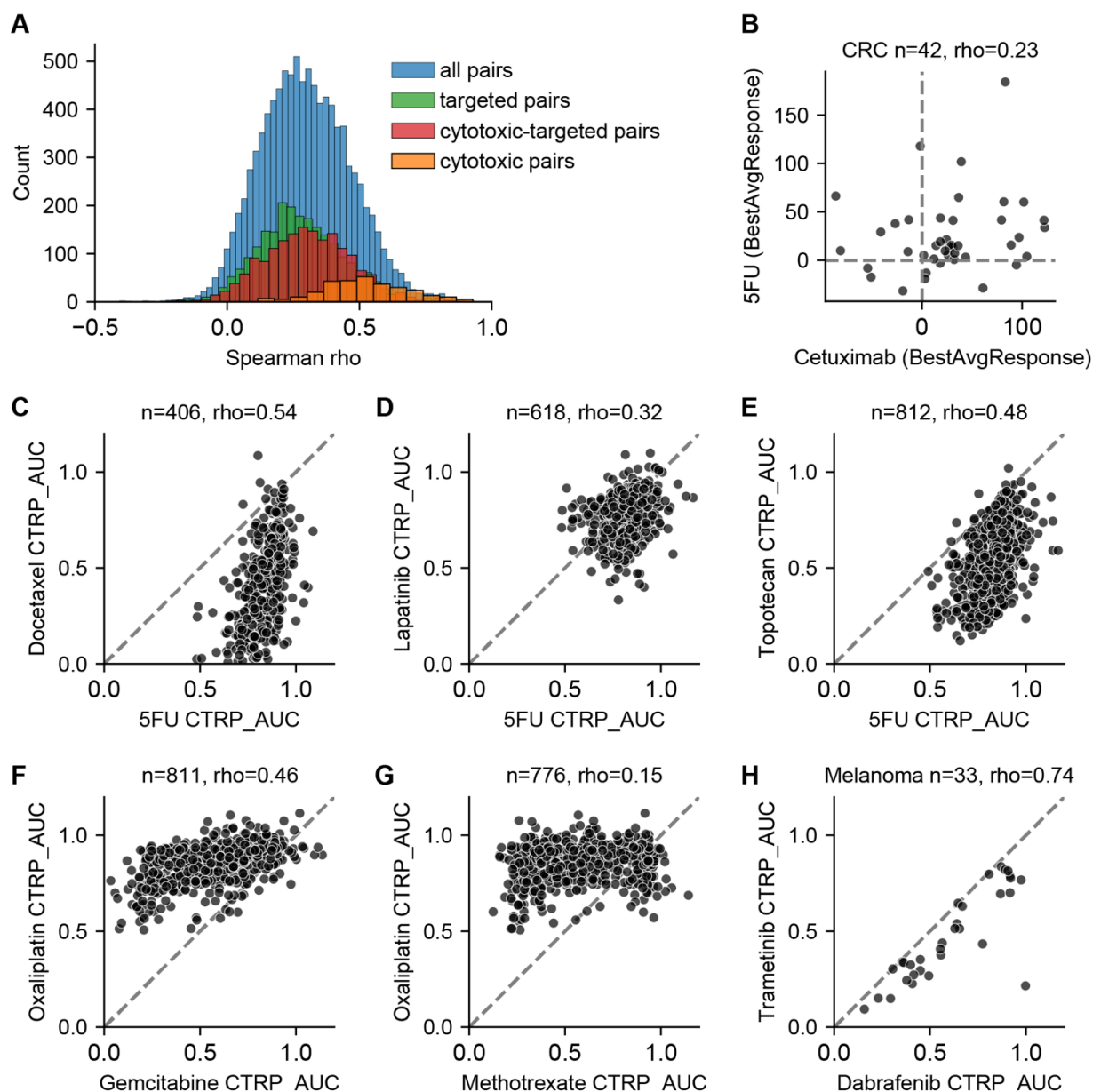
**Supplementary Figure S5. HSA and additivity models make similar predictions when monotherapy drug responses are highly variable.** (A) Monotherapy responses are either highly variable (top) or less variable (bottom). Expected combination effects of HSA and additivity differ accordingly. The area between drug A and drug B survival curves are equivalent. Survival distributions of drug A and B were simulated by lognormal survival functions: top, drug A ( $\mu=1$ ,  $\sigma=2$ ) and drug B ( $\mu=1.5$ ,  $\sigma=2$ ; bottom, drug A ( $\mu=2$ ,  $\sigma=0.5$ ) and drug B ( $\mu=2.2$ ,  $\sigma=0.5$ ). (B) The average standard deviation ( $\sigma$ ) of the monotherapy trials correlates with the hazard ratio comparing HSA and additivity. HR=1 indicates additivity is same as HSA. Each datapoint indicates one drug combination. Pearson's correlation coefficient is reported ( $n=37$ ).



**Supplementary Figure S6. Addition of PFS times is consistent with the Bliss Independence**

**model.** In cell-based experiments, drug interactions are often quantified by Bliss Independence model, which is  $P(a+b) = P(a)P(b)$ , where  $P(x)$  is the fraction of cells surviving toxin  $x$ . This corresponds to the addition of cytotoxic events on logarithmic scale. (A) When drug A kills 90% of cancer cells and drug B kills 99% of cancer cells, it will take  $\text{PFS}_A$  and  $\text{PFS}_B$  respectively to observe disease progression, assuming exponential growth of the surviving cancer cell population. If it takes  $\text{PFS}_{\text{unt}}$  for an untreated tumor to progress, drug A and drug B extend PFS by  $t_A = \text{PFS}_A - \text{PFS}_{\text{unt}}$  and  $t_B = \text{PFS}_B - \text{PFS}_{\text{unt}}$  respectively. (B) When drug A and B are additive, A+B will produce 99.9% kill by Bliss Independence. PFS will be extended by  $t_A + t_B$  beyond that of an untreated patient.





**Supplementary Figure S7. Correlations between drug responses from preclinical models were used to compute expected PFS distributions.** (A) Distributions of pairwise Spearman correlations between anti-cancer agents from CTRPv2. (Mean of all drug pairs, 0.30; targeted therapies, 0.28; cytotoxic chemotherapy – targeted therapy pairs, 0.31; cytotoxic chemotherapies, 0.52) (B) Correlation between colorectal cancer PDXs' best average response from 5-fluorouracil (5FU) and cetuximab. Spearman correlations were measured in pan-cancer cell lines for (C) docetaxel and 5FU (substitution for capecitabine), (D) lapatinib and 5FU (substitution for capecitabine), (E) topotecan (substitution for irinotecan) and 5FU, (F) oxaliplatin (substitution for cisplatin) and gemcitabine, and (G) oxaliplatin (substitution for cisplatin) and methotrexate (substitution for pemetrexed). (H) Correlation between trametinib and dabrafenib in melanoma cell lines.

## Supplementary Tables

**Supplementary Table 1.** Clinical trial data sources<sup>4,10,11,14–38</sup>.

**Supplementary Table 2.** Excluded combination therapies.

## Supplementary References

1. Jonker, D. J. *et al.* Cetuximab for the Treatment of Colorectal Cancer. *N. Engl. J. Med.* **357**, 2040–2048 (2007).
2. Li, J. *et al.* Regorafenib plus best supportive care versus placebo plus best supportive care in Asian patients with previously treated metastatic colorectal cancer (CONCUR): a randomised, double-blind, placebo-controlled, phase 3 trial. *Lancet Oncol.* **16**, 619–629 (2015).
3. Van Cutsem, E. *et al.* Open-Label Phase III Trial of Panitumumab Plus Best Supportive Care Compared With Best Supportive Care Alone in Patients With Chemotherapy-Refractory Metastatic Colorectal Cancer. *J. Clin. Oncol.* **25**, 1658–1664 (2007).
4. Fuchs, C. S. *et al.* Ramucirumab monotherapy for previously treated advanced gastric or gastro-oesophageal junction adenocarcinoma (REGARD): an international, randomised, multicentre, placebo-controlled, phase 3 trial. *The Lancet* **383**, 31–39 (2014).
5. Kang, Y.-K. *et al.* Nivolumab in patients with advanced gastric or gastro-oesophageal junction cancer refractory to, or intolerant of, at least two previous chemotherapy regimens (ONO-4538-12, ATTRACTION-2): a randomised, double-blind, placebo-controlled, phase 3 trial. *The Lancet* **390**, 2461–2471 (2017).
6. Ranson, M. Randomized Trial of Paclitaxel Plus Supportive Care Versus Supportive Care for Patients With Advanced Non-Small-Cell Lung Cancer. *J. Natl. Cancer Inst.* **92**, 1074–1080 (2000).
7. Shepherd, F. A., Hirsh, V., Smylie, M., Findlay, B. & Santabárbara, P. Erlotinib in Previously Treated Non-Small-Cell Lung Cancer. *N. Engl. J. Med.* **10** (2005).
8. Jassem, J. *et al.* Phase III Trial of Pemetrexed Plus Best Supportive Care Compared With Best Supportive Care in Previously Treated Patients With Advanced Malignant Pleural Mesothelioma. *J. Clin. Oncol.* **26**, 1698–1704 (2008).
9. Motzer, R. J. *et al.* Efficacy of everolimus in advanced renal cell carcinoma: a double-blind, randomised, placebo-controlled phase III trial. *372*, 8 (2008).
10. Hamilton, E. *et al.* nextMONARCH: Abemaciclib Monotherapy or Combined With Tamoxifen for Metastatic Breast Cancer. *Clin. Breast Cancer* **21**, 181-190.e2 (2021).
11. Malorni, L. *et al.* Palbociclib as single agent or in combination with the endocrine therapy received before disease progression for estrogen receptor-positive, HER2-negative metastatic breast cancer: TREnd trial. *Ann. Oncol.* **29**, 1748–1754 (2018).
12. Johnston, S. *et al.* MONARCH 3 final PFS: a randomized study of abemaciclib as initial therapy for advanced breast cancer. *Npj Breast Cancer* **5**, 5 (2019).
13. Finn, R. S. *et al.* Palbociclib and Letrozole in Advanced Breast Cancer. *N. Engl. J. Med.* **375**, 1925–1936 (2016).
14. Karapetis, C. S. *et al.* K-ras Mutations and Benefit from Cetuximab in Advanced Colorectal Cancer. *N. Engl. J. Med.* **359**, 1757–1765 (2008).
15. Kaufman, P. A. *et al.* Phase III Open-Label Randomized Study of Eribulin Mesylate Versus Capecitabine in Patients With Locally Advanced or Metastatic Breast Cancer Previously Treated With an Anthracycline and a Taxane. *J. Clin. Oncol.* **33**, 594–601 (2015).

16. Jerusalem, G. *et al.* Everolimus Plus Exemestane vs Everolimus or Capecitabine Monotherapy for Estrogen Receptor-Positive, HER2-Negative Advanced Breast Cancer: The BOLERO-6 Randomized Clinical Trial. *JAMA Oncol.* **4**, 1367 (2018).
17. Thomas, E. *et al.* Phase II Clinical Trial of Ixabepilone (BMS-247550), an Epothilone B Analog, in Patients With Taxane-Resistant Metastatic Breast Cancer. *J. Clin. Oncol.* **25**, 3399–3406 (2007).
18. Kaufman, B. *et al.* Lapatinib monotherapy in patients with HER2-overexpressing relapsed or refractory inflammatory breast cancer: final results and survival of the expanded HER2+ cohort in EGF103009, a phase II study. *Lancet Oncol.* **10**, 581–588 (2009).
19. Winer, E. P. *et al.* Pembrolizumab versus investigator-choice chemotherapy for metastatic triple-negative breast cancer (KEYNOTE-119): a randomised, open-label, phase 3 trial. *Lancet Oncol.* **22**, 499–511 (2021).
20. Vogel, C. L. *et al.* Efficacy and Safety of Trastuzumab as a Single Agent in First-Line Treatment of HER2-Overexpressing Metastatic Breast Cancer. *J. Clin. Oncol.* **20**, 719–26 (2002).
21. Monk, B. J. *et al.* Phase II Trial of Bevacizumab in the Treatment of Persistent or Recurrent Squamous Cell Carcinoma of the Cervix: A Gynecologic Oncology Group Study. *J. Clin. Oncol.* **27**, 1069–1074 (2009).
22. Sobrero, A. F., Pastorino, A., Sargent, D. J. & Bruzzi, P. Raising the Bar for Antineoplastic Agents: How to Choose Threshold Values for Superiority Trials in Advanced Solid Tumors. *Clin. Cancer Res.* **21**, 1036–1043 (2015).
23. Tang, P. A. *et al.* Phase II Clinical and Pharmacokinetic Study of Aflibercept in Patients with Previously Treated Metastatic Colorectal Cancer. *Clin. Cancer Res.* **18**, 6023–6031 (2012).
24. Vermorken, J. B. *et al.* Open-Label, Uncontrolled, Multicenter Phase II Study to Evaluate the Efficacy and Toxicity of Cetuximab As a Single Agent in Patients With Recurrent and/or Metastatic Squamous Cell Carcinoma of the Head and Neck Who Failed to Respond to Platinum-Based Therapy. *J. Clin. Oncol.* **25**, 2171–2177 (2007).
25. Byrd, J. C. *et al.* Randomized phase 2 study of obinutuzumab monotherapy in symptomatic, previously untreated chronic lymphocytic leukemia. *Blood* **127**, 79–86 (2016).
26. Rittmeyer, A. *et al.* Atezolizumab versus docetaxel in patients with previously treated non-small-cell lung cancer (OAK): a phase 3, open-label, multicentre randomised controlled trial. *The Lancet* **389**, 255–265 (2017).
27. Pujol, J.-L. *et al.* A Randomized Non-Comparative Phase II Study of Anti-Programmed Cell Death-Ligand 1 Atezolizumab or Chemotherapy as Second-Line Therapy in Patients With Small Cell Lung Cancer: Results From the IFCT-1603 Trial. *J. Thorac. Oncol.* **14**, 903–913 (2019).
28. Lara, P. N. *et al.* Gemcitabine in Patients with Non-Small-Cell Lung Cancer Previously Treated with Platinum-Based Chemotherapy: A Phase II California Cancer Consortium Trial. *Clin. Lung Cancer* **6**, 102–107 (2004).
29. Robert, C. *et al.* Five-year outcomes from a phase 3 METRIC study in patients with BRAF V600 E/K-mutant advanced or metastatic melanoma. *Eur. J. Cancer* **109**, 61–69 (2019).
30. Taylor, P. *et al.* Single-Agent Pemetrexed for Chemonaïve and Pretreated Patients with Malignant Pleural Mesothelioma: Results of an International Expanded Access Program. *J. Thorac. Oncol.* **3**, 764–771 (2008).
31. Hájek, R. *et al.* A randomized phase III study of carfilzomib vs low-dose corticosteroids with optional cyclophosphamide in relapsed and refractory multiple myeloma (FOCUS). *Leukemia* **31**, 107–114 (2017).
32. Lonial, S. *et al.* Daratumumab monotherapy in patients with treatment-refractory multiple myeloma (SIRIUS): an open-label, randomised, phase 2 trial. *The Lancet* **387**, 1551–1560 (2016).
33. Richardson, P. *et al.* Safety and efficacy of single-agent lenalidomide in patients with relapsed and refractory multiple myeloma. *Blood* **114**, 772–778 (2009).

34. Burger, R. A., Sill, M. W., Monk, B. J., Greer, B. E. & Sorosky, J. I. Phase II Trial of Bevacizumab in Persistent or Recurrent Epithelial Ovarian Cancer or Primary Peritoneal Cancer: A Gynecologic Oncology Group Study. *J. Clin. Oncol.* **25**, 5165–5171 (2007).
35. Cannistra, S. A. *et al.* Phase II Study of Bevacizumab in Patients With Platinum-Resistant Ovarian Cancer or Peritoneal Serous Cancer. *J. Clin. Oncol.* **25**, 5180–5186 (2007).
36. Chang, A. *et al.* Double-blind, randomized study of primary hormonal treatment of stage D2 prostate carcinoma: flutamide versus diethylstilbestrol. *J. Clin. Oncol.* **14**, 2250–2257 (1996).
37. Mok, T. S. *et al.* Pembrolizumab versus chemotherapy for previously untreated, PD-L1-expressing, locally advanced or metastatic non-small-cell lung cancer (KEYNOTE-042): a randomised, open-label, controlled, phase 3 trial. *The Lancet* **393**, 1819–1830 (2019).
38. Gandhi, L. *et al.* Pembrolizumab plus Chemotherapy in Metastatic Non–Small-Cell Lung Cancer. *N. Engl. J. Med.* **378**, 2078–2092 (2018).