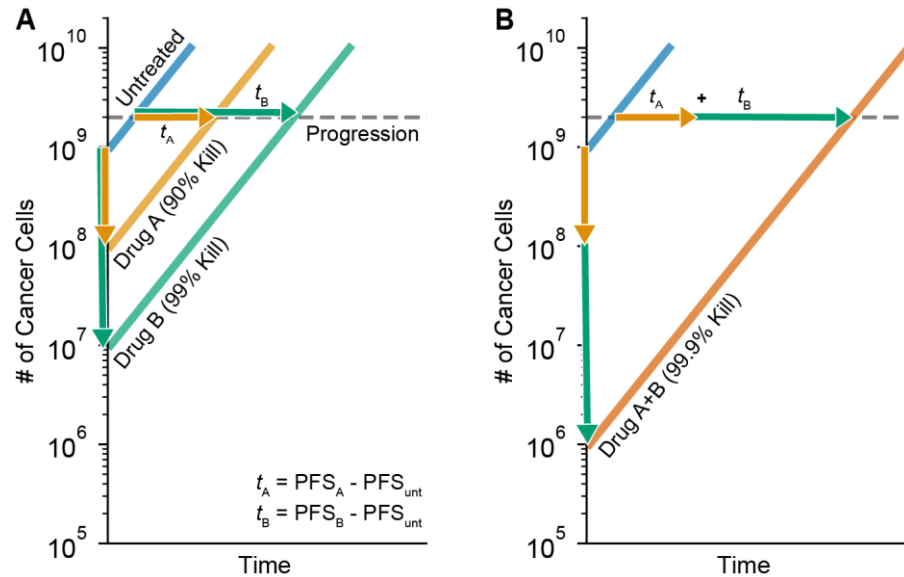


Extended Data Figures



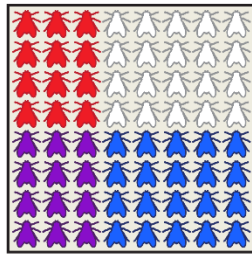
See Supplementary Notes for a mathematical derivation of the relationship illustrated here.

Extended Data Figure 1. Addition of PFS times is consistent with the Bliss Independence model. In cell-based experiments, drug interactions are often quantified by Bliss Independence model, which is $P(a+b) = P(a)P(b)$, where $P(x)$ is the fraction of cells surviving toxin x . This corresponds to the addition of cytotoxic events on logarithmic scale. (A) When drug A kills 90% of cancer cells and drug B kills 99% of cancer cells, it will take PFS_A and PFS_B respectively to observe disease progression, assuming exponential growth of the surviving cancer cell population. If it takes PFS_{unt} for an untreated tumor to progress, drug A and drug B extend PFS by $t_A = \text{PFS}_A - \text{PFS}_{\text{unt}}$ and $t_B = \text{PFS}_B - \text{PFS}_{\text{unt}}$ respectively. (B) When drug A and B are additive, A+B will produce 99.9% kill by Bliss Independence. PFS will be extended by $t_A + t_B$ beyond that of an untreated patient.

What Bliss described (1939)

Multiple toxins increase the fraction of organisms killed.

- organism killed by drug A
- organism killed by drug B
- organism killed by either drug
- organism survives

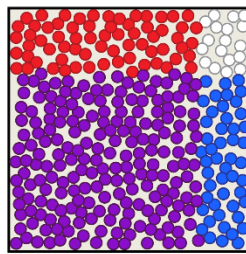


Organisms

How Bliss's model has been applied to cancer (since 1981)

Multiple drugs increase the fraction of cells killed.

- cell killed by drug A
- cell killed by drug B
- cell killed by either drug
- cell survives



Cells

Implication

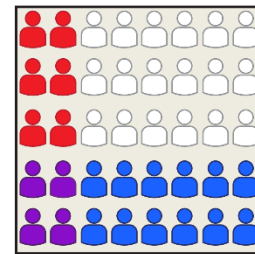
Even if each cell is only affected by one drug, the tumor (the population of all cells) has greater fractional cell kill from two drugs than one.

Thus the patient's response is *better than Highest Single Agent*.

What Frei described (1961)

Multiple drugs increase the fraction of patients whose tumor responds.

- patient responds to drug A
- patient responds to drug B
- patient responds to either drug
- patient does not respond (dies)



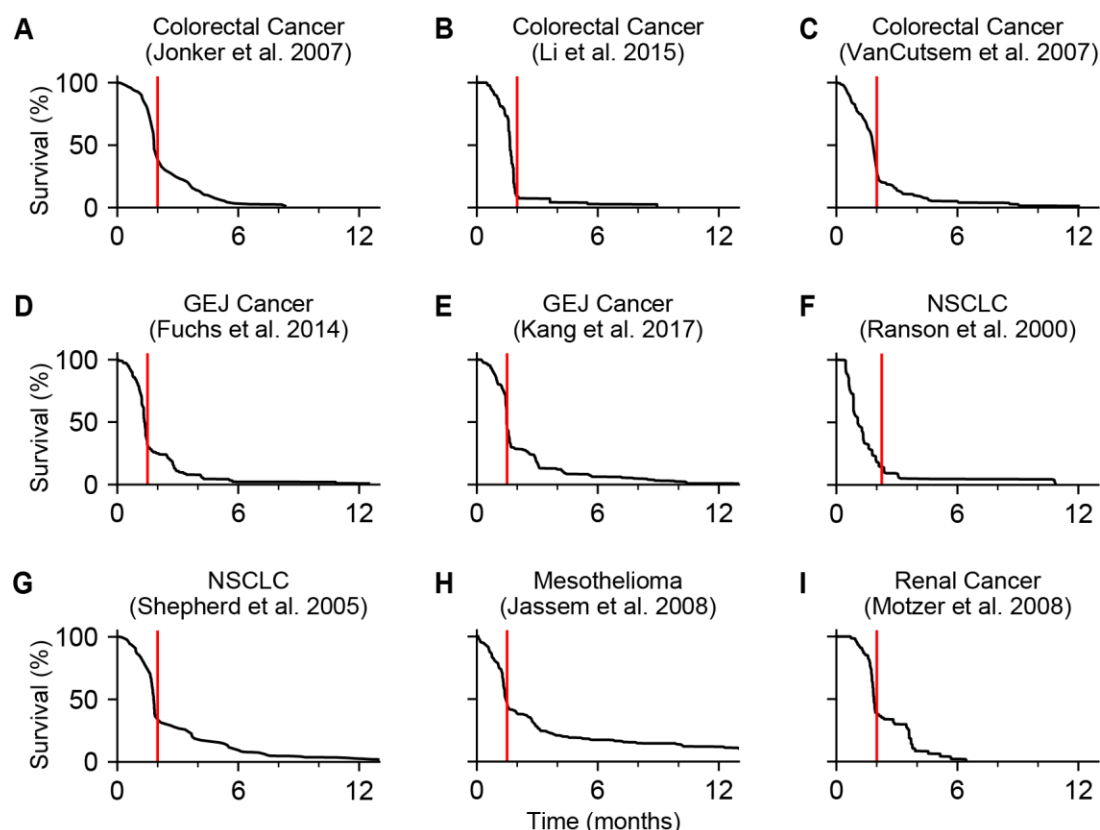
Patients

Implication

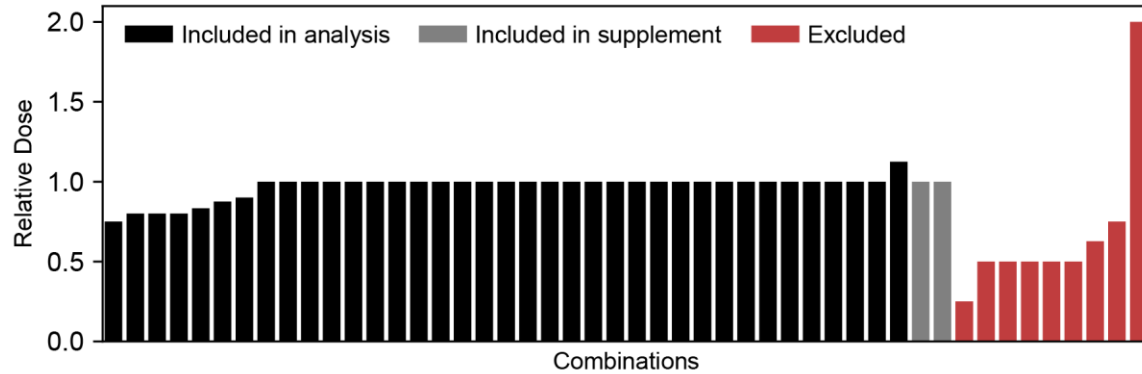
Even if each patient is only affected by one drug, the population of all patients has higher response rate from two drugs than one.

This occurs even if each patient's response is *equal to Highest Single Agent*.

Extended Data Figure 2. Frei's model of independent drug action is a model of highest single agent. Bliss' model and Frei's model are applications of the addition rule of probability at different biological scales, resulting in different biological interpretations. Bliss' model was developed to analyze fraction of organisms killed by multiple toxins. Bliss' model has been applied in cancer research to analyze fraction of tumor cells killed by multiple therapies. In the context of a population of cancer cells, Bliss' model implies that more *cancer cells* will be killed by drug A+B than either drug A or B alone. This results in a patient's response being better than Highest Single Agent. Frei applied the same fundamental principle of probability to remission rates in a population of patients treated with multiple therapies. In the context of a population of patients, Frei's model implies that more *patients* will respond to drug A+B than either drug A or B alone. However, this does not require or imply that an individual patient's response to drug A+B is better than drug A or B alone. The improved response rate described by Frei's model occurs even if each individual patient's response is equal to that of the Highest Single Agent.

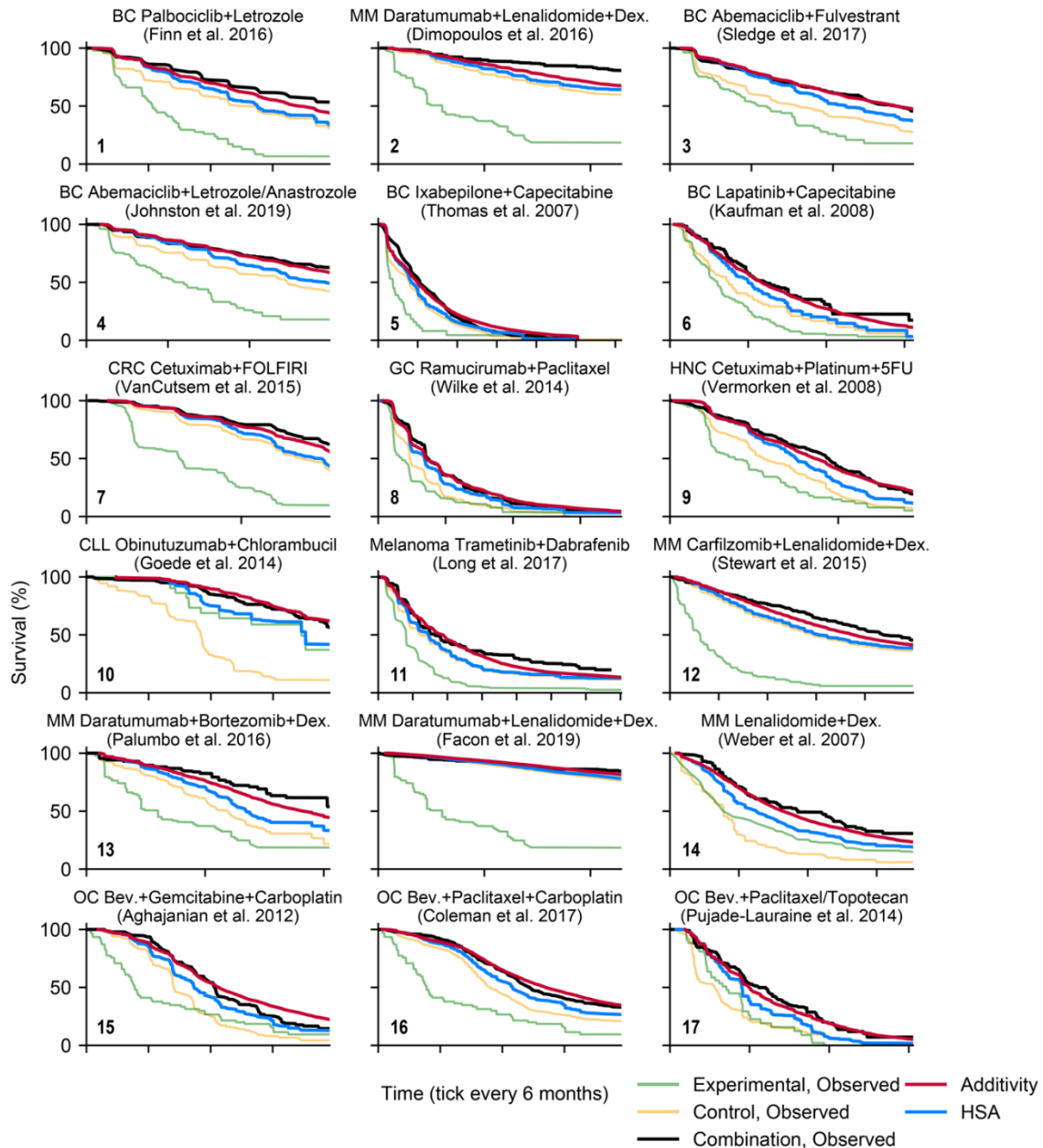


Extended Data Figure 3. Placebo or best supportive care (BSC) survival distributions show that most disease progressions are observed at first scheduled scan. Red vertical lines indicate the time of first tumor evaluation by radiological scans. BSC for (A) advanced colorectal cancer¹; (B) BSC plus placebo for metastatic colorectal cancer²; (C) BSC for metastatic colorectal cancer³; (D) BSC plus placebo for advanced gastric or gastro-esophageal junction (GEJ) cancer⁴; (E) placebo for advanced GEJ cancer⁵; (F) BSC for advanced non-small-cell lung cancer (NSCLC)⁶; (G) Placebo for stage IIIB or IV NSCLC⁷; (H) BSC for advanced malignant pleural mesothelioma⁸; (I) BSC plus placebo for metastatic renal cell carcinoma⁹.

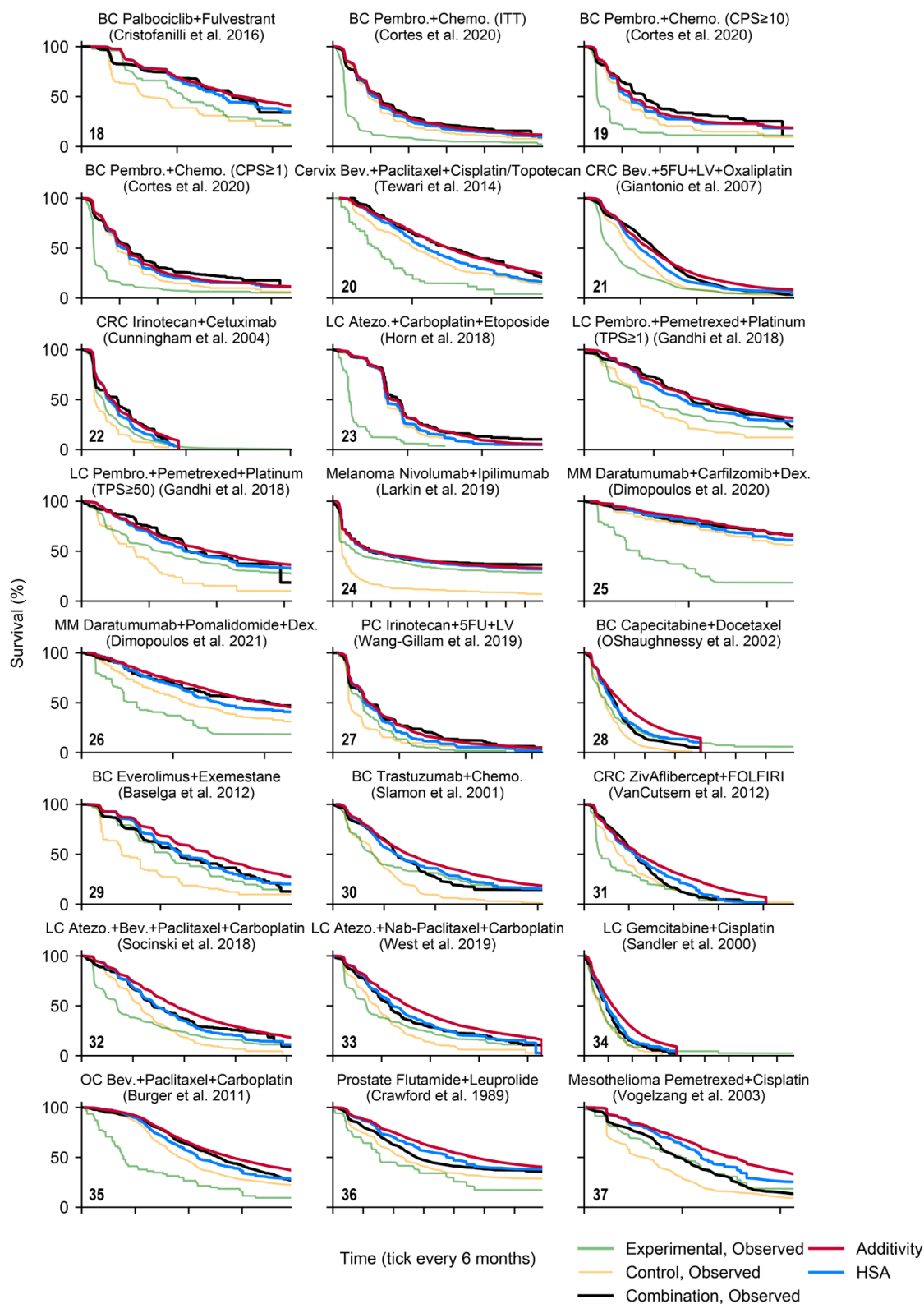


Extended Data Figure 4. Relative doses of combination therapy compared to monotherapy.

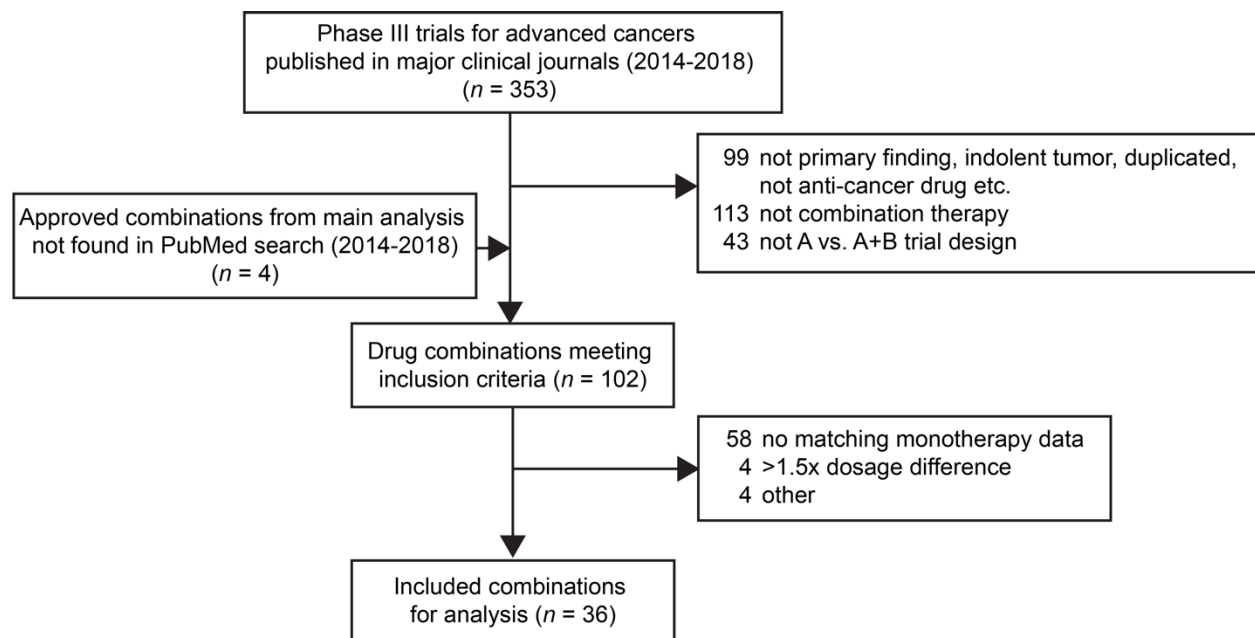
Relative dose of the constituent drug with the largest dose difference is reported. Among combination therapies analyzed, seven combinations had dose reductions ranging from 75 to 90 percent of the monotherapy. Two combinations were included in supplement due to unanticipated differences between combination and monotherapy trials (grey bars). Three additional combinations included in supplement were biomarker subgroups of existing combinations and thus are not depicted here.



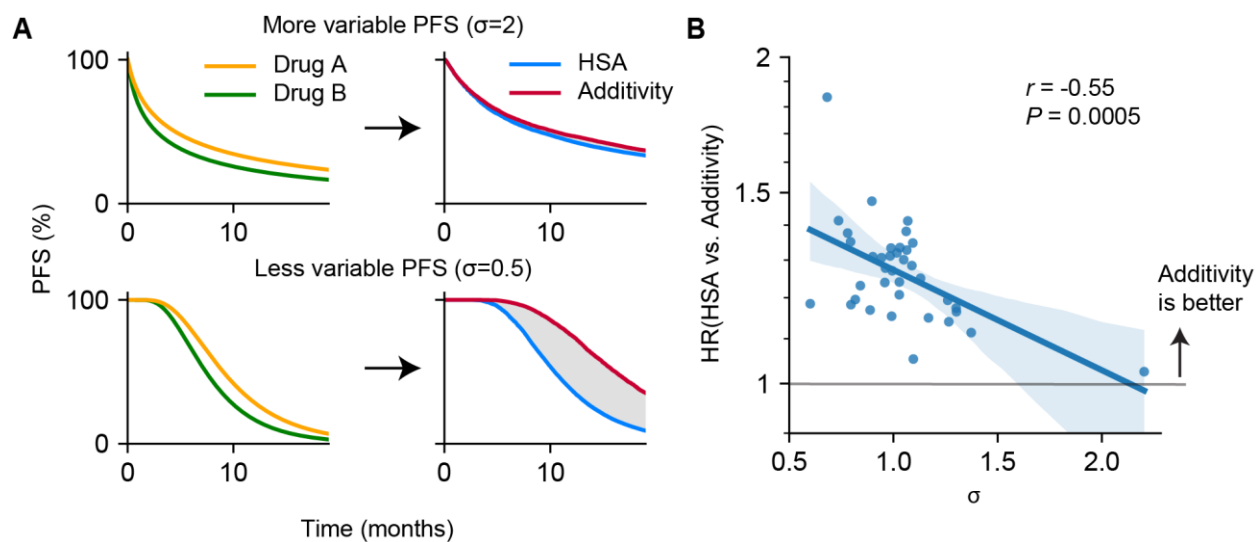
Extended Data Figure 5. PFS of combination therapies and their constituent therapies observed in clinical trials compared with predictions of HSA and additivity. Combinations from the main analysis, two additional combinations that did not strictly satisfy the inclusion criteria, and biomarker subgroups are included. All combination naming follows ‘experimental drug plus control drugs’ format. The clinical trial publications of the combination therapy are cited below the combination names. Panel numbers from Figure 2 are annotated. BC, Breast Cancer; CLL, Chronic Lymphocytic Leukemia; CRC, Colorectal Cancer; LC, Lung Cancer; MM, Multiple Myeloma; PC, Pancreatic Cancer; OC, Ovarian Cancer; Bev., Bevacizumab; Atezo., Atezolizumab; Pembro., Pembrolizumab; Chemo., Chemotherapy; 5FU, 5-Fluorouracil; LV, Leucovorin; Dex., Dexamethasone; CPS, PD-L1 combined proportion score; TPS, PD-L1 tumor proportion score.



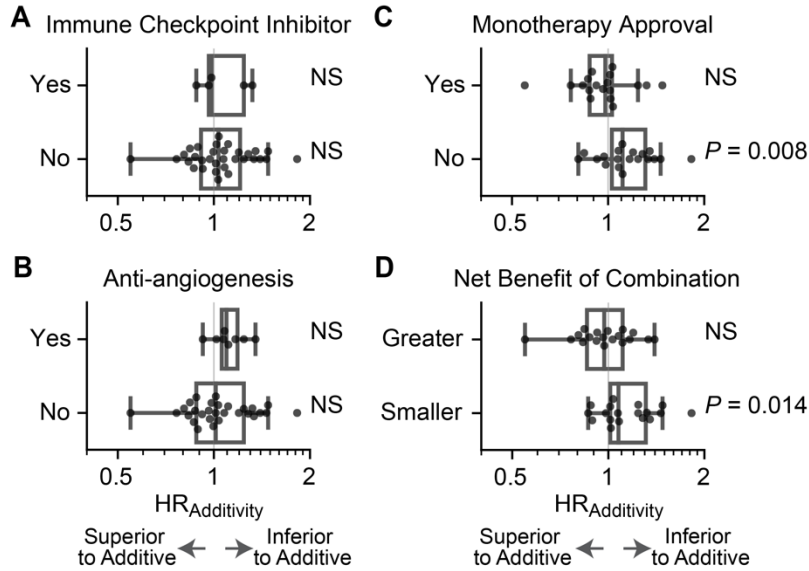
Extended Data Figure 5. PFS of combination therapies and their constituent therapies observed in clinical trials compared with predictions of HSA and additivity (continued).



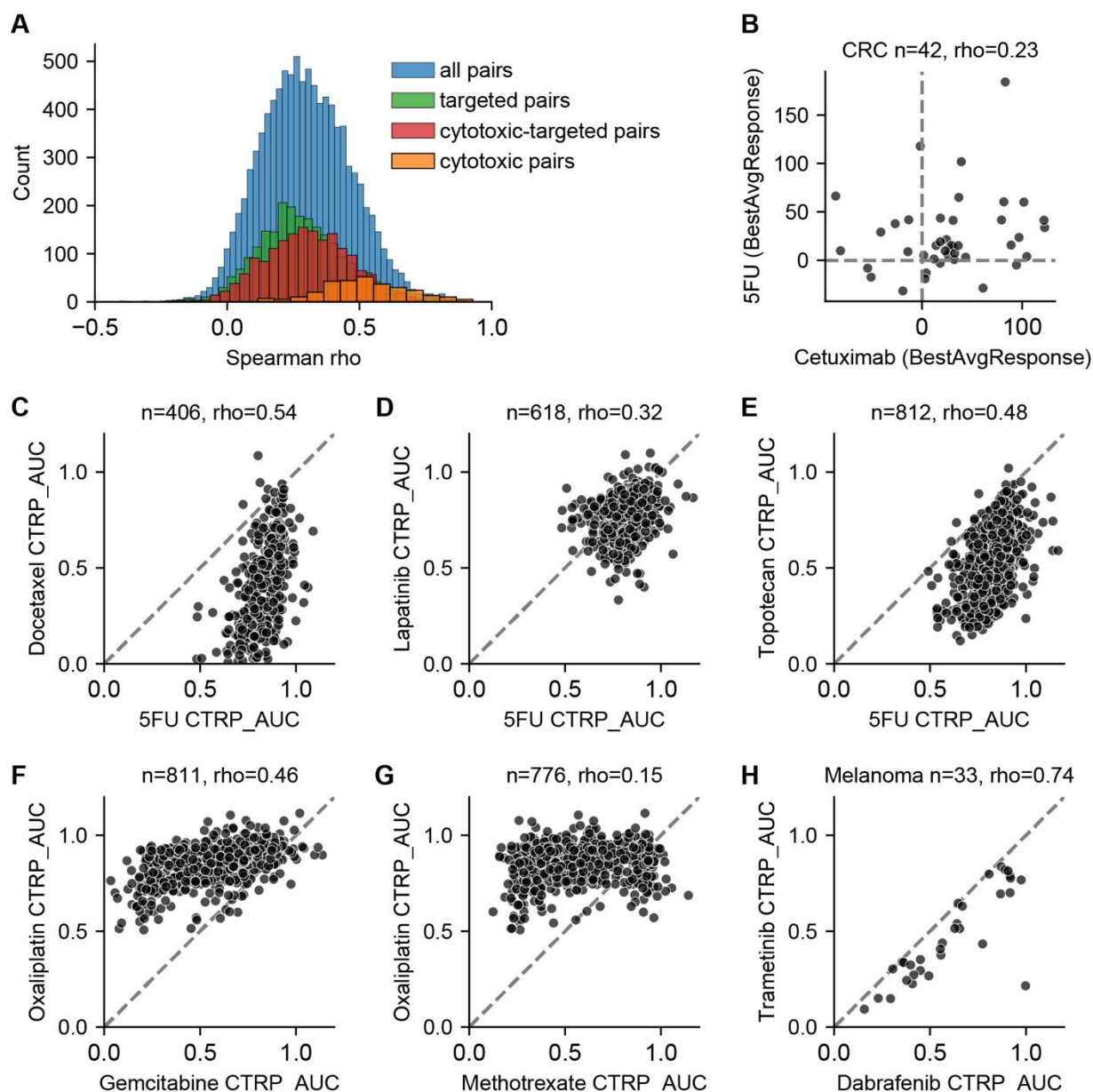
Extended Data Figure 6. Pipeline of phase III trials selection process (2014-2018). Phase III trials of combination therapies in a 5-year interval regardless of their success or failure were selected based on similar inclusion criteria as for the FDA-approved combination arms.



Extended Data Figure 7. HSA and additivity models make similar predictions when monotherapy drug responses are highly variable. (A) Monotherapy responses are either highly variable (top) or less variable (bottom). Expected combination effects of HSA and additivity differ accordingly. The area between drug A and drug B survival curves are equivalent. Survival distributions of drug A and B were simulated by lognormal survival functions: top, drug A ($\mu=1$, $\sigma=2$) and drug B ($\mu=1.5$, $\sigma=2$); bottom, drug A ($\mu=2$, $\sigma=0.5$) and drug B ($\mu=2.2$, $\sigma=0.5$). (B) The average standard deviation (σ) of the monotherapy trials correlates with the hazard ratio comparing HSA and additivity. HR=1 indicates additivity is same as HSA. Each datapoint indicates one drug combination. Pearson's correlation coefficient is reported ($n=37$).



Extended Data Figure 8. Some combinations with shared characteristics are associated with lesser efficacy than expected by additivity. 37 trials of combination therapies were divided into classes based upon (A) whether or not the combination includes an immune checkpoint inhibitor, (B) whether or not the combination includes an anti-angiogenesis agent, (C) whether or not the new drug in the combination has been approved for use as a monotherapy, and (D) whether the net benefit of the combination therapy, measured as the Hazard Ratio of PFS compared to the control arm of the clinical trials, is greater or smaller than the median Hazard Ratio of all combination therapy trials analyzed (median HR for PFS of all approved combination studied is 0.61). Combination therapies that were below or above the median HR were classified as having a greater or smaller net benefit, respectively. Each of these eight groups were tested for deviation from additivity ($HR_{\text{additivity}} \neq 1$) by the two-sided Wilcoxon signed-rank test. The center of the boxplots indicates the median, and the upper and lower bounds of the boxes indicate first and third interquartile ranges. Whiskers extends to 1.5 interquartile range. NS denotes not significant.



Extended Data Figure 9. Correlations between drug responses from preclinical models were used to compute expected PFS distributions. (A) Distributions of pairwise Spearman correlations between anti-cancer agents from CTRPv2. (Mean of all drug pairs, 0.30; targeted therapies, 0.28; cytotoxic chemotherapy – targeted therapy pairs, 0.31; cytotoxic chemotherapies, 0.52) (B) Correlation between colorectal cancer PDXs' best average response from 5-fluorouracil (5FU) and cetuximab. Spearman correlations were measured in pan-cancer cell lines for (C) docetaxel and 5FU (substitution for capecitabine), (D) lapatinib and 5FU (substitution for capecitabine), (E) topotecan (substitution for irinotecan) and 5FU, (F) oxaliplatin (substitution for cisplatin) and gemcitabine, and (G) oxaliplatin (substitution for cisplatin) and methotrexate (substitution for pemetrexed). (H) Correlation between trametinib and dabrafenib in melanoma cell lines.

Extended Data Tables

Extended Data Table 1. FDA-approved combination therapies clinical trial data sources and analysis results^{4,10–36}.

Extended Data Table 2. Excluded combination therapies.

Extended Data Table 3. Positive and negative phase III trials of combination therapies between 2014 and 2018^{22,37–61,61–69}.

Supplementary References

1. Jonker, D. J. *et al.* Cetuximab for the Treatment of Colorectal Cancer. *N. Engl. J. Med.* **357**, 2040–2048 (2007).
2. Li, J. *et al.* Regorafenib plus best supportive care versus placebo plus best supportive care in Asian patients with previously treated metastatic colorectal cancer (CONCUR): a randomised, double-blind, placebo-controlled, phase 3 trial. *Lancet Oncol.* **16**, 619–629 (2015).
3. Van Cutsem, E. *et al.* Open-Label Phase III Trial of Panitumumab Plus Best Supportive Care Compared With Best Supportive Care Alone in Patients With Chemotherapy-Refractory Metastatic Colorectal Cancer. *J. Clin. Oncol.* **25**, 1658–1664 (2007).
4. Fuchs, C. S. *et al.* Ramucirumab monotherapy for previously treated advanced gastric or gastro-oesophageal junction adenocarcinoma (REGARD): an international, randomised, multicentre, placebo-controlled, phase 3 trial. *The Lancet* **383**, 31–39 (2014).
5. Kang, Y.-K. *et al.* Nivolumab in patients with advanced gastric or gastro-oesophageal junction cancer refractory to, or intolerant of, at least two previous chemotherapy regimens (ONO-4538-12, ATTRACTION-2): a randomised, double-blind, placebo-controlled, phase 3 trial. *The Lancet* **390**, 2461–2471 (2017).
6. Ranson, M. Randomized Trial of Paclitaxel Plus Supportive Care Versus Supportive Care for Patients With Advanced Non-Small-Cell Lung Cancer. *J. Natl. Cancer Inst.* **92**, 1074–1080 (2000).
7. Shepherd, F. A., Hirsh, V., Smylie, M., Findlay, B. & Santabárbara, P. Erlotinib in Previously Treated Non-Small-Cell Lung Cancer. *N. Engl. J. Med.* **10** (2005).
8. Jassem, J. *et al.* Phase III Trial of Pemetrexed Plus Best Supportive Care Compared With Best Supportive Care in Previously Treated Patients With Advanced Malignant Pleural Mesothelioma. *J. Clin. Oncol.* **26**, 1698–1704 (2008).
9. Motzer, R. J. *et al.* Efficacy of everolimus in advanced renal cell carcinoma: a double-blind, randomised, placebo-controlled phase III trial. **372**, 8 (2008).
10. Karapetis, C. S. *et al.* K-ras Mutations and Benefit from Cetuximab in Advanced Colorectal Cancer. *N. Engl. J. Med.* **359**, 1757–1765 (2008).

11. Hamilton, E. *et al.* nextMONARCH: Abemaciclib Monotherapy or Combined With Tamoxifen for Metastatic Breast Cancer. *Clin. Breast Cancer* **21**, 181-190.e2 (2021).
12. Kaufman, P. A. *et al.* Phase III Open-Label Randomized Study of Eribulin Mesylate Versus Capecitabine in Patients With Locally Advanced or Metastatic Breast Cancer Previously Treated With an Anthracycline and a Taxane. *J. Clin. Oncol.* **33**, 594–601 (2015).
13. Jerusalem, G. *et al.* Everolimus Plus Exemestane vs Everolimus or Capecitabine Monotherapy for Estrogen Receptor–Positive, HER2-Negative Advanced Breast Cancer: The BOLERO-6 Randomized Clinical Trial. *JAMA Oncol.* **4**, 1367 (2018).
14. Thomas, E. *et al.* Phase II Clinical Trial of Ixabepilone (BMS-247550), an Etoposide B Analog, in Patients With Taxane-Resistant Metastatic Breast Cancer. *J. Clin. Oncol.* **25**, 3399–3406 (2007).
15. Kaufman, B. *et al.* Lapatinib monotherapy in patients with HER2-overexpressing relapsed or refractory inflammatory breast cancer: final results and survival of the expanded HER2+ cohort in EGF103009, a phase II study. *Lancet Oncol.* **10**, 581–588 (2009).
16. Malorni, L. *et al.* Palbociclib as single agent or in combination with the endocrine therapy received before disease progression for estrogen receptor-positive, HER2-negative metastatic breast cancer: TReND trial. *Ann. Oncol.* **29**, 1748–1754 (2018).
17. Winer, E. P. *et al.* Pembrolizumab versus investigator-choice chemotherapy for metastatic triple-negative breast cancer (KEYNOTE-119): a randomised, open-label, phase 3 trial. *Lancet Oncol.* **22**, 499–511 (2021).
18. Vogel, C. L. *et al.* Efficacy and Safety of Trastuzumab as a Single Agent in First-Line Treatment of HER2-Overexpressing Metastatic Breast Cancer. *J. Clin. Oncol.* **20**, 719–26 (2002).
19. Monk, B. J. *et al.* Phase II Trial of Bevacizumab in the Treatment of Persistent or Recurrent Squamous Cell Carcinoma of the Cervix: A Gynecologic Oncology Group Study. *J. Clin. Oncol.* **27**, 1069–1074 (2009).
20. Sobrero, A. F., Pastorino, A., Sargent, D. J. & Bruzzi, P. Raising the Bar for Antineoplastic Agents: How to Choose Threshold Values for Superiority Trials in Advanced Solid Tumors. *Clin. Cancer Res.* **21**, 1036–1043 (2015).
21. Tang, P. A. *et al.* Phase II Clinical and Pharmacokinetic Study of Aflibercept in Patients with Previously Treated Metastatic Colorectal Cancer. *Clin. Cancer Res.* **18**, 6023–6031 (2012).
22. Vermorken, J. B. *et al.* Open-Label, Uncontrolled, Multicenter Phase II Study to Evaluate the Efficacy and Toxicity of Cetuximab As a Single Agent in Patients With Recurrent and/or Metastatic Squamous Cell Carcinoma of the Head and Neck Who Failed to Respond to Platinum-Based Therapy. *J. Clin. Oncol.* **25**, 2171–2177 (2007).

23. Byrd, J. C. *et al.* Randomized phase 2 study of obinutuzumab monotherapy in symptomatic, previously untreated chronic lymphocytic leukemia. *Blood* **127**, 79–86 (2016).
24. Rittmeyer, A. *et al.* Atezolizumab versus docetaxel in patients with previously treated non-small-cell lung cancer (OAK): a phase 3, open-label, multicentre randomised controlled trial. *The Lancet* **389**, 255–265 (2017).
25. Pujol, J.-L. *et al.* A Randomized Non-Comparative Phase II Study of Anti-Programmed Cell Death-Ligand 1 Atezolizumab or Chemotherapy as Second-Line Therapy in Patients With Small Cell Lung Cancer: Results From the IFCT-1603 Trial. *J. Thorac. Oncol.* **14**, 903–913 (2019).
26. Lara, P. N. *et al.* Gemcitabine in Patients with Non-Small-Cell Lung Cancer Previously Treated with Platinum-Based Chemotherapy: A Phase II California Cancer Consortium Trial. *Clin. Lung Cancer* **6**, 102–107 (2004).
27. Robert, C. *et al.* Five-year outcomes from a phase 3 METRIC study in patients with BRAF V600 E/K-mutant advanced or metastatic melanoma. *Eur. J. Cancer* **109**, 61–69 (2019).
28. Taylor, P. *et al.* Single-Agent Pemetrexed for Chemonaïve and Pretreated Patients with Malignant Pleural Mesothelioma: Results of an International Expanded Access Program. *J. Thorac. Oncol.* **3**, 764–771 (2008).
29. Hájek, R. *et al.* A randomized phase III study of carfilzomib vs low-dose corticosteroids with optional cyclophosphamide in relapsed and refractory multiple myeloma (FOCUS). *Leukemia* **31**, 107–114 (2017).
30. Lonial, S. *et al.* Daratumumab monotherapy in patients with treatment-refractory multiple myeloma (SIRIUS): an open-label, randomised, phase 2 trial. *The Lancet* **387**, 1551–1560 (2016).
31. Richardson, P. *et al.* Safety and efficacy of single-agent lenalidomide in patients with relapsed and refractory multiple myeloma. *Blood* **114**, 772–778 (2009).
32. Burger, R. A., Sill, M. W., Monk, B. J., Greer, B. E. & Sorosky, J. I. Phase II Trial of Bevacizumab in Persistent or Recurrent Epithelial Ovarian Cancer or Primary Peritoneal Cancer: A Gynecologic Oncology Group Study. *J. Clin. Oncol.* **25**, 5165–5171 (2007).
33. Cannistra, S. A. *et al.* Phase II Study of Bevacizumab in Patients With Platinum-Resistant Ovarian Cancer or Peritoneal Serous Cancer. *J. Clin. Oncol.* **25**, 5180–5186 (2007).
34. Chang, A. *et al.* Double-blind, randomized study of primary hormonal treatment of stage D2 prostate carcinoma: flutamide versus diethylstilbestrol. *J. Clin. Oncol.* **14**, 2250–2257 (1996).
35. Mok, T. S. *et al.* Pembrolizumab versus chemotherapy for previously untreated, PD-L1-expressing, locally advanced or metastatic non-small-cell lung cancer (KEYNOTE-042): a randomised, open-label, controlled, phase 3 trial. *The Lancet* **393**, 1819–1830 (2019).
36. Gandhi, L. *et al.* Pembrolizumab plus Chemotherapy in Metastatic Non-Small-Cell Lung Cancer. *N. Engl. J. Med.* **378**, 2078–2092 (2018).

37. Peeters, M. *et al.* Final results from a randomized phase 3 study of FOLFIRI {+/-} panitumumab for second-line treatment of metastatic colorectal cancer. *Ann. Oncol. Off. J. Eur. Soc. Med. Oncol.* **25**, 107–116 (2014).
38. Amado, R. G. *et al.* Wild-type KRAS is required for panitumumab efficacy in patients with metastatic colorectal cancer. *J. Clin. Oncol. Off. J. Am. Soc. Clin. Oncol.* **26**, 1626–1634 (2008).
39. Baselga, J. *et al.* Phase III trial of nonpegylated liposomal doxorubicin in combination with trastuzumab and paclitaxel in HER2-positive metastatic breast cancer. *Ann. Oncol. Off. J. Eur. Soc. Med. Oncol.* **25**, 592–598 (2014).
40. Harris, L. *et al.* Liposome-encapsulated doxorubicin compared with conventional doxorubicin in a randomized multicenter trial as first-line therapy of metastatic breast carcinoma. *Cancer* **94**, 25–36 (2002).
41. Reck, M. *et al.* Docetaxel plus nintedanib versus docetaxel plus placebo in patients with previously treated non-small-cell lung cancer (LUME-Lung 1): a phase 3, double-blind, randomised controlled trial. *Lancet Oncol.* **15**, 143–155 (2014).
42. Reck, M. *et al.* A phase II double-blind study to investigate efficacy and safety of two doses of the triple angiokinase inhibitor BIBF 1120 in patients with relapsed advanced non-small-cell lung cancer. *Ann. Oncol. Off. J. Eur. Soc. Med. Oncol.* **22**, 1374–1381 (2011).
43. van Oosterom, A. T. *et al.* Results of randomised studies of the EORTC Soft Tissue and Bone Sarcoma Group (STBSG) with two different ifosfamide regimens in first- and second-line chemotherapy in advanced soft tissue sarcoma patients. *Eur. J. Cancer Oxf. Engl. 1990* **38**, 2397–2406 (2002).
44. Satoh, T. *et al.* Lapatinib plus paclitaxel versus paclitaxel alone in the second-line treatment of HER2-amplified advanced gastric cancer in Asian populations: TyTAN--a randomized, phase III study. *J. Clin. Oncol. Off. J. Am. Soc. Clin. Oncol.* **32**, 2039–2049 (2014).
45. Lorenzen, S. *et al.* Lapatinib versus lapatinib plus capecitabine as second-line treatment in human epidermal growth factor receptor 2-amplified metastatic gastro-oesophageal cancer: a randomised phase II trial of the Arbeitsgemeinschaft Internistische Onkologie. *Eur. J. Cancer Oxf. Engl. 1990* **51**, 569–576 (2015).
46. Ang, K. K. *et al.* Randomized phase III trial of concurrent accelerated radiation plus cisplatin with or without cetuximab for stage III to IV head and neck carcinoma: RTOG 0522. *J. Clin. Oncol. Off. J. Am. Soc. Clin. Oncol.* **32**, 2940–2950 (2014).
47. Gligorov, J. *et al.* Maintenance capecitabine and bevacizumab versus bevacizumab alone after initial first-line bevacizumab and docetaxel for patients with HER2-negative metastatic breast cancer (IMELDA): a randomised, open-label, phase 3 trial. *Lancet Oncol.* **15**, 1351–1360 (2014).
48. Babacan, T. *et al.* Efficacy of capecitabine monotherapy as the first-line treatment of metastatic HER2-negative breast cancer. *Tumori* **101**, 418–423 (2015).

49. Tournigand, C. *et al.* Bevacizumab with or without erlotinib as maintenance therapy in patients with metastatic colorectal cancer (GERCOR DREAM; OPTIMO3): a randomised, open-label, phase 3 trial. *Lancet Oncol.* **16**, 1493–1505 (2015).
50. Townsley, C. A. *et al.* Phase II study of erlotinib (OSI-774) in patients with metastatic colorectal cancer. *Br. J. Cancer* **94**, 1136–1143 (2006).
51. Hagman, H. *et al.* A randomized study of KRAS-guided maintenance therapy with bevacizumab, erlotinib or metronomic capecitabine after first-line induction treatment of metastatic colorectal cancer: the Nordic ACT2 trial. *Ann. Oncol. Off. J. Eur. Soc. Med. Oncol.* **27**, 140–147 (2016).
52. du Bois, A. *et al.* Standard first-line chemotherapy with or without nintedanib for advanced ovarian cancer (AGO-OVAR 12): a randomised, double-blind, placebo-controlled phase 3 trial. *Lancet Oncol.* **17**, 78–89 (2016).
53. Ledermann, J. A. *et al.* Randomized phase II placebo-controlled trial of maintenance therapy using the oral triple angiokinase inhibitor BIBF 1120 after chemotherapy for relapsed ovarian cancer. *J. Clin. Oncol. Off. J. Am. Soc. Clin. Oncol.* **29**, 3798–3804 (2011).
54. Hecht, J. R. *et al.* Lapatinib in Combination With Capecitabine Plus Oxaliplatin in Human Epidermal Growth Factor Receptor 2-Positive Advanced or Metastatic Gastric, Esophageal, or Gastroesophageal Adenocarcinoma: TRIO-013/LOGiC--A Randomized Phase III Trial. *J. Clin. Oncol. Off. J. Am. Soc. Clin. Oncol.* **34**, 443–451 (2016).
55. Chanan-Khan, A. *et al.* Ibrutinib combined with bendamustine and rituximab compared with placebo, bendamustine, and rituximab for previously treated chronic lymphocytic leukaemia or small lymphocytic lymphoma (HELIOS): a randomised, double-blind, phase 3 study. *Lancet Oncol.* **17**, 200–211 (2016).
56. Byrd, J. C. *et al.* Ibrutinib versus ofatumumab in previously treated chronic lymphoid leukemia. *N. Engl. J. Med.* **371**, 213–223 (2014).
57. Ledermann, J. A. *et al.* Cediranib in patients with relapsed platinum-sensitive ovarian cancer (ICON6): a randomised, double-blind, placebo-controlled phase 3 trial. *Lancet Lond. Engl.* **387**, 1066–1074 (2016).
58. Matulonis, U. A. *et al.* Cediranib, an oral inhibitor of vascular endothelial growth factor receptor kinases, is an active drug in recurrent epithelial ovarian, fallopian tube, and peritoneal cancer. *J. Clin. Oncol. Off. J. Am. Soc. Clin. Oncol.* **27**, 5601–5606 (2009).
59. Gill, S. *et al.* PANCREOX: A Randomized Phase III Study of Fluorouracil/Leucovorin With or Without Oxaliplatin for Second-Line Advanced Pancreatic Cancer in Patients Who Have Received Gemcitabine-Based Chemotherapy. *J. Clin. Oncol. Off. J. Am. Soc. Clin. Oncol.* **34**, 3914–3920 (2016).
60. Ducreux, M. *et al.* Randomized phase II study evaluating oxaliplatin alone, oxaliplatin combined with infusional 5-FU, and infusional 5-FU alone in advanced pancreatic carcinoma patients. *Ann. Oncol. Off. J. Eur. Soc. Med. Oncol.* **15**, 467–473 (2004).
61. Martin, M. *et al.* Randomised phase III trial of vinflunine plus capecitabine versus capecitabine alone in patients with advanced breast cancer previously treated with an

- anthracycline and resistant to taxane. *Ann. Oncol. Off. J. Eur. Soc. Med. Oncol.* **29**, 1195–1202 (2018).
62. Garrido-Castro, A. C. *et al.* Phase 2 study of buparlisib (BKM120), a pan-class I PI3K inhibitor, in patients with metastatic triple-negative breast cancer. *Breast Cancer Res. BCR* **22**, 120 (2020).
 63. Zhang, P. *et al.* Phase II trial of utidelone as monotherapy or in combination with capecitabine in heavily pretreated metastatic breast cancer patients. *J. Hematol. Oncol./Hematol Oncol* **9**, 68 (2016).
 64. Zhang, P. *et al.* Utidelone plus capecitabine versus capecitabine alone for heavily pretreated metastatic breast cancer refractory to anthracyclines and taxanes: a multicentre, open-label, superiority, phase 3, randomised controlled trial. *Lancet Oncol.* **18**, 371–383 (2017).
 65. Cortes, J. *et al.* Open-label randomised phase III trial of vinflunine versus an alkylating agent in patients with heavily pretreated metastatic breast cancer. *Ann. Oncol. Off. J. Eur. Soc. Med. Oncol.* **29**, 881–887 (2018).
 66. Carvajal, R. D. *et al.* Effect of selumetinib vs chemotherapy on progression-free survival in uveal melanoma: a randomized clinical trial. *JAMA* **311**, 2397–2405 (2014).
 67. Carvajal, R. D. *et al.* Selumetinib in Combination With Dacarbazine in Patients With Metastatic Uveal Melanoma: A Phase III, Multicenter, Randomized Trial (SUMIT). *J. Clin. Oncol. Off. J. Am. Soc. Clin. Oncol.* **36**, 1232–1239 (2018).
 68. Dimopoulos, M. A. *et al.* Phase 3 Trial of Ibrutinib plus Rituximab in Waldenström’s Macroglobulinemia. *N. Engl. J. Med.* **378**, 2399–2410 (2018).
 69. Treon, S. P. *et al.* Ibrutinib in previously treated Waldenström’s macroglobulinemia. *N. Engl. J. Med.* **372**, 1430–1440 (2015).