

**Post COVID-19 Condition, Work Ability and Occupational Changes: Results from a Population-based Cohort**

Philipp Kerksieck<sup>1\*</sup>, Tala Ballouz<sup>1\*</sup>, Sarah R. Haile<sup>1</sup>, Celine Schumacher<sup>1</sup>, Joanne Lacy<sup>1</sup>, Anja Domenghino<sup>1,2</sup>, Jan S. Fehr<sup>1</sup>, Georg F. Bauer<sup>1</sup>, Holger Dressel<sup>1</sup>, Milo A. Puhan<sup>1†</sup>, Dominik Menges<sup>1</sup>

<sup>1</sup> *Epidemiology, Biostatistics and Prevention Institute (EBPI), University of Zurich (UZH), Zurich, Switzerland*

<sup>2</sup> *Department of Visceral and Transplantation Surgery, University Hospital Zurich (USZ), Zurich, Switzerland*

*\* These authors share first authorship due to equal contribution.*

**† Corresponding author:** Milo A. Puhan, Epidemiology, Biostatistics and Prevention Institute (EBPI), University of Zurich (UZH), Hirschengraben 84, CH-8001 Zurich, Switzerland, Phone: +41 44 634 46 10, Email: miloalan.puhan@uzh.ch

18 **Supplementary Methods**

19 **Supplementary Table S1. Details on outcome measurement and definitions.**

Outcome	Instrument & question wording	Definition/Categories
<b>Work ability and occupational changes</b>		
Current work ability	Work ability index (1–3) <ul style="list-style-type: none"> <li>“Assume that your work ability at its best has a value of 10 points. How many points would you give your current work ability? (0 means that you currently cannot work at all) – (10 work ability at its best)”</li> </ul>	Self-perceived current work ability compared to highest work ability ever.  Categorical classification based on von Bonsdorff et al.(4): <ul style="list-style-type: none"> <li>Poor (score ≤6)</li> <li>Moderate (score 7-8)</li> <li>Excellent (score ≥9)</li> </ul>
Work ability related to physical demands	Work ability index (1–3) <ul style="list-style-type: none"> <li>“How do you rate your current work ability with respect to the physical demands of your work? (Likert scale from very good to very poor)”</li> </ul>	Self-perceived current work ability in relation to physical demands of work.
Work ability related to mental demands	Work ability index (1–3) <ul style="list-style-type: none"> <li>“How do you rate your current work ability with respect to the mental demands of your work? (Likert scale from very good to very poor)”</li> </ul>	Self-perceived current work ability in relation to mental demands of work.
Estimated future work ability in 2 years	Work ability index (1–3) <ul style="list-style-type: none"> <li>“Do you believe, according to your present state of health, that you will be able to do your current job two years from now? (Unlikely, not certain, relatively certain)”</li> </ul>	Self-perceived estimated work ability in 2 years based on current health status.
Occupational changes	<ul style="list-style-type: none"> <li>“Has your occupational situation changed in the last six months? (Yes, No)”</li> <li>“How has your professional situation changed? (I have retired, I am on permanent sick leave, I am on work leave for a different reason, I have started self-employment, I work at a new workplace, I work in a new position within the same</li> </ul>	Question regarding changes in occupational situation was asked at 6 months and 12 months after infection.  Occupational changes related to post COVID-19 condition were determined based on a pre-defined list of changes and further information provided through comments in free text fields. Phone interviews were conducted for all

Outcome	Instrument & question wording	Definition/Categories
	<i>workplace, I have started professional training or university studies, I am temporarily out of work due to lack of demand, I have lost my employment, Other reason (specify))”</i>	participants with PCC where no further information on the specific occupational change was provided by the participant or where the relation to COVID-19 was unequivocal.
<b>Post COVID-19 condition</b>		
PCC status	<ul style="list-style-type: none"> <li>“In the past 7 days, have you had one or more of the following symptoms that are unrelated to a chronic illness or allergy? (Fatigue, Post-exertional malaise, Fever, Cough, Dyspnea or shortness of breath, Chest pain, Heart palpitations, Altered taste and/or smell, Headache, Concentration difficulties, Memory problems, Vertigo or dizziness, Tremors, Tingling sensation of extremities, Sleep disturbances, Myalgia Arthralgia, Gastrointestinal disturbances, Swallowing difficulties, Hearing problems, Visual disturbances, Skin rash, Hair loss)”</li> <li>“Do you think this symptom is related to or a complication of coronavirus disease "COVID-19"? (No, Yes, I don't know)”</li> </ul>	Presence of at least one symptom in a list of 23 common PCC-related symptoms that were reported by participants to be related to PCC.
Non-recovery and health impairment status	<ul style="list-style-type: none"> <li>Self-reported recovery status: “How do you feel now compared to when you were infected? (fully recovered and symptom free, better but not fully recovered, neither better nor worse, worse)”</li> <li>EQ-VAS</li> </ul>	<ol style="list-style-type: none"> <li><b>Recovered:</b> participants reporting to fully recovered to their normal health status and symptom-free, or unchanged if asymptomatic at infection.</li> <li><b>Non-recovered with mild health impairment:</b> participants reporting not to be back to their normal health status and reporting EQ-VAS scores &gt;70.</li> <li><b>Non-recovered with moderate health impairment:</b> participants reporting not to be back to their normal health status and</li> </ol>

Outcome	Instrument & question wording	Definition/Categories
		<p>reporting EQ-VAS scores between 51–70.</p> <p>4. <b>Non-recovered with severe health impairment:</b> participants reporting not to be back to their normal health status and reporting EQ-VAS scores <math>\leq 50</math>.</p> <p>EQ-VAS cut-offs were determined based on population-normative values from prior research (5–8).</p>
Individual PCC-related symptoms	<ul style="list-style-type: none"> <li>• «In the past 7 days, have you had one or more of the following symptoms that are unrelated to a chronic illness or allergy? (symptom list as above)»</li> <li>• “Do you think this symptom is related to or a complication of coronavirus disease “COVID-19”? (No, Yes, I don’t know)”</li> </ul>	Presence of each individual symptom in a list of 23 common PCC-related symptoms (see above) that were reported by participants to be related to PCC.
Symptom clusters	<ul style="list-style-type: none"> <li>• Fatigue/physical exertion (defined as presence of fatigue or physical exertion)</li> <li>• Cardiorespiratory (defined as presence of dyspnea, palpitation, or chest pain)</li> <li>• Neurocognitive (defined as concentration, memory, or sleeping problems)</li> </ul>	Presence of symptoms belonging to each symptom cluster.
Health-related quality of life (HRQoL)	EQ-5D-5L	Presence of problems in 5 dimensions (mobility, self-care, usual activities, depression or anxiety, pain or discomfort).
Fatigue	FAS	Presence of fatigue (defined as FAS score $\geq 22$ ).
Depression, anxiety or stress	DASS-21	Presence of depression (defined as score $\geq 10$ in depression-related items), anxiety (score $\geq 8$ in anxiety-related items), or stress (score $\geq 15$ in stress-related items).
Dyspnea	mMRC dyspnea scale	Degree of functional disability due to dyspnea (defined as mMRC dyspnea grade $\geq 1$ ).

Legend: DASS-21, 21-item Depression, Anxiety and Stress Scale; EQ-VAS, EuroQol visual analog scale; EQ-5D-5L, EuroQol 5-dimension 5-level scale; FAS, Fatigue Assessment Scale; mMRC, modified Medical Research Council scale; PCC, post COVID-19 condition.

## References

1. Ilmarinen J. Work ability—a comprehensive concept for occupational health research and prevention. *Scandinavian Journal of Work, Environment & Health*. 2009;35(1):1–5.
2. van den Berg TIJ, Elders L a. M, Zwart BCH de, Burdorf A. The effects of work-related and individual factors on the Work Ability Index: a systematic review. *Occupational and Environmental Medicine*. 2009 Apr 1;66(4):211–20.
3. Ahlstrom L, Grimby-Ekman A, Hagberg M, Dellve L. The work ability index and single-item question: associations with sick leave, symptoms, and health – a prospective study of women on long-term sick leave. *Scandinavian Journal of Work, Environment & Health*. 2010;36(5):404–12.
4. von Bonsdorff MB, Seitsamo J, Ilmarinen J, Nygård CH, von Bonsdorff ME, Rantanen T. Work ability in midlife as a predictor of mortality and disability in later life: a 28-year prospective follow-up study. *CMAJ*. 2011 Mar 8;183(4):E235–42.
5. Perneger TV, Combescure C, Courvoisier DS. General Population Reference Values for the French Version of the EuroQol EQ-5D Health Utility Instrument. *Value in Health*. 2010 Jul;13(5):631–5.
6. Zanini A, Aiello M, Adamo D, Casale S, Cherubino F, Patrona SD, et al. Estimation of Minimal Clinically Important Difference in EQ-5D Visual Analog Scale Score After Pulmonary Rehabilitation in Subjects With COPD. *Respiratory Care*. 2015 Jan 1;60(1):88–95.
7. Wacker ME, Jörres RA, Karch A, Wilke S, Heinrich J, Karrasch S, et al. Assessing health-related quality of life in COPD: comparing generic and disease-specific instruments with focus on comorbidities. *BMC Pulmonary Medicine*. 2016 May 10;16(1):70.
8. Ballouz T, Menges D, Anagnostopoulos A, Domenghino A, Aschmann HE, Frei A, et al. Natural course of post COVID-19 condition and implications for trial design and outcome selection: A population-based longitudinal cohort study. *medRxiv*. 2022.

49 **Supplementary Results**

50 **Supplementary Table S2: Detailed study population characteristics, stratified by presence of COVID-19 related symptoms (post COVID-19 condition) and**  
 51 **(non-)recovery and health impairment status at 12 months.**

	PCC status		(Non-)recovery and health impairment status				Overall
	No PCC (N=552)	PCC (N=120)	Recovered (N=562)	Mild (N=72)	Moderate (N=13)	Severe (N=8)	(N=672)
<b>Age (years)</b>							
Mean (SD)	41.1 (12.2)	46.6 (10.9)	41.2 (12.2)	46.0 (11.4)	49.2 (8.8)	49.5 (12.8)	42.1 (12.2)
Median (IQR)	41.0 (30.8 to 51.2)	50.0 (38.0 to 55.0)	41.5 (30.0 to 51.8)	48.0 (35.8 to 55.2)	51.0 (45.0 to 56.0)	53.0 (45.0 to 58.0)	43.0 (31.0 to 53.0)
Range	18 to 63	21 to 62	18 to 63	25 to 62	32 to 59	24 to 62	18 to 63
<b>Age group</b>							
18-39 years	249 (45.1%)	33 (27.5%)	250 (44.5%)	22 (30.6%)	3 (23.1%)	2 (25.0%)	282 (42.0%)
40-64 years	303 (54.9%)	87 (72.5%)	312 (55.5%)	50 (69.4%)	10 (76.9%)	6 (75.0%)	390 (58.0%)
<b>Sex</b>							
female	285 (51.6%)	79 (65.8%)	292 (52.0%)	47 (65.3%)	11 (84.6%)	6 (75.0%)	364 (54.2%)
male	267 (48.4%)	41 (34.2%)	270 (48.0%)	25 (34.7%)	2 (15.4%)	2 (25.0%)	308 (45.8%)
<b>Symptom count at infection</b>							
Asymptomatic	67 (12.1%)	12 (10.0%)	70 (12.5%)	5 (6.9%)	1 (7.7%)	1 (12.5%)	79 (11.8%)
1-5 symptoms	233 (42.2%)	33 (27.5%)	230 (40.9%)	25 (34.7%)	1 (7.7%)	3 (37.5%)	266 (39.6%)
≥6 symptoms	252 (45.7%)	75 (62.5%)	262 (46.6%)	42 (58.3%)	11 (84.6%)	4 (50.0%)	327 (48.7%)
<b>Hospitalization at infection</b>							
Non-hospitalized	547 (99.1%)	115 (95.8%)	559 (99.5%)	69 (95.8%)	11 (84.6%)	7 (87.5%)	662 (98.5%)
Hospitalized	5 (0.9%)	5 (4.2%)	3 (0.5%)	3 (4.2%)	2 (15.4%)	1 (12.5%)	10 (1.5%)
with ICU stay	0 (0.0%)	1 (0.8%)	0 (0.0%)	0 (0.0%)	1 (7.7%)	0 (0.0%)	1 (0.1%)

**Smoking status**

Non-smoker	343 (62.4%)	70 (58.3%)	347 (62.0%)	42 (58.3%)	9 (69.2%)	6 (75.0%)	413 (61.6%)
Ex-smoker	123 (22.4%)	33 (27.5%)	127 (22.7%)	20 (27.8%)	2 (15.4%)	1 (12.5%)	156 (23.3%)
Smoker	84 (15.3%)	17 (14.2%)	86 (15.4%)	10 (13.9%)	2 (15.4%)	1 (12.5%)	101 (15.1%)
Missing	2 (0.4%)	0 (0%)	2 (0.4%)	0 (0%)	0 (0%)	0 (0%)	2 (0.3%)

**BMI (kg/sqm)**

Mean (SD)	24.2 (4.3)	25.6 (5.1)	24.3 (4.3)	24.9 (4.7)	29.9 (7.5)	22.4 (1.9)	24.4 (4.5)
Median (IQR)	23.6 (21.5 to 25.9)	24.8 (22.1 to 28.6)	23.6 (21.5 to 26.0)	24.5 (21.7 to 27.0)	30.4 (26.0 to 31.1)	22.3 (20.7 to 23.7)	23.7 (21.5 to 26.2)
Range	13 to 63	17 to 45	17 to 63	18 to 40	20 to 45	20 to 25	13 to 63
Missing	5 (0.9%)	1 (0.8%)	6 (1.1%)	0 (0%)	0 (0%)	0 (0%)	6 (0.9%)

**Comorbidity\***

None	453 (82.1%)	79 (65.8%)	460 (81.9%)	49 (68.1%)	6 (46.2%)	4 (50.0%)	532 (79.2%)
1 comorbidity	80 (14.5%)	33 (27.5%)	85 (15.1%)	18 (25.0%)	5 (38.5%)	3 (37.5%)	113 (16.8%)
≥2 comorbidities	19 (3.4%)	8 (6.7%)	17 (3.0%)	5 (6.9%)	2 (15.4%)	1 (12.5%)	27 (4.0%)

**Comorbidity count\***

Median (IQR)	0 (0 to 0)	0 (0 to 1)	0 (0 to 0)	0 (0 to 1)	1 (0 to 1)	0.5 (0 to 1)	0 (0 to 0)
Range	0 to 3	0 to 2	0 to 3	0 to 2	0 to 2	0 to 2	0 to 3

**History of psychiatric diagnosis**

None	472 (88.6%)	93 (78.8%)	486 (87.7%)	63 (87.5%)	6 (50.0%)	5 (62.5%)	565 (86.8%)
Any	61 (11.4%)	25 (21.2%)	68 (12.3%)	9 (12.5%)	6 (50.0%)	3 (37.5%)	86 (13.2%)
Depression	27 (4.9%)	18 (15.0%)	32 (5.7%)	5 (6.9%)	5 (38.5%)	3 (37.5%)	45 (6.7%)
Anxiety	12 (2.2%)	2 (1.7%)	13 (2.3%)	0 (0.0%)	0 (0.0%)	1 (12.5%)	14 (2.1%)
Burnout	6 (1.1%)	3 (2.5%)	6 (1.1%)	1 (1.4%)	2 (15.4%)	0 (0.0%)	9 (1.3%)
Bipolar disorder	2 (0.4%)	0 (0.0%)	2 (0.4%)	0 (0.0%)	0 (0.0%)	0 (0.0%)	2 (0.3%)
ADHD	2 (0.4%)	1 (0.8%)	2 (0.4%)	1 (1.4%)	0 (0.0%)	0 (0.0%)	3 (0.4%)
PTSD	4 (0.7%)	1 (0.8%)	4 (0.7%)	0 (0.0%)	0 (0.0%)	1 (12.5%)	5 (0.7%)

Eating disorder	1 (0.2%)	1 (0.8%)	2 (0.4%)	0 (0.0%)	0 (0.0%)	0 (0.0%)	2 (0.3%)
Sleep disorder	2 (0.4%)	0 (0.0%)	2 (0.4%)	0 (0.0%)	0 (0.0%)	0 (0.0%)	2 (0.3%)
Other	2 (0.4%)	0 (0.0%)	2 (0.4%)	0 (0.0%)	0 (0.0%)	0 (0.0%)	2 (0.3%)
<i>Missing</i>	<i>19 (3.4%)</i>	<i>2 (1.7%)</i>	<i>8 (1.4%)</i>	<i>0 (0%)</i>	<i>1 (7.7%)</i>	<i>0 (0%)</i>	<i>21 (3.1%)</i>
<b>Education level</b>							
None or mandatory school	17 (3.1%)	5 (4.2%)	16 (2.9%)	4 (5.6%)	0 (0.0%)	0 (0.0%)	22 (3.3%)
Vocational training or specialized baccalaureate	194 (35.1%)	55 (46.6%)	199 (35.5%)	33 (46.5%)	7 (53.8%)	3 (37.5%)	249 (37.2%)
Higher technical school or college	165 (29.9%)	29 (24.6%)	173 (30.8%)	16 (22.5%)	2 (15.4%)	2 (25.0%)	194 (29.0%)
University	176 (31.9%)	29 (24.6%)	173 (30.8%)	18 (25.4%)	4 (30.8%)	3 (37.5%)	205 (30.6%)
<i>Missing</i>	<i>0 (0%)</i>	<i>2 (1.7%)</i>	<i>1 (0.2%)</i>	<i>1 (1.4%)</i>	<i>0 (0%)</i>	<i>0 (0%)</i>	<i>2 (0.3%)</i>
<b>Employment at infection</b>							
Employed or self-employed	488 (88.4%)	99 (82.5%)	494 (87.9%)	61 (84.7%)	11 (84.6%)	4 (50.0%)	587 (87.4%)
Student	42 (7.6%)	4 (3.3%)	45 (8.0%)	1 (1.4%)	0 (0.0%)	0 (0.0%)	46 (6.8%)
Housewife/family manager	9 (1.6%)	1 (0.8%)	9 (1.6%)	1 (1.4%)	0 (0.0%)	0 (0.0%)	10 (1.5%)
Unemployed	9 (1.6%)	10 (8.3%)	10 (1.8%)	7 (9.7%)	1 (7.7%)	1 (12.5%)	19 (2.8%)
Disability insurance benefits	0 (0.0%)	4 (3.3%)	0 (0.0%)	0 (0.0%)	1 (7.7%)	3 (37.5%)	4 (0.6%)
Other	4 (0.7%)	2 (1.7%)	4 (0.7%)	2 (2.8%)	0 (0.0%)	0 (0.0%)	6 (0.9%)
<b>Income</b>							
<6'000 CHF	149 (28.0%)	40 (34.8%)	156 (28.7%)	23 (32.9%)	3 (25.0%)	4 (50.0%)	189 (29.2%)
6'000 - 12'000 CHF	231 (43.3%)	52 (45.2%)	234 (43.1%)	33 (47.1%)	7 (58.3%)	1 (12.5%)	283 (43.7%)
>12'000 CHF	153 (28.7%)	23 (20.0%)	153 (28.2%)	14 (20.0%)	2 (16.7%)	3 (37.5%)	176 (27.2%)
<i>Missing</i>	<i>19 (3.4%)</i>	<i>5 (4.2%)</i>	<i>19 (3.4%)</i>	<i>2 (2.8%)</i>	<i>1 (7.7%)</i>	<i>0 (0%)</i>	<i>24 (3.6%)</i>
<b>Nationality</b>							
Swiss	465 (84.2%)	97 (80.8%)	479 (85.2%)	56 (77.8%)	9 (69.2%)	7 (87.5%)	562 (83.6%)
Non-Swiss	87 (15.8%)	23 (19.2%)	83 (14.8%)	16 (22.2%)	4 (30.8%)	1 (12.5%)	110 (16.4%)



52    Legend: ADHD, attention deficit hyperactivity disorder; BMI, body mass index; CHF, Swiss Francs; ICU, intensive care unit; IQR, interquartile range; PCC, post  
53    COVID-19 condition; PTSD, post-traumatic stress disorder; SD, standard deviation. \* Comorbidities were assessed as any of the following: hypertension, diabetes,  
54    cardiovascular disease, chronic respiratory disease, chronic kidney disease, past or present malignancy, or immune suppression.

55

56

57 **Supplementary Table S3: Work ability outcomes, stratified by post COVID-19 condition (defined as presence of COVID-19 related symptoms) and (non-**  
58 **)recovery and health impairment status at 12 months.**

	PCC status		(Non-)recovery and health impairment status				Overall (N=672)
	No PCC	PCC	Recovered	Mild	Moderate	Severe	
	(N=552)	(N=120)	(N=562)	(N=72)	(N=13)	(N=8)	
<b>Current work ability (score)</b>							
Mean (SD)	8.9 (1.5)	7.9 (2.2)	8.9 (1.4)	8.4 (1.0)	4.9 (2.1)	3.4 (2.9)	8.7 (1.7)
Median (IQR)	9.0 (8.0 to 10.0)	8.0 (7.0 to 9.0)	9.0 (8.0 to 10.0)	8.0 (8.0 to 9.0)	5.0 (4.0 to 6.0)	3.5 (0.8 to 5.2)	9.0 (8.0 to 10.0)
Range	0 to 10	0 to 10	0 to 10	5 to 10	1 to 9	0 to 8	0 to 10
Missing	15 (2.7%)	1 (0.8%)	7 (1.2%)	0 (0%)	0 (0%)	0 (0%)	16 (2.4%)
<b>Current work ability (categorical)</b>							
Poor (score ≤6)	27 (5.0%)	20 (16.8%)	23 (4.1%)	2 (2.8%)	10 (76.9%)	7 (87.5%)	47 (7.2%)
Moderate (score 7-8)	137 (25.5%)	42 (35.3%)	137 (24.7%)	38 (52.8%)	2 (15.4%)	1 (12.5%)	179 (27.3%)
Excellent (score ≥9)	373 (69.5%)	57 (47.9%)	395 (71.2%)	32 (44.4%)	1 (7.7%)	0 (0.0%)	430 (65.5%)
Missing	15 (2.7%)	1 (0.8%)	7 (1.2%)	0 (0%)	0 (0%)	0 (0%)	16 (2.4%)
<b>Work ability related to physical demands</b>							
Very bad	2 (0.4%)	3 (2.5%)	2 (0.4%)	0 (0.0%)	1 (7.7%)	1 (14.3%)	5 (0.8%)
Rather bad	6 (1.1%)	5 (4.2%)	4 (0.7%)	0 (0.0%)	2 (15.4%)	2 (28.6%)	11 (1.7%)
Moderate	21 (3.9%)	24 (20.3%)	22 (4.0%)	13 (18.1%)	6 (46.2%)	3 (42.9%)	45 (6.9%)
Rather good	115 (21.4%)	39 (33.1%)	118 (21.3%)	30 (41.7%)	4 (30.8%)	1 (14.3%)	154 (23.5%)
Very good	393 (73.2%)	47 (39.8%)	409 (73.7%)	29 (40.3%)	0 (0.0%)	0 (0.0%)	440 (67.2%)
Missing	15 (2.7%)	2 (1.7%)	7 (1.2%)	0 (0%)	0 (0%)	1 (12.5%)	17 (2.5%)
<b>Work ability related to mental demands</b>							
Very bad	2 (0.4%)	2 (1.7%)	2 (0.4%)	0 (0.0%)	0 (0.0%)	1 (14.3%)	4 (0.6%)

Rather bad	2 (0.4%)	5 (4.2%)	1 (0.2%)	0 (0.0%)	3 (23.1%)	1 (14.3%)	7 (1.1%)
Moderate	49 (9.2%)	23 (19.5%)	45 (8.1%)	15 (20.8%)	5 (38.5%)	4 (57.1%)	72 (11.0%)
Rather good	170 (31.8%)	46 (39.0%)	176 (31.8%)	33 (45.8%)	5 (38.5%)	1 (14.3%)	216 (33.1%)
Very good	312 (58.3%)	42 (35.6%)	329 (59.5%)	24 (33.3%)	0 (0.0%)	0 (0.0%)	354 (54.2%)
<i>Missing</i>	<i>17 (3.1%)</i>	<i>2 (1.7%)</i>	<i>9 (1.6%)</i>	<i>0 (0%)</i>	<i>0 (0%)</i>	<i>1 (12.5%)</i>	<i>19 (2.8%)</i>
<b>Estimated work ability in future (2 years)</b>							
Unlikely	12 (2.2%)	6 (5.1%)	11 (2.0%)	3 (4.2%)	0 (0.0%)	3 (37.5%)	18 (2.8%)
Not certain	24 (4.5%)	13 (11.1%)	23 (4.2%)	4 (5.6%)	5 (41.7%)	2 (25.0%)	37 (5.7%)
Relatively certain	501 (93.3%)	98 (83.8%)	520 (93.9%)	65 (90.3%)	7 (58.3%)	3 (37.5%)	599 (91.6%)
<i>Missing</i>	<i>15 (2.7%)</i>	<i>3 (2.5%)</i>	<i>8 (1.4%)</i>	<i>0 (0%)</i>	<i>1 (7.7%)</i>	<i>0 (0%)</i>	<i>18 (2.7%)</i>

---

Legend: IQR, interquartile range; PCC, post COVID-19 condition; SD, standard deviation.

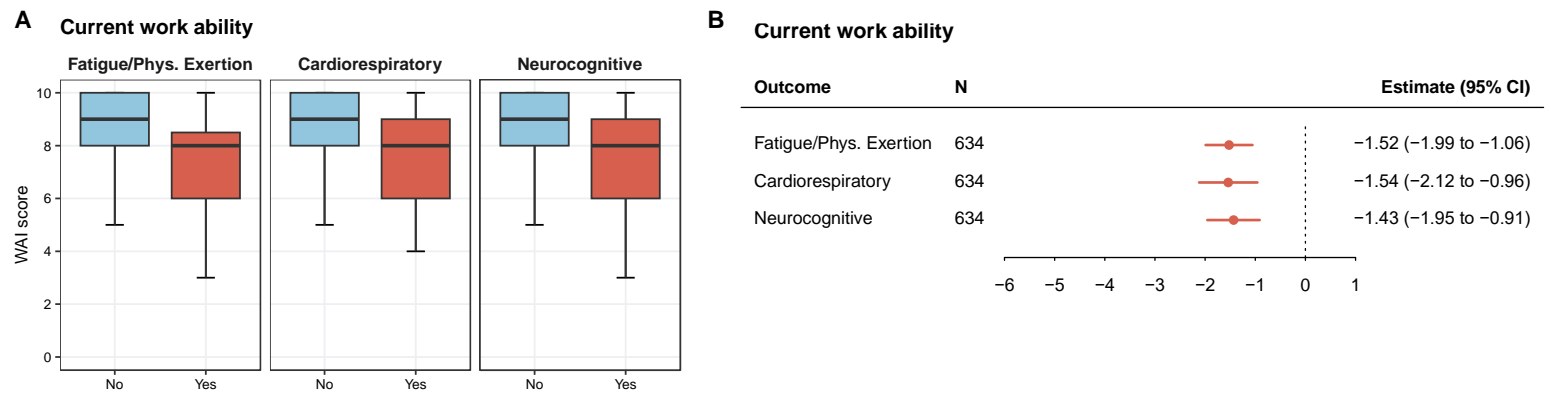
62 **Supplementary Figure S1: Sensitivity analysis of post COVID-19 condition and non-recovery and health impairment at 12 months, treating current work**  
63 **ability scores as ordinal outcome.** Current work ability was recategorized into poor (current work ability scores <7), moderate (scores 7–8), and excellent (scores ≥9)  
64 work ability for descriptive analyses (panels A–B), and scores from 1–10 were used for multivariable ordinal logistic regression models (panel C). Regression models  
65 were adjusted for sex, age, education level, baseline EuroQol visual analog scale (EQ-VAS), comorbidity count, history of psychiatric diagnosis, and hospitalization at  
66 acute infection. Separate models were estimated for the two definitions based on COVID-19 related symptoms (PCC vs. no PCC) and (non-)recovery (severe, moderate  
67 or mild health impairment vs. recovery). Legend: CI, confidence interval; OR, odds ratio; PCC, post COVID-19 condition; Ref., reference.



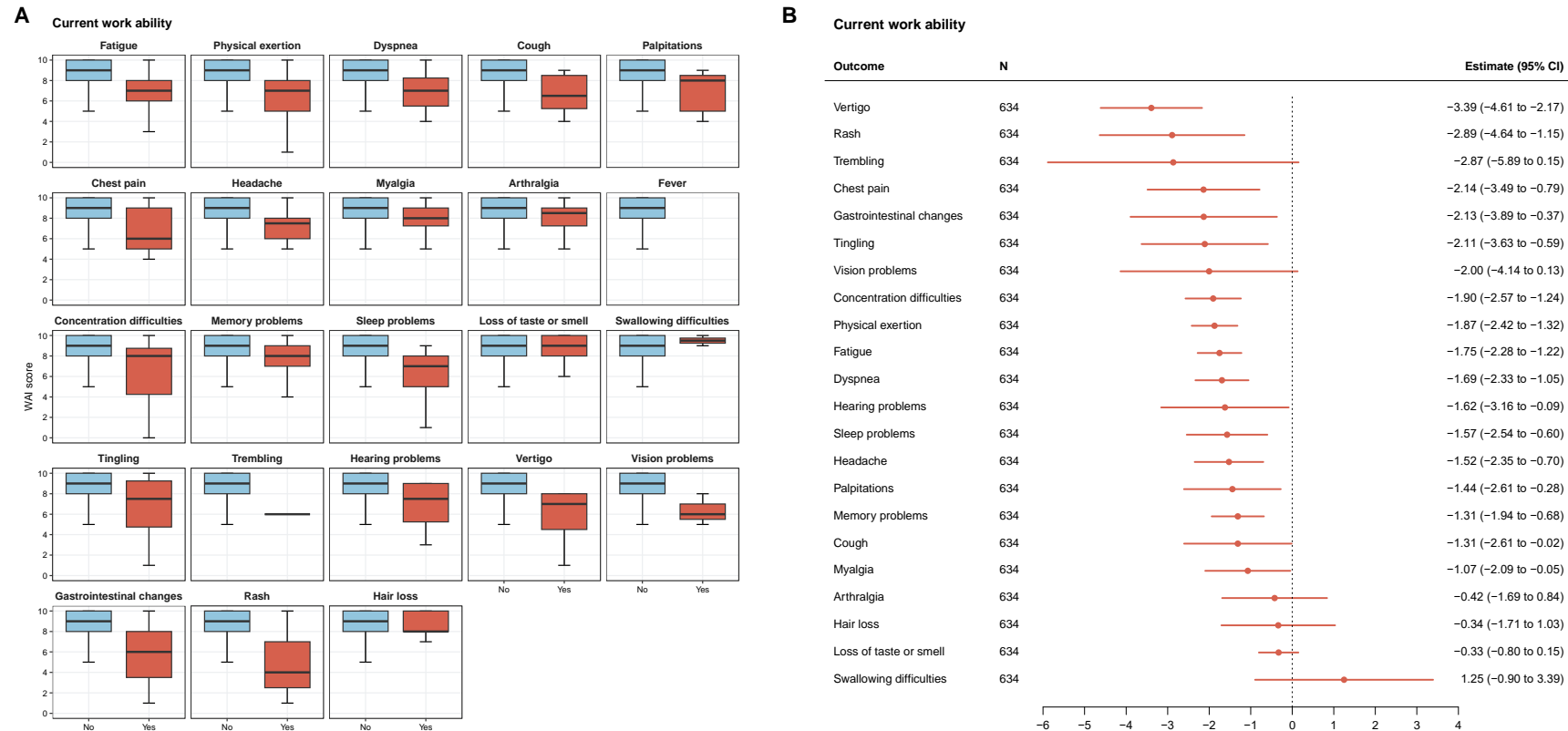
68

69

70 **Supplementary Figure S2: Current work ability stratified by presence of COVID-19 related symptom clusters at 12 months.** Results from descriptive analyses  
71 (panel A) and multivariable linear regression analyses (panel B) are presented. Regression models were adjusted for sex, age, education level, baseline EuroQol visual  
72 analog scale (EQ-VAS), comorbidity count, history of psychiatric diagnosis, and hospitalization at acute infection. Separate models were estimated for each symptom  
73 cluster. Legend: CI, confidence interval; Phys., physical.



76 **Supplementary Figure S3: Current work ability stratified by presence of individual COVID-19 related symptom clusters at 12 months.** Results from descriptive  
77 analyses (panel A) and multivariable linear regression analyses (panel B) are presented. Regression models were adjusted for sex, age, education level, baseline EuroQol  
78 visual analog scale (EQ-VAS), comorbidity count, history of psychiatric diagnosis, and hospitalization at acute infection. Separate models were estimated for each  
79 individual symptom. Legend: CI, confidence interval.



81 **Supplementary Table S4: Work ability outcomes, stratified by presence of post COVID-19 condition related symptom clusters.**

	Fatigue/physical exertion		Cardiorespiratory		Neurocognitive	
	Absent (N=620)	Present (N=52)	Absent (N=642)	Present (N=30)	Absent (N=635)	Present (N=37)
<b>Current work ability (score)</b>						
Mean (SD)	8.8 (1.6)	6.8 (2.5)	8.8 (1.6)	6.8 (2.7)	8.8 (1.6)	6.9 (2.7)
Median (IQR)	9.0 (8.0 to 10.0)	8.0 (6.0 to 8.5)	9.0 (8.0 to 10.0)	8.0 (6.0 to 9.0)	9.0 (8.0 to 10.0)	8.0 (6.0 to 9.0)
Range	0 to 10	0 to 10	0 to 10	0 to 10	0 to 10	0 to 10
Missing	15 (2.4%)	1 (1.9%)	15 (2.3%)	1 (3.3%)	16 (2.5%)	0 (0%)
<b>Current work ability (categorical)</b>						
Poor (score ≤6)	31 (5.1%)	16 (31.4%)	37 (5.9%)	10 (34.5%)	37 (6.0%)	10 (27.0%)
Moderate (score 7-8)	157 (26.0%)	22 (43.1%)	169 (27.0%)	10 (34.5%)	163 (26.3%)	16 (43.2%)
Excellent (score ≥9)	417 (68.9%)	13 (25.5%)	421 (67.1%)	9 (31.0%)	419 (67.7%)	11 (29.7%)
Missing	15 (2.4%)	1 (1.9%)	15 (2.3%)	1 (3.3%)	16 (2.5%)	0 (0%)
<b>Work ability related to physical demands</b>						
Very bad	3 (0.5%)	2 (4.0%)	3 (0.5%)	2 (6.9%)	4 (0.6%)	1 (2.8%)
Rather bad	7 (1.2%)	4 (8.0%)	10 (1.6%)	1 (3.4%)	8 (1.3%)	3 (8.3%)
Moderate	28 (4.6%)	17 (34.0%)	34 (5.4%)	11 (37.9%)	37 (6.0%)	8 (22.2%)
Rather good	138 (22.8%)	16 (32.0%)	145 (23.2%)	9 (31.0%)	142 (22.9%)	12 (33.3%)
Very good	429 (70.9%)	11 (22.0%)	434 (69.3%)	6 (20.7%)	428 (69.1%)	12 (33.3%)
Missing	15 (2.4%)	2 (3.8%)	16 (2.5%)	1 (3.3%)	16 (2.5%)	1 (2.7%)
<b>Work ability related to mental demands</b>						
Very bad	3 (0.5%)	1 (2.0%)	2 (0.3%)	2 (6.9%)	3 (0.5%)	1 (2.8%)
Rather bad	4 (0.7%)	3 (6.0%)	4 (0.6%)	3 (10.3%)	4 (0.6%)	3 (8.3%)
Moderate	55 (9.1%)	17 (34.0%)	65 (10.4%)	7 (24.1%)	62 (10.0%)	10 (27.8%)
Rather good	198 (32.8%)	18 (36.0%)	205 (32.9%)	11 (37.9%)	202 (32.7%)	14 (38.9%)

Very good	343 (56.9%)	11 (22.0%)	348 (55.8%)	6 (20.7%)	346 (56.1%)	8 (22.2%)
<i>Missing</i>	<i>17 (2.7%)</i>	<i>2 (3.8%)</i>	<i>18 (2.8%)</i>	<i>1 (3.3%)</i>	<i>18 (2.8%)</i>	<i>1 (2.7%)</i>
<b>Estimated work ability in future (2 years)</b>						
Unlikely	14 (2.3%)	4 (8.0%)	15 (2.4%)	3 (10.7%)	15 (2.4%)	3 (8.3%)
Not certain	29 (4.8%)	8 (16.0%)	33 (5.3%)	4 (14.3%)	32 (5.2%)	5 (13.9%)
Relatively certain	561 (92.9%)	38 (76.0%)	578 (92.3%)	21 (75.0%)	571 (92.4%)	28 (77.8%)
<i>Missing</i>	<i>16 (2.6%)</i>	<i>2 (3.8%)</i>	<i>16 (2.5%)</i>	<i>2 (6.7%)</i>	<i>17 (2.7%)</i>	<i>1 (2.7%)</i>

---

Legend: IQR, interquartile range; PCC, post COVID-19 condition; SD, standard deviation.



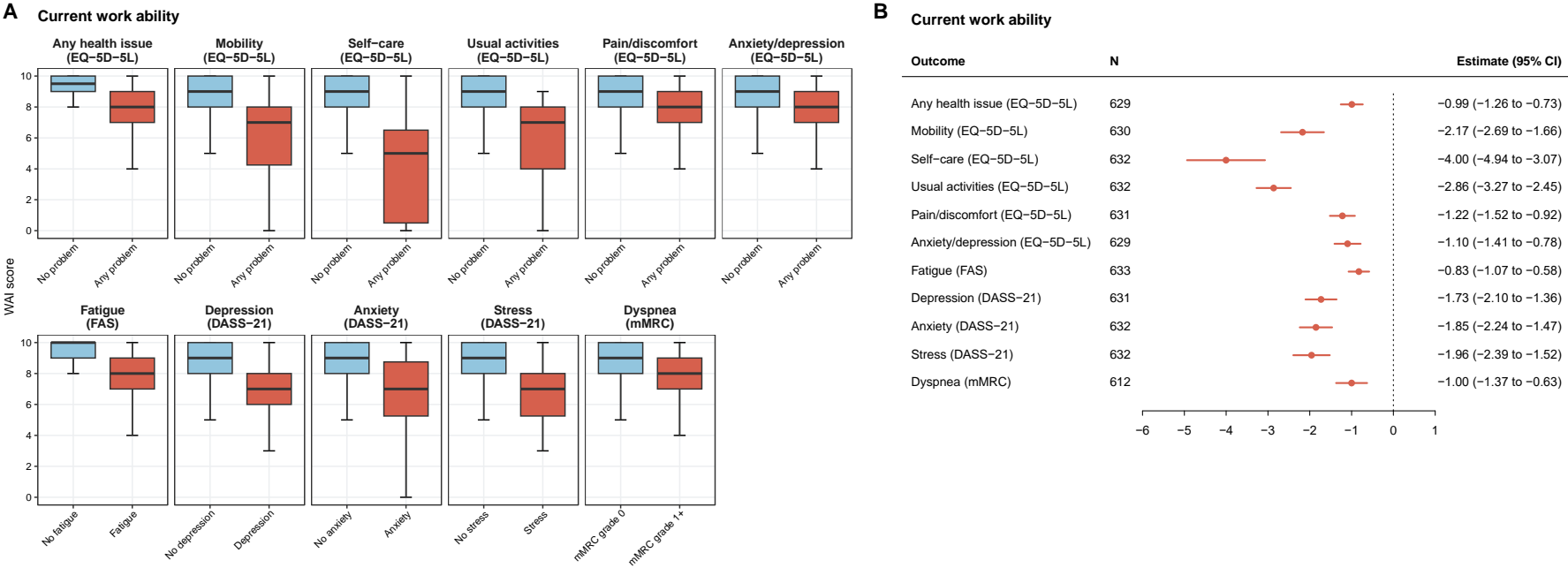
85 **Supplementary Table S5: Results from multivariable regression analyses for work ability outcomes, based on the presence of symptom clusters or specific**  
86 **individual symptoms reported to be related to COVID-19 by participants at 12 months.**

Symptom	Current work ability		Physical demands		Mental demands		Future (2 years)	
	Estimate (95% CI)	p-value	OR (95% CI)	p-value	OR (95% CI)	p-value	OR (95% CI)	p-value
<b>Symptom clusters</b>								
Fatigue/Physical Exertion	-1.52 (-1.99 to -1.06)	<0.001	0.15 (0.08 to 0.28)	<0.001	0.21 (0.11 to 0.40)	<0.001	0.45 (0.18 to 1.10)	0.079
Cardiorespiratory	-1.54 (-2.12 to -0.96)	<0.001	0.17 (0.08 to 0.36)	<0.001	0.22 (0.10 to 0.46)	<0.001	0.34 (0.12 to 0.92)	0.033
Neurocognitive	-1.43 (-1.95 to -0.91)	<0.001	0.26 (0.13 to 0.50)	<0.001	0.23 (0.11 to 0.45)	<0.001	0.43 (0.16 to 1.13)	0.087
<b>All symptoms</b>								
Fatigue	-1.75 (-2.28 to -1.22)	<0.001	0.13 (0.07 to 0.26)	<0.001	0.16 (0.08 to 0.33)	<0.001	0.41 (0.15 to 1.10)	0.076
Physical exertion	-1.87 (-2.42 to -1.32)	<0.001	0.13 (0.07 to 0.27)	<0.001	0.20 (0.09 to 0.42)	<0.001	0.52 (0.18 to 1.50)	0.227
Dyspnea	-1.69 (-2.33 to -1.05)	<0.001	0.17 (0.07 to 0.38)	<0.001	0.22 (0.09 to 0.51)	<0.001	0.37 (0.12 to 1.09)	0.071
Cough	-1.31 (-2.61 to -0.02)	0.047	0.27 (0.06 to 1.15)	0.077	0.51 (0.11 to 2.50)	0.409	1.72 (0.15 to 19.99)	0.665
Palpitations	-1.44 (-2.61 to -0.28)	0.015	0.29 (0.07 to 1.20)	0.087	0.14 (0.03 to 0.63)	0.011	0.10 (0.02 to 0.55)	0.008
Chest pain	-2.14 (-3.49 to -0.79)	0.002	0.06 (0.01 to 0.38)	0.003	0.03 (0.00 to 0.21)	<0.001	0.04 (0.01 to 0.21)	<0.001
Headache	-1.52 (-2.35 to -0.70)	<0.001	0.19 (0.07 to 0.56)	0.003	0.21 (0.06 to 0.67)	0.009	0.12 (0.04 to 0.42)	<0.001
Myalgia	-1.07 (-2.09 to -0.05)	0.040	0.25 (0.08 to 0.83)	0.023	0.10 (0.03 to 0.35)	<0.001	0.81 (0.09 to 7.17)	0.849
Arthralgia	-0.42 (-1.69 to 0.84)	0.509	0.16 (0.04 to 0.69)	0.014	0.18 (0.04 to 0.86)	0.031	0.85 (0.08 to 8.52)	0.889
Concentration difficulties	-1.90 (-2.57 to -1.24)	<0.001	0.20 (0.08 to 0.48)	<0.001	0.24 (0.09 to 0.60)	0.002	0.54 (0.16 to 1.89)	0.336
Memory problems	-1.31 (-1.94 to -0.68)	<0.001	0.37 (0.16 to 0.82)	0.015	0.35 (0.15 to 0.80)	0.013	0.42 (0.13 to 1.34)	0.142
Sleep problems	-1.57 (-2.54 to -0.60)	0.002	0.17 (0.05 to 0.57)	0.004	0.13 (0.04 to 0.44)	<0.001	0.21 (0.04 to 1.03)	0.054
Loss of taste or smell	-0.33 (-0.80 to 0.15)	0.174	0.60 (0.32 to 1.13)	0.117	0.59 (0.32 to 1.08)	0.086	0.45 (0.17 to 1.16)	0.097
Swallowing difficulties	1.25 (-0.90 to 3.39)	0.253	n.e.		n.e.		n.e.	
Tingling	-2.11 (-3.63 to -0.59)	0.007	0.06 (0.01 to 0.60)	0.017	0.05 (0.01 to 0.43)	0.006	0.13 (0.02 to 0.95)	0.045
Trembling	-2.87 (-5.89 to 0.15)	0.063	0.00 (0.00 to 0.00)	<0.001	0.00 (0.00 to 0.00)	<0.001	0.00 (0.00 to 0.00)	<0.001

Hearing problems	-1.62 (-3.16 to -0.09)	0.039	0.18 (0.02 to 1.89)	0.153	0.24 (0.03 to 1.82)	0.168	0.17 (0.02 to 1.72)	0.134
Vertigo	-3.39 (-4.61 to -2.17)	<0.001	0.04 (0.01 to 0.17)	<0.001	0.02 (0.00 to 0.12)	<0.001	0.20 (0.03 to 1.14)	0.070
Vision problems	-2.00 (-4.14 to 0.13)	0.066	0.01 (0.00 to 0.23)	0.003	0.00 (0.00 to 0.04)	<0.001	0.01 (0.00 to 0.14)	<0.001
Gastrointestinal changes	-2.13 (-3.89 to -0.37)	0.018	0.01 (0.00 to 0.16)	<0.001	0.03 (0.00 to 0.42)	0.010	0.07 (0.01 to 0.56)	0.013
Rash	-2.89 (-4.64 to -1.15)	0.001	0.07 (0.01 to 0.48)	0.007	0.07 (0.01 to 0.54)	0.011	0.14 (0.02 to 1.03)	0.053
Hair loss	-0.34 (-1.71 to 1.03)	0.629	0.25 (0.05 to 1.16)	0.076	0.32 (0.07 to 1.50)	0.148	0.08 (0.01 to 0.54)	0.010

Legend: CI, confidence interval; n.e., not estimable; OR, odds ratio. Models are multivariable linear regression models (current work ability) or multivariable ordinal logistic regression models (physical demands, mental demands, future (2 years)) adjusted for age, sex, education status, baseline EuroQol visual analog scale (EQ-VAS), comorbidity count, history of psychiatric diagnosis, and hospitalization due to COVID-19. Reference levels are absence of the respective symptom (cluster).

92 **Supplementary Figure S4: Current work ability stratified by presence of health problems on any of the standardized health assessments (EQ-5D-5L overall**  
93 **and sub-domains, Fatigue Assessment Scale (FAS), 21-item Depression, Anxiety and Stress scale (DASS-21), modified Medical Research Council (mMRC)**  
94 **dyspnea scale) at 12 months.** Results from descriptive analyses (panel A) and multivariable linear regression analyses (panel B) are presented. Regression models were  
95 adjusted for sex, age, education level, baseline EuroQol visual analog scale (EQ-VAS), comorbidity count, history of psychiatric diagnosis, and hospitalization at acute  
96 infection. Separate models were estimated for each individual outcome. Legend: CI, confidence interval.



97

98

99 **Supplementary Table S6: Work ability outcomes, stratified by presence of problems on the EQ-5D-5L (overall and subdomains).**

	Any health issue (EQ-5D-5L)		Mobility (EQ-5D-5L)		Self-care (EQ-5D-5L)		Usual activities (EQ-5D-5L)		Pain or discomfort (EQ-5D-5L)		Anxiety or depression (EQ-5D-5L)	
	No problem (N=431 )	Any problem (N=22 )	No problem (N=611 )	Any problem (N=43 )	No problem (N=645 )	Any problem (N=11 )	No problem (N=595 )	Any problem (N=61 )	No problem (N=518 )	Any problem (N=13 )	No problem (N=519 )	Any problem (N=13 )
<b>Current work ability (score)</b>												
Mean (SD)	9.2 (1.2)	7.8 (2.1)	8.9 (1.4)	6.1 (2.8)	8.8 (1.5)	4.2 (3.5)	9.0 (1.2)	5.8 (2.7)	9.0 (1.3)	7.5 (2.4)	9.0 (1.3)	7.5 (2.3)
Median (IQR)	9.5 (9.0 to 10.0)	8.0 (7.0 to 9.0)	9.0 (8.0 to 10.0)	7.0 (4.2 to 8.0)	9.0 (8.0 to 10.0)	5.0 (0.5 to 6.5)	9.0 (8.0 to 10.0)	7.0 (4.0 to 8.0)	9.0 (8.0 to 10.0)	8.0 (7.0 to 9.0)	9.0 (8.0 to 10.0)	8.0 (7.0 to 9.0)
Range	0 to 10	0 to 10	0 to 10	0 to 10	0 to 10	0 to 10	0 to 10	0 to 9	0 to 10	0 to 10	0 to 10	0 to 10
Missing	3 (0.7%)	1 (0.5%)	3 (0.5%)	1 (2.3%)	4 (0.6%)	0 (0%)	4 (0.7%)	0 (0%)	3 (0.6%)	1 (0.7%)	4 (0.8%)	0 (0%)
<b>Current work ability (categorical)</b>												
Poor (score ≤6)	9 (2.1%)	36 (16.3%)	28 (4.6%)	17 (40.5%)	38 (5.9%)	8 (72.7%)	17 (2.9%)	29 (47.5%)	17 (3.3%)	29 (21.3%)	19 (3.7%)	27 (20.1%)
Moderate (score 7-8)	84 (19.6%)	95 (43.0%)	161 (26.5%)	18 (42.9%)	177 (27.6%)	2 (18.2%)	153 (25.9%)	26 (42.6%)	123 (23.9%)	56 (41.2%)	118 (22.9%)	59 (44.0%)
Excellent (score ≥9)	335 (78.3%)	90 (40.7%)	419 (68.9%)	7 (16.7%)	426 (66.5%)	1 (9.1%)	421 (71.2%)	6 (9.8%)	375 (72.8%)	51 (37.5%)	378 (73.4%)	48 (35.8%)
Missing	3 (0.7%)	1 (0.5%)	3 (0.5%)	1 (2.3%)	4 (0.6%)	0 (0%)	4 (0.7%)	0 (0%)	3 (0.6%)	1 (0.7%)	4 (0.8%)	0 (0%)
<b>Work ability related to physical demands</b>												

Very bad	0 (0.0%)	5 (2.3%)	2 (0.3%)	3 (7.1%)	2 (0.3%)	3 (27.3%)	1 (0.2%)	4 (6.7%)	0 (0.0%)	5 (3.7%)	0 (0.0%)	5 (3.8%)
Rather bad	2 (0.5%)	8 (3.6%)	4 (0.7%)	6 (14.3%)	7 (1.1%)	3 (27.3%)	2 (0.3%)	8 (13.3%)	3 (0.6%)	7 (5.2%)	5 (1.0%)	5 (3.8%)
Moderate	7 (1.6%)	38 (17.3%)	35 (5.8%)	10 (23.8%)	44 (6.9%)	1 (9.1%)	25 (4.2%)	20 (33.3%)	14 (2.7%)	31 (23.0%)	20 (3.9%)	25 (18.8%)
Rather good	75 (17.5%)	78 (35.5%)	135 (22.2%)	18 (42.9%)	151 (23.6%)	3 (27.3%)	132 (22.3%)	22 (36.7%)	106 (20.6%)	48 (35.6%)	110 (21.4%)	42 (31.6%)
Very good	344 (80.4%)	91 (41.4%)	431 (71.0%)	5 (11.9%)	436 (68.1%)	1 (9.1%)	431 (72.9%)	6 (10.0%)	392 (76.1%)	44 (32.6%)	380 (73.8%)	56 (42.1%)
Missing	3 (0.7%)	2 (0.9%)	4 (0.7%)	1 (2.3%)	5 (0.8%)	0 (0%)	4 (0.7%)	1 (1.6%)	3 (0.6%)	2 (1.5%)	4 (0.8%)	1 (0.7%)
<b>Work ability related to mental demands</b>												
Very bad	0 (0.0%)	4 (1.8%)	3 (0.5%)	1 (2.4%)	3 (0.5%)	1 (9.1%)	1 (0.2%)	3 (5.0%)	1 (0.2%)	3 (2.2%)	0 (0.0%)	4 (3.0%)
Rather bad	0 (0.0%)	6 (2.7%)	4 (0.7%)	2 (4.8%)	5 (0.8%)	1 (9.1%)	2 (0.3%)	4 (6.7%)	2 (0.4%)	4 (3.0%)	0 (0.0%)	6 (4.5%)
Moderate	21 (4.9%)	51 (23.2%)	55 (9.1%)	17 (40.5%)	70 (11.0%)	2 (18.2%)	43 (7.3%)	29 (48.3%)	42 (8.2%)	30 (22.2%)	28 (5.5%)	43 (32.3%)
Rather good	111 (26.1%)	103 (46.8%)	202 (33.4%)	12 (28.6%)	209 (32.8%)	6 (54.5%)	200 (34.0%)	15 (25.0%)	157 (30.6%)	58 (43.0%)	150 (29.2%)	65 (48.9%)
Very good	294 (69.0%)	56 (25.5%)	341 (56.4%)	10 (23.8%)	351 (55.0%)	1 (9.1%)	343 (58.2%)	9 (15.0%)	311 (60.6%)	40 (29.6%)	335 (65.3%)	15 (11.3%)
Missing	5 (1.2%)	2 (0.9%)	6 (1.0%)	1 (2.3%)	7 (1.1%)	0 (0%)	6 (1.0%)	1 (1.6%)	5 (1.0%)	2 (1.5%)	6 (1.2%)	1 (0.7%)

**Estimated work  
ability in future (2  
years)**

Unlikely	8 (1.9%)	10 (4.6%)	15 (2.5%)	3 (7.1%)	16 (2.5%)	2 (18.2%)	12 (2.0%)	6 (10.0%)	9 (1.7%)	9 (6.7%)	12 (2.3%)	6 (4.5%)
Not certain	13 (3.0%)	23 (10.5%)	26 (4.3%)	10 (23.8%)	33 (5.2%)	3 (27.3%)	22 (3.7%)	14 (23.3%)	19 (3.7%)	17 (12.7%)	21 (4.1%)	15 (11.4%)
Relatively certain	407 (95.1%)	186 (84.9%)	565 (93.2%)	29 (69.0%)	590 (92.3%)	6 (54.5%)	556 (94.2%)	40 (66.7%)	487 (94.6%)	108 (80.6%)	482 (93.6%)	111 (84.1%)
<i>Missing</i>	3 (0.7%)	3 (1.4%)	5 (0.8%)	1 (2.3%)	6 (0.9%)	0 (0%)	5 (0.8%)	1 (1.6%)	3 (0.6%)	3 (2.2%)	4 (0.8%)	2 (1.5%)

Legend: IQR, interquartile range; EQ-5D-5L, EuroQol 5-dimension 5-level scale; SD, standard deviation.

103 **Supplementary Table S7: Work ability outcomes, stratified by presence of problems on any of the standardized health assessments (FAS, DASS-21, mMRC**  
104 **dyspnea scale).**

	<b>Fatigue (FAS)</b>		<b>Depression (DASS-21)</b>		<b>Anxiety (DASS-21)</b>		<b>Stress (DASS-21)</b>		<b>Dyspnea (mMRC)</b>	
	<b>No fatigue (N=406)</b>	<b>Fatigue (N=252)</b>	<b>No depressi on (N=577)</b>	<b>Depress ion (N=78)</b>	<b>No anxiety (N=586)</b>	<b>Anxiety (N=70)</b>	<b>No stress (N=602)</b>	<b>Stress (N=54)</b>	<b>mMRC grade 0 (N=541)</b>	<b>mMRC grade ≥1 (N=93)</b>
<b>Current work ability (score)</b>										
Mean (SD)	9.1 (1.4)	8.0 (2.0)	9.0 (1.4)	6.7 (2.5)	8.9 (1.4)	6.7 (2.7)	8.9 (1.5)	6.5 (2.3)	8.9 (1.5)	7.3 (2.4)
Median (IQR)	10.0 (9.0 to 10.0)	8.0 (7.0 to 9.0)	9.0 (8.0 to 10.0)	7.0 (6.0 to 8.0)	9.0 (8.0 to 10.0)	7.0 (5.2 to 8.8)	9.0 (8.0 to 10.0)	7.0 (5.2 to 8.0)	9.0 (8.0 to 10.0)	8.0 (7.0 to 9.0)
Range	0 to 10	0 to 10	0 to 10	0 to 10	0 to 10	0 to 10	0 to 10	0 to 10	0 to 10	0 to 10
Missing	4 (1.0%)	0 (0%)	3 (0.5%)	0 (0%)	3 (0.5%)	0 (0%)	3 (0.5%)	0 (0%)	2 (0.4%)	1 (1.1%)
<b>Current work ability (categorical)</b>										
Poor (score ≤6)	13 (3.2%)	34 (13.5%)	23 (4.0%)	24 (30.8%)	25 (4.3%)	22 (31.4%)	26 (4.3%)	21 (38.9%)	24 (4.5%)	22 (23.9%)
Moderate (score 7-8)	78 (19.4%)	101 (40.1%)	140 (24.4%)	36 (46.2%)	148 (25.4%)	30 (42.9%)	153 (25.5%)	24 (44.4%)	138 (25.6%)	37 (40.2%)
Excellent (score ≥9)	311 (77.4%)	117 (46.4%)	411 (71.6%)	18 (23.1%)	410 (70.3%)	18 (25.7%)	420 (70.1%)	9 (16.7%)	377 (69.9%)	33 (35.9%)
Missing	4 (1.0%)	0 (0%)	3 (0.5%)	0 (0%)	3 (0.5%)	0 (0%)	3 (0.5%)	0 (0%)	2 (0.4%)	1 (1.1%)
<b>Work ability related to physical demands</b>										
Very bad	1 (0.2%)	4 (1.6%)	1 (0.2%)	4 (5.2%)	1 (0.2%)	4 (5.7%)	3 (0.5%)	2 (3.8%)	1 (0.2%)	4 (4.3%)
Rather bad	5 (1.2%)	6 (2.4%)	6 (1.0%)	5 (6.5%)	6 (1.0%)	5 (7.1%)	5 (0.8%)	6 (11.3%)	4 (0.7%)	7 (7.6%)
Moderate	10 (2.5%)	35 (14.1%)	29 (5.1%)	16 (20.8%)	30 (5.2%)	15 (21.4%)	32 (5.3%)	13 (24.5%)	21 (3.9%)	23 (25.0%)

Rather good	77 (19.1%)	77 (30.9%)	122 (21.3%)	30 (39.0%)	125 (21.5%)	27 (38.6%)	133 (22.2%)	20 (37.7%)	116 (21.6%)	31 (33.7%)
Very good	311 (77.0%)	127 (51.0%)	416 (72.5%)	22 (28.6%)	420 (72.2%)	19 (27.1%)	426 (71.1%)	12 (22.6%)	396 (73.6%)	27 (29.3%)
Missing	2 (0.5%)	3 (1.2%)	3 (0.5%)	1 (1.3%)	4 (0.7%)	0 (0%)	3 (0.5%)	1 (1.9%)	3 (0.6%)	1 (1.1%)
<b>Work ability related to mental demands</b>										
Very bad	0 (0.0%)	4 (1.6%)	0 (0.0%)	4 (5.2%)	0 (0.0%)	4 (5.7%)	2 (0.3%)	2 (3.8%)	1 (0.2%)	3 (3.3%)
Rather bad	1 (0.2%)	6 (2.4%)	2 (0.3%)	5 (6.5%)	3 (0.5%)	4 (5.7%)	1 (0.2%)	6 (11.3%)	3 (0.6%)	4 (4.3%)
Moderate	16 (4.0%)	56 (22.6%)	38 (6.6%)	34 (44.2%)	43 (7.4%)	29 (41.4%)	46 (7.7%)	26 (49.1%)	47 (8.8%)	23 (25.0%)
Rather good	103 (25.6%)	113 (45.6%)	186 (32.5%)	28 (36.4%)	188 (32.4%)	26 (37.1%)	199 (33.3%)	16 (30.2%)	169 (31.5%)	38 (41.3%)
Very good	283 (70.2%)	69 (27.8%)	346 (60.5%)	6 (7.8%)	346 (59.7%)	7 (10.0%)	349 (58.5%)	3 (5.7%)	316 (59.0%)	24 (26.1%)
Missing	3 (0.7%)	4 (1.6%)	5 (0.9%)	1 (1.3%)	6 (1.0%)	0 (0%)	5 (0.8%)	1 (1.9%)	5 (0.9%)	1 (1.1%)
<b>Estimated work ability in future (2 years)</b>										
Unlikely	8 (2.0%)	10 (4.0%)	11 (1.9%)	7 (9.0%)	12 (2.1%)	6 (8.7%)	9 (1.5%)	9 (17.0%)	10 (1.9%)	5 (5.5%)
Not certain	12 (3.0%)	25 (10.0%)	23 (4.0%)	13 (16.7%)	25 (4.3%)	11 (15.9%)	27 (4.5%)	9 (17.0%)	24 (4.5%)	12 (13.2%)
Relatively certain	382 (95.0%)	215 (86.0%)	538 (94.1%)	58 (74.4%)	545 (93.6%)	52 (75.4%)	562 (94.0%)	35 (66.0%)	504 (93.7%)	74 (81.3%)
Missing	4 (1.0%)	2 (0.8%)	5 (0.9%)	0 (0%)	4 (0.7%)	1 (1.4%)	4 (0.7%)	1 (1.9%)	3 (0.6%)	2 (2.2%)

Legend: IQR, interquartile range; DASS-21, 21-item Depression, Anxiety and Stress Scale; FAS, Fatigue Assessment Scale; mMRC, modified Medical Research Council

scale; SD, standard deviation.



109 **Supplementary Table S8: Results from multivariable regression analyses for work ability outcomes, based on the presence of problems in standardized health**  
110 **assessments (EQ-5D-5L, FAS, DASS-21, mMRC dyspnea scale).**

Outcome	Current work ability		Physical demands		Mental demands		Future (2 years)	
	Estimate (95% CI)	p-value	OR (95% CI)	p-value	OR (95% CI)	p-value	OR (95% CI)	p-value
Any health issue (EQ-5D-5L)	-0.99 (-1.26 to -0.73)	<0.001	0.19 (0.13 to 0.28)	<0.001	0.19 (0.13 to 0.27)	<0.001	0.36 (0.18 to 0.71)	0.003
Mobility (EQ-5D-5L)	-2.17 (-2.69 to -1.66)	<0.001	0.11 (0.06 to 0.21)	<0.001	0.25 (0.13 to 0.51)	<0.001	0.31 (0.12 to 0.82)	0.018
Self-care (EQ-5D-5L)	-4.00 (-4.94 to -3.07)	<0.001	0.03 (0.01 to 0.12)	<0.001	0.16 (0.05 to 0.52)	0.003	0.11 (0.03 to 0.46)	0.002
Usual activities (EQ-5D-5L)	-2.86 (-3.27 to -2.45)	<0.001	0.06 (0.03 to 0.11)	<0.001	0.10 (0.05 to 0.20)	<0.001	0.17 (0.07 to 0.38)	<0.001
Pain/discomfort (EQ-5D-5L)	-1.22 (-1.52 to -0.92)	<0.001	0.16 (0.11 to 0.25)	<0.001	0.29 (0.19 to 0.43)	<0.001	0.27 (0.13 to 0.52)	<0.001
Anxiety/depression (EQ-5D-5L)	-1.10 (-1.41 to -0.78)	<0.001	0.25 (0.17 to 0.39)	<0.001	0.10 (0.07 to 0.16)	<0.001	0.43 (0.21 to 0.89)	0.023
Fatigue (FAS)	-0.83 (-1.07 to -0.58)	<0.001	0.31 (0.22 to 0.44)	<0.001	0.18 (0.13 to 0.26)	<0.001	0.39 (0.20 to 0.76)	0.005
Depression (DASS-21)	-1.73 (-2.10 to -1.36)	<0.001	0.16 (0.10 to 0.27)	<0.001	0.07 (0.04 to 0.13)	<0.001	0.17 (0.08 to 0.36)	<0.001
Anxiety (DASS-21)	-1.85 (-2.24 to -1.47)	<0.001	0.15 (0.09 to 0.25)	<0.001	0.10 (0.06 to 0.17)	<0.001	0.19 (0.09 to 0.41)	<0.001
Stress (DASS-21)	-1.96 (-2.39 to -1.52)	<0.001	0.13 (0.07 to 0.23)	<0.001	0.06 (0.03 to 0.11)	<0.001	0.12 (0.05 to 0.27)	<0.001
Dyspnea (mMRC)	-1.00 (-1.37 to -0.63)	<0.001	0.20 (0.12 to 0.32)	<0.001	0.29 (0.18 to 0.47)	<0.001	0.61 (0.27 to 1.36)	0.224

111 Legend: CI, confidence interval; DASS-21, 21-item Depression, Anxiety and Stress Scale; EQ-5D-5L, EuroQol 5-dimension 5-level scale; FAS, Fatigue Assessment  
112 Scale; mMRC, modified Medical Research Council scale; OR, odds ratio. Models are multivariable linear regression models (current work ability) or multivariable  
113 ordinal logistic regression models (work ability related to physical and mental demands, estimated future work ability in 2 years) adjusted for age, sex, education status,  
114 baseline EuroQol visual analog scale (EQ-VAS), comorbidity count, history of psychiatric diagnosis, and hospitalization due to COVID-19. Reference levels are absence  
115 of the respective outcome (based on respective scale).

116

117

118 **Supplementary Table S9: Work ability outcomes, stratified by sex and presence of COVID-19 related symptoms (post COVID-19 condition) at 12 months.**

	Female		Male	
	No PCC (N=285)	PCC (N=79)	No PCC (N=267)	PCC (N=41)
<b>Current work ability (score)</b>				
Mean (SD)	8.8 (1.6)	7.6 (2.5)	8.9 (1.5)	8.3 (1.5)
Median (IQR)	9.0 (8.0 to 10.0)	8.0 (7.0 to 9.0)	9.0 (8.0 to 10.0)	9.0 (7.0 to 9.0)
Range	0 to 10	0 to 10	0 to 10	3 to 10
Missing	6 (2.1%)	1 (1.3%)	9 (3.4%)	0 (0%)
<b>Current work ability (categorical)</b>				
Poor (score $\leq 6$ )	17 (6.1%)	17 (21.8%)	10 (3.9%)	3 (7.3%)
Moderate (score 7-8)	78 (28.0%)	26 (33.3%)	59 (22.9%)	16 (39.0%)
Excellent (score $\geq 9$ )	184 (65.9%)	35 (44.9%)	189 (73.3%)	22 (53.7%)
Missing	6 (2.1%)	1 (1.3%)	9 (3.4%)	0 (0%)
<b>Work ability related to physical demands</b>				
Very bad	0 (0.0%)	3 (3.9%)	2 (0.8%)	0 (0.0%)
Rather bad	3 (1.1%)	4 (5.2%)	3 (1.2%)	1 (2.4%)
Moderate	16 (5.7%)	15 (19.5%)	5 (1.9%)	9 (22.0%)
Rather good	74 (26.4%)	25 (32.5%)	41 (16.0%)	14 (34.1%)
Very good	187 (66.8%)	30 (39.0%)	206 (80.2%)	17 (41.5%)
Missing	5 (1.8%)	2 (2.5%)	10 (3.7%)	0 (0%)
<b>Work ability related to mental demands</b>				
Very bad	1 (0.4%)	2 (2.6%)	1 (0.4%)	0 (0.0%)
Rather bad	2 (0.7%)	5 (6.5%)	0 (0.0%)	0 (0.0%)
Moderate	32 (11.4%)	17 (22.1%)	17 (6.7%)	6 (14.6%)
Rather good	96 (34.3%)	27 (35.1%)	74 (29.0%)	19 (46.3%)

Very good	149 (53.2%)	26 (33.8%)	163 (63.9%)	16 (39.0%)
<i>Missing</i>	<i>5 (1.8%)</i>	<i>2 (2.5%)</i>	<i>12 (4.5%)</i>	<i>0 (0%)</i>
<b>Estimated work ability in future (2 years)</b>				
Unlikely	9 (3.2%)	6 (7.9%)	3 (1.2%)	0 (0.0%)
Not certain	15 (5.4%)	8 (10.5%)	9 (3.5%)	5 (12.2%)
Relatively certain	256 (91.4%)	62 (81.6%)	245 (95.3%)	36 (87.8%)
<i>Missing</i>	<i>5 (1.8%)</i>	<i>3 (3.8%)</i>	<i>10 (3.7%)</i>	<i>0 (0%)</i>

---

Legend: IQR, interquartile range; PCC, post COVID-19 condition; SD, standard deviation.

122 **Supplementary Table S10: Work ability outcomes, stratified by age group and post COVID-19 condition (defined as presence of COVID-19 related symptoms)**  
123 **at 12 months.**

	18-39 years		40-64 years	
	No PCC (N=249)	PCC (N=33)	No PCC (N=303)	PCC (N=87)
<b>Current work ability (score)</b>				
Mean (SD)	8.8 (1.5)	8.1 (1.9)	8.9 (1.6)	7.8 (2.3)
Median (IQR)	9.0 (8.0 to 10.0)	9.0 (7.0 to 9.0)	9.0 (8.0 to 10.0)	8.0 (7.0 to 9.0)
Range	0 to 10	1 to 10	0 to 10	0 to 10
Missing	5 (2.0%)	0 (0%)	10 (3.3%)	1 (1.1%)
<b>Current work ability (categorical)</b>				
Poor (score $\leq 6$ )	14 (5.7%)	4 (12.1%)	13 (4.4%)	16 (18.6%)
Moderate (score 7-8)	73 (29.9%)	12 (36.4%)	64 (21.8%)	30 (34.9%)
Excellent (score $\geq 9$ )	157 (64.3%)	17 (51.5%)	216 (73.7%)	40 (46.5%)
Missing	5 (2.0%)	0 (0%)	10 (3.3%)	1 (1.1%)
<b>Work ability related to physical demands</b>				
Very bad	0 (0.0%)	0 (0.0%)	2 (0.7%)	3 (3.5%)
Rather bad	2 (0.8%)	3 (9.1%)	4 (1.4%)	2 (2.4%)
Moderate	8 (3.3%)	3 (9.1%)	13 (4.4%)	21 (24.7%)
Rather good	58 (23.8%)	8 (24.2%)	57 (19.5%)	31 (36.5%)
Very good	176 (72.1%)	19 (57.6%)	217 (74.1%)	28 (32.9%)
Missing	5 (2.0%)	0 (0%)	10 (3.3%)	2 (2.3%)
<b>Work ability related to mental demands</b>				
Very bad	1 (0.4%)	0 (0.0%)	1 (0.3%)	2 (2.4%)
Rather bad	1 (0.4%)	3 (9.1%)	1 (0.3%)	2 (2.4%)

Moderate	27 (11.1%)	4 (12.1%)	22 (7.6%)	19 (22.4%)
Rather good	90 (36.9%)	15 (45.5%)	80 (27.5%)	31 (36.5%)
Very good	125 (51.2%)	11 (33.3%)	187 (64.3%)	31 (36.5%)
<i>Missing</i>	5 (2.0%)	0 (0%)	12 (4.0%)	2 (2.3%)
<b>Estimated work ability in future (2 years)</b>				
Unlikely	6 (2.5%)	0 (0.0%)	6 (2.0%)	6 (7.1%)
Not certain	11 (4.5%)	4 (12.1%)	13 (4.4%)	9 (10.7%)
Relatively certain	227 (93.0%)	29 (87.9%)	274 (93.5%)	69 (82.1%)
<i>Missing</i>	5 (2.0%)	0 (0%)	10 (3.3%)	3 (3.4%)

---

Legend: IQR, interquartile range; PCC, post COVID-19 condition; SD, standard deviation.

127 **Supplementary Table S11: Work ability outcomes, stratified by comorbidity count and post COVID-19 condition (defined as presence of COVID-19 related**  
128 **symptoms) at 12 months.**

	0-1 comorbidity*		≥2 comorbidities*	
	No PCC (N=533)	PCC (N=112)	No PCC (N=19)	PCC (N=8)
<b>Current work ability (score)</b>				
Mean (SD)	8.9 (1.4)	8.0 (2.0)	7.4 (3.1)	5.8 (3.3)
Median (IQR)	9.0 (8.0 to 10.0)	8.0 (7.0 to 9.0)	9.0 (7.0 to 9.0)	6.0 (3.8 to 9.0)
Range	0 to 10	0 to 10	0 to 10	0 to 9
Missing	13 (2.4%)	1 (0.9%)	2 (10.5%)	0 (0%)
<b>Current work ability (categorical)</b>				
Poor (score ≤6)	24 (4.6%)	16 (14.4%)	3 (17.6%)	4 (50.0%)
Moderate (score 7-8)	132 (25.4%)	41 (36.9%)	5 (29.4%)	1 (12.5%)
Excellent (score ≥9)	364 (70.0%)	54 (48.6%)	9 (52.9%)	3 (37.5%)
Missing	13 (2.4%)	1 (0.9%)	2 (10.5%)	0 (0%)
<b>Work ability related to physical demands</b>				
Very bad	1 (0.2%)	1 (0.9%)	1 (5.9%)	2 (25.0%)
Rather bad	4 (0.8%)	3 (2.7%)	2 (11.8%)	2 (25.0%)
Moderate	20 (3.8%)	22 (20.0%)	1 (5.9%)	2 (25.0%)
Rather good	111 (21.3%)	39 (35.5%)	4 (23.5%)	0 (0.0%)
Very good	384 (73.8%)	45 (40.9%)	9 (52.9%)	2 (25.0%)
Missing	13 (2.4%)	2 (1.8%)	2 (10.5%)	0 (0%)
<b>Work ability related to mental demands</b>				
Very bad	2 (0.4%)	1 (0.9%)	0 (0.0%)	1 (12.5%)
Rather bad	2 (0.4%)	5 (4.5%)	0 (0.0%)	0 (0.0%)

Moderate	45 (8.7%)	21 (19.1%)	4 (23.5%)	2 (25.0%)
Rather good	163 (31.5%)	44 (40.0%)	7 (41.2%)	2 (25.0%)
Very good	306 (59.1%)	39 (35.5%)	6 (35.3%)	3 (37.5%)
<i>Missing</i>	<i>15 (2.8%)</i>	<i>2 (1.8%)</i>	<i>2 (10.5%)</i>	<i>0 (0%)</i>
<b>Estimated work ability in future (2 years)</b>				
Unlikely	12 (2.3%)	4 (3.7%)	0 (0.0%)	2 (25.0%)
Not certain	20 (3.8%)	12 (11.0%)	4 (23.5%)	1 (12.5%)
Relatively certain	488 (93.8%)	93 (85.3%)	13 (76.5%)	5 (62.5%)
<i>Missing</i>	<i>13 (2.4%)</i>	<i>3 (2.7%)</i>	<i>2 (10.5%)</i>	<i>0 (0%)</i>

---

Legend: IQR, interquartile range; PCC, post COVID-19 condition; SD, standard deviation. \* Comorbidities were assessed as any of the following: hypertension, diabetes, cardiovascular disease, chronic respiratory disease, chronic kidney disease, past or present malignancy, or immune suppression.

134 **Supplementary Table S12: Work ability outcomes, stratified by history of psychiatric diagnosis and post COVID-19 condition (defined as presence of COVID-**  
135 **19 related symptoms) at 12 months.**

	No history of psychiatric diagnosis		History of psychiatric diagnosis	
	No PCC (N=472)	PCC (N=93)	No PCC (N=61)	PCC (N=25)
<b>Current work ability (score)</b>				
Mean (SD)	9.0 (1.4)	8.4 (1.6)	8.2 (2.1)	6.2 (3.2)
Median (IQR)	9.0 (8.0 to 10.0)	9.0 (8.0 to 10.0)	9.0 (8.0 to 10.0)	8.0 (4.0 to 8.0)
Range	0 to 10	3 to 10	0 to 10	0 to 10
<i>Missing</i>	4 (0.8%)	1 (1.1%)	0 (0%)	0 (0%)
<b>Current work ability (categorical)</b>				
Poor (score ≤6)	18 (3.8%)	10 (10.9%)	7 (11.5%)	9 (36.0%)
Moderate (score 7-8)	114 (24.4%)	31 (33.7%)	21 (34.4%)	10 (40.0%)
Excellent (score ≥9)	336 (71.8%)	51 (55.4%)	33 (54.1%)	6 (24.0%)
<i>Missing</i>	4 (0.8%)	1 (1.1%)	0 (0%)	0 (0%)
<b>Work ability related to physical demands</b>				
Very bad	0 (0.0%)	1 (1.1%)	2 (3.3%)	2 (8.3%)
Rather bad	4 (0.9%)	2 (2.2%)	1 (1.6%)	2 (8.3%)
Moderate	14 (3.0%)	21 (22.8%)	6 (9.8%)	3 (12.5%)
Rather good	101 (21.6%)	31 (33.7%)	12 (19.7%)	7 (29.2%)
Very good	349 (74.6%)	37 (40.2%)	40 (65.6%)	10 (41.7%)
<i>Missing</i>	4 (0.8%)	1 (1.1%)	0 (0%)	1 (4.0%)
<b>Work ability related to mental demands</b>				
Very bad	1 (0.2%)	1 (1.1%)	1 (1.6%)	1 (4.2%)
Rather bad	1 (0.2%)	2 (2.2%)	0 (0.0%)	3 (12.5%)



Moderate	32 (6.9%)	16 (17.4%)	15 (24.6%)	7 (29.2%)
Rather good	140 (30.0%)	39 (42.4%)	28 (45.9%)	6 (25.0%)
Very good	292 (62.7%)	34 (37.0%)	17 (27.9%)	7 (29.2%)
<i>Missing</i>	<i>6 (1.3%)</i>	<i>1 (1.1%)</i>	<i>0 (0%)</i>	<i>1 (4.0%)</i>
<b>Estimated work ability in future (2 years)</b>				
Unlikely	9 (1.9%)	4 (4.3%)	3 (4.9%)	2 (8.3%)
Not certain	17 (3.6%)	9 (9.8%)	4 (6.6%)	3 (12.5%)
Relatively certain	442 (94.4%)	79 (85.9%)	54 (88.5%)	19 (79.2%)
<i>Missing</i>	<i>4 (0.8%)</i>	<i>1 (1.1%)</i>	<i>0 (0%)</i>	<i>1 (4.0%)</i>

---

Legend: IQR, interquartile range; PCC, post COVID-19 condition; SD, standard deviation.

139 **Supplementary Table S13: Work ability outcomes, stratified by history of psychiatric diagnosis as well as new or worsened psychiatric diagnoses during follow-**  
140 **up and post COVID-19 condition (defined as presence of COVID-19 related symptoms) at 12 months.**

	No history and no new psychiatric diagnosis		No history with new psychiatric diagnosis		History with no worsened or new psychiatric diagnosis		History with worsened or new psychiatric diagnosis	
	No PCC	PCC	No PCC	PCC	No PCC	PCC	No PCC	PCC
	(N=463)	(N=92)	(N=9)	(N=1)	(N=44)	(N=20)	(N=16)	(N=5)
<b>Current work ability (score)</b>								
Mean (SD)	9.0 (1.3)	8.4 (1.6)	8.1 (2.0)	7.0 (NA)	8.2 (2.2)	7.2 (2.4)	8.1 (1.9)	2.4 (3.4)
Median (IQR)	9.0 (8.0 to 10.0)	9.0 (8.0 to 10.0)	8.0 (7.0 to 10.0)	7.0 (7.0 to 7.0)	9.0 (8.0 to 10.0)	8.0 (6.8 to 9.0)	8.0 (7.8 to 9.2)	1.0 (0.0 to 3.0)
Range	0 to 10	3 to 10	4 to 10	7 to 7	0 to 10	1 to 10	3 to 10	0 to 8
Missing	4 (0.9%)	1 (1.1%)	0 (0%)	0 (0%)	0 (0%)	0 (0%)	0 (0%)	0 (0%)
<b>Current work ability (categorical)</b>								
Poor (score ≤6)	17 (3.7%)	10 (11.0%)	1 (11.1%)	0 (0.0%)	5 (11.4%)	5 (25.0%)	2 (12.5%)	4 (80.0%)
Moderate (score 7-8)	110 (24.0%)	30 (33.0%)	4 (44.4%)	1 (100.0%)	14 (31.8%)	9 (45.0%)	7 (43.8%)	1 (20.0%)
Excellent (score ≥9)	332 (72.3%)	51 (56.0%)	4 (44.4%)	0 (0.0%)	25 (56.8%)	6 (30.0%)	7 (43.8%)	0 (0.0%)
Missing	4 (0.9%)	1 (1.1%)	0 (0%)	0 (0%)	0 (0%)	0 (0%)	0 (0%)	0 (0%)
<b>Work ability related to physical demands</b>								
Very bad	0 (0.0%)	1 (1.1%)	0 (0.0%)	0 (0.0%)	2 (4.5%)	1 (5.0%)	0 (0.0%)	1 (25.0%)
Rather bad	4 (0.9%)	2 (2.2%)	0 (0.0%)	0 (0.0%)	1 (2.3%)	1 (5.0%)	0 (0.0%)	1 (25.0%)
Moderate	13 (2.8%)	20 (22.0%)	1 (11.1%)	1 (100.0%)	1 (2.3%)	3 (15.0%)	5 (31.2%)	0 (0.0%)
Rather good	99 (21.6%)	31 (34.1%)	2 (22.2%)	0 (0.0%)	9 (20.5%)	5 (25.0%)	2 (12.5%)	2 (50.0%)
Very good	343 (74.7%)	37 (40.7%)	6 (66.7%)	0 (0.0%)	31 (70.5%)	10 (50.0%)	9 (56.2%)	0 (0.0%)
Missing	4 (0.9%)	1 (1.1%)	0 (0%)	0 (0%)	0 (0%)	0 (0%)	0 (0%)	1 (20.0%)

**Work ability related to mental demands**

Very bad	0 (0.0%)	1 (1.1%)	1 (11.1%)	0 (0.0%)	0 (0.0%)	0 (0.0%)	1 (6.2%)	1 (25.0%)
Rather bad	1 (0.2%)	2 (2.2%)	0 (0.0%)	0 (0.0%)	0 (0.0%)	1 (5.0%)	0 (0.0%)	2 (50.0%)
Moderate	30 (6.6%)	15 (16.5%)	2 (22.2%)	1 (100.0%)	7 (15.9%)	6 (30.0%)	8 (50.0%)	1 (25.0%)
Rather good	137 (30.0%)	39 (42.9%)	3 (33.3%)	0 (0.0%)	23 (52.3%)	6 (30.0%)	4 (25.0%)	0 (0.0%)
Very good	289 (63.2%)	34 (37.4%)	3 (33.3%)	0 (0.0%)	14 (31.8%)	7 (35.0%)	3 (18.8%)	0 (0.0%)
<i>Missing</i>	<i>6 (1.3%)</i>	<i>1 (1.1%)</i>	<i>0 (0%)</i>	<i>0 (0%)</i>	<i>0 (0%)</i>	<i>0 (0%)</i>	<i>0 (0%)</i>	<i>1 (20.0%)</i>

**Estimated work ability in future (2 years)**

Unlikely	7 (1.5%)	4 (4.4%)	2 (22.2%)	0 (0.0%)	3 (6.8%)	0 (0.0%)	0 (0.0%)	2 (50.0%)
Not certain	17 (3.7%)	9 (9.9%)	0 (0.0%)	0 (0.0%)	3 (6.8%)	2 (10.0%)	1 (6.2%)	1 (25.0%)
Relatively certain	435 (94.8%)	78 (85.7%)	7 (77.8%)	1 (100.0%)	38 (86.4%)	18 (90.0%)	15 (93.8%)	1 (25.0%)
<i>Missing</i>	<i>4 (0.9%)</i>	<i>1 (1.1%)</i>	<i>0 (0%)</i>	<i>0 (0%)</i>	<i>0 (0%)</i>	<i>0 (0%)</i>	<i>0 (0%)</i>	<i>1 (20.0%)</i>

---

Legend: IQR, interquartile range; PCC, post COVID-19 condition; SD, standard deviation.

144 **Supplementary Table S14: Work ability outcomes, stratified by occupational changes related or unrelated to post COVID-19 condition.**

	No occupational change	Occupational change unrelated to PCC	Occupational change related to PCC
	(N=540)	(N=112)	(N=7)
<b>Current work ability (score)</b>			
Mean (SD)	8.9 (1.5)	8.1 (2.1)	3.4 (1.9)
Median (IQR)	9.0 (8.0 to 10.0)	8.5 (7.0 to 10.0)	4.0 (2.0 to 4.5)
Range	0 to 10	0 to 10	1 to 6
Missing	1 (0.2%)	2 (1.8%)	0 (0%)
<b>Current work ability (categorical)</b>			
Poor (score ≤6)	25 (4.6%)	15 (13.6%)	7 (100.0%)
Moderate (score 7-8)	139 (25.8%)	40 (36.4%)	0 (0.0%)
Excellent (score ≥9)	375 (69.6%)	55 (50.0%)	0 (0.0%)
Missing	1 (0.2%)	2 (1.8%)	0 (0%)
<b>Work ability related to physical demands</b>			
Very bad	3 (0.6%)	1 (0.9%)	1 (14.3%)
Rather bad	5 (0.9%)	4 (3.6%)	2 (28.6%)
Moderate	35 (6.5%)	8 (7.2%)	2 (28.6%)
Rather good	115 (21.4%)	37 (33.3%)	2 (28.6%)
Very good	379 (70.6%)	61 (55.0%)	0 (0.0%)
Missing	3 (0.6%)	1 (0.9%)	0 (0%)
<b>Work ability related to mental demands</b>			
Very bad	1 (0.2%)	2 (1.8%)	1 (14.3%)
Rather bad	2 (0.4%)	2 (1.8%)	3 (42.9%)
Moderate	50 (9.3%)	19 (17.1%)	3 (42.9%)

Rather good	165 (30.8%)	51 (45.9%)	0 (0.0%)
Very good	317 (59.3%)	37 (33.3%)	0 (0.0%)
<i>Missing</i>	<i>5 (0.9%)</i>	<i>1 (0.9%)</i>	<i>0 (0%)</i>
<b>Estimated work ability in future (2 years)</b>			
Unlikely	13 (2.4%)	3 (2.7%)	2 (33.3%)
Not certain	21 (3.9%)	13 (11.8%)	3 (50.0%)
Relatively certain	504 (93.7%)	94 (85.5%)	1 (16.7%)
<i>Missing</i>	<i>2 (0.4%)</i>	<i>2 (1.8%)</i>	<i>1 (14.3%)</i>

---

Legend: IQR, interquartile range; PCC, post COVID-19 condition; SD, standard deviation.