

Supplementary Materials

Risk-based prediction for optimal timing of booster vaccination for COVID-19 to prevent severe disease. 2023.

Contents

Technical Appendix.....	3
Supplemental Tables and Figures	15

Technical Appendix

In this appendix, we provide further methodologic description of the data, model structure, assumptions, and statistical analysis in this study.

Simulating vaccine-induced and hybrid protection against severe COVID-19

Literature to inform estimates on vaccine-induced and hybrid protection for severe COVID-19
We used published studies on the level of protection against severe COVID-19 generated from vaccination alone and hybrid immunity (vaccination and prior documented COVID-19) and the waning of this protection over time (see Table A1). We simulated vaccine-induced (without prior infection) and hybrid immunity separately given literature suggesting higher protection from hybrid immunity¹. Waning was defined as changes in level of protection against severe COVID-19 since the last vaccine dose or prior infection (whichever event was most recent), which is the definition mostly commonly employed in the studies used in this analysis.

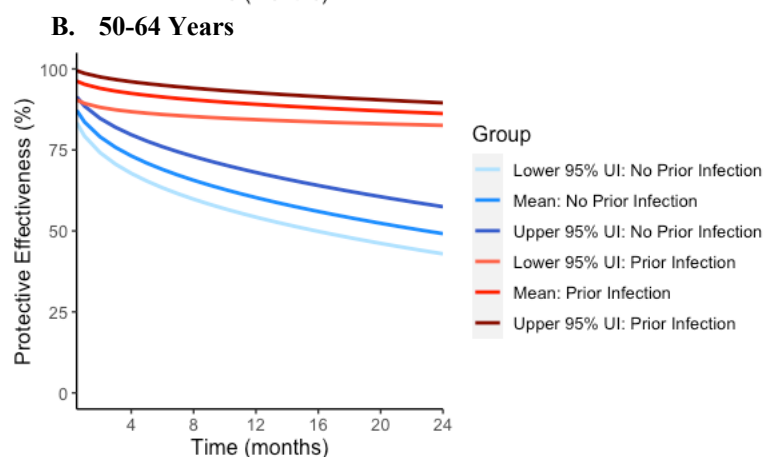
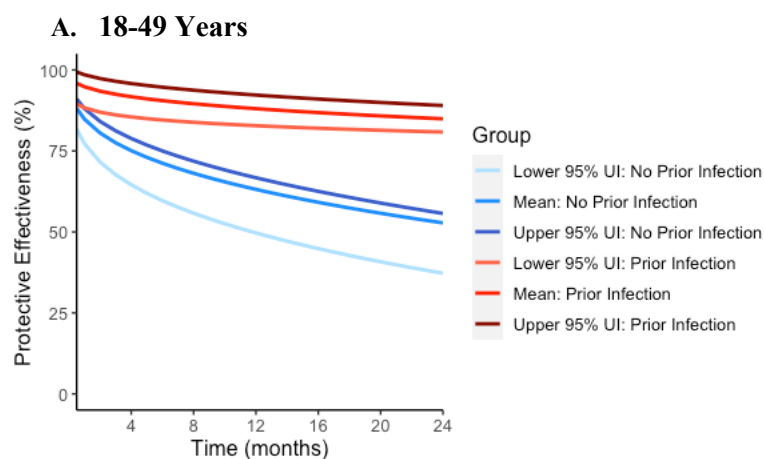
Table A1: Summary of literature on vaccine-induced and hybrid immunity to protect against severe COVID-19.

Vaccine status	Prior infection	Follow up time	References
<i>Absolute vaccine effectiveness estimates</i>			
Unvaccinated	Yes	12 months	COVID-19 Forecasting Team (<i>Lancet</i> , 2023) ² Bobrovitz et al. (<i>Lancet</i> , 2023) ¹
2-doses monovalent	Yes	8 months	Bobrovitz et al. (<i>Lancet</i> , 2023) ¹
	No	8 months	Bobrovitz et al. (<i>Lancet</i> , 2023) ¹ Ferdinands et al. (<i>BMJ</i> , 2022) ³
3-doses monovalent	Yes	8 months	Bobrovitz et al. (<i>Lancet</i> , 2023) ¹
	No	8 months	Bobrovitz et al. (<i>Lancet</i> , 2023) ¹ Ferdinands et al. (<i>BMJ</i> , 2022) ³
<i>Relative vaccine effectiveness estimates</i>			
Bivalent booster dose	Yes	6 months	Lin et al. (<i>NEJM</i> , 2023) ⁴
Bivalent booster dose	No	6 months	Lin et al. (<i>NEJM</i> , 2023) ⁴

Generating estimates on protection and waning against severe COVID-19

We simulated the impact of different bivalent booster vaccination schedules over a two-year time horizon. To do this, we needed data on the absolute protection against severe COVID-19 for any person, specific to their vaccine status, prior infection status, and time since last vaccine and/or prior infection. We used data available for both monovalent and bivalent vaccination (see Table

A1) and performed statistical modeling of this data to extrapolate the waning of protection over time over a 24-month period. We estimated waning of 3-dose protective effectiveness by age group and prior infection status over a 24-month period using a linear mixed effects model, calibrated to available literature (see Table A1). We modeled the outcome of protection against severe COVID-19. We modeled this outcome as the log of 1 minus protective effectiveness, with predictor variables of the log of months since last vaccine dose or COVID-19 illness (whichever was more recent), age group (18-49 years, 50-64 years, 65+ years), prior infection status, and vaccine status (unvaccinated, 2-doses, 3-doses). We included a random effect (intercept and slope) for each reference group. We used the R package ‘lmer’. Given data on hybrid immunity relied predominately on a single study¹, waning of hybrid protection over time has been seen against other outcomes^{2,5}, and waning against severe COVID-19 is seen elsewhere³, we downwardly adjusted this estimate and aligned it with relative vaccine effectiveness estimates of the bivalent booster in previously infected persons⁴ (total downward adjustment by 8%). For the immunocompromised population, we assumed that waning of protection was on average 14% lower in the immunocompromised population than the immunocompetent population based on literature estimates³, and adjusted waning curves accordingly. The estimates on protection against severe COVID-19 for vaccine alone and hybrid immunity as shown in Figure A1. These estimates of protection against severe COVID-19 aligned with recent data on the relative vaccine effectiveness of the bivalent booster (see Figure A2).



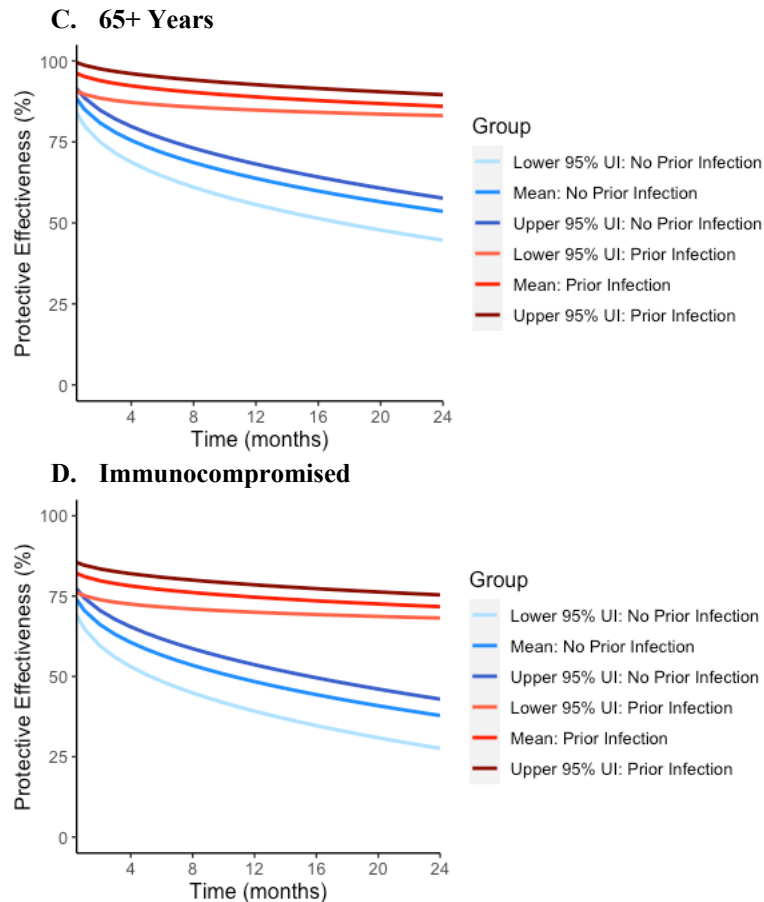


Figure A1: Protective effectiveness against severe COVID-19 generated from vaccine-induced and hybrid immunity by age group. Applying published literature, we estimated the absolute protection against severe COVID-19 from vaccine alone (blue line) and hybrid immunity (red line) for four risk groups: (A) 18-49 years; (B) 50-64 years; (C) 65+ years; and (D) immunocompromised population. We used a linear mixed effects model to extrapolate these estimates over a 24-month time period. Each estimate included a 95% interval, based on the confidence interval from the primary literature.

Simulating protection from COVID-19 bivalent booster vaccination

We simulated the benefit of a bivalent booster dose to reverse waning of protection to restore the maximal protection against severe COVID-19 (see Figure A1). As an example, for a person who is 65+ years (Figure A1, panel C), vaccinated but not previously infected, and last vaccinated or infected 4 months ago, they have a protective effectiveness of about 77% against severe COVID-19, compared to an immune naïve person. If this person receives a booster dose, we model this as shifting them left on this waning curve to time=0, which is about 88% protection, after which they will wane back down the curve over time. Therefore, the impact of additional vaccination conservatively did not increase the absolute protective effectiveness previously achieved, but only restores the lost protection due to waning. This approach to vaccine modeling achieved relative vaccine effectiveness estimates for vaccine alone and hybrid immunity similar to published estimates on the mRNA booster, including monovalent and bivalent doses (Figure A2). While we simulated bivalent mRNA doses, it may be reasonable to extrapolate this estimated protection to future COVID-19 booster vaccines such as a monovalent booster vaccine targeting XBB.1.5, especially while longer term follow up data is not yet available.

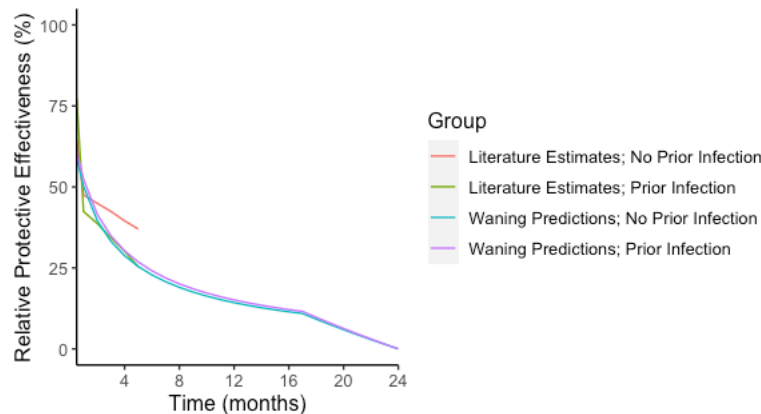


Figure A2: Relative vaccine effectiveness of a bivalent booster dose from literature (Lin DY et al, NEJM 2023) compared to the relative protection of additional booster in the microsimulation.

Prior infection and serosurveillance data

Prior infection status for each person in the model was informed by age-specific seroprevalence estimates, which were obtained from CDC estimates of serologic surveys with the nucleocapsid antibody (suggesting prior infection, not vaccine-induced antibody response).⁶ The last survey date was from February of 2022, thus age-specific seroprevalence estimates were updated as of this date. The model initialization for this study was September 2022, so we used cumulative COVID-19 case counts from March 2022 – August 2022⁷ to adjust these age-specific seroprevalence estimates to account for this missing time period. We assumed a 2x multiplier to account for case underreporting in the general population. For the immunocompromised population, we created a seroprevalence estimate based on a weighted average of age-specific seroprevalence estimates and published data on the age distribution of the immunocompromised population; we also applied a 3x multiplier to account for overall higher incidence in this population⁸. Assigning a time since last infection is further described in “Estimation of time since last COVID-19 vaccine or illness” section.

Model calibration

Estimation of time since last COVID-19 vaccine or illness

For calibration of the model (prior to bivalent vaccination rollout in September 2022), we estimated the level of protection against severe COVID-19 for each person in the model. This protection was specific to their vaccine status, prior infection status, and time since last vaccination or infection (to account for waning of protection). To simulate time since last COVID-19 vaccine or infection for each person, we separately simulated distributions of time since vaccination and COVID-19 using publicly available data. We calculated time since last COVID-19 event by taking the most recent time among the time since last vaccination, time since infection, or time since reinfection (see Figure A3, Panel D). The ‘time-since’ distributions by age-group are shown in Figure A3.

For time since last vaccination, we used publicly available data from California COVID-19 vaccine administration of monthly monovalent booster dose counts over time (up until September 1, 2022), which is likely broadly representative of the United States⁹. We simulated the most recent vaccine dose by randomly sampling from this distribution. This timeframe was chosen to follow the period prior to bivalent booster introduction. We assumed that the time

since last booster dose was conditional on the number of monovalent booster doses received by each person (either 1 or 2 booster doses); (see Figure A3, Panel A). We used available data to assign each individual either 1 or 2 monovalent booster doses (with the exception of the 18-49 year age group which we assumed were all 1 booster dose)¹. If a person received multiple booster doses, we sampled from a more recent time period.

For time since last infection (if applicable), we simulated their time since last COVID-19 infection by randomly sampling from publicly available data on the distribution of monthly COVID-19 cases over time (see Figure A3, Panel B)¹¹. We assumed 10% were reinfection over this period (see Figure A3, Panel C).

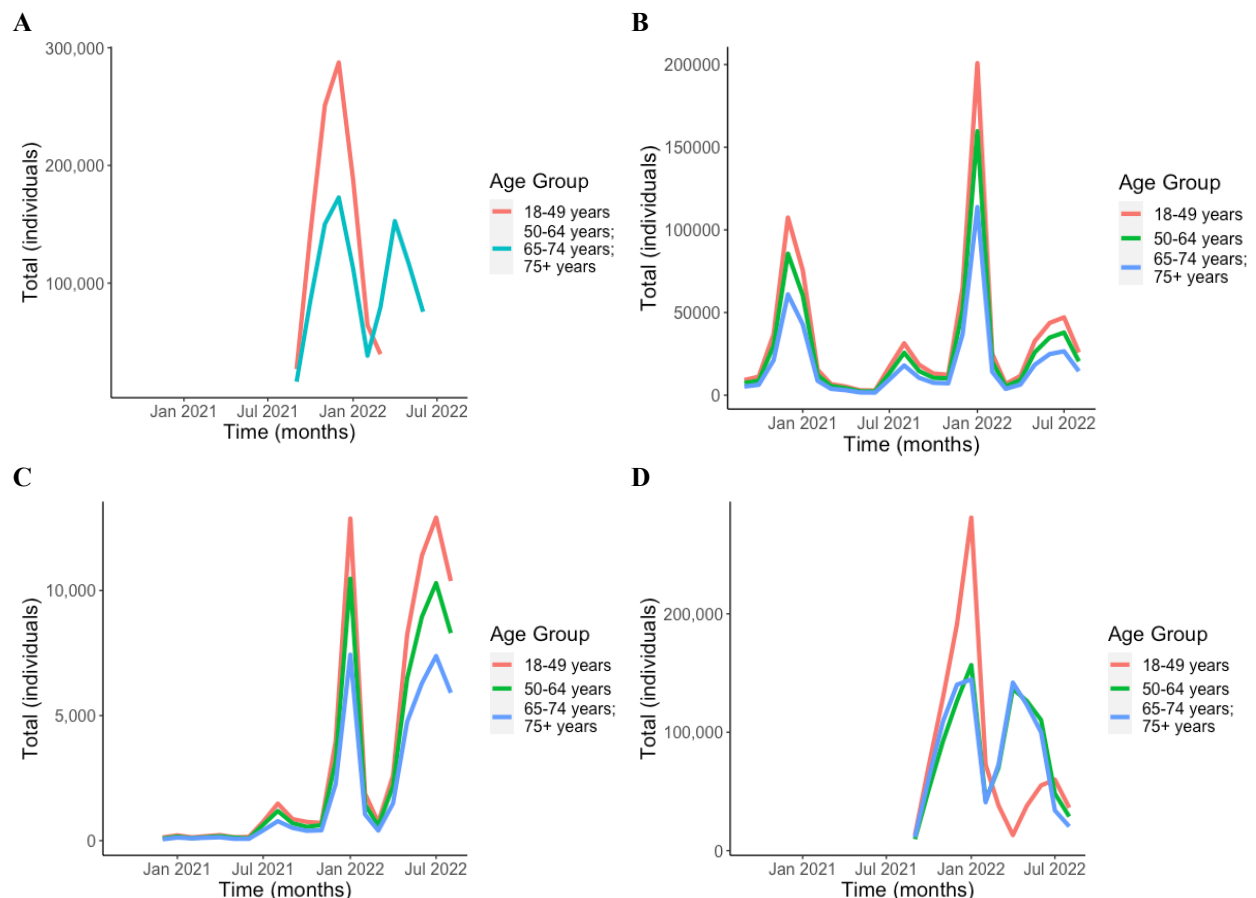


Figure A3: Data on COVID-19 vaccination, clinical case, re-infection to inform time since last COVID-19 vaccine or illness in the simulated population. We used publicly available data from California on: (A) COVID-19 monovalent booster dose administration; (B) COVID-19 clinical cases; (C) COVID-19 reinfections, assuming 10% reinfection. We sampled from these distributions to generate a distribution for time since last COVID-19 vaccine or infection (panel D).

Model Calibration and Prediction

The model was calibrated to observed data on age-specific estimates of monthly severe COVID-19 incidence (per 100,000 persons). We used publicly available data from US CDC on severe COVID-19 incidence (defined by hospitalization) by age group, using data over the 6-month period preceding bivalent vaccine roll out (March 2022 – August 2022)¹². We assumed all COVID-19 deaths were linked to a hospitalization, so we defined severe COVID-19 cases as

those leading to hospitalization or death. To estimate severe COVID-19 incidence in vaccinated persons only, we adjusted these age-specific estimates of severe COVID-19 risk by removing the contribution from unvaccinated persons. For this, we used data on COVID-19 death in unvaccinated and vaccinated populations by age⁷, unvaccinated population counts by age¹³, and population age distributions¹⁴.

The model calibration was done analytically, so no optimization algorithm was necessary. The model equation was: $Risk_{severe\ COVID} = \lambda * (1 - protection)$. Risk was estimated as monthly probability of severe COVID-19. The λ term was equal to risk in a fully susceptible person. Protection was defined as absolute protective effectiveness against severe COVID-19. The risk group-specific risk estimates for severe COVID-19 are shown in Table A2. The calibration plots of the simulated severe and non-severe COVID-19 outcome counts over time without any additional booster doses are shown in Figure A4 (counterfactual scenario).

We simulated non-severe COVID-19 given its role in generating protection and our assumed 90-day perfect immunity period. Table A2 includes the multipliers atop severe COVID-19 to generate the number of non-severe infections in the risk groups. To estimate non-severe COVID-19 in the age groups, we applied fixed multipliers to severe COVID-19 cases informed by CDC estimates of age-stratified ratios of infections¹⁵, and also assumed a 2-fold multiplier to account for underreporting of cases. To estimate non-severe COVID-19 in the immunocompromised group, we used an age-adjusted multiplier informed by the same CDC estimates of age-stratified ratios of infections, age distribution of the immunocompromised population^{14,16}, and cumulative risk ratio between immunocompromised and competent groups⁸.

The full reporting of results for predicted severe COVID-19 outcomes under each booster schedule are in the main manuscript (Table 2) and Supplementary Figure S1, and the results for predicted non-severe COVID-19 outcomes are shown in Supplementary Table S1. The results under no additional booster are in Table S2.

Table A2: Model calibration with risk estimates for severe COVID-19.

Risk Group	Monthly Severe COVID-19 Risk (λ) ^a	Monthly Incidence, per 100,000 persons (Observed)	Monthly Incidence, per 100,000 persons (Model)	Non-Severe Infection Multiplier
18-49 years	0.00060 (0.00042 - 0.00085)	7.9	7.8	100
50-64 years	0.00105 (0.00077 - 0.00138)	15.8	15.0	39.5
65-74 years	0.00216 (0.00166 - 0.00266)	40.4	41.2	10.9
75+ years	0.00594 (0.00458 - 0.00733)	112.7	106.0	4.3
Immunocompromised	0.00339 (0.00281 - 0.00392)	94.9	87.7	16.8

^aThe monthly severe COVID-19 risk estimate is multiplied by 1 minus the protective effectiveness in the model.

Note: stochastic variation explains the discrepancy between model and observed output.

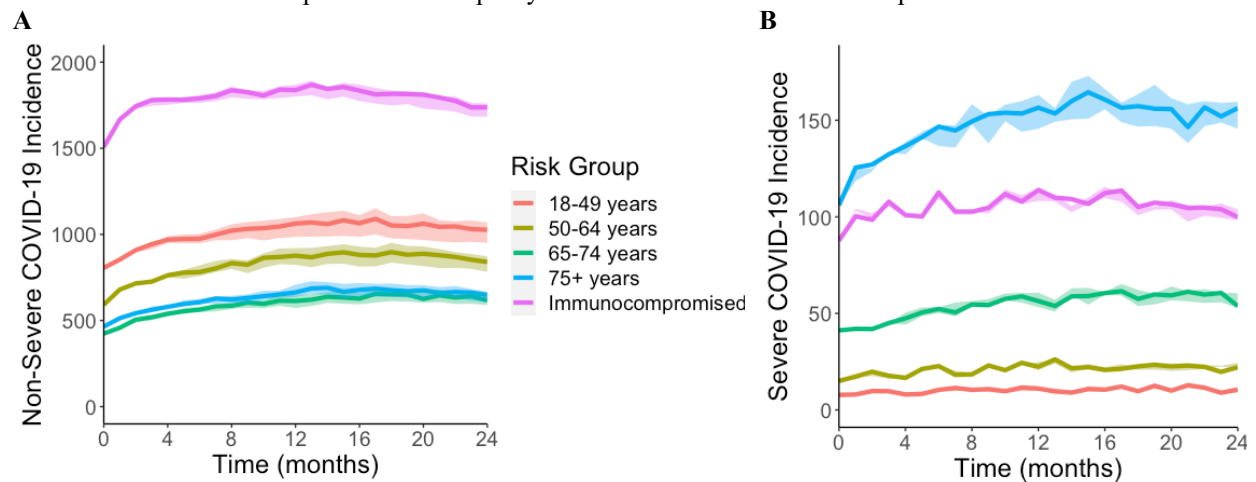


Figure A4: Monthly incidence of non-severe and severe COVID-19 outcomes in four age groups and the immunocompromised group over a two-year simulation period with no additional COVID-19 booster vaccination. We used a microsimulation population of 1 million per risk group and estimated person-level protection against non-severe and severe COVID-19 based on each person's vaccine status, prior infection history, and time since last vaccine or natural infection. We modeled the waning of each person's pre-existing protection at the start of the simulation, as no additional COVID-19 booster vaccination was distributed. The 95% uncertainty intervals are based on 95% CI of published literature of waning data.

Model validation

For model validation, we performed a comparison of model-predicted outcomes and observed outcomes over the first 3 months of bivalent vaccination in the United States (September 2022 – November 2022). We obtained observed data on age-specific estimates of monthly severe COVID-19 incidence (per 100,000 persons) using the same US CDC dataset on severe COVID-19 incidence and analytical approach as previously described¹². For the model-predicted outcomes, we simulated the one-time-dose bivalent booster schedule (coinciding with bivalent dose roll out), adjusting the number of vaccines that were released to match the proportions vaccinated with the bivalent booster by end of November 2022 in the United States^{13,17}. We compared the average monthly incidence of severe COVID-19 outcomes over the 3-month period (Table A3).

Table A3: Model validation comparing model-predicted severe COVID-19 incidence and observed incidence over the first 3 months of bivalent vaccination in the United States (September 2022 – November 2022).

Risk Group	Severe COVID-19 Monthly Incidence, per 100,000 persons (Observed)	Severe COVID-19 Monthly Incidence, per 100,000 persons (Model)	Proportion Vaccinated with Bivalent Booster by November 2022 ^a
18-49 years	5.8	6.8	0.147
50-64 years	15.9	16.2	0.147
65-74 years	46.3	37.5	0.326

75+ years	139.3	106.3	0.326
Immunocompromised	107.65	90.5	0.36

^a The proportion vaccinated used for the 18-49 years and 50-64 years age groups are the 18 years and older estimate. The proportion vaccinated used for the 65-74 years and 75+ years age groups are for the 65 years and older estimate.

Uncertainty analysis

To quantify uncertainty in the study findings, we generated 95% uncertainty intervals (95% UI) for our model estimate. These intervals account for the uncertainty in protective effectiveness and waning over time. They were generated from the 95% confidence intervals of the absolute protective effectiveness literature estimates (Table A1) as the lower and upper bounds for waning. We applied the same linear mixed effects model to the 95% confidence interval waning literature estimates to generate lower and upper bounds protective effectiveness over time. The predicted estimates of waning protective effectiveness by age group and prior infection status are shown in Figure A1.

Sensitivity analysis

Pessimistic and optimistic waning

We conducted a sensitivity analysis modeling pessimistic and optimistic waning of protection against severe COVID-19 outcomes. We reduced the rate of waning (optimistic assumption) or increased the rate of waning (pessimistic assumption) by 10%, as shown in Figure A5. This was done separately for each risk group. Then we simulated the COVID-19 booster schedules in each risk group cohort. The predicted annual risk of severe COVID-19 outcomes under each booster schedule are in the main manuscript (Figure 1). The predicted severe COVID-19 outcomes under each booster schedule are in Tables S3 and S4.

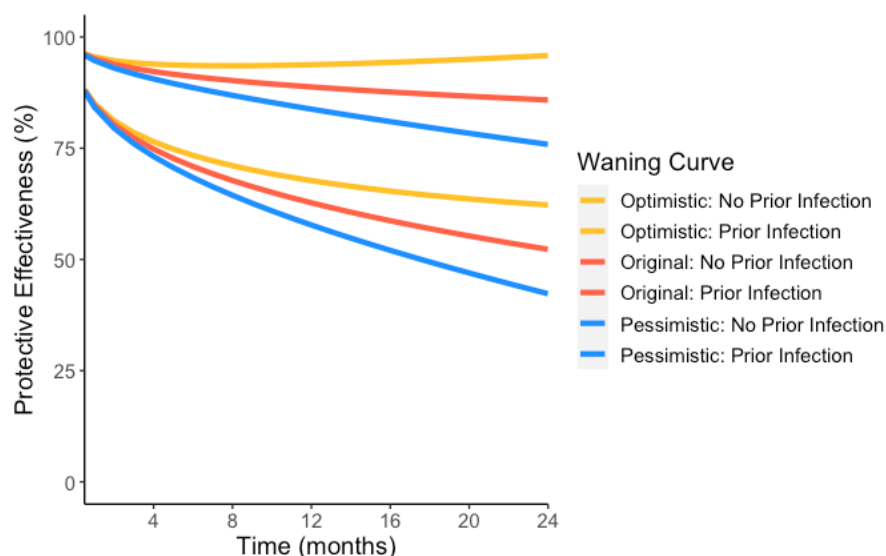


Figure A5: Protective effectiveness against severe COVID-19 generated from vaccine-induced and hybrid immunity with assumptions of pessimistic and optimistic waning. After generating the absolute predictions for vaccine-induced and hybrid immunity (red line), we reduced the rate of waning (optimistic assumption; yellow line) or increased the rate of waning (pessimistic assumption; blue line) by 10%.

Pessimistic and optimistic vaccine effectiveness

We conducted a sensitivity analysis modeling pessimistic and optimistic assumptions of overall protection against severe COVID-19 outcomes. We shifted the protection curves up (optimistic assumption) or down (pessimistic assumption) by 10%, as shown in Figure A6. Then we simulated the three COVID-19 booster schedules in each risk group cohort. The predicted annual risk of severe COVID-19 outcomes under each booster schedule are in the main manuscript (Figure 1). The predicted severe COVID-19 outcomes under each booster schedule are in Tables S5 and S6.

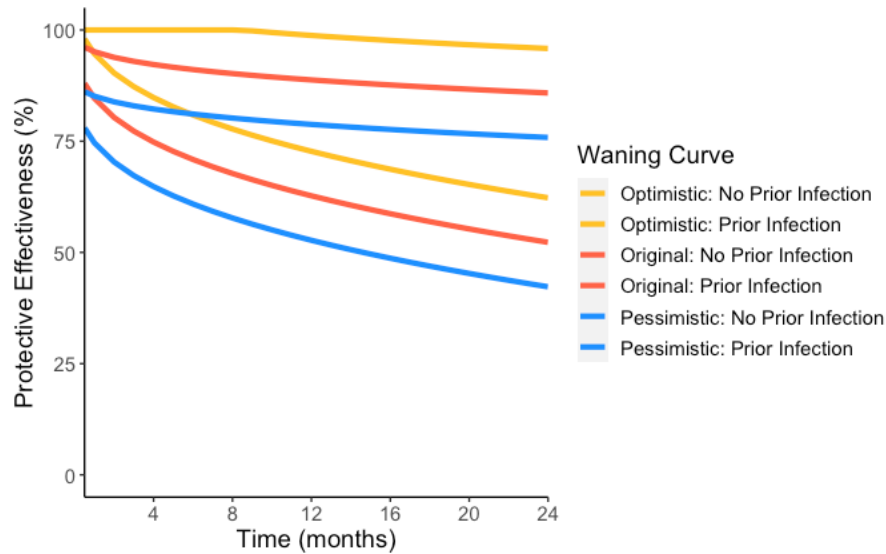


Figure A6: Protective effectiveness against severe COVID-19 generated from vaccine-induced and hybrid immunity with assumptions of pessimistic and optimistic vaccine effectiveness. After generating the absolute predictions for vaccine-induced and hybrid immunity (red line), we adjusted the overall waning up (optimistic assumption; yellow line) or down (pessimistic assumption; blue line) by 10%.

High and low incidence of severe COVID-19

We conducted a sensitivity analysis on severe COVID-19 incidence, simulating higher or lower incidence scenarios. For this analysis, we applied multipliers of either 0.5x (lower incidence) and 2x (higher incidence) to risk group-specific estimates of severe COVID-19 incidence before running the model calibration. Then we simulated the three COVID-19 booster schedules in each risk-group cohort. The predicted annual risk of severe COVID-19 outcomes under each booster schedule are in the main manuscript (Figure 1). The predicted severe COVID-19 outcomes under each booster schedule are in Tables S7 and S8.

High and low seroprevalence

We conducted a sensitivity analysis on seroprevalence, simulating higher, lower, and 100% seroprevalence scenarios. For the higher and lower seroprevalence scenarios, we incorporated a 25% relative increase (higher seroprevalence) or decrease (lower seroprevalence) to the seroprevalence estimates in each risk group before running the model calibration. Then we simulated the three COVID-19 booster schedules in each risk-group cohort. The predicted annual risk of severe COVID-19 outcomes under each booster schedule for the 100% seroprevalence sensitivity analysis is in the main manuscript (Figure 1). The predicted severe COVID-19 outcomes under each booster schedule are in Tables S9-S11 and the main manuscript.

Five-year time horizon

We conducted a sensitivity analysis simulating the impact of different booster vaccination schedules over a five-year time horizon instead of two years. We simulated the same three vaccination strategies from the main analysis: i) one-time booster at the start of the simulation (base case); ii) one-time booster followed by annual boosters (total of 5 doses); and iii) one-time booster followed by boosters every 6 months (total of 10 doses). We assumed that waning of protection remained fixed after 24 months. The predicted severe COVID-19 outcomes under each booster schedule are in Table S12.

Delayed vaccine administration

We conducted a sensitivity analysis simulating delayed vaccine administration, with the administration of boosters over a 6-month period rather than a 3-month period. We simulated the three COVID-19 booster schedules in each risk group cohort. The predicted severe COVID-19 outcomes under each booster schedule are in Table S13.

Higher sub-clinical infection

We conducted a sensitivity analysis with a higher proportion of sub-clinical COVID-19 infections. We applied a 2x multiplier to the risk group-specific non-severe infection multipliers. Then we simulated the three COVID-19 booster schedules in each risk-group cohort. The predicted severe COVID-19 outcomes under each booster schedule are in Table S14.

Lower vaccine effectiveness after first dose

We conducted a sensitivity analysis simulating lower vaccine effectiveness in subsequent booster doses after the first dose (applicable to annual and semiannual booster schedules only). Starting with the second booster dose, every vaccine dose that was administered had protection reset to waned protection at month 3 instead of resetting waning completely at time point 0. Then we simulated the COVID-19 booster schedules in each risk group cohort. The full reporting of results for severe COVID-19 outcomes under each booster schedule are in Table S15.

Model reporting checklist

We have completed the CHEERS checklist, which is a reporting standards checklist that be applied for simulation studies, as a supplemental file.

Appendix References

1. Bobrovitz N, Ware H, Ma X, et al. Protective effectiveness of previous SARS-CoV-2 infection and hybrid immunity against the omicron variant and severe disease: a systematic review and meta-regression. *Lancet Infect Dis.* 2023;23(5):556-567. doi:10.1016/S1473-3099(22)00801-5
3. Ferdinands JM, Rao S, Dixon BE, et al. Waning of vaccine effectiveness against moderate and severe covid-19 among adults in the US from the VISION network: test negative, case-control study. *BMJ.* 2022;379:e072141. doi:10.1136/bmj-2022-072141
4. Lin DY, Xu Y, Gu Y, et al. Effectiveness of Bivalent Boosters against Severe Omicron Infection. *N Engl J Med.* 2023;388(8):764-766. doi:10.1056/NEJMc2215471
5. Goldberg Y, Mandel M, Bar-On YM, et al. Protection and Waning of Natural and Hybrid Immunity to SARS-CoV-2. *N Engl J Med.* 2022;386(23):2201-2212. doi:10.1056/NEJMoA2118946
6. CDC. Nationwide COVID-19 Infection-Induced Antibody Seroprevalence (Commercial laboratories). Centers for Disease Control and Prevention. Published March 28, 2020. Accessed May 15, 2023. <https://covid.cdc.gov/covid-data-tracker>
7. CDC. Rates of COVID-19 Cases and Deaths by Vaccination Status. Centers for Disease Control and Prevention. Published March 28, 2020. Accessed May 15, 2023. <https://covid.cdc.gov/covid-data-tracker>
8. Bahremand T, Yao JA, Mill C, Piszczek J, Grant JM, Smolina K. COVID-19 hospitalisations in immunocompromised individuals in the Omicron era: a population-based observational study using surveillance data in British Columbia, Canada. *Lancet Reg Health – Am.* 2023;20. doi:10.1016/j.lana.2023.100461
9. CDPH. California Vaccine Progress Dashboard. Accessed January 25, 2023. <https://covid19.ca.gov/vaccination-progress-data/>
10. Lu P jun, Zhou T, Santibanez TA, et al. COVID-19 Bivalent Booster Vaccination Coverage and Intent to Receive Booster Vaccination Among Adolescents and Adults — United States, November–December 2022. *MMWR Morb Mortal Wkly Rep.* 2023;72(7):190-198. doi:10.15585/mmwr.mm7207a5
11. COVID-19 Time-Series Metrics by County and State - California Health and Human Services Open Data Portal. Accessed May 15, 2023. <https://data.chhs.ca.gov/dataset/covid-19-time-series-metrics-by-county-and-state>
12. CDC. COVID-NET Laboratory-confirmed COVID-19 hospitalizations. Centers for Disease Control and Prevention. Published March 28, 2020. Accessed May 15, 2023. <https://covid.cdc.gov/covid-data-tracker>

13. CDC. COVID-19 Vaccinations in the United States. Centers for Disease Control and Prevention. Published March 28, 2020. Accessed May 15, 2023. <https://covid.cdc.gov/covid-data-tracker>
14. Population of the U.S. by sex and age 2021. Statista. Accessed May 15, 2023. <https://www.statista.com/statistics/241488/population-of-the-us-by-sex-and-age/>
15. Risk for COVID-19 Infection, Hospitalization, and Death By Age Group. Centers for Disease Control and Prevention. Published February 11, 2020. Accessed May 15, 2023. <https://www.cdc.gov/coronavirus/2019-ncov/covid-data/investigations-discovery/hospitalization-death-by-age.html>
16. Patel M, Chen J, Kim S, et al. Analysis of MarketScan Data for Immunosuppressive Conditions and Hospitalizations for Acute Respiratory Illness, United States - Volume 26, Number 8—August 2020 - Emerging Infectious Diseases journal - CDC. doi:10.3201/eid2608.191493
17. Schumacher S, Presiado M, 2023. KFF COVID-19 Vaccine Monitor: January 2023. KFF. Published February 7, 2023. Accessed June 6, 2023. <https://www.kff.org/coronavirus-covid-19/poll-finding/kff-covid-19-vaccine-monitor-january-2023/>

Supplemental Tables and Figures

Table S1: Number of non-severe COVID-19 cases, risk, and number needed to treat to avert non-severe COVID-19 in five risk groups with different frequencies of COVID-19 booster vaccination.

	Total non-severe COVID-19 cases ^a	Absolute annual risk of non-severe COVID-19 (cases per 10,000; 95% UI)	Annual risk reduction of non-severe COVID-19		NNT to avert non-severe COVID-19 case ^a
			Absolute risk (cases per 10,000)	Relative risk (%)	
One-time bivalent booster^b					
18-49 years	211,760	1,059 (1,036 – 1,062)	--	--	--
50-64 years	172,986	865 (855 – 865)	--	--	--
65-74 years	122,817	614 (607 – 620)	--	--	--
75+ years	132,003	660 (652 – 662)	--	--	--
Immunocompromised	408,469	2,042 (2,025 – 2,042)	--	--	--
Annual bivalent booster					
18-49 years	171,071	855 (764 – 933)	203	19%	25
50-64 years	139,380	697 (650 – 734)	168	19%	30
65-74 years	97,583	488 (467 – 506)	126	21%	40
75+ years	105,191	526 (501 – 547)	134	20%	38
Immunocompromised	368,973	1,845 (1,820 – 1,871)	197	10%	26
Semiannual bivalent booster (every 6 months)					
18-49 years	136,386	682 (541 – 817)	377	36%	14
50-64 years	110,494	552 (474 – 626)	312	36%	17
65-74 years	77,230	386 (346 – 424)	228	37%	22
75+ years	83,080	415 (371 – 458)	245	37%	21
Immunocompromised	334,553	1,673 (1,632 – 1,726)	370	18%	14

^aEstimated over 2-year simulation period in population of 1 million persons.

^bOne-time bivalent booster is the baseline intervention for risk reduction calculations.

NNT; number needed to treat, which is based on the number of persons needing to follow a vaccine schedule to avert one non-severe COVID-19 case

Table S2: Number of severe COVID-19 cases, risk, and number needed to treat to avert severe COVID-19 in five risk groups with no bivalent COVID-19 booster vaccination.

	Total severe COVID-19 cases ^a	Absolute annual risk of severe COVID-19 (cases per 100,000; 95% UI)
No bivalent booster ^b		
18-49 years	2,550	128 (120 – 131)
50-64 years	5,250	263 (251 – 271)
65-74 years	13,579	679 (651 – 709)
75+ years	37,024	1,851 (1,763 – 1,906)
Immunocompromised	26,353	1,318 (1,289 – 1,332)

^aEstimated over 2-year simulation period in population of 1 million persons.

^bNo bivalent boosters given during simulation, although persons have received at least one monovalent booster dose prior to the initiation of the simulation.

Table S3: Sensitivity analysis of pessimistic waning on the number of severe COVID-19 cases, risk, and number needed to treat to avert severe COVID-19 in five risk groups with different frequencies of COVID-19 booster vaccination.

	Total severe COVID- 19 cases ^a	Absolute annual risk of severe COVID-19 (cases per 100,000; 95% UI)	Annual risk reduction of severe COVID-19 Absolute risk (cases per 100,000)		Relative risk (%)	NNT to avert severe COVID-19 case ^a
One-time bivalent booster ^b						
18-49 years	2,302	115 (113 – 116)	--	--	--	--
50-64 years	4,811	241 (229 – 243)	--	--	--	--
65-74 years	12,294	615 (597 – 620)	--	--	--	--
75+ years	32,937	1,647 (1,611 – 1,671)	--	--	--	--
Immunocompromised	29,566	1,478 (1,448 – 1,500)	--	--	--	--
Annual bivalent booster						
18-49 years	1,743	87 (80 – 94)	28	24%		1,789
50-64 years	3,487	174 (168 – 180)	66	28%		756
65-74 years	9,066	453 (442 – 470)	161	26%		310
75+ years	24,876	1,244 (1,175 – 1,276)	403	24%		125
Immunocompromised	25,784	1,289 (1,279 – 1,304)	189	13%		265
Semiannual bivalent booster (every 6 months)						
18-49 years	1,268	63 (53 – 78)	52	45%		968
50-64 years	2,645	132 (118 – 153)	108	45%		462
65-74 years	6,818	341 (299 – 376)	274	45%		183
75+ years	18,363	918 (829 – 1,019)	729	44%		69
Immunocompromised	22,882	1,144 (1,116 – 1,198)	334	23%		150

^aEstimated over 2-year simulation period in population of 1 million persons.

^bOne-time bivalent booster is the baseline intervention for risk reduction calculations.

NNT; number needed to treat, which is based on the number of persons needing to follow a vaccine schedule to avert one severe COVID-19 case

Table S4: Sensitivity analysis of optimistic waning on the number of severe COVID-19 cases, risk, and number needed to treat to avert severe COVID-19 in five risk groups with different frequencies of COVID-19 booster vaccination.

	Total severe COVID- 19 cases ^a	Absolute annual risk of severe COVID-19 (cases per 100,000; 95% UI)	Annual risk reduction of severe COVID-19 Absolute risk (cases per 100,000)		Relative risk (%)	NNT to avert severe COVID-19 case ^a
One-time bivalent booster ^b						
18-49 years	1,938	97 (83 – 101)	--	--	--	--
50-64 years	3,865	193 (176 – 194)	--	--	--	--
65-74 years	10,351	518 (509 – 526)	--	--	--	--
75+ years	28,167	1,408 (1,361 – 1,422)	--	--	--	--
Immunocompromised	26,733	1,337 (1,321 – 1,337)	--	--	--	--
Annual bivalent booster						
18-49 years	1,810	91 (76 – 101)	6	7%		7,813
50-64 years	3,421	171 (157 – 185)	22	11%		2,253
65-74 years	9,047	452 (424 – 476)	65	13%		767
75+ years	24,583	1,229 (1,145 – 1,282)	179	13%		280
Immunocompromised	26,645	1,332 (1,331 – 1,354)	5	0.3%		11,364
Semiannual bivalent booster (every 6 months)						
18-49 years	1,601	80 (62 – 92)	17	17%		2,968
50-64 years	3,022	151 (127 – 166)	42	22%		1,187
65-74 years	7,619	381 (328 – 414)	137	26%		367
75+ years	20,417	1,021 (904 – 1,124)	388	28%		130
Immunocompromised	26,065	1,303 (1,302 – 1,340)	34	2%		1,498

^aEstimated over 2-year simulation period in population of 1 million persons.

^bOne-time bivalent booster is the baseline intervention for risk reduction calculations.

NNT; number needed to treat, which is based on the number of persons needing to follow a vaccine schedule to avert one severe COVID-19 case

Table S5: Sensitivity analysis of pessimistic vaccine effectiveness on the number of severe COVID-19 cases, risk, and number needed to treat to avert severe COVID-19 in five risk groups with different frequencies of COVID-19 booster vaccination.

	Total severe COVID- 19 cases ^a	Absolute annual risk of severe COVID-19 (cases per 100,000; 95% UI)	Annual risk reduction of severe COVID-19 Absolute risk (cases per 100,000)		Relative risk (%)	NNT to avert severe COVID-19 case ^a
One-time bivalent booster ^b						
18-49 years	2,239	112 (110 – 112)	--	--	--	--
50-64 years	4,372	219 (219 – 221)	--	--	--	--
65-74 years	11,540	577 (571 – 578)	--	--	--	--
75+ years	31,224	1,561 (1,546 – 1,572)	--	--	--	--
Immunocompromised	28,078	1,403 (1,387 – 1,412)	--	--	--	--
Annual bivalent booster						
18-49 years	1,957	98 (97 – 101)	14	13%		3,547
50-64 years	3,797	190 (189 – 195)	29	13%		1,740
65-74 years	9,988	499 (491 – 506)	78	13%		645
75+ years	26,679	1,333 (1,316 – 1,354)	227	15%		221
Immunocompromised	26,484	1,324 (1,322 – 1,335)	80	6%		628
Semiannual bivalent booster (every 6 months)						
18-49 years	1,793	90 (85 – 95)	22	20%		2,243
50-64 years	3,363	168 (165 – 174)	50	23%		992
65-74 years	8,500	425 (412 – 438)	152	26%		329
75+ years	23,091	1,154 (1,109 – 1,195)	407	26%		123
Immunocompromised	25,199	1,260 (1,255 – 1,292)	144	10%		348

^aEstimated over 2-year simulation period in population of 1 million persons.

^bOne-time bivalent booster is the baseline intervention for risk reduction calculations.

NNT; number needed to treat, which is based on the number of persons needing to follow a vaccine schedule to avert one severe COVID-19 case

Table S6: Sensitivity analysis of optimistic vaccine effectiveness on the number of severe COVID-19 cases, risk, and number needed to treat to avert severe COVID-19 in five risk groups with different frequencies of COVID-19 booster vaccination.

	Total severe COVID- 19 cases ^a	Absolute annual risk of severe COVID-19 (cases per 100,000; 95% UI)	Annual risk reduction of severe COVID-19 Absolute risk (cases per 100,000)		Relative risk (%)	NNT to avert severe COVID-19 case ^a
One-time bivalent booster ^b						
18-49 years	1,896	95 (67 – 98)	--	--	--	--
50-64 years	3,942	197 (195 – 214)	--	--	--	--
65-74 years	11,304	565 (556 – 575)	--	--	--	--
75+ years	29,961	1,498 (1,488 – 1,498)	--	--	--	--
Immunocompromised	28,993	1,450 (1,403 – 1,486)	--	--	--	--
Annual bivalent booster						
18-49 years	1,103	55 (48 – 77)	40	42%		1,262
50-64 years	2,755	138 (128 – 161)	59	30%		843
65-74 years	7,529	376 (369 – 416)	189	33%		265
75+ years	20,557	1,028 (979 – 1,106)	470	31%		107
Immunocompromised	25,183	1,259 (1,228 – 1,302)	191	13%		263
Semiannual bivalent booster (every 6 months)						
18-49 years	758	38 (33 – 55)	57	60%		879
50-64 years	1,871	94 (80 – 107)	103	53%		483
65-74 years	5,012	251 (212 – 287)	315	56%		159
75+ years	13,650	683 (558 – 792)	816	54%		62
Immunocompromised	21,833	1,092 (1,010 – 1,205)	358	25%		140

^aEstimated over 2-year simulation period in population of 1 million persons.

^bOne-time bivalent booster is the baseline intervention for risk reduction calculations.

NNT; number needed to treat, which is based on the number of persons needing to follow a vaccine schedule to avert one severe COVID-19 case

Table S7: Sensitivity analysis of high severe COVID-19 incidence on the number of severe COVID-19 cases, risk, and number needed to treat to avert severe COVID-19 in five risk groups with different frequencies of COVID-19 booster vaccination.

	Total severe COVID- 19 cases ^a	Absolute annual risk of severe COVID-19 (cases per 100,000; 95% UI)	Annual risk reduction of severe COVID-19 Absolute risk (cases per 100,000)		Relative risk (%)	NNT to avert severe COVID-19 case ^a
One-time bivalent booster ^b						
18-49 years	3,875	194 (182 – 199)	--	--	--	--
50-64 years	7,986	399 (391 – 400)	--	--	--	--
65-74 years	21,252	1,062 (1,057 – 1,080)	--	--	--	--
75+ years	56,947	2,847 (2,824 – 2,852)	--	--	--	--
Immunocompromised	43,856	2,193 (2,174 – 2,195)	--	--	--	--
Annual bivalent booster						
18-49 years	3,163	158 (137 – 177)	36	18%		1,405
50-64 years	6,681	334 (311 – 355)	65	16%		767
65-74 years	17,207	860 (811 – 911)	202	19%		248
75+ years	46,292	2,315 (2,170 – 2,428)	533	19%		94
Immunocompromised	40,522	2,026 (1,981 – 2,066)	167	8%		300
Semiannual bivalent booster (every 6 months)						
18-49 years	2,578	129 (101 – 156)	65	33%		772
50-64 years	5,536	277 (223 – 311)	123	31%		409
65-74 years	13,775	689 (613 – 758)	374	35%		134
75+ years	36,944	1,847 (1,638 – 2,062)	1,000	35%		50
Immunocompromised	37,354	1,868 (1,811 – 1,931)	325	15%		154

^aEstimated over 2-year simulation period in population of 1 million persons.

^bOne-time bivalent booster is the baseline intervention for risk reduction calculations.

NNT; number needed to treat, which is based on the number of persons needing to follow a vaccine schedule to avert one severe COVID-19 case

Table S8: Sensitivity analysis of low severe COVID-19 incidence on the number of severe COVID-19 cases, risk, and number needed to treat to avert severe COVID-19 in five risk groups with different frequencies of COVID-19 booster vaccination.

	Total severe COVID- 19 cases ^a	Absolute annual risk of severe COVID-19 (cases per 100,000; 95% UI)	Annual risk reduction of severe COVID-19 Absolute risk (cases per 100,000)		Relative risk (%)	NNT to avert severe COVID-19 case ^a
One-time bivalent booster ^b						
18-49 years	1,130	57 (57 – 58)	--	--	--	--
50-64 years	2,291	115 (113 – 119)	--	--	--	--
65-74 years	5,895	295 (291 – 296)	--	--	--	--
75+ years	15,911	796 (785 – 802)	--	--	--	--
Immunocompromised	12,948	647 (641 – 651)	--	--	--	--
Annual bivalent booster						
18-49 years	931	47 (42 – 51)	10	18%		5,026
50-64 years	1,855	93 (87 – 97)	22	19%		2,294
65-74 years	4,615	231 (223 – 240)	64	22%		782
75+ years	12,683	634 (611 – 656)	161	20%		310
Immunocompromised	11,468	573 (573 – 585)	74	11%		676
Semiannual bivalent booster (every 6 months)						
18-49 years	735	37 (30 – 43)	20	35%		2,532
50-64 years	1,450	73 (61 – 84)	42	37%		1,190
65-74 years	3,652	183 (167 – 202)	112	38%		446
75+ years	9,898	495 (448 – 552)	301	38%		167
Immunocompromised	10,360	518 (506 – 535)	129	20%		387

^aEstimated over 2-year simulation period in population of 1 million persons.

^bOne-time bivalent booster is the baseline intervention for risk reduction calculations.

NNT; number needed to treat, which is based on the number of persons needing to follow a vaccine schedule to avert one severe COVID-19 case

Table S9: Sensitivity analysis of lower seroprevalence on the number of severe COVID-19 cases, risk, and number needed to treat to avert severe COVID-19 in five risk groups with different frequencies of COVID-19 booster vaccination.

	Total severe COVID- 19 cases ^a	Absolute annual risk of severe COVID-19 (cases per 100,000; 95% UI)	Annual risk reduction of severe COVID-19 Absolute risk (cases per 100,000)		Relative risk (%)	NNT to avert severe COVID-19 case ^a
One-time bivalent booster ^b						
18-49 years	2,017	99 (98 – 99)	--	--	--	--
50-64 years	4,274	213 (210 – 214)	--	--	--	--
65-74 years	11,050	553 (551 – 563)	--	--	--	--
75+ years	30,122	1,506 (1,487 – 1,517)	--	--	--	--
Immunocompromised	25,193	1,260 (1,244 – 1,273)	--	--	--	--
Annual bivalent booster						
18-49 years	1,648	82 (75 – 86)	18	18%		2,711
50-64 years	3,433	172 (166 – 180)	42	20%		1,190
65-74 years	8,767	438 (420 – 454)	114	21%		439
75+ years	23,968	1,198 (1,139 – 1,224)	308	20%		163
Immunocompromised	20,768	1,038 (1,028 – 1,050)	221	18%		226
Semiannual bivalent booster (every 6 months)						
18-49 years	1,283	64 (55 – 72)	37	36%		1,363
50-64 years	2,739	137 (124 – 152)	77	36%		652
65-74 years	6,896	345 (317 – 369)	208	38%		241
75+ years	18,711	936 (863 – 1,001)	571	38%		88
Immunocompromised	18,552	928 (905 – 958)	332	26%		151

^aEstimated over 2-year simulation period in population of 1 million persons.

^bOne-time bivalent booster is the baseline intervention for risk reduction calculations.

NNT; number needed to treat, which is based on the number of persons needing to follow a vaccine schedule to avert one severe COVID-19 case

Table S10: Sensitivity analysis of higher seroprevalence on the number of severe COVID-19 cases, risk, and number needed to treat to avert severe COVID-19 in five risk groups with different frequencies of COVID-19 booster vaccination.

	Total severe COVID- 19 cases ^a	Absolute annual risk of severe COVID-19 (cases per 100,000; 95% UI)	Annual risk reduction of severe COVID-19 Absolute risk (cases per 100,000)		Relative risk (%)	NNT to avert severe COVID-19 case ^a
One-time bivalent booster ^b						
18-49 years	2,399	120 (118 – 125)	--	--	--	--
50-64 years	4,698	235 (232 – 239)	--	--	--	--
65-74 years	11,394	570 (550 – 571)	--	--	--	--
75+ years	30,437	1,522 (1,490 – 1,531)	--	--	--	--
Immunocompromised	26,885	1,344 (1,317 – 1,360)	--	--	--	--
Annual bivalent booster						
18-49 years	1,993	100 (91 – 107)	20	17%		2,464
50-64 years	3,751	188 (170 – 203)	47	20%		1,056
65-74 years	9,024	451 (434 – 466)	119	21%		422
75+ years	24,346	1,217 (1,152 – 1,270)	305	20%		165
Immunocompromised	23,417	1,171 (1,154 – 1,180)	173	13%		289
Semiannual bivalent booster (every 6 months)						
18-49 years	1,624	81 (61 – 97)	39	32%		1,291
50-64 years	2,881	144 (118 – 173)	91	39%		551
65-74 years	7,109	355 (312 – 401)	214	38%		234
75+ years	19,181	959 (843 – 1,074)	563	37%		89
Immunocompromised	21,400	1,070 (1,048 – 1,106)	274	20%		183

^aEstimated over 2-year simulation period in population of 1 million persons.

^bOne-time bivalent booster is the baseline intervention for risk reduction calculations.

NNT; number needed to treat, which is based on the number of persons needing to follow a vaccine schedule to avert one severe COVID-19 case

Table S11: Sensitivity analysis of 100% seroprevalence on the number of severe COVID-19 cases, risk, and number needed to treat to avert severe COVID-19 in five risk groups with different frequencies of COVID-19 booster vaccination.

	Total severe COVID- 19 cases ^a	Absolute annual risk of severe COVID-19 (cases per 100,000; 95% UI)	Annual risk reduction of severe COVID-19 Absolute risk (cases per 100,000)		Relative risk (%)	NNT to avert severe COVID-19 case ^a
One-time bivalent booster ^b						
18-49 years	2,399	120 (118 – 125)	--	--	--	--
50-64 years	5,437	272 (253 – 292)	--	--	--	--
65-74 years	13,638	682 (634 – 750)	--	--	--	--
75+ years	37,498	1,875 (1,760 – 2,033)	--	--	--	--
Immunocompromised	29,216	1,460 (1,411 – 1,488)	--	--	--	--
Annual bivalent booster						
18-49 years	1,993	100 (91 – 107)	20	17%		2,464
50-64 years	4,229	211 (195 – 229)	60	22%		828
65-74 years	10,947	547 (514 – 571)	135	20%		372
75+ years	29,979	1,499 (1,395 – 1,571)	376	20%		133
Immunocompromised	26,195	1,310 (1,305 – 1,323)	151	10%		332
Semiannual bivalent booster (every 6 months)						
18-49 years	1,624	81 (61 – 97)	39	32%		1,291
50-64 years	3,378	169 (129 – 204)	103	38%		486
65-74 years	8,798	440 (329 – 515)	242	35%		207
75+ years	23,800	1,190 (888 – 1,413)	685	37%		74
Immunocompromised	24,345	1,217 (1,195 – 1,265)	243	17%		206

^aEstimated over 2-year simulation period in population of 1 million persons.

^bOne-time bivalent booster is the baseline intervention for risk reduction calculations.

NNT; number needed to treat, which is based on the number of persons needing to follow a vaccine schedule to avert one severe COVID-19 case

Table S12: Sensitivity analysis of five-year simulation period on the number of severe COVID-19 cases, risk, and number needed to treat to avert severe COVID-19 in five risk groups with different frequencies of COVID-19 booster vaccination.

	Total severe COVID- 19 cases ^a	Absolute annual risk of severe COVID-19 (cases per 100,000; 95% UI)	Annual risk reduction of severe COVID-19 Absolute risk (cases per 100,000) Relative risk (%)		NNT to avert severe COVID-19 case ^a
One-time bivalent booster ^b					
18-49 years	5,769	114 (110 – 114)	--	--	--
50-64 years	11,674	233 (222 – 235)	--	--	--
65-74 years	30,511	610 (588 – 623)	--	--	--
75+ years	80,780	1,616 (1,566 – 1,643)	--	--	--
Immunocompromised	59,229	1,185 (1,154 – 1,192)	--	--	--
Annual bivalent booster					
18-49 years	3,981	80 (68 – 88)	36	31%	560
50-64 years	8,073	161 (145 – 175)	73	31%	278
65-74 years	20,815	416 (388 – 439)	194	32%	104
75+ years	55,752	1,115 (1,033 – 1,173)	501	31%	40
Immunocompromised	50,534	1,011 (993 – 1,033)	174	15%	116
Semiannual bivalent booster (every 6 months)					
18-49 years	3,158	63 (48 – 79)	52	45%	383
50-64 years	6,438	129 (109 – 149)	105	45%	191
65-74 years	16,533	331 (290 – 367)	280	46%	72
75+ years	44,180	883 (773 – 991)	732	45%	28
Immunocompromised	46,166	923 (894 - 962)	261	22%	77

^aEstimated over 5-year simulation period in population of 1 million persons.

^bOne-time bivalent booster is the baseline intervention for risk reduction calculations.

NNT; number needed to treat, which is based on the number of persons needing to follow a vaccine schedule to avert one severe COVID-19 case

Table S13: Sensitivity analysis of delayed vaccine administration on the number of severe COVID-19 cases, risk, and number needed to treat to avert severe COVID-19 in five risk groups with different frequencies of COVID-19 booster vaccination.

	Total severe COVID- 19 cases ^a	Absolute annual risk of severe COVID-19 (cases per 100,000; 95% UI)	Annual risk reduction of severe COVID-19 Absolute risk (cases per 100,000)		Relative risk (%)	NNT to avert severe COVID-19 case ^a
One-time bivalent booster ^b						
18-49 years	2,069	103 (103 – 106)	--	--	--	--
50-64 years	4,231	212 (210 – 212)	--	--	--	--
65-74 years	11,367	568 (560 – 570)	--	--	--	--
75+ years	30,149	1,507 (1,507 – 1,511)	--	--	--	--
Immunocompromised	24,062	1,203 (1,193 – 1,206)	--	--	--	--
Annual bivalent booster						
18-49 years	1,730	87 (79 – 95)	17	16%		2,950
50-64 years	3,416	171 (161 – 184)	41	19%		1,227
65-74 years	9,074	454 (432 – 472)	115	20%		437
75+ years	24,570	1,229 (1,157 – 1,277)	279	19%		180
Immunocompromised	21,910	1,096 (1,077 – 1,110)	108	9%		465
Semiannual bivalent booster (every 6 months)						
18-49 years	1,395	70 (58 – 85)	34	33%		1,484
50-64 years	2,850	143 (123 – 158)	69	33%		725
65-74 years	7,330	367 (329 – 400)	202	36%		248
75+ years	19,633	982 (888 – 1,082)	526	35%		96
Immunocompromised	20,012	1,001 (971 – 1,030)	203	17%		247

^aEstimated over 2-year simulation period in population of 1 million persons.

^bOne-time bivalent booster is the baseline intervention for risk reduction calculations.

NNT; number needed to treat, which is based on the number of persons needing to follow a vaccine schedule to avert one severe COVID-19 case

Table S14: Sensitivity analysis of higher sub-clinical infection on the number of severe COVID-19 cases, risk, and number needed to treat to avert severe COVID-19 in five risk groups with different frequencies of COVID-19 booster vaccination.

	Total severe COVID- 19 cases ^a	Absolute annual risk of severe COVID-19 (cases per 100,000; 95% UI)	Annual risk reduction of severe COVID-19 Absolute risk (cases per 100,000)		Relative risk (%)	NNT to avert severe COVID-19 case ^a
One-time bivalent booster ^b						
18-49 years	2,007	100 (91 – 100)	--	--	--	--
50-64 years	4,035	202 (196 – 202)	--	--	--	--
65-74 years	10,831	542 (535 – 542)	--	--	--	--
75+ years	29,174	1,445 (1,431 – 1,454)	--	--	--	--
Immunocompromised	22,059	1,095 (1,092 – 1,103)	--	--	--	--
Annual bivalent booster						
18-49 years	1,646	82 (70 – 88)	18	18%		2,771
50-64 years	3,376	169 (156 – 180)	33	16%		1,518
65-74 years	8,737	437 (402 – 454)	105	19%		478
75+ years	23,470	1,174 (1,108 – 1,234)	285	20%		176
Immunocompromised	20,352	1,018 (1,000 – 1,029)	85	8%		586
Semiannual bivalent booster (every 6 months)						
18-49 years	1,310	66 (53 – 78)	35	35%		1,435
50-64 years	2,721	136 (107 – 156)	66	33%		762
65-74 years	6,867	343 (310 – 383)	198	37%		253
75+ years	18,627	931 (831 – 1,040)	527	36%		95
Immunocompromised	18,692	935 (910 – 972)	168	15%		298

^aEstimated over 2-year simulation period in population of 1 million persons.

^bOne-time bivalent booster is the baseline intervention for risk reduction calculations.

NNT; number needed to treat, which is based on the number of persons needing to follow a vaccine schedule to avert one severe COVID-19 case

Table S15: Sensitivity analysis of lower vaccine effectiveness for subsequent doses after the first dose on the number of severe COVID-19 cases, risk, and number needed to treat to avert severe COVID-19 in five risk groups with different frequencies of COVID-19 booster vaccination.

	Total severe COVID- 19 cases ^a	Absolute annual risk of severe COVID-19 (cases per 100,000; 95% UI)	Annual risk reduction of severe COVID-19 Absolute risk (cases per 100,000)		Relative risk (%)	NNT to avert severe COVID-19 case ^a
One-time bivalent booster ^b						
18-49 years	2,158	108 (105 – 108)	--	--	--	--
50-64 years	4,365	218 (216 – 218)	--	--	--	--
65-74 years	11,491	575 (564 – 581)	--	--	--	--
75+ years	30,861	1,543 (1,529 – 1,553)	--	--	--	--
Immunocompromised	24,194	1,210 (1,202 – 1,218)	--	--	--	--
Annual bivalent booster						
18-49 years	2,043	102 (95 – 104)	6	5%		8,696
50-64 years	4,004	200 (192 – 204)	18	8%		2,771
65-74 years	10,634	532 (518 – 535)	43	7%		1,167
75+ years	28,521	1,426 (1,396 – 1,441)	117	8%		428
Immunocompromised	22,877	1,144 (1,135 – 1,150)	66	5%		760
Semiannual bivalent booster (every 6 months)						
18-49 years	1,735	87 (75 – 97)	21	20%		2,365
50-64 years	3,403	170 (164 – 181)	48	22%		1,040
65-74 years	8,882	444 (421 – 468)	130	23%		384
75+ years	24,159	1208 (1,135 – 1,262)	335	22%		150
Immunocompromised	21,759	1,088 (1,074 – 1,107)	122	10%		411

^aEstimated over 2-year simulation period in population of 1 million persons.

^bOne-time bivalent booster is the baseline intervention for risk reduction calculations.

NNT; number needed to treat, which is based on the number of persons needing to follow a vaccine schedule to avert one severe COVID-19 case

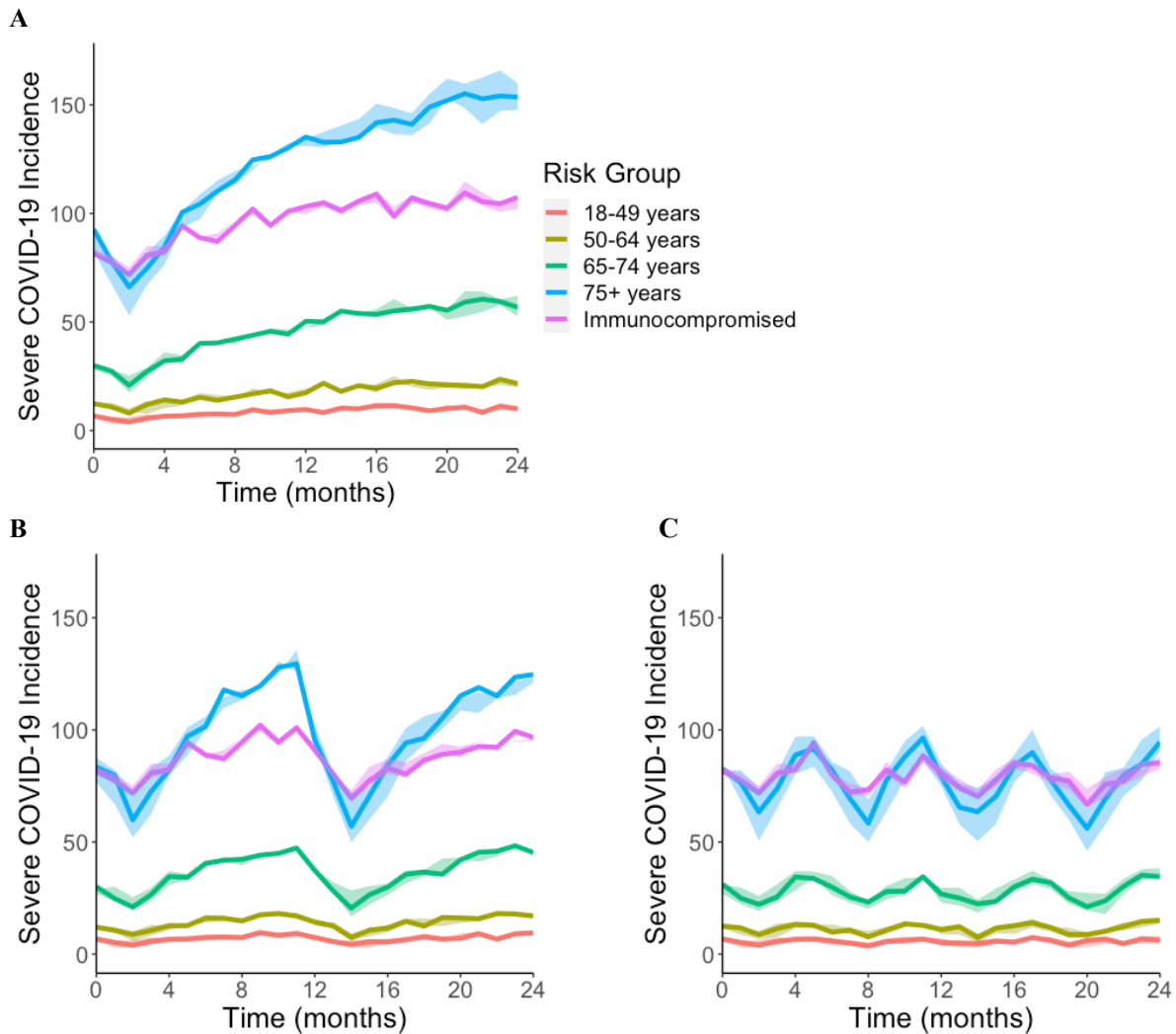


Figure S1: Monthly incidence of severe COVID-19 in four age groups and an immunocompromised population over a two-year simulation period with different frequencies of COVID-19 booster vaccination. We simulated three COVID-19 booster vaccine schedules with the mRNA bivalent dose: (A) One-time booster (total of 1 dose); (B) annual booster (total of 2 doses); (C) booster every 6 months (total of 4 doses). We estimated incidence of severe COVID-19 per 100,000 persons (y-axis) over time in months (x-axis), by age group and immunocompromised population in Panels A-C. We modeled the protection of a booster (administered in the population over a 3-month period) to restore vaccine-induced protection that waned over time based on published literature, which reduced severe COVID-19 cases. More frequent booster vaccination (panel B-C) reduced total severe COVID-19 cases compared to one-time bivalent booster (panel A), and this benefit was most pronounced in the oldest age groups. The 95% uncertainty intervals are based on 95% CI of published literature of waning data.