

Supplementary material

Supplementary Figures S1 – S4

Supplementary Tables S1 – S7

Supplementary Figure S1. Patient flow chart

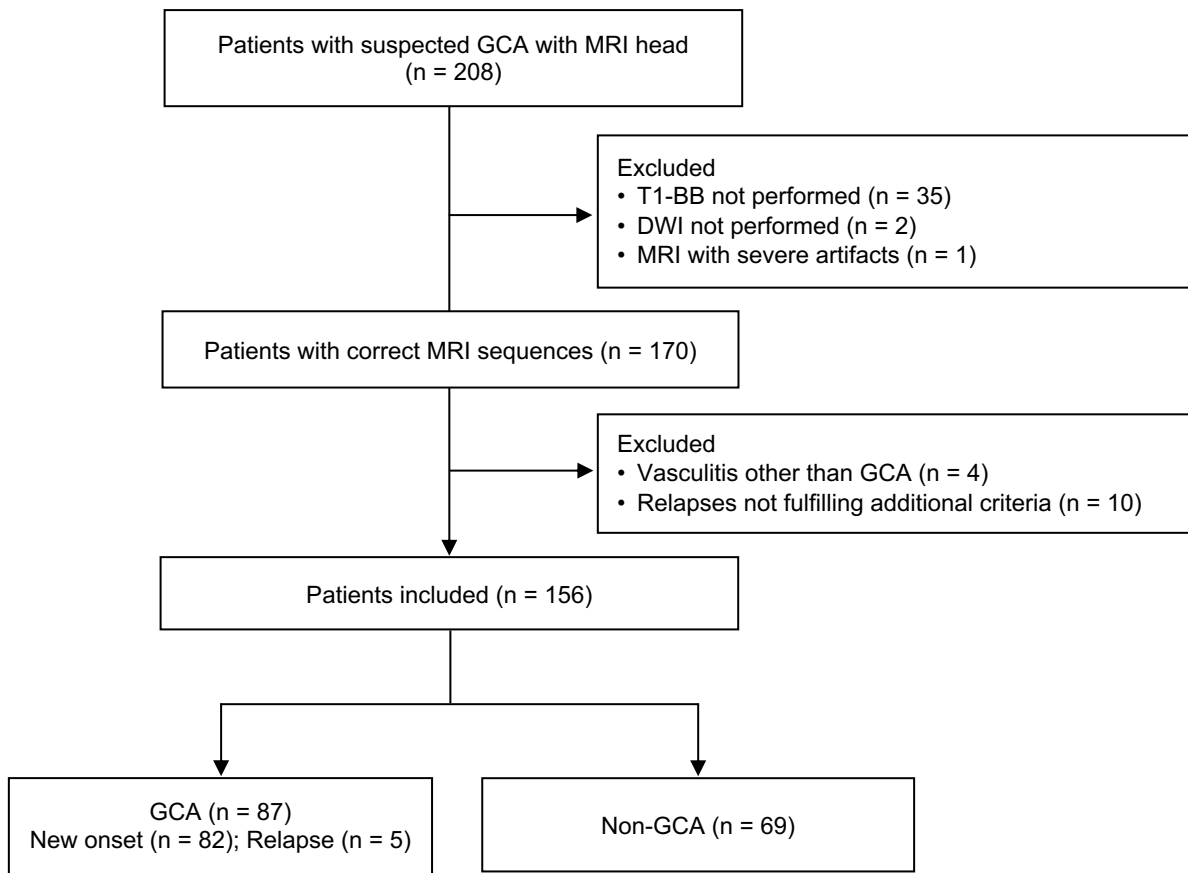


Figure legend S1: Vasculitis other than GCA: 1 x ANCA-associated vasculitis, 1x IgG4-related temporal arteritis, 1x drug-induced-vasculitis, 1x transient and self-limited vasculitis of unknown cause.

Supplementary Table S1. Details of MRI scanners, DWI sequences and parameters

Characteristics	N = 156 (n, %)
MRI scanner	
Siemens Prisma Fit	15 (9.6%)
Siemens Skyra Fit	40 (25.6%)
Siemens Verio	2 (1.3%)
Siemens Vida	99 (63.5%)
Receiving coil	
HeadNeck 20 channels	37 (23.7%)
HeadNeck 64 channels	61 (39.1%)
Unknown	58 (37.2%)
DWI method	
EPI, readout-segmented multi-shot (RESOLVE)	154 (98.7%)
EPI, single shot	2 (1.3%)
b-value	
1000 s/mm ²	156 (100%)
Slice thickness	
4 mm	154 (98.7%)
5 mm	2 (1.3%)
Repetition time (TR) (ms)	
Median (IQR)	5750 (4570, 5750)
Range	3500, 5750
Echo time (TE) (ms)	
Median (IQR)	61 (61, 67)
Range	55, 89
Number of excitations / averages	
1	154 (98.7%)
4	2 (1.3%)
Acquisition matrix	
128 x 128	2 (1.3%)
176 x 176	8 (5.1%)
192 x 192	146 (93.6%)
Field of view	
220 mm x 220 mm	154 (98.7%)
230 mm x 230 mm	2 (1.3%)
Voxel size	
1.15 x 1.15 x 4.00 mm	146 (93.6%)
1.25 x 1.25 x 4.00 mm	8 (5.1%)
1.80 x 1.80 x 5.00 mm	2 (1.3%)
Flip angle	
90	2 (1.3%)
180	154 (98.7%)
Slice spacing	
4.8 mm	153 (98.1%)
5.2 mm	1 (0.6%)
6.0 mm	2 (1.3%)

Table legend S1: EPI, echo-planar imaging; IQR, interquartile range

Supplementary Figure S2. Brightness setting for assessment of superficial cranial arteries in DWI

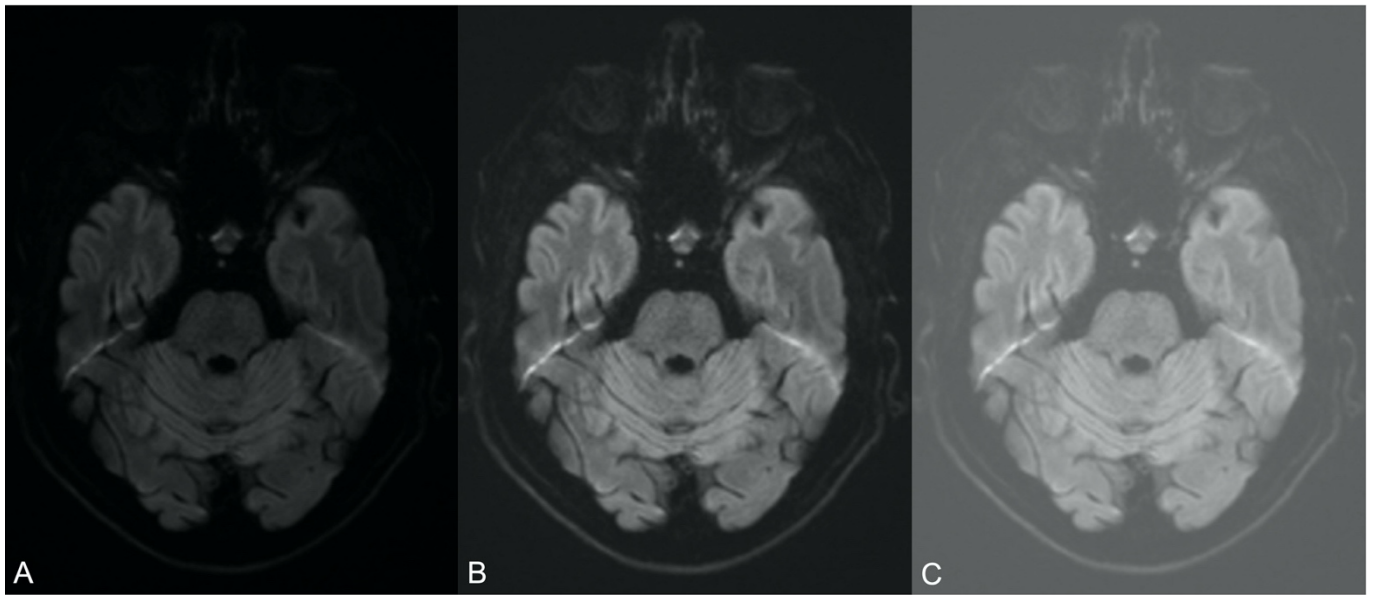


Figure legend S2: **A)** The brightness is too low: skin and air are not distinguishable; the subcutaneous fat is black. **B)** Optimal brightness: the skin can be distinguished from the surrounding air; the subcutaneous fat is dark gray and anatomical structures such as facial muscles are readily visible. **C)** Brightness is too high.

Supplementary Figure S3. T2-fs-scoring for superficial cranial arteries

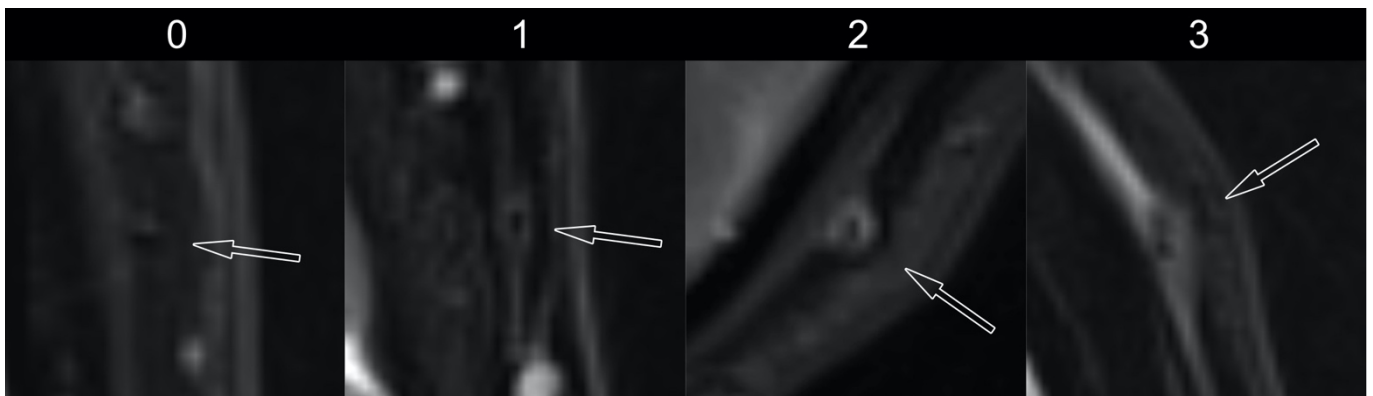


Figure legend S3: T2-fs-scoring (0 – 3): 0 = vessel wall not visible; 1= vessel wall visible; 2 = vessel wall prominently visible; 3 = vessel wall prominently visible and perivascular edema.

Supplementary Figure S4. DWI-scoring for superficial cranial arteries (version without arrows)

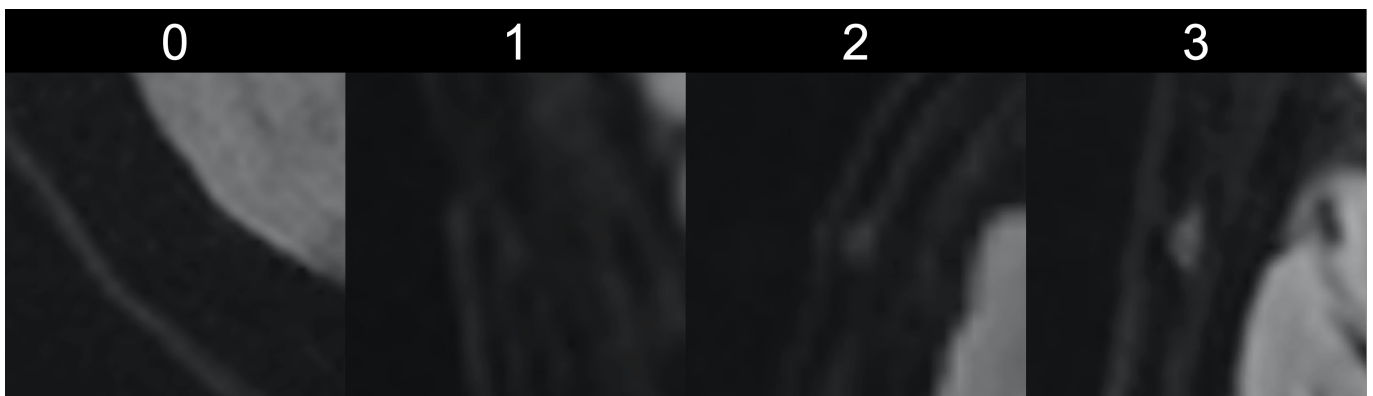


Figure legend S4: DWI-scoring (0 – 3): 0 = artery not visible; 1 = artery slightly visible; 2 = artery prominently visible; 3 = artery brightly visible.

Supplementary Table S2. Clinical diagnosis for patients without giant cell arteritis (total study population)

Expert Diagnosis at 6 months	n (%) (N = 69)
Polymyalgia rheumatica	23 (33.3%)
Primary headache	10 (14.5%)
Non-arteritic anterior ischemic optic neuropathy	9 (13.0%)
Polyarthritis	9 (13.0%)
Retinal artery occlusion	2 (2.9%)
Prominently visible temporal artery (physiological)	2 (2.9%)
Infection	2 (2.9%)
Lymphoma	2 (2.9%)
Sarcoidosis	2 (2.9%)
Other *	8 (11.6%)

* One each: atherosclerosis; calcium pyrophosphate deposition disease (CPPD); cryptogenic organizing pneumonia; hypertensive urgency; idiopathic abducens palsy; late-onset spondyloarthritis; stroke; unclear systemic inflammation with spontaneous resolution

Supplementary Table S3. Correct diagnosis of DWI-1, DWI-2 and T1-BB methods compared to the reference diagnosis

Total study population *				
	Total (N = 156)	No GCA (N = 69)	GCA (N = 87)	Correct diagnosis (N = 156)
DWI-1				111 (71.2%, 63.6 - 77.7%)
No Vasculitis	28 (17.9%, 12.7 - 24.7%)	26 (37.7%, 27.2 - 49.5%)	2 (2.3%, 0.6 - 8.0%)	
Vasculitis	128 (82.1%, 75.3 - 87.3%)	43 (62.3%, 50.5 - 72.8%)	85 (97.7%, 92.0 - 99.4%)	
DWI-2				131 (84.0%, 77.4 - 88.9%)
No Vasculitis	86 (55.1%, 47.3 - 62.7%)	65 (94.2%, 86.0 - 97.7%)	21 (24.1%, 16.4 - 34.1%)	
Vasculitis	70 (44.9%, 37.3 - 52.7%)	4 (5.8%, 2.3 - 14.0%)	66 (75.9%, 65.9 - 83.6%)	
T1-BB				138 (88.5%, 82.5 - 92.6%)
No Vasculitis	71 (45.5%, 37.9 - 53.3%)	61 (88.4%, 78.8 - 94.0%)	10 (11.5%, 6.4 - 19.9%)	
Vasculitis	85 (54.5%, 46.7 - 62.1%)	8 (11.6%, 6.0 - 21.2%)	77 (88.5%, 80.1 - 93.6%)	
Patients with cranial manifestations *				
	Total (N = 128)	No GCA (N = 53)	GCA (N = 75)	Correct diagnosis (N = 128)
DWI-1				92 (71.9%, 63.5 - 78.9%)
No Vasculitis	21 (16.4%, 11.0 - 23.8%)	19 (35.8%, 24.3 - 49.3%)	2 (2.7%, 0.7 - 9.2%)	
Vasculitis	107 (83.6%, 76.2 - 89.0%)	34 (64.2%, 50.7 - 75.7%)	73 (97.3%, 90.8 - 99.3%)	
DWI-2				111 (86.7%, 79.8 - 91.5%)
No Vasculitis	64 (50.0%, 41.5 - 58.5%)	50 (94.3%, 84.6 - 98.1%)	14 (18.7%, 11.5 - 28.9%)	
Vasculitis	64 (50.0%, 41.5 - 58.5%)	3 (5.7%, 1.9 - 15.4%)	61 (81.3%, 71.1 - 88.5%)	
T1-BB				118 (92.2%, 86.2 - 95.7%)
No Vasculitis	53 (41.4%, 33.2 - 50.1%)	48 (90.6%, 79.7 - 95.9%)	5 (6.7%, 2.9 - 14.7%)	
Vasculitis	75 (58.6%, 49.9 - 66.8%)	5 (9.4%, 4.1 - 20.3%)	70 (93.3%, 85.3 - 97.1%)	

Table legend S3: *, n (%; 95%-Confidence interval); DWI-1, diffusion weighted imaging with ≥ 1 slice; DWI-2, diffusion weighted imaging with ≥ 2 slices; T1-BB, T1-black-blood.

Supplementary Table S4. Comparison of DWI-2 with T1-BB on a segment level (total study population)

	<i>N</i> *	Total <i>n</i> (%)	<i>N</i> *	No GCA <i>n</i> (%)	<i>N</i> *	GCA <i>n</i> (%)	P-value
Common superficial temporal arteries	254		121		133		<0.001
DWI-2 and T1-BB normal		173 (68.1%)		117 (96.7%)		56 (42.1%)	
DWI-2 pathological, T1-BB normal		1 (0.4%)		0 (0.0%)		1 (0.8%)	
DWI-2 normal, T1-BB pathological		32 (12.6%)		3 (2.5%)		29 (21.8%)	
DWI-2 and T1-BB pathological		48 (18.9%)		1 (0.8%)		47 (35.3%)	
Temporal arteries, frontal branches	309		137		172		<0.001
DWI-2 and T1-BB normal		173 (56.0%)		128 (93.4%)		45 (26.2%)	
DWI-2 pathological, T1-BB normal		2 (0.6%)		2 (1.5%)		0 (0.0%)	
DWI-2 normal, T1-BB pathological		27 (8.7%)		4 (2.9%)		23 (13.4%)	
DWI-2 and T1-BB pathological		107 (34.6%)		3 (2.2%)		104 (60.5%)	
Temporal arteries, parietal branches	295		134		161		<0.001
DWI-2 and T1-BB normal		198 (67.1%)		131 (97.8%)		67 (41.6%)	
DWI-2 pathological, T1-BB normal		3 (1.0%)		0 (0.0%)		3 (1.9%)	
DWI-2 normal, T1-BB pathological		27 (9.2%)		3 (2.2%)		24 (14.9%)	
DWI-2 and T1-BB pathological		67 (22.7%)		0 (0.0%)		67 (41.6%)	
Posterior auricular arteries	78		41		37		<0.001
DWI-2 and T1-BB normal		62 (79.5%)		40 (97.6%)		22 (59.5%)	
DWI-2 pathological, T1-BB normal		0 (0.0%)		0 (0.0%)		0 (0.0%)	
DWI-2 normal, T1-BB pathological		12 (15.4%)		1 (2.4%)		11 (29.7%)	
DWI-2 and T1-BB pathological		4 (5.1%)		0 (0.0%)		4 (10.8%)	
Occipital arteries	308		136		172		<0.001
DWI-2 and T1-BB normal		199 (64.6%)		131 (96.3%)		68 (39.5%)	
DWI-2 pathological, T1-BB normal		2 (0.6%)		0 (0.0%)		2 (1.2%)	
DWI-2 normal, T1-BB pathological		31 (10.1%)		2 (1.5%)		29 (16.9%)	
DWI-2 and T1-BB pathological		76 (24.7%)		3 (2.2%)		73 (42.4%)	
All segments combined	1244		569		675		<0.001
DWI-2 and T1-BB normal		805 (64.7%)		547 (96.1%)		258 (38.2%)	
DWI-2 pathological, T1-BB normal		8 (0.6%)		2 (0.4%)		6 (0.9%)	
DWI-2 normal, T1-BB pathological		129 (10.4%)		13 (2.3%)		116 (17.2%)	
DWI-2 and T1-BB pathological		302 (24.3%)		7 (1.2%)		295 (43.7%)	

Table legend S4: * Number of non-missing observations; DWI-2, diffusion weighted imaging with ≥ 2 slices; T1-BB, T1-black-blood.

Supplementary Table S5. Sensitivity and specificity of DWI-2 with T1-BB as reference (total study population)

	Pathological DWI-2 / Pathological T1-BB	Sensitivity (95% CI)	Normal DWI-2 / Normal T1-BB	Specificity (95% CI)
Left common superficial TA	20/38	52.6% (37.3 - 67.5%)	86/86	100.0% (95.7 - 100.0%)
Right common superficial TA	28/42	66.7% (51.6 - 79.0%)	87/88	98.9% (93.8 - 99.8%)
Left TA frontal branch	49/62	79.0% (67.4 - 87.3%)	90/91	98.9% (94.0 - 99.8%)
Right TA frontal branch	58/72	80.6% (70.0 - 88.0%)	83/84	98.8% (93.6 - 99.8%)
Left TA parietal branch	33/43	76.7% (62.3 - 86.8%)	100/102	98.0% (93.1 - 99.5%)
Right TA parietal branch	34/51	66.7% (53.0 - 78.0%)	98/99	99.0% (94.5 - 99.8%)
Left post. auricular artery	1/7	14.3% (2.6 - 51.3%)	29/29	100.0% (88.3 - 100.0%)
Right post. auricular artery	3/9	33.3% (12.1 - 64.6%)	33/33	100.0% (89.6 - 100.0%)
Left occipital artery	36/50	72.0% (58.3 - 82.5%)	103/103	100.0% (96.4 - 100.0%)
Right occipital artery	40/57	70.2% (57.3 to 80.5%)	96/98	98.0% (92.9 - 99.4%)

Table legend S5: DWI-2, diffusion weighted imaging with ≥ 2 slices; T1-BB, T1-black-blood; TA, temporal artery.

Supplementary Table S6. Binary agreement between readers for DWI-2 and T1-BB for a subset of 20 patients

	Reader 2 – No Vasculitis (Score 0 or 1) n (% , 95% CI)	Reader 2 – Vasculitis (Score 2 or 3) n (% , 95% CI)	Agreement n (% , 95% CI)	Cohen's kappa (95% CI)
Patient level (Reader 1)				
DWI-2			20 (100%, 83.9 - 100%)	1.00 (not estimable)
No Vasculitis	9 (100%, 70.1 - 100%)	0 (0.0%, 0.0 - 25.9%)		
Vasculitis	0 (0.0%, 0.0 - 29.9%)	11 (100%, 74.1 - 100%)		
T1-BB			18 (90.0%, 69.9 - 97.2%)	0.78 (0.50 - 1.00)
No Vasculitis	6 (75.0%, 40.9 - 92.9%)	0 (0.0%, 0.0 - 24.2%)		
Vasculitis	2 (25.0%, 7.1 - 59.1%)	12 (100%, 75.8 - 100%)		
Segment level (Reader 1)				
DWI-2 (all segments)			156 (93.4%, 88.6 - 96.3%)	0.85 (0.76 - 0.93)
Score 0 or 1	108 (95.6%, 90.1 - 98.1%)	6 (11.1%, 5.2 - 22.2%)		
Score 2 or 3	5 (4.4%, 1.9 - 9.9%)	48 (88.9%, 77.8 - 94.8%)		
T1-BB (all segments)			146 (89.6%, 83.9 - 93.4%)	0.79 (0.69 - 0.88)
Score 0 or 1	87 (87.9%, 80.0 - 92.9%)	5 (7.8%, 3.4 - 17.0%)		
Score 2 or 3	12 (12.1%, 7.1 - 20.0%)	59 (92.2%, 83.0 - 96.6%)		

Table legend S6: CI, confidence interval; DWI-2, diffusion weighted imaging with ≥ 2 slices; T1-BB, T1-black-blood.

Supplementary Table S7. Correlation of DWI-1 and T2-fs on a segment level

	T2-fs score			
	0 (N = 77)	1 (N = 663)	2 (N = 279)	3 (N = 220)
DWI-1 score - n (%)				
0	48 (62.3%)	64 (9.7%)	0 (0.0%)	0 (0.0%)
1	27 (35.1%)	503 (75.9%)	99 (35.5%)	4 (1.8%)
2	1 (1.3%)	95 (14.3%)	160 (57.3%)	105 (47.7%)
3	0 (0.0%)	1 (0.2%)	17 (6.1%)	107 (48.6%)
missing	1 (1.3%)	0 (0.0%)	3 (1.1%)	4 (1.8%)

Table legend S7: Based on 1239 segments from 152 patients (T2-fs was missing for 4 patients). Spearman's rho: 0.74 (95%-confidence interval: 0.71 – 0.76). DWI-1, diffusion weighted imaging with ≥ 1 slice.