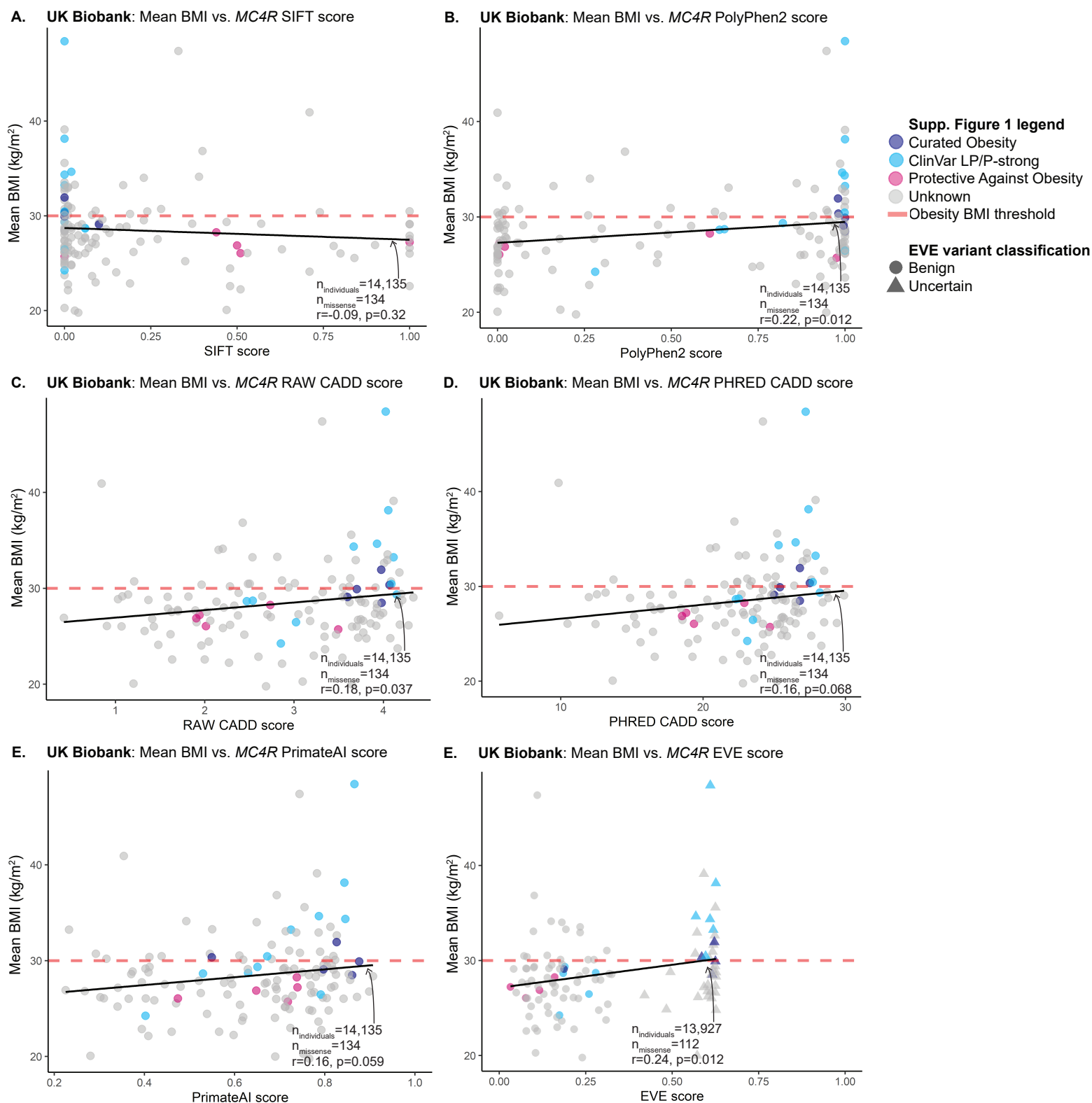
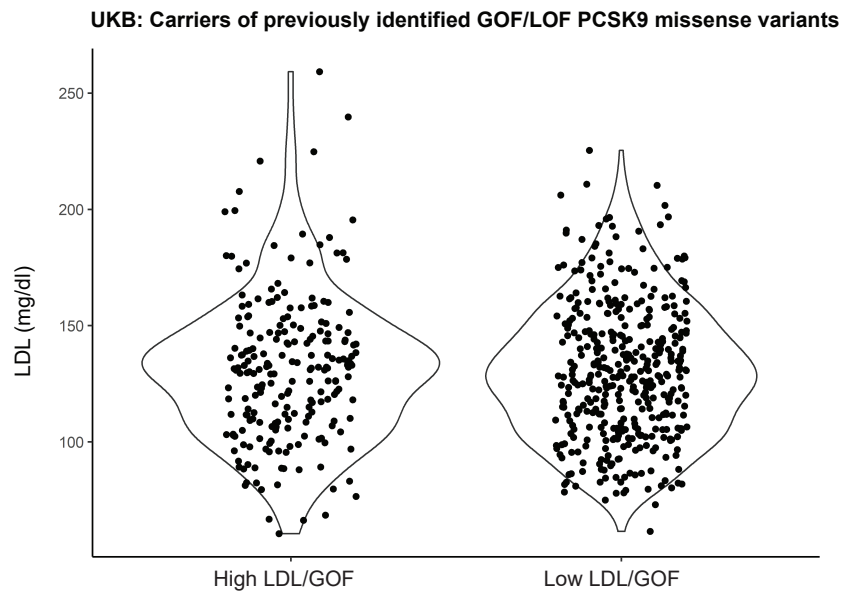


Supplemental Figure 1



Supplemental Figure 1: Additional variant pathogenicity predictors do not predict mean phenotype as accurately as ESM1b. Phenotype correlations were also compared against additional variant pathogenicity prediction methods (A-SIFT, B-PolyPhen2, C-RAW CADD, D-PRED CADD, E-PrimateAI, F-EVE). These methods have lower Pearson correlations with mean BMI compared to ESM1b and do not differentiate between GOF and LOF missense variants in *MC4R*. EVE also does not have full coverage of all *MC4R* missense variants.

Supplemental Figure 2



Supplemental Figure 2: Carriers of GOF/LOF *PCSK9* missense variants do not have significantly different LDL levels in UKB. Carriers of *PCSK9* GOF (n=216) and LOF (n=398) missense variants were identified. After adjusting for age, sex, and 1st 10 PCs, carrying a GOF or LOF variant was not significantly associated with LDL levels within these carriers.