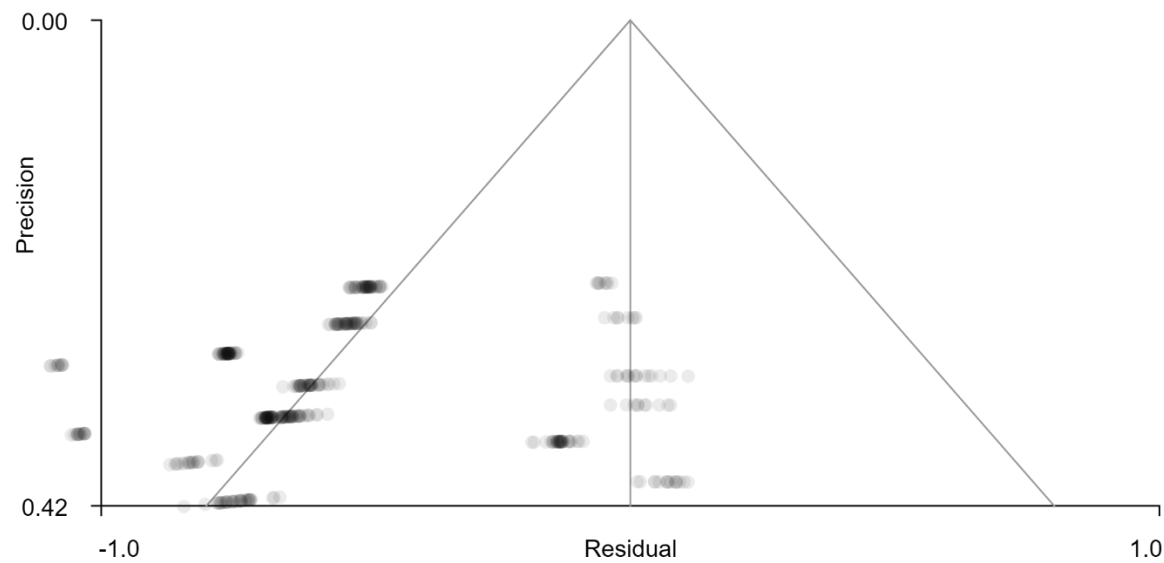


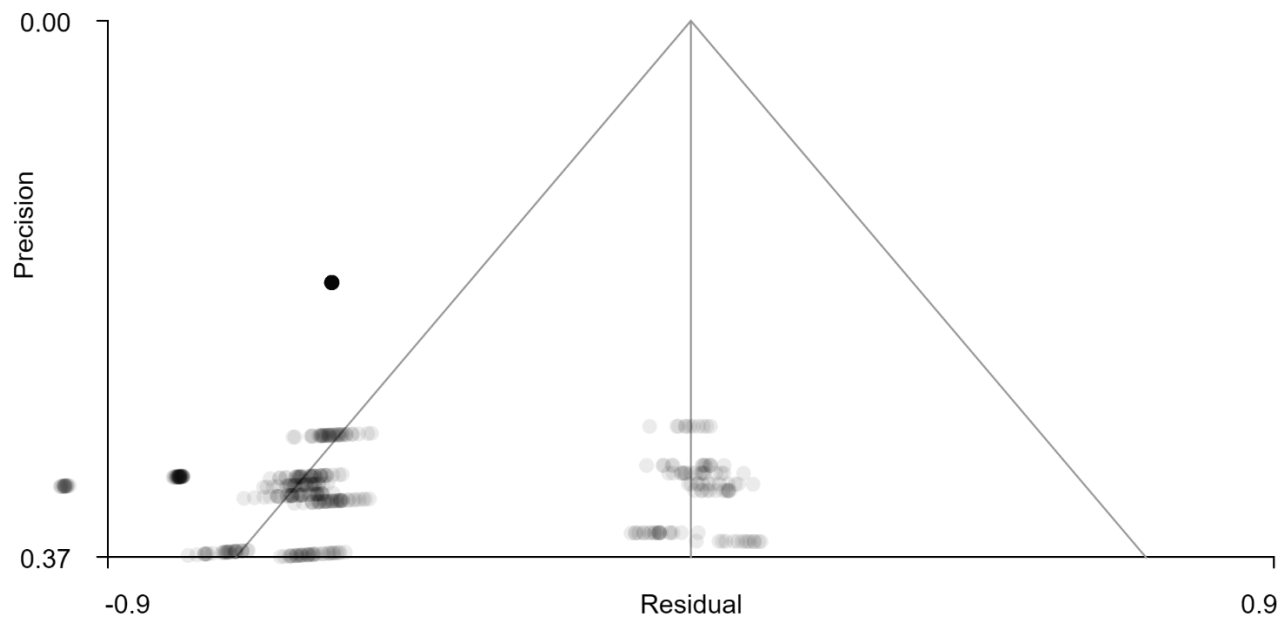
Supplementary

Meta-regression

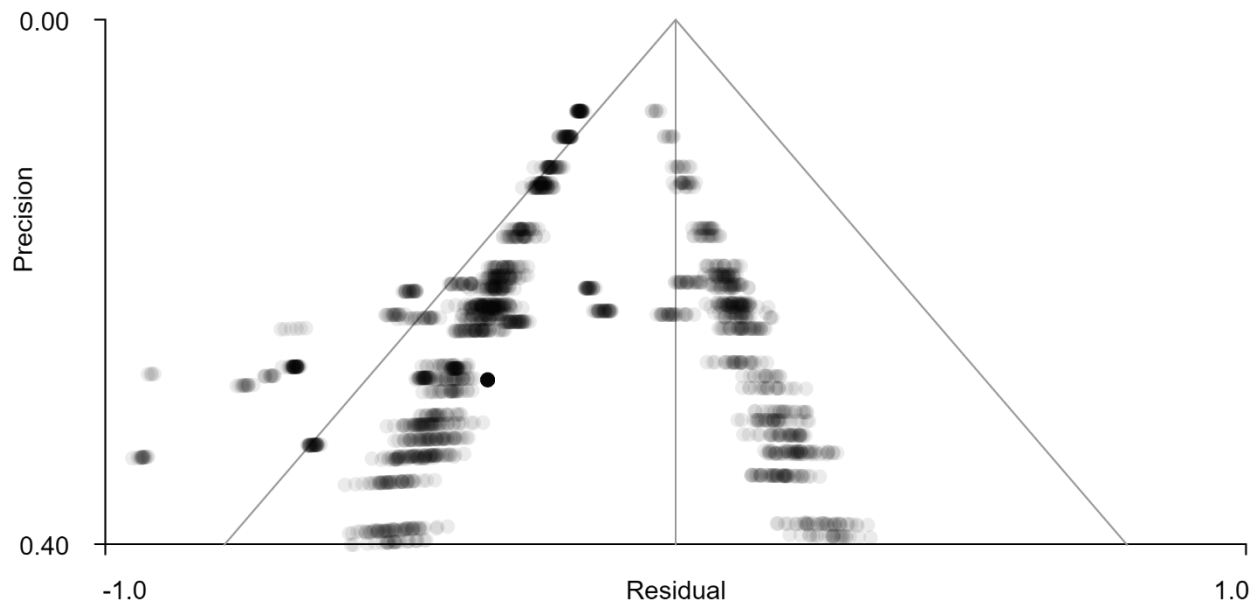
We performed exploratory meta-regression analyses for age and gender effects across all clusters identified in the meta-analysis. In line with (Liu et al., 2022) potential confounding effects of demographic as well as clinical variables were examined in a meta-regression. Although we report the results for $n \geq 8$ (Glaucoma studies), (Radua & Mataix-Cols, 2009) recommends variables reported in $n \geq 9$ studies for a standard analysis.



Supplementary Figure 1 Funnel plot for Glaucoma meta-analysis (L Putamen, MNI = -28, 2, 2)

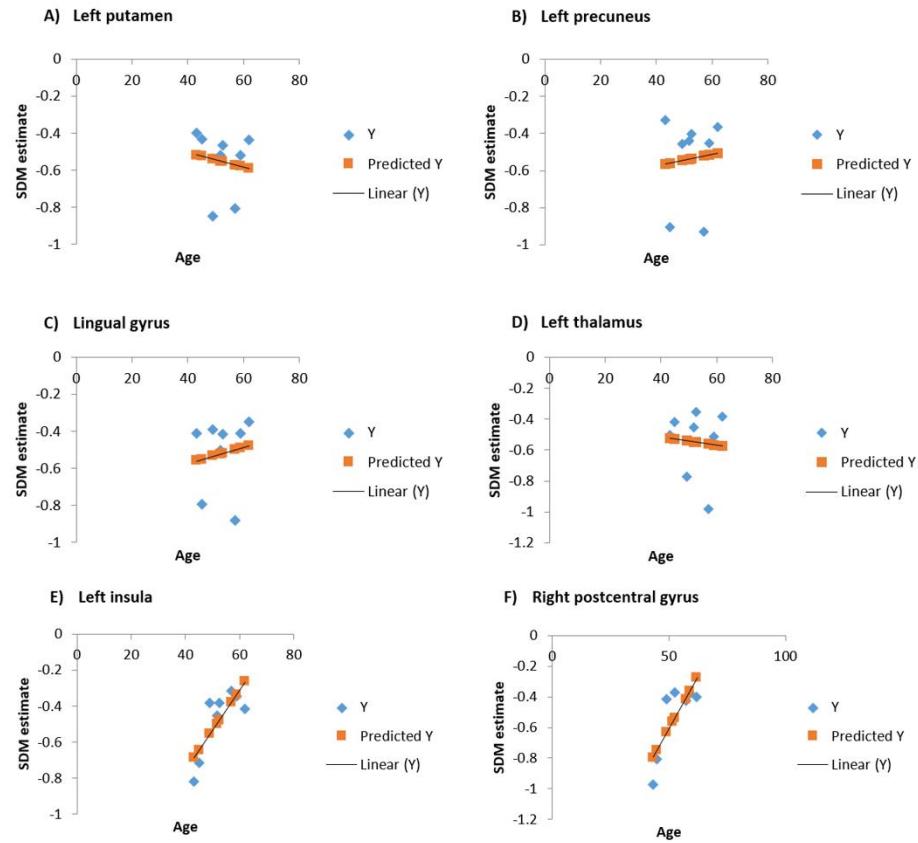


Supplementary Figure 2 Funnel plot for GAD meta-analysis (L rolandic operculum/Insula, MNI = -44, -8, 8)

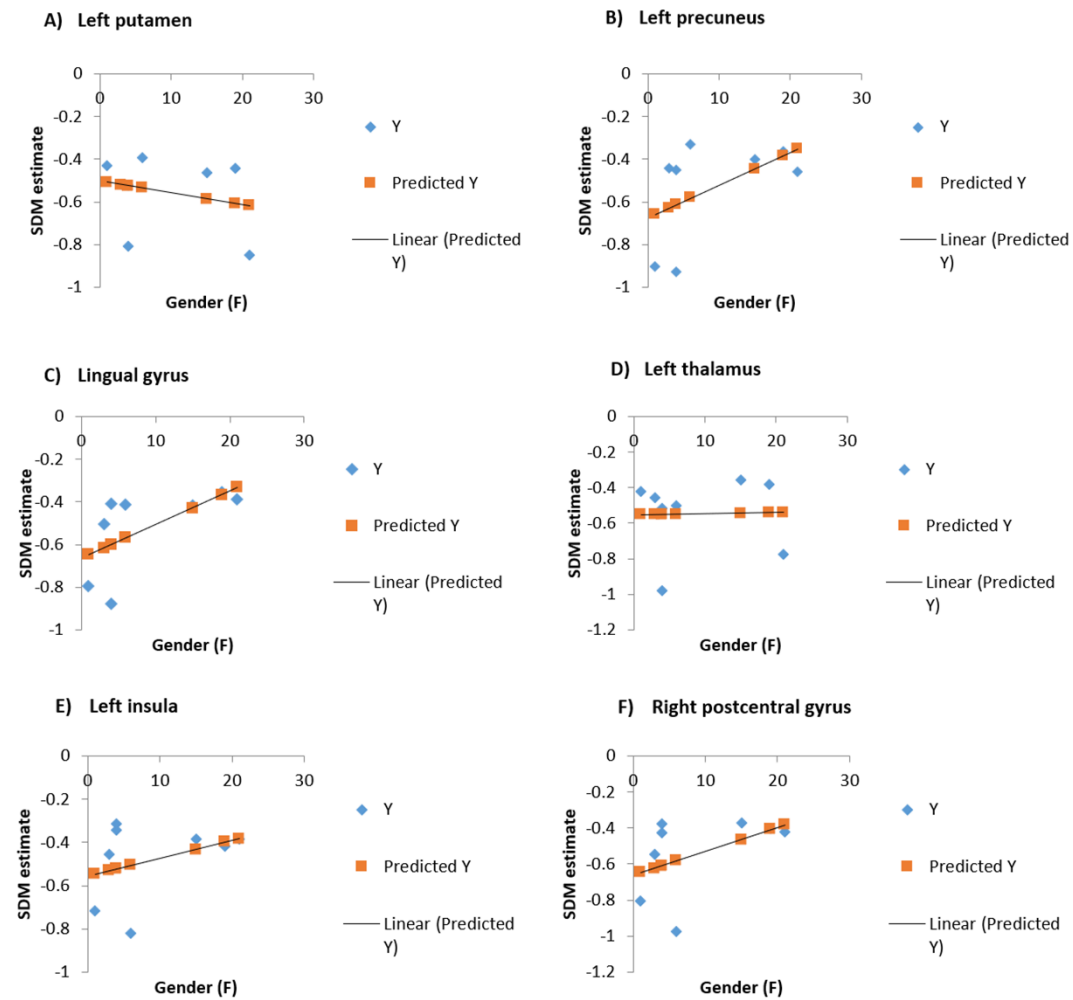


Supplementary Figure 3 Funnel plot for MDD meta-analysis (Superior frontal gyrus, MNI = 4, 40, -10)

Meta regression analysis



Supplementary Figure 4 Meta regression analysis between age and the meta-analytic results of glaucoma



Supplementary Fig 5 Meta-regression between gender and the meta-analytic results of glaucoma. F, Females