

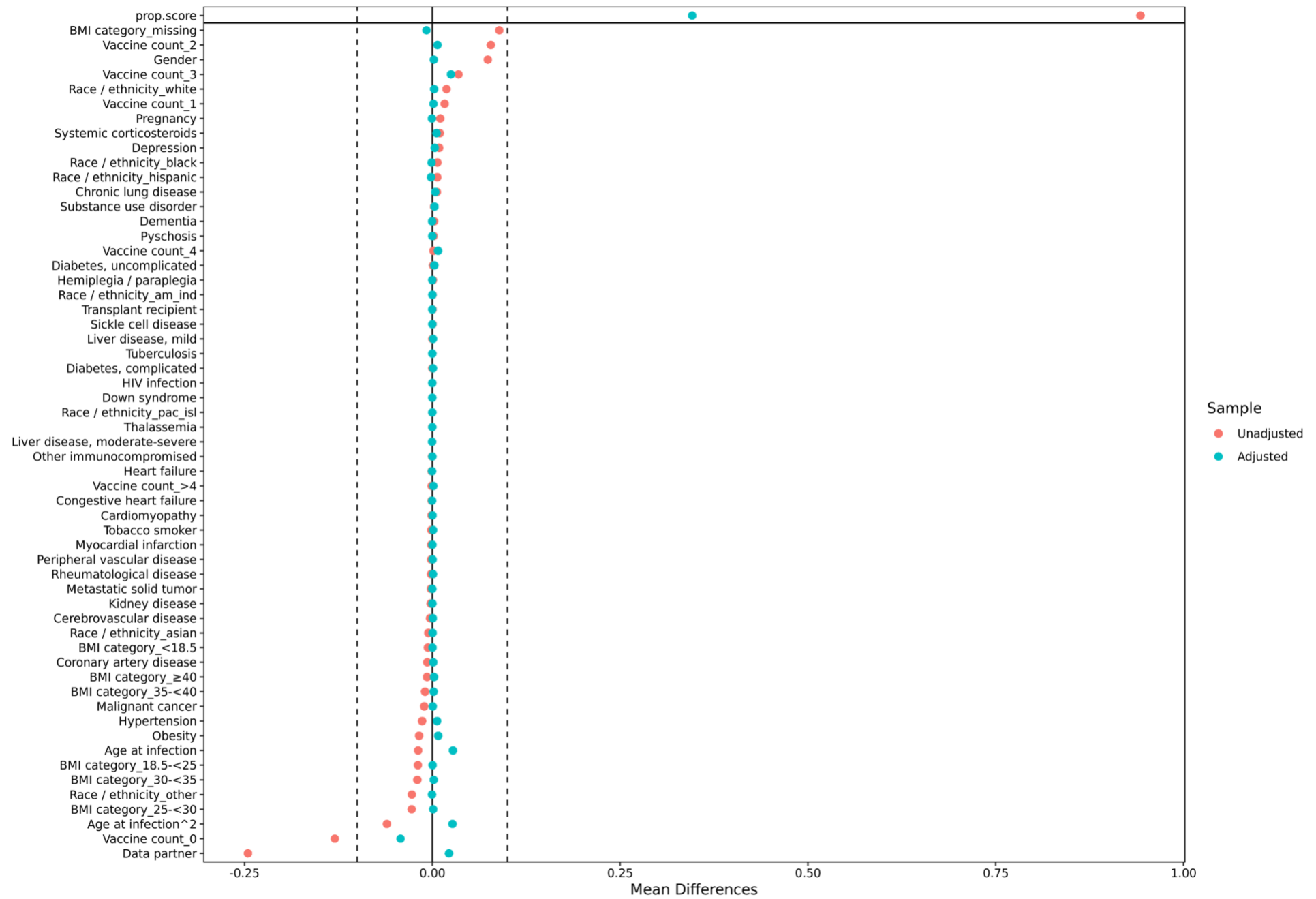
Supplemental material for “Influence of Prior SARS-CoV-2 Infection on COVID-19 Severity: Evidence from the National COVID Cohort Collaborative”

I. Comorbidities used in inverse probability of treatment weight calculations

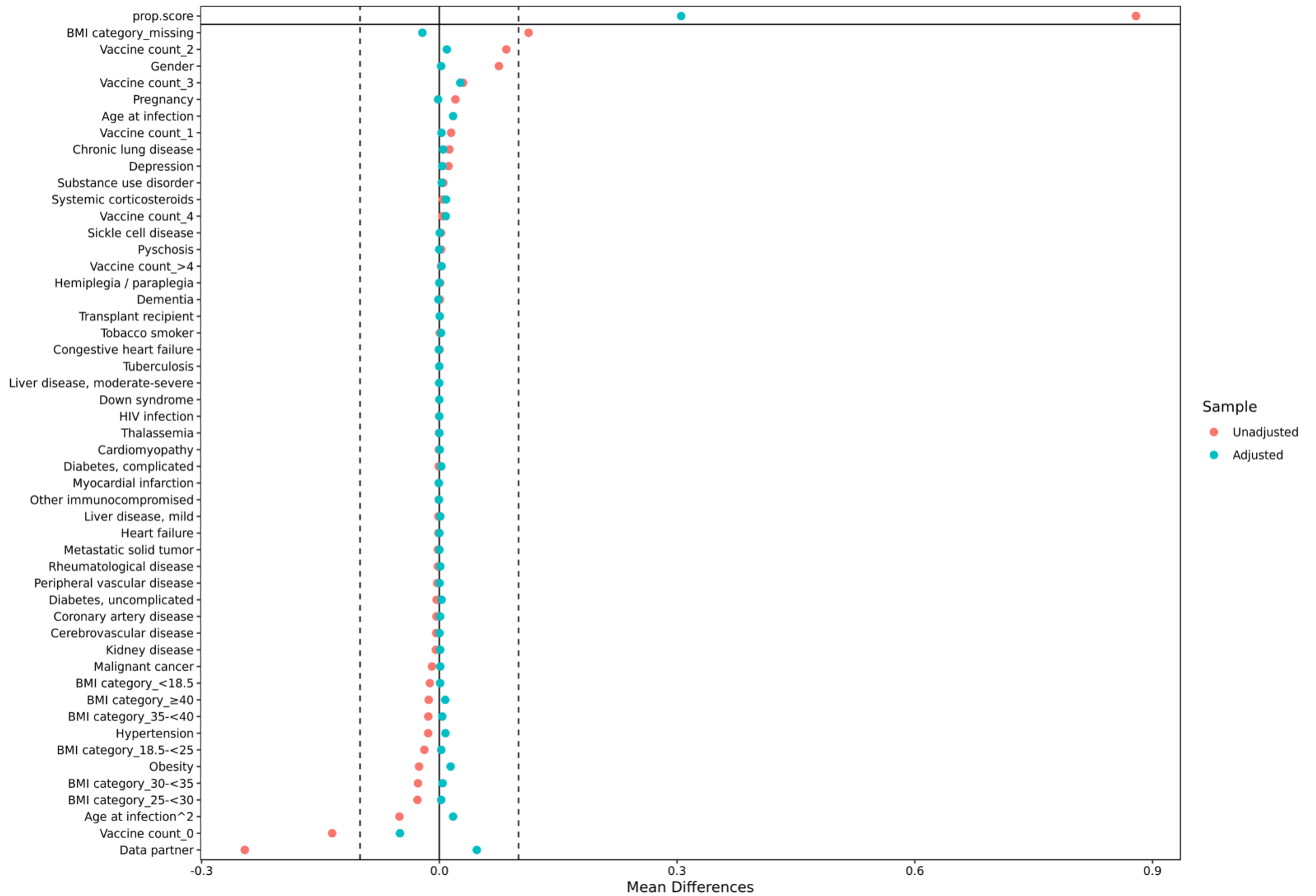
Tuberculosis, mild liver disease, moderate-to-severe liver disease, thalassemia, rheumatological disease, dementia, congestive heart failure, substance use disorder, Down syndrome, kidney disease, malignant cancer, uncomplicated diabetes, complicated diabetes, cerebrovascular disease, peripheral vascular disease, pregnancy, hemiplegia / paraplegia, psychosis, obesity, coronary artery disease, systemic corticosteroids, depression, metastatic solid tumor cancers, HIV infection, chronic lung disease, sickle cell disease, myocardial infarction, cardiomyopathies, hypertension, other immunocompromised status, tobacco smoking, and solid organ / blood stem cell transplant.

II. Love plots of covariate balance

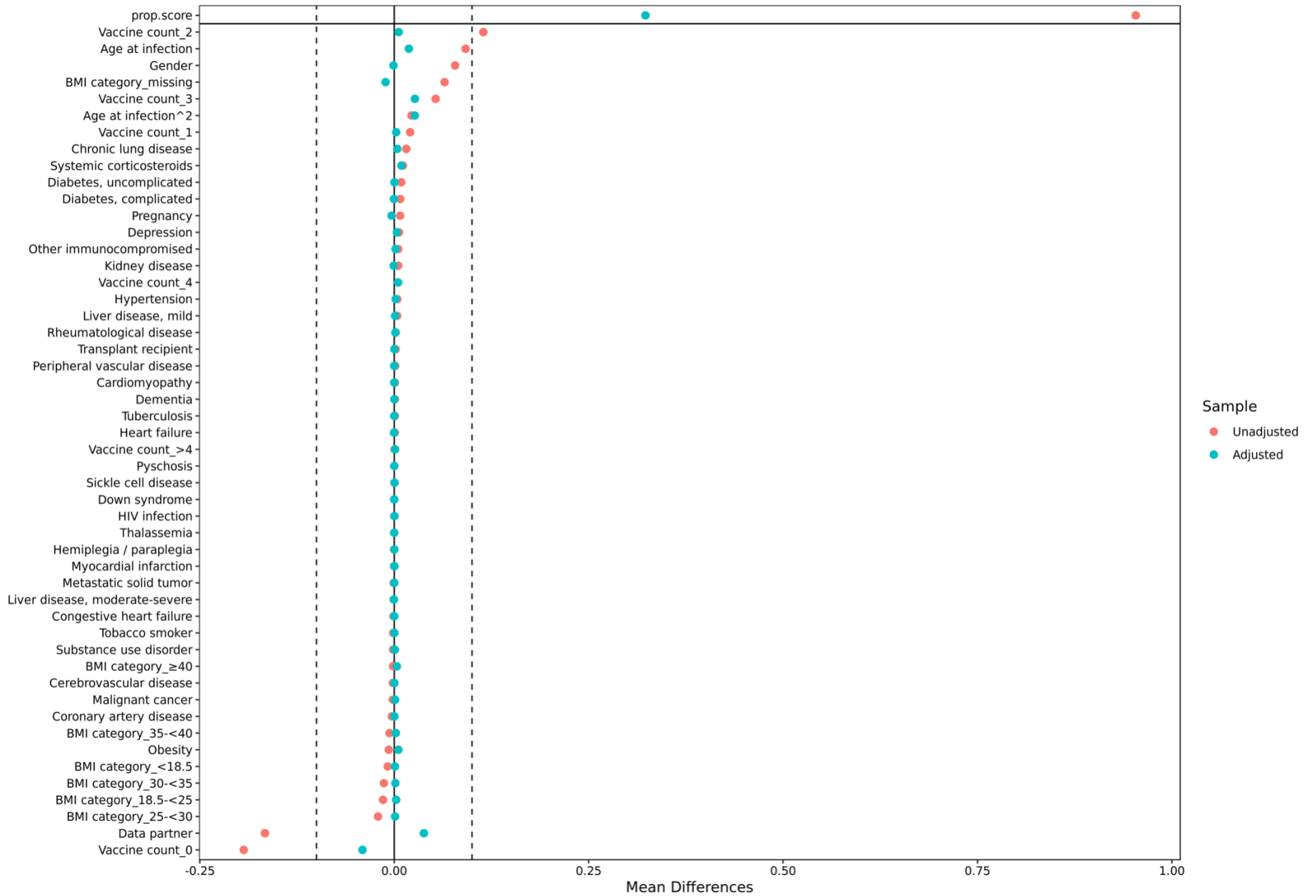
Covariate balance: Full cohort



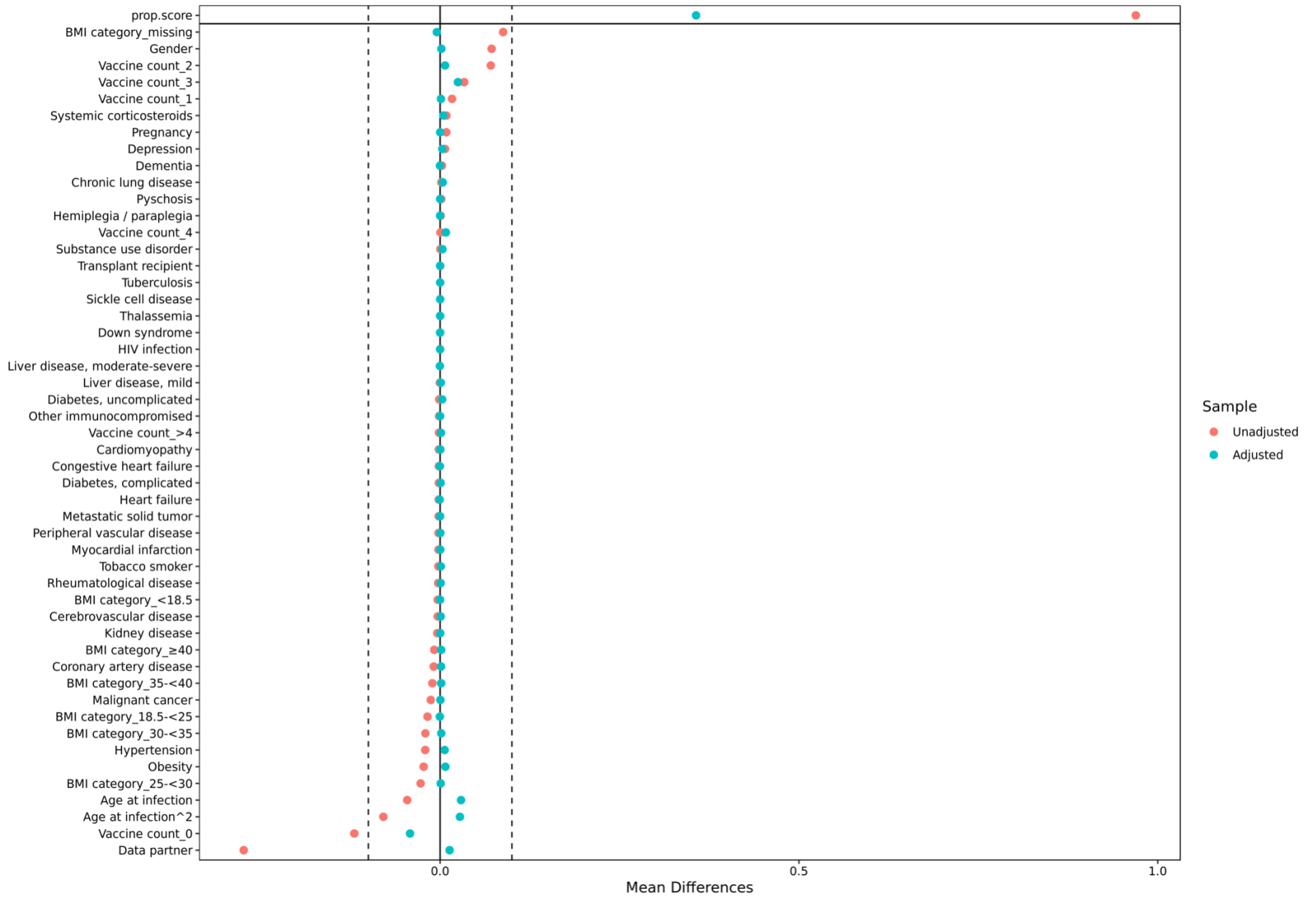
Covariate balance: Black / African American



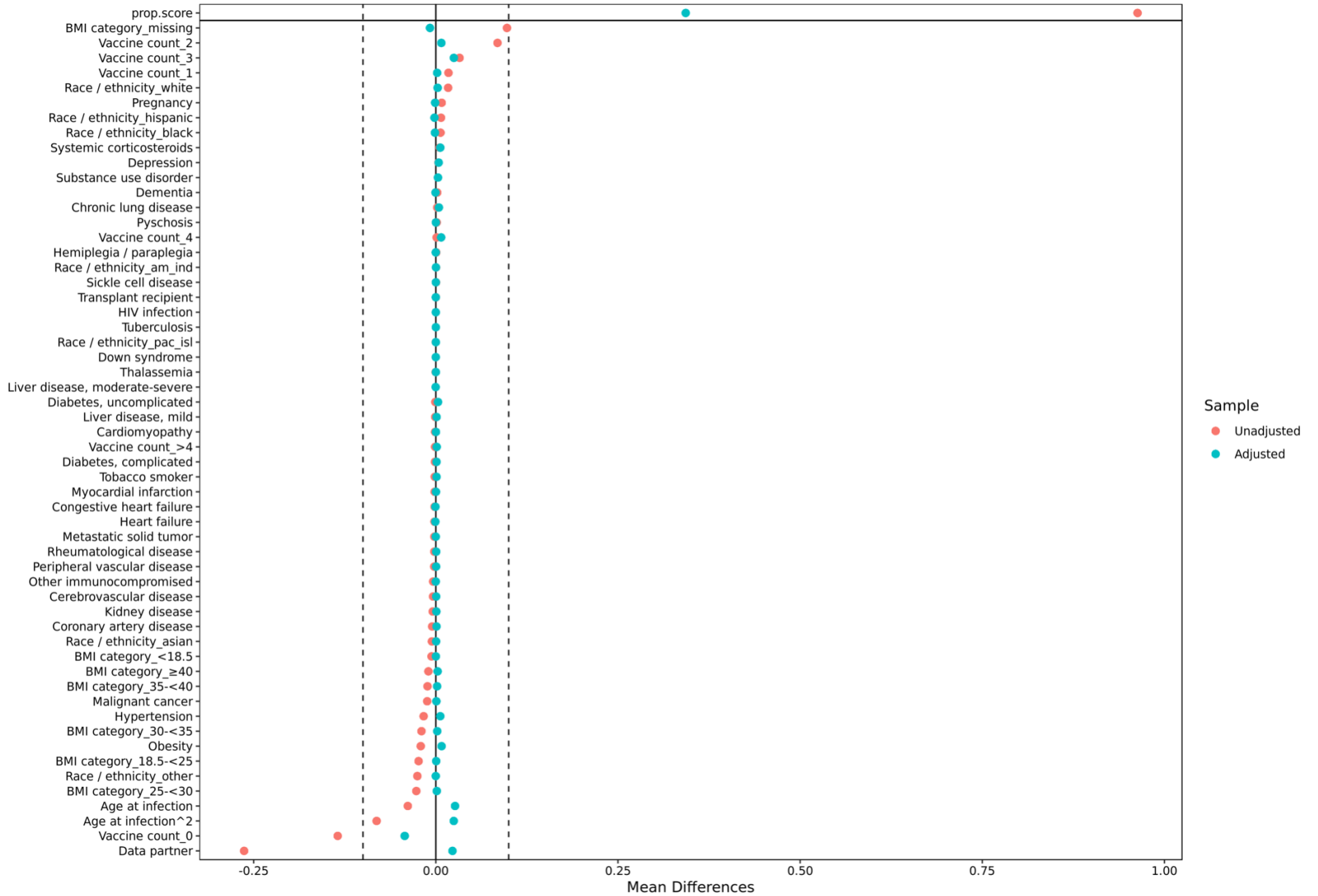
Covariate balance: Hispanic



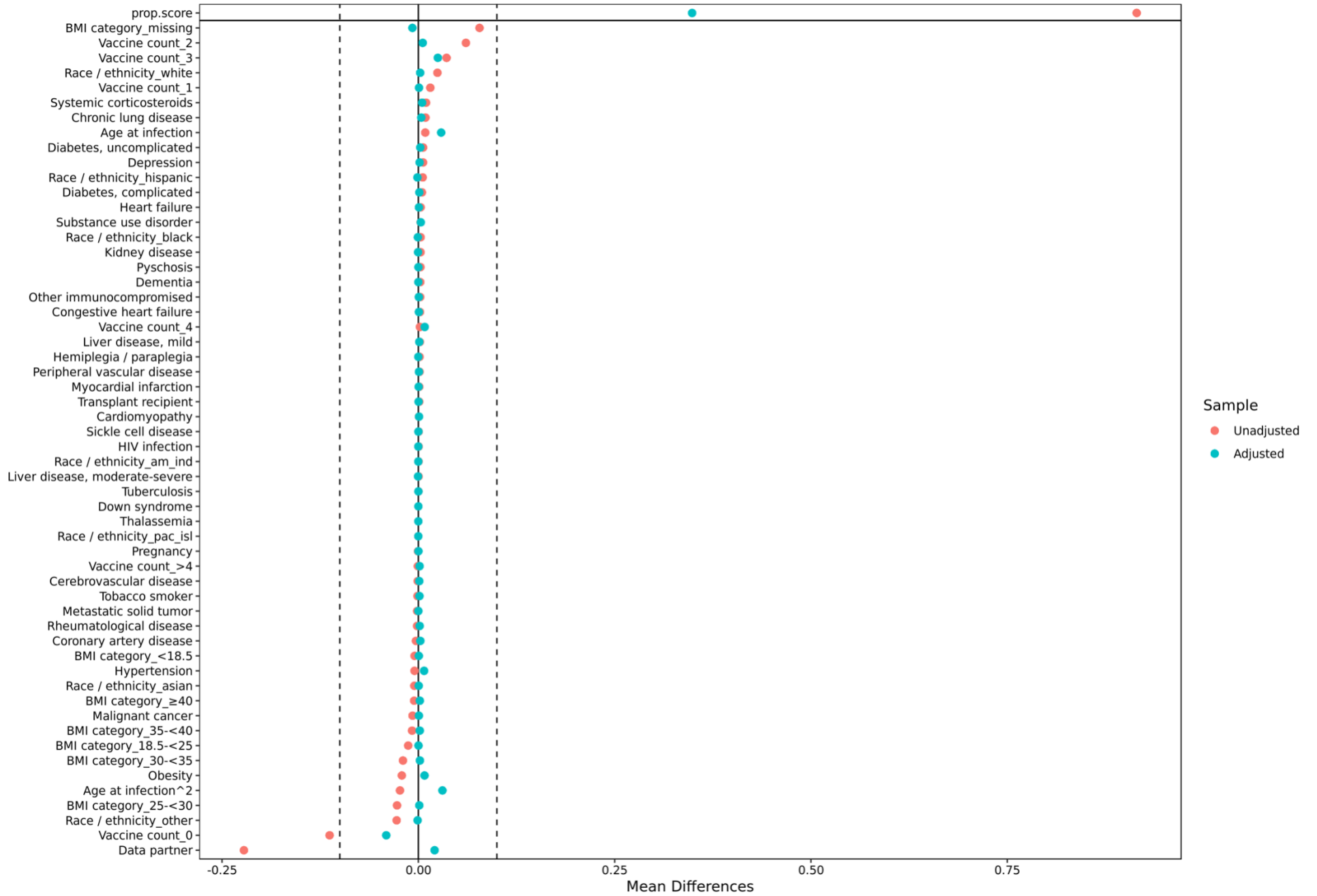
Covariate balance: White



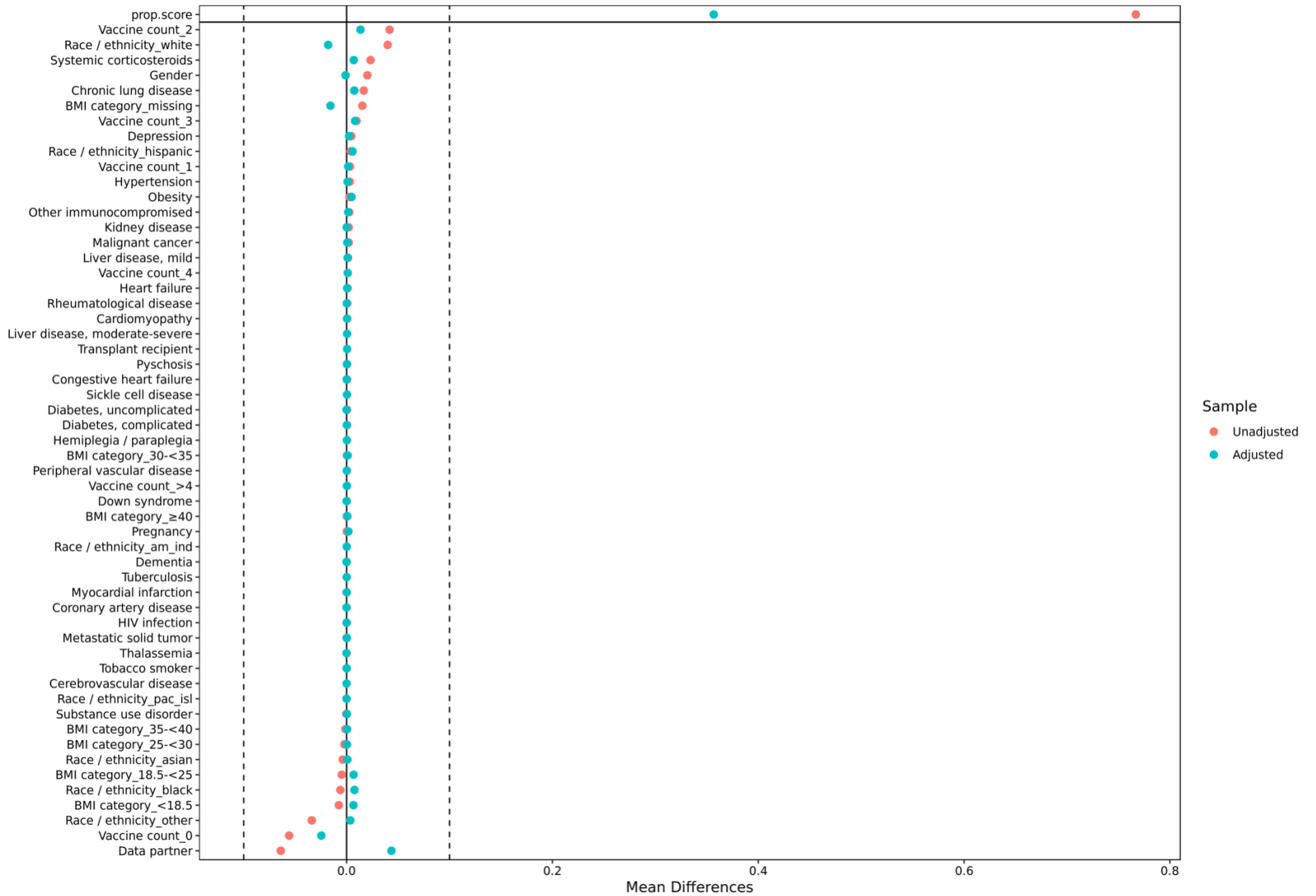
Covariate balance: Female



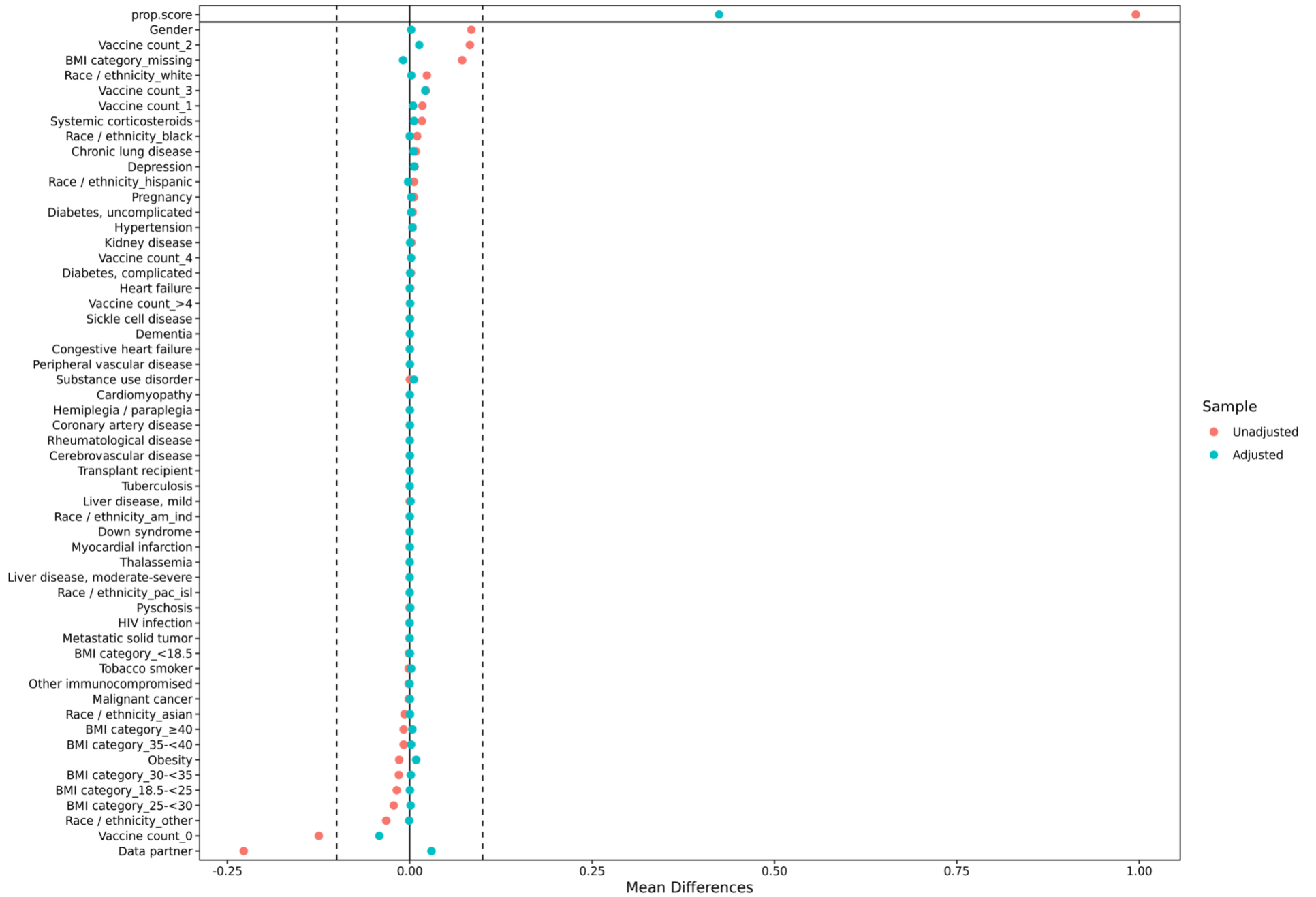
Covariate balance: Male



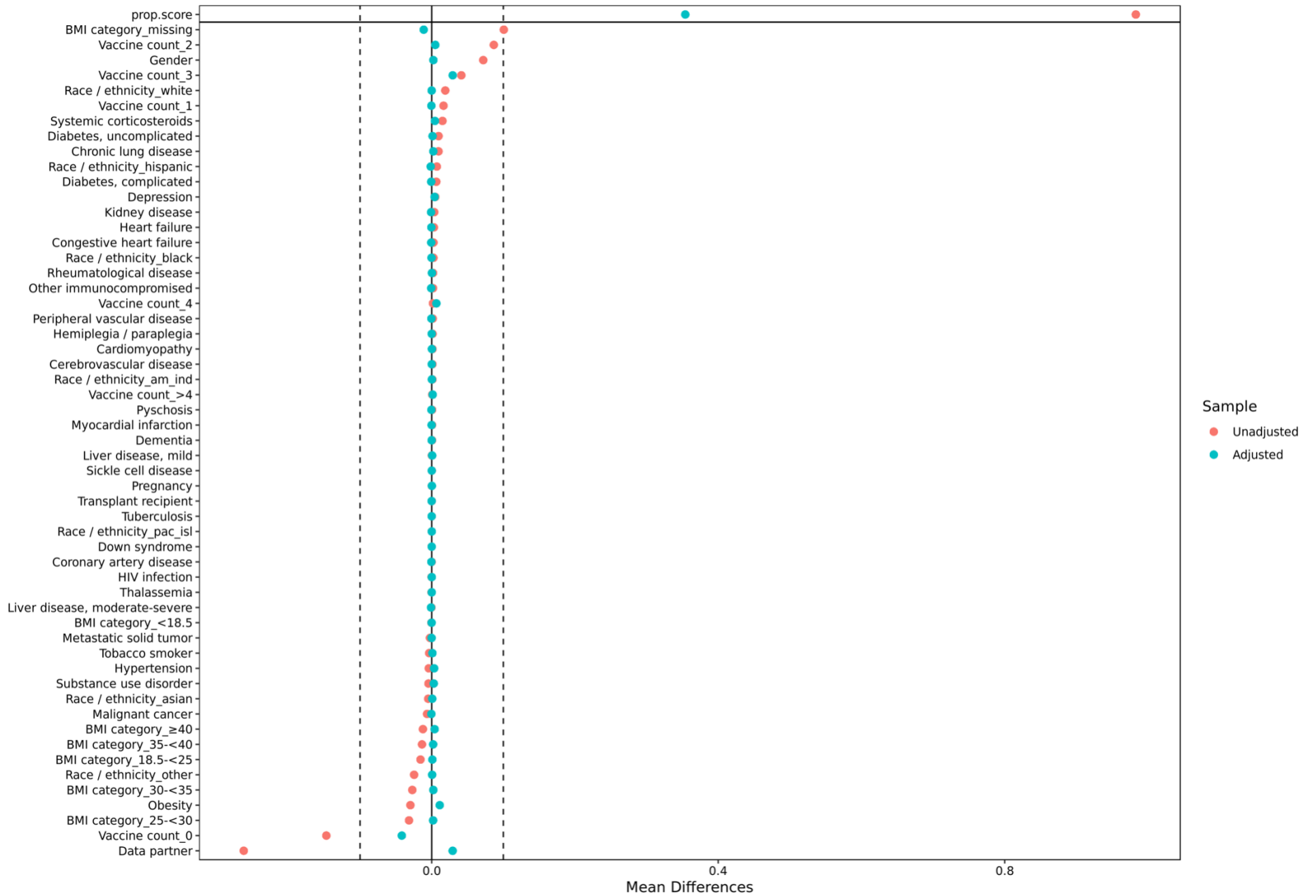
Covariate balance: Age < 18



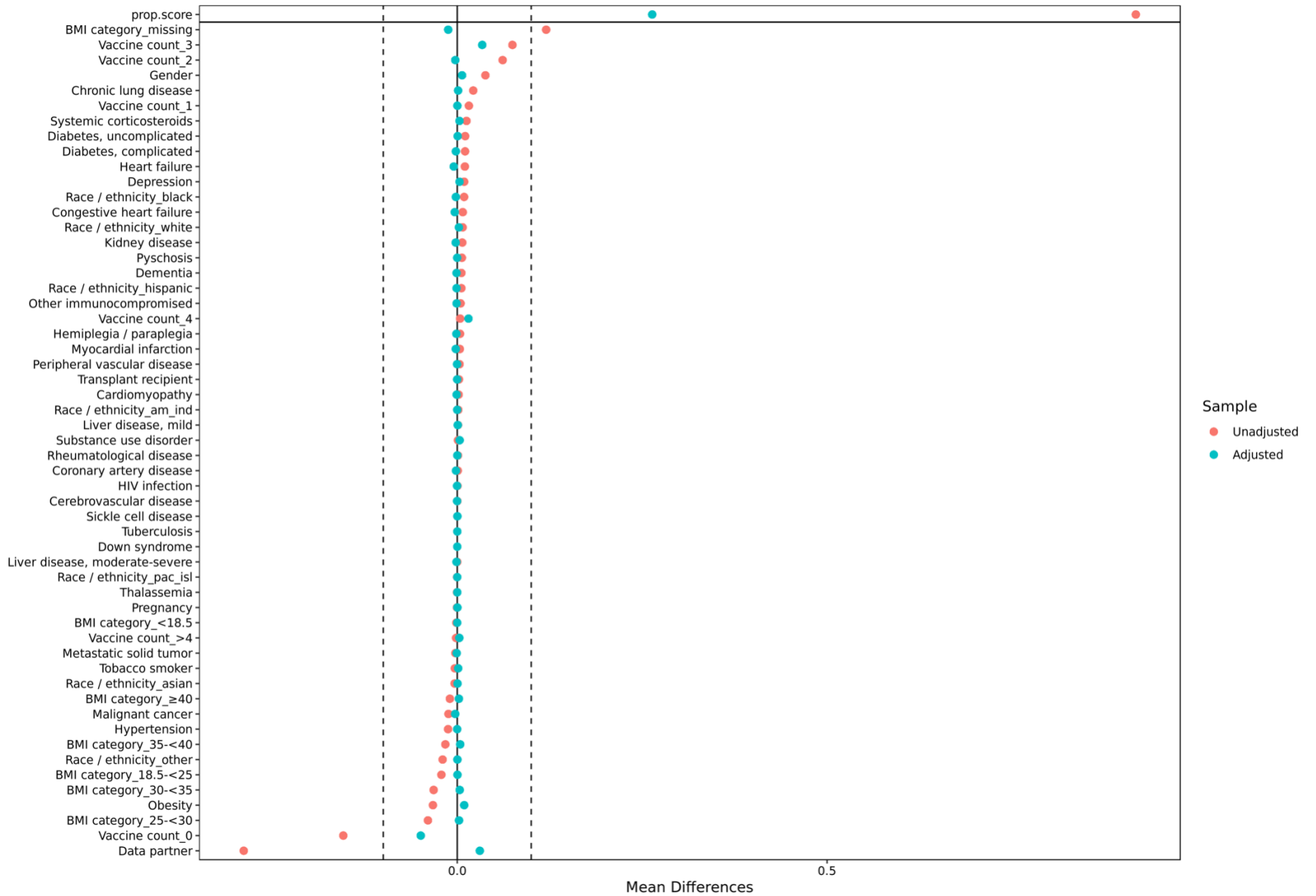
Covariate balance: Age 18 - 44



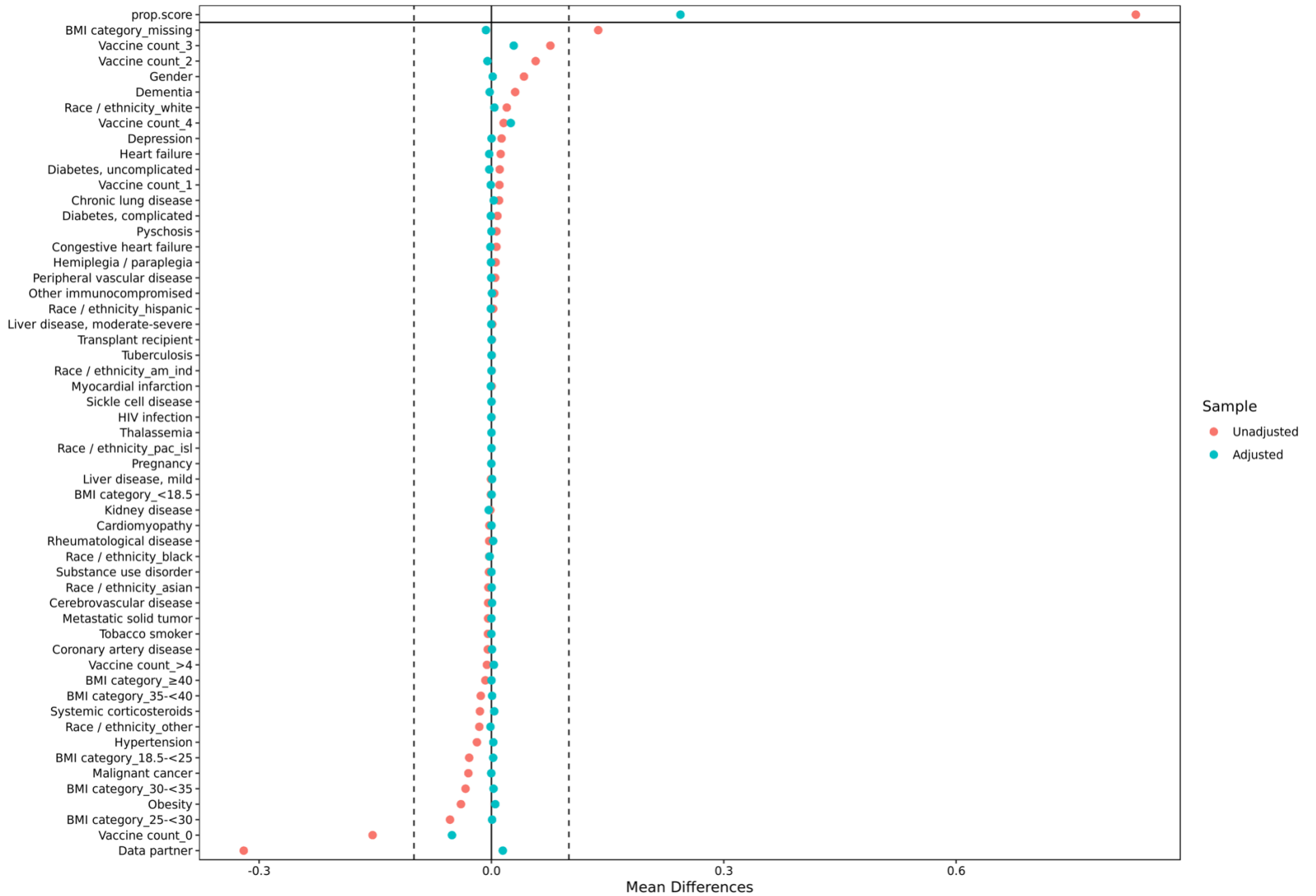
Covariate balance: Age 45 - 59



Covariate balance: Age 60 - 69



Covariate balance: Age 70+



III. Count of patients by infection status in each month

Month	First Infections	Second Infections
July-20	27,095	166
August-20	29,635	191
September-20	28,622	209
October-20	61,807	363
November-20	153,211	938
December-20	159,790	1,231
January-21	106,250	1,164
February-21	35,763	830
March-21	28,889	885
April-21	34,506	901
May-21	21,196	647
June-21	8,502	350
July-21	22,421	575
August-21	96,179	2,003
September-21	97,176	1,339
October-21	54,358	1,218
November-21	80,685	2,249
December-21	171,394	10,707
January-22	351,754	40,905
February-22	47,466	5,306
March-22	10,953	1,341
April-22	18,708	1,768
May-22	51,186	5,545
June-22	53,394	7,603
July-22	68,884	12,553
August-22	66,151	13,697
September-22	32,466	5,717
October-22	23,418	4,479
November-22	28,256	7,087
December-22	42,834	9,531
January-23	21,630	4,395
February-23	10,403	1,094
March-23	3,491	404

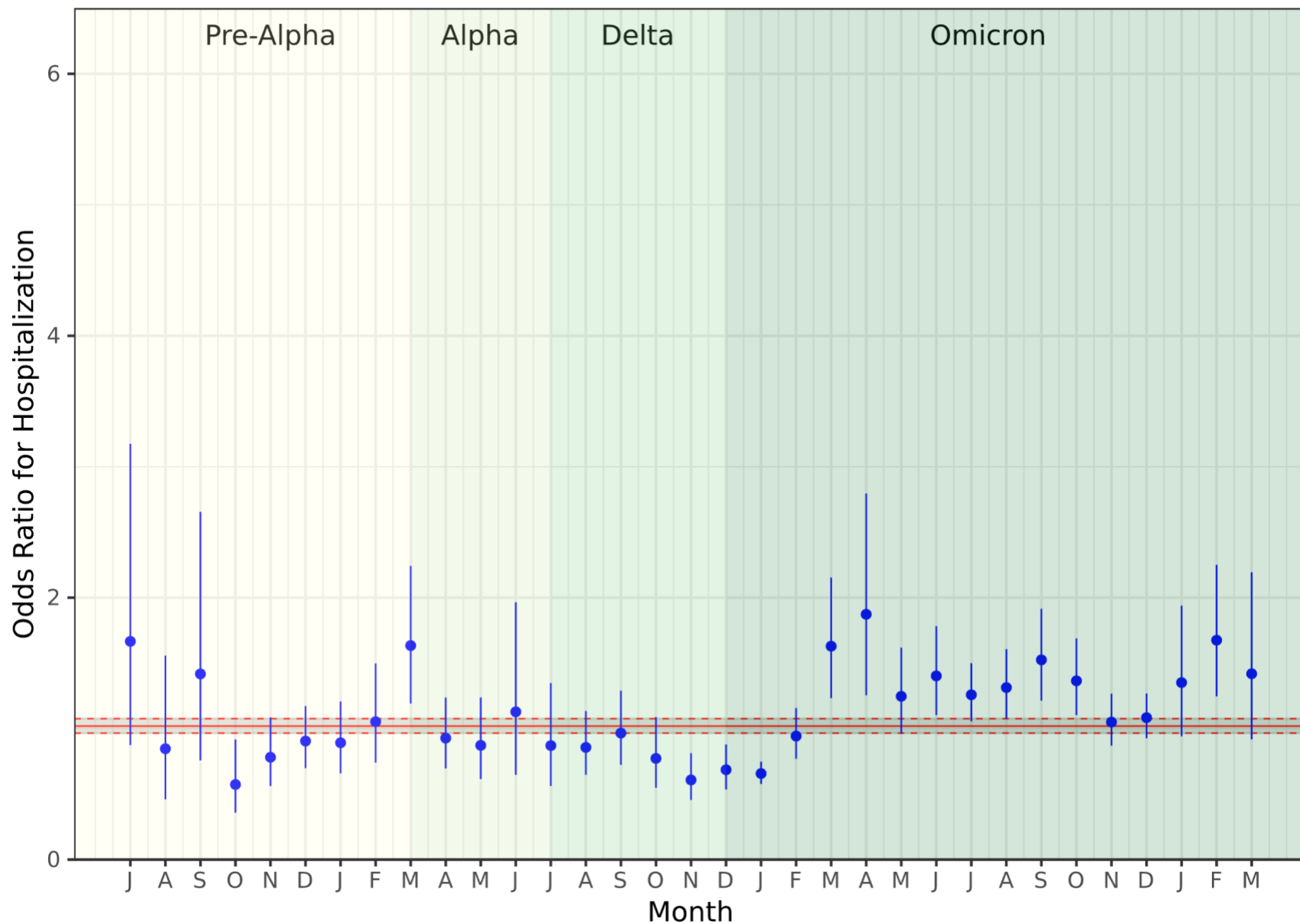
IV. Distribution of covariates across first and second infections

Covariate	First infection (%)	Second infection (%)
Health system: A	9.3%	6.1%
Health system: B	73.7%	83.9%
Health system: C	5.1%	3.4%
Health system: D	2.7%	1.6%
Health system: E	2.4%	2.5%
Health system: F	1.8%	1.0%
Health system: G	4.4%	1.2%
Health system: H	0.6%	0.3%
Missing postal code	1.1%	0.4%
Vaccine doses: 0	68.4%	55.0%
Vaccine doses: 1	3.6%	5.3%
Vaccine doses: 2	16.3%	24.3%
Vaccine doses: 3	9.2%	12.8%
Vaccine doses: 4	1.9%	2.1%
Vaccine doses: >4	0.6%	0.5%
BMI: <18.5	1.5%	0.9%
BMI: 18.5 – 24.9	4.4%	2.5%
BMI: 25 – 29.9	6.2%	3.4%
BMI: 30 – 34.9	5.3%	3.2%
BMI: 35 – 40	3.2%	2.2%
BMI: >40	3.4%	2.6%
BMI: Missing	76.0%	85.1%
Tuberculosis	0.05%	0.05%
Liver disease, mild	2.8%	2.8%
Liver disease, moderate/severe	0.4%	0.4%
Thalassemia	0.05%	0.03%
Rheumatological disease	3.3%	3.1%
Dementia	1.3%	1.5%
Congestive heart failure	2.5%	2.4%
Substance use disorder	6.9%	7.2%
Down syndrome	0.01%	<0.01%
Kidney disease	5.0%	4.7%
Malignant cancer	4.7%	3.6%
Diabetes, uncomplicated	9.8%	9.8%
Diabetes, complicated	4.8%	4.8%
Cerebrovascular disease	2.2%	1.9%
Peripheral vascular disease	2.3%	2.2%
Pregnancy	4.6%	5.7%
Hemiplegia / paraplegia	0.5%	0.6%
Psychosis	0.6%	0.8%
Obesity	17.8%	16.0%
Coronary artery disease	4.9%	4.2%
Systemic corticosteroids	19.9%	20.9%
Depression	9.5%	10.4%
Metastatic solid tumor cancers	0.6%	0.4%
HIV infection	0.2%	0.2%
Chronic lung disease	10.0%	10.6%
Sickle cell disease	0.1%	0.1%
Myocardial infarction	1.8%	1.6%
Cardiomyopathies	1.5%	1.3%
Hypertension	21.5%	20.0%
Other immunocompromised	3.9%	3.9%

Tobacco smoking	2.1%	1.9%
Solid organ / blood stem cell transplant	0.2%	0.2%

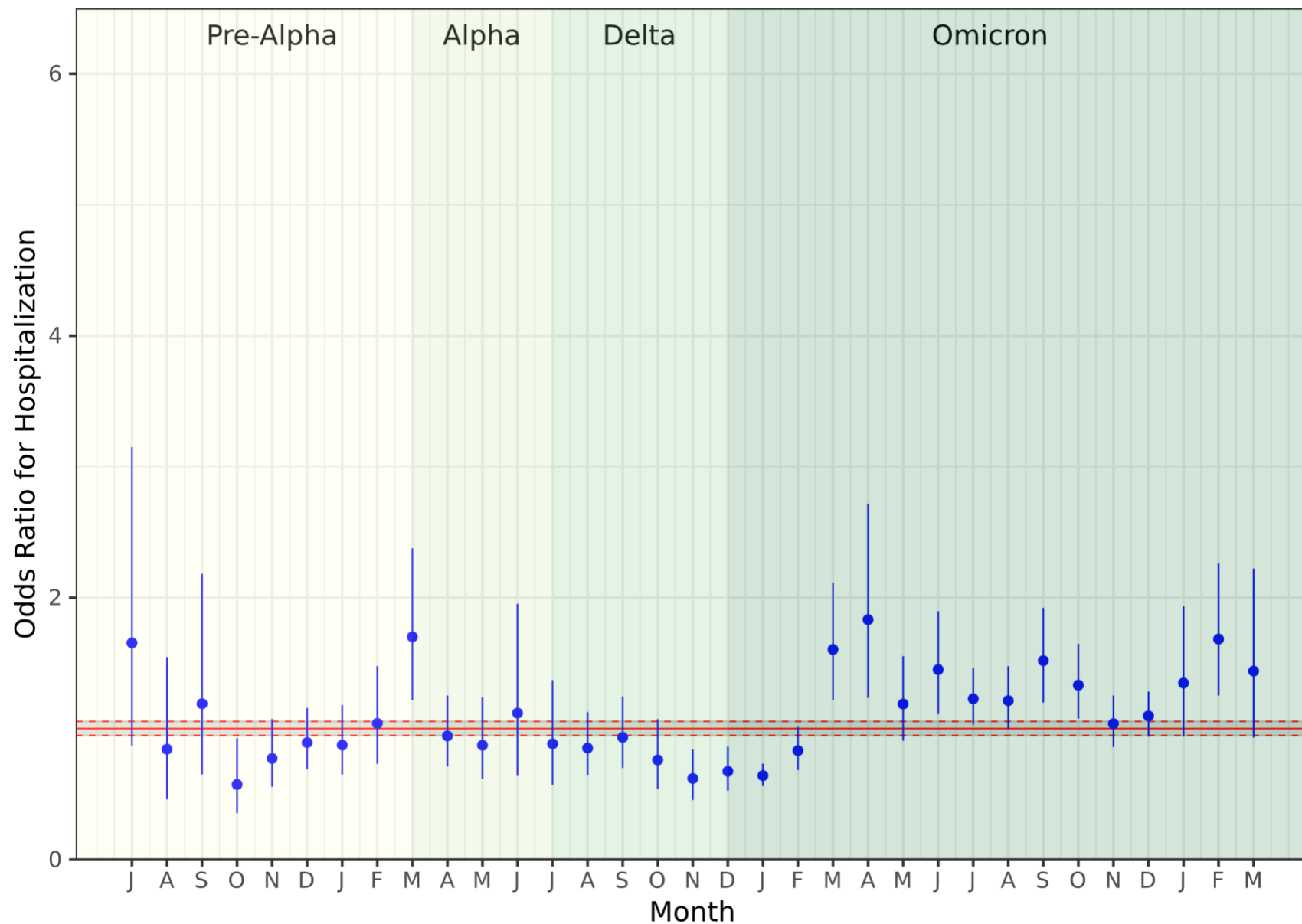
V. Risk of hospitalization: No lookback period

Hospitalization Risk (No Lookback): Population-Wide

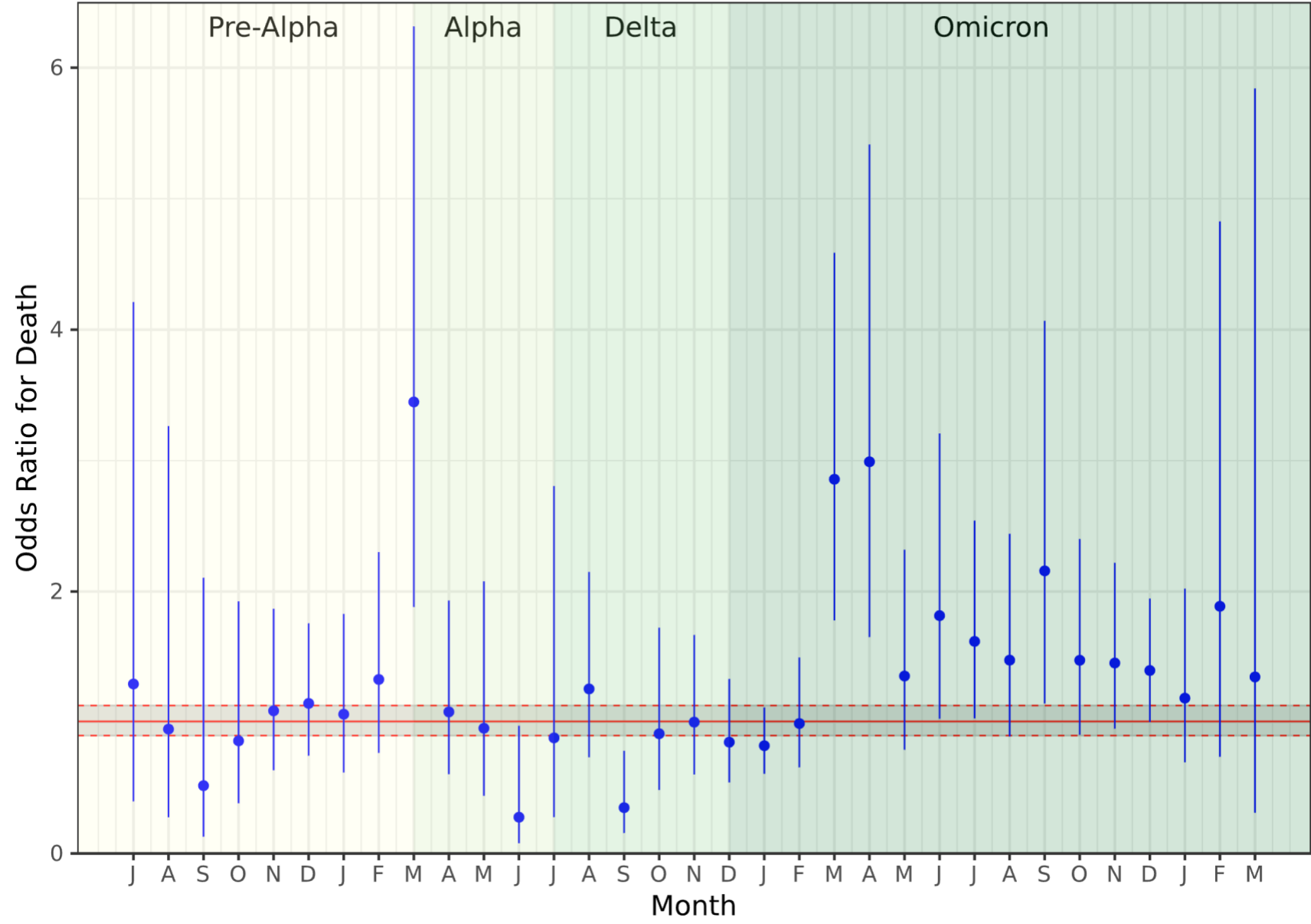


VI. Risk of hospitalization: 90-day reinfection window

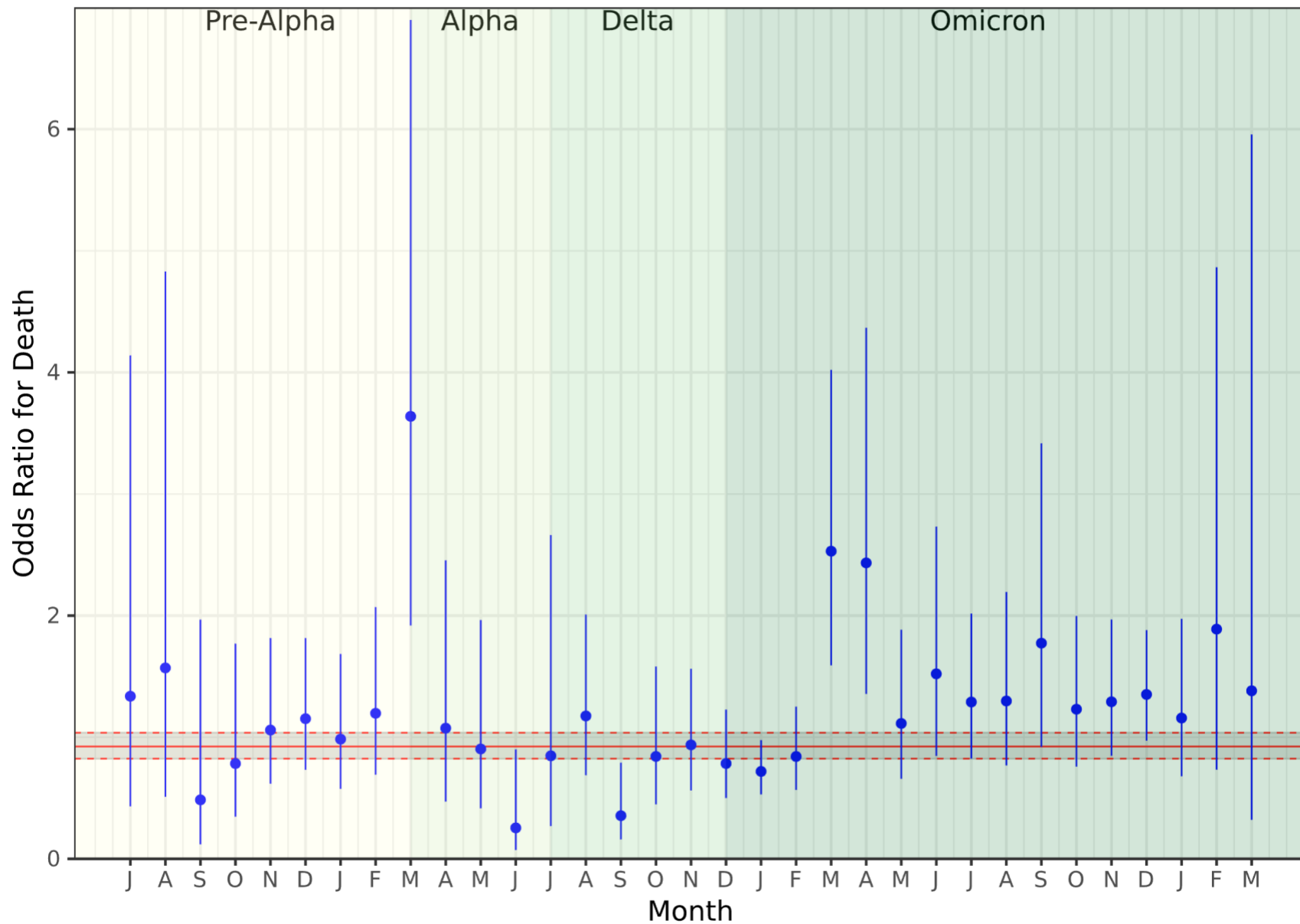
Hospitalization Risk (90-day Reinfection Window): Population-Wide



Mortality Risk (No Lookback): Population-Wide



Mortality Risk (No Lookback): Population-Wide

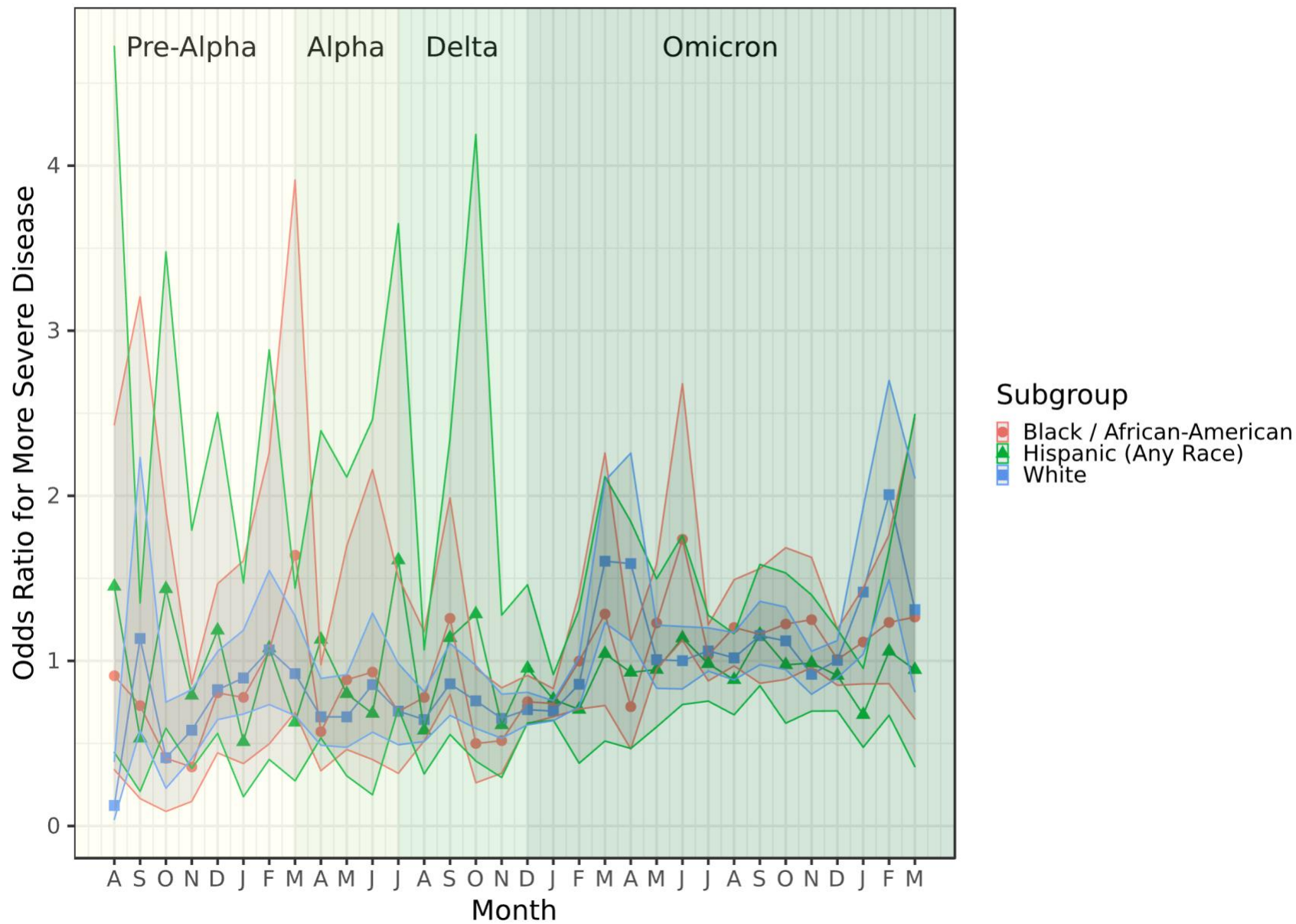


IX. Subgroup analyses of overall severity by race/ethnicity, gender, and age

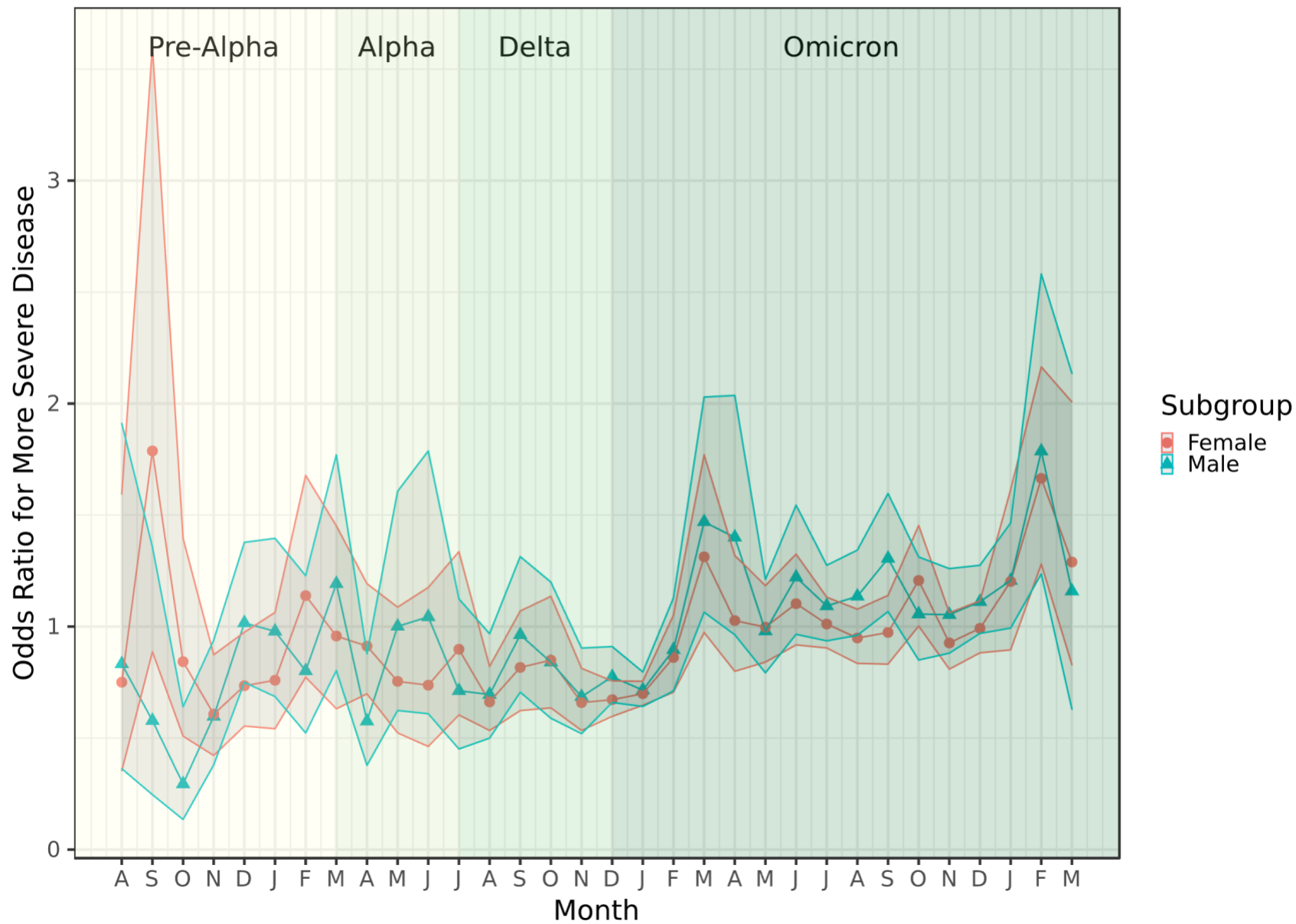
Pandemic-wide and minimum/maximum odds ratios (ORs) for more severe disease

	Pandemic-Wide OR (95% CI)	Minimum Monthly OR (95% CI)	Maximum Monthly OR (95% CI)
Full Cohort	1.06 (1.03 – 1.10)	October 2020: 0.56 (0.37 – 0.84)	February 2023: 1.64 (1.33 – 2.00)
Black / African American	1.08 (1.01 – 1.15)	November 2020: 0.36 (0.15 – 0.86)	March 2021: 1.64 (0.69 – 3.91)
Hispanic	0.99 (0.92 – 1.08)	January 2021: 0.51 (0.18 – 1.47)	July 2020: 1.64 (0.49 – 5.51)
White	1.02 (0.98 – 1.07)	August 2020: 0.12 (0.04 – 0.39)	February 2023: 2.01 (1.49 – 2.70)
Female	1.00 (0.96 – 1.04)	November 2020: 0.61 (0.42 – 0.87)	September 2020: 1.79 (0.89 – 3.60)
Male	1.11 (1.06 – 1.16)	October 2020: 0.29 (0.14 – 0.64)	February 2023: 1.79 (1.24 – 2.58)
Age <18	1.34 (1.22 – 1.49)	February 2021: 0.49 (0.07 – 3.56)	June 2021: 2.56 (0.58 – 11.22)
Age 18 – 44	0.99 (0.95 – 1.03)	November 2020: 0.44 (0.21 – 0.90)	September 2020: 2.34 (0.85 – 6.45)
Age 45 – 59	0.92 (0.87 – 0.97)	August 2020: 0.11 (0.03 – 0.39)	February 2023: 1.96 (1.21 – 3.16)
Age 60 – 69	0.92 (0.86 – 0.99)	June 2021: 0.28 (0.11 – 0.71)	March 2022: 1.62 (0.86 – 3.04)
Age ≤70	0.89 (0.85 – 0.94)	July 2020: 0.24 (0.09 – 0.65)	April 2022: 2.00 (1.32 – 3.03)

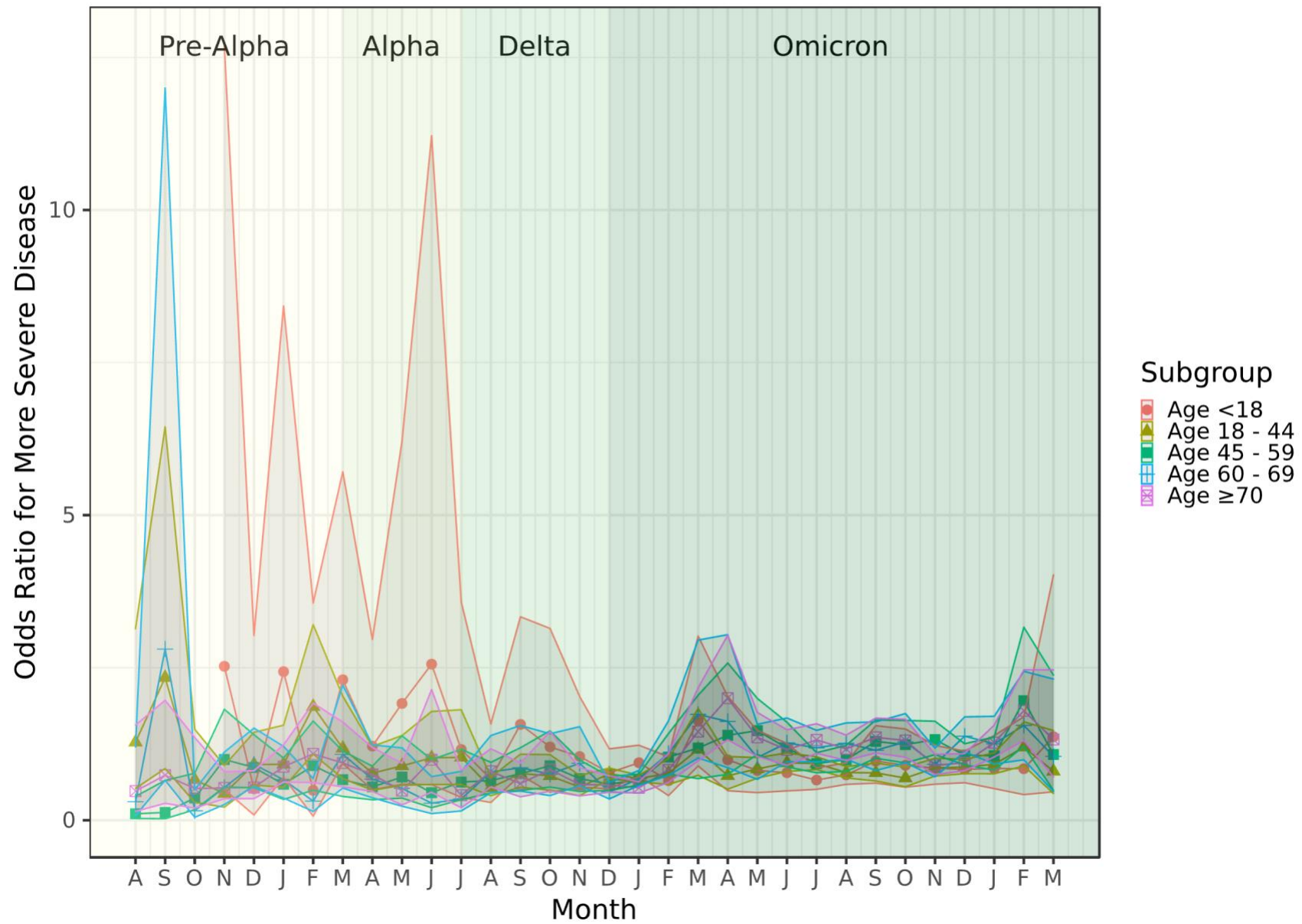
Subgroup Analysis by Race/Ethnicity



Subgroup Analysis by Gender

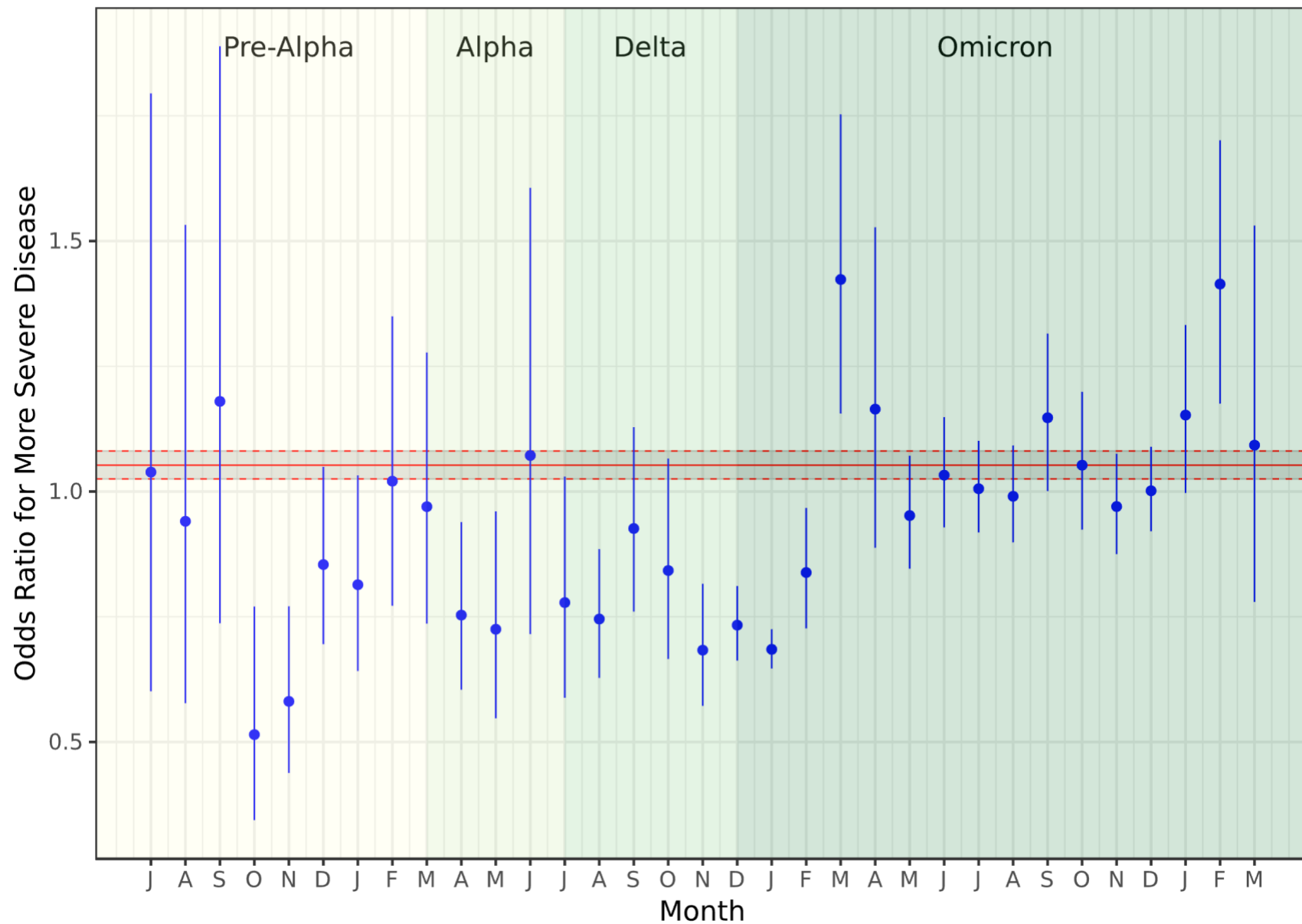


Subgroup Analysis by Age



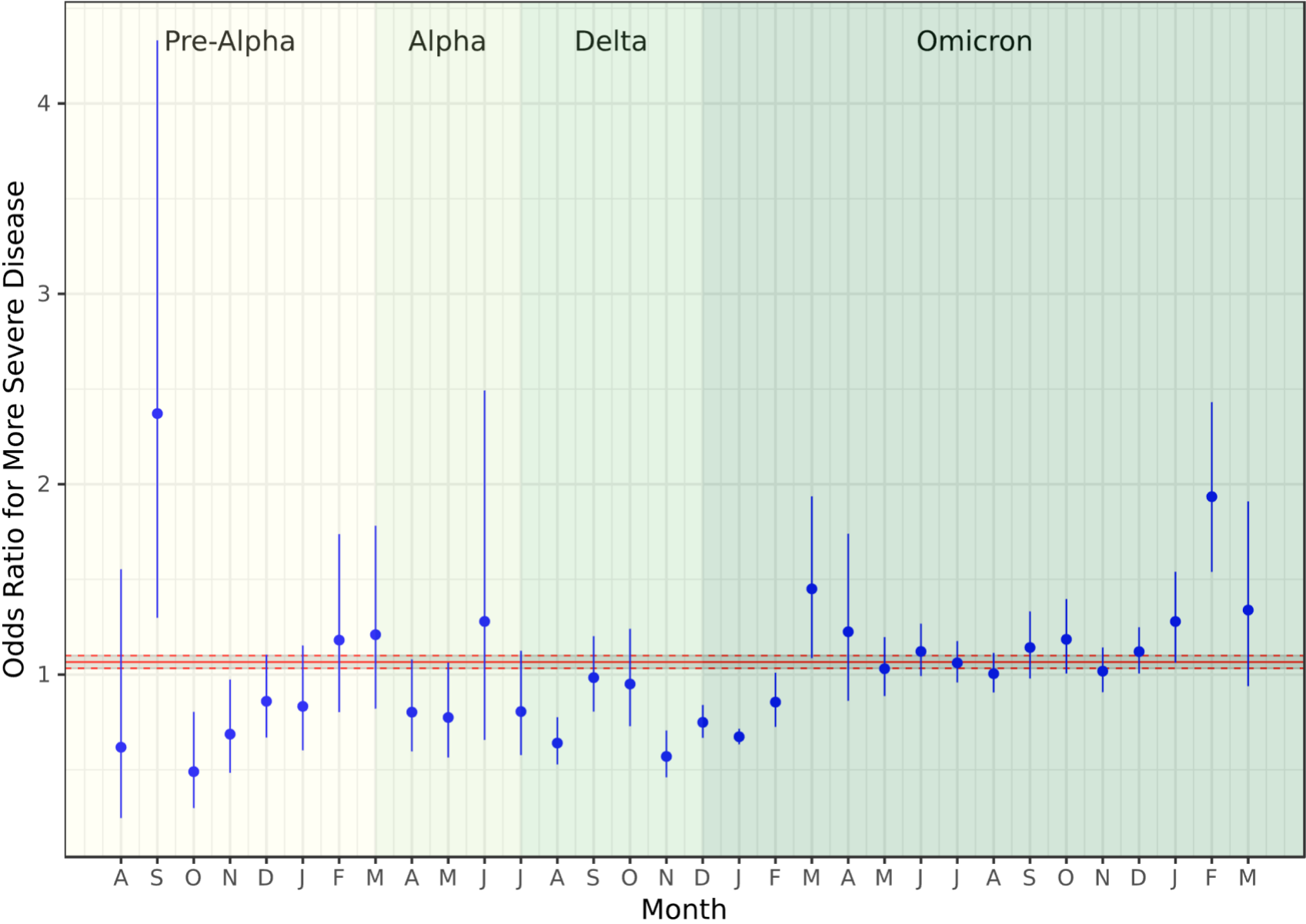
X. Overall severity: No visit within lookback period required for included patients

Full Cohort Analysis: No Required Lookback Period



XI. Overall severity: Minimum of 90 days required between first infection and second infection

Full Cohort Analysis: 90 Day Reinfection Window



Individual Acknowledgements for Core Contributors: We gratefully acknowledge the following core contributors to N3C: Adam B. Wilcox, Adam M. Lee, Alexis Graves, Alfred (Jerrod) Anzalone, Amin Manna, Amit Saha, Amy Olex, Andrea Zhou, Andrew E. Williams, Andrew Southerland, Andrew T. Girvin, Anita Walden, Anjali A. Sharathkumar, Benjamin Amor, Benjamin Bates, Brian Hendricks, Brijesh Patel, Caleb Alexander, Carolyn Bramante, Cavin Ward-Caviness, Charisse Madlock-Brown, Christine Suver, Christopher Chute, Christopher Dillon, Chunlei Wu, Clare Schmitt, Cliff Takemoto, Dan Housman, Davera Gabriel, David A. Eichmann, Diego Mazzotti, Don Brown, Eilis Boudreau, Elaine Hill, Elizabeth Zampino, Emily Carlson Marti, Emily R. Pfaff, Evan French, Farrukh M Koraishy, Federico Mariona, Fred Prior, George Sokos, Greg Martin, Harold Lehmann, Heidi Spratt, Hemalkumar Mehta, Hongfang Liu, Hythem Sidky, J.W. Awori Hayanga, Jami Pincavitch, Jaylyn Clark, Jeremy Richard Harper, Jessica Islam, Jin Ge, Joel Gagnier, Joel H. Saltz, Joel Saltz, Johanna Loomba, John Buse, Jomol Mathew, Joni L. Rutter, Julie A. McMurry, Justin Guinney, Justin Starren, Karen Crowley, Katie Rebecca Bradwell, Kellie M. Walters, Ken Wilkins, Kenneth R. Gersing, Kenrick Dwain Cato, Kimberly Murray, Kristin Kostka, Lavance Northington, Lee Allan Pyles, Leonie Misquitta, Lesley Cottrell, Lili Portilla, Mariam Deacy, Mark M. Bissell, Marshall Clark, Mary Emmett, Mary Morrison Saltz, Matvey B. Palchuk, Melissa A. Haendel, Meredith Adams, Meredith Temple-O'Connor, Michael G. Kurilla, Michele Morris, Nabeel Qureshi, Nasia Safdar, Nicole Garbarini, Noha Sharafeldin, Ofer Sadan, Patricia A. Francis, Penny Wung Burgoon, Peter Robinson, Philip R.O. Payne, Rafael Fuentes, Randeep Jawa, Rebecca Erwin-Cohen, Rena Patel, Richard A. Moffitt, Richard L. Zhu, Rishi Kamaleswaran, Robert Hurley, Robert T. Miller, Saiju Pyarajan, Sam G. Michael, Samuel Bozzette, Sandeep Mallipattu, Satyanarayana Vedula, Scott Chapman, Shawn T. O'Neil, Soko Setoguchi, Stephanie S. Hong, Steve Johnson, Tellen D. Bennett, Tiffany Callahan, Umit Topaloglu, Usman Sheikh, Valery Gordon, Vignesh Subbian, Warren A. Kibbe, Wenndy Hernandez, Will Beasley, Will Cooper, William Hillegass, Xiaohan Tanner Zhang. Details of contributions available at covid.cd2h.org/core-contributors

Data Partners with Released Data: The following institutions whose data is released or pending:

Available: Advocate Health Care Network — UL1TR002389: The Institute for Translational Medicine (ITM) • Boston University Medical Campus — UL1TR001430: Boston University Clinical and Translational Science Institute • Brown University — U54GM115677: Advance Clinical Translational Research (Advance-CTR) • Carilion Clinic — UL1TR003015: iTHRIV Integrated Translational health Research Institute of Virginia • Charleston Area Medical Center — U54GM104942: West Virginia Clinical and Translational Science Institute (WVCTSI) • Children's Hospital Colorado — UL1TR002535: Colorado Clinical and Translational Sciences Institute • Columbia University Irving Medical Center — UL1TR001873: Irving Institute for Clinical and Translational Research • Duke University — UL1TR002553: Duke Clinical and Translational Science Institute • George Washington Children's Research Institute — UL1TR001876: Clinical and Translational Science Institute at Children's National (CTSA-CN) • George Washington University — UL1TR001876: Clinical and Translational Science Institute at Children's National (CTSA-CN) • Indiana University School of Medicine — UL1TR002529: Indiana Clinical and Translational Science Institute • Johns Hopkins University — UL1TR003098: Johns Hopkins Institute for Clinical and Translational Research • Loyola Medicine — Loyola University Medical Center • Loyola University Medical Center — UL1TR002389: The Institute for Translational Medicine (ITM) • Maine Medical Center — U54GM115516: Northern New England Clinical & Translational Research (NNE-CTR) Network • Massachusetts General Brigham — UL1TR002541: Harvard Catalyst • Mayo Clinic Rochester — UL1TR002377: Mayo Clinic Center for Clinical and Translational Science (CCaTS) • Medical University of South Carolina — UL1TR001450: South Carolina Clinical & Translational Research Institute (SCTR) • Montefiore Medical Center — UL1TR002556: Institute for Clinical and Translational Research at Einstein and Montefiore • Nemours — U54GM104941: Delaware CTR ACCEL Program • NorthShore University HealthSystem — UL1TR002389: The Institute for Translational Medicine (ITM) • Northwestern University at Chicago — UL1TR001422: Northwestern University Clinical and Translational Science Institute (NUCATS) • OCHIN — INV-018455: Bill and Melinda Gates Foundation grant to Sage Bionetworks • Oregon Health & Science University — UL1TR002369: Oregon Clinical and Translational Research Institute • Penn State Health Milton S. Hershey Medical Center — UL1TR002014: Penn State Clinical and Translational Science Institute • Rush University Medical Center —

UL1TR002389: The Institute for Translational Medicine (ITM) • Rutgers, The State University of New Jersey —
 UL1TR003017: New Jersey Alliance for Clinical and Translational Science • Stony Brook University —
 U24TR002306 • The Ohio State University — UL1TR002733: Center for Clinical and Translational Science • The
 State University of New York at Buffalo — UL1TR001412: Clinical and Translational Science Institute • The
 University of Chicago — UL1TR002389: The Institute for Translational Medicine (ITM) • The University of Iowa
 — UL1TR002537: Institute for Clinical and Translational Science • The University of Miami Leonard M. Miller
 School of Medicine — UL1TR002736: University of Miami Clinical and Translational Science Institute • The
 University of Michigan at Ann Arbor — UL1TR002240: Michigan Institute for Clinical and Health Research • The
 University of Texas Health Science Center at Houston — UL1TR003167: Center for Clinical and Translational
 Sciences (CCTS) • The University of Texas Medical Branch at Galveston — UL1TR001439: The Institute for
 Translational Sciences • The University of Utah — UL1TR002538: Uhealth Center for Clinical and Translational
 Science • Tufts Medical Center — UL1TR002544: Tufts Clinical and Translational Science Institute • Tulane
 University — UL1TR003096: Center for Clinical and Translational Science • University Medical Center New
 Orleans — U54GM104940: Louisiana Clinical and Translational Science (LA CaTS) Center • University of
 Alabama at Birmingham — UL1TR003096: Center for Clinical and Translational Science • University of Arkansas
 for Medical Sciences — UL1TR003107: UAMS Translational Research Institute • University of Cincinnati —
 UL1TR001425: Center for Clinical and Translational Science and Training • University of Colorado Denver,
 Anschutz Medical Campus — UL1TR002535: Colorado Clinical and Translational Sciences Institute • University
 of Illinois at Chicago — UL1TR002003: UIC Center for Clinical and Translational Science • University of Kansas
 Medical Center — UL1TR002366: Frontiers: University of Kansas Clinical and Translational Science Institute •
 University of Kentucky — UL1TR001998: UK Center for Clinical and Translational Science • University of
 Massachusetts Medical School Worcester — UL1TR001453: The UMass Center for Clinical and Translational
 Science (UMCCTS) • University of Minnesota — UL1TR002494: Clinical and Translational Science Institute •
 University of Mississippi Medical Center — U54GM115428: Mississippi Center for Clinical and Translational
 Research (CCTR) • University of Nebraska Medical Center — U54GM115458: Great Plains IDeA-Clinical &
 Translational Research • University of North Carolina at Chapel Hill — UL1TR002489: North Carolina
 Translational and Clinical Science Institute • University of Oklahoma Health Sciences Center — U54GM104938:
 Oklahoma Clinical and Translational Science Institute (OCTSI) • University of Rochester — UL1TR002001: UR
 Clinical & Translational Science Institute • University of Southern California — UL1TR001855: The Southern
 California Clinical and Translational Science Institute (SC CTSI) • University of Vermont — U54GM115516:
 Northern New England Clinical & Translational Research (NNE-CTR) Network • University of Virginia —
 UL1TR003015: iTHRIV Integrated Translational health Research Institute of Virginia • University of Washington
 — UL1TR002319: Institute of Translational Health Sciences • University of Wisconsin-Madison —
 UL1TR002373: UW Institute for Clinical and Translational Research • Vanderbilt University Medical Center —
 UL1TR002243: Vanderbilt Institute for Clinical and Translational Research • Virginia Commonwealth University
 — UL1TR002649: C. Kenneth and Dianne Wright Center for Clinical and Translational Research • Wake Forest
 University Health Sciences — UL1TR001420: Wake Forest Clinical and Translational Science Institute •
 Washington University in St. Louis — UL1TR002345: Institute of Clinical and Translational Sciences • Weill
 Medical College of Cornell University — UL1TR002384: Weill Cornell Medicine Clinical and Translational
 Science Center • West Virginia University — U54GM104942: West Virginia Clinical and Translational Science
 Institute (WVCTSI)
 Submitted: Icahn School of Medicine at Mount Sinai — UL1TR001433: ConduITS Institute for Translational
 Sciences • The University of Texas Health Science Center at Tyler — UL1TR003167: Center for Clinical and
 Translational Sciences (CCTS) • University of California, Davis — UL1TR001860: UCDavis Health Clinical and
 Translational Science Center • University of California, Irvine — UL1TR001414: The UC Irvine Institute for
 Clinical and Translational Science (ICTS) • University of California, Los Angeles — UL1TR001881: UCLA Clinical
 Translational Science Institute • University of California, San Diego — UL1TR001442: Altman Clinical and
 Translational Research Institute • University of California, San Francisco — UL1TR001872: UCSF Clinical and
 Translational Science Institute

Pending: Arkansas Children's Hospital — UL1TR003107: UAMS Translational Research Institute • Baylor College of Medicine — None (Voluntary) • Children's Hospital of Philadelphia — UL1TR001878: Institute for Translational Medicine and Therapeutics • Cincinnati Children's Hospital Medical Center — UL1TR001425: Center for Clinical and Translational Science and Training • Emory University — UL1TR002378: Georgia Clinical and Translational Science Alliance • HonorHealth — None (Voluntary) • Loyola University Chicago — UL1TR002389: The Institute for Translational Medicine (ITM) • Medical College of Wisconsin — UL1TR001436: Clinical and Translational Science Institute of Southeast Wisconsin • MedStar Health Research Institute — UL1TR001409: The Georgetown-Howard Universities Center for Clinical and Translational Science (GHUCCTS) • MetroHealth — None (Voluntary) • Montana State University — U54GM115371: American Indian/Alaska Native CTR • NYU Langone Medical Center — UL1TR001445: Langone Health's Clinical and Translational Science Institute • Ochsner Medical Center — U54GM104940: Louisiana Clinical and Translational Science (LA CaTS) Center • Regenstrief Institute — UL1TR002529: Indiana Clinical and Translational Science Institute • Sanford Research — None (Voluntary) • Stanford University — UL1TR003142: Spectrum: The Stanford Center for Clinical and Translational Research and Education • The Rockefeller University — UL1TR001866: Center for Clinical and Translational Science • The Scripps Research Institute — UL1TR002550: Scripps Research Translational Institute • University of Florida — UL1TR001427: UF Clinical and Translational Science Institute • University of New Mexico Health Sciences Center — UL1TR001449: University of New Mexico Clinical and Translational Science Center • University of Texas Health Science Center at San Antonio — UL1TR002645: Institute for Integration of Medicine and Science • Yale New Haven Hospital — UL1TR001863: Yale Center for Clinical Investigation