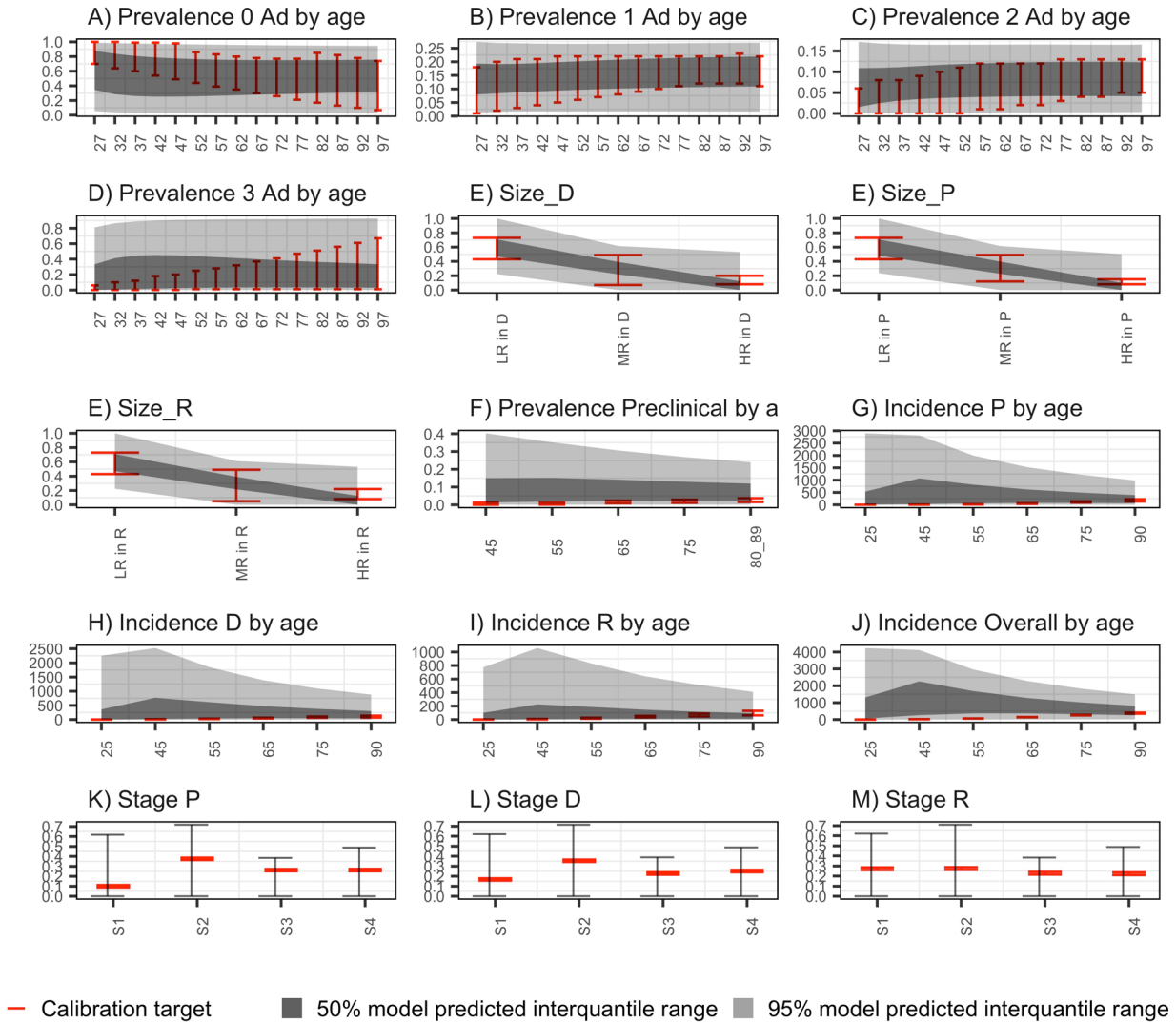


Supplementary material to “Emulator-based Bayesian calibration of the CISNET  
colorectal cancer models.”

Figure S1. Model outputs coverage of targets

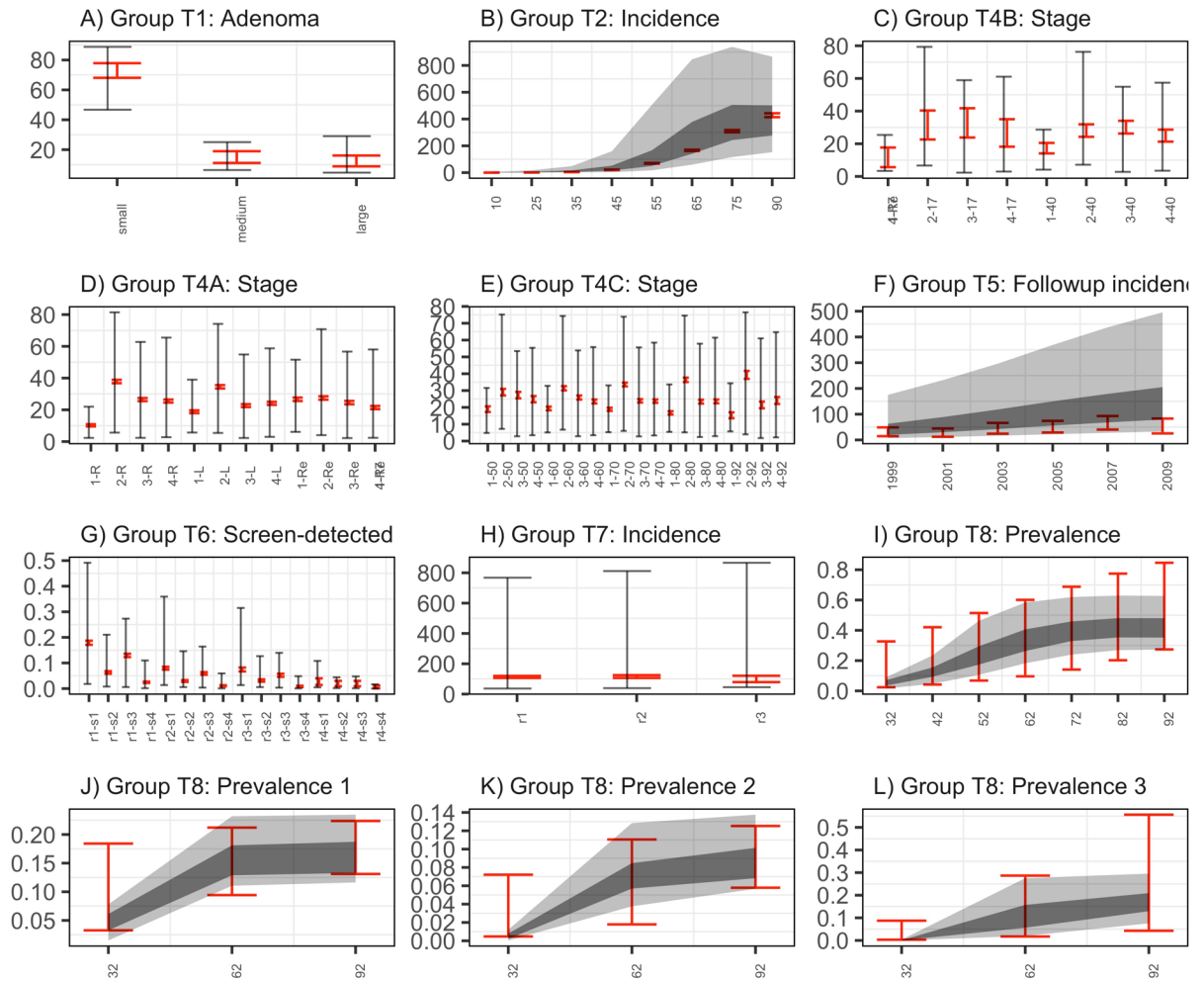
*S1.1 SimCRC*

**SimCRC targets coverage**



## S1.2 MISCAN-Colon

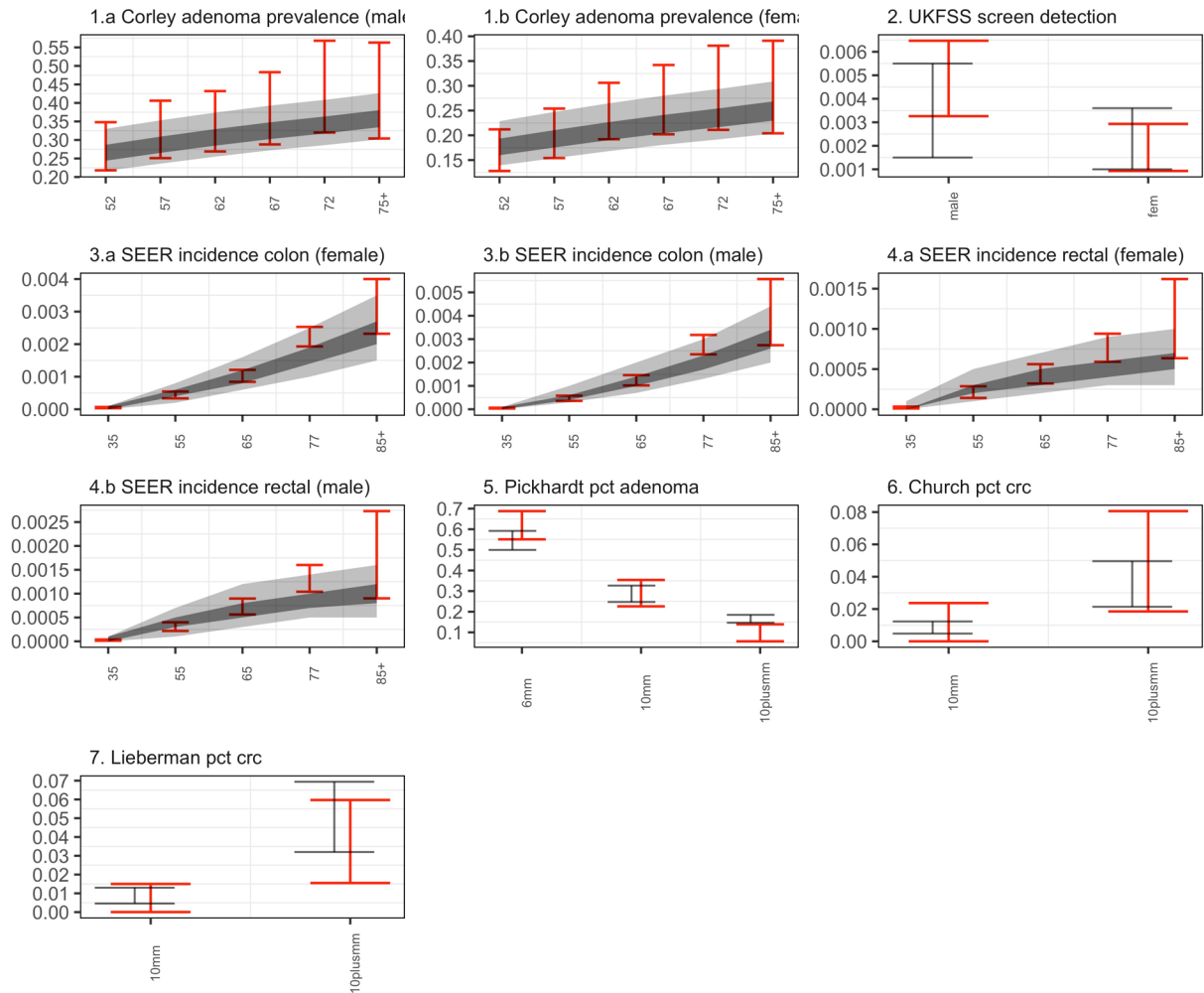
### MISCAN targets coverage



— Calibration target    ■ 50% model predicted interquartile range    ■ 95% model predicted interquartile range

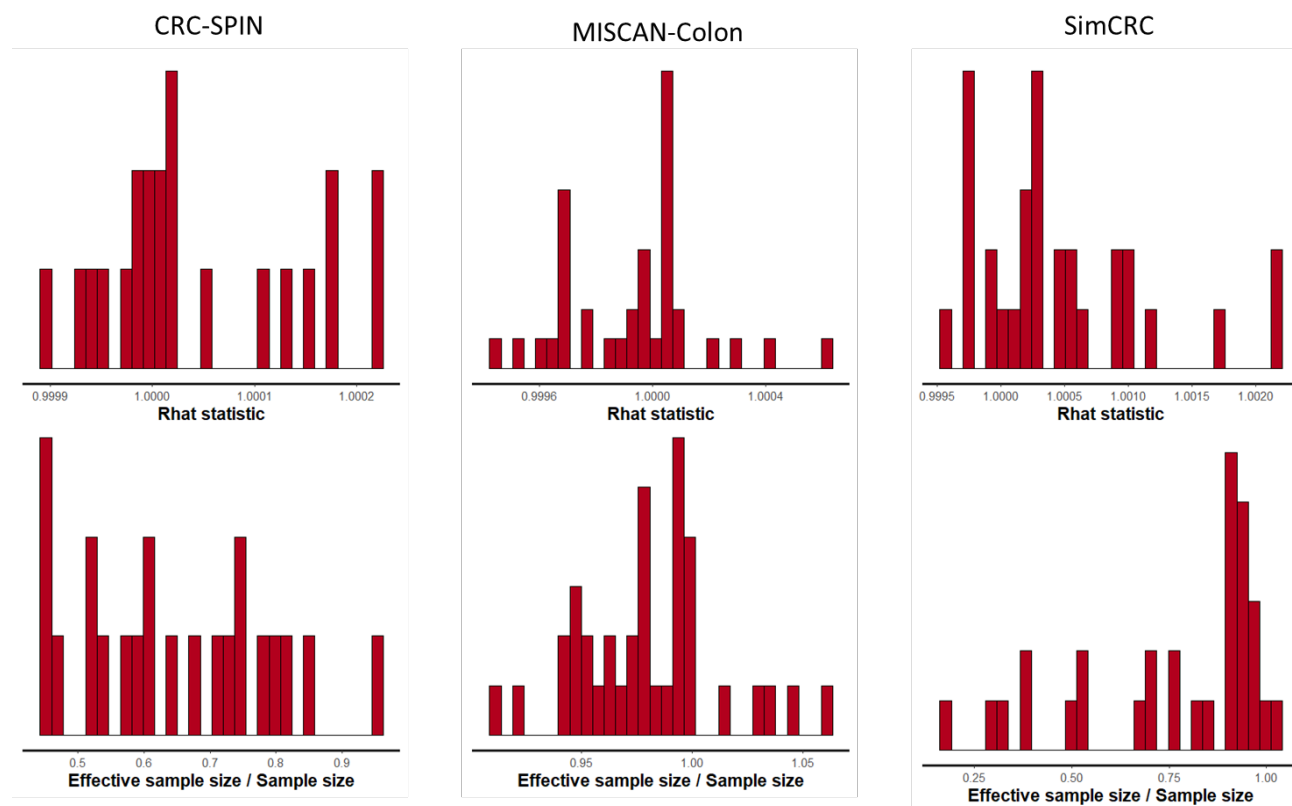
### SI.3 CRC-SPIN

#### CRC SPIN target coverage



— Calibration target    ■ 50% model predicted interquartile range    ■ 95% model predicted interquartile range

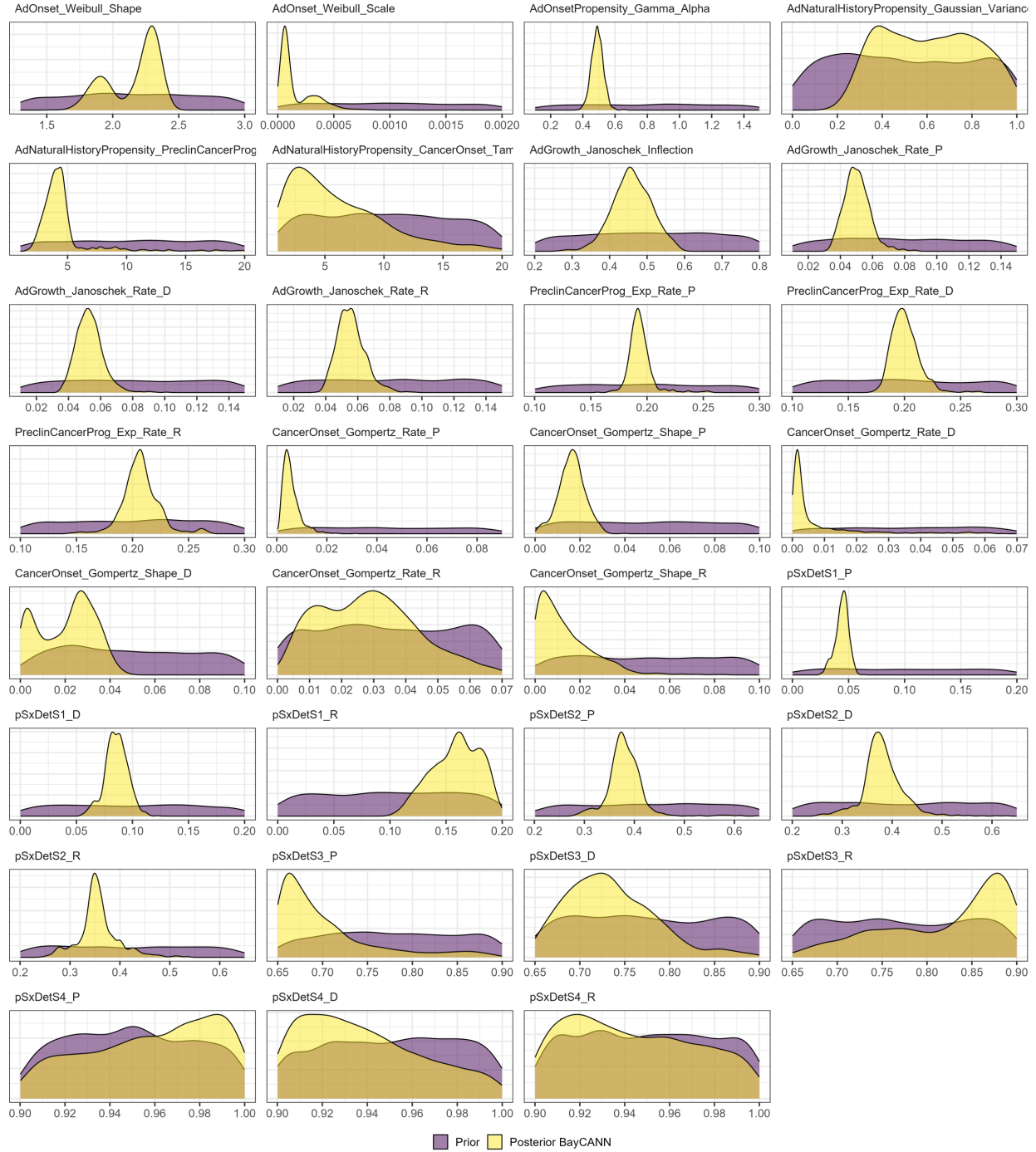
**Figure S2. R-hat values for convergence diagnostic and Effective-sample size for efficiency diagnostic.**





**Figure S3. Prior and posterior distributions of the calibrated input parameters for the three CISNET-CRC models**

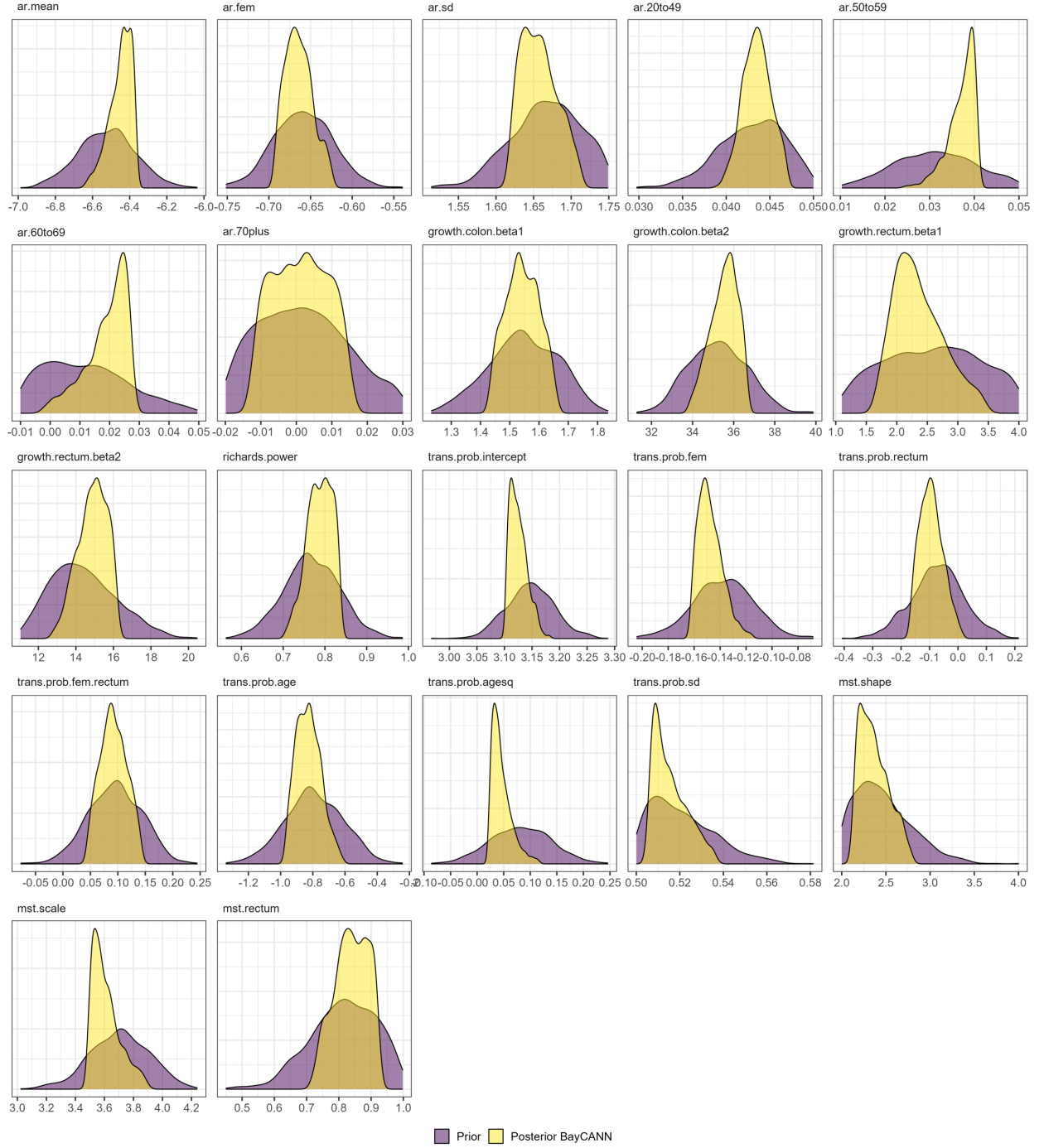
***S3.1 SimCRC***



### S3.2 MISCAN-Colon



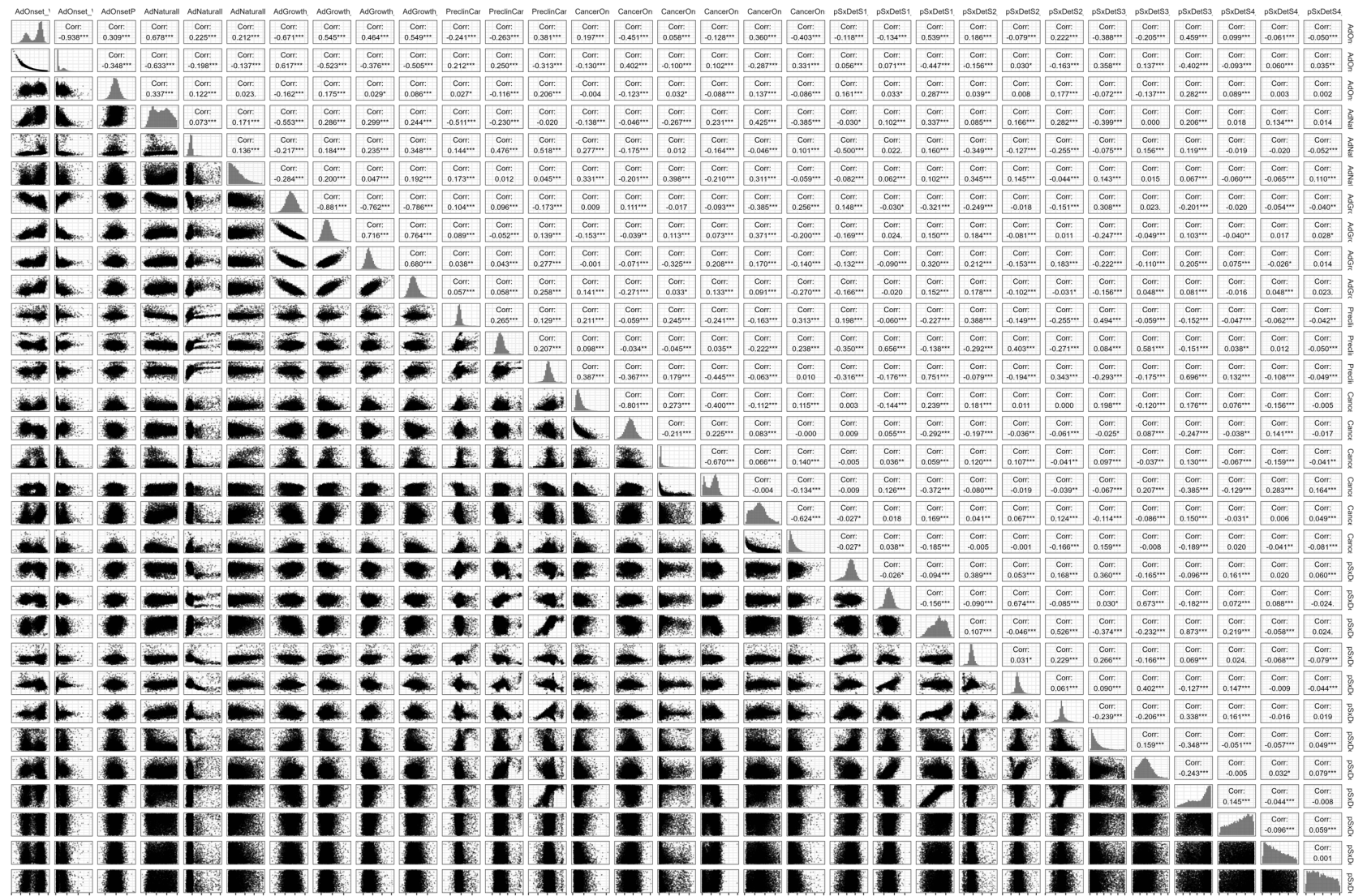
### S3.3 CRC-SPIN



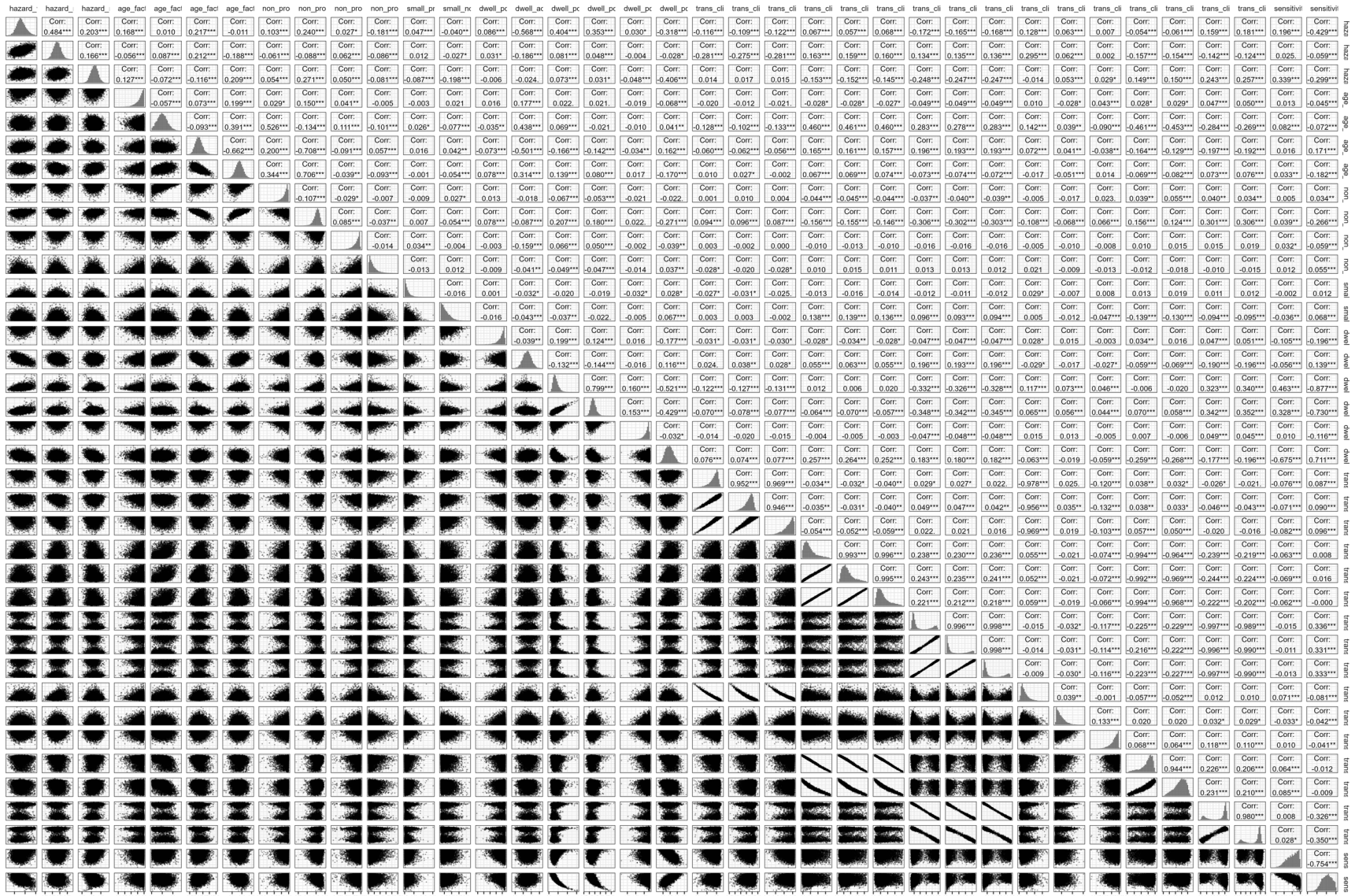
Note: Originally, the prior distributions of CRC-SPIN were set as uniform. However, due to the LHS draws stopping early when predictions fall out of range, this generates a non-uniform prior distribution.

**Figure S4. Joint posterior distribution of the calibrated input parameters for the three CISNET-CRC models.**

### S4.1 SimCRC



### ***S4.2 MISCAN-Colon***





### S4.3 CRC-SPIN

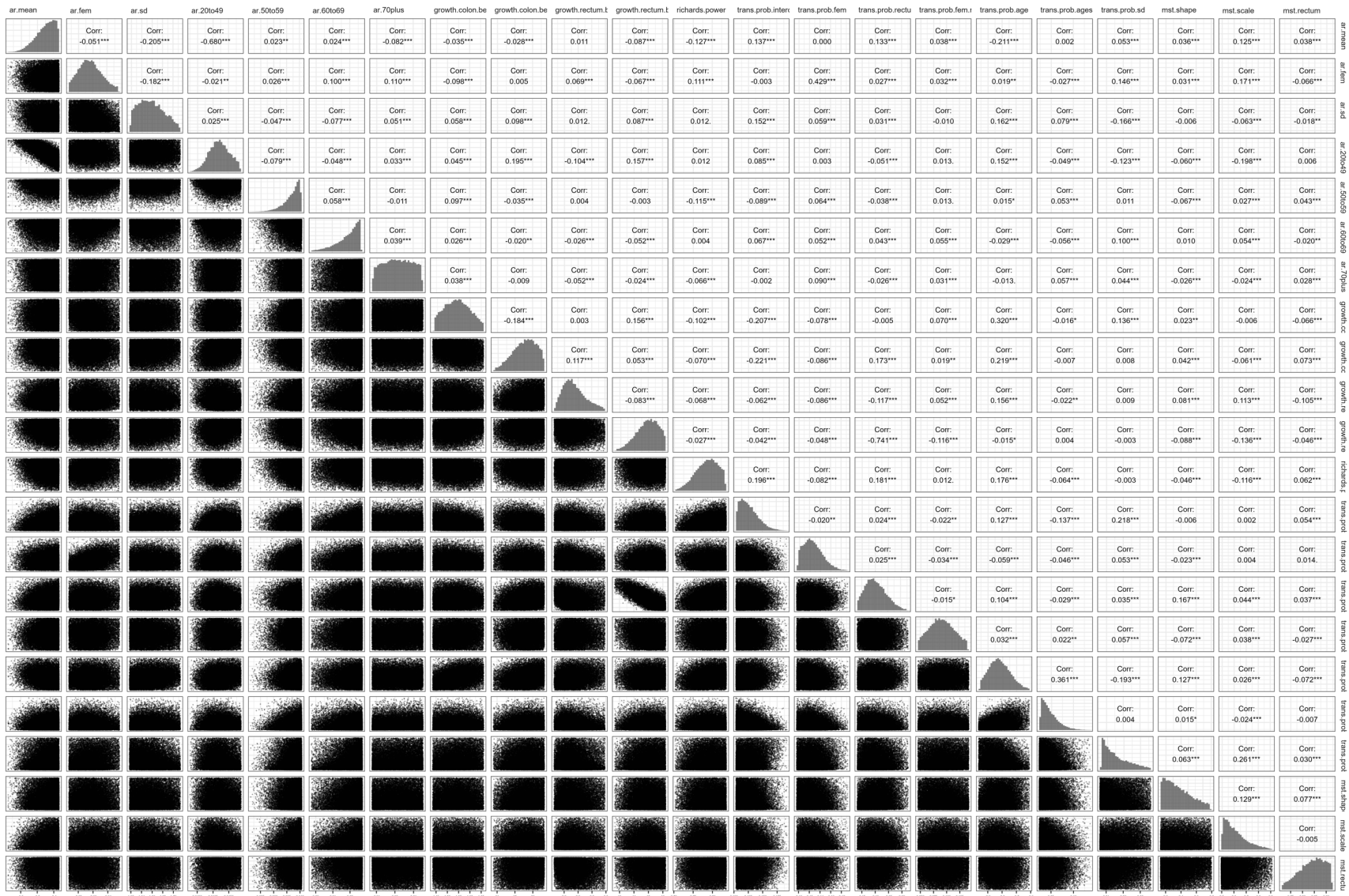
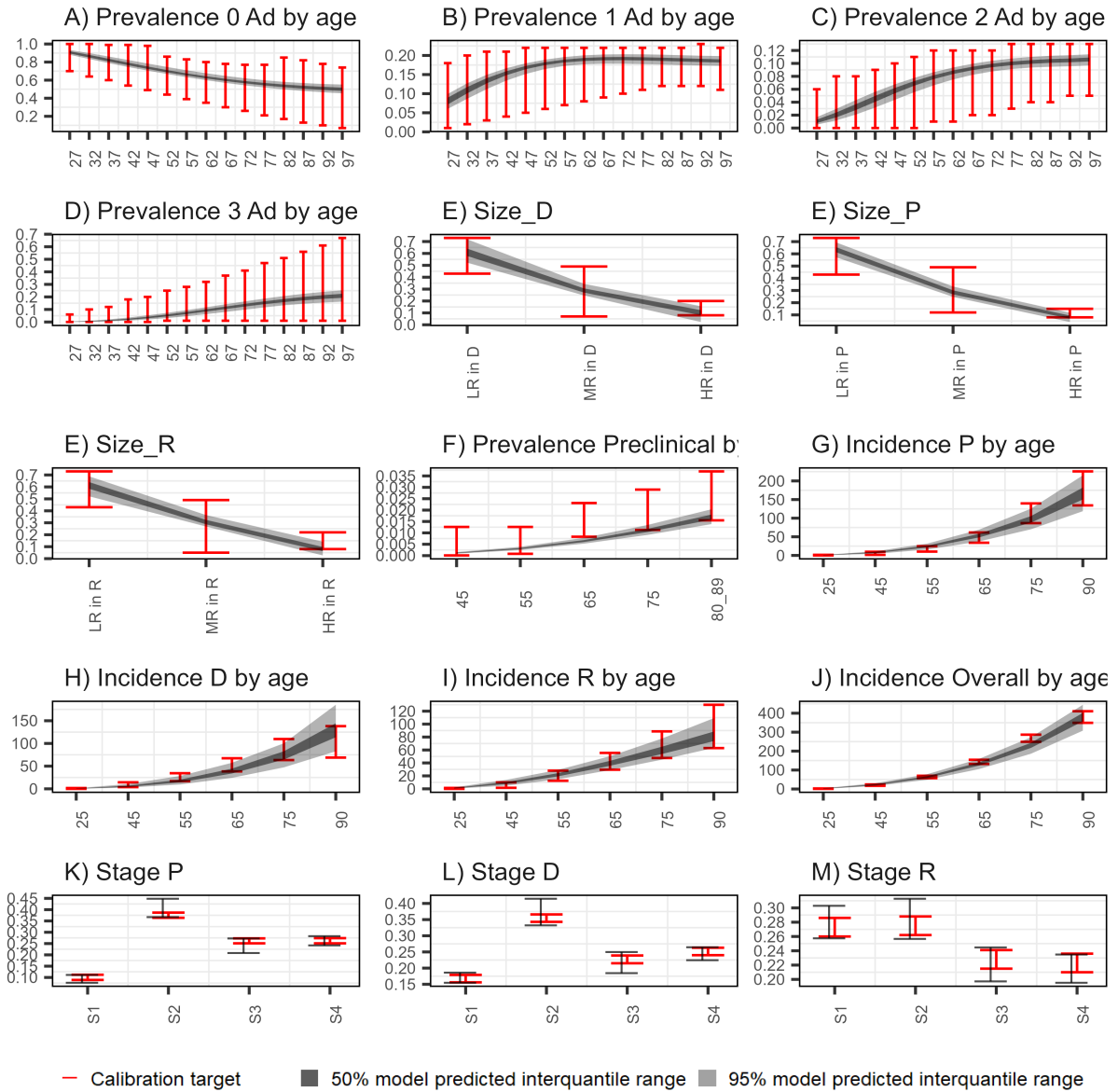
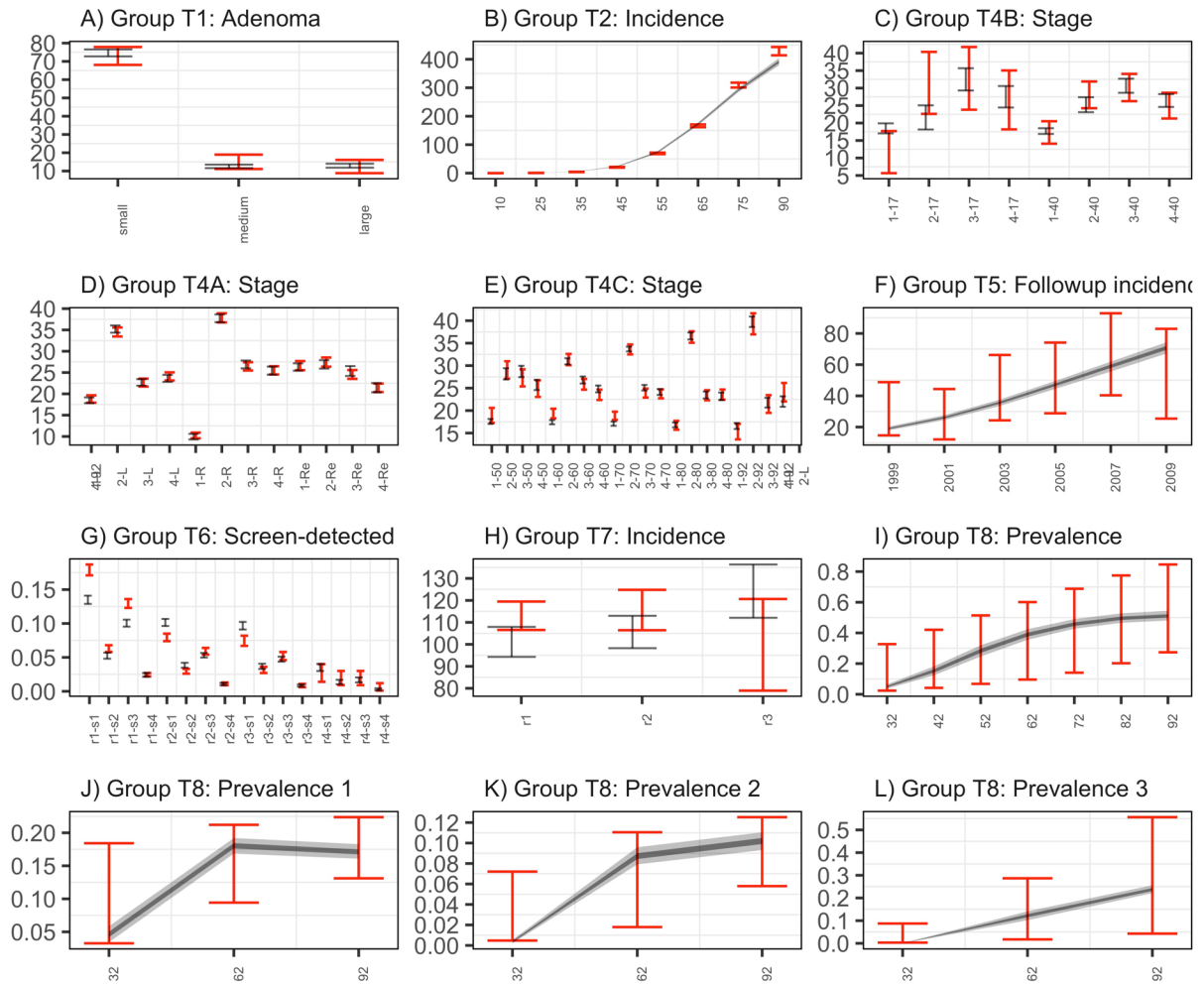


Figure S5. Internal validation for CRC models.

*S5.1 SimCRC*

## S5.2 MISCAN-Colon

### BayCANN - MISCAN

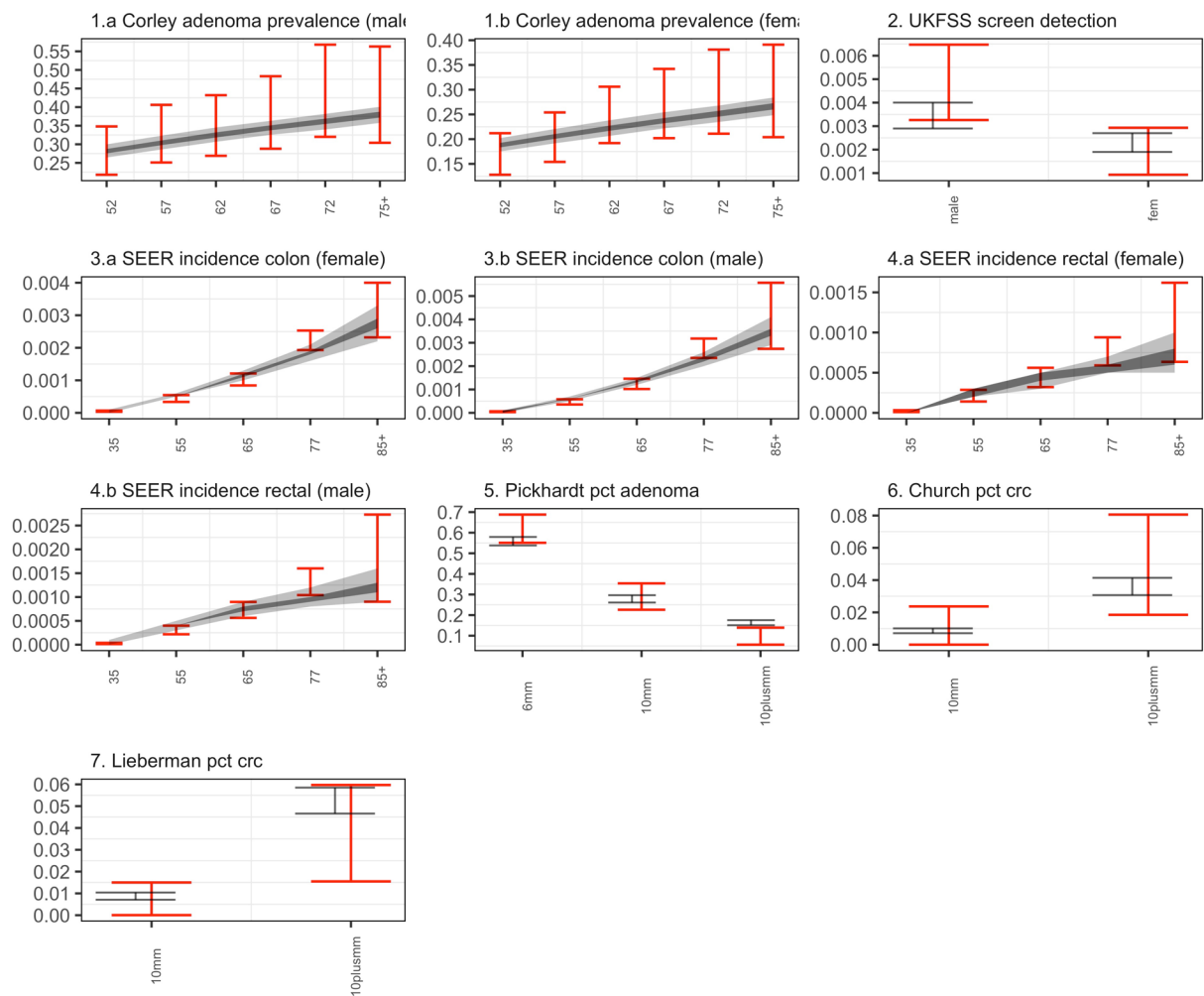


— Calibration target    ■ 50% model predicted interquantile range    ■ 95% model predicted interquantile range



### S5.3 CRC-SPIN

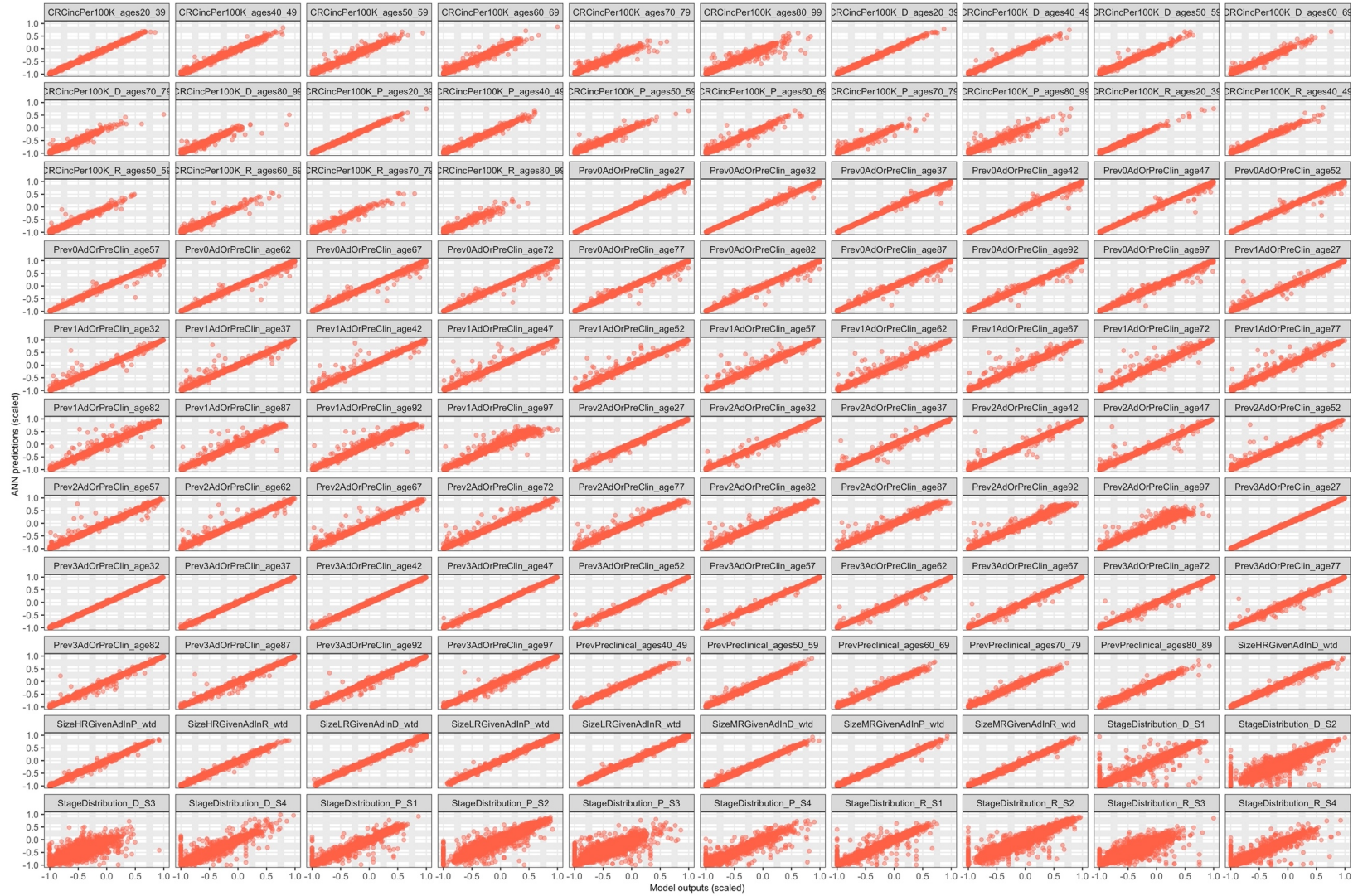
#### BayCANN - CRC SPIN



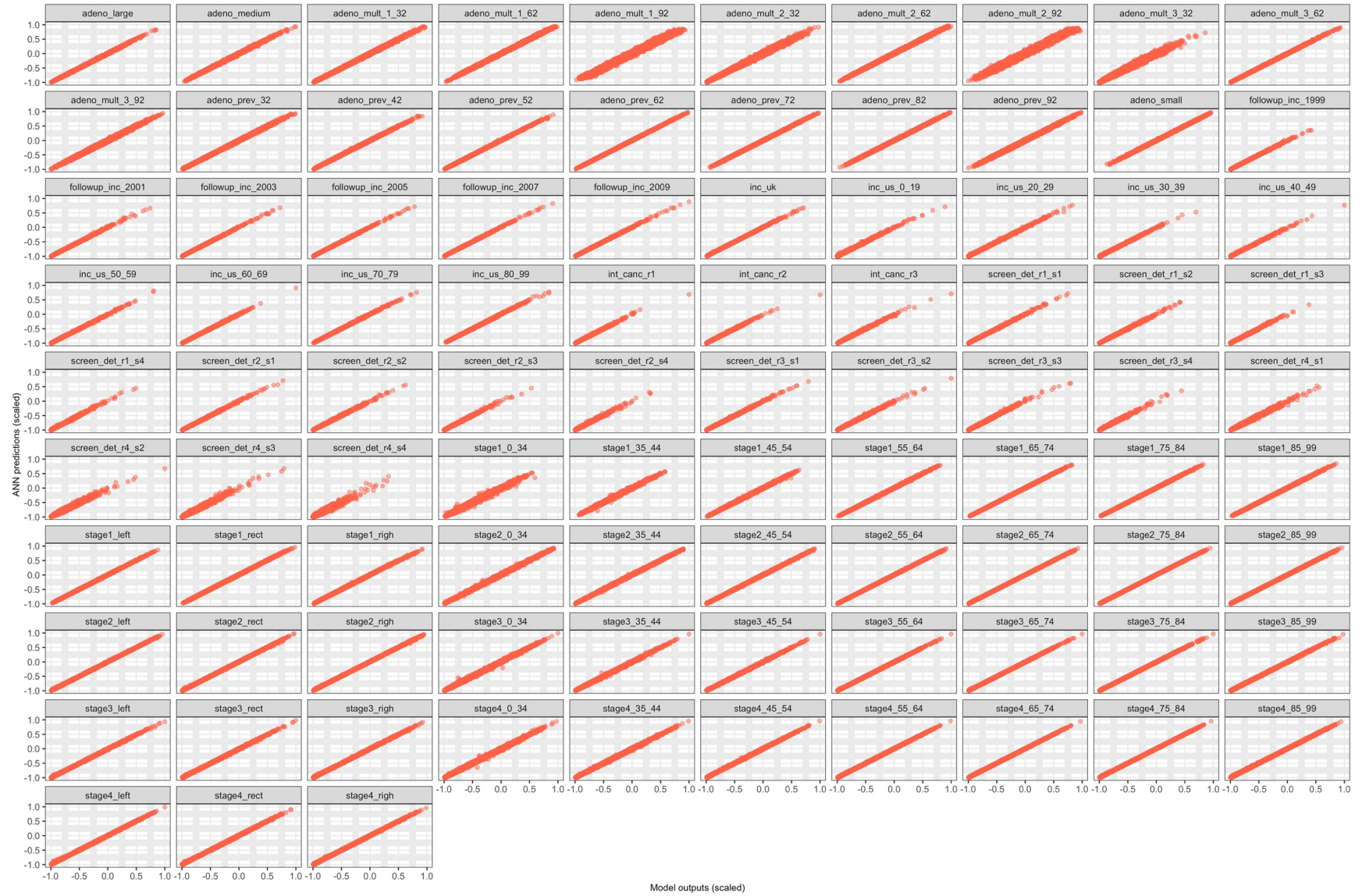
— Calibration target    ■ 50% model predicted interquantile range    ■ 95% model predicted interquantile range

**Figure S6. Prediction performance of model outputs for the three CRC models ( inputs and outputs are scaled within -1 to 1).**

### *S6.1 SimCRC*

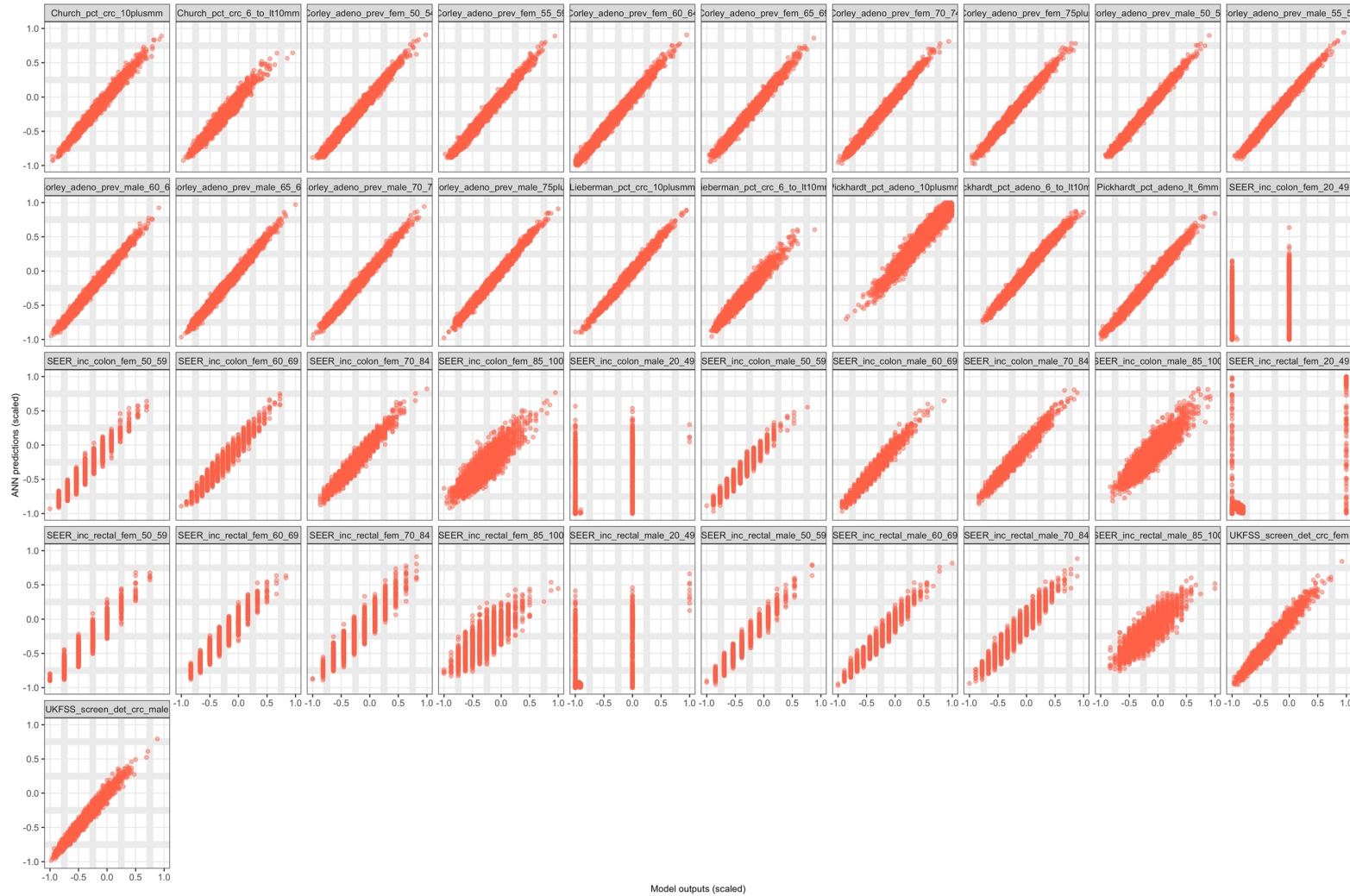


## S6.2 MISCAN-Colon

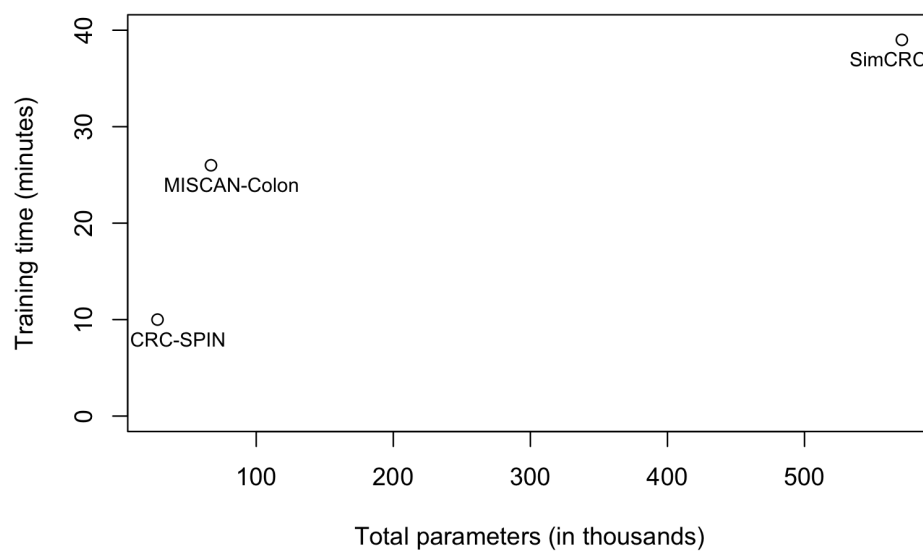




### S6.3 CRC-SPIN



Note: The early stop LHS draws for CRC-SPIN resulted in few outputs in low incidence levels, particularly in the age range of 20-49, as shown in the third and fourth row of the S6.3 figure.

**Figure S7. ANN training time vs. total parameters in the ANN****ANN structure and training time**

	Inputs	Hidden layers	Hidden nodes	Outputs	Total ANN trained parameters	Time (minutes)
SimCRC	30	4	360	110	571,070	39
MISCAN-Colon	37	4	114	93	67,467	26
CRC-SPIN	22	1	140	41	28,741	10

**Table S8. Calibrated parameters for the three CRC CISNET Models****Table S8.1 SimCRC**

<b>Parameter</b>	<b>Description</b>
AdOnset_Weibull_Shape	Shape parameter for the risk of developing an adenoma
AdOnset_Weibull_Scale	Scale parameter for the risk of developing an adenoma
AdOnset_PersonRisk_Gamma_Alpha	Individual risk parameter
AdGrowthMult_Variance	Variance for adenoma growth function
AdGrowthMult_ScaleTerm	Scale for adenoma growth function
Janoschek_Inflexion	Inflexion parameter for adenoma growth function
Janoschek_Rate_P	Rate parameter for growth function for an adenoma in the proximal colon
Janoschek_Rate_D	Rate parameter for growth function for an adenoma in the distal colon
Janoschek_Rate_R	Rate parameter for growth function for an adenoma in the rectum
CancerOnset_Weibull_Shape_P	Shape parameter for cancer onset function for an adenoma in the proximal colon
CancerOnset_Weibull_Shape_D	Shape parameter for cancer onset function for an adenoma in the distal colon
CancerOnset_Weibull_Shape_R	Shape parameter for cancer onset function for an adenoma in the rectum
CancerOnset_Weibull_Scale_P	Scale parameter for cancer onset function for an adenoma in the proximal colon
CancerOnset_Weibull_Scale_D	Scale parameter for cancer onset function for an adenoma in the distal colon
CancerOnset_Weibull_Scale_R	Scale parameter for cancer onset function for an adenoma in the rectum
Exp_Rate_PreclinProg_P	Rate parameter for progression of a preclinical cancer in the proximal colon
Exp_Rate_PreclinProg_D	Rate parameter for progression of a preclinical cancer in the distal colon
Exp_Rate_PreclinProg_R	Rate parameter for progression of a preclinical cancer in the rectum
pSxDetS1_P	Probability of detecting a stage I proximal colon cancer by symptoms
pSxDetS1_D	Probability of detecting a stage I distal colon cancer by symptoms
pSxDetS1_R	Probability of detecting a stage I rectal cancer by symptoms
pSxDetS2_P	Probability of detecting a stage II proximal colon cancer by symptoms
pSxDetS2_D	Probability of detecting a stage II distal colon cancer by symptoms
pSxDetS2_R	Probability of detecting a stage II rectal cancer by symptoms
pSxDetS3_P	Probability of detecting a stage III proximal colon cancer by symptoms
pSxDetS3_D	Probability of detecting a stage III distal colon cancer by symptoms
pSxDetS3_R	Probability of detecting a stage III rectal cancer by symptoms
pSxDetS4_P	Probability of detecting a stage IV proximal colon cancer by symptoms
pSxDetS4_D	Probability of detecting a stage IV distal colon cancer by symptoms
pSxDetS4_R	Probability of detecting a stage IV rectal cancer by symptoms

**Table S8.2 MISCAN-Colon**

<b>Parameter</b>	<b>description</b>
hazard_variance	The variance of the Gamma distribution.
hazard_mean_uk	Relative risk in the UK compared to the US.
hazard_mean_nl	Relative risk in the Netherlands compared to the US.
age_factors_k	The value of the horizontal asymptote of the generalized logistic function.
age_factors_logb	
age_factors_logv	A measure for the slope at the point of inflection of the generalized logistic function and the line symmetry in the point of inflection.
age_factors_M	The location of the point of inflection (x-coordinate).
non_progr_0	The probability that an adenoma is non-progressive at age 0
non_progr_45	The probability that an adenoma is non-progressive at age 45
non_progr_65	The probability that an adenoma is non-progressive at age 65
non_progr_100	The probability that an adenoma is non-progressive at age 100
small_progr	The probability that a progressive adenoma does not grow larger than 10mm before it becomes a preclinical cancer
small_non_progr	The probability that a non-progressive adenoma never grows larger than 10mm.
dwll_pcl_shape	Determines the shape of the Weibull distribution for all preclinical cancer states.
dwll_adn_factor	The ratios are multiplied with this parameter to determine the mean dwell time for each adenoma state.
dwll_pcl1	Scale of the Weibull distribution for the preclinical cancer state 1
dwll_pcl2	Scale of the Weibull distribution for the preclinical cancer state 2
dwll_pcl3	Scale of the Weibull distribution for the preclinical cancer state 3
dwll_pcl4	Scale of the Weibull distribution for the preclinical cancer state 4
trans_clin_loc_12	The probability that a preclinical cancer starts showing clinical symptoms in stage 1 for rectal cancers.
trans_clin_loc_124	The probability that a preclinical cancer starts showing clinical symptoms in stage 2 for cancers in the left colon.
trans_clin_loc_14	The probability that a preclinical cancer starts showing clinical symptoms in stage 1 for cancers in the right colon
trans_clin_loc_22	The probability that a preclinical cancer starts showing clinical symptoms in stage 2 for rectal cancers.
trans_clin_loc_224	The probability that a preclinical cancer starts showing clinical symptoms in stage 2 for cancers in the left colon.
trans_clin_loc_24	The probability that a preclinical cancer starts showing clinical symptoms in stage 2 for cancers in the right colon
trans_clin_loc_32	The probability that a preclinical cancer starts showing clinical symptoms in stage 3 for rectal cancers.
trans_clin_loc_324	The probability that a preclinical cancer starts showing clinical symptoms in stage 3 for cancers in the left colon.
trans_clin_loc_34	The probability that a preclinical cancer starts showing clinical symptoms in stage 3 for cancers in the right colon
trans_clin_age_Maxp1	For stage 1 cancers, the transition probability is represented by quadratic function of age
trans_clin_age_Scale1	Scale factor 1 for transition probability from stage 1

trans_clin_age_Scale2	Scale factor 2 for transition probability from stage 1
trans_clin_age_Pcl2100	Transition probabilities to from stage 2 clinical at age 100
trans_clin_age_Pcl20	Transition probabilities to from stage 2 clinical at age 0
trans_clin_age_Pcl3100	Transition probabilities from stage 3 to clinical at age 100
trans_clin_age_Pcl30	Transition probabilities from stage 3 to clinical at age 0
sensitivity_47FIT_a	The sensitivity of the FIT short before clinical diagnosis
sensitivity_47FIT_ratio	The sensitivity of the FIT long before clinical diagnosis



**Table S8.3 CRC-SPIN**

<b>Parameter</b>	<b>description</b>
ar.mean	Baseline log-risk
ar.sd	Standard dev., baseline log-risk
ar.fem	Female
ar.20to49	Age effect
ar.50to59	Age effect
ar.60to69	Age effect
ar.70plus	Age effect
growth.colon.beta1	Shape, colon
growth.colon.beta2	Scale, colon
growth.rectum.beta1	Shape, rectum
growth.rectum.beta2	Scale, rectum
richards.power	Richard's power
trans.prob.intercept	Intercept
trans.prob.fem	Female (vs male)
trans.prob.rectum	Rectal (vs colon)
trans.prob.fem.rectum	Female and Rectal
trans.prob.age	Age at initiation
trans.prob.agesq	Age at initiation sq.
trans.prob.sd	Standard dev., Trans. Prob.
mst.scale	Scale
mst.shape	Shape
mst.rectum	Rectal (vs colon)