

Supplemental Information

Overall O-Methylascorbate GWAS Manhattan Plot

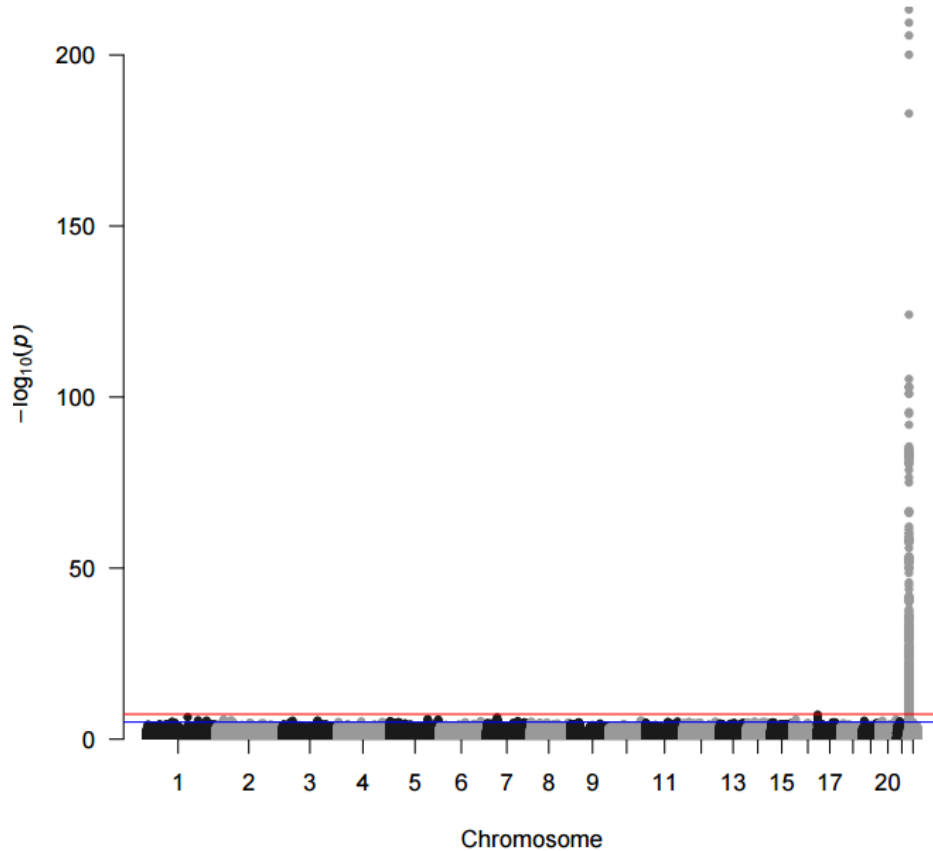


Figure S1. **O-methylascorbate** overall **results**. Results from the GWAS analysis using the FastGWA program from GCTA in the form of a Manhattan plot. GWAS conducted using a mixed linear model adjusted for age, sex, batch number, province, 10 principal components, and hours since last meal or drink which incorporated a genetic relatedness matrix to account for population stratification. Each point represents the p-value of a variant on the associated chromosome. The red line is the significant (5×10^{-8}) threshold and the blue line is the suggestive (1×10^{-5}) threshold.

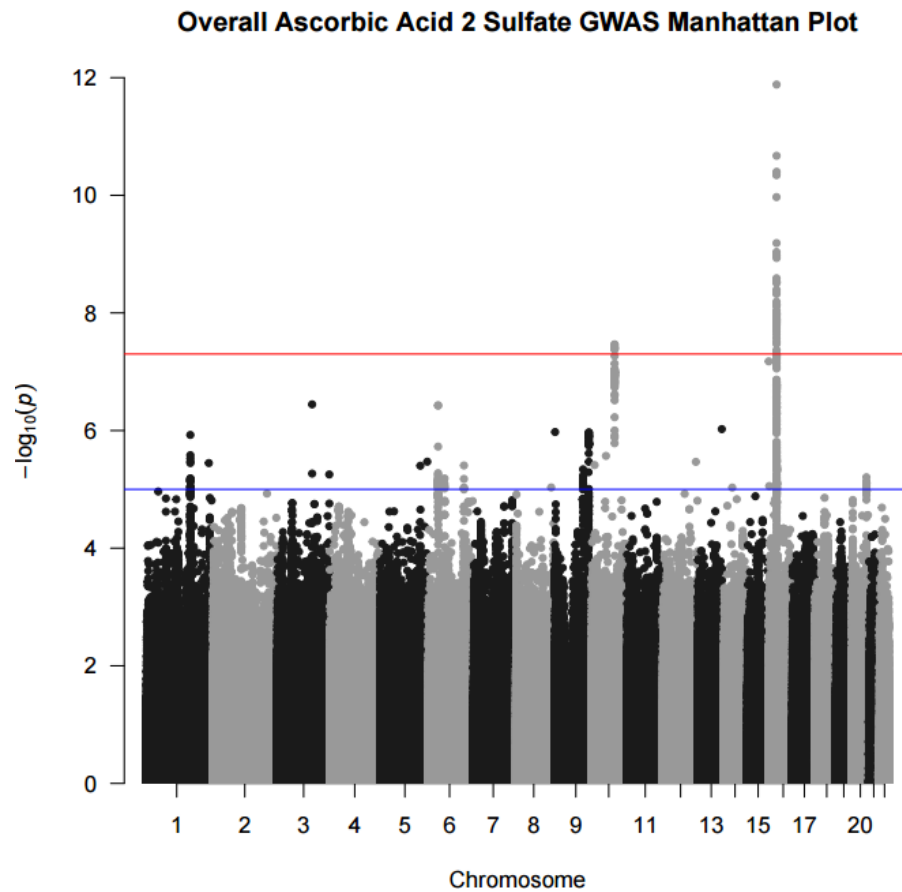


Figure S2. **Ascorbic acid 2 sulfate** overall **results**. Results from the GWAS analysis using the FastGWA program from GCTA in the form of a Manhattan plot. GWAS conducted using a mixed linear model adjusted for age, sex, batch number, province, 10 principal components, and hours since last meal or drink which incorporated a genetic relatedness matrix to account for population stratification. Each point represents the p-value of a variant on the associated chromosome. The red line is the significant (5×10^{-8}) threshold and the blue line is the suggestive (1×10^{-5}) threshold.