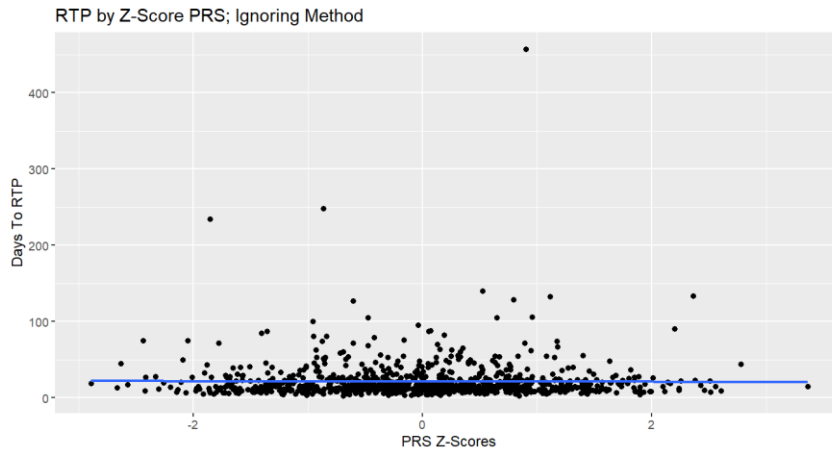
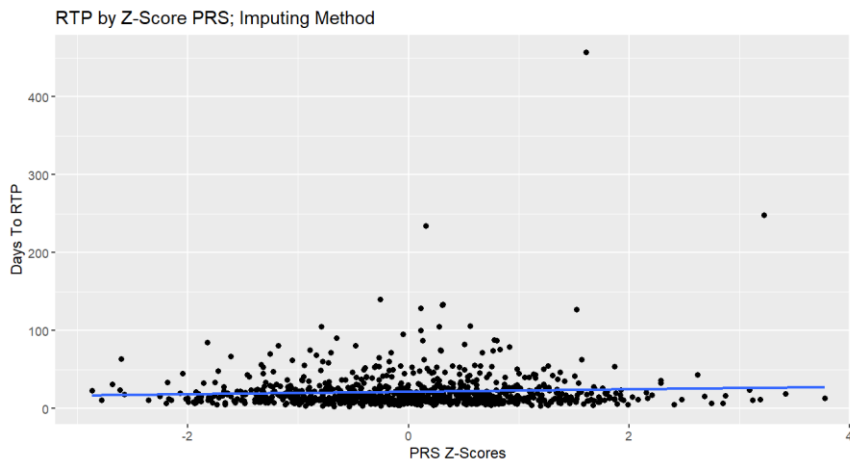


Supplementary fig. 1. Sensitivity analysis of missing SNP data handling methods. In (a) and (b), linear regressions to test the relationship between RTP and AD PRS were performed on the full 931 participants using two methods for handling missing SNP data: the ignoring method (PRS value of missing SNP is replaced with 0) (a) and the mean substitution method (PRS value of missing SNP is replaced with the mean score for that SNP from all other participants) (b). For the ignoring method, there was no significant relationship ($p = 0.8152$). The relationship approached significance using the mean substitution method ($p = 0.05314$). These tests were repeated using a subsample of participants with outliers removed by R (c and d). There were no significant relationships using the ignoring method ($p = 0.8605$) (c) or the mean substitution method ($p = 0.7352$) (d).

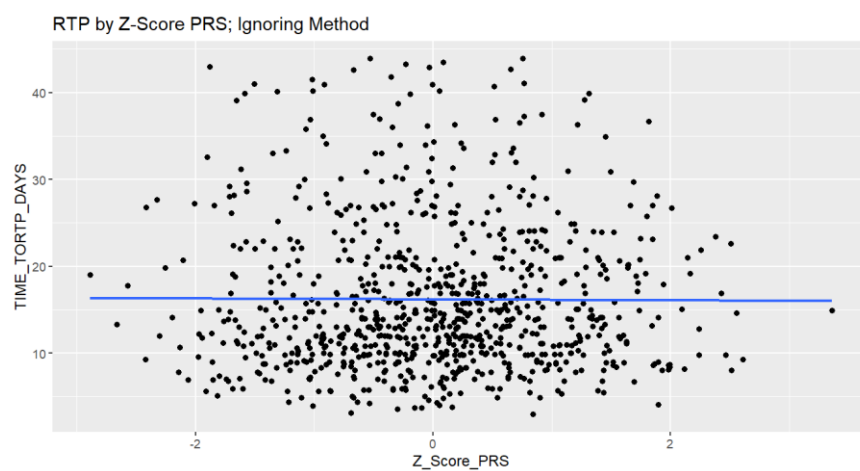
a



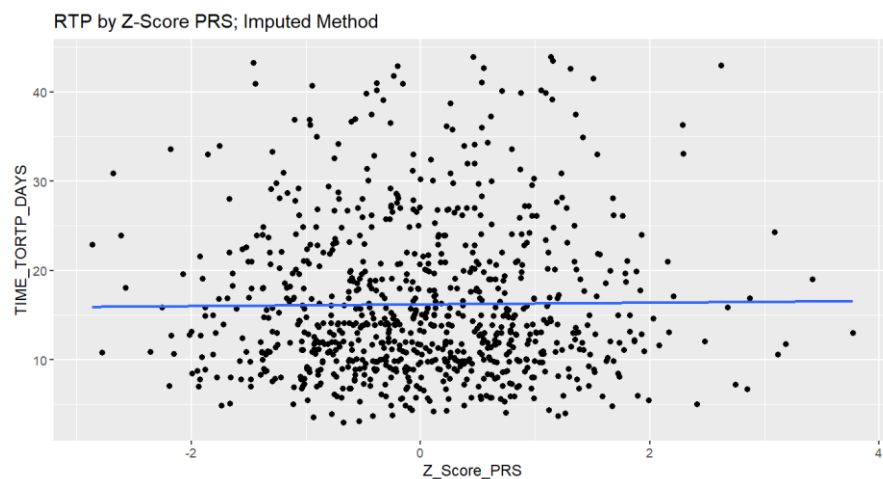
b



c

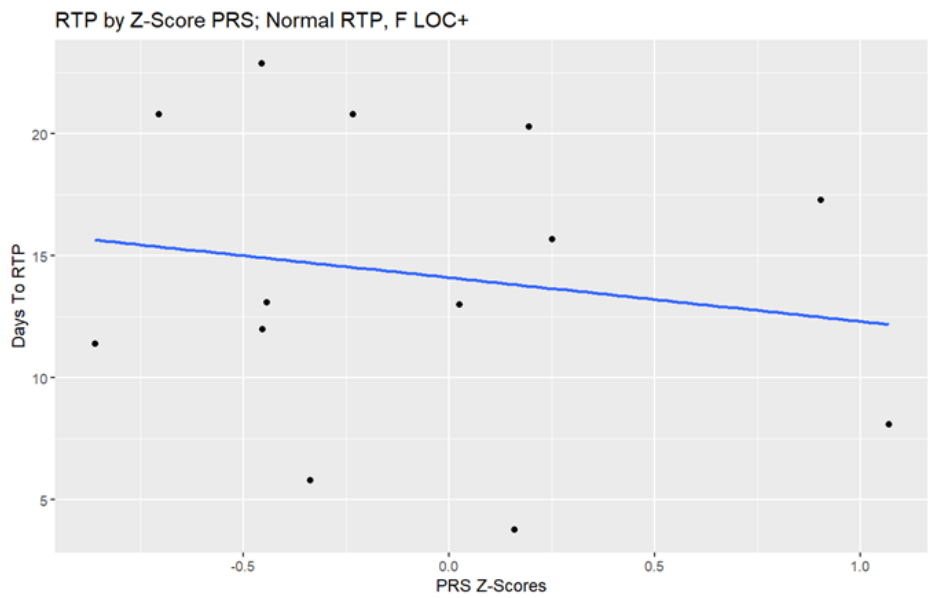


d

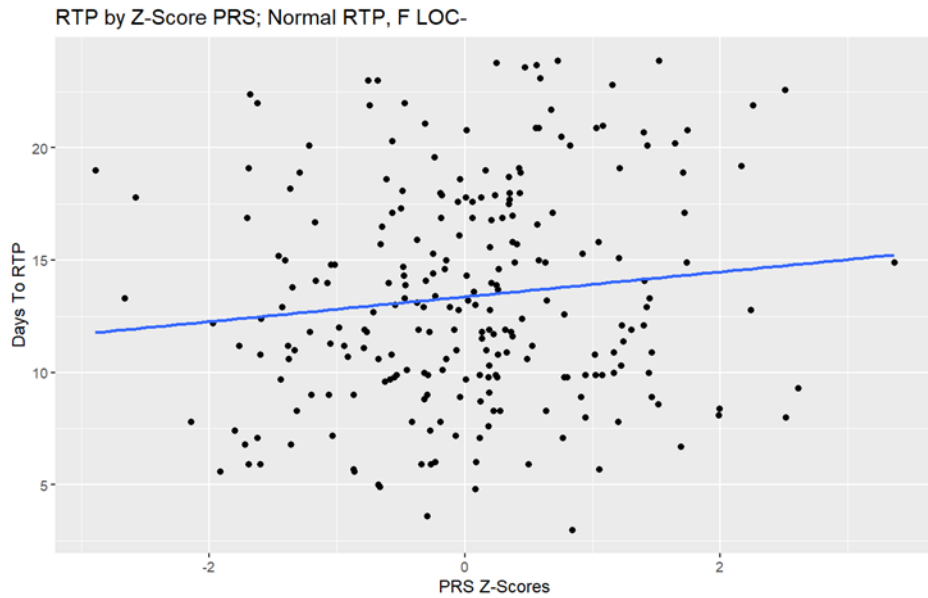


Supplementary fig. 2. AD PRS & normal RTP interval in F LOC+ (a), F LOC- (b), M LOC+ (c), and M LOC- (d) participant subgroups.

a

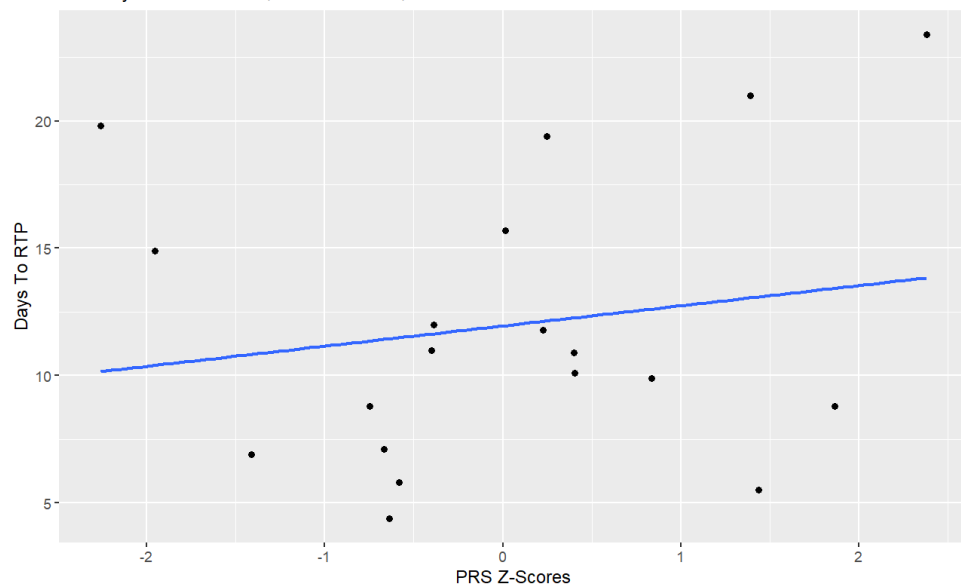


b



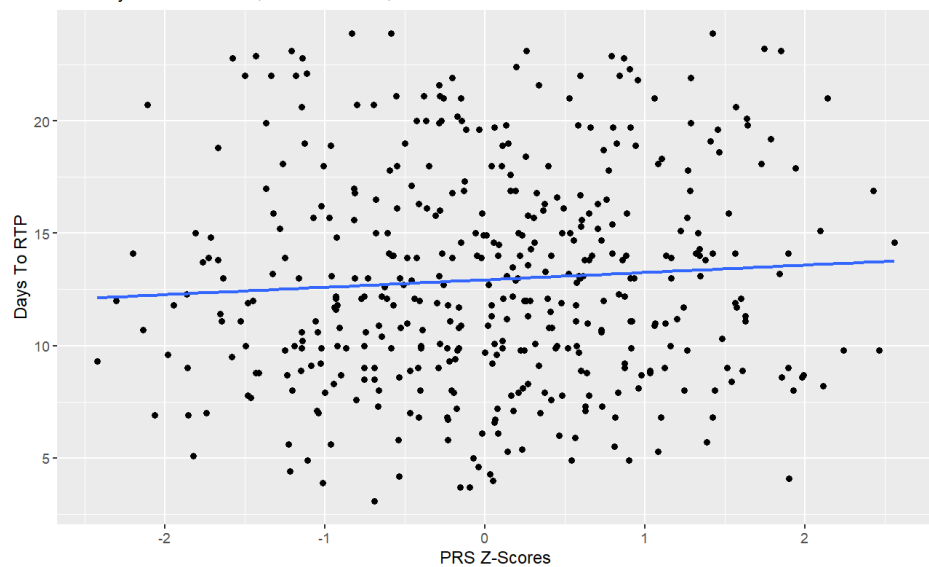
c

RTP by Z-Score PRS; Normal RTP, M LOC+



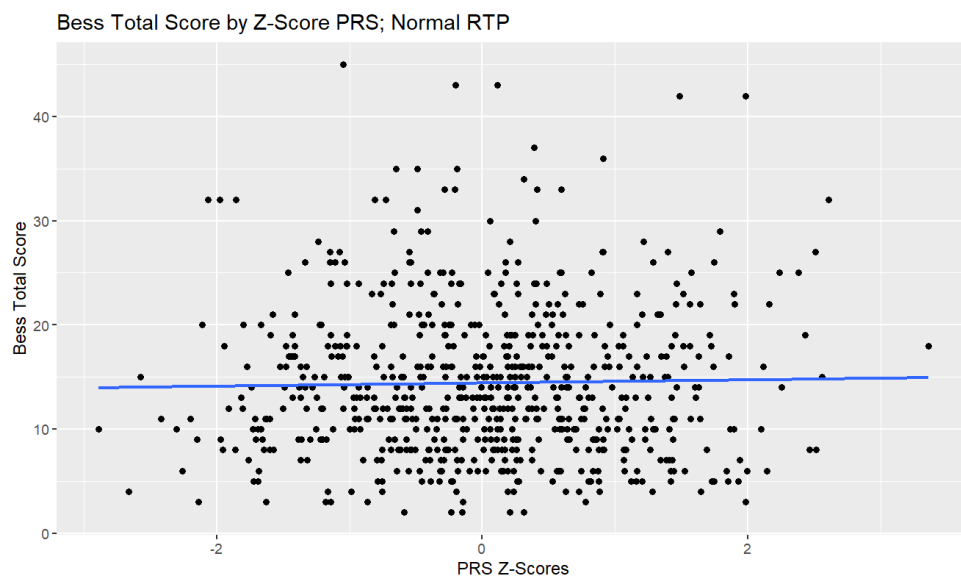
d

RTP by Z-Score PRS; Normal RTP, M LOC-

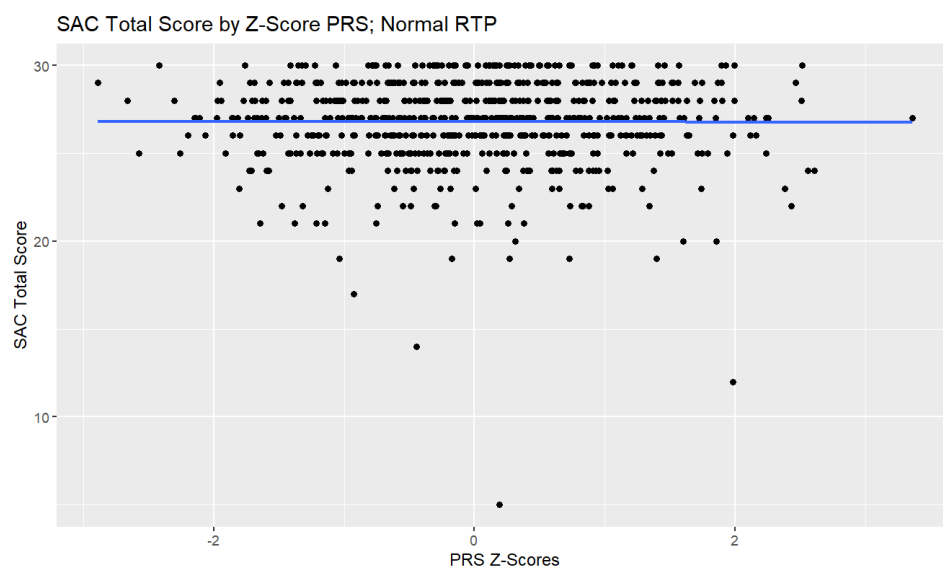


Supplementary fig. 3. AD PRS & total scores on BESS ($p = 0.58$) (a), total scores on SAC ($p = 0.937$) (b), SCAT symptom severity scores (SCATSEV; $p = 0.746$) (c), and SCAT total number of symptom scores (SCATSYMP; $p = 0.969$) (d) in normal RTP (<24 days) data subset.

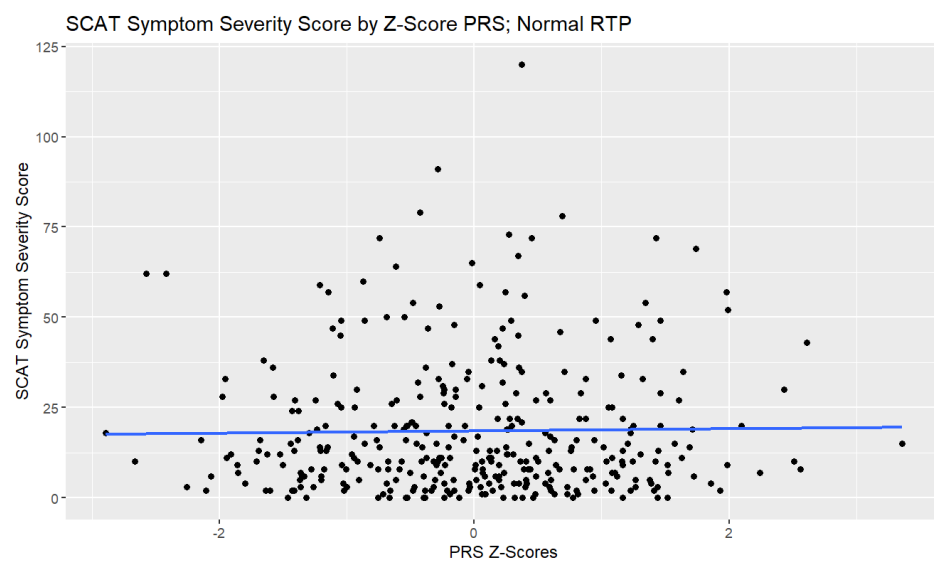
a



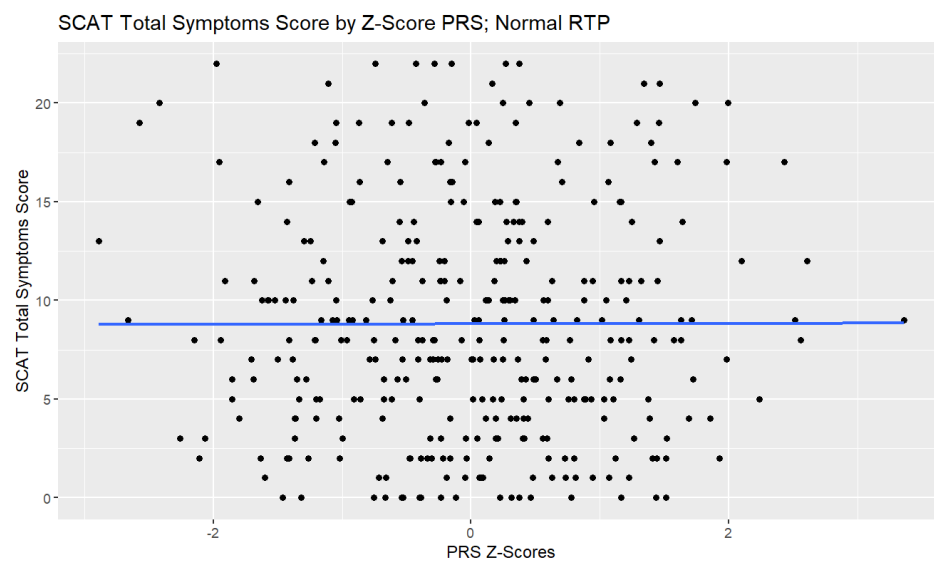
b



c

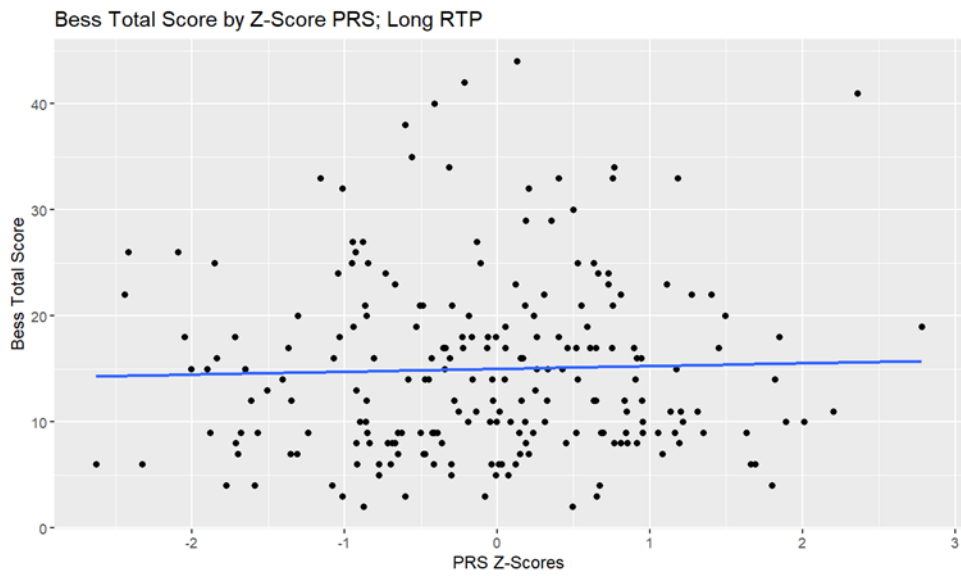


d

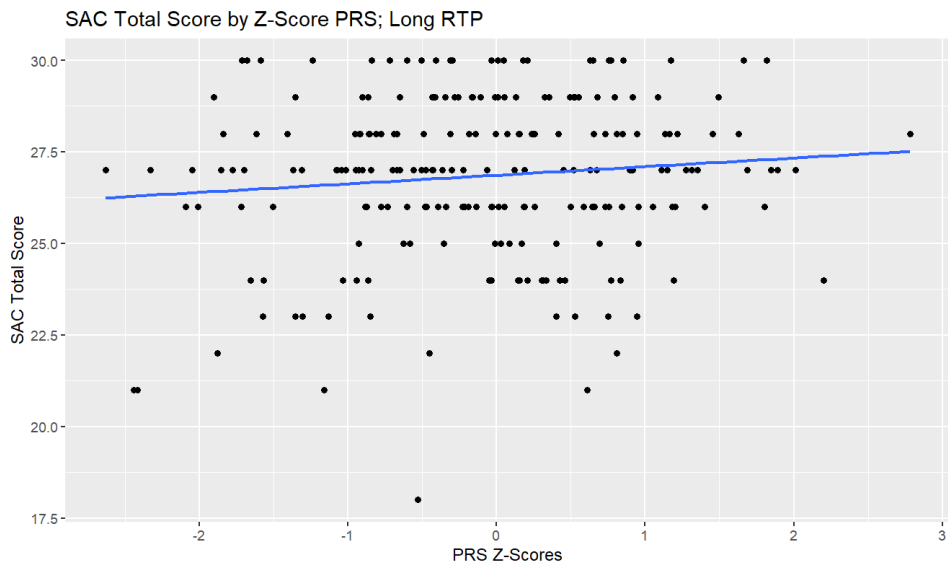


Supplementary fig. 4. AD PRS & total scores on BESS ($p = 0.645$) (a), total scores on SAC ($p = 0.117$) (b), SCAT symptom severity scores (SCATSEV; $p = 0.465$) (c), and SCAT total number of symptom scores (SCATSYMP; $p = 0.578$) (d) in long RTP (>24 days) data subset.

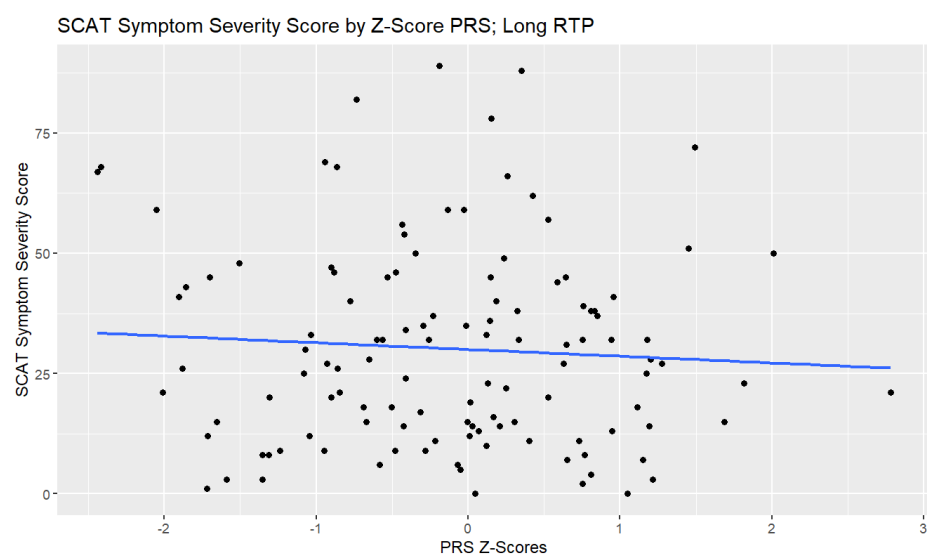
a



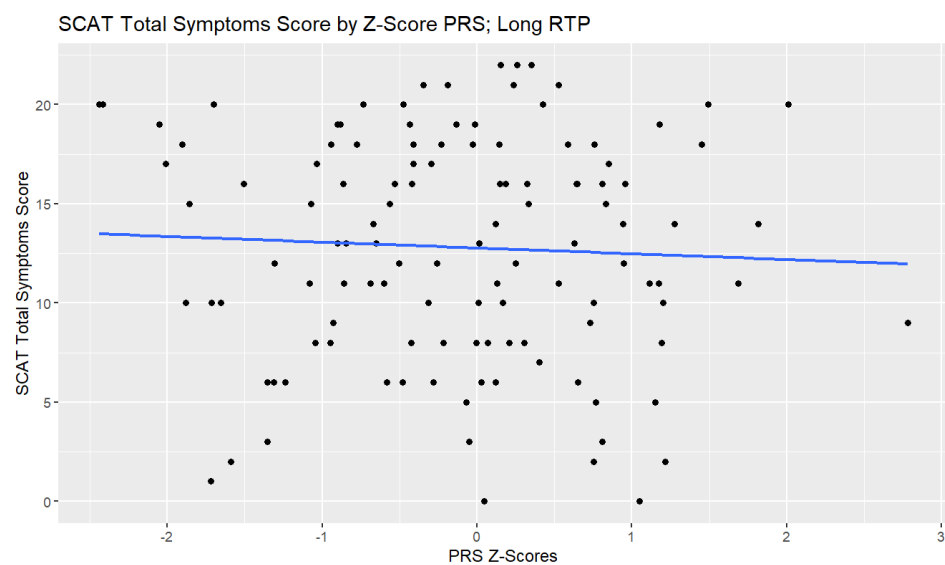
b



c

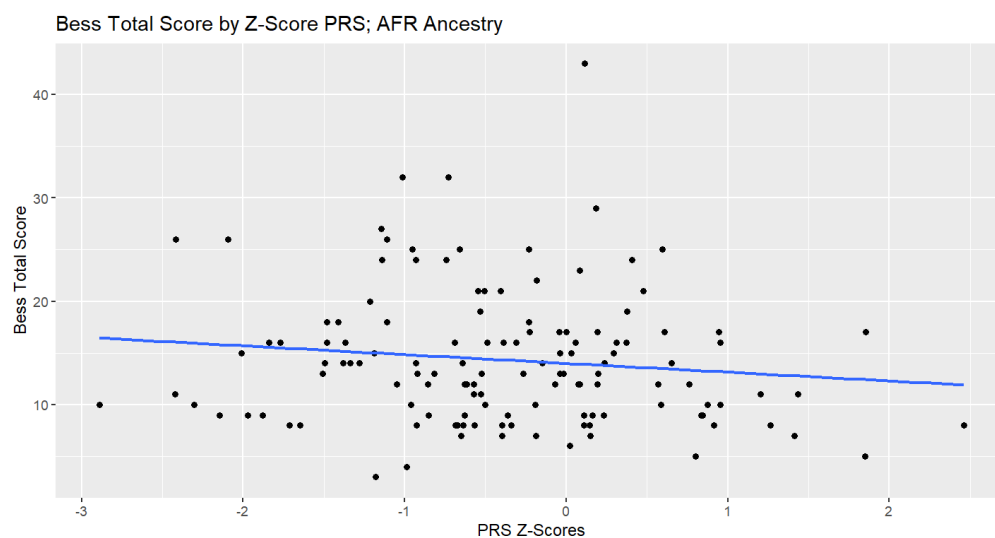


d

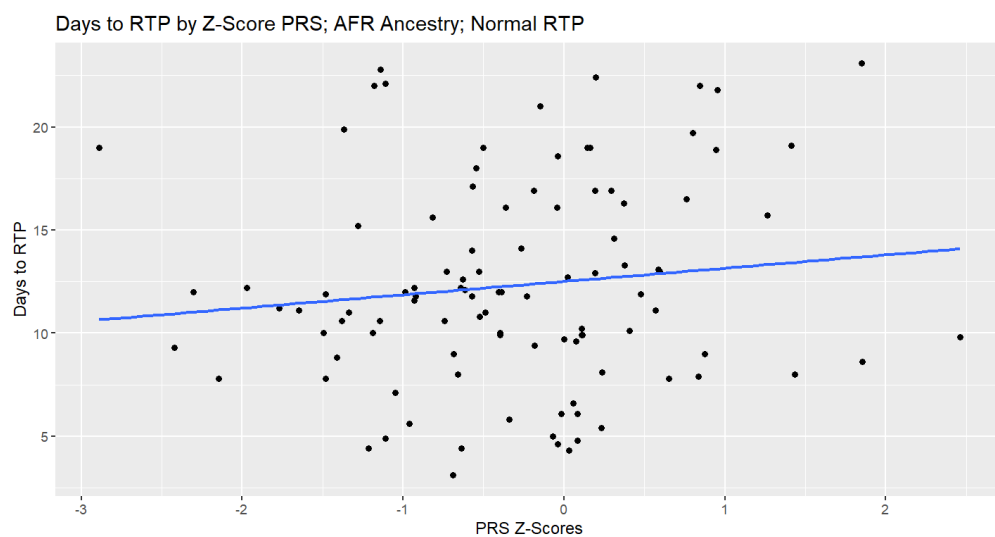


Supplementary fig. 5. AD PRS and total scores on BESS ($p = 0.163$) (a), days to normal RTP ($p = 0.221$) (b), days to long RTP ($p = 0.446$) (c), total scores on SAC ($p = 0.715$) (d), and SCAT symptom severity scores (SCATSEV; $p = 0.144$) (e) in participants of African genetic ancestry.

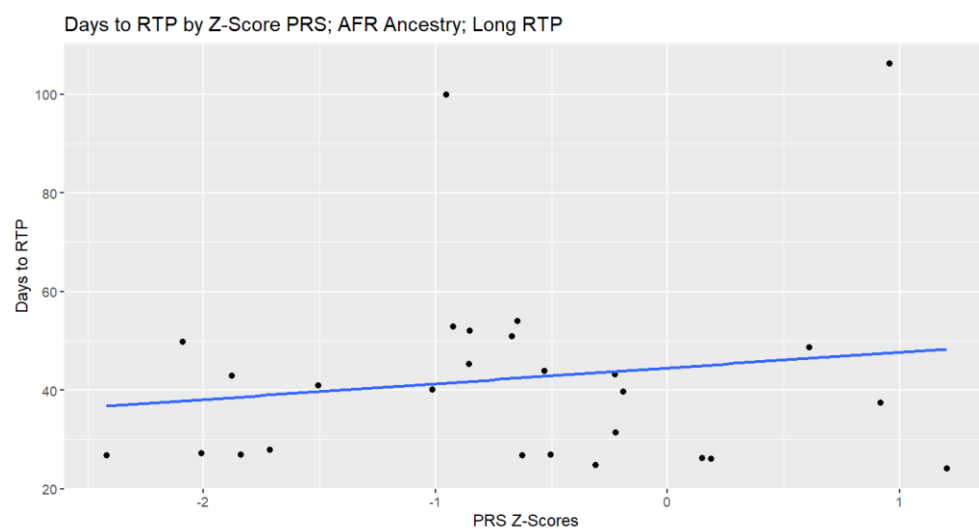
a



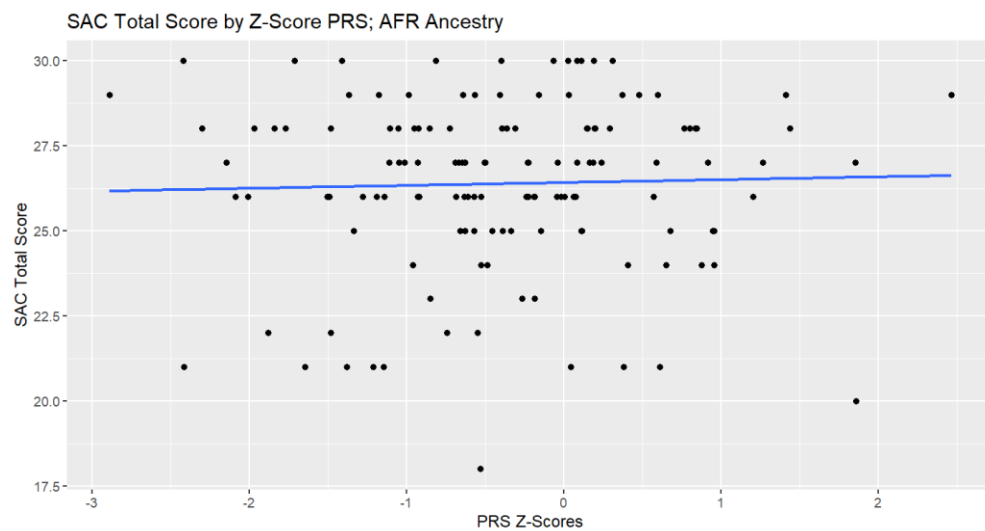
b



c



d



c

