

Supplementary Information

Supplement to:

An emergent, high-fatality lung disease in systemic juvenile arthritis

An emergent, high-fatality lung disease in systemic juvenile arthritis

Supplementary information

Supplementary Methods	4
Case definition	4
Clinical data collection	4
Analysis of computed tomography (CT) scans of the chest	4
Analysis of lung biopsy tissue and bronchoalveolar lavage fluid	5
Genetic analysis	5
Patient genome data processing	5
Variant annotation	5
Variant filtering	6
Annotation of rare (MAF <5%) variants in relevant genes using HGMD	6
Data analysis	6
Propensity Matching	6
Comparisons after matching	6
Clinical feature correlation	7
Severity features in LD cohort and published sJIA cohorts	7
GTEx data analysis	7
References for Supplementary Methods	8
 Supplementary Tables	 11
Table S1: A. Definitions given to case reporters; B. Definitions used for data analysis	11
Table S2: Summary statistics of clinical features prior to diagnosis of lung disease	12
Table S3: Summary statistics of clinical features associated with lung disease	13
Table S4: Summary statistics of chest CT and histopathology findings	14
Table S5A: Rare variants in hereditary PAP genes detected by WES	15
Table S5B: Rare variants in HLH/MAS-related genes detected by WES	16
Table S6: Features of severity in LD cohort compared to published sJIA cohorts	17
Table S7: Summary statistics of disease outcomes at data close	18
Table S8: Cases scoring as DRESS by high RegiSCAR score	19
Supplementary Figures	20
Figure S1: Study design	20
Figure S2: Distribution of diagnosis dates in the lung disease cases	21
Figure S3: Propensity matching between the lung disease cases and sJIA control cases	22
in CARRA Registry (CR) to investigate temporal changes in serum ferritin	
Figure S4: Trends in serum ferritin among the lung disease cases and sJIA controls	23

Figure S5: Histopathologic findings associated with PAP/ELP; histologic spectrum of lung disease in sJIA	24
Figure S6: Early onset sJIA, lung disease and PAP/ELP; age distribution of sJIA onset in cases in the LD cohort and control sJIA cases in CR	25
Figure S7: Proportion of reported lung disease cases exposed to IL-1/IL-6 inhibitors from 1970 to mid 2017	26
Figure S8: Survival outcomes of sJIA-LD	27
Figure S9: Multiple logistic regression (MLR) models for identified characteristics associated with PAP/ELP in the sJIA-LD cohort	28
Figure S10: RNA abundance of IL-1/IL-6 across organs	29
References for Supplementary Figures and Tables	30

Supplementary Methods

Case definition

We defined sJIA as: age of onset 6 months to 18 years, fever for at least two weeks, arthritis observed by a physician, and at least one of the following: evanescent rash, generalized lymphadenopathy, hepato- and/or splenomegaly, or serositis.¹ Cases with cardinal features of other forms of JIA (e.g., rheumatoid factor+) were excluded. Median follow-up was 3.9 years (IQR 1.6y-5.7y) from sJIA diagnosis. Cases beginning treatment with anti-IL-1/IL-6 at least 3 weeks prior to lung disease diagnosis are identified as pre-exposed. 6/61 cases (lung disease diagnosis 1/2006-1/2011) were previously reported in Kimura et al². In 46/61 cases, lung disease was diagnosed from Feb. 2011 to mid-2017 and not previously reported (**figure S2**). Propensity matching (see *Data analysis*) used CARRA Registry (CR)³ cases with sJIA onset after January 1, 2008, which removed previously reported cases.

Clinical data collection

Data were collected and managed using REDCap electronic data capture tools,⁴ hosted at Stanford University. All cases provided data for sJIA onset and lung disease detection; 90% provided complete visit entries, with some missing laboratory values. For analysis of case location, US Census Bureau population-balanced regions were used (www2.census.gov/geo/pdfs/maps-data/maps/reference/us_regdiv.pdf). Clinical visit-associated data were obtained at the date chosen by the case reporter to best represent when lung disease diagnosed and at the following time points: at sJIA onset, one year after sJIA diagnosis, 12, 6, 3 and 1 month prior to lung disease diagnosis, 6, 12 and 24 months after lung disease (when available) and the most recent visit at the time of case entry. At each time point, we queried: day of life, height, weight and presence of arthritis, medications, dosing of IL-1 and IL-6 inhibitors and oral steroids, gap in steroids (oral or IV) or gap in biologic medications for >6 weeks during the prior interval, ferritin level, absolute lymphocyte count (ALC), hemoglobin, overt MAS. Exposure to anti-IL-1 or anti-IL-6 was captured within 2 weeks of medication start. Other data included eosinophils (absolute number and/or % WBC at peak eosinophilia), drug reactions, clinical evaluations for pulmonary hypertension, infectious diseases, and cell counts from bronchial lavage fluid when available, bacterial, fungal (including 1,3 beta d glucan) and viral pathogens in blood, nasopharyngeal swab, BAL, or lung biopsies, as part of lung disease evaluation. Direct immuno-fluorescence (DFA) for *Pneumocystis jirovecii* was performed (GD) on 17 lung biopsy specimens, using antibodies (#32515) from Bio-Rad (Hercules, CA). Definitions provided to case reporters are shown on **Table S1**.

Analysis of computed tomography (CT) scans of the chest

The first chest CT scan, any scan from the next 2 months or a later scan if closer to the time of biopsy were collected from 58/61 subjects and reviewed for radiologic features after de-identification. The anonymized CTs were encoded in DICOM format for review by a CAQ-certified pediatric radiologist (RPG) with particular expertise in childhood diffuse lung disease. CT exams were noted as performed with or without intravenous contrast and systematically reviewed for the presence and anatomic distribution of pulmonary findings: consolidation, ground glass

opacities, crazy paving, nodules, centrilobular tree-in-bud opacities, septal thickening, cysts, honeycombing, architectural distortion, and bronchiectasis. Extra-pulmonary findings of lymphadenopathy (+/- hyperenhancement), pleural effusion, pericardial effusion, splenomegaly, and pulmonary artery enlargement (defined as main pulmonary artery:ascending aorta size ratio >1.25⁵) were also noted when assessable. A second radiologist with expertise in adult lung disease independently reviewed 76% of the CTs. Reviews by the two radiologists were highly concordant.

Analysis of lung biopsy tissue and bronchoalveolar lavage fluid

De-identified, recut unstained slides and pathology reports from the originating institution were available in 36 cases, except 1 in which only the pathology report was provided. Hematoxylin and eosin (H&E) slides were systematically reviewed by an experienced pediatric pulmonary pathologist (GD), and the major features were tabulated, including primary histologic pattern, evidence of an infectious process, vascular changes, grade and nature of inflammation and degree of fibrosis/remodeling. Special stains (Movat pentachrome, Grocott's methenamine silver (GMS), periodic Acid Schiff (PAS) stain with and without diastase, iron stain) were obtained when indicated to highlight above findings. All findings were corroborated with the original pathology report when available, and there were no discrepant findings. Ten cases had electron microscopic examination, and the original grids or submitted pictures were reviewed in conjunction with the report. In 4 cases with pulmonary alveolar proteinosis/endogenous lipoid pneumonia (PAP/ELP), staining with surfactant related immunostains (surfactant protein B, pro-surfactant protein C, [both from EMD Millipore, Burlington MA], surfactant protein D, thyroid transcription factor-1 (TTF-1; expressed in type II pneumocytes; both reagents from ThermoFisher Scientific, Waltham MA), ATP binding cassette subfamily A member 3 (ABCA-3; critical for lamellar body formation and surfactant function; Seven Hills Bioreagents, Cincinnati, OH) was performed on the Ventana BenchMark ULTRA (Indianapolis, IN) using sections from paraffin-embedded tissue.

Genetic analysis

Patient genome data processing

For 17 subjects, sequencing reads in FASTQ files to the GRCh37/hg19 assembly of the human genome were mapped using the Burrows-Wheeler Aligner MEM algorithm (bwa-mem), version 0.7.10-r789, with default parameters⁶. Picard Tools version 1.105 were used to mark duplicate reads [<http://broadinstitute.github.io/picard/>], followed by variant calling using GATK (Genome Analysis Toolkit), version 3.4-46-gbc02625, following the HaplotypeCaller workflow in the Genome Analysis Toolkit Best Practices (including insertion/deletion realignment and base quality score recalibration).⁷ For 3 patients, VCF files were provided by the sequencing facility.

Variant annotation

ANNOVAR, version 527, was used to annotate variants with a predicted effect on protein-coding genes from the ENSEMBL version 75 gene set. Variants were annotated with an allele frequency in each subpopulation in the Exome Aggregation Consortium (ExAC) and 1000 Genomes Project control human populations.⁸⁻¹¹ Variants were also annotated with a likelihood of being pathogenic using well known and publicly available missense pathogenicity predictors, SIFT¹², Polyphen-2¹³ and M-CAP.¹⁴ For each variant, a label of "likely benign" was

assigned if the variant was common (>1% allele frequency in any subpopulation) or if the M-CAP score was less than 0.025 and a label of “possibly pathogenic” was assigned in all other cases. Variant descriptions relative to the given RefSeq transcript are in accordance with HGVS recommendations.¹⁵

Variant filtering

Variants were filtered to retain only rare variants [maximum allele frequency (MAF)<5% in any 1000 Genomes Project or Exome Aggregation Consortium population] that were predicted to be missense, truncating, in-frame insertion or deletion, stop codon loss, or splice-site disrupting, as previously described.¹⁶

Annotation of rare (MAF <5%) variants in relevant genes using HGMD

Human Gene Mutation Database (HGMD) is a database containing disease-causing and disease-associated genetic variants curated from primary literature. For each rare variant in relevant genes, variant chromosome, position, reference and alternative allele in HGMD version 2018.01¹⁷ was identified and HGMD classification was noted (see http://www.hgmd.cf.ac.uk/docs/new_back.html for more explanation on lines of evidence used by HGMD for pathological authenticity). One HGMD frameshift variant at the same position as the frameshift found in one case, but with a different nucleotide change, was also noted.

Data analysis

Propensity matching

For case/control comparisons for serum ferritin values, propensity matching, calculated based on a multiple logistic regression covering a set of potential confounders, was used to select the closest controls from the CR for each time window (**figure S3**). The matching was performed by MatchIt package in CRAN.¹⁸ As the treatment strategy evolved significantly after the initial report (2005) of effectiveness of anti-IL-1 (anakinra) therapy, the between- and within-cohort heterogeneity may confound the comparisons. Also, CR registry only captures patients seen after 2015, causing enrichment of subjects with chronic inflammation in patients with sJIA onset date far before 2015. To provide a current analysis of the sJIA-LD risk factors and reduce the intrinsic bias within CR, we included patients (filtering on both sJIA controls and sJIA-LDs) with a sJIA onset date after Jan 1, 2008 for propensity matching analysis. CR sJIA, N=386/471, and sJIA-LD, N=46/61, passed the inclusion criteria.

Comparisons after matching

After matching, we performed several direct comparisons between controls and cases for an intuitive account of the differences. We applied Fisher’s exact tests for categorical values and Wilcoxon rank sum tests on continuous values. The matching process often will leave residual variances between cases and controls, which could marginally confound the result. Thus, we performed additional multiple logistic/linear regression analysis, in which the propensity score was included as a co-variate to adjust for residual variances from confounders. For each regression, a VIF score was calculated to confirm lack of prominent disruption from collinearity

(VIF scores were always below 5) when estimating the regression coefficients. Significance in case/control comparisons was assessed by Wilcoxon rank sum test for continuous variables.

Clinical feature correlation

Associations between unusual clinical features and pre-exposure to IL-1/IL-6 inhibitors (**figure 4B**) or between unusual clinical features and MAS at sJIA onset (**figure 4G**) were analyzed. Significance was assessed by Fisher's exact test. The Benjamini-Hochberg adjusted P value is provided as an estimate of the false discovery rate (FDR).

Severity features in LD cohort and published sJIA cohorts

To compare severity-related features in pre-exposed LD cases and published sJIA cohorts we defined 5 features. For LD cases, the following definitions were used: MAS per Ravelli;¹⁹ persistent arthritis per case reporter; cyclosporine or tacrolimus use that occurred ≥ 6 months before LD diagnosis; "ever off" steroids required ≥ 6 weeks without steroids; treatment response required prednisone 0 to $<0.15\text{mg/kg/d}$, normal ferritin and allowed arthritis. 4 pre-exposed LD cases were omitted: 2 for <6 months duration before LD diagnosis; 2 for missing data. **Figure 4C:** LD cases compared to Janow et al.²⁰ In the Janow study, treatment response was per Wallace criteria.²¹ **Figure 4D:** LD cases with sJIA onset $<1.5\text{y}$, compared to comparable age group in Russo et al.²² In the Russo study, treatment response was per Wallace criteria.²¹ **Figure 4E:** LD cases with sJIA onset $>1.5\text{y}$, compared to comparable age group in Russo et. al.²² **Figure 4F:** LD cases treated with IL-1/IL-6 inhibitors for ≥ 6 months compared to comparable groups in Pardeo et al.²³ and Nigrovic et. al.²⁴ In the Pardeo study, treatment response is per Wallace criteria.²¹ No bar indicates unavailable data. For the Nigrovic study, treatment response=minimal residual symptoms, normal laboratory tests, on anakinra only. Characteristics of published cohorts (multi vs single center, number of cases per group, sJIA onset age, sJIA duration) are on Supplementary **Table S6**.

GTEX data analysis

RNAseq data was taken from the GTEx database²⁵ and the gene counts, gene samples, and annotations were extracted. As raw RNAseq data were not normally distributed, log-CPM values were computed, and only genes with a log-CPM value > 0 in >100 samples were kept, reducing the number of genes from 65,000 to 30,000. We assigned -8 (the value at the tail of the distribution) for log-CPM of zero count values. Normalization by trimmed mean of M-values (TMM)²⁶ was performed using the calcNormFactors function in edgeR.²⁷ For annotations, we manually curated the organs so that each falls into the 10 categories present in **figure S9**.

References for Supplementary Methods

1. DeWitt EM, Kimura Y, Beukelman T, et al. Consensus treatment plans for new-onset systemic juvenile idiopathic arthritis. *Arthritis Care Res (Hoboken)* 2012;64(7):1001-10. doi: 10.1002/acr.21625
2. Kimura Y, Weiss JE, Haroldson KL, et al. Pulmonary hypertension and other potentially fatal pulmonary complications in systemic juvenile idiopathic arthritis. *Arthritis Care Res (Hoboken)* 2013;65(5):745-52. doi: 10.1002/acr.21889 [published Online First: 2012/11/10]
3. Beukelman T, Kimura Y, Ilowite NT, et al. The new Childhood Arthritis and Rheumatology Research Alliance (CARRA) registry: design, rationale, and characteristics of patients enrolled in the first 12 months. *Pediatr Rheumatol Online J* 2017;15(1):30. doi: 10.1186/s12969-017-0160-6 [published Online First: 2017/04/17]
4. Harris PA, Taylor R, Thielke R, et al. Research electronic data capture (REDCap)--a metadata-driven methodology and workflow process for providing translational research informatics support. *J Biomed Inform* 2009;42(2):377-81. doi: 10.1016/j.jbi.2008.08.010 [published Online First: 2008/09/30]
5. Caro-Domínguez P, Compton G, Humpl T, et al. Pulmonary arterial hypertension in children: diagnosis using ratio of main pulmonary artery to ascending aorta diameter as determined by multi-detector computed tomography. *Pediatr Radiol* 2016;46(10):1378-83. doi: 10.1007/s00247-016-3636-5 [published Online First: 2016/05/19]
6. Li H, Durbin R. Fast and accurate long-read alignment with Burrows-Wheeler transform. *Bioinformatics* 2010;26(5):589-95. doi: 10.1093/bioinformatics/btp698 [published Online First: 2010/01/15]
7. DePristo MA, Banks E, Poplin R, et al. A framework for variation discovery and genotyping using next-generation DNA sequencing data. *Nat Genet* 2011;43(5):491-8. doi: 10.1038/ng.806 [published Online First: 2011/04/10]
8. Wang K, Li M, Hakonarson H. ANNOVAR: functional annotation of genetic variants from high-throughput sequencing data. *Nucleic Acids Res* 2010;38(16):e164. doi: 10.1093/nar/gkq603 [published Online First: 2010/07/03]
9. Yates A, Akanni W, Amode MR, et al. Ensembl 2016. *Nucleic Acids Res* 2016;44(D1):D710-6. doi: 10.1093/nar/gkv1157 [published Online First: 2015/12/19]
10. Lek M, Karczewski KJ, Minikel EV, et al. Analysis of protein-coding genetic variation in 60,706 humans. *Nature* 2016;536(7616):285-91. doi: 10.1038/nature19057

11. Auton A, Brooks LD, Durbin RM, et al. A global reference for human genetic variation. *Nature* 2015;526(7571):68-74. doi: 10.1038/nature15393
12. Ng PC, Henikoff S. SIFT: Predicting amino acid changes that affect protein function. *Nucleic Acids Res* 2003;31(13):3812-4.
13. Adzhubei IA, Schmidt S, Peshkin L, et al. A method and server for predicting damaging missense mutations. *Nat Methods* 2010;7(4):248-9. doi: 10.1038/nmeth0410-248
14. Jagadeesh KA, Wenger AM, Berger MJ, et al. M-CAP eliminates a majority of variants of uncertain significance in clinical exomes at high sensitivity. *Nat Genet* 2016;48(12):1581-86. doi: 10.1038/ng.3703 [published Online First: 2016/10/24]
15. den Dunnen JT, Dalgleish R, Maglott DR, et al. HGVS Recommendations for the Description of Sequence Variants: 2016 Update. *Hum Mutat* 2016;37(6):564-9. doi: 10.1002/humu.22981 [published Online First: 2016/03/25]
16. Wenger AM, Gudur H, Bernstein JA, et al. Systematic reanalysis of clinical exome data yields additional diagnoses: implications for providers. *Genet Med* 2017;19(2):209-14. doi: 10.1038/gim.2016.88 [published Online First: 2016/07/21]
17. Stenson PD, Mort M, Ball EV, et al. The Human Gene Mutation Database: towards a comprehensive repository of inherited mutation data for medical research, genetic diagnosis and next-generation sequencing studies. *Hum Genet* 2017;136(6):665-77. doi: 10.1007/s00439-017-1779-6 [published Online First: 2017/03/27]
18. Ho D, Imai K, King G, et al. MatchIt: Nonparametric Preprocessing for Parametric Causal Inference. *Journal of Statistical Software; Vol 1, Issue 8 (2011)* 2011
19. Ravelli A, Minoia F, Davi S, et al. 2016 Classification Criteria for Macrophage Activation Syndrome Complicating Systemic Juvenile Idiopathic Arthritis A European League Against Rheumatism/American College of Rheumatology/Paediatric Rheumatology International Trials Organisation Collaborative Initiative. *ResearchGate* 2016;75(3):481-89. doi: 10.1136/annrheumdis-2015-208982
20. Janow G, Schanberg LE, Setoguchi S, et al. The Systemic Juvenile Idiopathic Arthritis Cohort of the Childhood Arthritis and Rheumatology Research Alliance Registry: 2010-2013. *J Rheumatol* 2016;43(9):1755-62. doi: 10.3899/jrheum.150997 [published Online First: 2016/06/17]
21. Wallace CA, Giannini EH, Huang B, et al. American College of Rheumatology provisional criteria for defining clinical inactive disease in select categories of juvenile idiopathic arthritis. *Arthritis Care Res (Hoboken)* 2011;63(7):929-36. doi: 10.1002/acr.20497 [published Online First: 2011/07/01]

22. Russo RA, Katsicas MM. Patients with very early-onset systemic juvenile idiopathic arthritis exhibit more inflammatory features and a worse outcome. *J Rheumatol* 2013;40(3):329-34. doi: 10.3899/jrheum.120386 [published Online First: 2013/01/15]
23. Pardeo M, Pires Marafon D, Insalaco A, et al. Anakinra in Systemic Juvenile Idiopathic Arthritis: A Single-center Experience. *J Rheumatol* 2015;42(8):1523-7. doi: 10.3899/jrheum.141567 [published Online First: 2015/06/01]
24. Nigrovic PA, Mannion M, Prince FH, et al. Anakinra as first-line disease-modifying therapy in systemic juvenile idiopathic arthritis: report of forty-six patients from an international multicenter series. *Arthritis Rheum* 2011;63(2):545-55. doi: 10.1002/art.30128
25. The Genotype-Tissue Expression (GTEx) pilot analysis: Multitissue gene regulation in humans. *Science* 2015;348(6235):648.
26. Robinson MD, Oshlack A. A scaling normalization method for differential expression analysis of RNA-seq data. *Genome Biol* 2010;11(3):R25. doi: 10.1186/gb-2010-11-3-r25 [published Online First: 2010/03/04]
27. Robinson MD, McCarthy DJ, Smyth GK. edgeR: a Bioconductor package for differential expression analysis of digital gene expression data. *Bioinformatics (Oxford, England)* 2010;26(1):139-40. doi: 10.1093/bioinformatics/btp616 [published Online First: 11/11]

Table S1: Definitions

A. Definitions provided to case reporters	
TERM	DEFINITION
Race	One or more of White, Black, Hispanic, Native American, Native Hawaiian, Pacific Islander or other, as noted in the medical record
fHLH	Familial hemophagocytic lymphohistiocytosis, confirmed by genetic analysis
Overt MAS ¹	Ferritin >684 ng/ml and any two of:
	Platelet count < 182 x 10 ⁹ /liter
	Aspartate aminotransferase (AST/SGOT) > 48 U/L
	Triglycerides > 156 mg/dl,
	Fibrinogen < 361 mg/dl
	AND
	Clinical systemic features including any of: fever, hepatosplenomegaly, lymphadenopathy, CNS changes, acutely ill appearing, mucosal bleeding, petechial/ecchymotic rash
Diagnosis of lung disease	Day lung disease work-up began, even if in retrospect, the patient had prior symptoms
Improved lung disease	Clinical and/or radiographic improvement
Resolved lung disease	Asymptomatic and normal chest CT (minimal scarring allowed)
B. Definitions used for data analysis	
TERM	DEFINITION
Modified ILAR classification criteria for sJIA	Inclusion: Onset age 6 months-18 years, fever for ≥2 weeks (allowing absence of documented quotidian nature), arthritis observed by a physician, and at least one of the following: evanescent rash, generalized lymphadenopathy, hepato- and/or splenomegaly, or serositis. Exclusion criteria: cardinal features of other forms of JIA per ILAR classification ²
sJIA-like disease	Illness managed as sJIA, but failing to meet sJIA criteria
MAS	Per case reporter using definition of MAS provided
Lung disease	Parenchymal and/or vascular lung +/- pleural involvement
Lung disease at sJIA onset	Lung disease noted <30 days after sJIA onset
Prior to lung disease	Time period between visits at 6 months and 1 month before diagnosis of lung disease
IL-1/IL-6 inhibitor class	Anti-IL-1: anakinra, canakinumab, rilonacept; Anti-IL-6: tocilizumab
Pre-exposure to inhibitor of IL-1/IL-6	Inhibitor begun ≥3 weeks before diagnosis of lung disease
Persistent arthritis	Arthritis for ≥6 months, present at 6 and 12 months before diagnosis of lung disease. If lung disease diagnosed <12 months after sJIA/sJIA-like onset, persistent arthritis= arthritis present at onset and at 6 month visit before diagnosis of lung disease.
Very elevated ferritin	Ferritin values 1000 ng/ml within +/- 7 days of the date of lung disease diagnosis. ³
Systemic quiescence on therapy	Ferritin normal for age ³ , no MAS, no pulse steroids, oral steroids from zero to <0.15m/kg/d, ≥6 weeks, arthritis allowed
Digital erythema	Erythema of fingertips and/or toes preceding or associated with clubbing
Atypical rash	Non-evanescent rash, often intensely pruritic and eczematous +/- vesicles, facial edema, or purpuric areas
Unexplained abdominal pain	Abdominal pain without defined etiology, after investigations such as endoscopy, biopsy, abdominal CT
Significant lymphopenia	Absolute lymphocyte count (ALC) <60% of age adjusted lower limit of normal ⁴
Eosinophilia	As per case reporter, excluding cases of atopic dermatitis with elevated serum IgE
Abnormal auscultation, cough, tachypnea, hypoxia	Per case reporter
Predominantly neutrophilic BAL	≥ 40% neutrophils in BAL. (>10x upper limit of normal for BAL. ⁵)
Predominantly lymphocytic BAL	≥ 40% lymphocytes in BAL. (>2.5x upper limit of normal for BAL. ⁵)
Enlarged pulmonary artery	Size ratio of main pulmonary artery to ascending aorta >1.25 on CT. ⁶
Cytokine inhibitor medication gap	All cytokine inhibitors stopped for ≥6 weeks
Pulmonary hypertension	Based on echocardiogram and/or cardiac catheterization. Enlarged pulmonary artery on chest CT was not sufficient.
DReSS	Drug reaction with systemic systems and typically, eosinophilia. ⁷
RegiSCAR score for DReSS	Scoring system to classify cases as definite, probable, possible or no DRESS based on domains of fever, rash, eosinophilia (≥absolute eosinophil = 699 or ≥ 9%, if WBC <4.0, regardless of steroid), atypical lymphocytes, organ and lymph node involvement and absence of other specific explanations ⁸

REF: ¹Ravelli *et al*; ²DeWitt *et al*; ³Soldin *et al*; ⁴Van Gent *et al*; ⁵Meyer *et al*; ⁶Caro-Dominguez *et al*; ⁷Martinez-Cabriaes *et al*; ⁸Kardaun *et al*

Table S2: Summary statistics of clinical features prior to lung disease¹

	Summary	sJIA-like	sJIA (ILAR+) ²	OR (95% CI)
Demographic characteristics				
% Female	66% (40/61)	81% (13/16)	60% (27/45)	0.35(0.056-1.5)
Age (median, IQR range) at the sJIA onset	2.8(1.2-6.4)	2.3 (0.9-7.8)	3.1 (1.5-6.2)	-
White	62% (38/61)	50% (8/16)	67% (30/45)	2(0.53-7.4)
Black	8.2% (5/61)	6.2% (1/16)	8.9% (4/45)	1.5(0.13-77)
Other race	30% (18/61)	44% (7/16)	24% (11/45)	0.42(0.11-1.7)
Trisomy 21	9.8% (6/61)	12% (2/16)	8.9% (4/45)	0.69(0.087-8.4)
Familial hemophagocytic lymphohistiocytosis (fHLH) ³	7.1% (2/28)	22% (2/9)	0% (0/19)	0(0-2.4)#
Pre-lung disease course				
History of >1 episode of pneumonia prior to onset of sJIA/sJIA-like illness	11% (7/61)	19% (3/16)	8.9% (4/45)	0.43(0.063-3.3)
ILAR+ sJIA ²	74% (45/61)	0% (0/16)	100% (45/45)	Inf(90-Inf)***
MAS at onset of sJIA/sJIA-like illness ⁵	29% (16/55)	38% (5/13)	26% (11/42)	0.57(0.13-2.7)
MAS ≥ 1 episode ^{5,6}	35% (19/55)	38% (5/13)	33% (14/42)	0.8(0.19-3.7)
Recurrent MAS ^{5,7}	12% (6/49)	10% (1/10)	13% (5/39)	1.3(0.12-69)
Persistent arthritis ⁸	18% (7/38)	17% (1/6)	19% (6/32)	1.1(0.097-64)
No steroids or weaned off prior to lung disease ^{5,9}	44% (24/55)	31% (4/13)	48% (20/42)	2(0.47-10)
Systemic quiescence on therapy before diagnosis of lung disease ¹⁰	38% (19/50)	30% (3/10)	40% (16/40)	1.5(0.29-11)
Time from sJIA onset to diagnosis of lung disease ⁵ [med yrs(IQR)]	1.6 (0.8-3.3)	0.5(0.5-1.7)	2(1.1-4.3)	-
Drug exposures				
Never exposed to anti-IL1/anti-IL6 class	8.2% (5/61)	25% (4/16)	2.2% (1/45)	0.072(0.0014-0.81)*
1st anti-IL1/anti-IL6 class at or after diagnosis of lung disease	16% (10/61)	25% (4/16)	13% (6/45)	0.47(0.092-2.6)
<i>Exposures before diagnosis of lung disease</i>				
Anti-IL-1/anti-IL-6 class ¹¹	75% (46/61)	50% (8/16)	84% (38/45)	5.2(1.3-23)*
>1 of anti-IL-1/anti-IL-6 class	38% (23/61)	12% (2/16)	47% (21/45)	6(1.2-60)*
Only anakinra ¹²	31% (19/61)	38% (6/16)	29% (13/45)	0.68(0.18-2.8)
Only canakinumab ¹²	3.3% (2/61)	0% (0/16)	4.4% (2/45)	Inf(0.066-Inf)
Only rilonacept ¹²	1.6% (1/61)	0% (0/16)	2.2% (1/45)	Inf(0.0091-Inf)
Only tocilizumab ¹²	1.6% (1/61)	0% (0/16)	2.2% (1/45)	Inf(0.0091-Inf)
Methotrexate	46% (28/61)	25% (4/16)	53% (24/45)	3.4(0.85-17)#
Anti-TNF	6.6% (4/61)	12% (2/16)	4.4% (2/45)	0.33(0.022-5)
Cyclosporine or tacrolimus	23% (14/61)	12% (2/16)	27% (12/45)	2.5(0.46-26)
Time from 1st exposure to anti-IL-1/anti-IL-6 to lung disease [med yrs(IQR)]	1.2(0.7-2.1)	0.6(0.5-1.5)	1.3(0.8-2.4)	-

#, P < 0.1; *, P < 0.05; **, P < 0.01; *** P < 0.001. For odds ratios (OR), 95 percent confidence intervals (95% CI) shown. med, median; yrs, years; na, not applicable.

¹ Diagnosis of lung disease is defined as when lung disease evaluation began, even if in retrospect, there may have been prior symptoms.

² Cases satisfying International League of Associations for Rheumatology (ILAR) classification as sJIA (De Benedetti and Schneider in Petty et al⁹), with expert consensus modifications (DeWitt et al²; see Methods, Supp. Appendix)

³ Diagnosed by clinical testing; one with 2 UNC13D mutations; one with UNC13D/PRF1 mutations; both sJIA-like.

⁴ Other lung disease prior to sJIA (number of cases): asthma (3), lung disease of prematurity (1), ventilator dependent lung disease of unknown etiology (1)

⁵ Excludes 6 cases with lung disease at sJIA onset.

⁶ At least one episode of MAS occurred up to 6 months prior to diagnosis of lung disease

⁷ More than 1 episode of MAS occurred up to 6 months prior to diagnosis of lung disease, excludes those with an insufficient time window between sJIA onset and lung disease.

⁸ Arthritis persisted for at least 6 months before diagnosis of lung disease.

⁹ At least one treatment period of ≥6 weeks in which steroids were not used.

¹⁰ Quiescence defined as at least one period of ≥6 weeks with ferritin normal for age (Soldin et al³), no MAS, no pulse steroids and oral steroids from zero to <0.15m/k/d. Arthritis was allowed.

¹¹ Anti-IL1/anti-IL-6 class: anti-IL-1: anakinra, canakinumab, rilonacept; anti-IL-6: tocilizumab

¹² Of the cytokine inhibitors, exposed to only the indicated member of this class prior to lung disease, but can include exposure to medications of other classes.

Table S3: Summary statistics of clinical features associated with lung disease

	Summary	sJIA-like	sJIA (ILAR+) ¹	OR (95% CI)
Atypical clinical findings associated with lung disease²				
Non-evanescent atypical rash	56% (34/61)	75% (12/16)	49% (22/45)	0.32(0.066-1.3)#
Abdominal pain (unexplained) ³	16% (10/61)	0% (0/16)	22% (10/45)	Inf(0.88-Inf)#
Acute clubbing	61% (37/61)	50% (8/16)	64% (29/45)	1.8(0.48-6.7)
Digital erythema	34% (21/61)	38% (6/16)	33% (15/45)	0.84(0.22-3.4)
Significant lymphopenia ⁴ prior to diagnosis of lung disease	42% (23/55)	33% (3/9)	53% (20/38)	2.22(0.48-10.2)
Tocilizumab reaction (SAE grade 3) ^{5,6}	38% (14/37)	17% (1/6)	42% (13/31)	3.5(0.33-180)
Eosinophilia ⁷	37% (22/59)	27% (4/15)	41% (18/44)	1.9(0.46-9.4)
Clinical features at diagnosis of lung disease				
Concurrent onset of sJIA/sJIA-like disease	9.8% (6/61)	19% (3/16)	6.7% (3/45)	0.32(0.038-2.7)
Very elevated ferritin ⁸	55% (24/44)	60% (6/10)	53% (18/34)	0.75(0.13-3.9)
Significant lymphopenia ⁴ at lung disease	39% (24/61)	69% (9/13)	41% (15/37)	0.3(0.08-1.2)
MAS ⁹	38% (23/61)	50% (8/16)	33% (15/45)	0.51(0.13-1.9)
Abnormal chest auscultation	30% (18/61)	50% (8/16)	22% (10/45)	0.29(0.073-1.1)#
Cough	43% (26/61)	12% (2/16)	53% (24/45)	7.8(1.5-78)**
Tachypnea	38% (23/61)	31% (5/16)	40% (18/45)	1.5(0.38-6.3)
Hypoxia ¹⁰	43% (26/61)	62% (10/16)	36% (16/45)	0.34(0.084-1.2)#
Pulmonary hypertension ¹¹	30% (18/61)	13%(2/16)	36%(16/45)	3.86(0.78-19.2)
Viral or fungal infection ¹²	34% (21/61)	44% (7/16)	31% (14/45)	0.59(0.16-2.3)
Predominantly neutrophilic bronchoalveolar lavage ¹³	47% (17/36)	50% (6/12)	46% (11/24)	0.85(0.17-4.2)
Predominantly lymphocytic bronchoalveolar lavage ¹⁴	5.9% (2/34)	17% (2/12)	0% (0/22)	0(0-2.8)
Features during lung disease¹⁵				
MAS	53% (32/61)	63% (10/16)	49% (22/45)	0.57(0.18-1.9)
All cytokine inhibitors discontinued ¹⁶	9% (5/56)	15% (2/13)	7% (3/44)	0.4(0.06-2.7)

#, P < 0.1; *, P < 0.05; **, P < 0.01; *** P < 0.001. For odds ratios (OR), 95 percent confidence intervals (95% CI) shown. med, median; yrs, years; na, not applicable.

¹Cases satisfying International League of Associations for Rheumatology (ILAR) classification as sJIA (De Benedetti and Schneider in Petty et al⁹), with expert consensus modifications (DeWitt et al²; see Methods, Supp. Appendix)

²Findings occurred between the 6 month and 1 month visit prior to diagnosis of lung disease, except as noted.

³Abdominal pain without defined etiology, after investigations such as endoscopy, biopsy and/or abdominal CT.

⁴Absolute lymphocyte count (ALC) <60% of age adjusted lower limit of normal (Van Gent et al⁴) Includes cases with at least one value provided.

⁵SAE grade 3: Severe or medically significant but not immediately life-threatening (Common Terminology Criteria for Adverse Events).

⁶Tocilizumab exposure occurred before diagnosis of lung disease (20 cases) and after (17 cases). Reactions in 10/20 exposed before and 4/17 exposed after diagnosis of lung disease.

⁷Per case reporter, within 1 year prior to diagnosis of lung disease or after lung disease (4 cases). Excludes 2 cases of atopic dermatitis with elevated serum IgE.

⁸Ferritin values reached 1000 ng/ml within +/- 7 days of the date of lung disease diagnosis.

⁹Overt MAS between the 6 month visit before, until and including the initial evaluation for lung disease; denominator includes 6 cases with lung disease at sJIA onset.

¹⁰Per case reporter

¹¹Based on echocardiogram and/or cardiac catheterization. Enlarged pulmonary artery on chest CT was not sufficient. Includes 2 with veno-occlusive disease and 1 with severe pulmonary vascular disease.

¹²Scored if ≥ 1 pathogen identified. Organisms reported in >1 case: Pneumocystis (4), herpes (10), rhinovirus (5), RSV(5) by PCR+ (BAL,serum,naso-pharyngeal); Histoplasmosis (2) by multiple methods.

¹³Scored if ≥40% neutrophils; however, all but one BAL was neutrophilic by the less stringent ATS criteria (>3 % neutrophils; Meyer et al⁵)

¹⁴Scored if ≥40% lymphocytes. 11 cases had lymphocytic BAL by the less stringent ATS criteria (>15% lymphocytes; Meyer et al⁵)

¹⁵From diagnosis of lung disease to data close

¹⁶In 10/15 cases without pre-exposure, treatment with cytokine inhibitors was initiated after lung disease diagnosis. Data include all cases ever treated with these medications.

Table S4: Summary statistics of chest CT and histopathology findings

	Summary	sJIA-like	sJIA (ILAR+) ¹	OR (95% CI)
Chest CT findings				
Pattern A: Primarily peripheral septal thickening	60% (35/58)	31% (5/16)	71% (30/42)	5.3(1.4-24)**
Pattern B: Crazy-paving	21% (12/58)	38% (6/16)	14% (6/42)	0.29(0.06-1.3)#
Pattern C: Peripheral consolidations	22% (13/58)	19% (3/16)	24% (10/42)	1.3(0.28-8.8)
Pattern D: Peribronchovascular consolidations	16% (9/58)	6.2% (1/16)	19% (8/42)	3.5(0.4-170)
Pattern E: Predominantly ground-glass opacities	12% (7/58)	19% (3/16)	9.5% (4/42)	0.46(0.068-3.6)
Other ²	17% (10/58)	25% (4/16)	14% (6/42)	0.51(0.099-2.9)
Hyper-enhancing lymph nodes	37% (11/30)	33% (3/9)	38% (8/21)	1.2(0.19-9.7)
Pulmonary artery enlargement ³	27% (13/49)	0% (0/11)	34% (13/38)	Inf(1.1-Inf)*
Lymphadenopathy (mediastinal/hilar +/- axillary/cervical)	69% (40/58)	56% (9/16)	74% (31/42)	2.2(0.54-8.5)
Pericardial effusion	22% (13/58)	19% (3/16)	24% (10/42)	1.3(0.28-8.8)
Pleural effusion	6.9% (4/58)	6.2% (1/16)	7.1% (3/42)	1.2(0.085-65)
Histopathologic findings⁴				
PAP/ELP ⁵	64% (23/36)	67% (8/12)	62% (15/24)	0.84(0.14-4.3)
Arterial and/or venous vasculopathy	44% (16/36)	42% (5/12)	46% (11/24)	1.2(0.24-6.2)
Pleuritis	17% (6/36)	17% (2/12)	17% (4/24)	1(0.12-13)
Interstitial fibrosis (1-2+)	43% (15/35)	42% (5/12)	43% (10/23)	1.1(0.21-5.7)
Advanced interstitial fibrosis (3+)/remodeling	11% (4/35)	8.3% (1/12)	13% (3/23)	1.6(0.11-94)
Neutrophilic inflammation ⁶	25% (9/36)	33% (4/12)	21% (5/24)	0.54(0.087-3.5)
Lymphoplasmacytic inflammation ⁷	61% (22/36)	50% (6/12)	67% (16/24)	2(0.39-10)

#, P < 0.1; *, P < 0.05; **, P < 0.01; *** P < 0.001. For odds ratios (OR), 95 percent confidence intervals (95% CI) shown

¹Cases satisfying International League of Associations for Rheumatology (ILAR) classification as sJIA (De Benedetti and Schneider in Petty et al⁹, with expert consensus modifications (DeWitt et al²; see Methods, Supp. Appendix)

²Other CT findings include: pulmonary nodules involving multiple lobes, wide-spread ground glass combined with other findings, e.g., consolidation or atelectasis and nodules.

³Size ratio of main pulmonary artery to ascending aorta >1.25 on CT (Caro-Dominguez et al⁶)

⁴Other histopathologic findings include: Pre-exposed cases: bronchiolitis obliterans organizing pneumonia (1), minimal acute inflammation (1), cellular interstitial pneumonia (1); Not pre-exposed cases: fibrotic nonspecific interstitial pneumonitis (1), patchy fibroinflammatory process with subpleural cysts (1), necrotizing granulomas with fungal forms (1), chronic inflammation (1), pulmonary edema (1)

⁵This does not include one additional case with BAL only, showing lipid-laden macrophages

⁶Typically represents acute inflammation.

⁷Typically represents chronic inflammation.

Table S5A: Rare variants in disease-related surfactant dysfunction or hereditary PAP genes detected by whole exome sequencing*

Case	Gene	Chrom ¹	Position ²	Ref ³	Alt ⁴	RefSeq Transcript ⁵	Effect on protein ⁶	ExAC frequency ⁷	MCAP score ⁸	SIFT score ⁹	PolyPhen2 score ¹⁰		HGMD status ¹²	Zygosity	De novo
E	ABCA3	16	2345709	G	A	NM_001089.2	p.P766S	0.003244	0.028761	0.25	0.115	Possibly Pathogenic		heterozygous	no
H	CSF2RB	22	37319355	A	G	NM_000395.2	p.D49G	0	0.033802	0.1	0.5	Possibly Pathogenic		heterozygous	no
I	ABCA3	16	2369592	C	T	NM_001089.2	p.R288K	0.009463	0.043974	1	0.002	Possibly Pathogenic	Disease-causing for "fatal surfactant deficiency" (when homozygous)	heterozygous	no
M	SFTPB	2	85893771	G	GTT	NM_000542.3	p.P133fs	0.000606	-	-	-	No functional protein from this variant	Different fs at same position: disease-causing for "pulmonary alveolar proteinosis" (when homozygous)	heterozygous	no
	CSF2RB	22	37326794	G	A	NM_000395.2	p.D312N	0.020465	-	0.38	0.077	Likely Benign		heterozygous	no
N	SFTPC	8	22021460	G	A	NM_003018.3	p.R167Q	0.019231	-	0.35	0.09	Likely Benign	Disease-causing for "interstitial lung disease"; (low penetrance). ¹⁴	heterozygous	no
O	MARS	12	57881919	C	G	NM_004990.3	p.L16V	0.0027	0.142845	0.177	0.952	Possibly Pathogenic		heterozygous	no trio data
P	MARS	12	57883053	T	del	NM_004990.3	p.L71fs	0.0057	-	-	-	No functional protein from this variant	Disease-causing for "pulmonary alveolar proteinosis" (when mutations are homozygous) ¹⁵	heterozygous	no

* Data from 20 subjects were analyzed

fs, frameshift

(-), Absence of MCAP score reflects variants that are either common or not nonsynonymous.

Column Definitions

¹Chrom hg19/GRCh37 chromosome

²Position hg19/GRCh37 genomic loci

³Ref allele in the reference genome at this position

⁴Alt the variation observed at this position

⁵RefSeq the RefSeq transcript relative to which the protein effect is de:

⁶Effect on the amino acid substitution resulting from this variant

⁷ExAC maximum observed frequency across all ExAC subpopulations, as described in Lek et al¹⁰

⁸MCAP score pathogenicity score developed as described in Jagadeesh et al

⁹SIFT score pathogenicity score developed as described in Ng et al¹²

¹⁰PolyPhen2 pathogenicity score developed as described in Adzhubei et al¹³

¹¹Likelihood of being Possibly pathogenic or likely benign label assigned based on the in silico pathogenic scores if present or PhyloP evolutionary conservation-based metrics, as described in Kent et al¹⁴ and Siepel A et al¹⁵ otherwise.

¹²HGMD status presence of a mutation in Human Gene Mutation Database PRO, version 2018.1, as described in Stenson et al¹⁶ HGMD annotation does not distinguish recessive/dominant. Information added based on the literature.

For fHLH genes, these heterozygous variants do not lead to primary HLH. However, it is possible that they increase susceptibility to MAS.¹⁷

¹⁴As described in Tredano et al¹⁸

¹⁵As described in Hadchouel et al¹⁹

Table S5B: Rare variants in HLH/MAS-related genes detected by whole exome sequencing*

Case	Gene	Chrom ¹	Position ²	Ref ³	Alt ⁴	RefSeq Transcript ⁵	Effect on protein ⁶	ExAC frequency ⁷	MCAP score ⁸	SIFT score ⁹	PolyPhen2 score ¹⁰	Likelihood of being pathogenic ¹¹	HGMD status ¹²	Zygosity	De novo
A	LYST	1	2.36E+08	T	G	NM_000081.3	p.I970L	0.012839	-	0.47	0.007	Likely Benign		heterozygous	no
B	LYST	1	2.36E+08	C	T	NM_000081.3	p.R3412H	0.001163	0.149681	0.01	0.965	Possibly Pathogenic		heterozygous	no
C	UNC13D	17	73826491	G	A	NM_199242.2	p.R928C	0.046901	-	0.1	0.183	Likely Benign	Possibly disease-causing for "hemophagocytic lymphohistiocytosis (HLH), familial"	heterozygous	no
	LYST	1	2.36E+08	T	G	NM_000081.3	p.N2565T	0	0.042271	0.04	0.031	Possibly Pathogenic		heterozygous	no
	STXBP2	19	7712331	A	C	NM_006949.3	p.M544L	0	0.029647	0.3	0.002	Possibly Pathogenic		heterozygous	no
D	LYST	1	2.36E+08	G	A	NM_000081.3	p.T1982I	0.0107	-	0.36	0.004	Likely Benign	Disease-associated polymorphism in "HLH-associated with H1N1 influenza" ¹³	heterozygous	no
E	STXBP2	19	7708058	C	T	NM_006949.3	p.T345M	0.016591	-	0.02	0.992	Likely Benign	Possibly disease-causing for "HLH type 5"	heterozygous	no
F	UNC13D	17	73839326	C	T	NM_199242.2	p.A59T	0.028409	-	0.29	0.002	Likely Benign	Possibly disease-causing for "HLH, familial"	heterozygous	no
G	STX11	6	1.45E+08	G	T	NM_003764.3	p.A95S	0	0.003167	0.39	0.026	Likely Benign		heterozygous	no
H	UNC13D	17	73838968	C	G	NM_199242.2	p.A120P	0	0.3077	0	1	Possibly Pathogenic		heterozygous	no
I	LYST	1	2.36E+08	C	T	NM_000081.3	p.R3412H	0.001163	0.149681	0.01	0.965	Possibly Pathogenic		heterozygous	no
J	LYST	1	2.36E+08	AAG	del	NM_000081.3	p.S671del	0.0002	-	-	-	Possibly Pathogenic		heterozygous	no
K	NLRC4	2	32463365	C	A	NM_001199138	p.G786V	0.0036	0.049076	0.35	0.831	Possibly Pathogenic		heterozygous	no
L	NLRC4	2	32475757	GTG	del	NM_001199138	p.H392del	-	-	-	-	Likely affects function		heterozygous	no

* Data from 20 subjects were analyzed

fs, frameshift

(-), Absence of MCAP score reflects variants that are either common or not nonsynonymous.

Column Definitions

¹Chrom hg19/GRCh37 chromosome

²Position hg19/GRCh37 genomic loci

³Ref allele in the reference genome at this position

⁴Alt the variation observed at this position

⁵RefSeq the RefSeq transcript relative to which the protein effect is

⁶Effect on the amino acid substitution resulting from this variant

⁷ExAC maximum observed frequency across all ExAC subpopulations, as described in Lek et al¹⁰

⁸MCAP score pathogenicity score developed as described in Jagadeesh et

⁹SIFT score pathogenicity score developed as described in Ng et al¹²

¹⁰PolyPhen2 pathogenicity score developed as described in Adzhubei et al¹³

¹¹Likelihood of being Possibly pathogenic or likely benign label assigned based on the in silico pathogenic scores if present or PhyloP evolutionary conservation-based metrics, as described in Kent et al¹⁴ and Siepel A et al¹⁵ otherwise.

¹²HGMD status presence of a mutation in Human Gene Mutation Database PRO, version 2018.1, as described in Stenson et al¹⁶ HGMD annotation does not distinguish recessive/dominant. Information added based on the literature.

For fHLH genes, these heterozygous variants do not lead to primary HLH. However, it is possible that they increase susceptibility to MAS.¹⁷

¹³As described in Schulert et al²⁰

Table S6: Comparative severity in pre-exposed lung disease (LD)¹ cases versus published sJIA cohorts

	Figure 4C				Figure 4D		
	sJIA: all onset ages				sJIA: onset at ≤1.5 years ⁴		
Population	LD	Janow ²	OR (95%CI) p	LD	Russo ³	OR (95%CI) p	
Multi vs single center	multi	multi		multi	single		
Number	46	372		15	19		
sJIA onset age [median yrs(IQR)]	2.4 (1.1,5.1)	4.6 (2.3,9.4)	na	1 (0.7,1.1)	1 (0.9,1.3)	na	
sJIA duration (median yrs)	1.6	3.7	na	1.2	≥ 3	na	
Severity feature							
MAS @ onset	26% (12/46)	na	na	27% (4/15)	32% (6/19)	0.79(0.21-3.3) p >0.9999	
Cyclosporine or Tacrolimus ⁵	13% (6/46)	na	na	7% (1/15)	na	na	
Ever off steroids ⁶	55% (23/42)	na	na	36% (5/14)	na	na	
Treatment response	43% ⁷ (18/42)	56% ⁸ (142/255)	0.6(0.31-1.17) p=0.1350	25% ⁷ (3/12)	21% ⁸ (4/19)	1.25(0.26-5.73) p >0.9999	
Persistent arthritis	15% (7/46)	39% (100/255)	0.28(0.12-0.63) p=0.0014	13% (2/15)	53% (10/19)	0.14(0.03-0.85) p=0.0297	
	Figure 4E				Figure 4F		
	sJIA: onset at >1.5 years ²				Cytokine inhibitor ≥ 6 months		
Population	LD	Russo ³	OR (95%CI) p	LD	Pardeo ⁹	Nigrovic ¹⁰	X ² , df, p
Multi vs single center	multi	single		multi	single	multi	
Number	31	113		38	25	46	
sJIA onset age [med yrs(IQR)]	3.4 (2,6)	5 (3,8)	na	3.0(1.3,5.8)	5.8 (2.9,9.3)	7.6(range 0.75-15.7)	na
sJIA duration (med yrs)	1.6	≥ 3	na	1.7	≥ 1	1.4	na
Severity feature							
MAS @ onset	26% (8/31) ^{11,12}	3% (3/113)	12.75(3.38-45.94) p=0.0002	26%(10/38)	28% (7/25)	13% (6/46)	3.129, 2, p=0.2092
Cyclosporine or Tacrolimus ³	16% (5/31)	na	na	16%(6/38)	12% (3/25)	7% (3/46)	1.857, 2, p=0.3952
Ever off steroids ⁴	64% (18/28)	na	na	53%(20/38)	84% (21/25)	74%(34/46)	7.88, 2, p=0.0194
Treatment response	48% ⁷ (15/31)	40% ⁸ (45/113)	1.42(0.66-3.02) p=0.4167	34% ⁷ (11/32)	56% ^{8,14} (14/25)	59% ¹³ (27/46)	4.867, 2, p=0.0877
Persistent arthritis	16% (5/31)	24% (27/113)	0.61(0.34-1.76) p=0.4673	18%(7/38)	na	11%(5/46)	na

For odds ratios (OR), 95 percent confidence intervals (95% CI) shown with p value (p=); med, median; yrs, years; na, not applicable; X², chi square; df, degrees

¹ Lung disease (LD) cases pre-exposed to anti-IL-1 or anti-IL-6

² Janow et al²¹

³ Russo et al²²

⁴ Age selected by Russo et al based on developmental processes that occur prior to 18 months

⁵ ≥ 6 months before LD diagnosis for LD cases

⁶ Requires no steroids for ≥ 6 weeks. Assessed in those with ≥ 6 months between sJIA onset and LD diagnosis. For Pardeo, cases stopping steroids are presumed to be off for ≥ 6 we

⁷ Treatment response: systemic quiescence with >6 months from sJIA onset to LD, prednisone 0 to <0.15mg /kg/d and normal ferritin.

⁸ Treatment response: inactive disease by Wallace criteria.²³

⁹ Pardeo et al²⁴

¹⁰ Nigrovic et al²⁵

¹¹ Behrens et al²⁶ reports 9% (12/136) with MAS at sJIA onset. LD cases (onset >1.5y) vs Behrens (full cohort; median onset=5y): 4.83 (95% CI 1.69, 13.82), p=0.003

¹² For 8 LD cases with MAS @ sJIA onset, age at sJIA onset = 7.4y (2.7,15.1)

¹³ Treatment response: complete remission based per clinician report of minima residual symptoms, no supplementary medications in addition to Anakinra and normal laboratory study findings.

¹⁴ Response to anakinra at 6 mo visit

Table S7: Summary statistics of disease outcomes at data close

	Summary		sJIA-like	sJIA (ILAR+) ¹	OR (95% CI)
Lung disease resolved²	4.9% (3/61)		0% (0/16)	6.7% (3/45)	Inf(0.14-Inf)
Deceased	36% (22/61)		38% (6/16)	36% (16/45)	0.9(0.28-3)
<i>Causes of death³</i>					
MAS	36% (8/22)		17% (1/6)	44% (7/16)	3.89(0.37-41.3)
Diffuse lung disease	55% (12/22)		83% (5/6)	44% (7/16)	0.16(0.01-1.65)
Pulmonary hypertension ⁴	32% (7/22)		33% (2/6)	38% (6/16)	1.2(0.17-8.7)
Time from LD to death (yrs)	1(0.4-2.9)		1(0.8-2.2)	1.2(0.1-3.3)	-
Alive at data close	64% (39/61)		63%(10/16)	64%(29/45)	1.1(0.33-3.6)
<i>Lung disease status</i>					
Pulmonary hypertension ⁴	13% (5/39)		0% (0/10)	17% (5/29)	Inf(0.32-Inf)
Oxygen requirement ⁵	21% (8/39)		10% (1/10)	24% (7/29)	2.9(0.31-26.7)
Time from LD to data close [median yrs(IQR)]	2.2(1.1-3.4)		1.8(1.4-2.7)	2.3(0.6-3.8)	-
<i>sJIA status</i>					
Active arthritis ⁶	10% (4/39)		10% (1/10)	10% (3/29)	1(0.072-60)
Active systemic symptoms ⁶	15% (6/39)		10% (1/10)	17% (5/29)	1.8(0.17-98)
Inactive sJIA ⁶	62% (24/39)		60% (6/10)	62% (18/29)	1.1(0.18-5.9)

#, P < 0.1; *, P < 0.05; **, P < 0.01; *** P < 0.001. For odds ratios (OR), 95 percent confidence intervals (95% CI) shown; yrs, years; na, not applicable.

¹Cases satisfying International League of Associations for Rheumatology (ILAR) classification as sJIA (De Benedetti and Schneider in Petty et al⁹, with expert consensus modifications (DeWitt et al²; see Methods, Supp. Appendix)

²Asymptomatic and normal chest CT (minimal scarring allowed); 2 resolved disease 1 year after discontinuing cytokine inhibitors.

³More than one is possible; notably, MAS and pulmonary hypertension did not co-occur.

⁴Based on echocardiogram and/or cardiac catheterization. Enlarged pulmonary artery on chest CT was not sufficient.

⁵Excludes 2 cases with oxygen-dependent lung disease prior to sJIA (ventilator dependent lung disease of unknown etiology (1), lung disease from prematurity(1))

⁶Per case reporter

Table S8: Clinical features of cases scoring as DReSS by RegiSCAR^{1,2}

	case 1	case 2	case 3	case 4	case 5	case 6	case 7	case 8	case 9	case 10	case 11	case 12	case 13
RegiSCAR score	6	7	8	8	6	6	6	6	7	7	7	7	6
Features at peak of eosinophilia													
Peak eosinophils (absolute count; nml <500/uL)	1708	1600	4380	6552	na	13156	954	1600	9487	1472	3888	754	1240
Oral prednisone dose (mg/kg/d)	0.5	0	2	1	na	0	0.4	1	0.5	0.3	0.2	2	0
Rash included the face	yes	yes	yes	not specified	not specified	yes	yes	yes	yes	yes	yes	yes	no
Cytokine inhibitor	Canakinumab	Anakinra	Anakinra	Anakinra	Anakinra	Anakinra	Anakinra	Anakinra	Canakinumab	Anakinra	Anakinra	Anakinra	Canakinumab
Other ongoing medication (>2weeks)	none	none	none	none	none	none	methotrexate	none	none	none	none	none	methotrexate
Timing (months)													
Inhibitor start to eosinophil peak (months)	0.7	1.5	1.5 ³	1.9	2	2.8	3.1	3.1	4.2	5.9	7.6	8.0 ³	10.7
Eosinophil peak to lung disease diagnosis (months)	5.2	12.2 ⁴	0.8	1.9	7.5	1.8	1.8	0.3	6.4	7.9	9	0	2
Stopped inhibitor promptly⁵	yes	no	no	no	no	no	yes	no	yes	yes	yes	no	yes
Outcome	Alive	Deceased	Deceased	Deceased	Deceased	Deceased	Deceased ⁶	Deceased	Deceased ⁶	Alive	Alive	Deceased	Alive

na, not available

¹ RegiSCAR classification: 6-9 as 'definite', 4-5 as 'probable', 2-3 as 'possible' and 0-1 as 'no case'.²⁷ Rash consistent with DReSS was present in all cases shown.⁷

² Cases were scored retrospectively. 13 cases scoring as 'definite' are shown; 8 more cases scored as 'probable'.

³ Months after dose escalation to 8 mg/kg/d (case 3) and to >4mg/kg/d (case 12). Standard dose is 2mg/kg/d.

⁴ Anakinra was stopped for 2 months then restarted. Lung disease diagnosed < 6 months after restart.

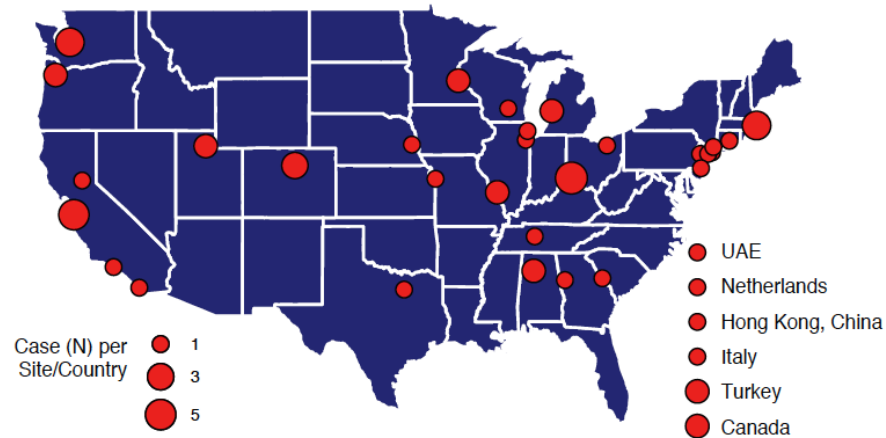
⁵ From peak eosinophiia, within 2 doses for canakinumab (<2 months) and within 2 weeks for anakinra.

⁶ Implicated IL-1 inhibitor restarted <2 weeks prior to death.

Supplementary figures

Figure S1

A



B

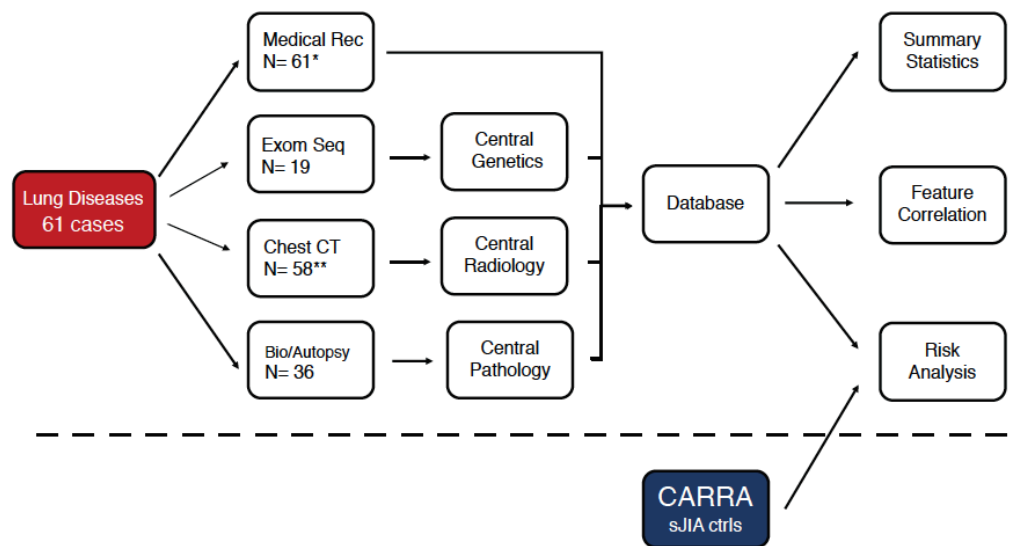


Figure S1: Study design

Panel A: Sites for the multi-center cohort, with patients recruited from 37 hospitals. Three additional cases from Sweden and 1 from Italy met diagnostic criteria, but these lacked sufficient information for inclusion. Panel B: The study pipeline, indicating the use of the CARRA registry for sJIA controls without known lung disease.

Figure S2

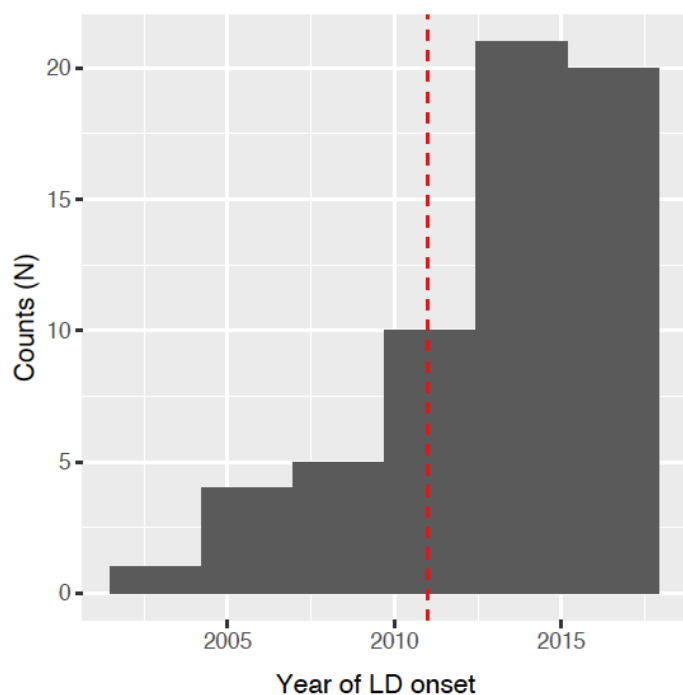


Figure S2: Distribution of lung disease diagnosis dates in this report

Cases include 6 previously reported in Kimura et al. Red dashed line denotes the cut-off date (February 2011) of the Kimura et. al. study.²⁸

Figure S3

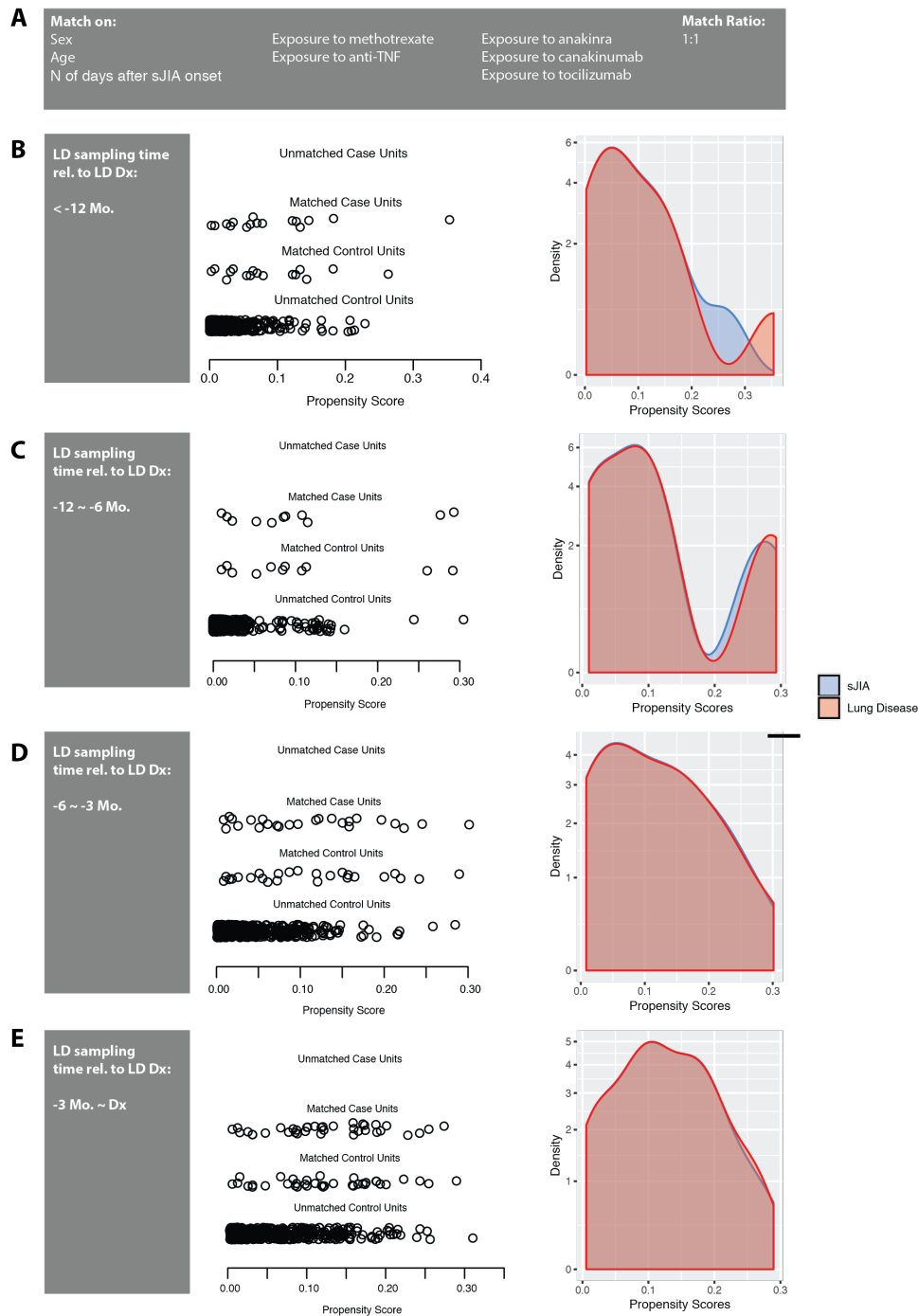
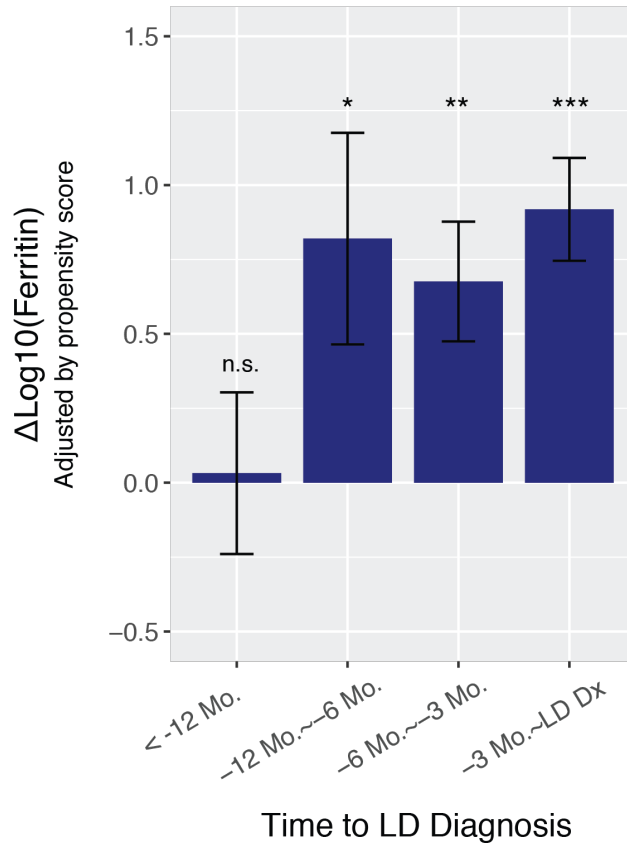


Figure S3: Propensity matching between the lung disease (LD) cases and sJIA control cases from the CARRA Registry (CR) to investigate temporal changes in serum ferritin. For each time period, defined by time of serum sampling of LD patients relative to LD diagnosis, the same set of confounders were used to find the closest matches in controls (CR). Panel A lists the confounders. Panels B-D demonstrate the matching of propensity scores (middle and right) in each time period (left).

Figure S4



(sJIA ctrls matched to lung disease cases by N of days after sJIA onset)

Figure S4: Serum ferritin demonstrated different trends among LD cases and sJIA controls

After the propensity matching, the residual variations from variance were further reduced by multiple logistic regression (MLR), in which the propensity scores were used as a co-variate.

After the adjustment, the differences between LD cases and sJIA controls ($\Delta\log_{10}(\text{ferritin})$) remained significant within 12 months before LD diagnosis, but not significant further upstream in the timeline, which is consistent with **figure 1G**. Significance was defined by whether the coefficients deviated from 0 in the MLR. Standard errors are shown. n.s., $P > 0.1$; #, $P < 0.1$; *, $P < 0.05$; **, $P < 0.01$; ***, $P < 0.001$.

Figure S5

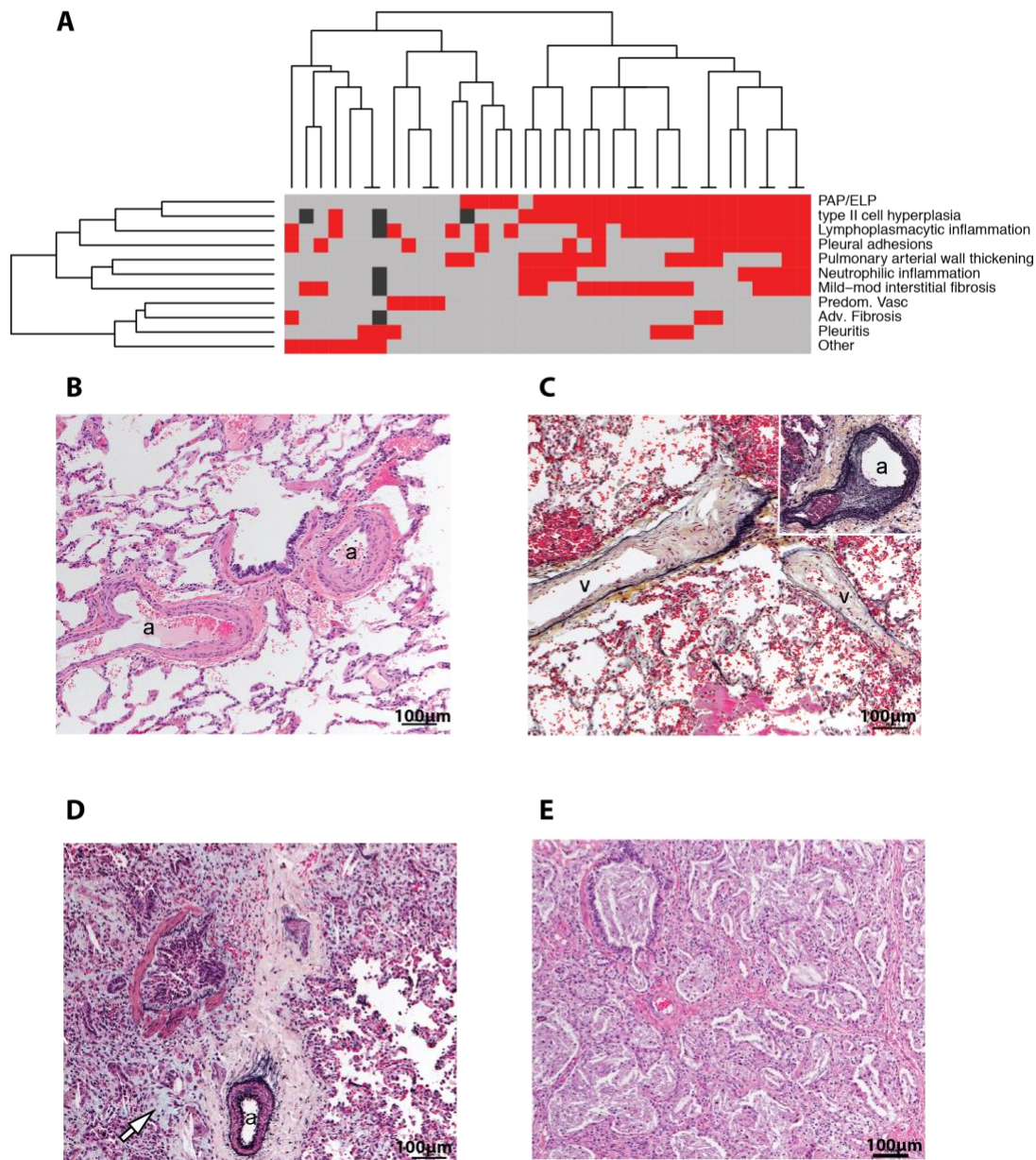


Figure S5A. Heat map of phenotypes of 36 cases with tissue samples, after clustering by Euclidean distance. Presence (red), absence (grey), and missing values (dark grey) are indicated. **Figure S5B-E: Additional findings in histologic spectrum of sjIA-LD 4 biopsies** without PAP/ELP had occlusive intimal hyperplasia/fibrosis of medium/small arteries; within these, 2 had intimal fibrosis within veins, suspicious for veno-occlusive disease. **B.** Pulmonary arterial vasculopathy by H&E staining. **C.** Movat pentachrome stain highlighting occlusive intimal hyperplasia in pulmonary arteries (insert) and veins. **D.** Movat pentachrome stain (white arrow) demonstrating patchy fibrotic remodeling (normal lung architecture right lower corner) and arterial wall thickening. **E.** PAP/ELP in a rare not pre-exposed case. a=artery; v=vein.

Figure S6

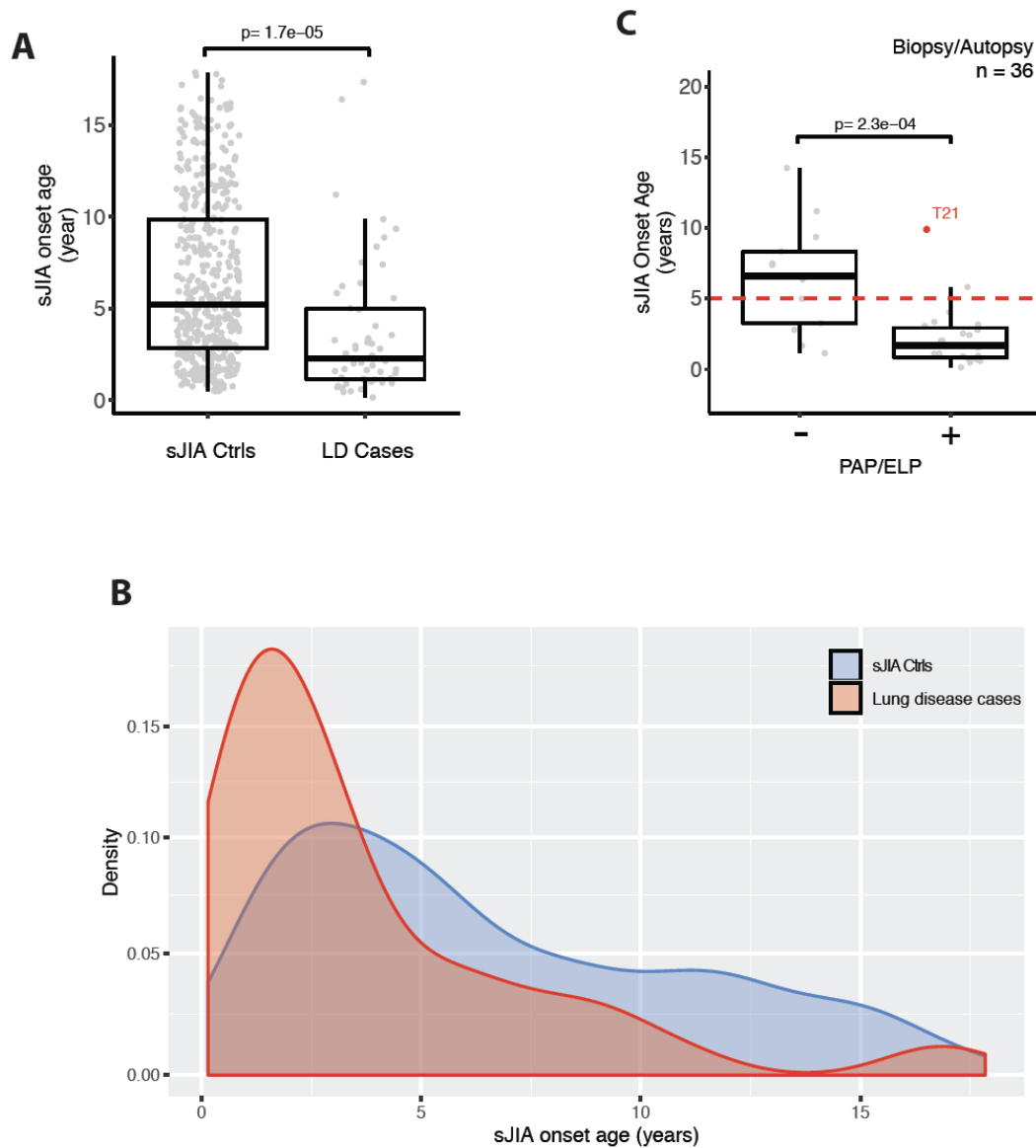


Figure S6: Age at sJIA onset: effects and distribution. A. Early onset sJIA and risk of lung disease (LD) LD cohort is compared to sJIA cases without known LD in the CARRA registry. Median and interquartile ranges shown. B. Distributions of age of sJIA onset in LD cases and in sJIA cases in CARRA registry. C. Early onset sJIA and risk of PAP/ELP pathology. LD cohort is compared to sJIA cases without known LD in the CARRA registry. Median and interquartile ranges shown; an outlier with T21 is indicated.

Figure S7

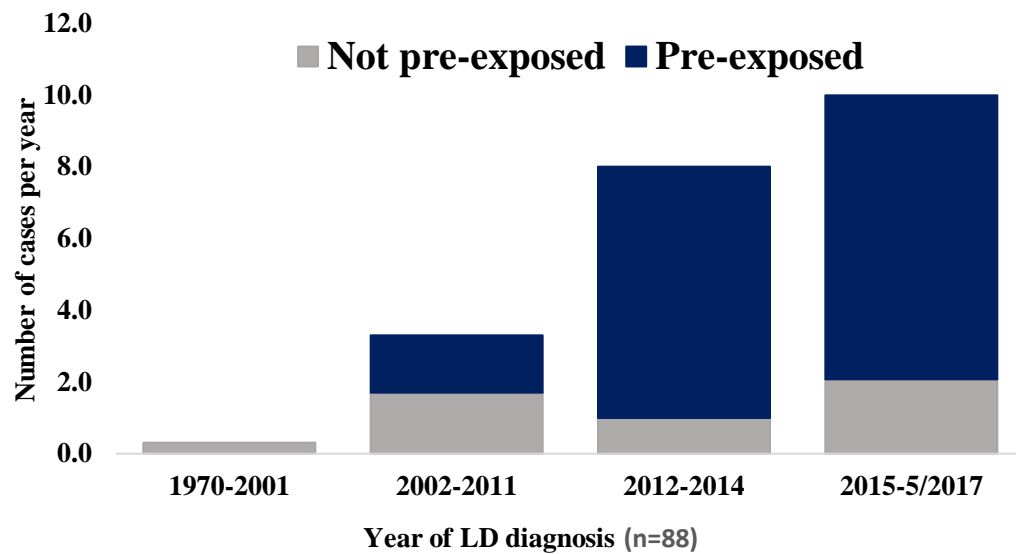


Figure S7: Proportion of reported lung disease cases exposed to IL-1/IL-6 inhibitors from 1970 to mid 2017

Annual incidence of LD, including this report and all previously published cases.²⁸⁻³² Proportions exposed (blue) or not (gray) to anti-IL-1/IL-6 inhibitors are indicated.

Figure S8

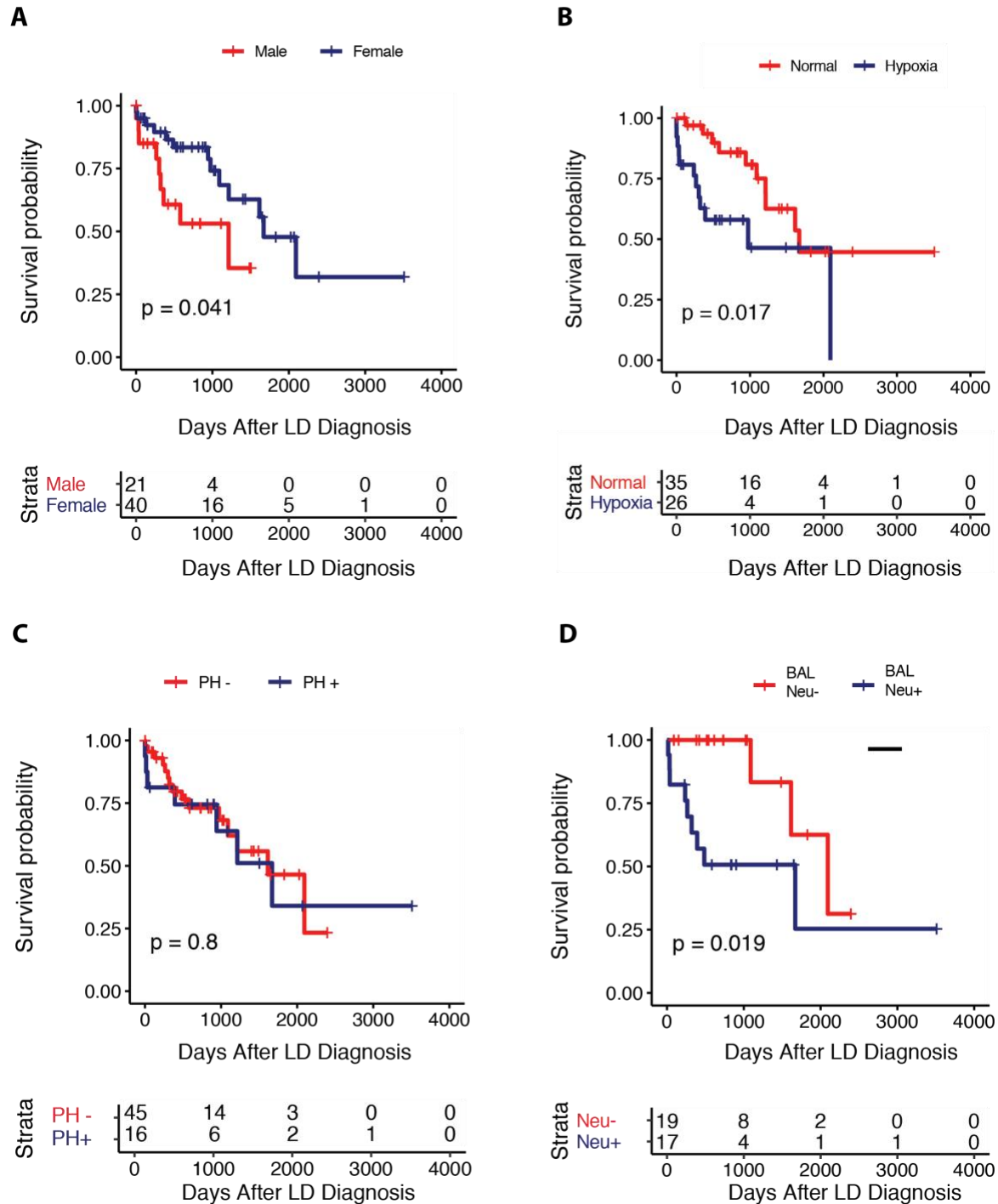
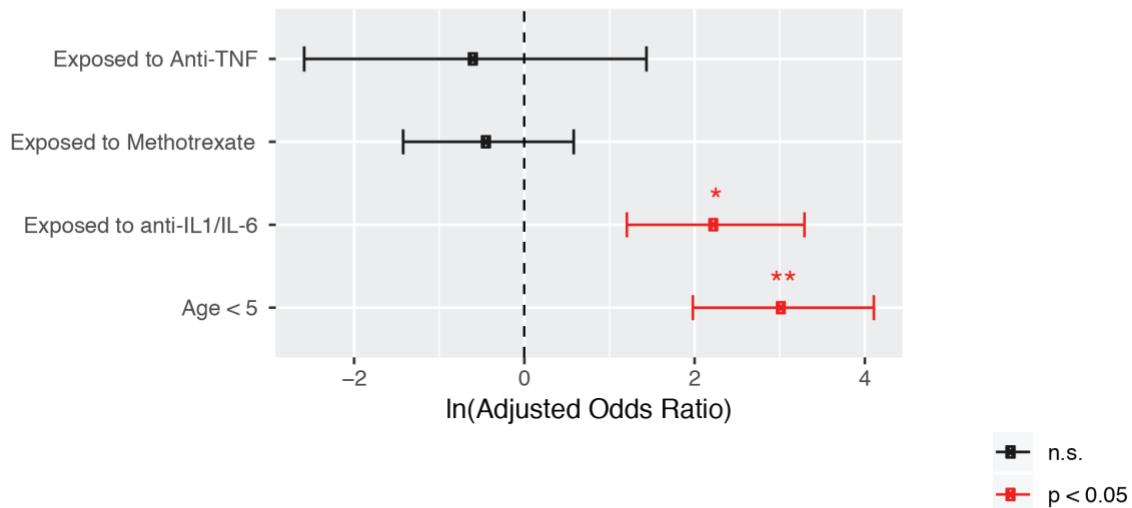


Figure S8: Survival outcomes of lung disease (LD) cases

Panels show the survival outcomes of LD cases, grouped by: A. sex; B. hypoxia at initial evaluation C. pulmonary hypertension (PH) ever during data collection E. predominantly neutrophilic bronchial lavage fluid (BAL), scored as >40% neutrophils. The number of cases for each group at a given time point is shown. The statistics were performed using log rank test.

Figure S9

A



B

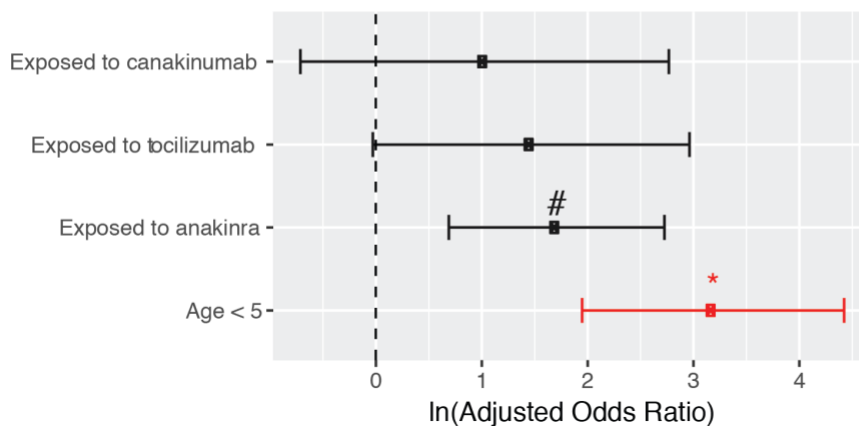


Figure S9: Multiple logistic regression (MLR) models identified clinical characteristics associated with PAP/ELP in the LD cohort

Two different MLR models were used to isolate the individual association between clinical characteristics and PAP/ELP incidence in the LD cohort. The adjusted odds ratios and standard errors were calculated from MLR. Panel A: anti-IL-1/IL-6 exposure prior to lung disease was significantly associated with PAP/ELP incidence, even after adjustment for exposures to other medications (methotrexate (MTX) and anti-TNF) and sJIA onset age. Panel B: the effect of individual anti-IL-1/IL-6 (anakinra, canakinumab, tocilizumab) cannot be univocally called. n.s., $P > 0.1$; #, $P < 0.1$; *, $P < 0.05$; **, $P < 0.01$; ***, $P < 0.001$.

Figure S10

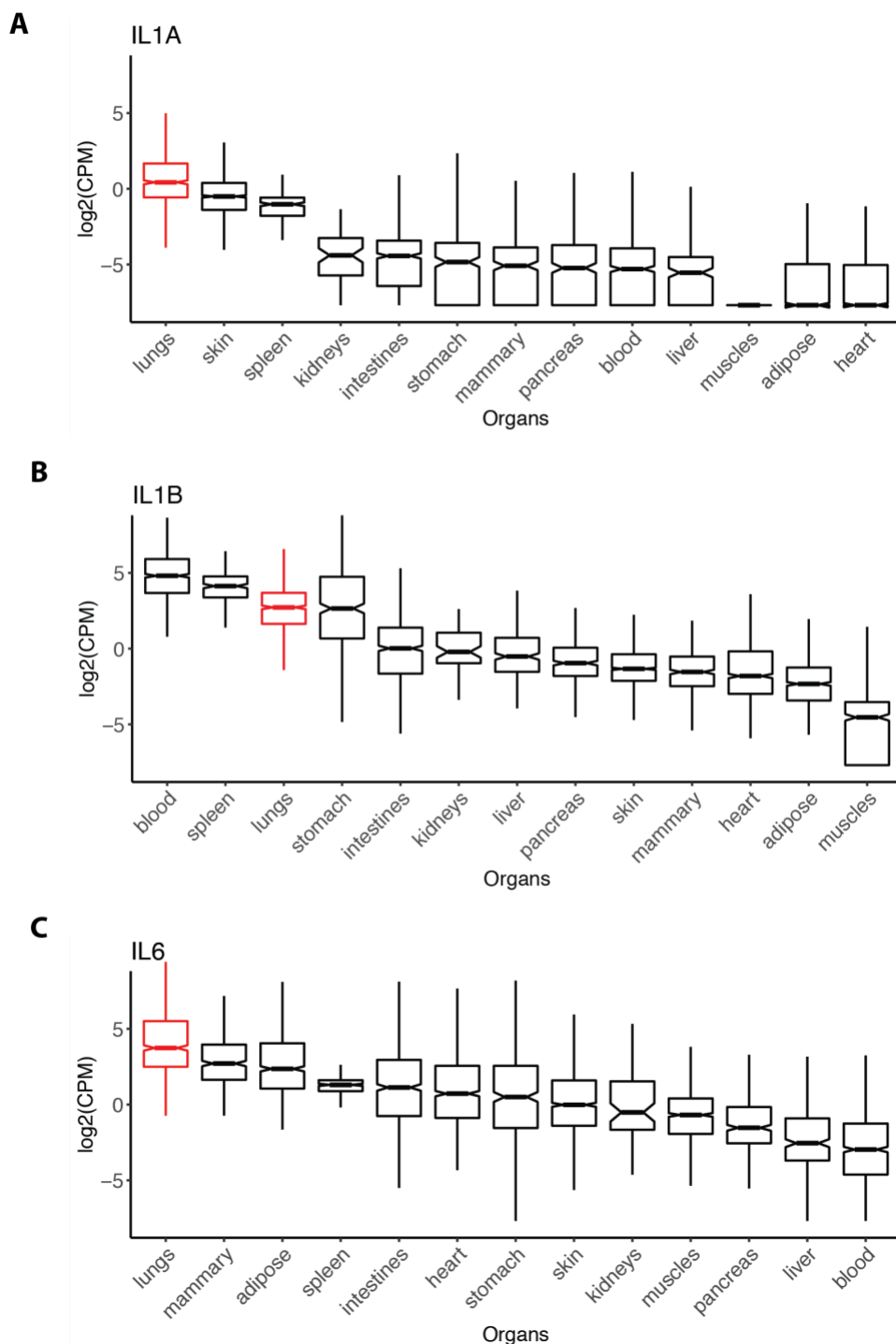


Figure S10: RNA abundance of IL-1/IL-6 across organs

Expression distributions for IL-1A (Panel A), IL-1B (Panel B) and IL-6 (Panel C); lung highlighted in red. Data are derived from GTex data, which are RNAseq data from tissues of healthy subjects.³³ RNA abundance represented as CPM (Counts-Per-Million). In healthy tissues, IL-1A/B and IL-6 RNA levels in the lung are similar or higher than in immune cell enriched tissues, e.g., spleen and blood.

References for Supplementary Tables and Figures

1. Ravelli A, Minoia F, Davi S, et al. 2016 Classification Criteria for Macrophage Activation Syndrome Complicating Systemic Juvenile Idiopathic Arthritis A European League Against Rheumatism/American College of Rheumatology/Paediatric Rheumatology International Trials Organisation Collaborative Initiative. *ResearchGate* 2016;75(3):481-89. doi: 10.1136/annrheumdis-2015-208982
2. DeWitt EM, Kimura Y, Beukelman T, et al. Consensus treatment plans for new-onset systemic juvenile idiopathic arthritis. *Arthritis Care Res (Hoboken)* 2012;64(7):1001-10. doi: 10.1002/acr.21625
3. Soldin OP, Bierbower LH, Choi JJ, et al. Serum iron, ferritin, transferrin, total iron binding capacity, hs-CRP, LDL cholesterol and magnesium in children; new reference intervals using the Dade Dimension Clinical Chemistry System. *Clin Chim Acta* 2004;342(1-2):211-7. doi: 10.1016/j.cccn.2004.01.002
4. van Gent R, van Tilburg CM, Nibbelke EE, et al. Refined characterization and reference values of the pediatric T- and B-cell compartments. *Clin Immunol* 2009;133(1):95-107. doi: 10.1016/j.clim.2009.05.020 [published Online First: 2009/07/07]
5. Meyer KC, Raghu G, Baughman RP, et al. An official American Thoracic Society clinical practice guideline: the clinical utility of bronchoalveolar lavage cellular analysis in interstitial lung disease. *Am J Respir Crit Care Med* 2012;185(9):1004-14. doi: 10.1164/rccm.201202-0320ST [published Online First: 2012/05/03]
6. Caro-Domínguez P, Compton G, Humpl T, et al. Pulmonary arterial hypertension in children: diagnosis using ratio of main pulmonary artery to ascending aorta diameter as determined by multi-detector computed tomography. *Pediatr Radiol* 2016;46(10):1378-83. doi: 10.1007/s00247-016-3636-5 [published Online First: 2016/05/19]
7. Martínez-Cabriales SA, Rodríguez-Bolaños F, Shear NH. Drug Reaction with Eosinophilia and Systemic Symptoms (DRESS): How Far Have We Come? *Am J Clin Dermatol* 2019 doi: 10.1007/s40257-018-00416-4 [published Online First: 2019/01/17]
8. Kardaun SH, Sidoroff A, Valeyrie-Allanore L, et al. Variability in the clinical pattern of cutaneous side-effects of drugs with systemic symptoms: does a DRESS syndrome really exist? *Br J Dermatol* 2007;156(3):609-11. doi: 10.1111/j.1365-2133.2006.07704.x
9. De Benedetti F, Schneider R. Systemic Juvenile Idiopathic Arthritis. In: Petty R, Lindsley C, Laxer R, Wedderburn L, eds. *Cassidy's Textbook of Pediatric Rheumatology*. Seventh edition. ed. Philadelphia, PA: Elsevier 2016:206-216.
10. Lek M, Karczewski KJ, Minikel EV, et al. Analysis of protein-coding genetic variation in 60,706 humans. *Nature* 2016;536(7616):285-91. doi: 10.1038/nature19057
11. Jagadeesh KA, Wenger AM, Berger MJ, et al. M-CAP eliminates a majority of variants of uncertain significance in clinical exomes at high sensitivity. *Nat Genet* 2016;48(12):1581-86. doi: 10.1038/ng.3703 [published Online First: 2016/10/24]
12. Ng PC, Henikoff S. SIFT: Predicting amino acid changes that affect protein function. *Nucleic Acids Res* 2003;31(13):3812-4.
13. Adzhubei IA, Schmidt S, Peshkin L, et al. A method and server for predicting damaging missense mutations. *Nat Methods* 2010;7(4):248-9. doi: 10.1038/nmeth0410-248

14. Kent WJ, Sugnet CW, Furey TS, et al. The human genome browser at UCSC. *Genome Res* 2002;12(6):996-1006. doi: 10.1101/gr.229102
15. Siepel A, Pollard KS, Haussler D. New methods for detecting lineage-specific selection. Papers from the 10th Annual International Conference on Research in Computational Molecular Biology (RECOMB 2006), Venice, Italy, April 2006. *J Comput Biol* 2007;14(5):190-205. doi: 10.1089/cmb.2007.00P1
16. Stenson PD, Mort M, Ball EV, et al. The Human Gene Mutation Database: towards a comprehensive repository of inherited mutation data for medical research, genetic diagnosis and next-generation sequencing studies. *Hum Genet* 2017;136(6):665-77. doi: 10.1007/s00439-017-1779-6 [published Online First: 2017/03/27]
17. Kaufman KM, Linghu B, Szustakowski JD, et al. Whole-exome sequencing reveals overlap between macrophage activation syndrome in systemic juvenile idiopathic arthritis and familial hemophagocytic lymphohistiocytosis. *Arthritis Rheumatol* 2014;66(12):3486-95. doi: 10.1002/art.38793
18. Tredano M, Griesse M, Brasch F, et al. Mutation of SFTPC in infantile pulmonary alveolar proteinosis with or without fibrosing lung disease. *Am J Med Genet A* 2004;126A(1):18-26. doi: 10.1002/ajmg.a.20670
19. Hadchouel A, Wieland T, Griesse M, et al. Biallelic Mutations of Methionyl-tRNA Synthetase Cause a Specific Type of Pulmonary Alveolar Proteinosis Prevalent on Réunion Island. *Am J Hum Genet* 2015;96(5):826-31. doi: 10.1016/j.ajhg.2015.03.010 [published Online First: 2015/04/23]
20. Schulert GS, Zhang M, Fall N, et al. Whole-Exome Sequencing Reveals Mutations in Genes Linked to Hemophagocytic Lymphohistiocytosis and Macrophage Activation Syndrome in Fatal Cases of H1N1 Influenza. *J Infect Dis* 2016;213(7):1180-8. doi: 10.1093/infdis/jiv550 [published Online First: 2015/11/23]
21. Janow G, Schanberg LE, Setoguchi S, et al. The Systemic Juvenile Idiopathic Arthritis Cohort of the Childhood Arthritis and Rheumatology Research Alliance Registry: 2010-2013. *J Rheumatol* 2016;43(9):1755-62. doi: 10.3899/jrheum.150997 [published Online First: 2016/06/17]
22. Russo RA, Katsicas MM. Patients with very early-onset systemic juvenile idiopathic arthritis exhibit more inflammatory features and a worse outcome. *J Rheumatol* 2013;40(3):329-34. doi: 10.3899/jrheum.120386 [published Online First: 2013/01/15]
23. Wallace CA, Giannini EH, Huang B, et al. American College of Rheumatology provisional criteria for defining clinical inactive disease in select categories of juvenile idiopathic arthritis. *Arthritis Care Res (Hoboken)* 2011;63(7):929-36. doi: 10.1002/acr.20497 [published Online First: 2011/07/01]
24. Pardeo M, Pires Marafon D, Insalaco A, et al. Anakinra in Systemic Juvenile Idiopathic Arthritis: A Single-center Experience. *J Rheumatol* 2015;42(8):1523-7. doi: 10.3899/jrheum.141567 [published Online First: 2015/06/01]
25. Nigrovic PA, Mannion M, Prince FH, et al. Anakinra as first-line disease-modifying therapy in systemic juvenile idiopathic arthritis: report of forty-six patients from an international multicenter series. *Arthritis Rheum* 2011;63(2):545-55. doi: 10.1002/art.30128
26. Behrens EM, Beukelman T, Gallo L, et al. Evaluation of the presentation of systemic onset juvenile rheumatoid arthritis: data from the Pennsylvania Systemic Onset Juvenile

- Arthritis Registry (PASOJAR). *J Rheumatol* 2008;35(2):343-8. [published Online First: 2007/12/19]
27. Kardaun SH, Mockenhaupt M, Roujeau JC. Comments on: DRESS syndrome. *J Am Acad Dermatol* 2014;71(5):1000-00.e2. doi: 10.1016/j.jaad.2013.11.053 [published Online First: 2014/10/15]
28. Kimura Y, Weiss JE, Haroldson KL, et al. Pulmonary hypertension and other potentially fatal pulmonary complications in systemic juvenile idiopathic arthritis. *Arthritis Care Res (Hoboken)* 2013;65(5):745-52. doi: 10.1002/acr.21889 [published Online First: 2012/11/10]
29. Athreya BH, Doughty RA, Bookspan M, et al. Pulmonary manifestations of juvenile rheumatoid arthritis. A report of eight cases and review. *Clin Chest Med* 1980;1(3):361-74.
30. Padeh S, Laxer RM, Silver MM, et al. Primary pulmonary hypertension in a patient with systemic-onset juvenile arthritis. *Arthritis & Rheumatism* 1991;34(12):1575-79. doi: 10.1002/art.1780341216
31. Sato K, Takahashi H, Amano H, et al. Diffuse progressive pulmonary interstitial and intra-alveolar cholesterol granulomas in childhood. *Eur Respir J* 1996;9(11):2419-22.
32. Schultz R, Mattila J, Gappa M, et al. Development of progressive pulmonary interstitial and intra-alveolar cholesterol granulomas (PICG) associated with therapy-resistant chronic systemic juvenile arthritis (CJA). *Pediatric Pulmonology* 2001;32(5):397-402. doi: 10.1002/ppul.1149
33. Consortium G. Human genomics. The Genotype-Tissue Expression (GTEx) pilot analysis: multitissue gene regulation in humans. *Science* 2015;348(6235):648-60. doi: 10.1126/science.1262110 [published Online First: 2015/05/07]