

Supplementary Information for: Clustering of susceptible individuals within households can drive an outbreak: an individual-based model exploration

Elise Kuylen^{1,2,*}, Lander Willem¹, Jan Broeckhove³, Philippe Beutels¹, and Niel Hens^{1,4}

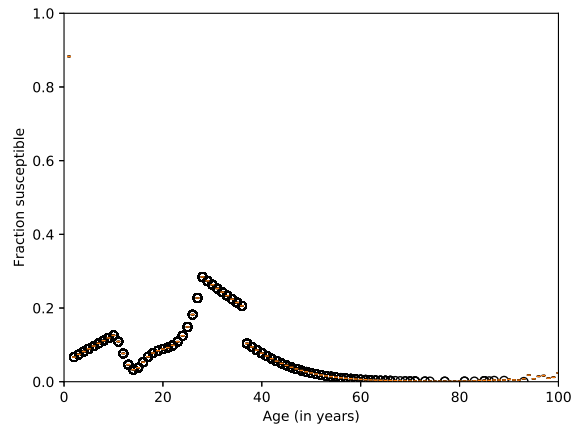
¹Centre for Health Economics Research and Modelling Infectious Diseases (CHERMID), Vaccine and Infectious Disease Institute, University of Antwerp, Antwerp, Belgium

²Discipline Group Computer Sciences, Hasselt University, Hasselt, Belgium

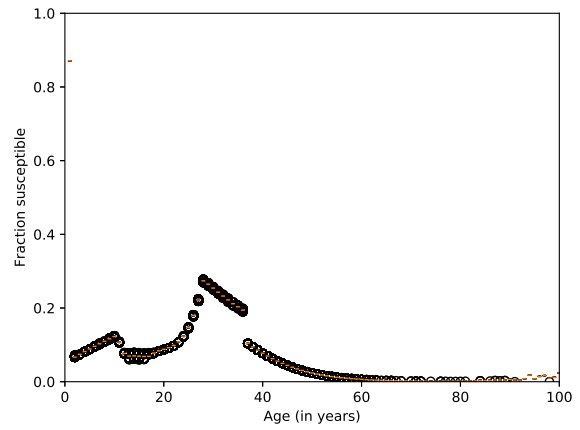
³IDLab, Department of Mathematics and Computer Science, University of Antwerp, Antwerp, Belgium

⁴I-BioStat, Data Science Institute, Hasselt University, Hasselt, Belgium

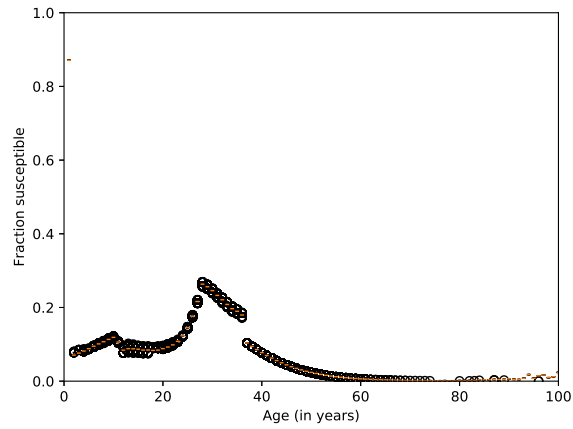
*elise.kuylen@uantwerpen.be



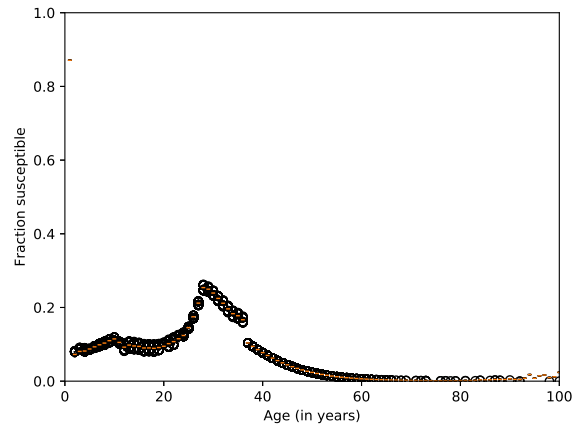
(a) Clustering level = 0.00



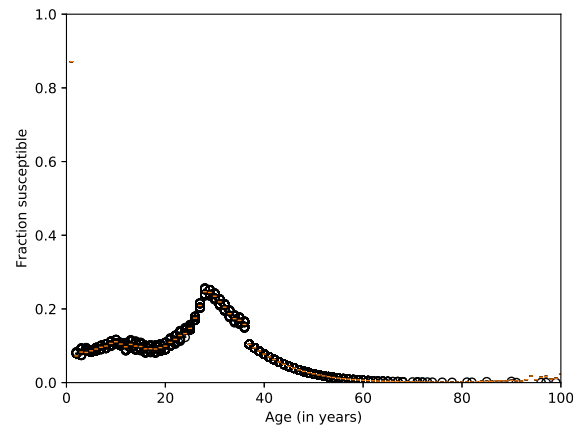
(b) Clustering level = 0.25



(c) Clustering level = 0.50

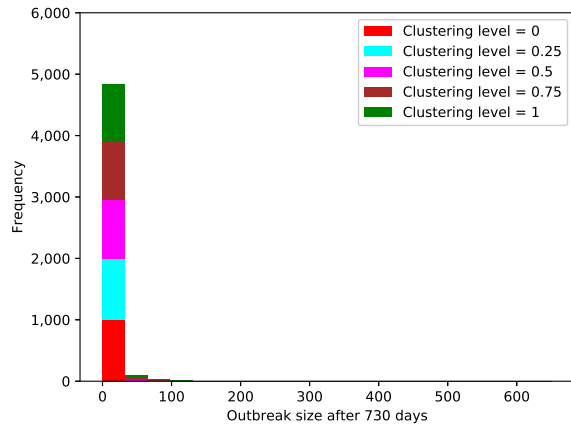


(d) Clustering level = 0.75

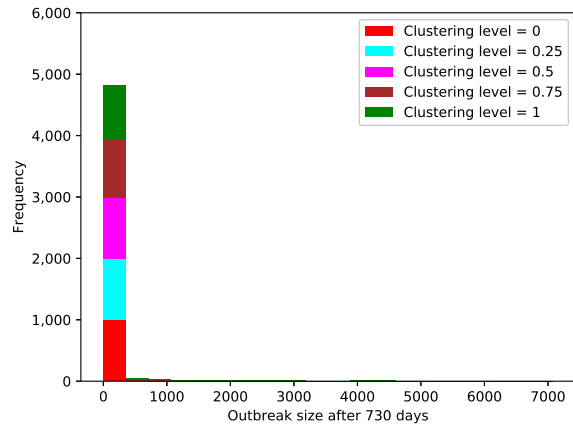


(e) Clustering level = 1.00

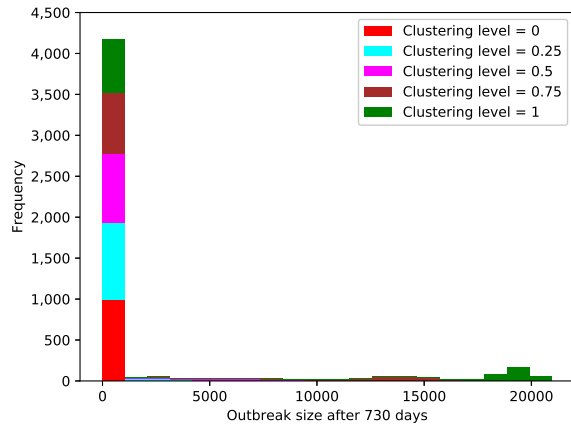
Supplementary Figure S1. Box-plots of immunity levels by age for target clustering levels 0.00, 0.25, 0.50, 0.75 and 1.00, each over 13,000 stochastic simulations.



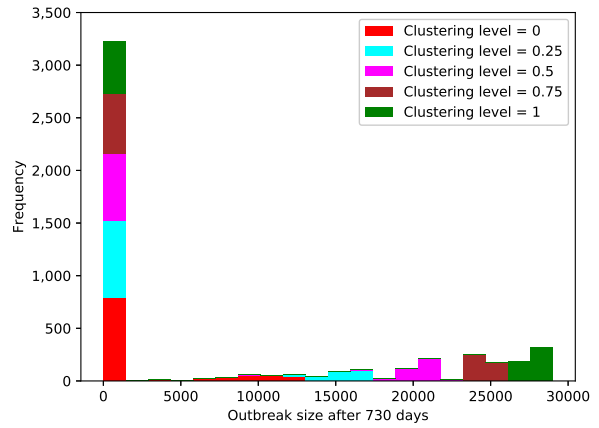
(a) Transmission probability = 0.20 ($\hat{R}_0 = 6.80$)



(b) Transmission probability = 0.25 ($\hat{R}_0 = 8.38$)

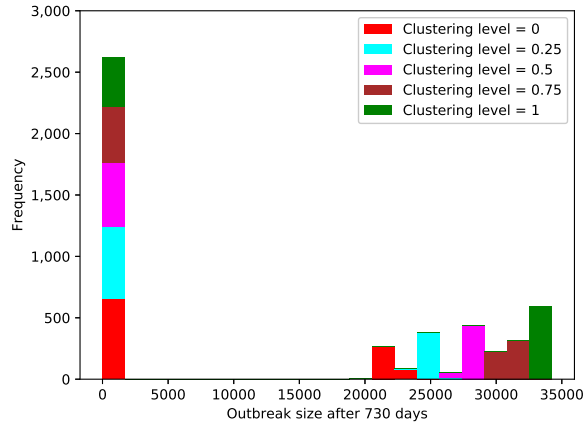


(c) Transmission probability = 0.30 ($\hat{R}_0 = 9.91$)

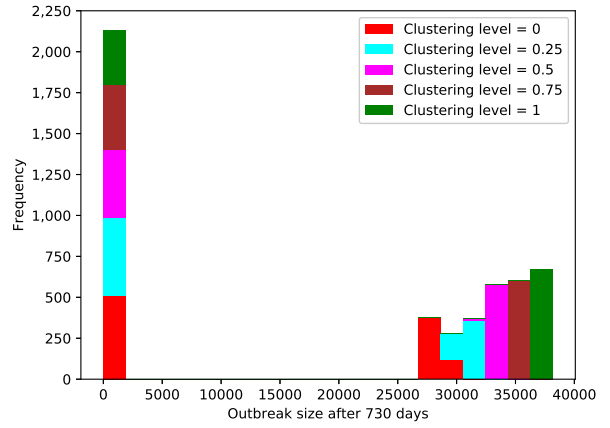


(d) Transmission probability = 0.35 ($\hat{R}_0 = 11.38$)

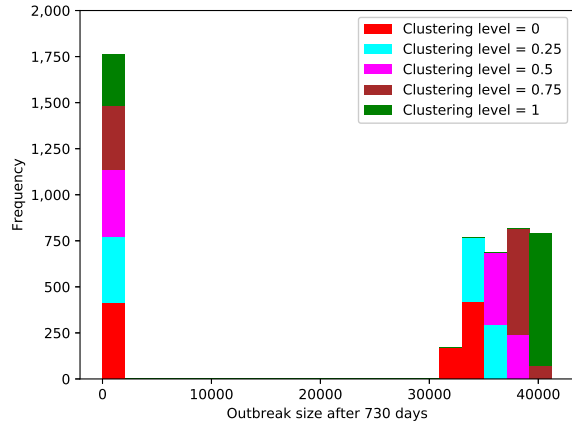
Supplementary Figure S2. Histograms of frequencies of outbreak sizes for clustering levels 0, 0.25, 0.5, 0.75, and 1 over transmission probabilities from 0.20 ($\hat{R}_0 = 6.80$) to 0.35 ($\hat{R}_0 = 11.38$). Results over 1,000 stochastic simulations per combination of transmission probability and clustering level.



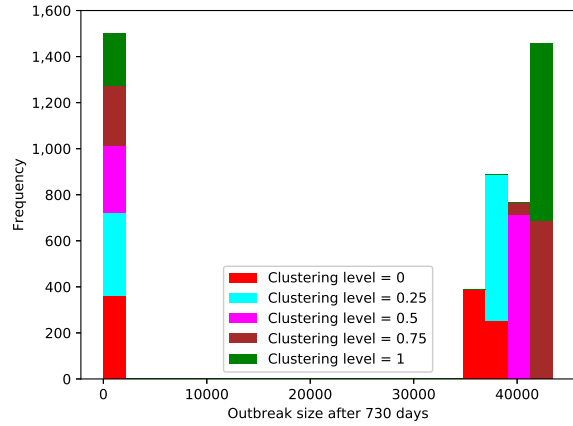
(a) Transmission probability = 0.40 ($\hat{R}_0 = 12.80$)



(b) Transmission probability = 0.45 ($\hat{R}_0 = 14.16$)

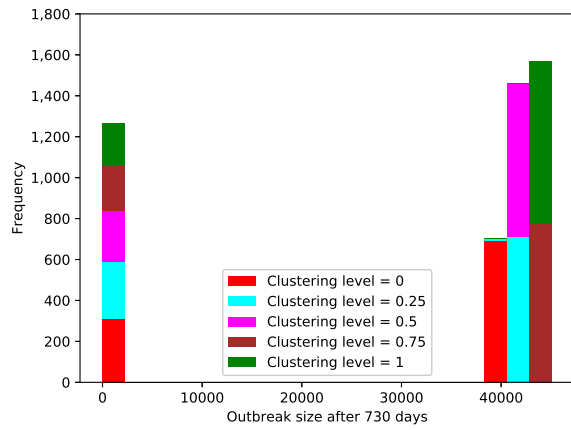


(c) Transmission probability = 0.50 ($\hat{R}_0 = 15.48$)

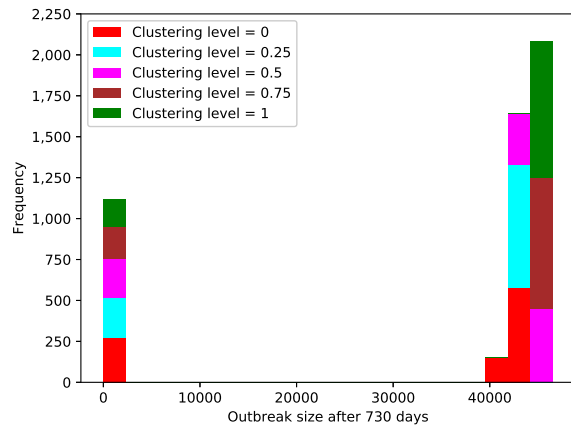


(d) Transmission probability = 0.55 ($\hat{R}_0 = 16.76$)

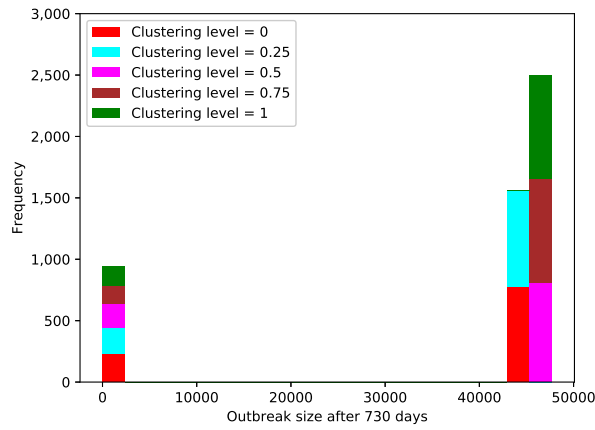
Supplementary Figure S3. Histograms of frequencies of outbreak sizes for clustering levels 0, 0.25, 0.5, 0.75, and 1 over transmission probabilities from 0.40 ($\hat{R}_0 = 12.80$) to 0.55 ($\hat{R}_0 = 16.76$). Results over 1,000 stochastic simulations per combination of transmission probability and clustering level.



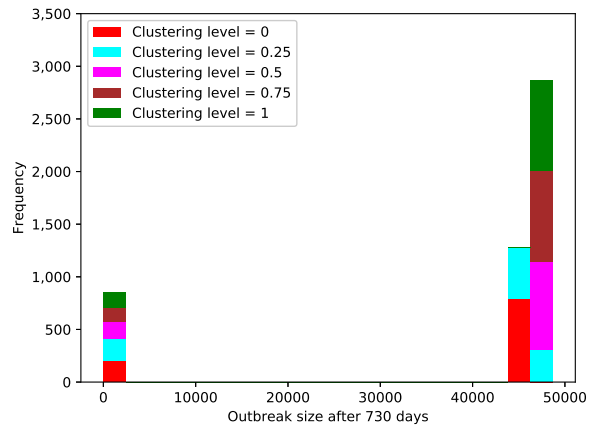
(a) Transmission probability = 0.60 ($\hat{R}_0 = 17.99$)



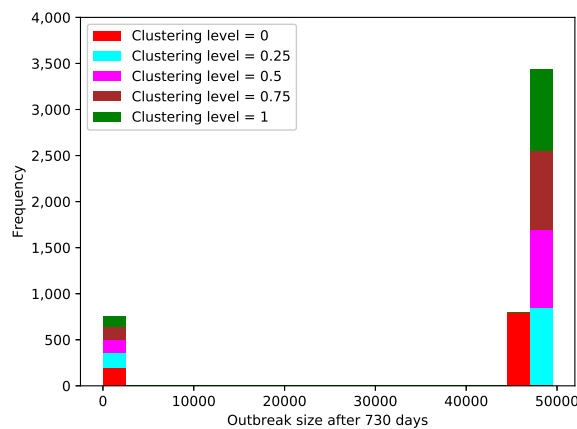
(b) Transmission probability = 0.65 ($\hat{R}_0 = 19.19$)



(c) Transmission probability = 0.70 ($\hat{R}_0 = 20.35$)

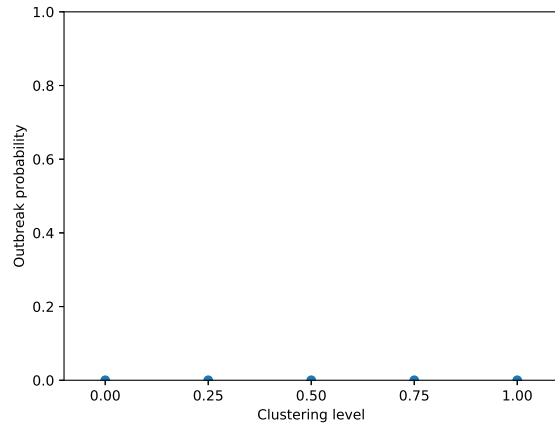


(d) Transmission probability = 0.75 ($\hat{R}_0 = 21.48$)

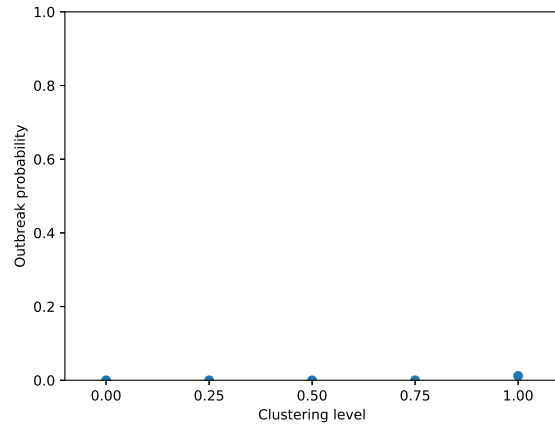


(e) Transmission probability = 0.80 ($\hat{R}_0 = 22.58$)

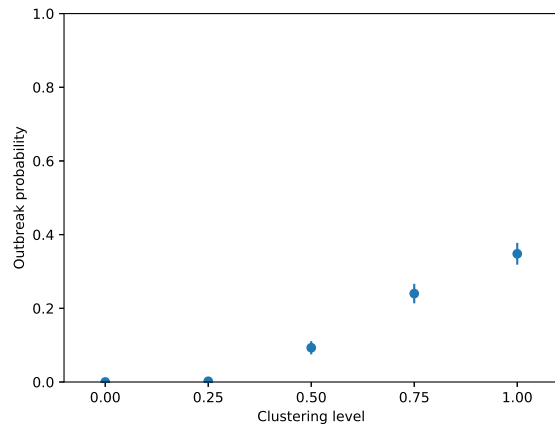
Supplementary Figure S4. Histograms of frequencies of outbreak sizes for clustering levels 0, 0.25, 0.5, 0.75, and 1 over transmission probabilities from 0.60 ($\hat{R}_0 = 17.99$) to 0.80 ($\hat{R}_0 = 22.58$). Results over 1,000 stochastic simulations per combination of transmission probability and clustering level.



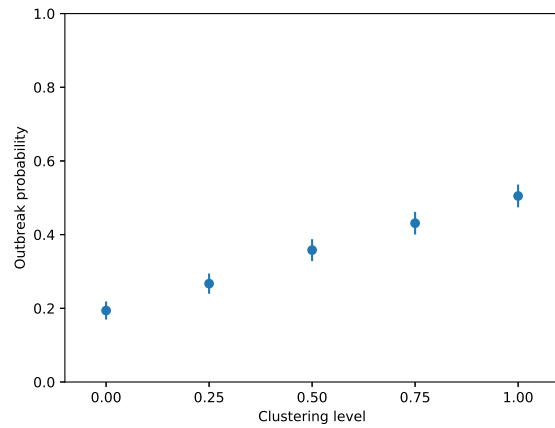
(a) Transmission probability = 0.20 ($\hat{R}_0 = 6.80$)



(b) Transmission probability = 0.25 ($\hat{R}_0 = 8.38$)

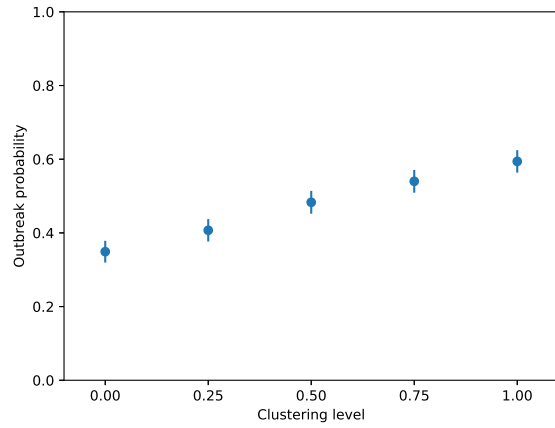


(c) Transmission probability = 0.30 ($\hat{R}_0 = 9.91$)

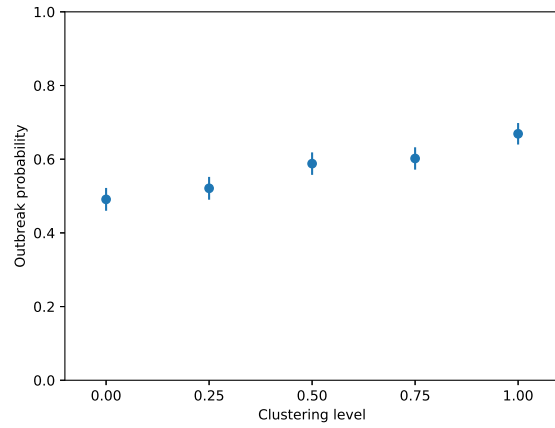


(d) Transmission probability = 0.35 ($\hat{R}_0 = 11.38$)

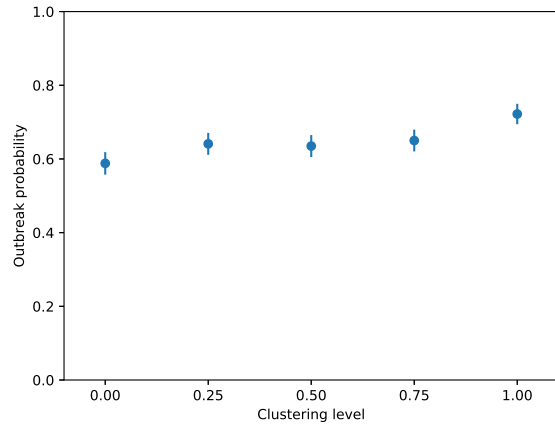
Supplementary Figure S5. Probability of the occurrence of a persistent outbreak for clustering levels 0, 0.25, 0.5, 0.75, and 1 over transmission probabilities from 0.20 ($\hat{R}_0 = 6.80$) to 0.35 ($\hat{R}_0 = 11.38$). Results over 1,000 stochastic simulations per combination of transmission probability and clustering level. Error bars indicate 95% confidence intervals, for scenarios where enough (at least 5 of each) persistent outbreaks and extinction cases occurred.



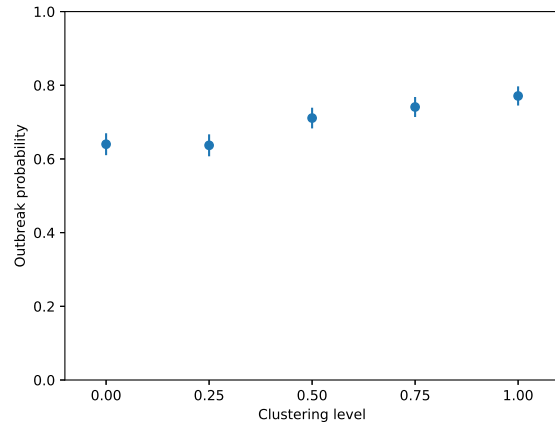
(a) Transmission probability = 0.40 ($\hat{R}_0 = 12.80$)



(b) Transmission probability = 0.45 ($\hat{R}_0 = 14.16$)

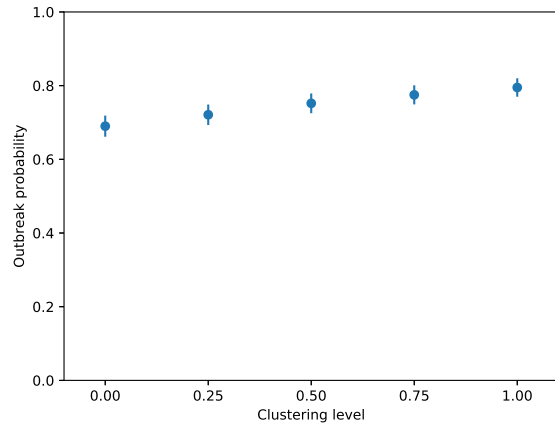


(c) Transmission probability = 0.50 ($\hat{R}_0 = 15.48$)

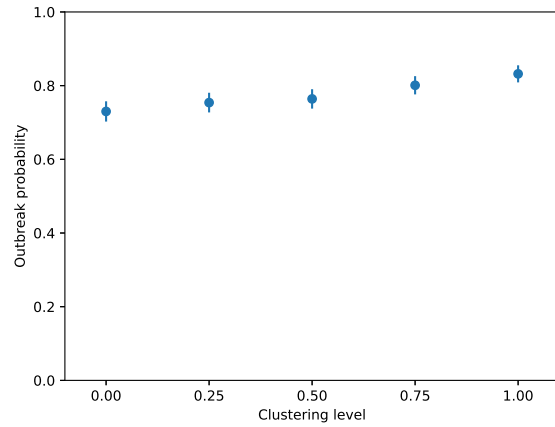


(d) Transmission probability = 0.55 ($\hat{R}_0 = 16.76$)

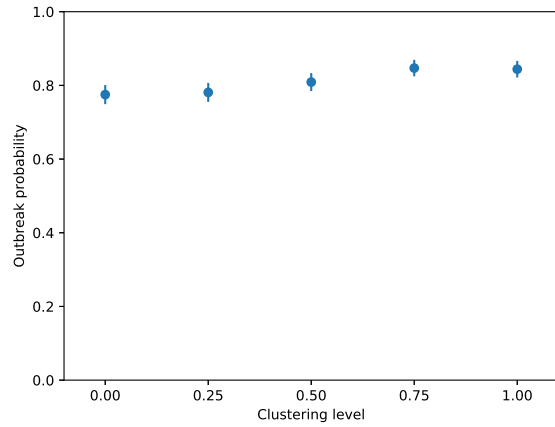
Supplementary Figure S6. Probability of the occurrence of a persistent outbreak for clustering levels 0, 0.25, 0.5, 0.75, and 1 over transmission probabilities from 0.40 ($\hat{R}_0 = 12.80$) to 0.55 ($\hat{R}_0 = 16.76$). Results over 1,000 stochastic simulations per combination of transmission probability and clustering level. Error bars indicate 95% confidence intervals, for scenarios where enough (at least 5 of each) persistent outbreaks and extinction cases occurred.



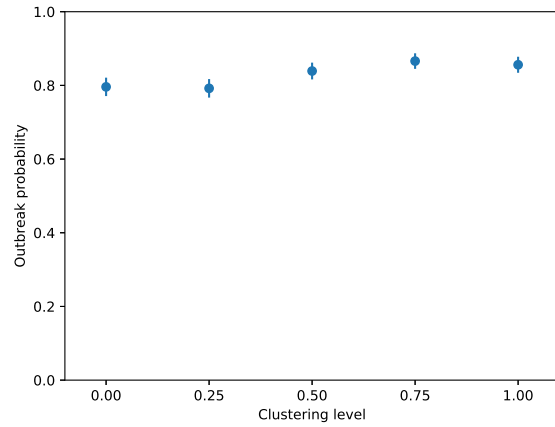
(a) Transmission probability = 0.60 ($\hat{R}_0 = 17.99$)



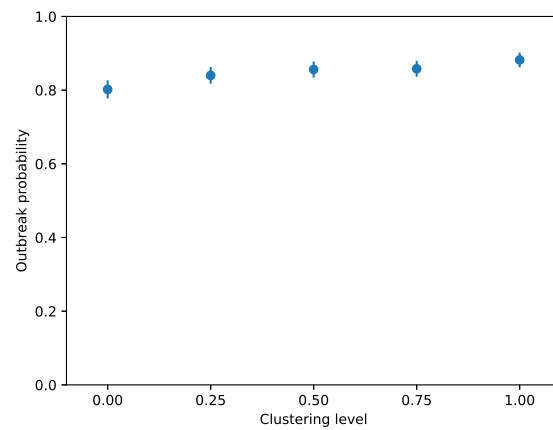
(b) Transmission probability = 0.65 ($\hat{R}_0 = 19.19$)



(c) Transmission probability = 0.70 ($\hat{R}_0 = 20.35$)

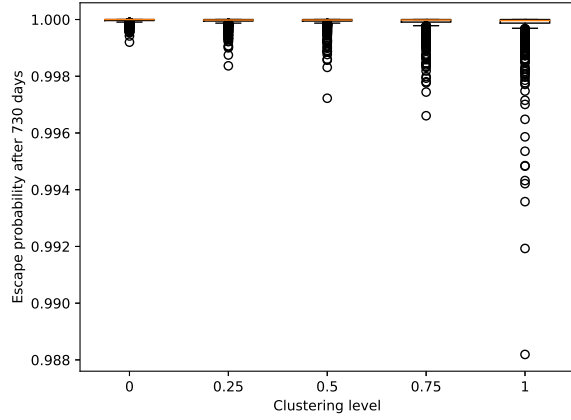


(d) Transmission probability = 0.75 ($\hat{R}_0 = 21.48$)

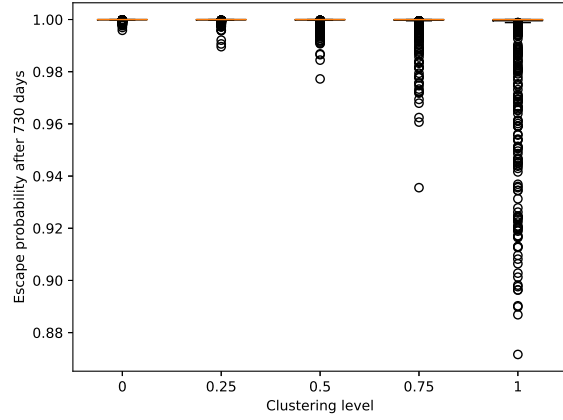


(e) Transmission probability = 0.80 ($\hat{R}_0 = 22.58$)

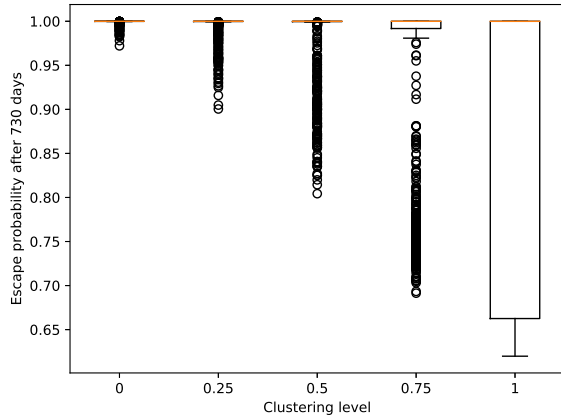
Supplementary Figure S7. Probability of the occurrence of a persistent outbreak for clustering levels 0, 0.25, 0.5, 0.75, and 1 over transmission probabilities from 0.60 ($\hat{R}_0 = 17.99$) to 0.80 ($\hat{R}_0 = 22.58$). Results over 1,000 stochastic simulations per combination of transmission probability and clustering level. Error bars indicate 95% confidence intervals, for scenarios where enough (at least 5 of each) persistent outbreaks and extinction cases occurred.



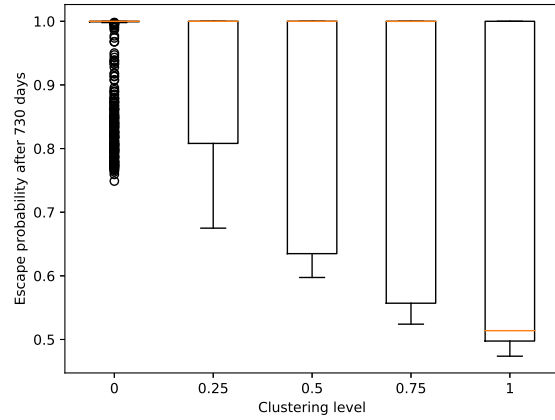
(a) Transmission probability = 0.20 ($\hat{R}_0 = 6.80$)



(b) Transmission probability = 0.25 ($\hat{R}_0 = 8.38$)

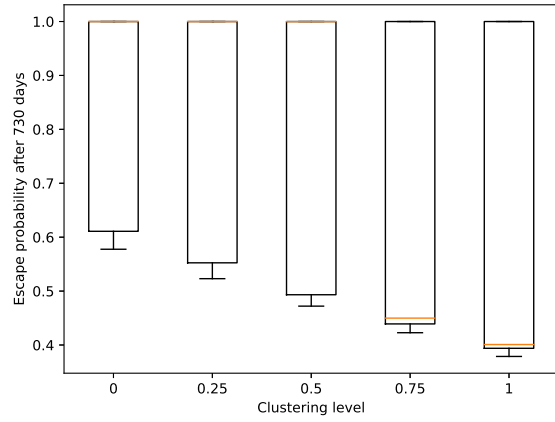


(c) Transmission probability = 0.30 ($\hat{R}_0 = 9.91$)

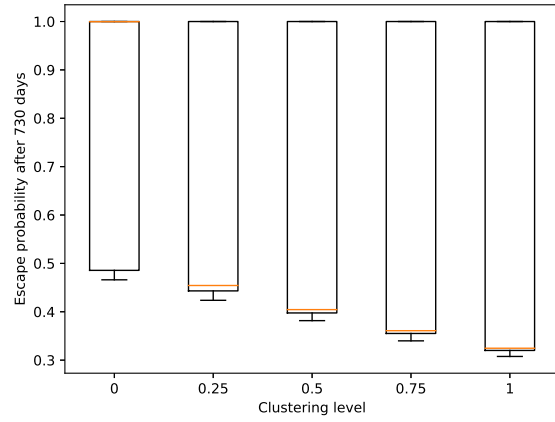


(d) Transmission probability = 0.35 ($\hat{R}_0 = 11.38$)

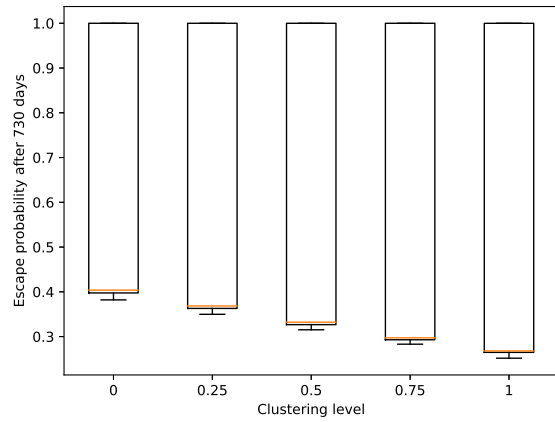
Supplementary Figure S8. Box-plots of escape probabilities for clustering levels 0, 0.25, 0.5, 0.75, and 1 over transmission probabilities from 0.20 ($\hat{R}_0 = 6.80$) to 0.35 ($\hat{R}_0 = 11.38$). Results over 1,000 stochastic simulations per combination of transmission probability and clustering level.



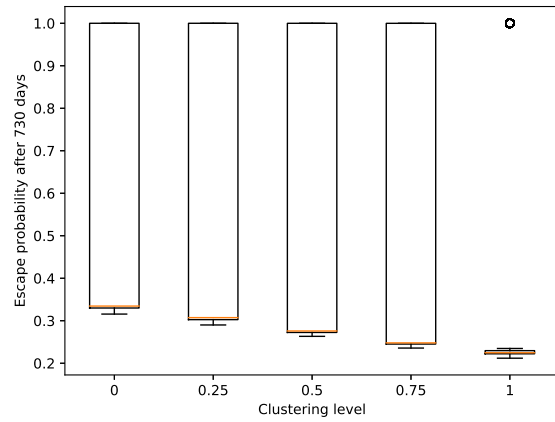
(a) Transmission probability = 0.40 ($\hat{R}_0 = 12.80$)



(b) Transmission probability = 0.45 ($\hat{R}_0 = 14.16$)

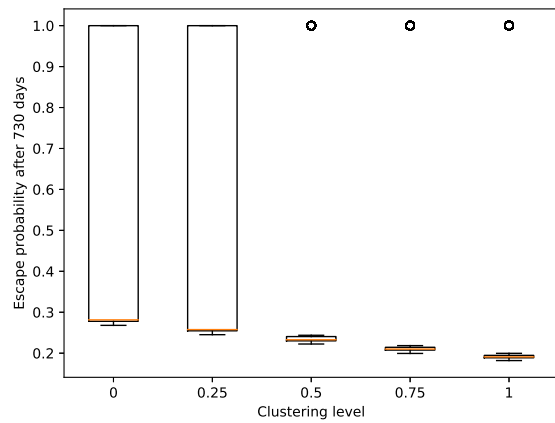


(c) Transmission probability = 0.50 ($\hat{R}_0 = 15.48$)

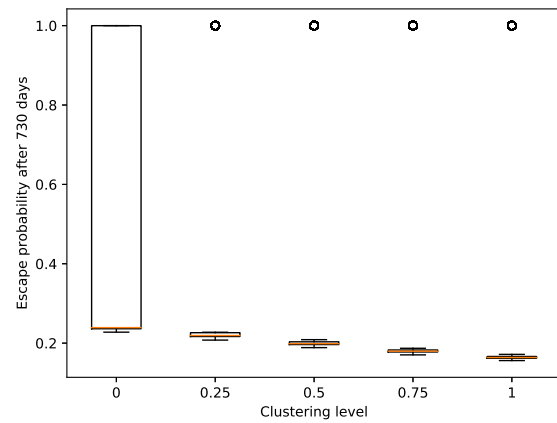


(d) Transmission probability = 0.55 ($\hat{R}_0 = 16.76$)

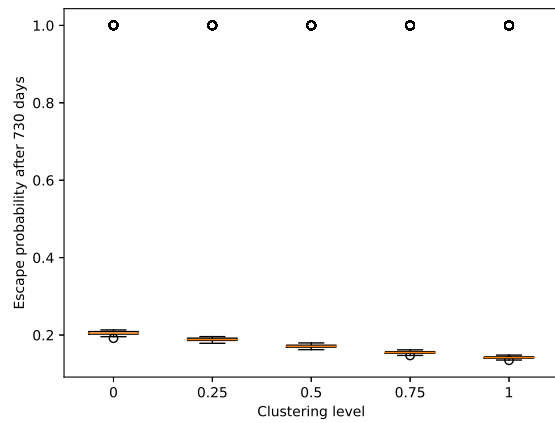
Supplementary Figure S9. Box-plots of escape probabilities for clustering levels 0, 0.25, 0.5, 0.75, and 1 over transmission probabilities from 0.40 ($\hat{R}_0 = 12.80$) to 0.55 ($\hat{R}_0 = 16.76$). Results over 1,000 stochastic simulations per combination of transmission probability and clustering level.



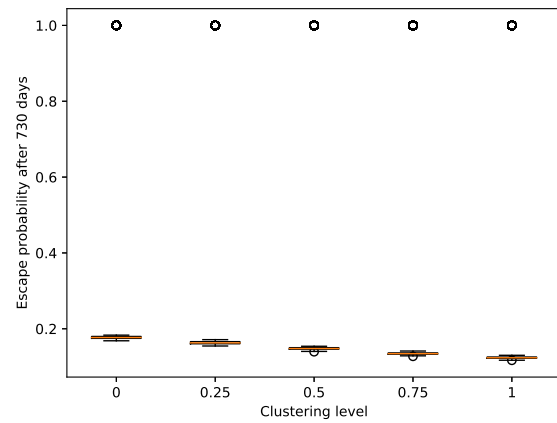
(a) Transmission probability = 0.60 ($\hat{R}_0 = 17.99$)



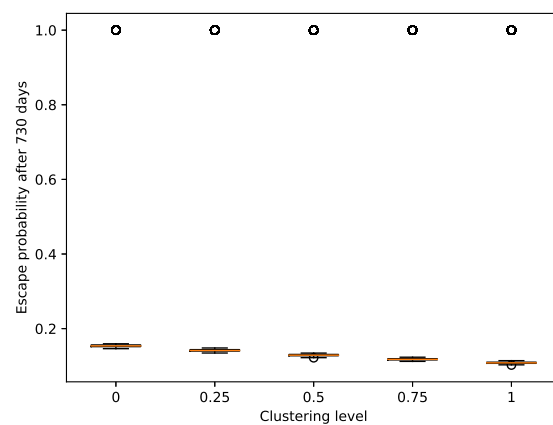
(b) Transmission probability = 0.65 ($\hat{R}_0 = 19.19$)



(c) Transmission probability = 0.70 ($\hat{R}_0 = 20.35$)

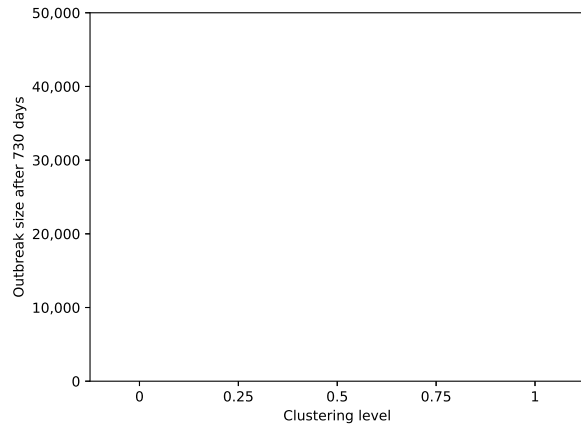


(d) Transmission probability = 0.75 ($\hat{R}_0 = 21.48$)

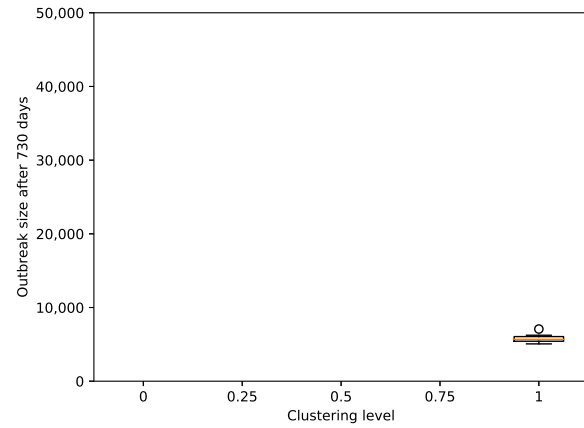


(e) Transmission probability = 0.80 ($\hat{R}_0 = 22.58$)

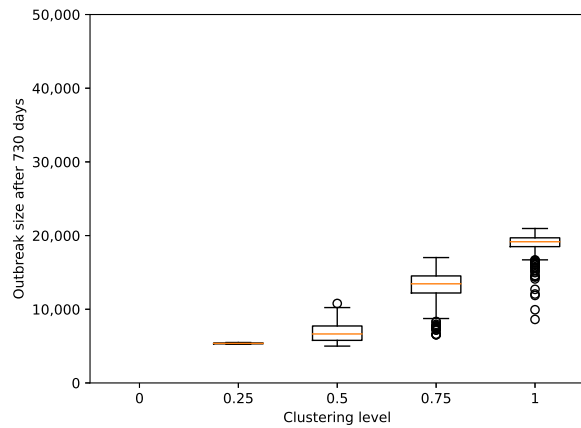
Supplementary Figure S10. Box-plots of escape probabilities for clustering levels 0, 0.25, 0.5, 0.75, and 1 over transmission probabilities from 0.60 ($\hat{R}_0 = 17.99$) to 0.80 ($\hat{R}_0 = 22.58$). Results over 1,000 stochastic simulations per combination of transmission probability and clustering level.



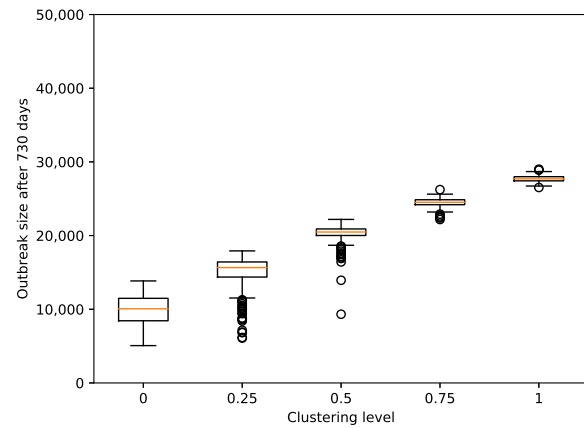
(a) Transmission probability = 0.20 ($\hat{R}_0 = 6.80$)



(b) Transmission probability = 0.25 ($\hat{R}_0 = 8.38$)

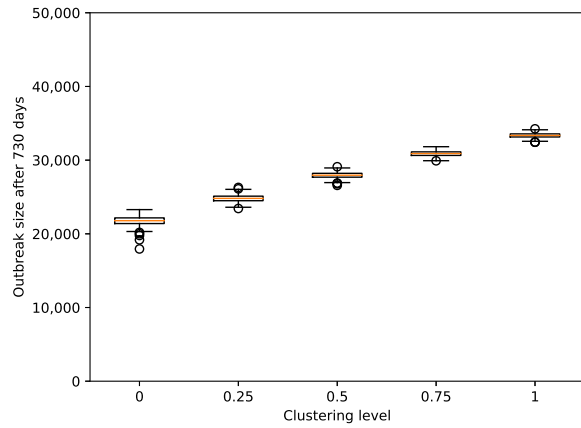


(c) Transmission probability = 0.30 ($\hat{R}_0 = 9.91$)

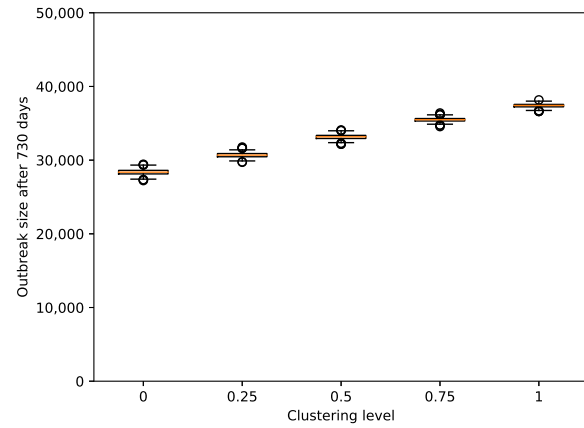


(d) Transmission probability = 0.35 ($\hat{R}_0 = 11.38$)

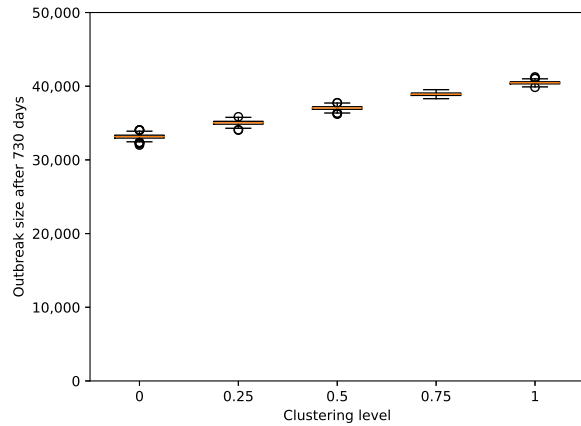
Supplementary Figure S11. Box-plots of outbreak sizes of persistent outbreaks (extinction threshold = 5,000 cases) for clustering levels 0, 0.25, 0.5, 0.75, and 1 over transmission probabilities from 0.20 ($\hat{R}_0 = 6.80$) to 0.35 ($\hat{R}_0 = 11.38$). Results over 1,000 stochastic simulations per combination of transmission probability and clustering level.



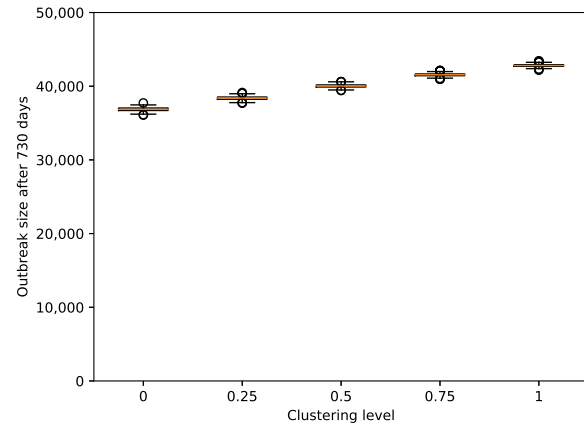
(a) Transmission probability = 0.40 ($\hat{R}_0 = 12.80$)



(b) Transmission probability = 0.45 ($\hat{R}_0 = 14.16$)

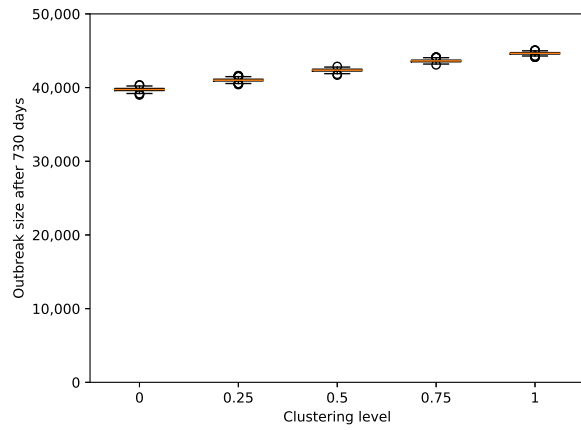


(c) Transmission probability = 0.50 ($\hat{R}_0 = 15.48$)

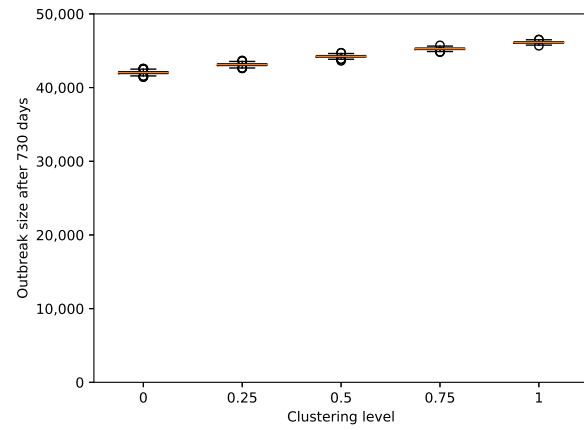


(d) Transmission probability = 0.55 ($\hat{R}_0 = 16.76$)

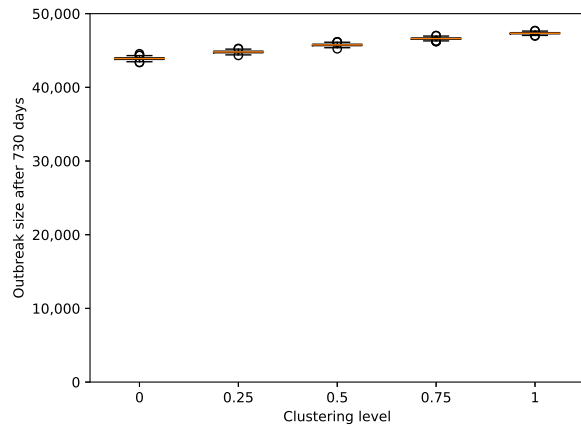
Supplementary Figure S12. Box-plots of outbreak sizes of persistent outbreaks (extinction threshold = 5,000 cases) for clustering levels 0, 0.25, 0.5, 0.75, and 1 over transmission probabilities from 0.40 ($\hat{R}_0 = 12.80$) to 0.55 ($\hat{R}_0 = 16.76$). Results over 1,000 stochastic simulations per combination of transmission probability and clustering level.



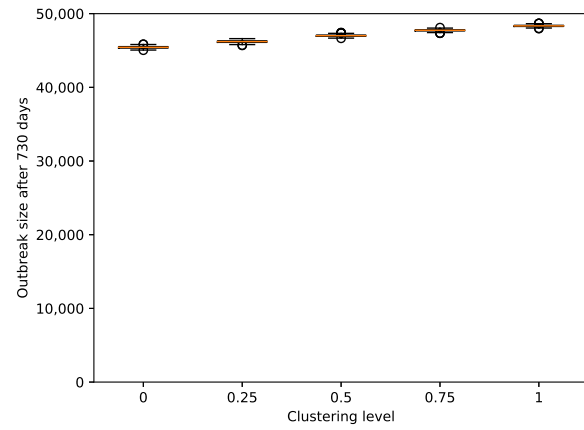
(a) Transmission probability = 0.60 ($\hat{R}_0 = 17.99$)



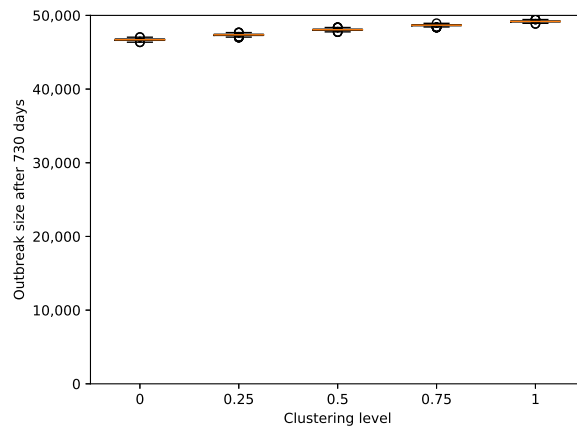
(b) Transmission probability = 0.65 ($\hat{R}_0 = 19.19$)



(c) Transmission probability = 0.70 ($\hat{R}_0 = 20.35$)

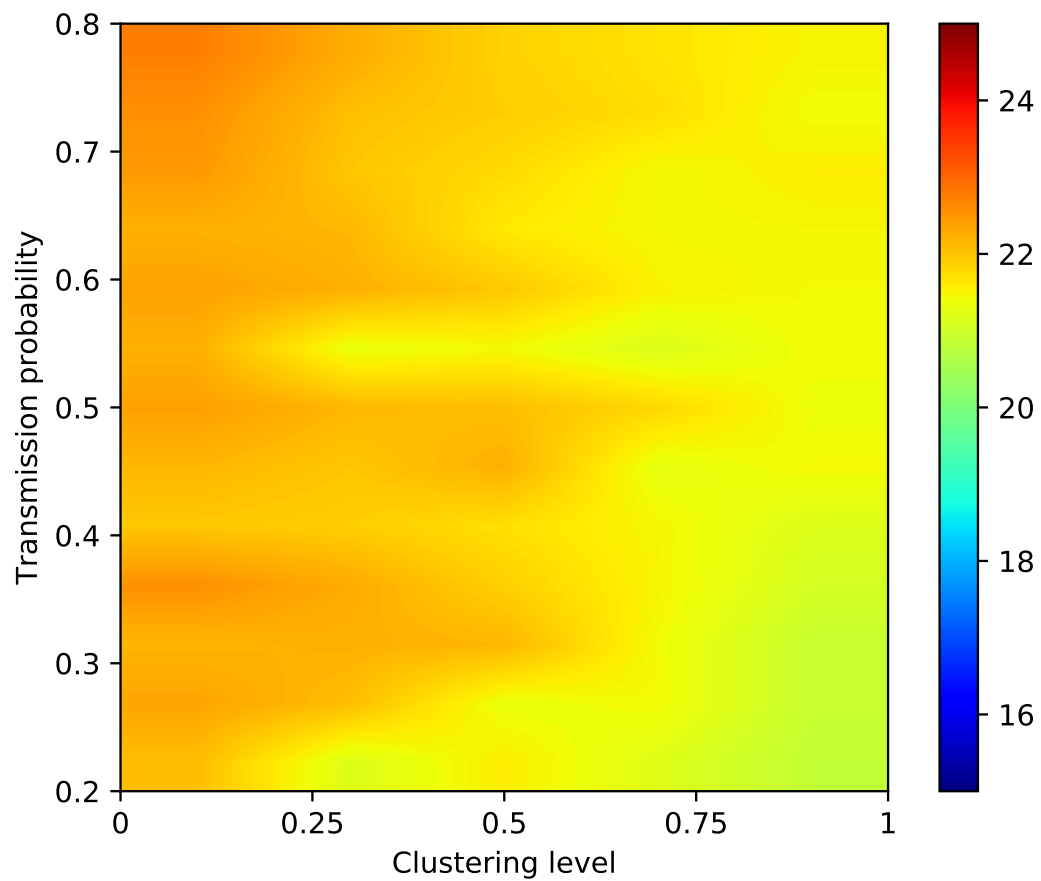


(d) Transmission probability = 0.75 ($\hat{R}_0 = 21.48$)



(e) Transmission probability = 0.80 ($\hat{R}_0 = 22.58$)

Supplementary Figure S13. Box-plots of outbreak sizes of persistent outbreaks (extinction threshold = 5,000 cases) for clustering levels 0, 0.25, 0.5, 0.75, and 1 over transmission probabilities from 0.60 ($\hat{R}_0 = 17.99$) to 0.80 ($\hat{R}_0 = 22.58$). Results over 1,000 stochastic simulations per combination of transmission probability and clustering level.



Supplementary Figure S14. Average ages of infected individuals for clustering levels 0 to 1 and transmission probabilities 0.2 to 0.8 ($R_0 \sim 6.80$ to 22.58). We ran 1,000 simulations for each scenario and calculated the average age over all infected individuals.