

**Table S1.** The top 15 nodes with the highest values of betweenness centrality in male and female GGMs.

Males			Females		
Vairable	Description	Betweenness centrallity	Variable	Description	Betweenness centrality
Platelet	Blood platelet count	283.00	Platelet	Blood platelet count	39.42
TG	Blood triglycerides	255.50	Fat	Total body fat	34.17
Chol	Blood total cholesterol	252.50	WBC	White blood cell count	30.00
BloodPreS	Systolic blood pressure	241.00	TG	Blood triglycerides	29.72
FSG	Fasting blood sugar	240.00	HB	Blood hemoglobin	25.58
Fat	Total body fat mass	210.27	UAC	Blood uric acid concentration	19.14
MPV	Mean platelet volume	175.00	BloodPreS	Systolic blood pressure	17.90
RDW	Red blood cell distribution width	156.00	FatPerc	Body fat percentage	17.54
WBC	White blood cell count	87.00	MCH	Mean corpuscular hemoglobin	16.42
Neut	Neutrophil count	60.00	BMI	Body mass index	14.38
MCH	Mean corpuscular hemoglobin	54.50	WaistCircum	Waist circumference	12.83
MCHC	Mean corpuscular hemoglobin concentration	54.50	Height	Body height	10.11
UAC	Blood uric acid concentration	31.00	Chol	Blood total cholesterol	9.59
Weight	Body weight	1.98	NeckCircum	Neck circumference	8.35

**Table S2.** All communities identified by the Minimal Forest and a short description of their variables.

Community	Q	Description	Q	Description	Q	Description
1	HB	Blood Hemoglobin	MPV	Mean Platelet Volume	Platelet	Blood Platelet Count
	Hct	Hematocrit	Mxd	Blood mixed lymphocyte count	RBC	Blood Red Blood Cell Count
	MCH	Mean Corpuscular Hemoglobin	Lymph	Blood Lymphocyte Count	RDW	Red Blood Cell Distribution Width
	MCHC	Mean Corpuscular Hemoglobin Concentration	Neut	Blood Neutrophil Count	WBC	Blood White Blood Cell Count
	MCV	Mean Corpuscular Volume	PDW	Platelet Distribution Width		
2	180	Frequency of brushing teeth	183	Number of artificial teeth	186	Dental health
	181	Frequency of dental floss	184	Number of teeth pulled out		
	182	do you have full dentures	185	Number of filled teeth		
3	BMI	Body-Mass Index	6	Education	241	Time spent on chat apps
	Fat	Body Fat	11	Range of body mass index (BMI)	253	Smoker?
	HipCircum	Hip Circumference	225	Number of glasses of water per day	WaistCircum	Waist Circumference
	MetaP	Resting Metabolic Rate	230	Which supplements in the past month?	Weight	
	NeckCircum	Neck Circumference	233	Use of module		

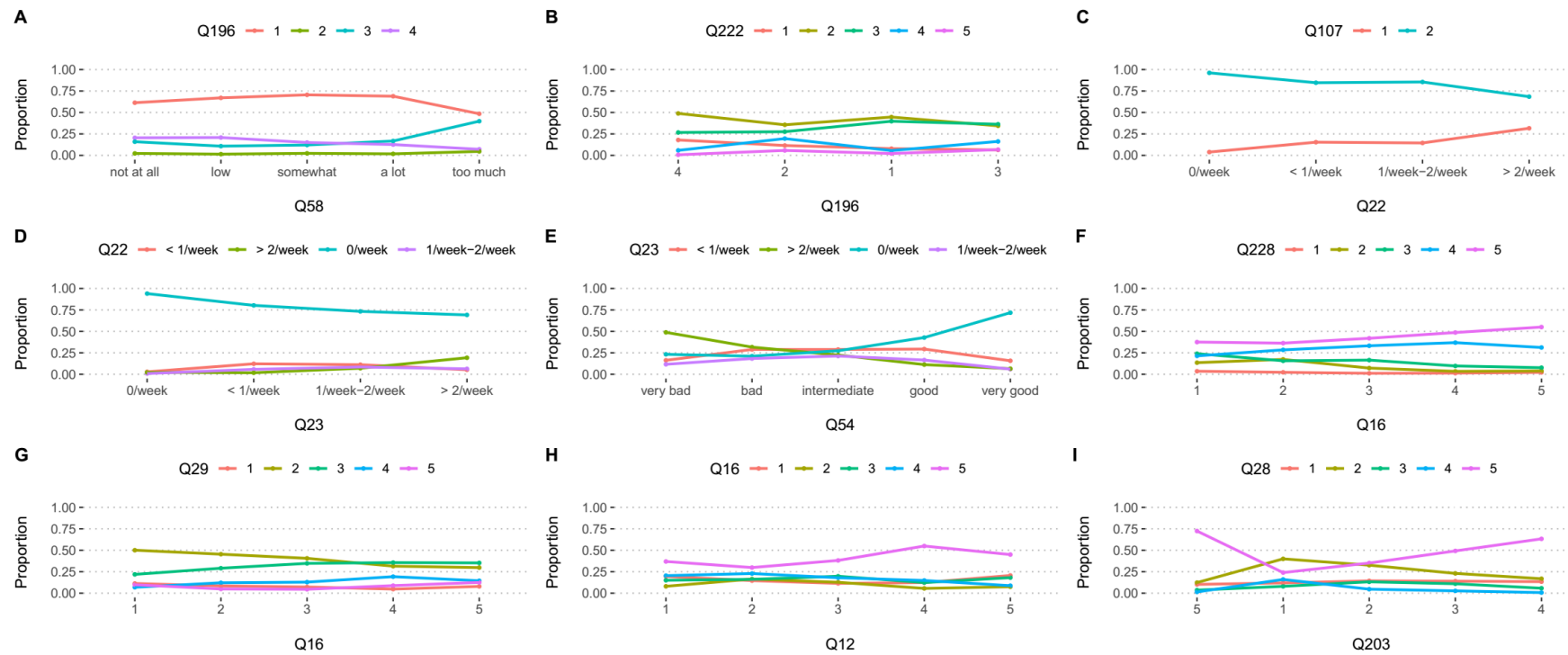
				spoon to add salt		
				Time spent on internet		
4	2	Gender	240			
	34	Notice mouth is dry	42	Feel don't have something to be waiting for	51	Notice unusual heart activity without physical activity
	35	Think you can't feel good experience	43	Feel distressed	52	Fear with no reason
	36	Have trouble breathing	45	Feeling heart dead and heart broken	53	Feel life is meaningless
	37	Difficult to volunteer for work	47	Fear at any moment	98	Asthma
	39	Feel tremor in body	48	Not able to show enthusiasm	101	Family history of asthma
5	41	Worried about panic or stupidity	49	Not feeling valuable		
	33	Difficulty in staying calm	40	Feel use of a lot of mental energy	46	Can't keep patience
	38	Wild reactions to situations	44	Calmness is difficult	50	Very irritable and sensitive
6	Chol	Blood cholesterol	HDL	Blood high-density lipoproteins	UAC	Blood uric acid concentration
	Crea	Blood creatinine	LDL	Blood low-density lipoproteins		
	FatPerc	Body fat percentage	TG	Blood triglycerides		

7	20	Sleep duration throughout a day	26	Have nightmares	196	Fastening Seatbelt
	21	Time to falling asleep	32	Number of close friends	212	Method of cooking fish
	22	Consumption of painkillers and tranquilizers	54	Self-assessment of health	213	Candy consumption
	23	Frequency of not falling asleep in 30 minutes	58	Self-assessment of energy levels	217	Type of cooking
	24	Wake up at night to go to toilet	107	Depression	221	
	25	Wake up at night or early morning	110	Family history of depression	222	Fruit consumption
	229	Type of dairy product	232	Put salt on the table		
8	12	Frequency of vigorous Physical activity	29	Time spent with family and friends	224	Removal of chicken skin before cooking
	14	Frequency of moderate PA	30	Time spoke to family and friends on phone	226	Number of glasses of milk per week
	16	Frequency of low PA	207	Frequency of eating breakfast	227	Number of cups of yogurt per week
	17	Duration of low PA sessions	223	Removal of fat from meat before cooking	228	Number of cheese meals per week
9	27	How many hours of TV	203	Hamburgers, hot dogs	211	Frequency of eating beans
	28	How many hours of	204	French fries, samosa, falafel	216	Dental health

10		movies and satellite				
	197	What do you drink with food	205	Olivier salad	218	Frequency of eating muffins and cakes
	198	Frequency of drinking carbonated drinks	206	Canned food	219	Frequency of eating snacks
	199	Frequency of drinking sweetened drinks	208	Frequency of eating eggs	220	Frequency of eating vegetables
	201	Main reason for buying fast food	209	Frequency of eating meat		
	202	Amount spent on fast food	210	Frequency of eating chicken		
	55	Limitation in physical activity due to physical problem	78	Nocturnal snoring problem	174	Number of days hospitalized throughout life
	56	Limitation in work due to physical problem	166	History of gallbladder surgery	177	Number of visits to a general practitioner during the past year
	57	Amount of body pain in last month	170	History of neck pain in past month	178	Number of visits to a specialist during the past year
	59	Restriction of social relationships by mental and physical problems	171	History of back pain in past month	179	The first healthcare provider visited upon feeling unwell

11	60	Amount of hurt by mental problems	172	History of knee pain in past month	
	61	Restriction of daily activities by physical and mental problems	173	History of gout	
	FSG	Fasting Serum Glucose	70	Family history of heart disease	125
	Height	Height	79	Family history of sudden death	158
	MusclePerc	Muscle Percentage	80	Diabetes	214
	Pulse	Pulse rate	88	Family history of diabetes	215
	1	Age	89	Blood cholesterol increased	234
	3	Duration of current residence	92	Family history of increased blood cholesterol	237
	4	Native of Yazd	93	Blood coagulation problems	238
	7	Number of household members	97	Family history of blood coagulation problems	239
	8	Marital status	115	Osteoporosis	242
	18	Time of going to bed	120	Family history of osteoporosis	

	19	Time of waking up	121	Arthritis		
12	BloodPreD	Diastolic blood pressure	10	Range of diastolic blood pressure	160	Kidney stone surgery
	BloodPreS	Systolic blood pressure	62	Heart disease?	168	Open heart surgery
	9	Range of systolic blood pressure	71	HTN?	126	Skin cancer
13	102	Thyroid problems	137	Family history of lung cancer	145	Family history of stomach cancer
	106	Family history of thyroid problems	141	Family history of colon cancer		
14	75	History of mental illness?	114	Family history of Alzheimer's	149	Family history of colorectal cancer
	111	Alzheimer's disease?	142	Stomach cancer		



**Figure S1. Further analysis of MF connections.** In each plot, two variables that are directly connected in the MF are demonstrated. The variables demonstrated here are the responses to various questions in the questionnaire and are, therefore, categorical variables. We refer to each of the options in a multi choice question as the levels for the responses to that question. For the meaning of each question and their levels, please see the YaHS questionnaire. For each level of the variable on the x-axis, the proportion of individuals belonging to the various levels of the other variable are calculated. For example in **A**, at level “not at all” of Q58 (subjective feeling of energy levels), the proportion of individuals belonging to levels 1-4 of Q196 (fastening seatbelts) are plotted as points. The levels of the variable on the x-axis are ordered to have a clear increasing or decreasing trend. As a result, the trend for each level of the variable on the y-axis could be seen throughout changes in the x-axis. For example in **A**, The proportion of people who fasten their seatbelts in their personal cars (level 3 of Q196) increases alongside the increasing subjective physical energy levels. **(A-E)** Community 7 aggregates [higher] usage of seatbelts (Q196), [more] daily fruit intake (Q222), [less] diagnosed depression (Q107), and [better] sleep (Qs 22 and 23) with subjective feelings of [More] energy (Q58) and [intermediate to very good] self-assessment of health (Q54). **(F-H)** Healthy eating habits such as [higher] consumption of dairy products (Q228), [more] physical activity (Qs 12 and 16), and [more] time spent with friends and family (Q29) are gathered into community 8. **(I)** unhealthy habits of eating [more] fast foods (Q203) is clustered alongside watching [more] television and movies (Q28) in community 9.

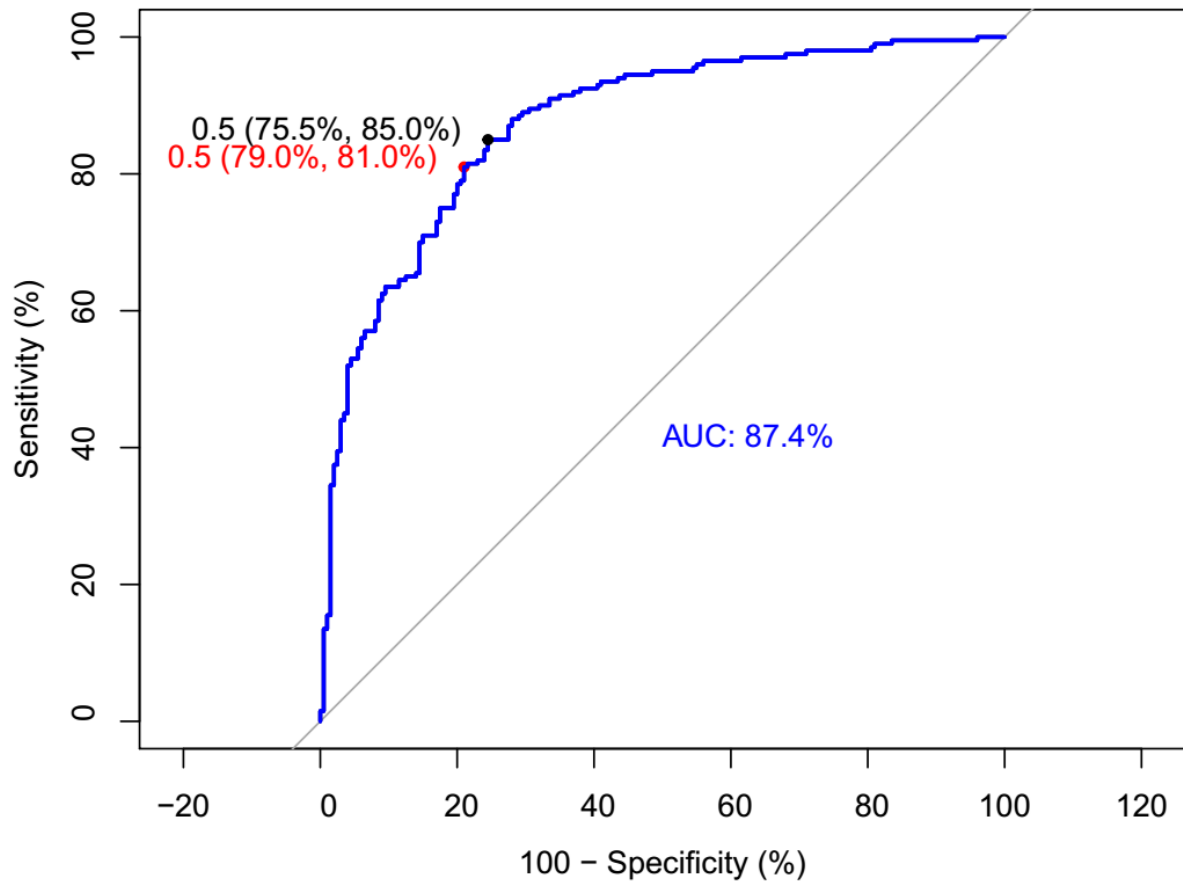


**Table S3.** Comparison of the continuous variables identified through VVKL analysis between the upward- and downward-deviating groups when predicting HDL levels based on total cholesterol (Chol) using Student's t-test in males and females.

Males						Females					
VVKL		Student's t-test				VVKL		Student's t-test			
Variable	KL	Variable	Statistic	p-value	Cohen's D	Variable	KL	Variable	Statistic	p-value	Cohen's D
TG	1.397	TG	6.630	0.000	-1.049	TG	0.864	TG	8.879	0.000	-1.31
Fat	0.561	Fat	5.779	0.000	-0.917	NeckCircum	0.474	NeckCircum	5.959	0.000	-0.88
NeckCircum	0.534	WaistCircum	5.502	0.000	-0.873	UAC	0.469	UAC	5.850	0.000	-0.86
MetaP	0.499	BMI	5.297	0.000	-0.841	MetaP	0.276	MetaP	4.057	0.000	-0.60
BMI	0.488	Weight	4.991	0.000	-0.792	Fat	0.253	LDL	3.169	0.002	-0.47
Weight	0.446	NeckCircum	4.936	0.000	-0.784	RDW	0.244	Crea	3.021	0.003	-0.45
WaistCircum	0.423	MetaP	4.855	0.000	-0.771	BloodPreS	0.204	Fat	2.922	0.004	-0.43
FatPerc	0.385	UAC	4.776	0.000	-0.757	Weight	0.180	BloodPreS	2.785	0.006	-0.41
HipCircum	0.319	HipCircum	4.308	0.000	-0.684	MCHC	0.162	Weight	2.707	0.007	-0.40
Crea	0.313	Crea	4.263	0.000	-0.674	WaistCircum	0.142	BMI	2.695	0.008	-0.40
RDW	0.280	MusclePerc	-3.512	0.001	0.558	Hct	0.134	WaistCircum	2.329	0.021	-0.34
UAC	0.276	FatPerc	3.233	0.002	-0.514	Crea	0.130	RDW	2.020	0.045	-0.30
LDL	0.244	Mxd	2.627	0.009	-0.417	RBC	0.120	PDW	-1.812	0.072	0.27
Pulse	0.227	BloodPreS	2.491	0.014	-0.395	WBC	0.115	MPV	1.444	0.150	-0.21
Chol	0.180	RDW	2.074	0.040	-0.329	BMI	0.108	FSG	1.404	0.162	-0.21
MusclePerc	0.146	BloodPreD	1.960	0.052	-0.311	LDL	0.107	MCHC	1.272	0.205	-0.19
Neut	0.143	RBC	1.851	0.066	-0.294	HB	0.102	RBC	1.121	0.264	-0.17
Height	0.138	Pulse	1.608	0.110	-0.255	MusclePerc	0.100	HB	1.027	0.306	-0.15
MCHC	0.137	HB	1.437	0.153	-0.228	Height	0.098	BloodPreD	1.009	0.315	-0.15
FSG	0.135	Hct	1.315	0.191	-0.209	BloodPreD	0.092	Mxd	-0.949	0.344	0.14

**Table S4.** Comparison of the categorical variables identified through VVKL analysis between the upward- and downward-deviating groups when predicting HDL levels based on total cholesterol (Chol) using the  $\chi^2$  test in males and females.

Males							Females						
VVKL		X <sup>2</sup> -test					VVKL		X <sup>2</sup> -test				
Variable	KL	Variable	Statistic	p-value	Cramer's V	dfs	Variable	KL	Variable	Statistic	p-value	Cramer's V	dfs
Q11	0.536	Q11	40.490	0.000	0.505	4	Q60	0.166	Q19	12.874	0.005	0.265	3
Q9	0.169	Q208	12.604	0.013	0.282	4	Q202	0.127	Q60	12.355	0.015	0.260	4
Q208	0.163	Q58	11.810	0.019	0.273	4	Q19	0.120	Q225	11.061	0.026	0.246	4
Q10	0.162	Q9	11.440	0.010	0.268	3	Q225	0.120	Q202	10.769	0.029	0.243	4
Q211	0.145	Q10	11.033	0.026	0.263	4	Q197	0.114	Q32	10.121	0.038	0.235	4
Q58	0.136	Q211	11.010	0.026	0.263	4	Q201	0.113	Q205	9.904	0.042	0.233	4
Q216	0.133	Q216	10.623	0.031	0.259	4	Q224	0.111	Q201	9.797	0.044	0.231	4
Q215	0.130	Q61	9.282	0.026	0.242	3	Q199	0.103	Q6	9.733	0.045	0.231	4
Q42	0.123	Q42	8.634	0.035	0.233	3	Q6	0.101	Q203	9.045	0.060	0.222	4
Q21	0.119	Q50	8.591	0.035	0.233	3	Q205	0.097	Q56	9.010	0.061	0.222	4
Q50	0.106	Q21	8.454	0.076	0.231	4	Q208	0.097	Q199	8.716	0.069	0.218	4
Q229	0.101	Q215	8.348	0.080	0.229	4	Q203	0.095	Q9	8.561	0.073	0.216	4
Q1	0.098	Q189	8.319	0.081	0.229	4	Q177	0.091	Q224	8.168	0.086	0.211	4
Q61	0.096	Q229	7.870	0.096	0.223	4	Q32	0.089	Q58	8.095	0.088	0.210	4
Q198	0.096	Q22	7.837	0.049	0.222	3	Q50	0.088	Q177	7.863	0.097	0.207	4
Q55	0.092	Q239	7.823	0.098	0.222	4	Q56	0.083	Q208	7.606	0.107	0.204	4
Q29	0.087	Q55	7.734	0.102	0.221	4	Q223	0.083	Q50	7.431	0.059	0.202	3
Q239	0.087	Q56	7.112	0.068	0.212	3	Q217	0.082	Q49	7.181	0.066	0.198	3
Q8	0.085	Q60	7.063	0.133	0.211	4	Q47	0.080	Q183	7.045	0.134	0.196	4
Q12	0.083	Q230	7.035	0.134	0.210	4	Q49	0.078	Q47	6.970	0.073	0.195	3



**Figure S2.** The receiver-operating curve for the osteoporosis-prediction model built by the EN. The optimal combinations of sensitivity and specificity are determined by both the Youden (black) and closest-to-top-left (red) methods. The area under the curve (AUC) for this model is 87.4%.

**Table S5.** Predictors for osteoporosis identified by the EN algorithm.

Predictor	Description	The observed correlation	Previous mentions in medical literature
HB	(Blood Hemoglobin)	Negative	(1)
RBC	(Blood Red Blood Cell Count)	Negative	(2, 3)
WaistCircum	Waist Circumference	Positive	(4)
MusclePerc	(Muscle Percentage)	Negative	(5, 6)
FatPerc	(Fat Percentage)	Positive	(7)
BloodPreS	Systolic Blood Pressure	Positive	(8)
MetaP	Resting Metabolic Rate	Negative	(9, 10)
Height	Height	Negative	(11)

**Table S6.** Predictors for resting metabolic rate as identified by the Elastic Net algorithm.

Predictor	Description	The observed pattern	Previous mentions in medical literature
<b>MusclePerc</b>	Muscle Percentage	Positive	(12)
<b>RBC</b>	Blood Red Blood Cell Count	Positive	*
<b>BMI</b>	Body Mass Index	Positive	(13)
<b>HB</b>	Blood Hemoglobin	Positive	*
<b>UAC</b>	Blood Uric Acid Concentration	Positive	*
<b>Fat</b>	Body Fat	Positive	(14)
<b>NeckCircum</b>	Neck Circumference	Positive	*
<b>Height</b>	Nocturnal snoring problems - Pain in knee joint	Positive	(14)
<b>Weight</b>	Frequency of sleeping pills - Candy consumption	Positive	(14)

\* These factors have not been directly associated with resting metabolic rate in the literature. However, they may be related to other well known predictors such as gender.

## References

1. Y. H. Oh, J. H. Moon, B. Cho, Association between Hemoglobin Level and Bone Mineral Density in Korean Adults. *J Bone Metab* **24**, 161-173 (2017).
2. H.-L. Kim *et al.*, The positive association between peripheral blood cell counts and bone mineral density in postmenopausal women. *Yonsei Med J* **52**, 739-745 (2011).
3. R. J. Valderrábano *et al.*, Bone Density Loss Is Associated With Blood Cell Counts. *J Bone Miner Res* **32**, 212-220 (2017).
4. L.-H. Cui *et al.*, Sex-related differences in the association between waist circumference and bone mineral density in a Korean population. *BMC Musculoskelet Disord* **15**, 326-326 (2014).
5. H.-Y. Jang *et al.*, The Association between Muscle Mass Deficits Estimated from Bioelectrical Impedance Analysis and Lumbar Spine Bone Mineral Density in Korean Adults. *J Bone Metab* **23**, 95-100 (2016).
6. M. Papageorgiou, T. Sathyapalan, R. Schutte, Muscle mass measures and incident osteoporosis in a large cohort of postmenopausal women. *J Cachexia Sarcopenia Muscle* **10**, 131-139 (2019).
7. Y.-Y. Chen *et al.*, Body fat has stronger associations with bone mass density than body mass index in metabolically healthy obesity. *PLoS One* **13**, e0206812-e0206812 (2018).
8. S. Yazici *et al.*, Relationship between blood pressure levels and bone mineral density in postmenopausal Turkish women. *Arch Med Sci* **7**, 264-270 (2011).
9. W.-H. Hsu, C.-H. Fan, Z.-R. Lin, R. W.-W. Hsu, Effect of basal metabolic rate on the bone mineral density in middle to old age women in Taiwan. *Maturitas* **76**, 70-74 (2013).
10. M. Ogata *et al.*, Association between basal metabolic function and bone metabolism in postmenopausal women with type 2 diabetes. *Nutrition* **31**, 1394-1401 (2015).
11. J. E. Compston *et al.*, Relationship of weight, height, and body mass index with fracture risk at different sites in postmenopausal women: the Global Longitudinal study of Osteoporosis in Women (GLOW). *J Bone Miner Res* **29**, 487-493 (2014).
12. A. M. Johnstone, S. D. Murison, J. S. Duncan, K. A. Rance, J. R. Speakman, Factors influencing variation in basal metabolic rate include fat-free mass, fat mass, age, and circulating thyroxine but not sex, circulating leptin, or triiodothyronine. *Am J Clin Nutr* **82**, 941-948 (2005).
13. T. ten Haaf, P. J. M. Weijs, Resting energy expenditure prediction in recreational athletes of 18-35 years: confirmation of Cunningham equation and an improved weight-based alternative. *PLoS One* **9**, e108460-e108460 (2014).
14. N. S. Sabounchi, H. Rahmandad, A. Ammerman, Best-fitting prediction equations for basal metabolic rate: informing obesity interventions in diverse populations. *Int J Obes (Lond)* **37**, 1364-1370 (2013).