

1 Online Data Supplement

2 *Table E1: British Thoracic Society Treatment steps ²⁶; shaded area represent the cohort of patients recruited for the study*

BTS Treatment Step		
1	Mild intermittent asthma	Inhaled short acting β_2 agonist as required (SABA)
2	Regular Preventer Therapy	SABA + <ul style="list-style-type: none"> Inhaled Corticosteroids (ICS) 200-400 μg
3	Initial add-on therapy	SABA+ <ul style="list-style-type: none"> Add in inhaled long acting β_2 agonist (LABA) Increase ICS up to 800μg Consider other therapies – Leukotriene receptor antagonists (LRA) and slow release theophylline
4	Persistent poor-control	SABA+LABA <ul style="list-style-type: none"> Increase ICS up to 2000μg

5

Continuous or frequent use SABA+LABA+2000µg ICS

of oral steroids

- Regular ICS to control symptoms

3

4

5

7

- Close physical contact with at-risk individuals (children under 5yrs, immunosuppressed adults)
- History of drug or alcohol abuse - drinking over the recommended alcohol intake limit (more than 14 units of alcohol per week).
- Current Smokers or ex-smoker with a significant smoking history (>10 pack years)
- Taking medications that may affect the immune system e.g. oral *steroids*, *steroid nasal spray*, antibiotics, and disease-modifying anti-rheumatoid drugs.
- Any acute illness – unexplained symptoms in the preceding 14 days.
- Having received any antibiotics, oral steroids or nasal steroid spray in the preceding 28 days
- More than 1 asthma exacerbation (as defined by ATS) in the last twelve months.
- Taking anticoagulants
- History of culture-proven pneumococcal disease
- Allergy to penicillin/amoxicillin
- Simultaneously involved in another clinical trial unless observational or in follow-up (non-interventional) phase.
- History of significant cardiorespiratory disease (excluding stable hypertension, and asthma at treatment step 2 and 3), or diseases associated with altered immunity, including diabetes, alcohol abuse, malignancy, rheumatological conditions
- Pregnancy
- Taking any medications except those on the “allowed list” (statins, anti-hypertensives, antidepressants, bisphosphonates, hormone replacement therapy, vitamin supplements, anti-acid medications, nicotine replacement therapy (NRT), inhaled steroids up to 800 micrograms BDP equivalent, inhaled beta 2 agonists, leukotriene receptor antagonist

8

9

10

11



<i>Timepoint</i>	<i>Pre-screen</i>	<i>-5</i>	<i>2</i>	<i>7</i>	<i>9</i>	<i>14</i>	<i>22*</i>	<i>29</i>
<i>Baseline investigation</i>	✓							
<i>Nasal wash</i>		✓	✓	✓	✓	✓	✓	✓
<i>Nasal cells</i>		✓	✓	✓	✓			✓
<i>FeNO</i>	✓			✓				

12

13 Figure E1: Study Overview: Study design showing timepoints for follow up visits. Participants
14 were pre-screened up to 14 days before screen; at baseline full history, including relevant
15 examination was done along with Spirometry, Peak Expiratory Flow Rate (PEFR), and baseline
16 blood samples. Nasal wash was obtained for pneumococcal detection and nasal cells for
17 immunophenotyping. *Only colonised participants. Fractional Exhaled Nitric Oxide (FeNO)

18

19

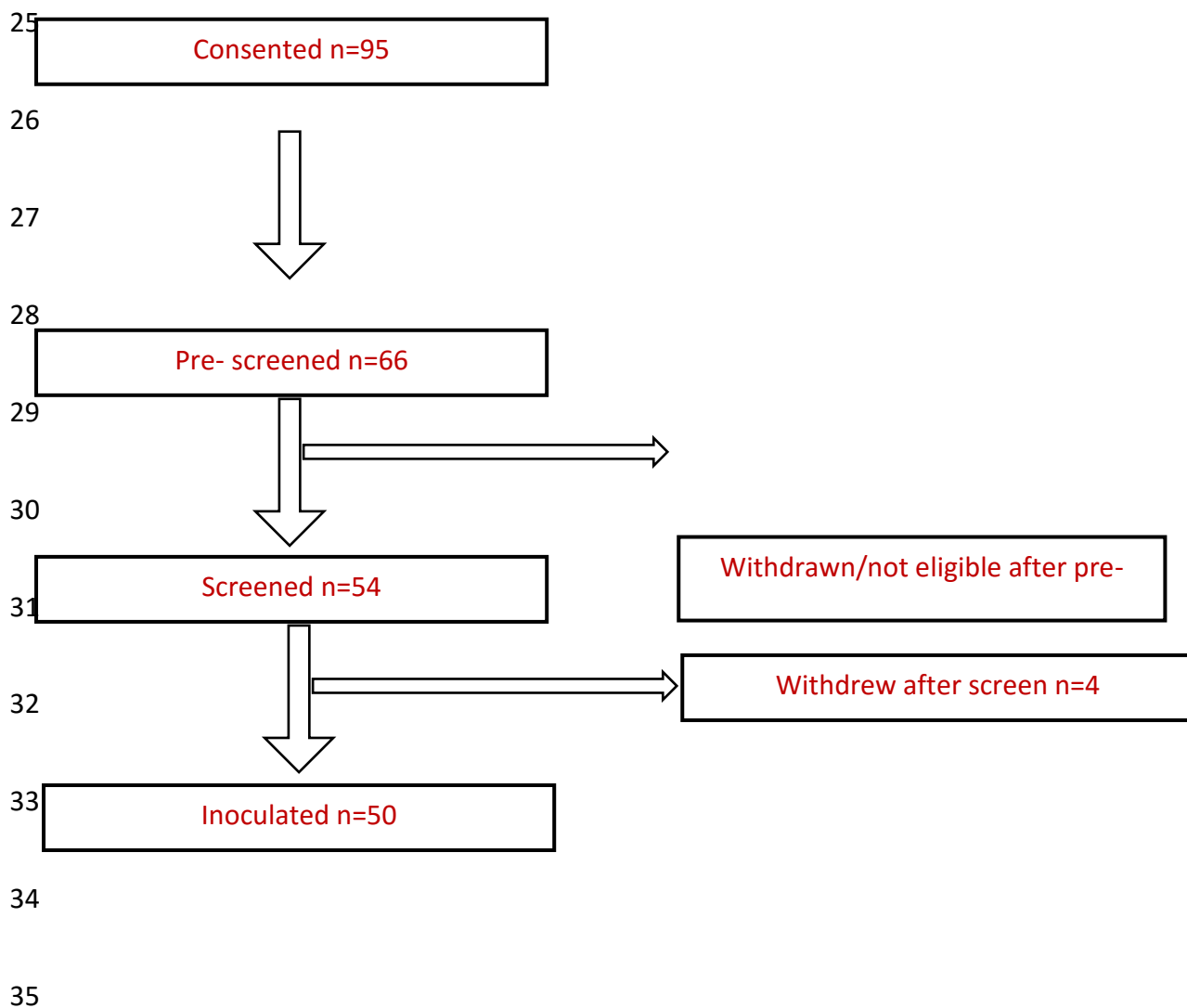
20

21

22

23

24



36 Figure E2: Recruitment: Flow chart showing recruitment and retention numbers. Reasons for
 37 withdrawal: Not on inhaled corticosteroids (ICS) n=17, unable to contact after consent n=5,
 38 medical placement n=2, ICS dose too high n=2, n=1 for each of the following: not using ICS as
 39 prescribed, moved out of the area, no reason stated, personal reasons, high white cell count,
 40 headaches daily, penicillin allergy, bronchiectasis, using non-invasive ventilation, withdrew
 41 consent, >3 exacerbations in the preceding 12 months, proven pneumococcal pneumonia.
 42 One participant was excluded after day 2 as they had low peak expiratory flow rate (PEFR)
 43 and had to increase ICS, thus exceeding the 800µg budesonide equivalent threshold.

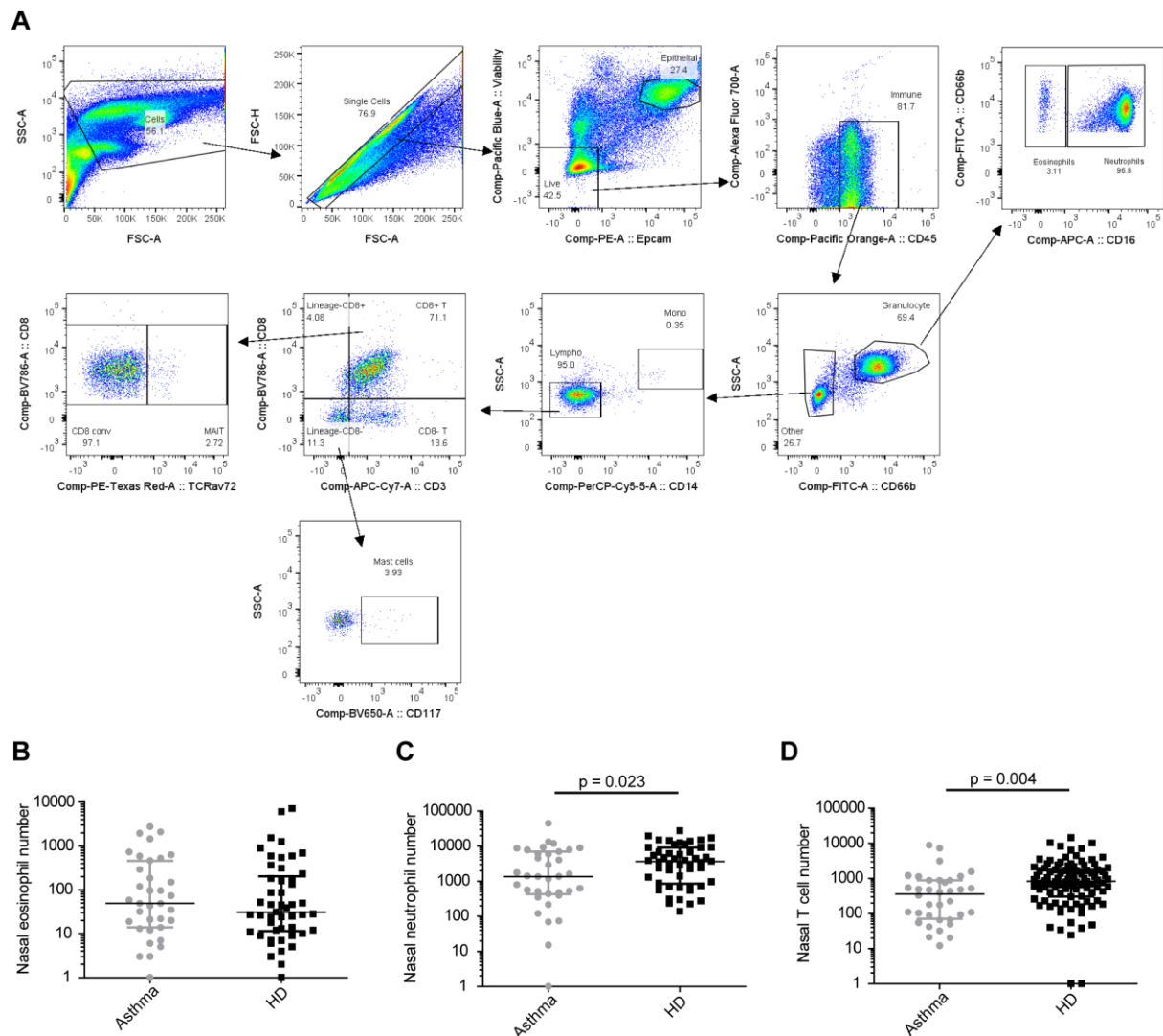
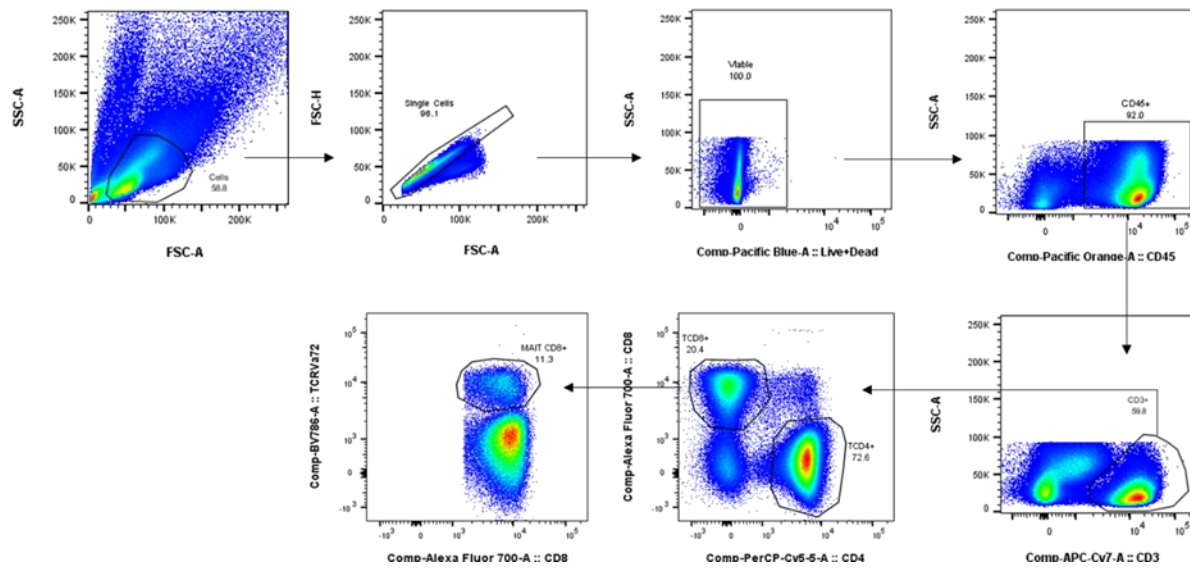


Figure E3: Nasal cell phenotyping. A) Flow cytometry gating strategy for nasal cells from one representative participant with asthma. Numbers of acquired B) eosinophils, C) neutrophils and D) T cells from the nose at baseline for asthmatic (grey) and healthy (black) donors. Median and interquartile ranges are depicted, as well as results from student t-test on log-transformed data.



52

53 Figure E4: Blood MAIT cell phenotyping. Flow cytometry gating strategy for blood cells from
 54 one representative participant with asthma.

55

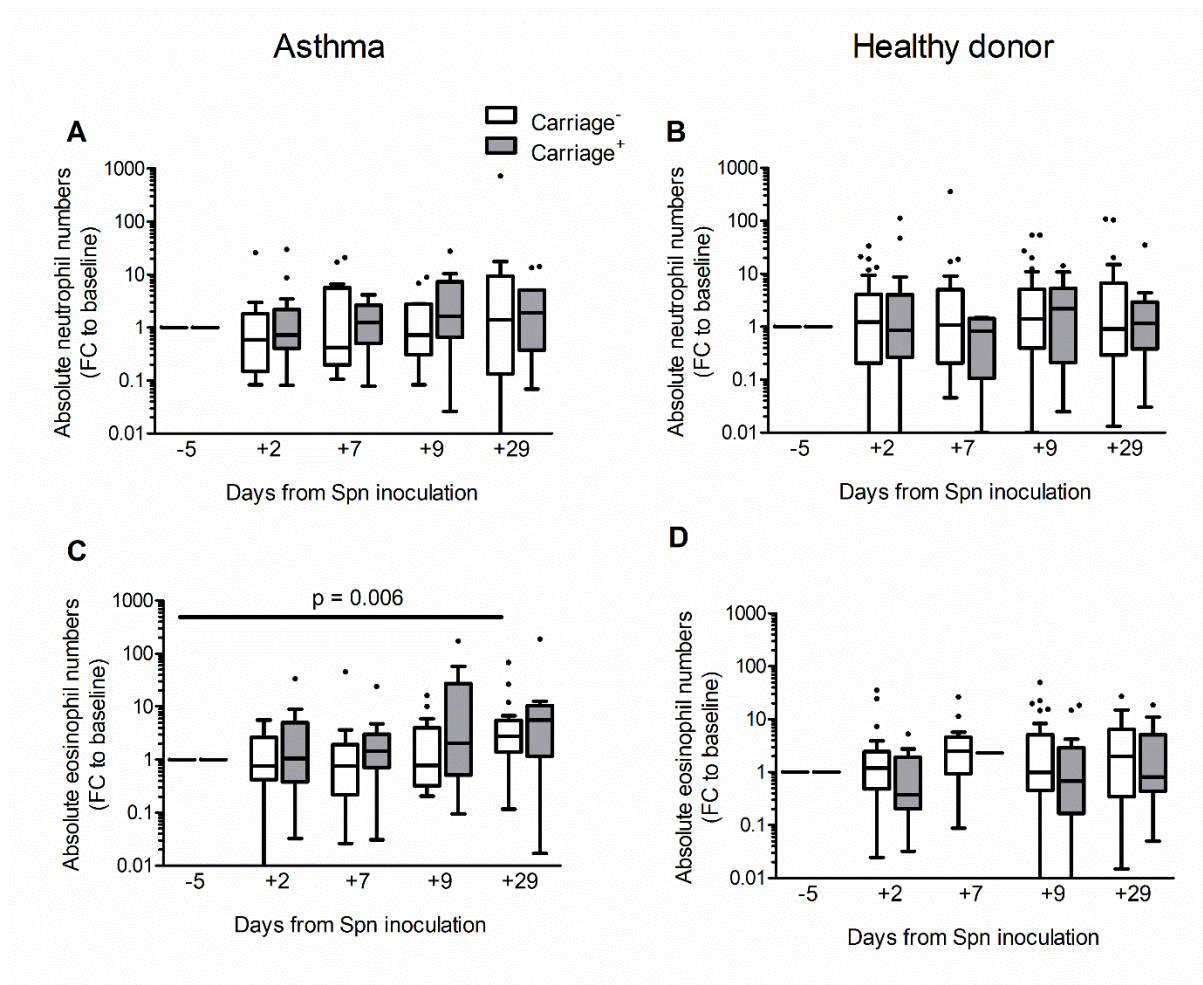


Figure E5. Nasal neutrophil and eosinophil numbers. Baseline-normalized numbers of neutrophils in A) asthma and B) healthy control. Baseline-normalized numbers of eosinophils in C) asthma and D) healthy control. Tukey boxplots are presented as well as results from paired-Wilcoxon rank tests compared to baseline levels (comparing the change from baseline to the days 7, 9, and 29 as shown); FC= Fold Change, Spn = *S. pneumoniae*.