

Supplementary Information

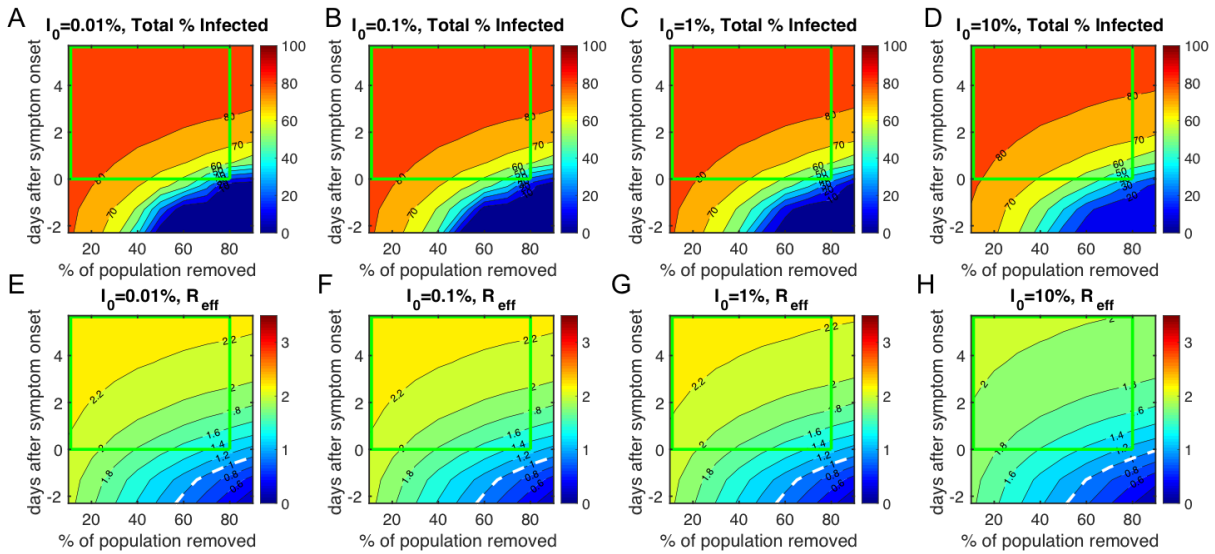


Figure S1: Effect of initial infections on the total percent of the population infected and the effective reproductive number. A-D. Projected total percent infected under transmission mitigation of 50%, 75%, 100%, and 150%, representing initial percent infected (I_0) of 0.01%, 0.1%, 1% and 10% for combinations of the percent of infectious individuals able to be isolated and the timeliness of isolation. Green box outlines the feasible region of parameter space under symptomatic isolation. E-H. Effective reproductive number (R_{eff}) under the same parameter sweeps as in A-D, with green box representing feasible region of symptomatic isolation strategy.

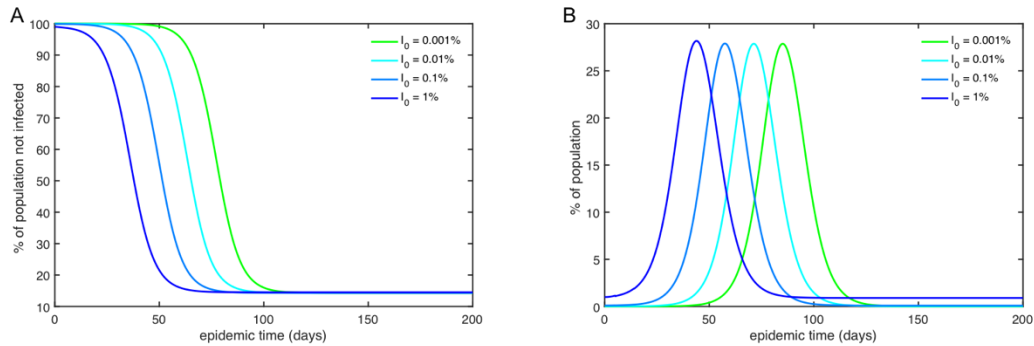


Figure S2: Under a realistic symptomatic isolation scenario, the only effect of varying the initial number of infection is to shift the time at which the infections occur. A. Percent of the population not infected over time for different initial numbers. B. New infections per day over time for different initial infection numbers.

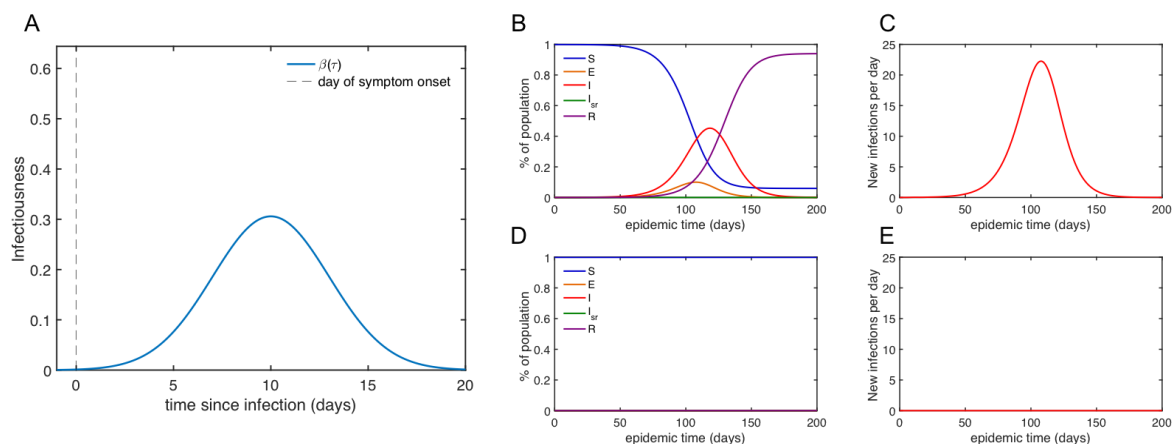


Figure S3. Comparing perfect and no isolation strategies for SARS. A. Infectiousness peaks 10 days after symptom onset in SARS. B. Effect of no isolation strategy on susceptible, exposed, infectious, recovered subpopulations over time for SARS, leading to a projected 94% of the population infected. C. Number of new infections per day if no isolation occurs. D. Effect of perfect symptomatic isolation on epidemiological subpopulations over time, leading to negligible percent of the population infected. E. Number of new infections per day if perfect symptomatic isolation occurs, also leading to negligible peak infections.

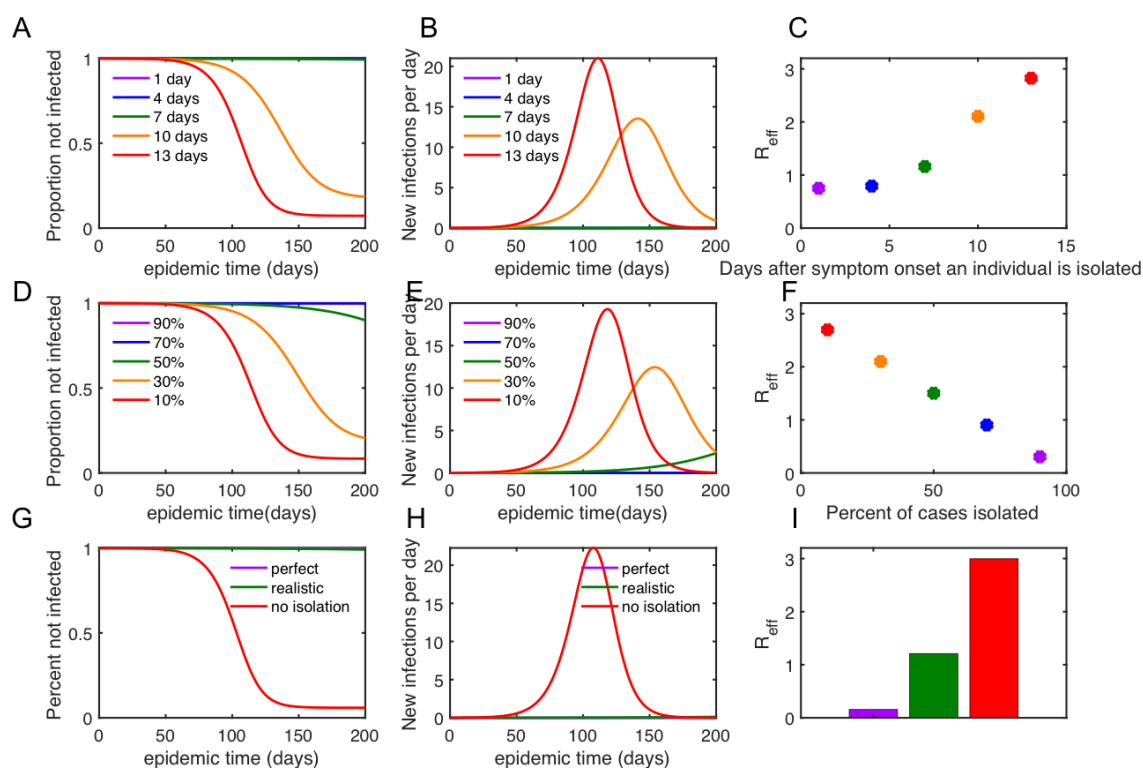


Figure S4: Impact of real-world limitations on the effectiveness of disease control for SARS. A-C. Effect of the number of days post-symptom onset that infectious individuals are isolated. D-F. Effect of the percent of the cases able to be isolated. G-I. Comparison of a perfect symptomatic isolation strategy, a realistic symptomatic isolation strategy, and no isolation strategy at all, which shows that for realistic limitations on disease control, the symptomatic isolation is still extremely effective in SARS.

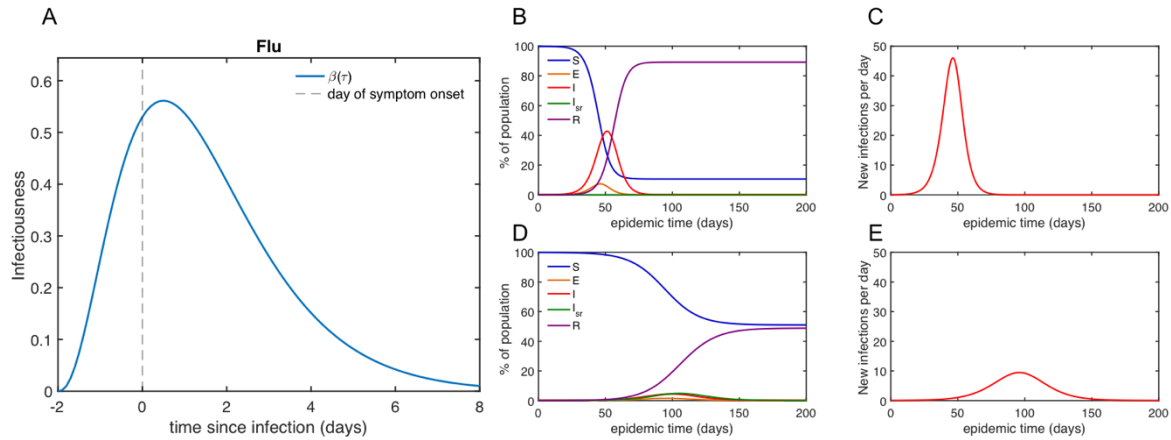


Figure S5 Comparing perfect and no isolation strategies for 1918 flu. A. Flu infectiousness curve peaks 1 day after symptom onset but does contain presymptomatic infectiousness. B. Effect of no isolation strategy on susceptible, exposed, infectious, recovered subpopulations over time for 1918 flu, leading to a projected 89% of the population infected. C. Number of new infections per day if no isolation occurs. D. Effect of perfect symptomatic isolation on epidemiological subpopulations over time, leading to 49% of the population infected. E. Number of new infections per day if perfect symptomatic isolation occurs.

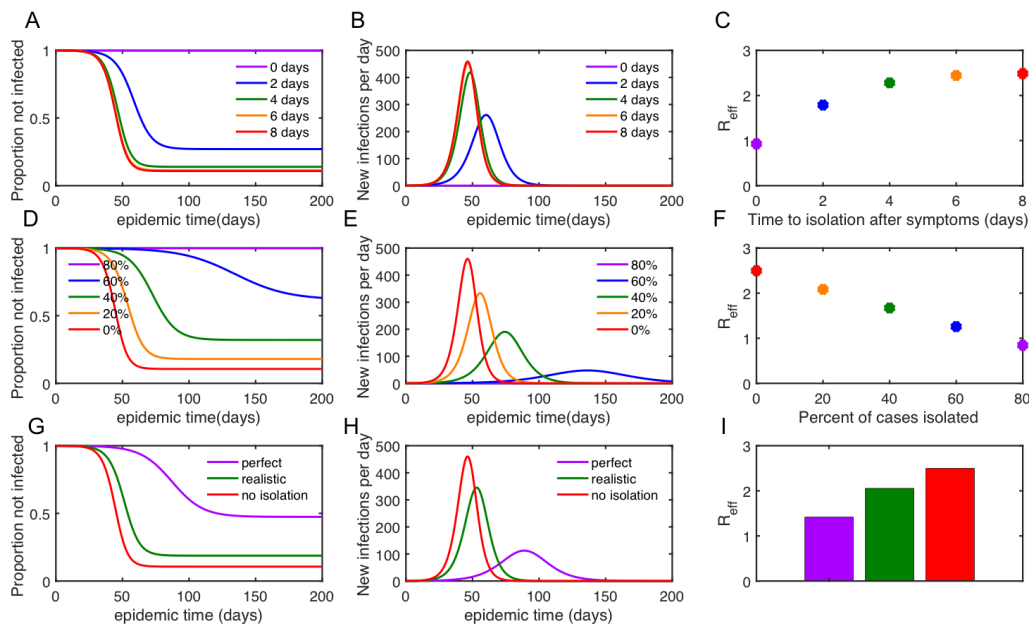


Figure S6: Impact of real-world limitations on the effectiveness of disease control for 1918 flu. A-C. Effect of the number of days post-symptom onset that infectious individuals are isolated. D-F. Effect of the percent of the cases able to be isolated. G-H. Comparison of a perfect symptomatic isolation strategy, a realistic symptomatic isolation strategy, and no isolation strategy at all, which shows that for realistic limitations on disease control, the symptomatic isolation is somewhat effective, but does not completely control the outbreak. I. Effective reproduction number R_{eff} for different isolation strategies.

