

Supplementary Figures Contents

Figure S1: Flowchart of the steps taken to define DSM-V-like Generalized Anxiety Disorder (GAD) diagnosis from the specified UK Biobank field IDs, following the DSM-V criteria as outlined in <http://dsm.psychiatryonline.org/doi/full/10.1176/appi.books.9780890425596.dsm05#BABDFBHJ>

Figure S2:A: Genome-wide genetic correlations between males and females for six traits. Bars represent standard error estimates. **B:** Genome-wide genetic correlations between traits stratified by females (lower triangle) and males (upper triangle). Asterisks indicate genetic correlations that pass the $FDR < 5\%$ cutoff. See Table S5 for complete numerical results.

Figure S3: Estimates of local genetic covariance between anxiety meta-analysis and other phenotypes. Red indicates genomic regions with significant local genetic covariances. Text identifies the region as chromosome:start bp-end bp.

Figure S4: Estimates of local genetic covariance between alcohol dependence and other phenotypes. Red indicates genomic regions with significant local genetic covariances. Text identifies the region as chromosome:start bp-end bp.

Figure S5: Estimates of local genetic covariance between AUDIT-C and other phenotypes. Red indicates genomic regions with significant local genetic covariances. Text identifies the region as chromosome:start bp-end bp.

Figure S6: Estimates of local genetic covariance between the Anxiety NeuroGenetics Study and other phenotypes. Red indicates genomic regions with significant local genetic covariances. Text identifies the region as chromosome:start bp-end bp.

Figure S7: Estimates of local genetic covariance between drinks per week and other phenotypes. Red indicates genomic regions with significant local genetic covariances. Text identifies the region as chromosome:start bp-end bp.

Figure S8: Estimates of local genetic covariance between the AUDIT-P and other phenotypes. Red indicates genomic regions with significant local genetic covariances. Text identifies the region as chromosome:start bp-end bp.

Figure S9: Estimates of local genetic covariance between the AUDIT-T and other phenotypes. Red indicates genomic regions with significant local genetic covariances. Text identifies the region as chromosome:start bp-end bp.

Figure S10: Estimates of genetic covariance in the predicted functional genome. Asterisks indicate significant ($p_{\text{func}} < 8.93 \times 10^{-4}$) covariance estimates.

Figure S11: Estimates of genetic covariance in the predicted non-functional genome. Asterisks indicate significant ($p_{\text{func}} < 8.93 \times 10^{-4}$) covariance estimates.

Figure S12: Estimates of genetic covariance in immune tissue. Asterisks indicate significant ($p_{\text{tissue}} < 2.6 \times 10^{-4}$) stratified covariance estimates.

Figure S13: Estimates of genetic covariance in brain tissue. Asterisks indicate significant ($p_{\text{tissue}} < 2.6 \times 10^{-4}$) stratified covariance estimates.

Figure S14: Estimates of genetic covariance in the frontal cortex. Asterisks indicate significant ($p_{\text{brain}} < 1.37 \times 10^{-4}$) stratified covariance estimates.

Figure S15: Estimates of correlation of LDSC regression coefficients from the baseline analysis. Asterisks indicated regression coefficient correlation estimates that pass the FDR < 5% cutoff.

Figure S16: Baseline regression coefficient correlation between all trait pairs.

Figure S17: Plot of cell type- and tissue-specific annotations with enrichment scores that pass the FDR < 5% cutoff. The colors represent the three phenotypic categories of the sets: anxiety disorders (red), PAU (light blue) and alcohol consumption (dark blue).

Figure S18: Estimates of correlation of LDSC regression coefficients from the cell type- and tissue-specific analysis. Asterisks indicated regression coefficient correlation estimates that pass the FDR < 5% cutoff.

Figure S19: Cell type- and tissue-specific regression coefficients correlation between all trait pairs.

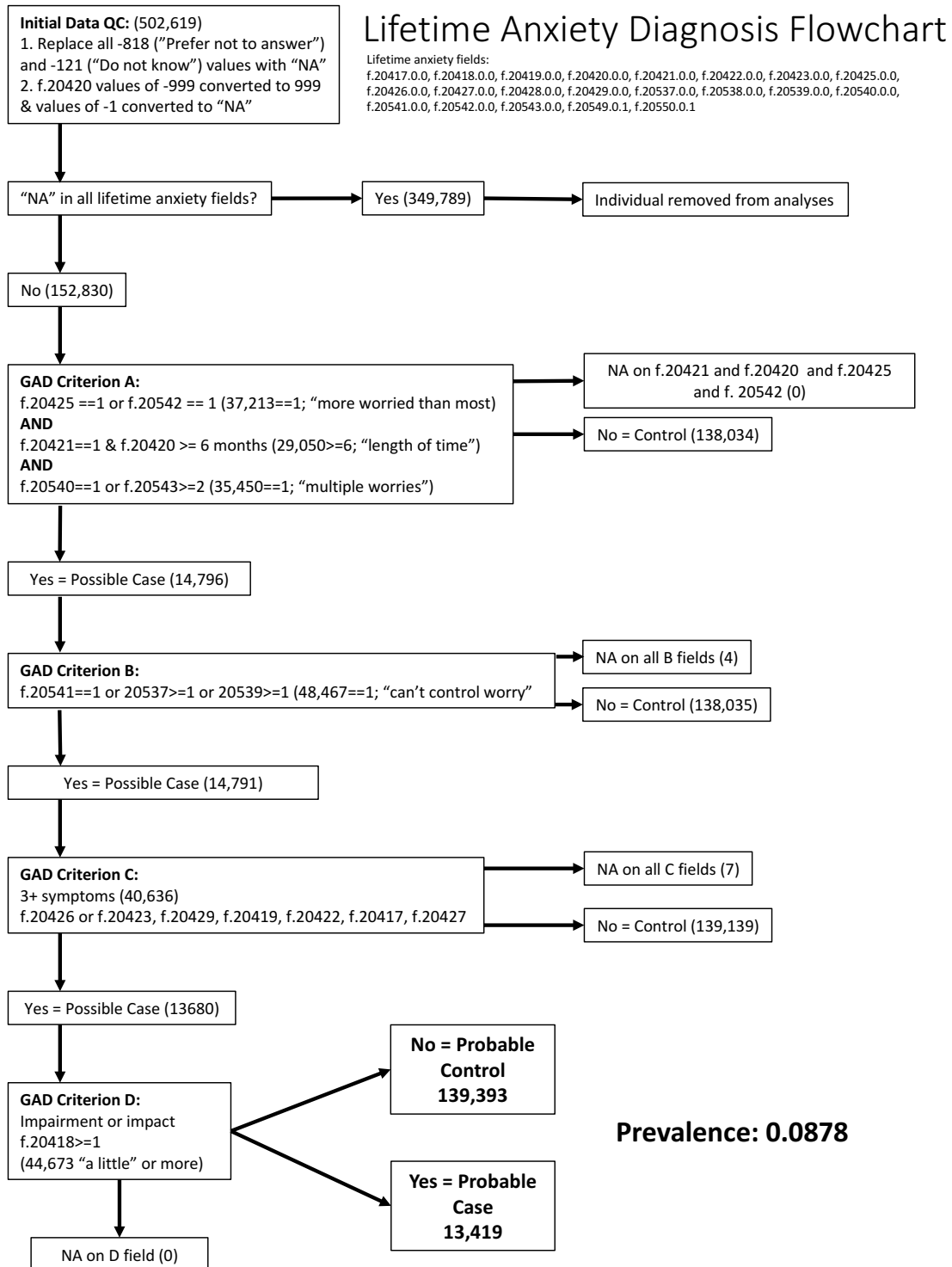


Figure S1: Flowchart of the steps taken to define DSM-V-like Generalized Anxiety Disorder (GAD) diagnosis from the specified UK Biobank field IDs, following the DSM-V criteria as outlined in <http://dsm.psychiatryonline.org/doi/full/10.1176/appi.books.9780890425596.dsm05#BABDFBHJ>

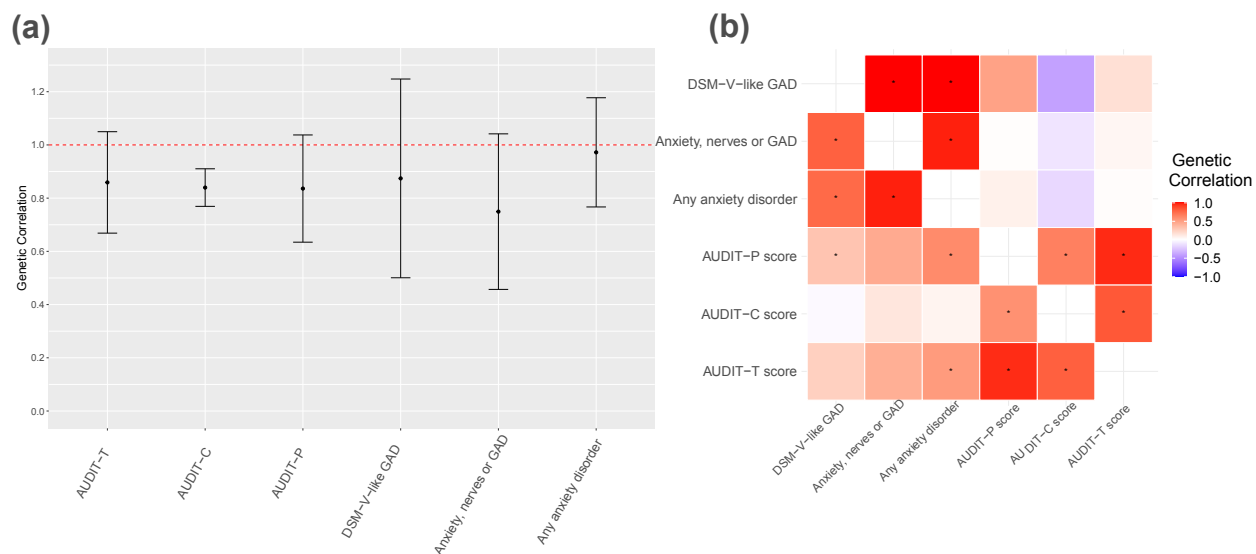


Figure S2:A: Genome-wide genetic correlations between males and females for six traits. Bars represent standard error estimates. **B:** Genome-wide genetic correlations between traits stratified by females (lower triangle) and males (upper triangle). Asterisks indicate genetic correlations that pass the FDR < 5% cutoff. See Table S5 for complete numerical results.

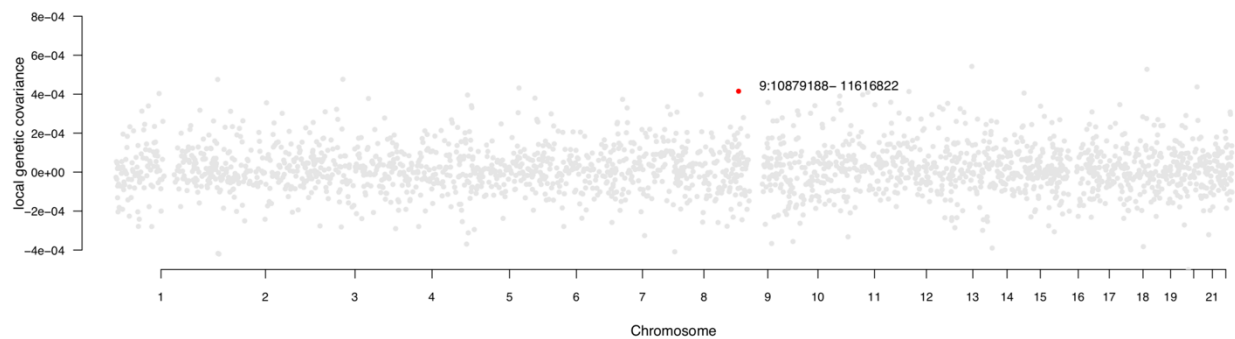


Figure S3 (a): Estimates of local genetic covariance between anxiety meta-analysis and alcohol dependence. Red indicates genomic regions with significant local genetic covariances. Text identifies the region as chromosome:start bp-end bp.

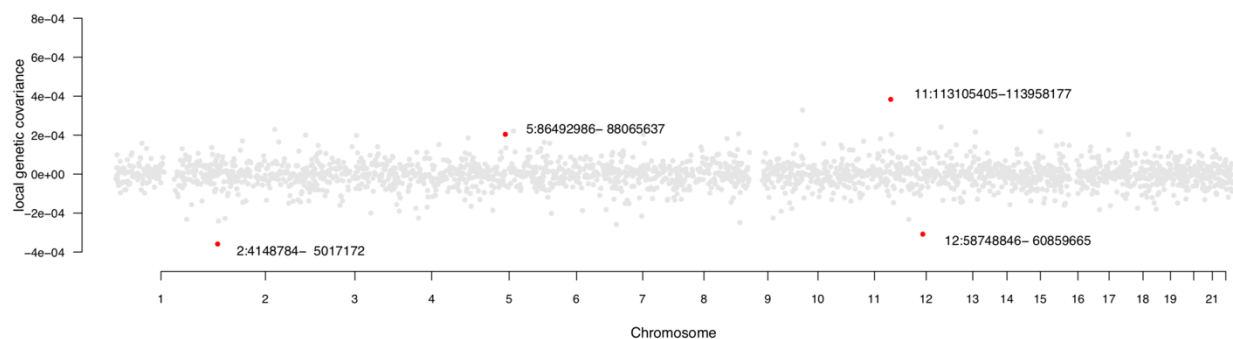


Figure S3 (b): Estimates of local genetic covariance between anxiety meta-analysis and AUDIT-C. Red indicates genomic regions with significant local genetic covariances. Text identifies the region as chromosome:start bp-end bp.

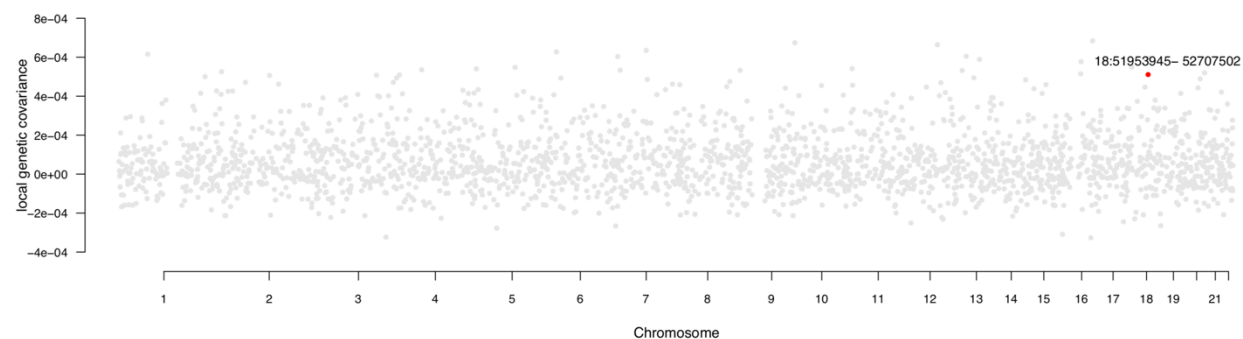


Figure S3 (c): Estimates of local genetic covariance between anxiety meta-analysis and Anxiety NeuroGenetics STudy. Red indicates genomic regions with significant local genetic covariances. Text identifies the region as chromosome:start bp-end bp.

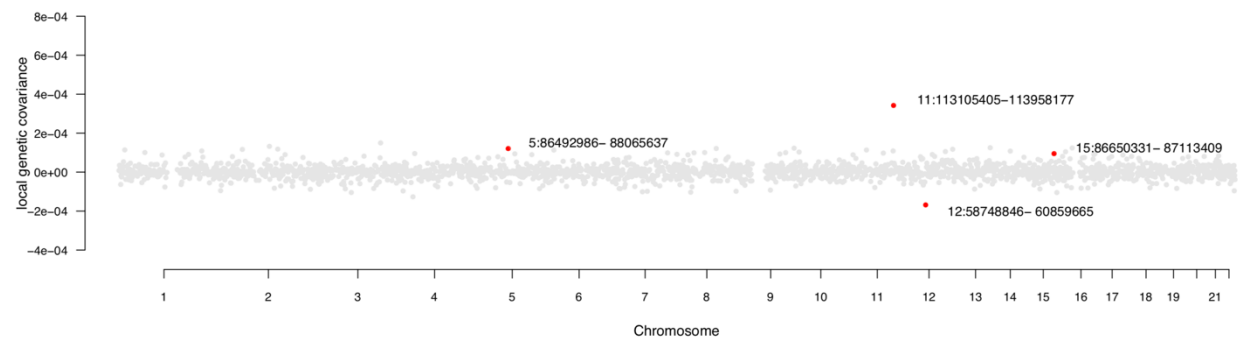


Figure S3 (d): Estimates of local genetic covariance between anxiety meta-analysis and drinks per week. Red indicates genomic regions with significant local genetic covariances. Text identifies the region as chromosome:start bp-end bp.

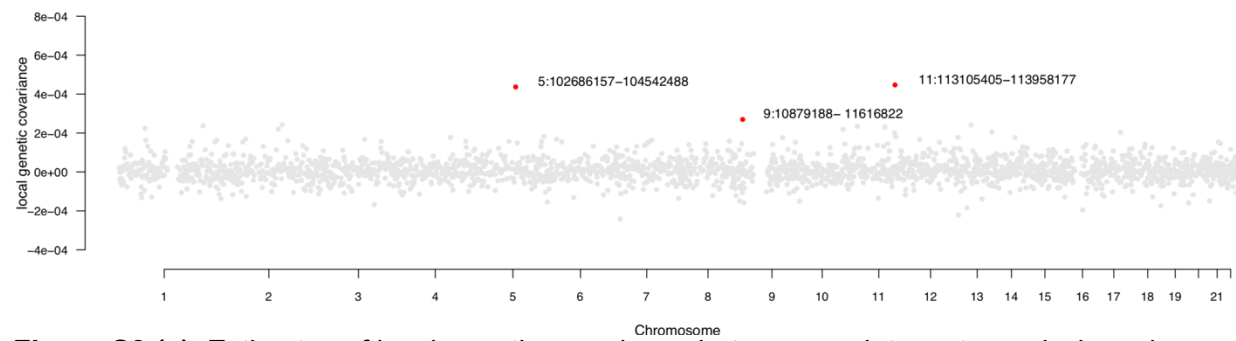


Figure S3 (e): Estimates of local genetic covariance between anxiety meta-analysis and AUDIT-P. Red indicates genomic regions with significant local genetic covariances. Text identifies the region as chromosome:start bp-end bp.

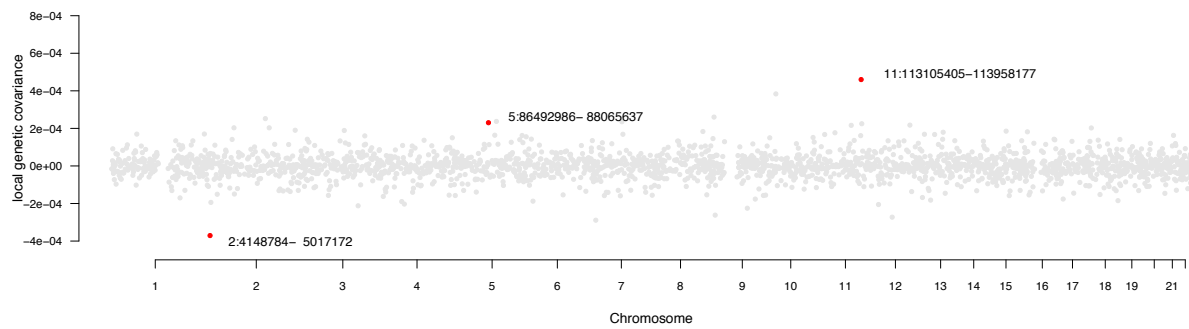


Figure S3 (f): Estimates of local genetic covariance between anxiety meta-analysis and AUDIT-T. Red indicates genomic regions with significant local genetic covariances. Text identifies the region as chromosome:start bp-end bp.

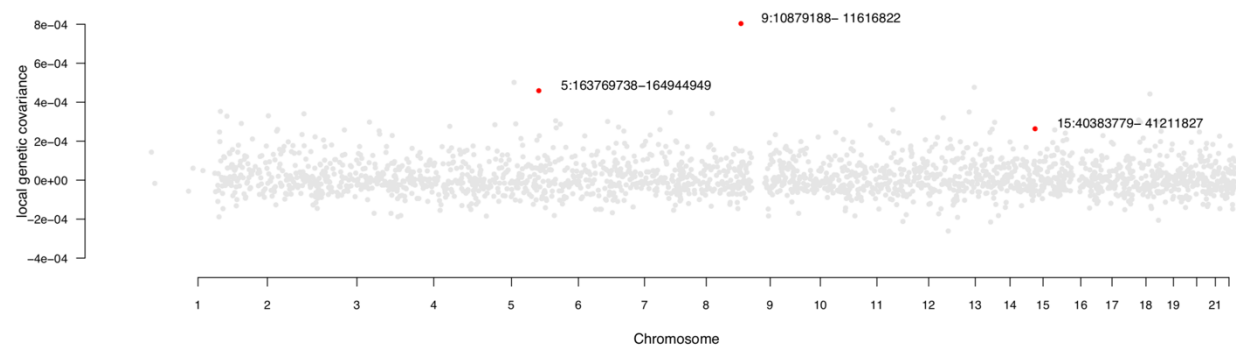


Figure S3 (g): Estimates of local genetic covariance between anxiety meta-analysis and UKB lifetime anxiety. Red indicates genomic regions with significant local genetic covariances. Text identifies the region as chromosome:start bp-end bp.

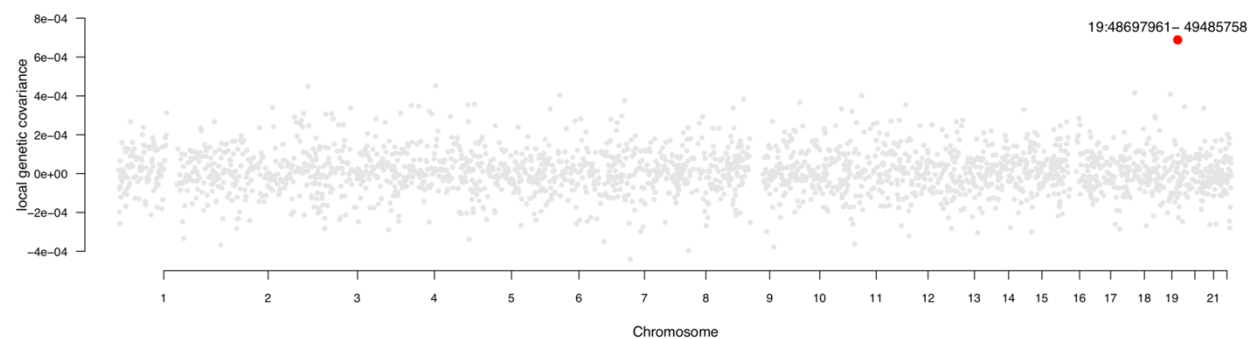


Figure S4 (a): Estimates of local genetic covariance between alcohol dependence and AUDIT-C. Red indicates genomic regions with significant local genetic covariances. Text identifies the region as chromosome:start bp-end bp.

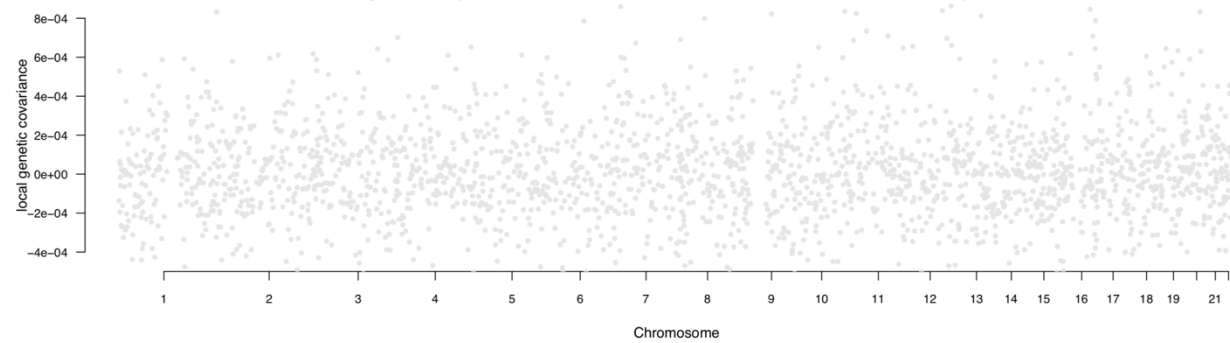


Figure S4 (b): Estimates of local genetic covariance between alcohol dependence and the Anxiety NeuroGenetics Study.

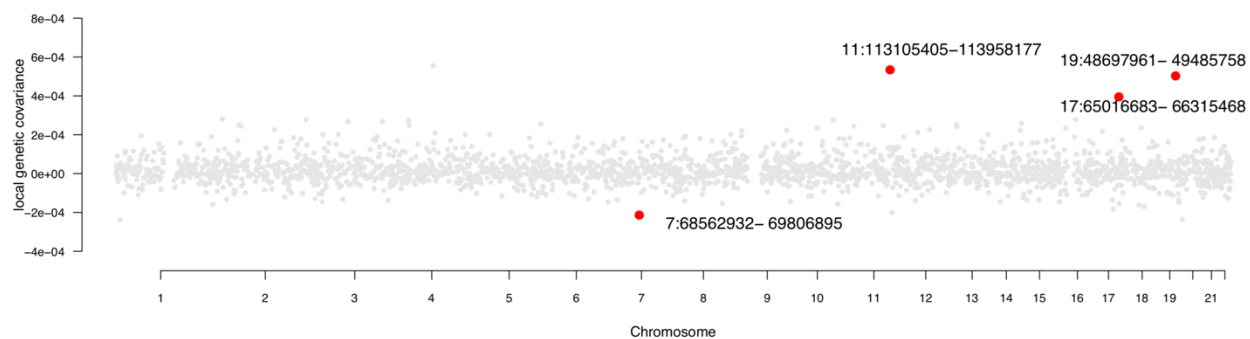


Figure S4 (c): Estimates of local genetic covariance between alcohol dependence and drinks per week. Red indicates genomic regions with significant local genetic covariances. Text identifies the region as chromosome:start bp-end bp.

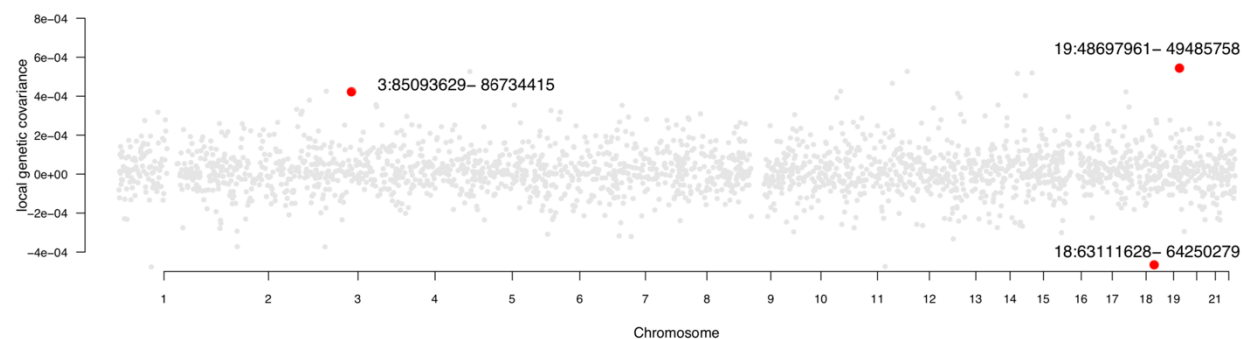


Figure S4 (d): Estimates of local genetic covariance between alcohol dependence and AUDIT-P. Red indicates genomic regions with significant local genetic covariances. Text identifies the region as chromosome:start bp-end bp.

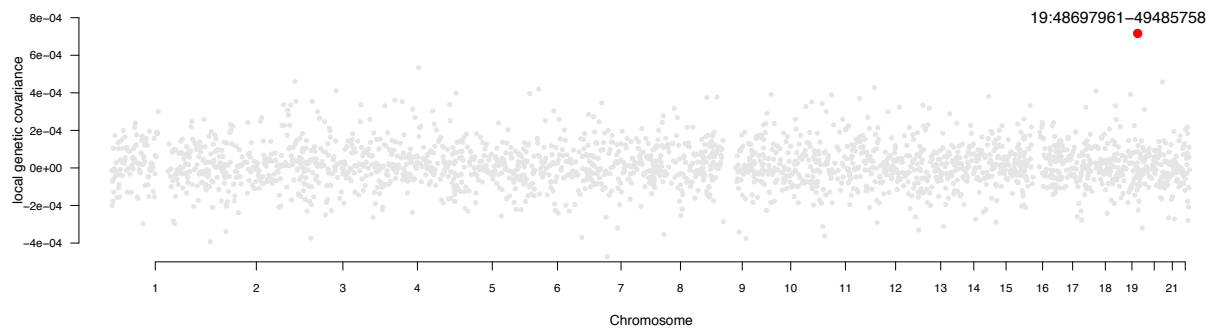


Figure S4 (e): Estimates of local genetic covariance between alcohol dependence and AUDIT-T. Red indicates genomic regions with significant local genetic covariances. Text identifies the region as chromosome:start bp-end bp.

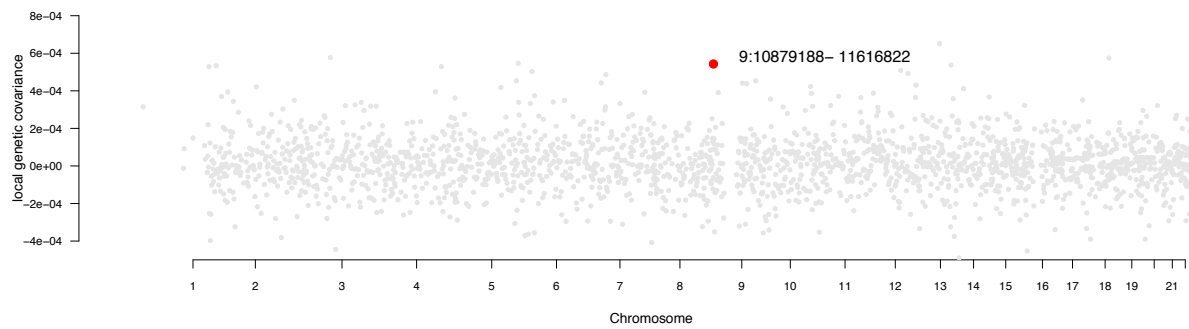


Figure S4 (f): Estimates of local genetic covariance between alcohol dependence and UKB lifetime anxiety. Red indicates genomic regions with significant local genetic covariances. Text identifies the region as chromosome:start bp-end bp.

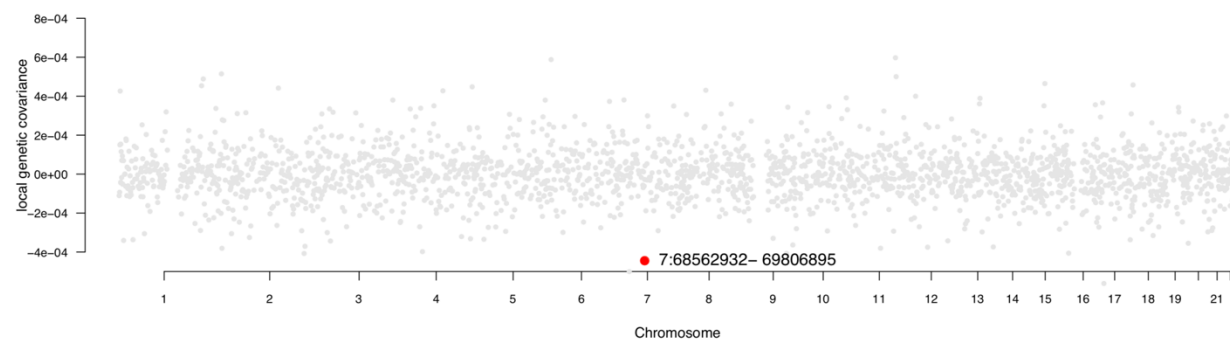


Figure S5 (a): Estimates of local genetic covariance between AUDIT-C and the Anxiety NeuroGenetics STudy. Red indicates genomic regions with significant local genetic covariances. Text identifies the region as chromosome:start bp-end bp.

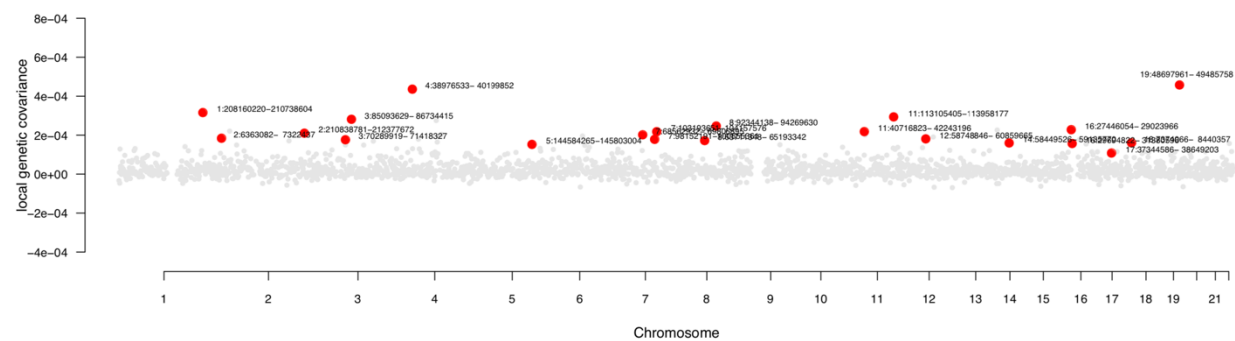


Figure S5 (b): Estimates of local genetic covariance between AUDIT-C and drinks per week. Red indicates genomic regions with significant local genetic covariances. Text identifies the region as chromosome:start bp-end bp.

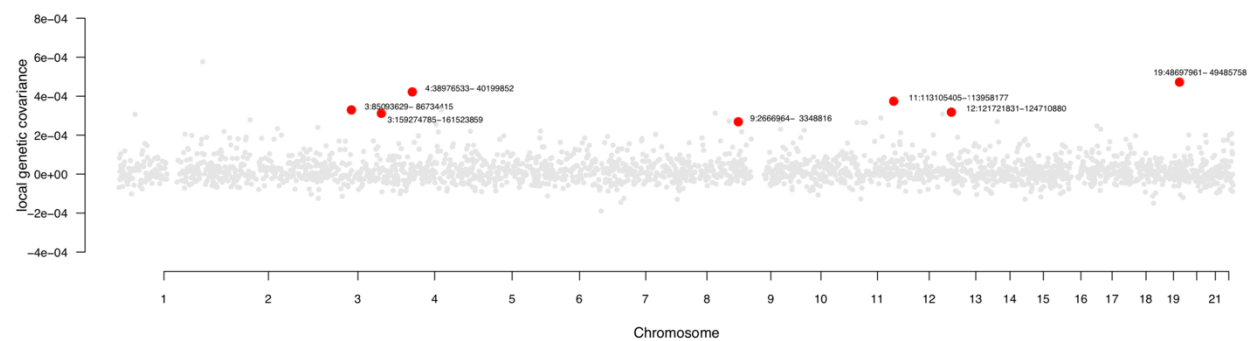


Figure S5 (c): Estimates of local genetic covariance between AUDIT-C and AUDIT-P. Red indicates genomic regions with significant local genetic covariances. Text identifies the region as chromosome:start bp-end bp.

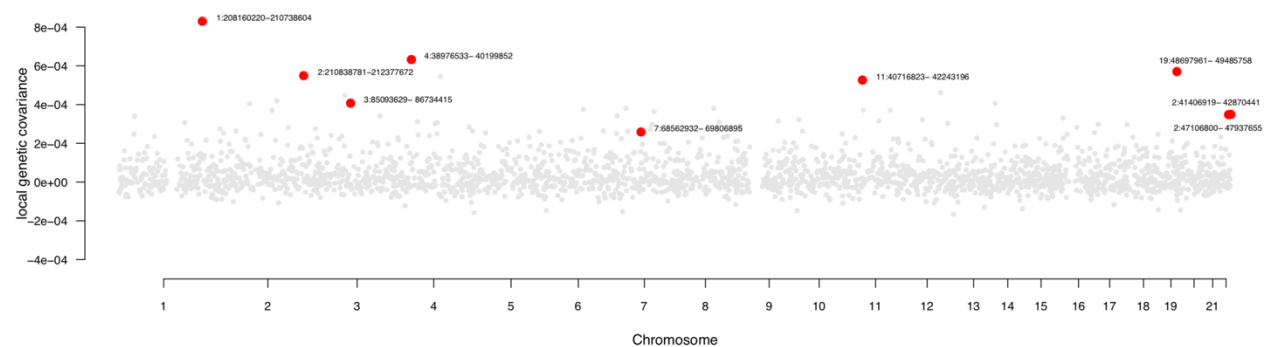


Figure S5 (d): Estimates of local genetic covariance between AUDIT-C and AUDIT-T. Red indicates genomic regions with significant local genetic covariances. Text identifies the region as chromosome:start bp-end bp.

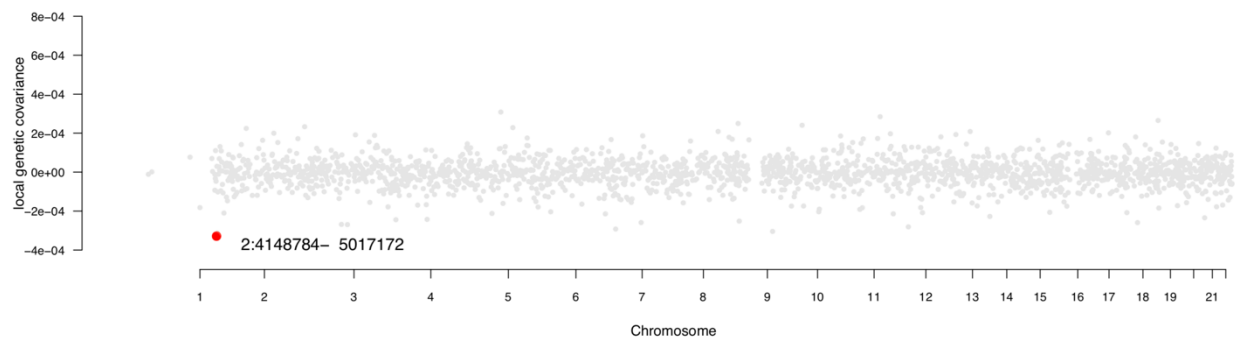


Figure S5 (e): Estimates of local genetic covariance between AUDIT-C and UKB lifetime anxiety. Red indicates genomic regions with significant local genetic covariances. Text identifies the region as chromosome:start bp-end bp.

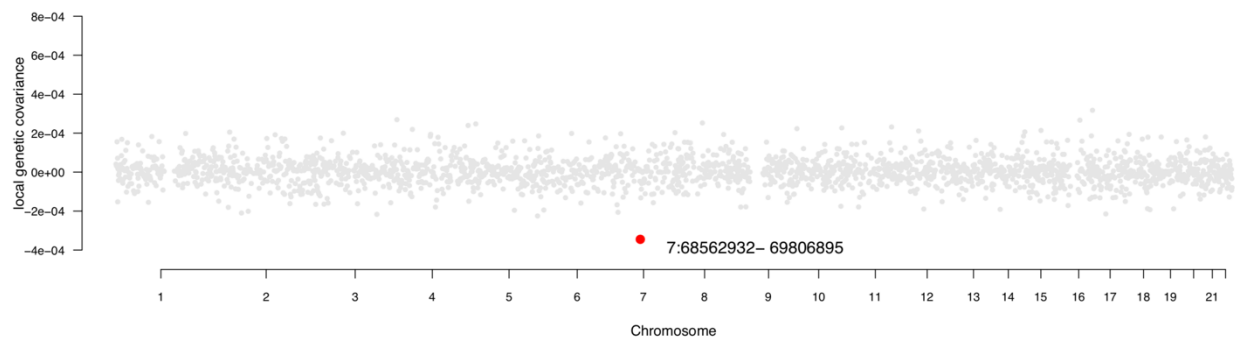


Figure S6 (a): Estimates of local genetic covariance between the Anxiety NeuroGenetics Study and drinks per week. Red indicates genomic regions with significant local genetic covariances. Text identifies the region as chromosome:start bp-end bp.

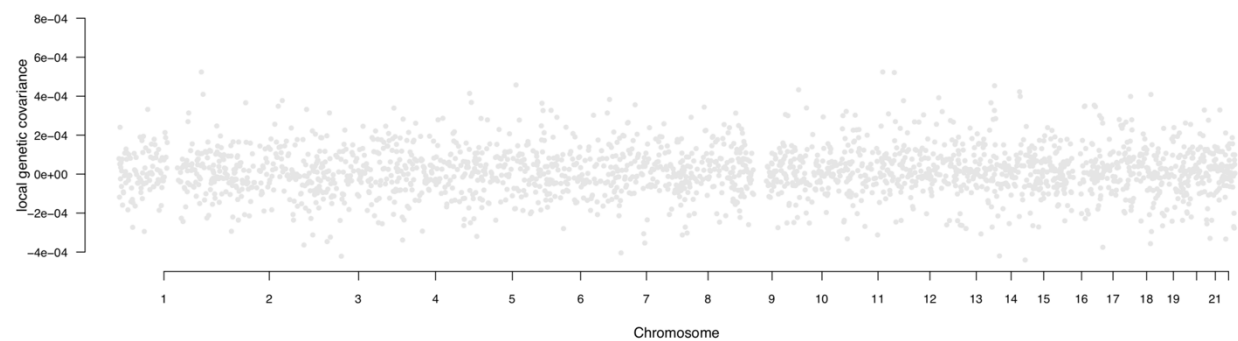


Figure S6 (b): Estimates of local genetic covariance between the Anxiety NeuroGenetics Study and AUDIT-P.

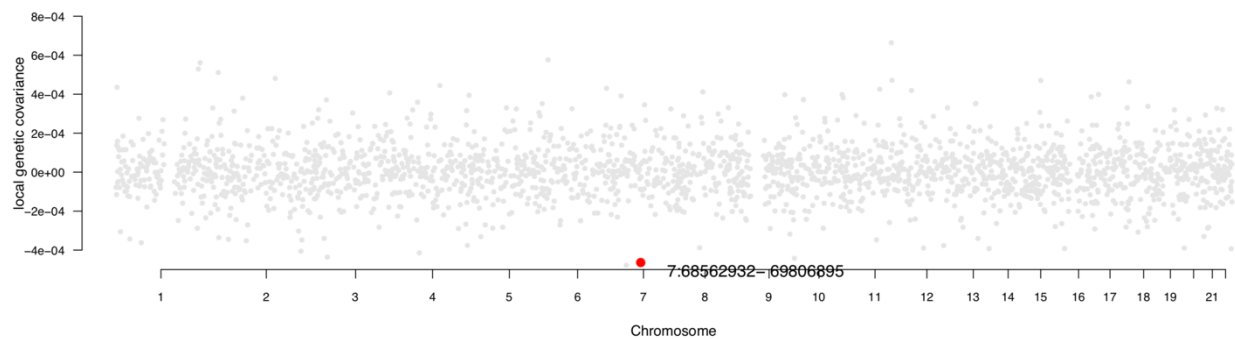


Figure S6 (c): Estimates of local genetic covariance between the Anxiety NeuroGenetics STudy and AUDIT-T. Red indicates genomic regions with significant local genetic covariances. Text identifies the region as chromosome:start bp-end bp.

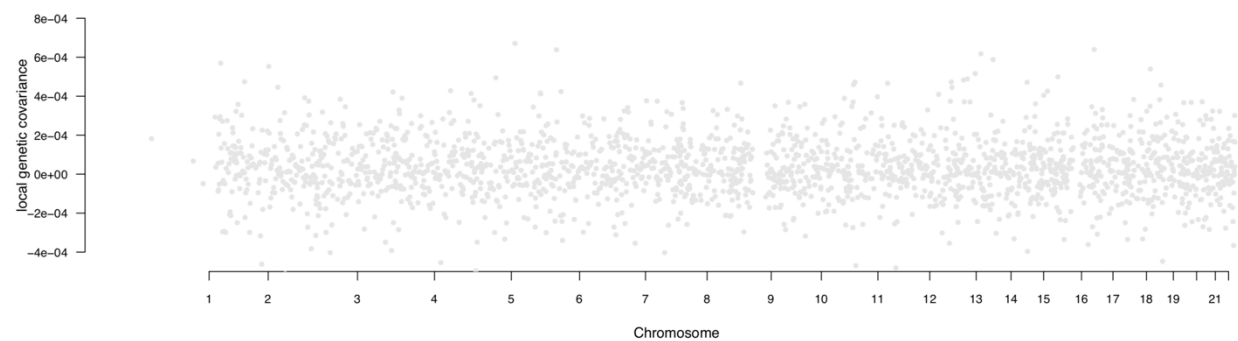


Figure S6 (d): Estimates of local genetic covariance between the Anxiety NeuroGenetics STudy and UKB lifetime anxiety.

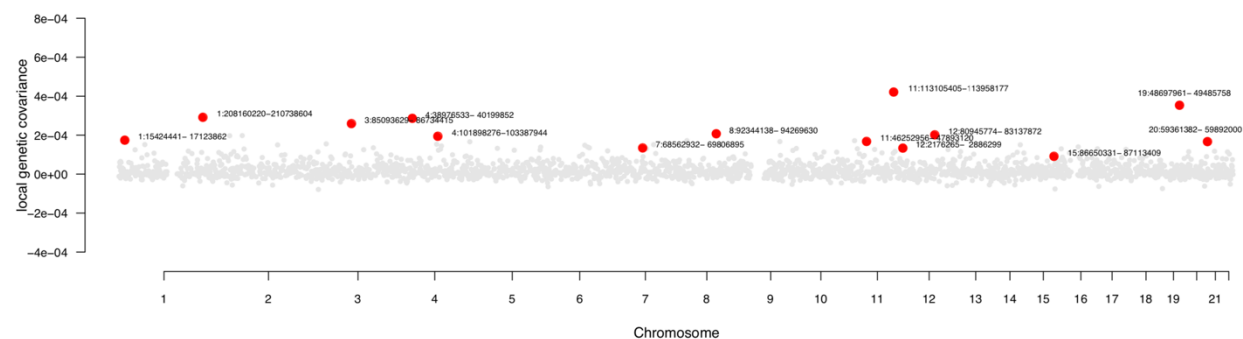


Figure S7 (a): Estimates of local genetic covariance between drinks per week and AUDIT-P. Red indicates genomic regions with significant local genetic covariances. Text identifies the region as chromosome:start bp-end bp.

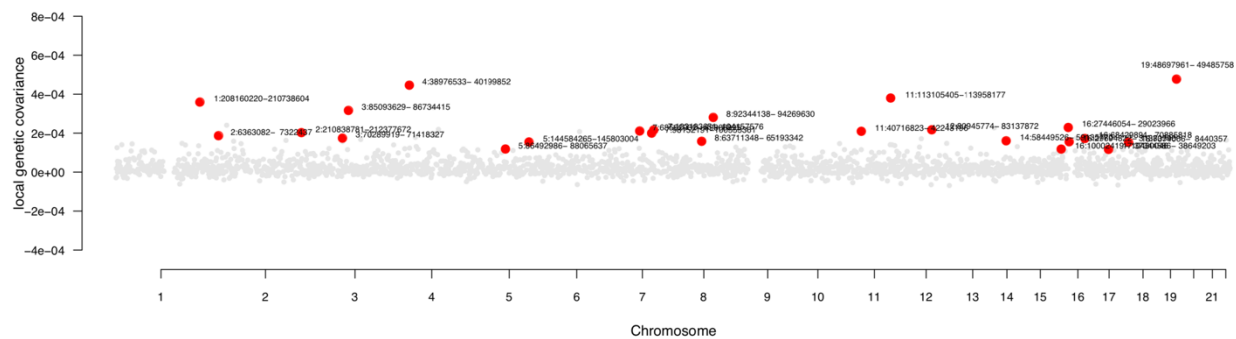


Figure S7 (b): Estimates of local genetic covariance between drinks per week and AUDIT-T. Red indicates genomic regions with significant local genetic covariances. Text identifies the region as chromosome:start bp-end bp.

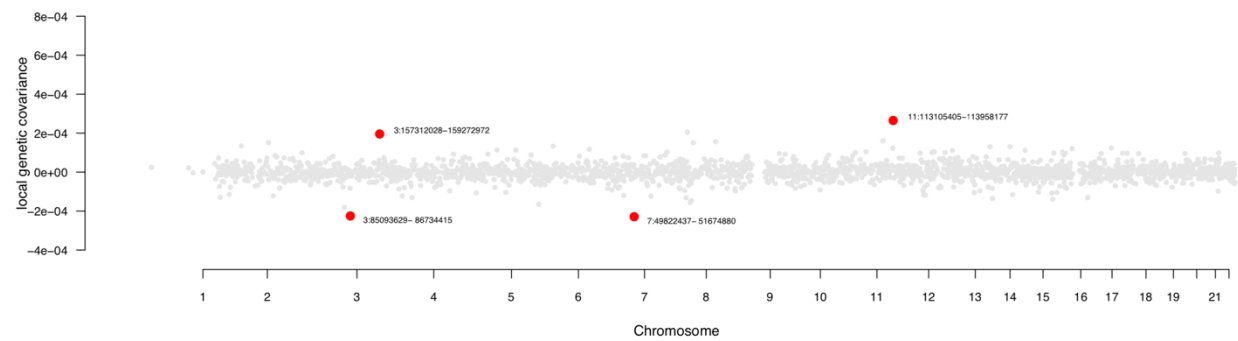


Figure S7 (c): Estimates of local genetic covariance between drinks per week and UKB lifetime anxiety. Red indicates genomic regions with significant local genetic covariances. Text identifies the region as chromosome:start bp-end bp.

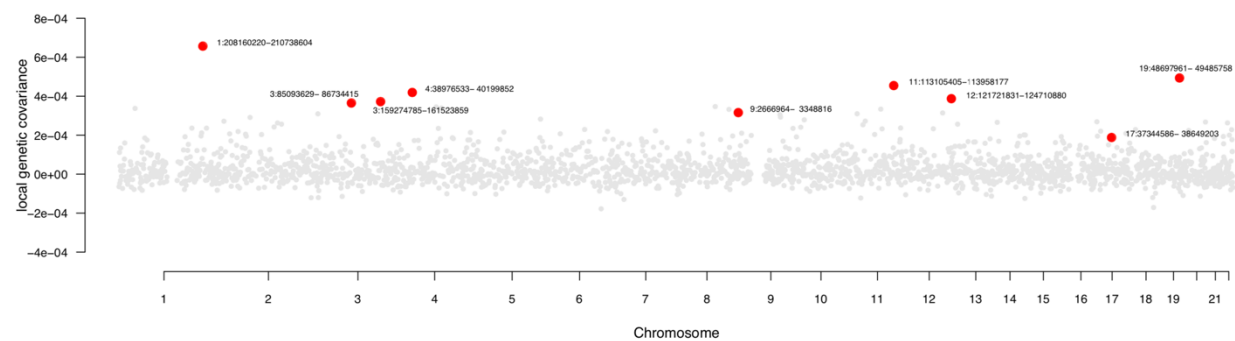


Figure S8 (a): Estimates of local genetic covariance between the AUDIT-P and AUDIT-T. Red indicates genomic regions with significant local genetic covariances. Text identifies the region as chromosome:start bp-end bp.

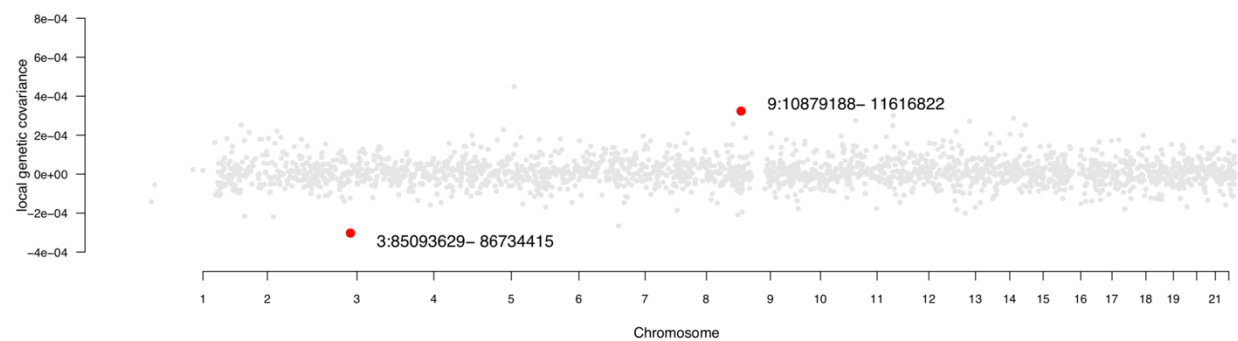


Figure S8 (b): Estimates of local genetic covariance between the AUDIT-P and UKB lifetime anxiety. Red indicates genomic regions with significant local genetic covariances. Text identifies the region as chromosome:start bp-end bp.

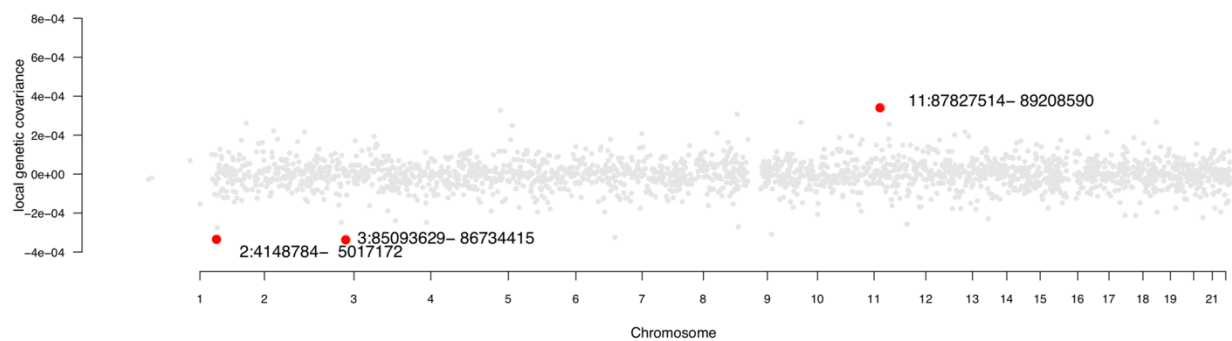


Figure S9 (a): Estimates of local genetic covariance between the AUDIT-T and UKB lifetime anxiety. Red indicates genomic regions with significant local genetic covariances. Text identifies the region as chromosome:start bp-end bp.

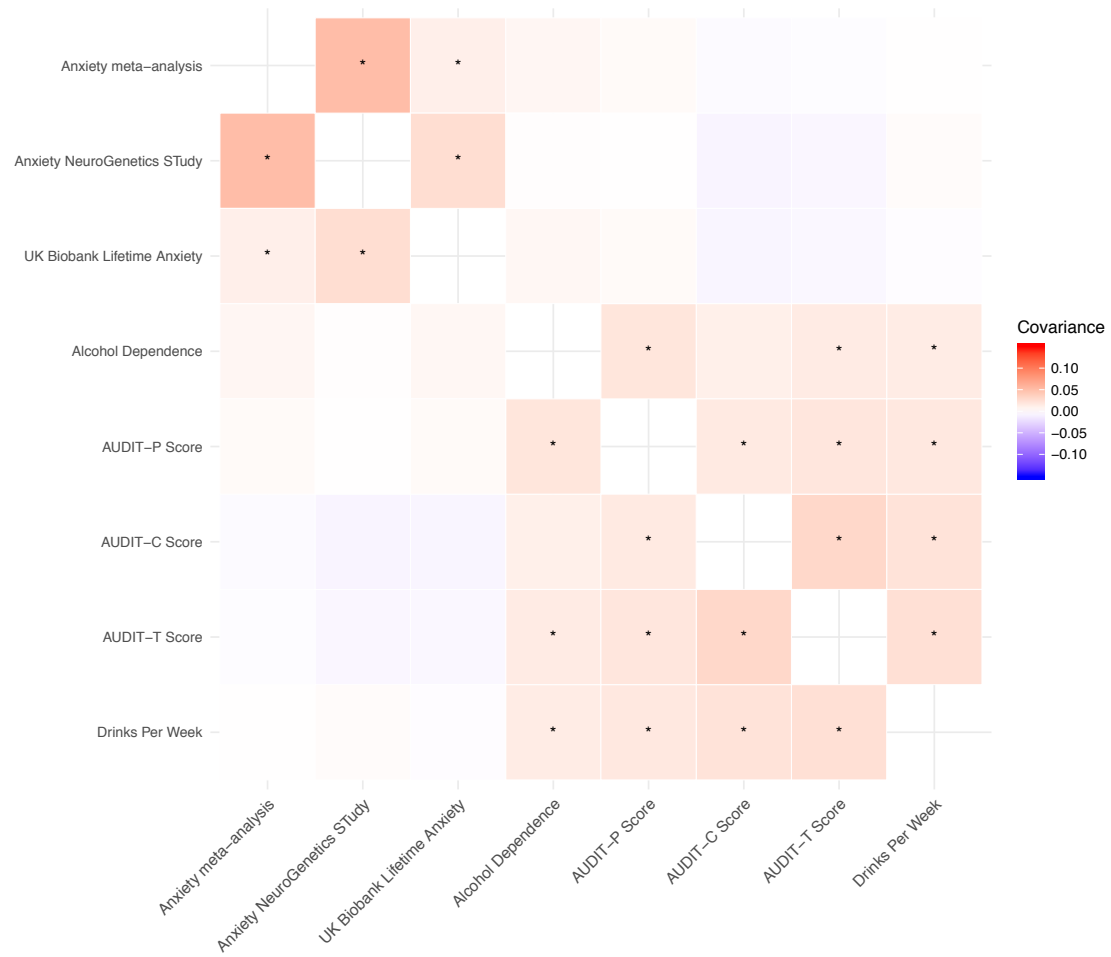


Figure S10: Estimates of genetic covariance in the predicted functional genome. Asterisks indicate significant ($p_{\text{func}} < 8.93 \times 10^{-4}$) covariance estimates.

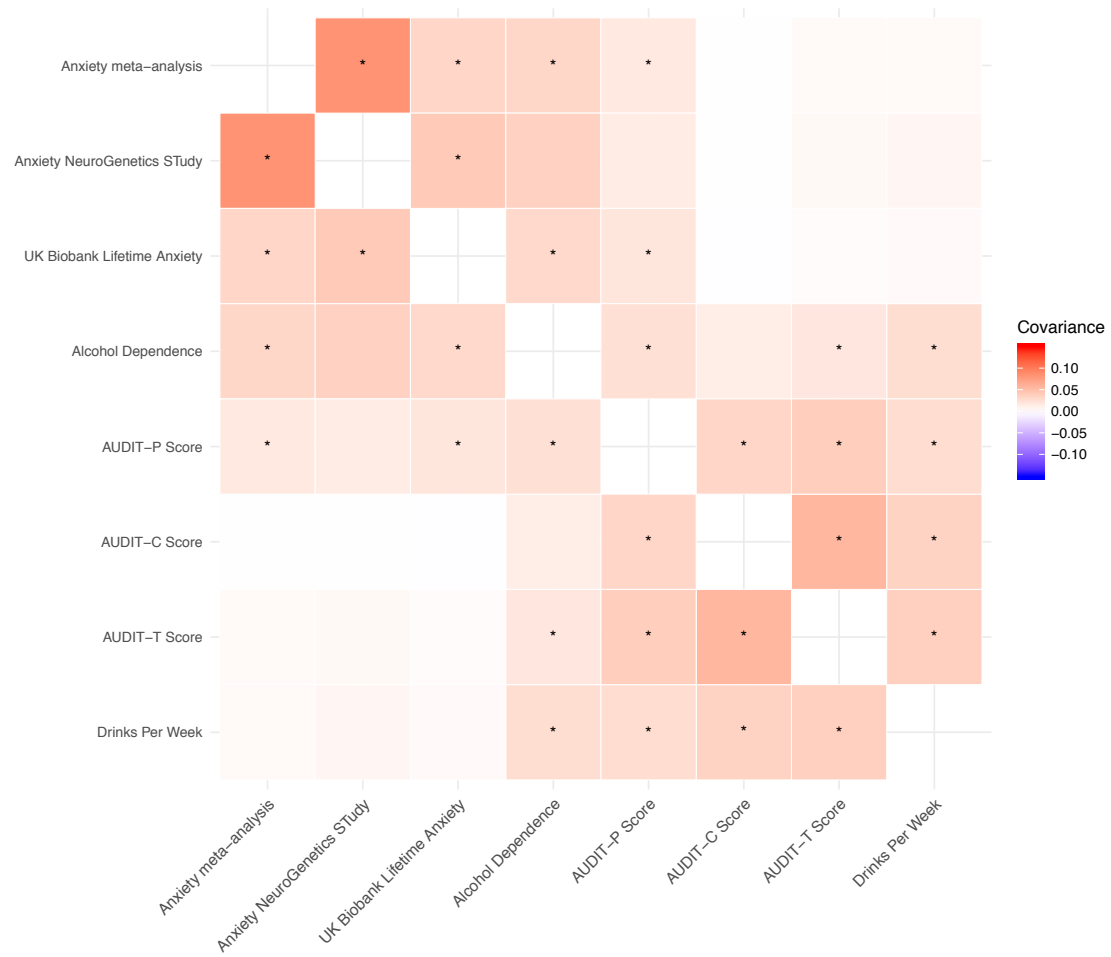


Figure S11: Estimates of genetic covariance in the predicted non-functional genome. Asterisks indicate significant ($p_{\text{func}} < 8.93 \times 10^{-4}$) covariance estimates.

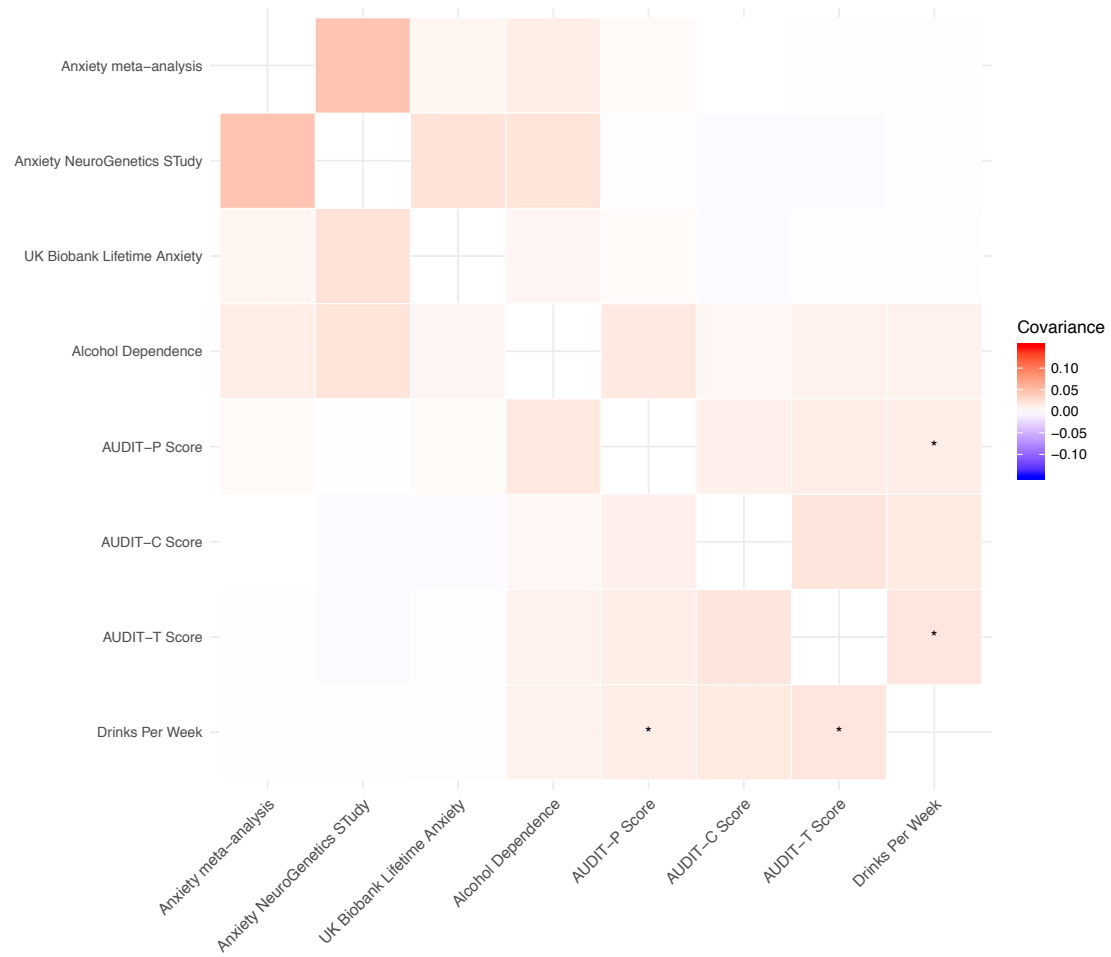


Figure S12: Estimates of genetic covariance in immune tissue. Asterisks indicate significant ($p_{\text{tissue}} < 2.6 \times 10^{-4}$) stratified covariance estimates.

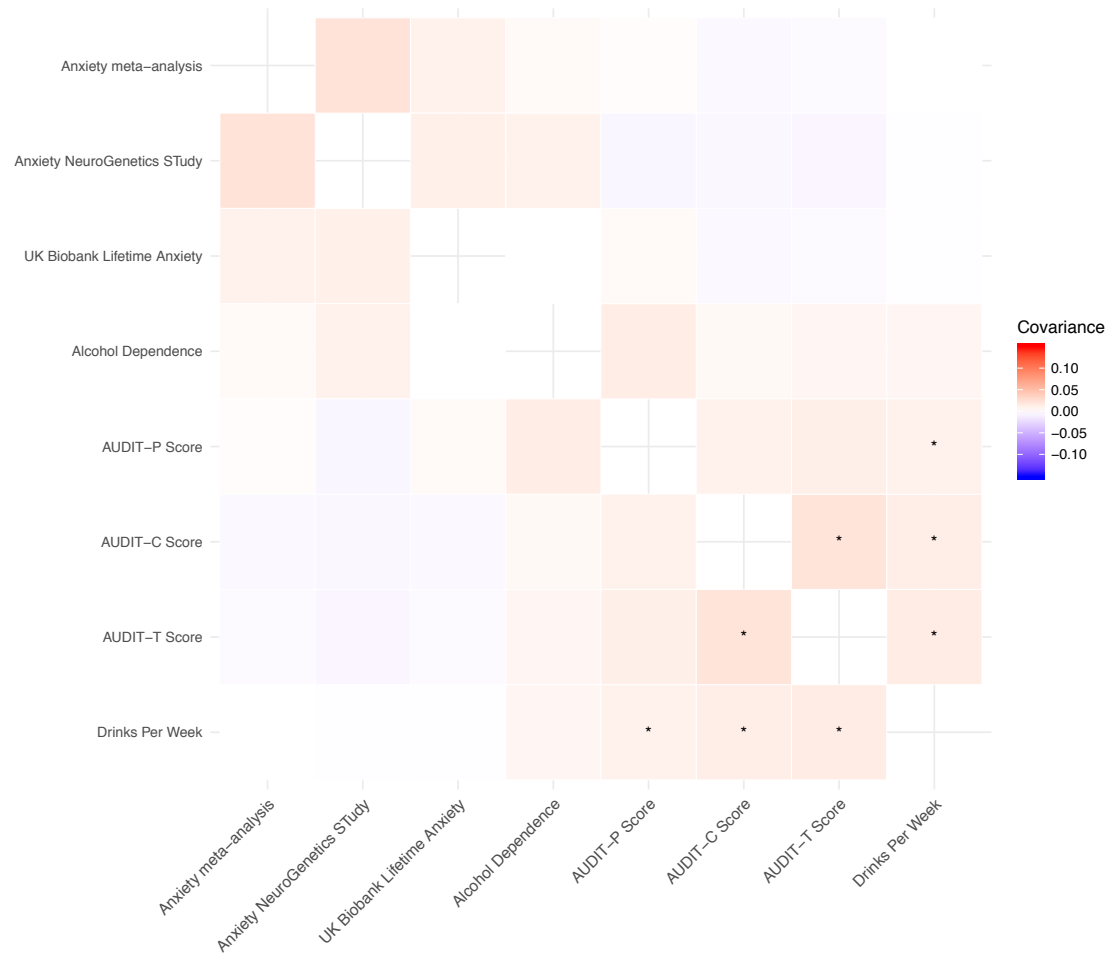


Figure S13: Estimates of genetic covariance in brain tissue. Asterisks indicate significant ($p_{\text{tissue}} < 2.6 \times 10^{-4}$) stratified covariance estimates.

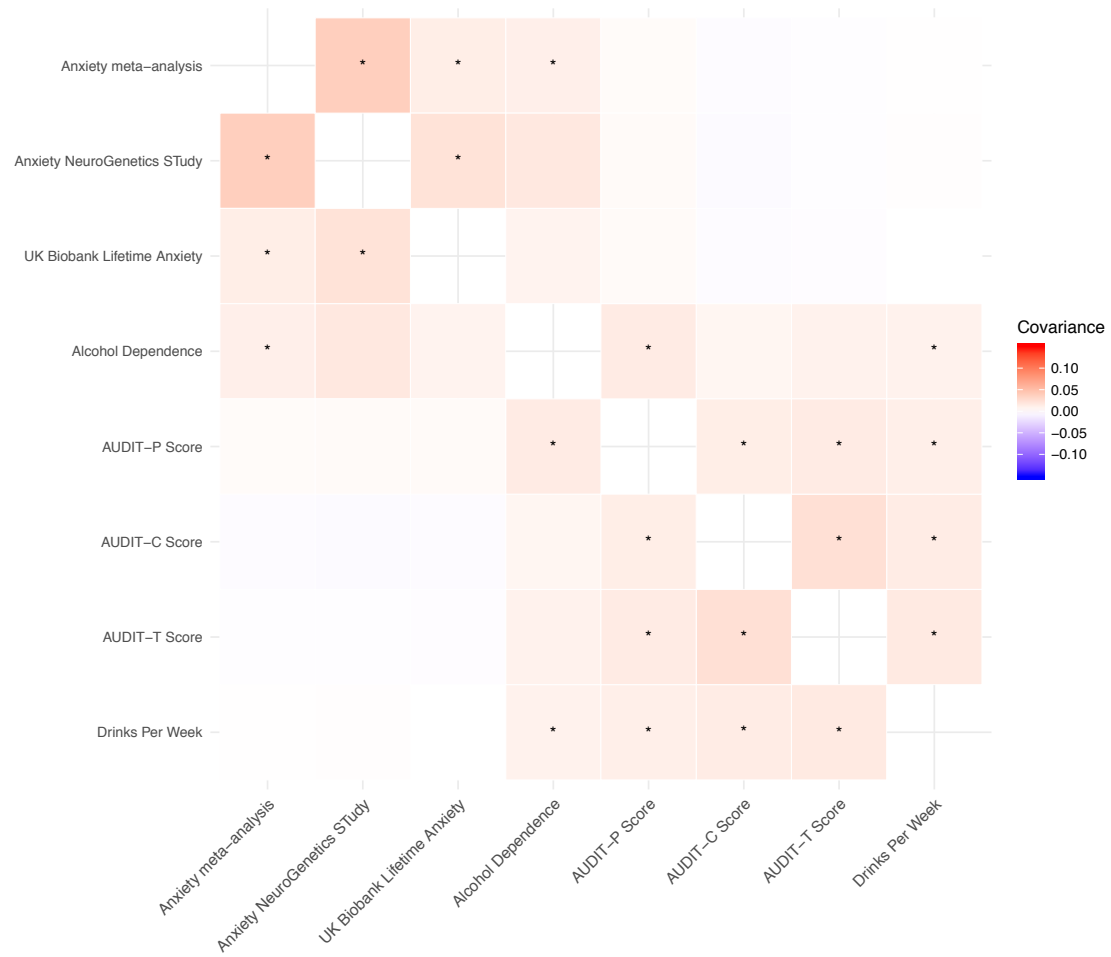


Figure S14: Estimates of genetic covariance in the frontal cortex. Asterisks indicate significant ($p_{\text{brain}} < 1.37 \times 10^{-4}$) stratified covariance estimates.

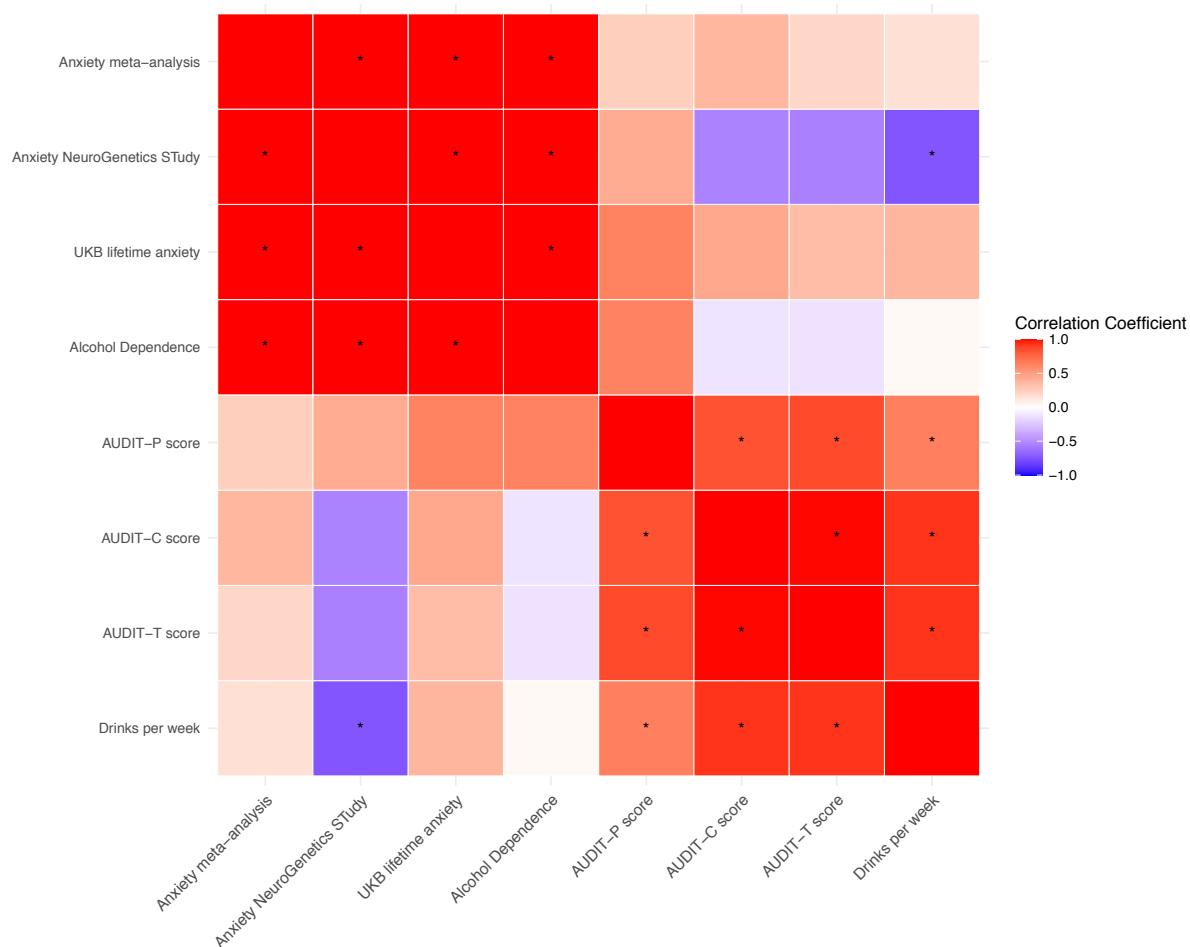


Figure S15: Estimates of correlation of LDSC regression coefficients from the baseline analysis. Asterisks indicated regression coefficient correlation estimates that pass the FDR < 5% cutoff.

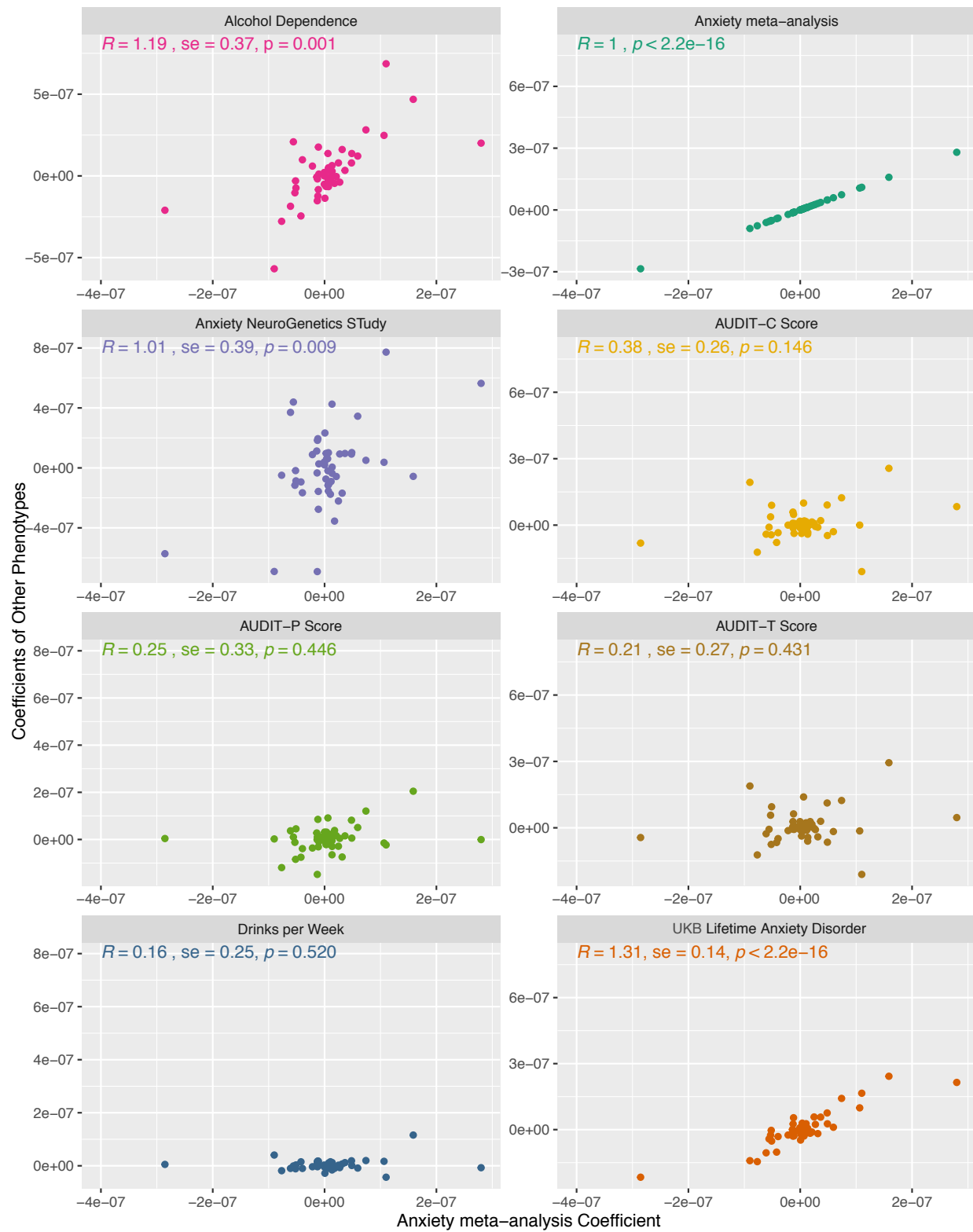


Figure S16 (a): Baseline regression coefficient correlation between anxiety meta-analysis and other phenotypes.



Figure S16 (b): Baseline regression coefficient correlation between UK Biobank lifetime anxiety and other phenotypes.

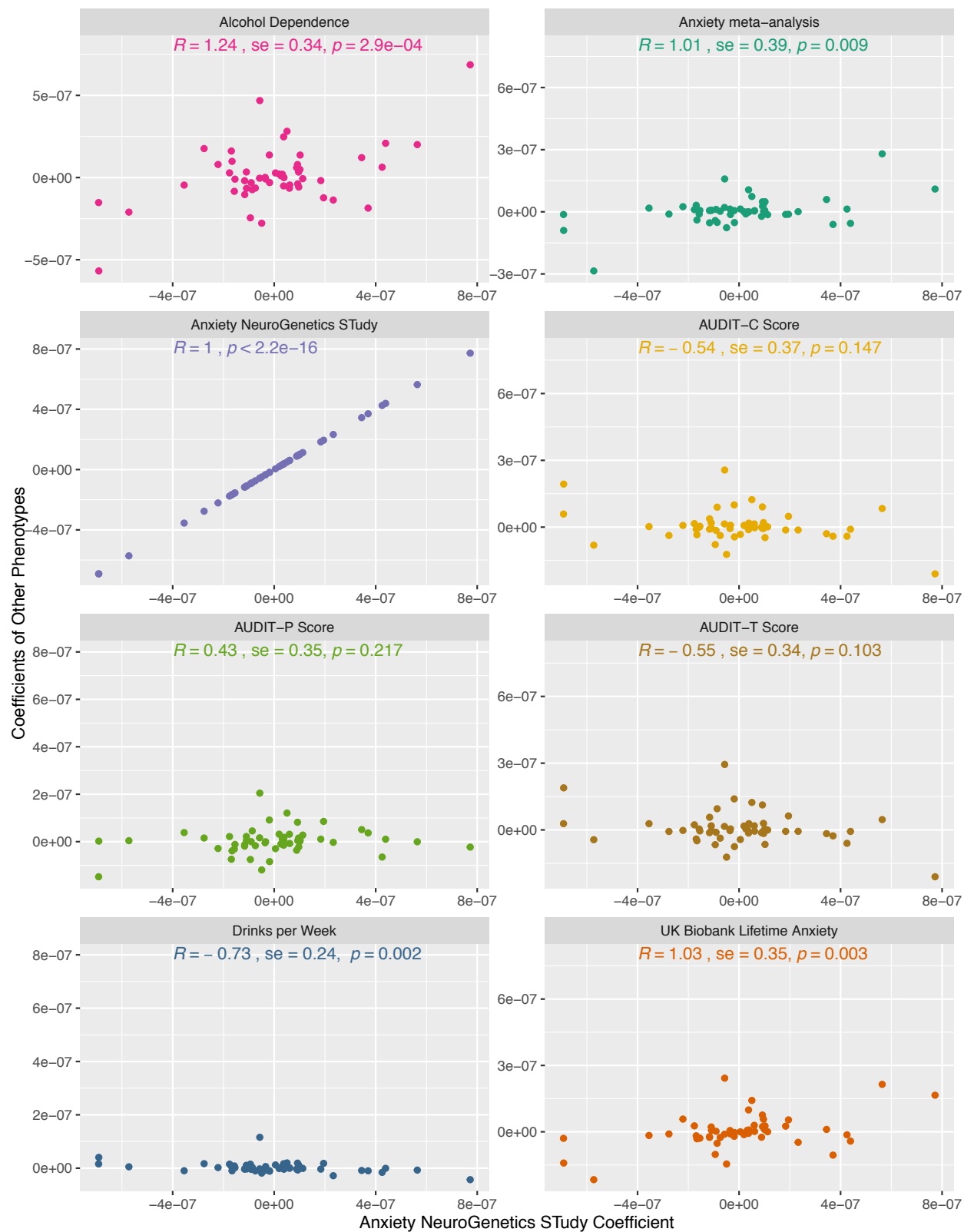


Figure S16 (c): Baseline regression coefficient correlation between ANGST and other phenotypes.

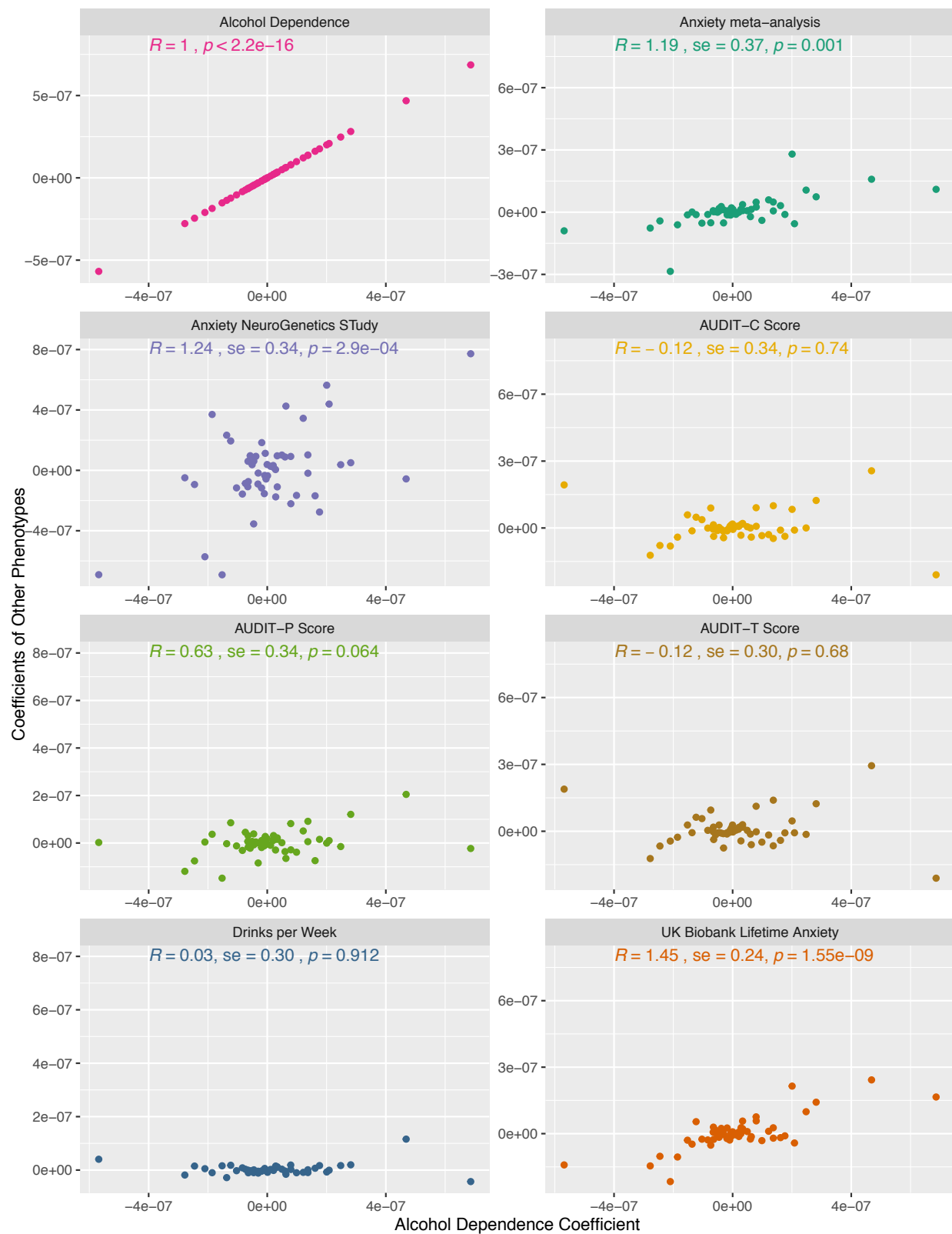


Figure S16 (d): Baseline regression coefficient correlation between alcohol dependence and other phenotypes.



Figure S16 (e): Baseline regression coefficient correlation between AUDIT-P and other phenotypes.

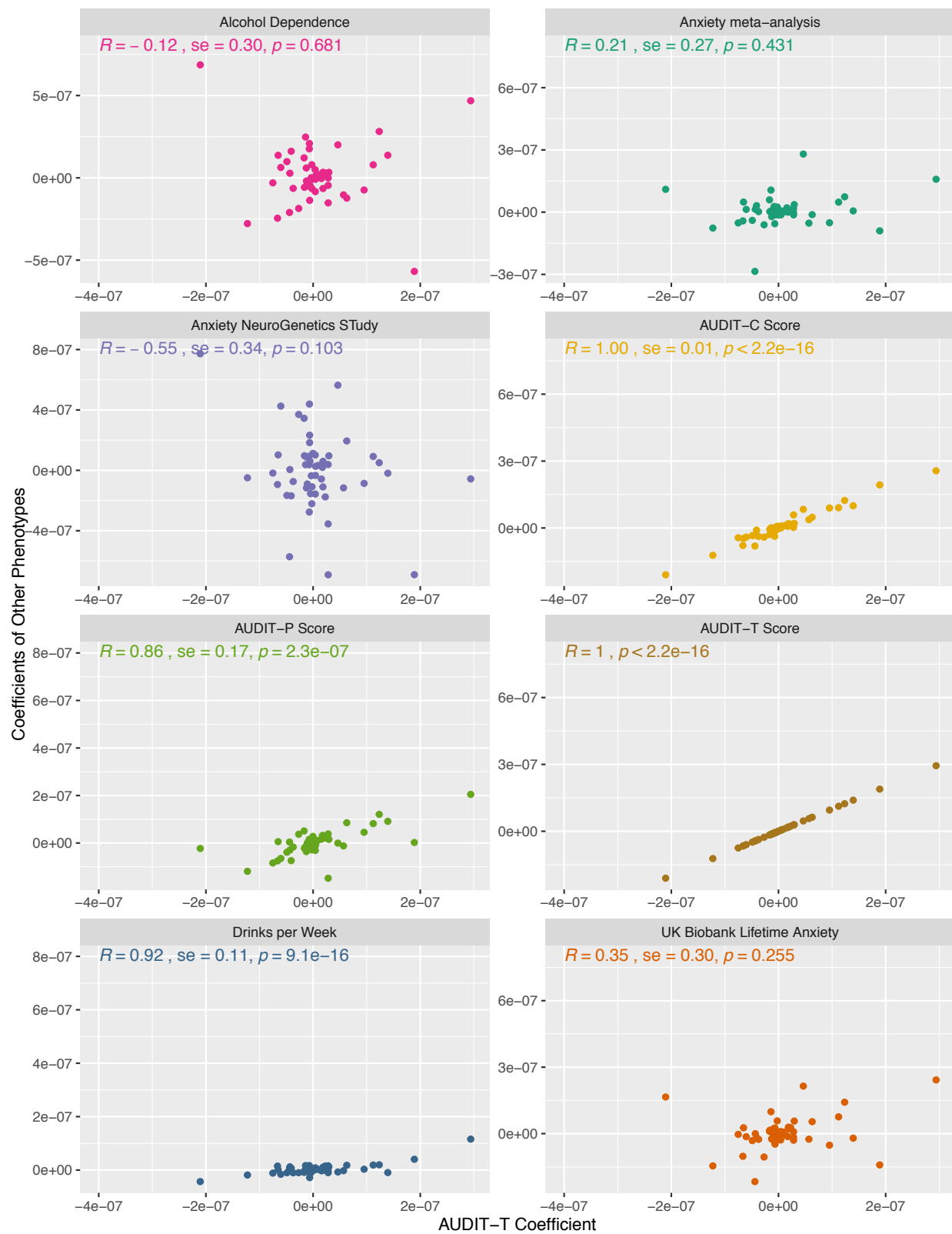


Figure S16 (f): Baseline regression coefficient correlation between AUDIT-T and other phenotypes.



Figure S16 (g): Baseline regression coefficient correlation between AUDIT-C and other phenotypes.

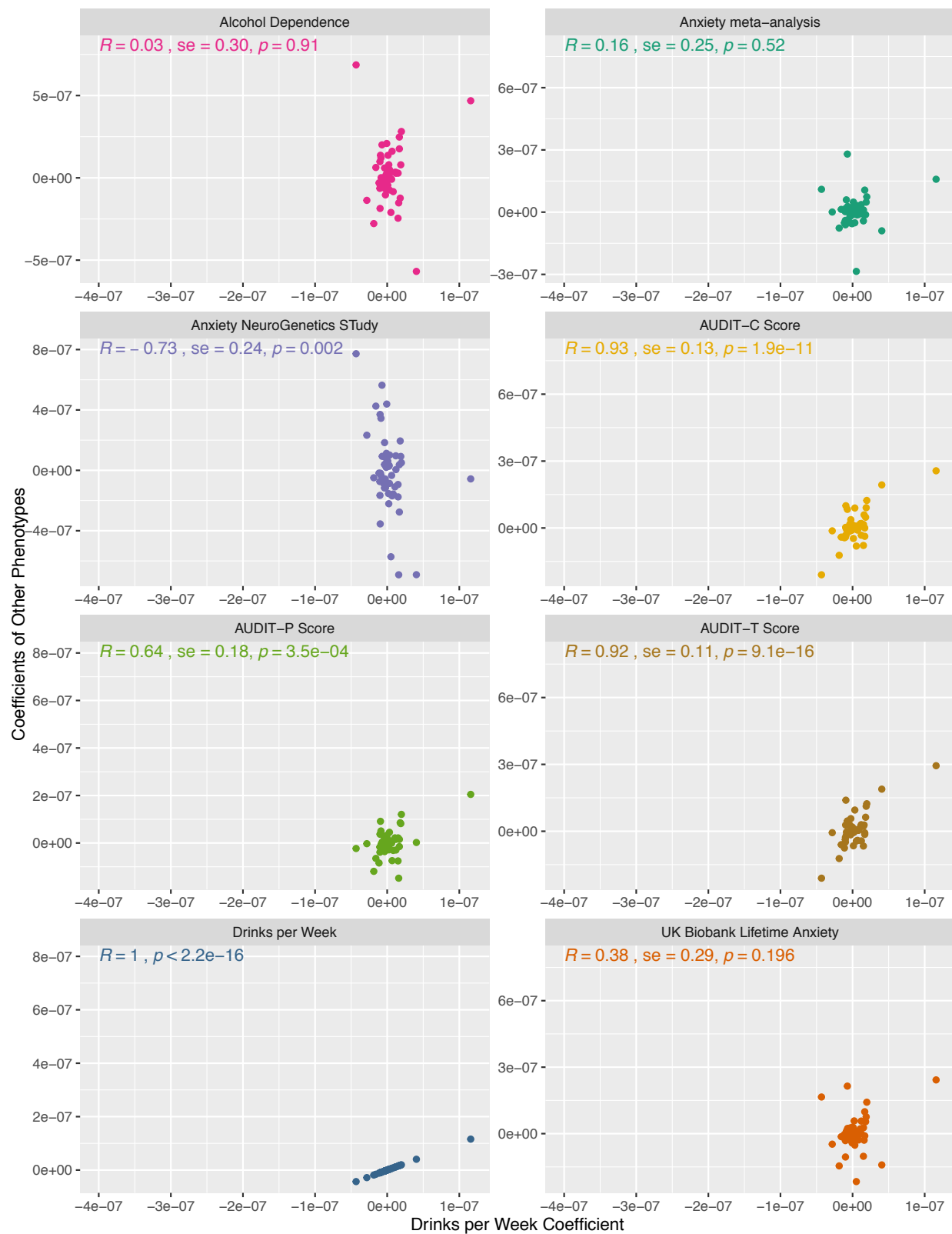


Figure S16 (h): Baseline regression coefficient correlation between drinks per week and other phenotypes.

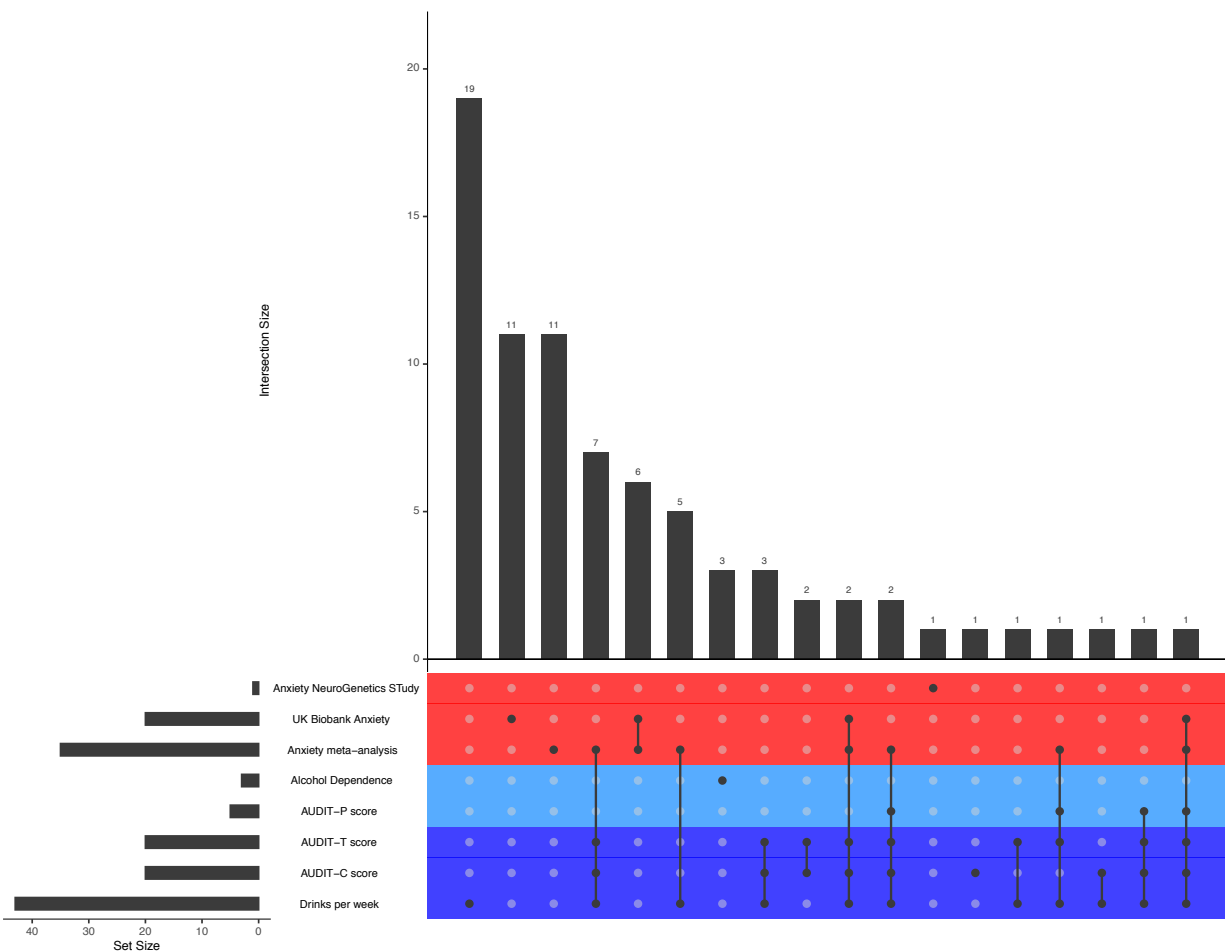


Figure S17: Plot of cell type- and tissue-specific annotations with enrichment scores that pass the FDR < 5% cutoff. The colors represent the three phenotypic categories of the sets: anxiety disorders (red), PAU (light blue) and alcohol consumption (dark blue).

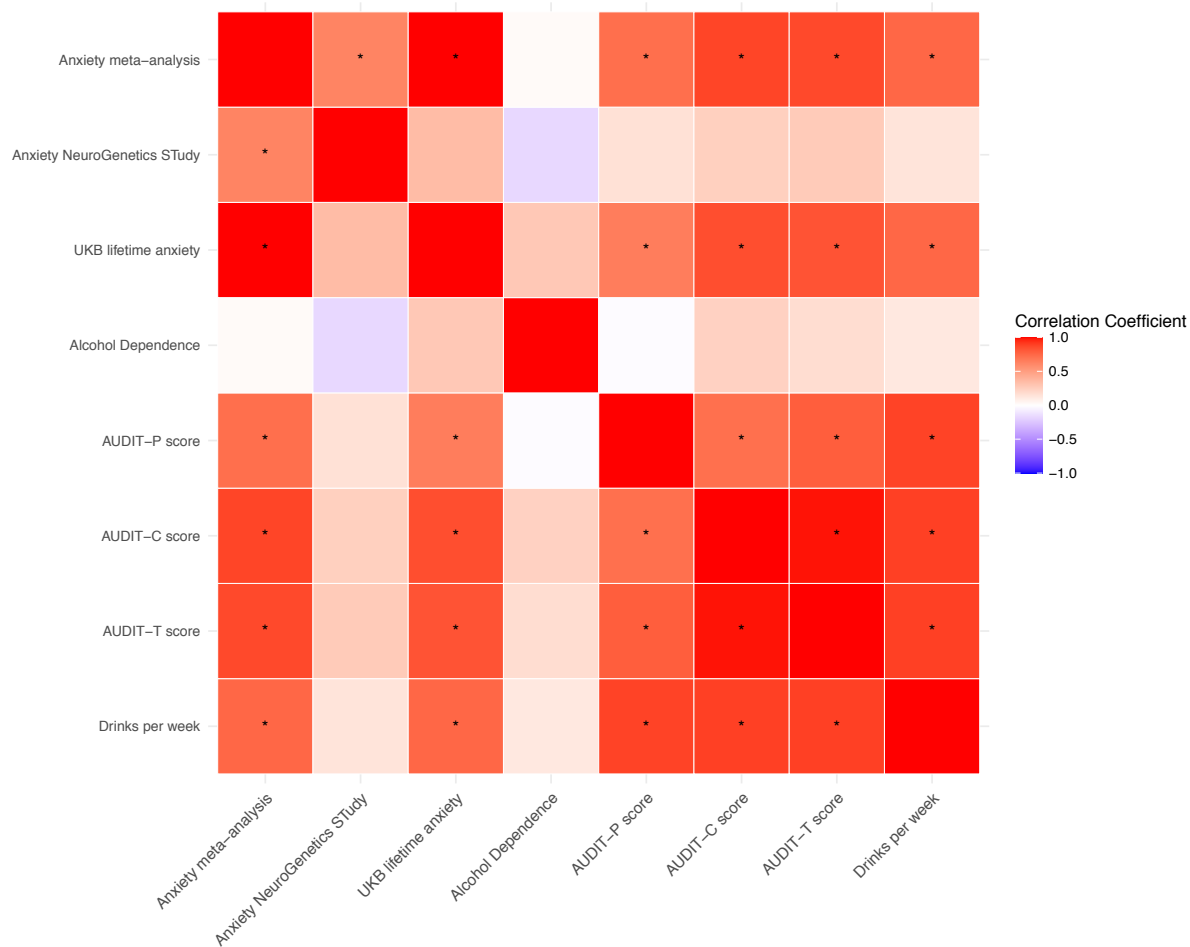


Figure S18: Estimates of correlation of LDSC regression coefficients from the cell type- and tissue-specific analysis. Asterisks indicated regression coefficient correlation estimates that pass the FDR < 5% cutoff.

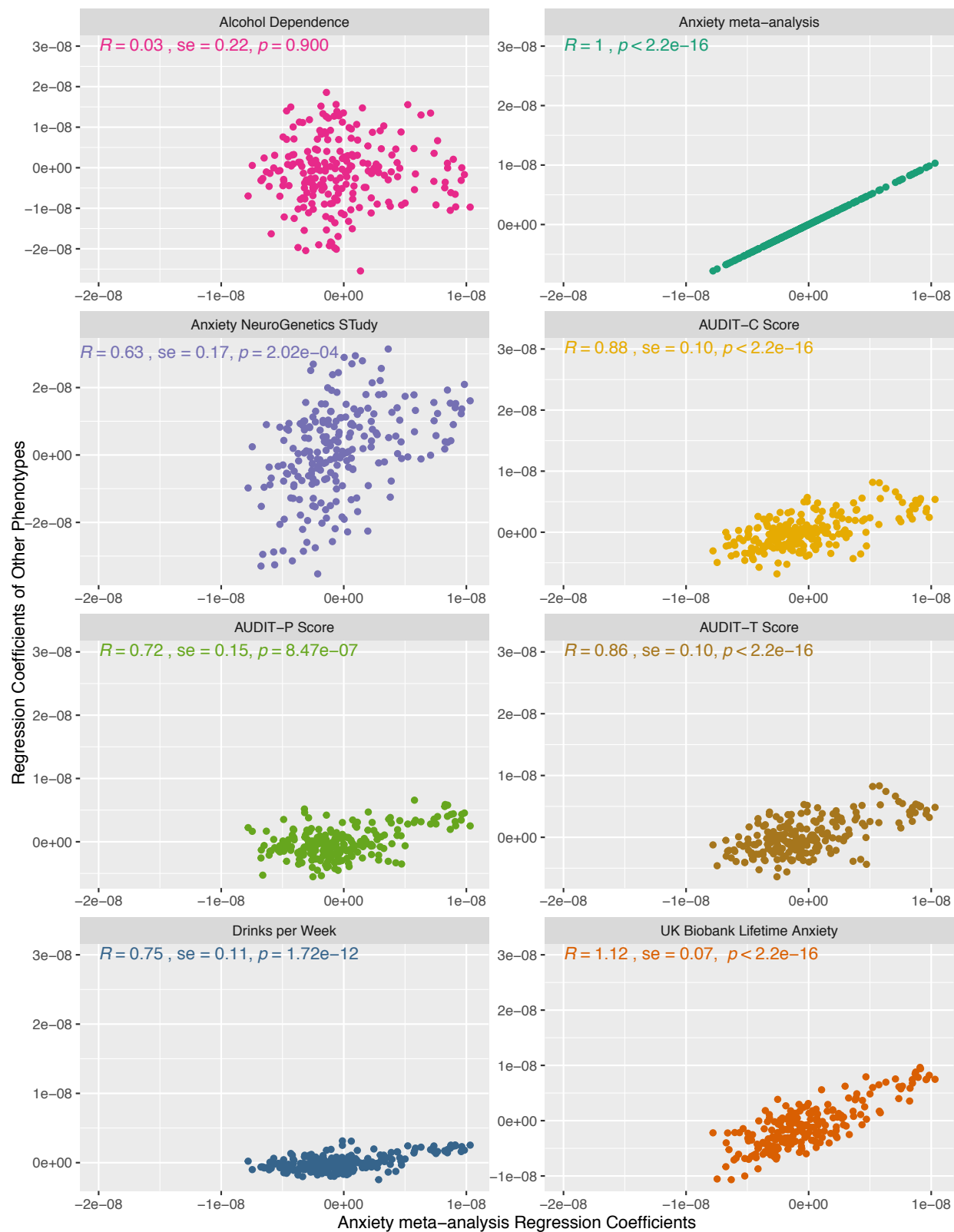


Figure S19 (a): Cell type- and tissue-specific regression coefficients correlation between anxiety meta-analysis and other phenotypes.



Figure S19 (b): Cell type- and tissue-specific regression coefficients correlation between UK Biobank lifetime anxiety and other phenotypes.

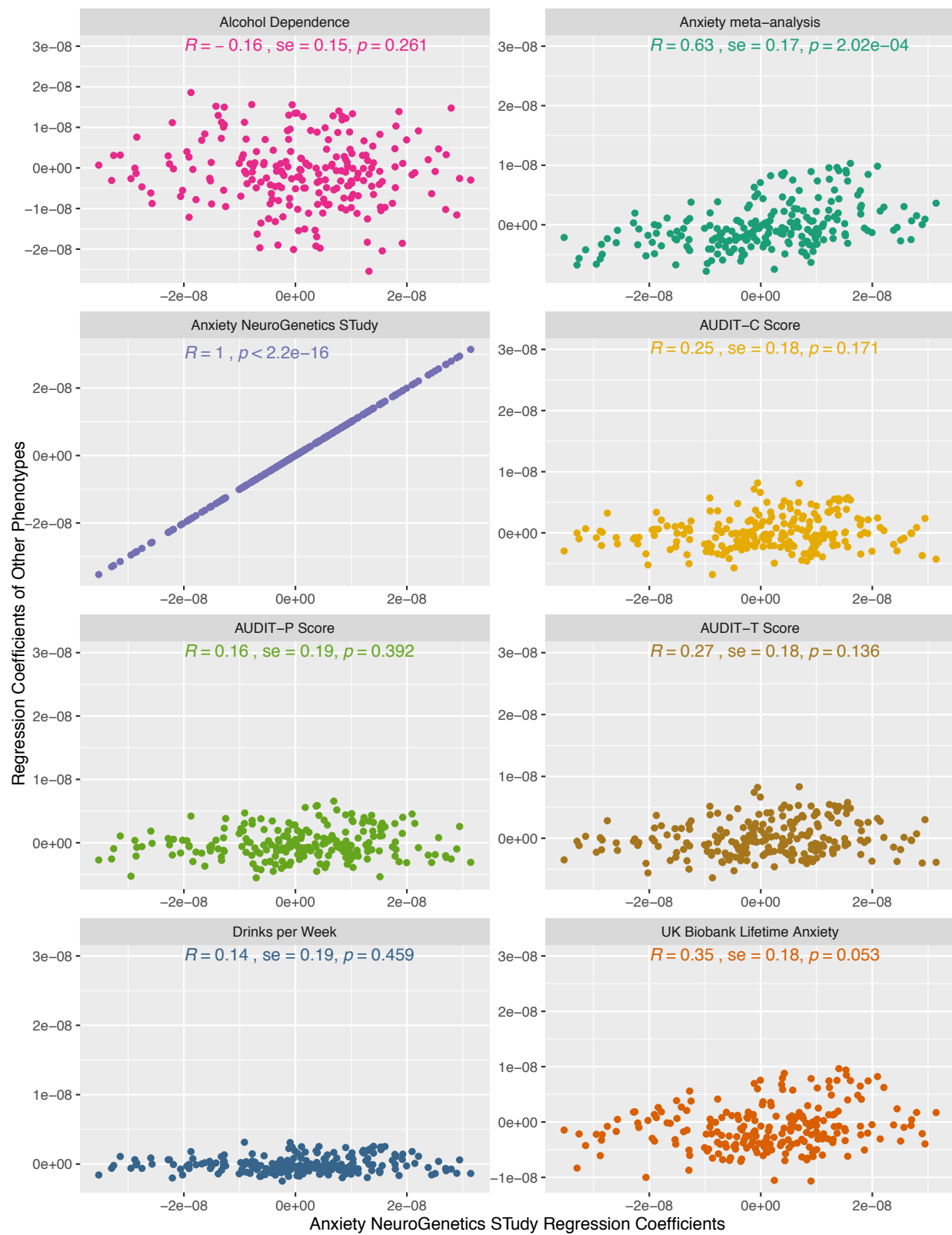


Figure S19 (c): Cell type- and tissue-specific regression coefficients correlation between ANGST and other phenotypes.



Figure S19 (d): Cell type- and tissue-specific regression coefficients correlation between alcohol dependence and other phenotypes.

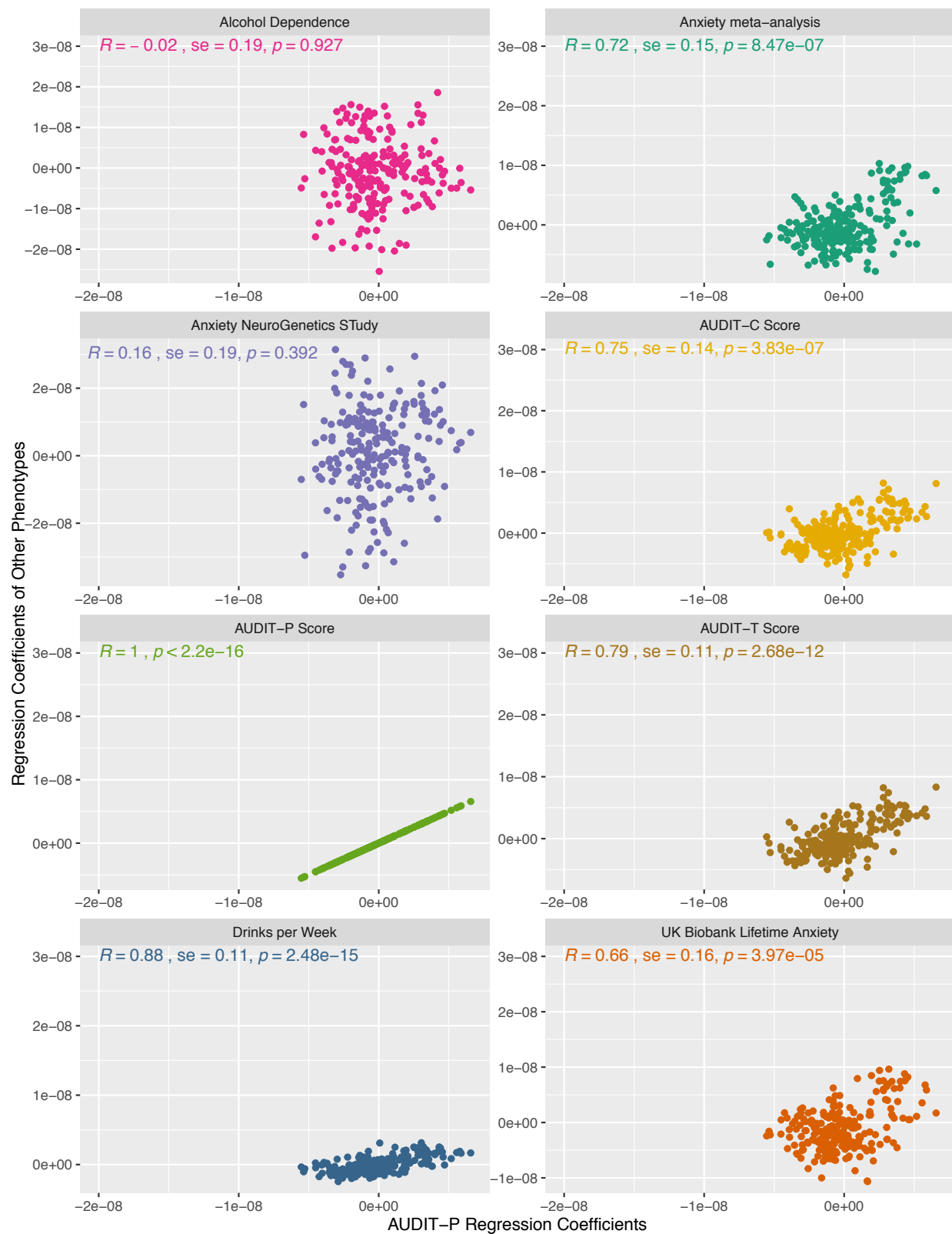


Figure S19 (e): Cell type- and tissue-specific regression coefficients correlation between AUDIT-P and other phenotypes.

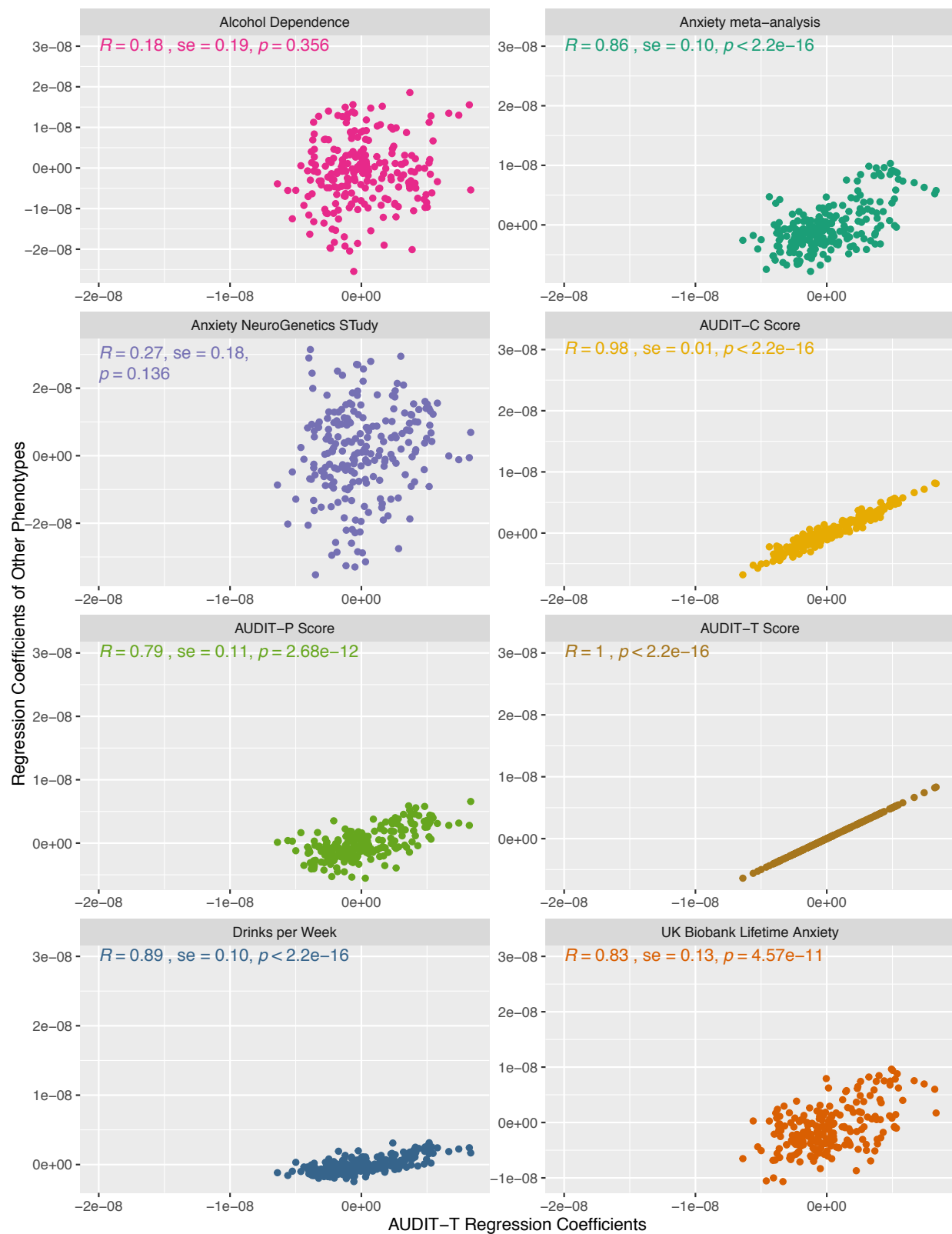


Figure S19 (f): Cell type- and tissue-specific regression coefficients correlation between AUDIT-T and other phenotypes.

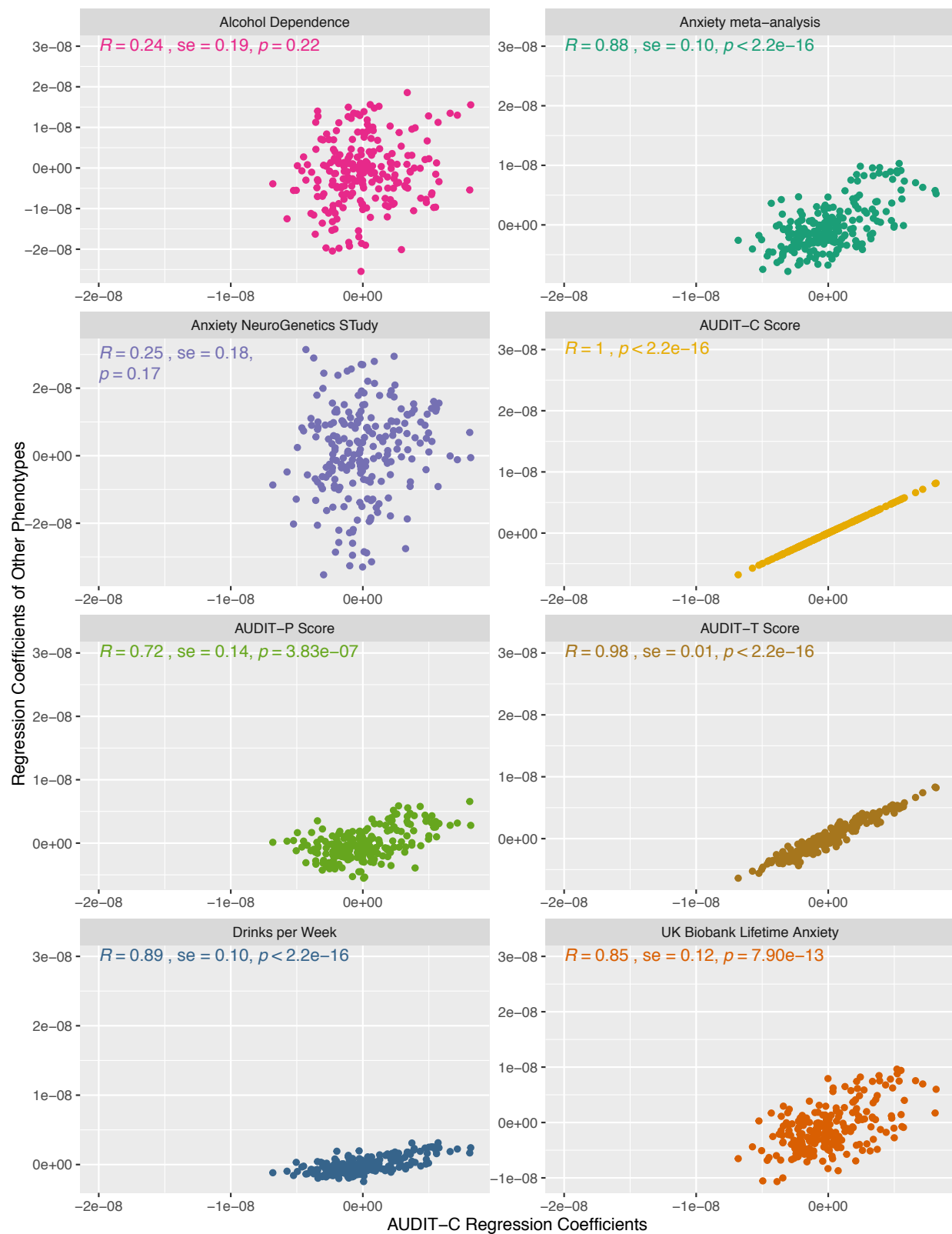


Figure S19 (g): Cell type- and tissue-specific regression coefficients correlation between AUDIT-C and other phenotypes.

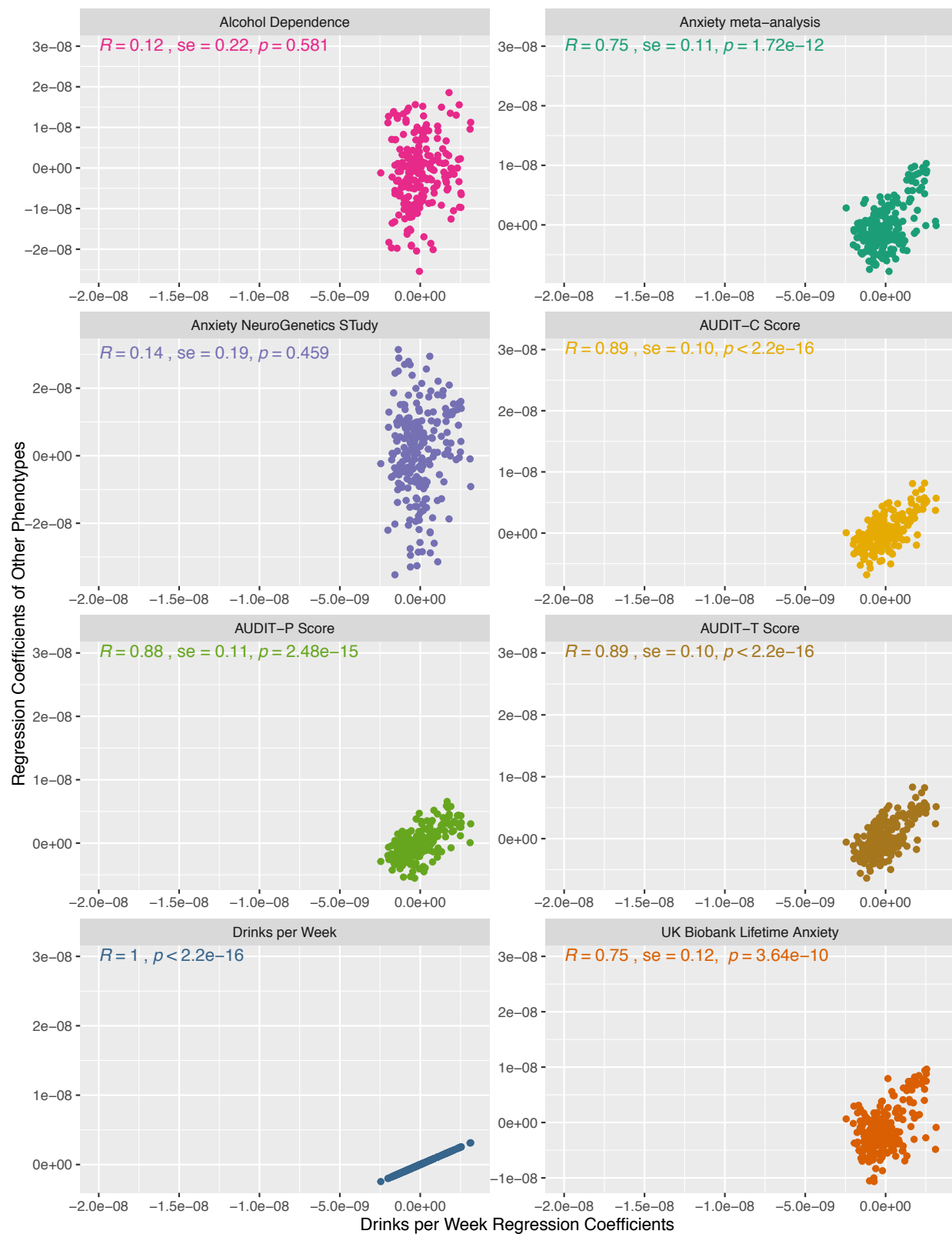


Figure S19 (h): Cell type- and tissue-specific regression coefficients correlation between drinks per week and other phenotypes.