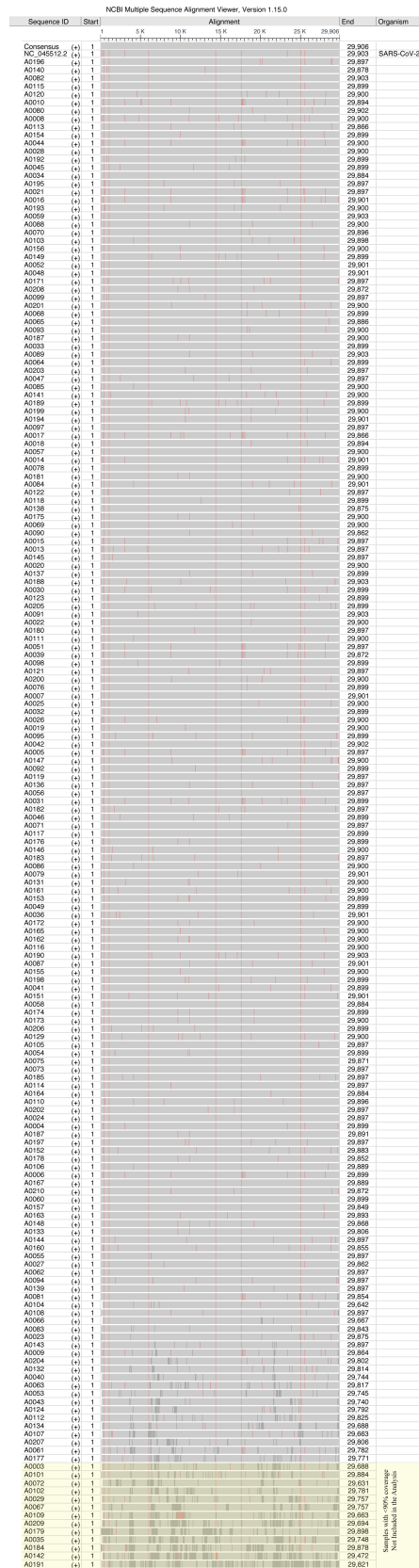


**SUPPLEMENTARY INFORMATION**

**Figure S1:** Alignment of SARS-CoV-2 sequences from NV patient's specimens.

6  
7  
8  
9  
10  
11  
12  
13  
14  
15  
16  
17  
18  
19  
20  
21  
22  
23  
24  
25  
26  
27  
28



## Figure S2. Dendrogram of Nevada specimens in context of other sequenced

specimens. (a) Nucleotide

mutation clock from

Nextstrain.org with the

SARS-CoV-2 genome

isolated from Washington

(USA/WA 1/2020) on

January 24th and first

specimen from Nevada

(A0004) on March 5th

indicated in red. (b) Circular

dendrogram of Nevada

specimens from March 6th

to June 5th positioned

within a subsample of

global sequences from

Nextstrain.org during the

same time period, the

larger dots indicate

specimens from Nevada.

The five clades are colored

19A (blue), 19B (teal), 20A (green), 20B (yellow) and 20C (orange).

Fig. S1a

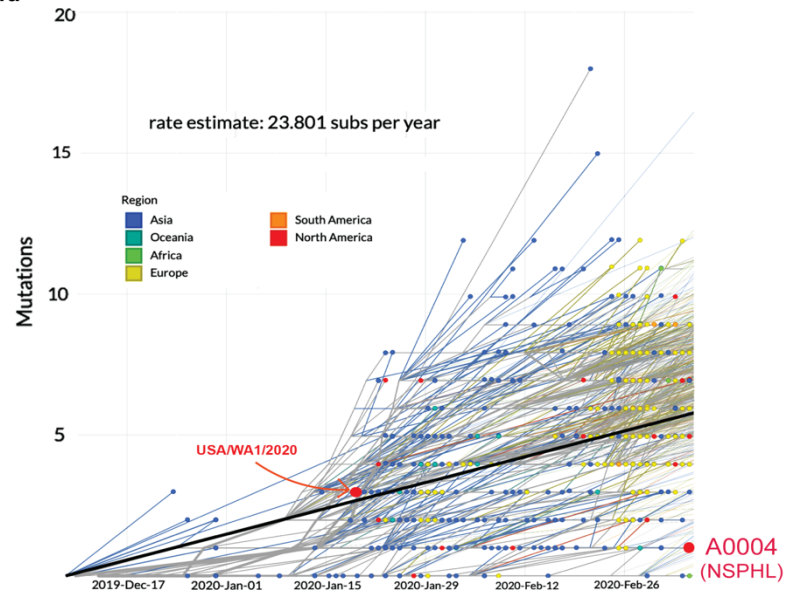
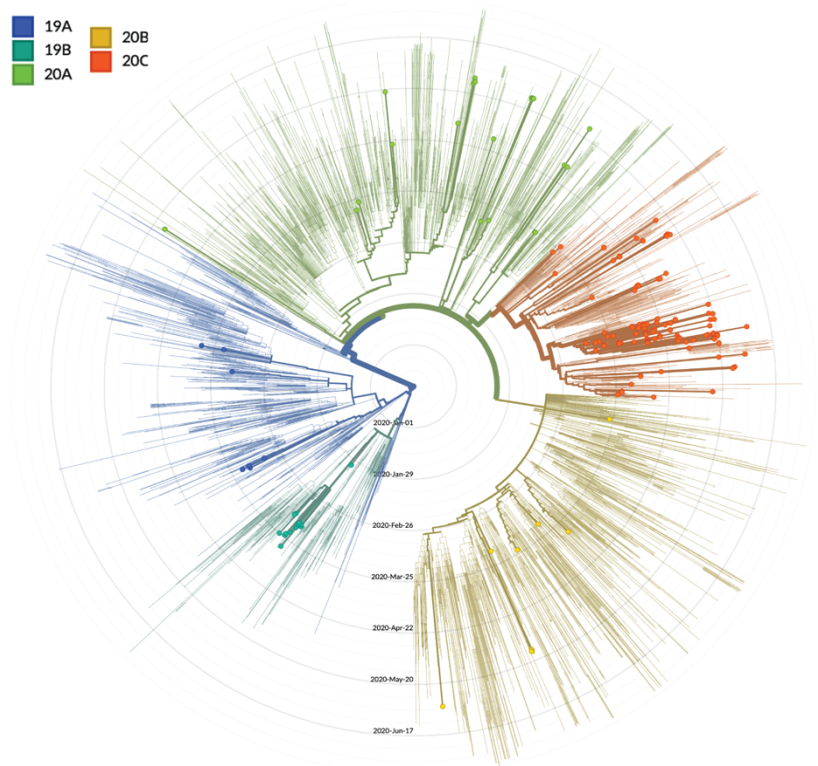


Fig. S1b



**Figure S3. Global distribution of clades from March 6th to June 5th.** Pie charts depict

the proportion of the clades within (a) four main areas in Nevada, these include

specimens from

Washoe county

(upper left), 23

specimens from

Carson-Tahoe

(middle left), 40

specimens from

Clark county

(bottom right),

and 19 from rural

Nevada

(middle). The

five clades are

colored 19A

(blue), 19B

(teal), 20A

(green), 20B

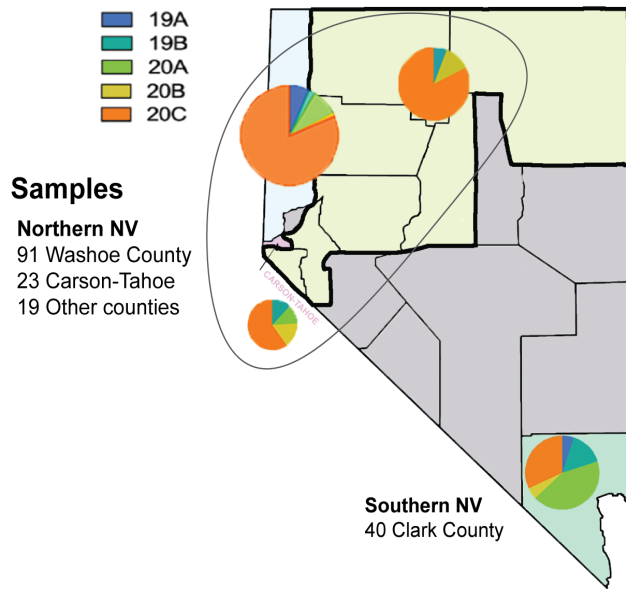
(yellow) and 20C (orange). (b) Pie chart of the clades in each indicated country from

March 6th to June 5th generated from a subsampling of sequences deposited in

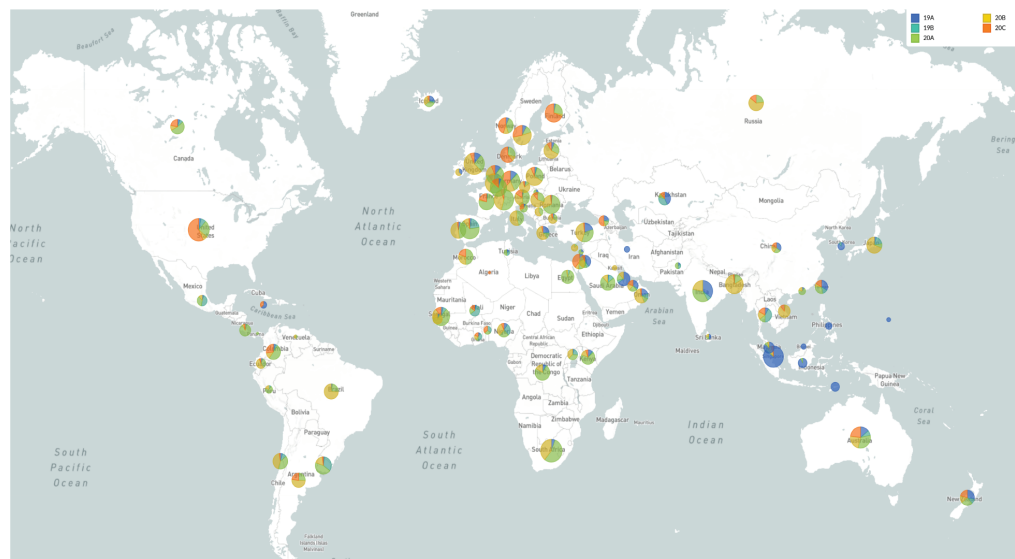
Nextstrain.org. The size of the pie chart corresponds to the relative specimen number for

each region.

**Fig. S2a**



**Fig. S2b**



**Figure S4. Distribution of nucleotide variant 379C>A.** (a) Green line at the far-left end

of the genome denoted **Fig. S3a**

nucleotide position 379 of

nsp1. (b) Circular

dendrogram of global

subsample of sequences

from Nextstrain.org with

NV specimens indicated

by larger dots. (c) Pie

chart indicating the

proportion of sequences

with either the cytidine (C)

or adenosine (A) at

position 379 from the

Nevada specimens.

Subsample of sequences

from Nextstrain.org were

used to generate the

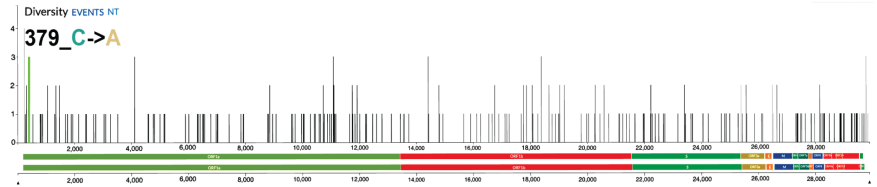
proportion of 379C>A in

(d) the indicated states

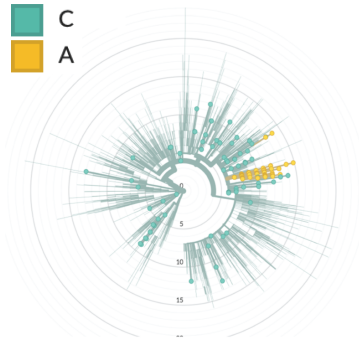
within the U.S. and (e)

internationally. The size of the pie chart corresponds to the relative specimen number for

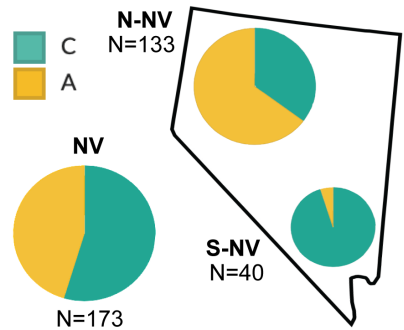
each region.



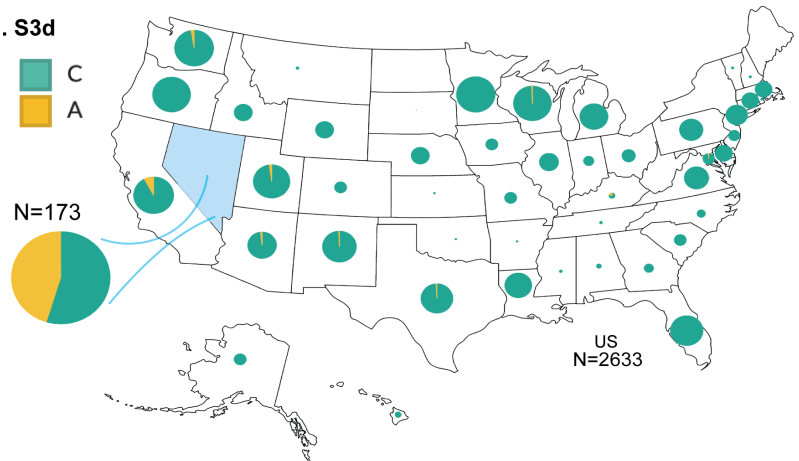
**Fig. S3b**



**Fig. S3c**



**Fig. S3d**



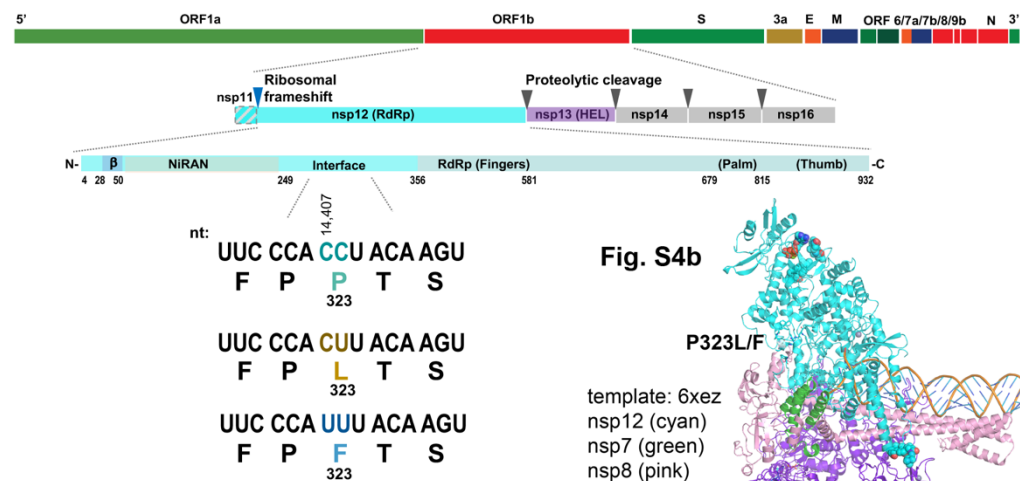
**Fig. S3e**



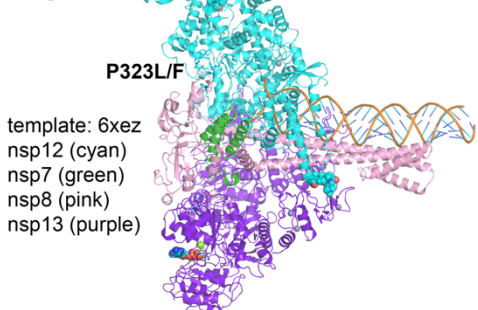


**Figure S5. Structure of SARS-CoV-2 nsp12 (RdRp) P323L/F.** (a) Diagram depicting

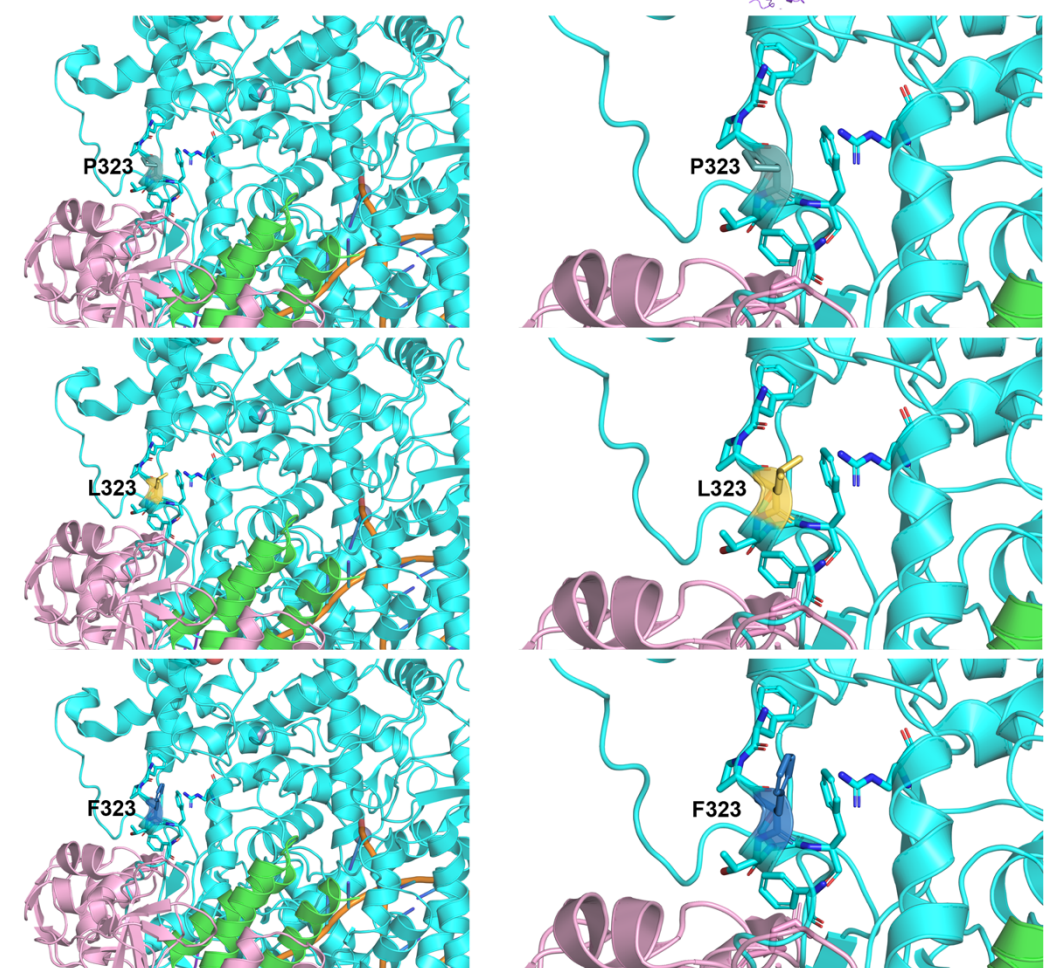
**Fig. S4a**



**Fig. S4b**



**Fig. S4c**



121 modeled from 6XEZ template. This model includes nsp12, nsp7, nsp8, nsp13, ligands  
122 (ZN, Mg), the template and product strand of RNA. P323L/F within the interface domain  
123 of nsp12 is located at the left side of the complex. (c) Model nsp12 showing P323L/F  
124 within the interface domain. Residue 323 is shown with either P, L or F and amino  
125 acids with side chains within 5 Å of residue 323 are depicted as sticks in the cartoon  
126 model.  
127