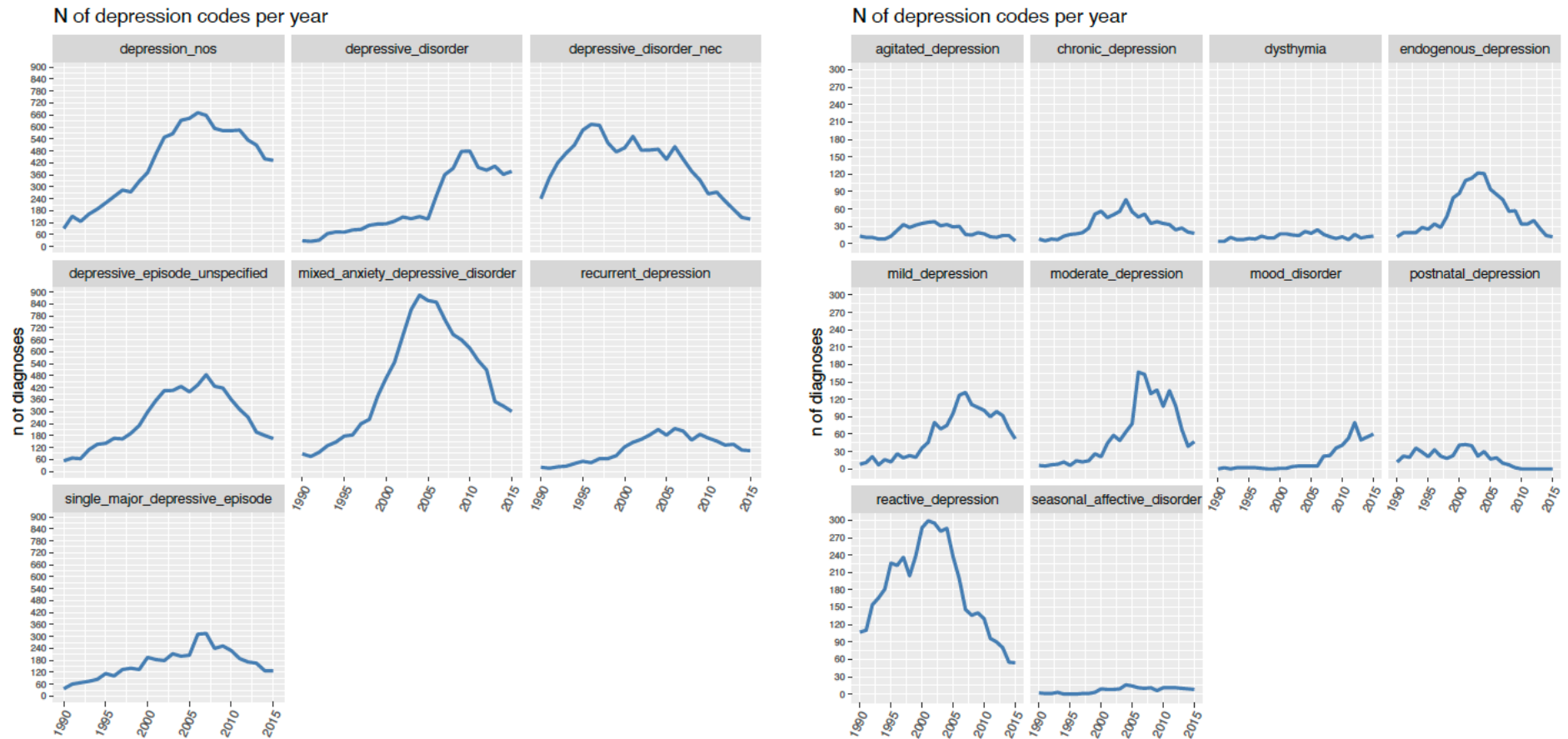


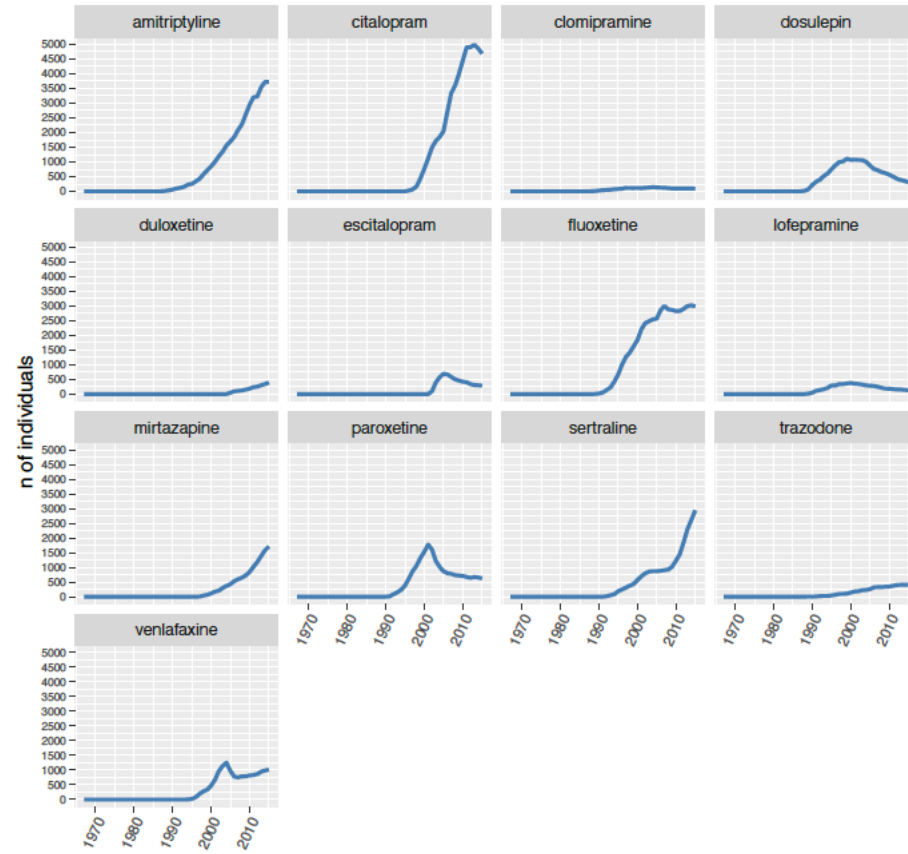
**Supplementary Figure 1:** number of diagnostic codes for depressive disorders (only codes reported > 100 times were represented) **(A)** and number of individuals receiving antidepressant prescriptions by drug (only drugs prescribed to > 1000 individuals) **(B)** and drug class **(C)** in UKB.

**A**



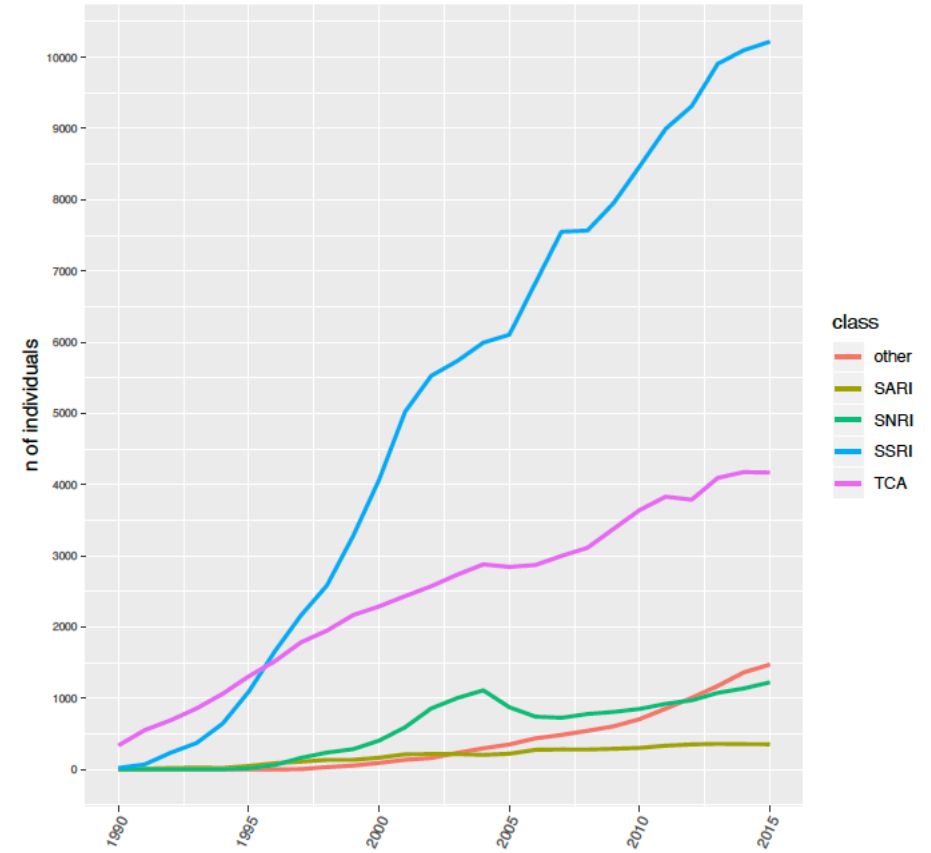
**B**

N of individuals per year: antidepressants

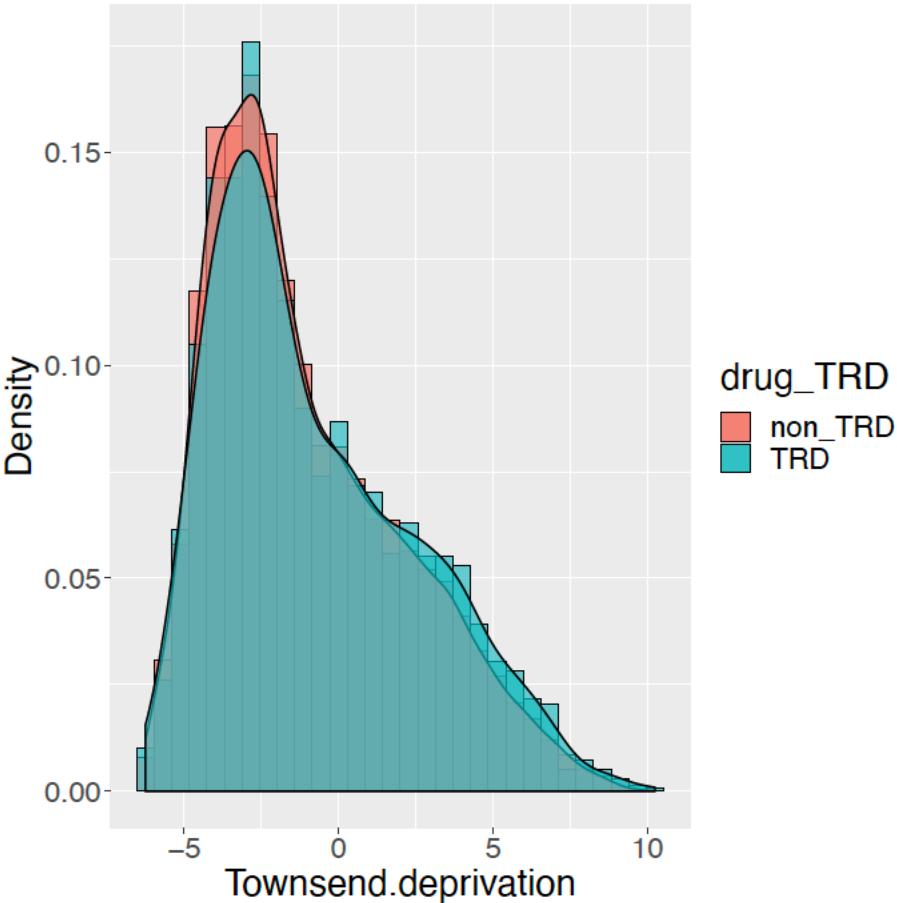


**C**

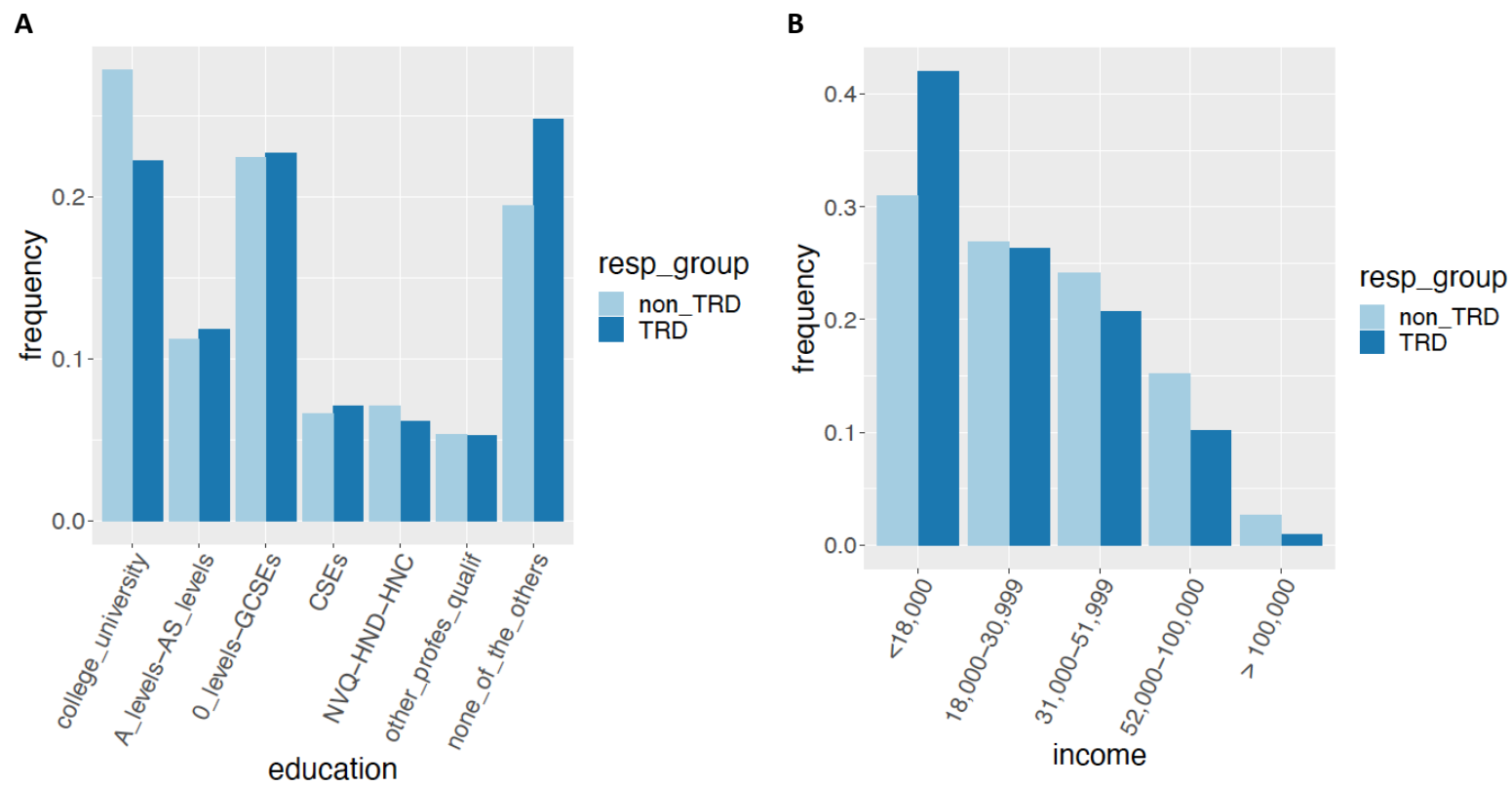
N of individuals per year: antidepressant classes



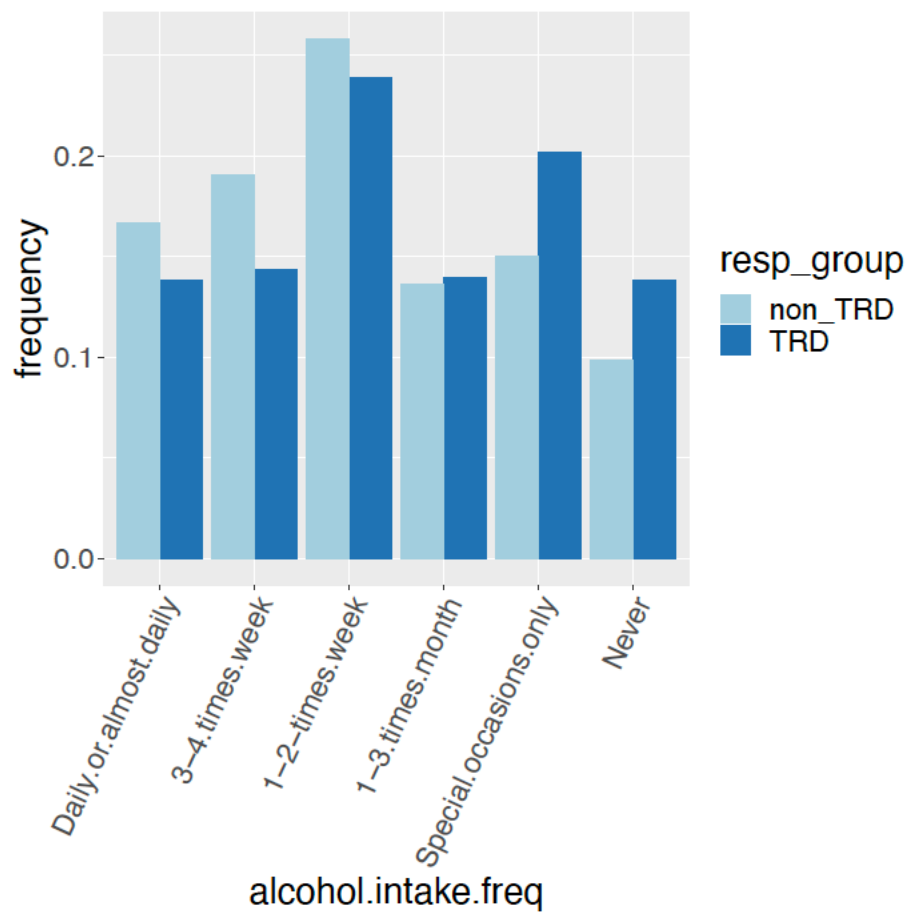
**Supplementary Figure 2:** representation of the townsend social deprivation index at recruitment in UKB. Each participant is assigned a score corresponding to the output area in which their postcode is located. Higher scores indicate higher social deprivation.



**Supplementary Figure 3:** distribution of education (A) and average household income (£) (B) categories in people with TRD vs. non-TRD in UKB.

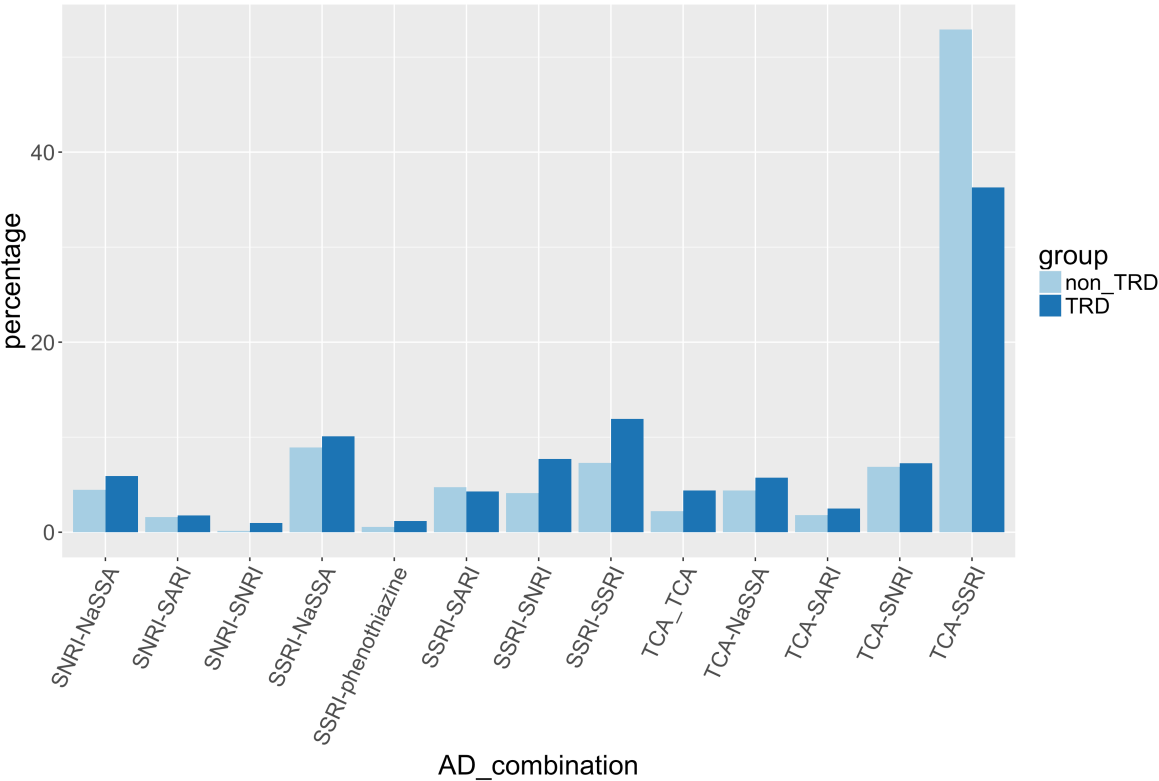


**Supplementary Figure 4:** frequency of alcohol intake in people with TRD vs. non-TRD in UKB.

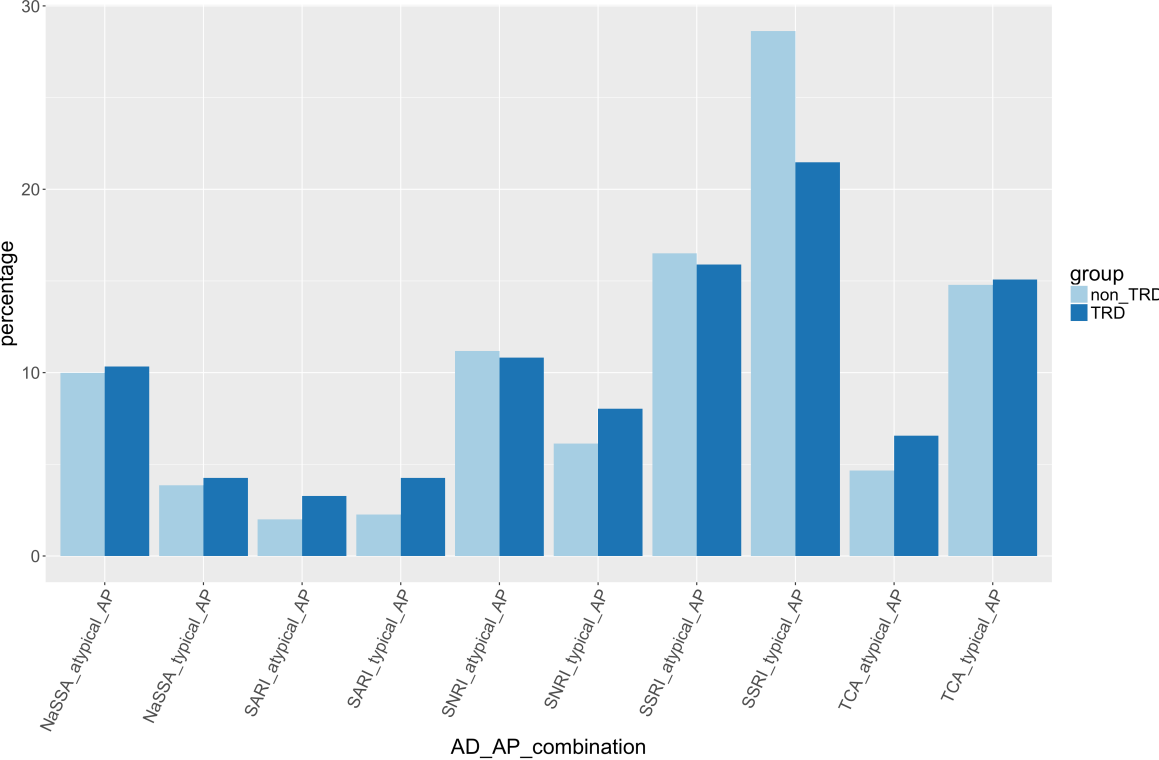


**Supplementary Figure 5:** frequency of antidepressant (AD) combinations (A), antidepressant augmentation with an antipsychotic (AP) (B) and a mood stabilizer (MS) (C) grouped by drug class between participants with treatment-resistant depression (TRD) and non-TRD in UKB. In TRD and non-TRD groups, the percentage of subjects receiving each combination is reported considering the total number of individuals receiving any antidepressant combination (A), antidepressant-antipsychotic (B) or antidepressant-mood stabilizer (C) combination.

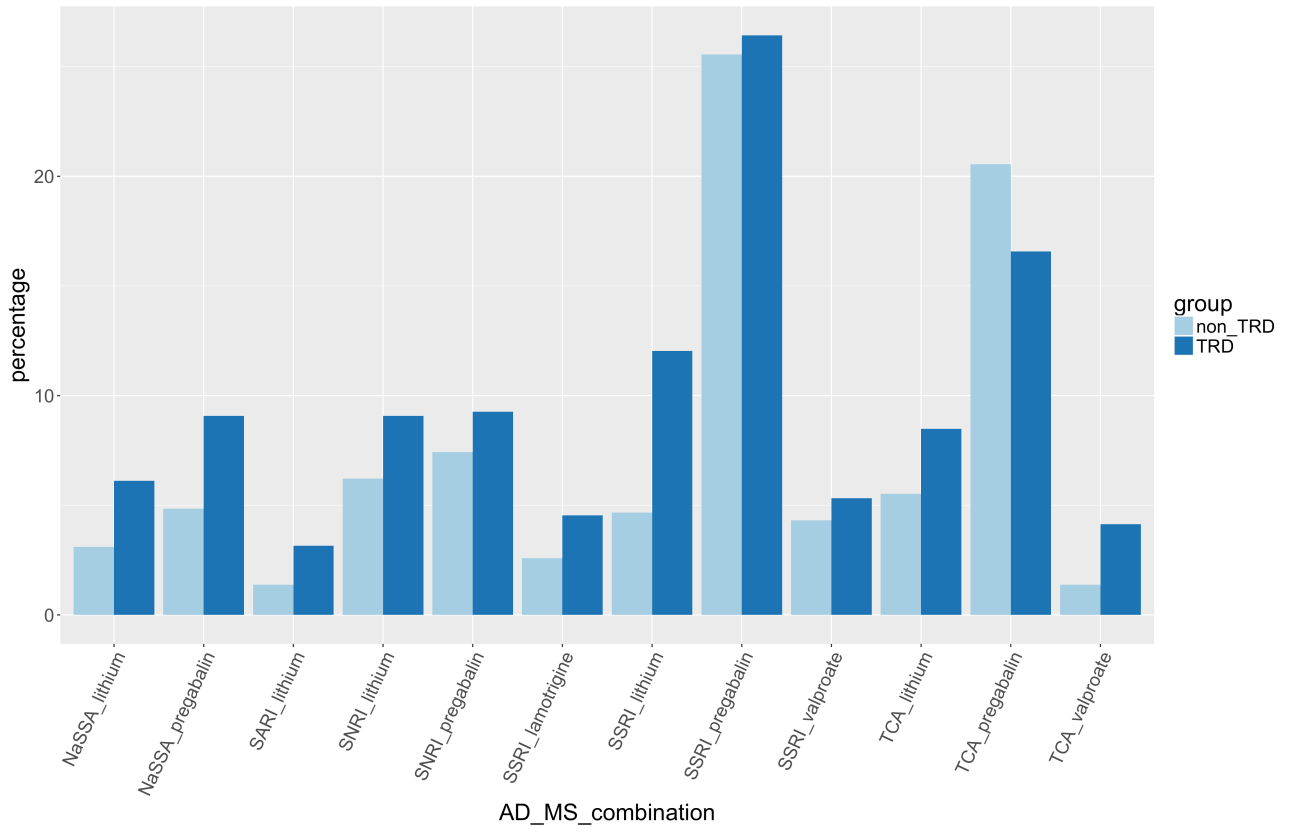
A



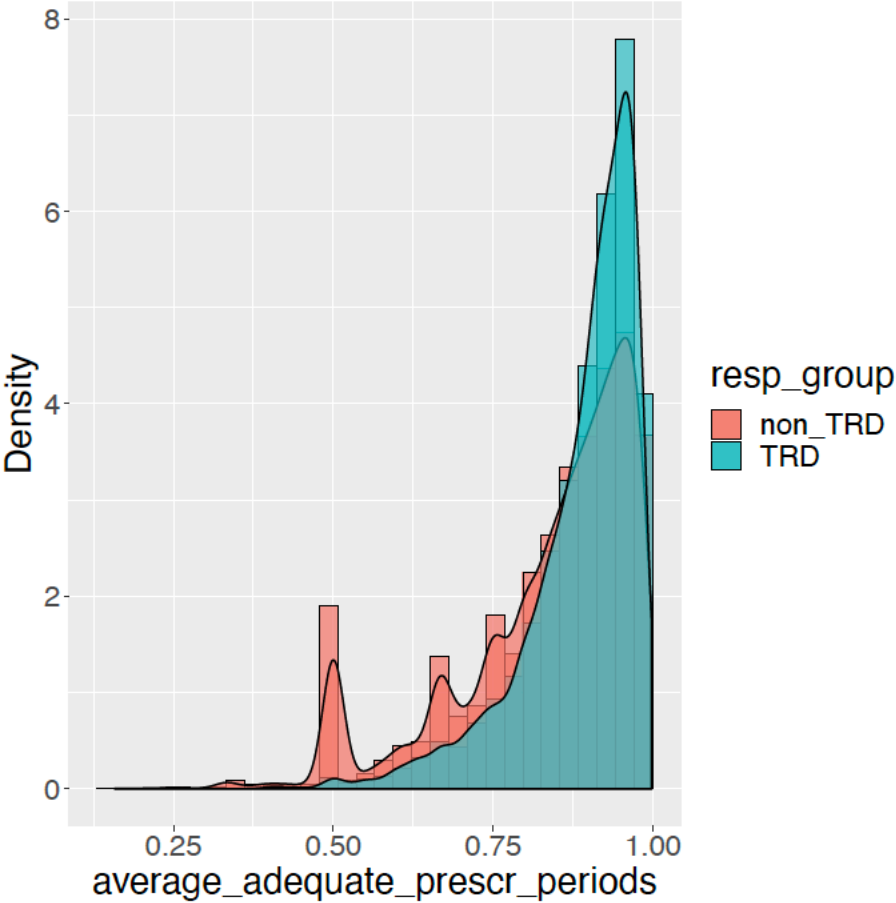
B



**c**

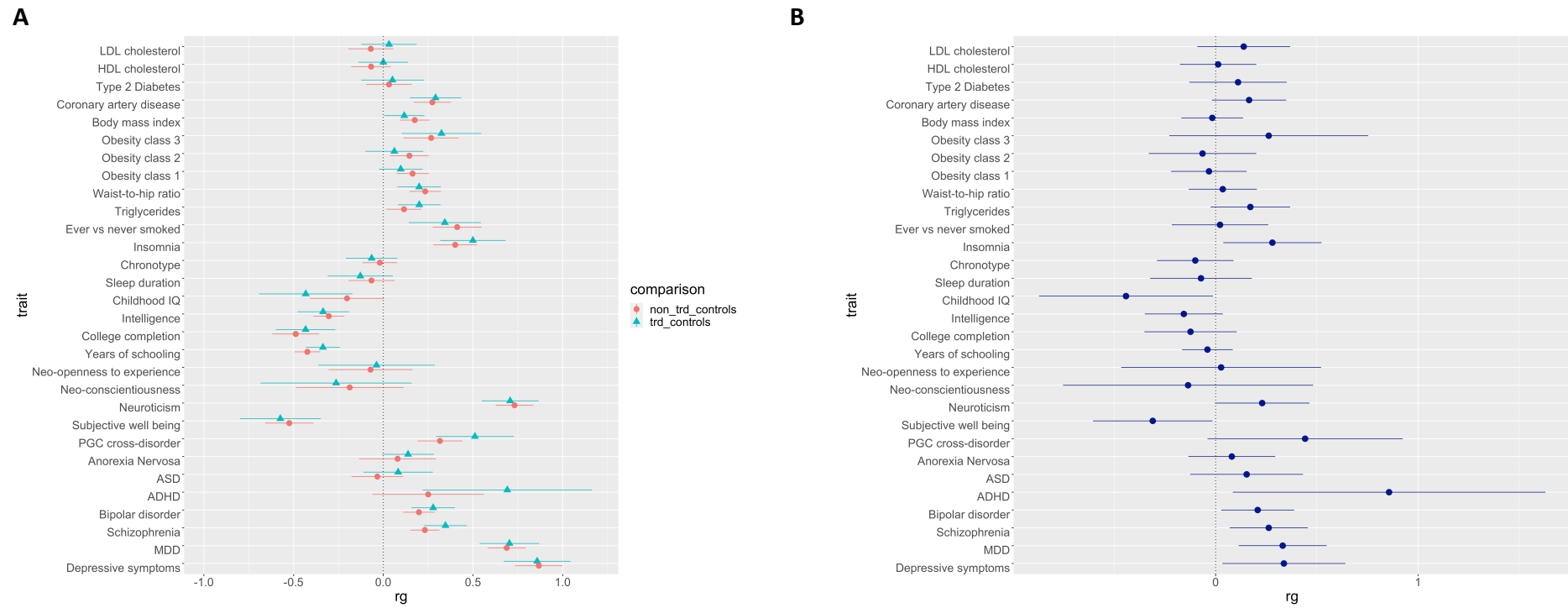


**Supplementary Figure 6:** distribution of prescription periods of adequate duration / total prescription periods in each subject split between TRD and non-TRD in UKB. A prescription period was defined adequate when the time between two subsequent antidepressant prescriptions was not longer than 14 weeks.

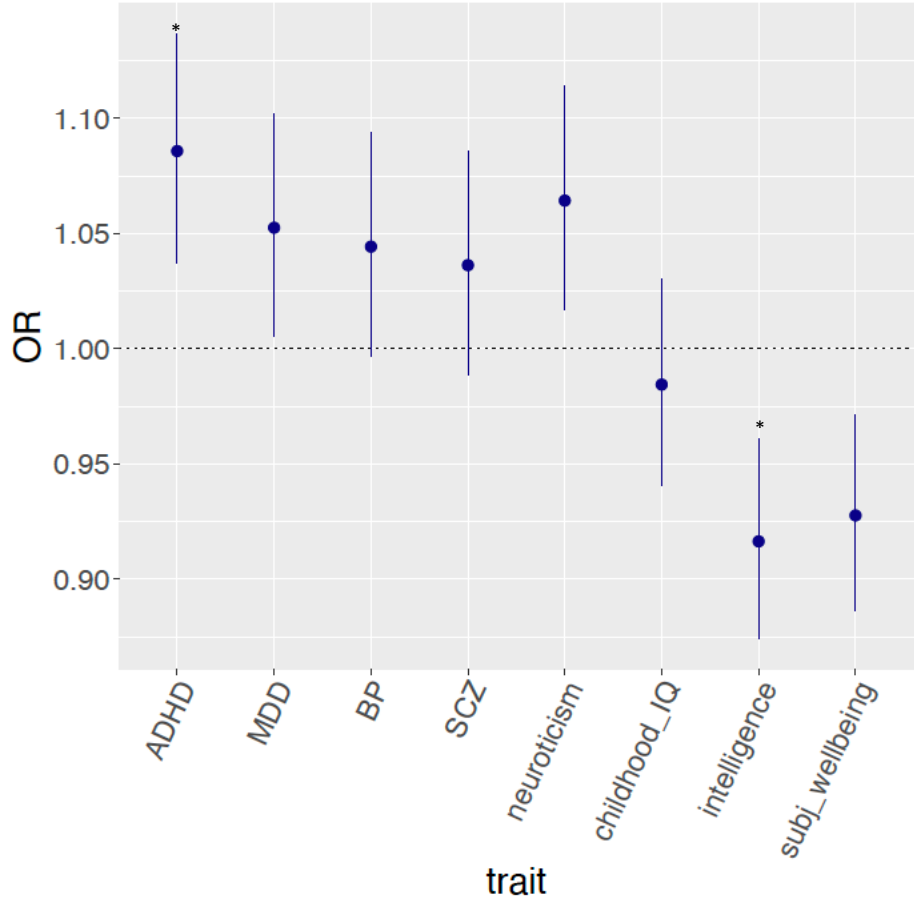




**Supplementary Figure 7:** genetic correlations of TRD and non-TRD vs. healthy controls **(A)** and TRD vs. non-TRD defined in UKB **(B)** with 30 psychiatric, cognitive, circadian and cardio-metabolic traits.



**Supplementary Figure 8:** OR of PRS and 95% confidence intervals in the prediction of TRD vs. non-TRD in UKB. \*  $p < 0.00058$  (Bonferroni corrected p value).



**Supplementary Figure 9:** PRS results at different p thresholds for attention-deficit hyperactivity disorder (A) and intelligence (B) in UKB. P-values at the different p thresholds are reported at the top of each column.

