

Supplementary data: Proteomic signatures of perioperative oxygen delivery in skin after major surgery.

Gareth L. Ackland PhD FRCA FFICM,¹ Emily Bliss PhD,² Fatima Bahelil BSc,¹ Trinda Cyrus MSc,³ Marilena Crescente,⁴ Timothy Jones FRCS,¹ Sadaf Iqbal BSc,⁵ Laura Gallego Paredes BSc,⁵ Andrew J. Toner FRCA,⁶ Wendy E. Heywood PhD,² Ana Gutierrez del Arroyo PhD,¹ Edel O'Toole PhD FRCP,⁷ Kevin Mills PhD²

1. Contents

2. Inclusion/exclusion criteria for POM-O RCT (ISRCTN76894700).	3
3. Adherence to ARRIVE guidelines.	4
5. Supplementary figure 1. Interactome for differentially expressed proteins after surgery..	6
6. Supplementary figure 2. Biological processes as defined by GO pathway enrichment (false-discovery rate <0.01) involving differential expression of proteins after surgery.	7
7. Supplementary figure 3. Molecular functions (false-discovery rate <0.01) identified by GO molecular function enrichment for proteins differentially expressed after surgery.	9
8. Supplementary figure 4. REACTOME pathways (false-discovery rate <0.01) identified enriched by proteins differentially expressed after surgery.	10
9. Supplementary figure 5. Individual protein expression levels between achievers and non-achievers before and after surgery.	11
10. Supplementary Figure 6. Summary data for MnSOD expression semi-quantified by immunoblot in postoperative skin biopsy samples.	12
11. Supplementary Figure 7: Heatmap for proteins altered after surgery in patients where preoperative DO2 was achieved.	13
12. Supplementary Figure 8: Heatmap for proteins altered after surgery in patients where preoperative DO2 was not achieved.	14
13. Supplementary Figure 9. IPA molecular pathologic pathways.	15
14. Supplementary Figure 10. Example of uncropped immunoblot from mouse liver resection surgery model.	16
15. Supplementary Figure 11: IHC protocols for CD44 and ITAG6	17

2. Inclusion/exclusion criteria for POM-O RCT (ISRCTN76894700).

Inclusion criteria:

Surgery expected to last for at least 120 min were eligible for recruitment provided they satisfied the following high-risk criteria: American Society of Anesthesiologists classification of 3 or more; surgical procedures with an estimated or documented risk of postoperative morbidity (as defined by the Postoperative Morbidity Survey) exceeding 50%; modified Revised Cardiac Risk Score of 3 or more, as defined by age 70 years or more, a history of cardiovascular disease (myocardial infarction, coronary artery disease, cerebrovascular accident, electrocardiographic evidence for established cardiac pathology), cardiac failure, poor exercise capacity (anaerobic threshold <11 mL/kg per min assessed by cardiopulmonary exercise testing or Duke Activity Status Index), renal impairment (serum creatinine ≥ 130 $\mu\text{mol/L}$), or diabetes.

Exclusion criteria:

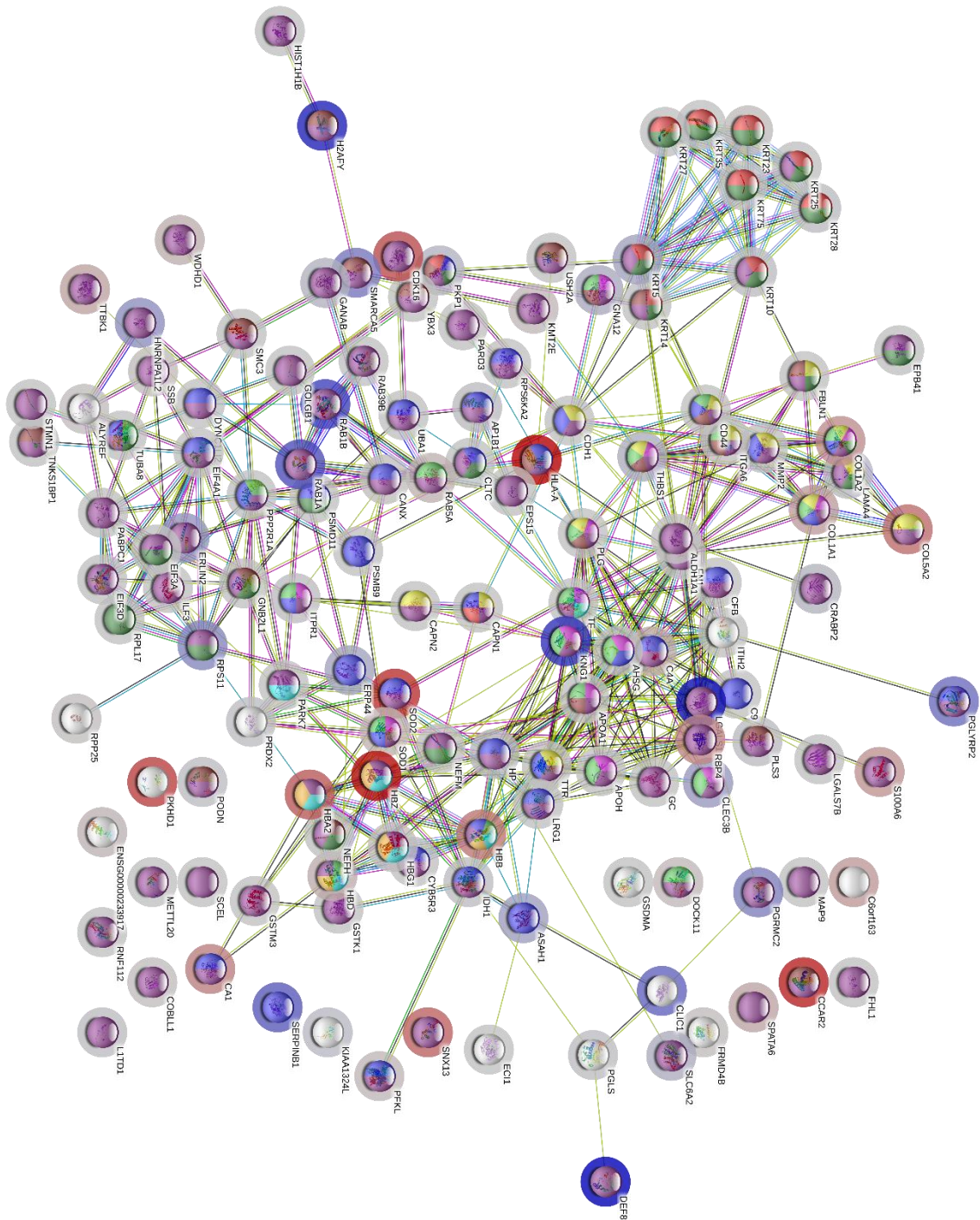
Refusal of consent, pregnancy, lithium therapy or allergy, recent myocardial ischaemia (within the previous 30 days), acute arrhythmia, acute bleeding, and patients receiving palliative treatment only.

3. Adherence to ARRIVE guidelines.

ITEM		RECOMMENDATION	Section/ Paragraph
Title	1	Provide as accurate and concise a description of the content of the article as possible.	Page 1
Abstract	2	Provide an accurate summary of the background, research objectives, including details of the species or strain of animal used, key methods, principal findings and conclusions of the study.	Page 2
INTRODUCTION			
Background	3	a. Include sufficient scientific background (including relevant references to previous work) to understand the motivation and context for the study, and explain the experimental approach and rationale. b. Explain how and why the animal species and model being used can address the scientific objectives and, where appropriate, the study's relevance to human biology.	Page 4
Objectives	4	Clearly describe the primary and any secondary objectives of the study, or specific hypotheses being tested.	Page 4-5
METHODS			
Ethical statement	5	Indicate the nature of the ethical review permissions, relevant licences (e.g. Animal [Scientific Procedures] Act 1986), and national or institutional guidelines for the care and use of animals, that cover the research.	Page 7
Study design	6	For each experiment, give brief details of the study design including: a. The number of experimental and control groups. b. Any steps taken to minimise the effects of subjective bias when allocating animals to treatment (e.g. randomisation procedure) and when assessing results (e.g. if done, describe who was blinded and when). c. The experimental unit (e.g. a single animal, group or cage of animals). A time-line diagram or flow chart can be useful to illustrate how complex study designs were carried out.	Page 7-10
Experimental procedures	7	For each experiment and each experimental group, including controls, provide precise details of all procedures carried out. For example: a. How (e.g. drug formulation and dose, site and route of administration, anaesthesia and analgesia used [including monitoring], surgical procedure, method of euthanasia). Provide details of any specialist equipment used, including supplier(s). b. When (e.g. time of day). c. Where (e.g. home cage, laboratory, water maze). d. Why (e.g. rationale for choice of specific anaesthetic, route of administration, drug dose used).	Page 7-10

Experimental animals	8	<p>a. Provide details of the animals used, including species, strain, sex, developmental stage (e.g. mean or median age plus age range) and weight (e.g. mean or median weight plus weight range).</p> <p>b. Provide further relevant information such as the source of animals, international strain nomenclature, genetic modification status (e.g. knock-out or transgenic), genotype, health/immune status, drug or test naïve, previous procedures, etc.</p>	Page 7-10
----------------------	---	---	-----------

number of nodes: 137 number of edges:425
average node degree: 6.2 avg. local clustering coefficient:0.505
expected number of edges: 181
PPI enrichment p-value: < 1.0e-16



6. Supplementary figure 2. Biological processes as defined by GO pathway enrichment

(false-discovery rate <0.01) involving differential expression of proteins after

surgery.

GO ID	Description	Observed	Total	FDR
GO:0006887	exocytosis	26	774	7.12E-08
GO:0032940	secretion by cell	29	959	7.12E-08
GO:0045055	regulated exocytosis	25	691	7.12E-08
GO:0016192	vesicle-mediated transport	37	1699	2.93E-07
GO:0070268	cornification	11	112	4.85E-07
GO:0043588	skin development	17	373	8.04E-07
GO:0051234	establishment of localization	61	4248	9.87E-07
GO:0009987	cellular process	128	14652	5.43E-06
GO:0006810	transport	58	4130	6.09E-06
GO:1990748	cellular detoxification	9	90	8.09E-06
GO:0044403	symbiont process	20	650	1.01E-05
GO:0002576	platelet degranulation	10	129	1.09E-05
GO:0009913	epidermal cell differentiation	14	306	1.09E-05
GO:0044419	interspecies interaction between organisms	21	724	1.09E-05
GO:0009611	response to wounding	18	547	1.37E-05
GO:0051179	localization	66	5233	1.37E-05
GO:0002446	neutrophil mediated immunity	17	498	1.71E-05
GO:0042119	neutrophil activation	17	497	1.71E-05
GO:0002443	leukocyte mediated immunity	19	632	1.77E-05
GO:0002252	immune effector process	23	927	2.08E-05
GO:0043062	extracellular structure organization	14	339	2.20E-05
GO:0007596	blood coagulation	13	288	2.25E-05
GO:0015671	oxygen transport	5	15	2.30E-05
GO:0008544	epidermis development	15	403	2.34E-05
GO:0030198	extracellular matrix organization	13	296	2.45E-05
GO:0016043	cellular component organization	64	5163	2.75E-05
GO:0098869	cellular oxidant detoxification	8	86	2.75E-05
GO:0002366	leukocyte activation involved in immune response	18	616	3.71E-05
GO:0043312	neutrophil degranulation	16	485	3.71E-05
GO:0045110	intermediate filament bundle assembly	4	6	3.78E-05
GO:0030216	keratinocyte differentiation	12	267	4.44E-05
GO:0002376	immune system process	38	2370	5.25E-05
GO:0001775	cell activation	23	1024	5.72E-05
GO:0045104	intermediate filament cytoskeleton organization	6	41	5.72E-05
GO:0048518	positive regulation of biological process	65	5459	6.24E-05
GO:0050896	response to stimulus	83	7824	6.24E-05
GO:0045109	intermediate filament organization	5	22	6.26E-05
GO:0042060	wound healing	15	461	6.61E-05
GO:0022607	cellular component assembly	37	2343	8.46E-05
GO:0097237	cellular response to toxic substance	10	195	9.46E-05
GO:0050878	regulation of body fluid levels	15	483	0.00011
GO:0043687	post-translational protein modification	13	365	0.00013
GO:0006950	response to stress	45	3267	0.00017
GO:0042743	hydrogen peroxide metabolic process	5	31	0.00024
GO:0048519	negative regulation of biological process	59	4953	0.00025
GO:0030162	regulation of proteolysis	18	742	0.00027
GO:0065008	regulation of biological quality	47	3559	0.00027
GO:0000302	response to reactive oxygen species	9	189	0.00048
GO:0048523	negative regulation of cellular process	54	4454	0.00048
GO:0052547	regulation of peptidase activity	13	420	0.00049
GO:0030855	epithelial cell differentiation	16	649	0.00071
GO:0045321	leukocyte activation	19	894	0.00082
GO:0042542	response to hydrogen peroxide	7	112	0.00083
GO:0065003	protein-containing complex assembly	26	1514	0.00083
GO:0072376	protein activation cascade	6	74	0.00083
GO:1902532	negative regulation of intracellular signal transduction	14	514	0.00083
GO:0009636	response to toxic substance	13	468	0.0013
GO:0016999	antibiotic metabolic process	7	124	0.0015
GO:0032502	developmental process	60	5401	0.0015
GO:0043933	protein-containing complex subunit organization	28	1770	0.0015
GO:0048522	positive regulation of cellular process	56	4898	0.0015

GO:0048585	negative regulation of response to stimulus	25	1483	0.0015
GO:0006749	glutathione metabolic process	5	52	0.0018
GO:0006518	peptide metabolic process	13	497	0.0022
GO ID	Description	Observed	Total	FDR
GO:0010812	negative regulation of cell-substrate adhesion	5	55	0.0022
GO:0016032	viral process	14	571	0.0022
GO:0032501	multicellular organismal process	68	6507	0.0022
GO:0051704	multi-organism process	32	2222	0.0022
GO:0010810	regulation of cell-substrate adhesion	8	189	0.0025
GO:0008219	cell death	20	1080	0.0026
GO:0031329	regulation of cellular catabolic process	16	743	0.0027
GO:0009056	catabolic process	28	1859	0.003
GO:0051918	negative regulation of fibrinolysis	3	10	0.003
GO:0071230	cellular response to amino acid stimulus	5	60	0.003
GO:0075522	IRES-dependent viral translational initiation	3	10	0.003
GO:0097435	supramolecular fiber organization	11	383	0.0032
GO:0072593	reactive oxygen species metabolic process	6	103	0.0037
GO:0007275	multicellular organism development	53	4726	0.0038
GO:0051128	regulation of cellular component organization	32	2306	0.0038
GO:0052548	regulation of endopeptidase activity	11	393	0.0039
GO:0006898	receptor-mediated endocytosis	8	209	0.0043
GO:0012501	programmed cell death	19	1042	0.0043
GO:0030155	regulation of cell adhesion	14	623	0.0043
GO:0031581	hemidesmosome assembly	3	12	0.0043
GO:0050789	regulation of biological process	99	11116	0.0043
GO:0065007	biological regulation	103	11740	0.0043
GO:0030154	cell differentiation	42	3457	0.0046
GO:0051246	regulation of protein metabolic process	35	2668	0.0046
GO:0051336	regulation of hydrolase activity	21	1238	0.0046
GO:2001242	regulation of intrinsic apoptotic signaling pathway	7	159	0.0046
GO:0019430	removal of superoxide radicals	3	13	0.0048
GO:0043086	negative regulation of catalytic activity	16	809	0.0055
GO:0044248	cellular catabolic process	25	1646	0.0055
GO:0048513	animal organ development	37	2926	0.0055
GO:0010035	response to inorganic substance	12	491	0.0056
GO:0042493	response to drug	17	900	0.0056
GO:0043603	cellular amide metabolic process	15	732	0.0057
GO:0048856	anatomical structure development	55	5085	0.0057
GO:0006955	immune response	24	1560	0.0058
GO:0007044	cell-substrate junction assembly	4	40	0.0062
GO:0032879	regulation of localization	33	2524	0.0067
GO:0048731	system development	47	4144	0.0068
GO:0001732	formation of cytoplasmic translation initiation complex	2	2	0.0069
GO:0052047	interaction with other organism via secreted substance involved in symbiotic interaction	2	2	0.0069
GO:1904237	positive regulation of substrate-dependent cell migration, cell attachment to substrate	2	2	0.0069
GO:0080134	regulation of response to stress	21	1299	0.0072
GO:0051291	protein heterooligomerization	6	126	0.0075
GO:0044092	negative regulation of molecular function	19	1119	0.0077
GO:0006979	response to oxidative stress	10	373	0.008
GO:0070887	cellular response to chemical stimulus	34	2672	0.008
GO:0010951	negative regulation of endopeptidase activity	8	242	0.0082
GO:1902882	regulation of response to oxidative stress	5	83	0.0083
GO:0007162	negative regulation of cell adhesion	8	245	0.0088

7. Supplementary figure 3. Molecular functions (false-discovery rate <0.01) identified by GO molecular function enrichment for proteins differentially expressed after surgery.

GO-term	Description	Count in gene set	FDR
GO:0005198	structural molecule activity	23 of 679	3.05E-07
GO:0140104	molecular carrier activity	7 of 40	8.95E-06
GO:0005344	oxygen carrier activity	5 of 14	2.89E-05
GO:0005488	binding	111 of 11878	3.88E-05
GO:0044877	protein-containing complex binding	22 of 968	0.00014
GO:0005515	protein binding	73 of 6605	0.0002
GO:0019825	oxygen binding	5 of 36	0.0007
GO:0016209	antioxidant activity	6 of 79	0.0019
GO:0005518	collagen binding	5 of 61	0.0057
GO:0005200	structural constituent of cytoskeleton	6 of 106	0.0071
GO:0061134	peptidase regulator activity	8 of 211	0.0073

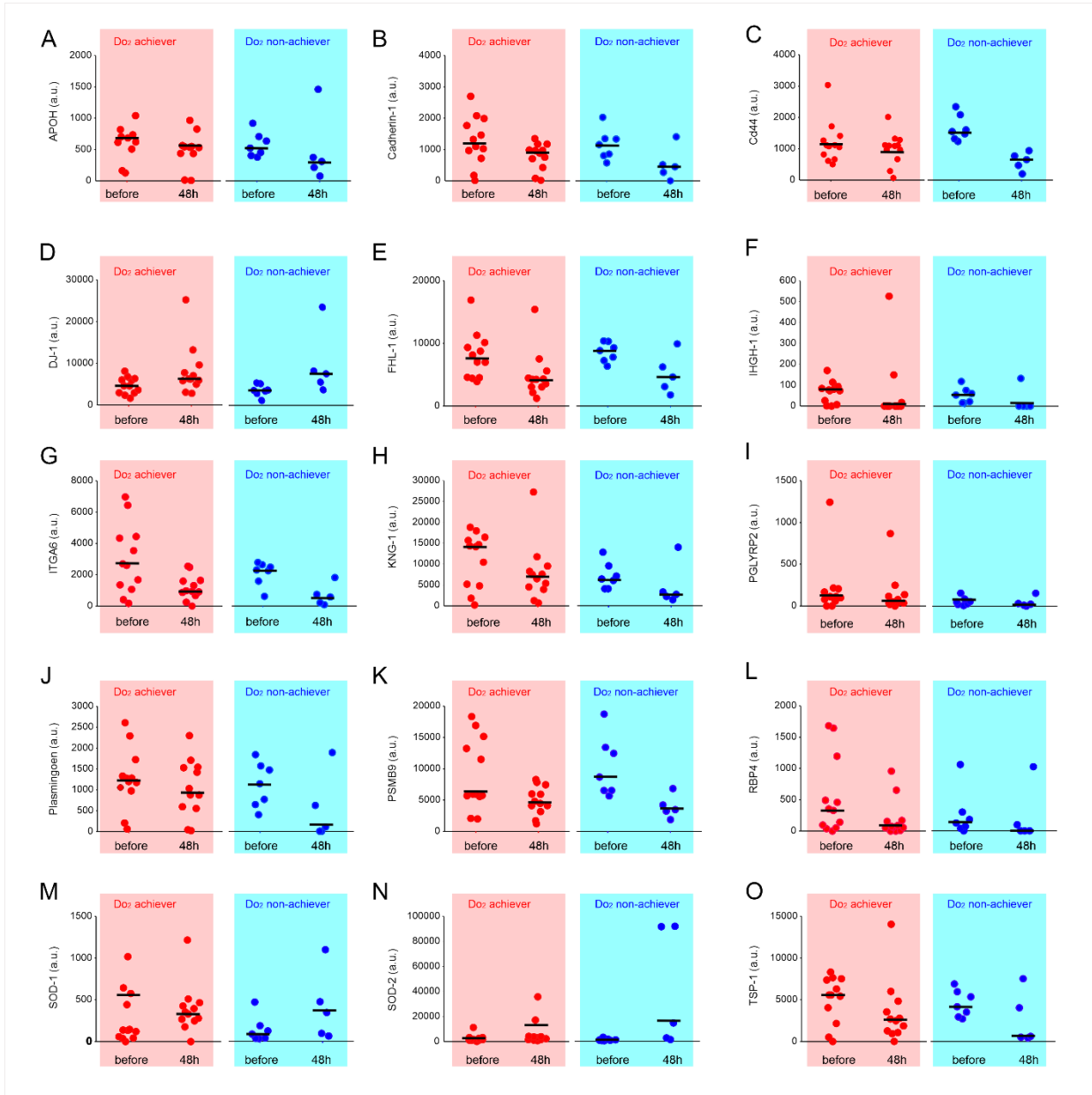
8. Supplementary figure 4. REACTOME pathways (false-discovery rate <0.01)

identified enriched by proteins differentially expressed after surgery.

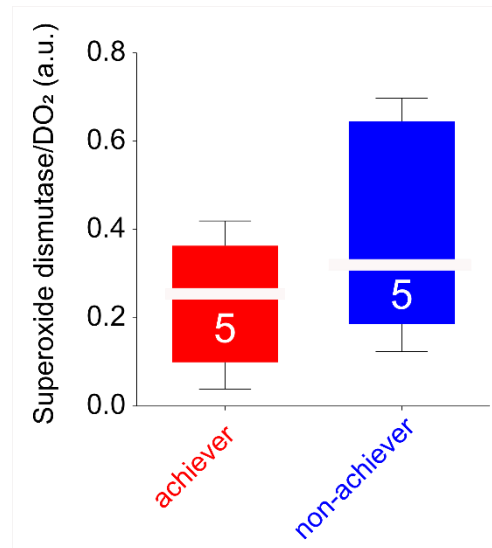
REACTOME ID	Term	observed	background count	FDR
HSA-109582	Hemostasis	21	601	1.23E-06
HSA-168256	Immune System	38	1925	1.23E-06
HSA-6809371	Formation of the cornified envelope	11	128	1.23E-06
HSA-1474244	Extracellular matrix organization	14	298	5.74E-06
HSA-76002	Platelet activation, signaling and aggregation	13	256	6.08E-06
HSA-114608	Platelet degranulation	9	125	3.34E-05
HSA-3000171	Non-integrin membrane-ECM interactions	7	58	3.34E-05
HSA-381426	Regulation of Insulin-like Growth Factor (IGF) transport and uptake by Insulin-like Growth Factor Binding Proteins (IGFBPs)	9	123	3.34E-05
HSA-168249	Innate Immune System	23	1012	3.91E-05
HSA-1474228	Degradation of the extracellular matrix	9	139	4.71E-05
HSA-392499	Metabolism of proteins	33	1948	6.86E-05
HSA-6798695	Neutrophil degranulation	15	471	6.86E-05
HSA-3000170	Syndecan interactions	5	26	8.85E-05
HSA-216083	Integrin cell surface interactions	7	83	0.00012
HSA-1266738	Developmental Biology	21	1023	0.00038
HSA-2173782	Binding and Uptake of Ligands by Scavenger Receptors	5	40	0.00047
HSA-5653656	Vesicle-mediated transport	16	649	0.00047
HSA-8957275	Post-translational protein phosphorylation	7	106	0.00047
HSA-1643685	Disease	20	1018	0.00085
HSA-597592	Post-translational protein modification	24	1366	0.00085
HSA-8862803	Deregulated CDK5 triggers multiple neurodegenerative pathways in Alzheimer's disease models	4	22	0.00085
HSA-72649	Translation initiation complex formation	5	55	0.0015
HSA-8874081	MET activates PTK2 signaling	4	29	0.0017
HSA-446107	Type I hemidesmosome assembly	3	11	0.0024
HSA-156827	L13a-mediated translational silencing of Ceruloplasmin expression	6	107	0.0029
HSA-2168880	Scavenging of heme from plasma	3	13	0.0034
HSA-72737	Cap-dependent Translation Initiation	6	115	0.0039
HSA-6806834	Signaling by MET	5	76	0.0045
HSA-9006934	Signaling by Receptor Tyrosine Kinases	11	437	0.0052
HSA-3000480	Scavenging by Class A Receptors	3	18	0.0066
HSA-2262752	Cellular responses to stress	10	384	0.0071
HSA-446728	Cell junction organization	5	91	0.0088

9. Supplementary figure 5. Individual protein expression levels between achievers and non-achievers before and after surgery.

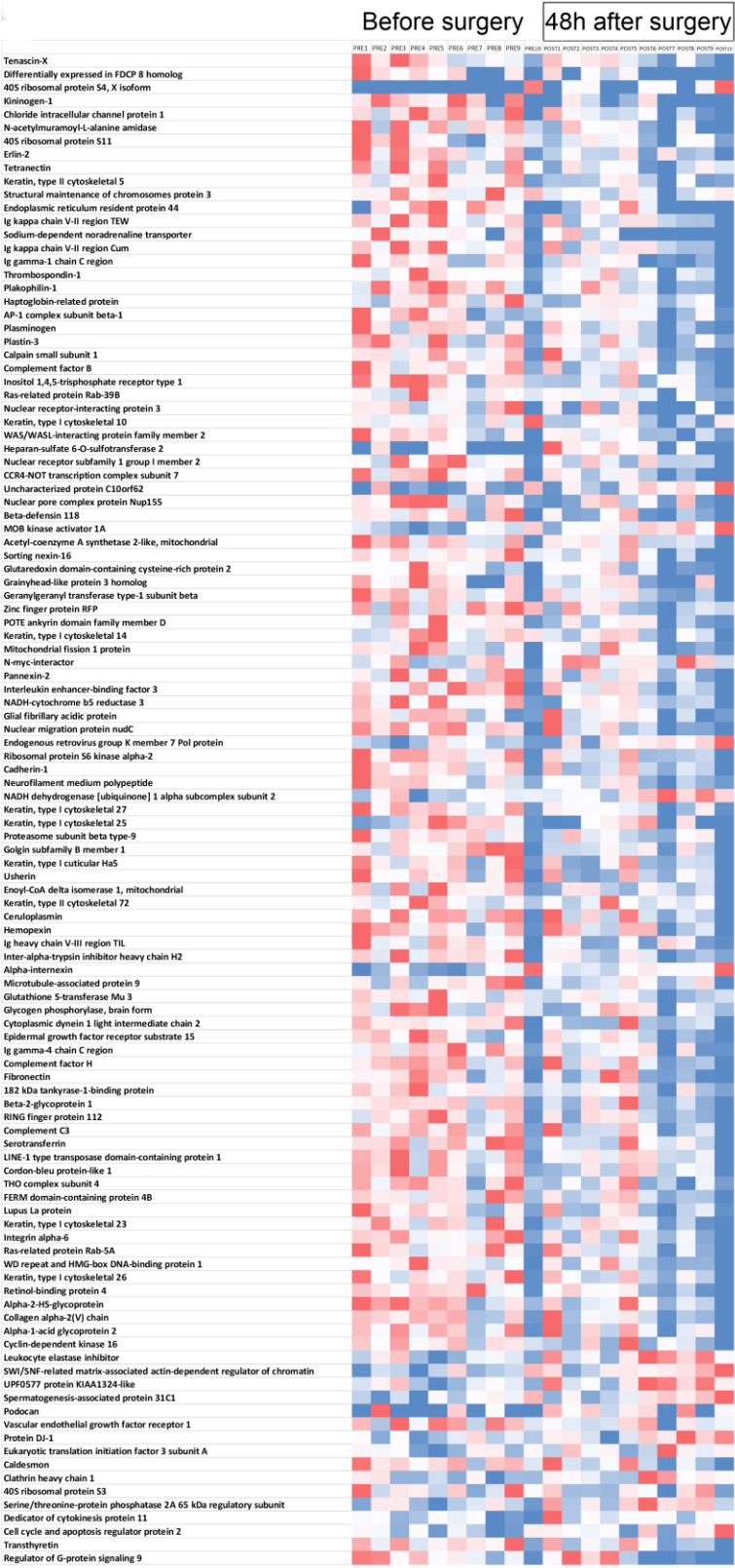
Bars represent median values.



10. Supplementary Figure 6. Summary box-plot data for MnSOD expression semi-quantified by immunoblot in postoperative skin biopsy samples.



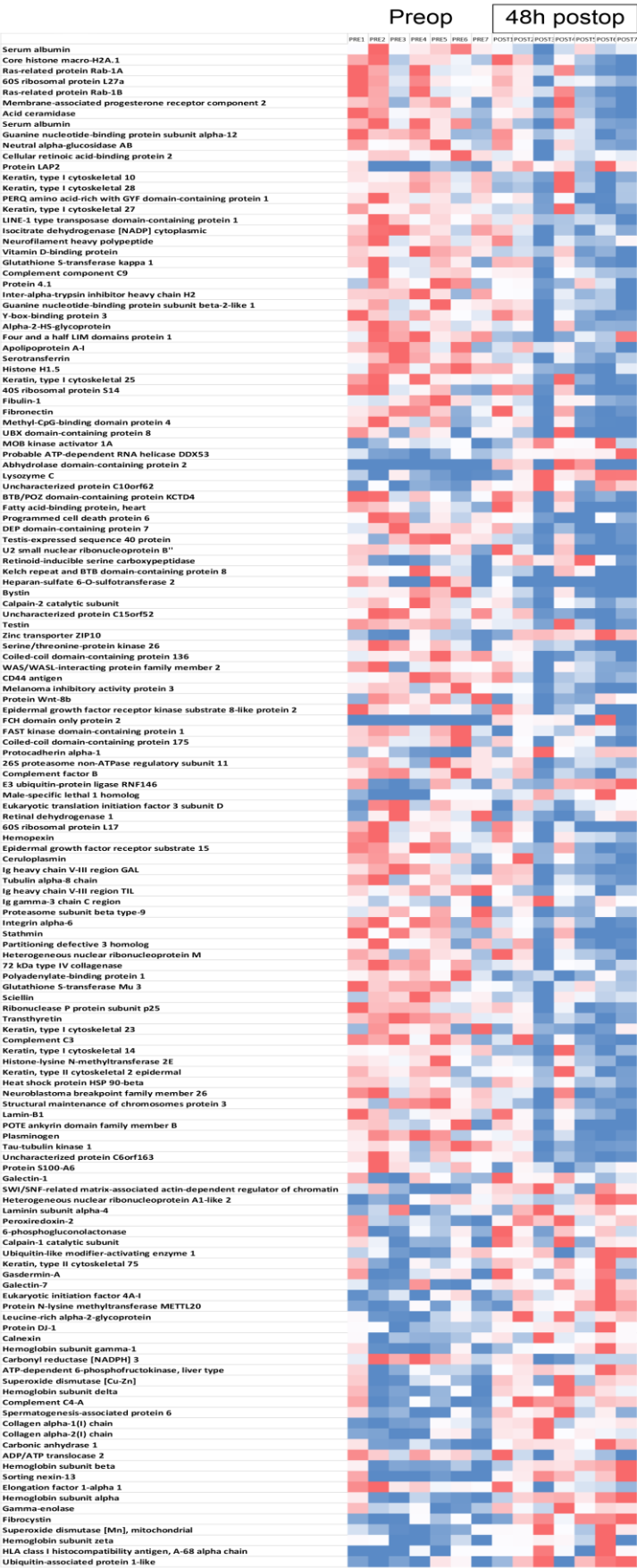
11. Supplementary Figure 7: Heatmap for proteins altered after surgery in patients where preoperative DO2 was achieved.



12. Supplementary Figure 8: Heatmap for proteins altered after surgery in patients

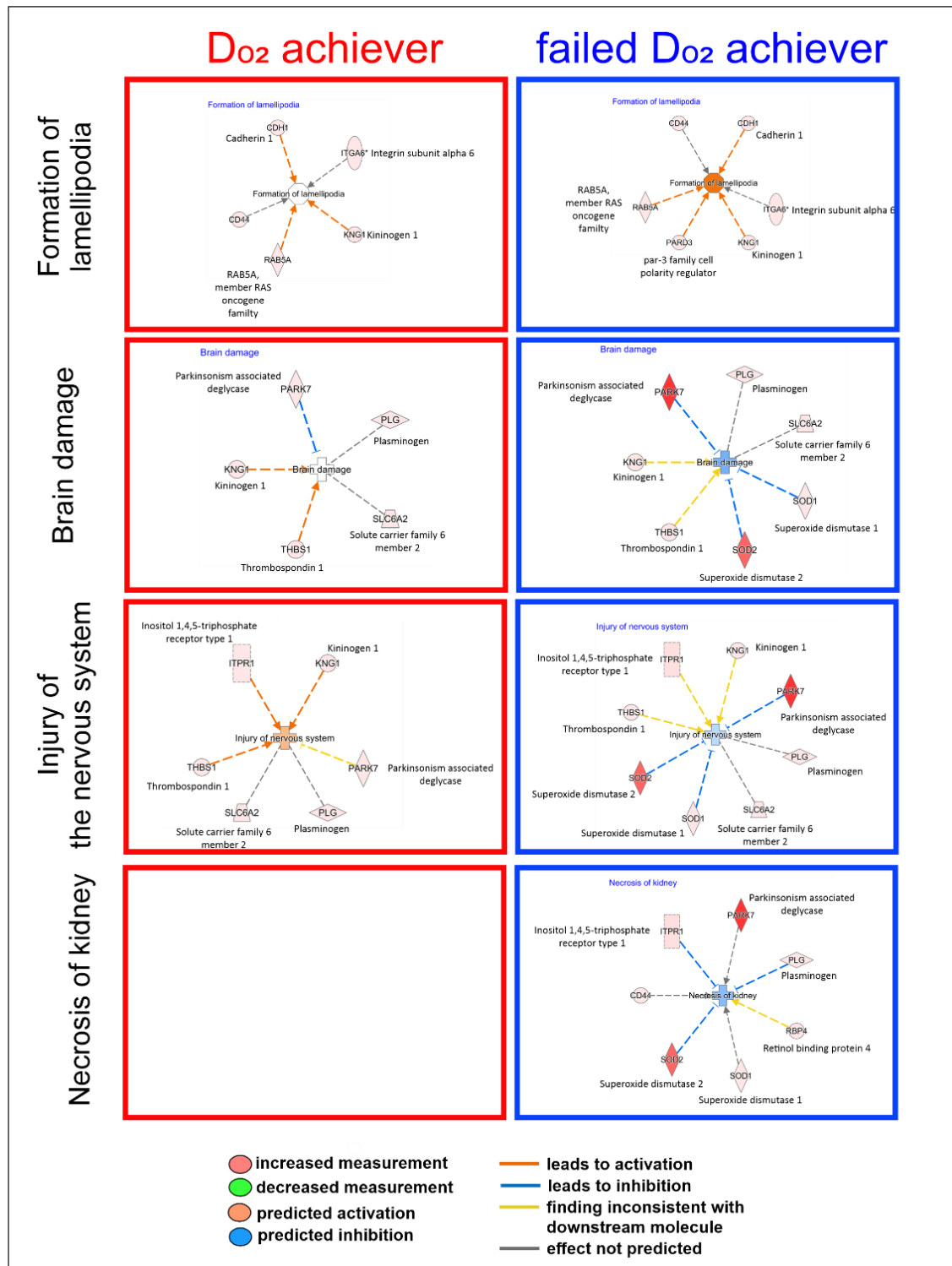
where preoperative DO2

was not achieved.

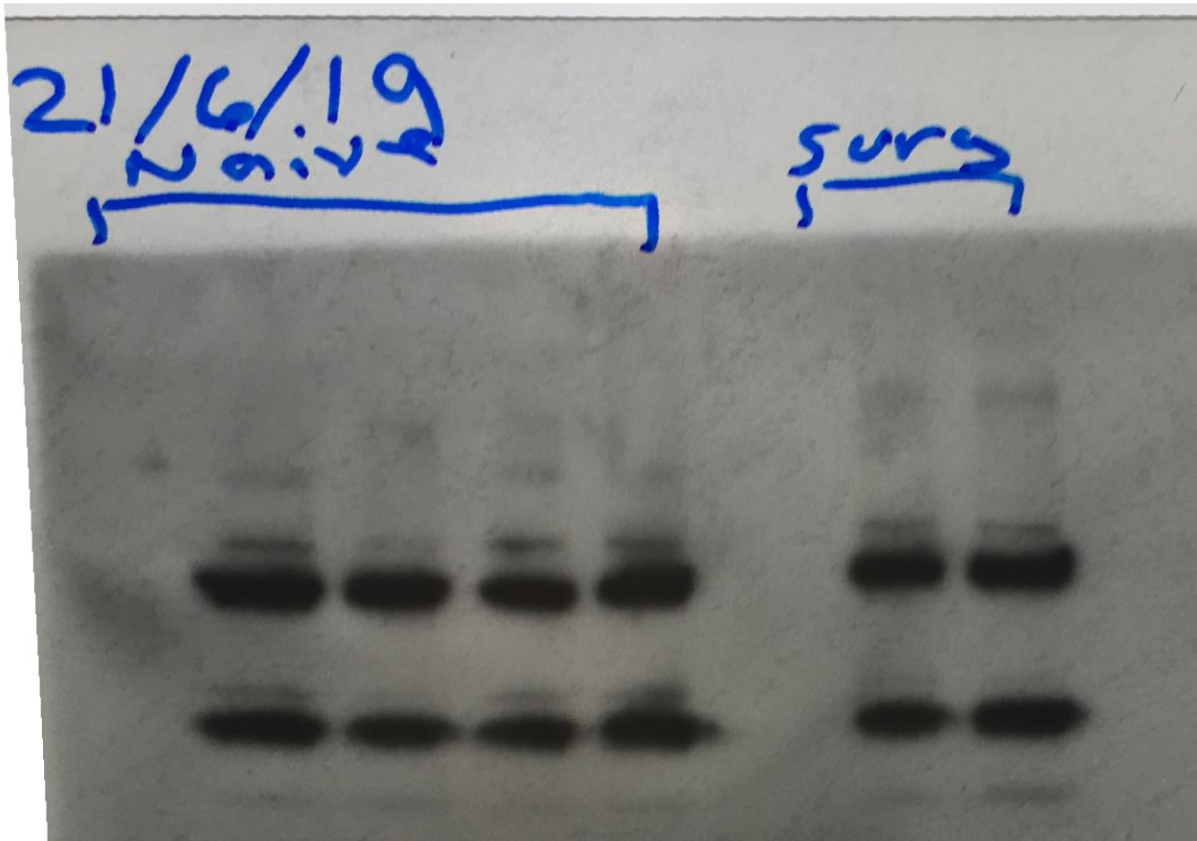


13. Supplementary Figure 9. IPA molecular pathologic pathways.

Blank entry indicates no enrichment DO₂ achiever group was found on IPA analysis. Other significant pathways are shown in main text.

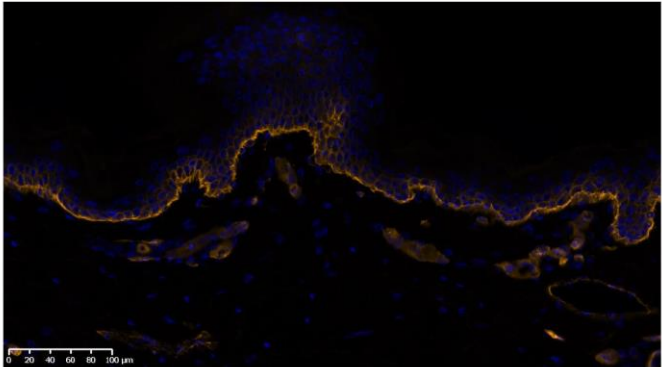


14. Supplementary Figure 10. Example of uncropped immunoblot from mouse liver resection surgery model.



15. Supplementary Figure 11: IHC protocols for CD44 and ITGA6

ITGA6			
Control samples	Positive and negative (without primary antibody) on normal human skin (PHN) (picture below exported at x20 magnification from original scan)		
Post-fixation	<input checked="" type="checkbox"/> Cold acetone	10 min	-20°C
Blocking	PBS 1X / BSA 3% / NGS 10%	30 min	Room Temperature
Primary antibody	<input checked="" type="checkbox"/> Merck Millipore, MAB1378 Dilution: 1/50	Overnight	4°C
Secondary antibody	<input checked="" type="checkbox"/> Life Technologies, A-21434 [Goat anti-Rat IgG (H+L) Cross-Adsorbed Secondary Antibody, Alexa Fluor 555, Invitrogen™] ; Dilution(s): 1/500	1h	Room Temperature



CD44			
Control samples	Positive and negative (without primary antibody) on normal human skin (PHN) (picture below exported at x20 magnification from original scan)		
Post-fixation	<input checked="" type="checkbox"/> Cold acetone	10 min	-20°C
Blocking	PBS 1X / BSA 3% / NGS 10%	30 min	Room Temperature
Primary antibody	<input checked="" type="checkbox"/> Novocastra, BMS144 Dilution: 1/50	Overnight	4°C
Secondary antibody	<input checked="" type="checkbox"/> Life Technologies, A-21422 [Goat anti-Mouse IgG (H+L) Cross-Adsorbed Secondary Antibody, Alexa Fluor 555, Invitrogen™] ; Dilution: 1/500	1h	Room Temperature

