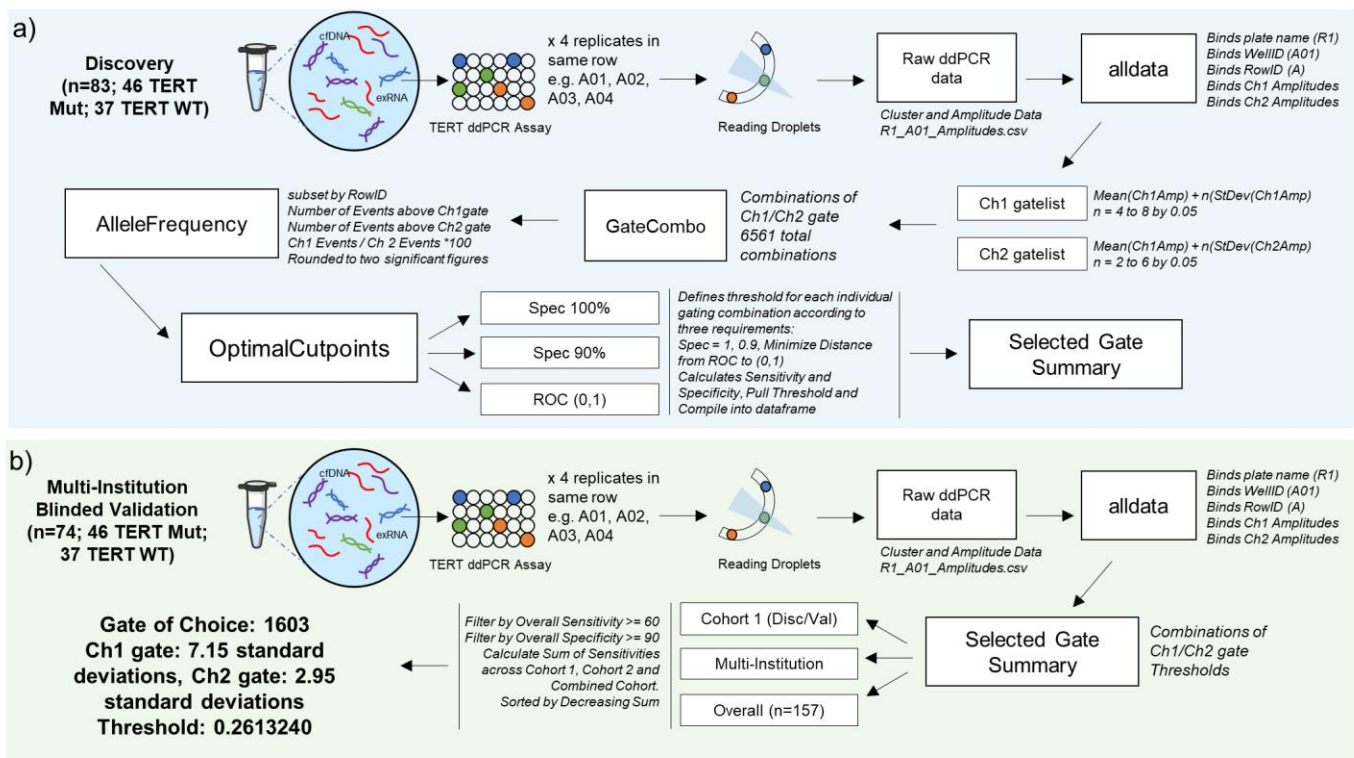
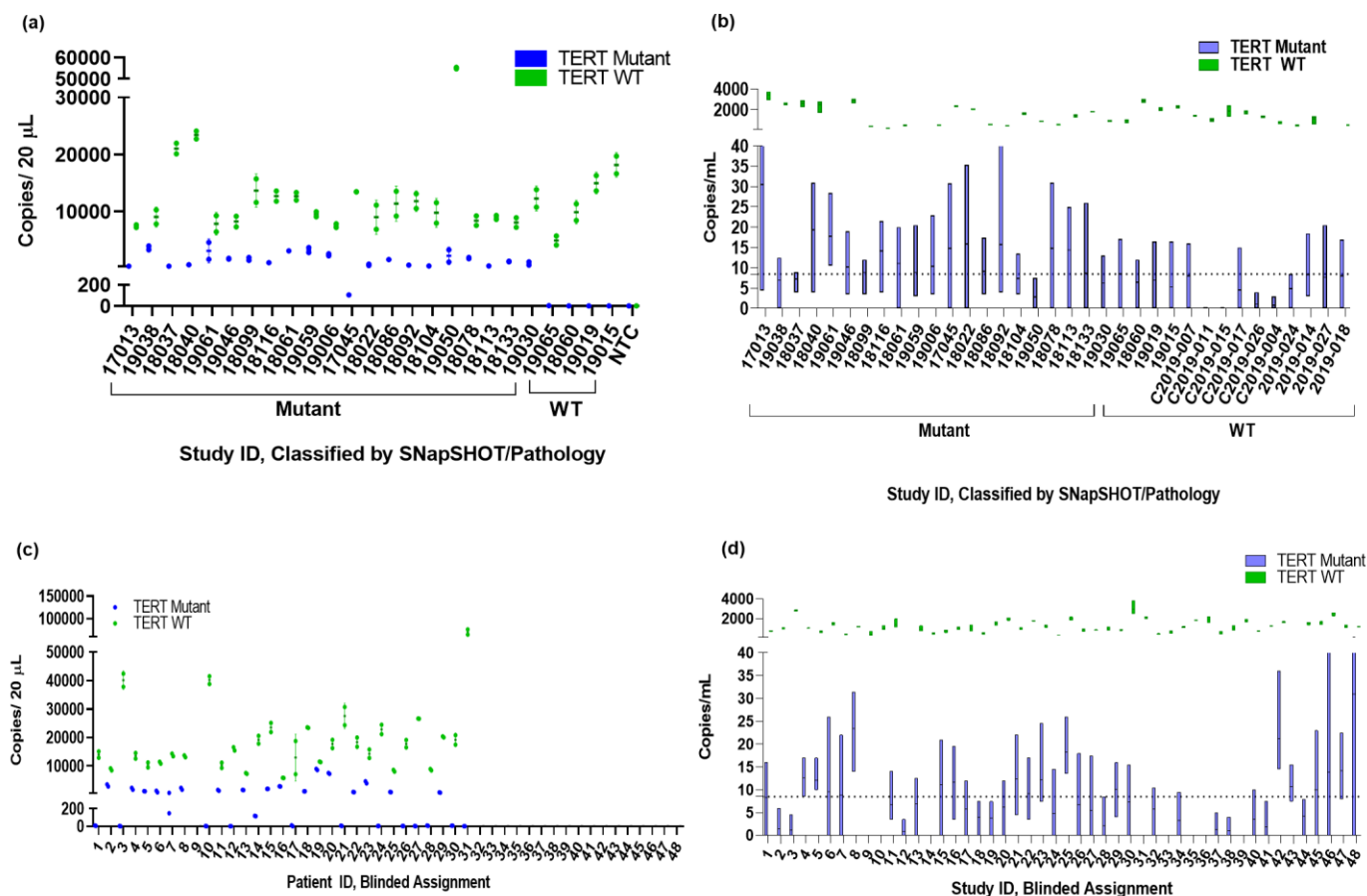


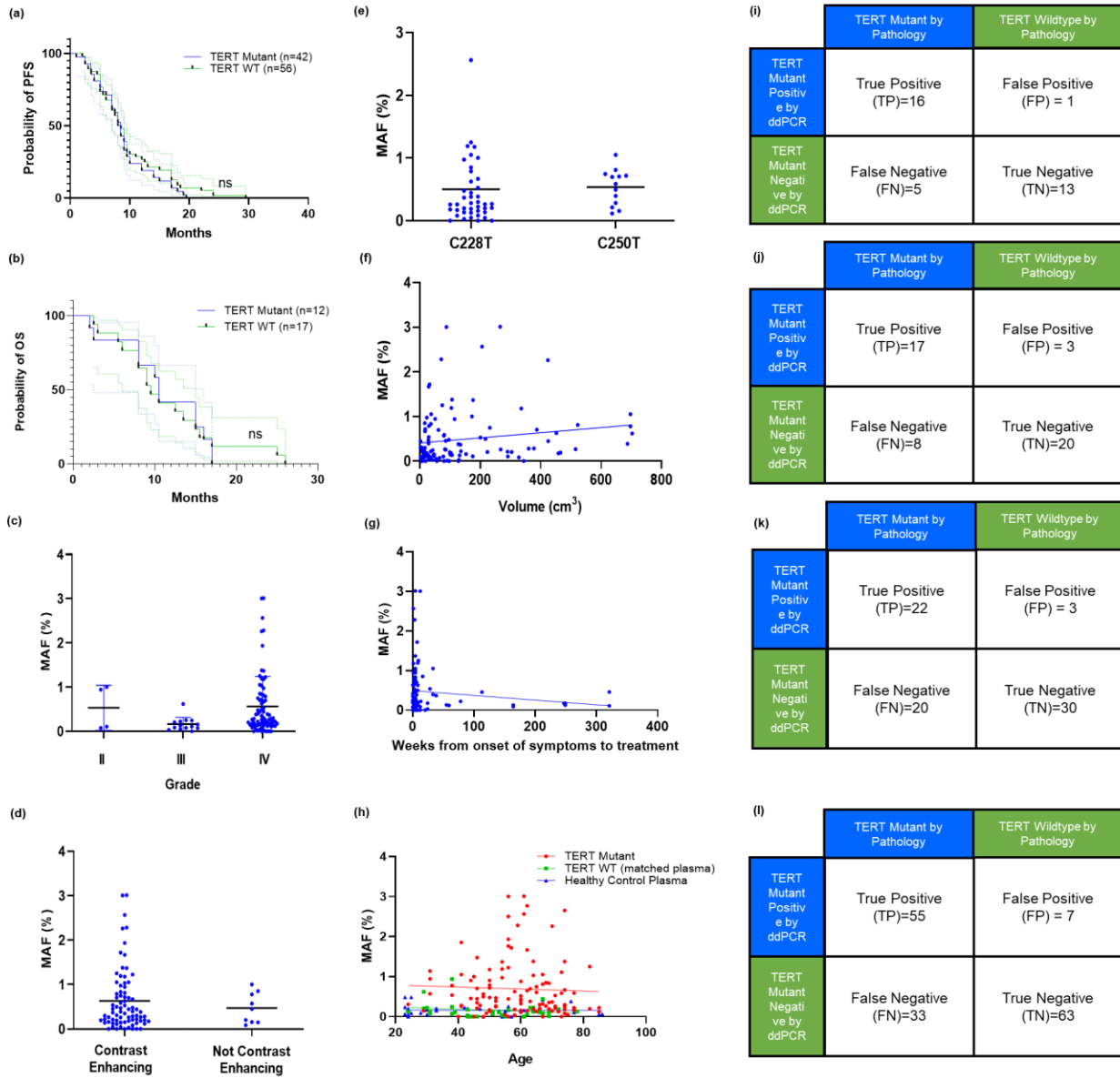
Extended Data Figure 1. – 2D Amplitudes for Mutant Allele Frequencies, merging all replicates. Left (C250T) and Right (C228T)



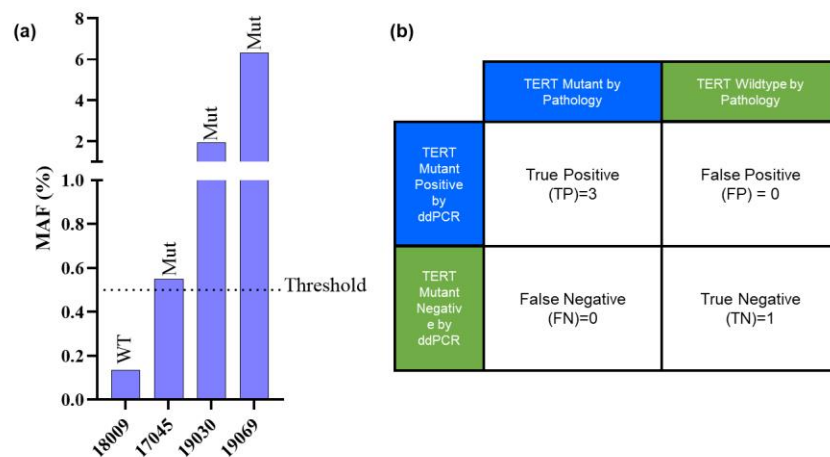
Extended Data Fig. 2. R-based gating setting and detection of TERT Promoter Mutation in Plasma of Discovery, Validation and Multi-Institution Cohorts. (a) Schematic depicting gating strategy and threshold determination using the training set (discovery and validation cohorts; n=83) (b) Schematic depicting blinded testing of validation set (multi-institution cohort; n=74) using gate and thresholds trained on discovery set.



Extended Data Figure 3. Tumor Tissue Analysis and Analysis of plasma TERT in Copies/mL. (a) gDNA was extracted from 21 TERT mutant and 4 TERT WT tumor tissue samples. 100 ng of tumor tissue gDNA was used as input for absolute quantification of copies of TERT mutant and TERT WT. Copies per 20 µL of TERT mutant and WT are plotted against Study ID, classified by SNapSHOT/Pathology. (b) 4 replicates of 4 µL of cfDNA from matched plasma samples (21 TERT mutant and WT) and healthy control (10) was used as input for absolute quantification of TERT mutant and wildtype copies. Copies/mL were calculated using the formula described in Methods. Copies/mL for plasma samples are plotted against Study ID, classified by SNapSHOT/Pathology as floating bars, with line at the mean copies/mL. (c) Mean copies/mL of TERT mutant for plasma samples are plotted against SNapSHOT/Pathology classification. Dotted line indicates threshold of 8.5 copies/mL, used to designate samples as mutant positive or negative.



Extended Data Figure 4. Correlations between (a) progression free survival, (b) overall survival, (c) tumor grade, (d) contrast enhancement, (e) type of TERT mutation, (f) tumor volume, (g) duration of disease, (h) age. Contingency tables are provided for (i) Discovery Sample Set 1 (j) Discovery Sample Set 2 (k) Multi-Institution Validation Cohort (l) Overall Combined Cohort.



Extended Data Figure 5. (a) 4 replicates of 4 μ L of cfDNA from matched CSF samples ($n=4$; $n=3$ TERT mutant and $n=1$ WT) was used as input for absolute quantification of TERT mutant and wildtype copies. MAF is calculated using the formula described in Methods. Copies/mL for plasma samples are plotted against Study ID, classified by SNaPshot/Pathology as floating bars, with line at the mean copies/mL. (b) Contingency table for matched CSF plasma.

Supplementary Table 1. BRISQ reporting guidelines for study cohort.

I. Pre-acquisition:	
Biospecimen type:	Solid tissue, plasma
Anatomical Site:	Brain tumor tissue from disease site, Antecubital arm for peripheral blood
Disease status:	Specimens were obtained from adults with known or suspected gliomas who had no prior history of other primary tumors or active infections. Samples were also obtained from adult healthy controls with no prior history of cancer, neurological disorders, or active infections.
Clinical characteristics of patients:	Pertinent clinical data obtained were age, sex, tumor location, tumor volume, tumor pathology (histological and molecular features), time since onset of symptoms, and prior oncology treatment, if applicable. Clinical data for healthy controls included age, sex, and current medications.
Vital State:	All samples were collected from live patients.
Diagnosis:	For glioma patients, all diagnoses were based on tumor tissue pathological distinctions defined by a neuropathologist. Healthy controls were determined by a self-reported medical evaluation and basic chemistry blood tests. Pathology included TERT mutant glioma, TERT wildtype glioma, and healthy control.
II. Acquisition:	
Collection mechanism and parameters:	Fresh tumor tissue obtained during surgical resection was collected in sterile containers with saline and kept in the operating room until completion of the surgical procedure. Tissue specimen were flash frozen with or without RNALater immediately. Whole blood was collected via standard venipuncture or obtained from arterial lines prior to surgical tumor tissue resection. All healthy control plasma samples were collected from a standard venipuncture.
Time from biospecimen excision/acquisition to stabilization:	All biospecimen were processed within 2 hours of collection.
III. Stabilization/Preservation:	
Mechanism of stabilization:	RNALater was used to preserve tumor tissue. K2 EDTA tubes were used to collect whole blood. No stabilization reagent was used for processed plasma. All samples were processed at room temperature.
Type of long-term preservation:	All samples were stored at -80 C.
IV. Storage/Transport:	
Storage temperature:	All biospecimen were collected at room temperature and were stored at -80 C following processing.
Storage duration:	1 month to 2 years.
V. Quality Assurance Measures Relevant to the Extracted Product and Processing Prior to Analyte Extraction and Evaluation:	
Composition assessment and selection:	Tumor presence in extracted tissue was determined by a neuropathologist. Plasma samples were evaluated for hemolysis based on color and hemolysed samples were excluded from this study.