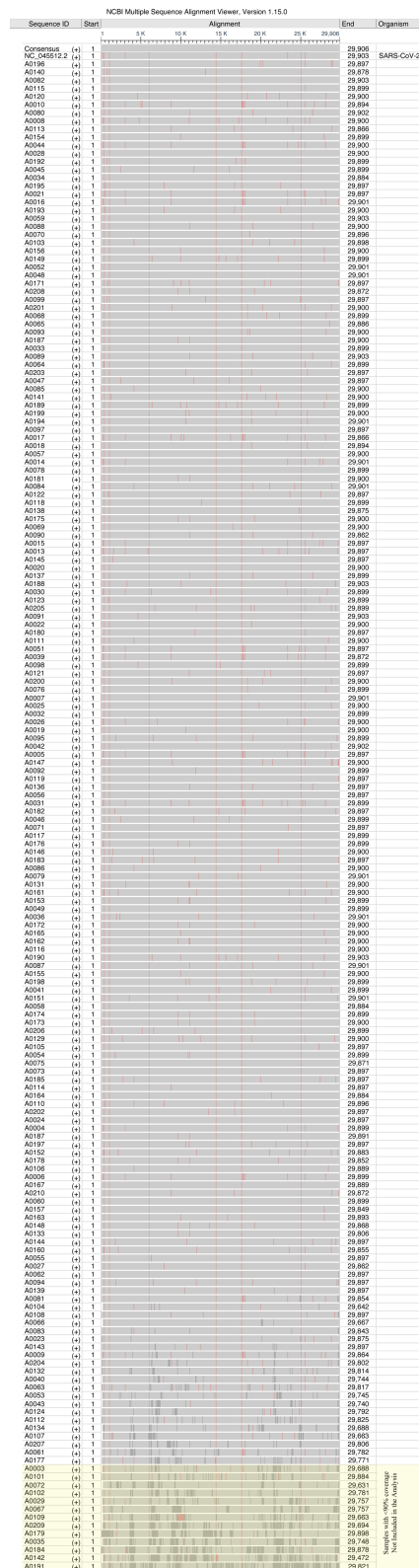


## SUPPLEMENTARY INFORMATION:

**Figure S1:** Alignment of SARS-CoV-2 sequences from NV patient's specimens.



## Figure S2. Dendrogram of Nevada specimens in context of other sequenced

specimens. (a) Nucleotide

mutation clock from

Nextstrain.org with the

SARS-CoV-2 genome

isolated from Washington

(USA/WA 1/2020) on

January 24th and first

specimen from Nevada

(A0004) on March 5th

indicated in red. (b) Circular

dendrogram of Nevada

specimens from March 6th

to June 5th positioned

within a subsample of

global sequences from

Nextstrain.org during the

same time period, the

larger dots indicate

specimens from Nevada.

The five clades are colored

19A (blue), 19B (teal), 20A (green), 20B (yellow) and 20C (orange).

Fig. S1a

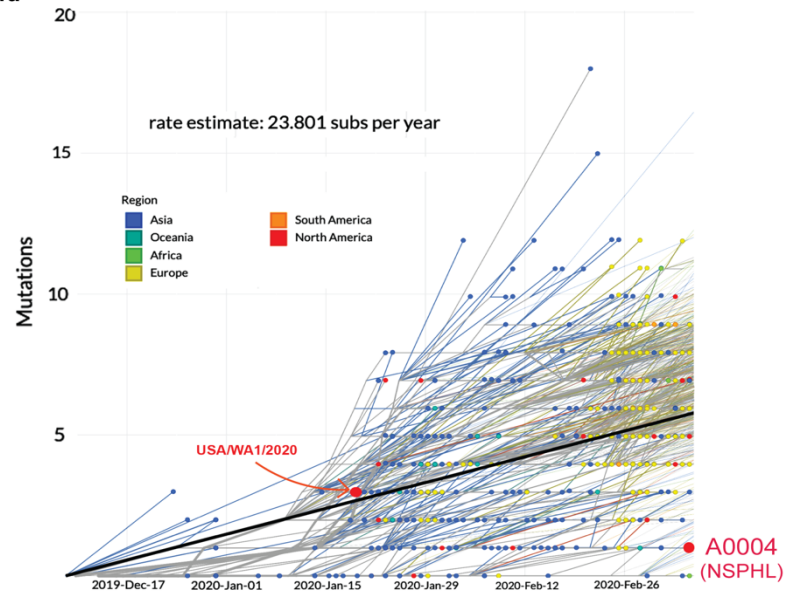
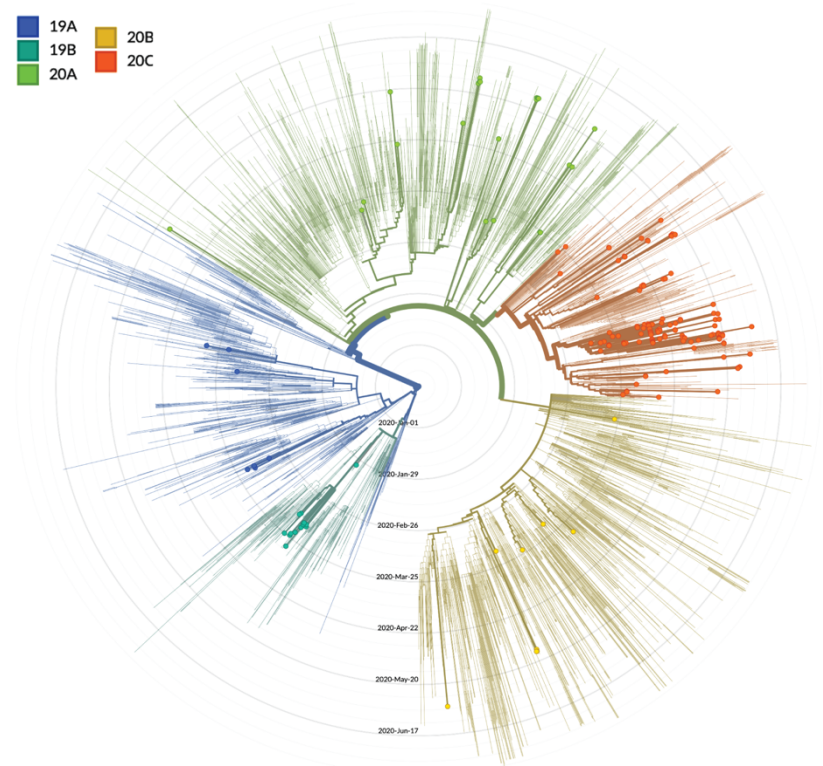


Fig. S1b



**Figure S3. Global distribution of clades from March 6th to June 5th.** Pie charts depict

the proportion of the clades within (a) four main areas in Nevada, these include

specimens from

**Fig. S2a**

Washoe county

(upper left), 23

specimens from

Carson-Tahoe

(middle left), 40

specimens from

Clark county

(bottom right),

**Fig. S2b**

and 19 from rural

Nevada

(middle). The

five clades are

colored 19A

(blue), 19B

(teal), 20A

(green), 20B

(yellow) and 20C (orange). (b) Pie chart of the clades in each indicated country from

March 6th to June 5th generated from a subsampling of sequences deposited in

Nextstrain.org. The size of the pie chart corresponds to the relative specimen number for

each region.

