

Multiple measures of depression to enhance validity of Major Depressive Disorder in the UK Biobank

Supplement

Table of Contents

1	<i>Derivation of depression phenotypes</i>	3
1.1	Help-seeking	3
1.2	Self-reported Depression	3
1.3	Antidepressant Usage	3
1.4	Depression (Smith)	4
1.5	Hospital (ICD-10)	5
1.6	Lifetime Depression (MHQ)	5
2	<i>Derivation of psychosis phenotypes</i>	7
2.1	Self-reported Psychosis	7
2.2	Antipsychotic Usage	7
2.3	Bipolar (Smith)	7
2.4	Hospital (ICD-10) Psychosis	8
2.5	Psychosis (MHQ Screen)	8
3	<i>Derivation of Controls</i>	9
3.1	Controls	9
3.2	MHQ controls	9
4	<i>Demographic data</i>	11
5	<i>Count of individuals per phenotypic sub-category</i>	12
5.1	Depression	12
	Supplementary Table 1: Lifetime Depression (MHQ)	12
	Supplementary Table 2: Help-seeking	12
	Supplementary Table 3: Depression (Smith)	12
	Supplementary Table 4: Hospital (ICD-10)	12
	Supplementary Table 5: Self-reported Depression	13
	Supplementary Table 6: Antidepressant usage	13
5.2	Psychosis	15
	Supplementary Table 7: Psychosis (MHQ screen)	15
	Supplementary Table 8: Bipolar (Smith)	15
	Supplementary Table 9: Hospital (ICD-10) Psychosis	15

	Supplementary Table 10: Self-reported Psychosis	17
	Supplementary Table 11: Antipsychotic Usage	17
6	<i>Polygenic risk score analyses results</i>	19
	Supplementary Table 12: Results for tests of association between PRS and depression phenotypes.....	19
	Supplementary Figure 1: Association between PRS and depression phenotypes across eight P_T	22
7	<i>Area Under the Curve Analyses</i>	23
	Supplementary Figure 2: ROC plots.....	23
8	<i>GWAS results</i>	24
	Supplementary Figure 3: Manhattan and QQ plots from GWAS of One Measure of Depression.....	24
	Supplementary Figure 4: Manhattan and QQ plots from GWAS of Two Measures of Depression	25
	Supplementary Figure 5: Manhattan and QQ plots from GWAS of Three Measures of Depression	26
	Supplementary Figure 6: Manhattan and QQ plots from GWAS of Four & Five Measure of Depression.	27
	Supplementary Figure 7: Manhattan and QQ plots from GWAS of Lifetime Depression (MHQ).....	28
	Supplementary Table 13: GWAS and h^2_{SNP} results: depression cases compared to controls.....	29
	Supplementary Table 14: GWAS and h^2_{SNP} results: depression cases compared to MHQ controls.....	30
9	<i>Genetic Correlations</i>	31
	Supplementary Table 15: Genetic correlations between UKB and PGC depression phenotypes.	31
	Supplementary Figure 8: Genetic correlation matrix.	32
10	<i>References</i>	33

1 Derivation of depression phenotypes

This section describes the criteria for defining cases for each of the six depression phenotypes derived from different sources of phenotypic information in the UK Biobank. [ID] refers to the corresponding UK Biobank (UKB) Field ID.

1.1 Help-seeking

The criteria for defining ‘Help-seeking’ cases was endorsement of either of the following questions at baseline or the subsequent two repeat assessments:

- "Have you ever seen a general practitioner (GP) for nerves, anxiety, tension or depression?" [ID 2090]; **OR**
- "Have you ever seen a psychiatrist for nerves, anxiety, tension or depression?" [ID 2100]

1.2 Self-reported Depression

Criteria for defining ‘Self-reported Depression’ cases:

- Endorsed “depression” at baseline or the subsequent two repeat assessments [ID 20002] [UKB Data-Coding 6 = 1286]

1.3 Antidepressant Usage

The criteria for defining ‘Antidepressant Usage’ cases:

- Self-reported taking antidepressant medication at baseline or the subsequent two repeat assessments [ID 20003]. Antidepressant codes [UKB Data-Coding 4]: 1140879616, 1140921600, 1140879540, 1140867878, 1140916282, 1140909806, 1140867888, 1141152732, 1141180212, 1140879634, 1140867876, 1140882236, 1141190158, 1141200564, 1140867726, 1140879620, 1140867818, 1140879630, 1140879628, 1141151946, 1140867948, 1140867624, 1140867756, 1140867884, 1141151978, 1141152736, 1141201834, 1140867690, 1140867640, 1140867920, 1140867850, 1140879544, 1141200570, 1140867934, 1140867758, 1140867914, 1140867820, 1141151982, 1140882244, 1140879556, 1140867852, 1140867860, 1140917460, 1140867938, 1140867856, 1140867922, 1140910820, 1140882312, 1140867944, 1140867784, 1140867812, 1140867668

1.4 Depression (Smith)

The criteria for defining 'Depression (Smith)' cases is shown below, comprising the criteria for three depression phenotypes previously defined by Smith, et al. (2013)¹.

- Single episode of probable Major Depression [ID 20126, Case Coding = 5]
 - **EITHER**
 - Ever depressed/down for a whole week [ID 4598]; **AND**
 - At least two weeks duration [ID 4609]; **AND**
 - Only one episode [ID 4620]; **AND**
 - Ever seen a GP [ID 2090] **OR** a psychiatrist [ID 2100] for nerves, anxiety, depression
 - **OR**
 - Ever anhedonic (unenthusiasm/uninterest) for a whole week [ID 4631]; **AND**
 - At least two weeks duration [ID 5375]; **AND**
 - Only one episode [ID 5386]; **AND**
 - Ever seen a GP [ID 2090] **OR** a psychiatrist [ID 2100] for nerves, anxiety, depression
- Probable recurrent Major Depression (moderate) [ID 20126, Case Coding = 4]
 - **EITHER**
 - Ever depressed/down for a whole week [ID 4598]; **AND**
 - At least two weeks duration [ID 4609]; **AND**
 - At least two episodes [ID 4620]; **AND**
 - Ever seen a GP [ID 2090] (but not a psychiatrist) for nerves, anxiety, depression
 - **OR**
 - Ever anhedonic (unenthusiasm/uninterest) for a whole week [ID 4631]; **AND**
 - At least two weeks duration [ID 5375]; **AND**
 - At least two episodes [ID 5386]; **AND**
 - Ever seen a GP [ID 2090] (but not a psychiatrist) for nerves, anxiety, depression
- Probable recurrent Major Depression (severe) [ID 20126, Case Coding = 3]
 - **EITHER**
 - Ever depressed/down for a whole week [ID 4598]; **AND**
 - At least two weeks duration [ID 4609]; **AND**

- At least two episodes [ID 4620]; **AND**
- Ever seen a psychiatrist [ID 2100] for nerves, anxiety, depression
- **OR**
 - Ever anhedonic (unenthusiasm/uninterest) for a whole week [ID 4631]; **AND**
 - At least two weeks duration [ID 5375]; **AND**
 - At least two episodes [ID 5386]; **AND**
 - Ever seen a psychiatrist [ID 2100] for nerves, anxiety, depression

1.5 Hospital (ICD-10)

Participants were classified as ‘Hospital (ICD-10)’ cases if they were assigned any of the following primary [ID 41202] or secondary [ID 41204] ICD-10 codes between April 1997 and October 2016:

- Depressive episode: F32, F320, F321, F322, F323, F328, F329.
- Recurrent depressive disorder: F33, F330, F331, F332, F333, F334, F338, F339.

1.6 Lifetime Depression (MHQ)

The criteria for defining ‘Lifetime Depression (MHQ)’ cases is shown below. These criteria mirror those defined by Davis, et al. (2020)² for identifying individuals with a lifetime history of depression (referred to as ‘Depression ever’ in Davis, et al.).

- Endorsed at least one of the two core symptoms:
 - “Have you ever had a time in your life when you felt sad, blue, or depressed for two weeks or more in a row?” [ID 20446]; **OR**
 - “Have you ever had a time in your life lasting two weeks or more when you lost interest in most things like hobbies, work, or activities that usually give you pleasure?” [ID 20441]; **AND**
- Endorsed a score above threshold on the following questions:
 - “Please think of the two-week period in your life when your feelings of depression or loss of interest were worst.”
 - “How much of the day did these feelings usually last?” 4 = All day long, 3 = Most of the day, 2 = About half of the day, 1 = Less than half of the day [ID 20436].
Threshold > 2; **AND**

- “Did you feel this way” 3 = every day, 2 = almost every day, 1 = less often [ID 20439]. Threshold > 1; **AND**
- “Think about your roles at the time of this episode, including study / employment, childcare and housework, leisure pursuits. How much did these problems interfere with your life or activities?” 3 = a lot, 2 = somewhat, 1 = a little [ID 20440]. Threshold > 1; **AND**
- Endorsed experiencing ≥ 5 symptoms (including core) during worst episode of depression:
 - “Please think of the two-week period in your life when your feelings of depression or loss of interest were worst.”
 - “Did you feel more tired out or low on energy than is usual for you?” [ID 20449]
 - “Did you gain or lose weight without trying, or did you stay about the same weight?” [ID 20536]
 - “Did your sleep change?” [ID 20532]
 - “Did you have a lot more trouble concentrating than usual?” [ID 20435]
 - “People sometimes feel down on themselves, no good, worthless. Did you feel this way?” [ID 20450]
 - “Did you think a lot about death – either your own, someone else’s or death in general?” [ID 20437]

2 Derivation of psychosis phenotypes

This section describes the criteria for defining cases for each of the five psychosis phenotypes derived from different sources of phenotypic information in the UK Biobank. Participants who met the criteria for any of the five psychosis phenotypes were excluded from analysis. [ID] refers to the corresponding UK Biobank (UKB) Field ID.

2.1 Self-reported Psychosis

Criteria for defining ‘Self-reported Psychosis’ cases:

- Endorsed “schizophrenia” [UKB Data-Coding 6 = 1289]; **OR** “mania/bipolar disorder/manic depression” [UKB Data-Coding 6 = 1291] at baseline or the subsequent two repeat assessments [ID 20002]

2.2 Antipsychotic Usage

The criteria for defining ‘Antipsychotic Usage’ cases:

- Self-reported taking antipsychotic medication at baseline or the subsequent two repeat assessments [ID 20003]. Antipsychotic codes [UKB Data-Coding 4]: 1140868170, 1140928916, 1141152848, 1140867444, 1140879658, 1140868120, 1141153490, 1140867304, 1141152860, 1140867168, 1141195974, 1140867244, 1140867152, 1140909800, 1140867420, 1140879746, 1141177762, 1140867456, 1140867952, 1140867150, 1141167976, 1140882100, 1140867342, 1140863416, 1141202024, 1140882098, 1140867184, 1140867092, 1140882320, 1140910358, 1140867208, 1140909802, 1140867134, 1140867306, 1140867210, 1140867398, 1140867078, 1140867218, 1141201792, 1141200458, 1140867136, 1140879750, 1140867180, 1140867546, 1140928260, 1140927956.

2.3 Bipolar (Smith)

The criteria for defining ‘Bipolar (Smith)’ cases is shown below, comprising the criteria for two bipolar phenotypes previously defined by Smith, et al. (2013)¹.

- Bipolar Type I (Mania) [ID 20126, Case Coding = 1]
 - Ever manic/hyper 2 days [4642] **OR** Ever irritable/argumentative for 2 days [4653]; **AND**

- At least 3 from 6156.01 (more active), 6156.02 (more talkative), 6156.03 (needed less sleep), and 6156.04 (more creative/more ideas); **AND**
- Duration of a week or more [5663]; **AND**
- Needed treatment or caused problems at work [5674]
- Bipolar Type II (Hypomania) [ID 20126, Case Coding = 2]
 - Ever manic/hyper 2 days [4642] **OR** Ever irritable/argumentative for 2 days [4653]; **AND**
 - At least 3 from 6156.01 (more active), 6156.02 (more talkative), 6156.03 (needed less sleep), and 6156.04 (more creative/more ideas); **AND**
 - Duration of a week or more [5663]

2.4 Hospital (ICD-10) Psychosis

Participants were classified as ‘Hospital (ICD-10) Psychosis’ cases if they were assigned any of the following primary [ID 41202] or secondary [ID 41204] ICD-10 codes between April 1997 and October 2016:

- Schizophrenia, schizotypal and delusional disorders: F20, F200, F201, F202, F203, F204, F205, F206, F208, F209, F21, F22, F220, F228, F229, F23, F230, F231, F232, F233, F238, F239, F24, F25, F250, F251, F252, F258, F259, F28, F29.
- Mood [affective] disorders (excluding Depression codes F32-F33): F30, F300, F301, F302, F308, F309, F31, F310, F311, F312, F313, F314, F315, F316, F317, F318, F319, F34, F340, F341, F348, F349, F38, F380, F381, F388, F39.

2.5 Psychosis (MHQ Screen)

Criteria for defining ‘Psychosis (MHQ Screen)’ cases:

- Endorsed the question (from the MHQ, Section A, screening questions): “Have you been diagnosed with one or more of the following mental health problems by a professional, even if you don’t have it currently?” [ID 20544] for:
 - “Schizophrenia” [UKB Data-Coding 1401 = 2]; **OR**
 - “Any other type of psychosis or psychotic illness” [UKB Data-Coding 1401 = 3]; **OR**
 - “Mania, hypomania, bipolar or manic-depression” [UKB Data-Coding 1401 = 10].

3 Derivation of Controls

3.1 Controls

Controls comprised all UK Biobank participants who did not meet the criteria for depression or psychosis indications as follows:

- Did not meet the criteria for any indication of depression, i.e.: ‘Lifetime Depression (MHQ)’, ‘Help-seeking’, ‘Depression (Smith)’, ‘Hospital (ICD-10)’, ‘Self-reported Depression’, or ‘Antidepressant Usage’; **AND**
- Did not meet the criteria for any indication of psychosis, i.e.: ‘Psychosis (MHQ Screen)’, ‘Bipolar (Smith)’, ‘Hospital (ICD-10) Psychosis’, ‘Self-reported Psychosis’, or ‘Antipsychotic Usage’; **AND**
- Did not endorse the question “Have you been diagnosed with one or more of the following mental health problems by a professional, even if you don’t have it currently?” [ID 20544] for depression [UKB Data-Coding 1401 = 11] in the MHQ, Section A, screening questions.

3.2 MHQ controls

MHQ controls comprised UK Biobank participants who completed the MHQ, met the same criteria as controls, and also met the following criteria:

- Did not endorse the question “Have you been diagnosed with one or more of the following mental health problems by a professional, even if you don’t have it currently?” [ID 20544] for any of the disorders coded 1 to 18 [UKB Data-Coding 1401] in the MHQ, Section A, screening questions. UKB Data-Coding 1401:
 - 1: Social anxiety or social phobia
 - 2: Schizophrenia
 - 3: Any other type of psychosis or psychotic illness
 - 4: A personality disorder
 - 5: Any other phobia
 - 6: Panic attacks
 - 7: Obsessive compulsive disorder
 - 10: Mania hypomania bipolar or manic-depression
 - 11: Depression
 - 12: Bulimia nervosa
 - 13: Psychological over-eating or binge-eating
 - 14: Autism, Aspergers or autistic spectrum disorder
 - 15: Anxiety nerves or generalized anxiety disorder

- 16: Anorexia nervosa
- 17: Agoraphobia
- 18: Attention deficit or attention deficit and hyperactivity disorder; **AND**
- Scored < 5 on the Patient Health Questionnaire 9-question version (PHQ-9)³, from Section B1 of the MHQ:
 - “Over the last 2 weeks, how often have you been bothered by any of the following problems?”
 - “a. Little interest or pleasure in doing things” [ID 20514]
 - “b. Feeling down, depressed, or hopeless” [ID 20510]
 - “c. Trouble falling or staying asleep, or sleeping too much” [ID 20534]
 - “d. Feeling tired or having little energy” [ID 20519]
 - “e. Poor appetite or overeating” [ID 20511]
 - “f. Feeling bad about yourself or that you are a failure or have let yourself or your family down” [ID 20507]
 - “g. Trouble concentrating on things, such as reading the newspaper or watching television” [ID 20508]
 - “h. Moving or speaking so slowly that other people could have noticed? Or the opposite —being so fidgety or restless that you have been moving around a lot more than usual” [ID 20518]
 - “i. Thoughts that you would be better off dead or of hurting yourself in some way” [ID 20513]
 - Scoring for items a. to i. on PHQ9: 4 = nearly every day, 3 = more than half the days, 2 = several days, 1 = not at all.
 - We subtracted 1 from each score and summed across a. to i. Thus, the minimum possible score on the PHQ9 was 0 (e.g. participant responded “not at all” for items a. to i.) and the maximum possible score on the PHQ9 was 27 (e.g. participant responded “nearly every day” for items a. to i.); **AND**
- Provided sufficient information in Section B (Lifetime Depression) of the MHQ. Participants who responded “prefer not to respond” were excluded from MHQ controls.

4 Demographic data

We used the baseline assessment for the following six variables to summarise demographic data in cases and controls.

- Age at recruitment [ID 21002]
- Sex [ID 31]
- Townsend deprivation index [ID 189] – referred to as SES in our study
- Body mass index [ID 21001]
- Smoking status [ID 20116]
 - UKB Data-Coding 90: -3 = Prefer not to answer, 0 = Never, 1 = Previous, 2 = Current
- Overall health rating [ID 2178]. Participants were asked "In general how would you rate your overall health?".
 - UKB Data-Coding 100508: 1 = Excellent, 2 = Good, 3 = Fair, 4 = Poor, -1 = Do not know, -3 = Prefer not to answer
 - We coded negative integers as NA to calculate the average health rating using valid responses

5 Count of individuals per phenotypic sub-category

5.1 Depression

Supplementary Tables 1 to 6 show the number of individuals who passed QC and met the criteria for each of the sub-categories of depression phenotypes (before screening for psychosis).

Supplementary Table 1: Lifetime Depression (MHQ)

MHQ	Number
Lifetime Depression (MHQ)	29,344

Supplementary Table 2: Help-seeking

Help-seeking	Number
Have you ever seen a GP for nerves, anxiety, tension or depression?	133,235
Have you ever seen a psychiatrist for nerves, anxiety, tension or depression?	45,302

Supplementary Table 3: Depression (Smith)

Depression (Smith)	Number
Single episode of probable major depression	6,154
Probable recurrent major depression (moderate)	11,654
Probable recurrent major depression (severe)	6,828

Supplementary Table 4: Hospital (ICD-10)

ICD-10 sub-codes	Primary	Secondary
F32 Depressive episode		
F32 Depressive episode	3	0
F32.0 Mild depressive episode	60	70
F32.1 Moderate depressive episode	198	60
F32.2 Severe depressive episode without psychotic symptoms	213	94
F32.3 Severe depressive episode with psychotic symptoms	213	74
F32.8 Other depressive episodes	12	25
F32.9 Depressive episode, unspecified	544	13,660
F33 Recurrent depressive disorder		
F33.0 Recurrent depressive disorder, current episode mild	38	12
F33.1 Recurrent depressive disorder, current episode moderate	133	18
F33.2 Recurrent depressive disorder, current episode severe without psychotic symptoms	106	30
F33.3 Recurrent depressive disorder, current episode severe with psychotic symptoms	94	13

F33.4 Recurrent depressive disorder, currently in remission	8	7
F33.8 Other recurrent depressive disorders	2	5
F33.9 Recurrent depressive disorder, unspecified	125	338

Supplementary Table 5: Self-reported Depression

Self-reported disorder	Number
Depression	23,628

Supplementary Table 6: Antidepressant usage

Medication	Number
amitriptyline	7,458
citalopram	6,957
fluoxetine	4,578
sertraline	1,833
venlafaxine	1,624
dosulepin	1,354
paroxetine	1,301
mirtazapine	1,121
escitalopram	711
trazodone	563
prozac 20mg capsule	544
seroxat 20mg tablet	540
cipralex 5mg tablet	349
duloxetine	354
lofepramine	296
clomipramine	257
nortriptyline	252
imipramine	197
dothiepin	148
cipramil 10mg tablet	132
amitriptyline hydrochloride+perphenazine 10mg/2mg tablet	90
prothiaden 25mg capsule	75
trimipramine	69
lustral 50mg tablet	60
reboxetine	39
zispin 30mg tablet	50
cymbalta 30mg gastro-resistant capsule	38
anafranil 10mg capsule	36
doxepin	29

moclobemide	24
phenelzine	26
fluvoxamine	27
yentreve 20mg gastro-resistant capsule	17
triptafen tablet	23
surmontil 10mg tablet	17
tranylcypromine	13
allegron 10mg tablet	5
edronax 4mg tablet	6
molipaxin 50mg capsule	4
mianserin	3
nardil 15mg tablet	4
faverin 50mg tablet	1
nefazodone	3
amitriptyline+chlordiazepoxide 12.5mg/5mg capsule	0
isocarboxazid	0
manerix 150mg tablet	1
maoi - tranylcypromine	1
sinequan 10mg capsule	2
tranylcypromine+trifluoperazine 10mg/1mg tablet	1
ludiomil 10mg tablet	1
norval 10mg tablet	1
tryptizol 10mg tablet	1

5.2 Psychosis

Supplementary Tables 7 to 11 show the number of individuals who passed QC and met the criteria for sub-categories of psychosis phenotypes. These individuals were excluded from analyses.

Supplementary Table 7: Psychosis (MHQ screen)

MHQ screening	Number
Schizophrenia	112
Any other type of psychosis or psychotic illness	483
Mania hypomania bipolar or manic-depression	649

Supplementary Table 8: Bipolar (Smith)

Bipolar (Smith)	Number
Probable bipolar disorder (type I)	614
Probable bipolar disorder (type II)	565

Supplementary Table 9: Hospital (ICD-10) Psychosis

ICD-10 sub-codes	Primary	Secondary
F20-F29 Schizophrenia, schizotypal and delusional disorders		
F20 Schizophrenia	2	1
F20.0 Paranoid schizophrenia	182	114
F20.1 Hebephrenic schizophrenia	5	1
F20.2 Catatonic schizophrenia	6	3
F20.3 Undifferentiated schizophrenia	4	0
F20.4 Postschizophrenic depression	3	0
F20.5 Residual schizophrenia	9	13
F20.6 Simple schizophrenia	2	4
F20.8 Other schizophrenia	6	5
F20.9 Schizophrenia, unspecified	109	422
F21 Schizotypal disorder	5	7
F22.0 Delusional disorder	83	135
F22.8 Other persistent delusional disorders	2	1
F22.9 Persistent delusional disorder, unspecified	15	10
F23 Acute and transient psychotic disorders	0	1
F23.0 Acute polymorphic psychotic disorder without symptoms of schizophrenia	15	1
F23.1 Acute polymorphic psychotic disorder with symptoms of schizophrenia	8	3
F23.2 Acute schizophrenia-like psychotic disorder	7	0

F23.3 Other acute predominantly delusional psychotic disorders	10	4
F23.8 Other acute and transient psychotic disorders	7	1
F23.9 Acute and transient psychotic disorder, unspecified	76	30
F24 Induced delusional disorder	2	0
F25.0 Schizoaffective disorder, manic type	34	7
F25.1 Schizoaffective disorder, depressive type	26	5
F25.2 Schizoaffective disorder, mixed type	10	7
F25.8 Other schizoaffective disorders	1	1
F25.9 Schizoaffective disorder, unspecified	52	68
F28 Other nonorganic psychotic disorders	2	2
F29 Unspecified nonorganic psychosis	77	120
F30-F39 Mood [affective] disorders		
F30.0 Hypomania	52	15
F30.1 Mania without psychotic symptoms	7	0
F30.2 Mania with psychotic symptoms	30	5
F30.8 Other manic episodes	2	1
F30.9 Manic episode, unspecified	43	27
F31.0 Bipolar affective disorder, current episode hypomanic	150	16
F31.1 Bipolar affective disorder, current episode manic without psychotic symptoms	116	13
F31.2 Bipolar affective disorder, current episode manic with psychotic symptoms	105	13
F31.3 Bipolar affective disorder, current episode mild or moderate depression	84	22
F31.4 Bipolar affective disorder, current episode severe depression without psychotic symptoms	44	7
F31.5 Bipolar affective disorder, current episode severe depression with psychotic symptoms	32	3
F31.6 Bipolar affective disorder, current episode mixed	40	9
F31.7 Bipolar affective disorder, currently in remission	25	10
F31.8 Other bipolar affective disorders	12	12
F31.9 Bipolar affective disorder, unspecified	204	828
F34.0 Cyclothymia	5	6
F34.1 Dysthymia	20	40
F34.8 Other persistent mood [affective] disorders	1	1
F34.9 Persistent mood [affective] disorder, unspecified	0	8
F38.0 Other single mood [affective] disorders	5	4
F38.1 Other recurrent mood [affective] disorders	0	1
F38.8 Other specified mood [affective] disorders	2	6

F39 Unspecified mood [affective] disorder	16	37
---	----	----

Supplementary Table 10: Self-reported Psychosis

Self-reported disorder	Number
Schizophrenia	432
Mania/bipolar disorder/manic depression	1,110

Supplementary Table 11: Antipsychotic Usage

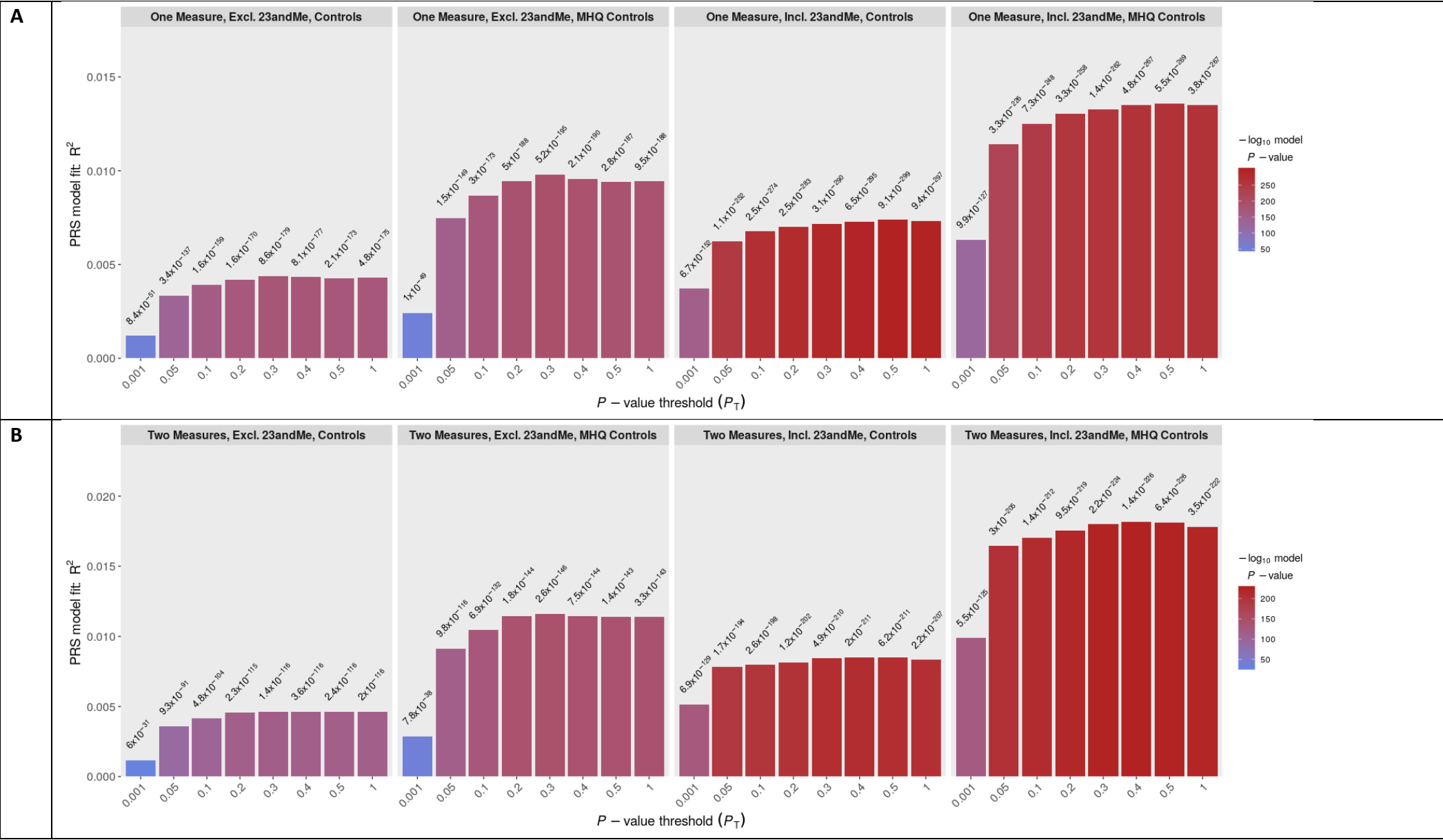
Medication	Number
prochlorperazine	551
olanzapine	431
quetiapine	236
risperidone	200
chlorpromazine	128
trifluoperazine	78
amisulpride	77
sulpiride	55
seroquel 25mg tablet	60
haloperidol	47
aripiprazole	44
stelazine 1mg tablet	50
depixol 3mg tablet	44
flupentixol	51
clozapine	29
promazine	29
risperdal 0.5mg tablet	26
moderate 12.5mg/0.5ml oily injection	25
fluanxol 500micrograms tablet	23
flupenthixol	15
zyprexa 2.5mg tablet	16
zuclopenthixol	16
clopixol 2mg tablet	14
largactil 10mg tablet	10
abilify 5mg tablet	8
fluphenazine	8
haldol 5mg tablet	5
serenace 500micrograms capsule	11
clozaril 25mg tablet	8
cpz - chlorpromazine	6

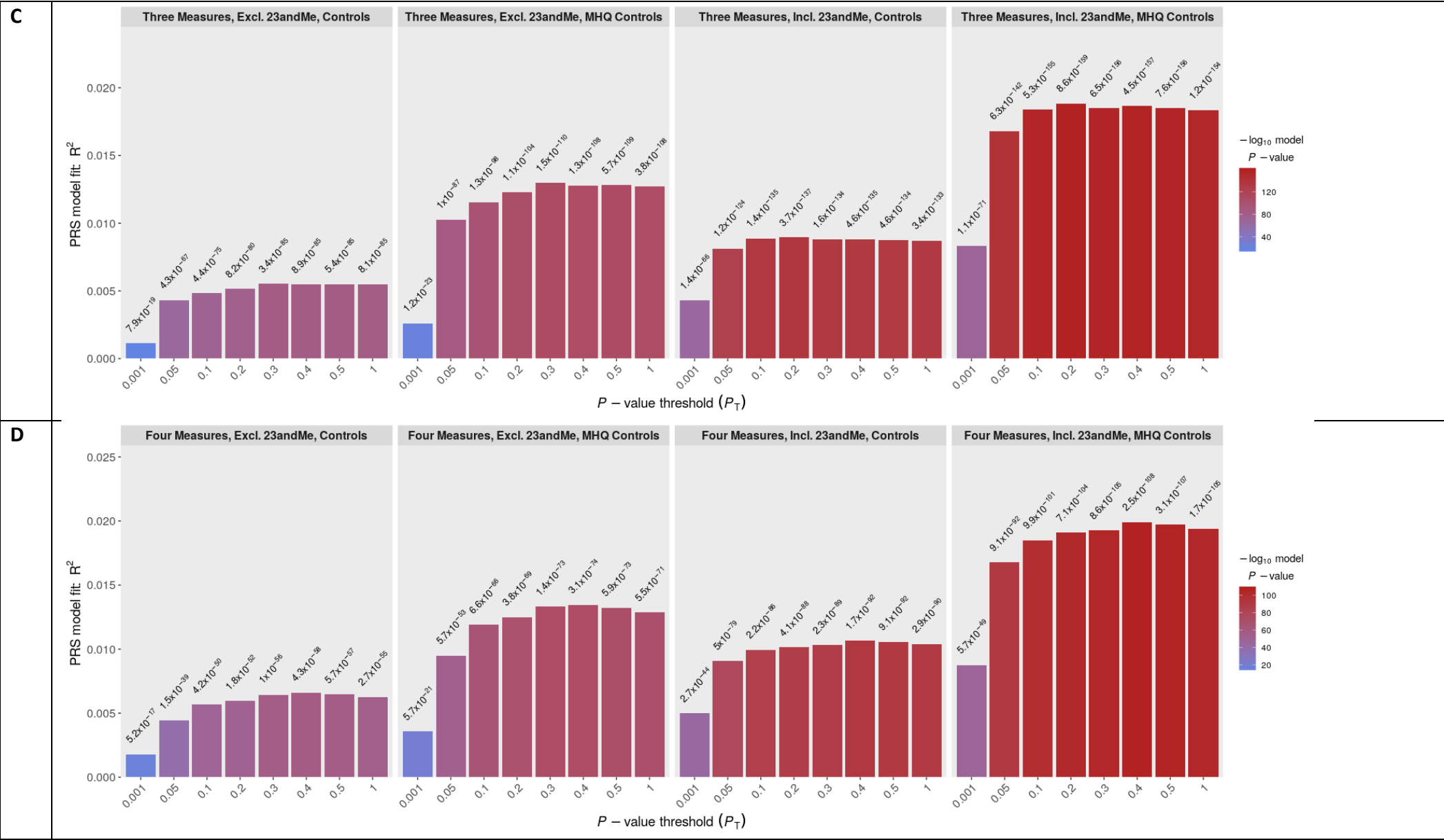
perphenazine	5
levomepromazine	6
pericyazine	5
dolmatil 200mg tablet	3
fentazin 2mg tablet	3
fluphenazine decanoate	3
benperidol	3
pimozide	3
zaponex 25mg tablet	1
denzapine 25mg tablet	1
neulactil 2.5mg tablet	1
thioridazine	1
dozic 1mg/ml oral liquid	1
fluspirilene	1
panadeine co tablet	1
sertindole	0

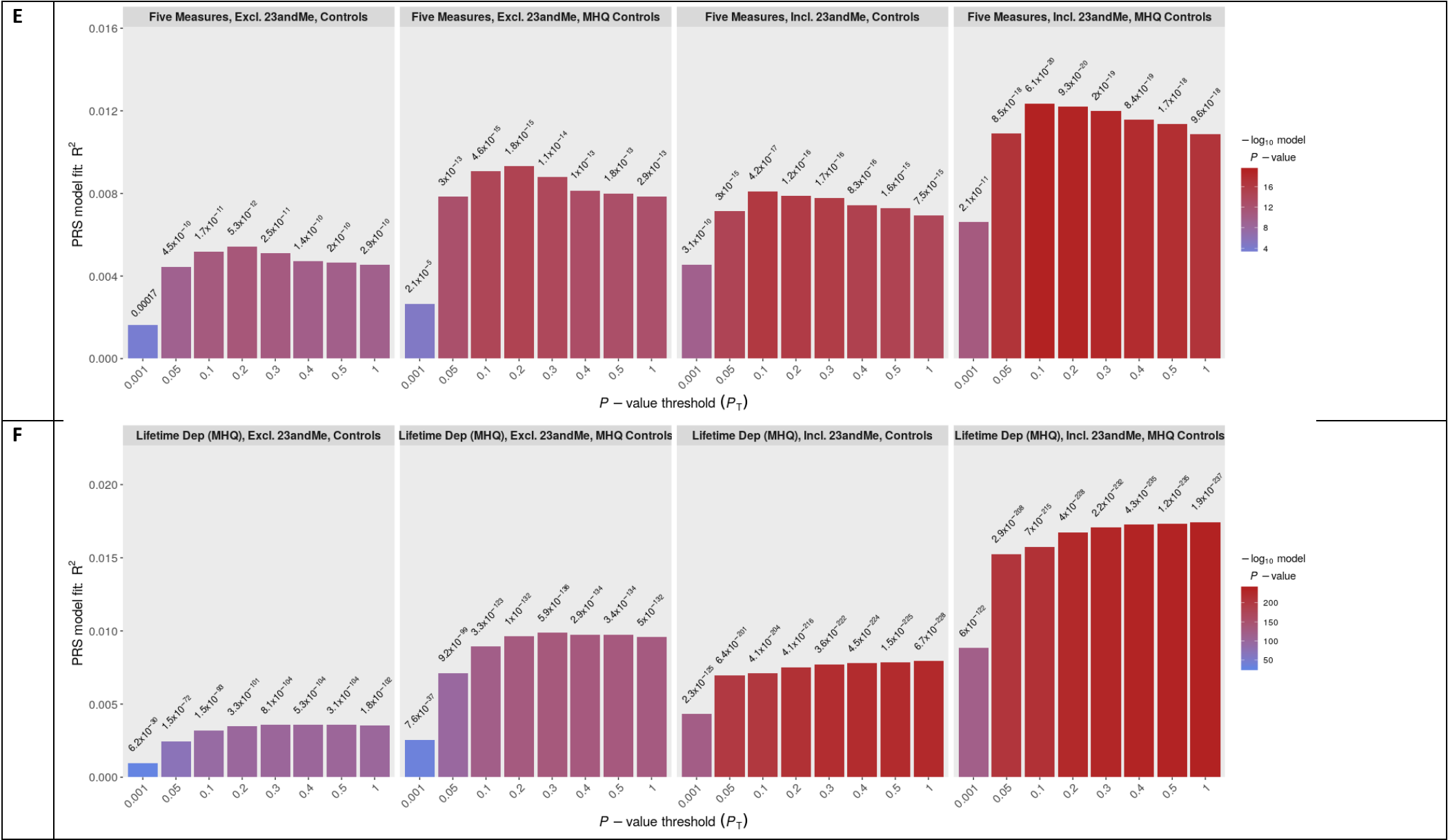
6 Polygenic risk score analyses results

Supplementary Table 12: Results for tests of association between PRS and depression phenotypes.

Base GWAS	Controls	Cases	Optimal p-value threshold (P_T)	No. SNPs used to construct PRS at (P_T)	Population Prevalence	Adjusted Variance explained (Liability R^2)	Coefficient	Observed p-value	Empirical p-value
PGC MDD Excl. 23andMe	Controls	One Measure	0.3	45,292	0.15	0.52%	0.14	9e-179	1e-04
		Two Measures	0.3	45,292	0.15	0.77%	0.17	1e-116	1e-04
		Three Measures	0.3	45,292	0.15	1.21%	0.21	3e-85	1e-04
		Four Measures	0.4	55,560	0.15	1.76%	0.25	4e-58	1e-04
		Five Measures	0.2	33,491	0.15	1.45%	0.28	5e-12	1e-04
		Lifetime Depression (MHQ)	0.5	64,483	0.15	0.54%	0.14	3e-104	1e-04
PGC MDD Excl. 23andMe	MHQ controls	One Measure	0.3	45,292	0.15	0.91%	0.19	5e-195	1e-04
		Two Measures	0.3	45,292	0.15	1.25%	0.22	3e-146	1e-04
		Three Measures	0.3	45,292	0.15	1.77%	0.25	1e-110	1e-04
		Four Measures	0.4	55,560	0.15	2.39%	0.30	3e-74	1e-04
		Five Measures	0.2	33,491	0.15	1.98%	0.33	2e-15	1e-04
		Lifetime Depression (MHQ)	0.3	45,292	0.15	0.96%	0.18	6e-136	1e-04
PGC MDD Incl. 23andMe	Controls	One Measure	0.5	67,956	0.15	0.88%	0.18	9e-299	1e-04
		Two Measures	0.4	59,001	0.15	1.41%	0.23	2e-211	1e-04
		Three Measures	0.2	36,975	0.15	1.96%	0.26	4e-137	1e-04
		Four Measures	0.4	59,001	0.15	2.83%	0.32	2e-92	1e-04
		Five Measures	0.1	22,831	0.15	2.16%	0.34	4e-17	1e-04
		Lifetime Depression (MHQ)	1.0	99,216	0.15	1.20%	0.20	7e-228	1e-04
PGC MDD Incl. 23andMe	MHQ controls	One Measure	0.5	67,956	0.15	1.26%	0.22	5e-269	1e-04
		Two Measures	0.4	59,001	0.15	1.96%	0.27	1e-226	1e-04
		Three Measures	0.2	36,975	0.15	2.56%	0.31	9e-159	1e-04
		Four Measures	0.4	59,001	0.15	3.54%	0.36	2e-108	1e-04
		Five Measures	0.1	22,831	0.15	2.62%	0.37	6e-20	1e-04
		Lifetime Depression (MHQ)	1.0	99,216	0.15	1.70%	0.24	2e-237	1e-04

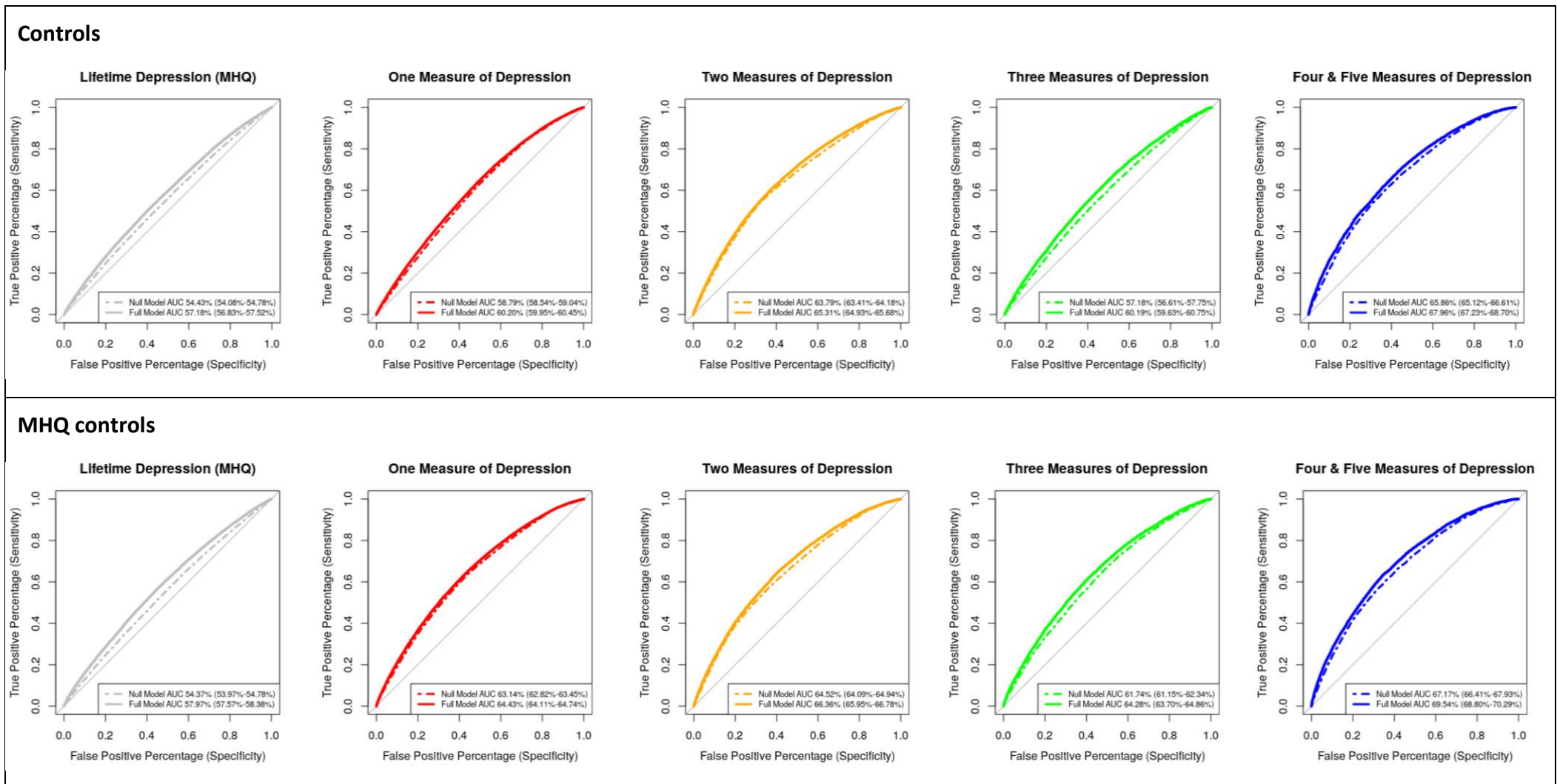






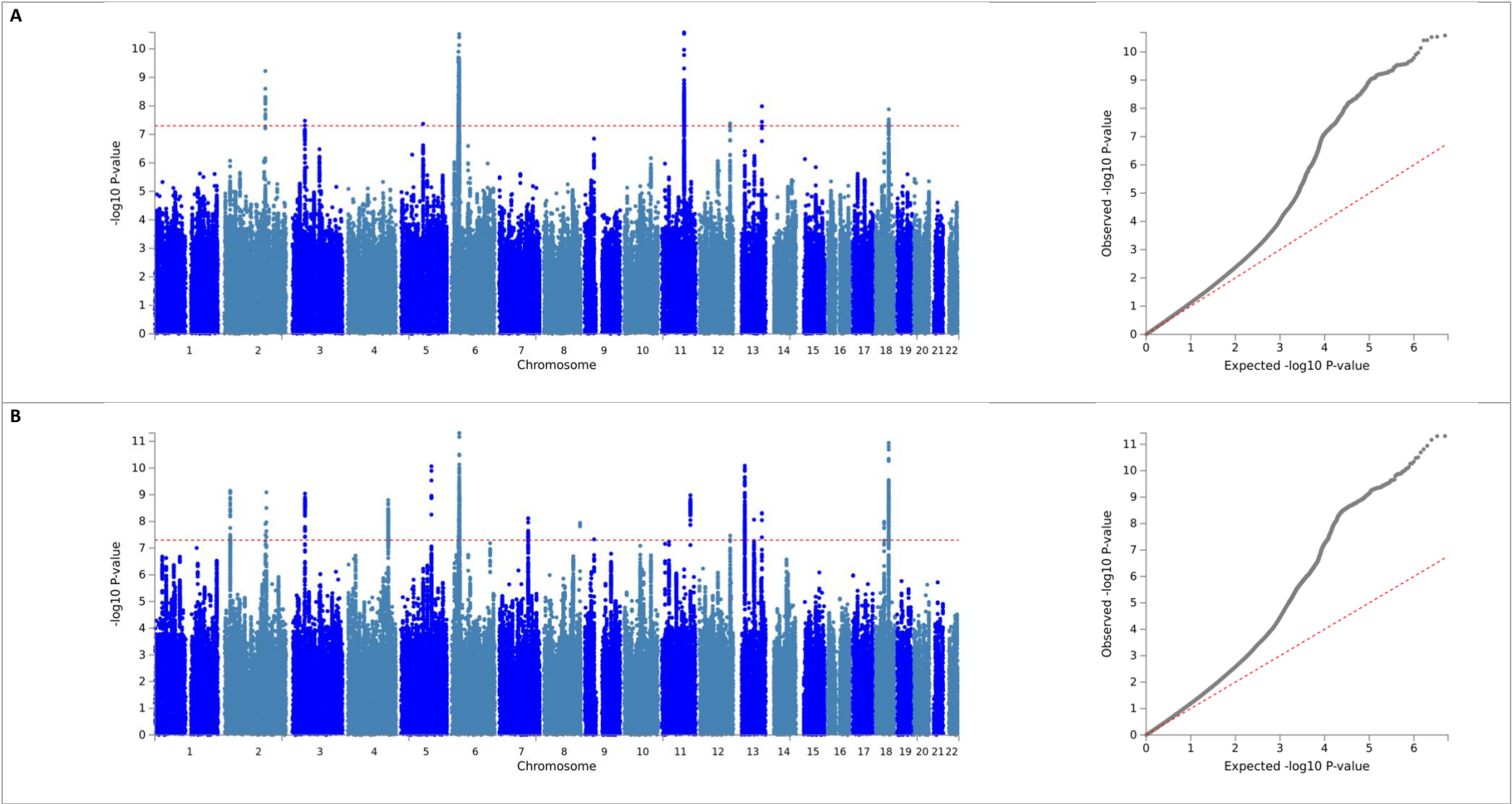
Supplementary Figure 1: Association between PRS and depression phenotypes across eight P_T . **Row A** = One Measure, **Row B** = Two Measures, **Row C** = Three Measures, **Row D** = Four Measures, **Row E** = Five Measures, **Row F** = Lifetime Depression (MHQ). Excl. 23andMe = PRS calculated using summary statistics from the sub-set of the PGC MDD sample (excluding UKB and 23andMe). Incl. 23andMe = PRS calculated using summary statistics from the full PGC MDD sample (excluding UKB). Observed p-values are shown atop each bar.

7 Area Under the Curve Analyses

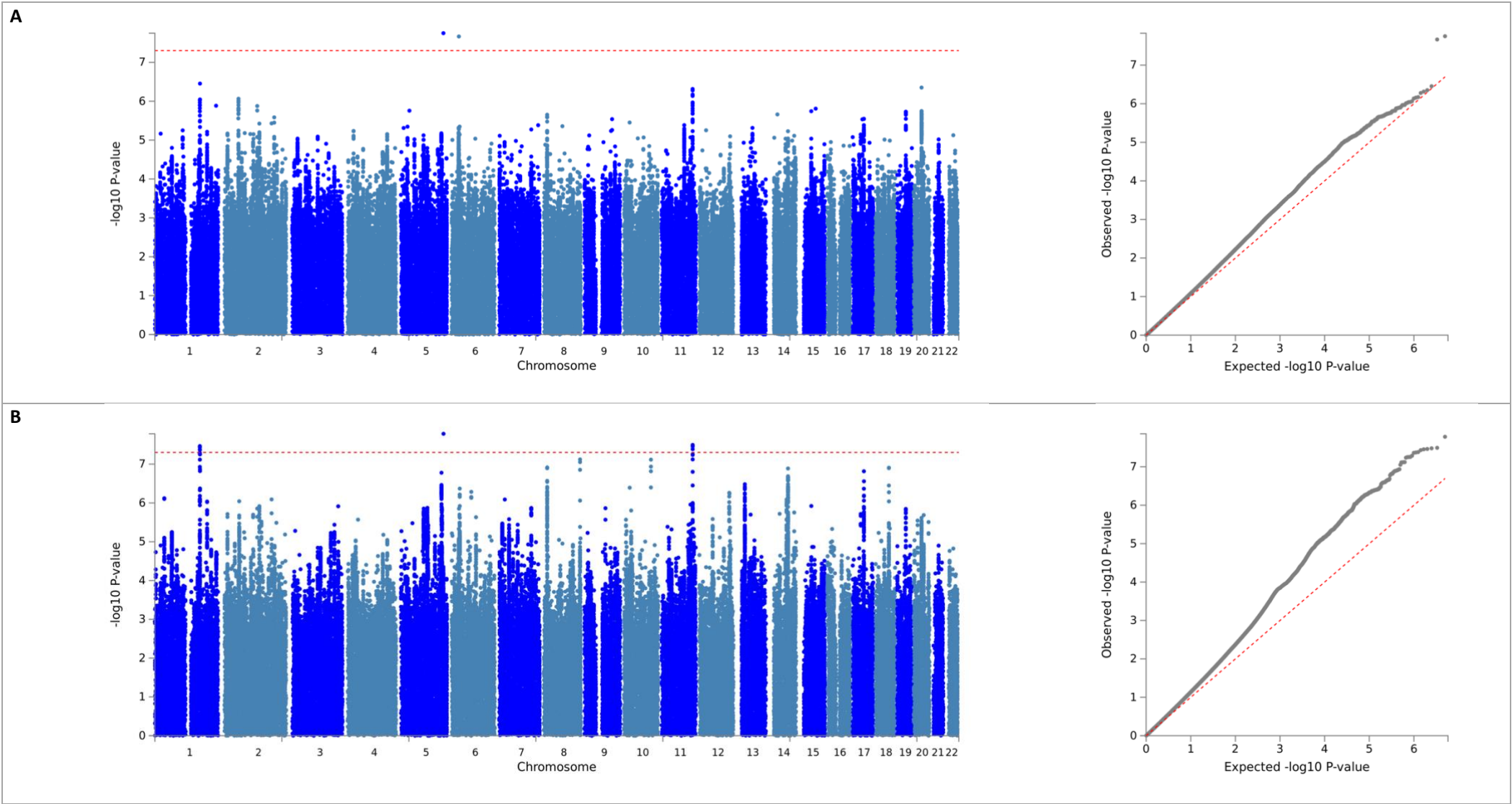


Supplementary Figure 2: ROC plots. AUC estimates from Null Models (Phenotype ~ 6PCs + Genotyping Batch + Centre of Assessment) and Full Models (Phenotype ~ PRS + 6PCs + Genotyping Batch + Centre of Assessment). PRS calculated using PGC MDD summary statistics including 23andMe at the P_T identified for each phenotype in PRSice analysis. Logistic regressions performed on depression phenotypes shown in plot titles, using controls (upper panel) and MHQ controls (lower panel).

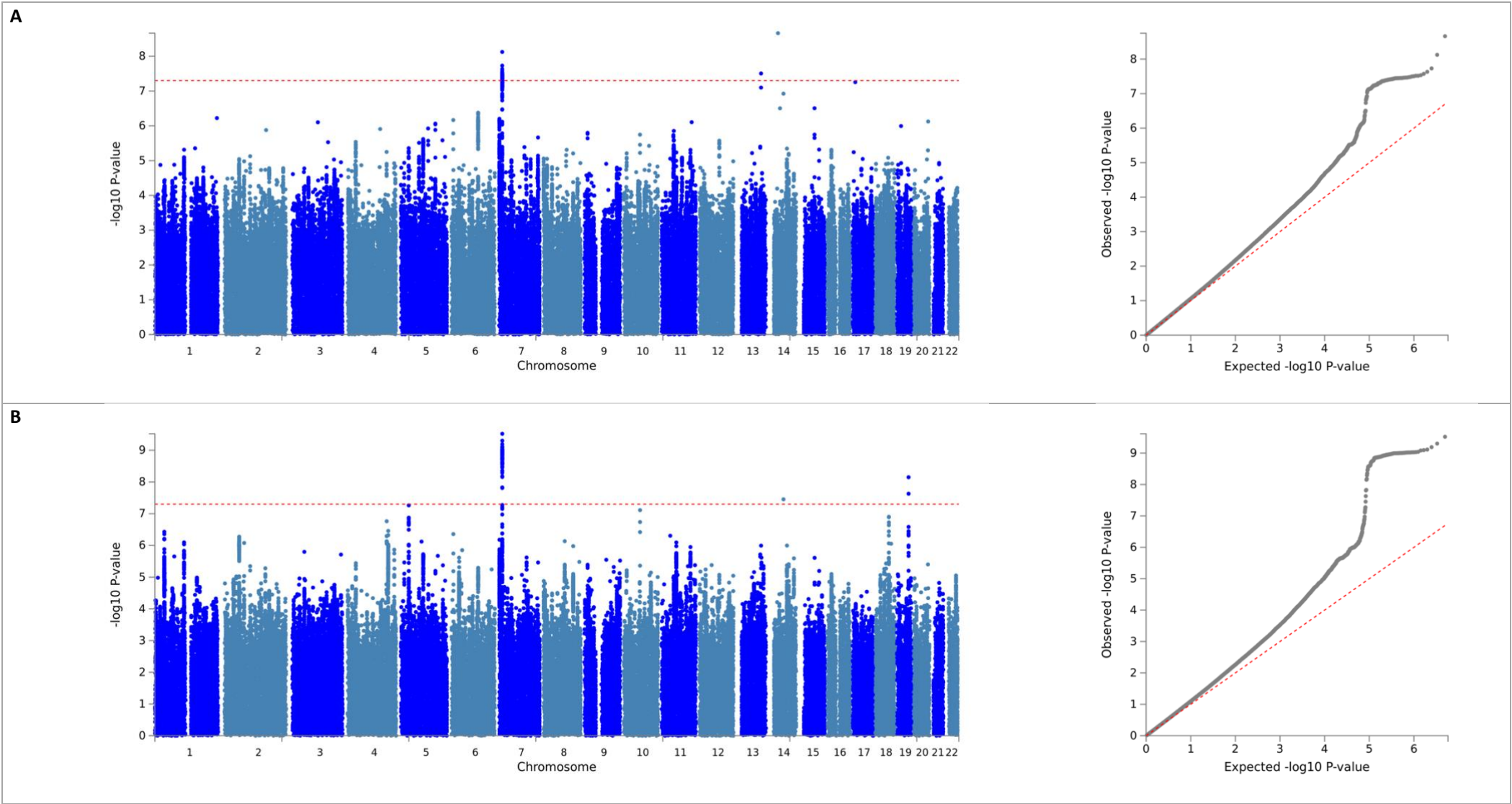
8 GWAS results



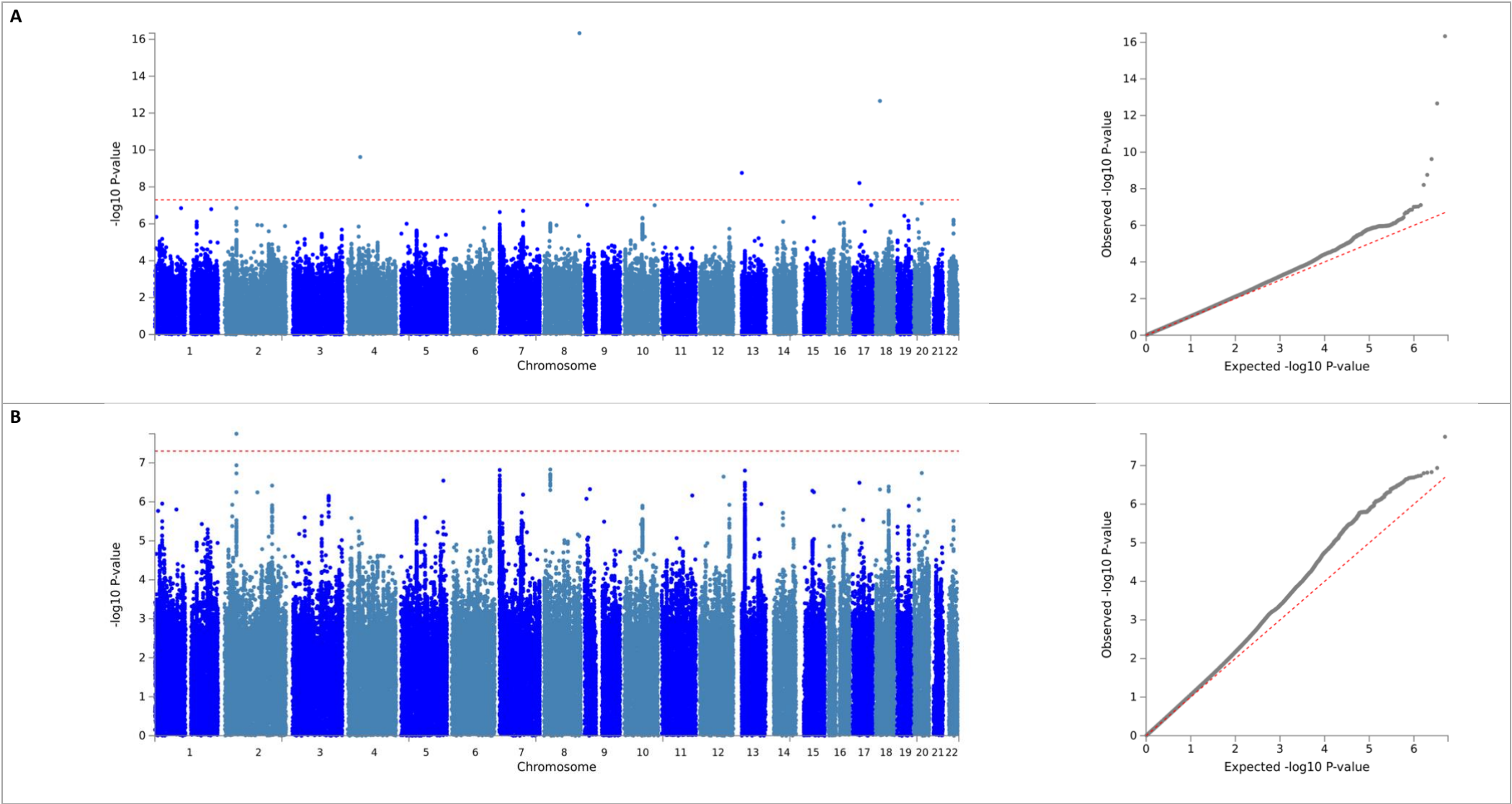
Supplementary Figure 3: Manhattan and QQ plots from GWAS of One Measure of Depression. **A:** controls, **B:** MHQ controls.



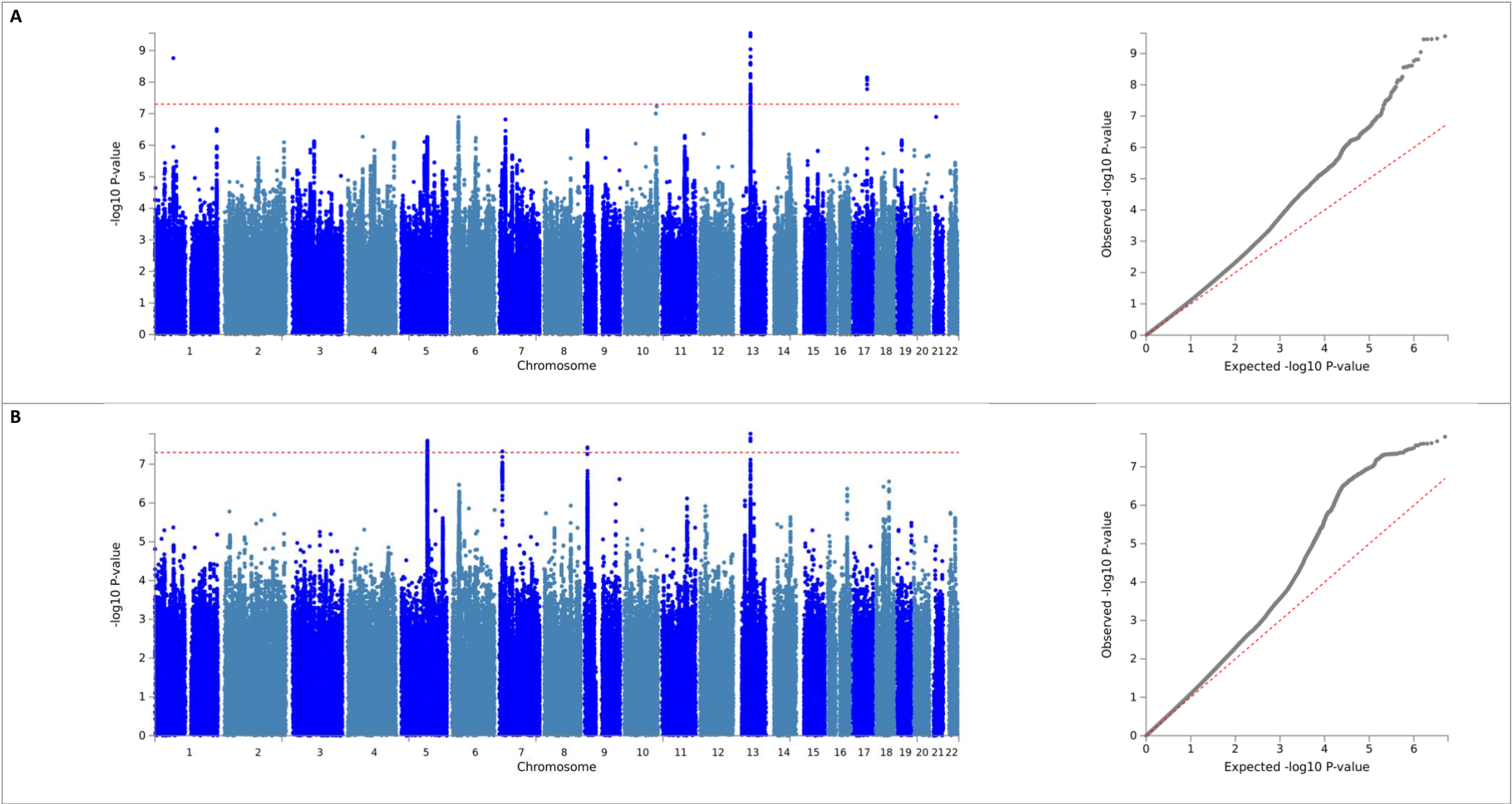
Supplementary Figure 4: Manhattan and QQ plots from GWAS of Two Measures of Depression. **A:** controls, **B:** MHQ controls.



Supplementary Figure 5: Manhattan and QQ plots from GWAS of Three Measures of Depression. **A:** controls, **B:** MHQ controls.



Supplementary Figure 6: Manhattan and QQ plots from GWAS of Four & Five Measure of Depression. **A:** controls, **B:** MHQ controls.



Supplementary Figure 7: Manhattan and QQ plots from GWAS of Lifetime Depression (MHQ). **A:** controls, **B:** MHQ controls.

Supplementary Table 13: GWAS and h^2_{SNP} results: depression cases compared to **controls**.

Parameter	Depression phenotype in the UKB				
	Lifetime Depression (MHQ)	One Measure	Two Measures	Three Measures	Four & Five Measures
GWAS results (BGENIE)					
No. SNPs in GWAS	9,940,917	9,940,917	9,940,917	9,940,917	9,940,917
Mean χ^2	1.162	1.182	1.115	1.083	1.053
Lambda GC	1.138	1.151	1.103	1.076	1.045
Max χ^2	39.807	44.425	31.343	33.399	70.477
No. Significant SNPs	40	692	1	67	5
Heritability results (LDSC)					
Population Prevalence	0.15	0.15	0.15	0.15	0.15
Sample Prevalence	0.110	0.197	0.084	0.040	0.020
No. SNPs post-munge	7,353,982	7,353,982	7,353,982	7,353,982	7,353,982
No. SNPs post LD merge	1,184,555	1,184,555	1,184,555	1,184,555	1,184,555
Liability scale h^2 (SE)	0.1134 (0.008)	0.0723 (0.0047)	0.1121 (0.0093)	0.1874 (0.0183)	0.2086 (0.0289)
Lambda	1.1619	1.194	1.127	1.0988	1.0557
Mean χ^2	1.1949	1.2186	1.1379	1.1058	1.0599
Intercept (SE)	1.0047 (0.0076)	1. (0.0076)	0.9954 (0.0068)	0.9923 (0.0069)	0.9971 (0.0068)

Supplementary Table 14: GWAS and h^2_{SNP} results: depression cases compared to **MHQ** controls.

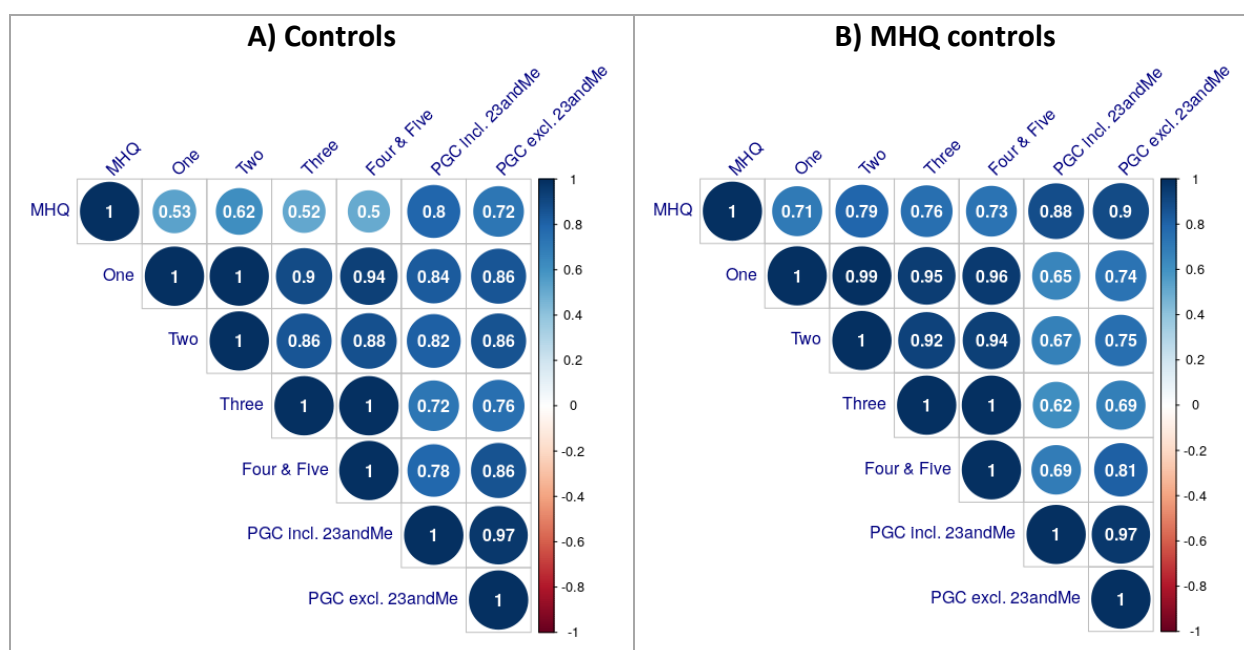
Parameter	Depression phenotype in the UKB				
	Lifetime Depression (MHQ)	One Measure	Two Measures	Three Measures	Four & Five Measures
GWAS results (BGENIE)					
No. SNPs in GWAS	9,940,917	9,940,917	9,940,917	9,940,917	9,940,917
Mean χ^2	1.137	1.282	1.193	1.137	1.086
Lambda GC	1.12	1.226	1.171	1.125	1.077
Max χ^2	31.349	47.732	30.521	39.661	31.705
No. Significant SNPs	52	786	8	85	1
Heritability results (LDSC)					
Population Prevalence	0.15	0.15	0.15	0.15	0.15
Sample Prevalence	0.333	0.497	0.270	0.144	0.077
No. SNPs post-munge	7,353,982	7,353,982	7,353,982	7,353,982	7,353,982
No. SNPs post LD merge	1,184,555	1,184,555	1,184,555	1,184,555	1,184,555
Liability scale h^2 (SE)	0.1268 (0.0091)	0.1729 (0.0091)	0.2259 (0.0132)	0.3315 (0.0212)	0.336 (0.0337)
Lambda	1.1428	1.2831	1.207	1.1587	1.0895
Mean χ^2	1.1599	1.3391	1.2293	1.1697	1.0966
Intercept (SE)	0.9984 (0.0071)	1.0136 (0.0085)	1.0014 (0.0074)	0.9911 (0.0072)	0.9998 (0.007)

9 Genetic Correlations

Supplementary Table 15: Genetic correlations between UKB and PGC depression phenotypes. PGC Incl. 23andMe = summary statistics from the full PGC MDD sample (excluding UKB). PGC excl. 23andMe = summary statistics from the sub-set of the PGC MDD sample with self-reported cases removed (excluding UKB and 23andMe). Pairwise r_G estimates were calculated using summary statistics generated from GWASs of UKB depression phenotypes using controls and MHQ controls.

Phenotype 1	Phenotype 2	r_G	95% CIs	P-value	r_G	95% CIs	P-value
		Controls			MHQ controls		
Lifetime Depression (MHQ)	One Measure	0.53	0.46 - 0.60	3e-48	0.71	0.66 - 0.76	3e-152
Lifetime Depression (MHQ)	Two Measures	0.62	0.53 - 0.71	1e-43	0.79	0.73 - 0.85	7e-138
Lifetime Depression (MHQ)	Three Measures	0.52	0.42 - 0.62	4e-26	0.76	0.68 - 0.84	2e-85
Lifetime Depression (MHQ)	Four and Five Measures	0.50	0.36 - 0.64	1e-12	0.73	0.62 - 0.84	1e-37
Lifetime Depression (MHQ)	PGC Incl. 23andMe	0.80	0.74 - 0.86	2e-140	0.88	0.80 - 0.96	1e-112
Lifetime Depression (MHQ)	PGC excl. 23andMe	0.72	0.63 - 0.81	9e-57	0.90	0.80 - 1.00	2e-65
One Measure	Two Measures	1.00	0.92 - 1.08	6e-118	0.99	0.95 - 1.03	0e+00
One Measure	Three Measures	0.90	0.81 - 0.99	2e-76	0.95	0.90 - 1.00	1e-260
One Measure	Four and Five Measures	0.94	*0.79 - 1.09	9e-33	0.96	*0.87 - 1.05	2e-93
One Measure	PGC Incl. 23andMe	0.84	0.78 - 0.90	5e-167	0.65	0.60 - 0.70	5e-126
One Measure	PGC excl. 23andMe	0.86	0.77 - 0.95	3e-79	0.74	0.66 - 0.82	2e-78
Two Measures	Three Measures	0.86	0.74 - 0.98	1e-43	0.92	0.85 - 0.99	5e-158
Two Measures	Four and Five Measures	0.88	0.70 - 1.06	1e-21	0.94	0.83 - 1.05	3e-64
Two Measures	PGC Incl. 23andMe	0.82	0.75 - 0.89	1e-106	0.67	0.61 - 0.73	1e-110
Two Measures	PGC excl. 23andMe	0.86	0.76 - 0.96	6e-68	0.75	0.67 - 0.83	1e-81
Three Measures	Four and Five Measures	*1.01	0.81 - 1.21	2e-22	*1.01	0.89 - 1.13	6e-61
Three Measures	PGC Incl. 23andMe	0.72	0.64 - 0.80	7e-76	0.62	0.57 - 0.67	1e-107
Three Measures	PGC excl. 23andMe	0.76	0.64 - 0.88	4e-37	0.69	0.60 - 0.78	4e-50
Four and Five Measures	PGC Incl. 23andMe	0.78	0.65 - 0.91	6e-34	0.69	0.60 - 0.78	1e-50
Four and Five Measures	PGC excl. 23andMe	0.86	*0.70 - 1.02	6e-25	0.81	0.69 - 0.93	2e-39
PGC Incl. 23andMe	PGC excl. 23andMe	0.97	0.94 - 1.00	0e+00	0.97	0.94 - 1.00	0e+00

*LDSC is not a bounded estimator and can produce estimates outside the range of -1, 1 when standard errors are large due to small samples. This issue is discussed in the LDSC GitHub issue log: <https://github.com/bulik/ldsc/issues/89>



Supplementary Figure 8: Genetic correlation matrix. Circle sizes correspond to the magnitude of correlation, increasing as r_G approaches 1. MHQ = Lifetime Depression (MHQ). One, Two, Three, Four & Five = cases determined by number of observed depression measures. PGC Incl. 23andMe = summary statistics from the full PGC MDD sample (excluding UKB). PGC excl. 23andMe = summary statistics from the sub-set of the PGC MDD sample with self-reported cases removed (excluding UKB and 23andMe). Summary statistics used to estimate r_G were generated from GWASs of UKB depression phenotypes using controls (left matrix) and MHQ controls (right matrix).

10 References

1. Smith DJ, Nicholl BI, Cullen B, Martin D, Ul-Haq Z, Evans J, et al. Prevalence and Characteristics of Probable Major Depression and Bipolar Disorder within UK Biobank: Cross-Sectional Study of 172,751 Participants. Potash JB, editor. PLOS ONE. 2013 Nov 25;8(11):e75362.
2. Davis KAS, Coleman JRI, Adams M, Allen N, Breen G, Cullen B, et al. Mental health in UK Biobank – development, implementation and results from an online questionnaire completed by 157 366 participants: a reanalysis. BJPsych Open. Cambridge University Press; 2020 Mar 1;6(2):e18.
3. Kroenke K, Spitzer RL, Williams JBW, Löwe B. The Patient Health Questionnaire Somatic, Anxiety, and Depressive Symptom Scales: a systematic review. General Hospital Psychiatry. 2010 Jul;32(4):345–59.