

Supplemental Materials

Dougan S, Okun N, Bellai-Dussault K, Meng L, Howley H, Huang T, Reszel J, Lanes A, Walker MC, Armour CM. Performance of a universally offered prenatal screening program incorporating cfDNA in Ontario, Canada: a descriptive population-based cohort study of 280,000 pregnancies.

Figure S1: Prenatal Screening Ontario is housed within Better Outcomes Registry and Network (BORN) Ontario, the province's maternal, newborn, and child prescribed registry.

Figure S2a: Data Assets of Prenatal Screening Ontario (PSO).

Figure S2b: Ontario's prenatal screening program offered a variety of screening and diagnostic modalities during the study period.

Table S1: MMS modalities used by Ontario's publicly funded prenatal screening program for pregnancies with an estimated due date between September 1, 2016 and March 31, 2019.

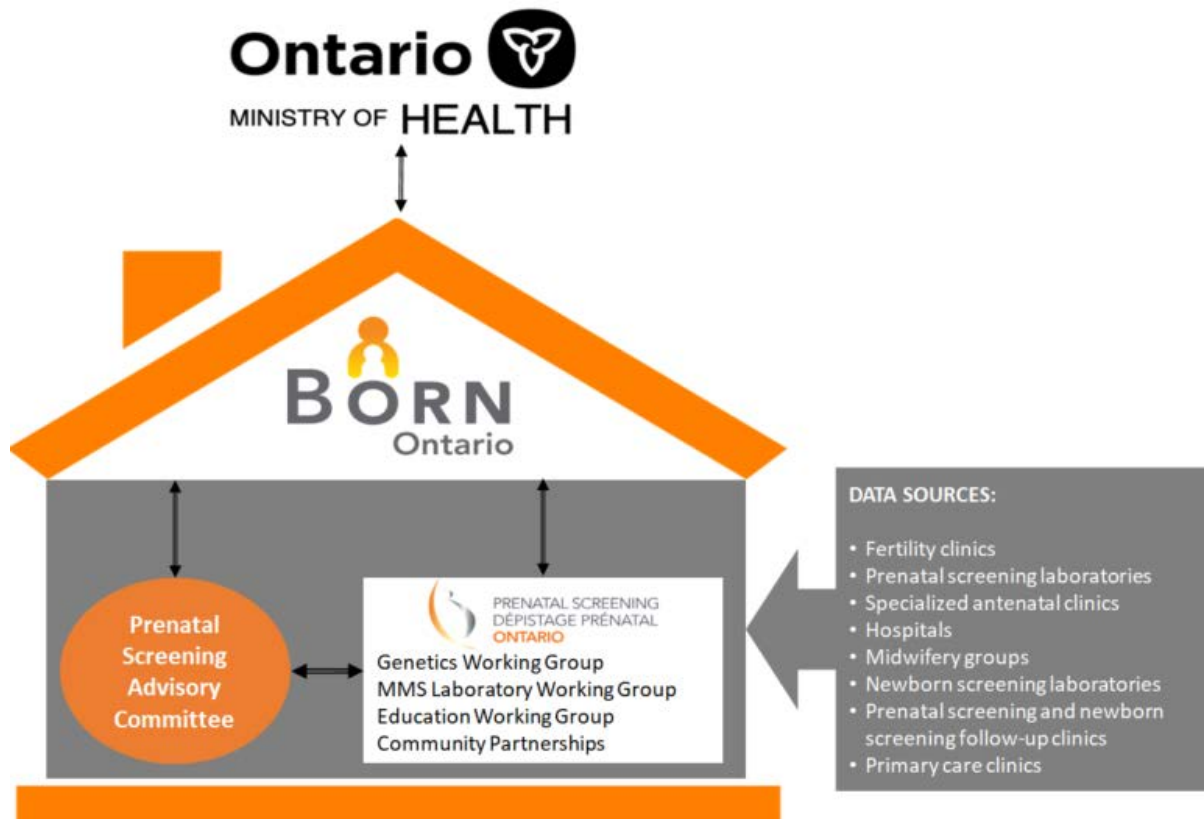


Figure S1: Prenatal Screening Ontario is housed within Better Outcomes Registry and Network (BORN) Ontario, the province’s maternal, newborn, and child prescribed registry. PSO operates within BORN Ontario’s policies and procedures, including those related to privacy and security. The BORN Information System captures routinely collected data for every pregnancy and birth in the province from a variety of data sources and across multiple modalities, settings, providers, and time points. As part of its mandate, PSO accesses these data to evaluate real-world performance of prenatal screening services across Ontario (see Supplemental Figure 1a for PSO data assets).

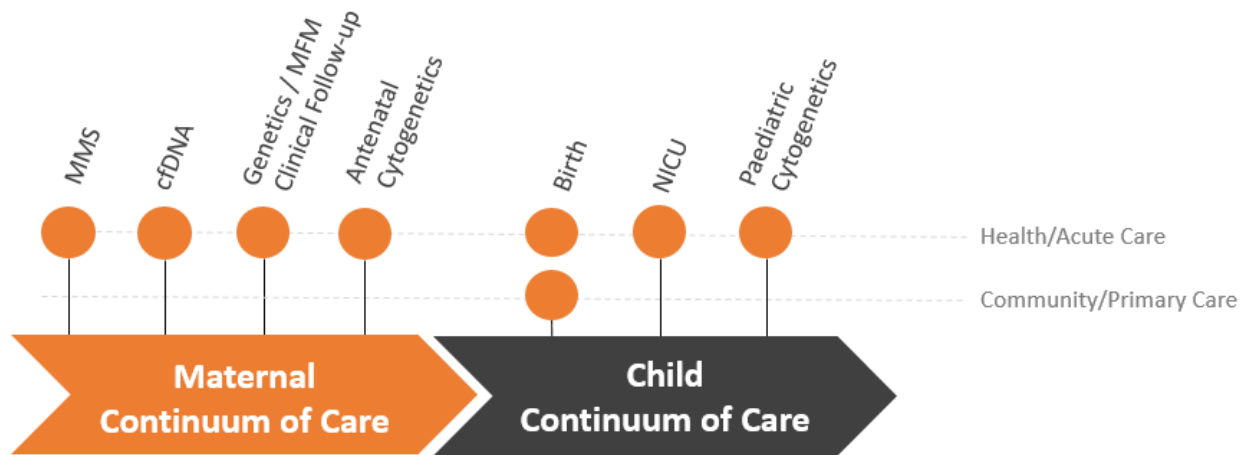


Figure S2a: Data Assets of Prenatal Screening Ontario (PSO). The Better Outcomes Registry and Network (BORN) Information System contains maternal-child health data for every birth in the province of Ontario – almost 1.5 million babies to date (with 2,088 discrete elements). PSO uses data from a variety of sources to capture and analyze routinely collected pregnancy and birth data. The figure only includes the subset of BORN Ontario data assets used by PSO. MMS: multiple marker screening; *cfDNA*: cell-free DNA screening; NICU: neonatal intensive care.

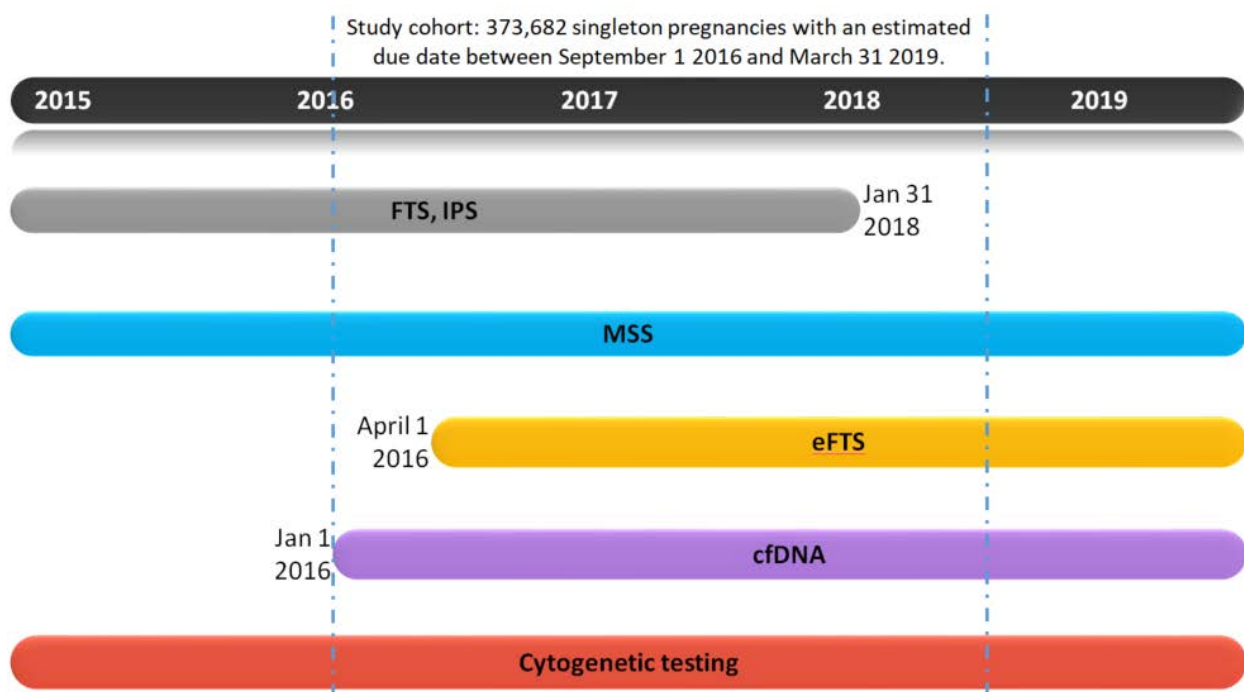


Figure S2b: Ontario's prenatal screening program offered a variety of screening and diagnostic modalities during the study period. Coloured bars represent the time period each modality was offered. The start and end of the study period is indicated by vertical dashed lines. FTS: first trimester screening; IPS: integrated prenatal screening; MMS: multiple marker screening; eFTS: enhanced first trimester screening; cfDNA: cell-free DNA screening.

MMS Modality	Serum Biomarkers	Ultrasound Biomarker	Screen-positive Cut-off*
enhanced first trimester screening (eFTS)	First trimester PAPP-A, AFP, hCG, +/- PIGF	Nuchal translucency	$\geq 1/350$ for T21 $\geq 1/200$ for T18
First trimester screening (FTS)	First trimester PAPP-A, hCG	Nuchal translucency	$\geq 1/350$ for T21 $\geq 1/200$ for T18
Integrated prenatal screening (IPS)	First trimester PAPP-A, hCG/ free β -hCG Second trimester AFP, hCG, UE3	Nuchal translucency	$\geq 1/200$ for T21 $\geq 1/200$ for T18
Maternal serum screening (MSS)	Second trimester AFP, hCG, UE3 and inhibin A	None	$\geq 1/200$ for T21 $\geq 1/200$ for T18

*Chance at term that the pregnancy is affected by one or more of the screened conditions based on MMS results.

Table S1: MMS modalities used by Ontario's publicly funded prenatal screening program for pregnancies with an estimated due date between September 1, 2016 and March 31, 2019. MMS: multiple marker screening; PAPP-A: pregnancy-associated plasma protein A; AFP: alpha-fetoprotein; hCG: human chorionic gonadotropin; PIGF: placental growth factor; UE3: unconjugated estriol.