

Supplementary Appendix

This Appendix has been provided by the authors to give readers additional information about their work.

Supplement to: Suzane Ramos da Silva, et al., Broad SARS-CoV-2 cell tropism and immunopathology in lung tissues from fatal COVID-19.

9 **Supplementary Appendix to Manuscript Entitled**

10

11 **Broad SARS-CoV-2 cell tropism and immunopathology in lung tissues from**
12 **fatal COVID-19**

13

14 **Table of contents**

15	Supplementary figure legends	3
16	Supplementary figure S1	3
17	Supplementary figure S2	4
18	Supplementary figure S3	4
19	Supplementary figure S4	4
20	Supplementary figure S5	5
21	Supplementary figure S6	5
22	Supplementary figure S7	6
23	Supplementary figure S8	6
24	Supplementary figure S9	7
25	Supplementary table S1	8
26	Supplementary table S2	9

27

Supplementary figure legends

Figure S1: Hematoxylin-eosin (H&E) and immunohistochemistry (IHC)

images of lung tissues from five COVID-19 patients.

Shown are H&E staining illustrating significant areas of lung tissues for all cases described in the study (Panel A). Case 1: Acute and organizing diffuse alveolar damage (DAD). Airspace filling with granulation-like tissue admixed with rare scattered hyaline membranes (top image, black arrow). Mild perivascular lymphocytic inflammation, but no vasculitis is seen (100x). Lymphocytes are indicated with red arrows (bottom image, 600x). Case 2: Lung parenchyma with hemorrhagic infarct. Thromboembolus in the right main pulmonary artery was grossly identified (top image, 100x). Langhans giant cell can be observed (asterisk, bottom image, 600x). Case 3: Acute DAD damage with hyaline membranes, atypical pneumocytes and scattered lymphocytes (top image, 100x). Presence of hemosiderin-laden macrophage (red arrow, bottom image, 600x). Case 4: Early exudative phase of DAD showing vascular congestion and rare hyaline membranes (black arrow, top image, 100x). Presence of lymphocytes (white arrow) and macrophages (red arrow) infiltration (bottom image, 600x). Case 5: DAD with hyaline membranes, atypical pneumocytes and scattered lymphocytes (top image, 100x). Presence of alveolar macrophages (asterisk) (bottom image, 600x). Shown are IHC detection images of SARS-CoV-2 infection using antibodies against spike protein (receptor binding domain, RBD) or nucleocapsid (NC) protein (100x) (Panel B). Different immune cells infected by SARS-CoV-2 were observed including monocytes (white arrow), macrophages

(black arrow) and lymphocytes (black arrowhead) in all cases (600x). Shown are IHC detection images of ACE2 protein expression in all lung tissues (Panel C). Different immune cells identified as lymphocytes (black arrow in case 1) (bottom image, 600x), and monocytes (black arrowhead), macrophages (black arrow) and neutrophils (red arrowhead) illustrated in case 2 (bottom image, 600x). A monocyte not expressing ACE2 (black arrow) is seen side-by-side with a neutrophil expressing ACE2 (black arrowhead) in case 5 (bottom image, 600x).

Figure S2: IHC staining of markers of immune cells in lung tissues from COVID-19 patients.

Shown are monocytes and macrophages (CD68⁺ and CD163⁺) (Panel A); B cells (CD19⁺ and CD20⁺) (Panel B); different markers of T cells including T cell receptor (CD3ε⁺), helper cell (CD4⁺), cytotoxic T cell (CD8⁺), T regulatory cell (FOXP3), and lymphocyte common antigen (CD45⁺) (Panel C).

Figure S3: Images of multicolor immunofluorescence detection for ACE2 (pseudo color red) and SARS-CoV-2 S1 protein (RBD, pseudo color green) in all cases of COVID-19 patients.

DAPI stained nuclei (pseudo color blue).

Figure S4: Images of multicolor immunofluorescence staining of ACE-2, SARS-CoV-2 proteins and cellular markers in lung tissues from COVID-19 patients.

Shown are alveolar epithelial type II / pneumocytes type II cells (AT2) (pseudo color green), ACE2 (pseudo color red) and SARS-CoV-2 S1 protein (RBD, pseudo color white) (Panel A); Tyr- α -tubulin (pseudo color red) and SARS-CoV-2 NC protein (pseudo color green) (Panel B); MUC5AC (goblet cells, pseudo color green), ACE-2 (pseudo color red) and SARS-CoV-2 S1 protein (RBD, pseudo color white) (Panel C); and MUC5B (club-like cells, pseudo color green), ACE2 (red) and SARS-CoV-2 S1 protein (RBD, pseudo color white) (Panel D). Nuclei were stained with DAPI (pseudo color blue).

Figure S5: Images of multicolor immunofluorescence staining of ACE-2, SARS-CoV-2 NC protein and endothelial cell markers.

Shown are CD34 (pseudo color green), ACE2 (red) and SARS-CoV-2 NC protein (pseudo color white) (Panel A); and CD31 (pseudo color red) and SARS-CoV-2 NC protein (pseudo color green) (Panel B). Nuclei were stained with DAPI (pseudo color blue).

Figure S6: Images of multicolor immunofluorescence staining of ACE2, SARS-CoV-2 S1 protein (RBD) and markers of innate immune response cells in lung tissues from COVID-19 patients.

Shown are CD68, a monocytic lineage marker (pseudo color green), ACE2 (pseudo color red) and S1 protein (pseudo color white) (Panel A); CD163, a macrophage M2 marker (pseudo color green), ACE2 (pseudo color red) and S1 protein (pseudo color white) (Panel B); elastase 2 (ELA-2), a neutrophil marker

(pseudo color green), ACE2 (pseudo color red) and S1 protein (pseudo color white) (Panel C); and CD56, a NK cell marker (pseudo color red) and S1 protein (pseudo color green). Nuclei were stained with DAPI (pseudo color blue) (Panel D).

Figure S7: Images of multicolor immunofluorescence staining of B cell marker CD20 (pseudo color green), ACE2 (pseudo color red) and SARS-CoV-2 NC protein (pseudo color white) in lung tissues from COVID-19 patients.

Nuclei were stained with DAPI (pseudo color blue).

Figure S8: Images of multicolor immunofluorescence staining of ACE2, SARS-CoV-2 NC protein and markers of T cells in lung tissues from COVID-19 patients.

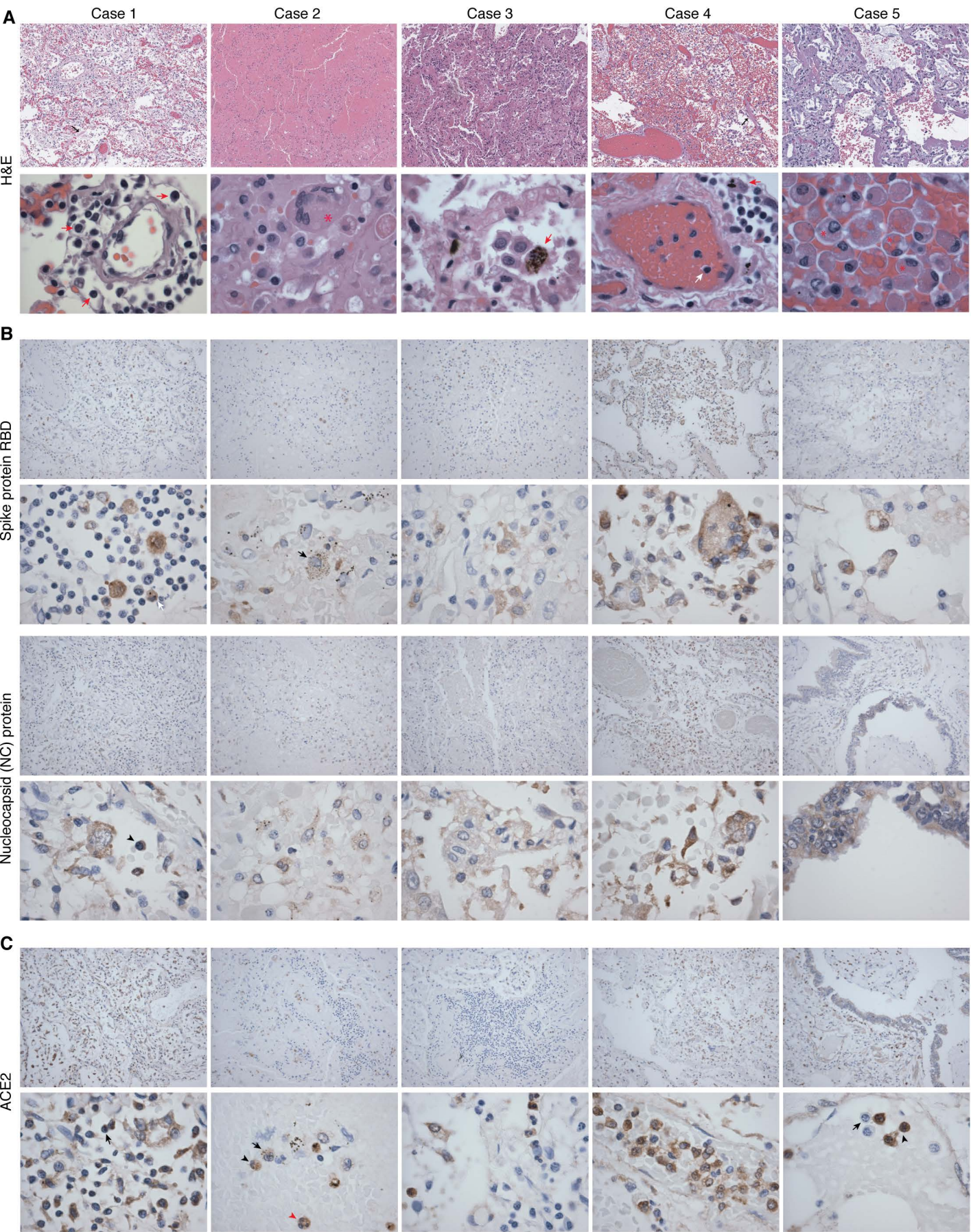
Shown are CD4, a T helper cell marker (pseudo color green), ACE2 (pseudo color red) and NC protein (pseudo color white) (Panel A); CD8, a cytotoxic T cell marker (pseudo color green), ACE2 pseudo color (red) and NC protein (pseudo color white) (Panel B); CD3 ϵ , a T cell receptor marker (pseudo color green), ACE2 (pseudo color red) and NC protein (pseudo color white) (Panel C); HLA-DR, a B and T cell activation marker (pseudo color green), ACE2 (pseudo color red) and NC protein (pseudo color white) (Panel D); and CD4 (pseudo color green), ACE2 (pseudo color red) and NC protein (pseudo color white) of cases 1

and 4 showing distinct intact *versus* fragmented membrane patterns of CD4, respectively. Nuclei were stained with DAPI (pseudo color blue) (Panel E).

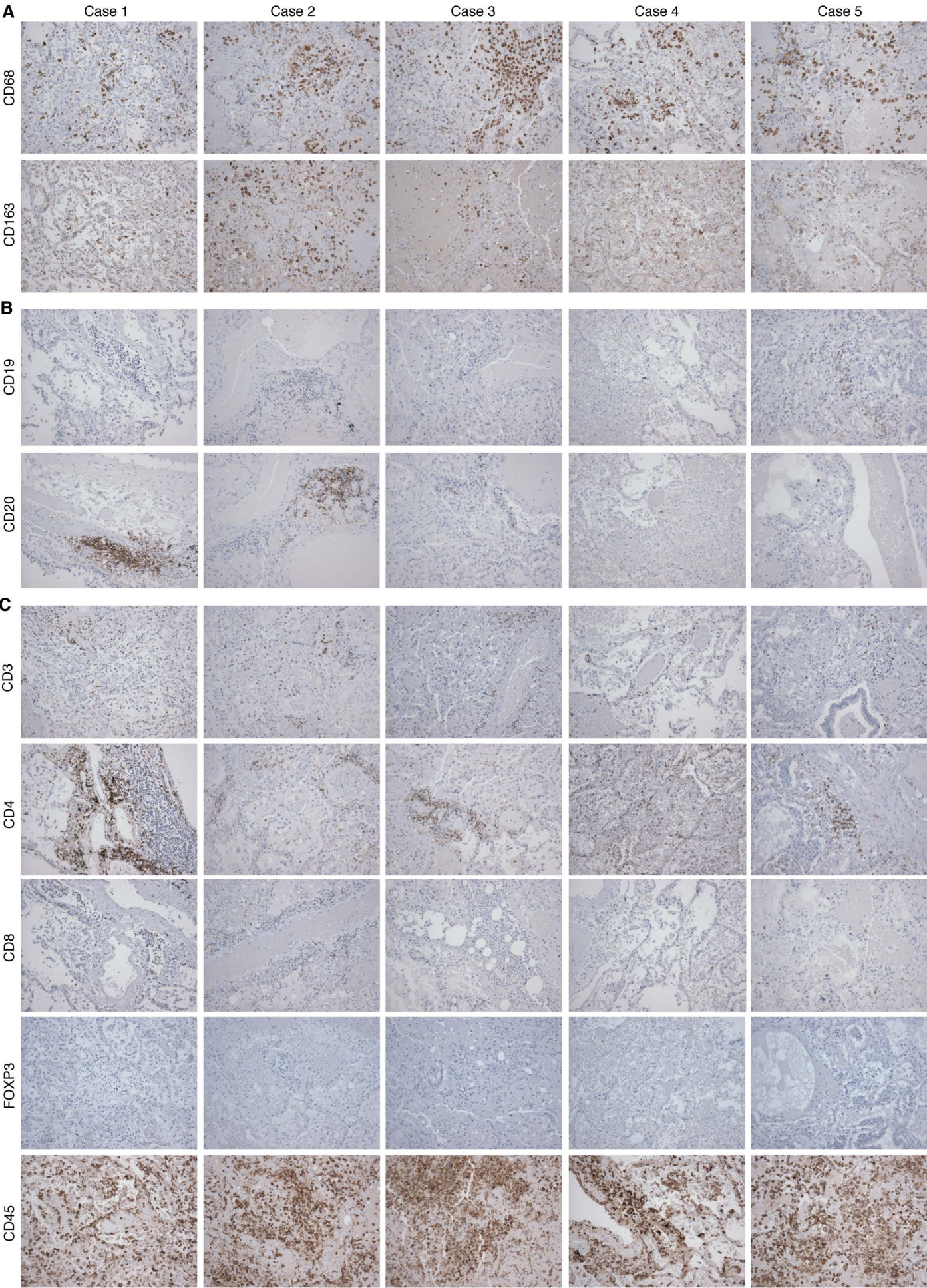
Figure S9: Images of multicolor immunofluorescence staining of IL-6, SARS-CoV-2 S1 protein (RBD), and cellular markers in lung tissues from COVID-19 patients.

Shown are IL-6 (pseudo color red) and S1 protein (pseudo color green) in lung tissues from all COVID-19 cases (Panel A); and representative images CD20 (pseudo color red), CD68 (pseudo color red) or CD163 (pseudo color red), and IL-6 (pseudo color green) of case 1 (Panel B). Nuclei were stained with DAPI (pseudo color blue).

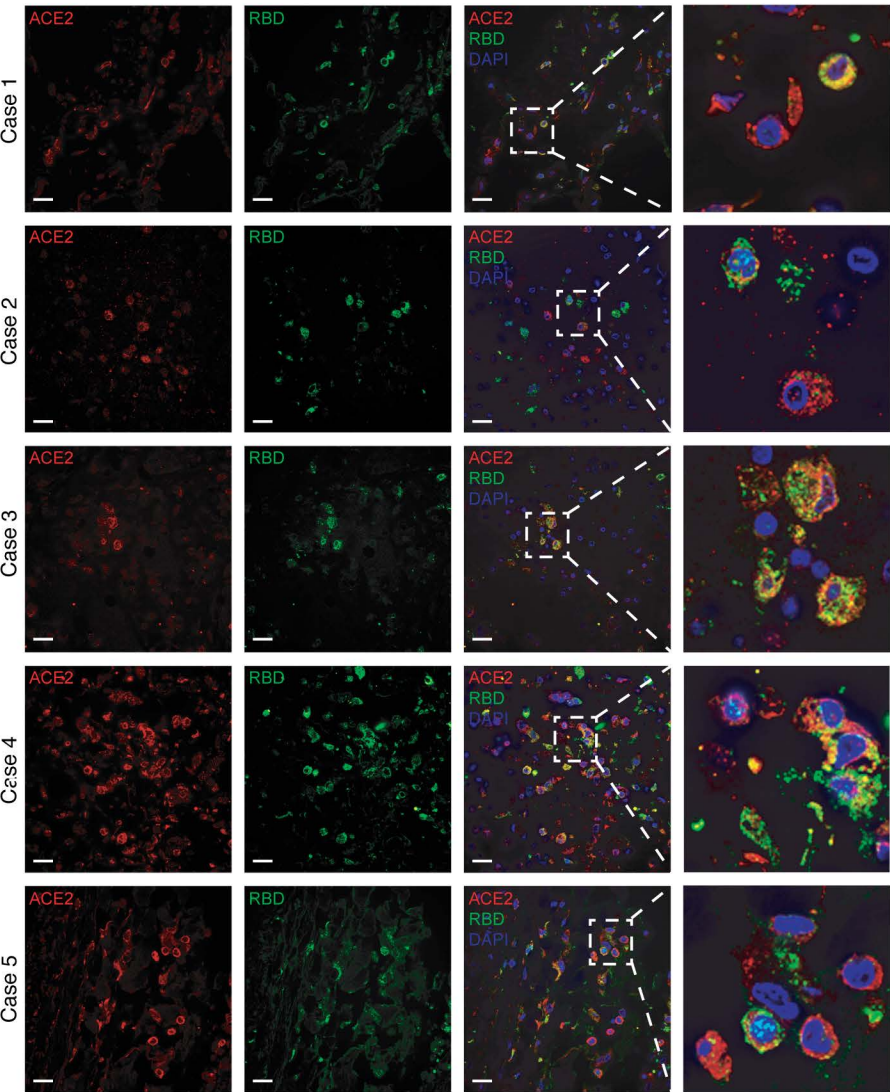
Supplementary Figure S1



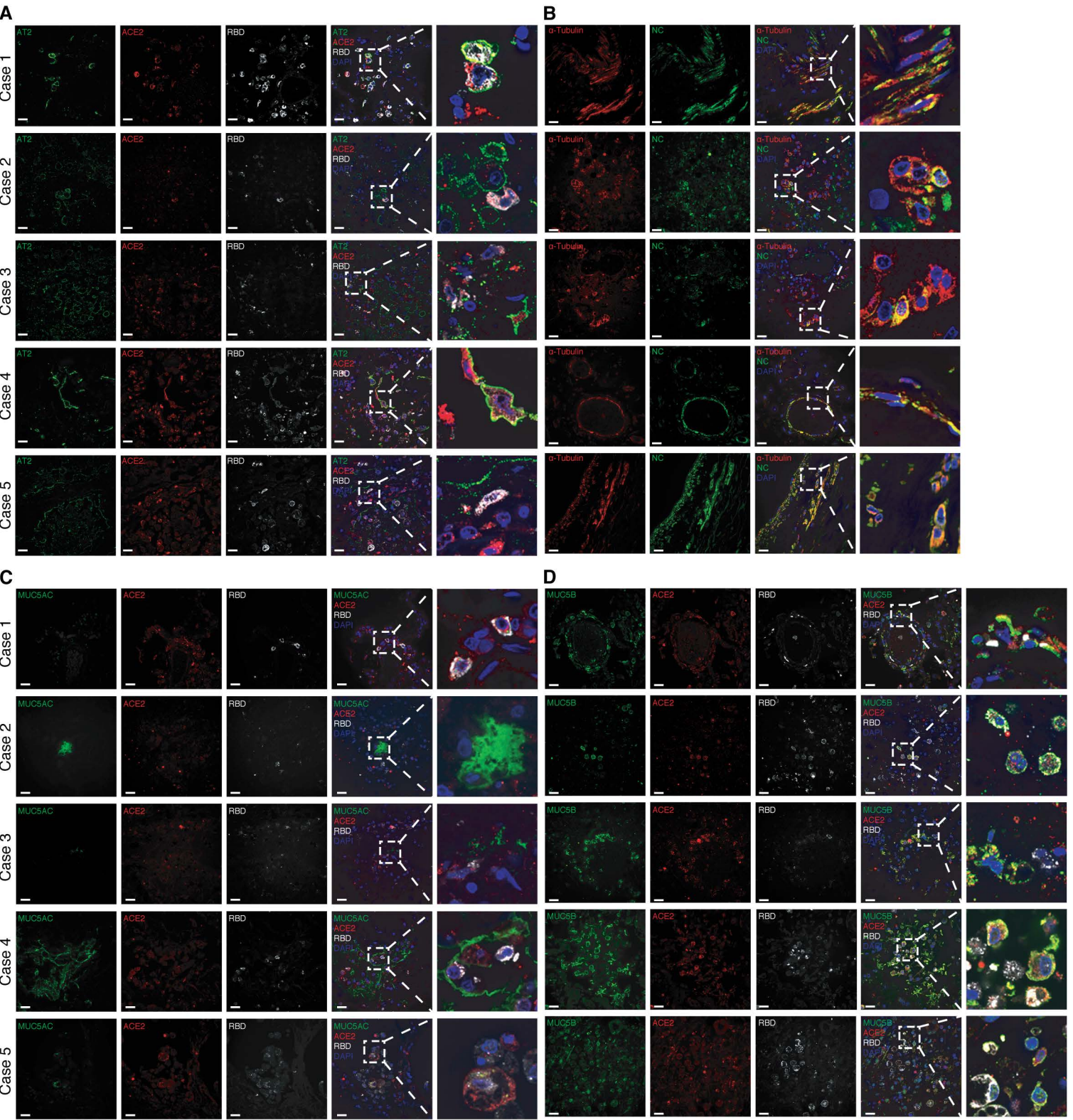
Supplementary Figure S2



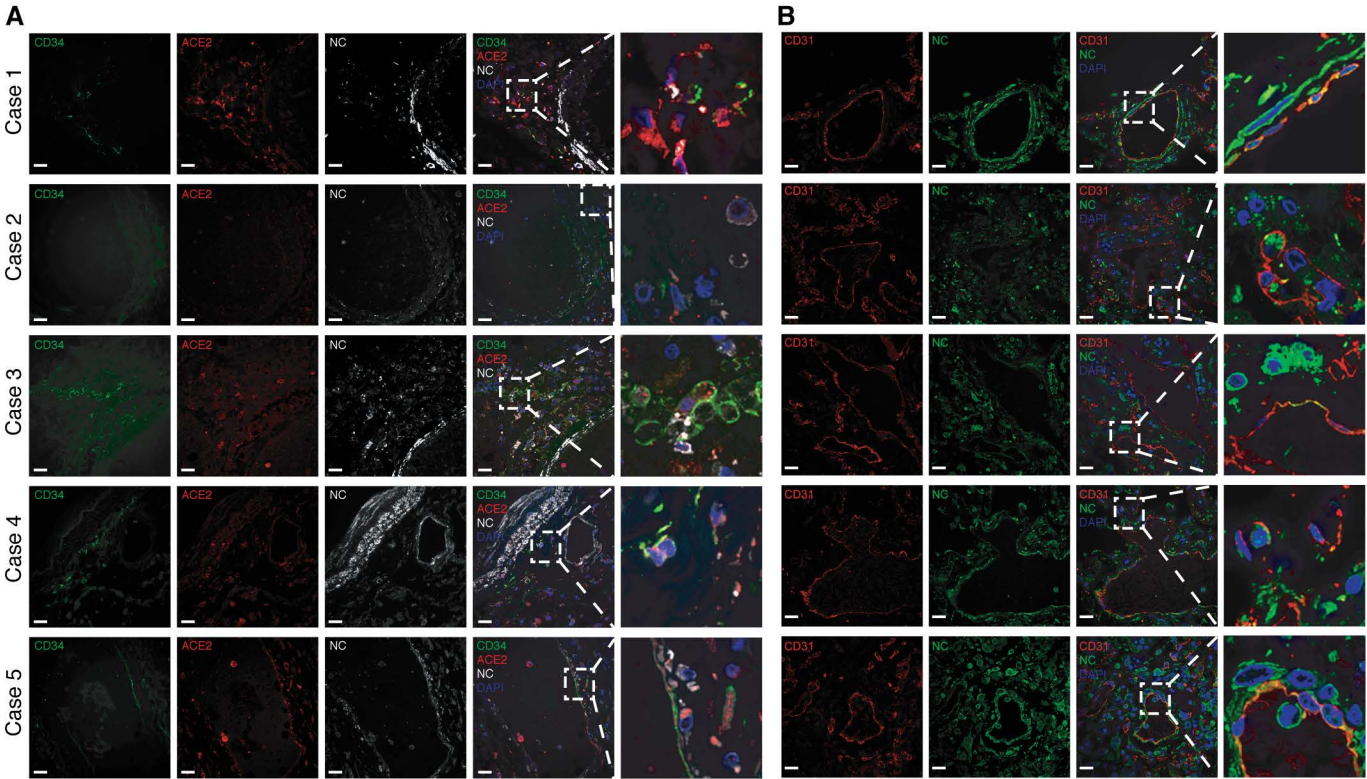
Supplementary Figure S3



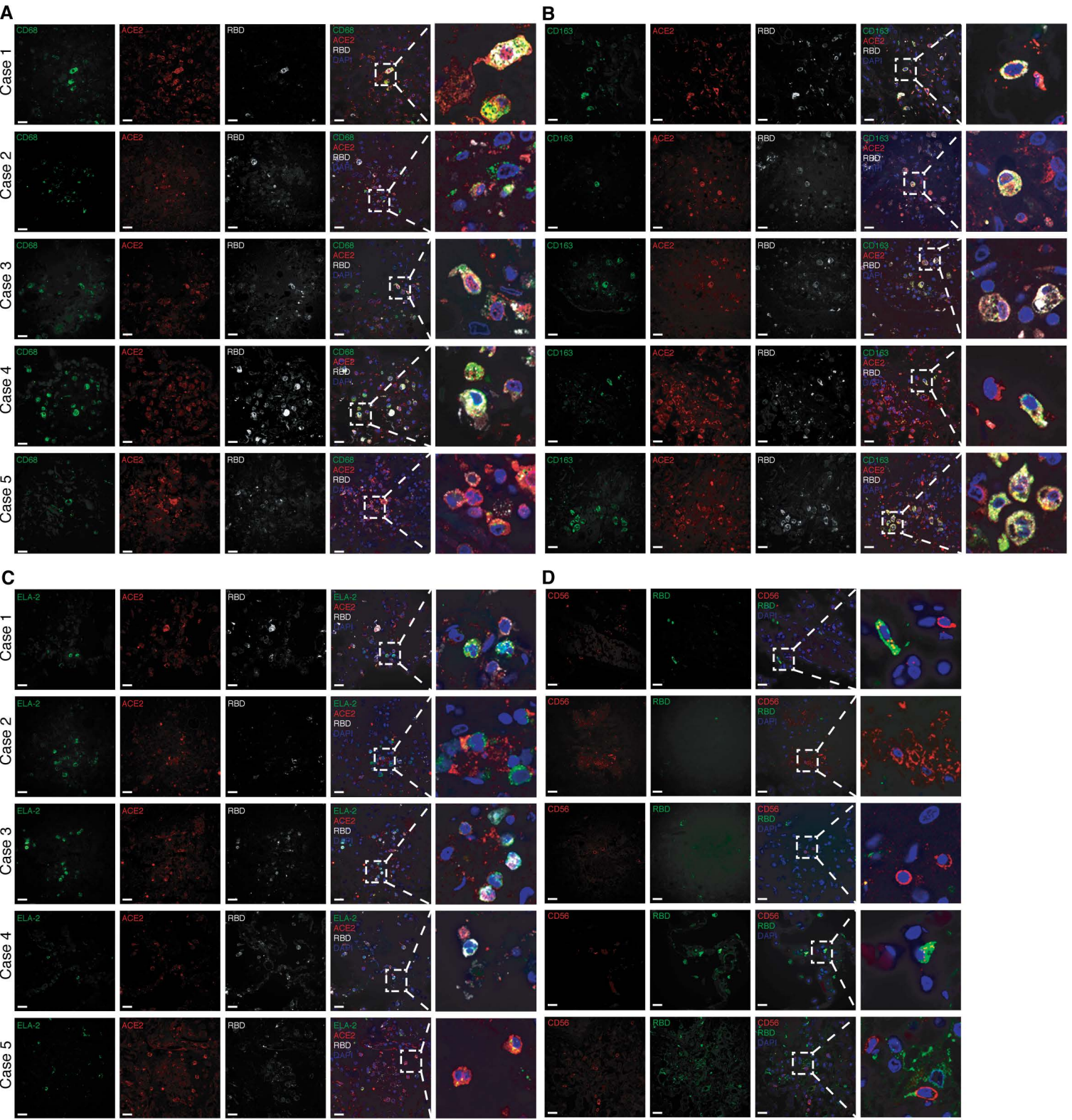
Supplementary Figure S4



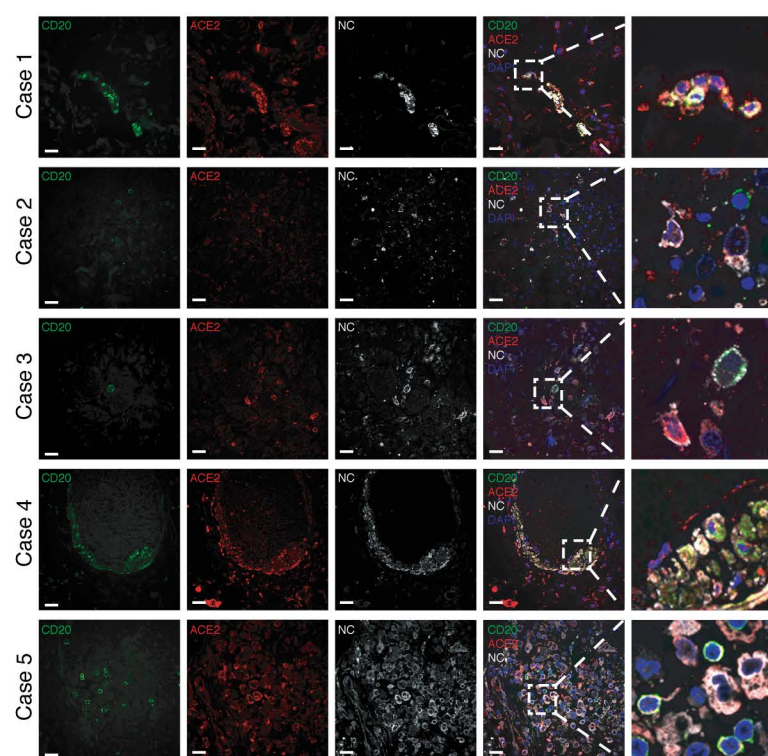
Supplementary Figure S5



Supplementary Figure S6



Supplementary Figure S7



Supplementary Figure S8

A

Case 1

Case 2

Case 3

Case 4

Case 5

C

Case

Case

Case

Cas

Casi

Case 1

Case 4

B



1999

1998



D

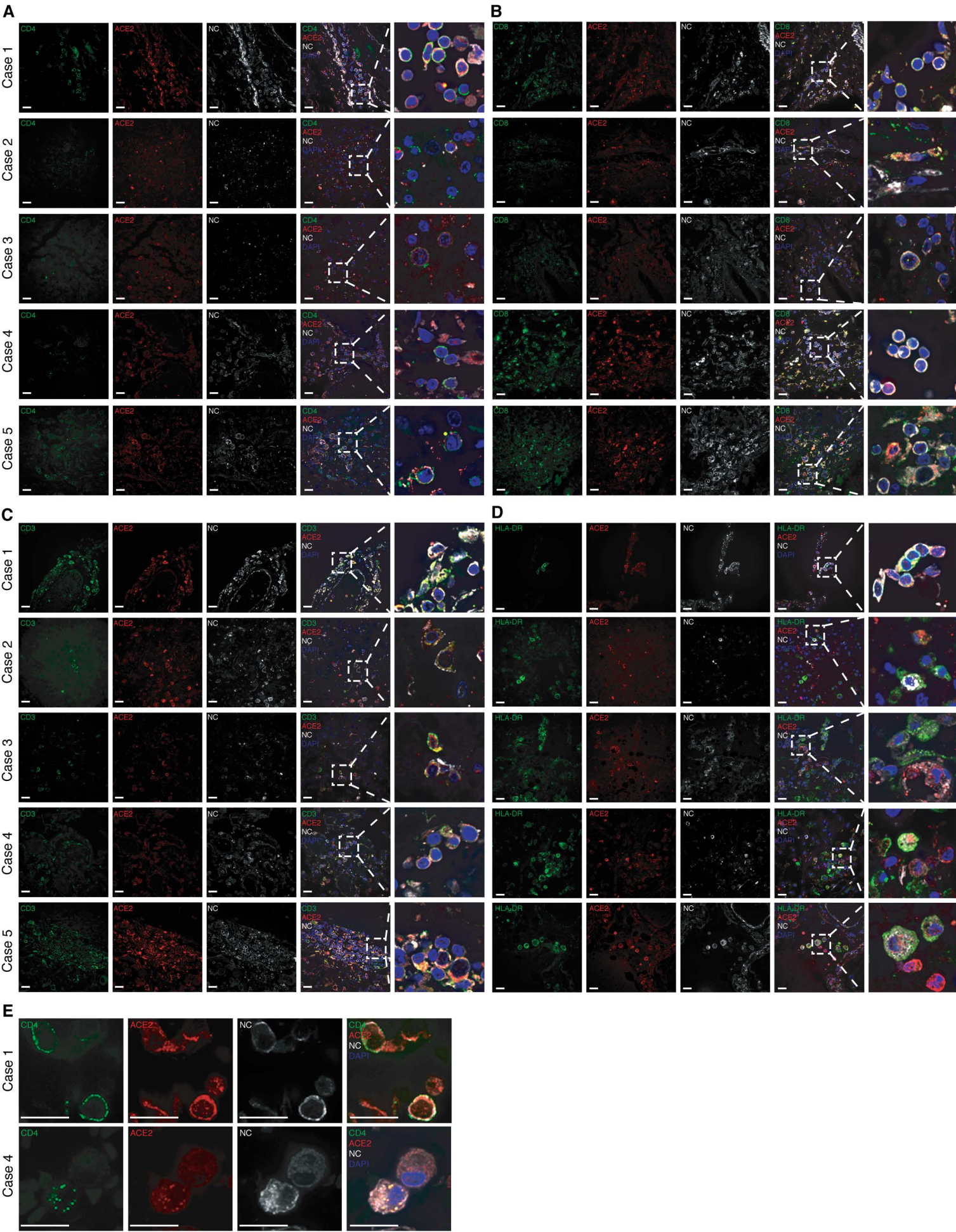
15 JULY 2005

1

10

1

—



Supplementary Figure S9

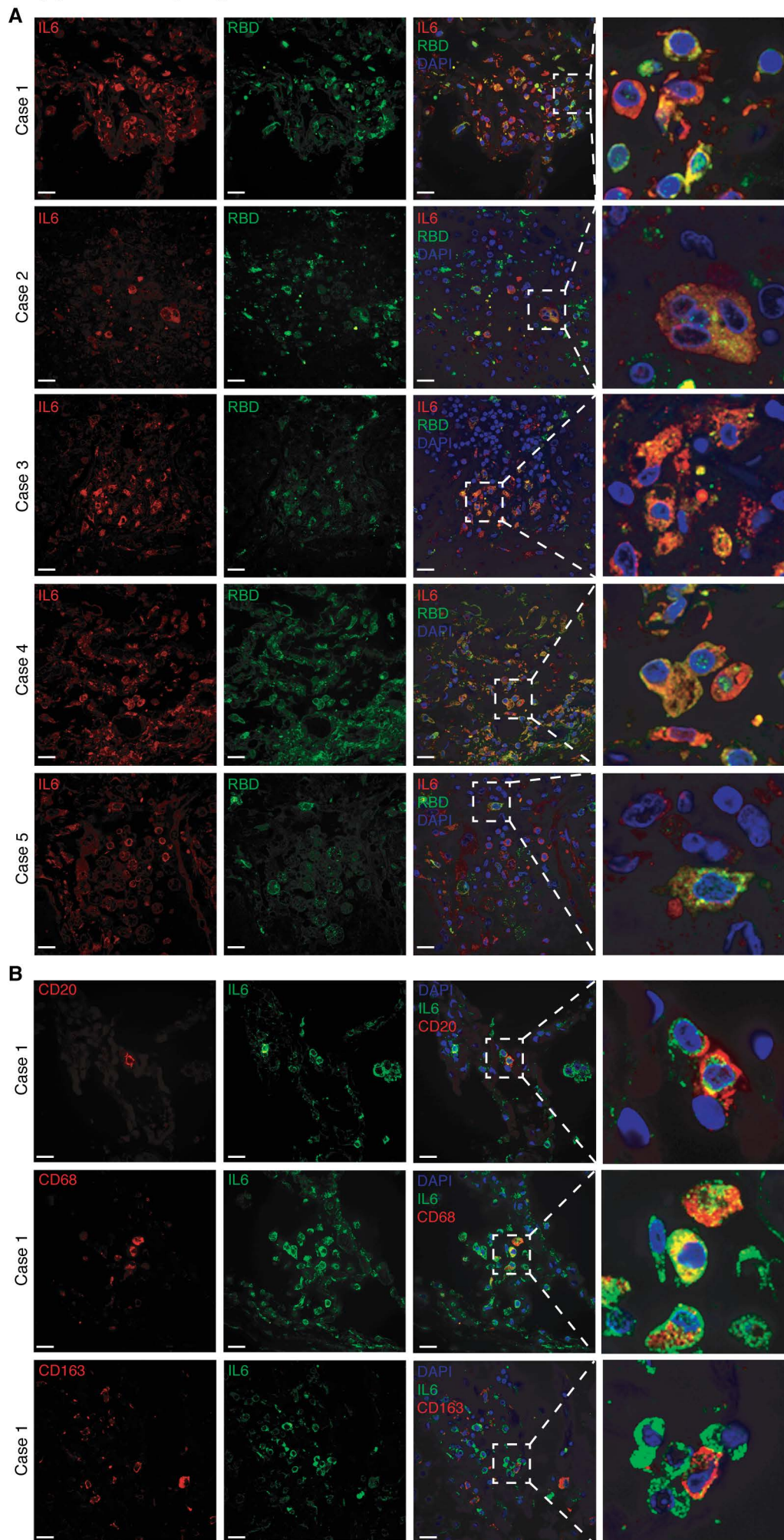


Table S1: Pertinent clinical-pathologic findings

Case	Age* (years)	Sex	Underlying Conditions	Onset to Death	Laboratory, Radiology & Clinical-Pathologic Findings
1	50s	M	Hypertension, hyperlipidemia, nasal allergies	20 days	Hypoxemia, ↑ ferritin, ↑ CRP, CXR: patchy opacities, Nasopharyngeal swab: + SARS-CoV-2 PM: Lungs - Massive pulmonary emboli, bilateral pulmonary consolidation, DAD. Hypertensive and atherosclerotic heart disease – cardiomegaly with left ventricular hypertrophy and coronary atherosclerosis
2	40s	M	Hypertension, HIV, asthma	10 days	Hypoxemia, ↑ ferritin, ↑ CRP CXR: multiple bilateral opacities, Nasopharyngeal swab: +SARS-CoV-2 PM: Lungs - Massive pulmonary emboli, bilateral pulmonary consolidation, DAD. Hypertensive heart disease – cardiomegaly with left ventricular hypertrophy
3	30s	M	Hypertension	13 days	Hypoxemia requiring intubation CXR: bilateral patchy infiltrates Nasopharyngeal swab: +SARS-CoV-2 PM: Lungs - Bilateral pulmonary consolidation, DAD. Hypertensive and atherosclerotic heart disease - cardiomegaly and coronary atherosclerosis
4	70s	M	Parkinson's Disease, hyperlipidemia	11 Days	Hypoxemia, ↑ ferritin, ↑ CRP, ↑ D-dimer CXR: Left lower lobe consolidation, right basilar and bilateral mid-lung patchy opacities Nasopharyngeal swab: +SARS-CoV-2 PM: Lungs - Bilateral pulmonary congestion & consolidation, DAD and focal superimposed acute pneumonia. Cardiomegaly
5	50s	F	Stage 4 chronic kidney disease	9 days	Hypoxemia, diarrhea, ↑ ferritin, ↑ CRP, ↑ D-dimer ↑procalcitonin CXR: Multiple bilateral ground-glass opacities Nasopharyngeal swab: +SARS-CoV-2 PM: Lungs – congestion and possible consolidation, DAD. Cardiomegaly

* No specific age is given to avoid identification of subject. M=male, F=female, CRP= C-reactive protein, CXR=chest radiograph, PM=Post-mortem, DAD=diffuse alveolar disease

Table S2: Antibodies and dilution used for immunohistochemistry and immunofluorescence assay.

Primary antibodies			
Target	Company	Catalog number	Staining */ Dilution used
SARS-CoV-2 (2019-nCoV) Nucleocapsid Antibody	Sino Biological	40143-R019	IHC and IF / 1:1000 and 1:500
SARS-CoV-2 (2019-nCoV) Spike RBD Antibody	Sino Biological	40592-T62	IHC and IF / 1:500
Human/Mouse/Rat/Hamster ACE-2 Antibody	R&D Systems	AF933	IHC and IF / 1:100 and 1:50
Anti HT2-280 Mouse IgM monoclonal antibody specific to human lung alveolar type 2 cells.	Terrace Biotech	TB-27AHT2-280	IF – 1:500
alpha Tubulin Monoclonal Antibody (YL1/2)	Invitrogen	MA1-80017	IF – 1:100
MUC5AC Monoclonal Antibody (45M1)	Invitrogen	MA5-12178	IF– 1:50
MUC5B Monoclonal Antibody (5B19-2E)	Invitrogen	37-7400	IF – 1:50
CD34 Monoclonal Antibody (QBEND/10)	Invitrogen	MA1-10202	IF – 1:500
CD31/PECAM-1 Antibody	Novus	AF3628	IF – 1:100
CD68 Monoclonal Antibody (KP1)	Invitrogen	14-0688-82	IF – 1:100
CD163 Monoclonal Antibody (OTI2G12)	OriGene	TA506380	IF – 1:150
Neutrophil elastase Monoclonal Antibody (265-3K1)	Invitrogen	MA140220	IF – 1:50
NCAM-1/CD56 Antibody	R&D Systems	AF2408	IF – 1:100
CD20 Monoclonal Antibody (L26)	Invitrogen	14-0202-82	IF – 1:100
Human CD3 epsilon Antibody	R&D Systems	MAB100SP	IF – 1 :25
CD4 Monoclonal Antibody (N1UG0)	Invitrogen	14-2444-82	IF – 1:100
CD8a Monoclonal Antibody (AMC908)	Invitrogen	14-0008-82	IF– 1:50
HLA-DR Monoclonal Antibody (LN3)	Invitrogen	MA511966	IF – 1:100
IL-6 Monoclonal Antibody (1A3B4)	Proteintech	66146-1-IG	IF - 1:200
IL-6 Polyclonal Antibody	Proteintech	21865-1-AP	IF - 1:200
CD19	Cell Signaling	90176	IHC – 1:800
CD20	Invitrogen	MA5-13141	IHC – 1:100
CD3	Dako /Agilent	A 0452	IHC – 1:100
CD4	Abcam	ab133616	IHC – 1:500
CD8	Dako/Agilent	M 7103	IHC – 1:100
FOXP3	Biocare Medical	API3197AA	IHC – Pre-diluted
CD45	Abcam	ab10558	IHC - 1:100

* IHC single staining or IF dual/triple staining

Secondary antibodies			
Target	Company	Catalog number	Staining / Dilution used
Donkey anti-Mouse IgG (H+L) Highly Cross-Adsorbed Secondary Antibody, Alexa Fluor 488	Thermo Fisher Scientific	A21202	IF – 1:200
Donkey anti-Mouse IgG (H+L) Highly Cross-Adsorbed Secondary Antibody, Alexa Fluor 568	Thermo Fisher Scientific	A10037	IF – 1:200
Donkey anti-Rabbit IgG (H+L) Highly Cross-Adsorbed Secondary Antibody, Alexa Fluor Plus 647	Thermo Fisher Scientific	A32795	IF – 1:200
Goat anti-Mouse IgG (H+L) Highly Cross-Adsorbed Secondary Antibody, Alexa Fluor Plus 568	Thermo Fisher Scientific	A-11004	IF – 1:200
Goat anti-Rabbit IgG (H+L) Highly Cross-Adsorbed Secondary Antibody, Alexa Fluor Plus 647	Thermo Fisher Scientific	A32733	IF – 1:200
Anti-rabbit IgG, HRP-linked Antibody	CST	7074	IHC – 1:800
Anti-mouse IgG, HRP-linked Antibody	CST	7076	IHC – 1:500
Anti-goat IgG, HRP-linked Antibody	Azure Biosystems	AC2149	IHC 1:500
Envision + Dual Link	Agilent Dako	K4061	IHC - Pre-diluted